

*The Journal*

**RMLA**



**Rocky Mountain Llama and Alpaca Association**

## *Our 20th Year*

*November, 2001*

*...Educating our members and the public ...*



# Trout Creek Llamas

Bolivian, Chilean, Canadian  
and domestic bloodlines

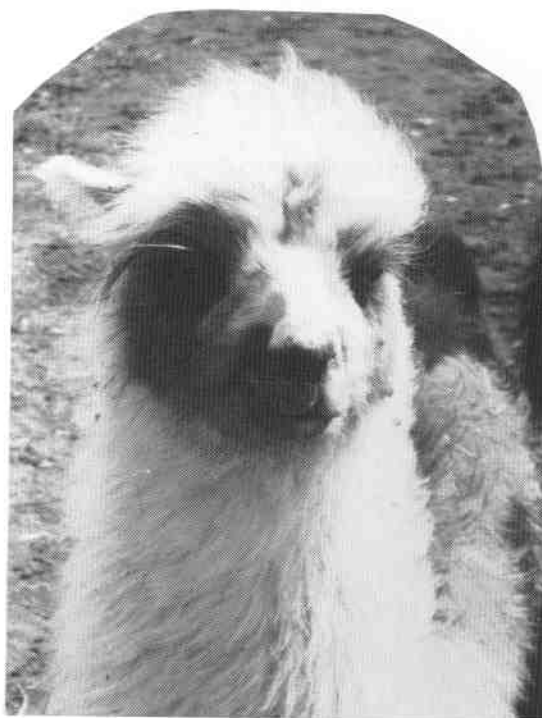
YOUR TYPE OF ANIMAL –  
FROM PET TO SHOW QUALITY

GUARD ANIMALS

MANAGEABLE AND GENTLE  
dispositions

CORRECT CONFORMATIONS

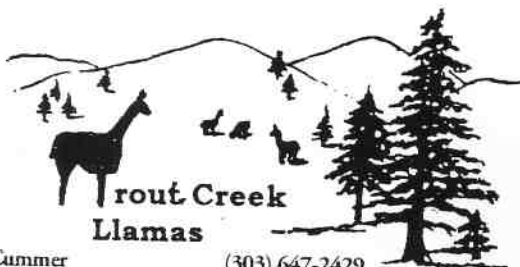
VISITORS ALWAYS WELCOME!



*Am I CUTE OR WHAT?*

BOARDING  
IN THE  
Cool Rockies

COMFORTABLE  
ACCOMODATIONS  
FOR YOUR  
MALES AND FEMALES



Trout Creek  
Llamas

Jan Cummer (303) 647-2429  
P.O. Box 6848 • Woodland Park • CO 80866  
rjcummer@interfold.com

# ROCKY MOUNTAIN LLAMA AND ALPACA ASSOCIATION

## BOARD OF DIRECTORS

President	President-Elect	Vice President	Secretary	Treasurer
Robert Tompkins	Larry Lewellyn	Jerry Dunn	Jill Knuckles	Lougene Baird
8216 Stagecoach Rd Cheyenne, WY 82009 307.635.2168 pwillamas@juno.com	2805 W. Oaklands Drive Sedalia, CO 80135 303.979.4815 Fhllamas@aol.com	14550 W. 50th Ave. Golden, CO 80403 303.277.1129 (voice and fax) beartrak@gte.net	2970 A 1/2 Road Grand Junction, CO 81603 970.241.4112 Talltailamas@ bigplanet.com	2210 Pine Wood Road Sedalia, CO 80135-8444 303.688.5445 303.688.1887 (fax) lougene@att.net

## COMMITTEES

Committee	Liaison	Chairperson	Telephone	E-mail Address
Animal Assisted Therapy	Larry Lewellyn	Carol Lontine	303.234.1943	cllontine@prodigy.net
Bookstore	Lougene Baird	Keith and Katie Wegner	303.273.9445	k2Wegner@attglobal.net
Bylaws	Larry Lewellyn	Robert Tompkins	307.635.2168	pwillamas@juno.com
Continuing Education	Jerry Dunn	Vacant		
Elections	Robert Tompkins	Vacant		
Events/Marketing	Larry Lewellyn	Jerry Dunn	303.277.1129	beartrak@gte.net
Fiber	Robert Tompkins	Sharon Beacham Karen Kinyon	303.666.9437 970.484.6241	beachams@phf-llamas.com kdd@oneimage.com
4-H Advisor	Jill Knuckles	Alaine Byers	719.742.6126	allama202@aol.com
Library	Jill Knuckles	Sharon Herbold	719.495.3092	ppwoolies@earthlink.com
Membership	Lougene Baird	Bob/Barb Hance	303.422.4681	hancelama@att.net
Research	Larry Lewellyn	Ron Baird	303.688.5445	ronbaird@att.net
Publishing	Lougene Baird	RMLA Journal—Ron Baird	303.688.5445	ronbaird@att.net
Youth	Jill Knuckles	Barb Harris	719.2765.9457	wildcatllamas@aol.com

## RMLA JOURNAL

Editor	Advertising Manager	Committee	Journal Deadlines	
Ron Baird 2210 Pine Wood Road Sedalia, CO 80135-8444 303.688.5445 303.688.1887 (fax) ronbaird@att.net	Marilyn Arnold 11483 E. Ponderosa Lane Franktown, CO 80116-9319 303.841.5126 (voice and fax) arnoldhm@earthlink.net	Bobra Goldsmith Diane Tompkins Katie Wegner Jill Knuckles Terry Lynch	August, 2001 November, 2001 February, 2002 May, 2002	July 1st October 1st January 2nd April 1st
<b>Advertising information and rates are found on page 27.</b>				

© 2001 The Rocky Mountain Llama and Alpaca Association. Reproduction of articles herein is authorized, subject to written permission being obtained from individual authors. Llama newsletter exchange editors may reproduce articles as desired so long as the author and RMLA are given credit for the original work. Exception: articles denoted with a © or "all rights reserved" must obtain approval from the author.

**NOTES:** the information in this *Journal* is not intended to be a substitute for qualified professional advice. Readers are encouraged to consult with their own veterinarian, accountant, or attorney regarding any questions concerning their animals or business operations. RMLA is not responsible for any losses resulting from readers' failure to heed this caution. The views expressed by the article writers herein are not necessarily those of the Rocky Mountain Llama and Alpaca Association, its' board, and/or its' members.

## Table of Contents

Letter to the Editor	4
President's Message	5
Minutes of the RMLA Board of Directors	6
Highlights of the 2001 RMLA Mini.....	9
Committee Reports	11
Youth Art Contest Winner	11
Profile of RMLA Members	12
Locals Win Carbondale Show	12
Lama to Luxury Success at RMLA Fall Conf.	13
Accentuate the Positive	16
New Regional Show Superintendents	16
Fairplay Llama Camp Performance Show	18
Special Thanks to Ollie Llamas	20
LOCC Fall Classic	20
Selecting a Packer for the More Demanding..	21
Jack Robertson Memorial Award	25

## A Special Thanks to Our Advertisers!

Bear Track Farm	10
Bitter Creek Llamas	26
Cache La Poudre Minerals	25
Caring for Llamas and Alpacas	20
Dazspinner	23
Foothill Llamas	Back Cover
Hance Ranch	12
Laramie County Fair	24
Llama Deara Ranch	23
National Western Stock Show	5
Rock-n M Llamas	19
RMLA Gear	13
Rocky Mountain Fiber Pool	6
Rocky Mountain Llamas	8
Tall Tail Ranch	14,15,17
Trout Creek Llamas	Inside Front
Useful Farm Products & Fencing...	18

## Letter to the Editor:

Hello!

As a new member, I have enjoyed the RMLA Journal this year. As a brand new llama owner, I am scouring past editions for information: thank you for your excellent work! I am an amateur photographer and I would like to know how to submit photos for the journal.

Best regards,  
Judy Wolff-Mills  
(970) 669-8275

*Send photos with a brief explanation of their content directly to the Editor. We always need photos of llama-related or oriented events and will use them as space is available.*

## A Note from the Editor:

**M**y first task is to thank all the wonderful llama people who have helped me during this very difficult time. It has shown me once again the beautiful spirit of the llama community when one of its members needs some help. I especially owe Larry a big accolade for all his neighborly assistance.

**Secondly**, the **Journal** needs your help. The Journal is the most costly expense that RMLA bears. We need to increase its advertising revenues to keep it in the current form. To do this, we need just about page for page of articles to advertising. Check it out: the Journal is the least expensive way we all have to advertise our herds' success, animals for sale, and to promote our ranches or farms. Advertising deadlines have been moved two weeks closer to publication time so your ads will be more timely than ever. Please help by using this resource to your best advantage. Check out the prices on page 27! Cheep, cheep!

**Thirdly**, I want to wish all RMLA members and their families the joy of a safe and blessed holiday season and the sincere hopes for a prosperous and bountiful New Year in 2002.

**Fourthly**, Let's all join together to make our llama activities in 2002 the best — and MOST FUN — that we ever have had! The spirit and sense of well-being that our llama community shares is unique and very special; let's extend it further than ever in this Jubilee Year — RMLA's 20<sup>th</sup> in serving to educate the public, new llama owners, and ourselves.

**Fifthly**, All of us should make it a personal goal in 2002 to extend RMLA's reach by bringing in a new member. We will do them a favor thereby!

*Ron*

## President's Message....

**I**t seems I just started yesterday as the President of RMLA. As I sit here writing this final message to all of you, I am wondering what to say. I've decided it would be appropriate to share some of my personal opinions based on my observations, attending shows, and what I hear from other members and past BOD types. I never could be a politician and won't start now.

For a while, being RMLA President became a full time job for me, there was so much to do and very little time. Change was difficult for some. Yes, I became very frustrated with all that needed to be done by us. As someone once said, I was like a bulldozer. I am really glad I was — because this year's BOD accomplished a lot for the betterment of RMLA. We took a business-like approach to BOD work. We were not scared to tackle difficult problems — and they were there, let me tell you. As I have said in previous messages, this BOD started planning for the future of RMLA.

It never ceases to amaze me what people say at any given time and for whatever reason. I don't know why this happens. All I know is that I have had to inform people who are giving out wrong information. Why people do this is beyond my comprehension. As RMLA members, we all have a responsibility to ensure we and each other pass on correct information.

Volunteers, members who make financial contributions and committee chairpersons — what can I say about how great you are??? We can never put a price on you all, and everything you give RMLA. Now, for the rest of you, it should not be the same people all the time. Are they any less busy than you? We need new people to get involved for the various llama activities. Look around, you will see it is true. Find a way to volunteer for a llama activity or committees — they need you — we all need you. For all the dedicated volunteers I see at events, YOU are the cream of the crop. Truly, you are the ones who make it happen. Thank YOU for making llama activities happen for RMLA!

We need to start educating owners on being more responsible breeders. There are many llamas being given away, sold at livestock sales, turned loose, etc. — because of poor breeding management. Yes, llamas being bought as a meat source is happening whether we like this or not. As you all know, this does not help the llama market. Owners should have a plan as to what they are trying to accomplish, not just to produce babies in search of the perfect llama.

RMLA's event package: what a great benefit RMLA provides to the coordinators and superintendents of different activities with needed insurance, radios, banners, and so forth. In return, RMLA only asks that you submit a story and pictures for the Journal. This is not asking too much from anyone for what you are getting in exchange from RMLA. Yes, there are guilty ones and you

know who you are! I hope this will change.

As we see other llama organizations struggle in the quest for survival, RMLA just keeps trekking into the future. We are a leader in this industry and a great organization that is very financially sound— see the Treasurer's report on page 7. Let's all of us make it even better by supporting the new RMLA BOD and moving ahead. Get involved by assisting in any type of llama activity. There is only one requirement — personal DEDICATION to making RMLA even better.

The Journal — Members, the Journal needs you! The Journal will only survive in its present form if we as members are committed to making it survive. If we, the membership, do not support this great publication, it will not exist in the future. Please get involved! Write stories. Advertise.

A very special thanks to Coral Lontine, Deb Mayo, Jim Osmun, and Ann Braun for their presentations at the mini-conference/annual business meeting and to all who attended.

Thanks for your support, keep on trekkin'.

*Larry*  
\*

**RMLA.COM**  
**YOUR BEST SOURCE FOR RELIABLE**  
**INFORMATION ABOUT ALPACAS**  
**AND LLAMAS. SEE IT TODAY!**

\*\*\*\*\*

**2002**

**NATIONAL WESTERN**

**STOCK SHOW**

**LLAMA SHOW**

**JANUARY 12-13**

**YOUTH & OPEN PERFORMANCE**

**THREE WOOL DIVISIONS**

**JUDGES**

**JUDY BROCK**

**BECKY RANDALL & MARK SMITH**

**"EVENING WITH A LLAMA"**

**SATURDAY EVENING**

**SUPERINTENDENT**

**JERRY DUNN**

**beartrak@gte.net**

\*\*\*\*\*

# Minutes of the RMLA Board of Directors' Meetings

**Saturday, August 25, 2001**  
**LITTLETON, COLORADO – 10:30AM**

Board Members Present: Larry Lewellyn, Robert Tompkins, Lougene Baird, and Jill Knuckles.

Secretary's Report The minutes from previous meetings had been presented, approved and printed in the Journal. Several Motions were noted which had been approved via email by the board.

**Motion:** The BOD has received, reviewed and approved the Fairplay Race Budget submitted by Roger Miller.  
**Motion:** Lougene Baird. 2<sup>nd</sup>: Jill Knuckles. Motion Carried.

**Motion:** A motion to sponsor the Performance Championship Award at the Tri-State Fair in Amarillo.  
**Motion:** Lougene Baird, 2<sup>nd</sup>: Larry Lewellyn. Motion Carried.

## Treasurer's Report

Total Cash on Hand	\$68,383
General Operations	\$ 2,824
Research Reserves	\$ 3,024
Life Member Reserves	\$ 7,107
Liquid Asset	\$26,783
CFL&A Production	\$18,392
CFL&A General Operations	\$10,253

All received invoices have been paid to date. All monies have been deposited to date. The treasurer has not received to date the invoice for the August Journal mailing fee or the income from the Fairplay event.

Bylaws The board walked through the updated bylaws to make any final revisions prior to them being sent to the membership. Robert and Diane will make the final revisions and email it out to the board for one last review. The updated bylaws will be mailed to all members along with the election packet. We will vote on accepting the bylaws at the Annual Membership meeting in October.

Annual Business Meeting and Conference The Annual Business Meeting and Conference will be held Saturday, October 27<sup>th</sup>. The board finalized the schedule and will be mailing out the information packets and sign up shortly.

Events Packet The board discussed how the events packet was working and again we discussed the importance of approving all events submitted. We need

to revisit the cost of the insurance and discuss the possibility of allocating some of the cost to those events requesting the insurance due to the high cost.

Administrative Manual A manual was created and distributed to each board member. These manuals are being developed to include policies and procedures, position descriptions, bylaws, etc.

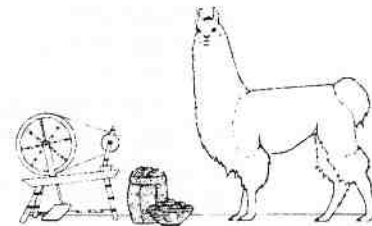
Fiber Co-op to Nationals Robert Tompkins will respond to Karen and request that if they would like to take the booth to Nationals to submit a budget for approval.

Inventory Lougene is in the process of updating the RMLA inventory list.

Membership Jill will review the attendee list from the Banana Belt Dinner and invite non-members to join.

Meeting adjourned at 4:30 pm.

## ROCKY MOUNTAIN LAMA FIBER POOL



Please visit our new web site:  
[rmlfiberpool.com](http://rmlfiberpool.com)

Order yarn & roving from our secure server!

The Fiber Pool is a private business  
owned and operated by:

Sharon Beacham 2380 - 95 <sup>th</sup> Street Boulder, CO 80301 303/ 666-9437	Karen Kinyon 16423 N. County Road 9 Wellington, CO 80549 970/ 568-3747
--	---

ALSA Certified Llama Fiber Judges

**MINUTES OF THE ANNUAL MEMBERSHIP MEETING  
OCTOBER 27, 2001  
LITTLETON, COLORADO**

**BOARD MEMBERS PRESENT** Larry Lewellyn, Robert Tompkins, Jerry Dunn, Lougene Baird, Jill Knuckles.

**WELCOME:** Larry Lewellyn and Robert Tompkins led the membership in the Pledge of Allegiance.

**Recognition of Members:**

Betty Robertson was presented with the 2001 Jack Robertson Award for her Outstanding and Continued support of the llama community.

Teri Baird for her efforts in the FMD situation by contacting government officials and informing the membership.

Ron Baird, RMLA Journal Editor. Ron published the largest journal ever, the May 2001 Issue.

Diane Tompkins for her hard work on the bylaws revision.

Jerry Lee for all of his volunteer efforts.

**MINUTES OF LAST MEETING** Jill Knuckles

Minutes were approved from the 2000 Annual Membership Meeting.

**Motion** to accept the minutes: Diane Tompkins  
2nd: Ron Baird Vote: All attendees showed in favor, Motion carried.

**TREASURER'S REPORT:** Lougene Baird

<b>Cash on Hand</b>	\$3,996
General Operations	26,925
Liquid Asset Savings	18,481
CFL&A Production Savings	3,045
Research Savings	7,141
Life Member Savings	11,565
RMLA Bookstore	<b>\$71,153</b>

**ASSET VALUE**

Fiber Co-op Cap. Equipment	\$7,100
Bookstore	43,217
CFL&A	36,036
Youth Manual	4,926
Liability Signs	2,255
Library	17,500
(excluding out-of-print)	
Miscellaneous	2,500
(Journal, Brochures, Radios, Etc)	
<b>Total Asset Value</b>	<b>\$70,317</b>

**NET WORTH** **\$141,470**

**COMMITTEE REPORTS**

**Bylaws** - Robert Tompkins - provided an overview of what the committee had accomplished. The revised bylaws were also provided to the membership for vote of approval. Committee members include Robert Tompkins, Larry Lewellyn, Diane Tompkins, Robert Knuckles, Lougene Baird and Jerry Dunn.

**Events/ Marketing** - Jerry Dunn—RMLA sponsored 38 events during 2001 that included conferences, clinics, workshops, shows and fun llama/alpaca get togethers. Approximately 2000 RMLA members and non-members participated in the events sponsored by RMLA. Sixteen of the scheduled events requested the proof of RMLA insurance to cover their event. At present Colorado Liability Statute Signs are being sold through the bookstore to help pay for the cost of insurance for all events. We are looking forward to more events being organized throughout the RMLA membership.

**Fiber** - Karen Kinyon—The Fiber Committee's main project is the RMLA Fiber Co-op Booth. The mission of this project is to promote llama and alpaca fiber by selling Handspinner's roving, millspun yarn, handmade knitted, crocheted, felted and hand-woven finished garments. 20-30 RMLA members that are extremely talented fiber artist consign all of these items.

In 2001, the RMLA booth traveled to five events: National Western Stock Show in Denver, CO; Banana Belt Classic in Grand Junction, CO; Estes Park Wool Market in Estes Park, CO; Taos Wool Festival in Taos, NM; and the RMLA Fall Conference in Littleton, CO. Appreciation is extended to the Fiber Committee Chairpersons (Karen Kinyon and Sharon Beacham) and the dedicated volunteers: Judy Cox-Sample, Judy and Stan Wolff-Mills, Kathy Hartmeister, Ben and Christy Herr, Tonya Swegler, Cheri Paxson, Billie Best, Elaine Sipes and anyone else who has helped to load, unload, set-up, staff at shows and take down the booth.

The booth's total income for this year was approximately \$7,700; but more importantly, the education that was provided at these events about the value of llama and alpaca fiber and the animals that produce it is immeasurable.

**Library** - Jill Knuckles—Sharon Herbold was unable to make the Annual Business Meeting, however she did submit the following report. Requests from the library continue on a steady pace. Not only are items being sent to members in this vicinity, but the library has recently send materials to Oregon and Pennsylvania. Email and the RMLA web site

*(Continued on page 8)*

(Continued from page 7)

are proving the means for request. Thanks to Bob and Barb Hance for setting this set up for the Library. Sharon is able to correspond with members making requests to let them know which requests are available and which have a waiting list. Sometimes there is a wait on some of the more popular items, especially videos. The library keeps a waiting list and sends items as soon as they become available. The two most popular areas of interest continue to be training and fiber.

The current inventory is printed in the back of the membership directory and members can email Sharon at ppwoolies@earthlink.net or the current inventory can be found on the RMLA web site under the subheading "library", and a request can be sent directly from that location. Please remember to return your checkout by the due date, as there could be other members waiting for the materials.

**Membership** - Barb Hance—We currently have 34 Junior members, of which 6 are new this year; 18 Life members, 1 of which is new this year; 5 youth members and 58 new members. 72 of our members have websites and 296 have email. RMLA has a total of 311 memberships representing 407 people.

**Research** – Ron Baird—RMLA continued to fund the research focusing on the gelding age of the llama and the effects of gelding at various ages. The Morris Animal Foundation recognizes RMLA as supporting research. The Morris Animal Foundation has funded 60% of all medical research for llamas.

#### OLD BUSINESS

Karen Kinyon discussed the previous year contributions made by RMLA for the Fiber Awards presented at the Estes Park Wool Market and the Taos Wool Festival. In the past RMLA has contributed \$100 for four awards. Karen again asked the board and membership to contribute to these awards for 2001.

**Motion:** RMLA will contribute \$100 for awards, 2 awards at the Estes Park Wool Market and 2 awards at the Taos Wool Festival. The awards will be presented for the Fiber Judging. **Motion:** Deanna Lewellyn, 2<sup>nd</sup>: Ron Baird. **Motion Carried.**

#### NEW BUSINESS

**Returning to our Roots** – Robert Tompkins proposed that we return to our roots, as this is RMLA's 20<sup>th</sup> year. For the Annual Business Meeting we would like to return to Monument, Colorado where the first RMLA meeting was held.

**Llama Festival** – Robert Tompkins proposed to the

membership that we need to think of a Llama Festival, an event to which the public is invited and we can have a variety of demonstrations and education about llamas and alpacas. Bobra Goldsmith suggested drawing on the Llama Fun Day put on by Barb Coffman-Flinn.

There was some general discussion by the membership in reference to ILA and the current difficulties it is experiencing. There were concerns by the membership in reference to the resources ILA has provided and the need to be aware of these resources and not lose them. Roger Miller proposed that the RMLA Board be aware and keep up to date on the happenings of the ILA so that we don't lose the valuable resources. Robert Tompkins offered to get in touch with Scott Woodruff.

The **Bylaws Revision** unanimously passed by a vote of the membership, 91 votes approved of the revision, 1 vote was dismissed and no votes were against.

The results of the **Elections** were announced: Robert Tompkins moved into the President position from the President Elect position for 2001.

President Elect – Larry Lewellyn  
 Vice President - Jerry Dunn  
 Secretary – Jill Knuckles

**Motion to Adjourn** – Diane Tompkins  
 2nd – Ron Baird

**Remember ...**  
**RMLA.COM is your best source of**  
**information — easy to use and**  
**always up-to-date**



### Rocky Mountain Llamas

See the best llama equipment online:  
<http://www.rockymtllamas.com>  
*New Items! All pictures in color.*

Hatters & Leads for every llama activity  
 Packing Gear ~ Training Videos & Books ~ Gifts  
 Grooming Supplies ~ Driving Harness & Carts  
 Show Sheets, Warm Coats & Raincoats  
 Special farm items to make life easier

Phone/fax: 303-530-5575 e-mail: [questions@rockymtllamas.com](mailto:questions@rockymtllamas.com)

Bobra Goldsmith ~ 7202 N. 45th St. Longmont, CO 80503



# Highlights of the 2001 RMLA Mini Conference and Annual Business Meeting

By Robert Tompkins, RMLA President

**O**n October 27, 2001, RMLA members attended a morning mini conference and the annual business meeting at the employees' meeting hall at the Federal Correctional Institution in Littleton, Colorado. On a splendid autumn day, the morning started with a "Llama to Luxury" project involving RMLA members Karen Kinyon, Diane Walker-Tompkins and Judy Wolff-Mills. The goal was to make a shawl before lunch that would be auctioned later in the day as a RMLA fundraiser. The team worked diligently with Karen Kinyon and Diane Walker-Tompkins as the fiber spinners and Judy Wolf-Mills was the weaver. In the end, the team produced a 21 ½ by 72 inch shawl with 7 inch fringe. The shawl was made of 80% llama fiber and 20% silk. Later in the day the shawl was auctioned and went to top bidder Betty Robertson for \$250.00. Look for this demonstration event to become a team competitive event at our annual meeting in 2002!

As the "Llama to Luxury" team worked in one corner of the meeting hall, our first speaker, Carol Lontine, presented the subject of "Animal Assisted Therapy." Carol started her presentation by introducing her pet therapy llama Pisco to the RMLA audience. Carol spoke of the work of "The Delta Society" over the past two decades in researching the effect of the human-companion animal bond on the mental and physical well-being of people. She also shared some of her experiences with Pisco in visits to hospitals, nursing homes and schools. For more information, see Carol's articles in the August 2001 *RMLA Journal*.

Our second speaker of the morning was Deb Mayo, DVM, who spoke on alpaca and llama care. Deb's presentation was very informative and it sparked a lot of questions from the membership. She answered wide ranging questions associated with alpaca and llama nutrition and vaccinations. In addition, Deb addressed special issues such as caring for alpaca and llama teeth and geriatric llamas.

The working lunch break included a pizza carry-in, salad and beverages, as well as, a presentation by Jim Osmon and Anne Braun. The presentation focused on efforts in the western United States involving llamas in the upkeep of trails. Specifically, the discussion focused on the maintenance of the pacific trail.

The annual business meeting was the focus of the afternoon session. The meeting started with the

recognition of certain members for their contributions in the past year. A special award was presented to RMLA's first life member, Betty Robertson. This award was the work of RMLA member Sandra Payne and was originally to be presented to Betty at the ALSA Rocky Mountain Regional Championships in Denver earlier in October. Due to Betty's inability to attend the earlier presentation, President-Elect Larry Lewellyn was honored to make the presentation to Betty at the annual meeting. The award, in the name of Betty's late husband Jack, recognized her contributions to the llama community. Anyone who has the privilege of knowing Betty knows of her contributions and that the award is well deserved.

In addition, RMLA members were recognized for their work as follows: Ron Baird for his work on the *RMLA Journal* and with the Morris Animal Foundation, Terri Baird for her work on the *RMLA Journal* and as a member of the elections committee, Dave and Willow Kauffman for their exceptional volunteer efforts at RMLA sponsored events, and Diane Walker-Tompkins for her work with the Executive Committee in preparing draft after draft of the bylaws revisions.

The business meeting then addressed the minutes of the 2000 Annual Business Meeting, received the Treasurer's Report and various committee reports. Thereafter, old business was addressed and the meeting concluded with new business. With a handshake from outgoing President, Larry Lewellyn the writer of this article commenced his term as President of RMLA. I made a few brief remarks at that time, which I would like to share with the membership generally. First, as RMLA enters its 20<sup>th</sup> year I want us to focus on our Associations' roots. RMLA is rooted in section 2.1 of our bylaws where it states we "shall educate the members and the public as to the breeding, raising, care and use of llamas and alpacas." To that end, I propose three events in the coming year:

- 1) A spring mini-conference to be held at a yet to be determined location the last weekend of March or the first weekend of April. I challenged those in attendance to consider hosting such an event and I now broaden my appeal. If you are interested in being the host location and you want to work with Executive Committee to make this happen contact Executive Committee member.
- 2) A llama and alpaca festival to be held at a yet to be determined location, possibly in September 2002. This idea was first brought to my attention by RMLA member Steve Baker who, while on a business trip, saw an ad in a newspaper for such an event in Pennsylvania. The ad focused on a wide range of demonstration activities involving alpacas and llamas (i.e., cart driving, fiber, packing, etc.). The Pennsylvania event also included a "parade of sale animals." The event could dovetail off an existing event or it could be

(Continued on page 10)

(Continued from page 9)

done as a stand alone event. I have already received offers of volunteer assistance to make this happen. For instance, new RMLA member Stan Wolff-Mills has a background in marketing and has offered his skills in this regard. Would you like to see something like this happen? If so, contact me or any member of the Executive Committee.

- 3) Consistent with "focusing on our roots" I mentioned that the Executive Committee would like to return to Monument, Colorado for its 2002 Conference and Annual Business Meeting. If you will, a return to where it all started. As above, it takes lead time, volunteers and effective committee work to make this happen. Are you interested in helping? If so, you know the drill, contact me or any member of the Executive Committee.

RMLA is a tremendous organization dedicated to education of the public and its membership in the care of alpacas and llamas. We need to remain at the forefront of this effort and continue to be the standard for others. To do so, we need to expand our volunteers on our committees. As I did in the business meeting I make this challenge and expand my appeal to the membership as a whole. Will this be a year that you consider giving of some time for the betterment of RMLA? I hope so and I look forward to working with each of you.

The business meeting also included the announcement of the results of the bylaws revision vote and the vote results for Executive Committee vacancies. I am pleased to announce that the bylaws revisions vote passed with 99% of the vote. And, I am equally pleased to announce that Larry Lewellyn is RMLA's new President-Elect, Jill Knuckles was re-elected to her position as Secretary and in the race between Joe Payne and Jerry Dunn for Vice-President, Jerry Dunn was re-elected to her position. Thank you for participating in these important votes.

Lastly, the business meeting also included important discussions on several important topics. Among them, were the implications to RMLA of the announcement by ILA that it is disbanding. And, legal issues associated with how land is determined to be agricultural land for tax assessment purposes. No doubt these and other topics will be discussed by the Executive Committee. Let us know your thoughts, concerns and recommendations. Our splendid autumn day ended with the results of the Halloween desert contest and of several silent auctions benefiting RMLA. A good day it was as we embarked into our 20<sup>th</sup> year! \*

## **BEAR TRACK FARM LLAMA TRAINING CENTER**

**JERRY DUNN  
14550 W. 50TH AVENUE  
GOLDEN, COLORADO 80403-1707**

### **CLINICS AVAILABLE PRIVATE OR GROUP LESSONS CART DRIVING**



### **EXCELLENT.FUN. TRAINING FACILITIES**



**e-mail: [beartrak@gte.net](mailto:beartrak@gte.net)  
home page: [www.rmla.com/dunn](http://www.rmla.com/dunn)**

## Committee Reports...

### Events

**By: Jerry Dunn, Chair**

RMLA sponsored 38 events this year that included conferences, clinics, workshops, shows and fun llama/alpaca get-togethers. Approximately 2000 RMLA members and non members participated in the events sponsored by RMLA.

Printed materials, which included the RMLA Journal, RMLA service directory, RMLA llama facts brochure, guard llamas, RMLA Event calendar, and RMLA membership forms, were made available for all events. Two-way radios, the RMLA booth, and the RMLA banner traveled to many of these events.

Sixteen of the scheduled events requested proof of RMLA insurance to cover their event. At present, Colorado liability statute signs are being sold through the bookstore to help pay for the cost of insurance for all events. See the financial report for the amount of money made through these sales. **Do you have your sign yet?**

Check the RMLA website for an order form.

[www.rmla.org](http://www.rmla.org)

We are looking forward to more events being organized throughout the RMLA membership. Many clinics and workshops organized in the RMLA region were not sponsored by our organization. We would like to encourage the organizers to keep us posted about your events so the membership can participate and learn new skills.

### LIBRARY

**By: Sharon Herbold, Chair**

The RMLA library continues to provide materials to educate members in all areas of the llama (llama and alpaca) industry. Recent requests by members are mainly from the training area. The two new videos by John Mallon, *Difficult to Halter* and *Working in the Round Pen*, are currently the most popular items. Requests for fiber related materials continue at a steady pace.

One new title has been purchased for the library. It is *The Camelid Companion - Handling and Training Your Alpacas and Llamas*, by Marty McGee Bennett.

Also, there have been two recent donations of items to the library. Ron and Lougene Baird donated the transcript of the Bureau of Land Management's John's Disease Workshop. The workshop was hosted by Colorado State University on March 12, 1996. Dawn

Moore has donated a copy of the video, *You, the Ultimate Llama Groom*. Thank you for these additions to the library.

### Membership

**By: Bob and Barb Hance, Chairs**

#### A Special Reminder to RMLA Members:

The Membership Committee and the Board of Directors made a decision in early 2001 to change the membership time frame from January 1/December 31 to the new dues dates March 1/February 28-29. PLEASE NOTE: the dues you paid in 2001 are paid through February 28, 2002. Hopefully, this will ease the Holiday financial crunch and the problems of lost mail. Watch for the renewal information and Service Directory Advertising forms shortly after Christmas this year. Both forms are included in this Journal. You can complete and send them anytime before the end of February. You will have time to compose that best selling ad for your animals and/or services.

Once again we urge all of you to consider becoming LIFE Members - we have an easy payment plan of four quarterly payments of \$125.00 each. You will never again need to worry about whether or not you have paid your dues.

RMLA has a great deal to offer Lama owners - whether your operation is large or small. Think of all the events and shows - the web site - the Service Directory - the exceptional library - the scholarships - the research funding and sooo much more. It is truly a GREAT volunteer organization.

Wishing for lots of blue ribbons and Champions from RMLA members at the Regionals and Nationals, and our best wishes for wonderful holidays.

**For the Treasurer's Report, see the Annual Meeting Minutes on page 7.** \*

#### RMLA Youth Art Contest

The 2001 winner of the  
RMLA Youth Art Contest was

***Molly Bearden***

11 years old  
Of Sheridan, Wyoming

## Profile of RMLA Members

**By: Mary and Paul Robbins**

I've been in the RMLA going on two years, just about as long as we've had our llamas. I got our llamas because I was tired of loosing our sheep to dog attacks. In fact, I celebrated my 50<sup>th</sup> birthday by buying two bred female llamas with a baby on the side. One of the females is an excellent guard llama.

I've been a spinner and a weaver for over 20 years. I took spinning lessons from the late Mickey Heyl of Evergreen, Colorado. Mickey had a small acreage and around four sheep. Her place inspired me. I said that if I ever had acreage, I was going to have my own sheep. Six years ago, my husband Paul and our son Tristan and I moved to two acres near Ft. Lupton, Colorado. The following spring, after attending a weaver's guild meeting, I got two sheep and three Angora goats before our place was fenced. Over the years we had dog attacks. The last straw was when dogs killed two orphaned lambs I had sweated over for three months. Shortly after loosing the lambs, we attended the Adams County Fair. I was talking to two teenage boys from Cheyenne, and told them of my sheep losses. They said to get a guard llama. That's all it took. I had our llamas by the end of the week. I don't care

if I spin llama or sheep.

Our sheep have since died off. We now have eight llamas and three Angora cross goats. We like our llamas so much, we outgrew our place near Ft. Lupton. Around August 1<sup>st</sup> we moved to 160 acres 12 miles south of Alamosa in the San Luis Valley. We are easy to find. We are busy putting in a new home in Alamosa County, where Rio Grande, Conejos, and Alamosa counties come together in a T. We are also four miles south of the Monte Vista National Wildlife Refuge where the Sandhill Crane Festival is held every spring. Last year Tristan showed one of our llamas at the Weld County Fair. Eventually, we would like to start packing with our llamas.

If anyone is in the area, stop by and say hi! Our new ranch name is Alto Llano Llamas. In addition to our llamas, we also enjoy buck skinning, black powder shooting, and I make porcelain dolls from scratch.

Mary Robbins  
Alto Llano Llamas  
251 County Road 12 South  
Alamosa, CO 81101  
(719) 589-4525

\*

## Locals Win Carbondale Llama Show

**By: Linda Hayes**

The first llama show to be held in Carbondale had entries from as far away as Oklahoma, but it was the locals who took the blue ribbons.

Olivia Fanizza of Carbondale, age 11, won the Showmanship class; Rachel Owens of Emma, age 17, won the Open Obstacle class; and Gail Owens of Emma, adult, won the Pack class. The show was held at Linda Ranch in the Missouri Heights just outside of Glenwood Springs and Carbondale.

The show was a "schooling" show and was designed to teach llama owners what to do when they enter the large stock shows. Linda Hayes, an ALSA judge and owner of the ranch, taught a seminar on showing during the morning. In the afternoon there was a judged show with Pack, Obstacle, and Showmanship classes. Seminar participants practiced what they had been taught by showing in the actual classes. Rosette ribbons were given to the first three places in each event.

Linda Hayes recently moved her herd of llamas to Colorado from Texas. She has held clinics and shows in Texas for a number of years and hopes to do the same in the Carbondale area. For more information, contact Linda Hayes at (970) 704-1447 or [llamathings@sopris.net](mailto:llamathings@sopris.net).

\*

**HANCE RANCHA**

ALPACAS

FIBER

LLAMAS

OWNERS

ROBERT & BARBARA HANCE

11818 W. 52ND AVENUE

WHEAT RIDGE CO 80033

(303) 422-4681

FAX (303) 422-3568

Email: [hancelama@att.net](mailto:hancelama@att.net)

FIBER ARTIST

MARY HANCE

11855 W. 52ND AVENUE

WHEAT RIDGE CO 80033

(303) 467-3261

Web: <http://home.att.net/~hancelama/>

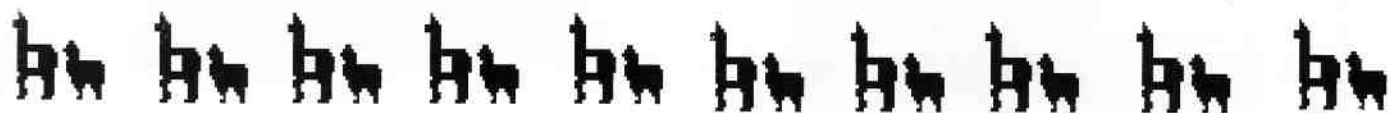
# LAMA TO LUXURY SUCCESS AT RMLA FALL CONFERENCE

**By: Karen Kinyon**

**A** special event was held at the RMLA Fall Conference in Littleton, CO on October 27, 2001. The first Llama to Luxury team worked to hand spin and weave a llama shawl in four hours. The team members were Diane Walker-Tompkins, Handspinner, Karen Kinyon, Handspinner and Judy Wolff-Mills, Hand weaver. Diane and Karen spun llama roving into singles then plied them into a 2 ply yarn. Yarn was

then given to Judy who wove the shawl on a pre-warped Baby Wolf eight harness loom. Fiber and yarn were donated by the Rocky Mountain Llama Fiber Pool. The shawl was a beautiful cream and butterscotch combination, woven in a 3 harness lace pattern. At the end of the day, the shawl was auctioned in a hearty display with Larry Lewellyn and Rob Tompkins working the audience. In the end, Betty Robertson was the high bidder and took the shawl home. \$250.00 was raised and contributed to the cost of the RMLA Fiber Co-op Trailer expenses.

This was a great event and a wonderful way to demonstrate how a Llama To Luxury event works. Next year, we hope to have more teams and a real competition so that it is even more fun. Start practicing now and contact Karen Kinyon at (970) 568-3747 for additional information or to sign up your team for next year. \*



## Christmas is just around the Corner...



## Order your RMLA Gear Now !!!

**Denim Shirt: \$30.00 + \$3.50 S & H**

**Hat: \$13.00 + 2.50 S & H**

**(Colorado Residents add 2.9% Sales Tax)**

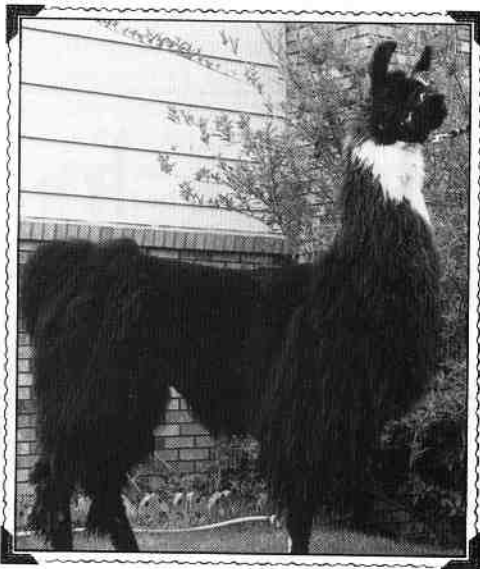
Submit your order to:  
 Jill Knuckles, RMLA Secretary  
 2970 A 1/2 Road  
 Grand Junction, CO 81503

E-mail [talltaillamas@bigplanet.com](mailto:talltaillamas@bigplanet.com)

Phone: 970-241-4112



## Top Notch Boys...



~~DDL Blaze~~

Very Handsom Top Flight Son throwing  
Champion Babies. Outstanding  
Conformation and Wonderful Fiber.



~~Papa San~~

Incredible Papa Noel Son with  
Extraordinary Fiber and Beautiful  
Blond Reverse Appy Coloring.  
*Thank You Jan Day!!!*



~~Tall Tail's Calipso~~

Show Ring Proven Conformation topped  
off with Super Silky Suri Type Fiber.  
Grand Nationals Qualifier 1999 & 2000.



**Tall Tail Ranch**  
Breeders of Quality Llamas  
& Exotic Peafowl

Robert and Jill Knuckles  
2970 A 1/2 Road  
Grand Junction, CO 81503  
(970) 241 - 4112



E-Mail: [talltaillamas@bigplanet.com](mailto:talltaillamas@bigplanet.com)



ROYAL CANADIAN MOUNTED POLICE

1. The purpose of this document is to provide information regarding the recruitment process for the position of Constable in the Royal Canadian Mounted Police.

2. The recruitment process is open to all Canadian citizens and permanent residents who are at least 18 years of age and have a minimum of a high school diploma or equivalent.

3. The recruitment process consists of several stages, including a written examination, a physical fitness test, and a background check.

4. The written examination will assess your knowledge of general knowledge, verbal ability, and numerical ability.

5. The physical fitness test will assess your physical fitness and ability to perform the duties of a Constable.

6. The background check will assess your criminal record and other relevant information.

7. The recruitment process is competitive and the number of positions available is limited.

8. The recruitment process is open to all Canadian citizens and permanent residents who are at least 18 years of age and have a minimum of a high school diploma or equivalent.

9. The recruitment process is open to all Canadian citizens and permanent residents who are at least 18 years of age and have a minimum of a high school diploma or equivalent.

10. The recruitment process is open to all Canadian citizens and permanent residents who are at least 18 years of age and have a minimum of a high school diploma or equivalent.

11. The recruitment process is open to all Canadian citizens and permanent residents who are at least 18 years of age and have a minimum of a high school diploma or equivalent.

12. The recruitment process is open to all Canadian citizens and permanent residents who are at least 18 years of age and have a minimum of a high school diploma or equivalent.

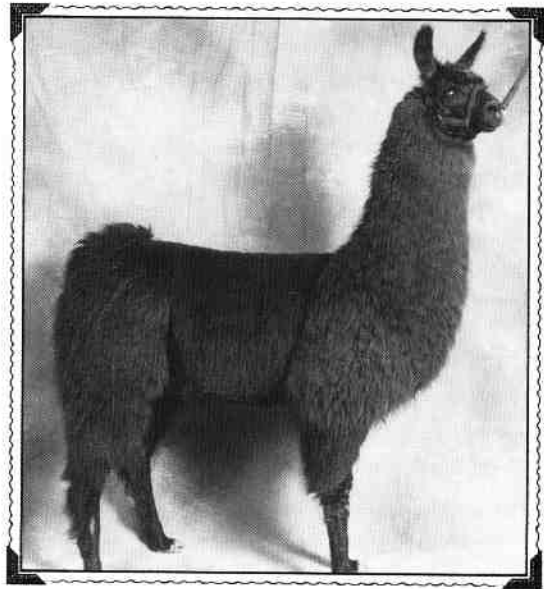
13. The recruitment process is open to all Canadian citizens and permanent residents who are at least 18 years of age and have a minimum of a high school diploma or equivalent.

14. The recruitment process is open to all Canadian citizens and permanent residents who are at least 18 years of age and have a minimum of a high school diploma or equivalent.

15. The recruitment process is open to all Canadian citizens and permanent residents who are at least 18 years of age and have a minimum of a high school diploma or equivalent.



~~Feather RTC~~  
Grand Champion Medium Wool  
Female - 2000 Grand Nationals



~~Tall Tail's Jazz Jubilee~~  
Qualified for 2000 Grand Nationals,  
Medium Wool Yearling.



**Breeding  
Grand Champion  
Girls !!**



~~Bailarin De Fuego~~  
6th Place Heavy Wool 2 Year Old  
Female - 2000 Grand Nationals

**Think of the  
Possibilities...**

**Limited Breedings  
and Llamas for Sale.**



## *Accentuate the Positive!*

**By: Sandra Payne**

**T**he ALSA Rocky Mountain Regional was held in Denver, CO on October 13<sup>th</sup> and 14<sup>th</sup>, 2001 with 58 ranches represented. Kicking off the start of the show, all the youth of the region presented an impressive and moving opening flag ceremony. Exhibitor present from every state attending brought the flags from their states, which the youth then carried into the show ring to "God Bless America". Chandra Schartz sang a beautiful rendition of "The Star Spangled Banner", while our flag was being presented. After brief comments affirming our bond as a llama community and as a unified America, our wonderful youth then filed from the show ring as a Lee Greenwood CD played "Proud to be an American". Our future is in good hands, the hands of our youth.

Also accentuating the positive was the huge contribution of enthusiasm and hard work by well over 40 volunteers. Our performance crew, led by Larry Lewellyn and Jill Knuckles, laid out challenging courses in a very efficient and timely manner. Every region "should be so lucky" to have so many willing hands! We then ate a delicious dinner, followed by the "fun and games", LED BY Brianna Livengood and Emily and Dani Varela. Our only problem of the day was not having more time to enjoy our time together.

Our halter classes on Sunday went equally well. Volunteers filled all the positions available,

while more volunteers waited to back them up. Ribbon presenters were especially impressive, ranging from a grandfather and grandson duo to two beautiful young ladies from Wyoming. Our show clerks kept the "by-then brain-dead superintendent" on track, while teaching new volunteers and recording results. Shouts of congratulations from the audience of exhibitors greeted each and every announcement of class placings. Our Judges moved us through the day efficiently and our 2001 Regional was over.

Another highlight of our event was the acceptance, approval, and sale of T-shirts and sweatshirts. Even with a foul-up in delivery, these beautiful and appropriate designs sold out in a short time. Featuring three llamas gazing up at a flag of the United States (thanks to Shawn Norman, the Central Regional Superintendent). The first shipment finally arrived and most of them were pre-sold and sent to buyers from about ten states. Thank you to all the people who wanted to show their support of our regional and country!

Our Regional proved beyond a shadow of a doubt our unity. RMLA, LOCC, and other llama organizations worked together as a well-oiled machine. There isn't enough space to list or thank each one of our group who supported the show. So many new volunteers learned so well from more experienced hands how to put on a successful and fun show. There isn't one person who can perform the task of "running" a show. But all of us working together proved that we can! How much more positive can it be!

We'll see you again, same time and place in 2002! \*

**RMLA.COM**

**Your source for  
the information  
you need in the  
lama industry.  
Check it out  
today!**

**ALSA Rocky Mountain Regional  
2002**

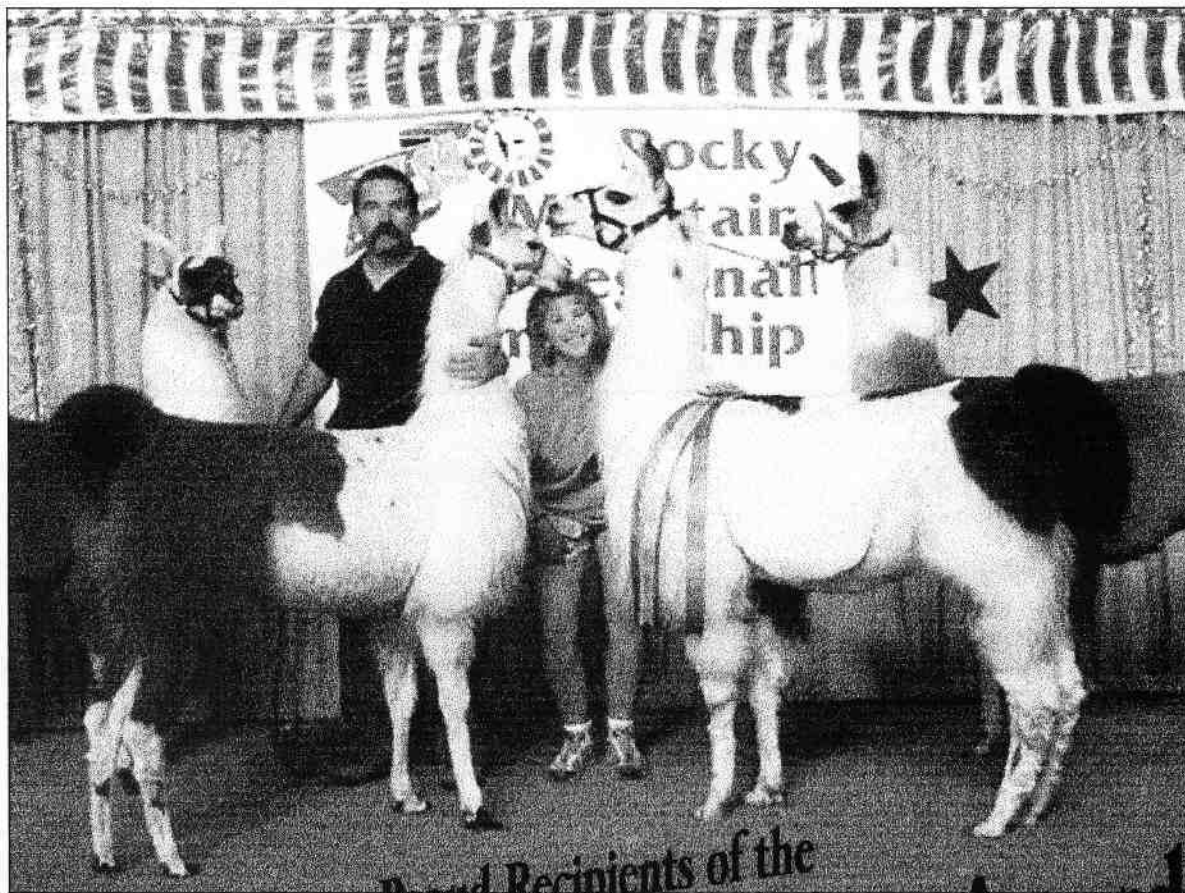
**ALSA Appoints new  
Co-Superintendents**

**Lougene Baird & Larry Lewellyn**

**If you have volunteered in the  
past, call Larry or Lougene as  
soon as possible to secure your  
favorite volunteer position!**

# Congratulations !!!

Deanna, Larry, Pikachu, Dakota  
Ramble and Pongo.



Proud Recipients of the  
**Premier Ranch Exhibitor Award**  
at the Rocky Mountain Regional !!!

**We Love Ya!**  
Rob and Jill

## Fairplay Llama Camp Performance Show

By: Mary Wickman

**T**he Fairplay Llama Camp Performance Show took place in the Pike National Forest, at the Beaver Creek Recreation Area in Colorado, the day after the Fairplay Race/Walk Event. We camped out at the llama camp, did the llama race, camped out again, and then had the performance show — all of which made for a very busy weekend! I was very happy and surprised when we had 34 llamas register for the show, as I had been hoping for at least 15.

For me, the highlight was Petra, who is blind, taking a llama through the obstacle course and how encouraging and supportive all the other participants were toward Petra. I think everyone would have been overjoyed had she placed. Remember, this course was in a natural setting with lots of obstacles that were not even part of the judged obstacles! Other highlights included how great all the volunteers, participants, and Judge were. One person, not a llama owner, stated how impressed she was with how helpful

everyone was and how nice they were to their animals.

The weather was great. The llamas seemed to enjoy competing in a natural environment. With 31 llamas in the Obstacle course, 23 in PR, 23 in Pack, 8 in short stack, and 6 pack strings, there were relatively few refusals. One participant's comment was that "if you have to wait to enter your class, this is a nice place to wait."

Lots of fun was had putting the courses together with the help of Patti Morgan and making up little stories to go with course — "walk into a bushy trail, realize it is the wrong trail and back out; carry a precious item (balloon) on your pack and deliver its safely; back through the sleeping campers.

The biggest problem was to make sure the obstacles were still there the day of the show: sometimes deadfall disappears into fire places or someone is camping in the middle of the course!

### Llama people are so great!

Being the superintendent gives you a different viewpoint of the show! \*

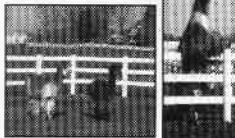
## IMPORTANT NEEDS — GREAT PRODUCTS

### WEIGHING



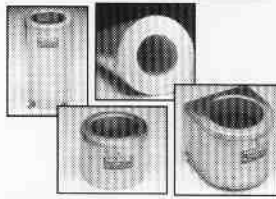
A complete electronic scale for crias, adults, fleece, all needs - made for alpacas and llamas

### FENCING



Heritage premium vinyl. The safest & most beautiful fence. The fence that lasts forever without maintenance or replacement needs.

### WATERING



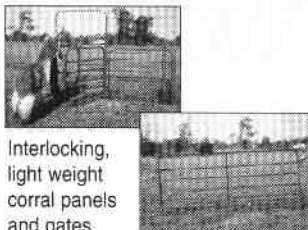
Nelson Automatic Waterers

### WASTE DISPOSAL



Millcreek spreaders have been rated the best of the small spreaders.

### CONVENIENT FOR HANDLING & SHOWING



Interlocking, light weight corral panels and gates.

### FLY CONTROL



We offer a safe non-chemical system used by hundreds of camelid owners.

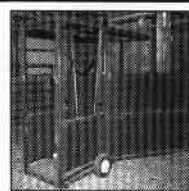
### TRAILORING



Stainless steel for beauty, durability and nicest ride.

### CARE, HEALTH CARE, MAJOR TASKS

These chutes are used at major llama & alpaca veterinary universities including Auburn, Ohio State, Oregon State, Michigan State, and University of Pennsylvania.



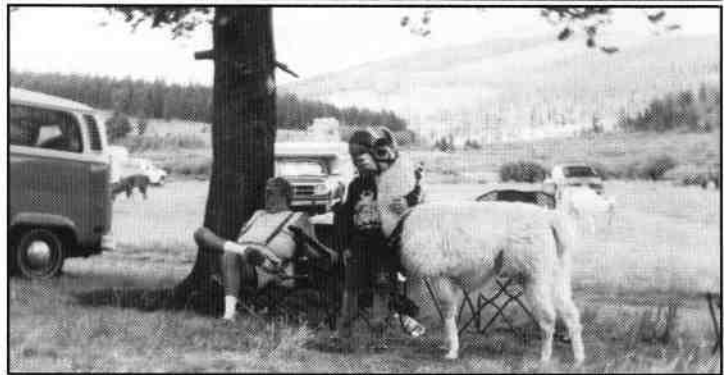
Offered by Useful Farm Products & Fencing Forever

For additional information, pricing, shipping, costs & ordering contact us at 3540 76th St., Caledonia, MI 49316  
Call 888-771-3276 • Fax 616-698-0870 • e-mail sales@usefulfarm.com

This terrific event was held on July 27<sup>th</sup> at the Fairplay Llama Camp, where all the people stay for the Fairplay Llama Pack Race. What a beautiful setting for a performance show for llamas and their owners. People came from all over for this event and it was so nice to see old and new faces. The new faces attending made this event extra special. I think the stream, complete with running water made many animals nervous, it was too funny!!

Finally, for Mary Wickham, Roger Miller, and all the other helpers, you all did a fantastic job!!! Thank you so much. I know Harold Herbold earned his money this day. Next year, you all need to come out and participate in this very fun event. I hope you enjoy these photos and will see why it was a fun time.

*Larry Lewellyn*



**Patti Morgan**

*October - April*  
 12120 282nd Rd.  
 Arkansas City, KS 67005  
 316-442-4996 fax: 316-442-1590

*May - September*  
 PO Box 933  
 Buena Vista, CO 81211  
 719-836-4510

[www.rock-n-mllamas.com](http://www.rock-n-mllamas.com)

*Special Thanks to  
Ollie Llamas  
From RMLA*

**F**or some of you who have not heard, Dick and Linda Reichle are leaving the llama products and equipment business. They have been strong supporters of the llama industry and have supported llama organizations across the country.

Dick and Linda have consistently provided outstanding products to llama owners for many years. We will miss their pleasantries at the llama shows, as well as their friendship, laughter, and of course, the coffee they gladly share. The Reichles will be missed by all. Their absence will be noticeable at shows and events, and we will especially miss Dick's voice calling for Mollie and Maverick.

**Dick and Linda, thank you so much for all you have done. We are proud you are fellow RMLA members and hope you will stay with us during this next chapter in your life. Good Luck, Take Care, and Keep in Touch!** \*

*LOCC FALL CLASSIC  
2001 Colorado Springs,  
Co.n*

**By: Mike Shealy, Superintendent**

**O**n a beautiful weekend in early September, Llamas of Central Colorado presented a great show in the Penrose Equestrian Center indoor arena, an excellent place for a llama show. 210 llamas were shown in 241 class entries by 58 ranches. A good time was had by all. Many thanks to the volunteers who helped make this show a success.

The Judge for all the Youth Classes and Halter Classes was Judie Moser of Redmond, OR. Harold Herbold was first judge on the balance of the performance classes and Judie was second performance judge when she finished Youth classes.

Hope to see you next year. \*

# Caring for Llamas and Alpacas

A world reknowned RMLA publication. Orders shipped around the planet... (and elsewhere!)

To Order:

<http://www.rmla.com>

or

Send your name, address, city, state and zip and

\$23.95 plus \$4.00 S & H

(CO residents add 3% sales tax) to:

Keith & Katy Wegner

RMLA Bookstore

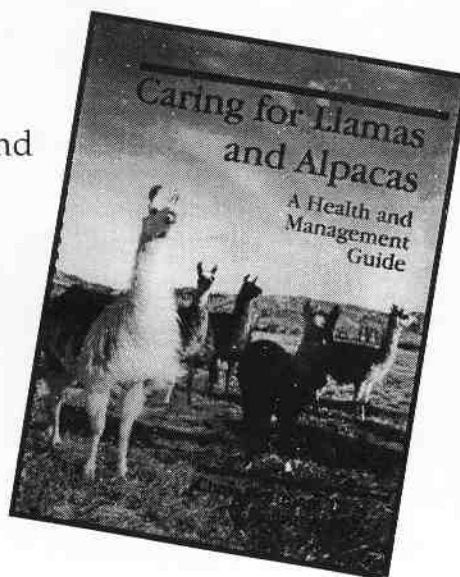
17190 W. 57th Place

Golden, CO 80403-1113

(303)273-9445

e-mail: [k2wegne@attglobal.net](mailto:k2wegne@attglobal.net)

ISBN:0-9622768-2-0



## Selecting A Packer for the More Demanding Hiker

**By: Charlie Hackbarth**

**Past President, RMLA**

**Mt. Sopris Llamas Unltd., LaVeta, CO**



**I** will focus on the generally accepted minimal criteria for selecting a pack llama to be used by the more demanding hiker. What we're looking for is a healthy, mature, well-conformed athletic llama, which is adequately trained and well conditioned. He

must have the will to work, and a reasonably good attitude. That's not too much to ask, and certainly this type of llama should be the minimum goal for any serious breeder of pack stock.

Let me add a footnote here. My continual reference to the pack llama as being male should not be interpreted as an attack on feminism. Until recently, few people considered using female llamas for packing, mainly because it didn't make sense to take a pregnant \$10,000 female with a baby at her side into the wilderness when \$1,500 males were available. Now that prices have dropped to a reasonable level, some people are starting to think differently about the female's role as a packer. I am in the process of training a string of five excellent females for my personal use. Although I'm confident that they will pack every bit as well as the males I've used in the past, until I've had first hand experience with packing females, I will continue to refer to the pack llama as being male.

**PHYSICAL MATURITY:** If you are interested in packing immediately, choose a llama that is over three years old. Putting heavy loads on your llama during his growing years could do damage and shorten his packing career. It is certainly all right to train a one-year-old llama to carry a pack, and even to take him on the trail, but don't add any weight. An occasional trip with a two-year old carrying 30 or 40 pounds (including the saddle) isn't going to hurt anything. The problem is that there is a tendency to exceed those limits and it's not worth taking the chance. A typical load for a mature average-sized llama who is in good shape is 80 pounds.

**SEXUAL MATURITY:** Trying to figure out the

hormonal effects on the behavior of a male of any species is very complicated. It has been said that a sexual thought passes through the mind of a mature human male every forty seconds. If this is true (ignoring, of course, arguments as to whether there is even such a thing as a mature human male) then, from my observation at least, it also must be true that very few seconds transpire without a sexual thought passing through the mind of a mature male llama. These thoughtful interludes interrupt the normal cogitative patterns, and can cause behavioral changes that range from mild hearing loss to complete obliviousness. Perhaps this explains why repetition in training is so important. It is also important to note the similarities in the nature of these two male species when put in different environments. For example, while unconfined in the mountains, both the human male and the male llama can relax and focus on catching fish or eating grass, whichever the case may be, for days at a time without having a mental lapse or a confrontation with another male. Bring these same males home around the female influence and suddenly they become mindless territorialists. A solution to this problem, at least for the male llama, is castration. A gelded llama is easier to manage at home, and I have no preference between an intact male and a gelding on the trail. I see no reason to keep a male llama whole if you don't intend to use him for breeding. Two years or older is the recommended age to geld.

**GENERAL HEALTH:** This is covered in the book *Caring for Llamas and Alpacas*, Chapter 1. Be sure to have a vet check over an animal before you buy him.

**THE WILL TO WORK:** Spotting a llama who has the will to work, sometimes referred to as "heart," is one of the most important and difficult things in choosing a pack llama. This trait can be disguised by inadequate or improper training; inadequate conditioning; immaturity; poor general health; uncomfortable pack equipment; the llama's inexperience with the workload you're requiring; or the handler's inexperience. Some llamas have the will to work but lack the required conformation to meet the demands of a physical trip. The only true way to find out if a llama has the ability to meet your hiking needs is to pack him under conditions similar to that which you will be requiring. This automatically excludes a lot of potential pack llamas, but takes most of the guesswork out of the process. Ideally, the llama you evaluate will be mature, with the above conditions being positive. If he packs to your satisfaction, your visual assessment of his physical and mental makeup was correct. If he doesn't, try to figure out why, and if you feel good about your original assessment, don't give up on him too soon. Your requirements may be too demanding for any llama. A llama is flesh and blood, not a machine. You've taken the 40-pound pack off of your back and added twice as much to his. He will get tired and hot and will need a break to catch his breath. Show some empathy. Slow down

*(Continued on page 22)*

(Continued from page 21)

and enjoy the experience, and if you are unable to do that, you probably should be carrying your own pack.

You will be taking more of a chance on a younger llama who has not had an opportunity to prove himself under the requirements listed above, and you will have to wait until the llama matures before using him for serious packing. Because of these two factors, you should also expect to pay significantly less for an unproven pack prospect.

If you have never taken a pack clinic and you don't have experience with llamas on the trail, it will be very difficult to convince anyone to trust you to take their llama on the test drive that you have in mind. It will even be difficult to purchase a llama with a guarantee that if he doesn't meet your expectations, you can trade him for another llama or get your money back. If you can locate someone who sells pack llamas and who also leases llamas, teaches overnight pack clinics, or packs commercially, there is a good chance you can learn about packing and find a packer all at once. The important point is that you need to have some experience with handling llamas on the trail before you can begin to evaluate or even feel comfortable with anyone else's evaluation. Otherwise you are depending on blind luck or someone else's opinion.

There will always be cases where, even after the buyer does everything right, the chosen llama just doesn't meet his or her needs. If that happens, remember that there is someone for everyone. Sell your llama and look for another.

**WELL CONFORMED, ATHLETIC LLAMA.** Every pack llama, no matter how strong his will to work, has limitations. Conformation ultimately will determine those limitations. The complex architecture of the pack llama is made up of bones, cartilage, muscles, and tendons which work together to support a body in motion against the forces of gravity. When these parts are properly proportioned and arranged to near perfection, the Eiffel Tower, a tribute to aesthetic engineering, fades by comparison. Mr. Eiffel did a good job of designing a tower that would stand under its own weight, but think how complicated it would be to design a structure that moves quietly, smoothly, and efficiently over mountains, fights its way through and over timber, and crosses slippery swift streams, all with a weight equal to one fourth of its own hanging across its back? When we're talking about a tower, we can call it one of the seven wonders of the world. When we're talking about an athletic pack llama, we just say he is well conformed.

And now you want me, a rote learner who flunked Structural Kinesiology 101, to explain to you

about the conformational correctness of a system so complex that even Einstein would have been hard pressed to fathom it? I am indeed flattered, and will, of course, try to reveal what I know, in as brief and simple a manner as possible, so that you may understand.

**BALANCE.** The first thing to look at when evaluating a llama is its general balance. Are the parts proportional to the whole? Or does the back seem to be too long, the feet too small, the head too heavy or the legs too short? Do the legs look like they are under the llama correctly, or do they look strange in some way? If the llama you are observing affects you like a picture hanging crooked on the wall, then something is probably wrong. The longer llama's wool, the more difficult it is to spot structural problems. Heavy wool in certain places can make the llama look out of proportion. A llama in good condition will have a slight curve in his back from withers to pelvis, which can't be seen, unless the llama is sheared short or is soaking wet. You have to feel the curve with your hands. You have to feel the leg cannon bone on a woolly llama to gauge its size.

Another difficulty in evaluating the structure of a llama is the fact that they are constantly in motion and capable of positioning their body parts in lots of abnormal ways.

Having an understanding of llamas' different gaits, then watching their motion as they walk and run, will help you spot potential problems. If their motion is stiff or jerky, or the stride seems short and choppy, or the llama appears to waddle from side to side, something's not quite right.

Abnormalities in the legs such as knock-knees, sickle hocks, or cow hocks (Caring for Llamas and Alpacas, Chapter 1, including the sketch on page 9, identifying the parts of a llama), if severe enough, can immediately disqualify a llama from packing. Even in less severe cases, such abnormalities could render him useless over a period of time. Any indication that a llama is breaking down in the fetlock (ankle) should be reason for immediate disqualification. The angle at the pastern should be close to vertical. Spotting conformational defects is not easy, but after you have done some observing and comparing, you should be able to spot major problems. Always have a vet check out a llama before you buy him.

**TRAINING.** Llamas are intelligent animals, but they are not automatic packers. It takes know-how, time, and patience to train any animal. The ideally trained and experienced pack llama:

- A. Loads easily into a vehicle.
- B. Follows on a slack lead without holding back, stopping, circling or walking on the heels of the one leading.
- C. Stands while being saddled and loaded.
- D. Crosses streams, bridges, and logs without balking.
- E. Does not lunge or jump across small streams.

- F. Moves freely and gracefully over steep, rocky, or slippery terrain.
  - G. Is good-natured around people and does not cause problems with the other llamas.
  - H. Steps or eases over logs rather than lunging.
  - I. Can be left without concern on a picket line.
  - J. Is neither overly sluggish nor skittish.
  - K. Can easily be caught if he gets loose in the backcountry.
  - L. Will lead in a pack string.
  - M. Has an awareness of the load being carried, and avoids hitting the panniers on trees.
  - N. Will allow his legs to be lifted and his feet to be checked.
  - O. Doesn't panic when straps or ropes touch his legs.
- A llama that has most of these skills, in addition to the will to work, will be a pleasure to have on the trail, and you should expect to pay more for him.

**CONDITIONING.** Conditioning, or fitness, means increasing the power to move. If someone is having trouble getting their llama to move on the trail, nine times out of ten, it will be because the llama is not used to doing what you are asking him to do. Chances are his is overweight and out of shape. He probably hasn't ever had to work so hard and doesn't know what is expected

of him or what he is capable of doing. Athletes not only have to learn their skills, but they have to be physically fit before they're ready to play the game, and if they aren't, the game will be a miserable experience. It's no different for a pack llama. A llama who works week after week in a commercial pack string will be in good physical conditions, and he will know what is expected of him come game time. A llama that is only used three or four times a summer can't be expected to perform for a serious hiker who is already in shape. Check the drawings on page 38 of Caring for Llamas and Alpacas, for indications of a llama's condition.

**ATTITUDE.** Pick a llama that has a good disposition. A trained llama should feel comfortable about being handled. If his ears are constantly laid back or he spits at you, consider another llama. Kicking is probably an indication of a lack of training rather than a bad attitude. If training is weak in this area, expect it to be weak in other areas as well. The llama should not be overly aggressive with other males while at home and should definitely get along with other llamas on the trail. An overly nervous or jumpy llama wastes energy, is hard to handle, and can be dangerous. Many times an over docile llama that likes to eat a lot is not motivated to move quickly up the trail.

**WOOL.** Short to medium length compact wool that reminds me of sheep wool is ideal. It's easy to keep clean and stays out of the way of the rigging. It should have a good cover of guard hair to ward off the elements. White is my favorite color because I believe white llamas stay cooler and are not bothered as much by flies. Trim or shear long wool to help keep your llama cool, but cut no shorter than 1 1/2 inches to prevent hypothermia in the high country.

**EARS.** When asked about his preference on the shape of a llama's ears, Stan Ebel once commented that "as long as they have two of them and they both work, that's all that matters." I think that sums it up as far as the pack llama goes. The beauty in a good athletic pack llama will be seen in its balance, conformation, and movement. If there are any flaws, let them be cosmetic. \*



## LLAMA DEARA RANCH

**Eco-partners and Interns** – Hannah-Leigh Bull of Llama Deara Ranch, in Abiquiu, New Mexico, seeks an eco-partner to create a sustainable living environment and develop a center where visitors can restore themselves and learn more about earth restoration and human healing. A beautiful two-room adobe apartment on the property is available to the potential eco-partner for \$650 rent.

Eco-partnership in Llama Deara Ranch entails joint rights and responsibilities, financial and otherwise, for the property and center.

She also seeks interns or students interested in llama husbandry and environmentally sound building and crop-production practices. Accommodations and compensation are negotiable.

For more information and the Llama Deara Ranch project statement, call 505-685-9416, fax 505-685-4197, or send email to [hlbull@cybermesa.com](mailto:hlbull@cybermesa.com).

### DAZ SPINNER

Blending Fibers  
for you

Alpaca – Llama-  
Merino-Silk-Dog



### Judy Glaser

Hand spinner of exotic fiber

43338 Midsummer Ln.  
Elizabeth Colorado  
80107

Phone: **303-646-6311**

E-Mail: [dazspinner@AOL.COM](mailto:dazspinner@AOL.COM)



## Thank You!

To the Laramie County Fair Board, Exhibitors, Sponsors and Volunteers who made the 2001 Laramie County Fair Llama Show a success, thank you for your support. In 2001 the show expanded from 29 classes in a one-day format to 42 classes in a two-day format. We moved the show from the last weekend of the fair to the first weekend for greater public exposure. This move also avoided date conflicts with other llama shows in Wyoming. The 2001 show featured 92 llamas from five states in performance and halter classes and a fiber show with 26 shorn llama fleeces and 7 handspinner's choice entries. In addition, two alpacas were exhibited in a public education context. We offered a full youth show and we had a delightful picnic in Cheyenne's Lions Park after the first day of the show.

I hope that those of you who have attended our shows in 2000 and 2001 will again "Consider Cheyenne in 2002" as part of your show circuit. The 2002 show dates will be advertised in future issues of the *RMLA Journal*. I appreciate your helpful comments and suggestions. I am receptive to your input. I am motivated to take this show to a higher level year after year. Here are some of my goals for the 2002 show:

- "Llamas 125" (I seek 125 llama entries)
- "Alpacas 10 X 2" (I seek 10 alpacas and 10 alpaca fiber samples for a public education booth).
- "Youth 20" (I seek 20 youth exhibitors).
- "Fiber 55" (I seek 40 shorn llama fleeces and 15 handspinner's choice entries)
- "Sponsors 10" (I seek 10 new sponsors).
- "Excellence in Obstacles" (I pledge to provide you some of the most realistic and challenging performance class courses found anywhere).
- "Free Picnic" (The free sponsors, exhibitors and volunteers picnic returns. Remember, y'all got to eat somewhere so it might as well be on me in Cheyenne).

If you have an idea or question concerning the show give me a call, drop me a line or send me a transmission.

Be well,



Robert Tompkins, Show Superintendent  
Laramie County Fair Llama Show  
8216 Stagecoach Road  
Cheyenne, WY 82009-9509

(307)635-2168 (residence telephone and fax), or by

Physical Address: 310 West 19th Street • Cheyenne, WY 82001, 4th Floor

Mailing Address: 309 West 20th Street • Cheyenne, WY 82001

(307) 633-4534 • Fax (307) 633-4511

## Jack Robertson Memorial Award

This idea was originated by Sandra Payne, over at the Western Slope RMLA dinner. We discussed criteria for this award and it was quite simple. The award should be given to the person who continues to support the llama community year in and year out. The award should be given at the regional show each year.

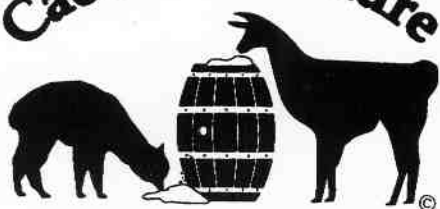
Sandra thought Betty Robertson was easily the best candidate for receiving this award based upon all Betty does for the different llama activities. Furthermore, it seemed quite appropriate to name the award The Jack Robertson Memorial. For those of you who do not know, Jack Robertson and Betty Robertson owned Green Valley Classics. They were llama owners and lovers since the early 1970's. Jack passed away in December 1995, and Betty decided to liquidate their herd.

While Jack & Betty were actively participating in various llama activities and organizations, their contributions were often and generous. Although Betty (who was the first lifetime RMLA member) no longer owns any llamas, she continues to attend many llama shows and meetings, and consistently provides support, humor and love to her human and llama friends.

This year the award was presented to Betty Robertson at the Annual RMLA Business meeting as she was unable to attend the dinner at the ALSA Regional Show. Next time you see Betty, give her a hug and a big Thank You – she deserves it.

We hope to find equally deserving llama industry supporters in the years to come. \*

**Cache La Poudre**



**MINERALS**

Call to Order  
or to receive a brochure  
**800-758-0825**

303-646-5829

### Supplement # 1

Diet consists of: Late or non-irrigated summer, fall or winter pasture; feeding grass hay. Contains a 2:1 calcium/phosphorus ratio and additional Vitamin E.

25 lbs, \$30      50 lbs, \$57

**Insure your Llama and Alpacas' Health for just Pennies per Day!**

Cache La Poudre Minerals are free choice Vitamin and Mineral supplements formulated specifically to balance your llama and alpacas' diet.

- ◆ The supplements do not add unnecessary calories or protein to the animals' diet
- ◆ They are tailored to meet different feeding situations
- ◆ They are palatable so the animals will consume them willingly
- ◆ They are safer than pellets, which may cause them to choke

**On the web at: [www.CLPMinerals.com](http://www.CLPMinerals.com)**

Zinpro® 100 also available

### Supplement # 2

Diet consists of: Late or non-irrigated summer, fall or winter pasture; feeding alfalfa or grass hay low in phosphorus. Contains additional phosphorus and Vitamin E.

25 lbs, \$30      50 lbs, \$57

### Supplement # 3

Diet consists of: Spring or irrigated pastures; feeding alfalfa or grass hay low in phosphorus. Contains additional phosphorus and recommended basic level of Vitamin E.

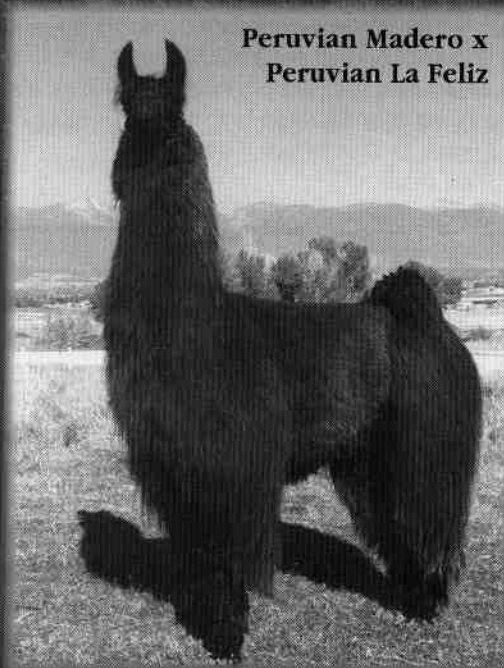
25 lbs, \$25      50 lbs, \$47

**Prices do not include shipping**

# Winners are bred, not made . . .

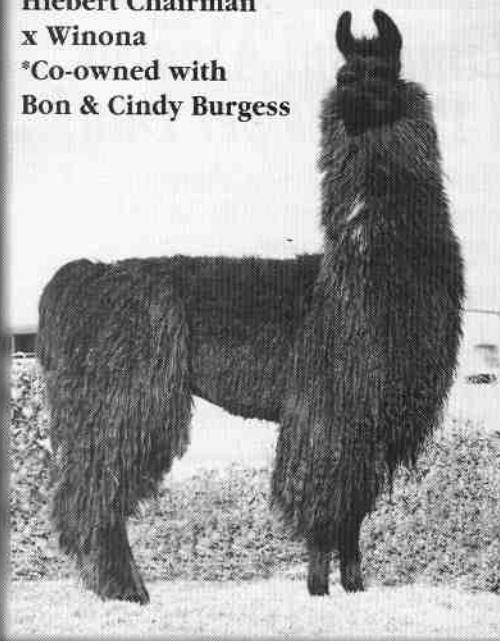
## Prince of Peru

Peruvian Madero x  
Peruvian La Feliz



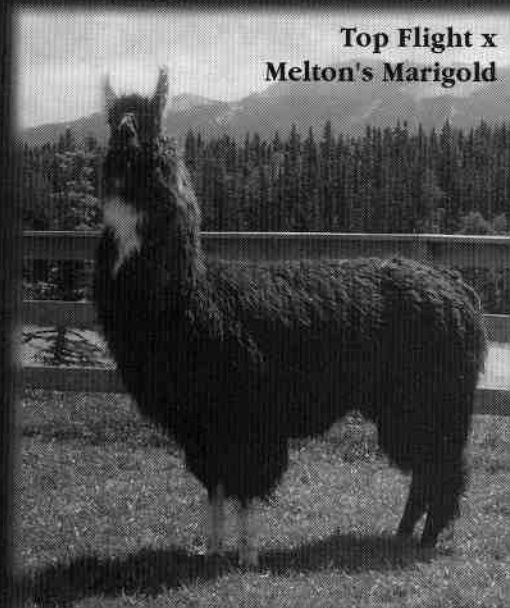
## Artisan\*

Hiebert Chairman  
x Winona  
\*Co-owned with  
Bon & Cindy Burgess



## Knight Flight

Top Flight x  
Melton's Marigold



Limited outside breedings, bred females  
and offspring available . . .

## Bitter Creek Llamas

Dick & Kim Murphy

(719) 686-0444

1761 Teller County Road 5

Divide, Colorado 80814

Email: [bitcrklamas@earthlink.net](mailto:bitcrklamas@earthlink.net)

## Classified Advertisements

**2002 Class Schedule @ Pax Ranch** in Longmont. JAN 12th — MACHINE KNITTING with Cheri Paxson. FEB.9th — SOFT SPINNING TECHNIQUE with Karen Kinyon. MARCH 9th — FELT YOUR OWN HAT with Mary Hance. APRIL 4th — WEAVING with Chris Switzer. MAY (second sat.) MACHINE KNITTING with Cheri. Contact Cheri Paxson at (303)777-4370 or paxknits@Yahoo.com.

**Llama Herd Reduction Sale**— Beautiful heavy wool males & females, all colors, 1/2 to 3/4 Chileans and 1/2 to 3/4 Bolivians, great bloodlines—males \$250—\$350; females \$500—\$700. Free rebreeding with any female purchase. Moonstar Llamas, Guffey, CO—Rodney Bryan. 719.689.9760 (11/01)

**Vinyl Fence**—Attractive, safe, virtually maintenance-free. Lasts forever. We offer Heritage, a premium brand, at very favorable prices. Ranch rail in 3-rail or 4-rail and privacy, pool and yard styles. For information and estimates, call 888.771.3276 or fax specifications

to 616.698.0800. [www.heritagevinylfenceusa.com](http://www.heritagevinylfenceusa.com) (2/02)

**For Sale** - Loom: 54" Leclerc Nilus counterbalanced loom, 4 harness complete with bench, \$700 or will trade for Lindruth double treadle spinning wheel in good condition; Llama cart: like new complete with harness, training video (Bobra Goldsmith, book & whip), \$500. Call/contact: Linn Jackson - 970.245.3833 or [Inslamalnd@aol.com](mailto:Inslamalnd@aol.com). (1/01)

### GREAT CHRISTMAS GIFT!!!

#### *The (Mis)adventures of the Llamas at Hunter Hill*

This funny collection of short stories about llamas and their humorous antics is the ideal Christmas gift for that person who loves llamas and who you're trying to think of something new to give. Sharon Hubbard has had llamas for many years and selected stories she has written over the past ten years to include in this delightful little book.

Order it today — \$9.95+\$2.50 S/H for one copy, \$10/50 per copy with fee S/H for two or more copies. Send check or money order to Hunter Hill, 985 15th Road, Lyons, KS, 67554.

### Journal of the RMLA—Advertising Information—effective August 2001

- **All art must be camera-ready.** Ad design cost is \$30 per hour, 1 hour minimum. Contact Marilyn Arnold at 303.841.5126 for more information.
- Color photographs are preferred. Electronic images should be on disk.
- This publication is printed in black and white. Line screen is 115 lines per inch.
- Each May, a promotional issue is published. The outside covers and centerfold advertisement are printed with a base color determined by the RMLA Board of Directors. Additional copies of this edition are printed for distribution to the public at llama and alpaca events.
- Mail all advertising materials to Marilyn Arnold, 11483 E. Ponderosa Lane, Franktown, CO 80116-9319. Include check payable to RMLA for the amount of the ad plus estimated design costs for art that is not camera-ready. **Full payment must accompany all advertising submitted.**

### Advertising Deadlines:

September 15, January 15,  
April 15, July 15

### Advertising Rates

All rates per issue	RMLA Member	RMLA Member	Non-Member	Non-Member
Ad sizes	1—2 issues	Same ad 3 or more issues	1—2 issues	Same ad 3 or more issues
Business card	\$12	\$12	\$18	\$18
1/4 page	\$24	\$21.60	\$36	\$32.40
1/2 page	\$48	\$43.20	\$72	\$64.80
2/3 page	\$66	\$59.40	\$99	\$89.10
Back cover	\$60	\$53.80	\$90	\$81
Full page	\$78	\$70.20	\$117	\$105.30
Inside cover Front or back	\$96	\$86.40	\$144	\$129.60
Promotional Issue Rates: Same color as Journal cover				
Full page per page (centerfold)	\$162	Different color add \$85	\$243	Different color add \$85
Back cover	\$130		\$207	

#### Classified Ad rates:

Members \$5 for up to 50 words per ad.  
Non-members \$10 for up to 50 words per ad.  
Additional words at \$0.15 for each word over 50.

*TSX Independence  
2001  
Introduction to the Show Ring  
Twice Grand Champion*

*An Incredible Top Flight &  
Chilean CeRoY Brown  
Grandson*



*Grand Champion JW Male  
New Mexico State Fair  
Grand Champion JW Male  
Western Slopes Classic  
1st Place JW Utah County Fair  
2nd Place JW EPWM  
2nd Place JW Caramie County  
3rd Place JW Banana Belt Classic  
1st Place Novice PR LCCC Full Class  
4th Place Open Class  
New Mexico State Fair*



*Firecracker X DDL Santa Libre*



*Robert & Jill Knuckles  
Tall Tail Ranch  
2970 A 1/2 Road  
Grand Junction, CO 81503*

*(970) 241-4112  
e-mail: talltaillamas@bigplanet.com*

*The Wonder & Beauty of Genetics are Here:  
Silver, Silky, Luxurious Fiber  
Sound Conformation & Terrific Disposition*

*Limited \$500.00 Introductory  
Breeding Available*

*Carry & Deanna Covellyn  
FootHills Clamas  
10715 W. Belleview Avenue  
Littleton, CO 80127*

*(303) 979-4815  
e-mail: fhllamas@aol.com*

RMLA  
11818 W. 52nd Avenue  
Wheat Ridge, Colorado  
80033.2032

Address Service Requested

Non Profit Org  
US Postage  
PAID  
Permit #561  
Kansas City, MO