

*The Journal*

**RMLA**



**Rocky Mountain Llama and Alpaca Association**

*Our 19th Year*

*May, 2001*

*...Educating our members and the public ...*



"SHED A LITTLE LIGHT ON YOUR  
HERD!"

WITH A BREEDING TO ONE OF OUR THREE ALSA HALTER  
CHAMPION HERDSIRES

SAQUARO



SANCHEZ CREEK LLAMAS

JOE & SANDRA PAYNE PO BOX 205 FLORISSANT, CO. 89816

719-748-9047

FX: 719-748-5001

e-mail: [joe@payne.msx.com](mailto:joe@payne.msx.com)

BOOK YOUR BREEDINGS NOW!

SIX ALSA HALTER CHAMPIONS  
AND MORE ON THEIR WAY!

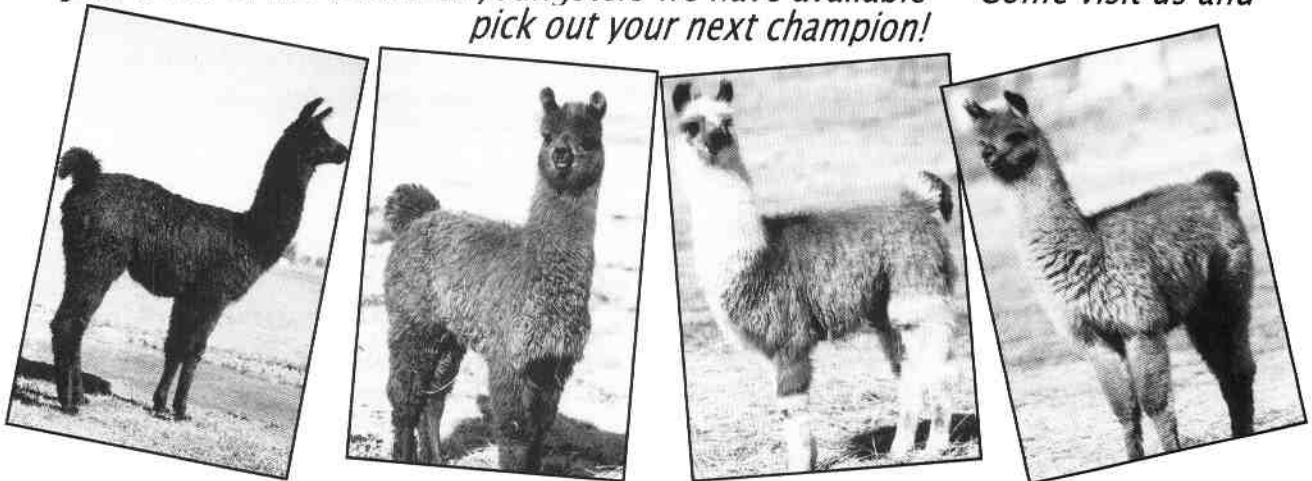
# Llamarage

BREEDERS OF CHAMPION SHOW LLAMAS

*We have what you're looking for!*



*Just a few of the beautiful youngsters we have available — Come visit us and pick out your next champion!*



Always a large selection available from our herd of over 70 quality llamas — from companion & pet quality, to potential packers, to top quality show/breeding stock. Weanlings to adults.  
Prices starting at \$300

Stud service to: ALSA Halter & Get of Sire Champion Gandy Dancer  
ALSA Halter Champion GLL Java  
1/2 Chilean son of RAR Richochet MGF Nottingham  
3/4 Chilean son of Papa Noel, Federally  
Bolivian/N. Amer. Cross Llamarage's Neon Moon

Joe & Mary Beth Hartsough  
P.O. Box 574

970/785-2463  
Platteville, Co. 80651

E-mail: [Llamarage1@aol.com](mailto:Llamarage1@aol.com)

## Consider Cheyenne in 2001!

The 2000 show was wonderful thanks to the 101 llamas and their exhibitors from 5 states which came to Cheyenne. I hope that those who attended in 2000 will return and that others will consider Cheyenne in 2001. This year's show will be August 4 and 5, 2001. The llama show will be one of the feature events the first weekend of the Laramie County Fair. The 2001 show expands from 29 to 42 classes. Some of the highlights of the 2001 show are:

- A Full Youth Show (with a special trophy to the top scoring youth exhibitor compliments of Double K Diamond Llamas, Ft. Collins, CO).
- Handspinner's Choice and Shorn Llama Fleece Classes (with felted llama hats awarded to Best Handspinner's Choice Llama Fiber and Best Shorn Llama Fleece compliments of Double K Diamond Llamas, Ft. Collins, CO). Handspinner's Choice entries must be postmarked to the Show Superintendent by July 1, 2001. The Show Superintendent must receive shorn Llama Fleece entries by August 3, 2001 at 6:00pm.
- Premiums paid in show ring and fiber classes.
- Attractive wall plaques awarded to Grand & Reserve Champions for both the Light/Medium and Heavy Wool Classes; Grand & Reserve Champions for Performance; Intermediate Youth Grand Champion Performance; Intermediate Youth Reserve Grand Champion Performance; Junior Youth Grand Champion Performance; Junior Youth Reserve Champion Performance; Best Handspinner's Choice Llama Fiber and Best Shorn Llama Fleece.
- Ribbons awarded in all classes 1<sup>st</sup> through 6<sup>th</sup> place.
- The addition of Produce of Dam and Get of Sire classes.
- A free Exhibitors & Volunteers Picnic on Saturday, August 4, 2001 from 5:00pm to 9:00pm at the Lions Park North Picnic Shelter within walking distance of the fairgrounds. Y'all gotta eat somewhere that night so make it Cheyenne with me and my friends.

For more information please contact:

*ROB*

Robert Tompkins, Show Superintendent  
Laramie County Fair Llama Show  
8216 Stagecoach Road  
Cheyenne, WY 82009-9509  
(307)635-2168 (residence telephone and fax), or by  
e-mail: [pwillamas@juno.com](mailto:pwillamas@juno.com)

Physical Address: 310 West 19th Street • Cheyenne, WY 82001, 4th Floor

Mailing Address: 309 West 20th Street • Cheyenne, WY 82001

(307) 633-4534 • Fax (307) 633-4511

# Cadfael kids are winners!

Here's one for your show team...



**Pheasant Hill Farm**  
Llamas

For fiber,  
packing  
and show

**PHF QUATTRO** 5/14/98 - Cadfael x PHF Picacho's Tejedora

2001 NWSS - First Place - 2 Year Old Heavy Wool Male  
First Place - Llama Fiber (tie)

Also available for stud service at an introductory fee.

## 12 Cadfael kids went to shows in 2000

The results: (combined halter & performance)

- 8 - Grand Championships
- 5 - Reserve Grand Championships
- 2 - Top 5 - Rocky Mountain Regional
- 3 - Top 10 - ALSA Grand National
- 16 - Firsts
- 21 - Seconds
- 13 - Thirds
- 9 - Fourths
- 8 - Fifths
- 8 - Sixths



## Cadfael

ALSA Halter Champion

Third Place - Adult HW Male - ALSA Grand National - 2000

John & Sharon  
Beacham

2380 - 95<sup>th</sup> St.  
Boulder, CO  
80301-4937

303-666-9437  
(Denver area)

800-465-2567

beachams@phf-llamas.com

# ROCKY MOUNTAIN LLAMA AND ALPACA ASSOCIATION

## BOARD OF DIRECTORS

President	President-elect	Vice President	Secretary	Treasurer	Past-President (non-voting)
Larry Lewellyn	Robert Tompkins	Jerry Dunn	Jill Knuckles	Lougene Baird	Bruce Ellis
10715 W. Bellview Littleton, CO 80127 303.979.4815 Fhllamas@aol.com	8216 Stagecoach Rd Cheyenne, WY 82009 307.635.2168 pwllamas@juno.com	14550 W. 50th Ave. Golden, CO 80403 303.277.1129 (voice and fax)	2970 A 1/2 Road Grand Junction, CO 81603 970.241.4112 Talltailamas@ bigplanet.com	2210 Pine Wood Road Sedalia, CO 80135-8444 303.688.5445 303.688.1887 (fax) lougene@att.net	10725 E. Camelot Dr, Franktown, CO 80116-9471 303.688.9466 Bee@bee.com

## COMMITTEES

Committee	Liaison	Chairperson	Telephone	E-mail Address
Bookstore	Lougene Baird	Keith/Katie Wegner	303.273.9445	k2Wegner@attglobal.net
Bylaws	Larry Lewellyn	Robert Tompkins	307.635.2168	pwllamas@juno.com
Continuing Education	Jerry Dunn	Vacant		
Elections	Robert Tompkins	Vacant		
Events/Marketing	Larry Lewellyn	Jerry Dunn	303.277.1129	beartrak@gte.net
Fiber	Robert Tompkins	Sharon Beacham Karen Kinyon	303.666.9437 970.484.6241	beachams@phf-llamas.com kdd@oneimage.com
4H Advisor	Jill Knuckles	Alaine Byers	719.742.6126	allama202@aol.com
Library	Jill Knuckles	Sharon Herbold	719.495.3092	ppwoolies@earthlink.com
Membership	Lougene Baird	Bob/Barb Hance	303.422.4681	hancelama@att.net
Research	Larry Lewellyn	Ron Baird	303.688.5445	ronbaird@att.net
Publishing	Lougene Baird	Camelid Kids—Barbara Flinn Journal—Ron Baird	307.683.2548 303.688.5445	cloudpk@wavecom.net ronbaird@att.net
Youth	Jill Knuckles	Barb Harris	719.275.9457	

## RMLA JOURNAL

Editor	Advertisements	Committee	Journal Deadlines	
Ron Baird 2210 Pine Wood Road Sedalia, CO 80135-8444 303.688.5445 303.688.1887 (fax) ronbaird@att.net	Marilyn Arnold 11483 E. Ponderosa Lane Franktown, CO 80116-9319 303.841.5126 (voice and fax) arnoldhm@earthlink.net	Bobra Goldsmith Diane Tompkins Katie Wegner Jill Knuckles Terry Lynch	August, 2001 November, 2001 February, 2002 May, 2002	July 1st October 1st January 2nd April 1st
<b>Advertising information and rates are found on page 40 and 86</b>				

© 2001 The Rocky Mountain Llama and Alpaca Association. Reproduction of articles herein is authorized, subject to written permission being obtained from individual authors. Llama newsletter exchange editors may reproduce articles as desired so long as the author and RMLA are given credit for the original work. Exception: articles denoted with a © or "all rights reserved" must obtain approval from the author.

**NOTES:** the information in this *Journal* is not intended to be a substitute for qualified professional advice. Readers are encouraged to consult with their own veterinarian, accountant, or attorney regarding any questions concerning their animals or business operations. RMLA is not responsible for any losses resulting from readers' failure to heed this caution. The views expressed by the article writers herein are not necessarily those of the Rocky Mountain Llama and Alpaca Association, its' board, and/or its' members.

# TABLE OF CONTENTS

## A HUGE THANK YOU TO OUR ADVERTISERS! THEY MAKE IT HAPPEN!

RMLA Information	2		
President's Letter	6	Apishapa River Ranch Llamas	77
Minutes of the Board of Directors	8	Bear Track Farm	35
RMLA Committee Reports	12	Bitter Creek Llamas	25
Treasurer's Report	14	Black Butte Llama's	48
Youth Art Contest	15	Blue Line Design	42
In the Beginning	16	Brianna Livengood	80
A Meeting of Llama and Human Ways	20	Broken Windmill Ranch	Inside Back Cover
Newsflash: Children Choose Llamas	21	Cache La Poudre Minerals	30
Toss a Felted Hat into the Ring:	22	Caring for Llamas & Alpacas	38
Then and Now	26	Cloud Peak Llamas	41
Why Teach Your Llama to Pack...?	27	Deanna Lewellyn	31
Spring Veterinary Day	29	Double J Llamas	83
St. Patrick's Day Parade	32	Feathers & Friends Farm	37
Yes, a Three Legged Llamas	34	Foothills Llamas & Tall Tail Ranch	81
News From Around RMLA	36	Hance Ranch	55
Needle Felting	39	Indian Peaks Llamas	7
Back Country Hike	42	Kiowa Creek Llamas	28
Selection and Preparation for... Fleeces	43	Ladyhawk Llamas	50
Explanation ... to Evaluate a Fleece	44	Laramie County Fair	2
Fleece Judging Card	45	Ledgestone Llamas	79
RMLA Sponsored Events	46	Llamarage	1
What Did You Do Exciting...?	51	Llama Deara Ranch	21, 56
Jester	52	National Livestock Agency	29
RMLA Members Prove ... Adventurous...	53	Ollie Llamas	65
Salsa & Invierno Do Driving	56	Overland Trail Llamas	78
Library News	58	PaxKnits	68
A Trip to the Library ... Fun!	59	Pheasant Hill Farm	3
4H Llama Clubs and RMLA	60	Plum Valley Llamas	Back Cover
Strangers	61	RMLA Fiber Pool Clinic	42
Felting Clinic at Millers' - Great Fun!	62	Rock-n M Llamas	24
The Cheyenne Mini-Conference	66	Rocky Mountain Llamas	76, 84
Fairplay Llama Pack Race/Walk	68	Rolling Rock Ranch	61
New Members	73	Rosebud Press	85
Llamas and Kids in the Park	76	Sahalee Llamas	45
Christmas Llama Visit	78	Sanchez Creek Llamas	Inside Front Cover
A Note from New Members	80	Stillwater Minerals	23
The Crias & Critters 4H Llama Club	82	Tall Tail Ranch	18-19
		The Argentines	Centerfold
		Triple H Llamas Arizona	63
		Trout Creek Llamas	72
		Useful Farm Products	58
		Wheatfield Llamas	49
		Wild Apple Llamas	69
		Wyoming Show Circuit	71

**Cover Photo courtesy of Wes Mauz, Timberline Llamas. Photo was 1st Place winner at the 1999 National Western Stock Show photo contest. It was taken on the Continental Divide Trail southwest of Spring Creek Pass.**

## **PRESIDENT'S MESSAGE: RMLA TO THE FUTURE**

Happy Spring to all you wonderful RMLA Members. It's been a long winter this year and I know we are all ready for summer, fun and lots of llama fun events. There is a wonderful line up of all different types of llama activities for 2001. So get those llamas ready to have some fun!

The Board of Directors (BOD) has been very busy this past year, talking to lawyers and insurance people and running RMLA in a business-like manner. Liabilities have been a great concern pertaining to RMLA sponsored events. At times, it has been overwhelming for the BOD; but we have kept our noses to the grindstone. It has been very challenging and frustrating for us, but it has been quite the learning experience for the new and old BOD members as well. This has not been easy, but the current BOD is planning for the future of RMLA and future BODS. We want to ensure that RMLA will never lose its non-profit status and never allow the organization to be placed in any kind of jeopardy or liability. I am very proud to say this BOD is working for the over all improvement and future of RMLA. I will tell you all, as I tell the BOD members, "None of us are as good as all of us", and that means members as well.

I would personally like to thank all the Committee Chairs, Event Coordinators, and the people who volunteer to make these events happen. What you do for RMLA means *you* make a difference. Thanks, again, from the BOD.

Accomplishments of the present BOD and the entire RMLA organization for 2000 and 2001 to date are:

★ Membership dues changed to \$40 per year at the Annual Business Meeting.

★ RMLA helped support the largest ALSA Rocky Mountain Regional ever held. It was so much fun to see all the members working together for this event. RMLA needs to ensure it continues to provide this strong support to this event because it does reflect on us as an organization. A special thanks to Sandra Payne, who by the way is a RMLA member, for the wonderful job she did with the Regional and for giving me the opportunity to work with her.

★ Ensuring that all RMLA members are given the opportunity to cast their vote in the elections by successfully mailing out official election ballots to each member. See Rob Tompkins to assist in this task this year.

★ Educating our membership on the over all function of RMLA through the *Journal* and the RMLA.com website.

★ Establishing a Policy and Procedure manual, near completion, for future BODS to have in their decision-making process. Speak to Jill Knuckles about this.

★ The BOD has been meeting on a regular basis, supplementing meetings with conference calls and scheduled meetings with Committee Chairs.

★ Prepared a new revised Events Package, more streamlined and user friendly to meet insurance and legal standards. See Jerry Dunn to schedule events.

★ Liability Sign — identify the correct Statute language. Having proper signs made with the correct Colorado Revised Statute language and offer to the Colorado members for purchase. See the ad in this *Journal*.

★ Revision of the Bylaws by the proper committee to be presented and posted at the Annual 2001 Business Meeting. Read Robert Tompkins's article concerning this effort.

★ Our management of the liability



★ Mini-Conference in Cheyenne, What a wonderful event this was. Thanks Robert and Diane and Tompkins.

★ RMLA is sponsoring a Saturday night supper at the Western Slope Llama Classic, in Grand Junction.

★ *The Fence Post* is currently posting RMLA Events in each issue of its Ag Calendar.

★ E-Mail Communications to RMLA members thru Bob and Barb Hance. Thank you so much!

★ RMLA Events are increasing with more ALSA sanctioned shows and youth

shows. We are presently working toward sponsoring the Tri-State Fair Llama Show in Amarillo, Texas with Bev and Dan Johnston and this will be a first for RMLA.

★ The results of the RMLA questionnaires that were sent out to all members will be reviewed and summarized by Jill Knuckles and presented at the Annual Business meeting in October.

As you can see we have a lot things going for RMLA. Your BOD is working very hard, but having a lot of fun. I look forward to an exciting finish of this year as your President and thank so many of you for your support.

*Larry*

Larry can be reached at: [Fhllamas@aol.com](mailto:Fhllamas@aol.com)



## INDIAN PEAKS LLAMAS

SINCE 1980

Celebrating 21 years  
of Living with  
LLAMAS

Consulting and Promotional Services  
ALSA Certified Judge

Alaine Byers  
PO Box 1022 LaVeta, Colorado 81055  
719-742-6126  
[Allama202@aol.com](mailto:Allama202@aol.com)

## Minutes of the Board of Directors' Meetings

**MONDAY, JANUARY 22, 2001**

Conference Call at 7:00 pm

**Board Members Present** Larry Lewellyn, Robert Tompkins, Lougene Baird, Jerry Dunn, Jill Knuckles

**Secretary** The minutes were reviewed from the December 12, 2000 Board Meeting.

**Motion** to accept the minutes – Lougene Baird, 2<sup>nd</sup> Larry Lewellyn. Motion carried.

**Treasurer** Lougene read through the financial statement with an overall total of \$76,840.

### General Business

**Cheyenne Mini Conference** Following discussion in reference to the Mini Conference, the board has agreed that a small, one day gathering is the best idea at this time. The idea is to bring RMLA members and non-members together for some informative information, lunch, and a chance to meet the RMLA board and voice comments. The one day conference will be held Saturday, March 31 in Cheyenne.

**Bylaws** The bylaws committee will meet during the February 10 meeting to come up with a plan on updating and revising the bylaws. Robert Tompkins will head this committee. Volunteering for the committee have been Diane Tompkins, Teri Baird, Deanna Lewellyn, Rob Knuckles, Lougene Baird, Larry Lewellyn. The goal is to have the bylaws revised by the 2001 Annual Membership Meeting and submit for approval.

**Legal Liability Sign** Per our attorney, Mary Ewing, we need to update our signs to include all of and the exact wording as it reads in the statute. For purposes of production, the signs must contain the entire statute; the words shall appear on the sign in black letter, with each letter to be a minimum of one inch in height. The Llama Statute must be present.

The equine sign is not an acceptable substitute.

**Motion** - to destroy all of the sign the RMLA Bookstore has in inventory that do not comply with the above opinion – Lougene Baird. 2<sup>nd</sup> – Jerry Dunn. Motion carried.

**RMLA Questionnaire** Jill will mail out a Questionnaire to the membership by January 29 and have it returned by February 9 so we can review at the February 10 Board Meeting.

**Events Application** Several changes need to be made to the application. The following wording needs to be added to the "Application Form"- A statement that they must have the Legal Liability Sign posted at the event and all participants must sign the waiver. Failure to do this will result in loss of RMLA sponsorship and insurability. Jerry will update RMLA Events Packet and run a copy by Mary Ewing for suggestions and approval We will also make laminated Legal Liability Signs available to events coordinators.

**Motion** – RMLA will match funds up to \$200 for events advertising, providing that prior to the events, a copy of the proposed budget is submitted to the Events Chair for approval. Motion – Robert Tompkins, 2<sup>nd</sup> Larry Lewellyn, Motion carried.

**RMLA Dinner during Banana Belt & Western Slope Shows**

**Motion** - to sponsor a Saturday night dinner at the Banana Belt and Western Slope Llama Shows at a cost of \$5.00 per person. Motion – Jill Knuckles, 2<sup>nd</sup> – Robert Tompkins, motion carried.

Jill will work with Dottie LaRue to organize the event.

**Membership Renewal**

**Motion** - to change the membership year to April 1 through March 31 with the annual membership renewal being April 1. The last membership renewal was January 1, 2001 and the next membership renewal will be April 1, 2002 – Larry Lewellyn, 2<sup>nd</sup> Rob Tompkins, Motion carried.

**Membership Magnets**

**Motion** - to provide new RMLA Business

Card magnets to go out with all RMLA membership directories and an extra 100 for new members – Lougene Baird, 2<sup>nd</sup> Jerry Dunn, Motion carried.

Logo Design

**Motion** - to change the RMLA Logo so that the Llama and Alpaca are facing the mountain. The Llama will be placed closest to the mountain with the Alpaca behind the Llama. – Jerry Dunn, 2<sup>nd</sup> Jill Knuckles, Motion carried.

Art Contest Larry will submit an announcement in the May Journal for a Youth Art Contest. Larry will spell out specifics and the winners will be in the August Journal Issue.

**Motion** - to adjourn at approximately 9:15 pm – Larry Lewellyn, 2<sup>nd</sup> Lougene Baird, Motion carried.

**SATURDAY, FEBRUARY 10, 2001**

Denver, 10:00am

**Board Members Present** Larry Lewellyn, Robert Tompkins, Lougene Baird, Jerry Dunn, Jill Knuckles

**Committee Members Present** Journal Committee – Ron Baird (Editor), Carol Ann Evans, Terri Lynch, Bobra Goldsmith, Deanna Lewellyn

Bylaws Committee – Robert Tompkins (Chair), Diane Tompkins, Robert Knuckles, Lougene Baird, Larry Lewellyn and Jerry Dunn.

**Secretary** The minutes were reviewed from the January 22, 2001 Board Meeting.

**Motion** - to accept the minutes – Lougene Baird, 2<sup>nd</sup> Jerry Dunn. Motion carried.

**Treasurer** Lougene read through the financial statement with an overall total cash on hand of \$76,643. Lougene reported that she has transferred 10% of the Life Member Dues back into the General Fund. 10% of Annual Dues goes to the research fund, this amount was also transferred at year-end. The 2000 Consolidated Statement showed income at approximately \$58,869, expenses at approximately \$56,946 for a net profit of \$1,934.

General Operations	\$14,515
General Operations Liquid Asset	26,179
Life Members	6,500
Research	7,910
Publication Production Liquid Asset	18,039
CFL&A General Operations	3,500

**Total Cash as of February 10, 2001     \$76,643**

In past board meetings, we had discussed and motioned to purchase a Safety Deposit Box. Following additional discussion, we have decided that a box is not needed at this time and if needed in the future, will open for discussion at that time.

**Motion** - not to obtain a safety deposit box – Larry Lewellyn. 2<sup>nd</sup> Jill Knuckles. Motion carried.

Committee Reports

**Journal Committee** - Ron Baird as Editor of the Journal met with the Journal committee in the morning from 10:00 am – 12:00 noon. The Journal Committee included Deanna Lewellyn, CarolAnn Evans, Bobra Goldsmith, Terri Lynch and Jill Knuckles. A lot of good ideas came from the committee with each committee member taking a "Column Heading" to round up articles for each issue. Column Headings included a vet section, herd management, packing and hiking, shows, RMLA history, youth, health care... Ron suggested that the RMLA Logo would go across the top of every page. This will help to give RMLA recognition when articles are reprinted. There was also discussion about selling Journal subscriptions.

**Research** - Ron suggested that we continue with the Ohio State University Early Castration Study a.k.a. Long Bone Study, which will continue for 2 more years. The Morris Foundation supervises the study. There was a suggestion from the Board that we publish an update to the Long Bone study in the Journal.

**Bylaws** - The bylaws committee met from 10:00 am to 12:00 noon to start the revision. The committee included Robert Tompkins, Diane

Tompkins, Lougene Baird, Robert Knuckles, Larry Lewellyn and Jerry Dunn. The committee will continue with the revision of the bylaws section by section to be completed by August 1, 2001.

**Bookstore** - Sales of Caring for Llamas and Alpacas have been average for this time of year. Retail sales have been down and wholesale sales have been up. Lougene recommended that we advertise Caring For Llamas and Alpacas in regional publications to increase sales.

**Motion** - to fund advertising out of the CFL&A account up to \$500 to advertise Caring for Llamas and Alpacas in regional publications to promote sales - Lougene Baird. 2<sup>nd</sup> - Jerry Dunn. Motion Carried.

**Elections** - Robert Tompkins is the chair of the elections committee and has reported the following schedule. In the May issue of the RMLA Journal, he will submit a 'Tickler' about the upcoming elections. In the August issue of the RMLA Journal, he will ask for nominations. The ballots will be mailed out by September 1, 2001 and the results announced at the Annual Business Meeting tentatively scheduled in October.

**Events and Marketing** - Jerry reported that RMLA has added one more event to the Calendar for 2001, the Douglas County Summer Classic. She also reported that she would be shipping the RMLA Booth to the Four Corners show that will be held March 14 -17, 2001. Bob and Jo Riley also contacted RMLA to let us know that they will be sending two marketing videos for our use.

**Motion** - to approve all of the listed Fiber Events with the exception of the 2001 Grand Nationals, which we will hold for further discussion. - Lougene Baird. 2<sup>nd</sup> - Robert Tompkins. Motion Carried.

**4-H** - Alaine Byers reported that she has made several contacts: Steve Meyers, Youth / 4H at the Extension office at CSU. Also with the Director of the Huerfano Co. Extension office:

Joel Plath. She has received a ton of information and is in the process of putting it all together to supply general information for the RMLA Web Site and future information packets. She hopes to answer questions like: What is 4H; What a 4H Group is and what does a group do; What are the requirements for a 4H Club; Where does one go to get the appropriate forms, etc.

Eventually, she plans on compiling a list of phone number that can be called to locate your local county extension office and more. One additional facet is how well the Youth Judging Program that is affiliated with ALSA can be tied into 4H. Each Llama Project Club that completes the four standard requirements and six additional requirements is entitled to a seal for its charter. One of the additional requirements is: "members receiving instruction in judging and participate in judging products related to the projects taken."

Judy Graham from Pueblo has been a big help in gathering information about a Llama State Wide Project and she will stay in touch so we learn more as to what is involved. Alaine is also in the process of compiling a mailing list and hopefully email as well of all of the Llama 4H Clubs in the Rocky Mt. Region. One idea is to have a contact person from each state, since 4H is set up on a State Extension office basis, and then into counties.

**Youth** - Barb Harris reported that she has talked with a lot of kids and most of them have voiced a common feeling that "there is nothing geared toward them". When asking for suggestions, the new members have expressed an interest in coming to clinics that deal with performance and showmanship. The older youth have made suggestions such as a (1) camping trip during the summer, (2) a youth show that also has fun stuff such as a Movie Outing, Pizza Party, and other "Fun" stuff.

**Library** - The library has stayed on budget. It recently bought one new book on photography by Susan Ley. A suggestion was made that Sharon may want to use those who have volunteered as critics to write reviews for the Journal.

**Membership** - To date, 227 members have

renewed their membership for 2001. We have 17 Life Members and 24 Juniors. 148 members have not renewed their membership for 2001. The Hances will be mailing out a renewal packet to those who have not renewed. The membership committee spent \$670 in 2000 to cover expenses such as postage, copies, phone, Master Card and Visa expenses and office supplies.

**RMLA Gear** - Jill Knuckles and Larry Lewellyn will co-chair the RMLA Gear Committee. We currently have 29 Hats and 21 Shirts to sell. The cost of the Hats is \$13.50 and the Shirts are \$30. In the May edition of the Journal, we will place an order form for the RMLA Gear.

### **General Business**

*Cheyenne Mini Conference* Robert and Diane have confirmed the speakers and the facility for the mini conference. Robert is working on the mailing for registration, which he plans to get out by February 17. He will email those who have email and mail a postcard to members without email. Robert is also contacting ILR for labels to send out to non-members in the area.

*Questionnaire* As the questionnaires are being returned, Jill is keeping track of the information. It is suggested that the Board schedule a special meeting to go over the results and use the information to set goals and plans for the future. The board should also develop a response to the membership for the May Journal Edition.

*Bids on Liability Sign* Larry is collecting the information on the bids for the Liability Signs. We need to finalize this information and have an order form ready for the May Journal Issue.

*Insurance Coverage* Because of the diversity of RMLA events, the Board will to set up a meeting with the insurance company to get a better understanding of "What Is" and "What Is Not" covered by our insurance. Once we have this understanding, we will schedule a special board meeting to go over the Events Packet and have it ready to submit to Mary Ewing for final approval.

**Motion** - to adjourn meeting at 4:00 pm - Larry Lewellyn. 2<sup>nd</sup> - Jill Knuckles. Motion Carried.

### **THURSDAY, MARCH 22, 2001**

Conference Call at 7:00 pm

**Board Members Present** Larry Lewellyn, Robert Tompkins, Lougene Baird, Jerry Dunn and Jill Knuckles

**Secretary Report** The minutes were review and approved from the February 10 meeting.

**Motion** - to approve - Lougene Baird, 2<sup>nd</sup> - Jerry Dunn. Motion carried.

**Events Packet** - The events packet was reviewed and revised. The finalized version will be sent out to the board. One final review will be complete and then a motion to accept. Once approved, put Sponsored Events Planning Packet on the Web Site and include the Events Chair Email address.

### **Liability Signs**

**Motion** - Offer the following Liability Signs to the Colorado members: 12 x 18 single sided sign for \$35 plus tax and the Magnetic Sign for \$40 plus tax. The orders and accounting will go through the bookstore, a committee will mail out the sign. An order form will be put in the May Journal Issue and the Hances will be asked to put it on the Website. Need to state that the statute affect Colorado Members Only. The profits of the sign will go towards next year's liability insurance - Jill Knuckles, 2<sup>nd</sup> - Jerry, Motion carried.

**Wyoming Shows / Events Sponsorship** The Wyoming contingency is requesting matching funds for its ad campaign for the summer show - The events packet that went to the Wyoming group stated that we would match advertising funds up to \$200. The matching cost will be approximately \$80.

**Motion** - to match the cost of advertising as stated in the events packet in use at that time. The approximate cost will be \$80 - Robert Tompkins, 2<sup>nd</sup> - Larry Lewellyn, motion carried.

**Motion** - to adjourn - Larry Lewellyn, 2<sup>nd</sup> - Jill Knuckles. Motion carried.

Respectfully Submitted,

*Jill Knuckles, RMLA Secretary*

Jill can be reached at: Talltaillamas@bigplanet.com

## RMLA Committee Reports

### *Bylaws Committee Report*

**By: Robert Tompkins, Chair**

The bylaws committee consists of Chairman, Robert Tompkins, Larry Lewellyn, Jerry Dunn, Lougene Baird, Diane Walker Tompkins, and Robert Knuckles. The committee is working on proposed changes in the Bylaws for the membership to consider for approval at the annual business meeting on October 27, 2001. The annual business meeting will be held in the Denver metro area. The details of the exact location and other specifics will be included in the August issue of the Journal of the RMLA.

The committee is tasked with having its work done by August 1, 2001. It is our intent to keep the membership informed of our work as it progresses. To that end, we will include a list of proposed changes in the August issue of the Journal. Most of the changes are of a "housekeeping" nature and are designed to clarify language and to enhance efficiency in administering the association.

That said, we will preview in this issue of the Journal an example of one of our recommended substantive changes. In Article III entitled "Membership" Section 3.2 concerning "Membership Dues", it states "Dues shall be assessed for the purpose of paying for the annual operating costs of activities of the Association. The annual dues shall be established by the membership at the annual meeting or as provided in Section 3.7" Section 3.7 refers to the notice procedure for both annual and special meetings. Historically, RMLA dues have tracked with the fiscal year established in the Bylaws of January 1 through December 31 of a given year for membership in the subsequent year.

The Bylaws Committee is aware that the month of December is also the month in which ALSA and ILA membership renewals occur. Thus, the Bylaws Committee is proposing to the membership that we move RMLA membership renewals to April 1 of a given year. We are

aware of the opinion that by moving the renewal date, it eases the crunch of having multiple renewals in a month that is already impacted with additional expenses.

We welcome your input and comments to this process. Feel free to communicate any ideas or concerns to the committee. Or, you can refer ideas and comments to:

Robert Tompkins, Chairman  
RMLA Bylaws Committee  
8216 Stagecoach Road  
Cheyenne, WY 82009-9509

Telephone: 307.635.2168  
( telephone and fax )  
pwillamas@juno.com

### *Events Committee Report*

**By: Jerry Dunn, Chair**

Events are such a great way to market our animals and have fun doing it. The last several months, the Board has been working on upgrading the events packet that is mailed out to people who wish to organize an event. The intent was to make the information more useful and easier to understand for the event organizers. In turn, more fun and safer events for the participant.

Thanks to several RMLA members who expressed an interest in helping with events on their membership form. Volunteers play a tremendous role in this organization and help keep it functioning. Please check the calendar and take time to contact the event organizer of an event you are interested in and offer your help.

To date, we have 34 events on the RMLA calendar that are represented by shows for youth and adults, fun days, packing activities, training clinics, and conferences. To stay up to speed, check our website at [rmla.com](http://rmla.com) and take note of the calendar in the Journal. You can

read descriptive articles about each event in the Journal, written by the event organizer.

#### *Fiber Committee Report*

**By: Sharon Beacham and Karen Kinyon, Co-Chairs**

The main purpose of the Fiber Committee is to support the operation of the RMLA Fiber Co-op booth. This is a marketing outlet for all members who are shearing and using their llamas' fiber. It's becoming a model for other organizations to copy. We've shared lots of details with members of the South Central Llama Association in order to help them start the second fiber co-op booth in the United States.

Inventory ranges from raw fleece to roving, yarn, and finished garments. The booth also stocks llama-related books, note cards, jewelry, and decorative home accessories. Two years ago, the RMLA Board of Directors purchased a 6' x 12' trailer to transport and store the inventory and display items.

One of the reasons for the success of the Fiber Co-op booth is a group of about 10 dedicated volunteers. They haul the trailer to an event, set up displays, serve as staff, and then repack the trailer for the trip home. In exchange, they pay a lower consignment fee. They also have the opportunity to promote a marvelous fiber and the animals that produce it. We've probably answered every possible question about llamas, and their fiber, during the past 5 years!

The entire membership benefits from the operation of the booth. The 15% - 30% consignment fee collected on each item sold helps fund educational activities. We also stock Caring for Llamas and Alpacas and usually sell several copies at each event.

The 6th season for the RMLA Fiber Co-op booth is underway. Please contact the co-chairs for a consignor's packet of information and forms. New volunteers are always welcome.

#### *Membership Committee Report*

**By: Barb and Bob Hance, Co-Chairs**

Membership Report, March 31, 2001

Annual Membership = 258  
Compare to 2000  
2 member listing for 2001 = 440  
2 member listing for 2000 = 266  
133 memberships  
1 member listing for 2000 = 157  
Dollar totals for 2001 = \$10,320  
Dollar totals for 2000 = \$11,360

Since we changed to a single membership type, we have slightly less income than this time last year. Hopefully, by the end of the year this will level out.

Junior members:

There were 31 Junior members on this date in 2000, compared to 30 Junior members for 2001.

We have two more Life members this year.

#### *Research Committee Report*

**By: Ron Baird, Chair**

Once again, RMLA has funded the Early Castration Study being conducted through the Morris Animal Foundation at Ohio State University. The amount of funding this year was \$4,774. The study is about a year behind schedule, due to difficulties experienced early on in obtaining adequate numbers of llamas.

The research committee continues to believe this is a timely study, impacting the health and welfare of all llamas everywhere. Some breeders are castrating at weaning. Some evidence exists that early castration may lead to shortened lives, excessive height, and early degradation of ligaments in the lower limbs (dropped fetlocks). For the improved health of our entire Herd, we look forward to the results of this important, practical study. We believe it will aid in marketing llamas in the long term as an additional benefit to RMLA members.

## Treasurer's Report

**Each member should have the facts on the RMLA insurance — please read on so you will understand how insurance, events, and good times with llamas all relate.**

Events — doing things with our llamas — is just one of RMLA's strong suites. Because RMLA has liability insurance available for events, we offer a real benefit to the event, members, and general public who enjoy these many good times.

In 1992, RMLA spent less than \$1,000 for insurance. Our annual coverage paid this past February cost \$2,300. *Relate this to membership dues of \$40. The first 58 members who pay their dues — pay our insurance premium!* After that, we go on to other areas such as the Journal, Membership directory, Service Directory, Fiber Co-op, library, conference expenses — just to name a very few!

Obtaining insurance coverage has been a real challenge for this year's Board. On December 10th, we received a 60-day notice of cancellation — or non-renewal — by our insurance company. This strongly translated to no insurance, no events after February 10th!

Over the next two months, the Board and our agents worked diligently to secure coverage. Seven companies were asked to bid. Five refused to bid, and, 58 days later, two came through with competitive bids. *The increased cost was staggering.*

Basically, insurance underwriters just do not understand llamas. We have discovered it is the occasional "negative press" outside of RMLA events that the underwriters seem to remember, not the 1,000's of accident free hours within RMLA events. Hence, the reluctance to insure. Each time we have to insure with a new company, many hours are spent in educating underwriters about the low risk related to our llamas and how those risks relate to the thousands of hours of RMLA's 'accident-free' events.

*The really great news is: RMLA has never had a claim.*

The bad news from the agent and the insurance companies is that we can plan on a

premium increase again next February.

Your Board will continue to work with event organizers to keep events safe and 'claim free'. This goes beyond the board and the organizers, though. Keeping an event accident-free also lies in the hands of every person attending and participating in the event. *Safety is a must by all of us.*

The Board has spent a great deal of time reviewing our events package with the RMLA attorney as well as our insurance agent. The goal has been to bring the package up to the standards set by these professionals.

Those of you who have requested RMLA sponsorship for an event have received an event package. Those who received the old package will shortly be receiving the newly revised package. The new revised package takes a much more business-like approach relating to the responsibility of the event coordinator. While more business-like in nature, the package is also more user friendly.

*Please work with us to continue our accident-free record.*

By doing this, you can personally contribute to RMLA insurance premiums resting at the lowest possible price. This is the only way RMLA will be able to continue sponsorship of events and activities at no charge for liability insurance to the organizers.

Currently, organizers who are purchasing their own event liability insurance are paying upwards of \$350 per event for liability coverage. Take a look at the number of events listed in the Calendar of Events. RMLA is saving our event coordinators lots of cash by having this liability coverage available at no cost to the event.

And, events are a wonderful, fun way to enjoy the llamas we all enjoy and love!

*PS! You can ready the Treasurer's report in the Board minutes, starting on page 8. Should you have any questions regarding RMLA funds, please call. Thanks, Lougene.  
Lougene can be reached at:  
lougene@att.net*



**2001 RMLA YOUTH LLAMA ART CONTEST**

**CALLING ALL YOU KIDS!** Break out your pencils, crayons or paints. RMLA is sponsoring an art contest. All artwork will be displayed at the Annual Business Meeting and the members attending the meeting, October 27 -28, 2001, will select the contest winners in each age category. The winners of each category will receive a one-year RMLA membership and a Caring for Llamas book. Also, a spot in the winter RMLA Journal will be reserved for the printing the winner's names and their artwork. There will be a Special Prize for the youngest age group. All artwork must have the contestants name and age printed on the back.

- Special Age Group: 4 - 7
- Age Groups: 8-11
- 12-15
- 16-18

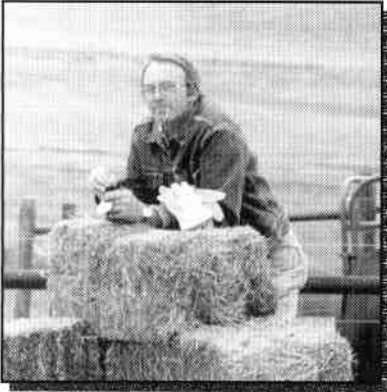
Please forward your entries by October 1st to: Jill Knuckles, RMLA Secretary  
Tall Tail Ranch  
2970 A1/2 Road  
Grand Junction, CO 81503-2312

Thank You,  
RMLA Board of Directors



## **IN THE BEGINNING-----**

**by Dan Schreiner,**  
a Past President of RMLA.  
Silver Sage Llamas  
Casper, WY.



**T**he Rocky Mountain Llama Association is entering its 20<sup>th</sup> year, and I was asked to share my recollections about what it was like "in the beginning". I feel it's only fitting to also pay

tribute to some of the many innovations and innovators that we now take for granted in our everyday llama lifestyles.

For us it started with my wife Ellen digesting a 1979 Smithsonian article featuring llamas and Richard and Kay Patterson. We were searching for a business that could afford us tax advantages, yet allow us flexibility to maintain our full time jobs. She felt llamas were unique and would mesh well with our severe Wyoming climate. We stopped at the Patterson ranch that summer, and the rest is history.

We were smitten by the llama bug, even at the unthinkable price of \$3,500 a pair. It seemed that there must be a quicker way than waiting out the Pattersons' year long waiting list, so we didn't commit but returned home and advertised in the Denver Post classifieds as wanting to buy llamas.

The ad was answered by Howard Kerstetter and Bobra Goldsmith and we arranged tours for that weekend. They both were gracious hosts and filled our heads with vital llama facts and Bobra pointed us in the direction of Stan Ebel for the next weekend. By this time, it was not if, but how soon we could find our first llamas. I wrote many letters searching for answers to our

questions, without the luxury of instant delivery by e-mail. We searched for more information but found little, so wrote more letters to our new found friends. Meanwhile, we would wait anxiously for our copy of the 4 to 6 page Llamas Newsletter published by Francie Greth-Petro. It had valuable information in each issue and, as I recall, the list of llama owners published there numbered about 35, then shot up to 50 that spring. Andy Tillman published his book *Speechless Brothers* and the Faiks of Alaska had a training book out, but that was about the extent of llama literature.

In the fall of '81, as I recall, an excited group of about 20 llama enthusiasts hailing from five states met to form the Rocky Mountain Llama Association for the purpose of sharing information about our wonderful llamas and educating the public about their attributes. We agreed to have an educational conference yearly and the exchange of ideas and methods there occupied the majority of our time and energy.

Many of us later informally agreed not to bow to political pressures from other llama associations and to maintain our focus on the llamas — where we felt it belonged. Other llama associations would grow to national importance, but we felt that we could support on an individual level the other organizations of our choice, yet maintain our commitment to RMLA as a regional organization.

RMLA was developing a nice collection of articles and books and Chris Switzer was to become the person who archived and arranged for sharing of this information as it evolved into the RMLA Library. This library is still said to be the single most complete source of llama information anywhere.

RMLA was the first llama association to support to llama research and as we strengthened ties with CSU, its projects were partially supported by our organization. We still knew very little scientifically about llamas, One of the first projects was Dr. LaRue Johnson's

nutrition study. Slowly but surely, the scientific community would unravel the mysteries of our llamas, but we literally had to start with the basics—what they ate! This hunger for information about the species prompted Clare Hoffman DVM, working with Ingrid Asmus, to author a book on basic llama care in 1988. Mary Mauz brought it to the RMLA Board's attention and we leaped at the chance to publish it, earmarking all RMLA profits from the book to llama research. Loans from llama breeders financed the book and now, in its 2nd Edition, 3rd printing, it has been accepted as a basic for every llama and alpaca owner.

In the early 80's, it was difficult to even find a vet to work on your llamas. Owners became very experienced in educating local vets to work with their animals and we would descend on them with information from the latest RMLA Conference. Sharing information became easier with the development of our RMLA newsletters and the transformation of the original Llamas Newsletter to Llamas Magazine. Three or four talented llama entrepreneurs surfaced nationally to market the newest in llama supplies and tack, and their advertising efforts helped disseminate information on llama health and treatment methods to new llama owners. Hundreds of new llama owners were first time large animal owners and starving for information on llama husbandry.

Everything from restraint chutes to packing gear has been successfully developed and marketed to llama owners, but RMLA has over the years consistently trained new owners in hands-on toe nail trimming, drawing blood, giving injections, and in shearing and grooming. Stan Ebel, Jim and LuAnne Hook, Bobra Goldsmith, and Howard Kerstetter were the pioneers of llama equipment for RMLA, western style.

Certainly a complete article on the

history of the development of llama equipment along with a Who's Who listing would make interesting reading. Howard Kerstetter also worked with Rocky Mountain Labs to develop a standard pregnancy progesterone test for llamas. Later, Dr. LaRue Johnson's neonatal seminars educated hundreds of our members on llama birthing and care.

We've come a long way in the last twenty years but the biggest strides have been made in educating the public about llamas. In the beginning, you could barely escape a fuel stop because of the crowds of people that were attracted to the llamas. Over the years, the comments from spectators have changed from "What are they good for?" to "I hear they're great for packing and chase coyotes too."

We've made great strides in llama education through our public appearances and events such as the National Western Stock Show, but, in spite of all our efforts, it seems to me that we've barely been able to scratch the surface to promote the best thing about owning llamas—the wonderful llama lifestyle. They're such easy keepers and impart such a sense of tranquility that it's tough to describe it. I think our bumper sticker says it best: *Llamas Light Up Your Life!*

It's been a great 20 years and it's not too late — the foundations of llama husbandry have been laid for you, in part by a lot of dedicated RMLA members — enjoy!

Dan can be reach at:  
[SilverSageLlamas.com](http://SilverSageLlamas.com)

*RMLA.com*  
*Click on Library.....*  
*If your dues are paid, you can*  
*check out a book through the*  
*website!*

## Top Notch Boys...



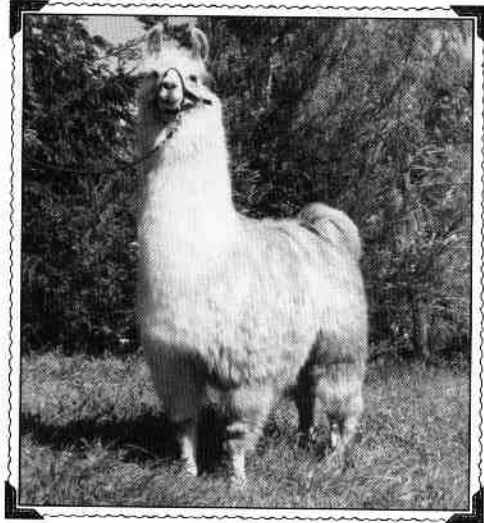
~~DDL Blaze~~

Very Handsom Top Flight Son throwing  
Champion Babies. Outstanding  
Conformation and Wonderful Fiber.



**Tall Tail Ranch**  
Breeders of Quality Llamas  
& Exotic Peafowl

Robert and Jill Knuckles  
2970 A 1/2 Road  
Grand Junction, CO 81503  
(970) 241 - 4112



~~Papa San~~

Incredible Papa Noel Son with  
Extraordinary Fiber and Beautiful  
Blond Reverse Appy Coloring.  
*Thank You Jan Day!!!*



~~Tall Tail's Calipso~~

Show Ring Proven Conformation topped  
off with Super Silky Suri Type Fiber.  
Grand Nationals Qualifier 1999 & 2000.

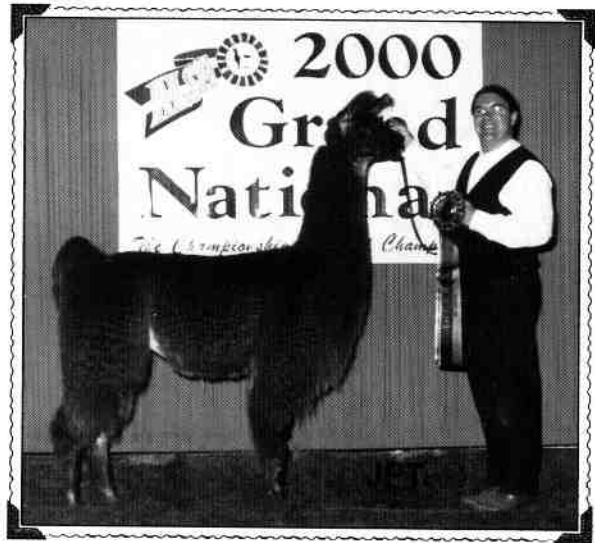
E-Mail: [talltailamas@bigplanet.com](mailto:talltailamas@bigplanet.com)



~~Feather RTC~~  
Grand Champion Medium Wool  
Female - 2000 Grand Nationals



~~Tall Tail's Jazz Jubilee~~  
Qualified for 2000 Grand Nationals,  
Medium Wool Yearling.



~~Bailarin De Fuego~~  
6th Place Heavy Wool 2 Year Old  
Female - 2000 Grand Nationals

**Think of the  
Possibilities...**

**Limited Breedings  
and Llamas for Sale.**

## **A MEETING OF LLAMA AND HUMAN WAYS**

**By: Hannah-Leigh Bull, Director and Psychotherapist at Llama Deara Ranch Medanales, NM.**



**A**s a young girl, I daydreamed about other peoples, llamas, the multicultural homestead, and the Noah's Ark concept of our all working together to keep afloat on this curious Planet Earth. As I got

older, I started to take the steps of making a multicultural and multi-species homestead a reality: I lived and traveled in other countries, learned other languages, participated in a multi-nation interspecies communication project, and trained in and practiced cross-cultural communication, assessment, and psychotherapy. Despite these practical experiences, I was hardly prepared for the magical moment of bringing a group of the local village children to Llama Deara Ranch to meet my llama family: April, Griffin, Taps, Princess, Nav, and Explorer.

Llama Deara Ranch is just south of Abiquiu in Medanales village, Northern New Mexico. Located on the Chama River, Medanales enjoys a long history of animal and food farming, with Spanish influence via Mexico starting four centuries ago, and the contribution of over two thousand years made by the Native tribes and Pueblo Indians, first in hunting and gathering and then in agriculture. Modern Northern New Mexico is multicultural, with a predominantly Hispanic population, many residents of the various Native tribes and pueblos, a minority of Anglo-Americans, and single women, in even fewer numbers.

Of the places I have visited and lived in mainland USA, Northern New Mexico, with its isolated, richly diverse communities and demanding physical environment, appears to be most like a foreign country, with Louisiana a close second. Even with my Spanish and Mexican ancestry, I have sometimes felt more like a visitor these past nine months since I moved to this culturally profound region, a single Anglo-American woman with six exotic llamas—eight times unusual.

In this context, how was the llama event seeded? It all started out with my invitations to a local Hispanic friend to come to the ranch and meet the llamas. She wanted to, but was reluctant to set a date. Then we got the children involved, and a llama field trip was born. What better way to connect the community than through the children and llamas, who are naturally curious about and accepting of new things?

On a fine sunny Saturday in February—the sun itself being another lyrical aspect of this wintry event, my friend and 10 of her nieces and nephews set out from her house one half mile down the country road from Llama Deara Ranch. As they ran, pranced, and strolled to the ranch, they picked up more kids and adults from the neighborhood, so that when they arrived, there were about 25 people—4 women, one male elder, and the rest children, one with his dog. The llamas seemed baffled by so many two-leggeds at one time, but rose to the occasion, the joy of their dancing equaled only by the laughter of the children.

I made some mistakes, of course, brought too many kids into the corral at a time, allowed the llamas to gorge on cob, and forgetting to take photos. These mistakes took on the proper perspective in light of the smiles and nods from the adults, and the expressions of the timid kids who put their hands full of grain up to the llamas' mouths only to have the gentle muzzles cautiously inhale the grain from their palms. Delight all around!

The kids stayed down with the llamas only

about an hour and headed back for cookies and juice in relays with the adults to the large rural kitchen in the 200-year old adobe casita where I live. More laughter, sharing, and being. The llamas went back to browsing and hay munching, amused, in the noble llama way, about what delights humans. Since then, I have basked in the laughter of the children that lingers to this day on the land, in the infectious joy of the llamas in their wild dances through the fields, in the extended trust and comfort among the adults of the various backgrounds and cultures.

This is one example of how intercultural and interspecies understanding can spread and become engrained in our hearts, souls, and bodies, one example of how a visitor can progress very much to belonging to a community and region. The memories of our connections, heart in hand or hoof, the joy we bring to other creatures, the boundaries we have kept, and the mutual respect we offer right in our own backyard—all this holds our understanding together, and our enchanting llamas are certainly in their domain on all counts.

*Hannah can be reached at:*

*hllbull@cybermesa.com*



## LLAMA DEARA RANCH

**Eco-partners and Interns** – Hannah-Leigh Bull of Llama Deara Ranch, in Abiquiu, New Mexico, seeks an eco-partner to create a sustainable living environment and develop a center where visitors can restore themselves and learn more about earth restoration and human healing. A beautiful two-room adobe apartment on the property is available to the potential eco-partner for \$650 rent.

Eco-partnership in Llama Deara Ranch entails joint rights and responsibilities, financial and otherwise, for the property and center.

She also seeks interns or students interested in llama husbandry and environmentally sound building and crop-production practices. Accommodations and compensation are negotiable.

For more information and the Llama Deara Ranch project statement, call 505-685-9416, fax 505-685-4197, or send email to [hllbull@cybermesa.com](mailto:hllbull@cybermesa.com).

### **NEWSFLASH: CHILDREN CHOOSE LLAMAS OVER CANDY**

The Grand Mesa Llama and Alpaca Club joined the numerous Lyons Club Clowns for the Grand Junction Lyons Club parade. The third Saturday afternoon in February proved to be a beautiful sunny day as we strolled down the Main Street in Grand Junction.

Six llamas and two alpacas dressed in a variety of "festive clown attire" came to represent the club. We were often guilty of holding up the parade because so many happy people wanted to pet the alpacas and llamas....

The llamas and alpacas were happy to oblige and often provided a kiss for the road. To our amazement, the children even passed up handfuls of candy being tossed their way to have the opportunity to "pet a alpaca or llama". Though "we humans" were not the "highlight", we were able to answer a variety of questions with a smile. Steve McKinely and his daughter, Jenna, brought two alpacas and the banner. Llama handlers were Jane Stout and her grandson, Jazz; Pat Lowe and a friend Jeanann; and Rob and Jill Knuckles. We would have to say that our camelids were definitely a highlight of the parade!! The newly formed club is looking forward to participating in many more community events.

## **TOSS A FELTED HAT INTO THE RING: SERVICE TO RMLA**

**By: Robert Tompkins,**  
RMLA President-Elect,  
Prairie Wind Llamas  
Cheyenne, Wyoming

You may have heard about political candidates "tossing their hat into the ring" by announcing their candidacy. We do so as well, but with felted hats. Our association is comprised of many talented people with diverse backgrounds. There is a lot of knowledge and experience in RMLA that lends itself to serving the membership. Three (3) Board of Director positions will be vacated later this year. These positions are: President-Elect, Vice President and Secretary. The current board has unanimously agreed to get this notice to the membership early for members to consider nominations.

**Let it be known far and wide, nominations are now open. Please submit your nominations by July 15, 2001 to Robert Tompkins, 8216 Stagecoach Road, Cheyenne, WY 82009-9509 or via E-mail to: [pwillamas@juno.com](mailto:pwillamas@juno.com)**

In the August 2001 *Journal of the RMLA*, we will list the nominees by board position. In September 2001, we will mail ballots to all RMLA members in good standing. The new RMLA board will be announced at our annual meeting, in October, 2001. I have enclosed descriptions of the three (3) board positions open for nominations. They are as follows:

### President - Elect:

The position of President-Elect is rooted in our bylaws. Pursuant to Article IV, Section 4.1 of the bylaws, the President-Elect serves as a member of the Executive Committee. In Article IV, Section 4.2 of the bylaws it states,

"The President-Elect shall hold office for one year and the following year assume the office of President."

These duties are reiterated in section 4.5.

As a member of the Executive Committee, the President-Elect attends all scheduled meetings for the conduct of RMLA business. The President-Elect serves as the liaison to the Elections Committee. And, the President-Elect typically is either the liaison or chairperson of the By-laws Committee.

The President-Elect in many respects serves an apprenticeship in the first year. The duties are intended to prepare the President-Elect for assuming the duties of President in the second year. As such, the President-Elect must develop a broad understanding of RMLA, its committees and its membership needs. This includes an understanding of legal, fiscal and policy issues.

As with other members of the Executive Committee, the President-elect is expected to contribute articles to the *Journal of the RMLA* and to work on projects and conferences consistent with the stated purpose of RMLA: "to educate the members and the public as to the breeding, raising, care and use of llamas and alpacas."

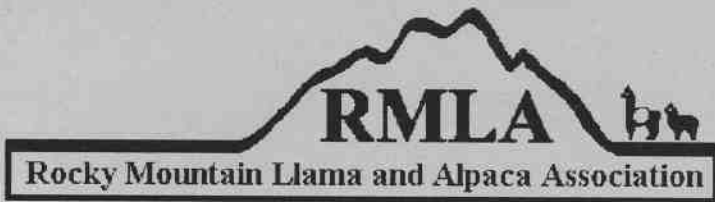
A natural outgrowth of the President-Elect's first year on the board should be the development of a vision for RMLA as President in the second year. This vision is shaped by input from the Executive Committee, functional committees and the membership of the Association.

### Vice President:

The Vice President serves on the RMLA Board of Directors and supports the goals and policies of RMLA. The term of Vice President is a one year elected term. In the absence of the President, the Vice President assumes the assigned duties prescribed by the office of President. In addition, the Vice President

*(Continued on page 24)*





**January thru December RMLA MEMBERSHIP**

JOIN RMLA now! Your dues will assure the continuation of all the good RMLA has accomplished.  
Consider joining as a **LIFE MEMBER**.

**Junior Membership:** \$10.00 per year (must be 18 years or under and have an adult member sponsor).  
Not entitled to vote, but eligible to receive scholarships, stipends and loans from the RMLA Youth Education Fund.  
**Youth Membership:** \$10.00 per year Former Junior members who have continued into higher education.  
**Annual Membership:** \$40.00 per year (Up to 2 people per membership: 1 vote per person.)  
**Life Membership:** \$500.00 one time only! Same as Annual, plus: **Special** recognition in Directory; and a one time free 1/4 page ad in the Journal. If there are future special assessments, "Life Members" would pay the same as annual members.

**Life memberships may be paid in 4 equal quarterly installments of \$125.00 each.**  
If you prefer, you may join or renew at <http://www.rmla.com> - click on Membership



Name \_\_\_\_\_

Name (2 or Jr. sponsor) \_\_\_\_\_

Ranch \_\_\_\_\_

Address \_\_\_\_\_

City \_\_\_\_\_ State \_\_\_\_\_ Zip \_\_\_\_\_

Phone \_\_\_\_\_ Fax \_\_\_\_\_

E-Mail \_\_\_\_\_ Home Page \_\_\_\_\_

# of Llamas owned: Females \_\_\_\_\_ Intact Males \_\_\_\_\_ Geldings \_\_\_\_\_

# of Alpacas owned: Females \_\_\_\_\_ Intact Males \_\_\_\_\_ Geldings \_\_\_\_\_

\_\_\_\_ Breeding(B)                      \_\_\_\_ Training (T)                      \_\_\_\_ Driving(DR)

\_\_\_\_ Sales(S)                              \_\_\_\_ Products(PR)                      \_\_\_\_ Boarding(BD)

\_\_\_\_ Wool(WL)                              \_\_\_\_ Research(RE)                      \_\_\_\_ Judging(JD)

\_\_\_\_ Packing(PK)                              \_\_\_\_ Leasing(LE)                      \_\_\_\_ Brokering(BK)

\_\_\_\_ Commercial Packing(COM PK)                      \_\_\_\_ Other(Specify) \_\_\_\_\_

\_\_\_\_ Life: \$500.00 \_\_\_\_\_

\_\_\_\_ Annual: \$40.00 \_\_\_\_\_

\_\_\_\_ Junior: \$10.00 \_\_\_\_\_

\_\_\_\_ Youth: \$10.00 \_\_\_\_\_

Total: . . . . . \$ \_\_\_\_\_

Visa/MasterCard EXP. Date \_\_\_\_\_

Acct. # \_\_\_\_\_

Signature \_\_\_\_\_

This charge will appear on your bill as:  
Rocky Mt. Llama

**Check if interested in working on these committees:**

\_\_\_\_ Finance      \_\_\_\_ Marketing      \_\_\_\_ Fiber      \_\_\_\_ Continuing Education

\_\_\_\_ Events      \_\_\_\_ Membership      \_\_\_\_ Nominations/Elections      \_\_\_\_ Research

\_\_\_\_ Publishing      \_\_\_\_ 4-H & Youth      \_\_\_\_ By-Laws      \_\_\_\_ Library

Mail this form with your check (payable to RMLA) or Credit Card information to:

**Bob & Barbara Hance**  
11818 West 52nd Avenue  
Wheat Ridge CO 80033-2032

Don't miss any of the events, sponsored by RMLA. **JOIN NOW!!!**

# Fairplay Pack/Walk Llama Race

Fairplay, CO  
 Saturday, July 28, 2001  
 Contact: Roger Miller – 719/749-0119

Join in the fun of the 19<sup>th</sup> running of this annual event, held in conjunction with Fairplay Burro Days! There will be activities for all ages and abilities.

- ❖ Llama Lunacy obstacle course and fun for the kids and public on Front Street after the races.
- ❖ If you can, bring extra llamas for “loaners” for other non-llama people to use (what a great way to get your llamas seen by the public).
- ❖ Camp (free-tents/campers) Friday and Saturday nights at the “Llama Camp.” For campers on Friday night at the Llama Camp, there will be a free Chili-Mac dinner - please bring side dishes and/or desserts.
- ❖ Check In will be Saturday morning, July 28, starting at 9:00 a.m. Race starts at 11:00 a.m.
- ❖ Stay around for the RMLA/LOCC Performance Show (sanctioned by ALSA) at the camp on Sunday, July 29, 2001, at 8:00 a.m.

## Make Checks payable to RMLA

**Mail registration and check to:** Roger Miller  
 P.O. Box 62996  
 Colorado Springs, CO 80962-2996

Registration includes a T-shirt; please specify size when registering.

FIRST NAME	LAST NAME	DIVISION (CIRCLE ONE)			GENDER (CIRCLE)	AGE	SHIRT SIZE (CIRCLE)
		PRO \$27	AMATEUR \$17	WALKER \$17			
		PRO \$27	AMATEUR \$17	WALKER \$17	MALE FEMALE		Small Medium Large X-Large
		PRO \$27	AMATEUR \$17	WALKER \$17	MALE FEMALE		Small Medium Large X-Large
		PRO \$27	AMATEUR \$17	WALKER \$17	MALE FEMALE		Small Medium Large X-Large
		PRO \$27	AMATEUR \$17	WALKER \$17	MALE FEMALE		Small Medium Large X-Large

### Contact Information – PLEASE PRINT CLEARLY

Name: \_\_\_\_\_  
 Address: \_\_\_\_\_  
 City: \_\_\_\_\_ State: \_\_\_\_\_  
 Zip: \_\_\_\_\_ Phone: \_\_\_\_\_

If you know of someone who is interested in volunteering to assist with: registration, timing, spotters, and Lunacy setup; please list their name and phone number. Volunteers will receive a T-shirt for their assistance!

<b>Office use only:</b>	
<b>Paid by:</b>	
Check	_____
Cash	_____

# Stillwater Minerals

Since 1989

**Vitamin & Mineral  
Supplements**

## Most Accepted Supplement

Stillwater Minerals is the first widely accepted quality vitamin and mineral supplement based on llama nutritional studies by Dr. LaRue Johnson at Colorado State University.

## Many Improvements

We continue to consult with Dr. Johnson on formula adjustments. In the past 5 years, we have added special ingredients to help preserve freshness . . . resist clumping . . . plus, we added more vitamins and minerals to combat stress, aid digestion and encourage wool growth.



Specifically Formulated  
for  
Llamas  
and  
Alpacas

*It Tastes Good Too!*

Most important, we even made it taste better. As Dr. Johnson said, "The best endorsement I can give is that my llamas sure eat more Stillwater Minerals Supplement than they ate of my stuff."

## The Finest Ingredients

The ingredients still include Zinpro 100® and Vitamin E, just like the original formula, plus 15 other custom ingredients. These additional ingredients add minerals and vitamins that are not found in any other Llama or Alpaca supplement.

**Bone-Meal Free  
Mad Cow Safe**

### Original Formula Lama-Min 101

Contains Vitamins A, D<sup>3</sup>, E and Minerals Calcium, Phosphorus, Potassium, Iron, Manganese, Cobalt, Iodine, Selenium and Zinc (Zinpro 100). All balanced for llamas and alpacas.

25 lbs: \$41.50 50 lbs: \$69.50

### Stress Formula Lama-Min 102

Same ingredients as 101 plus higher levels of all Vitamins and Selenium. Contains Electrolytes to promote water intake - ideal for summer use or other high stress situations.

10 lbs: \$23.95 25 lbs: \$47.50 50 lbs: \$79.50

### Zn Zinc Methionine Complex

Stillwater Minerals Zn is a chelated form of zinc that is less effected by competition for absorption from other minerals. Use only as directed by your veterinarian. Guaranteed analysis: Zinc (Zn) not less than 4.0% 5 lbs: \$19.95

### Premium Lama-Min 104

Same as 102 but with Calcium and Phosphorus balanced for alfalfa, plus the highest levels of Vitamins D<sup>3</sup>, and E. Contains DL-Methionine and B-PlexFive for wool quality and growth. Ideal for winter use or diet supplemented with grain.

10 lbs: \$25.95 25 lbs: \$51.50 50 lbs: \$85.50

**To Place Your Order or for More Information**



*Free delivery for Continental United States*

15170 West 303rd Street • Paola, KS 66071

**800•255•0357**

FAX: 800•648•2383 E-Mail: llama@llama.org



Order on the Internet and save \$\$\$ — [www.StillwaterMinerals.com](http://www.StillwaterMinerals.com)

(Continued from page 22)

serves as the RMLA Events Chair.

**Secretary:**

The position of RMLA Secretary is a two-year term with election years alternating with the RMLA Treasurer. Duties and responsibilities include, but are not limited to the following:

Send out meeting notices in a timely manner. Prior to each meeting, the Secretary will request from each board member a list of any agenda items. The agenda will be compiled and distributed to the board at least two days in advance for review to allow for any additions to the agenda.

Responsible for keeping accurate records of all Board Meeting notes and minutes. Once the board has approved the minutes, a copy of the minutes should be put into the "Minutes Manual" and a copy should be sent to the Journal Editor to be put in the next issue.

The Secretary is also responsible for recording accurate minutes of the Annual Membership meeting. The minutes from the Annual Membership Meeting will be posted and submitted for approval at the next scheduled Membership Meeting. Once approved, they will be submitted to the Journal Editor to be published in the next Journal Issue as well as a copy should be put into the "Minutes Manual."

Keep accurate and organized records of all correspondence between the board and membership.

Responsible for keeping the Master Copy of the Policy/Procedure Manual. All materials in the manual are to be kept up to date and approved as changes are made. Any changes to the materials will be promptly distributed to each board member

once approved. The Policy/Procedure Manual should include the following information:

- By-laws
- Board Position Descriptions
- Policies and Procedures of each committee
- General Policies and Procedures.

The Secretary will send cards when informed of a member's illness, loss of family member or other significant events.

As with other members of the Executive Committee, the Secretary is expected to contribute articles to the *RMLA Journal* and to work on projects and conferences consistent with the purpose of the Association: "to educate the members and the public as to the breeding, raising, care and use of llamas and alpacas." The Secretary will perform other duties as assigned or for which he/she volunteers for the betterment of RMLA.

**Remember, nominations are now open. Are you interested in serving RMLA? Do you know of someone qualified to serve RMLA? Let us know. This is your organization.**



**Patti Morgan**

October - April  
12120 282nd Rd.  
Arkansas City, KS 67005  
316-442-4996 fax: 316-442-1590

May - September  
PO Box 933  
Buena Vista, CO 81211  
719-836-4510

[www.rock-n-mllamas.com](http://www.rock-n-mllamas.com)

# Bitter Creek Llamas

## *Building a Legacy*

Bitter Creek Llamas chose to locate high in the Rockies, where the sun is bright, the nights are cool and alpine grasses grow in mineral rich soil. Ideal conditions that produce superior animals. After eleven years of commitment, breeding only select animals to enhance fiber and show presence, we feel we have earned the success we are now enjoying. We have never counted our achievements with show ribbons but rather with what our show winners later produce in our program. We are proud to offer, for the first time, some of our finest females, herdsires and stud service to influence others' programs.

*From showing to trail...*  
**I can do it all!**



Show Champions to Proven Packers

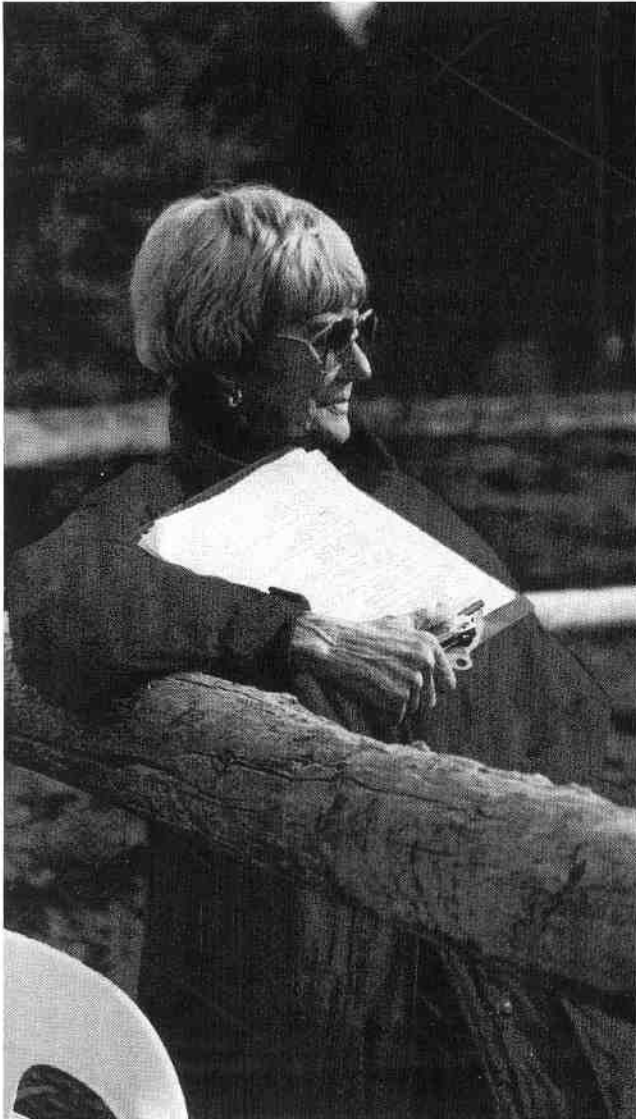
**Bitter Creek Llamas**

Kim & Dick Murphy

(719) 686-0444 • 1761 Teller County Road 5 • Divide, Colorado 80814  
Email: [bitcrcllamas@earthlink.net](mailto:bitcrcllamas@earthlink.net)

*Editor's Note: With the great historic files RMLA has in its Journal library, we find it interesting to look back and see what was in vogue or being thought of in years past. We are beginning a series of articles, people's thoughts ...*

## THEN AND NOW



**By: Virginia Christensen, Chair ALSA Judges' Committee.** Virginia and Dick own Kerry Lane Llamas in Gardnerville, NV. (This article was first published in the LANA News, December, 1987)

### Then ... 1987

Are we losing sight of what our priorities should be in llama breeding? So frequently we seem to be seeing animals being shown, winning top honors and then selling for very high prices, that have such evident congenital defects as extremely weak pasterns, dropped hocks, bad backs, etc. Only explanation seems to be a wool craze that is making a lot of us forget what we have here and leading potential llama buyers down the wrong path.

Far be it from me to advise or set standards for anyone in their breeding programs, but we do have two of the top llama veterinarians in the country stressing soundness and conformation way above any other consideration in breeding llamas. Their prime concern is for selective genetic breeding. Shouldn't that be our responsibility too?

If you've ever been involved in other animal industries, you've seen what trend setting can accomplish in the wrong direction. Let's not head the llama industry in that same misguided direction.

There is no doubt that wool is beautiful but do we have to sacrifice sound, healthy llamas to achieve it?

### Now ... 2001

Virginia was contacted for reprint permission. After much discussion, Virginia said she *might* change a few words, but that was all. Thanks, Virginia, you are a treasure to us all.

Virginia can be reach at:  
[kerrylane@attglobal.net](mailto:kerrylane@attglobal.net)

## WHY TEACH YOUR LLAMA TO PACK? BECAUSE IT'S THERE!

By: **Charlie Hackbarth**,  
 RMLA Past President,  
 Mt. Sopris Llamas Unltd.,  
 Carbondale, CO.



**S**andy and I have raised our children to the required age of eighteen. They are fully trained now and on their own. I have heard, however, that

your children always return, and when they do, there's more of them, and more training to do. In any case, as parents one of our goals was to teach our children to be the best that they could be, so they could live full, happy, and productive adult lives. It has been a tough job, but somebody had to do it, and since we couldn't afford to send them to a professional trainer we took on the responsibility ourselves.

From the beginning, Sandy seemed to have some natural aptitude for what lay ahead, but I didn't have a clue about training Alexa to the best that she could be. In the beginning, I tiptoed around, afraid to do anything, while I absorbed advice from all the Dr. Spocks who had suddenly descended upon me. However once I got into the flow of things and got my hands messy, so to speak, I quickly lost my tentativeness. Within weeks, I knew more than all the experts, including Sandy.

Over the years, this child-rearing process has taught me to be more organized, more creative, more patient, more consistent, and more persistent. I think we've done a good job of training our kids. Although I believe that good breeding did play a part in the end product, qualities such as intelligence, beauty and correct conformation are useless if the product doesn't work — unless of course the

product is a piece of art. Now the hard part is over, and we are enjoying watching the fruits of our labor as they do their duties as citizens of the world.

Sandy really deserves most of the credit for training the kids, but I picked up enough of her relentless training techniques that I was able to apply what I'd learned to training pack llamas. As a matter of fact, as I look back on my years of simultaneously training children and pack llamas, I can see that the behavior of the two beasts is basically the same, and the techniques I used to train them are interchangeable. I know some of you who have trained kids are probably saying, "If that's what it takes to train a llama to pack, I don't want anything to do with it!" Don't panic. You have to remember that during that period of time I trained hundreds of llamas and only two children!

A newborn llama will be on its feet nursing, as well as being dung-pile-trained, within hours. A newborn child, on the other hand, is usually smart enough to figure out where dinner is, but it takes her 18 months just to learn how to walk and another year beyond that before she will come close to hitting the dung pile.

With proper training, a young adult pack llama will have learned to carry practically anything you ask it to, up steep mountainsides or through a tricky obstacle course, without giving you any backtalk. My kids were 10 years old before they could even do the dishes, and I've often wondered if it weren't a mistake to teach them to talk. So you see, even though the process is the same, you are working with a different kind of intelligence, and the results of your training will come much quicker and easier with llamas.

Perhaps you are thinking, "Why should I teach my llamas to pack? I don't even like to hike." Let me say there are a lot of people who didn't enjoy hiking from their television set to the car before they owned llamas. They are now leading their llamas and themselves on the trail to happier, healthier lives. You don't have to live in the Alps, and you don't have to hike across the United States, to enjoy packing with your llamas.

If you are a llama breeder with packing experience, you have a marketing advantage that many breeders haven't realized. Your llama will be living a long life and, like children, they can grow up to be wild, spoiled brats or productive, useful members of their breed. Why not teach them to pack, since that's what they do best?

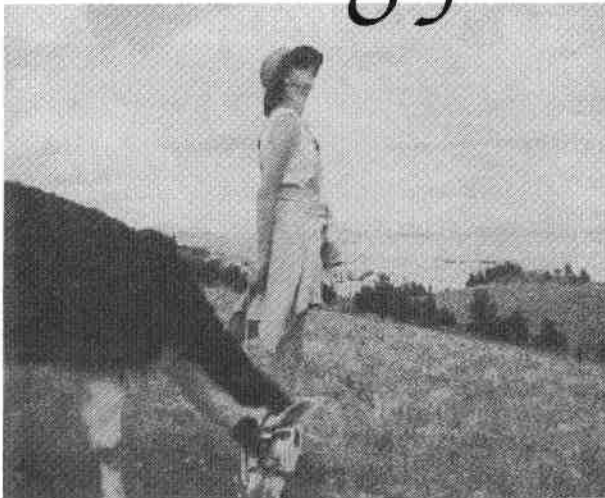
If you are a tentative person around you llamas and because of that you've been afraid to ask anything of them, you will learn a lot about yourself by teaching them to pack. My first pack llama, LLarry, was a work of art all right, but when he learned, among other things, that it wasn't acceptable to shoulder me off the trail when we were hiking cliffs, he became a functional work of art. Although he never was a masterpiece, both of us learned a lot from the experience, and the quality of our

lives was improved because of it.

You and your llamas will be challenged by a process that will make you think and act in ways you haven't before. As the teacher, you will have to stay a step ahead of your pupil, who doesn't understand what you are asking of him. You will at times be putting your patience, common sense, and creative powers to the test. You will make mistakes during training, but there is nothing that can't be undone. You will become more confident and less timid. You will begin to see what you and your llamas are capable of, and you'll not feel the need to baby them as much anymore. Your llamas will begin to be easier to handle, and working with them will be more enjoyable. In the end, you will see that training your llamas to pack is more than it seems.

Charlie can be reached at: [Soprisllamas.com](http://Soprisllamas.com)

## Looking for a llama?



Helping you  
find the  
perfect fit!

## Kiowa Creek Llamas

Bill, Jan, & Sherry Adamcyk

39420 Olson Court

303 - 621- 2960

Kiowa, CO 80117

[adamcyk@earthlink.net](mailto:adamcyk@earthlink.net)



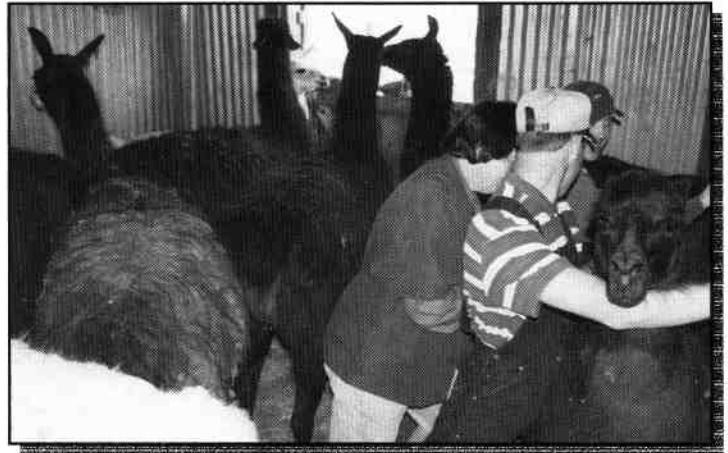
**SPRING VETERINARY DAY AT THE BEAR TRACK FARM**

By: Jerry Dunn, RMLA Vice President  
Bear Track Training Center  
Golden, CO



**E**arly each spring, we make an appointment with our vet, Dr. Debby Mayo, to give shots and worm all the llamas. The owners of the boarding llamas show up and volunteer to help

with the process. Nick and Lloyd Wamsley helped Doc with the vet work and the rest of the crew haltered the llamas and shuffled them



around to get their health work done.

*(Continued on page 30)*

*Same low rates...*

*Same secure company...*



**Protection for  
LLAMA-ALPACA**

**Full Mortality\*Limited Accident\*Transit\*Theft**

Call Brandon at

**1-800-692-4031**

**OR FAX INFO TO**

**1-806-372-3826**

**National Livestock Agency**

**PO Box 229**

**Amarillo, TX 79105**

*...insuring your livestock for 25  
years*

**ALL PURCHASES ARE AUTOMATICALLY COVERED  
IF YOU HAVE AN EXISTING POLICY!!**

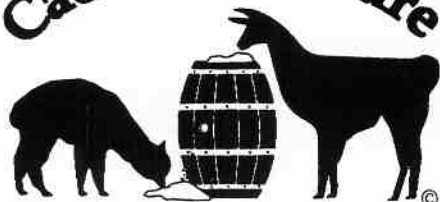
(Continued from page 29)

All the males were haltered ahead of time and lined up for the procedure. Bob Kucks weighed the llamas in along with a few of the humans just to make sure the scale was accurate. Needless to say, the llamas and the humans wintered well and the findings offered a challenge to get out on the trail to get rid of several pounds.

The majority of the males were put in the chute for inspection and shots. The chute offers a safer place of operation and protects our vet. Doc checked for fighting teeth, gave shots with vitamins, and CD/T on one shoulder and Nick gave worming injections on the other shoulder. Before Doc would do the worming, Joyce Kucks would read out the weight of each llama, to insure the correct dosage. The llamas who needed their toe nails trimmed were tied



## Cache La Poudre



### MINERALS

Call to Order  
or to receive a brochure  
**800-758-0825**  
303-646-5829

#### Supplement # 1

Diet consists of: Late or non-irrigated summer, fall or winter pasture; feeding grass hay. Contains a 2:1 calcium/phosphorus ratio and additional Vitamin E.

25 lbs, \$30      50 lbs, \$57

## Insure your Llama and Alpacas' Health for just Pennies per Day!

Cache La Poudre Minerals are free choice Vitamin and Mineral supplements formulated specifically to balance your llama and alpacas' diet.

- ◆ The supplements do not add unnecessary calories or protein to the animals' diet
- ◆ They are tailored to meet different feeding situations
- ◆ They are palatable so the animals will consume them willingly
- ◆ They are safer than pellets, which may cause them to choke

**On the web at: [www.CLPMinerals.com](http://www.CLPMinerals.com)**

Zinpro® 100 also available

#### Supplement # 2

Diet consists of: Late or non-irrigated summer, fall or winter pasture; feeding alfalfa or grass hay low in phosphorus. Contains additional phosphorus and Vitamin E.

25 lbs, \$30      50 lbs, \$57

#### Supplement # 3

Diet consists of: Spring or irrigated pastures; feeding alfalfa or grass hay low in phosphorus. Contains additional phosphorus and recommended basic level of Vitamin E.

25 lbs, \$25      50 lbs, \$47

*Prices do not include shipping*

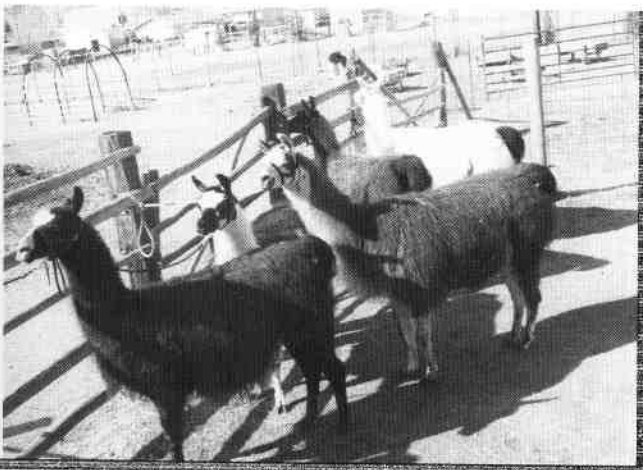
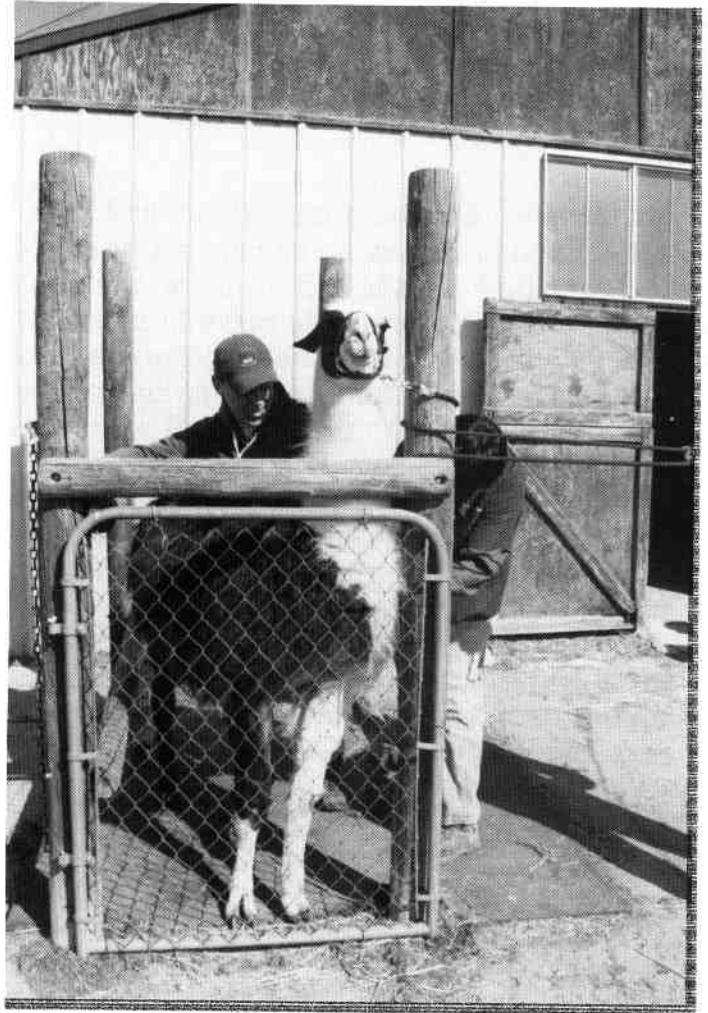
off to the side and taken care of after Doc finished her work.

To save haltering each one of the ladies, we herded them into a 12' X 12' box stall that became the "powder room". Having so many brown llamas can be confusing, even to the most careful observer, so Joyce checked each one off the list as Lloyd called out the names. Doc was also in the stall with a pocketful of syringes and waited for Nick and Lloyd to contain a female against the wall to receive her shots. All nine ladies were most cooperative, in the general sense of the word. The "powder room" technique, although it be a bit dusty, seems to be less stressful and requires less time.

Debbie Rothwell learned how to trim her llama's toe nails in the chute for the time. Lloyd and I trimmed toe nails of additional llamas and turned them out to the pasture.

We were finished with 28 llamas and three dogs in a little over an hour.

Job well done!



Jerry can be reached at:  
[beartrak@gte.net](mailto:beartrak@gte.net)

*Will create your ranch ad in  
 color and grayscale.  
 High quality ad suitable for  
 publications, brochures or sales  
 flyers.*

**\$50—\$150**  
*Depending upon time, colors, de-  
 tail, layout.*

*Interested? Contact Deanna Le-  
 wellyn at 303-979-4815 or  
[fhllamas@aol.com](mailto:fhllamas@aol.com)*

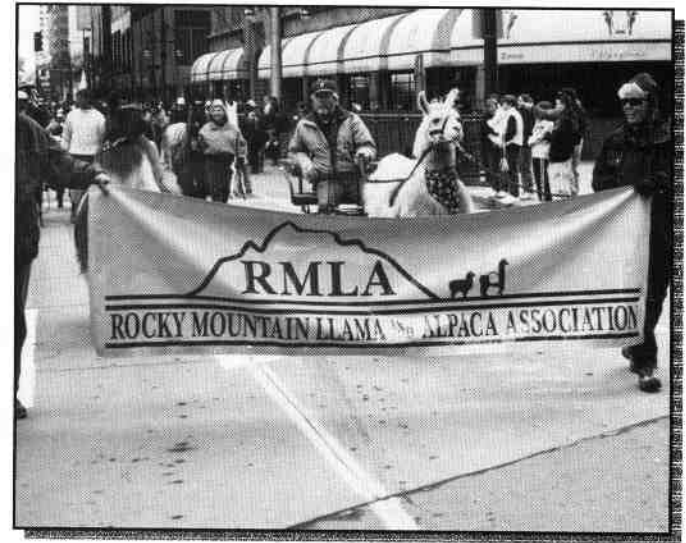
## ST. PATRICK'S DAY PARADE FUN AGAIN IN 2001

By Jim Haas,  
Soda Creek Llamas,  
Evergreen, CO.

Thanks to some great llama and alpaca people and their llamas and alpacas for making this the best parade yet! Too bad the weather was cold and damp, but that didn't stop the llama people from having fun — and you should see Jerry Dunn dance — she's great.

Also, the RMLA got interviewed on WB2 TV. Thanks, Larry Lewellyn for a job well done. Congratulations to all who helped make it a success.

P.S. Jerry, a special thank you for your thoughtfulness in giving me a llama cart ride. It does the HEART good..





## RMLA IN THE ST. PATTY'S DAY PARADE

*By: Larry Lewellyn, RMLA President  
Foothills Llamas,  
Littleton, CO*

On March 17th, several RMLA members gathered for the annual parade in downtown Denver to show off their llamas and educate the public. The weather started out cool, but what a great day it turned out to be! All the llamas and alpacas were exceptional, and except for the excitement/interest that occurs when the animals first meet one another, they all behaved wonderfully! As we walked, you could hear people say how beautiful the llamas and alpacas were, and the animals treated those intrigued parade goers with a few touches of fine wool and a few llama kisses. I was surprised to be interviewed by one of the parade announcers from Channel 2. I thought he was going to talk about RMLA, but he didn't. He was interested in llamas versus horses on the trail. Oh well, no big deal, I handed Rambutan to him and he started walking toward the camera and talking. It was fun and exciting and the tape of the parade shows almost every one of us. What a great way to promote our animals!



Here's a few photos of this year's participants and their special animals. I encourage you all to participate next year. You're missing some darn good fun with good people and their llamas!

## YES, A THREE LEGGED LLAMA!

By Michael Shealy,  
Touch the Earth Llamas,  
Black Forest, CO.



**Marlice** and I had gone for a load of hay on an autumn afternoon, a little over two years ago. When we returned and made the evening rounds to feed, we saw Viejito

limping. We called him Viejito (little old man) because he had a white "beard" on a brown bay. He was 14 months old at the time, a normal yearling in with six other males around his age.

We called our vet and he came the next morning and took an x-ray of the joint. It was immediately apparent that our vet couldn't handle the necessary surgery and so forth, so I took Viejito to see the CSU staff. The break was right through the stifle joint, tearing the joint apart and off the end of the femur bone.

After more x-rays and several consultations, it came down to 1.) a 5% chance of success in repairing the joint and excruciating results if failing with another break 95% certain, 2.) amputation, or 3.) euthanasia. I called Marlice and we decided on the amputation. The operation was a success, as far as that goes, and Viejito came home with me two weeks later. He'd been on scheduled morphine injections for the pain and we couldn't handle that at home. The bandage was very well executed and the incisions and stitches healed nicely.

I wish it had been that easy, but it wasn't. When we got him home, I set up a small corral panel pen for Viejito to spend a few days in, while I was able to make a

larger, but still private pen. During this first week after returning home, he took a dramatic turn for the worse. From being able to hop around without pain, to obvious pain and inability to hold with his rear leg, thus sagging way down in the rear every time he wanted to move. He could kush and stand without any problem, but as soon as he wanted to go forward, he sagged and his rear leg folded up.

A call to the vet brought him and, after palpating, the vet took an x-ray (the next day) and found a broken pelvis. Apparently, Viejito had taken a "leap" as they are wont to do when frightened and in a kush position, and the torsional stress exerted from the single-legged leap broke the pelvis bone on the good leg. We think the neighbor's dogs at the fence barked him into useless flight. There was nothing the vet could do about the pelvis. Any operation would disable the only rear leg he had left. So, it was suffer through or die. We withheld judgment for a while. Marlice praying for a miracle, me hoping it came soon. Three months went by. Viejito is still in pain and still sagging with the rear leg folding whenever he wants to go forward. I'm caving in. I start voting for euthanasia. Marlice holds tight for a miracle — and we disagree as to how long this should take. We fight. This is the tough part for us, but the whole thing was tough for Viejo (which is what we call him now — old man).

Well, six months after that first week, he had a change of mind. A miracle. He realized somehow that his erect stance, head held (llama) high ... strutting, was not efficient for walking in his situation. His previous pacer's stride was no longer efficient, either. His brain made the adjustments. He started walking with his head held low. He also started swinging his stump in rhythm with his left rear and switched his stride to opposite, like a horse walks. In other words, his left rear syncs with his right front. Llamas pace — have you noticed this about your llamas? This means they walk with both feet on the left side, then both feet on the right side.

Not long after this, Viejo was doing something you won't see any other (but 3/4) llamas do! Occasionally, he'll "wheel" his head around low, pivoting on his front two legs, picking up his rear end and turning 180° without touching (it) down. One thing fortunate for him, Viejo turned out to be quite a small male, hardly growing at all after the operation. I think it had something to do with the trauma that he was going through during some of his main periods of growth, because none of his brothers or sisters have been this small.

He now resides as the (gelding) "herd sire" with the girls and babies. He prunks, jumps, bucks, runs wildly with the rest of "his" herd. It's a miracle every time I see this. He always eats last, is *\*never\** on top, and spends much time "looking-out". The celibate sire's life isn't that bad though, considering the alternatives.

Sometimes those miracles take a while, but when they come, it's nice.

*Mike can be reached at:  
touchtheEarth2@yahoo.com*

### **Livestock Handler Safety**

(Condensed from CSU Bulletin 1.813, authors are M. Legault, A. Swinker, and T. Grandin)

1. More people get killed by horses in Colorado than any other species of livestock. Over the past 10 years, Colorado reported 19 deaths due to horses, 4 due to cattle and 1 due to sheep.
2. For every death, there are about 100 to 400 disabling injuries reported.
3. Understanding livestock behavior will ease handling, reduce animal stress and improve handler safety and animal welfare.
4. Avoid isolation of individual animals.

*Continued elsewhere in the Journal*

## **BEAR TRACK FARM LLAMA TRAINING CENTER**

**JERRY DUNN**  
**14550 W. 50TH AVENUE**  
**GOLDEN, COLORADO 80403-1707**

### **CLINICS AVAILABLE PRIVATE OR GROUP LESSONS CART DRIVING**



### **EXCELLENT.FUN. TRAINING FACILITIES**



**e-mail: [beartrak@gte.net](mailto:beartrak@gte.net)**  
**home page: [www.rmla.com/dunn](http://www.rmla.com/dunn)**

## NEWS FROM AROUND RMLA

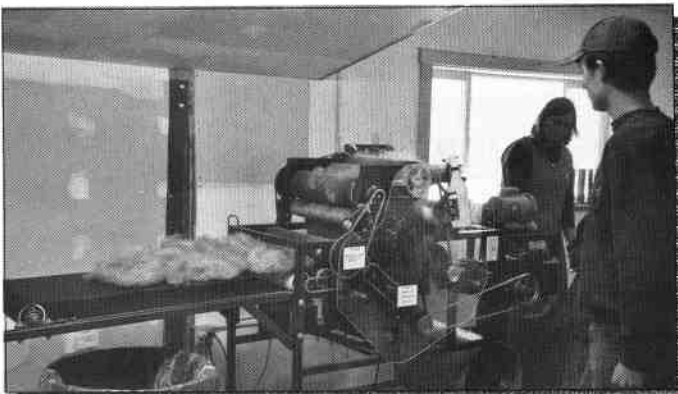
*EDITOR'S NOTE: We appreciate the opportunity to share the activities of llama groups associated with RMLA. Please submit your articles directly to the editor.*

### GRAND MESA LLAMA & ALPACA CLUB

By Linn Jackson,  
Linn's Llama Lland  
Grand Junction, CO

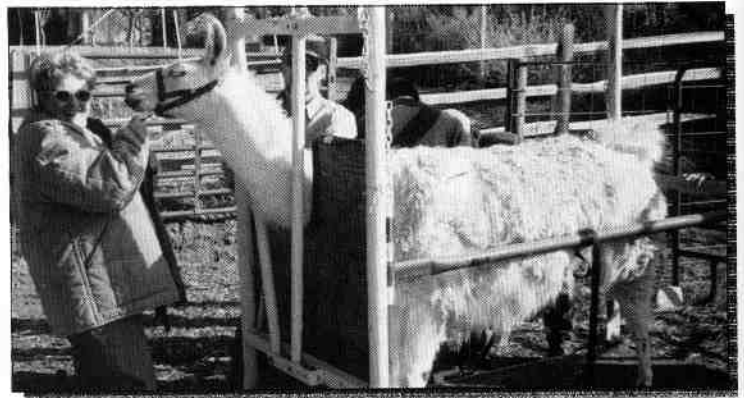
We have had a busy three months with our fledging group, the "Grand Mesa Llama & Alpaca Club", located on the beautiful western slope of Colorado in Grand Junction. At our January meeting and "munch-in", we talked about the activities we all wanted to do together. Some have been done, others coming in the future.

The first was a visit to a new wool processing mill in Molina, Colorado, near Colbran. This new mill is owned and operated



by Penny and Erik Lloyd, the nephew of Dee Stoddard. They personally moved all of their equipment from Nova Scotia and Maine, with four English angora rabbits as helpers. Our visit was a great day and the mill is impressive. It can process raw wool into rovings or even spun yard at reasonable prices. The e-mail address is: Sheep Camp Mill@aol.com and their telephone is 970.487.3295. This mill is located 16 miles from the I-70 Powderhorn turnoff in DeBeque Canyon near Grand Junction.

Our next venture was a herd health day. We had 7 members bring 12 llamas for checkups, toe trimmings, teeth checks, vaccinations, and wormings. An obstacle course was also set up that day with a bridge, straw bales, jumps, plastic sheeting, and trails for show practice. This event was hosted by Linn Jackson. It was really a fun day and the vet, Dr. Jim Harrington of Footprints Animal



Clinic, and his tech PJ, did the duties that day.

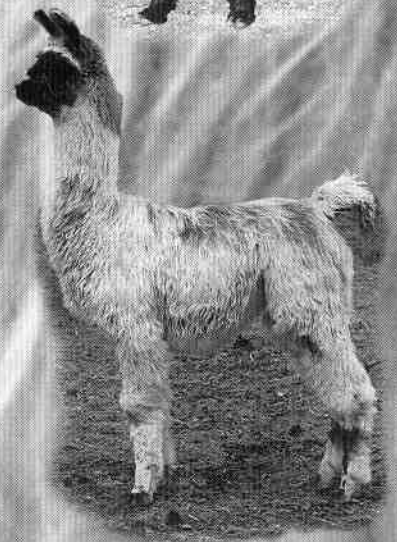
On April 21st in downtown Grand Junction, there will be the 18th Annual Southwest Fest. It's a great community interactive day where we get to walk around on Main Street with our llamas and alpacas, amidst all the festivities. We have our goal set on winning the "Showmanship Award" for best booth presentation. We are going to put on an obstacle demonstration right on Main Street! We'll let you know how it goes!

The great Banana Belt Llama and Western Slope Llama classics are on April 28th and 29th here in Grand Junction. Participation by all our club members in preparing for this event has been superb. Their efforts have included writing and developing the public service announcements for radio, TV, newspapers, and periodicals, as well as the Colorado website, [www.colorado.com](http://www.colorado.com), and the Grand Junction website, [grandjunction.com](http://grandjunction.com). Our members obtained the lunch food vendor, developed the emergency information sheets, and helped round up special volunteers and runners needed at the various show sites. We

*(Continued on page 39)*



# *Fabulous Fiber on Superb Llamas*



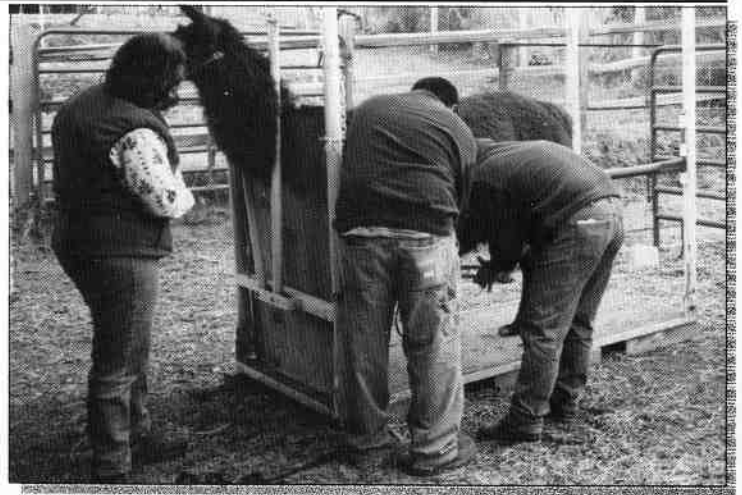
Post Office Box 698 • Divide, Colorado 80814  
Phone: (719) 687-2169 • Fax: (719) 687-5365  
www.feathers-friends.com • Email: fff@pcisys.net

(Continued from page 37)

also secured the veterinarians, and placed the posters advertising the show in different local businesses. One member is doing the Family Story Hour at our own Mesa County Public Library. The story, of course, is "Is Your Mama A Llama?" with the bonus attraction of having a baby llama for the youngsters to touch and pet!

It's been a fun three months. We look forward to welcoming new members and participants for our varied activities. We hope to have a picnic/day hike soon, a herd health day, an obstacle training day, a grooming/shearing day, and even a show training day. We all have a fun time together and enjoy one another's company. Treats are always yummy, the chatter and laughter abundant.

Please come to any and all of these events, the more the merrier! We ask that you please belong to the Rocky Mountain Llama and



Alpaca Association first and foremost ... and then ... if you have some extra money, you can join our little club. We will welcome you with goodies and laughter ... member or not ... what could be better!

For more information about our club, please call or e-mail *Linn Jackson* at 970.245.3833 or *InslamaInd@aol.com*

# Caring for Llamas and Alpacas

A world renowned RMLA publication. Orders shipped around the planet... (and elsewhere!)

To Order:

<http://www.rmla.com>

or

Send your name, address, city, state and zip and

\$23.95 plus \$4.00 S & H

(CO residents add 3% sales tax) to:

Keith & Katy Wegner

RMLA Bookstore

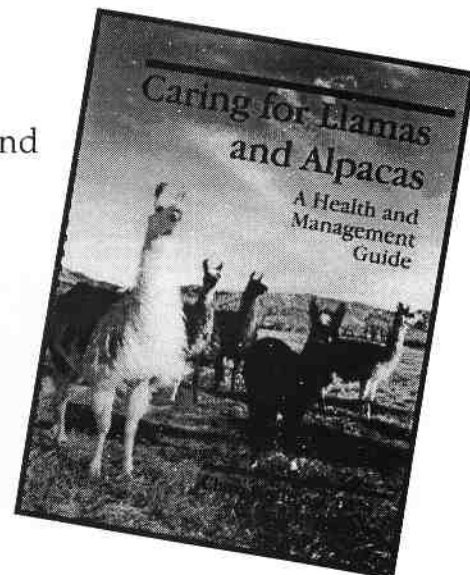
17190 W. 57th Place

Golden, CO 80403-1113

(303)273-9445

e-mail: [k2wegne@attglobal.net](mailto:k2wegne@attglobal.net)

ISBN:0-9622768-2-0



## NEEDLE FELTING

**By:** Carolann Evans  
 Ladyhawk Llamas  
 Berthoud, CO

A snowy March 10<sup>th</sup> turned into a fun day for 7 of us who had signed up for a needle felting class. The class was held at Cheri Paxson's studio in Longmont, Colorado, a large converted garage filled with artwork and comfy chairs and couches.

We assembled at 9 am, eager to learn something new. I, for one, had no idea what to



expect. I had heard lots of people say that needle felting was fun, but really didn't know what it was all about. I went because I have never mastered knitting, let alone the process of preparing the fiber first (all that combing, carding, spinning is over my head). I felt bad about wasting fiber every year and wanted to put at least some of it to good use.

I needed something relatively easy, and as my "fun" time is limited, needed something that would give me some measure of immediate gratification, by providing me with a finished product in a few short hours.

The basic idea behind felting with a needle is that the fiber is entangled and interwoven in a felt-like manner by continually poking it with a barbed needle. Don't ask me to tell you exactly HOW this happens...it just does...and it is amazing....and fun....and kind of silly! But more

on that later!

Any type of wool may be used. We were using llama and alpaca. It is best to use washed fiber....but I used wool that I had brushed right off my llama. I had picked out the big pieces of hay and stuff, but there was still a substantial amount of weed seeds, etc. in it. Most folks used clean stuff, but I wanted to make something out of MY llama and hadn't had the time to clean it (or the knowledge of just how one does that once it's off the llama.)

We were all given a book, and 4 needles. And a LARGE block of foam. The foam is placed in your lap or on a table and you poke/felt on top of it. It prevents poking *yourself* or breaking needles on the table. It is important to PAY ATTENTION to what you are doing. This is not an activity to engage in while watching TV! The felting needle is the tool used in this process. It is a barbed needle, made from highly tempered steel that is *extremely* sharp. When not in use, it lives in its own sheath for protection. It is recommended that anyone using such a tool make sure their tetanus shots are up to date!

Sounds dangerous, doesn't it?!? Just keep Band-Aids handy. Sharon brought some with her, but only one was used. Not bad with 8 first-timers!



Our first project was to make a "needle holder." Basically, it is a small ball of fiber that is made to hold that wicked needle so you don't lose track of it while you are working. They

*(Continued on page 40)*

(Continued from page 39)

would be easy to misplace if laid on a table, and you wouldn't want to find it "the hard way!"

What's fun about this is that you really *can't* make a mistake. Our second project was to make a "creature" of our choice, using basic beginner techniques that can apply to *any* "creature." Sharon said, "sometimes your fiber will tell *you* what it wants to be." Hmmmm. What could that mean? I'd soon find out! Sharon said she was going to make a mouse. Ok. I could do that. How hard



could it be to make a mouse?!? Long tail, big ears, pointy nose...no problem. Turns out, my fiber didn't want to be a mouse. It became quite apparent that my fiber wanted to be..... a beaver?!?! Where did that come from?!? I don't think I've ever even seen a beaver in real life!!! But yes....my little fiber creature was looking more and more like a beaver.

And Sharon's still looked like a mouse. Go figure. Someone made a dog...someone made a dolphin....someone else made a llama! In the afternoon, for our third project, we ALL made llamas or alpacas and learned how to make them with a pipe cleaner core so that they also have bendable legs. It was great fun, especially to see the different types of llamas created! We had heavy wool ones, a cria, and a light wool packer. I made mine to look like the one whose fiber I was using.

The possibilities are endless. We were making 3-dimensional figures, but it is also possible to make "flat" items for pins...or use a pattern to make pieces that would get sewn together later and stuffed.

I can't wait to get shearing this year!

Cheri Paxton has several classes scheduled throughout the year. Call at 303/777-4370 or email [paxKnits@yahoo.com](mailto:paxKnits@yahoo.com) for further information on dates/times.

## Important Information for Advertisers

Rates on page 86 are for "Camera-ready" artwork or negatives --the ad requires no further work.

Adding or reducing a photograph or resizing an ad incurs an additional charge from the printer.

We are not set up to do artwork.

Please use the following information regarding ad sizes in preparing your ads.

	Width X Height
<b>Full page</b>	<b>7.5" x 9.25"</b>
<b>Inside covers</b>	<b>7.5" x 9.25"</b>
<b>1/2 page</b>	
<b>horizontal</b>	<b>7.5" x 4.5"</b>
<b>vertical</b>	<b>3.5" x 9.25"</b>
<b>1/3rd page</b>	
<b>horizontal</b>	<b>7.5" x 2.5"</b>
<b>Standard Business card</b>	<b>2.25" x 3.5"</b>

**Thank You!**

**WOW!!**  
**We had a "Grand Time" at Nationals**



***Cloud Peaks Top Banana***

- National Grand Champion LW Male

***Cloud Peaks Cecila*** (owned with Marty & Kathy Finch)

- National Grand Champion LW Female

***Cloud Peaks Cecila and Halley Coffman***

- National Grand Champion Intermediate Performance

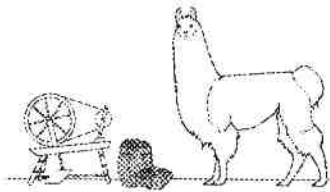
***Cloud Peaks Ice Princess*** (owned by Marci & Simon Zadina)

- Reserve National Grand Champion Performance

4 National Champions, 1 Reserve and 16 Top 10 Placings with Llamas from:

**CLOUD PEAK LLAMAS**  
Box 541 Story, Wyoming 82842  
(307) 683-2548

ROCKY MOUNTAIN LAMA  
FIBER POOL



**SPRING FIBER CLINICS**

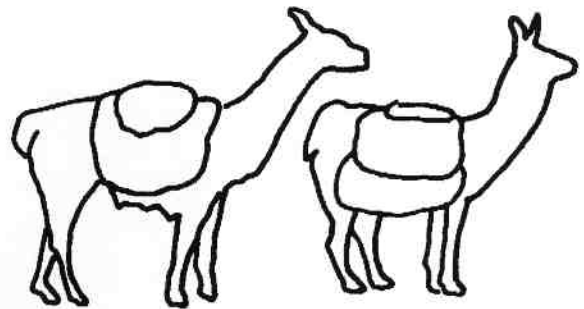
- Saturday, May 5, Fort Collins, CO
- Sunday, May 20, Boulder, CO

Shearing, Grading & Fiber Preparation  
for Show or Processing  
Demonstrations, Discussion, Lunch,  
& Lots of Hands-on Experience

Please contact us for details & to  
make reservations. \$25/person

Sharon Beacham                      Karen Kinyon  
Boulder, 303/666/9437 • Ft. Collins, 970/484/6241  
beachams@phf-llamas.com • kkd@oneimage.com

ALSA Certified Llama Fiber Judges



**BACK COUNTRY HIKE TO  
GIBSON LAKE**

*By: Larry Lewellyn, RMLA president  
Foothills Llamas  
Littleton, CO.*

**H**ere is a pretty good hike to get your animals in condition for summer packing or a hike — and it's a fun hike too! You head south on Hwy 285, to Webster. Webster is three (3) miles south of Grant on Hwy 285. At Webster, you turn north and drive seven (7) miles northwest on Hall Valley Road (FR 120) to Gibson Lake trailhead at Gibson Lake Picnic Ground. The road up to the trailhead is a bit bumpy, so drive slowly for the animals' sake. The hike to the lake is 2.5 miles south, then west. There is good fishing at the lake. There are old remains of a working mine. Oh, by the way, I saw my first mountain lion up there, so please be careful.

Have Fun!

*rmla.com*

*Go to the bottom of the home page.....*

*E-mail the Board with one click and get an answer to your questions or concerns within hours!*

Blue Line Design

Logos ~ Stationery  
Advertising Layouts  
Brochures ~ Posters  
Photography

Maggie Merrill  
303-840-1568  
blulin@earthlink.net  
www.bluelinesite.com

## **SELECTION AND PREPARATION FOR SHOW FLEECES**

**By Karen Kinyon, ALSA Fleece Judge**  
*Double J Diamond Llamas*  
Ft. Collins, CO

This information is designed to help llama breeders select and prepare their fleeces to show. There are more and more opportunities to show llama fleeces and this is an excellent way to promote one more important aspect of raising llamas. Shearing and showing llama fleeces also promotes the continued good health of our herds by keeping them more comfortable during the hot weather season. A fleece can be prepared and shown at more than one show, so it is good fleece management to prepare a fleece and show it throughout the entire show season. Proposals are being considered to have Fleece classes pointed, just as our Halter and Performance classes are now.

**SELECTION:** As we look at our herds and think about fleeces to show, some important aspects should be considered. Fleeces are judged on many qualities. There are double and single coated classes as well as classes for fleeces from animals under 24 months and over 25 months. Fleeces are judged on cleanliness and preparation, which are two variables that we as owners can control. Other factors are tensile strength and conditions, fineness and hand, percentage and fineness of guard hair, style and architecture, luster and uniformity. An explanation of these terms is included as well as an example of a Judge's score card and point system.

Select a fleece that is silky and soft, has uniform staple length of 3 to 6 inches. Look for crimp and luster as well as tensile strength and condition. Color is important because llamas come in such a wide variety, so select a color that you particularly enjoy. Make sure you select a fleece that has no evidence of insect infestation as this can cause a fleece to be disqualified.

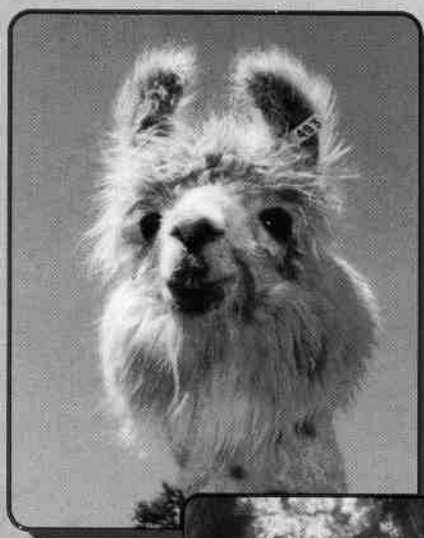
**SHEARING:** Shearing can make or break a show fleece. Make certain you know how to shear properly and use equipment that is in good working condition. About three days before you plan to shear, use a blower to remove as much dust and debris as possible. Keep the nozzle far enough away to avoid tangling the fiber. It is okay to use a grooming aid spray to make it easier to brush out remaining debris. Use a blower to distribute the spray into the fleece. Allow fleece to dry before brushing. Use a soft slicker brush and clean only as deep as the debris, not all the way to the skin. Give the llama a bath to remove grooming aid spray and dirt. Do not use any conditioners on the fleece after it is washed.

No fragrance of any grooming aid should remain as **THIS IS GROUNDS FOR DISQUALIFICATION**. If the llama is bathed before grooming, some time should pass so that the lock structure is reformed. Keep the llama on green grass or the cleanest surface possible while the lock structure reforms. Hand pick any debris before shearing. Care should be taken during shearing so that there are no second cuts. Only the prime fleece should be exhibited.

**SKIRTING:** Skirting is done on a "skirting table". This can be made from construction fencing or chicken wire, stapled to a square or rectangular form made from narrow 1"x2" boards. It is usually 4 feet square and can be set on sawhorses. Spread the shorn fleece out—cut side down on the skirting table. Remove any leg, neck, belly and weathered backbone fiber. Put this in a bag marked "2nd quality". Discard any mats. Also remove any sections with less than 3" staple length. What you have left on the screen is the prime fleece, either a barrel or full blanket. If the fleece came apart during shearing, follow the same procedures a section or handful at a time. Do not pull guard hairs. Do not trim off any weathered tips.

*(Continued on page 44)*

# The Argentines



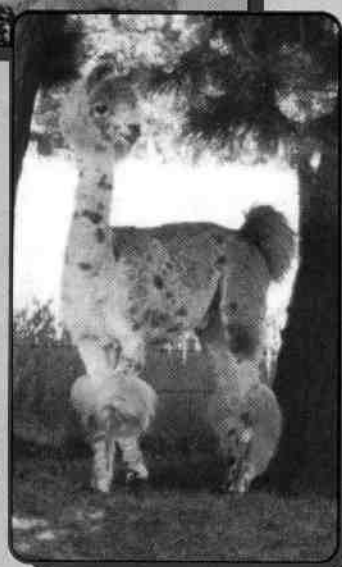
Argentine Yumbel



Argentine Yecu



Argentine Isidro



Argentine Yecu  
X

Argentine Trupa

Cloud Peak Llamas  
Pfour Pfrangle Llama Pfarm

100% Argentine  
Off the Altiplano

Pheasant Hill Farm • Happy J Farm  
Double J Llamas

Argentine Saltarin  
X

Argentine Anion

Happy J Farm • Double J Llamas  
Walden Pond Llamas

## And here's a little preview of what's in store...

These imports with their "Argentine cuts" will set foot on U.S. soil for the first time this spring. They bring with them outcrossed genetics promising hybrid traits such as athletic substance of bone; rich colors from generations of Argentine color sorting; undeniable elegance of movement and bearing; unusually calm, even dispositions; and extraordinary draping wool coverage with dense, fine, lustrous fiber known for its rapid regrowth.



# Are Coming!



Argentine Trevelin



Argentine Saltarin  
X  
Argentine Tren

Cloud Peak Llamas • Chan Tar Llamas  
Pfour Pfrangle Llama Pfarm

Any one of the adventurous breeders who traveled to South America to exhaustively evaluate and hand pick these llamas, would be thrilled to talk about them and the fabulous females making the trip north. Give them a call, or see them at the next show.

These Rocky  
Mountain Region  
owners are proud  
to present four  
magnificent  
males...

Sharon and John Beacham  
Pheasant Hill Farm  
Boulder, Colorado  
303.666.9437  
800.465.2567  
beachams@phf-llamas.com

Jane Sheppard  
Jerry Uherek  
Happy J Farm  
Beasley, Texas  
979.387.2521  
www.happyjfarm.com

Julie K. Heggie  
Gayle M. Woodsum  
Double J. Llamas  
Laramie, Wyoming  
307.721.2919  
www.llamasatdblj.com

Barbara and Dwayne Flinn  
Cloud Peak Llamas  
Story, Wyoming  
307.683.2548  
cloudpeak@wyoming.com

Louie and Kerby Pfrangle  
Pfour Pfrangle Llama Pfarm  
Worland, Wyoming  
307.347.2533

Paul and Karen Schwartz  
Chan Tar Llamas  
Sheridan, Wyoming  
307.672.5144  
chantar@wavecom.net

(Continued from page 43)

Follow show management instructions about tagging and labeling. Check the current ALSA Handbook for information needed, such as birth date of llama, age of llama when shorn, shearing date, and date of previous shearing, etc. All requirements for showing llama fleeces are in the current ALSA Handbook and should be closely considered, even when not showing in an ALSA sanctioned event, as they are the standard for showing llama fleeces at this time.

Now, you have performed all the steps to control the cleanliness and preparation of your show fleece. Once the fleece is prepared, it is ready to enter into any shorn llama fleece class. There are many shows now including fleece classes, as you start to think about the upcoming show season,

watch for them. Pay attention to entry times and requirements.

Sometimes, shows include an optional Handspinner's Choice class where samples of show fleeces are sent in advance of the show and are actually spun by the Judge. Enter as many fleece shows as you can, as this is one aspect of our show emphasis that needs encouragement. Both youth and adults are eligible to show in fleece classes. Relax, have fun, and learn as much as you can from the various Judges who see your show fleece.

*Sharon can be reached at:  
beachams@phf-llamas.com*

*Karen can be reached at:  
kkd@oneimage.com*

---

## **EXPLANATION OF TERMS USED TO EVALUATE A FLEECE**

10 is High Quality — 1 is Low

**Cleanliness:** Lack of vegetation, debris, insect or parasite infestation and odor. There should also be no color contamination from other fleeces.

**Preparation:** Careful shearing and skirting, gentle removal of debris and second cuts. Were entry instructions followed?

**Tensile Strength and Condition:** Tensile strength is the ability of fiber to withstand tension. Check by snapping a small lock between your hands, or listen for crackle sounds when the fiber is stretched. Condition is an assessment of the general health and age of the fleece. Is it "alive" or "dead"? Check staple length.

**Fineness/Hand:** Fineness is determined by the diameter of the individual fibers. Hand is the tactile feel of all the fiber characteristics combined: softness, fineness, resilience, density, flexibility.

**Guard Hair:** What amount of the fiber is guard hair — high or low? How long and coarse are the guard hairs, if present. 10 is almost indistinguishable from the undercoat; 1 is coarse.

**Style/Architecture:** Style is an evaluation of the evenness and depth of the crimp and crinkle in a fleece. Architecture is the general structure and lay of the fibers within the locks that make up the fleece as a whole. This structure should be visible from the skin to the tips of the locks. Both style and architecture should be consistent throughout the fleece.

**Luster:** The amount of light reflected by the fiber. Stretch several locks over a finger to evaluate.

**Uniformity and Overall Impression:** Are all these qualities consistent throughout the fleece? Does it have eye appeal and invite your touch?

**Reasons for Disqualification:** Not following entry criteria (use of conditioners, less than full barrel submitted, incomplete entry tag, lock structure destroyed, etc.); insect or parasite infestation; stress breaks; staple length too long or too short; excessive vegetation.

## FLEECE JUDGING CARD

Fleece Number:	1	2	3	4	5	6	7	8
Cleanliness (10)								
Preparation (10)								
Tensile Strength/ Condition (15)								
Fineness/Hand (20) <small>Very Coarse 1-4 Medium Coarse 5-8 Medium 9-12 Medium Fine 13-16 Very Fine 17-20</small>								
Guard Hair (10)								
Style/Architecture (15)								
Luster (10)								
Uniformity/Overall Impression (10)								
<b>Total</b> (100 possible)								
<b>Disqualified</b> Reason								
<b>Notes</b>								



Sahalee Llamas

Since 1984

Elizabeth Martin \* Justine Martin

P.O. Box 669  
 Marysville, Washington 98270  
 360-658-0568 bejmart@hotmail.com  
 www.sahaleellamas.com

## **RMLA SPONSORED EVENTS FOR THE REMAINDER OF 2001**

### **May 2001**

#### **Pack Clinic -**

Training to accept pack and trail work experience.

Longmont, CO - May 5-6

Contact Bobra Goldsmith 303-530-5575

#### **Rocky Mountain Llama Fiber Pool Fiber Clinic -**

Selection, shearing and preparation for Showing or processing fleeces

Ft. Collins, CO May 6 **NOTE DATE CHANGE**

Contact Karen Kinyon 970-484-6241

#### **Pack Performance Field Trial -**

Golden Gate Canyon State Park, May 5

Contact Jim Osmun 303-457-2787

#### **Jelly Bean Classic - Llama Fun Day**

A fun day in the park with llamas

Arvada, CO - May 12

Contact Mary Mauz 303-526-0092

#### **Spring Sneakers ALSA Performance Show -**

A performance show in a natural setting

Judges: Ron Baird and Lougene Baird

Arvada, Co - May 19

Contact Jerry Dunn 303-277-1129

#### **Rocky Mountain Llama Fiber Pool Fiber Clinic -**

Selection, shearing and preparation for Showing or processing fleeces

Boulder, CO May 20

Contact Sharon Beacham 303-666-9437

#### **Pack Clinic -**

Training to accept pack and trail experience

Longmont, CO - May 26 - 27

Contact Bobra Goldsmith 303-530-5575

### **June 2001**

#### **LOCC Spring ALSA Llama Show 2001 -**

Charity Show for Children's Hospital Foundation

Judges: Carol Hicks and Jan Gordon

Colorado Springs, CO - June 2 -3

Contact Jeff Rucker 719-689-9010

#### **Estes Park Wool Market ALSA Llama Show -**

12,000 attended the Wool Market in 2000

Judges: Cathie Kindler & Becky Randal

Estes Park, CO - June 16 -17

Contact Lougene Baird 303-688-5445

#### **Estes Park Wool Market**

RMLA Fiber Co-op Booth

Estes Park, CO—June 15—17

Contact Judy Cox 303-838-5790

#### **Driving Clinic -**

Basic ground driving and introducing llama to cart  
Longmont, CO - June 30

Contact Bobra Goldsmith 303-530-5575

### **July 2001**

#### **Basic Clinic -**

Training for willing cooperation

Longmont, CO - July 14

Contact Bobra Goldsmith 303-751-2149

#### **Douglas County Summer Classic ALSA Youth Show -**

A show hosted by Youth for Youth

Judge: Mary Beth Hartsough

Castle Rock, CO July 21

Contact David Kauffman 303-660-1827

#### **El Paso County Open ALSA Youth Show -**

It is our first, make it your best!

Judge: Alaine Byers

Calhan, CO - July 22

Contact Mike Shealy 719-495-0119

#### **Fairplay Llama Pack Race -**

19<sup>th</sup> annual RMLA event

Fairplay, CO July 28

Contact Roger Miller 719-749-0119

#### **Fairplay Llama Camp ALSA Performance Show -**

A performance show in a natural setting

Judge: Harold Herbold

Fairplay, CO July 29

Contact Mary Wickman

#### **Big Horn Rendezvous ALSA Llama Show -**

Driving Clinic by Jerry Dunn after show

Judge: Bruce Connally & Gayle Woodsum

Story, WY - July 28-29

Contact Barbara Coffman-Flinn 307-683-2548

**August 2001**

**Laramie County Fair ALSA Llama Show —**

Halter, performance, full youth and fiber  
Free Saturday night cookout  
Judges: Harold Herbold and Karen Kinyon  
Cheyenne, WY August 4 - 5  
Contact Robert Tompkins 307-635-2168

**Laramie County Fair ALSA Llama Show —**

RMLA Fiber Co-op Booth  
Cheyenne, WY, August 4-5  
Contact Karen Kinyon, 970-484-6241

**Boulder County ALSA Youth Show —**

1<sup>st</sup> place earns \$50 premium  
Judge: pending  
Longmont, CO August 10  
Contact Mary Beth Hartsough

**Wyoming State Fair ALSA Llama Show —**

Two shows - Two Days  
Judges: Patti Fisher & Darlene Vaughn  
Douglas, WY August 11 - 12  
Contact Gayle Woodsum/Julie Heggie  
307-721-2919

**Kiowa Creek ALSA Youth Show —**

All kids come join the fun in the sun  
Judge: Lougene Baird  
Kiowa, CO August 18  
Contact Dani Varela 303-621-9021

**September 2001**

**LOCC Fall Classic ALSA Llama Show —**

Sunny days, cool nights - great for the llamas  
Judge: Judy Moser & Harold Herbold  
Colorado Springs, CO Sept. 8 - 9  
Contact Mike Shealy 719-495-3757

**Bear Track Farm Driving Clinic —**

Golden, Co Sept. 15-16  
Contact Jerry Dunn 303-277-1129

**Sangre de Cristo ALSA Youth Llama Show —**

A fun day in the beautiful Sangre de Christos  
Judge: pending  
Westcliffe, CO Sept. 15  
Contact Rhonda Livengood 719-783-9238

**Tri State Fair Llama/Alpaca ALSA Show —**

Our first RMLA event in Texas!  
Judge: pending  
Amarillo, TX September 19  
Contact: Dan & Bev Johnson 970-242-3340

**Golden Gate Escape-Llama Packer's Weekender —**

A wonderful, fall, llama experience  
Golden Gate State Park, Golden, Co  
Sept 22-23  
Contact Jerry Dunn 303-277-1129

**October 2001**

**Taos Wool Festival —**

RMLA Fiber Co-op Booth  
Taos, NM October 5-7  
Contact Sharon Beacham 303-666-9437

**Candy Corn Fun Classic —**

A fun day in the autumn sun  
Silt, CO October 6  
Contact Mary Mauz 303-526-0092

**RMLA Annual Meeting and Conference —**

Littleton, CO October 27 - 28  
Contact any Board member

**RMLA Annual Meeting and Conference —**

RMLA Fiber Co-op Booth  
Littleton, CO October 27-28  
Contact Sharon Beacham 303-666-9437

**ALSA Rocky Mountain Regional Llama Show —**

Great regional championship competition  
Judges: Ray Howard & Cathy Kindler  
Contact Sandra Payne 719-748-9047

**November 2001**

**ALSA Grand National Conference and Show -**

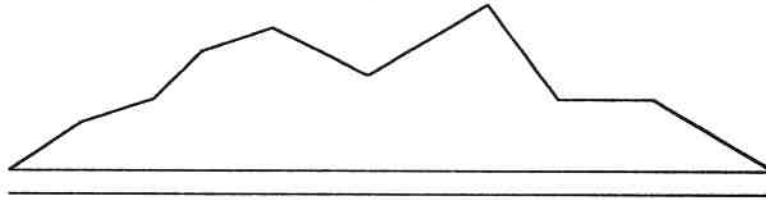
RMLA Fiber Co-op Booth  
Columbia, MO November 9-11  
Contact Karen Kinyon 970-484-6241

**Interested in Hosting an Event ?**

**CONTACT JERRY DUNN**

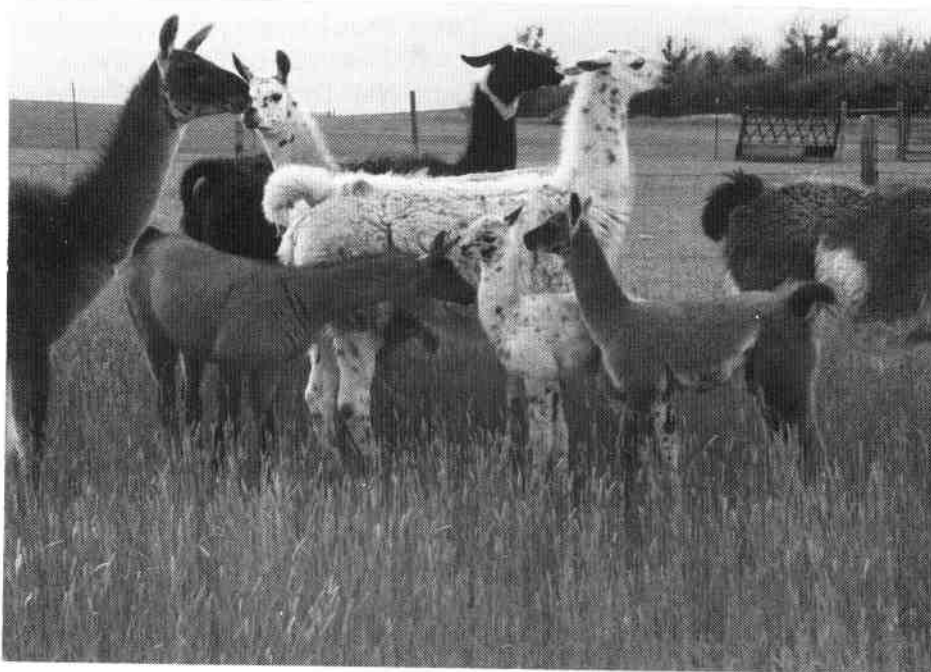
**303-277-1129**

**e-mail beartrak@gte.net**



## **BLACK BUTTE LLAMA'S**

**PRIVATE TREATY SALE**  
**SATURDAY JUNE 23<sup>RD</sup> 2001**  
10:00 pm – 7:00 pm  
(Free Lunch Served)



### **Complete Dispersal Due To Our Health**

17 Llama's – All Registered

3 Studs

3 Geldings

5 Young Females (open)

3 Older Females (open)

3 Weanlings (2 female & 1 male)

Tack & Groom Blower

Call for Map & Directions  
Mike & Janet Jordan  
497 Black & Yellow Road  
Gillette Wyoming  
(307) 682-3979

# Wheatfield Llamas



T.B.F. Keiko  
(Bolivian)  
FW Sugar Baby x Inti of Bolivia

Our studs sire  
Champions and Top  
Ten Winners!

Outside breedings  
available



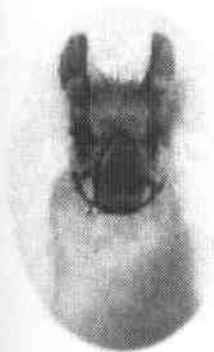
WL Calbert Cheaney  
(Bolivian)  
LW Serena x Mr. Kosciusko



Wheatfield's Sir Nicholas  
4th Place  
Heavy Wool Juvenile Male  
2000 Grand Nationals



Wheatfield's Misty Melody  
Reserve Champion  
Heavy Wool Juvenile Female  
1999 Grand Nationals



Wheatfield Celebrity Shu  
Grand Champion  
Medium Wool Yearling Male  
2000 Grand Nationals

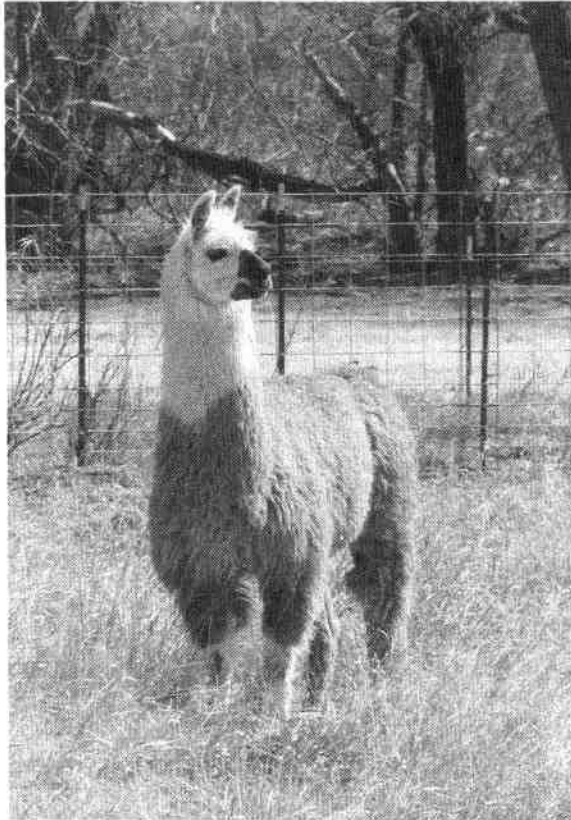
Wheatfield Llamas  
Rex & Dalene Reinecker  
6850 County Road AA  
Quinter, KS 67752  
email: rfeedlot@ruraltel.net  
website: wheatfieldllamas.com



Wheatfield Fudge  
4th Place  
Heavy Wool Yearling & 2 Yr Male  
1999 & 2000 Grand Nationals

These winners and other show & breeding quality animals are for sale.  
Also for sale: companion, pack and guard animals.

PHF CADFAEL'S **"BANNER"**



*Cadfael X PHF Delphinium*

Introductory breedings now being scheduled for 2002 crias.

**2000  
NWSS  
Grand Champion**

**1999  
EPWM  
Grand Champion**

**1999  
Wyoming State Fair  
Reserve Grand**

**ALSA  
Recognition of  
Merit (ROM)**



"Dazzle Me" (F)  
9/22/00



"Jazz Man" (M)  
3/22/01

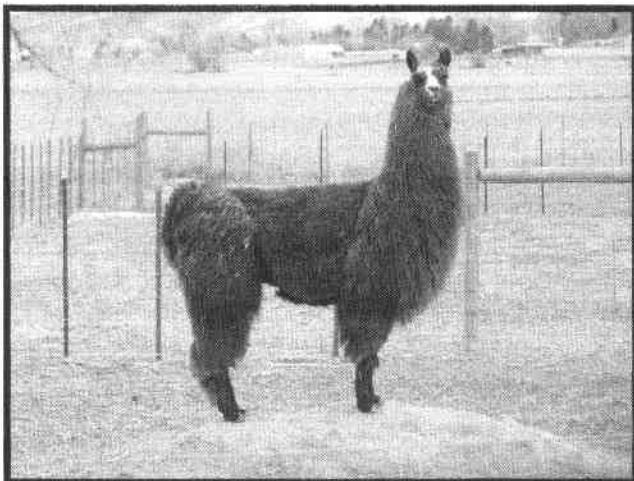


"Banner's Ravello" (M)  
1/2/01

**YOU CAN'T GO WRONG WITH A "BANNER BABY!"**

Ladyhawk Llamas proudly presents our second herdsire:

**TSX CASINO**



*TOP FLIGHT X CHANDI*

**Conformation & Presence!**

**This guy has it all!  
And LOOK at that FIBER!**

**Half-Chilean, charcoal gray, and  
sweet as can be! They don't come  
any better!**

**BOOK YOUR LADIES NOW!**

Carolann & Kim Evans/Ladyhawk Llamas 15102 N. 83<sup>rd</sup> St. Longmont, CO 303/682-1046  
[www.ladyhawkllamas.com](http://www.ladyhawkllamas.com)



## **WHAT DID YOU DO EXCITING LAST SATURDAY NIGHT?**

**By: Karen Kinyon,**

*ALSA Fiber Judge*

*Double K Diamond Llamas,  
Fort Collins, CO*

Bob (my south Dakota city-boy husband) and I were working outside doing a little lawn clean-up and llama toenail trimming on a Friday evening. We had both worked hard all day, so were wrapping things up anticipating a quiet, relaxing night.

We had noticed one of our llama babies, White Lightning, a three week old male, straining over the bean pile for quite a while. After a couple of hours of this and no apparent results, I call the vet and ask what may be the problem. We have many large trees and the llamas had been happily gorging on fallen leaves so we decided that White Lightning may have had too much of this "llama junk food" ( a term coined by Sharon Beacham) and was constipated.

An enema was necessary to relieve the problem. I didn't tell Bob this right away. The vet had made this sound quite complicated and I wasn't sure exactly how to go about it. I had never given anything an enema before. I consulted the "Caring for Llamas and Alpacas" book and it confirmed what was needed, but didn't give very clear directions. I called one of my llama mentors, Sharon Beacham, and she told me what I needed to know. It involved a 20 cc syringe, some liquid Ivory soap and warm water, and I had all I needed to remedy the situation.

After dinner, I told Bob I needed his help to give Lightning an enema. He looked at me in horror. (I did not know until later that he had visions of flood lights and garden hoses at this point.) It was dark and chilly, so we got our coats on and headed out. I picked up the flashlight on the way and Bob headed for the garage. I asked where he was going and he told me somewhat disgustedly

that he was getting the lights. I showed him the flashlight, which he acknowledged skeptically and we went out to catch Lightning. I had the syringe, filled, in my coat pocket, so we placed the flashlight on a feed bunk. Bob picked up the little guy and pointed his rear end into the flashlight beam.

I gently inserted the half inch tip of the syringe into the rectum and put in the solution slowly. We released Lightning, stood back and Bob said "And what did you do exciting on Friday night?" We chuckled and he went on into the house to finish the hockey game, extremely relieved that he hadn't had to do this to a full-size llama. They are much harder to pick up and aim into the flashlight beam, you know!

I stayed out with Lightning to observe what happened next. Sharon had said we should have results in about 20 minutes. It is a funny thing to follow a baby llama around the bean pile with the flashlight beam directed at his little fanny. He kept looking back at me like "Why don't you shine that thing somewhere else?"

It didn't take long, and the results were about the size of a spruce cone! Poor little guy, he looked very relieved and went to lay down by his mom. I went back into the house, feeling very satisfied that I had successfully tackled yet another milestone in raising llama babies. Bob said "I guess you and I have just about done everything together now," with a smile.

The moral to this story is: yes, you can do it, know who to call for suggestions and have a very understanding spouse who has a great sense of humor!

*Karen can be reached at:  
kkd@oneimage.com*

## JESTER

By: Miriam Paisner

Jester is a jovial llama, a senior citizen of 19 or 20 years, who spends his days jockeying around his home at Rocky Mountain Llamas, near Niwot, Colorado. Once, he was a super stud, but now he's retired and just content to browse, roam, and relax in the sun or shade.

However, one day this February, Jester's curiosity got the better of him.

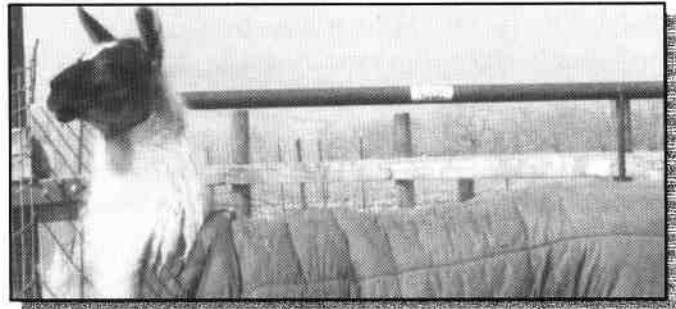


Perhaps he just wanted to visit the ladies at the far end of the pasture (near the gate) — past studly memories being what they are and not far behind him.

He decided to take a stroll off the property. So, he wandered down the long driveway, out the gate, and onto the fast-moving country highway. Luckily, a good neighbor, Nikki, was driving the L-shape in the road. She must have thought it strange to see a llama slowly lumbering down the road under his sleeping-bag-blanket. (Being this is winter, that is his daily garment.)

She rushed to the ranch office and told us about Jester. Diane and I raced to the road and there he was, just ambling along. Being that he's an old guy, he doesn't wear a llama halter anymore, so our job was to gently turn him around —

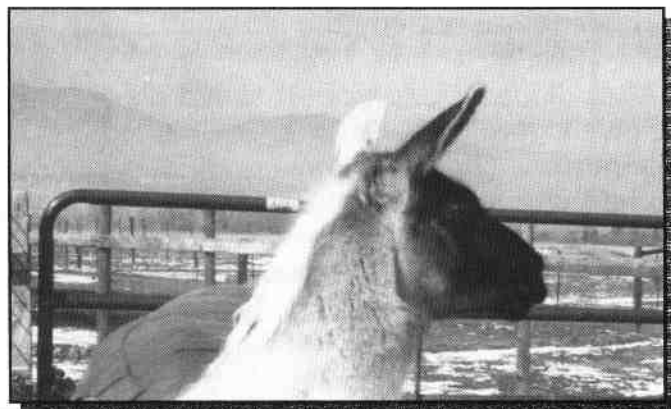
with an arm around his neck — and slowly walk him back through the gate (close it!) and stroll with him up the driveway until he was safe and secure. It was like walking with a good friend, an arm around the neck or shoulder, sharing the fresh country air and a lazy conversation, mostly mine.



All was fine until about an hour later, another good Samaritan appeared at the ranch office and asked if we knew that there was a llama on the loose?

Not again! (one of our alpaca boarders had come in and left the gate open by mistake.) Jester had seen his chance and made his great escape, once more. And again, we raced down the driveway and "captured" our joking Jester just as he was turning the bend in the road. So once more, I put my arm around his neck, turned him and together we strolled back home.

Jester now lives within the closed inner gates of the ranch — still roaming, browsing, munching, sleeping, lounging and whatever else retired stud llamas do. Most likely, he remembers his quick vacation and still wonders what lies beyond the bend in the road! And, if given the chance, he may just try again to find out!



## **RMLA MEMBERS PROVE TO BE AN ADVENTUROUS LOT**

**By Gayle M. Woodsum,**  
*Double J Llamas,*  
*Laramie, WY*

Always aware RMLA shows and other regional events seem to offer an extremely high level of camaraderie and plain old fun, I was becoming suspiciously certain that it was RMLA members providing the most genuine, heartfelt and rowdy displays of support for each other at national events such as the ALSA Grand National. It is now a given to me that Rocky Mountain Region llama owners and breeders are a presence to contend with



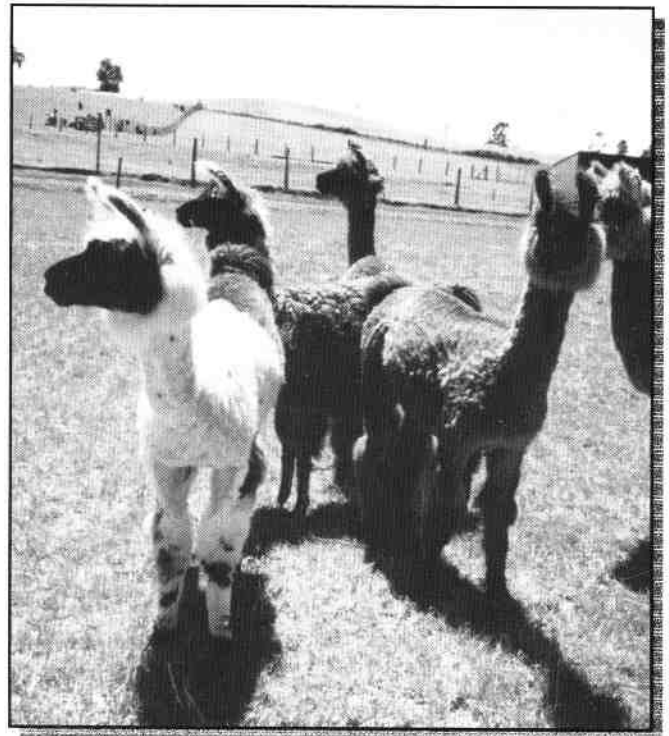
wherever there might be a llama happening. Therefore, it really should have been no surprise to discover that nearly half of the serious breeders who traveled across the equator in mid-February to attend in person one of the most unusually llama sales ever held were RMLA members.

Of 11 potential buyers who actually made this long and complicated trip from the United States, 6 are regulars at RMLA-sponsored shows. Spurred on by photographs and reports from Nebraska's Jerry McRoberts on the unique Argentine and Argentine-type llamas he had just purchased from a trip to southern Chile, together with a web site that would serve as the primary promotional and execution tool of the sale, we six could not resist the

call to the adventure of searching for llamas in the land where domestication first claimed them.

Sharon Beacham of Boulder, CO was looking for large vigorous females to add outcrossed genetics to her herd. A fiber expert, Sharon has had years of well-recognized success with a breeding program that creates some impressive Peruvian/North American crosses. Hearing about the unique qualities of the Argentine llamas (extremely rare in the United States at this time) this thought of finding out what a new line of hybrid traits might offer pushed Sharon into making travel plans.

From northern Wyoming came Barbara Coffman-Flinn. Known for typically occupying an entire row of stalls at nearly every RMLA show, then draping those stalls with countless halter and performance championships, Barb had been following the breeding program known as the Temuco Project since its inception. One of the first to learn of the suddenly organized sale brought on in part by the blossoming FMD scare, she was



quickly enthralled with the idea of going there herself to see what different and exciting traits

*(Continued on page 54)*

(Continued from page 53)

might be available for her breeding program.

Out of Nebraska's icy winter winds came Randy Cipriano. Not known for shying away from new prospects to add even more style to his already award-winning herd, he too was intrigued by the idea of new genetics promising exceptional substance and outstanding wool coverage.

Jane Shepherd, another fiber enthusiast whose growing breeding program shelters itself comfortably in Texas for the winter, then settles in Colorado with the Beacham herd during the summer, jumped without hesitation into the opportunity for llama shopping in summertime Chile. She was joined by another Texas RMLA member, Dolores Gardner, who traveled to Temuco in order to make assessments and recommendations for a number of llama breeders

As for my partner in the llama business, Julie Heggie, and me, the lure of something new and different for our own blossoming show herd, together with the romance of seeking it out in the land of the tamed llama's



origin, proved utterly compelling. While I was the lucky one of us to make the trip from Laramie, WY, Julie found the ability to monitor ongoing sale happenings by computer an extraordinary adventure in itself.

Pulling together this wild combination of competitive motivation and idealistic desire was the web site created by two of the

Temuco sale partners, Paul and Sally Taylor of Montana. What we found on the Internet before winging our way south was a veritable catalog of nearly 150 animals. Offered over computer screens were color photographs, individual data and lineage information on both males and females. Some had come straight from the Argentine altiplano while others were Chileans exhibiting Argentine-type characteristics.

The vast majority of the marketing for the Temuco sale was done via the Taylor



website. All the bidding and sales were ultimately funneled through the same Internet process, whether a purchaser had the good fortune to be physically present at the sale or was there only through a cyberspace connection.

Between the history-making Internet basis for this sale, its delightful foreign location, and the llama-loving passion of the buyers, the event was like no other. Those of us who went to Chile were treated to a beautiful country, a warm and welcoming culture, and elegant hospitality.

There was also something quite amazing about bundling oneself off to South America to join up with llama enthusiasts met on the local show circuit. The RMLA members who made this journey invested a great deal of time, energy, expertise, and expense to comb through a large diverse llama herd, seeking those animals whose exotic look and amazing

fiber was matched by conformational quality superb enough to warrant importation.

During the process of careful selection, all of us became closer friends with greater than ever respect for one another's knowledge, business acumen, and pure love of llamas. We shared assessments, concerns, frustrations, and celebrations. We supported each other through disappointments and cheered each other on as we fell in love with individual animals who, over a week of long days and nights, soon became known to us as more than numbers in a catalog.

When all was said and done, there was enough difference in taste and enough care for one another to assure there would be no competition between the buyers in Chile during the bidding process. Altogether, RMLA members purchased about 20 llamas, including the high selling male and female. We acted together as advisors, partners, and friends to complete the first step in bringing home to the RMLA region some exciting new blood and yet another infusion of the irrepressible enthusiasm we are becoming famous for.

Gayle can be reached at:  
dbjllamas@aol.com

*rmla.com*

*Click on members and get a complete list of 2001 RMLA members — addresses, phone numbers and e-mails!*

*See who your nearby RMLA neighbors are, get together, do something fun!*

## **MORE FROM CSU ON LIVESTOCK HANDLER SAFETY...**

Livestock have poor depth perception when in motion. This is why they often lower their heads and stop to look at strange things on the ground or balk and refuse to walk over a puddle. Horses even shy at shadows or a change in flooring surface or texture. ...

Cattle, horses and sheep have more sensitive hearing at high frequencies than humans. Avoid loud or novel noises — they distress livestock and can result in balking and agitation. Any quick movements by the handler can cause the animal to shy away from the handler. ...

Another point to consider when working livestock is the flight zone. The flight zone is the animal's "personal space." Movement into an animal's flight zone causes the animal to move away. Understanding the flight zone can reduce animal stress and help prevent accidents to handlers. Flight zone size depends on the tameness or wildness of the livestock. With frequent handling, the flight zone decreases in size. An animal ... approached head-on has a larger flight zone than if it was approached from the side. The edge of the flight zone can be determined by slowly walking up to the animal. The point where the animal begins to move away is the edge of the flight zone.

More from CSU elsewhere in this *Journal*.



ALPACAS

FIBER

LLAMAS

OWNERS  
**ROBERT & BARBARA HANCE**  
 11818 W. 52ND AVENUE 11855 W. 52ND AVENUE  
 WHEAT RIDGE CO 80033 WHEAT RIDGE CO 80033  
 (303) 422-4681 FAX (303) 422-3568 (303) 467-3261  
 Email: [hancelama@att.net](mailto:hancelama@att.net) Web: <http://home.att.net/~hancelama/>

## **SALSA & INVIERNO DO DRIVING**

**By: Mary Summers,**  
*Rainbow Valley Llamas,*  
*Placitas, NM*

**T**eam driving is a unique way for you and your llamas to enjoy being out together. It is a wonderful way to promote your llamas and add another activity to the growing list of "What do you do with llamas?"

### **What is Team Driving?**

Two llamas pull a cart side by side as a team. Since llamas are herd animals they really enjoy activities that they can do with another llama. I know because I asked Invierno and Salsa. These two guys have been driving together since they were two years old. Team driving puts less stress on each llama and less weight onto their shoulders since they work together as a team.

### **How can my llama learn to drive as a team?**

Llamas can be taught to drive as a team with no prior experience in driving, packing or other handling. There is no ground driving. The llama stands tied up short between the two experienced llamas for an extended period of getting acquainted. He is then moved and harnessed. After that he is put back between the two experienced llamas and all are hooked up to a cart in a triple hitch. The trio is off on a new and wonderful learning adventure. The

trainee reacts as if this is all perfectly natural. It helps if your llama has been desensitized first. Things will be touching their body and legs. The harness is minimal and easy to put onto a llama. Salsa and Invierno wore a driving harness before they had ever had on a packsaddle. Their only prior training was grooming for shows. There is a neck collar and a front cinch that goes around the shoulders and under the sternum. It connects to the neck collar between the front legs. There is breeching that goes around the buttocks below the tail and connects to the cinch also. Assembly is best practiced off the llama on a wooden proto-llama first. A walker is always available to move up to the heads of the llamas to provide any needed direction to the new team.

### **What problems might occur?**

Will the new llama be scared? The cart behind him is a new idea. At first new llamas have lunged forward. Some have sat down. They quickly see that the other llamas are doing this happily and adjust to a new challenge. We often underestimate our llamas. They are so smart! The llamas do not run with the new llama in the team. All are kept to a well controlled walking pace at first.

### **When can I start driving for fun?**

You and your llamas can start driving as a team on the first day of training. Each llama goes out in a triple hitch, then as one of a double hitch. After that the two new trainees go out together. A walker is always ready to move up to provide direction. Normally the walker drops back by the side of the cart as the driver tweaks the lines to direct the llamas. Within a few short driving sessions, Salsa and Invierno drove in a parade. The first year of driving they went to the children's hospital and gave cart rides. They also earned hay for the other llamas by giving cart rides at children's birthday parties.



DIRECTOR AND PSYCHOTHERAPIST  
LLAMA DEARA RANCH

HANNAH-LEIGH BULL, MA, LMFT  
ABIQUIU, NEW MEXICO (505) 685-9416

### **What are the pros and cons of this method of cart training?**

The llama knows where the cart is from the start of training. If one ground drives first, they don't start off with a cart, obviously, so may not see the need for wide turns to accommodate the cart. Remember, llamas are smart, right? Llamas like to work as a team, doing things with another llama. They can share the workload. Ground driving is eliminated so if you have limited time or physical restraints it is still possible to train a driving team. It took a long time for Salsa and Invierno to change pace or to lope with the cart. This was probably my fault because I lacked the confidence to let them move out faster on command in the early part of their training. I have seen llamas made to run around in a circle on a lunge line. They are then taught change of pace. This might have helped Salsa and Invierno. At first I had some real safety concerns with this training method. I suppose problems can arise with a llama who feels severely challenged by it. This was not the case with the five llamas that I trained. Now I feel more comfortable about hooking a new llama up to a cart between my experienced guys than I would about hooking a new llama up singly to a cart for the first time after just ground driving. Llamas don't usually let themselves get panicked. Remember, llamas are smart!

### **Salsa and Invierno's unique driving experiences.**

Salsa and Invierno drove together in a practice arena with a horse and rider. This occurred at the Fort Worth Stock Show. They had been around horses before but not in a small indoor arena. We were practicing in the arena when a horse and rider entered to practice too. Actually the llamas were happy to leave the arena to the horse. After that we drove up and down the main aisles between the stalls with people walking all around. This is where they really got their backing experience! We got into some pretty tight spots. We stopped at each intersection and looked both ways for "traffic".

We drove in a parade at night. The band in front of us had lights and our cart and harnesses were lit with small colored Christmas lights. All the streetlights were turned off. I threw candy from the cart to the onlookers. Salsa thought that I was throwing treats and had to walk to the curb a few time to check it out and to greet the people whom he could not see well from out in the street.

Driving around wild animals? No, no, not near the mountain lion, pleaseeeee! Let's go see the eagle again. Salsa and Invierno gave cart rides at our local wild animal park for native New Mexico species. They donated the \$350 earned for the day to feed the animals there, even the mountain lion! Other than the presence of the mountain lion whom we did not go near, the situation was ideal. Believe me, the llamas knew where the mountain lion was. We followed paved paths along trails to different habitats where animals were housed in their natural native environment. The public loved the llamas and cart rides. I could take two people at a time. There were a few rolling hills. The llamas did this for 6 hours with a couple of water, snack, and rest breaks.

After the mountain lion, kids in body casts, wheel chairs, or on crutches, no sweat! Our indomitable team suffers the indignity of driving in a parking lot. This was the Spring Open House for our Children's Hospital in Albuquerque. Lots of gawkers on the busy street next to the parking lot got a big surprise that day. Salsa and Invierno, new kind of Easter Bunnies, were giving cart rides to the children who came in all sizes and with all sorts of disabilities. Our guys were extremely patient in giving both cart rides and receiving hugs and pets! Llamas and cart were decorated for Easter with flower garlands, stuffed animals, and Easter eggs.

*Mary can be reached at:  
rvllamas@nmia.com*

## LIBRARY NEWS

**By: Sharon Herbold, Librarian**  
Pikes Peak Woolies,  
Colorado Springs, CO

As I write this article, there are hints of spring in the air. It has been a long, cold winter. If you are like me, the warm weather brings thoughts of the approaching hot weather of summer. Of course this means it is time to think about shearing your llamas and alpacas. The library has many resources related to shearing.

After the fiber has been sheared off your animals, you can find additional resources in the library that will help you learn how to work with it. Topics you might want to explore through the library include spinning, with a spinning wheel or drop spindle, dyeing or weaving.

The library list has been updated on the website and any items can be requested there. If you need additional information I can be contacted at [ppwoolies@earthlink.net](mailto:ppwoolies@earthlink.net).

Happy Shearing!  
Sharon can be reached at:  
[ppwoolies@earthlink.net](mailto:ppwoolies@earthlink.net)

*rmla.com*

*Click on Library.....  
If your dues are paid, you can check out  
a book through the website!*

*It's easy, try it today!*

## IMPORTANT NEEDS – GREAT PRODUCTS

### WEIGHING



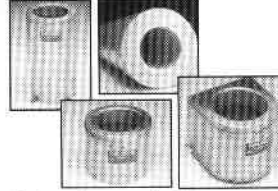
A complete electronic scale for crias, adults, fleece, all needs - made for alpacas and llamas

### FENCING



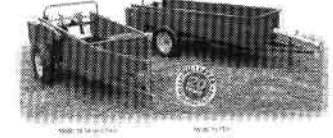
Heritage premium vinyl. The safest & most beautiful fence. The fence that lasts forever without maintenance or replacement needs.

### WATERING



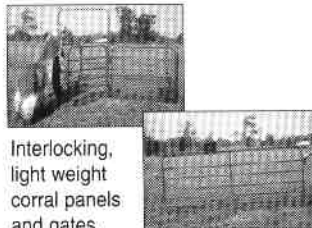
Nelson Automatic Waterers

### WASTE DISPOSAL



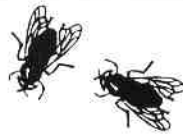
Millcreek spreaders have been rated the best of the small spreaders.

### CONVENIENT FOR HANDLING & SHOWING



Interlocking, light weight corral panels and gates.

### FLY CONTROL



We offer a safe non-chemical system used by hundreds of camelid owners.

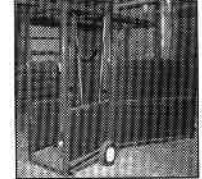
### TRAILORING



Stainless steel for beauty, durability and nicest ride.

### CARE, HEALTH CARE, MAJOR TASKS

These chutes are used at major llama & alpaca veterinary universities including Auburn, Ohio State, Oregon State, Michigan State, and University of Pennsylvania.



Offered by Useful Farm Products & Fencing Forever

For additional information, pricing, shipping, costs & ordering contact us at 3540 76th St., Caledonia, MI 49316  
Call 888-771-3276 • Fax 616-698-0870 • e-mail [sales@usefulfarm.com](mailto:sales@usefulfarm.com)



## **A TRIP TO THE LIBRARY...FUN!**

**By: Teri Nilson Baird,**  
Broken Windmill Ranch,  
Elizabeth, CO

Right after the National Western Stock Show in January 2001, I received a call from Joanne LaGuardia of the Sheridan Public Library in Denver, Colorado. She asked if I would be willing to bring animals to the library on Saturday, February 10 for a family-oriented program.

Joanne had gotten my name and number from my ranch listing on the RMLA web page. She had also attempted to contact several other members, all of whom happened to be on the board of directors and were scheduled to be in a meeting that day and unable to help.

I told Joanne I would be glad to help. I asked her if she could print out flyers and directed her toward my web page, where I had created a "llama fact sheet." It was geared mostly toward someone who knew nothing about llamas rather than toward a future llama owner.

I printed out a llama clip art Valentine's Day cartoon and faxed it to Joanne, who duplicated it and had them available for the children to color.

Finally the day came, and our intrepid neighbors and fellow RMLA-ers, Russ and Maggie Brown, helped me blow out my two most sociable (and calm) girls. We loaded them up and headed out through the unplowed roads of Elbert County. Things looked better the closer we got to town and I had no trouble navigating the parking lot at the library, which is in the same building as the Sheridan High School.

The girls were real champs. They walked right through the theft-control detectors and between the stacks. They were fascinated with all the children sitting on the

floor in front of them; in fact, Lollie wanted to start giving llama kisses well before I was ready for her to start! One little girl asked me if my girls were wearing clothes.

Many, many thanks to Russ, Maggie, and Deanna Lewellyn, Diane Walker Tompkins, and Rob Knuckles. All of them thought they were coming to provide moral support, but I ended up putting them to work answering questions, holding a llama while children petted, keeping a llama calm while the other one took a short walk outside (I didn't want to ignore signs of an impending potty break in a carpeted area.)

I learned a lot that day:

- next time, I will try and arrange a llama story to be read to the children.
- I will compile a list of children's books featuring llamas and have that available to pass out.
- I will take along a handful of wool to be passed out, one that won't matter if I don't get it back.
- And most importantly, I know I have two girls who can handle the library thing the next time we go.

*Teri can be reached at:*  
[teri@brokenwindmill.com](mailto:teri@brokenwindmill.com)

*RMLA is looking for a Youth  
webmaster to manage the  
Youth section of the website.*

*Interested?*

*Contact Barb or Bob Hance  
hancelama@att.net*

## 4H LLAMA CLUBS AND RMLA

By: **Alaine Byers,**

RMLA 4H Co-Ordinator, ALSA Judge  
Indian Peaks Llama Ranch,  
LaVeta, CO

### What is 4H?

**4H** provides many opportunities for youth to learn, work and enjoy llamas through events and activities. 4H is a "learn by doing" organization offered in many different ways in each county across the country. The 4H Llama Club is known as a "project club" with llamas being the club's focus, similar to a horse or poultry club.

4H provides learning experiences in which youth grow through their development of life skills such as: communication, decision making and leadership. Participants in the llama clubs explore careers and positive leisure time activities, as well as refine the skills and knowledge necessary to care for our llama friends.

The 4H llama clubs around the country may have a different focus, or choose different projects within their club. Llamas and the sponsoring ranches provides hands on experiences, demonstrations, field trips or exhibits on all facets of raising llamas. From fiber grading and shearing, packing and training, herd management and general health care to participating in Youth Judging Contests and exhibiting at 4H shows or ALSA youth classes and shows.

4H, through its "learn by doing" approach, stresses certain areas of youth participation. This emphasis is placed on exhibition of the project, demonstrations or speech arts presentation and receiving instruction in judging and participation in judging contests. These areas of emphasis also play a major role in a club receiving its charter "seal" and club certificates of accomplishment.

### RMLA and 4H

The Rocky Mountain Llama Association sponsors a number of youth and 4H events each year. The RMLA Youth Foundation awards grants to RMLA youth members who wish to attend regional or national shows. Within the Rocky Mountain region presently, we have between 30 and 40 4H Llama Clubs from different states that have contacted the RMLA 4H committee.

We hope to act as an information hub of the ever-growing Llama 4H wheel. A place where questions, problems, how to's, club experiences and accomplishments and support are centered. To facilitate this exchange we have set up the 4H page at the [rmla.com](http://rmla.com) web site. We will also have a chat room up and running soon.

### Organizing a 4H Llama Club

Interested boys and girls (at least 5 members) and their parents may start a 4H Llama Club by contacting their local County Extension Agent. The Extension Office will supply you with enrollment material and, on their return, record the information in the county office. There may be a Llama 4H group already active in your county that you may wish to join. Your County Extension Office would have that information.

Most County Extension Offices do not have "llama project" literature to send out to the clubs. RMLA published its first edition of the ***Youth Llama Project - Members Manual*** in 1991. It is now in its fourth printing. This manual has been used across the country by 4H leaders and members. This manual may be purchased for \$3.00 each from the RMLA Bookstore, located with Keith and Katy Wegner, Golden, Colorado. They may be reached at 303-272-9445 or [k2wegne@ibm.net](mailto:k2wegne@ibm.net). And you may want to order an extra copy for your local County Extension Agent. RMLA also acts as a wonderful resource for 4H llama project

materials through the RMLA Library.

The future and motion forward of our industry lies with our youth and their continued and inspired interest in llamas. By combining all the talent, knowledge, resources and energy of programs for our youth through RMLA, 4H, FFA, or ALSA youth programs, we as llama lovers, breeders, packers, and spinners can look forward to many more rewarding years with LLAMAS.

*Alaine can be reached at:*  
allama202@aol.com.

### **MORE FROM CSU ON LIVESTOCK HANDLER SAFETY...**

Tame animals may not have a flight zone and should be lead by halter or feed bucket. Never tie or wrap a lead rope or halter to the body of a handler, no matter what species of livestock you work with. If a handler enters the flight zone too deeply, the animal will either bolt and run away or turn back and run past the person.

The best place for a handler to work is on the edge of the flight zone. There is a point-of-balance for moving animals back or forward. The point-of-balance is at the shoulder, perpendicular to the length of the body. Stand in front of the point-of-balance to back up an animal and to the rear of the point-of-balance to move the animal forward. If the handler makes the mistake of invading too deeply into the flight zone when driving livestock down an alley or into a crowded pen, the handler stands the risk of being run over by the livestock as they bolt back and run by or over the handler.

More from CSU elsewhere in this *Journal*

*Editor's Note: We would like to have more writings by the youth of RMLA, as this short piece is. So, all you younger set -- get out the pen and paper ( your computer ) and send us your thoughts!*

### **STRANGERS**

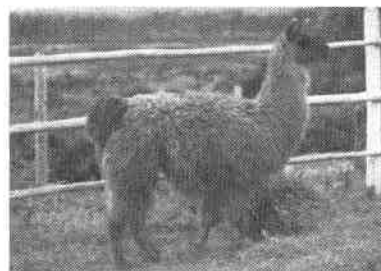
*By: Shylan Bearden, Sheridan, WY*



**He** nervously regards the four people, only one of which he knows as a friend.

She alone notices his four feet begin to move anxiously. The black and white tuxedo, his daily attire, seems out of place among the four who wear jeans and t-shirts. Glancing at his friend he hums a high note from an old family song which she answers in like manner. His fuzzy, banana ears perk forward at this and he stares at her once more, his big, llama eyes begging, please take me away from here!

*Shylan can be reached at:*  
busysix@wyoming.com



### **Rolling Rock Ranch**

Barbara & Augie Dean  
369 C.R. 22A  
Montrose, CO 81401  
(970) 240-4939  
rrranch.independence.net

## FELTING CLINIC AT MILLERS' — GREAT FUN!

By: Deanna Lewellyn,  
Foothills Llamas  
Littleton, CO

On February 17, 2001, a small group of us llama people gathered at Roger and Betty Miller's home in Western Kansas (not really, but the drive felt like it) for a felting clinic. The clinic was certainly worth every bit



of the drive. Marlice Van Zandt is a creative and talented instructor and her clinic was wonderful. I learned so much, but there is still so much more to learn about this terrific craft. I now have just enough information to



be a little bit dangerous — and look forward to learning more stuff so *I can really be dangerous!*

At the end of the clinic, I had a beautiful piece of felted wool shaped like a flat cylinder. It really is beautiful and I am amazed and in awe each time I look at it, look at it, and look at it. I'm afraid to go any further for fear of



ruining the piece, but promise I will finish my vest sometime this year!

Those in attendance included Jim, Brenda and Jackie Vance, Jeanne Warren, Ann Braun, Mary Wickham, Cathy Wittrup, Larry and Deanna Lewellyn, Dylan Avila (Deanna's son), and of course Roger and Betty Miller, Marlice and her three guests. The group was small, but productive and fun.

For those of you who are considering exploring this great use of wool, I have the following hints to offer:

✂ DO NOT take the husband who says he will also make a vest (so you buy him some wool). He may decide to chit-chat the day away, take pictures and drink a few beverages. If he offers moral support, that's okay, I guess. Do not let husband touch your project. He can make his own.

✂ DO NOT wear your cowboy boots when standing on your feet for 7+ hours and bending slightly over during this time. Especially if you are 40 something .....

✂ DO NOT decide to make a vest or other large project your first time, experimenting with this craft. Sometimes, smaller is better.

(continued on p.64)

**Triple H Llamas Arizona**



**Home of GVL El Santo!**

*Our Full Chilean Herd Sire!*

*Top Flight*

*Cima Bandado*

*Miss Chi Chi*

*Macho Camacho*

*Macho Blanco of Tunitas*

*GVL Arabella*

*Vincent Allspice*

*Vincent Nutmeg*

***We've Been Busy!***  
***Check these babies out!***



***THLA Yukon Cornelius 10/22/00***  
***Amaretto De Temuco X GVL Belissima***



***THLA Sweet Capsicum 3/10/01***  
***GVL El Santo X Sharp's Tempest***

***Mike, Jayne and Liam Hopkins***

***H.C. 31, Box 213***

***Happy Jack, Arizona 86024***

***(520) 477-2404***

***e-mail: [thla@theriver.com](mailto:thla@theriver.com)***

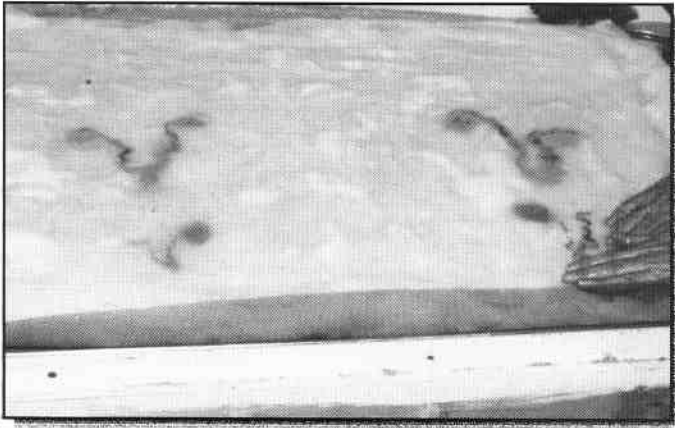
***Showing – Breeding – Sales***

***Limited outside breedings to Santo. Please inquire.***

(Continued from page 62)

✂ DO NOT compare your project to others, especially those more experienced. In the end, I promise, it WILL work out and you will be very pleased with your work and yourself. Just ignore your bad back and don't try to bend over for a few days — you can't.

✂ DO NOT buy the small round oil drip pan — you need the large, rectangular oil pan large enough to hold the large pieces of wool you work with to create your masterpiece.



✂ DO attend a clinic and absorb the knowledge of others who have already been there and done that!

✂ DO go to Roger and Betty's place (call first). It is really beautiful and they are terrific hosts. Pack a lunch for the drive.



✂ DO take your son or daughter so they can make a small craft, or two or three,



while you work on your project. My son completed two projects before I finished half of mine.

✂ DO buy your wool (if you don't have your own ready to felt) from the RMLA Fiber Co-op. The wool Karen Kinyon mailed us the first time (dogs tore up the box and then dragged a good portion of the wool over the front yard) was absolutely gorgeous. The second batch of wool was equally delightful. You may want to ask Karen to have it delivered by the postal person and not UPS, as there is less likelihood it will be left at the fence for critters to play with.

✂ DO research "felting" on the internet. I've found a lot of "smaller" items I believe I can easily make until I become more comfortable with this craft. Now, if I can only find the time.....

I am really amazed that we can take large, soft, fluffy pieces of fiber and make a nice, tight, flat piece of material. The process is incredible and I really recommend each of you give it a try.

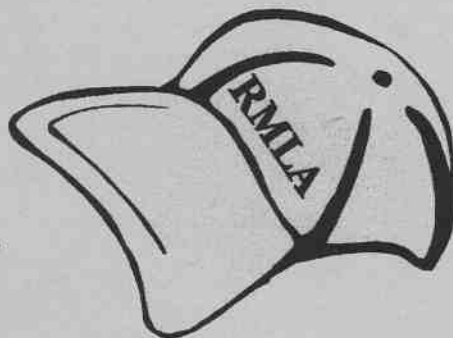
*Deanna can be reached at:  
fhllamas@aol.com*

# AVAILABLE NOW RMLA GEAR WITH RMLA LOGO

Denim Shirt: \$30.00 + \$3.50 S&H

Hat: \$13.00 + \$2.50 S&H

(Colorado Residents add 2.9% Sales Tax)



Submit your order to:

Jill Knuckles

2970 A 1/2 Road

Grand Junction, CO

81503-2312

(970) 241-4112

**RMLA**



Rocky Mountain Llama and Alpaca Association

# ORDER NOW

## COLORADO LIABILITY STATUTE SIGN(S) FOR YOUR FARM OR BUSINESS

\*\*\*\*\*

### WARNING

**UNDER COLORADO LAW, A  
LLAMA PROFESSIONAL IS  
NOT LIABLE FOR AN INJURY  
TO OR THE DEATH OF A  
PARTICIPANT IN LLAMA  
ACTIVITIES RESULTING  
FROM THE INHERENT RISKS  
OF LLAMA ACTIVITIES,  
PURSUANT TO SECTION  
13-21-119, COLORADO  
REVISED STATUTES.**

\*\*\*\*\*

12" x 18" Black on White Metal Sign \$35, plus \$1.02 for Colorado State Tax, Shipping Included

12" x 18" Black on White Magnetic Sign, \$45, plus \$1.31 for Colorado State Tax, Shipping Included

\*\*\*\*\*

Name: \_\_\_\_\_

Address: \_\_\_\_\_

City: \_\_\_\_\_, CO      ZIP: \_\_\_\_\_

Number of metal signs \_\_\_\_\_

Number of magnetic signs: \_\_\_\_\_

Amount Enclosed: \$ \_\_\_\_\_

Make check payable to RMLA and mail to RMLA, Attention: Keith & Katy Wegner,  
17190 W. 57<sup>th</sup> Place, Golden, CO 80403-9231



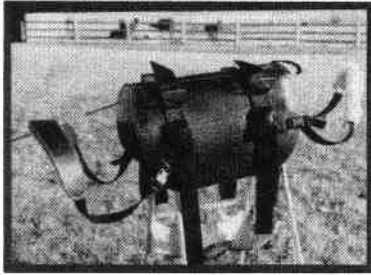


Dick & Linda Reichle  
2765 Hwy 91 N.  
Dillon, MT. 59725

(406) 683-2228  
Orders 888-846-5262  
Fax (406) 683-2121  
Email olliellamas@mcn.net

Catalog olliellamas.com

Largest Manufacturer of Llama Gear and Tack  
The chances are if we don't have it or can't make it, you don't need it!



Ollie Llama Pack Saddle  
OLPS401 - \$240.00



Ollie Llama Panniers  
OLP411 - \$200.00

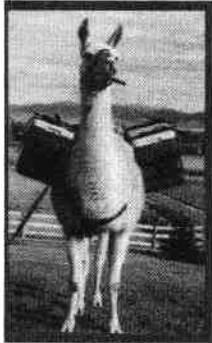
Single Top  
Pack  
TP409  
\$45.00  
Call For  
Colors



Rain Fly  
RF516 - \$25.00



Many colors  
Give us a call



Cooler System  
CS405 - \$80.00

Great for lunches and picnics

NEW!!!!!!!



Beginner's Pack Saddle  
BPS465 \$165.00

This is a starting pack or can be  
used in all ALSA Shows

NEW!!!!!!!



Cross Halter  
CR512 - \$12.50



Ring Halter  
RH513 \$9.50



TOS703 - \$4.50

Buy 5 or more and get 20% off

STALL MATS give us a call

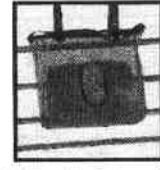


Baby Blanket  
With Thinsulate  
BB701 - \$ 28.50

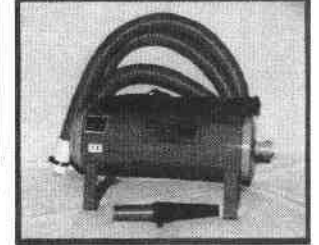
Show Cover  
SC723 - \$35.00



Heiniger Shears  
HLAS298  
\$289.00  
Blade Guides  
\$7.50



Mesh Feed  
Bag  
MFB719  
\$25.00



Circuiter II  
CII790 - \$288.00



Safari Brushes



Baby Sling  
BB701 - \$12.50



Dutch  
Ovens  
12" \$52.00  
10" \$35.00



Poop ScoopW/Rake  
\$20.00



Bale Bag  
BB718 - \$65.00  
Call us for colors or  
for Ranch Colors

Books  
Caring for Llamas & Alpacas - \$23.95  
Llamas on the Trail - \$15.00  
First Aid for Llamas & Alpacas - \$19.95  
Packing with Llamas - \$11.95  
Spinning Llama & Alpaca Wool - \$12.00  
Llama & Alpaca Neonatal Care - \$24.95  
Many others including children's books

EARS - \$9.50



Magic Shears \$16.50  
Serrated Shears \$21.95



## **THE CHEYENNE MINI-CONFERENCE: FIBER AND PACKING**

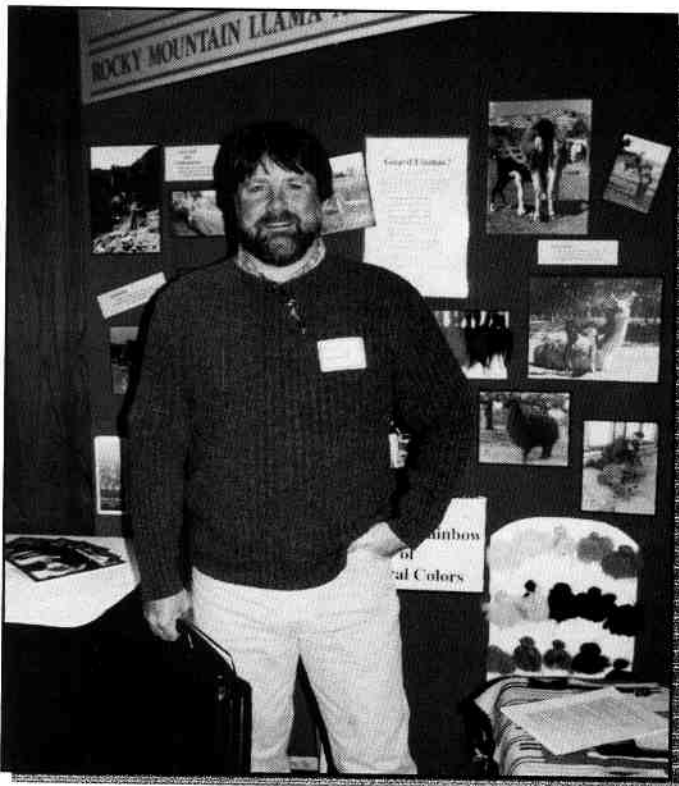
**By: Robert and Diane Walker Tompkins**  
Prairie Wind Llamas,  
Cheyenne, WY



*Conference Chairs: Rob and Diane Tompkins*

The first RMLA mini-conference of the new millennium was held on Saturday, March 31, 2001 at the Little America Hotel in Cheyenne, Wyoming. Nearly fifty people in attendance heard informative presentations and swapped alpaca and llama information.

The morning fiber presentation was done by Karen Kinyon of Double K Diamond Llamas in Fort Collins, Colorado. The afternoon packing presentation was done by Scott Woodruff of Lander Llama Company in Lander, Wyoming. Both presenters work full time in their given fields of expertise. The presentations were very informative. There was a free exchange of questions and answers with the presenters in a relaxed environment.



*Speaker: Scott Woodruff*

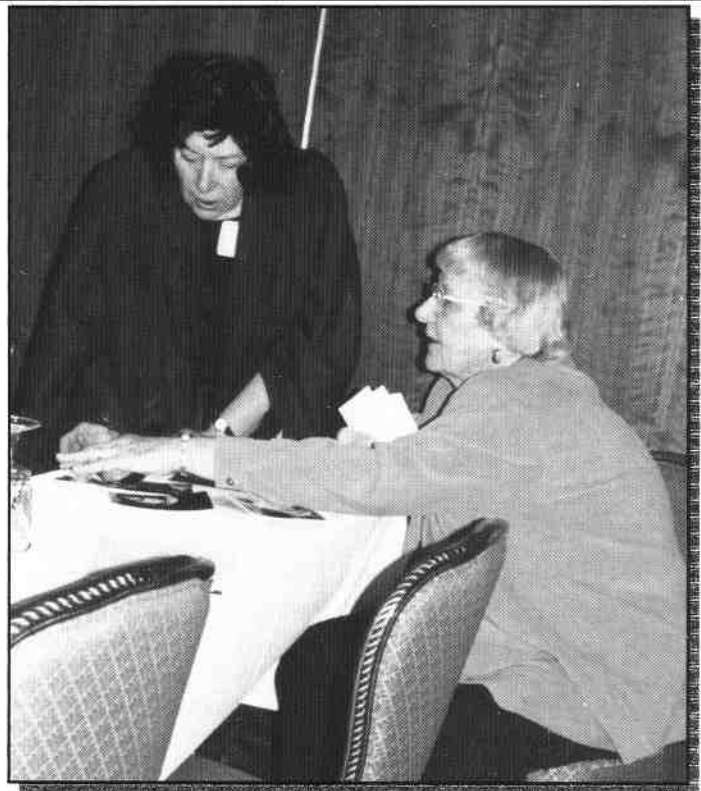


*Speaker: Karen Kinyon*

It was our pleasure to be the local hosts for this event. We are pleased that so many were able to attend and share this informative and fun day with us in sunny Cheyenne. We feel that we gave RMLA members, and prospective members, a heck of a deal for the \$15.00 conference fee per person. But, don't take our word for it, ask around.

**Lastly, we close with this challenge.** Consider hosting a RMLA sponsored mini-conference in your area. One-day mini-conferences are a good way to reach out to the alpaca and llama communities in your immediate area. You can learn a lot and still make it home in time for feeding!

*Robert and Diane can be reached at:  
 pwillamas@juno.com*



*RMLA's first Life Member: Betty Robertson with RMLA Charter Member Ellen Schreiner*



*Charter RMLA Member: Bobra Goldsmith*

### ***MORE FROM CSU ON LIVESTOCK HANDLER SAFETY ...***

To reduce transportation stress: provide good footing (sand or bedding on the trailer floor), avoid rough roads, travel early in the morning or later at night on hot days to reduce heat stress, provide a blanket or side boards if excessively cold or ventilation if hot, and avoid heavy traffic when possible.

Make sure the trailer is in good working condition and good repair (check brakes, lights and turn signals). Make sure the trailer has adequate suspension and stabilizer bars, and use good driving techniques (slow starts and stops, easy corners). Train (animals) to load, ride and unload well in advance of the trip. Transport animals with a familiar companion to reduce stress.

More from CSU elsewhere in this *Journal*

**FAIRPLAY LLAMA PACK  
RACE/WALK—  
A NOVICE'S PERSPECTIVE  
(OR, STILL WET BEHIND THE EARS — AND  
EVERYWHERE ELSE)**

**BY: BRENDA VANCE,**  
SPLIT ROCK LLAMAS,  
FLORISSANT, CO

My husband, Jim, my daughter, Jackie, and I participated in the annual Fairplay Pack Race/Walk in July, 2000. Jim ran the race with our experienced pack llama, Nimbus. Jackie and I decided to walk the race. We walked the race in 1999, but went around the deep stream crossings because Jackie was so small I was afraid she might be swept away by the fast-moving water. At the 2000 Walk,

we decided to give all the water crossings a try. This year, they tied ropes upstream at the deeper crossings so you could grab hold if needed. They also had more "spotters" at the stream to assist in case someone got into trouble.

In 1999, I took our yearling llama, Willie B. Goode. He made the shallower stream crossings without much trouble. Of course, he was much smaller then and not as confident, so I could almost drag him across and once our other llamas went across, he quickly splashed across the stream to join them.

In 2000, I took Willie again, who was this time a much larger two-year-old. Willie is a very intelligent and willing llama, but he needs to have time and space to think about

## In-Vest

in a custom keepsake

In this custom keepsake Cheri at PaxKnits used the cria fleece of "Chocolate Truffles". The scalloped edging is a type of Peruvian Knitting which Cheri learned while visiting Peru with her Fiber Artisan group in 2000. Cheri can be reached at her studio at 303-777-4370 or [PaxKnits@yahoo.com](mailto:PaxKnits@yahoo.com)



what he is being asked to do. If I attempt to pull hard on the lead rope, he will plant all four feet and refuse to budge. Normally, I just lead him to the obstacle and allow him time and plenty of lead rope to observe and think about the obstacle. Usually, he will take a look at the obstacle, decide it looks harmless enough, and follow me wherever I go. However, we had not worked on water obstacles since the 1999 Fairplay Llama Pack Race/Walk.

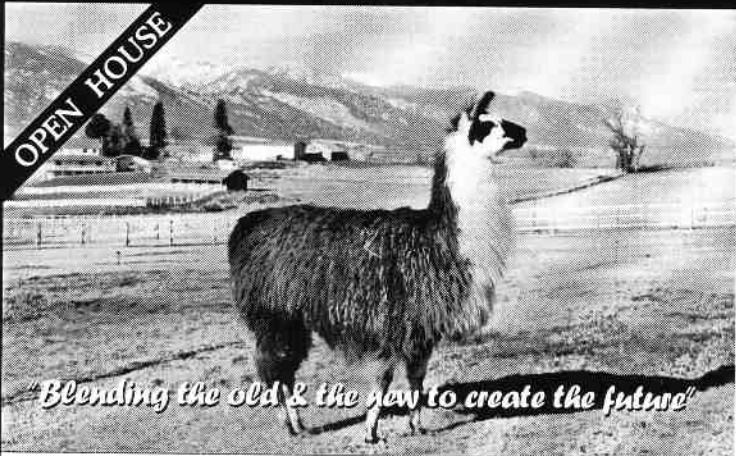
We got to the first stream crossing and Jackie crossed over first with her bomb-proof llama, Black Jack. I waded a few feet into the stream until I got to the end of the lead rope and turned to see if Willie was following me or still just thinking about it. I turned just in time to see a flying white blur (the llama), who landed right on top of me, sending us both diving into the ice-cold, rushing stream!

Fortunately, the "spotters" were already in the stream waiting to assist unfortunate people who decided (willingly or not) to go swimming.

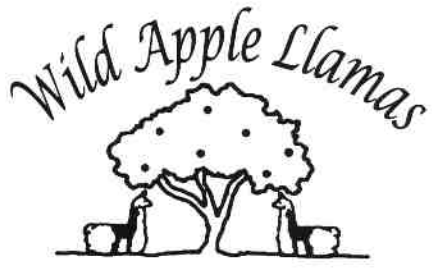
Time seemed to stand still or move at a crawl in those moments. I remember thinking so many things: I remembered our friend Ann Bruhn who had fallen in the water the year before and was swept downstream and lost her glasses, so I thought, "Oh great, I'm going to lose my contacts and be blind for the weekend!" Then Roger Miller started yelling, "Let go of your llama, I have him." I thought, "Let go of him?" Are you crazy? He's the only thing keeping me from going down this stream on a rafting trip — without the raft. No way am I letting go of my lifeline!" Then, someone grabbed me under the arms and pulled me to my feet. There really are angels among us! As

*(Continued on page 70)*

## VISITING MONTANA THIS SUMMER?



*Stop by and share llama kisses  
with our small, carefully selected herd  
of Old and New South American llamas.*



**WYATT & DAWN MOORE**  
 1446 Wild Apple Ln • Corvallis, MT 59828  
 406-961-4940  
 wdapllama@aol.com  
[www.llamaweb.com/west/wildapple](http://www.llamaweb.com/west/wildapple)

We are hosting an  
**OPEN HOUSE**  
 JUNE 8th & 9th  
 Including other fine llama breeders

We're just 45 minutes south of Missoula and 5 miles east of the picturesque town of Corvallis in the beautiful Bitterroot Valley.



**COFFEE'S ALWAYS READY!**  
*Call for directions.*

(Continued from page 69)

I splashed out of the stream, I thought, "Ouch -- that's going to leave a mark." My upper arm where the llama had crashed into me was already dark red and throbbing. The rest of me was very wet and very cold. I was also very embarrassed when I realized I was most likely to be this year's recipient of the annual LOCC Snorkel Award, presented to the person who "made the biggest splash", so to speak, in the stream.

I had to make a choice: chicken out and turn around to go back right away or suck it up and keep on trekking. I saw a blind woman do the entire walk in 1999 and there was no way I was going to quit because I was cold, wet, and bruised. I decided to finish the walk. Of course, I didn't make the same mistake again at stream crossings. I stepped into the water, kept the lead rope shorter, and got out of the way. Willie (now nicknamed Pegasus) continued to attempt flying across the stream. Apparently, he thinks he can jump much farther than he actually can, though he did manage to jump at least six feet from the bank on each attempt, just not quite far enough to completely cross the stream without getting wet.

We managed to finish the entire walk without further mishap or injury. Willie was uninjured. I had a large butterfly-shaped bruise (some said it looked just like a llama footprint) on my upper arm, which eventually healed just fine. I think Roger Miller still gets a chuckle when he thinks about the look on my face as I went under the water.

Cold, wet and bruised aside, we still had fun on the walk. The companionship was great, the weather was fabulous, and the exercise stimulating. I will continue to attend the Fairplay event in the future, although I will work a lot more with my llamas on stream and water crossings prior to doing the walk. **I also look forward to passing the snorkel to the recipient of the 2001 LOCC Snorkel Award. See you in Fairplay!**

## NOTICE

**Your fellow llama owners need your help!  
And, you can possibly help yourself!!**

### How?

Everyone in the U.S. needs to call, write, e-mail, and talk to their U.S. Senators and Representative

Here is why.

The U.S.D.A., through the Farm Service Agency (FSA) this past year by means of Public Law 106-387, appropriated funds to provide assistance to ELIGIBLE livestock owners who suffered qualifying 2000 feed losses because of natural disaster conditions. To receive benefits, an ELIGIBLE livestock producer must have grazing loss for three consecutive months.

ELIGIBLE livestock include animals used commercially for human food OR kept for the help in production of food OR fiber on the owner's farm. The funds are to be used to help with the higher cost of feed for the ELIGIBLE livestock.

Now, here's the key word: ELIGIBLE. Lamas ARE NOT ELIGIBLE! Reindeer ARE, llamas are NOT! The U.S.D.A. says llamas are not used for fiber production or are not used in the help in the production of other animals used for food or fiber such as guard animals with sheep. According to the FSA, the only way to change this policy is to do it through YOUR U.S.

Senators or Representative.

This is where you, as a llama owner, come in. Do your part now! Tell them llamas ARE used for fiber production and kept for the production of other animals used for food and fiber.

This change is needed now not only for counties with drought, but what if we in the U.S. have problems like England with FMD. Llamas may not be ELIGIBLE for any pay-back program! Think about it, then WRITE, CALL, E-Mail, and TALK to your representatives NOW! To get phone number and address, call your County Clerk's office. Together, we will make a change.

Contributed by Dee Goodman, Past President  
970.345.2927



## Wyoming Just Got More Exciting! 4 Llama Shows in 3 Weekends

*1 Grooming ~ 1 Health Certificate  
1 Easy-Going, Down-Home, Good Time*

All 4 shows are ALSA sanctioned, bring you a different judge for each show, can make you eligible for those valuable ALSA points, might get you qualified for the Regional or National Championships, and best of all give you a chance for a taste of those wide open spaces away from the summer crowds, heat and humidity.

*July 28 and 29, 2001*

(Saturday and Sunday)



### The Big Horn Rendezvous - Buffalo, Wyoming

Featuring ring-based halter and performance classes, a full youth show including sub-juniors on Saturday, and on Sunday, some of the best natural obstacle performance classes anywhere, right next door in Story, Wyoming. Pack up your lawn chair, brush up on your trail manners, and contact Barbara Coffman-Flinn for entry forms and more information.

Telephone: 307.683.2548; email [cloudpeak@wyoming.com](mailto:cloudpeak@wyoming.com)

Judges: Bruce Connelly, Halter - Gayle Woodsum, Performance

*August 4 and 5, 2001*

(Saturday and Sunday)



### The Laramie County Fair - Cheyenne, Wyoming

Come to the beaches of Cheyenne. In addition to halter and performance classes, this show will also be bringing you a full youth show and fiber classes. For entry forms and information on treating your llama to this famous rodeo town, contact Robert Tompkins.

Telephone: 307.635.2168; email [pwillamas@juno.com](mailto:pwillamas@juno.com)

Judges: Harold Herbold, Show Ring Events - Karen Kinyon, Fleece

*August 11 and 12, 2001*

(Saturday and Sunday)



### The Wyoming State Fair - Douglas, Wyoming

Just one little weekend will bring you two shows, double the ribbons, double the points, and double the fun. Wyoming has a way of growing on you - from the competition of the ring to the delight of costume classes and pleasure driving, let us entertain you. For fairbooks and more information, contact Julie Heggie or Gayle Woodsum.

Telephone: 307.721.2919; email [dbjlllamas@aol.com](mailto:dbjlllamas@aol.com)

Judges: Patti Fischer, Saturday - Darlene Vaughan, Sunday

# Trout Creek Llamas

BOLIVIAN, CHILEAN, CANADIAN  
AND DOMESTIC BLOODLINES

YOUR TYPE OF ANIMAL –  
FROM PET TO SHOW QUALITY

GUARD ANIMALS

MANAGEABLE AND GENTLE  
DISPOSITIONS

CORRECT CONFORMATIONS

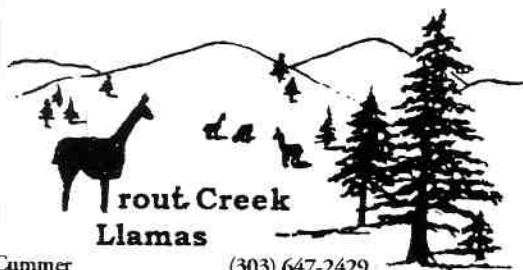
VISITORS ALWAYS WELCOME!



*AM I CUTE OR WHAT?*

BOARDING  
IN THE  
COOL ROCKIES

COMFORTABLE  
ACCOMODATIONS  
FOR YOUR  
MALES AND FEMALES



Jan Cummer (303) 647-2429  
P.O. Box 6848 • Woodland Park • CO 80866  
rjcummer@interfold.com



## *PLEASE HELP US WELCOME OUR NEW MEMBERS!*

*Contact new members near you and invite them  
to an RMLA event or a get-together for fun*

---

**Joani Artiaga**

Just Joan's Studio  
22 Palomar Drive  
Belan NM 87002-4824  
(505) 864-6411 Fax (505) 864-6411  
justjoan98@aol.com

**Kevin Ensley Karen Ensley**

Kushland Alpaca Ranch N Fiber Arts  
7205 W. County Road 12  
Loveland CO 80537-8315  
(970) 532-0639 Fax (970) 532-0639  
kushland@gateway.net

**Ellyn R. Atherton Rodney C. Atherton**

Llama Jama  
12863 W. 87th Avenue  
Arvada CO 80005-1111  
(303) 423-1402  
rodellyna@msn.com

**Bill Feick Helen Feick**

CTERS Llamas  
PO Box 131  
Geronimo TX 78115-0131  
(830) 379-3949 Fax (830) 303-2292  
cters@the-cia.net

**Chris Biggs Julia Biggs**

Biggs Family Farm  
12565 S. Mesa View Road  
Larkspur CO 80118-6104  
(303) 814-8493 Fax (303) 663-8019  
biggsjna@aol.com

**Robin Fickle Rich Fickle**

Celebration Llamas, LLC  
PO Box 146  
Sedalia CO 80135-0146  
(303) 814-8199

**Hannah-Leigh Bull**

Llama Dear Ranch  
PO Box 305  
Medanales NM 87548-0305  
(505) 685-9416 Fax (505) 685-4197  
hlbull@cybermesa.com

**Ray Fuller Diane Cannon**

1451 E. 141 Avenue  
Brighton CO 80602-6383  
(303) 280-0388  
fullerray@aol.com

**Jennifer Camp (Junior)**

1435 Chartwell View  
Colorado Springs CO 80906-6718  
(719) 633-0517 Fax (719) 448-0318  
jnefo@hotmail.com

**Christopher Goebel (Junior)**

Llamarado  
PO Box 935  
Westcliffe CO 81252-0935  
(719) 783-2680  
cj@coland.com

**Dorothy Collins Gordon (Pete) Collins**

59450 E County Road 30  
Strasburg CO 80136-8021  
(303) 622-6425  
cactarosa@aol.com

**Tony Gross Rachel Gross**

Orion Hunting  
10430 N. Chatfield Drive  
Littleton CO 80125-9606  
(303) 791-8640  
grosstm@msn.com

*(Continued on page 75)*

(Continued from page 73)

**Linda Hayes**

Llama Things/Llama Linda Ranch  
1459 County Road 102  
Carbondale CO 81623-9627  
(800) 552-6213  
linda@llamathings.com  
www.llamathings.com

**Lou Haynes Jim Haynes**

777 Copperdale Lane  
Golden CO 80403-9784  
(303) 642-0418  
auntielouccc@yahoo.com

**Will Hefley Sheri Hefley**

Ledgestone Llamas  
489 McKinney Creek Drive  
Blanco TX 78606-5186  
(830) 833-4457 Fax (830) 833-5735  
ldgstn@moment.net  
www.moment.net/~ldgstn

**Mike Hopkins Jayne Hopkins**

Triple H Llamas Arizona  
HC 31-Box 213  
Happyjack AZ 86024-9701  
(520) 477-2404  
thla@theriver.com

**Paris Johnson (Junior)**

J.R. Llamas  
6055 Renneberger Road  
Falcon CO 80831-7634  
(719) 683-5345  
paris6055@aol.com

**Ulla Kauffman Jim Kauffman**

637 Rider Ridge Drive  
Longmont CO 80501-4001  
(303) 682-0106 Fax (303) 682-0120  
ukauffman@aol.com

**Linda Kutscher**

Snowcrest Llamas  
1100 S County Road 21  
Berthoud CO 80513-8408  
(970) 532-5584  
llkutscher@aol.com

**Erik Lloyd Penny Lloyd**

Sheep Camp Wool Mill - Jehovah-jireh  
PO Box 119  
Molina CO 81646-0119  
(970) 487-3295  
sheepcampmill@aol.com

**Joyce B. Milne Robert Nickerson**

PO Box 3314  
Needles CA 92363-2055  
(760) 326-2265

**Brad Neuman**

377 Adams Street #5  
Dorchester MA 02122-1242  
(613) 288-9450  
brad@brad.org

**Lisa Norris**

2240 Big Bear Circle  
Sedalia CO 80135-4410  
(303) 688-2200  
blmno@aol.com

**Betty O'Grady**

Killballeyowen Llama Ranch  
PO Box 44  
BonCarbo CO 81024-0044  
(719) 846-1771  
kbo@ria.net

**Kaitlyn Phipps (Junior)**

Linn's Llama Lland  
514A 29 3/8 Road  
Grand Junction CO 81504-5379  
(970) 263-4806  
elliemhipps@aol.com

**Bette Ritinger**

Double B R 78 Aspen Grove Court  
Nederland CO 80466-9636  
(303) 545-2187  
bbr438@aol.com

**Robert D. Robbins Jeanne M. Warren**

J.R. Llamas  
6055 Renneberger Road  
Falcon CO 80831-7634  
(719) 683-5345  
jrllamas@aol.com

**Sheala Roof Bob Roof**

Ram Power Farm  
390 Road 146  
Carpenter WY 82054-9688  
(307) 649-2402  
rampower@mindspring.com

**Paul Schwartz Karen Schwartz**

ChanTar Llamas  
69 Gallatin Drive  
Sheridan WY 82801-9500  
(307) 672-5144 Fax (307) 672-5144  
chantar@wavecom.net

**Jay Stinnett**

200 Sun Ridge Court  
Woodland Park CO 80863-9014  
(719) 687-6092 Fax (719) 687-6356  
stinnettj@msn.com

**Carol Talbott William B. Lee III**

Laughing Valley Ranch  
8516 W. 52nd Avenue  
Arvada CO 80002-3416  
(303) 422-2861  
caroltclaus@yahoo.com

**Bob Tesch Chris Tesch**

16727 Shavano Valley Road  
Montrose CO 81401-7905  
(970) 249-0522 Fax (970) 249-5387  
tesch@wic.net

**Jim Vance Brenda Vance**

Split Rock Ranch Llamas  
496 Wavelyn Ann Circle  
Florissant CO 80816-8814  
(719) 689-0553  
Jim.Vance@wcom.com  
[www.coloradollamas.com/split.htm](http://www.coloradollamas.com/split.htm)

**Monte Wegner Debbi Wegner**

Wild Heart Ranch  
PO Box 169  
Masonville CO 80541-0169  
(970) 407-9205  
wildhrt@oneimage.com

**Kory Woolsey Ann Woolsey**

2961 Woodland Park Road  
Grants Pass OR 97527-7116  
(541) 479-4740 Fax (541) 479-4740  
komit97@yahoo.com

**A VERY SPECIAL WELCOME TO NEW  
LIFE MEMBERS**

**Regis V. Thoma**

**Gloria J. Thoma**

Ja-Wil-Da  
121 Saint Joe Road  
Butler PA 16002-0074  
(714) 283-2339

**CHANGES**

**Address**

**Willie Steele**

**Marciadeen Steele**

Rocking S Llamas  
121 Melrose Avenue  
Pueblo CO 81004-1050  
(719) 544-3867

**Email Change**

**Gary W. Baugh and Jeri Aiello**

garywbaugh@yahoo.com

**Area Code Change**

**Patti Morgan (620) 442-4996**

Fax (620) 442-1590

**NEW Email**

**Deidre Baird (Junior)**

deidre1@att.net

**Ron Baird**

ronbaird@att.net

## LLAMAS AND KIDS IN THE PARK

**By: Jerry Dunn,**  
RMLA Vice President,  
Bear Track Farm,  
Golden, CO



**A** cold, damp spring day greeted these hearty llama and alpaca enthusiasts. The remainder of the interested hikers had to stay home due to snow, ice

and fog in their area. (photo 1)

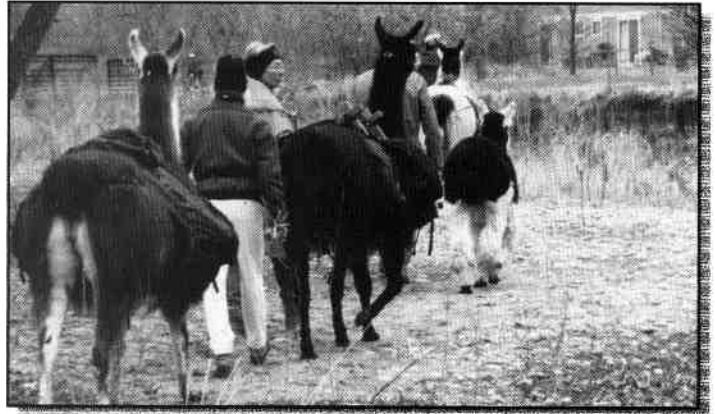
This small band of hikers roamed through the Wheat Ridge Greenbelt on a Saturday morning in March (photo 2). We saw foxes, a variety of ducks, nesting Canadian geese on Clear Creek and took time to visit a newly constructed beaver lodge and its surrounding dams made of mud and sticks. We encountered small jumps, low branches, and negotiated a few small stream crossing along the way.

Mike and his Grandmother Kathy were new to llamas and worked with them like old hands. Mike, who is 9 years old, learned how to load llamas, tie a quick release knot, and back a llama short stack out of a dead end. (photo 3)

Lunch was celebrated with lots of hot chocolate and hot apple cider. Even though the air was cold and damp, we were still able to laugh and play with our animals and new friends.

Hope to see you all next year.

*Jerry can be reached at:*  
[beartrak@gte.net](mailto:beartrak@gte.net)



### Rocky Mountain Llamas

See the best llama equipment online:  
<http://www.rockymtllamas.com>

*New Items! All pictures in color.*

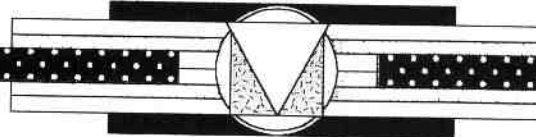
Halters & Leads for every llama activity  
Packing Gear ~ Training Videos & Books ~ Gifts  
Grooming Supplies ~ Driving Harness & Carts  
Show Sheets, Warm Coats & Raincoats  
Special farm items to make life easier

Phone/fax: 303-530-5575 e-mail: [questions@rockymtllamas.com](mailto:questions@rockymtllamas.com)

Bobra Goldsmith ~ 7202 N. 45th St. Longmont, CO 80503



## APISHAPA RIVER RANCH LLAMAS



SHALOM EL RICO  
(Son of Rico De Bolivia)

HE'S GOT IT ALL!

DON'T YOU WANT SOME?

**2000 WAS HIS FIRST SHOWING YEAR:**

GRAND CHAMPION - DENVER NATIONAL STOCK SHOW, DENVER, COLORADO  
GRAND CHAMPION - SPRING LOCC, COLORADO SPRINGS, COLORADO  
ULTIMATE GRAND CHAMPION - SPRING LOCC, COLORADO SPRINGS, COLORADO  
GRAND CHAMPION - ESTES PARK WOOL MARKET, COLORADO  
RESERVE GRAND CHAMPION - FALL LOCC, COLORADO SPRINGS, COLORADO  
GRAND CHAMPION - ALSA RMLA REGIONAL, DENVER, COLORADO  
4TH IN THE NATION - GRAND NATIONAL CHAMPIONSHIP, COLUMBIA, MO.

**NOW IN 2001 HE'S DONE IT AGAIN:**

FIRST PLACE - FT. WORTH STOCK SHOW, FT. WORTH, TEXAS  
GRAND CHAMPION - SAN ANTONIO STOCK SHOW, SAN ANTONIO, TEXAS

WE HAVE A FEW OF HIS BABIES FOR SALE.  
LIMITED BREEDINGS AVAILABLE

*Bob & Chrs Ward  
24401 Cty Rd 44, P. O. Box 7  
Gulnare, Colorado 81042  
(719)941-4273/wardsllamas@rml.net*

## CHRISTMAS LLAMA VISIT

By: *Cliff Harding,*  
Harding Llama Ranch,  
Hotchkiss, CO

On December 21, 2000, Natal, my P.R. llama, and I were invited to share in the spirit of the Holiday Season at Paonia



Community Care Center. A full day of fun events were planned, including horse-drawn rides around the facility, Christmas choirs, lots of treats, and room-to-room visit by Natal.

Natal was dressed from top to bottom. His Santa hat had cut out holes to expose his beautiful ears. His pack saddle was covered with greenery and lights, and large red stockings filled with presents. Also included were bells and bows! He put on his best behavior, allowing the nurses to take his lead and present him to residents who were eagerly awaiting his visit.

Expressions from disbelief to excitement were noticed on the residents' faces. Natal greeted each individual as a special person, allowing touching and gentle blowing kisses. My mother of 97 years, who has been a resident of the Center for the past six years, took the llama in stride as she has enjoyed the llamas I often share with the community and nursing home.

Cliff can be reached at:  
[hrlhard@aol.com](mailto:hrlhard@aol.com)

## Clean Water on the Go!

the PiMag Ionic Filtration Water Bottle  
by Nikken

A personal, 32-oz. water bottle with its own high-tech, reliable microfiltration system. Easy to use. Just fill the bottle from any water source, screw on the top (to which the filter is attached), and squeeze out guaranteed clean, safe, good tasting water – into your mouth or into a cup.

Filters E.coli, cryptosporidium, giardia, toxic chemicals, heavy metals, and chlorine.

Great for llama trekking, hiking, camping, fishing, paddling, travel, sports activities, emergency preparedness, alternative to bottled water.

Filter is good for 800 bottles of water (200 gallons)

Bottle: \$59 + tax (\$4) + shipping (\$2.65) = \$65.65

To Order: Dale Pettigrew, Overland Trail Llamas,  
Independent Nikken Distributor  
168 Emerald Mtn. Ct., Livermore, CO 80536  
970.493.2335 or [dalepet@jymis.com](mailto:dalepet@jymis.com)

[rmla.com](http://rmla.com)

Service Directory

The entire directory can be viewed here.  
Find breeders, equipment, and so forth.



***SPOTS BEFORE YOUR  
EYES?????.....***



***YES, INDEED!!!!***

**LEDGESTONE'S JIM DANDY  
MULTI HALTER CHAMPION  
(A true black & white reverse appy!)**

**STANDING AT CARDINAL OAKS LLAMAS  
JUNE THRU SEPT. 2001**

**FOR MORE INFORMATION CONTACT**

**CARDINAL OAKS LLAMAS**

Jim & Jill Durham  
746 Ranger Station Rd.  
Florissant, CO 80816  
(719) 748-8073  
jillamaco@aol.com

**OR**

**LEDGESTONE LLAMAS**

Will & Sheri Hefley  
489 McKinney Creek Dr.  
Blanco, TX 78606  
(830) 833-4457  
ldgstn@moment.net  
www.moment.net/~ldgstn

## A NOTE FROM NEW MEMBERS

By: **Kevin Ensley,**

Kushland Alpaca Ranch N Fiber Arts,  
Loveland, CO



**H**ello Everyone! We are Kevin and Karen Ensley of Kushland Alpaca Ranch N Fiber Arts in Loveland, Colorado. This year, we decided to become members of RMLA after attending a

class sponsored by RMLA. The cost for membership classes, registrations, and other benefits give us a lot for the dollars we have to spend. People are helpful and friendly and, with this being an established organization, there is a lot to be learned from the knowledge and information available. Karen and I look forward to meeting new friends this year. Please come visit us or call and introduce yourself. Our telephone number is 970.532.0639

Falling in "love" with alpacas six years ago in Estes Park at the Wool Market was where it started for us. We are sure the Wool Market is the place where many of you

*We appreciate articles such as the one by Kevin Endsley — they help all of us RMLA members know one another and what it is we are doing with our creatures. Feel free to submit such articles, along with a photo of the author, to the editor. They will be published as space is available in the Journal.*

"fell in love". Linda and Fred Walker were the alpaca national conference chairs and gave us more information on Huacaya alpacas. We were not interested in the Suri alpacas, or so we thought. We have had 8 crias born here since then (this is just one of the best parts). Four have been female Suris, 2 male Suris, and 2 male Huacayas. We started with two juvenile females and two yearling males for breeding; now also the Great Pyrenees dogs and Himalayan cats provide us with nice fiber too! We process most all our own fiber and sell it in many forms; "on the hoof", sheared, combed, carded, and spun for between \$2 and \$12 an ounce. We also have knitted, woven, crocheted, and now, felted items, priced accordingly.

Kevin can be reached at:  
[kushland@gateway.net](mailto:kushland@gateway.net)



Llama Training  
Boarding included!

Daily training with you and your llama; weekly or monthly training with your llama and me.

Special clinics or camps for 4-H groups.

Call for more information.

Llamarado

Brianna Livengood

Westcliffe, CO

719-783-9238

E-mail: [briannallama@rmi.net](mailto:briannallama@rmi.net)



# TSX INDEPENDENCE

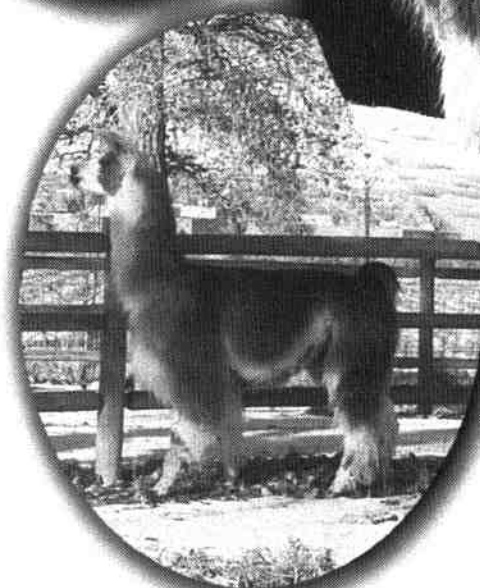
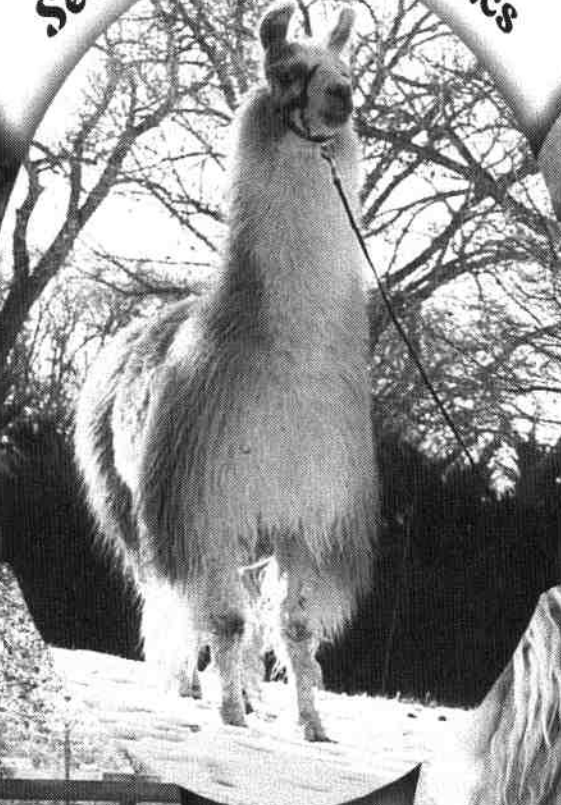
Firecracker X DDL Canta Libre

An Outstanding Top Flight &  
Chilean LeRoy Brown Grandson

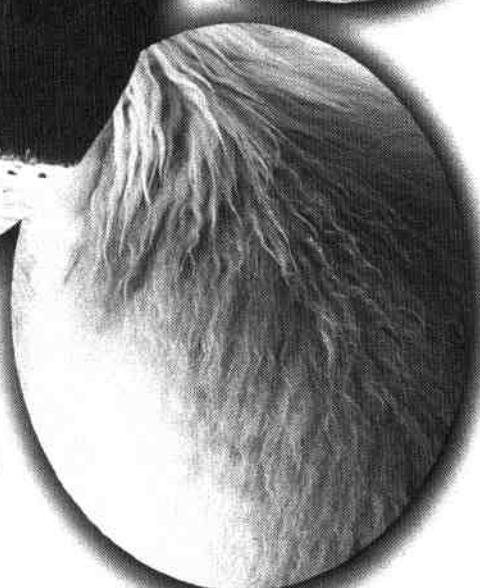
Wonderful Disposition

See the beauty of genetics

Silky, Silver, Luxurious Fiber



Terrific  
Conformation



Indy's conformation, looks and unique fiber made our decision to purchase him an easy one. His fantastic disposition is just one more gift he has to offer. We wanted him for our breeding programs.

How about you?

Robert & Jill Knuckles  
Tall Tail Ranch  
2570 A 1/2 Road  
Grand Junction, CO  
81503  
(970) 241-4112

e-mail: talltaillamas@bigplanet.com

A Limited Number of \$500  
Introductory Breedings Are Available

Larry & Deanna Lewellyn  
FootHills Llamas  
10715 W. Belleview Avenue  
Littleton, CO 80127  
(303) 979-4815  
e-mail: fhllamas@aol.com

## **THE CRIAS & CRITTERS 4H LLAMA CLUB**

**By: Rhonda Livengood, 4H Club Leader**  
Llamarado  
Westcliffe, Co.

On March 15, 2000, four first year 4H members approached me, and asked me if I would be interested in starting a llama 4H club. Two of the kids had shown our llamas previously in the sub-junior division at ALSA shows, the other two were new to 4H and ALSA. I told them we would have to ask our County extension Agent, Dean Oatman if he would allow us to do this, as llamas are not a recognized state 4H project. He gave us the green light, and told us the only thing we had to have to start a club was 5 interested kids. With the 4 young kids and Brianna, that gave us 5 members.

One of our first outings was to Stage Stop Llamas. I wanted the kids to be able to see the different fiber colors and wool lengths. The kids had never seen so many llamas in one place and, boy, were they excited! After the grand tour, we made a quick trip to Florissant for lunch, and then it was back to Jeff and Sally's to practice obstacles with some of their experienced males. The kids learned a lot that day, and Jeff and Sally were great for letting us have the run of the place. Thank you, guys!

In April, the parents and kids came to our house and built obstacles. We built a teeter-totter, and a table with a ramp on one side and stairs on the other side. It was a lot of fun, especially the painting! We ended the day with a pizza party.

Our next trip was to Kiowa in May for a Youth Clinic sponsored by Bill, Jan, and Sherry Adamcyk, and Dani Varela. ALSA Judge Barb Harris of Canon City taught the clinic and it was a full day of learning. One of our parents volunteered to take all the kids and any of their parents who wanted to

go, as well as everyone's covered dish for the potluck. What a brave woman! We all piled into the van and off we went. The morning portion of the clinic was devoted to going over the handouts Barb had prepared for each participant. After a great lunch complete with hot dogs, the kids were ready to work. The Adamcyks provided llamas in different stages of training for the kids to work with. Each participant got the chance to work with numerous animals until it was time to go home. If you thought with such a busy day the van ride home would have been a quite one, you were wrong! There was non-stop chatter most of the way, and believe me, it's a long way to Westcliffe!

The end of May we hauled the llamas we would be using for the year back to Jeff and Sally's to practice on their obstacles. The club members had decided to enter the LOCC Spring Show the first part of June, and thought it would be a good idea to get their llamas to an unfamiliar place for some practice. We had another day of work and fun, came home tired but fulfilled.

May was a busy month. We participated in the Memorial Day Parade in Westcliffe. We had 7 kids, 7 adults, and 7 llamas. We took younger siblings with us in the parade, so we had a bigger group. The llamas were a big hit, as usual.

In June, we went to the LOCC show in Colorado Springs. All five 4H members competed and we had some sub-junior siblings who also competed. Everyone won some ribbons and had a lot of fun. This was some of the kids' first ALSA show, and for those for whom it wasn't, it was their first show as juniors.

Our 4H show was in July and all five members competed in showmanship and obstacle. We actually had a crowd of people come and watch the show. When it was over, we invited the audience to take the llamas through the obstacles. We had lots of people get up close and personal with the llamas that day!

During August, some of the members went to the Boulder County Fair in Longmont and the Laramie County Fair in Cheyenne, Wyoming. We came home with more ribbons from both shows.

We went to the Colorado State Fair in September for demonstration purposes, the LOCC Fall Classic in Colorado Springs, and our club decided to host an ALSA youth show in Westcliffe. All the parents helped 110% and the show would not have been a success without them. We gave ribbons to 7th place, and etched glass trophies. We had 15 competitors, which we thought was pretty good for our first show. We had so much fun that we decided to hold a show again this

year. It will be on September 15th, starting at 10:00 a.m.

In October, the whole club headed for Denver for the Regionals. All five members qualified for Regionals, and four competed. At Regionals, we qualified four for Nationals. It was very exciting and quite an accomplishment for our first year. Of the four who qualified at Regionals to go on to Nationals, three competed at the National show in Missouri. Not bad for a first year!

We decided in December to be in the Christmas Parade of Lights here in Westcliffe. We had members, parents, younger siblings, and friends helping us get to the beginning of the

*(Continued on page 85)*

# Recipe For The New Millennium

North American:  
Size and Spirit

Chilean:  
Stretch and Flash

Bolivian:  
Substance and Calm

Peruvian:  
Athleticism and Style

And Now Argentine:  
Elegance, Sweetness,  
Capacity and Fiber



Llamas on the high mountain plains of Laramie, Wyoming

## Double J Llamas

P.O. Box 612 • Laramie • Wyoming • 82073 • 307.721.2919 • [dbljlamas@aol.com](mailto:dbljlamas@aol.com) • [www.llamasatdblj.com](http://www.llamasatdblj.com)

Champion lineage,  
healthy breeders,  
solid conformation,  
outcrossed genetics  
from a half dozen  
new imports,  
plus lots of loving  
interest and care.

~  
We're putting it  
all together and  
coming up with  
something special.

# *Keep An Eye On Us - We're Cookin'!*

rmla.com

Click on Youth

A special site just for Youth members

rmla.com

Click on Events for the most up-to-date information about RMLA events!



## Rocky Mountain Llamas

*Our llamas are winners in the ring and on the trail.*

**What makes winners? Good breeding and good training.**

**We have multiple home-bred halter champions  
and numerous performance championships!**



### **Rocky Mountain Rowdy - 2 yrs. old**

(Champion Greyfeather x Jigsaw)

**Gr. Champ Light-wooled Male - Estes 2000**

### **Rocky Mountain Ninja**

(Champion Jester x Chippewa)

**(Just turned three)**

**Regional Champ Medium Wool**

**1st Novice Pack - NWS**

**1st Open pack - Sneakers Show**

**2nd Advaced Obstacle - and**

**2nd Novice PR -Estes 2000**



### **Rocky Mountain High Spirits**

(Champion Jester x Cherokee)

**Res. Champ Light woolled Male - Estes 2000**

**1st Novice Obstacle - Estes 1999**

**1st Novice Pack Llama - Estes 2000**

**Improve your skills at our training clinics:**

**Basic Training & Handling**

**Pack Training and Practice**

**Showing in Halter & Performance**

**Driving to Cart**

**Catalog & info- <http://www.rockymtllamas.com>**

**Contact us for clinic outlines and dates. Next Basic Clinic: July 14, 2001**

**Bobra Goldsmith ~ 7202 N. 45th Street, Longmont, Colorado 80503 ~ (303) 530-5575**

(Continued from page 83)

parade route. The theme of the parade was a Colorado Country Christmas, so each llama was wearing a red or green felt blanket outlined in lights and a felt cowboy boot on the side. The llamas also wore antlers and red bandanas on their necks. We had a "Rudolph" llama leading the parade complete with blinking red nose, 8 llamas 2 by 2 behind him, and a Santa llama with huge stockings filled with toys. Each llama had a child and an adult leading him or her, so we made quite an impression coming down the street. Everyone was yelling and cheering, "Look at the LLAMAS!" After the parade, we had sloppy joes and hot chocolate and waited for the call to come to see if we had been awarded a prize. When the call didn't come in a timely fashion, Brianna couldn't stand it anymore and she called the event organizers. They told her we had won first prize and \$75.00! What a nice surprise!

We hold meetings year around on the 1st Tuesday of the month. We do a worksheet and demonstrations at each meeting. We also talk about good sportsmanship and how to be a good winner as well as a good loser. We are still working on this.

This year, I was asked if I would allow our llama club to incorporate three market goat projects, as well as a discovery program called Cloverbuds for five to seven year olds. Soooo, my one-year old club with five members has grown to 14 members for this year. We are having a great time and can hardly wait for the weather to warm up, so we can start practicing with our llamas. If anyone is interested in starting a llama 4H club in their area, I would be happy to help you. We hope this year is as good to us as last year was!

*Rhonda can be reached at:  
Briannallama@rmi.net*

Well, this has been a condensed version of our first year. What a whirlwind!



***Field Guide to Plants Poisonous to Livestock: Western U.S.***  
 By Shirley A. Weathers


Every year, poisonous plants cause death, temporary and chronic pain and illness, abortions, decreased productivity, and birth defects involving hundreds of thousands of livestock. Economic losses amount to hundreds of millions of dollars. Experts agree that many occasions of plant poisoning are preventable.

Learn quickly what you need to know. *Field Guide to Plants Poisonous to Livestock: Western U.S.* compiles in over 240 pages key information in lay language to help livestock owners:

- identify and learn about over 100 toxic plants found west of the Mississippi River;
- consider animal, pasture, and range management strategies;
- spot symptoms of potential poisoning;
- respond if poisoning takes place.



To order, please send \$14.95 per book, plus \$3.00 shipping for the first book and \$1.00 shipping for each additional book (Utah residents add 6.00% sales tax to book price) to Rosebud Press and your ...


  
**Rosebud Press**  
**P. O. Box 270090**  
**Fruitland, UT 84027**

Name \_\_\_\_\_  
 Address \_\_\_\_\_  
 City \_\_\_\_\_ State \_\_\_\_\_ Zip \_\_\_\_\_

Visit [www.ubtanet.com/~wrw/](http://www.ubtanet.com/~wrw/) to see sample pages from the book.

**CLASSIFIED ADS – MAY 2001**

**Llama Herd Reduction Sale** – Beautiful heavy wool males & females, all colors, 1/2 to 3/4 Chileans and 1/2 to 3/4 Bolivians, great bloodlines – males \$250-\$350; females \$500-\$700. Free rebreeding with any female purchase. Moonstar Llamas, Guffey, CO – Rodney Bryan. 719-689-9760. (11/01)

**Excellent Prices** – on quality llamas. Herd reduction sale. Weanlings to adults. Females bred to MGF Nottingham (Richochet son) and Federally (Papa Noel son). Pets to show quality; several with ALSA ROM points. Prices starting at \$300. Multiple purchase discount. Llamarge, Mary Beth Hartsough. 970-785-2463. e-mail: Llamarge1@aolcom.

**Llamas of Central Colorado** – 20+ ranches represented with over 500 llamas to choose from. Sales, Stud Service, Fiber, Boarding, Training, Packing & 4H. Call Mary for free brochures and map of participating ranches or visit our website at [www.coloradollamas.com](http://www.coloradollamas.com) 719-687-1423.

**Female Llama Sale** – We are reducing the number of females in our herd. Starting at \$500; discounts for multiple purchases. Weanlings to mature proven breeders. Long, medium and short wool all with excellent conformation. Also, a few studs available. Antero Llamas, 11100 CR 194, Salida, CO 719-539-6405. [jim@anterollamas.com](mailto:jim@anterollamas.com).

**Vinyl Fence** – attractive, safe, virtually maintenance free. Lasts forever. We offer Heritage, a premium brand, at very favorable prices. Ranch rail in 3-rail or 4-rail and privacy, pool and yard styles. For information and estimates, call 888-771-3276 or fax specifications to 616-698-0800. [www.heritagevinylfenceusa.com](http://www.heritagevinylfenceusa.com). (2/02)

**Llamas**— 8 breeding suri type males—\$1,000—\$2,500; Year 2000 offspring—males start at \$150, females at \$300; Some Argentine type kids in 2000. Also raise wooly type miniature donkeys—all colors. Jerry McRoberts, Western Nebraska, 308.884.2371

**Journal of the RMLA—Advertising Information—effective August 2000**

- **All art should be camera ready.** Ad design cost is \$30 per hour, 1 hour minimum. Contact Marilyn Arnold at 303.841.5126 for more information.
- Black and white photographs are preferred. Electronic images should be on disk.
- This publication is printed in black and white. Line screen is 115 lines/inch.
- Each May, a promotional issue is published. The outside covers and centerfold advertisement are printed with a base color determined by the RMLA Board of Directors. Additional copies of this edition are printed for distribution to the public at llama and alpaca events.
- Mail all advertising materials to Marilyn Arnold, 11483 E. Ponderosa Lane, Franktown, Colorado 80116-9319. Include check payable to RMLA for the amount of the ad plus estimated design costs for art that is not camera-ready. **Full payment must accompany all advertising submitted.**

**Advertising Deadlines:**

**June 15, September 15, December 15, March 15**

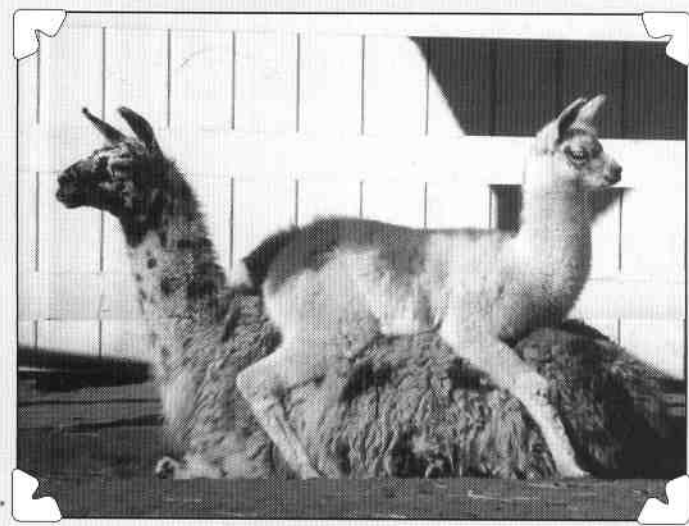
**ADVERTISING RATES**

All rates per issue	RMLA Member	RMLA Member	Non-Member	Non-Member
Ad sizes	1-2 issues	Same ad 3 or more issues	1-2 issues	Same ad 3 or more issues
Business Card	\$12	\$12	\$18	\$18
1/4 page	\$24	\$21.60	\$36	\$32.40
1/2 page	\$48	\$43.20	\$72	\$64.80
2/3 page	\$66	\$59.40	\$99	\$89.10
Back Cover	\$60	\$53.80	\$90	\$81
Full page	\$78	\$70.20	\$117	\$105.30
Inside cover Front or back	\$96	\$86.40	\$144	\$129.60

**Promotional Issue Rates: Same color as Journal cover**

Full page per page (Centerfold)	\$162	Different Color Add \$85 color change charge	\$243	Different color Add \$85 color change charge
<b>Back Cover</b>	\$130		\$207	

Classified Ad rates: Members \$5 for up to 50 words per ad. Non-members \$10 for up to 50 words per ad. Additional words priced at \$0.15 for each word over 50



Dante's Purgatorio

## The Boys of the Broken Windmill

Broken Windmill  
Ranch



Spellbound's Merlin



Broken Windmill Sundowner and Traveler's Highwaymay  
with proud owner Teri Baird of Broken Windmill Ranch

Just LOOK  
at our Bookends  
NOW!

Teri and Phil Baird  
28825 County Road 5  
Elizabeth, CO 80107  
303-646-4373  
[www.brokenwindmill.com](http://www.brokenwindmill.com)

# **KAHURA UYU TABERNASH**

## **ALSA GRAND CHAMPION**



### **GENETICS THAT HAVE STOOD THE TEST OF TIME**



**TAB RETIRED FROM THE SHOW RING IN 1995,  
WITH 32 CHAMPIONSHIPS IN HALTER, PERFORMANCE &  
GET CLASSES. OVER THE PAST DECADE, HIS OFFSPRING HAVE  
BEEN AWARDED CHAMPIONSHIPS IN HALTER &  
PERFORMANCE CLASSES EACH SHOW SEASON.**

**LOUGENE & RON BAIRD  
PLUM VALLEY LLAMAS  
SEDALIA, COLORADO  
(303) 688-5445  
E-MAIL: LOUGENE@ATT.NET**

**LIMITED OUTSIDE BREEDINGS AVAILABLE FOR 2001**

**FMLA  
11818 W. 52nd Avenue  
Wheat Ridge, Colorado  
80038-2035**

**Postage Service Requested**

**Non Profit Org  
US Postage  
PAID  
Permit #361  
Kansas City, MO**