

November  
2000

Journal of the

**RMLA**



**Rocky Mountain Llama and Alpaca Association**

©2000 RMLA



"SHED A LITTLE LIGHT ON YOUR  
HERD!"

WITH A BREEDING TO ONE OF OUR THREE ALSA HALTER  
CHAMPION HERDSIRES

SAQUARO



SPIRIT



FERNANDO LLAMAS

**SANCHEZ CREEK LLAMAS**

JOE & SANDRA PAYNE PO BOX 205 FLORISSANT, CO. 89816

719-748-9047

FX: 719-748-5001

e-mail: [joe@msx.com](mailto:joe@msx.com)

*BOOK YOUR BREEDINGS NOW!*

*SIX ALSA HALTER CHAMPIONS  
AND MORE ON THEIR WAY!*

## In this issue . . . .

President's Message	5
Letter from the President-Elect	6
Recognition of Members	7
The Llama Elderhostel Report	8
RMLA Annual Business Meeting Report	10
Ohio State Camelid Conference	10
RMLA's Website	11
Letter to the Editor	11
Membership Reports	12, 30
Library Report	12
Boulder County Fair Youth Show Results	13
Calendar of Events	14
Wyoming, Meet Some Llamas!	19
Estes Park Wool Market Fiber Competition Results	20
The Difference between the Fiber Pool and the Fiber Coop	20
Llama Llafts	25
Neonatal Clinic Reports: A Day with Dr. Johnson	26
Our Newest RMLA Members	31
Our Advertisers	34

---

*As most of you know by now, events forced the postponement of this year's Annual Conference. Papers from the speakers will be published in the next few issues of the RMLA Journal. We thank those who did register, and were sorry to have to postpone the conference. The Annual Meeting was held, though, on October 21. Reports from this meeting can be found on pages 7 and 10.*

On our Front Cover: It's fun to be a baby llama, especially in good weather! Photo courtesy of Maggie Merrill Brown.

# Rocky Mountain Llama and Alpaca Association

## Board of Directors

President	President-Elect	Vice President	Secretary	Treasurer	Past-President (non-voting, Advisory position)
Larry Lewellyn	Robert Tompkins	Jerry Dunn	Jill Knuckles	Lougene Baird	Bruce Ellis
10715 W. Belleview Littleton, CO 80127 303-979-4815 fhillamas@aol.com	8216 Stagecoach Rd. Cheyenne, WY 82009 307-635-2168 Pwllamas@juno.com	14550 W. 50th Ave. Golden, CO 80403 303-277-1129 (voice and fax) beartrak@gte.net	2970 A 1/2 Road Grand Junction, CO 81603 970-241-4112 tailtallamas@bigplanet.com	2210 Pine Wood Road Sedalia, CO 80135 303-688-5445 (voice) 303-688-1887 (fax) lougene@att.net	10725 E. Camelot Dr. Franktown, CO 80116-9471 303-688-9466 bee@bee.com

## Committees

Committee	Liaison	Chairperson	Telephone	E-Mail Address
Bookstore	Lougene Baird	Keith/Katie Wegner	303-273-9445	k2wegne@attglobal.net
Bylaws	Larry Lewellyn	Robert Tompkins	307-635-2168	pwlamas@juno.com
Continuing Education	Jerry Dunn	Vacant		
Elections	Robert Tompkins	Vacant		
Events/Marketing	Larry Lewellyn	Jerry Dunn	303-277-1129	beartrak@gte.net
Fiber	Rob Tompkins	Sharon Beacham	303-666-9437	beachams@phf-llamas.com
4-H Advisor	Jill Knuckles	Karen Kinyon	970-484-6241	kdd@oneimage.com
Library	Jill Knuckles	Vacant		
Membership	Lougene Baird	Sharon Herbold	719-495-3092	ppwoolies@earthlink.com
Research	Larry Lewellyn	Bob/Barbara Hance	303-422-4681	hancelama@att.net
Publishing	Lougene Baird	Ron Baird	303-688-5445	ronbaird@juno.com
Youth	Jill Knuckles	Camelid Kids, Barbara Flinn Journal, Teri Nilson Baird Barb Harris	307-683-2548 303-646-4373 719-275-9457	cloudpk@wavecom.net brokenwindmill@bwn.net

## RMLA Journal

### Editor

Teri Nilson Baird  
28825 County Rd. 5  
Elizabeth, CO 80107  
303-646-4373 (voice)  
303-646-5856 (fax)  
brokenwindmill@bwn.net

### Advertisements

Marilyn Arnold  
11483 E. Ponderosa Lane  
Franktown, CO 80116-9319  
303-841-5126 (voice and fax)  
arnoldhm@earthlink.net

### Committee

Bobra Goldsmith  
Diane Tompkins  
Katie Wegner  
Jill Knuckles  
Terry Lynch

### Journal Deadlines

Winter Issue	January 1
Spring Promotional Issue	April 1
Summer Issue	July 1
Fall Issue	October 1

Advertising information is found in the back section of the Journal.

© The Rocky Mountain Llama and Alpaca Association

Reproduction of articles herein is authorized, subject to written permission being obtained from the individual authors. *Exchange Newsletters* may reproduce articles as needed so long as the author and the publication are given credit for the original work. Exception: Articles denoted with a © or "ALL RIGHTS RESERVED" *must* obtain approval from the author.

NOTES: The information contained in this Journal is not intended to be a substitute for qualified professional advice. Readers are encouraged to consult with their own veterinarian, accountant, or attorney with any questions concerning their animals or business operations. RMLA is not responsible for any losses resulting from readers' failure to heed this caution. The views expressed by the writers of the articles herein are not necessarily those of the Rocky Mountain Llama and Alpaca Association, its' board, and/or its' members.

# RMLA President's Message

Larry Lewellyn, FootHills Llamas

(303) 979-4815

fnllamas@aol.com

---

Well, it's been a long, or should I say short, year since the RMLA conference in Grand Junction. Time flies when you're having fun and that is just what I've been doing all year with so many RMLA members. Shows, fun, shows, fun – what a life!!! I want to thank all of you who participated in the many RMLA sponsored events as volunteers, participants and supporters. Everyone did a wonderful job and made this past year a very big success. Without you, RMLA would not be the terrific organization it is. Keep it up gang.

I am so excited to serve as your President this year and hope it will be a fun and exciting year for all of our members. Your RMLA board would like to see more mini-conferences to be held in New Mexico, Wyoming and a few in Colorado. Don't forget to keep a watch out for the Annual Business Meeting that will be scheduled with the RMLA Conference next year. So, if you are interested in sponsoring a mini-conference or assisting in the planning of the annual conference, please contact any RMLA Board Member. We need to get out and around the states to promote and sell RMLA. With the memberships' support, this can be done.

As you know, RMLA members and their needs have changed and we must grow as the industry grows and changes. The membership saw the need for marketing your animals. We believe there is still a need to make the public aware how wonderful, fun and versatile these animals are. If you are interested in this, I encourage you to get involved with the marketing committee. I strongly encourage you to get involved with any of the committees.

RMLA has so much to offer the members. The Fiber Coop to sell your items or to get started in fiber processing. The RMLA Library is a vital resource to all, full of educational and informational materials and keeps getting better and better. The RMLA Journal is truly one of the best in the country, but is only as good as we make it. We need you to share your stories or write an article and what a great way to advertise. Remember, the RMLA Journal does not only stay in this region, but is mailed across the country and to a few places outside of the United States. One of my visions is to see the Journal become the largest llama and alpaca publication in the country.

The best reward I have received by being an RMLA member has been the friendships I have developed with many of you. As you are probably aware, I try to give 100% whenever I am working with and participating in RMLA events. I really enjoy my time spent at shows with the other members, my animals and yours, too. I joined RMLA in 1997, when Deanna and I decided to start showing animals. I have owned llamas since 1983, but was strictly a packer. Joining RMLA was a great decision for us and I wish I had listened to Jack Robertson a long time ago. The people are the best and together, by presenting a strong and unified organization, we will only get better.

Please feel free to call or e-mail me, or any of the RMLA Board of Directors. We really want to hear from you and are soliciting everyone for their input and participation. Remember, none of us is as good as all of us. Continue to enjoy and love your animals.

Larry

## And From our new President-Elect.....

Dear Teri:

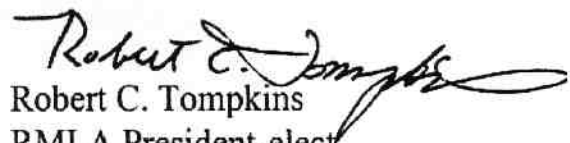
I am sending you this letter for consideration to publish in the *RMLA Journal*. As President-elect of RMLA I would like to introduce myself to the membership.

By way of introduction, my name is Robert Tompkins. I am a native of Kansas and I have previously lived in Oklahoma. I have lived in Wyoming since 1989. My wife is Diane Walker Tompkins and we are the parents of two adult children, ages twenty-seven (27) and twenty-five (25). Diane and I hang our hats at 8216 Stagecoach Road in Cheyenne, Wyoming. The emphasis of our part-time small business is the marketing of fiber producing llamas. That notwithstanding, we regularly take our llamas packing, to the show ring, to our local Christmas parade and to the Wyoming Hunting and Fishing Expo. We are also the superintendents of the Laramie County Fair Llama Show, held annually in August, in Cheyenne.

By way of education and background, my graduate degrees are from the University of Tulsa (Juris Doctor) and the University of Kansas (Masters in Public Administration). I am currently employed full-time with the Wyoming Department of Revenue as a Manager overseeing taxability and exemption determinations associated with sales and use tax statutes. A memorable portion of my biography has involved adjunct teaching at the college level.

I am honored to be your President-elect. I look forward to being a partner for the betterment of RMLA. Over the years I have come to appreciate the power of communication and education. Through dialogue and sharing we will continue to refine the vision of RMLA. Through hard work we will implement that vision. I have much to learn. Fortunately, I am trainable. I look forward to receiving your input and to serving the membership of RMLA.

Sincerely,



Robert C. Tompkins  
RMLA President-elect  
8216 Stagecoach Road  
Cheyenne, WY 82009-9509  
(307)635-2168  
E-mail: [pwillamas@juno.com](mailto:pwillamas@juno.com)

## Many Thanks!

To Bruce Ellis, Immediate Past President, for his years of service to the RMLA Board of Directors. We appreciate your time and your advice over the past three years and look forward to seeing you often.

### RMLA Members Recognized At Annual Meeting

By Deanna Lewellyn, Foothills Llamas

At the Annual RMLA Meeting held on October 21, 2000, at the Federal Correctional Institution (FCI) Training Center, the RMLA Board of Directors presented Awards of Excellence to a number of RMLA members who have consistently devoted their time and energy to supporting, promoting and improving RMLA activities. The following is a list of members who received these awards and the reasons for their recognition. Please offer your thanks when you see them. Remember, without members like this, and all the other terrific volunteers, exhibitors and supporters, the organization would not be as wonderful as it is today.

Sharon Beacham	For her extraordinary efforts and management of the RMLA Fiber Coop.
Terri Baird	For her outstanding management and publishing of the RMLA Journal.
Bob & Barb Hance	For their tireless efforts and wonderful abilities while serving on the RMLA Membership Committee.
Barb Harris & Bob Welch	For their constant willingness and dedication to serve as volunteers at RMLA events.
Karen Kinyon	For her extraordinary efforts and management of the RMLA Fiber Coop.
Roger & Betty Miller	For their willingness and organization in coordinating the Annual Fairplay Llama Pack Race year after year.
Pete and Jean Peterson	For their creative abilities and hard work with improving the RMLA Booth.
Betty Robertson	For her continuous dedication and loving support of RMLA sponsored events.
Sally Rucker	For everything she does while volunteering and the fun she provides to all of us.
Lloyd Wamsley	For the constant support and helpful attitude he displays while volunteering and participating in RMLA events.

THANK YOU

# Another Successful Llama Elderhostel at Pingree Park

Karen Kinyon, Double K Diamond Ranch

Fort Collins, Colorado

July 30 through August 5, 2000, found many of us at the beautiful CSU campus in the mountains, Pingree Park. We participated in the second llama Elderhostel held there and it was a wonderful success. Participants were from Tyler, Texas; Turpin, Oklahoma; Victoria, British Columbia, and all points in between. Twenty Elders learned about spinning, knitting, weaving and felting with Llama and Alpaca fiber and enjoyed six hikes in the mountains near the Mummy Range. They also got to meet a mama llama and her cria and learned about shearing and skirting llama fleece. Accommodations at Pingree Park were very comfortable and food abundant.

It was a very busy week and would not have been possible without the help of many people. Congratulations on the success of the program and many thanks are extended to the following members, family and friends:

Stan Ebel of the Buckhorn Llama Company, Inc. donated six of his able and well-trained pack llamas for the elders to enjoy. Everyone enjoyed brushing and packing up these guys to carry the lunches, cameras, and rain gear.

Chris Switzer of Switzerland Alpacas donated weaving equipment. She warped three Inkle Looms and one Rigid Heddle Loom so that students would be able to work with them. It was most helpful to have this work done in advance so the students could start creating right away.



**DJ Kinyon with Kracker Jac.**

Willie Huck provided two llamas and stayed to help with the spinning and weaving classes.

Bobra Goldsmith donated two pack llamas as well as the mama and cria and stayed to help with two days of hiking.

Dr. LaRue and Mary Johnson took time from their busy schedules to help with hiking and weaving. LaRue and Bobra also spent an afternoon answering questions and entertaining the group in an impromptu discussion about llamas, their history and care.

Sarah Smith brought two llamas and helped with a day of hiking.

Sharon Beacham spent a day teaching about shearing, skirting and talking about llama reproduction and the joys of cria care.



**DJ Kinyon and Bobra Goldsmith.**

Judy Cox-Sample spent the entire week and assisted with everything from "bean patrol" to demonstrating fiber preparation with the European combs.

Deborah Cowan-Cooper, the Elderhostel Coordinator at Pingree Park also provided two llamas and the help of her husband, Tony and daughter, Sarah to make this program a wonderful success.

Ed and Diane Strezlinski from Boyne City, Michigan stayed for the entire week to help with all the aspects of the Llama Elderhostel from registering participants, helping with felting and weaving, to helping with llamas,



hikes and even making coffee everyday in the break room. They were completely devoted to helping with this program and were instrumental in its wonderful success.

And last but certainly not least, Bob and D. J. Kinyon must be recognized. D. J. for taking vacation from his full-time job to help Mom with this event. He helped in all aspects but really showed his expertise with llama care, feeding, and hiking. Bob made three round trips to Pingree Park, built panel holders on the llama trailer, set up the motorhome, built panel pens to create the "llama compound", unloaded llamas, then came back at the end of the week to bring it all home. Without all their help the program would never have made it off the ground.

A special thank you is extended to Pingree Park for allowing this program to become a reality. It is one of only a few Llama Elderhostel programs in the United States and a very unique and popular event. Watch this publication for the next opportunity to help with a similar program. It is an excellent opportunity to share the versatility of our llama friends and promote them in a completely new market.

## LLAMA CHRISTMAS ORNAMENTS



View them in color on the "Llamaweb."

These elegant blown glass ornaments are hand painted from the inside. Each comes in a colorful, sturdy box. Sold in sets of 3.

**\$45 + \$4.95 S&H.**

We accept checks, money orders, Visa or Mastercard.

Send to:

Lost Boys Ranch Creations  
1600 South Quail Run Road  
Watkins, CO. 80137

303-739-2910

Fax: 303-344-4257

[LBRCreations@aol.com](mailto:LBRCreations@aol.com)

## Did You Know That.....

ILR (International Llama Registry) e-mail has changed. You may contact them at [ilr@lamaregistry.com](mailto:ilr@lamaregistry.com)

ARI (Alpaca Registry) e-mail has changed. Contact them at [ari@alpacaregistry.net](mailto:ari@alpacaregistry.net)

Minutes of the ILR meetings will be found at [www.lamaregistry.com](http://www.lamaregistry.com)

Minutes of the ILA board are published at [www.InternationalLlama.org](http://www.InternationalLlama.org)

Minutes of the ALSA board meetings can be found at [www.llama.org/alsa](http://www.llama.org/alsa)

---

## RMLA's Ghostwriter.....

Got a story you would like to tell but don't know how to put it into words? Afraid the grammar-bug might bite?



Call or e-mail Katie Wegner. She's offered to write up your experiences for the Journal.

Contact Katie at 303-273-9445 or by e-mail at [k2wegne@attglobal.net](mailto:k2wegne@attglobal.net) to overcome writers' block!

---

## Business Meeting October 21, 2000

Election Results announced at the business meeting are as follows:

Robert Tompkins----President-Elect  
Jerry Dunn-----Vice-President  
Lougene Baird-----Treasurer

Members approved a new membership category which does away with the old Individual and Ranch membership category.

There will now be one category of membership "Annual" which will include up to two names as members with a cost of \$40.00. Each adult member will be allowed one vote. There is no change to the Junior, Youth or Life Memberships. All "Annual and Life" members will be listed on the RMLA Web Site. Special thanks to Bruce Ellis for two years of service as president.

In every herd there is a llama that marches to a different drum. In ours, it's Whiplash. He seems to have the philosophy that life shouldn't take too much effort. One of his favorite ways to relax is to roll over on his back and sun his tummy. He will not only sleep in this vulnerable position, but chooses to spend time simply viewing the world upside down!

It is mighty strange to see those eyes following the activity in the area while he lounges with feet in the air. Since he is our only llama who spends time this way, the others are always checking up on him, seeming to make sure he is really all right. Our human visitors are always startled and amused to see this llama acting so strangely!"

Maggie Brown



---

## Ohio State University Hosts 3rd Annual Camelid Conference in December

Ohio State University is proud to offer a THIRD ANNUAL CAMELID CONFERENCE FOR OWNERS in December of 2000. This one is special because we will have our first ever FIBER CONFERENCE and we will be featuring Drs. Walter Bravo, Norman Evans, and Toni Cotton for the health and reproduction conference.

All are welcome so please pass this along to any owners and breeders you know. For further information, please contact:

David E Anderson, DVM, MS  
Diplomate, American College of Veterinary Surgeons  
Associate Professor of Surgery, Food Animal  
601 Vernon L Tharp Street  
College of Veterinary Medicine  
The Ohio State University  
Columbus, Ohio 43210

The RMLA web site was conceived and brought to life by Bob Riley 3 years ago (1997), when all of this web stuff was a really NEW concept. Most of our pages are still his original creation. Some of you will remember the concept to pay for the cost of the site is the extra \$15 we pay to have a "Service Directory" advertising on the "Internet". When Bob begged off the job of "Web Master" with his move to Kansas, Bruce Ellis took over the position. Bruce added some great ideas and created some different pages. Since July, 2000 Bob and I have been trying to fill the shoes of these two great men.

Bob and I are trying to make RMLA information easy for you to access, and also trying to let other folks out in the world know a little more about LAMAS.

DOMAIN NAME: This is a unique name that no one else can use, ever, as long as we pay for it every two years. Ours is [www.rmla.com](http://www.rmla.com). WWW stands for World Wide Web; ".com" allows us to be a "commercial" seller for the sale of "Caring for Llamas~". [www.rmla.com](http://www.rmla.com) is what you would type into the window, titled "Address", when your computer internet search or host browser comes up on your

screen. This opens the "RMLA Home Page", which tells a little about RMLA. There are a number of words that are underlined, if you point your mouse arrow to an underlined word and click, a new page appears, related to that word. For instance the first word in alphabetical order is "Annual Meeting". This page is the "Events" page; it has the information about our meeting: where, when and etc.

Other pages include: Education, all about Llamas & Alpacas; Up Coming Events; Fiber Uses; Guard Llamas (still under construction); About Packing; A Membership form; The 2001 Service Directory Form; The Ranch Members; The Order form for "Caring for Llamas & Alpacas" with a sample chapter about "Teeth; Research Funding; The complete Library List and order form for members; The Youth Page; and The Service Directory, by category;.

There are "Links" (highlighted in blue or purple and underlined - point mouse arrow and click) to ALSA, to each Board Member, and to the Chairpersons on the home page and links to members email or Web sites on the Ranch members pages and on the Service Directory pages.

We are making every effort to keep this as current as we can. If any of you have suggestions about changes or additions, please let us know.

Bruce Ellis, President  
RMLA  
10725 E. Camelot Drive  
Franktown, CO 80116-9471

Dear Bruce:

I would like to commend RMLA for having such special speakers at the October 2000 conference as Bobra Goldsmith, Jerry Dunn, Darlene Vaughan, Chris Switzer, Sally German-Rucker, Wes Mauz, the Hance's, the Hartsough's, and others who have guided RMLA over the years. Enough thanks can't be given to Dr. LaRue Johnson, who stepped in and helped RMLA so immensely from the beginning. He certainly is special to RMLA. Some of our Founders are gone, and we acknowledge them also.

When RMLA organized in 1982, we had no guidelines. We learned by sharing information with each other. Sometimes we learned the hard way, too! As a result of all this sharing, we have dear friends located across this country and we are grateful for all of them.

I appreciate reading each RMLA Journal, and realize what great strides and impact RMLA has made. It's really great to read all of the activities pursued and the work with the youth.

We have not been able to have llamas since 1994 when I had to start using liquid oxygen full time. Our years with llamas have become some of our most memorable years.

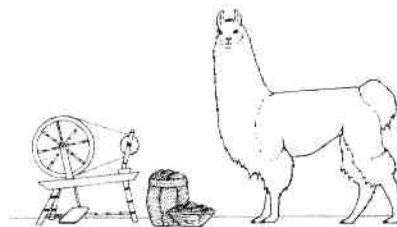
May you have a great Conference and you older members be able to share with the newer llama owners. Llamas are still a most wonderful animal.

Thanks for letting me share,

With llama llove,  
Erma Hast

15251-6100 Road, Montrose, CO 81401  
970-249-3083 behast@frontier.net

## ROCKY MOUNTAIN LAMA FIBER POOL



We're now collecting llama and alpaca  
fiber for processing next March.

Please send for our free brochure  
or phone for information.

The Fiber Pool is a private business  
owned and operated by:

Sharon Beacham  
2380 - 95<sup>th</sup> Street  
Boulder, CO 80301  
303/ 666-9437

Karen R. Kinyon  
2933 E. Mulberry  
Ft. Collins, CO 80524  
970/ 484-6241

ALSA Certified Llama Fiber Judges

## Membership Report: It's Time to Renew Your RMLA Membership!

Bob and Barb Hance, Membership Chairs, Hance Ranch, Wheat Ridge, Colorado

---

Please note the special insert with the 2001 Membership renewal form and the 2001 Service Directory Advertising Order form is in the center of this issue of the Journal.

We suggest that you remove these forms now, pin them to your calendar and tend to them as soon as possible, so they don't get lost in the Christmas Rush.

---

As you read this, the 2000 Annual Meeting will be history.

At this meeting the RMLA membership decided to change our dues format to only one price for adults. The new dues amount is \$40 per year.

For former "Individual" members, this means a \$10 per year price increase. But for the extra \$10 you will have your name, ranch/farm/business, address, phone, and fax listed on the RMLA web site with your e-mail and web address linked.

The former "Ranch" member will have the same listing, but the membership fee is reduced by \$10. The Life Membership will remain the same at \$500.00.

After discussion about voting privileges, it was decided to allow a vote for each adult up to two per membership.

All members will be able to advertise in the service directory.

---

## Library Report: A News Flash for All RMLA Members!

Sharon Herbold, Chair, Pikes' Peak Woolies

---

The RMLA Library's presence on the RMLA website has been upgraded! A special thank you to Bob and Barbara Hance for their time and work in putting the complete listing of the materials in the library on the website. In addition, RMLA members can now complete a form at the library site and with one click, e-mail it directly to me.

I have received several requests in this manner and it has simplified the library immensely, because I am no longer trying to decipher messages on my answering machine, or calling members back who didn't leave a request with a message (which saves RMLA the cost of these phone calls).

As members of RMLA, there are many resources available to you in the library. One cautionary note – there are many new members utilizing this service, so all items may not be available immediately. Requests will be put on a waiting list and sent as they become available. Please remember that there are other members waiting for many items and I would appreciate their prompt return so that they may be sent to the next person.

Again, thank you Bob and Barb for your efforts in getting the library updated. Please try this method the next time you would like to check out materials from the library.

**BOULDER COUNTY FAIR**  
**AUGUST 11, 2000**

Performance

	<b><u>Grand</u></b>	<b><u>Reserve</u></b>
Junior	Matthew Anderson	Emily Varela
Intermediate	Brianna Livengood	Alissa Veuthey

Sub-Junior Showmanship (Under 8)

1 <sup>st</sup>	Jacob Van Deusen	<u>Llama</u> Merlin
-----------------	------------------	------------------------

Junior Showmanship (8-13 years)

1 <sup>st</sup>	Emily Varela	Rosie's Duke
2 <sup>nd</sup>	Ashley Nuckols	Sparky
3 <sup>rd</sup>	Zach Lynch	Moon Cradle's Finny
4 <sup>th</sup>	Caleb Van Deusen	First Choice
5 <sup>th</sup>	Kyle Nuckols	Preston

Intermediate Showmanship (14-18 years)

1 <sup>st</sup>	Brianna Livengood	Grand Valley's Avalanche
2 <sup>nd</sup>	Alissa Veuthey	T.T.E. Snickerdoodle

Sub-Junior Obstacle (Under 8)

1 <sup>st</sup>	Jacob Van Deusen	Merlin
-----------------	------------------	--------

Junior Obstacle (8-13 years)

1 <sup>st</sup>	Matthew Anderson	Sunset's Cadet
2 <sup>nd</sup>	Emily Varela	Rosie's Duke
3 <sup>rd</sup>	Caleb Van Deusen	First Choice
4 <sup>th</sup>	Ashley Nuckols	Sparky

Intermediate Obstacle (14-18 years)

1 <sup>st</sup>	Brianna Livengood	Grand Valley's Avalanche
2 <sup>nd</sup>	Alissa Veuthey	P.P.W. Cosmo

Junior Public Relations (8-13 years)

1 <sup>st</sup>	Emily Varela	Rosie's Duke
2 <sup>nd</sup>	Matthew Anderson	Sunset's Cadet
3 <sup>rd</sup>	Caleb Van Deusen	First Choice

Intermediate Public Relations (14-18 years)

1 <sup>st</sup>	Brianna Livengood	Grand Valley's Avalanche
2 <sup>nd</sup>	Alissa Veuthey	P.P.W. Cosmo

Junior Youth Pack (8-13 years)

1 <sup>st</sup>	Caleb Van Deusen	First Choice
2 <sup>nd</sup>	Emily Varela	Rosie's Duke
3 <sup>rd</sup>	Matthew Anderson	Sunset's Cadet

Intermediate Youth Pack (14-18 years)

1 <sup>st</sup>	Alissa Veuthey	P.P.W. Cosmo
2 <sup>nd</sup>	Brianna Livengood	Grand Valley's Avalanche

RMLA on  
TV



The Animal Planet story featuring Diane White-Crane and her two llamas has debuted on the Animal Planet network.

The following dates are when the program will be shown - the original was shown on August 1 and September 13. They had so many requests for the program to be shown again, that there are six more scheduled times on Animal Planet.

October 31	4 p.m.	EST
December 15	4 p.m.	EST
January 17	3 p.m.	" "
February 7	3 p.m.	" "
March 1	3 p.m.	" "
March 22	3 p.m.	" "

For any other information as to scheduled air times, call 1-888-404-5969

If you would pass this along to the other members, I know Diane would appreciate it. There was about 30 hours of filming at Steamboat Springs last April and they condensed it down to less than 30 minutes.

# 2001 Calendar of Events

## January

- **National Western Stock Show Llama Show**, Denver, Colorado January 6-7  
Contact Jerry Dunn 303-277-1129
- **RMLA Fiber Coop Booth, National Western Stock Show**, Denver, Colorado January 6-7  
Contact Sharon Beacham 303-666-9437 or Karen Kinyon 970-484-6241

## February

- **Have a Heart Llama Show**, Las Cruces, New Mexico Contact Mary Summers, 505-867-3442
- **Valentine's Llama Show~Alpacas, Too**, Las Cruces, New Mexico Contact Mary Summers 505-867-3442

## March

- **St. Patrick's Day Parade**, Colorado Springs, Colorado Contact Roger Miller 719-307-9332
- **St. Patrick's Day Parade**, Denver, Colorado Contact Jim Haas, 303-670-3373
- **Four-States Agricultural Expo**, Cortez, Colorado Contact Pete Peterson 970-565-0785
- **Llamas, Alpacas, and Kids in the Park**, Wheat Ridge, Colorado March 24  
Contact Jerry Dunn 303-277-1129

## April

- **Bear Track Farm Driving Clinic**, Golden, Colorado April 14-15 Contact Jerry Dunn 303-277-1129
- **Banana Belt Llama Classic**, Grand Junction, Colorado April 28 Contact Dottie LaRue 970-527-3181
- **Western Slope Llama Classic**, Grand Junction, Colorado April 29 Contact Dottie LaRue 970-527-3181

## May

- **New Mexico Spring Fling**, Santa Fe, New Mexico Contact Kim Pisel
- **Jelly Bean Classic—Llama Fun Day**, Arvada, Colorado May 12 Contact Mary Mauz 303-526-0092
- **Spring Sneakers—Performance Show**, Arvada, Colorado May 19 Contact Jerry Dunn 303-277-1129

## June

- **LOCC Spring Show**, Colorado Springs, Colorado Contact Jeff Rucker 719-689-9010
- **Estes Park Wool Market**, Estes Park, Colorado June 16-17 Contact Linda Hinze 970-586-6104
- **RMLA Fiber Coop Booth, Estes Park Wool Market Vendors' Barn** Estes Park, Colorado June 16-17  
Contact Sharon Beacham 303-666-9437 or Karen Kinyon 970-484-6241

## July

- **Fairplay Llama Pack Race**, Fairplay, Colorado Contact Roger Miller 719-749-0119

## August

- **Big Horn Rendezvous**, Story, Wyoming Contact Barb Coffman-Flinn 307-683-2548
- **Boulder County Youth Show**, Longmont, Colorado  
Contact Mary Beth Hartsough 970-785-2463 or Terry Lynch 303-651-3022
- **Laramie County Fair**, Cheyenne, Wyoming Contact Diane Walker Tompkins 307-635-2160
- **Wyoming State Fair—Llama Show**, Douglas, Wyoming Contact Ellen Schreiner 307-265-1780
- **RMLA Fiber Coop Booth, Wyoming State Fair**, Douglas, Wyoming August 18-19  
Contact Sharon Beacham 303-666-9437 or Karen Kinyon 970-484-6241

## September

- **LOCC Fall Classic Llama Show**, Colorado Springs, Colorado Contact Mike Shealy 719-495-3757
- **Bear Track Farm Driving Clinic**, Golden, Colorado September 15-16 Contact Jerry Dunn 303-277-1129
- **Golden Gate Escape~Llama Packers Weekend**, September 22-23 Contact Jerry Dunn 303-277-1129

## October

- **Candy Corn Fun Classic**, Silt, Colorado October 6 Contact Mary Mauz 303-526-0092
- **RMLA Fiber Coop Booth, Taos Wool Festival**, Taos, New Mexico October 6-7  
Contact Sharon Beacham 303-666-9437 or Karen Kinyon 970-484-6241
- **RMLA Annual Meeting and Conference—stay tuned for the date!**
- **ALSA Rocky Mountain Regional Llama Show**

## November

- **RMLA Fiber Coop Booth, ALSA Grand National Show**

**Have an event you'd like RMLA to sponsor? Call Jerry Dunn at 303-277-1129. Sponsorship is free, and there are a lot of benefits!**

# Cache La Poudre



## MINERALS

Call to Order  
or to receive a brochure  
**800-758-0825**

303-646-5829

### Supplement # 1

Diet consists of: Late or non-irrigated summer, fall or winter pasture; feeding grass hay. Contains a 2:1 calcium/phosphorus ratio and additional Vitamin E.

25 lbs, \$30      50 lbs, \$57

## Insure your Llama and Alpacas' Health for just Pennies per Day!

Cache La Poudre Minerals are free choice Vitamin and Mineral supplements formulated specifically to balance your llama and alpacas' diet.

- ◆ The supplements do not add unnecessary calories or protein to the animals' diet
- ◆ They are tailored to meet different feeding situations
- ◆ They are palatable so the animals will consume them willingly
- ◆ They are safer than pellets, which may cause them to choke

**On the web at: [www.CLPMinerals.com](http://www.CLPMinerals.com)**

Zinpro® 100 also available

### Supplement # 2

Diet consists of: Late or non-irrigated summer, fall or winter pasture; feeding alfalfa or grass hay low in phosphorus. Contains additional phosphorus and Vitamin E.

25 lbs, \$30      50 lbs, \$57

### Supplement # 3

Diet consists of: Spring or irrigated pastures; feeding alfalfa or grass hay low in phosphorus. Contains additional phosphorus and recommended basic level of Vitamin E.

25 lbs, \$25      50 lbs, \$47

**Prices do not include shipping**

*In the Ribbons,  
In the Backyard,  
On the Trail . . .*



**Bred for  
Fashion,  
Function  
and  
Fun.**

*See us at the Denver Regional and National Championship Shows!*

**DOUBLE *J* LLAMAS**

*Laramie, Wyoming*

P.O. Box 612 • Laramie • Wyoming • 82073  
307.721.2919 • [dbljllamas@aol.com](mailto:dbljllamas@aol.com)  
Web Site: [www.llamasatdoublej.com](http://www.llamasatdoublej.com)



# Treasurer's Report

Lougene Baird, RMLA Treasurer

---

Thank you for your vote of confidence by re-electing me to the Board of Directors as Treasurer. I look forward with enthusiasm to the next two years and will represent each of you to the best of my ability.

The following is the Treasury Report given at the Annual Meeting on October 21, 2000.

General Operations	\$11,885
General Operations Liquid Asset	25,637
Research Reserve Savings	2,485
Life Member Reserve Savings	4,918
<u>Caring for Llamas General Ops.</u>	<u>8,984</u>
<u>Caring for Llamas Prodctn. Savings</u>	<u>20,844</u>
Total Cash on Hand	\$74,753

All invoices were paid and all monies deposited. We are currently working on the budget for the upcoming year.

If you have any questions regarding the above numbers, please feel free to call me and I will discuss any concerns with you. I also work as liaison to the following committees, and a brief report follows of the activities of each committee.

## RMLA Bookstore

RMLA will take delivery on the reprint of *Caring for Llamas and Alpacas*, Second Edition, Third Printing, by mid-November. Keith and Katie Wegner have done an outstanding job in managing the affairs of the Bookstore and plan to continue their service to RMLA into the future. All Bookstore accounting is current and all records are in excellent condition. Only a few copies of the second printing remain in the Bookstore inventory. There are no unusual outstanding balances due from book resellers.

## Membership

Membership chairs Bob and Barb Hance are in the process of collecting membership renewals for the year 2001. The form can be found in the center of this Journal. Also in the insert is the Service Directory advertising form. This is a wonderful way to advertise your lama farm or ranch. Each year, many sales to new lama owners are tracked through the Service Directory. As you may know, Bob and Barb also manage our e-mail Newslines. Be sure to keep your mailing and e-mail addresses current with them so that you get all information that is sent along to members. The Hances have also taken over the operation of the RMLA website. Bob and Barb are wonderful volunteers for RMLA and we all thank them for their gift of time and talents.


## Journal of the RMLA

The Journal is your publication, and is one of the most important communication tools we have. As members, we all need to take the opportunity to share important information through the Journal. If you need help in writing a story, we now have volunteers in place to help you. A photo is an easy way to tell a story; send us your photo and a small caption about you and your lama. As always, the Journal is a great advertising tool. I have spoken to many members over the past several weeks who have said the Journal is very important to them and they appreciate receiving it. Thanks to Teri Baird for the many, many hours she has given to us all by time spent on the Journal.

## The RMLA Library

To better balance the workload of the Board, I am no longer liaison to the Library. Jill Knuckles will be the new liaison. I thank Sharon Herbold for managing the Library with speed and accuracy and have enjoyed being the

**Quality Llama Products**



**www.llamaproducts.com**  
**1-800-638-4689**

liaison to this Committee over the past years. Look at rmla.com, click on Library, and order up any library item over the web. Sharon loves this easy request method! We all appreciate your help, Sharon—good job.

Have a wonderful holiday season with your families, friends, and animals. Respectfully,

Lougene

*Same low rates.....*

*Same secure company...*



**Lone Star  
 Is now  
 National Livestock Agency**

**Protection for  
 LLAMA-ALPACA**

**Full Mortality\*Limited Accident\*Transit\*Theft**

Call Brandon at  
**1-800-692-4031**

**OR FAX INFO TO**  
**1-806-372-3826**

**National Livestock Agency**  
 PO Box 229  
 Amarillo, TX. 79105

*..insuring your livestock for 25*

**ALL PURCHASES ARE AUTOMATICALLY COVERED  
 IF YOU HAVE AN EXISTING POLICY!!**

\*From: \_\_\_\_\_



\_\_\_\_\_  
\_\_\_\_\_  
\_\_\_\_\_

TO: Bob and Barbara Hance  
RMLA Membership Committee  
11818 W. 52nd Avenue  
Wheat Ridge, Colorado 80033-2032



**January thru December 2001 RMLA MEMBERSHIP**

Renew your membership in RMLA now! Your dues will assure the continuation of all the good RMLA has accomplished. Consider joining as a **LIFE MEMBER**.

- Junior Membership:** \$10.00 per year (must be 18 years or under and have an adult member sponsor). Not entitled to vote, but eligible to receive scholarships, stipends and loans from the RMLA Youth Education Fund.
- Youth Membership:** \$10.00 per year Former Junior members who have continued into higher education.
- Annual Membership:** \$40.00 per year (Up to 2 people per membership: 1 vote per person.)
- Life Membership:** \$500.00 one time only! Same as Annual, plus: Special recognition in Directory; 10% discount on conference fees; and a one time free 1/4 page ad in the Journal. If there are future special assessments, "Life Members" would pay the same as annual members.

To be sure you are in the Directory, your renewal must be postmarked by **December 31, 2000**

**Life memberships may be paid in 4 equal quarterly installments of \$125.00 each.**  
*If you prefer, you may join or renew at <http://www.rmla.com> - click on Membership*



Name \_\_\_\_\_

Name (2 or Jr. sponsor) \_\_\_\_\_

Ranch \_\_\_\_\_

Address \_\_\_\_\_

City \_\_\_\_\_ State \_\_\_\_\_ Zip \_\_\_\_\_

Phone \_\_\_\_\_ Fax \_\_\_\_\_

E-Mail \_\_\_\_\_ Home Page \_\_\_\_\_

# of Llamas owned: Females \_\_\_\_\_ Intact Males \_\_\_\_\_ Geldings \_\_\_\_\_

# of Alpacas owned: Females \_\_\_\_\_ Intact Males \_\_\_\_\_ Geldings \_\_\_\_\_

\_\_\_\_ Breeding(B)                      \_\_\_\_ Training (T)                      \_\_\_\_ Driving(DR)

\_\_\_\_ Sales(S)                              \_\_\_\_ Products(PR)                      \_\_\_\_ Boarding(BD)

\_\_\_\_ Wool(WL)                              \_\_\_\_ Research(RE)                      \_\_\_\_ Judging(JD)

\_\_\_\_ Packing(PK)                              \_\_\_\_ Leasing(LE)                      \_\_\_\_ Brokering(BK)

\_\_\_\_ Commercial Packing(COM PK)                      \_\_\_\_ Other(Specify) \_\_\_\_\_

\_\_\_\_ Life: . \$500.00 \_\_\_\_\_

\_\_\_\_ Annual: \$40.00 \_\_\_\_\_

\_\_\_\_ Junior: . \$10.00 \_\_\_\_\_

\_\_\_\_ Youth: \$10.00 \_\_\_\_\_

Service Directory: . . \$ \_\_\_\_\_

Total: . . . . . \$ \_\_\_\_\_

Visa/Mastercard EXP. Date \_\_\_\_\_

Acct. # \_\_\_\_\_

Signature \_\_\_\_\_

This charge will appear on your bill as:  
 Rocky Mt. Llama

- Check if interested in working on these committees:*
- \_\_\_\_ Finance      \_\_\_\_ Marketing      \_\_\_\_ Fiber      \_\_\_\_ Continuing Education
  - \_\_\_\_ Events      \_\_\_\_ Membership      \_\_\_\_ Nominations/Elections      \_\_\_\_ Research
  - \_\_\_\_ Publishing      \_\_\_\_ 4-H & Youth      \_\_\_\_ By-Laws      \_\_\_\_ Library

Mail this form with your check (payable to RMLA) or Credit Card information to:

**Bob & Barbara Hance**  
**11818 West 52nd Avenue**  
**Wheat Ridge CO 80033-2032**

Don't miss any of the events, sponsored by RMLA. **JOIN NOW!!!**

**Remember! The deadline is December 31, 2000**

# The RMLA Service Directory Advertising Offer

The "YELLOW PAGES": January 1, 2001 to December 31, 2001

The RMLA Service Directory, our "Yellow Pages," is included in every member packet (both present and new), with every inquiry package and is distributed at RMLA events throughout the year. More than 2500 have been distributed each year. It is an excellent, affordable, means of getting **Ranch Member** advertising in the hands of present and future llama and alpaca owners.

Each *Classification* and each *Business Card* in the Service Directory, costs only \$20.00. This a great way for you to gain attention for your ranch or farm. Mark the space below and be sure to **send us your Business Card**.

This year, RMLA will again add your Service Directory advertisement(s) to the RMLA World Wide Web Internet site for Just \$15.00 for each classification. Due to memory limitations, Business Cards cannot be put on the Web Site at this time.

Look for our web site at: <http://www.rmla.com>

## Service Directory 2001

*Check Classification(s)*

- Breeders     
  Commercial Packing     
  Fiber     
  Training  
 Equipment&Supplies     
  SpecialServices     
  StudService     
  Publications

Other \_\_\_\_\_

Name \_\_\_\_\_

Name (2) \_\_\_\_\_

Ranch/Business \_\_\_\_\_

Address \_\_\_\_\_

City \_\_\_\_\_ State \_\_\_\_\_ Zip \_\_\_\_\_

Phone \_\_\_\_\_ FAX \_\_\_\_\_

E-Mail \_\_\_\_\_ Home Page \_\_\_\_\_

### Advertisement(s)

1 to 3 lines describing your activities.  
For additional Classifications, attach separate sheet.

Classification: \_\_\_\_\_  Check if this is to be on the Internet. Add'l \$15.00

---



---



---

Classification: \_\_\_\_\_  Check if this is to be on the Internet. Add'l \$15.00

---



---

Qty.	Type	Price	Subtotal
_____	Classifications(\$20).	_____	_____
_____	Internet(\$15).	_____	_____
_____	BusinessCards.\$20.	_____	_____
_____	Full Page Ad.	_____	\$100.00
TOTAL			_____
Please carry total to membership form. Must be a Member to advertize in the Service Directory.			

~~Enclose this form with your membership renewal. You'll miss the print date if not postmarked by 12-31-00~~

# Wyoming, Meet Some Llamas!

Diane Walker Tompkins, Prairie Wind Llamas

Cheyenne, Wyoming

My husband, Robert, and I have a small llama operation in eastern Laramie County, just outside the city of Cheyenne. We had been thinking of ways to bring our business to the attention of buyers of both animals and fleece, when three tremendous opportunities sort of fell right into our laps. We would like to share our experiences.

I noticed that the Wyoming Business Council (WBC) printed and distributed pamphlets on the cattle, horse, and sheep producers of Wyoming, so I asked them, "Why not llamas?" They encouraged me to submit names and addresses, so I went them the Wyoming Llama Association (WLA) member list. This year, the WBC printed a single booklet with all the different animals in it, and I am happy to say that for the first time, llamas have been included. Now people know of local llama sources through this free publication. The WBC maintains a web page, and will update it as we get new WLA members.

At work one day, a woman who was putting together the Wyoming Hunting and Fishing Expo came through our office. Someone mentioned to her that I raised llamas and after she spoke with me for a few minutes, she asked if we would be presenters. The event had never before had llama participation, and she was excited about the prospect of having pack llamas there. She asked as an afterthought if I would bring my spinning wheel, too. This annual event is held in Casper, Wyoming. This year's event broke records, with literally thousands of people in attendance. Of course, everyone wanted to see the llama.

We took our smallest packer, and I have to tell you that llama justice was done in those three days. The spitting myth was dispelled and more than one cowboy took a close look at our boy who carried about 70 pounds for ten hours each day without complaint. The first day was kids and exceptionality day; our boy withstood herds of children charging up to him, touching him all over, and more hugs and kisses than he ever wants to see again! More importantly, he held still when the people in wheelchairs came up to him; he allowed those without sight to feel him; he sensed when the Downs Syndrome boy was too frightened to come close, so he gently approached the boy. The joy in that boy's eyes when he felt that velvety llama softness brought tears to many who saw the interaction. The sheer amount of llama education alone was well worth our three-day stay, but if we had a dozen packers, we probably could have sold them, too. But we are primarily fleece people, and got a few bites on that part of our business. We handed out lots of RMLA informational brochures, ran out of business cards, and were invited to return again next year.

The last scenario I will share with you happened just today and I am still aglow from the experience. I am sure there are many of you, like us, who are passionate about llamas. So much so, that a lot of folks we know tell us we can't talk about anything except llamas! You see, they don't share the passion. In January, I was invited to speak to the Cheyenne Retired Teachers' Association at their October meeting. Today was the day; Robert asked me if I had my speech written and I replied, "Are you kidding? Just ask me about llamas, and I won't run out of things to say." I told the group of approximately 100 how pleased I was to have a captive audience to talk to about my passion. Believe it or not, they were on the edge of their seats: not so much because I am a particularly good speaker, but rather that I enjoy these animals so much that the joy is contagious. More than one person came up to shake my hand and tell me how fascinating my talk was. Believe me, it was just the facts (which in and of themselves



**The people of Wyoming learn about llamas.**



are fascinating. Again, lots of RMLA brochures were taken, and I again ran out of business cards. Several people wanted llama sweaters!

These are just three experiences we've had lately. I think the common theme is education about llamas, but if your subject matter is llamas, it's a sure thing. We were a hit in all three areas because of our subject matter, and because people can see themselves becoming a part of this wonderful world we call llamas.

**Diane explains packing at the Wyoming Hunting and Fishing Expo.**

---

## EPWM Fiber Competition Results

ALSA Certified Fiber Judges, Sharon and Harold Herbold

### Handspinner's Choice

Exhibitors submit a one-ounce sample of prime fiber from the blanket area. It is judged on qualities that would make it desirable for spinning: fineness, length, cleanliness, amount and character of guard hair, luster, and tensile strength.

1. Moja's Mancha Man, Karen Kinyon
2. Doe's Tawny Feather, Karen Kinyon
3. Kilee, Dee Stoddard

### Shorn Llama Fleece

There were 17 entries in this class, enough to separate the wool into four divisions. Each entry consists of either the barrel or full blanket from the prime area of the llamas' fleece. They were judged on Cleanliness and Preparation, Fineness and Hand, Guard Hair, Style and Architecture, Luster, Overall Impression and Uniformity, and Tensile Strength and Condition.

#### Single Coat, 24 months and under

1. Doe's Tawny Feather, Karen Kinyon
2. Roy-Dee's Cocoa, Dee Stoddard

#### Single Coat, 25 months and over

1. Red Tail Thunder, Dee Stoddard
2. LRL Lightning, Shylan Bearden
3. Kilee, Dee Stoddard

#### Double Coat, 24 months and under

1. PWL's Lu's Legacy, Diane Walker Tompkins
2. Blue's Breeze, Diane Walker Tompkins
3. Chinook Noel, Diane Walker Tompkins

#### Double Coat, 25 months and over

1. Tall Tail's Shavano, Rob and Jill Knuckles
2. Feather RTC, Rob and Jill Knuckles
3. Cano, Cathy Anderson

The trophy for highest point total in the fleece competition was presented to PWL's Lu's Legacy, owned by Diane Walker Tompkins. Her fleece scored 99 out of a possible 100 points.

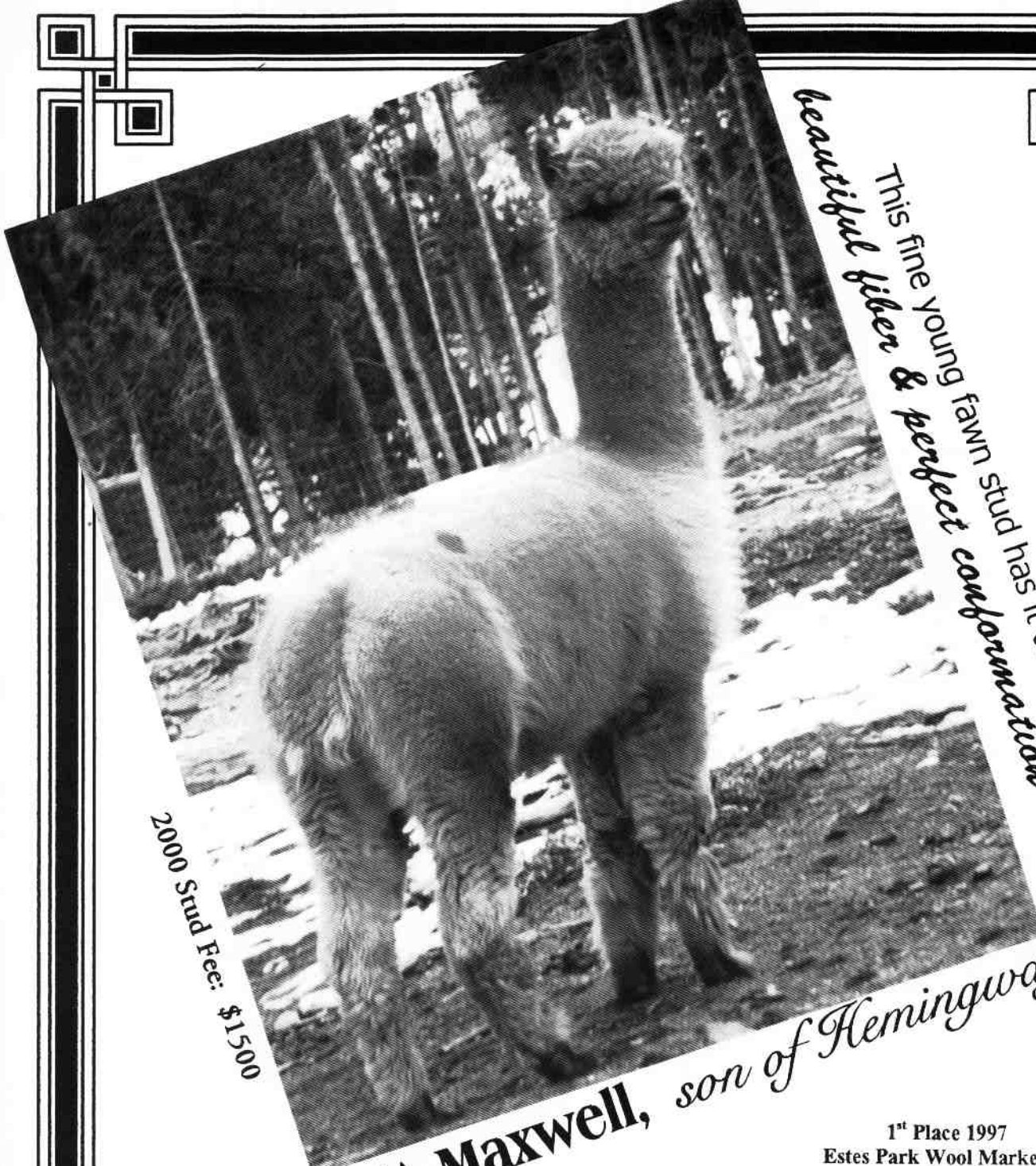
---

### Fiber Coop Booth, Fiber Pool? What is the Difference?

There has been some confusion about these two different groups. The following is an excerpt from a letter the owners of the Fiber Pool wrote to one of our members. Sharon and Karen agreed to share this in the hope that this will explain how these two organizations differ.

"...explains how the Fiber Pool works. Sharon Beacham and I own the business. The name was given to us as a regional name. There is also a Midwest Lama Fiber Pool and an Eastern Lama Fiber Pool. We have heard rumors about another one developing in California, but I do not know the name of it or any specific details. The Rocky Mountain Lama Fiber Pool is the one that has been most active for the longest period of time. We hope to one day put all of these regional pools together to form a National Lama Fiber Pool, but that will happen sometime in the future. There is much work to be done between now and then.

"The only connection that the Rocky Mountain Lama Fiber Pool has to the RMLA Fiber Coop Booth is that we are one of more than 30 consigners that sell llama and alpaca products from that venue. The Fiber Pool pays a commission just like other consigners. We also sell our products in many other fiber outlets around the United States. Many RMLA members have taken advantage of the opportunity to have their fleeces processed by us so that they have llama or alpaca yarn and handspinner's roving to sell in the Fiber Coop Booth."—Karen Kinyon



*This fine young fawn stud has it all:  
beautiful fiber & perfect conformation*

*2000 Stud Fee: \$1500*

*NWA Maxwell, son of Hemingway*

1<sup>st</sup> Place 1997  
Estes Park Wool Market &  
AOBA National Show-Pueblo

*Visit Maxwell at:*

Lone Star Alpacas  
LoneStarAlpacas.homestead.com  
Email: elreardon@aol.com  
Fax: (303)258-3706  
Bob Reardon & Laird Reardon  
(303)258-0235 & (214)522-9689

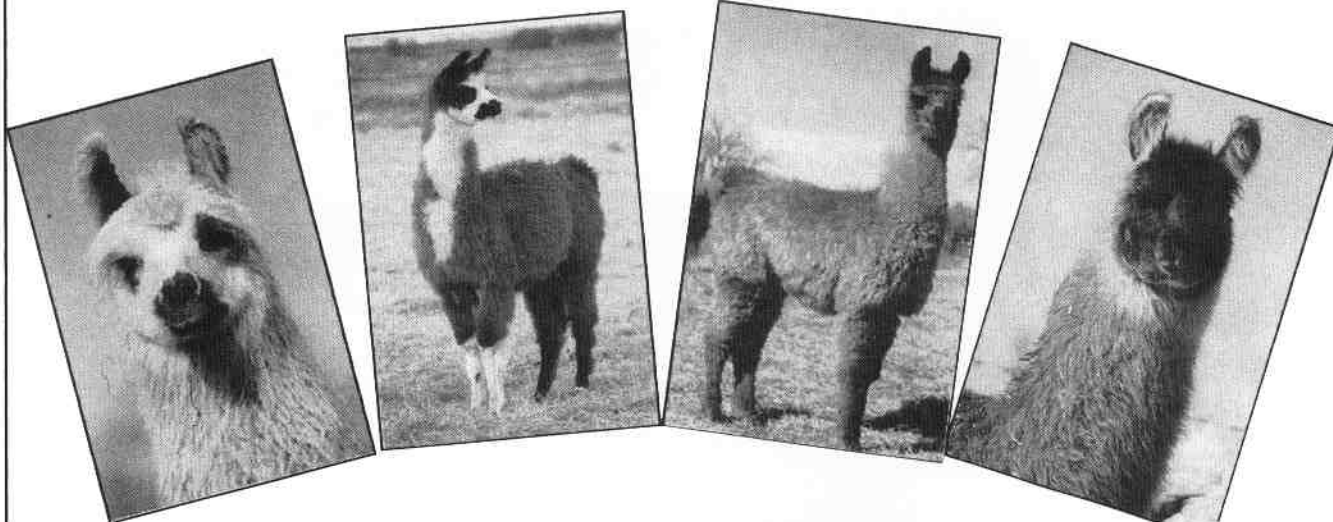
Cottonwood Farm Alpacas  
rockisland.com/~newmoon/alpaca.html  
Email: alpacas@frii.com  
Fax: (970)482-0350  
Michael & Robbie Guidry  
(970)482-0350



# Llamarage

BREEDERS OF CHAMPION SHOW LLAMAS

*We have what you're looking for!*



*Just a few of the beautiful youngsters we have available — Come visit us and pick out your next champion!*



Always a large selection available from our herd of over 70 quality llamas — from companion (pet) quality, to potential packers, to top quality show/breeding stock. Weanlings to adults.

Prices starting at \$600

Stud service to: ALSA Halter & Get of Sire Champion Gandy Dancer  
ALSA Halter Champion GLL Java  
1/2 Chilean MGF Nottingham  
1/2 Bolivian MW Liliano  
Bolivian/N. Amer. Cross Llamarage's Neon Moon

Joe & Mary Beth Hartsough  
P.O. Box 574

970/785-2463  
Platteville, Co. 80651

E-mail: [Llamarage1@aol.com](mailto:Llamarage1@aol.com)

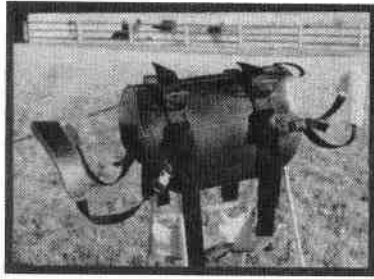


Dick & Linda Reichle  
2765 Hwy 91 N.  
Dillon, MT. 59725

(406) 683-2228  
Orders 888-846-5262  
Fax (406) 683-2121  
Email olliellamas@mcn.net

Catalog olliellamas.com

Largest Manufacturer of Llama Gear and Tack  
The chances are if we don't have it or can't make it, you don't need it!



**Ollie Llama Pack Saddle**  
OLPS401 - \$240.00



**Ollie Llama Panniers**  
OLP411 - \$200.00

**Single Top Pack**  
TP409  
\$45.00  
Call For Colors



**Rain Fly**  
RF516 - \$25.00

Many colors  
Give us a call



**Cooler System**  
CS405 - \$80.00

Great for lunches and picnics

NEW!!!!!!!



**Beginner's Pack Saddle**  
BPS465 \$165.00

This is a starting pack or can be used in all ALSA Shows

NEW!!!!!!!



**Cross Halter**  
CR512 - \$12.50



**Ring Halter**  
RH513 \$9.50



TOS703 - \$4.50

Buy 5 or more and get 20% off

**STALL MATS give us a call**



**Baby Blanket**  
With Thinsulate  
BB701 - \$ 28.50

**Show Cover**  
SC723 - \$35.00



**Safari Brushes**



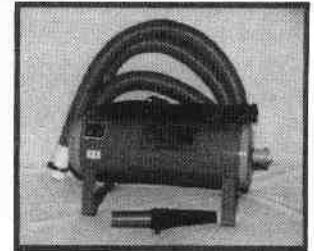
**Baby Sling**  
BB701 - \$12.50



**Heiniger Shears**  
HLAS298  
\$289.00  
**Blade Guides**  
\$7.50



**Mesh Feed Bag**  
MFB719  
\$25.00



**Circuiteer II**  
CII790 - \$288.00

**Books**

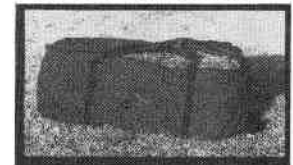
- Caring for Llamas & Alpacas - \$23.95
- Llamas on the Trail - \$15.00
- First Aid for Llamas & Alpacas - \$19.95
- Packing with Llamas - \$11.95
- Spinning Llama & Alpaca Wool - \$12.00
- Llama & Alpaca Neonatal Care - \$24.95
- Many others including children's books



**Dutch Ovens**  
12" \$52.00  
10" \$35.00



**Poop Scoop/Rake**  
\$20.00



**Bale Bag**  
BB718 - \$65.00  
Call us for colors or for Ranch Colors

EARS - \$9.50



**Magic Shears** \$16.50  
**Serrated Shears** \$21.95

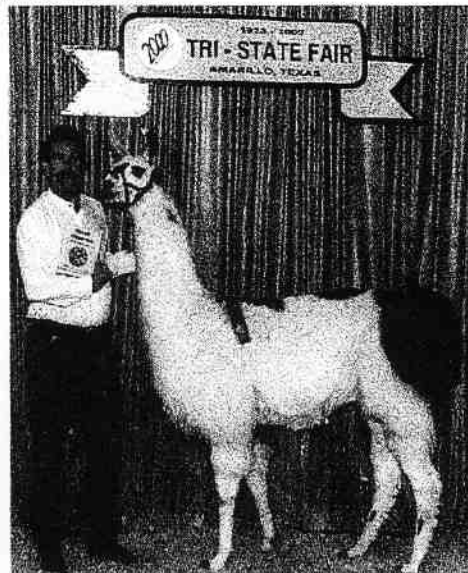


**What a Guy!!! What a Year so Far!!!**  
**PHF Picacho's Rambutan**  
**D.O.B. June 9, 1996**  
**Peruvian Picacho x PHF Delphinium**

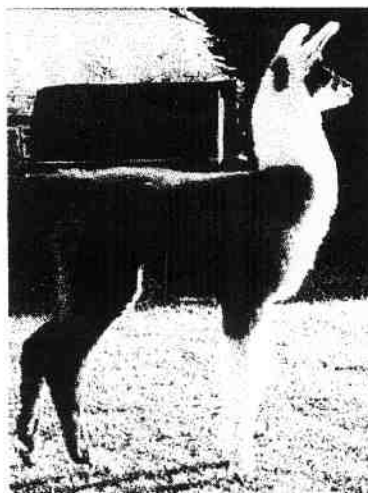


*Versatility  
 Champion  
 LOCC Fall  
 Classic*

*Best of Show  
 Vernal, Utah*



**A heartfelt Thank You to John & Sharon Beacham for allowing us to purchase Rambutan in 1998. We always knew his was special and 2000 has proven it! Just look what he can do with a little help from his girlfriends!!!**



**Rambutan's Dakota Dream (M)**  
**D.O.B. 4/26/00**

**PHF Picacho Rambutan x**  
**Perdita's Cotton Candy**

**PHF Picacho's Rambutan**  
**Breeding Fee: \$500.00**

**Grand Champion, Tri-State Fair, Lt/Med Wool**  
**Grand Champion, Vernal Utah, Lt/Med Wool**  
**Performance Champion, LOCC Fall Classic**  
**Reserve Performance Champion, Vernal Utah**  
**NWSS, 1st Place, Lt/Med Wool Adult**  
**Estes Park Wool Market, 1st Place Advanced PR**  
**& More**



**Rambutan's Pikachu (F)**  
**D.O.B. 7/13/00**

**PHF Picacho's Rambutan x**  
**Candy Cluster**

**Larry & Deanna Lewellyn**  
**FootHills Llamas**  
**(303) 979-4815**  
**fhllamas@aol.com**

# Llama Laffs

---

**Llamas and alpacas, because of their intelligence, often seem to present unusual challenges. What special challenges have your llamas presented to you, or in what unusual predicaments have they become involved?**

My husband was grooming one of the llamas at the Kansas State Fair - our corrals were away from the arena and he was outside - anyway, a woman came up to him and asked "What time do you show?" He replied without hesitation, "I don't know if she entered me as a breeder or non-breeder." Got a few laughs on that one.—Patti Morgan

Our first small llama barn was along a busy highway some distance from our house, and we started receiving calls that pranksters were playing with the lights. After a brief stakeout we caught one of our new weanlings flipping the barn light switch.—Dan Schreiner

Kiti, a first time mom alpaca, was out in the field with her little white three-day old cria. Somehow the baby got left on the opposite side of the six-wire fence from her mom and the rest of the herd. The baby put her head through the fence to try to return to mom, but that didn't work, so she backed up and ran straight at the fence. Throwing herself over the third wire and landing in a heap on the ground, she looked very surprised when she was not on all fours. From that point on she stayed with mom and discovered the gate, which she now runs merrily through as she ventures away and returns. —Margaret Valvo

We have a big girl who finds field fencing a challenge to be overcome on the way to the greener grass on the other side. One day she found she could fit her head through one of the larger squares. Her real challenge came, though, when she attempted to put her head back in through another large square! After pulling/pushing her back in the proper way (and wearing a lot of green), we decided to add another row of field fence, upside down this time, and she hasn't done that again. Now she just leans over the top.—Teri Nilson Baird

**How do you name your llamas? Or what special pet names have you relegated to a special animal that reflects their specific behavior? (omit the "B" word :)). Anyone fortunate enough to have toured Richard and Kay Patterson's herd**

**in the "early llama days" can recall many, many humorous names that he hung on his llamas to differentiate them.**

I name crias according to their personality. I have a little female cria that was born last Spring. Even though she was the youngest of five, she was always out front of the group when they ran and romped. She flies like the wind! I know there is something extra-special about her, I just haven't discovered it yet. We named her "Windsong."—Sally Bacus

I have a little female cria that is always happy & peppy, so I nicknamed her "Bubbles". My husband called home and asked what a new little male cria looked like. Unable to describe him, I just said "knock down gorgeous!" His name now is "Gorgeous George". One year I had a first time mom with a new cria. Mom wouldn't let the baby nurse. Every time the baby got under her, she would kick and knock the little one over. The baby would just get right up and go back under. The cria's name is "Persistence." She's now four, a wonderful mother, and has her own cria.—Sally Bacus

We like sports so have Chipshot, Chip-In, Jump Shot and Fast Break.—Patti Morgan

Tyra of the Ark became "Tyra the Tyrant". This 420-pounder knew more about being the grand-dame of the herd than any llama known. When I entered the female pen every day she always gave a loud and long warning call to her herd, "Run for the hills, the veterinary Gestapo is here!" While the female herd escaped she would march right up and go nose to nose with me just to prove who was boss. With the Girls' Ranch girls she was lovely, understanding, willing, gentle, and compliant. What a gal.—Karen Reyer

One of our llamas is named Whiplash. As he runs, he "keeps time" by rhythmically dipping his head down, bringing it back up, then back down, etc. It looks like one of those moves that would definitely give us whiplash if we humans tried it! We owe this very appropriate moniker to the ingenuity of the breeder, Ray Record of Cedar Edge Llamas. Thanks, Ray! —Maggie Merrill Brown

We name all the crias from one mother after casinos. It started out as a joke (well, the whole llama thing did, too) but has worked for us!—Teri Nilson Baird

And finally, Ron and Lougene Baird name theirs after Grateful Dead songs or lyrics.

# Neonatal Clinic Report

Barb & Bob Hance, Hance Ranch

---

Thursday, October 19, 2000, we were privileged to assist Dr. LaRue Johnson, DVM, with his 60th Neonatal Clinic for camelid owners. Sharon and John Beacham were our gracious hosts, and their home provided an ideal classroom. The "wet lab" was to be in their garage, but since the weather was so great, we moved into the driveway. There were 16 owners and one veterinarian learning as much as they could about birthing, breeding, nutritional needs of moms and crias, and lots more. Dr. Johnson came equipped with several hundred slides to help us understand the material. The lecture lasted from 8am to 2pm with a break for lunch, followed by the hands on "wet lab." Deceased crias in artificial wombs are placed in all kinds of positions representative of dystocias. Gowned and gloved, the "owner student" with one hand tries to determine how the cria is placed and then attempts to reposition it for a successful delivery. Each had a chance to try at least four of these, set up by the doctors. Then, in teams, they change the positions to test each other. Then back to the classroom until 4pm.

Dr. Johnson brought with him an assistant, Dr. Heidi Sheppard, who is doing her internship at CSU. The first "Neonatal Clinic" was suggested by Sukey Dewey (a former RMLA member) about 11 or 12 years ago. Dr. Johnson said if it were to be done, there could only be six students and it would have to be done at CSU. Now many years later, he is traveling the world (Australia, England, Canada and the USA) and teaching upwards of 20 people in most clinics, with many veterinarians attending these clinics. He is next headed to Vermont and then down to North Carolina. Unfortunately for camelid owners in the Rocky Mountain region and elsewhere, Dr. Johnson is mostly retired from his work at CSU, and claims he will stop giving the clinics when the number of clinics matches his age. Most importantly, there is no camelid specialist to step into his teaching position at CSU.

---

## A Newbie's Impression

Teri Nilson Baird, Broken Windmill Ranch

Elizabeth, Colorado

---

The amount of information which is presented at this clinic is staggering; luckily, Dr. Johnson provides a hand-out for those of us who were too absorbed in the material to even take notes! I was a little late, so I missed the introduction of all the attendees and the introductory slides. In some ways, the term *neonatal* is a little misleading as much of the clinic also focuses on breeding issues and health management of a pregnant female.

I knew in advance to be prepared for the dead fetuses; however, handling dead animals has always been a bit of a problem for me. (Ask my husband, who had to bury one of my cats when we were dating; I couldn't even pick her up in a towel. I can't even throw dead mice out without gloves and a shovel.) I had thought perhaps I could force myself to participate in the wet lab, but when push came to shove (no pun intended here), I just couldn't do it. I guess I am not the first person this has happened to, because Dr. Johnson carries with him a fake but anatomically correct stuffed cria. Thanks to Barb Hance for dragging me in the house when she did; she set up the stuffed llama in all the same positions and I was able to reposition it just fine in the webbed "llama womb." Do I think I could do this with a live llama emergency? I think I could, because at least the cria would be warm!

One of the people I gave the registration information to is Dr. Leon Anderson, our local vet here in Elizabeth. I know now that the first of my five "P's" is to phone my vet and at least get him on his way! He helped the other clinic participants learn the repositioning techniques and proved an able and worthy student (much better than I).

I would highly recommend this clinic, even if you aren't inclined to get in there and help the laboring mother out. It is no substitute for calling a vet, but teaches you when to make that call and how to help while the vet is on his or her way.

# A Scary Delivery *or* Do You Really need to take that Neonatal Class?

Karen Kinyon, Double K Diamond Ranch

Fort Collins, Colorado

It was a gorgeous Fall day, and I had been watching Doe, one of our llamas, for about an hour because she was acting like she was in labor. She was due, but not for 12 days yet, so I wasn't sure if this was the real thing.

After about an hour, one little foot was out. When next I looked, the foot was back inside. I was worried, but waited one more hour to call the vet. We are fortunate to live close to CSU's Veterinary Teaching Hospital and Dr. LaRue Johnson is on staff there. He called me right back and said, yes, I did need to be concerned and that I may have to go inside and check things out.

I had taken Dr. Johnson's Camelid Neonatal Seminar a couple of years ago and had my "Baby Delivery Bag" prepared. I had a long plastic glove, a shorter latex glove, Betadine scrub and a sterile lubricating gel that I had put in the bag sometime ago, never really anticipating their use.

While Dr. Johnson was on the phone talking to my husband, Bob, I caught Doe and put her in the chute. She was straining hard and nothing was showing at all. With Bob relaying directions from Dr. Johnson, I double gloved, scrubbed and put my fingers into Doe's lubricated vulva. I was scared of what I would find there, but moved forward. I was only in up to my knuckles and felt a tiny warm nose that moved. At that point, I knew I could do this and continued to feel around but felt no feet. I told Bob and he relayed that information to Dr. Johnson. Dr. Johnson told us to push the head back and reach downward to find the feet. They were both tucked under the baby's chin. I found one and pulled it forward; as I did, the other popped up too. So now we had the correct presentation of nose and toes. Doe was pushing hard. The little one was on his way but we still needed to rotate him slightly to come through the birth canal. Only one more small turn and the cria was completely out, laying on the ground and flailing around. The umbilical cord was already severed so Bob continued to talk to Dr. Johnson, updating him on what was happening. I carried the baby and Bob brought Doe back into the llama pen where we laid the baby in the sun. Soon Doe and baby were bonding with all their llama friends surrounding them.

It was an incredible experience because I felt scared, worried, and proud all at the same time. We had delivered a very pretty, 27 pound, Appaloosa spotted male baby successfully and both Doe and baby were doing great. I was able to handle this situation because of Dr. Johnson's Camelid Neonatal Seminar. I was grateful that he had been at the Vet Hospital when I called and was able to talk us through the entire situation. And Thank Goodness for a husband who would stand by me and communicate when I had no hands free to hold the phone!

Next time there is an opportunity to take this seminar, do it. Prepare your "Baby Delivery Bag" so that you are also ready to help if you have a problem birth. The information is invaluable and helps make us all much more able to take good care of our llama buddies.



## WINDING TRAILS LLAMAS

Champion Llamas from ALSA Champion Bloodlines

**FOR SALE • Show Llamas • Working Llamas  
• Companion Llamas**

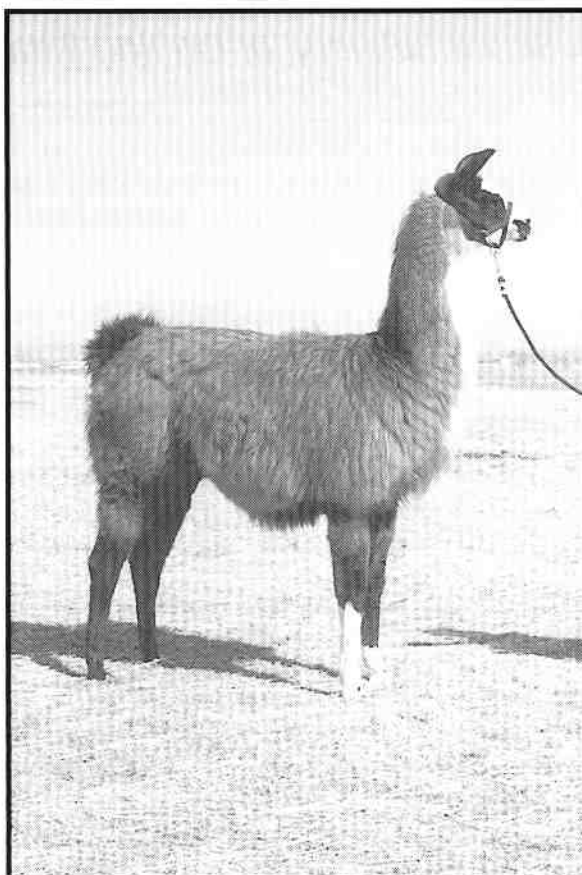
**Packing • Orientation Classes  
Hikes • Outings • Lunches  
Rentals Available**

**Call or Visit our Website:**



**Jan Redenbarger**  
Winding Trails Llamas  
P.O. Box 7096  
Crescent Branch  
Golden, CO 80403

(303) 642-0140  
[www.windingtrailsllamas.com](http://www.windingtrailsllamas.com)



# Caring for Llamas and Alpacas

A world renowned RMLA publication. Orders shipped around the planet... (and elsewhere!)

To Order:

<http://www.rmla.com>

or

Send your name, address, city, state and zip and

\$23.95 plus \$4.00 S & H

(CO residents add 3% sales tax) to:

Keith & Katy Wegner

RMLA Bookstore

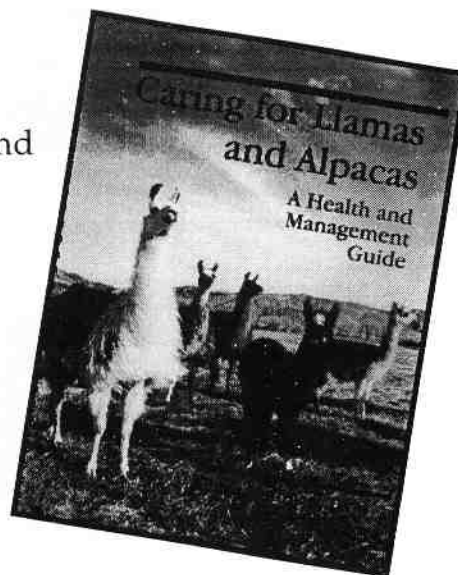
17190 W. 57th Place

Golden, CO 80403-1113

(303)273-9445

e-mail: [k2wegne@ibm.net](mailto:k2wegne@ibm.net)

ISBN:0-9622768-2-0



## SWITZER LAND ALPACAS

ALPACA *babies*

ALPACA *books*

ALPACA *hats*

ALPACA *jackets*

ALPACA *scarves*

ALPACA *shawls*

ALPACA *sweaters*

ALPACA *wool*

ALPACA *yarns*

LLAMA *yarns & roving*

*Special equipment and tools  
for carding, spinning, and weaving*

Chris Switzer • Box 3800 • Estes Park, CO 80517  
(970) 586-4624 • FAX (970) 577-0775

COME VISIT  
FARM &  
STUDIO



MAIL  
ORDERS  
AVAILABLE

ROCK - n M Llamas



"Home of One-Eyed Jack"

**Patti Morgan**

October - April  
12120 282nd Rd.  
Arkansas City, KS 67005  
316-442-4996 fax: 316-442-1590

May - September  
PO Box 933  
Buena Vista, CO 81211  
719-836-4510

[www.rock-n-mllamas.com](http://www.rock-n-mllamas.com)

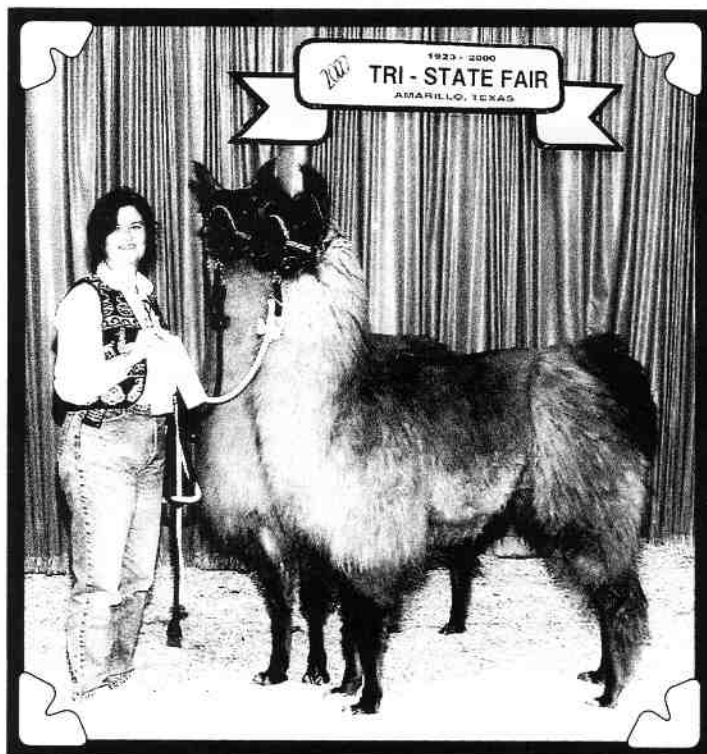
C&M LLAMAS



FALCON, CO  
(719) 683-2834

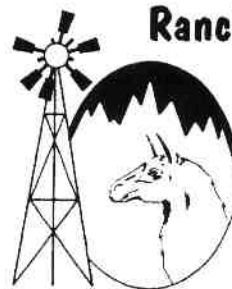
Breeding • Boarding • Babies  
Grooming • Shearing

Mark & Cathy Witttrup  
5920 Renneberger 80831



Broken Windmill Sundowner and Traveler's Highwayman  
with proud owner Teri Baird of Broken Windmill Ranch

Broken Windmill  
Ranch



Teri and Phil Baird  
28825 County Road 5  
Elizabeth, CO 80107  
303-646-4373

Just LOOK  
at our "Bookends"  
NOW!





## Quality Llama Products

"Serving the alternate livestock industry since 1979"

Everything you need for healthy, happy llamas and alpacas!

Halters  
Blankets  
Scales  
Barn Supplies  
Medical Supplies  
Books  
Videos  
Fiber Supplies  
Gift Items  
**Lama™ Brand Products**

**FREE 96 PAGE CATALOG**

Quality Llama Products  
Ed & Nancy Chlarson  
33217 Bellinger Scale Rd  
Lebanon, OR 97355

ph: 800-638-4689

fax: 800-580-5262

e-mail:

sales@llamaproducts.com  
on line

www.llamaproducts.com

**Ask about our free Guide for New Llama and Alpaca Owners**

## Membership Report

Bob and Barb Hance, Membership Chairs

As of October 1, 2000:

The RMLA memberships include folks from 25 states, Canada, England & Italy. We have 32 Life memberships, 39 Youth members, 169 Ranch memberships, and 175 Individual members. Life and Ranch memberships usually represent two members each.

Over 300 of our members have e-mail addresses, and 65 members have their own web sites.

Our members own 7085 llamas and 492 alpacas.

The membership committee has processed 12 "Inquiries" and 66 "New members" in the past year. Nearly 23% (94) of our members volunteer to help on one of our very important committees, and 27 members have volunteered to serve on more than one committee. RMLA is most grateful for the assistance these volunteers provide.

As our new membership year approaches, we would beg you to consider being a "volunteer", this is your organization, operated by all volunteers. If you feel you can help out, please check one or more of the committee volunteer spots on the 2001 Membership Form.

The 2001 Membership Form is in the insert in this issue of the Journal, please re-new before December 31, 2000. Thank you all for a great year.



### Rocky Mountain Llamas

See the best llama equipment online:  
<http://www.rockymtllamas.com>

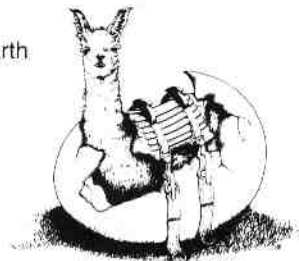
*New Items! All pictures in color.*

Halters & Leads for every llama activity  
Packing Gear ~ Training Videos & Books ~ Gifts  
Grooming Supplies ~ Driving Harness & Carts  
Show Sheets, Warm Coats & Raincoats  
Special farm items to make life easier

Phone/fax: 303-530-5575 e-mail: [questions@rockymtllamas.com](mailto:questions@rockymtllamas.com)

Bobra Goldsmith ~ 7202 N. 45th St. Longmont, CO 80503

Charlie & Sandy Hackbarth  
PO Box 548  
La Veta, CO 81055  
(719) 742-3447  
(800) 767-7479



### Mt. Sōpris Llamas Unltd.

*Sopris Pack Systems • Llama Supplies*

# RMLA's Newest Members

Bob and Barb Hance, Membership Chairs

Wendy Anderson  
3670 E. 128th Place  
Thornton CO 80241-2138  
(303) 451-8182  
kidsmom@uswest.net

Molly Bearden (Junior)  
147 Navajo  
Sheridan WY 82801-5927  
(307) 672-6874  
sixbeardens@juno.com

Shylan Bearden (Junior)  
147 Navajo  
Sheridan WY 82801-5927  
(307) 672-6874  
sixbeardens@juno.com

Kevin T. Bowman  
Paula Bowman  
Mountain View Alpacas  
9989 N. Delbert Road  
Parker CO 80138-6824  
(303) 840-4546  
FAX(303) 840-3093  
bowmans@mountainviewalpacas.com

Linda Cain  
526 Red Tail Trail  
Livermore CO 80536-9509  
(970) 482-7535  
lsc@hplsc.fc.hp.com

Kelly F. Calkins  
Trinity Farm  
19172 N County Road 15  
Wellington CO 80549-2033  
(970) 568-0533  
FAX(970) 568-0190  
spinner@trinityfarm.com  
www.trinityfarm.com

Ben Chambers (Junior)  
Llamarado  
159 Cove Drive  
Westcliffe CO 81252-9550  
(719) 783-2949

Jessica Lynn Conley (Junior)  
2185 S. County Road 193

Byers CO 80103-9409  
(303) 822-8511

Kelley Fallin  
210 E. 200 S.  
Hyde Park UT 84318-  
(435) 563-8503  
kelleygem@aol.com

Lynnette Gandl  
Wandrlyn Farm & Kennels  
26620 Pleasant Park Road  
Conifer CO 80433-7704  
(303) 838-4663  
lynnette@wandrlyn.com

Linda Gardner  
Ed Heintz  
Blue Moon Ranch  
14594 S. Rose Canyon Road  
Herriman UT 84065-  
(801) 253-0774  
FAX(801) 253-0710  
linda@bluemoonranch.net  
www.bluemoonranch.net

Beth Harz  
Wild Wind Llamas  
P.O. Box 128  
Florence CO 81226-0128  
(719) 784-3603  
FAX(719) 784-9693  
acsolar@earthlink.net

Dick Hauxwell  
Priscilla Hauxwell  
Sundance Llamas  
17531 South 4200 Road  
Claremore OK 74017-0937  
(918) 341-1520  
2h@accufax-us.com

Tami Horky  
71303 I Road  
Orleans NE 68966-6824  
(308) 473-4301  
thorky@swnebr.net

Cheryl Juntilla  
Wallace Juntilla  
La Chiripada, LLC

PO Box 1321  
Clifton CO 81520-1321  
(970) 434-9830  
FAX(970) 434-6092  
cajwdj@aol.com

Steve Langer  
Terry Brooks  
Sundance Stock Farm  
4025 SE Arnold Lane  
McMinnville OR 97128-8400  
(503) 472-3391

Jean Lovelace  
34100 Hwy 184  
Mancos CO 81328-9131  
(970) 882-2544  
johnjean@fone.net

L. J. Maki  
Crow Creek Llamas  
1631 Crow Valley Road  
Bailey CO 80421-2304  
(303) 838-1839  
FAX(303) 838-1242  
makij@flash.net

Wanda Milton  
23520 E. 157th Avenue  
Brighton CO 80603-3852  
(303) 659-8757  
FAX(303) 655-1499  
wmilton@uswestmail.net

Katy Nelson (Junior)  
Nelson Outfitters  
900 Big Goose Road  
Sheridan WY 82801-9452 (307)  
672-6996  
noutfit@huntwyoming.com  
www.huntwyoming.com/nelsnhnt.html

Kelly Nelson (Junior)  
Nelson Outfitters  
900 Big Goose Road  
Sheridan WY 82801-9452 (307)  
672-6996  
noutfit@huntwyoming.com  
www.huntwyoming.com/nelsnhnt.html

Julian Nicholson  
Diane Nicholson  
Nicholson Llamas & Alpacas  
4061 Canyon Ridge N.  
Twin Falls ID 83301-8176  
(208) 734-5917  
FAX(208) 734-5917

Deberah Ponczek  
16625 Pine Valley Road  
Pine CO 80470-8808  
(303) 816-1961

Gladys Russell  
Wellington Outback  
12130 N CR 9  
Wellington CO 80549-1959  
(970) 568-7610  
baracuda@frii.com

Tim Segar  
Susan Puls  
Tierra Linda Llamas  
291 Saturn Drive  
Pagosa Springs CO 81147-8859  
(970) 731-9945  
FAX(970) 731-9927  
tsegar@frontier.net

Elaine Sipes  
4300 Mill Creek Ct.  
Fort Collins CO 80526-3444  
(970) 223-4958  
ridethedream@cs.com

Melissa T. Sullivan  
James Sullivan  
Firefly Farm  
67344 Trout Road  
Montrose CO 81401-8670  
(970) 249-5714  
sullijm@rmi.net

Heather A. Trujillo (Junior)  
1457 Parker Avenue  
Sheridan WY 82801-1111  
(307) 674-5288  
trujillo@cyberhighway.net

Caleb Van Deusen (Junior)  
2422 CR 341  
Westcliffe CO 81252-9704  
(719) 783-0316

Dawn Yates  
1800 Violet  
Boulder CO 80304-0606  
(303) 447-8515  
gyates03@spynet.com

#### Address Changes

Gorus aka Mike Brown  
HCR 74 Box 22628  
El Prado NM 87529-9530

Bon Burgess  
Cindy Burgess  
Feathers & Friends Farm  
764 Sunrise Circle  
Woodland Park CO 80863-7723  
(719) 687-2169

Alaine Byers  
Indian Peaks Ranch  
P.O. Box 1022--3328 CR 450  
La Veta CO 81055-1022  
(719) 742-6126  
FAX(719) 742-6126

Aubrey Eggertsen (Junior)  
8289 S. Fillmore Way  
Littleton CO 80122-3461  
(303) 663-8723

Carolann Evans  
Kimmel Evans  
Lladyhawk Llamas  
15102 N. 83rd Street  
Longmont CO 80503-9217  
(970) 532-1028

Brianna Livengood (Junior)  
Llamarado  
PO Box 128---715 CR 241  
Westcliffe CO 81252-0128

Rhonda Livengood  
Llamarado  
PO Box 128---715 CR 241  
Westcliffe CO 81252-0128

Pat Lowe  
Bobby Lowe  
High Mountain Llama Ranch  
1357 M 1/4 Road  
Loma CO 81524-9714

Sarah Moody  
Kathy Walker  
Zia Llama Co.  
P.O. Box 5861  
Vail CO 81658-5861  
(970) 328-1110

Beverly Mulholland  
539 Ridgestone Court  
Grand Junction CO 81503-4412

Colleen Turner  
Windcircle Llamas  
P.O. Box 1102  
Cottonwood AZ 86326-1102

#### E-Mail Changes

Jack Bennett  
Linda Vick  
Rendezvous Llamas  
rlamas@spiritone.com

Mr. Andrea D'Orazio  
andreadorazio@uni.net,bcp@uni.net

Kathy McKinley  
Mesa Llamas & Alpacas  
mesallamas@aol.com

#### E-Mail Correction

Joe Payne  
Sandra Payne  
Sanchez Creek Llamas  
joecpayne@msn.com

#### Additional E-Mail

Sue Grimm  
mtnmama685@aol.com  
Wes Mauz  
Mary Mauz  
Timberline Llamas, Inc.  
siltranch@netscape.net

#### Phone Number Correction

Sue Grimm  
(303) 569-2842

## The RMLA Classifieds

**Estate Sale** – Beautiful medium wool males and females, all colors. All registered except yearlings. Two studs blood typed and proven. Females with nursing crias (4). Female have been rebred. Three 2-year old partially trained pack males. \$500 - \$2500. Miscellaneous care equipment. Betty Buttman, Del Norte, CO. 719-657-2566.

**Llama Herd Reduction Sale** – Beautiful heavy wool males & females, all colors, 1/2 to 3/4 Chileans and 1/2 to 3/4 Bolivians, great bloodlines – males

\$250-\$350; females \$500-\$700. Free rebreeding with any female purchase. Moonstar Llamas, Guffey, CO – Rodney Bryan. 719-689-9760. (11/01)

**Spinning Llama and Alpaca New 2<sup>nd</sup> Edition** now available – 6 additional pages, including 2 new projects. \$12 + \$2 shipping + 45¢ CO tax. Chris Switzer, Box 3800, Estes Park, CO 80517. (11/00)

### Journal of the Rocky Mountain Llama and Alpaca Association Advertising Information

effective August 2000

\* **All art should be camera ready.** Ad design cost is \$30 per hour, 1 hour minimum. Contact Marilyn Arnold at 303-841-5126 for more information.

\* Black and white photographs are preferred.

\* This publication is printed in black and white, Line screen is 115 lines/inch.

\* Each May a promotional issue is produced. The outside covers and centerfold advertisement is printed with a base color determined by the RMLA Board of Directors. Additional copies of this edition are printed for distribution to the public at llama and alpaca events.

\* Mail all advertising materials to Marilyn Arnold, 11483 E. Ponderosa Lane, Franktown, Colorado 80116-9319. Include check payable to RMLA for the amount of the ad plus estimated design costs for art which is not camera-ready. **Full payment must accompany all advertising submitted.**

Classified Ad rates, Members \$5 for up to 50 words per ad. Non-members, \$10 for up to 50 words per ad. Additional words priced at .15 per word for each word over 50.

**Advertising Deadlines:**  
**March 15 (for May issue), June 15,**  
**September 15, December 15**

### Advertising Rates

All rates per issue	RMLA Member	RMLA Member	Non-Member	Non-Member
Ad Sizes	1-2 issues	Same ad 3 or more issues	1-2 issues	Same ad 3 or more issues
Business Card	\$12	\$12	\$18	\$18
1/4 Page	\$24	\$21.60	\$36	\$32.40
1/3 Page	\$36	\$32.40	\$54	\$48.60
1/2 Page	\$48	\$43.20	\$72	\$64.80
2/3 Page	\$66	\$59.40	\$99	\$89.10
Back Cover	\$60	\$53.80	\$90	\$81
Full Page	\$78	\$70.20	\$117	\$105.30
Inside Front Cover	\$96	\$86.40	\$144	\$129.60
Inside Back Cover	\$96	\$86.40	\$144	\$129.60
Promotional Issue Rates: Same Color as Journal Cover				
Full Page per page (Centerfold)	\$162	Different Color Add \$85 color change charge	\$243	Different Color Add \$85 color change charge
Back Cover	\$138		\$207	

## Our Advertisers

Broken Windmill Ranch	29	Ollie Llamas	23
C & M Llamas	29	Pheasant Hill Farm	36
Cache La Poudre Minerals	15	Quality Llama Products	18, 26
Caring for Llamas and Alpacas	28	Red Barn	34
Cottonwood Farms	21, 34	Rock'n'M Llamas	29
Double J Llamas	16	Rocky Mountain Llamas	30
Foothills Llamas	24	Rocky Mountain Lama Fiber Pool	11
Hance Ranch	34	Sanchez Creek Llamas	2
Llamarage	22, 34	SwitzerLand Alpacas	29
Lockwood Dreamstar Llamas	34	Tall Tail Llamas	34
Lost Boys' Ranch	9	Trout Creek Llamas	35
Mt. Sopris Llamas, Ltd	30	Winding Trails Llamas	28
National Livestock Agency	18		

### Red Barn Fiber Processing

Designed for your individual needs



Send SASE for free brochure  
No order too small or large

#### Curt & Susan Boyes

5401 Norwood  
Loveland, CO 80538  
970-669-6106

- Custom Carding
- Picking
- Washing
- Handspinning
- Blending
- Llamas
- Raw and Processed Wool

E-mail: Redbarn1@suno.com

3709 W. Cty Rd. 50  
Fort Collins, CO 80521

Michael & Robbie Guidry  
(970) 482-0350

### Cottonwood Farm Alpacas

Peruvian & Chilean Huacayas  
[www.rockisland.com/~newmoon/alpacas.html](http://www.rockisland.com/~newmoon/alpacas.html)

Sales  
Breeding

Fiber  
Boarding

E-mail: [alpacas@frii.com](mailto:alpacas@frii.com)

# Lockwood Dreamstar



- Breeding
- Sales
- Wool

Dave & Sandy Lockwood  
13342 Riley Peak Rd.  
Conifer, Colorado 80433  
303-838-9554

# Llamarage

BREEDERS OF CHAMPION SHOW LLAMAS

Joe & Mary Beth Hartsough  
Platteville, CO 80651

P.O. Box 574  
970-785-2463



## Tall Tail Ranch

Quality Llamas &  
Exotic Peafowl



Rob & Jill Knuckles  
(970) 241-4112

2970 A-1/2 Road  
Grand Junction, CO 81503

# HANCE RANCHA

ALPACAS

FIBER

LLAMAS

OWNERS

ROBERT & BARBARA HANCE

11818 W. 52ND AVENUE

WHEAT RIDGE CO 80033

(303) 422-4681

FIBER ARTIST

MARY HANCE

11855 W. 52ND AVENUE

WHEAT RIDGE CO 80033

(303) 467-3261

Email: [hancelama@att.net](mailto:hancelama@att.net) Web: <http://home.att.net/~hancelama/>

# Trout Creek Llamas

Bolivian, Chilean, Canadian  
and domestic bloodlines

YOUR TYPE OF ANIMAL –  
FROM PET TO SHOW QUALITY

GUARD ANIMALS

MANAGEABLE AND GENTLE  
dispositions

CORRECT CONFORMATIONS

VISITORS ALWAYS WELCOME!



*AM I CUTE OR WHAT?*

BOARDING  
IN THE  
COOL ROCKIES

COMFORTABLE  
ACCOMODATIONS  
FOR YOUR  
MALES AND FEMALES



Rick & Jan Cummer (303) 647-2429  
P.O. Box 6848 • Woodland Park • CO 80866

*Eight Cadfael offspring at the Regional Show.  
All of them stood in the judge's final row.  
When each class was over, the owners wore a smile.  
It's fun to show a llama that was sired by Cadfael!*

## **Rocky Mountain Regional - 2000**

### **PHF Cadfael's Marengo - For sale**

*2<sup>nd</sup> Place - Two Year Old Medium Wool Male  
Top 5 - Medium Wool Males*

### **Cadfael's El Nino - owned by Jane Sheppard & Jerry Uherek**

*2<sup>nd</sup> Place - Adult Light Wool Male  
Top 5 - Light Wool Males*

### **CMW Cadfael's Cuddles - owned by Cathy & Mark Witttrup**

*2<sup>nd</sup> Place - Yearling Light Wool Female*

### **PVLR Shay Blanc - owned by Lougene & Ron Baird**

*3<sup>rd</sup> Place - Yearling Medium Wool Female*

### **PHF Cadfael's Banner - owned by Carolann & Kim Evans**

*4<sup>th</sup> Place - Two Year Old Medium Wool Male*

### **PHF Cadfael's Castellán - owned by Terry & Steve Lynch**

*5<sup>th</sup> Place - Two Year Old Medium Wool Male*

### **PHF Cadfael's Cobweb - For sale**

*5<sup>th</sup> Place - Two Year Old Heavy Wool Male*

### **Cadfael's Shooter of Lladly Hawk Llamas - owned by Evans**

*6<sup>th</sup> Place - Yearling Heavy Wool Male*



**Pheasant  
Hill Farm**  
Llamas

**John & Sharon  
Beacham**

2380 - 95<sup>th</sup> Street  
Boulder, CO  
80301-4937

**303-666-9437**  
(Denver area)

**1-800-465-2567**

**Fax: 303-604-1730**



### **Cadfael - ALSA Halter Champion**

*1<sup>st</sup> Place Get of Sire - NWSS & Wyoming State Fair  
2<sup>nd</sup> Place Get of Sire - LOCC Fall Classic  
3<sup>rd</sup> Place Get of Sire - Rocky Mountain Regional*  
**3 outside breedings left in 2001**

[www.phf-llamas.com](http://www.phf-llamas.com)

Email: [beachams@phf-llamas.com](mailto:beachams@phf-llamas.com)

RMLA  
11818 W. 52nd Avenue  
Wheat Ridge, Colorado 80033-2032

U.S. Postage  
PAID  
Kansas City, MO  
Permit No. 6035

Address Service Requested