

February
2000

Journal
OF THE RMLA

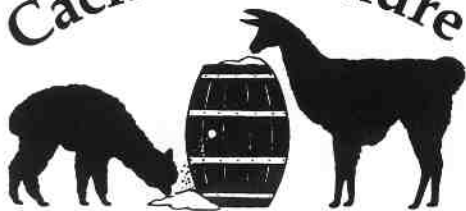


Rocky Mountain Llama and Alpaca Association

©1999 RMLA



Cache La Poudre



Insure Your Lamas' Health for Pennies per Day

Cache La Poudre Minerals are free choice supplements formulated specifically to balance your llamas' diet.

Includes these essential elements:

MINERALS

Call Now to Order
or receive a brochure
800-758-0825
970-493-2335

- ★ *Selenium*—recommended amount for selenium deficient areas
- ★ *Vitamin D3*—necessary for bone growth and tooth structure
- ★ *Zinc*—for immune function and healthy skin and fiber
- ★ *Vitamin E*—for selenium absorption, fights stress and disease

ECONOMICAL! Costs less to feed per day than other free choice minerals *or pellets* with comparable guaranteed analysis.

Supplement #1:

Diet: Late or non-irrigated summer, fall or winter pastures; feeding grass hay. Contains a 2:1 calcium/phosphorus ratio and additional Vitamin E.

25 lbs, \$29 50 lbs, \$55

Supplement #2:

Diet: Late or non-irrigated summer, fall, or winter pastures; feeding alfalfa or a grass hay low in phosphorus. Contains additional phosphorus and Vitamin E.

25 lbs, \$29 50 lbs, \$55

Supplement #3:

Diet: Spring or irrigated pastures; feeding alfalfa or a grass hay low in phosphorus. Contains additional phosphorus and recommended basic level of Vitamin E.

25 lbs, \$24 50 lbs, \$45

NEW 200 lb. PRICE: #1 or #2: \$198, #3: \$162 • PLUS SHIPPING



Ridge Mist Llama and Alpaca Supplies

The East Coast source for...

Request your
catalog today!

- halters and leads
- grooming supplies
- camelid books
- medical supplies
- packing equipment
- show supplies
- cria care needs
- gifts



612 N. Newcastle Road, Newcastle, ME 04553
(207) 586-6800 (800) 24LAMAS

Email: rmllamas@lincoln.midcoast.com

Website: www.llama-alpacasupplies.com

In this issue

The Fairplay Llama Race	14
Taro and the Clicker	17
Our Golden Gate Escape: A Party of Four	20
RMLA Happenings	
You Might Be an RMLA Member If	5
RMLA at the Grand Nationals	6
RMLA's Annual Meeting	7
Membership Report	16
Library Report	23
List of Our New Members	23
Fiber Booth Update	25
Estes Park Alpaca Show	25
Calendar of Events	26

A quick note from your Editor: Many apologies for your February issue being late. As some of you know, I spent most of January on crutches (getting better now!) and although my trusty laptop computer was upstairs with me, the trusty printer remained downstairs. Thanks for your patience while I was re-learning how to use the steps!

On our Front Cover: Our RMLA Youth Members in their fashionable RMLA vests were a big hit at the National show! **Bottom, Left to Right:** Lloyd Wamsley, Tara Schwartz, and Ben Riggs. **Top, Left to Right:** Brianna Livengood, Deidre Baird, Tiffany Coffman, Chandra Schwartz, Halley Coffman, and Adrienne Bergenfeld.

Congratulations to all our RMLA winners!

Rocky Mountain Llama and Alpaca Association

Board of Directors

President	President-Elect	Vice President	Secretary	Treasurer	Past-President (non-voting)
Bruce Ellis	Larry Lewellyn	Jerry Dunn	Jill Knuckles	Lougene Baird	Bob Riley
10725 E. Camelot Dr. Franktown, CO 80116-9471 303-688-9466 bee@bee.com	10715 W. Belleview Littleton, CO 80127 303-979-4815 Larrylew2@aol.com	14550 W. 50th Ave. Golden, CO 80403 303-277-1129 (voice and fax) beartrak@gte.net	2970 A 1/2 Road Grand Junction, CO 81603 970-241-4112 talltailllamas@bigplanet.com	2210 Pine Wood Road Sedalia, CO 80135 303-688-5445 (voice) 303-688-1887 (fax) lougene@att.net	PO Box 487 Louisburg, Kansas 66053

Committees

Committee	Liaison	Chairperson	Telephone	E-Mail Address
Annual Conference	Baird/Dunn	Jan Redenbarger	303-642-0140	jredenba@ix.netcom.com
Bookstore	Lougene Baird	Keith/Katie Wegner	303-273-9445	k2wegne@ibm.net
Bylaws	Larry Lewellyn	Larry Lewellyn	303-979-4815	larrylew2@aol.com
Continuing Education	Jerry Dunn	Jerry Dunn	303-277-1129	beartrak@gte.net
Elections	Larry Lewellyn	Larry Lewellyn	303-979-4815	larrylew2@aol.com
Events/Marketing	Jerry Dunn	Jerry Dunn/Bob Riley	303-277-1129	beartrak@gte.net
Fiber	Bruce Ellis	Sharon Beacham	303-666-9437	beachams@phf-llamas.com
4-H Advisor	Jill Knuckles	Karen Kinyon	970-484-6241	doublekdiamond@
Library	Lougene Baird	Grace Gerber	303-814-0047	ggerberlff@aol.com
Membership	Lougene Baird	Sharon Herbold	719-495-3092	ppwoolies@earthlink.com
Research	Bruce Ellis	Bob/Barbara Hance	303-422-4681	hancelama@att.net
Publishing	Lougene Baird	Ron Baird	303-688-5445	ronbaird@juno.com
Youth	Jill Knuckles	Camelid Kids, Barbara Flinn	307-683-2548	cloudpk@wavecom.net
		Journal, Teri Nilson Baird	303-646-4373	brokenwindmill@bwn.net
		Newsletter, Mary Mauz	303-526-0092	tmbriinellamas@sprintmail.com
		Barb Harris	719-275-9457	

RMLA Journal

Editor

Teri Nilson Baird
28825 County Rd. 5
Elizabeth, CO 80107
303-646-4373 (voice)
brokenwindmill@bwn.net

Advertisements

Marilyn Arnold
11483 E. Ponderosa Lane
Franktown, CO 80116-9319
303-841-5126 (voice and fax)

Area Reps

Jill Knuckles
Diane Tompkins
Annette Mulholland

Volunteers needed!

Journal Deadlines

February Issue	January 1
May Promotional Issue	April 1
August Issue	July 1
November Issue	October 1

Advertising information is found in the back section of the Journal.

© The Rocky Mountain Llama and Alpaca Association

Reproduction of articles herein is authorized, subject to written permission being obtained from the individual authors. *Exchange Newsletters* may reproduce articles as needed so long as the author and the publication are given credit for the original work. Exception: Articles denoted with a © or "ALL RIGHTS RESERVED" *must* obtain approval from the author.

NOTES: The information contained in this Journal is not intended to be a substitute for qualified professional advice. Readers are encouraged to consult with their own veterinarian, accountant, or attorney with any questions concerning their animals or business operations. RMLA is not responsible for any losses resulting from readers' failure to heed this caution. The views expressed by the writers of the articles herein are not necessarily those of the Rocky Mountain Llama and Alpaca Association, its' board, and/or its' members.

You Might Be an RMLA Member If...

- You go anywhere else on the planet and the air feels sticky.
- You consider a three-piece suit to be a pair of shorts, a T-shirt and a polar fleece pullover.
- When someone says you're cooking with gas and you immediately think of whisper light.
- When light wool means our llama and not our Armani suit.
- All the plastic bags in your garage are not thrift store items, but llama fiber.
- You get depressed after one day of foggy weather.
- You just spent 40K on a pickup truck with 500 pounds of foot torque so you can pull a 200-pound llama across the county.
- You've ever "done Hotchkiss" out of the back of the aforementioned pickup.
- You have an advanced degree in business or engineering and spend the bulk of your day shoveling poop.
- Your idea of a pedicure is getting all of your llamas toes done in one day.
- When someone tells you your animals are square, you think it's a good thing.
- You tell your husband to pick up granola on his way home from work and he stops at the daycare.
- You can make extra spending money selling beans to our neighbors.
- The best painting that you own is on your barn wall.
- Your lawn care company resides in your barn.
- You enjoy being fleeced.
- You realize the Llama has trained you.
- You are sick of hearing the words "Do Llamas Spit?"
- You get into a spitting contest with a Llama.
- You spend 5-6 hours at work (company time/night shift) coating llama beans with epoxy to make a hat band.
- After a day of grooming and shearing you have a whole new concept of a "high fiber diet".
- If all your spare cash goes to hay.
- If you've ever orgled at a New Year's Eve Party.
- If you've ever worn llama ears into your barn.
- When someone says "beans" you don't think of "refried".
- If you buy 2 copies of "Caring for Llamas"... one for you and one for your vet.
- Your llama is better groomed than you are.
- A high tail set has nothing to do with pantyhose.
- Your favorite color is green.
- Your favorite birthday present is a big wheelbarrow and a poop shovel.
- When you're talking about babies, you're not talking about grandbabies.
- If you know how to pick beans.
- Every pocket of every piece of clothing you own contains hay, even after laundering.

This list was compiled by RMLA members at the 1999 Annual Conference in Grand Junction, Colorado.

RMLA at the ALSA Grand Nationals

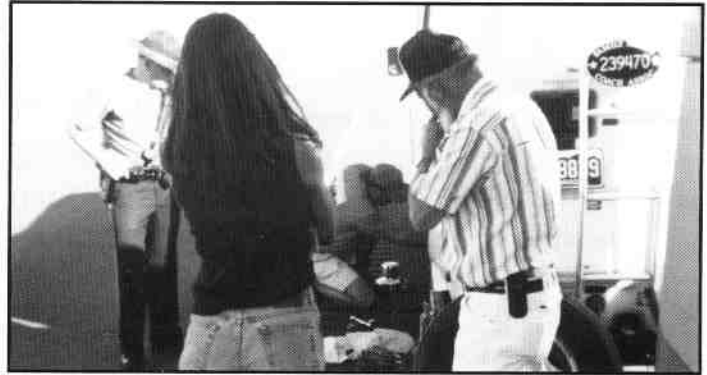
Or, You Might be an RMLA Member if You've Ever Blown a Tire in Kansas

Teri Nilson Baird, Broken Windmill Ranch

Elizabeth, Colorado

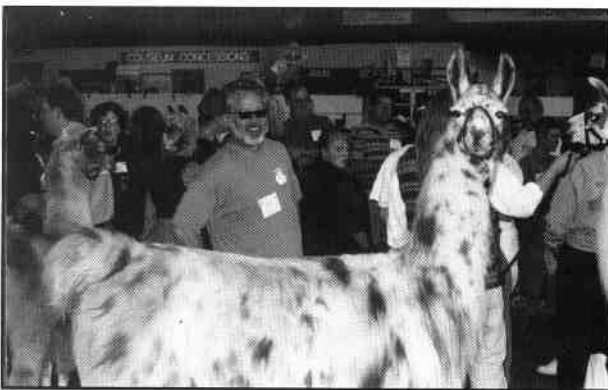
And if you've blown two tires in Kansas, you just might be president-elect.

The current flat-tire count for RMLA members going to Nationals is four. Larry Lewellyn was lucky enough to experience it twice; once going to Columbia, and once coming home. He is pictured below with his helpful audience.



Larry gets some advice from the Kansas State Patrol.

Below, clockwise from left: Jerry chauffeurs the Mayor of Columbia, Missouri; Lloyd chauffeurs Larry; Jerry, Deanna, and Teri taking a "grooming break;" and Mark during the Showing Clinic, surrounded by other RMLA'ers.



Minutes of the Annual RMLA Membership Meeting, October 23, 1999

Grand Vista Hotel, Grand Junction, Colorado

Board Members Present:

Bruce Ellis, President; Jerry Dunn, Vice President; Lougene Baird, Treasurer; and Jan Redenbarger, Secretary

Minutes were approved from the 1998 Annual Membership Meeting in Castle Rock, Colorado.

Treasurer's Report:

General Operations \$10,038
Liquid Asset Account \$24,270
Life Member - Escrow Savings \$4,760
Research \$7,385
Overall General Operations Account \$46,453

Bookstore \$8440
Production Reserves \$ 10206
Total Bookstore \$18646

Overall Total \$65,099

Old Business:

RMLA is in need of a Marketing Chairperson and committee. Please call Bruce Ellis to volunteer for this important committee.

LLMA (Lama Lifestyle Marketing Association)- RMLA was an initial sponsor only. The Breeders directory has gone out to the over 3000 people requesting information rather than to the llama ranches as initially intended. Over half of the leads came from Delta Airlines in-flight magazine.

LMRG (Lama Medical Research Group)- Continuing to fund research.

Website - Bruce Ellis is working as co-webmaster with Bob Riley. We now have our own server, which has much more potential than the previous host. RMLA wants to create a website for our youth, which can be found at www.rmla.com/youth. Any youth member who wants to help set up the website should let us know.

Committee Reports:

4-H / Youth - Jan Redenbarger. RMLA has been helping a lot of groups around the United States setting up local 4-H chapters. We have been very instrumental assisting CSUs project to put record books on line; this will be up and going next month. Would like to split off the 4-H and the Youth so we are looking for another Chairperson to run the youth portion.

Research - Ron Baird. Currently have \$7500 in account. The most practical value is a four-year study of castration at different ages. What is the real effect? When is the best time to castrate? Allocated \$5000 for the second year of the study.

Fiber - Sharon Beacham. Currently have 30 consignors with the co-op booth. Main activity has been support of the booth. In 1996, the first year of operation, we had 17 consignors and approximately \$2300 in sales. In the 4th year of operation (1999) we have 30 consignors and approximately \$8000 in sales.

Membership - Barb Hance. Currently have 530+ members, 20 Life members, 29 Jr. members. We have member is at least 40 states.

Library – Sharon Herbold. Report follows in this Journal.

Events - Jerry Dunn. RMLA sponsored over 23 events, which included shows and special events. If you want RMLA to sponsor an event you need to submit a request. RMLA has insurance coverage available. Also if you need help funding, you must submit a budget. Jerry will be sending out information about the National Western Stock Show (NWSS). Proposing to open up the floor to the general public following the scheduled classes to allow the public to meet the llamas. National Western Staff wants to sponsor the National Show in the year 2000. They are putting together a proposal. The National Western is also putting together a proposal for 2001 for the Stock Show. Do we prefer to be at the beginning of the show (majority show of hands) or during the middle of the NWSS? A request was made for more advertising for the NWSS. A suggestion was made to advertise in the Fence Post.

Youth Foundation - Jerry Dunn. Funds for youth members which provides scholarships, loans, money for transportation and expenses to the ALSA Grand Nationals... Nine youth are receiving \$200 stipends and four youth are presently on scholarships of \$350 for each of their four years of college.

Publishing - Lougene Baird. RMLA Bookstore – Keith and Katie Wegner. Need to run new publication of the RMLA Youth project manual. Reviewing Caring For Llamas for the third publication. RMLA Journal - Teri Nilson Baird. The Journal receives wide-spread attention, as a variety of other publications re-run our stories. We need more ads, though, in order to keep costs down.

Mary Mauz is rewriting the RMLA pamphlet. The front cover needs to be redesigned to include alpacas, and information about alpacas included as well.

New Business:

Camelid Kids - Barb Coffman-Flinn is no longer receiving support from ILA and would like RMLA to take over funding the publication of this magazine.

Motion: A motion was made for RMLA take over the publication of Camelid Kids. Annette Mulholland is willing to help with the publication. Motion was seconded and approved.)

Hand Spun Scan Contest - Karen Kinyon proposed that RMLA sponsor a hand spun scan contest at Estes Park and Taos. \$25 for each.

Motion: A motion for RMLA to sponsor the Hand Spun Scan Contest for both the Llama Entries and Alpaca Entries at the Estes Park Wool Market and the Taos Wool Festival. A \$25 prize would be awarded for each division at each show. Motion was seconded and approved.)

Merchandising - Would RMLA like merchandise for sale with the RMLA Logo? The majority of hands show "Yes". The Board would like to hear additional ideas and comments.

Ideas for the RMLA Millennium 2000 Conference:

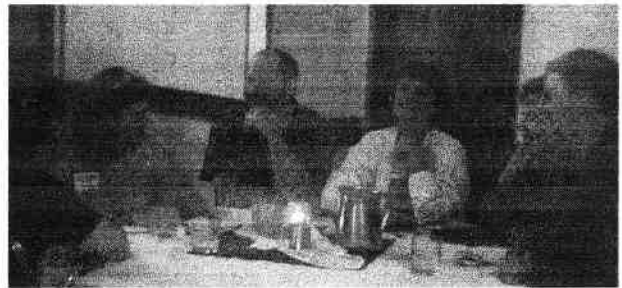
- Neo Natal - LaRue Johnson (3 votes)
- Basic training - Bobra Goldsmith
- Poisonous Plants - Shirley Weathers (2 votes)
- Micron Testing
- Marketing - Peter Ila (2 votes)
- Llamas at the Conference
- How to start a Llama Drillteam – Sally German Rucker
- Double and Triple Cart Driving
- Fiber (Felting, Fleece Prep, and Beginning Weaving) (4 votes)
- ALSA Llama Fleece Judges Clinic
- Jerry Dunn's Trailer Driving and Backing Clinic
- Show Clinic (2 votes)
- John Mallon
- Tim Thompson (3 votes)
- Llama bean craft workshop
- Nutrition Supplements and Deficiencies
- General Health and Parasites
- First Aid and Emergency Care
- Genetics
- Llama 101
- Tax Preparation / Business setup - Jerry Beaudrow
- Adult Showmanship (2 votes)
- Grooming / shearing
- Show / Event Management
- Youth 4-H
- Panel on PR work including precautions
- Encourage CSU students to participate - incentives
- Backcountry Packing
- Internet / Email / Web Pages
- Classes for Men in the Morning
- Animal Photography
- Fiber Dyeing
- Fly Tying
- Health Care Updates
- Stud Service Auction (proceeds going to the Youth)
- Judges Talk
- Kay Sharpnack
- Youth Poster Clinic for 4-H
- Name Tags include City and State

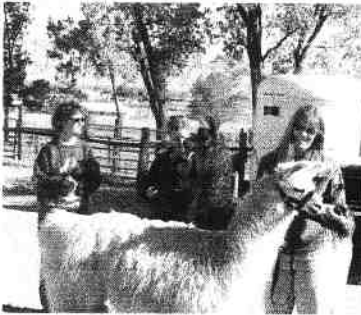
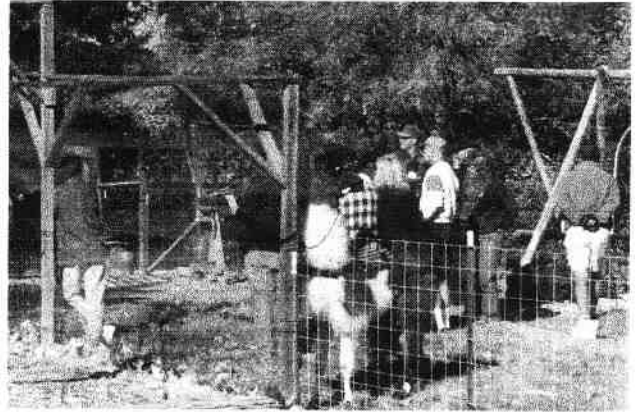
Elections: Voted in New Officers. Bruce Ellis has agreed to serve an additional year as President. Jerry Dunn was elected Vice President; Larry Lewellyn, President Elect; and Jill Knuckles, Secretary.

Respectfully Submitted,
Jill Knuckles, Secretary

The Annual RMLA Mini-Conference was held in October in Grand Junction, Colorado. Practical experience training was conducted at Tall Tail Ranch, courtesy of Rob and Jill Knuckles.

Thanks to the committee for putting together a great conference!





Conference 2000 Categories

Hoping your year 2000 is starting out to be a good one. Listed below are topics for our Conference 2000 to be held October 21 & 22, 2000 in Longmont, CO. These were brainstormed at the Grand Junction 1999 Conference. Please add any topics from your "wish list" at the bottom. Return to Jan Redenbarger, Conference Chair 303.642.0140

Veterinarian and Health:

Neonatal (La Rue), _____
Tim Thompson, DVM, _____
Eric Sharpnack, DVM, _____
Vet student incentives, _____
Health care updates, _____
Nutrition & Supplements et al, _____
general health, _____
first aid emergency care, _____
parasites, _____

Marketing/ Business:

Marketing with Peter Ilyn, _____
Internet, _____
Tax set up for business _____

Youth:

Youth poster sessions for 4H, _____
Youth 4H presentation _____

Training and Clinics:

Basic Training (Bobra), _____
Drill team with Sally, _____
Doubles/triples cart driving, _____
Jerry Dunn trailer backing clinic, _____
Grooming/shearing, _____
Show clinic, _____
John Mallon clinic, _____
Adult showmanship, _____
Show/event management _____

Fiber/Crafts:

Micron fiber testing, _____
More fiber topics: felting, beginning weaving,
fleece prep, _____
Fleece judging clinic, _____
Dyeing fiber, _____
Llama bean craft workshop, _____

General:

Llamas 101 _____
Poisonous plants (Shirley Wethers) _____
Genetics _____
Llamas @ conference _____
Packing- back country experiences _____
Classes for the men in the morning, (fly tying) _____
Photography _____
Judges talk, PR panel _____
Stud service auction (\$\$ to youth) _____

People Wanted and Other Comments:

Kay Sharpnack _____

Would like to be on Committee _____

Please return completed survey to:

Jan Redenbarger
PO Box 7096
Golden, Co 80403

Fax: 303-624-0140

From the Editor

In keeping with the RMLA mission statement, I am attempting to make the Journal primarily an educational publication, and the best publication of it's type. RMLA is a member of the Newsletter Exchange Network, an organization of all the lama publication editors. We send a copy of our Journal to each editor, who then is authorized to reprint articles from the RMLA Journal, as we are authorized to reprint from theirs.

I get a lot of these newsletters, usually 10 or 12 a month. Although there is naturally some duplication from newsletter to newsletter, there is also a lot of new information. A lot of these articles deal with health and medical issues. Not all of them will be appropriate for the Rocky Mountain region, with our semi-arid climate and lots of sunshine, but we now have members from so many different areas that I would be remiss not to include some of this information. Our next issue, because it is the promotional issue, will focus on the different things we do with our llamas: packing, fiber production, breeding, and showing.

But rather than repeating articles from the other publications, I would like to print articles from RMLA members. My goal for the Journal is to create the publication that the other newsletters re-print. And with your help, we can do it.


I have heard people talking about submitting articles, but then we get busy with the show season or the holiday season and we forget. **Remember, our May issue is our promotional issue.** What you submit will be seen by a lot of people! Send me a story about packing, breeding, fiber, or showing. Include pictures if you like. If you want the pictures back, please send a stamped, self-addressed envelope and I should be able to return them to you around the time you get your next Journal.

There is also a fairly new source of information I can recommend to you: it is called the LLAMAs mailing list and you can sign up at LLAMAS@HOME.EASE.LSOFT.COM. Chelle Rogers moderates the list and there are always interesting topics under discussion. There are 23 separate topics you can receive e-mail about; I didn't sign up for all of them, but there is a lot of e-mail flying around each day regardless! Although there is some fluff, particularly in the Shows topic, there is a lot of good information and RMLA has some representation on the list. Chelle has had this going since April last year and new members are being added all the time. The topics that really generate the e-mail are health issues and BMS. There are also suggestions on barn management, such as what to put down on the floor to make clean-up easier, and fencing alternatives. If you want to eliminate the constant e-mail, sign up for digest mode. That way, you will receive only one e-mail per day.

We are still looking for items for cover art and stories about llamas for our content. Please call me on 303-646-4373 or e-mail me at brokenwindmill@bwn.net if you have suggestions either on topics or a particular story you would like to see published. We've had some volunteers to collect articles; contact either Jill Knuckles, Annette Mulholland, or Diane Tompkins. We need your input. This is your Journal.

Jeri

	ALPACAS
	FIBER
	LLAMAS
Owners Robert & Barbara Hance 11818 W. 52nd Ave. Wheat Ridge, CO 80033 (303) 422-4681	Manager Mary Hance 11855 W. 52nd Ave. Wheat Ridge, CO 80033 (303) 467-3261
hancelama@att.net	

	Jan Redenbarger
	303.642.0140
Winding Trails Llamas P.O. Box 7096 Crescent Branch Golden, CO 80403	

A New Year's Resolution – Attend the Fairplay Llama Race

Roger Miller, Escarpment Llamas

Colorado Springs, Colorado

I feel the Fairplay Llama Race/Children's Lunacy is one of the most important events sponsored by RMLA. This event allows the general public, no matter what their age, the opportunity to experience the uniqueness of llamas with a hands-on approach! To see and feel what llamas are, and what they can do.

Now in the year of 2000, we look back at last year and remember those events that meant a lot to us. There were many, but the Fairplay Llama race was right up there for me. Being held in the mid-summer provides the best conditions to take on the beauty of Mother Nature. Last year's Fairplay Llama events were held on Saturday, July 24, 1999, during the Fairplay Burro Day Celebration. Fairplay offers a unique location for this race since fans can watch most of the race action on the south side of Front Street from the riverbank.

For those folks that are not familiar with Fairplay, Colorado, it is located 81 miles southwest of Denver, Colorado, on Highway 285. Fairplay's altitude is just over 9800 feet. It is a small community that supported mining and now supports ranching and tourism.

The Fairplay race offers challenges for many different folks. The race has Pro and Amateur divisions and for those who are not in a hurry and want to experience nature around them, there is a Walkers division covering the same course. The Pro and Amateur divisions will lead their llamas through the course and the llamas will have a pack with gear totaling 30 pounds. The Walk class consists of walkers leading llamas without packs. The Pro-division is open to both women and men. The Amateur class is broken six different age groups, for males and females - ages 12 to 19, 20-29, 30-39, 40-49, 50-59, and the 60+ groups.

Last year's race had five professional runners, 10 amateur runners, and 52 walkers for a total of 67 participants using the course. Some individuals completing the course were: a young man of 12 and young women of 60+ years, all with glowing faces. Petra Janes, the first visually impaired woman to complete the Walk course, received great reviews.

Last year the rains held off and provided an excellent day for Fairplay and the Llama events. The river was a little higher than normal but passable and did offer its usual challenge to the participants. The three-mile course starts and completes on Front Street (just one block south of Highway 9, which passes through Fairplay), first heading east toward Highway 285, and making the first of three river crossings; out of the river bed onto a flat-grass prairie with man obstacles, then back into the rocky river bed with river foliage and the second crossing, through river brush, climbing onto and across the dam. Next use the foot bridge to cross the river and climb up to the man made tunnel and then through Fairplay beach picnic area to the willows and marshes, crossing the river for the last time, and on to KILLER HILL; which brings you out of the river area and into Fairplay ghost town, to get back onto Front Street and the finish line.



Petra Janes finishes the course.

After the last Walkers has completed the course and the times are being computed for the Pro and Amateur races, the kids Llama Lunacy course is being prepared. The llamas are provided to children of any age and ability to walk through the obstacle course and each child receives a ribbon upon completion. Llama Lunacy has become the high light of the day for children and parents. Fifty-six children enjoyed the obstacle course in 1999.

I would like to thank those individuals whose assistance with the race was greatly appreciated and made the Fairplay Race and Llama Lunacy a success. These folks provided llamas for the general public's use, setup the courses, administrative duties, and worked with the public to assure the public had a memorable experience:

Melanie Rojak
Betty Miller
Dee and Carla Goodman
Valeria Young
Linda, David and Katie Slothower

Etienne Miller
Sally Rucker
Sherri Adamyck
Mark and Cathy Wittrup
Bob Welsh (Lunacy Judge).

I need to thank the Burro Committee and the town of Fairplay for opening up their town and making us feel at home to enjoy their community. The Fairplay merchants, who donated race first place prizes.

Special thanks to Sally and Jeff Rucker, Dee and Carla Goodman, Valeria Young, and Sherri Adamyck for providing llamas for the walkers, runners and children. These individuals saved the day by providing llamas for the public.

Mark this date on your year 2000 calendar to come to the FAIRPLAY Burro Days – specifically the Llama Race, which will be held JULY 22, 2000, (check-in begins at 9:30 a.m.; race begins at 11:00 a.m., Children's Llama Lunacy after the last walker crosses the finish line). Come enjoy the day, the race, the walk, the children, and the town.

It would be appreciated if you have llamas that can be used by the general public for the race (with packs) or walk, that you contact Roger Miller. Last year 15 individuals had to be turned away from the walk simply because there were not enough llamas to go around.

If you have questions about the Fairplay Llama Race, feel free to contact Roger Miller at 719-749-0119 or via e-mail at: escarpment@escarpmentllamas.com

Caring for Llamas and Alpacas

A world renowned RMLA publication. Orders shipped around the planet... (and elsewhere!)

To Order:

<http://www.rmla.com>

or

Send your name, address, city, state and zip and

\$23.95 plus \$4.00 S & H

(CO residents add 3% sales tax) to:

Keith & Katy Wegner

RMLA Bookstore

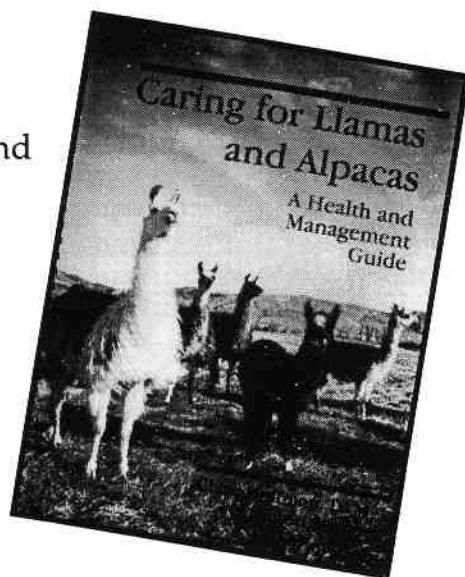
17190 W. 57th Place

Golden, CO 80403-1113

(303)273-9445

e-mail: k2wegne@ibm.net

ISBN:0-9622768-2-0



Committee Reports: Membership

We have closed the membership books for 1999 with: 33 Junior Members, 566 Individual & Ranch Members. 124 of these were New Members for 1999.

As you read this, it is too late for your membership to be included in our Directory, but we will of course accept your membership all year. If you do NOT want to miss any of the RMLA-sponsored events, be sure to send your memberships to us. You can either join on line with a credit card number or print the form and mail to us along with your check.

The Membership Committee and the RMLA Board of Directors want to give a huge THANK YOU to long time members:

Bruce & Gay Ellis,

Jerry Dunn ,

John & Jane Stout,

who have all re-joined RMLA for 2000 as LIFE MEMBERS. THANK YOU ALL AGAIN!

About the SERVICE DIRECTORY

A group of RMLA members decided that a sales catalogue might be a good idea. From that idea the Service Directory, aka our "Yellow Pages" has evolved.

For many years, a lovely lady named Erma Hast took care of all the orders and printing for the Service Directory, but there came a time when it became too big a job. It was logical for mailings to go to the same address as membership, since they were both done at the end of the year. The membership person then sent the forms on to whoever would take care of the printing set-up.

The Service Directory is handed out for free at events of RMLA, therefore folks who are interested in Lamas get a bit of information and can find advertisers and their products for further information and maybe arrange for a farm visit.

For the past two years, the Hances have handled the collection of the forms.

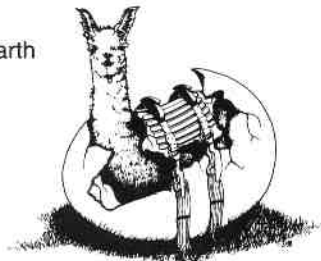
Since this is an advertising booklet, all ads are paid for; this may be where the confusion about the Internet listing comes from.

With the advent of electronic talk, the RMLA Board of Directors felt that RMLA should be among the pioneers in allowing our members to have access to, and benefit from, our web site. As a BONUS for joining as a RANCH MEMBER, the Ranch information would be listed on the web site for free.

This free listing is in no way related to the Internet listing request on the Service Directory advertising form. We know this has been very confusing, and have tried to make it less complicated; maybe someday we will have instructions that make sense. In the mean time you get what you pay for – Volunteers.

Hope all of you have a wonderful year full of lovely lamas. Bob & Barb Hance, Membership Chairs.

Charlie & Sandy Hackbarth
PO Box 548
La Veta, CO 81055
(719) 742-3447
(800) 767-7479



Mt. Sōpris Llamas Unltd.
Sopris Pack Systems • Llama Supplies

 **Llamarage**

BREEDERS OF CHAMPION SHOW LLAMAS

Joe & Mary Beth Hartsough
Platteville, CO 80651

P.O. Box 574
970-785-2463

The Story of Taro and the Clicker: A Bad Boy Turned Good

Michael Shealy, Touch the Earth Llamas

Black Forest, Colorado

My wife Marlice and I first met Taro when his previous owner called us, saying that she needed help with her two llamas. She was unable to remove the halter from one of them. She sounded quite disturbed about it, and asked if we could come over. She lived only a few miles from our ranch, so we went right over.

When we arrived, we asked some questions. How many llamas do you have? "Two," came the answer, "a mother and son." "How old are they?" I asked.

"She is ten, and he is three. She's not a problem, but you have to wait and see him. He has a halter on that he had when we got him, and I can't take it off; that's what I need help with," she continued.

"And when did you get him?" we asked. "Well, about a year and a half ago," she said. I said, "Whoa, he's had a halter on for that long?" "He's kind of hard to handle; he'll come right to the fence, but he won't let you touch him or get near him....except to take the grain." she went on. "Has he ever been with other llamas?" I asked. "Just his mom," she replied. "OK," I said, "we'll be glad to help you out. Let's go see them."

Taro was an impressive sight to anyone, especially someone who knows llamas. He is six feet, six inches at the poll. All espresso colored, but just too tall. Definitely, the basketball player-type. We asked when he had been gelded, but she wasn't sure. She had gotten them from a woman who had just the two of them together, and might have had him gelded at a year old. That is where his unusual height came from (we think), gelding before the testosterone comes on strong at 16-24 months. His sire is from a local ranch, and I know him to be of normal size; the mom looked normal too, but stood her distance. Taro, on the other hand, was right at the corral panel gate with his neck stretching way over to get his nose in our faces. Interesting.

With his nose right in front of us, we noticed the halter was very tight around his muzzle, wearing all the hair off his nose and jaw. At this point I urged we all move into the pen, over objections of the owner. "He won't let you near him," she warned. "The only way he will come near is if I give him grain". So, he ran big circles around us for a few minutes, and finally I suggested she get the grain. While she was gone, we tied a lead-rope to the top bar on the corral panel gate and waited for her to return.

When she came with a coffee can of grain, he went "grain-crazy." He lunged toward her, banging the panel gate and jamming his head into the can, almost knocking her over. With his head over the panel, Marlice quickly looped the rope over his neck and tied it on the other side. Gotcha! He didn't care, as long as that grain can was still there. I tried to unbuckle the halter but there was so much memory in the nylon band that I couldn't do it. It was just too tight. Luckily, I had my toenail shears in my pocket, and quickly, cut the halter off. We then put a new halter on the boy, and let him go. When asked how often she took him out, she said "never."

Leaving her place, a sort of a "hobby-farm" with at least one of everything (horses, goats, a donkey, a wild fox in a cage), we could see she had a big heart and really wanted him to be all right.

Almost two years later, we got another call from Taro's owner. "Would you come and get them?" she asked, sadly. "Why, what's wrong?," I asked. "I just can't handle him, and they are picking on my

other animals and won't let them into the barn." I swallowed hard. Did I want this guy around here?, I thought to myself. What will I do with him? My thoughts, and yes, my fears went flying. Was this guy going to be too much to handle? I told her that I would talk it over with Marlice, and call her back, thinking there may be a way out of this.

Of course, Marlice didn't have a problem with bringing them to our place. I called her back and we went that afternoon. Catching and haltering the mom was no problem, but again Taro ran the big circle route. So, out came the coffee can with grain. BANG! His head went into the can, I clipped the lead to the halter (the same one we had put on two years earlier) and away we went.

When he first felt the pull, he reared. I jerked down hard, then he slammed me with his neck on the way down and back to the grain can, BANG! Starting to get the idea now, I asked the owner to put down the can and she moved off toward the trailer. Taro followed, oblivious to the lead rope and me on the end. So I yelled, "put the grain away!" She clung to the can and continued, with both arms wrapped around it. He was leaping at her and wheeling around, hitting me with his head and neck. Then rearing up, then leaping ahead again, trying to get to the can. Finally, I screamed, "Put the can down." She stepped out of the line to the trailer and put the can down, behind a rock. We went by her toward the trailer and I left him tied to a bicycle tire inner tube looped onto the outside of the trailer while we talked and got ready to leave. Whew!

Once home, the mom went quietly in with our females and turned out to be a nice enough girl. Peaceful and friendly, she comes to visit with humans over the fence quite often. Taro, on the other hand, went into a corral panel pen 15' in diameter and about as far from the "big boys" pen. We figured that he needed some proper llama socializing, so he started there.

First, I took off the halter, giving myself an ultimatum and a formidable task. "He will learn, and he won't come out of this pen until he can be haltered again," I said to myself. This seemed like a perfect time to try out the *Click-and-Reward* training method that we had recently seen on the video tape from Jim Logan. I didn't have the slightest idea how else to start with Taro. Our other llama boys are fairly well trained. Maybe they are not performance winners, but they are in no real trouble. Taro was another story. I had to think for a couple of days before I could even start training him.

This guy was bad. He clucked at everyone that happened by and when approached, he would do a horizontal ear threat and if touched would spit. First we deprived him of any grain, giving him only his daily ration of grass hay and water. Next, I started wearing a ball cap around him; whenever he would cluck at me, I would flip it off and pop him in the nose. I did this three or four times a day and the clucking decreased. After two weeks, I started going into the pen with him waving my ball cap, and walking around until he would walk in front of me. A little respect, please. Then, I stopped and tried to get his attention using a rag tied to a stick. Taro was a stubborn guy, though; he wouldn't look at the rag, and he was a "freezer." He played no such games with humans, and yet another week went by (with me still doing the clucking & ball cap routine, as required).

When I walked into his pen the next time, he looked me up and down, looked at the rag, and he got his first *Click-and-Reward*. Whoa! Grain! Where is that rag? Each day after that, for another three months, we went a little further. One small step at a time.

From the rag we progressed to touching. At first, I could only get close to him, and I let that be enough for a couple of days. When he would threaten, I would back off immediately; of course no *Click-and-Reward*, and I walked around the pen a few times. He would stand and watch me walk. When I stopped he would come toward me. I started by adding the voice command "touch" with a light touch, then strokes, then shoulders, back, and then upper legs.

Soon after he learned touch, I added the halter to the lessons. He ran from the halter, so I tied it to the corral and didn't do anything for three days. After the delay in his grain feeding/training sessions he came quickly to the halter and sniffed (C&R). From here, we started our daily sessions again. In two more weeks he was walking into the halter. In another week I had the strap all the way around. Then, after two more days of allowing me to hold the strap around his head, he let me buckle it.



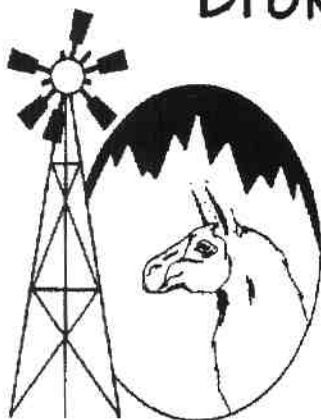
After he started nosing the halter pretty well, I expanded the lessons to three curriculums; touching, haltering, and foot lifting. Foot lifting was just an extension of touching, but I added another verbal command, "foot." Clucking is now limited to female passers-by.

At this point he was introduced into our big boys' pen with four adult geldings and a six year-old stud. He turned out to be a big baby, and dropped to the bottom of the pecking order immediately. Even below the younger, much smaller, and lightweight (300 pound) "Lil Joe."

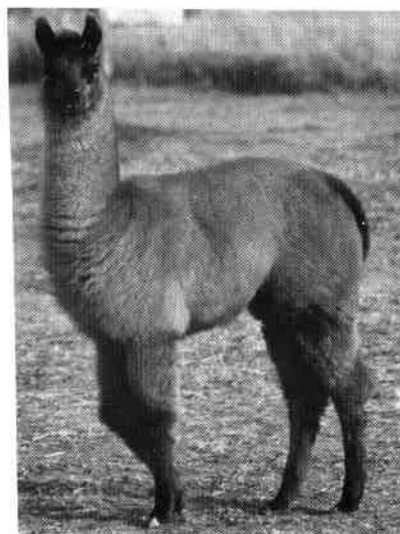
The bad boy is now one of our friendliest llamas. I can walk into his pen and he will come to me and let me touch him. At the "foot" command, he will give me a foot in the middle of his pen. His next step will be the pack saddle and panniers. I think he will become one of our best boys for packing, too.

This training method is so powerful that I just can't say enough about it. The more difficult the situation, the more powerful it seems to be. I love the idea that it can make a useful member of the llama community out of a probable reject with a serious behavioral problem.

Broken Windmill Ranch



28825 County Road 5
Elizabeth, Colorado 80107
303 646 4373



Broken Windmill Sundowner DOB 10/20/98

Lola's Sassy Little Lady x Gulliver's Traveler

Our Golden Gate Escape: A Party of Four

Jeff and Connie Myers, White Dove Llamas

PineCliffe, Colorado

This special outing took a few weeks of preparation. The truck was repaired, the llama trailer lights fixed, a housesitter reserved, food packed, a special apple bar dessert made for everyone, not to mention the endless steps up and down from house to truck, loading these essentials. Then the telephone call came — The Golden Gate Escape had been canceled. There was a mix-up with the campsite reservations. Only a couple of sites were available in the campground. We had all of our gear in the truck and we were ready to load the final touch for this adventure: our beloved llamas, Windjammer & Indigo. We had put a lot of training into our llamas to be our fun companions and packers of our trail gear. We were truly saddened to hear we would not see all the people and llamas who gathered in 1998 for this fun event. Jeff and I reminisced over the previous year's campout: the fun of meeting of other llama folk; of seeing aspen meadows come alive with several llamas; of telling llama adventure stories around a blazing campfire; the endless food; and what we all came for, the hike, and the delight of all whom we passed with our llama train.

Lets go anyway! We determined it could be a great opportunity for our own getaway and our first solo over-nighter. Campsite #2 was available right next to Aspen Meadows. Windjammer and Indigo loaded with ease, having learned these trailer rides always result in fun. Off we migrated the ten miles to the State Park and proceeded to stake out the llamas and unload our gear. The few sprinkles of rain faded to nothing and camp setup was quickly achieved. Windjammer kept looking for what he remembered was a field full of fellow llamas. His inquisitive expression was persistent so we opted to take the two for a walk around the field and surrounding areas. I know without a doubt that they both remembered their maiden outing here the previous year.

The magnificent vibrant array of autumn colors set against mountain peaks made for a splendid backdrop for the tall golden grasses gracefully moving in a wave-like manner across Aspen Meadow. The rhythmic sounds of our "speechless brothers" chewing with great pleasure set the stage for a peaceful sunset. The evening settled into a spectacular display of moon shadows. The white aspen tree bark was illuminated by the brightness of the night's strikingly full moon. White clouds above reflected the moon's light upon the golden tufts of whispering wild grasses below. The sound of a soft guitar is heard from a neighboring camper. Windjammer and Indigo settle into the protective grasses and disappear from sight except for the silhouette of those endearing banana shaped ears, alert and discerning.

The soft winds decreased to a trace, campfire smoke rose straight up, and stillness and an incredible quiet moved across the land. The moon peeked through wispy clouds on one side of the meadow as the Big Dipper boldly arched over Squaw Mountain. I stood out in the field, absorbing this astounding beauty presented to us by nature in the best of acoustical sound and in full Technicolor. The moon rays sent a moon shadow from my body frame to the earth and I felt at peace. My loving husband, Jeffery, and my two beloved llamas made this adventure so very special. I was so glad we came to this lovely place. Our hectic lives so often pass by these gifts of nature from God, unnoticed and unappreciated. It was good to stop and see the grandness of His hand. I was thankful.

So Jeff and I crawled into our cozy tent with a quick peek out at the llamas nearby. Windjammer and Indigo appeared curious to see the tent coming alive with its occupants settling in. A couple more glances at the llamas showed they had returned to their grassy beds and that all too familiar chewing.

The soft breezes gave way to strong warm winds as the night moved into a deep slumber. Jeff, myself, and the two llamas had no idea what was heading our way when at 11:30 at night, a noisy vehicle with several

occupants stopped at campsite #1, next to us. We were immediately alerted to an animal rustling around our tent. Jeff said to me, "It's a dog." He then yelled out the tent door, "We have llamas out here, get your dog out of here". The dog left and a quick silence filled the windy night. Then the noise—grass rustling, loudly! The llamas were up and moving fast! I flew out of the tent, stocking foot and ready. I ran to the llamas, who bolted quickly from one end of their tethered lines to the other. I yelled "Get your dog, he's chasing our llamas." I was knocked down by a frantic Windjammer and instantly was tangled in his line. The owner of the dog finally appeared and I yelled "Get your dog NOW!" The owner seemed less than concerned and walked toward his now fleeing dog, who disappeared into another campsite adjacent to the meadow. I righted myself, calmed my breathing and went back to my llamas to see if they were all right. The moon had moved to a lesser illuminating position, but both llamas appeared to be moving okay and no blood was visible. I was standing in front of Windjammer talking to him as he seemed to be the one that the dog was after. Windjammer's nostrils were in a high panting mode, and , his breathing reflected his increased heart rate. I heard a noise behind me and I turned around, placing my back to Windjammer. There in front of me was the predator dog. It was a Rotweiler, and I was standing between him and his prey! I raised my arms in a threatening motion and yelled at the dog with every bit of strength I had. I instantly yelled once more at the owner to "get his dog NOW!! RIGHT NOW!!" The owner, whom I never clearly saw, called his dog and the animal disappeared into the dark towards the vehicle near camp site #1.

I heard car doors open and close, and the intruders drove deeper into the campground. I stayed with Windjammer and could hear the quiet of the campground rudely broken again by car doors opening and closing, people laughing, a child's voice and adult voices. Then, as quickly as they all descended upon the campground, they left. I could not see the car, nor the people. The stocky black dog with a big head and brown leg, and the name by which his owner called him is all I know of that unfortunate event. I checked the lines on the llamas again and tried to calm my own shaking body. I did not sleep much that night. I was up talking through the tent flap to Windjammer, who stood like a sentry facing campsite #1 all night long. Indigo had settled back into the comfort of the soft grasses. All night Windjammer kept vigil, and all night I lay watching him through the tent. He never moved. I tried to console him, but his position was frozen. I felt he was not going to take another chance on the comforts of sleep. His ears were in the full alert position, his head focused unwaveringly. Life taught him something this night and he would never be the same.

The darkness of evening melted to a sweet morning daylight and I quickly dressed and went to Windjammer. He still would not move. I wanted to see him walk, so I offered him grain. Windjammer is one who will run from the far side of the paddock for a carrot or a cup of grain, but on this tragic morning he did not. I became alarmed and shook the cup again to entice his step. Slowly he stepped forward, revealing a limp and a stiffness to his gait. I met him with the grain and lowered the cup to the ground for him to feed while I checked his legs. That was when I saw the serous fluid and blood dripping down between his hind quarters. I yelled for Jeff, and together we tried to pick up Windjammer's tail to see what injury he sustained from that vicious Rotweiler. I never knew that those tails could be clamped down so tightly. We could not see the injury at this time. State Park Ranger Joe Brand entered the campground on this morning and we alerted him to the incident. He immediately scanned the campground and nearby campsites for the dog but without success. The State Patrol was notified and everyone was on the lookout for the dog and its careless owner. Joe was with us in the meadow looking at Windjammer when Jerry Dunn entered the park with her llama, Batu. Upon seeing Batu, Windjammer's tightly clamped tail flew up, revealing four big gouges in his perianal area. The magnitude of his wound was evident to us all. Jerry contacted Dr. Debra Mayo, known and respected llama vet, who happened to be in the area of Golden Gate State Park. Dr. Mayo tended to Windjammer's wounds. No sutures were used due to the unclean nature of the wound, and the depth was bad in only one spot.

Exhausted emotionally and physically from lack of sleep, we headed home to the safety of our 10 acres and fenced paddock faithfully patrolled by Bayonne, our protective Great Pyrenees.

Wisdom is one byproduct of such an experience as this. Whenever we take our llamas on campouts or hikes we are aware of the dangers from wild animals, but nothing prepared us for what a domestic animal owned by an irresponsible idiot could do to so totally destroy a beautiful moment. We learned that a single dog will almost always attack the flank and perianal or scrotal area of a llama in an attempt to castrate and disable it. If two dogs are involved, one will attack the throat and the other the perianal area. Because of this incident we will always *thoroughly* check our llamas for injury if attacked and we will not be so passive when it comes to actively confronting a dog owner. I will from this day forth attempt to get any negligent dog owners name and or description and car and license plate numbers. If on the trail, my camera will be poised and ready to capture any guilty party negligent with their dogs and I will report them to the authorities. I will carry mace, a big club and an anger that will motivate me in a split second to fend off attacking dogs. We know that not all dogs are as aggressive as this incident has documented. We have three dogs ourselves. We are not people who dislike dogs, but we are people that are committed to making sure no foolish owner ever gets away with the damage that this dog's owner as gotten away with. Dog owners need to be aware that all dogs, including their own, are capable of instinctual acts of aggression and the dogs must be kept under control for their safety and the safety of others, both man and beast.

Windjammer is healing and I am also. His scars remind me daily of how close we came to greater injury. Both llamas are much more aggressive towards our own dogs now, and we have had to modify our fencing to separate them totally, although Bayonne still sleeps with the llamas at night. He is there because we do have large wild predators in our Rocky Mountain home area.

We wish to gratefully thank Jerry Dunn of Bear Track Farms and the Rocky Mountain Llama and Alpaca Association; Dr. Debra Mayo and Lloyd Wamsley, vet assistant, and Joe Brand of the State Park Service for their priceless and timely assistance during this crisis.

I will always treasure those early evening hours with my husband and llamas, and those few moments of peace watching the moon birth into a huge luminous sphere while standing among the aspen moon shadows of Golden Gate State Park.



Windjammer in the meadow.

Welcome to Our New Members!

Dylan Avila (Junior)
Foothills Llamas
10715 W. Belleview Avenue
Littleton CO 80127-1725
(303) 979-4815

Gina Boleng
26700 County Rd. 17-21
Elbert CO 80106-9999
(303) 648-9004
boleng@rmi.net

Emily Bray &
Lisa Tonck
Lefthand Llamas
4158 Nelson Road
Longmont CO 80503-9005
(303) 447-1107 FAX (303) 447-8317
tonck@rmi.net

Maggie Brown
9270 E. Inspiration Drive
Parker CO 80138
(303) 841-8605 FAX (303) 840-1568
Mulin@earthlink.net

Ken & Ruthe Coleman
Hillside House
347 Hillside Avenue
Santa Fe NM 87501-2217
(505) 953-1949 FAX (505) 820-1416
pedaler1@gte.net

Betty Davis
Santa Fe Trail
Rt. 1 Box 96
Richfield KS 67953-9999
(316) 592-4202

Stewart & Cindy Enroughty
E2 Llamas, Etc.
143 County Road 2400
Aztec NM 87410
(505) 334-0380
stue67@cyberport.com

Judith Burns Frederick
1386 High Vista Lane
Estes Park CO 80517-8211
(970) 586-5455 FAX (970) 586-5455

Carrie Howard (Junior) &
Cindy Howard
Lazy H Llamas
P. O. Box 390
Westcliffe CO 81251-0390
(719) 783-3256
westinn@rmi.net

Al Leyner
4113 N. 109th Street
Lafayette CO 80026-9661
(303) 665-5740
foleymj@bouldermews.infi.net

Jane C. McBride
The McRanch
1011 FM 165
Dripping Springs TX 78620-4702
(512) 858-1652
mcranch@wimberley-tx.com

Dana McCraw
P. O. Box 671
Oakland OR 97462-0671
(541) 459-9473
dmcrcraw@mccl.net

B. Liz Michaelis
Llamas Etc.
0622 356 Road
Parachute CO 81635-9999
(970) 285-1871 FAX (970) 625-2277

Sandy Miller
4340 Sandstone Road
Monument CO 80132-8229
(719) 481-8138 FAX (719) 481-4149
redrranch@aol.com

Nell Mitchell
Mitchell Meadows
Rt. 2 Box 201
Bowie TX 76230-9611
(940) 567-3487 FAX (940) 567-3497
nellw@digitalpassage.com

Beverly Mulholland
3238 Lakeside Drive
Grand Junction CO 81506-2830
(970) 241-3065 FAX (970) 241-3065
bnoble@wic.net

LIBRARY NEWS

Sharon Herbold, Pike's Peak Woolies
Black Forest, Colorado

Just a reminder....your updated library lists can be found in the back of the Membership Directory.

New items added to the library recently include:

Working With Difficult Llamas with Ken Ploeser
A training video that includes haltering, loading and going through obstacles. Many of the approaches have been used for years "by the horse whisperers."

Teaching Your Llamas to Pack by Marty McGee, with Stanlynn Daugherty
This video incorporates training along with caring for your pack llama and tips for packing.

Spinning Wool, Advanced by Mabel Ross
This video includes spinning plied yarns and different lengths of fiber for worsted yarn.

Spinning Exotic Fibers by Judith MacKenzie
This is a video that includes spinning alpaca and llama fiber along with other exotic fibers. Also learn how to combine fibers and different techniques to produce novelty yarns.

Chris Switzer recently donated the book, The Llama Who Wished for Wings to the children's library. Thanks, Chris, for your thoughtful contribution to the library.



Rocky Mountain Llamas

See the best llama equipment online:
<http://www.rockymtllamas.com>
New Items! All pictures in color.

Halters & Leads for every llama activity
Packing Gear ~ Training Videos & Books ~ Gifts
Grooming Supplies ~ Driving Harness & Carts
Show Sheets, Warm Coats & Raincoats
Special farm items to make life easier

Phone/fax: 303-530-5575 e-mail: questions@rockymtllamas.com
Bobra Goldsmith ~ 7202 N. 45th St. Longmont, CO 80503

Continued on next page

Mary S. Robbins
7751 Hart Street
Fort Lupton CO 80621-4344
(303) 857-6412
mrobbins@uoa.net

Janine & Frank Rotter
Mountain Ranch Llamas
6701 E. Mountain Ranch Road
Williams, AZ 86046-9207
(520) 635-4739 FAX (520) 635-4188
mrlama35@aol.com

Bonnie Samuel & Bill DeBois
Alpacas de Santa Fe
29 Calvin Road
Santa Fe NM 87505-3615
(505) 471-9164 FAX (505) 474-3260
paco@alpacasdesantafe.com

Dylan German (Junior)
HC 41, Box 22
Birney MI 59012-9601
(406) 784-2440

Emily Varela (Junior)
Jelly Bean Llamas
39420 Olson Court
Kiowa CO 80117-
(303) 621-9021

Margaret Valvo
Stout Wild Ranch
6360 Gindler Ranch Road
Fort Collins CO 80526-5000
(970) 266-1233 FAX (970) 266-1431
stoutwildalpacas@att.net

Larry J. Santistevan
12749 WCR B 1/2
Fort Lupton CO 80621-
(303) 857-1384

Barry Springer
Bristlecone Ranch
11450 Meridian Road
Peyton CO 80831-
(719) 495-9482 FAX (719) 495-9482

Larry & Judy Steffel
Hidden Creek Llama Ranch
1512 Yankee Creek Road
Evergreen CO 80439-
(303) 670-8991 FAX (303) 679-0290

Joe Waerner (Junior) &
Sandy Wilson & Beth Waerner
Spirit Mountain Ranch
P. O. Box 942
Grand Lake CO 80447-0942
(970) 887-3651

Tina Westin
Flying V Ranch
6615 E. HWY 246
Lompoc CA 93436-
(805) 735-3577 FAX (805) 735-3577

Christof Stork
855 S. Milwaukee Street
Denver CO 80209-
(303) 282-5887
cstork@pcloys.net

Shari Templeton
Ridge Mist Llama & Alpaca Supplies
612 N. Newcastle Road
Newcastle ME 04853-
(207) 586-6800 FAX (207) 586-6800

Douglas Thiipen (Junior)
Hidden Cove Llamas
P. O. Box 1729
Alto NM 88312-1729
(505) 336-1933
thiipen@zianet.com

Jesse Richter (Junior)
Llama Llove
1612B Kynette
Euless TX 76040-
(817) 488-5078
bobllama@llama-locator.com

Dewain R. "Woody" Wood &
Carolyn Wood
Rose Wood Farms
798 Ridge Road
Golden CO 80403-
(303) 271-1110 FAX (303) 215-9072
woodyingolden@webtv.net

Changes of Address

Jack Bennett & Linda Vick
Rendezvous Llamas
29400 SW Heater Road
Sherwood OR 97140

Doug & Judy Brown
Marquita Ranch Alpacas
20065 S Rigeway 550
Montrose CO 81401-8616

Linda Cain
7544 N. County Road 27
Loveland CO 80538-9154

Mary Beth Chodil
Arapahoe Llamas
7233 S. Richfield Street
Foxfield CO 80016-1600

Jani Day & Cokey Jacob
Daycream Llamas
61393 Niagara Road
Montrose CO 81401-9607

Denise & Ron Haines
Daybreak Criations Suri Alpacas
6625 N. County Road 29C
Bellvue CO 80512-7211

Bobbie Jeffcoat
Ghostwind's Ranch
P. O. Box 29218
Thornton CO 80229-0218

Don & Karen Lange
Alpacas of Bethoud Colo.
15051 Jubilee Trail
Pine CO 80470-9547

Jeannette Lyons
14024 Shirwaun Road
Apple Valley CA 92307-4415

Trieh McCall
P. O. Box 527
Reeds Spring MO 65737-0527

Marcia Prather
492 Whispering Pines
Florence MT 59833-6722

Mary & Bob Reynolds
Heron Pond Ranch
12584 Oxford Road
Longmont CO 80504-8436

Carl & Joani Scott
Goose Creek Ranch
P. O. Box 5
Powderhorn CO 81243-0005
scottt@gunnison.com

Judy Sealy
Harding Llama Ranch
3685 N. Road
Hotchkiss CO 81419
(970) 527-5122 FAX (970) 527-5122
hirdard@aol.com

Art Zinger
619 Arapahoe Avenue
Boulder CO 80302-5908
azinger@uoa.net

E-Mail Changes

Karen Kinyon
Double K Diamond Llamas
kkd@oneimage.com

Patti Sage
sagellama@uswest.net

Elizabeth Martin
Sahalee Llamas
bejmart@hotmail.com

Mary White
Plum Creek Llama Co.
gary_white@alltel.net

More Happenings from Around the Area . . .

Thanks to our Fiber Booth Volunteers!

Karen Kinyon, Fort Collins, Colorado

We have had a fourth very successful season with the RMLA Fiber Co-op Booth. The booth traveled to many destinations and did much to promote llama and alpaca fiber in our industry. We want to thank all the wonderful volunteers who help with this booth throughout the year. You know who you are and we don't want to miss anyone, so we will skip the list of names. For everyone's information, these dedicated volunteers travel to distant places, paying their own lodging, meals, and any other expenses while they are helping with the Fiber Co-op Booth. They spend their time hauling display equipment, setting up the exhibit and talking all day and far into the night sometimes with the public and any other interested party that may come along. They demonstrate a variety of skills in spinning, knitting, weaving, drum

carding, combing and sometimes even llama handling. Often they juggle showing llamas and helping in the Fiber Co-op Booth. Then when the time comes, they pack it all up, stow it in the new trailer and get ready for the next one.

We want to thank all these Booth Managers, Fiber Artists, Llama Enthusiasts and Good Friends because without them, the RMLA Fiber Co-op would not be possible!! Get ready, keep making those wonderful llama and alpaca items and we'll all fly into the new Millennium together!! For more information about the RMLA Fiber Co-op Booth, please call Sharon Beacham at (303) 666-9437 or Karen Kinyon at (970) 484-6241.

Jim Logan's Click'n'Reward Clinic, May 13-14; Grand Junction, Colorado. Contact host Linn Jackson at 970-245-3833

Estes Park Alpaca Show

Helen Stewart, Superintendent, Larkspur, CO

I am excited and pleased to introduce myself as the Superintendent of the ALSA-sanctioned Alpaca Show at Estes Park Wool Market next year. This will be the 10th Annual Estes Park Wool Market and we are proud to be part of it!

The first Alpaca Show at Estes Park was in 1992 in conjunction with the Wool Market and Alpaca Owner's and Breeders Association Annual Conference. While AOBA has had to move on to bigger places, Estes Park Wool Market continues to provide our region with an Alpaca Show.

The presence of alpacas and alpaca exhibitors has grown tremendously in the last year. There were over 190 alpacas in the Wool Market Alpaca Show in 1999 and the number of alpaca exhibitors jumped from 37 in 1998 to over 90 in 1999, prompting a second tent to house them for the very first time. Because of this wonderful growth, some changes are in the making for next year. The Wool Market is kindly allowing us to move to the Sheep tent, where there is also a new arena with stands. They will provide a second tent for alpaca exhibitors in the same general area, next to the Wool Market Vendor Building in the midst of all the action. Thus, alpaca exhibitors will have two tents and the Alpaca Show will be held in its very own arena!

I plan a few changes for the Show next year as well. In the past, the Wool Market has had the responsibility of gathering all the registrations and organizing the color group placements. This year registrants will still send the registration information to the Wool Market, but these will be sent on to the Superintendent of the show and the classes will be formed according to ALSA rules.

ALSA rules will be adhered to and include the following: Registration papers must be sent with the entry to the show to verify age, color and parentage. When less than 6 alpacas are present in a color group, (see page 96 of the ALSA rule book) the groups can be combined in a manner so that each class has at least six alpacas.

I am also requesting that a small piece of fiber be sent with the registration to confirm the color of the alpaca entered in the show. While this is not an ALSA rule, I plan to make each class match the appropriate color group as close as possible.

We will again have Obstacle and Performance classes as well as Halter classes for both Huacaya and Suri. Our judge for next year's show is Susan Tellez.

Please feel free to contact me if you would like further information on next year's Wool Market Alpaca Show. I can be reached at alpacastew@aol.com. We plan to have a great time! Hope to see you there!

Calendar of Events

For information on having RMLA sponsor your next event, contact Jerry Dunn at 303-277-1129.

FEBRUARY

Have a Heart Llama Show Las Cruces, New Mexico, February 12, 2000

Valentine's Llama Show~Alpacas, Too February 13, 2000 Contact Mary Summers 505-867-3442

MARCH

St. Patrick's Day Parade, Denver, Colorado, March 12, 2000 Contact Jim Haas 303-670-3373

Four States Agriculture Expo, Montezuma Fairgrounds, Cortez, Colorado, March 10–12, 2000 Contact Pete Peterson 970-565-0785

Llamas/Alpacas and Kids in the Park Wheat Ridge, Colorado March 25, 2000 Contact Jerry Dunn 303-277-1129

APRIL

Bear Track Farm Driving Clinic, Golden, Colorado, April 29–30, 2000 Contact Jerry Dunn 303-277-1129

MAY

Jelly Bean Classic-Llama Fun Day, Arvada, Colorado, May 13, 2000 Contact Mary Mauz 303-526-0092

Banana Belt Llama Classic, Hotchkiss, Colorado, May 20, 2000 Contact Keith and Dottie LaRue 970-527-3181

Western Slope Llama Classic, May 21, 2000 Contact Keith and Dottie LaRue 970-527-3181

JUNE

LOCC Spring Show, Colorado Springs, Colorado, June 3–4, 2000 Contact Jeff Rucker 719-689-9010

Estes Park Wool Market, Estes Park, Colorado, June 16–18, 2000 Contact Linda Hinze 970-586-6104

JULY

Douglas County Summer Classic Youth Show Castle Rock, Colorado, July 9, 2000 Contact Lougene Baird 303-688-5445

Fairplay Llama Pack Race, Fairplay, Colorado, July 22, 2000 Contact Roger Miller 719-749-0119

AUGUST

Big Horn Rendezvous Llama Show Story, Wyoming August 4–6, 2000 Contact Barbara Coffman-Flinn 307-683-2548

Laramie County Fair Cheyenne, Wyoming, August, 2000 Contact Diane Walker Tomkins 307-635-2160

Boulder County Youth Show, Longmont, Colorado, August 12, 2000 Contact Mary Beth Hartsough 970-785-2463

SEPTEMBER

LOCC Summer Classic Llama Show Colorado Springs, Colorado September 9–10, 2000 Contact Mark Wittrup 719-683-2834

Golden Gate Escape-Llama Packers Weekender September 23–24, 2000 Contact Jerry Dunn 303-277-1129

OCTOBER

Candy Corn Fun Classic, Silt, Colorado, October 1, 2000 Contact Mary Mauz 303-526-0092

RMLA Annual Meeting and Conference, Longmont, Colorado October 21–22, 2000 Contact Jan Redenbarger 303-642-0140

ALSA Rocky Mountain Regional Llama Show, Denver, Colorado, October 14–15, 2000 Contact Jo Riley 913-557-9492



Indian Peaks Llamas

**We appreciate the confidence
you've shown in our
breeding program**



**Pheasant
Hill Farm
Llamas**

THANKS FOR YOUR PURCHASE OF THESE LLAMAS IN 1999:

<u>New Owner</u>	<u>Llama</u>	<u>Sire</u>
Bruce & Grace Avery Mount Airy, Maryland	Cadfael's Hallelujah	Cadfael
Kevin & Lisa Duffy Greenville, Indiana	IPL Camacho Chief	Macho Camacho
Kimmel & Carolann Evans Berthoud, Colorado	PHF Cadfael's Banner	Cadfael
	Blew By You	Cadfael
	IPL Gypsy Woman	Prospectus' Windfall
Benn & Christy Herr Thornton, Colorado	PHF Picacho's Oso Lanoso	Peruvian Picacho
Larry & Deanna Lewellyn Littleton, Colorado	Chico El Hombre	MGF Redkin
	IPL Whippoorwill	Camacho Chief
Mike & Pam Shaddy Loveland, Colorado	IPL Anton	MGF King Midas
Jane Sheppard & Jerry Uherek Beasley, Texas	Banjo Kazooie	Cadfael
	PHF Picacho's Valencia	Peruvian Picacho
Wayne Russert Castle Rock, Colorado	PHF Cadfael's Catera	Cadfael
	Aladdin's Jafar	The Executor

THANKS FOR BRINGING YOUR FEMALES TO BE BRED:

Terryl & Betty Hollman Turpin, Oklahoma	Smokie Cokie Roberts	Cadfael
Karen Kinyon Fort Collins, Colorado	Brown Eyed Girl	Peruvian Picacho
	Feather	Peruvian Picacho
Robert & Jill Knuckles Grand Junction, Colorado	Sedona	Cadfael
Raine Matcham & Troy Cobb Weaverville, North Carolina	PHF Picacho's Bonita	Cadfael
Jane Sheppard & Jerry Uherek Beasley, Texas	PHF Picacho's Valencia	Cadfael
Mark & Cathy Wittrup Falcon, Colorado	Picacho's Implet	Cadfael

Alaine Byers
INDIAN PEAKS LLAMAS
P. O. Box 202, Ward, CO 80481
303-459-3245

**"TWO HERDS
ARE BETTER
THAN ONE"**

John & Sharon Beacham
PHEASANT HILL FARM
2380 - 95th, Boulder, CO 80301
303-666-9437 / 800-465-2567

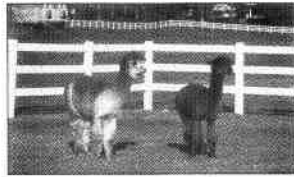
RANCH SHOWCASE

The Ranch Showcase is a collection of top line products that will make your ranch look and function at its best.

Heritage Fence

Vinyl fencing. No breaking, warping, rusting oxidizing or painting. Easy to install and maintenance free. Lifetime warranty. Suitable for any climate. Prices are quoted individually due to the unique aspects of each project.

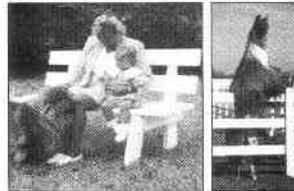
ITEM #075-M



Heritage Park Bench

An enduring vinyl bench to put in your favorite spot to relax and watch your herd.

ITEM #075-PB - PRICE \$149.00 PLUS SHIPPING



Heritage White Vinyl Picnic Table

An enduring vinyl table for fun and friends.

ITEM #075-PT - PRICE \$295.00 PLUS SHIPPING



Nelson Automatic Waterers

No more water to carry or ice to break. Comes in 24" Stainless Steel or Aluminum, 10" Stainless Steel or Aluminum, or 10" Wall Model. Multiple unit purchase discounts available. Regular prices start at \$239 for 10" aluminum.

- Durable
- Automatic
- Easy to Clean
- Economical
- 3 year warranty on heater and thermostat



Fly Control Program

This seems like an odd item for ranch showcase. Not really. Nothing can be more annoying to you or your guests or your animals than a lot of flies. Reduce them drastically with a good prevention plan based on use of fly parasites. Call us for pricing and plans.



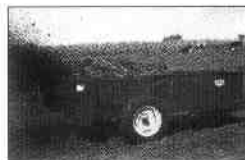
Beautiful Copper Full Body Weathervane

Llama \$595
Alpaca \$1395
Suri \$1595



Manure Spreaders

Available in 25 bushel ground driven models up to large PTO models. Prices start at \$727. 20 year guaranteed poly floor option. The best small spreaders built give you years of convenience and reliability.



Digital Platform Scales

Weigh Tronix Scales. \$1,295 Llama size, delivered. \$1,245 Alpaca size, delivered.

- Low profile non-skid surface perfect for easy step up
- Weighs accurately up to 1,000 lbs. in 2 tenths of a pound
- Tare feature for easy cria weighing
- One year warranty
- The best digital available
- Computer compatibility available

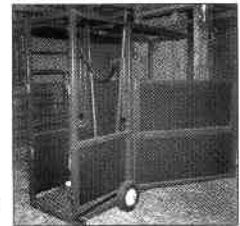


Chutes

The Best Care Station (Chute) is now even better! Features include:

- Padded, movable neck restraints
- Double door system on each side—open fully or fold down 1/2 door for access
- Narrow width for safe proper restraint
- Strong welded steel
- Stained and painted
- Now with removable yoke for head restraint

Standard: \$1,095.
Deluxe w/wheels, mats, and belly sling: \$1,295
Alpaca size-Standard: \$895 Deluxe: \$1,095



These chutes are used at major llama veterinary universities including Auburn, Ohio State, Oregon State and Michigan State

Corral Panels

New sturdy lightweight 5'x9' panels. Use for corrals of all sizes, creep feeders, temporary pens, gates, blocking off areas, permanent pens, shows. Very handy easy to set up. Fit into most trailers, convenient size, lightweight. Discounts on larger orders. Gate Combinations also available. Call for pricing and shipping.

NEW— alpaca corral panels and gate combination in 4" heights with closer rungs and even lighter weight at the same prices



USEFUL FARM COMPANY

3540 76th Street • Caledonia, MI 49316

Telephone: 888.771.3276
Fax: 616.698.0870

The RMLA Classifieds

Good Packers – 8 geldings, 1 stud, ages 6-up, prices \$500-up, all trail veterans. Stud is a prize. Sopris gear avail w/llamas. Lovely 3-yr old pregnant female - \$2000. Rendezvous Llamas, 503-203-8972. (2/00)

Llama Herd Reduction Sale – Beautiful heavy wool males & females, all colors, 1/2 to 3/4 Chileans and 1/2 to 3/4 Bolivians, great bloodlines – males \$300-\$1000; females \$1500-\$2500. Free rebreeding with any female purchase. Moonstar Llamas, Guffey, CO – Rodney Bryan. 719-689-9760. (11/01)

Spinning Llama and Alpaca New 2nd Edition now available – 6 additional pages, including 2 new projects. \$12 + \$2 shipping + 45¢ CO tax. Chris Switzer, Box 3800, Estes Park, CO 80517. (11/00)

Ranch and Farm Supplies - We have everything, guaranteed best prices. Halters, leads, brushes, grooming, show supplies, shears, signs, packs, feeding, watering, carts, scales, chutes, cria care, wormers, vaccines, probiotics, electrolytes, weathervanes, signs, books, videos, clothing, jewelry, fun items, more. **FREE COLOR CATALOG.** USEFUL LLAMA ITEMS, CALEDONIA, MI. 1-800-635-5262. www.useful-items.com. (5/00)

For Sale – Circuiteer II blower – like new, used only a few times, \$265 or make offer. Marilyn Arnold, Franktown, CO 303-841-5126 or arnoldhm@earthlink.net.

Outstanding Breeding Stock – proven and future studs, show prospects, 4-H performance prospects: excellent selection of llamas (male and female) from \$500. Breeding stock is guaranteed. Bred females carry pregnancy guarantee. Outstanding N. American bloodlines (Gandy Dancer, GLL Java - Crazy Mt. Man, Andean Spirit, Maxwell's Plum, Huckleberry Finn) with some mixes – Bolivian (Oko Castizo, El Rey Blanco, LW Kissam, Antares), Chilean (Sr. Rojo, Range Rover, Richochet, Leroy Brown) and Peruvian (Peruvian Pardo, Escondio – El Fuerte). Some females bred to our new 1/2 Chilean Richochet son, MGF Nottingham. Llamarage, PO Box 574. Platteville, CO – Mary Beth Hart-sough, 970-785-2463.

McCloud's Gunslinger – DOB 10/17/97. Son of Marshal Sam McCloud. Beautiful heavy woolled intact male. Excellent conformation. Cinnamon red with white and black on face and ears. Blood typed. \$500.

Guard Llama – gelding, excellent working guard llama or companion, very gentle, \$350. **Grooming chute** – very sturdy, solid floor, no rust, \$200. Linn's Llama Lland, Linn Jackson, 970-245-3833. (5/00)

Journal of the Rocky Mountain Llama and Alpaca Association Advertising Kit

Last Revised: August, 1999

- All ads/art work is expected to be camera ready. Ad design is available as follows:
- Business card size-\$5, 1/4 page \$10, 1/3rd - \$15, 1/2 - \$20, 2/3rd-\$25, full page \$30. Call Marilyn Arnold (303-841-5126) for mailing instructions.
- Photos can be color or black and white, although color is preferred.
- This publication is black and white. Line screen is 115 lines/in.
- Each spring a promotional issue is printed. The center layout and outside cover is printed with a base color. An additional copies are printed for distribution to the public throughout the year.
- Advertising deadlines are: February 1, April 1, July 1 and October 1. Mail ads to: Marilyn Arnold - 11483 E. Ponderosa Lane - Franktown, CO 809116-9319
- Include check payable to RMLA, include any design costs – full payment for all advertisement MUST accompany ad(s)!

Classified Ads

RMLA Member - 50 words	\$5.00
RMLA non-Member - 50 words	\$10.00
For more than 50 words - 15¢ per word	

Advertising Rates

All rates are per issue.	RMLA Member		Non-Member	
	1 or 2 issues	Same ad 3 or more issues	1 or 2 issues	Same ad 3 or more issues
Business Card	\$10	\$10	\$15	\$15
1/4 Page	\$20	\$18	\$30	\$27
1/3 Page	\$30	\$27	\$45	\$40.50
1/2 Page	\$40	\$36	\$60	\$54
2/3 Page	\$55	\$49.50	\$82.50	\$74.25
Back Cover	\$50	\$45	\$75	\$67.50
Full Page	\$65	\$58.50	\$97.50	\$87.75
Inside front cover	\$80	\$72	\$120	\$108
Inside back cover	\$80	\$72	\$120	\$108
Promotional issue only (with base color)				
Full Page per page (Center layout)	\$135	\$121.50	\$202.50	\$182.25
Back Cover	\$115	\$103.50	\$172.50	\$155.25

Display Ad Sizes

Business Card 3 1/2" x 2"

1/4 Page 4 3/4" x 3 1/2"

Half Page Horizontal 4 3/4" x 7"

1/3 Vertical 4 5/8" x 9 1/2"

1/3 Page Horizontal 3 1/8" x 7"

Half Page Vertical 4 3/4" x 9 1/2"

2/3 Page Horizontal 6 3/8" x 7"

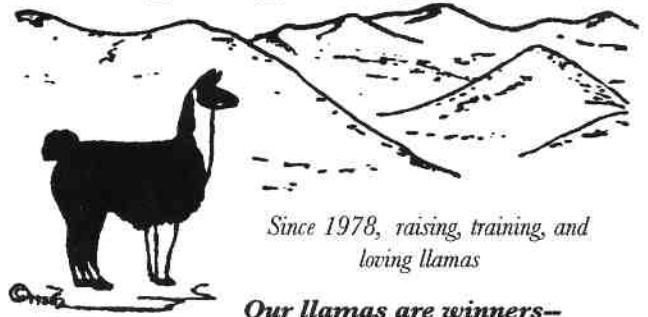
Back Cover 8" x 7"

Full Page 9 1/2" x 7"

Index to Advertisers

Broken Windmill Ranch	19
Cache La Poudre Minerals	2
Caring for Llamas and Alpacas	15
Hance Ranch	13
Llamarage	16
Mt. Sopris Llamas, Ltd	16
Pheasant Hill Farm	27, 32
Quality Llama Products	31
Ridge Mist Llamas	2
Rocky Mountain Llamas	23, 30
Rocky Mountain Llama Fiber Pool	30
SwitzerLand Alpacas	30
Useful Llama Items	28
Winding Trails Llamas	13, 31

Rocky Mountain Llamas



Since 1978, raising, training, and loving llamas

***Our llamas are winners--
in the show ring and on the trail.***

Our specialty:

Classic medium & light-wooled llamas, sound, athletic, and well-trained from our established lines of champion North American breeding stock.

We offer:

- ~Females, from weanlings to proven Grand Champions
- ~Males for all purposes, potential studs, packers, pets
- ~Stud service by our proven, champion, younger males

Reproductive soundness guaranteed on breeding stock

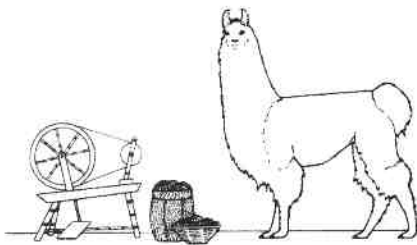
Post-purchase support based on over 20 years experience in all llama activities:
Breeding, training, packing, driving, public relations, training clinics.

Visit our website: <http://www.rockymtllamas.com>

Phone: 303-530-5575 E-mail: llamas@rockymtllamas.com

Bobra Goldsmith ~ 7202 N 45th St. Longmont, Colorado 80503

ROCKY MOUNTAIN LAMA FIBER POOL



We're now collecting llama and alpaca fiber for processing in March.

Please send for our free brochure which describes Fiber Pool services or phone for information.

Sharon Beacham
2380 - 95th Street
Boulder, CO 80301
303/ 666-9437

Karen R. Kinyon
2933 E. Mulberry
Ft. Collins, CO 80524
970/ 484-6241

ALSA Certified Llama Fiber Judges

SWITZER LAND ALPACAS

ALPACA *babies*

ALPACA *books*

ALPACA *hats*

ALPACA *jackets*

ALPACA *scarves*

ALPACA *shawls*

ALPACA *sweaters*

ALPACA *wool*

ALPACA *yarns*

LLAMA *yarns & roving*

*Special equipment and tools
for carding, spinning, and weaving*

Chris Switzer • Box 3800 • Estes Park, CO 80517
(970) 586-4624 • FAX (970) 577-0775

MAIL
ORDERS
AVAILABLE

COME VISIT
FARM &
STUDIO





**FREE
CATALOG**

Quality LLama Products & Alternate Livestock Supply

"Serving the Alternate Livestock Industry Since 1979"

Full Line of Products for llamas, alpacas, miniature donkeys & horses, and goats

80 page catalog
of top quality products
at affordable prices

Halters
Driving Harness
Barn Supplies
Books
Gifts
Spinning Supplies

Grooming Supplies
Packs
1st Aide
Videos
Farm Banners
Craft Supplies

Ph. 800-638-4689

Fax: 800-580-5262 E-mail: sales@llamaproducts.com

On Line: <http://www.llamaproducts.com>

Quality LLama Products
Ed & Nancy Chlarson
33217 Bellinger Scale Rd
Lebanon, OR 97355

WINDING TRAILS LLAMAS

Champion Llamas from ALSA Champion Bloodlines

**FOR SALE • Show Llamas • Working Llamas
• Companion Llamas**

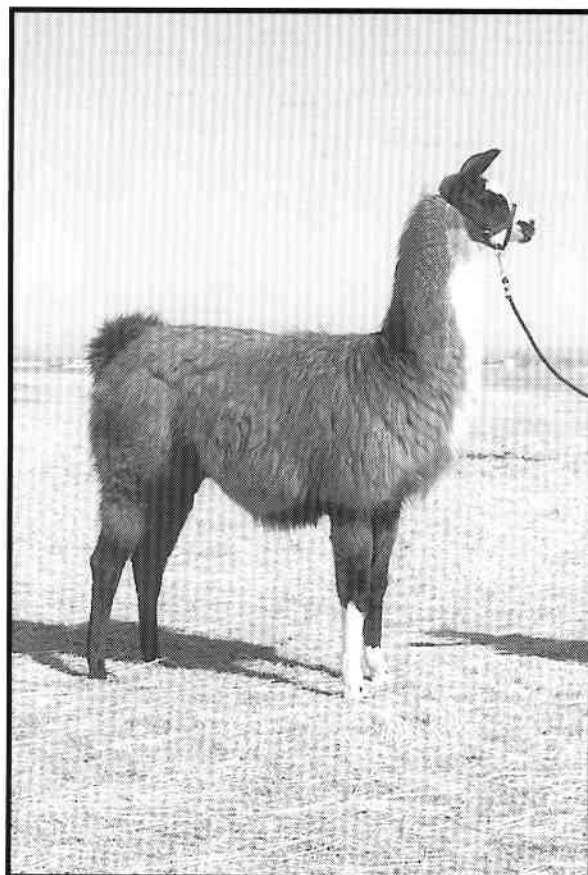
**Packing • Orientation Classes
Hikes • Outings • Lunches
Rentals Available**

Call or Visit our Website:



Jan Redenbarger
Winding Trails Llamas
P.O. Box 7096
Crescent Branch
Golden, CO 80403

(303) 642-0140
www.windingtrailslamas.com



*Seven Cadfael offspring went to the show.
All seven stood in the judge's final row.
When each class was over, the owners wore a smile.
It's fun to show a llama that was sired by Cadfael!*

National Western Stock Show - 2000

PHF Cadfael's Banner - owned by Carolann & Kim Evans

*1st Place Two Year Old S/M Wool Male
Grand Champion S/M Wool Male*

Shay Blanc - owned by Lougene & Ron Baird

*1st Place Juvenile S/M Wool Female
Grand Champion S/M Wool Female*

PHF Cadfael's Marengo - For sale

1st Place Yearling S/M Wool Male

Cadfael's El Nino - owned by Jane Sheppard & Jerry Uherek

*3rd Place Young Pack Llama
4th Place Two Year Old S/M Wool Male*

Cadfael's Shooter of Lladly Hawk Llamas - owned by Evans

4th Place Juvenile Heavy Wool Male

Blew By You - owned by Evans

5th Place Two Year Old S/M Wool Male

PHF Cadfael's Castellan - For Sale

8th Place Yearling S/M Wool Male



**Pheasant
Hill Farm**
Llamas

**John & Sharon
Beacham**

2380 - 95th Street
Boulder, CO
80301-4937

303-666-9437
(Denver area)

1-800-465-2567

Fax: 303-604-1730



Cadfael - ALSA Halter Champion

*1st Place Get of Sire - NWSS - 2000
3 outside breedings left in 2000*

www.phf-llamas.com

Email: beachams@phf-llamas.com

RMLA
11818 W. 52nd Avenue
Wheat Ridge, Colorado 80033-2032

U.S. Postage
PAID
Kansas City, MO
Permit No. 6035

Address Service Requested