

May
1999

Journal
OF THE
RMLA



Rocky Mountain Llama and Alpaca Association

© 1999 RMLA



INTRODUCING SV One-Eyed Jack's

first offspring

JACK'S THUNDER

LIGHTNING JACK



DOB: 10-25-98



DOB: 9-16-98

For sale at

ROCK - n - M LLAMA RANCH

*Check out our web page or come by to see
our newest cria and other select sale llamas.*

Patti Morgan
Route 3, Box 177-1
Arkansas City, KS 67005

316-442-4996
fax: 316-442-1590
email: pmmorgan@horizon.hit.net
www.rock-n-mllamas.com

in this issue...

EVENT CALENDARS: RMLA-SPONSORED	6
NON-RMLA SPONSORED	45
FROM THE DESK OF THE PRESIDENT	8
RMLA BOARD MEETING FEBRUARY 27, 1999	10
COMMITTEE REPORTS	14
1999 RMLA CONFERENCE & ANNUAL BUSINESS MEETING	16
FIBER CO-OP	18
YOUTH AND 4-H CORNER	20
FARM FASHIONS: COMFORT, DESIGN, AND FUN	22
RINGO GETS A REAL JOB	24
CARING FOR LLAMAS AND ALPACAS: A 10TH ANNIVERSARY LOOK BACK	28
HOOKED ON LLAMAS: THE KAUFFMAN'S STORY	32
LIVING WITH LLAMAS: OUR STORY	36
TWINS: TWICE AS NICE? OUR EXPERIENCE WITH MULTIPLE BIRTHS	39
BUILDING TRUST	41
THE STORY OF ROMAN	42
JUST FOR KIDS	44
CLASSIFIED ADS	46
ADVERTISING KIT	48
MEMBERSHIP FORM	48

This issue's cover photo was taken at Machu Picchu
by Andy Marques.

ANDY MARQUEZ

GALLERY

FINE ART PHOTOGRAPHY

ANDY MARQUEZ 303.797.6040

2509 WEST MAIN STREET **1.888.MARQUEZ**
LITTLETON, CO 80120 (627.7839)

Rocky Mountain Llama and Alpaca Association

Board of Directors

<i>President</i>	<i>President-Elect</i>	<i>Vice-President</i>	<i>Secretary</i>	<i>Treasurer</i>	<i>Past-President</i>
Bruce Ellis 10725 E. Camelot Dr. Franktown, CO 80116-9471 (303)688-9466 bee@bee.com	Ken Rogers 2068 CR 152 Divide, CO 80814 (719) 687-1155 (719) 686-1686 fax kenr@codenet.net	Jerry Dunn 14550 W. 50th Ave. Golden, CO 80403 (303) 277-1129 (303) 277-1129 fax beartrak@gte.net	Jan Redenbarger P.O. Box 7096 Golden, CO 80403-0100 (303)642-0140 (303)642-1602 fax jredenba@ix.netcom.com	Lougene Baird 2210 Pine Wood Rd. Sedalia, CO 80135 (303) 688-1887 (303) 688-6814 fax lougene@att.net	Bob Riley (non-voting) P.O. Box 1189 Lyons, CO 80540 (303)823-5409 (303)823-0643 fax llama@llama.org

Other Volunteers

<i>Librarian</i>	<i>Marketing</i>	<i>Bookstore Managers</i>	<i>Membership</i>	<i>4-H and Youth</i>	<i>Fiber</i>
Sharon Herbold 15350 Highway 83 Colorado Springs, CO 80921 (719) 495-3092 (719) 495-3092 fax ppwoolies@earthlink.com	Chuck Stewart 2200 Twylby Rd. Larkspur, CO 80118-5700 (719)488-5594 (719)488 5601 fax alpacastew@aol.com	Keith & Katy Wegner 17190 W. 57th Place Golden, CO 80403-1113 (303)273-9445 k2wegne@ibm.net	Bob & Barbara Hance 11818 W. 52nd Ave. Wheat Ridge, CO 80033-2032 (303)422-4681 (303)422-3568 fax hancelama@att.net	Grace C. Gerber 10290 E. Jones Rd. Larkspur, CO 80118 (303) 814-0047 ggerberlff@aol.com	Sharon Beacham (303)666-9437 and Karen Kinyon (970)484-6241

Committees

Committee	Liasion	Chairperson	Telephone
Finance	Ken Rogers	Ken Rogers	719-687-1155
Continuing Education	Jerry Dunn	Jerry Dunn	303-277-1129
Spring Conference	Baird/Dunn	Judy Sealy	970-241-7921
4-H and Youth	Jan Redenbarger	Grace Gerber	303-814-0047
Marketing	Bruce Ellis	Chuck Stewart	303-488-5594
Nominations/Elections	Bruce Ellis	Craig Dierksen & Rosie DeLullo	303-621-2584
Research	Bruce Ellis	Ron Baird	303-688-5445
By-Laws	Jerry Dunn	Jo Riley	303-823-5409
Fiber	Bruce Ellis	Sharon Beacham	303-666-9437
Membership	Lougene Baird	Bob & Barbara Hance	303-422-4681
Library	Lougene Baird	Sharon Herbold	719-495-3092
Events Committee	Jerry Dunn	Jerry Dunn	303-277-1129
Publishing	Lougene Baird	Newsletter: Mary Mauz	303-526-0092

Journal Committee

Content

Teri Nilson Baird
28825 CR 5
Elizabeth, CO 80107-6704
303-646-4373 303-646-5856 fax
brokenwindmill@bwn.net

Advertisement

Marilyn Arnold
11483 E. Ponderosa Lane
Franktown, CO 80116-9319
303-841-5126

Layout & Design

Ron Hinds
38620 CR 29
Elizabeth, CO 80107-8702
303-646-2665 303-646-2654 fax
sdflama@bewellnet.com

Journal Schedule

Issue	Deadline
February	January 1
* May	April 1
August	July 1
November	October 1

* Promotional Issue

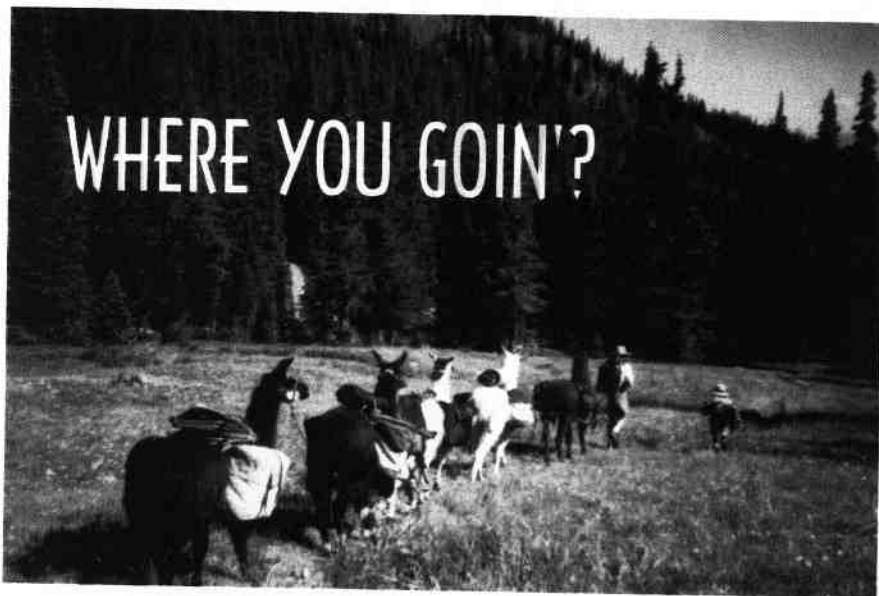
Advertising kit is near the back of every Journal.

<http://www.rmla.com>

© 1999 The Rocky Mountain Llama and Alpaca Association
Reproduction of articles herein is authorized subject to written permission being obtained from the individual authors. "Exchange Newsletters" may reproduce articles as needed so long as the author and the publication are given credit for the original work. Exception: Articles denoted with © or "ALL RIGHTS RESERVED" *must* get approval from the author.

NOTES: The information contained in this Journal is not intended to be a substitute for qualified professional advice. Our readers are encouraged to consult with their own veterinarian, accountant or attorney with any questions concerning their animals or business operations. RMLA is not responsible for any losses resulting from reader's failure to heed this caution.

The views expressed by the writers of the articles herein are not necessarily those of the Rocky Mountain Llama and Alpaca Association, its board and/or its members.



WHERE YOU GOIN'?

WE'RE HEADED FOR THE LLAMA OPEN HOUSE
AND FUN DAY
JUNE 12, 1999
9 AM to 5 PM

AT: RANCHO LINDA VISTA
7411 WELD CO. RD. 7
ERIE, COLORADO

Take Hwy 52 , 1 mile West of I-25, then
1.5 miles North on WCR 7, or
3.6 miles South on WCR 7 from Hwy 119

LLAMAS TO WALK

LLAMA PACKING DEMONSTRATIONS

LLAMAS FOR SALE

LLAMAS QUESTIONS ANSWERED

LLAMA SHOW PROSPECTS


Llamarage

Mary Beth Hartsough
970.785.2463


Rancho Linda Vista

Carlos Mendoza
303.772.2854

Winding Trail Llamas



Jan Redenbarger
303.642.0140

Calendar of RMLA-Sponsored Events

Please contact Jerry Dunn 303-277-1129 to find out how to have RMLA sponsor your event.

MAY

- Jelly Bean Classic Llama Fun Day, Arvada, CO May 15, 1999 Contact Mary Mauz 303-526-0092
- Banana Belt Llama Classic, May 22, 1999 Delta County Fair Grounds, Hotchkiss, CO For more information contact Dottie LaRue, Superintendent, P.O. Box 1502, Paonia, CO 81428 (970)527-3181.
- Western Slope Llama Classic, Hotchkiss, CO, May 23, 1999 Contact Cliff Harding 970-527-5122
- New Mexico Spring Fling, Santa Fe, NM, May 1-2, 1999 Contact Sarah Moody or Kathy Walker 505-455-3629

JUNE

- Performance Pack Trials, June 18, 1999 - Contact Bob Riley 303-823-5409.
- Estes Park Wool Market, June 19-20, 1999 Contact The City of Estes Park - Linda Hinze 970-586-6104, 970-586-3661 fax or e-mail: lhinze@estes.org
- Red River Rendezvous Llama Show, Contact Mary Summers 505-867-3442

JULY

- Douglas County Summer Classic Youth Show, Castle Rock, CO - July 11, 1999 - Contact Lougene Baird 303-688-5445
- Fairplay Llama Pack Race, July 24, 1999, Contact Roger Miller 719-749-0119
- The Big Horn Rendezvous, July 30 - August 1, 1999 Sheridan, Wyoming. ALSA Sanctioned. For more information or a premium book contact: Barbara Coffman-Flinn, P.O. Box 541, Story, WY 82842, 307-683-2548, E-mail: cloudpk@wavecom.net or Lori Hink 1651 N. Mountain View Dr., Sheridan, WY 82801, 307-674-9668, E-mail: jlhink@webtv.net

AUGUST

- Boulder County Youth Show, Contact Mary Beth Hartsough 970-785-2463

SEPTEMBER

- LOCC Summer Classic Llama Show, Colorado Springs, CO - September 11-12, 1999 Contact Mark Wittrup 719-683-2834

OCTOBER

- Candy Corn Fun Classic, Silt, CO October 2, 1999, Contact Mary Mauz 303-526-0092
- ALSA Regional Llama Show, Denver, CO, October 16-17, 1999 Contact Jo Riley 303-423-3409
- RMLA Annual Meeting and Mini-Conference, Grand Junction, CO, October 23-24, 1999 Contact Judy Sealy 970-241-7921

JANUARY

- National Western Stock Show Llama Show, Denver, CO, January 8-9, 2000 Contact Jerry Dunn 303-277-1129

The RMLA Board has requested that all non-RMLA sponsored events be placed elsewhere in the Journal. You may find additional events on page 45.

RANCH SHOWCASE from USEFUL LAMA ITEMS

The Ranch Showcase is a collection of top line products that will make your ranch look and function at its best.

Heritage Fence

Vinyl fencing. No breaking, warping, rusting oxidizing or painting. Easy to install and maintenance free. Lifetime warranty. Suitable for any climate. Prices are quoted individually due to the unique aspects of each project.

ITEM #075-M



Heritage Park Bench

An enduring vinyl bench to put in your favorite spot to relax and watch your herd.

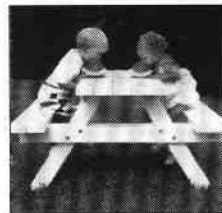
ITEM #075-PB - PRICE \$149.00 PLUS SHIPPING



Heritage White Vinyl Picnic Table

An enduring vinyl table for fun and friends.

ITEM #075-PT - PRICE \$295.00 PLUS SHIPPING



Nelson Automatic Waterers

No more water to carry or ice to break. Comes in 24" Stainless Steel or Aluminum, 10" Stainless Steel or Aluminum, or 10" Wall Model. Multiple unit purchase discounts available. Regular prices start at \$239 for 10" aluminum.

- Durable
- Automatic
- Easy to Clean
- Economical
- 3 year warranty on heater and thermostat



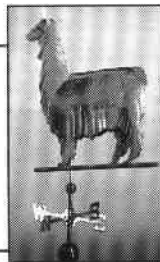
Fly Control Program

This seems like an odd item for ranch showcase. Not really. Nothing can be more annoying to you or your guests or your animals than a lot of flies. Reduce them drastically with a good prevention plan based on use of fly parasites. Call us for pricing and plans.



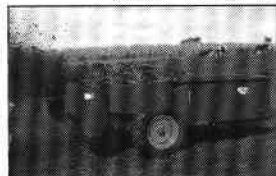
Beautiful Copper Full Body Weathervane

Llama \$595
Alpaca \$1395
Suri \$1595



Manure Spreaders

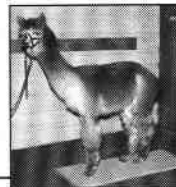
Available in 25 bushel ground driven models up to large PTO models. Prices start at \$995.00. 20 year guaranteed poly floor option. The best small spreaders built give you years of convenience and reliability.



Digital Platform Scales

Weigh Tronix Scales. \$1,295 Llama size, delivered. \$1,245 Alpaca size, delivered.

- Low profile non-skid surface perfect for easy step up
- Weighs accurately up to 1,000 lbs. in 2 tenths of a pound
- Tare feature for easy cria weighing
- One year warranty
- The best digital available
- Computer compatibility available



Chutes

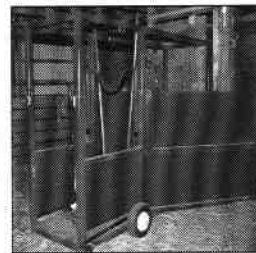
The Best Care Station (Chute) is now even better! Features include:

- Padded, movable neck restraints
- Double door system on each side—open fully or fold down 1/2 door for access
- Narrow width for safe proper restraint
- Strong welded steel
- Stained and painted
- Now with removable yoke for head restraint

Standard: \$1,095.

Deluxe w/wheels, mats, and belly sling: \$1,295

Alpaca size-Standard: \$895 Deluxe: \$1,095



These chutes are used at major llama veterinary universities including Auburn, Ohio State, Oregon State and Michigan State

Corral Panels

New sturdy lightweight 5'x9' panels. Use for corrals of all sizes, creep feeders, temporary pens, gates, blocking off areas, permanent pens, shows. Very handy easy to set up. Fit into most trailers, convenient size, lightweight. Discounts on larger orders. Gate Combinations also available. Call for pricing and shipping.



Useful Llama Items Useful Alpaca Items

3540 76th Street • Caledonia, MI 49316

Telephone: 800.635.5262
Fax: 616.698.0870
E-mail: sales@useful-items.com
Web Site: www.useful-items.com

From the desk of the President...

By Bruce Ellis, Lazy B Llamas, 303-688-9466 303-814-2142 fax, bee@bee.com, http://lazyb.com

This is a very exciting time to be a member of RMLA! There are so many different things going on and our diverse activities demonstrate just how versatile our wonderful animals can be. Let me start with our events. As of this writing RMLA has 24 events planned in 1999. There are many different ways that we each choose to enjoy our animals and I encourage you to join in whenever possible and have fun with your critters. Your board has decided to forego the traditional spring conference and replace it with a "RMLA Fun Day" event, so stay tuned for more details to follow on that topic.

The RMLA Fiber Coop is nationally known and is clearly setting the standard for other organizations like ours to follow. Because we intend to remain the leader, we have just committed additional funding to the RMLA Fiber Coop in the form of an official RMLA Fiber Coop Trailer. This will allow for less wear and tear on both the RMLA Fiber booth and its dedicated volunteers.

There has been a lot of activity around supporting our members' sales and marketing efforts since that was the membership's top priority from our last two conferences. The challenge we face is how we can support our members and give them the tools that they need to successfully sell their animals without being redundant with other efforts that are in place in the industry. We are working closely with the newly formed Lama Lifestyle Marketing Association (LLMA). I am pleased to announce that RMLA is the first regional organization to participate in that effort. This will allow RMLA members to participate in that program without incurring an initial fee to do so. I encourage each of our members to find out more about how they can participate in that plan. In addition, the RMLA Marketing Committee will soon announce some exciting new tools that are available to the RMLA membership to help them promote llamas on and off their ranch.

Your research committee is looking at the most efficient use of our research funding. There is a tremendous

need for research in the llama industry and RMLA is committed to continue funding of that research. We want to be sure that the research we fund be of the most importance and benefit of the members of RMLA given the nature of the rapidly changing dynamics in the industry. We will not fund activities that we believe are redundant or that are not in the best interest of our unique membership. With the feedback you gave us at the last conference, the research committee is in the process of determining how those dollars will be spent going forward.

RMLA Youth and 4H has so much going on these days. Many new activities such as Discovery Days make this one of RMLA's most active groups. This is truly one of the most exciting committees in RMLA and they continue to present themselves, and their animals, in a very positive public light.



One of the very tangible benefits of belonging to RMLA is the RMLA library. Whenever I speak to new llama owners about joining RMLA this is always one of the first benefits that I share with them. For the cost of return postage, members have access to one of the largest single sources of llama information in the country: not just books, but videotapes and

articles on a variety of topics. The library continues to grow every day. Sharon Herbold, our Librarian, is just one of the many dedicated committee chair people in RMLA.

The RMLA Journal and RMLA newsletters are distributed to our members in every state in the continental US, except 13, and in several countries out side of the US. At last year's membership count, The RMLA member body is an active and energetic bunch, numbering 576 at the end of 1998. As of March of this year we are on the same membership pace as last year with many volunteers serving on various committees. I encourage each of you to get involved in the committees that interest you. One of the true joys of owning llamas is that we can utilize them in so many different ways. Each of these committees and their chairperson are listed in the front

of each RMLA Journal along with their telephone numbers. That chairperson has been commissioned by your RMLA Board to run that part of the RMLA business, so if you have ideas or just want to pitch in, please give them a call.

Speaking of the RMLA Journal and the RMLA Newsletter, they are always on the lookout for interesting articles. We have a wonderful staff that compiles these publications, but they need help from all of us to contribute articles and other content. Even if you feel like you don't have freelance writing skills, but you have an idea for an article or if you would like to see an article written on a certain topic, then give them a call.

The RMLA website continues to grow and improve. Bob Riley has secured the domain of "www.rmla.com" and has been hard at work transferring everything to that address. It is now up and running so, drop in online and check us out at <http://www.rmla.com>.

It is encouraging to see information about RMLA and our activities disseminated in so many and creative ways. In this age of electronic communication it is important to remember that we seem to be at our best when we are with our animals and each other. It is my wish that we continue to remember that we will always have debate within our industry, but that we do so in a manner that is respectful of each other and the other person's opinion.


Finally, I was reflecting recently on some of the good times I had personally spent with RMLA members this past year and it made me smile.... I remember standing anxiously at the river crossing at the Fairplay Pack Llama Race, and then joining in to help others that decided to venture across. I also remember being very wet for the rest of the day... Standing in line in the show ring with many of you as we awaited the judges decision... Proudly watching the FIMLA Fiber Coop volunteers hard at work at the ALSA Grand National/ALSA National Conference... Working closely throughout the year with what I believe is a terrific RMLA board... While on a packing trip, running into other RMLA members enjoying their llamas at 11,000 feet as I was doing... and then there was the Golden Gate Classic, with so many llamas peacefully staked out in a vast meadow, next to a tepee... while we sat around a campfire telling tales under the now legendary tiki torches.

If you are not an RMLA member, then talk to one about joining. It is easy to do— there are forms in the journal or you can join online at <http://www.rmla.com>

Best Regards,




Bruce Ellis
President Rocky Mountain Llama & Alpaca
Association



**COLLEGIATE
P·E·A·K·S**
LLAMAS

SUSAN & JOE GREINER
P.O. BOX 1550
BUENA VISTA, CO 81211
719-395-2112



Wheatfield Llamas

Home of Full Bolivians
WL Calbert Cheaney*
T.B.F. Keiko*

Rex & Dalene Reinecker
RR1 Box 43A
Quinter, KS 67752
785-754-3996
rfeedlot@ruraltel.net

RMLA Board Meeting

February 27, 1999

By Jan Redenbarger, RMLA Secretary - Winding Trails Llamas - P.O. Box 7096 Crescent Branch - Golden, CO 80403 303-642-0140

Board Members present:

Bob Riley, Bruce Ellis, Lougene Baird, Ken Rogers, Jerry Dunn, and Jan Redenbarger

Notes and motions from meeting:

RMLA Journal

The Board received a proposal from Ron Hinds, RMLA Editor, to reorganize the journal duties into several positions. Ron would like to continue working with the journal in the capacity of the camera-ready needs. He already has the necessary computer software and hardware and the experience. The other aspects of the journal: advertising and procurement of articles would be managed by one or two other people working closely with Ron Hinds and Lougene Baird, the Board liaison. The May issue of the Journal will be general interest articles since this is the promotional issue and is distributed to the general public at RMLA-sponsored events.

Motion: (Jerry Dunn) The RMLA Board will organize the RMLA Journal into three coordinators: advertising, text, and layout. The Journal will be published quarterly. Lougene Baird will facilitate as liaison between the coordinators and the Board for guidance and meeting deadlines.

Second: Lougene Baird

Motion Passed

Motion: (Ken Rogers) Compensate the RMLA Journal staff with a half page ad. Assistants to receive a business card ad for their contributions to the journal..

Second: Bruce Ellis

Motion Passed

RMLA Insurance

We have new insurance with the Insurance Association of Estes Park, an affiliate of American States Insurance. The Insurance Association of Estes Park has experience underwriting insurance for horse shows and outfitters and was willing to work with RMLA and our specific needs. The Board also discussed the need for coverage for the officers and directors of RMLA.

Motion: (Ken Rogers) To purchase insurance for the Officers and directors for liability coverage

Second: Jerry Dunn

Motion Passed

It was noted that the bylaws should be amended to include an indemnification statement for the officers.

RMLA Fiber Trailer

The fiber co-op has requested from the Board that RMLA purchase a small trailer to store and transport the fiber booth. This would minimize wear on the booth and be efficient for keeping all of the articles in one place when other coop volunteers take the booth to events. The trailer would have the RMLA logo on it with telephone numbers and web site address. This was discussed and the Board felt that funding the trailer was a good idea, along with an increase in consignment fees to help offset the cost. Presently, the consignment fee is 10% for those volunteers who work the booth, 20% for those who do not work and 0% for the managers of the booth. The increase suggested would be 15% for those who work, 30% for those who do not and 0% for the managers. The Board agreed that the maximum expense for the trailer would not exceed \$3000. Jerry Dunn will collect all the information on trailer bids from Karen Kinyon and she and Jan Redenbarger will get together with Karen and Sharon Beacham to decide on a trailer.

RMLA Participation with the Morris Foundation

The Research Committee Report submitted to the Board by Ron Baird stated that the committee has been considering various proposals for funding. Among these is the formation, jointly with another organization, of a lama death record depository. The purpose of this long term project would be to more accurately determine the cause of death (i.e., old age, rattlesnake bite, trailer accident heat stress, etc.). This in turn would allow the lama industry to more efficiently allocate its expenditures of research monies toward those studies that have practical benefit to owners and their care providers. The Board supports this recommendation. An appropriate group or organization will be identified to carry out this proposal. Bruce Ellis will speak to Ron about RMLA's position on continuing to fund the Llama Medical Research Group (LMRG).

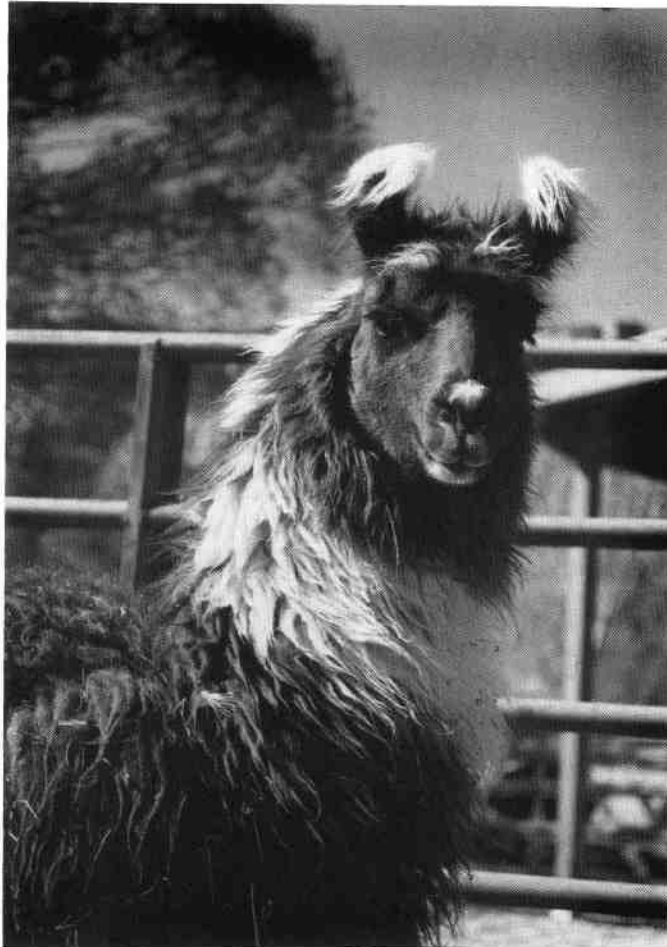
ALSA Marketing Plan/RMLA Plan interface

A national mailing of the marketing plan was sent to approximately 9300 addresses. This was put together by the Llama Lifestyle Marketing Association (LLMA) and

GRAND VALLEY LLAMAS

DDL DREAMWORKS

**FULL CHILEAN HERDSIRE
TOP FLIGHT x CHARO PL**



Limited outside breedings available.

Male: D.O.B. December 30, 1995

Judy Sealy

593 19-3/4 Road * Grand Junction, CO 81503

(970) 241-7921

ALSA. They will be asking llama owners to participate in a directory. RMLA will purchase a half-page advertisement in this directory. LLMA has also made a promotional video that can be purchased to use as a marketing tool for individuals. Ken will put together a letter to the members describing procedures to order this video.

Motion (Bruce Ellis) RMLA will purchase a half-page advertisement in this directory.

Second: Ken Rogers

Motion Passed

Fall Conference Grand Junction: October, 1999

Judy Sealy will chair the fall conference. She is already working with volunteers on the details. The conference will be a full day on Saturday followed by dinner and Board meeting and a half day on Sunday.

Officer Reports

Jerry Dunn presented the Sponsored Events Application Form and guidelines (see centerfold). Also included is the list of RMLA-sponsored events for 1999.

Lougene Baird presented the treasurer's report:

General Operations:	\$21771.52
Research:	7,225.40
Life Member:	4,670.32
Liquid Assets:	23,640.58
CFLA Production:	10,011.04
CFLA Gen. Op:	1,037.64
Total	\$68,356.47

All deposits are made and all bills are paid.

Library: No special needs at this time.

Membership: 449 members

12 life members

156 ranch members

21 youth members

15 new members have been added since January 15, 1999.

CFLA: The bookstore had a record sales start to 1999. From January 1 through February 27, 266 books were shipped.

The meeting was adjourned.


Motion: Bruce Ellis

Second: Ken Rogers

Motion passed



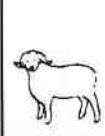
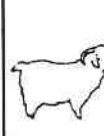
Respectfully submitted,
Jan Redenbarger, Secretary






Laserscan

For Individual Animal
Fiber Diameter Measurement

**FIBER
HELP**



FAST ... ACCURATE ... AFFORDABLE.

- Select 2" square sample from mid-side
- Place in plastic bag for shipping
- Identify animal's sample by:
 - Name, ID Number, Registration
 - Breed, Sex, Age (DOB)
 - Location
 - Date Sample Taken

Costs:

1-25 @ 5.00 ea


26-50 @ 4.75 ea

51+ @ 4.50 ea

Pre-pay for three tests or fewer.

Yocom-McColl Testing Laboratories, Inc.
 540 West Elk Place • Denver, CO 80216-1823 • USA
 Phone 303-294-0582 • FAX 303-295-6944
 E-Mail: ymccoll@ix.netcom.com Web Address: <http://www.ymccoll.com/>

TRAINING BREEDING



Rainbow Valley Llamas

"The Ultimate R.V."

Mary Summers • Reid Langerman
17 Nighthawk Way • Placitas, NM 87043 • (505) 867-3442


PARADISE RANCH

Alpaca & Llama Breeding & Boarding

Mike & Patty McLane
* Proprietors *


PARADISE RANCH
23699 County Road 150
Agate, Colorado 80101

(303) 841-8535 (303) 621-9129
E-Mail MAMCLAN@AOL.com



Page 12

May, 1999 — RMLA



Alpaca Breeders

O F T H E R O C K I E S

Looking for an investment, maybe something to retire on? Hey, no high-pressure here, just visit a local Alpaca ranch or farm near you and see for yourself why these wonderful creatures are called the World's Finest Livestock Investment.

Alpaca Breeders of the Rockies is nearly 70 members strong in 7 states and are here to connect people with Alpacas.

Contact us for a Membership Directory — This directory has maps, yes maps, to each of the Alpaca ranches so you can schedule your weekend drives painlessly.

Catch us on the internet at our web site:

<http://www.alpacabreeders.org>

or call/write at:

Alpaca Breeders of the Rockies

8950 W. Jefferson Ave.

Denver, CO 80235-1702

(303)988-3080

We look forward in seeing you... Oh yes, bring your camera when you visit, you're going to need it!

Discover the Treasure of a Lifetime. Discover Alpacas.

Committee Reports

Library News

Sharon Herbold, Pikes Peak Woolies, Colorado Springs, Colorado

Hopefully, everyone has found the updated library list. Instead of having loose papers that could be misplaced, it was included in the back of the 1999 Membership Directory.

New items added to the library recently include:

Click and Reward, Vol. II by Jim Logan

The second video teaches how to use clicker training on behaviors such as kicking and spitting. It also includes shortcuts to shaping behaviors and increasing the attention span of your animals.

You, the Ultimate Llama Groom by Danielle Pierce

This video is for the inexperienced as well as the experienced groomer. It introduces ideas and methods to cut your grooming time. Specifically it talks about ways to use your blower more effectively, giving baths, and brushing techniques.

Body Scoring Llamas and Alpacas by Shannon Smith

This book contains easy to follow diagrams to help evaluate the conditioning of camelids.

I try to find a variety of new items for the library; however I'm sure there are items that I miss. If you have any topics or specific items you would like included in the library, please let me know.

A final note: Chris Switzer recently donated two items to the library. Thanks Chris, for your book, Spinning Llama and Alpaca, 2nd ed., and Drew and Lulu, a children's story.

Membership Report March 30, 1999

Bob & Barb Hance, Hance Ranch, Wheat Ridge, Colorado

Sorry to report that our total membership is down from this date last year by 37 memberships.

However our Junior total is only down one. Ranch memberships are up by 17 and we gained two Life Memberships for a total of 12. So far this year we have 34 New memberships.

RMLA has a lot to offer and we ask you, our members, to encourage others to join.

Hope you have looked at the list of events that RMLA is sponsoring for 1999 and highlighted the ones you and your family are interested in attending. The events are pretty well balanced between fun events, conferences/clinics, and shows. One of the events which was particularly successful for the llama and alpaca folks in southwestern Colorado was the Four States Agriculture Expo in Cortez, Colorado, in March. Nearly 10,000 spectators attended over a three-day period.

Not all llama happenings are sponsored by RMLA, but I hear about many informal get-togethers with llama and alpaca owners. Walks in the park, driving a llama through the neighborhood with a friend from Germany, birthday parties, and school visitations are just some of the fun things llama owners can do together. This is a great way to advertise what we do with our animals.

A special note for members who have an idea for an event and wish to have that event sponsored by RMLA: send a note requesting information to Jerry Dunn. RMLA will match funds for advertising your event up to \$250 plus will provide liability insurance. Once registered, keep track of your receipts and send them to Lougene Baird, your RMLA treasurer, immediately following your event. Write an article for the Journal and provide pictures.

If you would like to plan an event or just have suggestions for one, please contact Jerry Dunn at 303-277-1129.



Kent Douglass & Meg Cattell, DVM

7844 N. County Road 27 O-(970) 898-3156
Loveland, (Masonville), CO 80538 H-(970) 593-1632

Publications Committee Report: Volunteers at Work

Lougene Baird, Treasurer and Liaison to Publishing, Library, and Membership Committees

Membership Directory and Service Directory processes are very time-consuming and the details are not well understood. Here is the encapsulated version of the process:

Barbara and Bob Hance chair the RMLA Membership Committee. In late summer, they begin to revise and re-write the application forms for membership renewal and service directory ads. A reminder that your dues are due by December 31 is put in the fall Journal. The forms for renewing your membership and writing your service directory ad are sent by a first class mailing to each current member. The membership form is also available for your use at www.rmla.com.

When the renewal forms begin to arrive, Barb and Bob sort through all of the paperwork and enter the information contained in each application into a large spreadsheet. The forms are retained for future reference. During the second week in January the data is sorted by information to be published in the Membership Directory. A data disk is then forwarded to Jo Riley. Jo has been in charge of the layout and typesetting for the directories for the last several years. She has the talent to take all of the millions of pieces of information and put it together into a useable directory.

Thanks to a suggestion made by long-time member Chris Switzer, the Library list is included in the Membership Directory. This puts the list in an easy to find place for all members and is a faster way to use your library.

Bob and Barb also sort and put in order all of the ads for the Service Directory. They call a member when there is a question about an ad. Those organized ads are then passed on to Jo Riley for layout and design of the Service Directory.

All Internet ads are sent on to Bob Riley for inclusion in the RLMA Website at regular intervals. Bob does a fabulous job managing the RMLA Website. If you haven't been there, please check it out. It is a great place to visit.

By late in February, both directories are nearing completion and the entire Riley household takes time to proof and improve upon their work. When corrections are made, the copy for both directories is sent to the printer. It takes about two weeks to print the covers and interior pages and collate and staple both directories. By late March, the directories are delivered to the mail agent. There, they are placed into an envelope, labels applied, sorted by zip code, and delivered to the Bulk Mail office about 36 hours later. Bulk mail delivers the directories to your mailbox during the first week in April.


Here are some interesting facts about our process. We use enamel paper which looks expensive but isn't. The print shop warehouses tons of this paper and we get a terrific price. A mail agent saves time and money. The cost of the mail agent's labor is less than the cost to ship the product back to the Hances for processing. Time is a consideration as well.

From time of the revision of the forms in the late summer to the time you receive your copy of the information encompasses about six months of dedicated volunteer work.

Thanks to Barb and Bob Hance for their committee's work, to the Rileys for their talent and time given to RMLA, and to Chris Switzer for her great suggestion. And thanks also to the members for getting their membership renewal and service directory ad to the Hance's by December 31.

You will see your renewal notice in the mail this fall. Do your part by returning it early to the Membership Committee and let us all work together for super 2000 directories.

continued....



Breeding . Boarding . Sales

Ears to you!
Llama Ranch

Tom/Faye Tsakopoulos
14213 So. Spring Valley Rd. 303-660-5313
Larkspur, CO 80118

The RMLA Journal

Ron and Marie Hinds lives have become so busy that they no longer have time to do all of the work involved in putting together the Journal. Ron will keep responsibility for his favorite part of the process, typesetting and layout of the Journal. He has asked for help in advertising and copy. Here is how we worked the responsibilities out:

Advertising: Marilyn Arnold is now in charge of all advertising. Send all camera-ready ads to Marilyn Look for her information in the front of this issue. Please call her with any questions. If you do not have a camera-ready ad and/or need layout help, call Ron Hinds. For a small fee he will design and create a camera-ready ad for you.

To be published in the Journal, all ads must be sent to Marilyn.

Content: Teri Nilson Baird is now receiving all articles, notices, etc, for publication in the Journal. Please see her information at the front of this issue. She has planned out the next several issues of the Journal and will soon be contacting the membership for articles.

Thank you to Marilyn and Teri for stepping into these positions and to Ron and Marie for continuing to give your support to the Journal staff. Your volunteer time is greatly appreciated by the membership and we appreciate your sharing your talents to create one of the best association publications around.



1999 RMLA CONFERENCE & ANNUAL BUSINESS MEETING

OCTOBER 23 & 24, 1999

Judy Sealy, Grand Valley Llamas, Grand Junction, Colorado

“WELCOME TO GRAND JUNCTION, COLORADO” is the warm greeting you will receive from the Conference Committee and Colorado Western Slope llama folks when you attend the 1999 fun, educational, and social event of the year! Your hosts will be Rob and Jill Knuckles, Tall Tail Ranch; Janine Faussone, Loma Llamas; and Judy Sealy of Grand Valley Llamas.

Grand Junction has experienced a steady growth the past few years and provides an excellent location for hotels, restaurants and conference centers. Packing, shearing, cart driving, training, and general health care and maintenance demonstrations will be held at a near-by llama ranch or park. Your attendance at the conference will also provide you an opportunity to be present at our annual business meeting.

STAY & PLAY...if you can extend your visit. Grand Junction, Colorado is ‘A Landscape of Adventure’, the logo of the 1999 Official Visitors Guide. Our backyard is the Colorado National Monument and our front yard is the Grand Mesa (depending on where you sit!). You can enjoy hiking trails, local wineries, biking, golf and a history that goes back to the dinosaurs! And, bring the kids along to participate in a RMLA youth program and to play at our Doo Zoo Children’s Museum, Dinosaur Valley Museum and the Museum of Western Colorado. For more information on the area, visit the Grand Junction web site at www.grand-junction.net.

Mark your calendar for October 23 and 24. We look forward to greeting old and meeting new friends. We are open to suggestions on lectures and demonstrations you would like included. We are also looking for eager volunteers to share our enthusiasm to make this a great conference!

For additional information, please give us a call:

Judy Sealy	(970) 241-7921
Rob & Jill Knuckles	(970) 241-4112
Janine Faussone	(970) 858-4440



Check out our catalog on the internet: www.ollie llamas.com



Dick and Linda Reichle

2765 Highway 91 N., Dillon, MT 59725

406-683-2228 or Fax: 406-683-2121

Call toll free 888-846-5262

email: ollie llamas@mcn.net

We are one of the largest manufacturers of llama pack equipment and tack for llama use. Call or write for catalog.

Our Ollie Llama Pack Saddle is one of the best on the market.

Ollie Llama Pack Saddle - \$240.00

Ollie Llama Panniers - \$200.0

Beginners Pack - \$165.00

Single Top Pack - \$50.00

Rain Fly - \$25.00

Ring Halters - \$9.50

Training Pack - \$65.00

Moss 19' Parawing - \$269.00

Heiniger shears - \$289.00

Nose mask - \$9.50

Neck Band - \$5.00

Bale Bag - \$65.00

Cooler System - \$80.00

Mesh feed bag - \$25.00

Cross Halters - \$12.50

Elastic Picket Line - \$12.00

Mesh Show Cover - \$35.00

Circuiteer II blower - \$288.00

Llama Blanket - \$60.00

Serrated Hoof shears - \$21.95

Baby Blanket - \$27.50

20% discount on purchase of 5 or more halters. You may combine an order of both ring and cross halters. We're now doing monogramming - your llama's name or ranch name - add \$4.00 to each halter. The monogramming also looks great on feed bags and bale bags - add \$10.00 each for these larger items.

Bear Resistant Panniers - \$98.00 each - a must for packing in bear country

We have a nice line of gift items, including tee shirts, books, videos, toys, cookie cutters, and our new line of "cooking llama" items, which includes aprons, a coffee mug, cookie jar, soup tureen, trivet, a teapot, and a serving tray, each sold separately. The design shows 4 comical llamas cooking up a storm. All ceramic items are microwave and dishwasher safe.

Also you might want to ask about our new cap - llama design stitched on a quality brushed bull denim cap. We also have 3 beautiful llama Christmas ornaments and 1 alpaca ornament. We're currently working on 2 new llama designs - not too soon to be thinking about Christmas!!! We have lots of grooming supplies, such as shampoos and brushes.

We're always finding new things to offer llama people. If you don't see what you need, give us a call - we may have it or be able to get it for you.

Committee Report: The RMLA Fiber Co-Op

By Sharon Beacham, Pheasant Hill Farm (303) 666-9437 and Karen Kinyon, Double K Diamond Llamas (970) 484-6241

What is the RMLA Fiber Co-Op Booth?

If you have been living in a cave for the last four years, you may not know what is happening with the Rocky Mountain Llama and Alpaca Association's Fiber Co-op Booth. RMLA sponsors this traveling booth to promote and market the fiber products of llamas and alpacas. The booth is staffed by volunteers who are also dedicated to this effort. It travels throughout the United States to various llama and alpaca shows as well as fiber-related events. Some of the destinations for 1999 include:

- The Snake River Fiber Fair in Idaho Falls, Idaho
- the Estes Park Wool Market in Estes Park, Colorado
- the Wyoming State Fair (at their first llama show) in Douglas, Wyoming
- Taos Wool Festival in Taos, New Mexico
- RMLA Fall Conference and the ALSA Grand National in Columbia, Missouri.

Other events may be added through the year.

Members of RMLA who work with llama and alpaca fiber provide items for sale in the Fiber Co-op Booth. These include hand spinner's roving, llama and alpaca yarn, and finished garments. These garments are handmade and may be woven, knitted, crocheted, felted, or machine knit in many natural and hand-dyed colors. There is an incredible variety and we are very fortunate to have many accomplished fiber artists in RMLA. There are also some stationery items, gift cards, and canvas llama bags available. Items are sold and a small commission is charged by RMLA with the rest going to the individual artist. All record keeping and accounting are done on a volunteer basis.

New consignors are always welcome and encouraged. Consignor Information packets are available that explain the guidelines for the RMLA Fiber Co-op Booth. These are available from Sharon Beacham at (303) 666-9437. If you or someone you know is a fiber artist, working with llama or alpaca fiber, please let them know that this wonderful marketing option is available. For additional information, please call Sharon Beacham or Karen Kinyon at the numbers listed above.

Handwoven Llama Awards Presented at National Western Stock Show

This year the Championship awards for the National Western Stock Show Llama competition were handwoven table runners. The millspun llama yarn was provided by the Rocky Mountain Llama Fiber Pool and three weavers worked very hard designing and creating fourteen table runners for the awards. Marie Hinds, Mary Hance and Karen Kinyon were the weavers for this project. A grateful thank you is extended to these weavers for their effort in making such beautiful awards for this event.

Marie Hinds lives in Elizabeth, Colorado and raises alpacas and llamas with her husband Ron. She works full-time but was dedicated to this handweaving project.

Mary Hance, from Wheat Ridge, Colorado is a fiber artist that works with llama and alpaca fiber. She spins, hand-dyes, and weaves while keeping up with her six year-old son, A. J. Not a small feat all by itself!

Karen Kinyon has a small hand spinner's herd of ten llamas and spins, knits, weaves, felts, and crochets with llama fiber. She lives in Fort Collins, Colorado with her husband and 16 year-old son.

Many thanks are extended to Jerry Dunn of Bear Track Farm for supporting and encouraging this project. This is the second year that handwoven llama items were awarded at the National Western Stock Show. If you would like to help weave for future award projects, please call Karen at the number listed above.

We Need Your Help, Too!

Many hands make light work, and that is just what is needed to keep the RMLA Fiber Co-op Booth on the road! We begin our fourth season this year promoting and marketing llama and alpaca fiber and could use some additional helpers. What does one get for helping with the RMLA Fiber Co-op Booth? Here are just a few of the benefits:

- Talking all day about the joys of llamas and alpacas
- Meeting a great variety of people interested in llamas and alpacas
- Touching many soft and wonderful garments made from llama and alpaca
- Unloading boxes of warm, soft yarn and roving
- Stocking shelves and arranging displays
- Driving either short or long distances to enjoy adventures
- Seeing new places, new faces
- Enjoying new llama and alpaca show destinations
- Discovering new Fiber Events
- Demonstrating your skill in knitting, weaving, carding, spinning, etc.

ROCKY MOUNTAIN LAMA FIBER POOL

NEW - FLEECE EVALUATION SERVICE

Send us a sample of your llama's fiber. We'll give you a written evaluation of its quality and best possible use.

Send 1 ounce of intact locks shorn from the blanket area.

Do not remove any guard hairs or wash.

Include a photo of the llama, its name, age, date of shearing, and interval since previous shearing.

Please include \$5 for each sample.

ALSA Certified Llama Fiber Judges:

Karen Kinyon
2933 E. Mulberry
Fort Collins, CO 80524
970-484-6241



Sharon Beacham
2380 - 95th Street
Boulder, CO 80301
303-666-9437

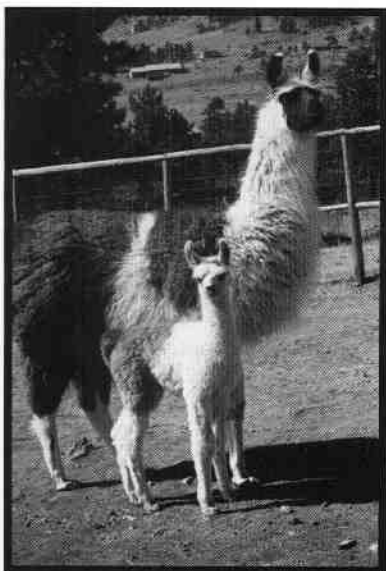
In case none of the above interest you, help is always needed in the record keeping and accounting department. There is a job for everyone, so if you find yourself with time on your hands and want a new and exciting change, call Sharon or Karen and they will help you find a new and rewarding challenge as a volunteer in the RMLA Fiber Co-op booth!



OVERLAND TRAIL LLAMAS

Opportunity knocks.....

Add a ***Star*** to your breeding program!



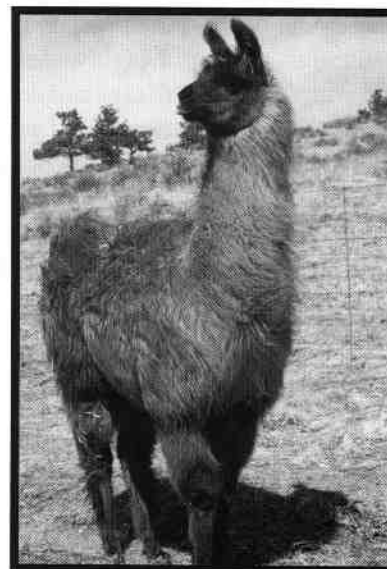
<Metallica
9/6/95
MC Hammer-
daughter

Brown Sugar>
2/9/98
HBL Gulliver-
daughter
Ready to Breed!

<HBL Gulliver Son
3/24/99
Champion-to-Be

Come visit!
970.493.2335

Mike and Dale Pettigrew
168 Emerald Mountain Court
Livermore, Colorado 80536



Many more llamas available—Call for Sale List and Photos

Youth and 4-H Corner

Grace C. Gerber, Larkspur Funny Farm, 303-814-0047

What does a 4H'er do with their Saturday? If you are a member of the Douglas County Llofty Llama Club you will be found at the Fairgrounds participating in the County "Discovery Day".

You might ask yourself "What is Discovery Day?" It is a fun-filled day of exploration into the world of 4H. For the first year, our club was asked to come and bring all of the wonderful projects in which we participated during the year. That meant dedicated parents and young adults loading up the trailer with llamas, alpacas, goats, sheep, chickens, spinning, and weaving. We spent three hours meeting new faces, answering questions, demonstrating our fiber art skills and above all having a great time sharing our love of 4H.

At the end of the day, I was beaming. Our club is lucky to have some of the nicest, most excited, and highly-informed groups of kids. They really shone that day and we had nothing but positive responses to our animals and projects. Although some of the kids were a little bit shy at first, they soon could not wait to have the next person come up and ask questions. Everyone, including the animals, love the attention and a great day was had by all.

After talking with several parents from different counties, I found out that not everyone has this special day of exploration. I would highly recommend that you talk with your local 4H officers and see what you need to do to bring this to your county. If you are not sure, please contact me and I would love to help you with the organization of this program. It is also a very relaxed way of making the public aware that llamas and alpacas are used in 4H projects; even if you do not own one, many clubs out there are willing to work with people and use their animals to complete a project. We also teach kids how to use the animals' fiber for many of the heritage arts projects. This day is truly a win-win program; and who knows, your kids may want to take woodworking or a goat project next year. This is what 4H is all about—sharing information and passion for your project.

Now, what do you do with your Sunday? A day of rest and working on this year's 4H project, of course!

Youth Judging Clinics

If Youth Judging is of interest to you, classes are being offered at three RMLA-sponsored shows this summer: Estes Park, the Summer Classic, and the Big Horn Rendezvous. All three shows are qualifiers for the Rocky Mountain Regionals. See the Schedule of Events on page 7 for more information.

Ron Baird, ALSA Judge, will teach another youth judging class at the RMLA Fall Conference in Grand Junction. Make sure your parents plan to be at the conference, and sign up for the Youth Judging Clinic. You must first be a member of the ALSA Youth Judging Program. Call the ALSA office at 303-823-0659 for more information.



SWITZER LAND FARM

alpacas

books

hats

jackets

llamas

scarves

shawls

sweaters

wool

yarn

MAIL
ORDERS
WELCOME

COME VISIT
THE FARM
& STUDIO

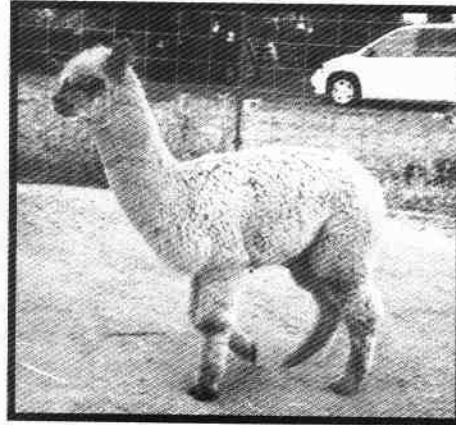
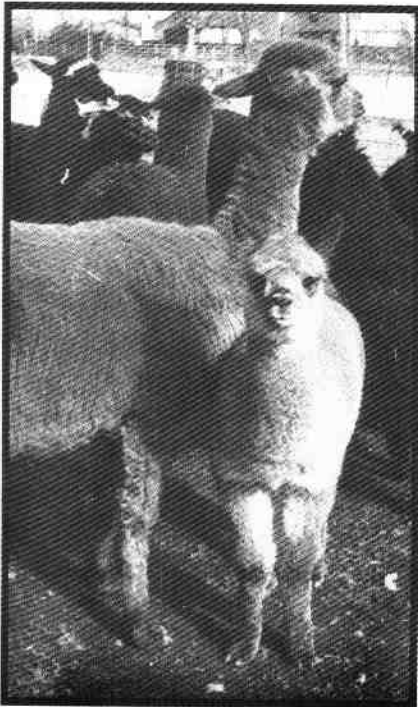
Special equipment and tools
for carding, spinning and weaving

Chris Switzer • Box 3800 • Estes Park, CO 80517
(970)586-4624 • FAX (970)577-0775



ALPACAS
FIBER
LLAMAS

Llamas and Bolivian, Chilean, Peruvian; Huacaya and Suri Alpacas



Breeders since 1989

11818 West 52nd Avenue

Wheat Ridge, CO 80033-2032

303-422-4681 Fax 303-422-3568

Owners: Robert & Barbara Hance

hancelama@att.net

WEB: <http://home.att.net/~hancelama/>

Fiber Artist: Mary Hance

303-467-3261 mhance@juno.com


HANCE
RANCHA

Farm Fashions: Comfort, Design, and Fun

Jerry Dunn, Bear Track Farm, Golden, Colorado

Many of us have taken the opportunity to thumb through the slick pages of catalogues and make a wish list for the clothes we would like to add to our wardrobe. Pages are dog-eared in the L.L. Bean catalogue and Lands' End provides colorful post-ems for us in their Christmas catalogue. A suggestion has been made that we provide a catalogue with a clothing collection specially selected for the camelid farmer. Below is a sample of our late winter collection.

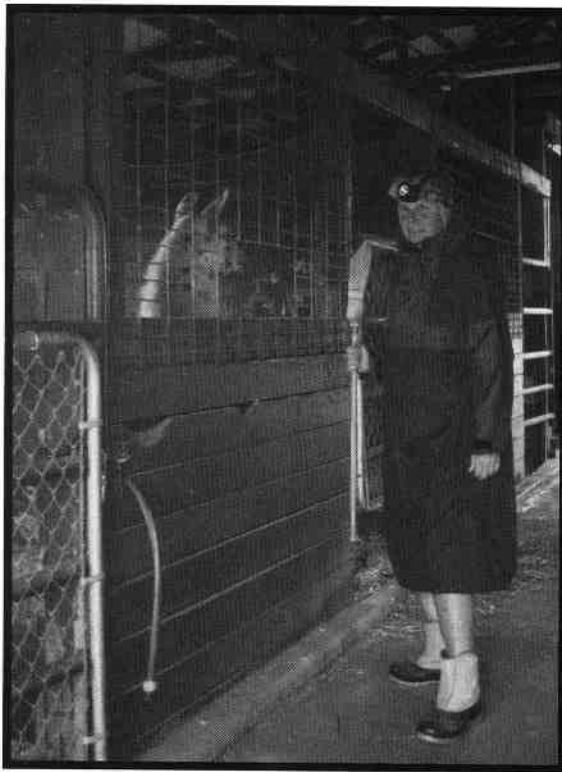
We are looking forward to our summer/fall collection. Please send your photos and descriptions to Jerry Dunn, 14550 W. 50th Avenue, Golden, Colorado 80403



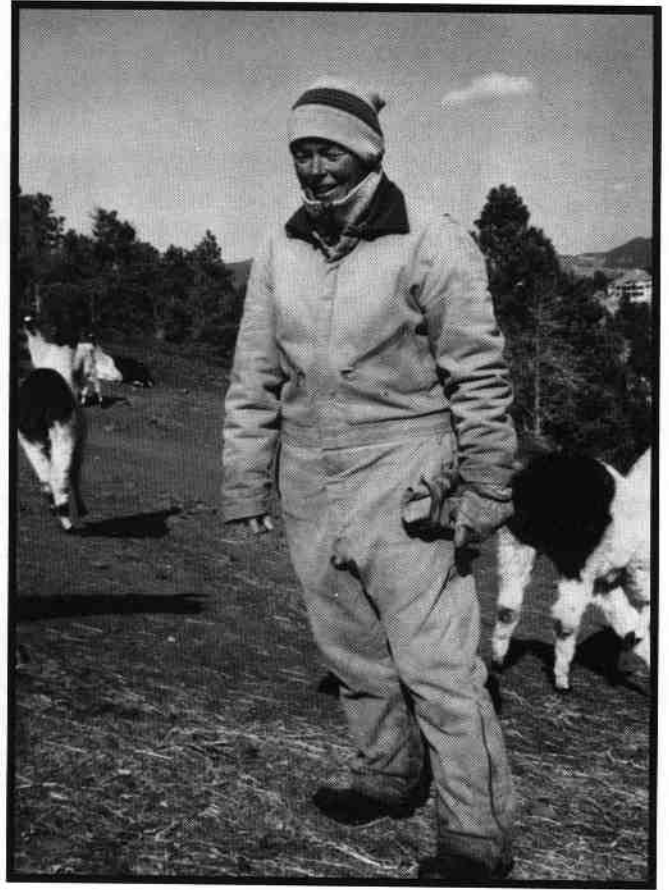
Bob Hance in his polyester Walls coveralls contrasted by Barb's nylon polyester-filled farm coat and her Michael Jordan sweats and slip-on insulated snow boots.



Katy Wegner showing her weekday early morning feeding attire. Note the 60/40 jacket that carefully covers her business dress and the Lands End slip on boots to protect her tights



Jerry Dunn in her "who goes there?" night stalker attire. Armed with a broom for protection! Lined slip-on boots, with a water repellent nylon cagoul covering the "jammies", accented by the Paul Petzl head lamp.



Mary Mauz outfitted in her cotton duct Walls coveralls, nylon pile vest, and her well worn wool hat. Notice the oversizing so that she may add additional layers as the weather dictates.



Jerry Dunn with a canvas hay apron (circa 1940's from Ken Green) over her bib overalls and flannel shirt. Note the bandanna head gear which can be removed and used to wipe away remains of llama spit or to just blow her nose on cold winter mornings.



Doris & John Beck
 26370 Road N
 P.O. Box 1600
 Cortez, Colorado 81321

(970) 565-6057

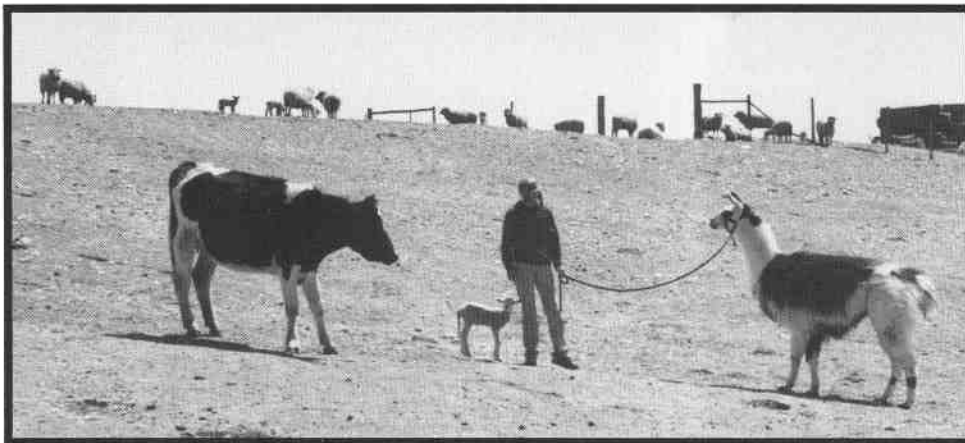
Ringo Gets a *Real Job*

Jerry Dunn, Bear Track Farms, Golden, Colorado

From the moment Ringo the llama arrived on the farm, he had different ideas about his purpose: I never could get him seriously interested in being a packer or working with the kids. Perhaps he just wanted to be a rock star. What he was serious about was eating and chasing strange dogs that would sneak into the pasture. Once he chased a coyote through a field fence; he was aggressive and relentless. How that coyote squished through that tiny space, I'll never know.

One evening a lady called me from Bosler, Wyoming, looking for a guard llama because her's had died the winter before. She and her husband worked a ranch that had been in the family for several generations. They had cattle, horses, exotic birds, and sheep. Lambing season was in full swing and their orphan lambs needed someone to watch over them and protect them. Could Ringo answer this calling and be a serious guard llama with no experience? It was worth a try.

The next day I wormed him, grabbed his health papers and registration, loaded him in the van and away we went, off to wide, windy, beautiful Wyoming. From the moment we arrived, Ringo's eyes lit up when he saw the lambs. He stepped out of the van and was greeted by an orphan lamb. He sniffed him all over and the bond was made. "Hello, this is Ringo, your new guard llama!"



Ringo meets his new family.

Ringo stayed calm. "Here is the water, that will be your pasture, and oh yes, this is Buttercup, you must meet with her approval if you plan to stay." The moment was tense; Buttercup gave him a stare, a sniff, and then her long sticky tongue emerged and gave Ringo's nose a big swipe. He could stay.

Meanwhile, the orphan lamb had not left Ringo's side. Every once in a while Ringo would turn and sniff the lamb. Leslie started to laugh, three more lambs ran up and began to "baa" at the new caretaker. Ringo seemed to be enjoying himself and was displaying a lot of interest in his new-found passion in life. He checked out each lamb carefully and seemed to make a mental note of each one.

Leslie seemed pleased and decided to go in the house and get her checkbook. Wayne was still talking to Ringo as Leslie started into the house with the first lamb following, when Ringo went ballistic, pulling on his lead rope with Wayne on the other end. Ringo let out a shrill cry of panic; his lamb had disappeared. Wayne encouraged Leslie to hurry before he lost control of the llama. Quickly Leslie and the lamb returned from the house. Ringo gave a hum of recognition, sniffed the lamb and all was well.

Cache La Poudre



Insure Your Lamas' Health for Pennies per Day

Cache La Poudre Minerals are free choice supplements formulated specifically to balance your llamas' diet.

Includes these essential elements:

MINERALS

Call Now to Order
or receive a brochure

800-758-0825

970-493-2335

- ★ *Selenium*—recommended amount for selenium deficient areas
- ★ *Vitamin D3*—necessary for bone growth and tooth structure
- ★ *Zinc*—for immune function and healthy skin and fiber
- ★ *Vitamin E*—for selenium absorption, fights stress and disease

ECONOMICAL! Costs less to feed per day than other free choice minerals or pellets with comparable guaranteed analysis.

Supplement #1:

Diet: Late or non-irrigated summer, fall or winter pastures; feeding grass hay. Contains a 2:1 calcium/phosphorus ratio and additional Vitamin E.

25 lbs, \$29 50 lbs, \$55

Supplement #2:

Diet: Late or non-irrigated summer, fall, or winter pastures; feeding alfalfa or a grass hay low in phosphorus. Contains additional phosphorus and Vitamin E.

25 lbs, \$29 50 lbs, \$55

Supplement #3:

Diet: Spring or irrigated pastures; feeding alfalfa or a grass hay low in phosphorus. Contains additional phosphorus and recommended basic level of Vitamin E.

25 lbs, \$24 50 lbs, \$45

NEW 200 lb. PRICE: #1 or #2: \$198, #3: \$162 • PLUS SHIPPING

Ringo... *Cont.*

I stayed at the ranch for a couple of hours to watch the interactions with Ringo and his new owners. I gave the Smiths some additional information about llamas and encouraged them to call me if they had any questions or concerns about Ringo. They seemed to be very knowledgeable about animals and loved Ringo. He was hired. Ringo had a real job?

I called the Smiths a couple of weeks later to see how Ringo was working out. Leslie said he was doing great except for one problem, he appeared to have a problem with prejudice against black lambs. He kept chasing them out of the pasture. She solved the problem by taking him into the barn where they were lambing and had him observe the birth of a black lamb. Ringo sniffed the newborn lamb and it was his to care for. No more problems.

How do llamas know what to do when it comes to being a shepherd? The process is beautiful and fun to watch. Ringo, at last report, is still employed with the Smiths.

If you have a story to share about your guard llamas, let us know. If you would like more information about using llamas as guard animals, please contact Bob and Barbara Hance at 303-422-4681.



ROSEBUD LLAMAS UTAH



Walsh & Weathers, Inc.

**Shirley Weathers
and Bill Walsh**

P.O. Box 270090
Fruitland, UT 84027-0090
www.ubtanet.com/~wrv/rblu.htm

Phone (435) 548-2630
FAX (435) 548-2438
wrv@ubtanet.com

PACK TRIPS, DAY HIKES, BOARDING

Breed your best to the best

Breeding services and offspring are available from these outstanding males at Pheasant Hill Farm

PHF Solomon's Seal (aka Burrito - King Solomon x PHF April)

Burrito is the foundation of Pheasant Hill Farm's breeding program. Now 12 years old, his pasterns and back are still straight and strong. He provides all his offspring with "bomb-proof" dispositions and fine, dense fiber. The majority are also appaloosas. Several have won Grand and Reserve Grand Championships in halter and performance. Fee: \$500, with one free rebreeding if cria is a male.



Peruvian Picacho (1993 Peruvian Import)

Pheasant Hill Farm is now full owner of this well-proven herd sire. He has heavy bone, perfect balance, a gentle disposition, and beautiful single-coated dark red fiber. All of his crias are an improvement over their dams. They place well in halter and performance classes. Fee: \$1,000*



Cadfael (*El Fuerte x *Cantilena)

Cadfael is Pheasant Hill Farm's junior Peruvian herdsire, purchased from Kay Sharpnack. Like his famous sire, he's producing crias with correct conformation, elegance and presence. He placed 3rd out of 30 adult heavy wool males at the ALSA Grand National and won Grand Champion Heavy Wool Male at the 1999 National Western Stock Show. Fee: \$1,000*



Indian Peaks Camacho Chief (*Macho Camacho x Snow Queen II)

"Chief" has been the foundation and success of Indian Peaks' breeding program since he came to us as a weanling from Patterson Llamas in 1989. Let Chief do for your breeding program and promotion what he has done for Indian Peaks. A truly successful stud with size, presence, heavy wool and show winning offspring. Fee: \$1,000



**Indian
Peaks
Llamas**

Alaine Byers
303-459-3245



**Pheasant
Hill Farm
Llamas**

John and
Sharon
Beacham
1-800-465-2567
or 666-9437
(Denver area)

Live birth guarantees

* One free rebreeding if cria is not a female or stud-quality male.

Purchase a female, priced at \$2,500 or more,
and receive free breedings to any of our sires as long as you own her.

Caring for Llamas and Alpacas: A 10th Anniversary Look Back

Dan Schreiner, Silver Sage Llamas, Casper, Wyoming

I wish now that I had kept a diary of my experiences the year I served as RMLA President. My mind has apparently mildewed over the last 10 years, as I find it difficult to recall all the events and their correct sequence and to give the proper people credit for their involvement with the Caring for Llamas and Alpacas book.

We had a RMLA Board meeting, during the National Western Stock Show, at the Day's Inn Motel in Northglenn that year, 1988 as I recall. It was at this Board meeting that Mary Mauz threw out the idea of RMLA publishing a basic llama care book written by Dr. Clare Hoffman and illustrated by Ingrid Asmus. Everyone left excited, but with dozens of questions swimming through their minds. The biggest question, as I recall was, "would it sell?" Or more realistically, "how many books could we sell?"

My telephone calls to fellow llama enthusiasts on the probability of the book's success were met with outstanding enthusiasm, and I was excited about the project. Next I called a prominent llama magazine publisher for advice and my enthusiasm was quickly doused. He had considered publishing a packing book himself and simply felt there was not enough market for any llama book! After a few hours' consideration I threw off that suggestion as one man's opinion, but that warning would haunt me for the next year. I think it caused us to be extremely conservative in our planning.

The next order of business was to raise \$10,000 with no guarantee of success and only books for collateral. I don't recall that we considered a bank loan, but looking back now, it would have been worth a chuckle. A few quick calls to llama friends, promising nothing more than a free book and their name in print, brought loans of \$500 from 19 of them and free legal counsel from another. Those folks are still listed in the current printing under Publisher's Acknowledgments and four were Board members. They believed in llamas, the RMLA Board, and the need

to publish such a comprehensive veterinary care book.

Mary Mauz and Dale Pettigrew, who worked for a publisher, went searching for printing bids. Wow, what a job. The prices were all over the board with dozens of variables including typesetting, paper, bindings, freight, and on, and on, and on. Judy Brock volunteered to put it on disk, and that was a big breakthrough. Meanwhile Mary Mauz had a friend proof-reading the draft. We settled on ring bindings to make the text easily accessible in the barn but at the risk that libraries wouldn't readily accept it.

Our concern as a publishing committee was that because of the nature of the text, everything must be done accurately. We poured over the book text, bombarding Clare with picky little things like which was the proper first cut in the toenail trimming procedure, and how did she know that llamas drank four gallons of water a day? I know that mine only drink one gallon. We went one step further and arranged for knowledgeable llama people to do the editing on a volunteer and independent basis, but not without some difficulties. I had to strong-arm one "volunteer" to dedicate the time to the project, and another quit in disagreement of the total project, but Dr. Clare handled the situation well and shrugged off the criticism. I've always regretted that the pressure from me, which was so important to both RMLA and the CFL book, cost me a friend in the business. We were adamant about having the information screened by as many knowledgeable people as possible.

The publishing committee members became very good friends and spent many hours on the telephone. E-mail would have been a godsend for that project. I laughed out loud tonight as I recalled a phone conversation with Dale Pettigrew when she was editing my rough draft of the Publisher's Acknowledgments. I'm sure she corrected the spelling on at least every third word and changed every fourth word. I knew she worked with a publishing

Continued on page following...

BURNING MOUNTAIN LLAMAS

Pretty faces . . .



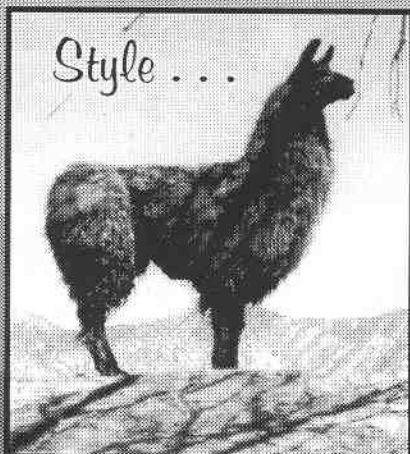
**BML
FROSTY**
Male
May 28, '98



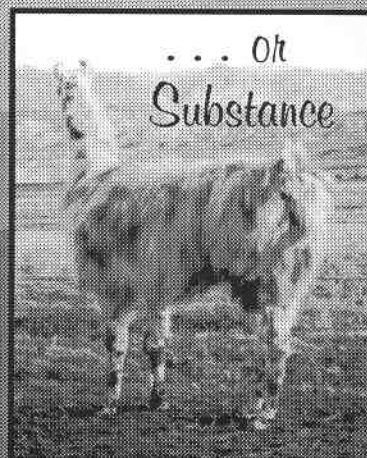
**BML
INDIELLO**
Male
July 7, '98



**BML
REVELEY**
Male
May 25, '98



**BML
WIDESPREAD PANIC**
Male



MCCULLY'S PECOSO
Male

Females of various ages are available as well. Of a herd of close to 50 animals, there's something here for most everyone and you won't have to mortgage the house. If you're looking for something specific or just looking, please call and arrange a visit to Colorado's beautiful Western Slope. Visitors are always welcome.

LEN HENNIG

0187 ROAD 251 • RIFLE, COLORADO 81650

PHONE (970) 625-3611 • Email: lhennig9@hotmail.com

Caring for llamas and alpacas.... cont

firm but hadn't a clue she was an English major. (I learned in a hurry!)

Then there were all of the legal ramifications of the book and the contracts. These concerns were quickly put to rest by my high school friend—turned attorney in and for my hometown of Berthoud, Colorado, Bruce Fickle. The "Preface" of the book is primarily his work. Read it next time you open the CFL book. My favorite passage is that we (RMLA) are "not warranting or recommending any procedures or products described in this text." It must have worked, because I don't recall RMLA being sued.

If my memory serves me right we were able to pre-sell some of the first edition of the books and after a spring publication date we had the loans repaid shortly thereafter. When we discuss the first publication of the Caring for Llamas book I always say that I learned one thing—never publish by committee, unless they are your llama buddies. The authors and the publishing committee were all wonderful to work with.

On this, the 10th anniversary of our first printing of Caring for Llamas and Alpacas, A Health and Management Guide, I feel it is only fitting to reflect on the impact the book has enjoyed. We stated in the Publisher's Acknowledgments that "we hope it will be a useful contribution to the entire llama and alpaca community." Thanks to the Author's updates and the many RMLA members' work on republishing tasks, the book has far surpassed any of our expectations. It is simply the most important lay book on llama care available. The success of the book is not only the result of the authors' hard work and a great product in itself; but it is also a direct result of the marketing efforts of the many RMLA members who have worked with new zeal each year for the past ten years, doing what we do best: giving our best for llamas and alpacas.

Note: Over the decade since the first printing of Caring for Llamas and Alpacas, over 17,000 copies have been printed and monthly orders for the book number in the hundreds. Many thanks to the Board for making the decision to go forward with this project; the numbers speak for the success of this project.

Caring for Llamas and Alpacas

A world renowned RMLA publication. Orders shipped around the planet... (and elsewhere!)

To Order:

<http://www.Amazon.com>

or

Send your name, address, city, state and zip and

\$23.95 plus \$4.00 S & H

(CO residents add 3% sales tax) to:

Keith & Katy Wegner

RMLA Bookstore

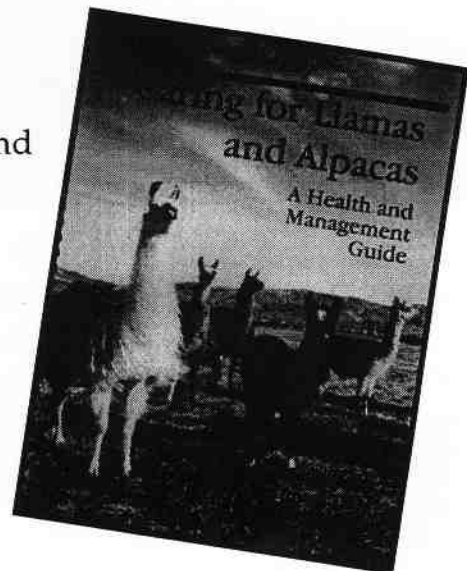
17190 W. 57th Place

Golden, CO 80403-1113

(303)273-9445

e-mail: k2wegne@ibm.net

ISBN:0-9622768-2-0



"PATIÑO'S PRIDE"

For the Focused Breeding Program



We are thrilled to introduce our statuesque herd sire to the Rocky Mountain Region. Selected from Ron and Maggie Schuler's herd at Bauernheim's Llamas, Patiño's Pride exemplifies a rich tradition of strong pedigree, fine lustrous fiber, with correct conformation and the traditional llama silhouette. Standing 45" at the withers and still growing!

Pride's pedigree reads like a who's/who of strong, genetically proven domestic lines, that generation after generation have improved on the traits we are looking for: Overall balance, eye appeal, presence and style.

"PATIÑO'S PRIDE"

DOB 3-23-96 ILR #R163250
Patiño Bauernheim's Niña
Sundance x Carma Aladdin x Naima



Rose Mary Zeschin
Hillcrest Llama Ranch
12680 W.C.R. 28
Platteville, CO 80651
970-785-2398



\$800.

INTRODUCTORY BREEDING FEE
UNTIL MAY '99

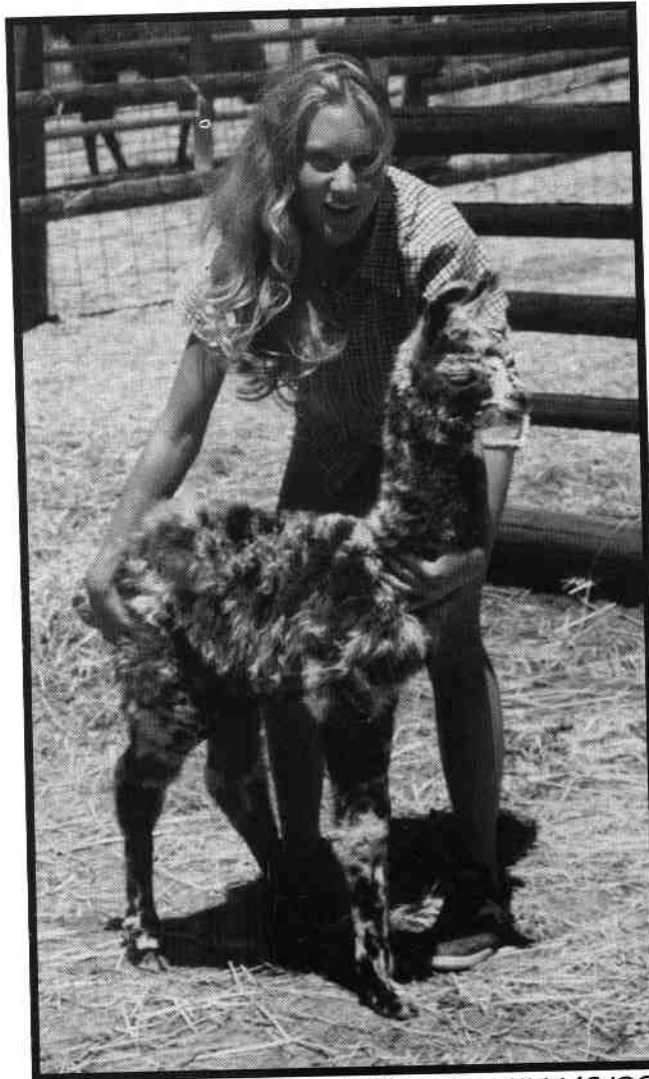


Alaine Byers
Indian Peaks Llamas
PO BOX 202
Ward, CO 80481
303-459-3245

Hooked on Llamas: The Kauffman's Story

Willow Kauffman, Dusty Britches Ranch, Castle Rock, Colorado

Like many girls, it was my childhood dream to own a horse. I went trail riding a couple of times growing up and became smitten with horses. From then on, I spent many years begging for a horse of my very own.



Gretchen and new cria, DBR's Calico Kidd (8/98)

On the other hand, my husband David got it into his head that he would someday like to own llamas. (By age 40, he said). He had become interested in South American culture while working in a Hispanic neighborhood with Denver's indigent health care program. "What a silly notion," I thought. But over the years, we supported his fantasy by giving him stuffed llamas, llama bells, Llama magazines, llama ornaments, llama wall hangings, and even a llama hike by an outfitter for Fathers' Day.

The years rolled by and we moved to the country. Even before a barn was erected, I went and got that horse. We brought that mare home and a week later, I wondered why I spent a lifetime wanting a horse. They were expensive, unpredictable, made a lot of poop, and I was scared of them!

Soon after, we realized David was going to be 40 years old. How could we make this a milestone celebration? With a surprise party! And better yet, let's find him a couple of llamas!

The kids and I went back to Great Divide Llamas where we had taken the hike. After owning a sour-tempered mare, I told Stan Ebel that we wanted mellow animals. He selected ten for us to choose

from. After a hike, we picked two geldings named Blanco Bart and Barbarosa.

The party was a total surprise to David and all his friends came. His buddies told him to cover his eyes as Stan drove up with the llamas. They whispered that the stripper was here. (If you know David, you know *that* made him squirm!) He opened his eyes and said absolutely nothing. We had to ask him if he liked them! (Later, he confessed that he didn't understand they were his—he thought we rented them for the day.)

They were David's hiking llamas but the whole family loved them. We had more time to work with them and a 4H club started in our county (Llofty LLamas). Marie Hinds organized the club and Ron

Baird became a leader when his granddaughter, Deidre, joined. Ron taught all the kids how to show the animals and they started winning ribbons!



Getting 'speckles ready for the NWSS (1/97)

The honeymoon never ended with these animals. The three horses we eventually owned were sold after the kids lost interest and one of my children suffered a concussion from falling off. Unlike the horses, we never felt afraid of the llamas; they were healthy and easy to maintain, they pooped in one place, and we learned they are intelligent animals and train quickly. My kids could handle them and it became our family hobby to do together.

Like Potato Chips, you can't stop after having just one. We heard that some females were available for a reasonable cost and purchased a maiden and two which were preg-

nant. Two weeks later, we had a surprise when a cria arrived early. We named him Holy Moses because when we came home from grocery shopping, David ran up me, saying, "Holy Moses, she had her baby while we were gone!" And that is how most of our crias have arrived. Out of seven, we have only seen two, even though we watch intently. There has never been a problem, thankfully, and their births have been the highlight of our years. Our whole family gets involved in naming them and training them. We finally decided to make our hobby a business. Our ranch name is Dusty Britches Ranch after



Bart and Bespeckled peeking out of the barn on a snowy



Bespeckled checking himself out in the mirror... Walking the llamas through the house makes for great PR practice.

a series of books we used to read our children by Ralph Moody called Little Britches.

We now are breeding llamas and have five females and two studs. At the present time, 14 animals



(L to R) Willow, Heidi, David, Levi, and Gretchen Kauffman. Taken at the ALSA Nationals, Columbia, MO (11/98)

are in our herd (1999). It has brought our family close together as we share in the chores, activities, and shows. We think the price is very affordable; they are safe, healthy animals, and a whole lot of fun to own. Our goal is to share this experience with other families and help them discover the joy of owning llamas, too.



Bon & Cindy Burgess
7120 County Rd. 7300
Lubbock, Texas 79424

(806) 798-8310
Fax (806) 798-8002
e mail: fff@HUB.ofthe.NET

Gentle Day Farm

JIM AND MARLA MILES
688-4351

5273 East Highway 86
Franktown, Colorado 80116



"Have a gentle day."



Jan Redenbarger

303.642.0140

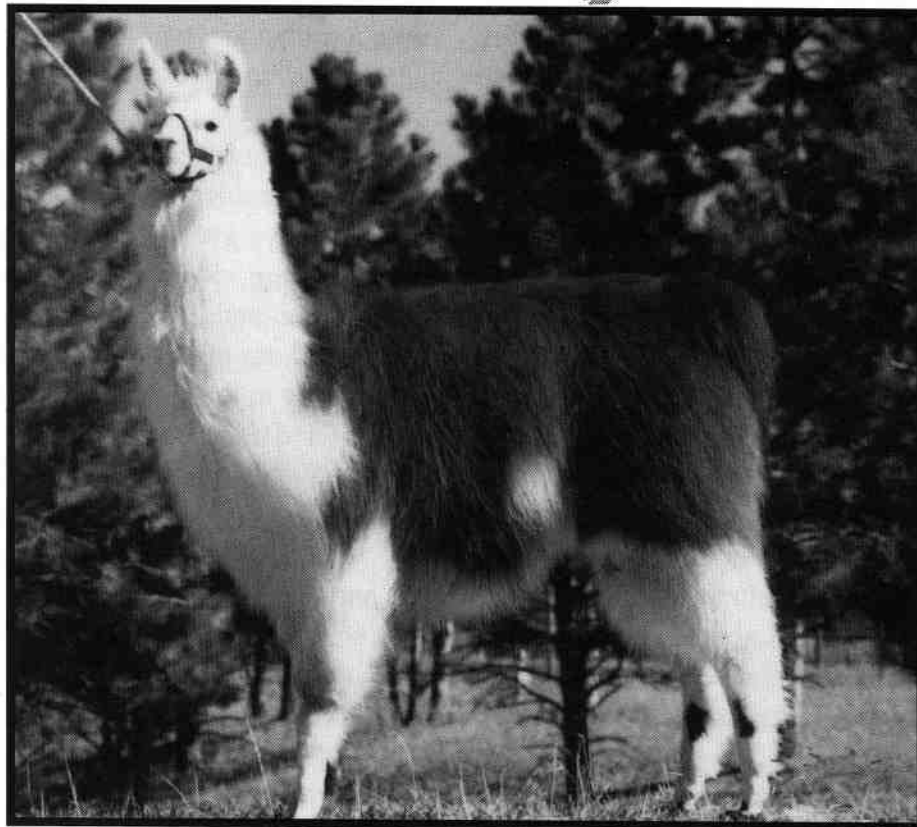
Winding Trails Llamas
P.O. Box 7096
Crescent Branch
Golden, CO 80403

This and Much More

Halters	Carts	Heritage Fence
Scales	Harnesses	Wormers
Clippers	Ivomec	Vet Wrap
Brushes	Weathervanes	Record Forms
Blowers	Power Washer	Manure Spreaders
Grooming Aids	Clock	Minerals
Show Kits	Tie Straps	Probiotics
Lead Ropes	Packs	Scoops & Feeders
De-icers	Signs	Laboratory Service
Waterers	Cria Kit & Coats	Colostrum
Chutes	Dinner Bell	And More!
Kiwi's	Fly Control	

Useful Lama Items 800-635-5262

Get the Spirit



Remember me? I'm *Andean Spirit*...

★★★ ALSA Supreme Champion

★★ ALSA Grand Champion

★ ALSA Performance Champion

As well as Halter, Get of Sire, Obstacle and PR.

Exquisite fleece— Average 24.66 microns

★★★ I can add champions to your herd.

★★ Taking breeding reservations for 1999.

★ Make your year 2000 one to remember!

Live Birth Guarantee • Multiple breeding discount

My folks can take me to your ranch!

Shiloh Ranch

John McCullough, ALSA Judge

P.O. Box 1558

Ruidoso Downs, NM 88346

888-733-6468

Living With Llamas: Our Story

Deanna Lewellyn, FootHills Llamas, Littleton, Colorado

“How did you get in to llamas?”

If we had a dollar for every time someone asked us this question — we’d be close to rich. Probably the answers to the questions are the reasons we love to “hang-out” with these terrific animals. What do you do with them? Can you really pack with them? Are they hard to raise? Do they really spit? Are they worth any money? And the one we really love, especially right now - “THEY’RE PREGNANT FOR HOW LONG???” Sometimes TOO long, in our opinion!

The truth is, I blame my husband, Larry, who would then blame Jack Robertson, who would in turn blame Betty for getting them into the “Llama Thing” when Jack bought Betty a llama named Charlie at the Denver Zoo. Larry met Jack one afternoon in 1980, when he was on the way to work. Larry had heard a rumor there were llamas in the Marston Shores area of southwest Denver, so he went to take a look. And, as the song goes, “just one look, was all it took”, and Larry was hooked. He is a great outdoors man who loves animals and likes to hunt, fish, hike, almost all of the things that take him away from the grind of everyday city life. Llamas seemed to be the perfect match for his lifestyle and so he set-off to find some of his own. In 1983, Larry traveled to Dighton, Kansas, where he purchased his first two males from Earl Bosley. In 1987, he bought a handsome boy named Bandido from LuAnne Williams.

Larry & I were married on April 21st, in 1995, we think. (Don’t ask us, we would have to find the wedding invitation to check the year.) Larry came into the marriage with one son, and three llamas. I, on the other hand, entered the marriage with two sons, two dogs, two cats and a number of fish. Luckily, neither more children or animals presented a problem for either of us. Before the wedding, we bought our first llama, a boy, together, and soon af-

ter, we purchased two females from Betty. We also accepted a male to care for, as the owner would not respond to numerous requests for information on how to handle/manage/board the llama. That began our 18-month fight with a negligent owner who had abandoned the llama. Through working closely with ILR, and good documentation, we were finally granted ownership of this great guy.

Although more children and animals did not present any problems for us, NO LAND was a big problem if we ever wanted to spend any decent amount of time with our critters. We lived in Southwest Denver, and had only about 30 ft x 100 ft of land behind our house. We were blessed to have a friend living in the Indian Hills area, and he generously offered the use of his pasture for as long as we needed. We still continue to keep 3 - 4 male llamas on his property (depending on the time of year), and our friend truly enjoys the entertainment they provide him. Larry started a great quest to find a home in the southwest area that also afforded us some land which was zoned appropriately. After about 4 months, we found a small home (Larry still promises to build an addition), on just under an acre of agricultural property. All this, and we only had to move 1.8 miles. PERFECT.

So, we now had a new (old), small house, 6 llamas, and within one year, two babies on the way. Larry loves to tell the story of how, in anticipation of our first cria and determined the mother was close to delivery, I would crawl on my belly, around the backyard, equipped with a flashlight and stopwatch, to time contractions. However, one can only do this for about three months to realize they have absolutely no idea when the blessed event was really going to happen. I would like to say my nervousness in anticipation of a cria’s birth has been quelled some, but regrettably, I cannot do so. Just last night, I was outside until about 9:30 PM with a flashlight, sure our first baby girl was going to have *her* first baby. Suffice it to say, today she passed her 347th day, and my anxiety grows & grows. Since buying our first two females from Betty, we have had four

healthy crias and three more are on the way this spring & summer. With God's continued blessing, all will go well with these births also. Although I look a little goofy to the neighbors, and quite a few friends laugh at my stories, I do not foresee shedding the strange behavior that overtakes me when awaiting the birth of a cria. We have also been fortunate enough to have seen the before, during, and after stages of a cria's birth. Exciting, miraculous & unforgettable!!! Along with having our own crias, we have also purchased two absolutely terrific males, one from Jerry Lee and the second, a true performer, from John & Sharon Beacham. It didn't take long for these two boys to become "one of the family", as their easy personalities allowed them to schmooze up to the others quickly.

So far, we have enjoyed using the llamas to hunt & hike, give rides to children at elementary schools, and at close friend's children's birthday parties. We

also participated in the St. Patrick's Day parade in 1998, and found that a fun experience. Most of all, we enjoy sitting out back and watching the llamas with their playful attitudes, silliness, pronging, and exceptional majesty. What a joy they have been for us.

We are beginning to really enjoy the llama shows. The more we learn, the more comfortable, relaxed, and better owners we have become. Larry and I especially appreciate the number of good friends and acquaintances we have met over the past four years. The support, encouragement, advice and camaraderie has been exceptional. We look forward to continuing our involvement with the llama community and hope that someday we can return the many favors we have received from others.

Footnote: Finally, on Sunday March 28, Larry and Deanna became proud owners (and parents) of Princess Tiger Lily.



KIOWA CREEK LLAMAS

- *Registered Breeding Stock
- *Llamas are Halter, Lead, Trailer Trained
- *Guard Llamas for your sheep and goats
- *Produce great fiber
- *Packing for hikers
- *Great for therapy
- *They make great pets

KIOWA CREEK LLAMAS
39420 Olson Ct., Kiowa, CO 80117
E-Mail: adamcyk@earthlink.net

Phone/Fax 303-621-2960

Come see us. 7 miles north of Kiowa on the Kiowa Bennett Road.



I'm Taffy

Stillwater Minerals

Since 1989

Vitamin & Mineral
Supplements



Specifically
Formulated
for
Llamas
and
Alpacas

Most Accepted Supplement

Stillwater Minerals is the first widely accepted quality vitamin and mineral supplement based on llama nutritional studies by Dr. LaRue Johnson at Colorado State University.

Many Improvements

We continue to consult with Dr. Johnson on formula adjustments. In the past 5 years, we have added special ingredients to help preserve freshness . . . resist clumping . . . plus, we added more vitamins and minerals to combat stress, aid digestion and encourage wool growth.

It Tastes Good Too!

Most important, we even made it taste better. As Dr. Johnson said, "The best endorsement I can give is that my llamas sure eat more Stillwater Minerals Supplement than they ate of my stuff."

The Finest Ingredients

The ingredients still include Zinpro 100® and Vitamin E, just like the original formula, plus 15 other custom ingredients. These additional ingredients add minerals and vitamins that are not found in any other Llama or Alpaca supplement.

Four Custom Formulas

Free delivery for Continental U.S. and packaged in reusable plastic buckets

Original Formula Lama-Min 101

Contains Vitamins A, D³, E and Minerals Calcium, Phosphorus, Potassium, Iron, Manganese, Cobalt, Iodine, Selenium and Zinc (Zinpro 100). All balanced for llamas and alpacas.
25 lbs: \$39.50 50 lbs: \$67.50

Premium Lama-Min 103

Same as 102 plus DL-Methionine and B-PlexFive for wool quality and growth. This formula has added Copper for feeding programs known to be deficient in Copper.
10 lbs: \$24.95 25 lbs: \$49.50 50 lbs: \$83.50

Stress Formula Lama-Min 102

Same ingredients as 101 plus higher levels of all Vitamins and Selenium. Contains Electrolytes to promote water intake - ideal for summer use or other high stress situations.
10 lbs: \$22.95 25 lbs: \$45.50 50 lbs: \$77.50

Premium Lama-Min 104

Same as 102 but with Calcium and Phosphorus balanced for alfalfa, plus the highest levels of Vitamins D³, and E. Contains DL-Methionine and B-PlexFive for wool quality and growth. Ideal for winter use or diet supplemented with grain.
10 lbs: \$24.95 25 lbs: \$49.50 50 lbs: \$83.50

To Place Your Order or for More Information



Owned by fellow llama owners, Bob & Jo Riley
Post Office Box 1189, Lyons, CO 80540

800•255•0357

FAX: 800•648•2383 E-Mail: llama@orci.com



For more detailed information or to order on the Web — <http://www.llama.org/minerals>

Twins: Twice as Nice? Our Experience with Multiple Births

Barbara Hance, Hance Ranch, Wheat Ridge, Colorado

The birth of twins in the Camelid world always brings out the "oohs" and "aahs", with lots of questions: Do they look alike? Is there a history of twins in either the dam or sire? Are they boys or girls, or one of each?

I know of one llama that produced three sets of living twins; I do not know the sexual make-up of them. I also am aware of one set of live twins born to an alpaca; this set included a male and a female. I read some time ago about twin alpacas born in New Zealand. And recently a message came down on the Internet about a llama twin birth.

In Murray Fowler's, DVM, books and in the Veterinary Clinic of North America books, twins are almost never mentioned. Calle-Escobar said if nutrition were improved we might see more twinning. Would this be good or bad? His meaning is unclear, but cattle and sheep twins usually mean more money for the owner.

I was able to find a study done by Dr. Fowler and published in the October 1990 "Llamas" magazine. It is most informative in the way twinning happens and the technical aspect of how and why some female twins are infertile. All of the cases studied were llamas at full term. He identified 16 pair born between September 1981 and November 1989. Seven of the cria died before they reached 6 months of age. The comments state that an additional three sets were aborted or dead at birth. One female produced three healthy sets; another female had two live sets and one aborted; a third

female produced two sets of which the male died at or shortly after birth; and a full sister of the third one also had the male die at birth. Different sires were used in most of these cases. Dr. Fowler suggests that twins should be avoided if possible. He advises us to be careful in selecting animals for purchase.

The Veterinary books indicate that abortions after 60 days occur in 2% to 17% of pregnancies, but cause is rarely identified. I wonder how many of the fetuses are even found to be studied at all. Or are the abortions usually in a field where coyotes, cats, crows, hawks, or other predators find an easy meal?

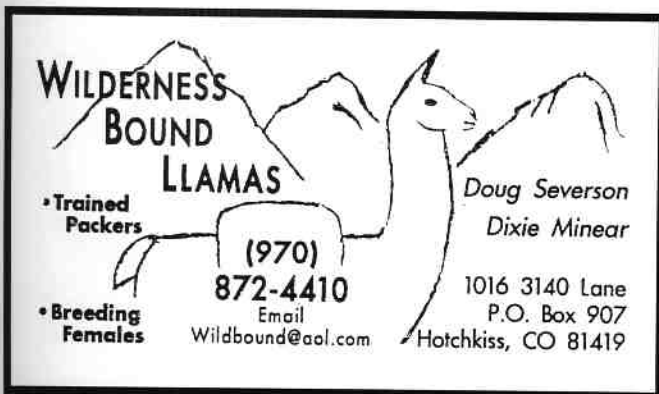
Our animals are mostly housed in paddocks, so maybe we find the abortions more often than others. (I do not feel one way of housing is better than another way, I am saying only that this is what we do.)

We, at Hance Ranch, have had over 50 live Alpaca births since 1990, one breech that did not survive, and one death shortly after birth. But on my twice daily "poop-patrol" I have found five fetal abortions, three of which were twins. The first were aborted at about 52 days and we could not determine the sex. The next set found was aborted at 277 days, and included a 4-pound female and a 2-pound male. The male of this set was almost mummified.

Today we found a set from a November breeding at 117 and/or 127 days gestation. My vet determined the smaller one to be a male, and the healthier (pink) was a female. Our aborted twin sets were all from different females.

In my opinion, these twins born on our farm were due to multiple breedings. We know that the 277-day abortion was from a female bred two times, two days apart. The 52-day set was from a girl bred every other day, about four times.

This latest set was from two breedings ten days apart. In all three cases, one twin had been dead for some time, the other one probably deceased during the abortion.



**WILDERNESS
BOUND
LLAMAS**

• Trained
Packers

• Breeding
Females

Doug Severson
Dixie Minear

(970)
872-4410

Email
Wildbound@aol.com

1016 3140 Lane
P.O. Box 907
Hotchkiss, CO 81419

From the first lecture we attended, we heard that "most successful pregnancies occur in the right horn." I question if this is why twins rarely go full term? Maybe nature doesn't like a pregnancy in each horn? Or maybe there is not enough room for both in the right horn?

At the Alpaca Owners & Breeders Assn. mid-winter conference in February 1999, we heard Norm Evans, DVM, equate lost breeding days to lost dollars in his lecture on proper nutrition. The bottom line on a livestock operation is making money! That is what we want the IRS to believe anyway. Considering the present price of alpacas, these twin abortions have cost us between \$6,000 and \$11,000 in lost revenue, based on an average price and the total of 446 days of breeding lost.


The RMLA Journal, May 1998, has an informative article about "Once Only Breeding" written by Dorane Strouse. From experience at the "Reproduction Clinic of Llamas of Michigan" with the assistance of Dr. Chris Herring and Dr. Walter Bravo, they determined the best way to breed was once only, with male checking or field testing four days later. Our records

showed that about 85% of our successful pregnancies were from once-only breeding, which we have done for almost two years. But the latest abortion shows we got into too big a hurry, re-breeding ten days later. It is possible that this lady would be receptive anytime, which happens, and waiting the other four days may not have made a difference.

Dr. Fowler states that all twins he has seen in llamas and alpacas are fraternal, from two ova and two sperm, and possibly due to multiple breedings. He cautions that in most cases twins require more care for both the crias and the dam, which could mean additional veterinary bills.

With twins causing some abortions in late gestation coupled with the loss of revenue and the possibility of infertile females, it does not seem that *twins are twice as nice!*

My suggestion would be to read the article in the May 1998 Journal, think about using this plan in your breeding program, and avoid the wasted dollars that twin abortions may be causing.

NORTHERN COLORADO LLAMAS
Darrell Newton
970-482-7697 970-484-7209
996 Deer Meadow Way Livermore, CO 80536

DOUBLE J LLAMAS

Julie K. Heggie
(307) 721-2919

P.O. Box 612 808 Huron
Laramie, WY 82073 Laramie, WY 82070




Earley's Llamas

Ted and Fay Earley
970/327-4511

P.O. Box 279
Redvale, CO 81431

Breeders of Quality Llamas & Great Pyrenees Guard Dogs



Donley & Dolores Gardner

Diamond Oaks Llamas

Route 1 Box 5B • Daingerfield, Texas 75638
903 • 645-2650 Fax: 903 • 645-3291

Building Trust

Deidre Baird, RMLA Youth Member Plum Valley Llamas, Sedalia,

Colorado e-mail: Deidrebaird@juno.com

Dante has been my 4-H project animal for three years. He was born in our pasture in April 1996. It has been fun to watch him grow from just a twenty-five pound cria to a 350 pound adult. We have had a lot of fun together in 4-H, at ALSA shows at and away from home.

The day Dante was born, I used parts of the John Mallon tape The First 24 Hours as a guideline in starting a good relationship with a new llama. I spent a lot of time with him that day but I didn't talk to him. I just petted him to desensitize him. Within the first week, I had a halter on him and he would walk with me in the pasture. The second week I could take him away from his mom for ten to fifteen minutes and walk down the driveway and back. While I was walking him I would stop and pick up one of his feet while saying, "Foot." By the third week we were able to easily load in and walk out of the trailer.

After six weeks of working with him on basic things, we started doing a new obstacle each week. For a whole week we would work on one thing. When we started to train on jumps, I would start out with one low jump. By the end of the week we would have two, eighteen inch

high jumps. After each new obstacle was learned we would start on a new one.


The first show we went to we didn't even finish the course. At each show we got a little bit better. Dante and I were beginning to learn how to work as a team.

Then, we had a setback. Dante was chased by dogs and was two miles away from his herd for several days. When we finally got him back he wouldn't let me near him for about two weeks. So, I basically had to start all over again. He would do a few things like load in the trailer, go over bridges, and jump jumps. But, other than that, he didn't want me to pick up his foot or back him because he was inattentive and fearful of his feet being touched.

Gradually I regained his trust by spending time with



him each day. He now backs very well but to this day he still does not like his foot to be touched. I try to avoid touching his feet too much at home or outside of the arena. But, it seems like once we get in the arena he knows why he is there and can deal with me picking up his foot.

The most important thing in developing a good relationship with your llama is to do something with it everyday. The time spent can be as simple as touching and talking to it when you feed or as involved as training on a new obstacle. This time spent together builds trust and a good relationship with your llama. 



The Outback Connection Llamas

Domestic and South American
Bloodlines

David and Kristy Heide
(303) 646-4820

7930 Rd. #158
Elizabeth, CO 80107

David Rudin
Proprietor

Going backcountry is easier with a
little help from a friend.



7589 COUNTY ROAD 102 GUFFEY, CO 80820
719-689-0120

WWW.LLAMABROS.COM

The Story of Roman

Danny Garrett, Elizabeth, Colorado

My husband and I raise cattle. Over the years we had a few losses from coyote attacks. Just in the past few years, there seemed to be a sharp increase in coyote-related losses. We had heard of the protecting qualities of the llama for sheep and thought, why not use a llama to protect cows?

Our friends Ron and Lougene Baird were willing to sell us one of their young males for this purpose. They brought him to us. The first day he got generally admired, petted, looked at and spoiled by everyone so he didn't get put in with any cows. The second day, my husband put Roman in a small pasture with only two cows. The cows started moving toward Roman out of curiosity and he got so upset that he jumped the fence and took off. Kent brought him back and tied him to the outside of the pasture next to a pen of several cows, a bull, and a couple of babies. We left him there for a short time until he stopped pulling away from the snuffeling noises the cows made. We put him back in the small pasture with the two cows. He kept his distance from the cows for a while, but daily he moved closer and closer to them and finally would calmly stay within a few feet of a cow.

We put Roman in a pen with a cow/calf pair to see what he would do. He followed the calf around until the calf would get frightened and disappear behind mama. After a few rounds of Roman sniffing the calf and the calf ducking behind her mama, the cow turned and faced Roman showing her irritation by bellowing at him. He politely stepped away and didn't continue to pursue the calf.

We kept Roman with the cows that were due to calve because that was a favorite time for coyotes to attack either the cow or the newborn calf. He would watch the birthing process, scan the horizon, then turn his attention back to the birthing, then scan the horizon again. Time after time, the cow would get up from calving, tell Roman to move on then proceed to take care of her calf. Roman never offered

to interfere with the birthing process and when the cow got up, he would move off a watchful distance but still keep alert.

Once the cows had all calved, we kept Roman with them out in the pastures. He was drawn to the calves and would lay down beside a calf that was out side the designated area until its mama would call it back, then Roman would go about his business. We even saw him crawl under a hot wire fence to be with a calf that wandered under the wire.

Branding time was one of the most interesting times for us to check Roman's dedication to his job. People come from all over to help with the round up and branding. They drive in and unload their horses, saddle up and bring in the herds where calves are sorted away from their mothers and penned for working. Roman came in with the herd. He showed great agitation. He walked back and forth through the calves watching everything with his tail straight up. We could tell that he was trying to keep the calves together and away from the people. We thought maybe he would bite someone shortly so we asked a friend to halter Roman and walk him across to a quiet pasture where there were a few cows that hadn't calved yet. He managed to calm down and he was let back out with the calves when the day's work was done.

This is the second year that we've had Roman. He has adjusted to the bigger animals but still maintains a little distance. We're fairly certain it is the size of the animal that bothers him. Roman loves the calves and stays with them throughout the summer.

Coyotes? We haven't actually seen him kill one, but haven't had coyote losses when Roman is on guard. When we move cows to different pastures farther out, Roman goes with them. The horses ignore him and the larger animals have accepted his presence. Is he happy? He still gets lots of spoiling and special treats from all three families that live on the ranch so we think he's content. Would we do this again? Absolutely.





**FREE
CATALOG**

Quality LLama Products & Alternate Livestock Supply

"Serving the Alternate Livestock Industry Since 1979"

Full Line of Products for llamas, alpacas, miniature donkeys & horses, and goats

80 page catalog
of top quality products
at affordable prices

Halters
Driving Harness
Barn Supplies
Books
Gifts
Spinning Supplies

Grooming Supplies
Packs
1st Aide
Videos
Farm Banners
Craft Supplies

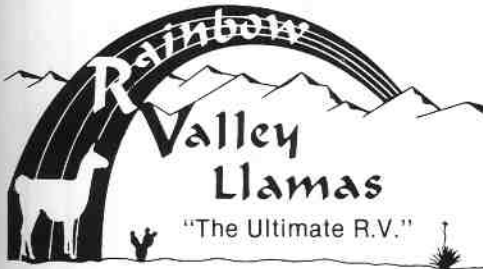
Ph. 800-638-4689

Fax: 800-580-5262 E-mail: sales@llamaproducts.com

On Line: <http://www.llamaproducts.com>

Quality LLama Products
Ed & Nancy Chlarson
33217 Bellinger Scale Rd
Lebanon, OR 97355

**YOUR POT OF GOLD IS
AT THE END OF OUR
RAINBOW**

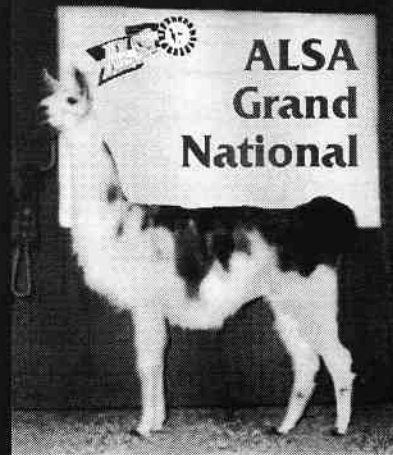


RAINBOW VALLEY LLAMAS
17 Nighthawk Way
Placitas, NM 87043
(505) 867-3442

REID LANGERMAN
MARY SUMMERS
rvllamas@nmia.com

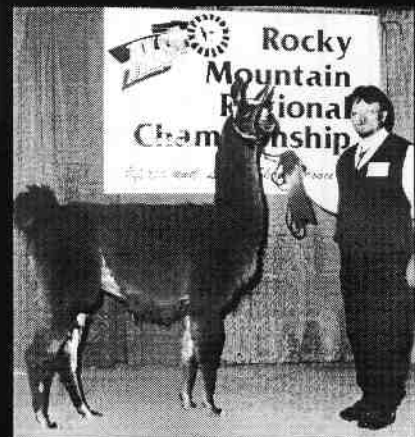
<http://frontpage98.nmia.com/~rvllamas>

INVIERNO



NATIONAL CHAMPION 1998
GRAND CHAMPION, Ft. Worth, TX

SALSA



- 3rd Grand National
- Grand Champion W. Regional '97
- 1st in Regional for '96, '97, '98
- 2 Reserve Championships
- Halter ROM

STUDS



Just for Kids!

HOME

Puzzle created by Ron Hinds, Serendipity Farm

Calendar of non-RMLA Events

ON-GOING

- May - August: Free Learn to Shear Lessons at Pheasant Hill Farm, Boulder, CO
Please call to set up an appointment. Bring your llama or learn with one of ours. Hand and electric shearing. 10 years experience. Or, get a group together and have a Shearing Clinic. Call for details. Sharon Beacham, 303-666-9437 (Denver area), 1-800-465-2567.

JUNE

- Llamas of Central Colorado Springs Llama Show Benefiting The Childrens Hospital Foundation June 5th & 6th, 1999, Colorado Springs, Colorado, Jeff Rucker, Superintendent, 8918 Teller County Road #1 Florissant, Co 80816, e-mail: sslamas@aol.com. Premium book and entry form on website <http://www.coloradollamas.com>
- Llama Packing Clinic And Optional Overnight Trip, June 13th & 14th, Monte Vista, CO. Hosted by Julie Messick, Lla Mariposa Llamas, and Bob Getz, Trail Skills, Inc. at Lost Trail Ranch. For info, contact Julie at 719-852-4852 or e-mail jmessick@amigo.net
- 4th Annual Rocky Mountain Alpaca Roundup at the Estes Park Wool Market, June 19-20, 1999 Alpaca ALSA show. Contact The City of Estes Park - Linda Hinze - phone 970-586-6104, 970-586-3661 fax or e-mail: lhinze@estes.org Sponsored by the Alpaca Breeders of the Rockies - <http://www.alpacabreeders.org>
- Walkabout III at Hinterland, Sisters, OR — June 29, Preview & Breeding Seminar — June 30, Auction - Contact Kay or Toni at phone (541)549-1215 or (541)549-5262 fax.

AUGUST

- Laramie County Llama Show, Cheyenne, WY - August 7th & 8th, Contact Superintendent Dick Beach for more information, Judge is John McCullough
- Felting and Dyeing Seminar, August 14th, 1999, with Karen Kinyon and Chris Switzer at the Buckhorn Llama Store, Masonville, CO Contact Karen (970)484-6241 or Chris (970) 586-4624
- Wyoming State Fair Llama Shows, Douglas, Wyoming, August 14-15. Two ALSA sanctioned shows. Judges: Bruce Connally and Alaine Byers. Contact Ellen Schreiner for more information. Phone (307) 265-1780. FAX 307- 265-4465 or email ellen@SilverSageLlamas.com .

SEPTEMBER

- Third Annual Alpaca Fall Festival Adams County Fair Grounds, Brighton, CO - Saturday, September 18th 9am to 4pm. Farm booths with alpacas and their breeders, demonstrations, obstacle course, and alpaca garments for sale. Fun for the whole family. Free admission. Sponsored by the Alpaca Breeders of the Rockies - <http://www.alpacabreeders.org> Call 303-988-3080 for more information.

OCTOBER

- Intermediate Spinning and Christmas Weaving Projects, October, 16th, 1999, with Karen Kinyon and Chris Switzer at the Buckhorn Llama Store, Masonville, CO Contact Karen (970)484-6241 or Chris (970) 586-4624.

CLASSIFIED ADS

FIBER PROCESSING - Roamin' Llamas and Woolworks specializes in quality carding of llama and alpaca fiber. Wool cleaning service offered, too. Fast, friendly service. Catch the llama wool wave and market your processed wool for profit. Experiment with blends, colors, and novelty roving for handspinners. Roamin' Llamas and Woolworks, 3550 Big Creek Road, New Meadows, Idaho 83654. 208-347-3151 (8/99)

GOOD PACKERS: 8 geldings, 1 stud, ages 6-up, prices \$500-up, all trail veterans. Stud is a prize. Sopris gear available w/llamas. Lovely 3-yr old pregnant female - \$2,000. Rendezvous Llamas, 503-203-8972. (2/00)

LLAMA HERD REDUCTION SALE - Beautiful heavy wool males & females, all colors, 1/2 to 3/4 Chileans and 1/2 to 3/4 Bolivians, great bloodlines \$650 to \$3,000. Free rebreeding with any female purchase. Moonstar Llamas, Cuffey, CO - Rodney Bryan. 719-689-9760. (11/01)

SPINNING LLAMA AND ALPACA NEW 2nd EDITION now available - 6 additional pages, including 2 new projects. \$12 plus \$2 shipping & CO tax 3.65%. Chris Switzer, Box 3800, Estes Park, CO 80517.

Advertise in the Journal!

WHITE DOLITTLE GRANDDAUGHTER WITH WHITE CRIA. Fancy red female with red cria. Both crias born 1/25/99, males, by Hollybrook's Posh. All from Washington State. Females bred back. \$750 and \$1000. Might trade for 6-8 month female. Also want used llama cart and harness. Leslie Sutherland, Boulder, CO. 303-448-1767.

RANCH AND FARM SUPPLIES. We have everything, guaranteed best prices. Halters, leads, brushes, grooming, show supplies, shears, signs, packs, feeding, watering, carts, scales, chutes, cria care, wormers, vaccines, probiotics, electrolytes, weathervanes, signs, books, videos, clothing, jewelry, fun items, more. *FREE COLOR CATALOG.* USEFUL LLAMA ITEMS, CALEDONIA, MI. 1-800-635-5262. www.useful-items.com. (5/00)

Got a good picture you would like to see on the front cover of the Journal?

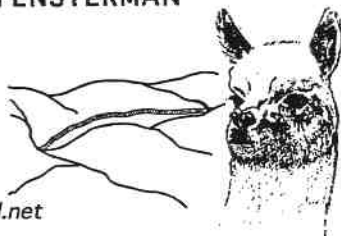
Please send your photo (at least 5x7, but 8x10 is better) to: Teri Nilson Baird, 28825 County Road 5, Elizabeth, Colorado 80107. Include a stamped envelope if you'd like to have it returned.

DESOTO BEND ALPACAS

HELGA AND CLARK FENSTERMAN

8611 County Rd. 41
Fort Calhoun, NE 68023
Phone: 402-426-8078

email: hfensterman@huntel.net



BITTER CREEK LLAMAS



Dick & Kim Murphy
2098 County Rd 512 • Divide, CO 80814 • (719)686-0444

SafeWater™ Anywhere Personal Water Filter Bottles



Drinking safe, clean water from rivers, lakes and streams has never been easier. **Just Dip and Drink!** No moving parts, no pumping, No tablets, no boiling. EPA Approved. **Great for Y2K too!**

2 Micron Replaceable Primary Filter cleans 200 gallons of water. Filter removes Giardia, E. coli, Cryptosporidium, heavy metals, Insecticides, herbicides, petroleum by-products and pesticides. A 25 Micron Cleanable Pre-Filter allows use in dirty, sediment-filled water. Sanitary, waterproof cap.

One-half Liter Bottle, \$34.95. One Liter Bottle, \$39.95.

Both come with nylon mesh carrying bag. S&H extra.
Colorado residents add 3% tax.

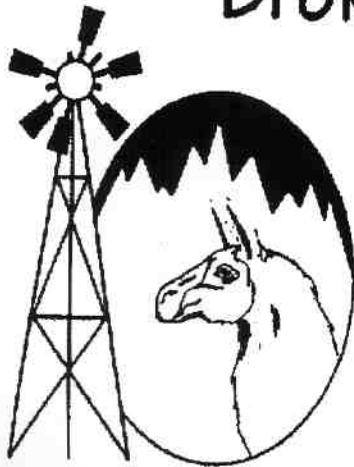
To Order, Contact **Dip and Drink**

Toll Free, 1-888-686-8735

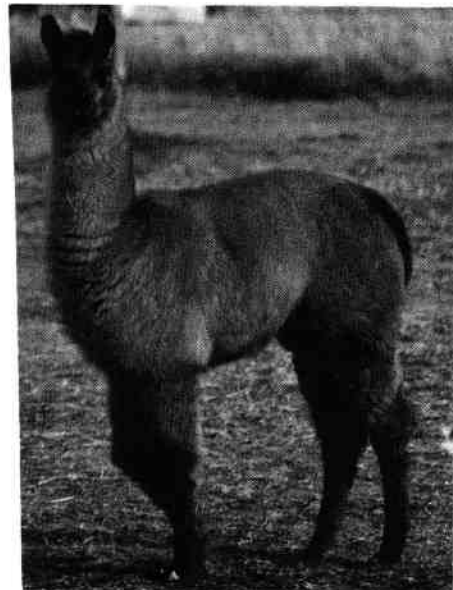
Secure On-line Ordering at www.dipanddrink.com

Field & Stream magazine's 1998 "Best of the Best" award for the most useful, innovative & economical, hunting, and fishing products.

Broken Windmill Ranch



28825 County Road 5
Elizabeth, Colorado 80107
303 646 4373



Broken Windmill Sundowner DOB 10/20/98

Lola's Sassy Little Lady x Gulliver's Traveler

Journal of the Rocky Mountain Llama and Alpaca Association **Advertising Kit**

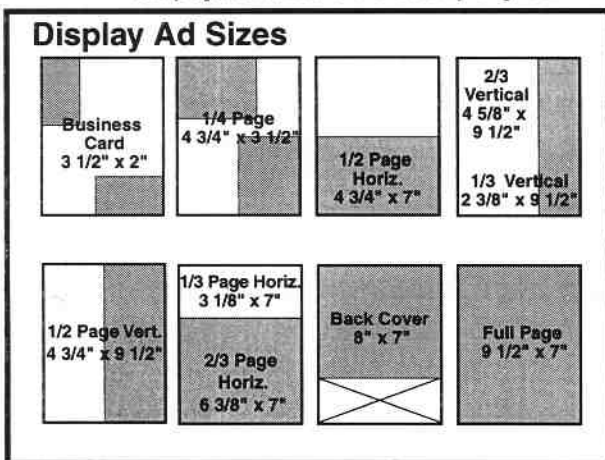
Updated: April, '99

- Photos can be color or black and white, although color is preferred.
- **All layout and design for Journal ads is provided at cost. Pricing is as follows:**
Business card size-\$5, 1/4 page \$10, 1/3rd - \$15, 1/2 - \$20, 2/3rd-\$25, full page \$30.
 Contact Ron Hinds if you need additional information on ad design.
- This publication is black and white. Line screen is 115 lines/in.
- Each spring a promotional issue is printed. The center layout and outside cover is printed with a base color. An additional copies are printed for distribution to the public throughout the year.
- Advertising & Article deadlines are: January 1, April 1, July 1, October 1
 Mail advertisements to: RMLA Journal • 11483 E. Ponderosa Lane,
 Franktown, CO 80116.
- One check payable to RMLA, **include any design costs** –
 full payment **MUST** accompany ad!

Advertising Rates

Ad sizes	1 or 2 issues	Same ad-3 or more issues*
Business Card	\$10	\$10 (no discount)
1/4 Page	\$20	\$18
1/3 Page	\$30	\$27
1/2 Page	\$40	\$36
2/3 Page	\$55	\$49.50
Back Cover	\$50	\$45**
Full Page	\$65	\$58.50
Inside front cover	\$80	\$72
Inside back cover	\$80	\$72
Promotional issue only (with base color)		
Full Page Center layout	\$135/page	
**Back Cover	\$115	

Display Ad Sizes



Classified Ads

RMLA Member-	
50 words	\$5.00
RMLA non-Member-	
50 words	\$10.00
For more than 50 words-	
15¢ per word	

* Multiply amount by number of issues.

Rocky Mountain Llama and Alpaca Association

Membership form

Membership Types

- Individual adult \$30.00/year (1 vote, Journal, directory entry) Date: _____
- Farm/Ranch \$50.00/year. (Couple or 2 individuals with 1 business, 2 votes, Journal, directory entry)
- Junior \$10.00/year (18 or under, must have adult member sponsor, Journal subscription and reduced conf./show fees as encouragement to participate.)
- Life Membership - \$500

Name 1 _____ Farm/Ranch _____ Age (if Junior) _____
 Name 2 _____ Phone _____ Fax _____
Specify Sponsor if Junior membership
 Address _____ City _____ State _____ Zip+4 _____
 E-Mail address _____ Please include, Zip+4 reduces postage costs

Number of Llamas owned: Females _____ Intact Males _____ Geldings _____
 Number of Alpacas owned: _____

Fill out form and mail with your check to:
 Bob & Barbara Hance, RMLA Membership
 11818 W. 52nd Ave.
 Wheat Ridge, CO 80033-2032

Expertise /Interest

- | | | |
|--|--|---|
| <input type="checkbox"/> Breeding (BR) | <input type="checkbox"/> Training (TR) | <input type="checkbox"/> Driving (DR) |
| <input type="checkbox"/> Sales (SL) | <input type="checkbox"/> Products (PR) | <input type="checkbox"/> Boarding (BO) |
| <input type="checkbox"/> Fiber (WL) | <input type="checkbox"/> Research (RE) | <input type="checkbox"/> Judging (JG) |
| <input type="checkbox"/> Packing (PK) | <input type="checkbox"/> Leasing (LE) | <input type="checkbox"/> Brokering (BK) |
| <input type="checkbox"/> Commercial | <input type="checkbox"/> Other Specify _____ | |
- Packing (COM'L PK) _____

Committee Interest

- | | | |
|--|---|--------------------------------------|
| <input type="checkbox"/> Finance | <input type="checkbox"/> Marketing | <input type="checkbox"/> Fiber |
| <input type="checkbox"/> Continuing Ed. | <input type="checkbox"/> Nominations/Elect. | <input type="checkbox"/> Membership |
| <input type="checkbox"/> Packing | <input type="checkbox"/> Research | <input type="checkbox"/> Performance |
| <input type="checkbox"/> 4 - H | <input type="checkbox"/> By-Laws | <input type="checkbox"/> Library |
| <input type="checkbox"/> Other Specify _____ | | |

Volunteering in RMLA is very rewarding, you meet some great people and you get to do some hummin' along the way.

WHY STEWART'S ROYAL ALPACAS?

- * CHILEAN, PERUVIAN, BOLIVIAN
- * Wide choice of colors
- * Assistance to new breeders
- * Competitive prices with volume discounts
- * Young healthy animals
- * Small farm for personalized support
- * Boarding for your Alpacas
- * Superior Quality Crias, Weanlings and Adults for sale

- * EXCEPTIONAL HERDSIRES
- * **Technical Assistance with**
 - Nutrition
 - Ranch Layout
 - BARN
 - FENCES
 - WATERERS
 - Camelid Reproduction
 - Marketing your Alpacas and yarn

Easy to Care for
Profitable
Family Enjoyment
Excellent
Tax Advantage

**Call for appointment
to visit and have
a hands on experience.**

2200 Twylby Rd.
Larkspur, CO 80118
(719)488-5594
(719)488-5601 fax

E-mail: alpacastew@aol.com



LIST OF ADVERTISERS

Alpaca Breeders of the Rockies.....	13	Outback Connection, The	41
Andy Marquez Gallery	3	Overland Trail Llamas	19
Bitter Creek Llamas	46	Paradise Ranch	12
Broken Windmill Ranch	47	Pheasant Hill Farm	26, 27
Burning Mountain Llamas	29	Plum Valley Llamas	52
Cache La Poudre Minerals	25	Quality Llama Products & Alternate Livestock Supply	43
Caring for Llamas and Alpacas	30	Rainbow Valley Llamas	12, 43
Collegiate Peaks Llamas	9	Rancho Linda Vista	5
DeColores Llama Ranch	14	Rock-n-M Llama Ranch	2
Desoto Bend Alpacas	46	Rocky Mountain Llama Fiber Pool ..	19
Diamond Oaks Llamas	40	Rosebud Llamas Utah	25
Dip and Drink	47	Serendipity Farm Llamas & Alpacas	50
Double J Llamas	40	Shiloh Ranch	35
Earley's Llamas	40	Stewart's Royal Alpacas	49
Ears to you! Llama Ranch	15	Stillwater Minerals	38
Feathers & Friends Farm	34	Switzer Land Farm	20
Gentle Day Farm	34	Trout Creek Llamas	51
Grand Valley Llamas	11	Two Toes Ranch	23
Hance Ranch	21	Useful Llama Items - Useful Alpaca Items	7, 34
Hillcrest Llama Ranch	31	Wheatfield Llamas	9
Indian Peaks Llamas	26, 27, 31	Wilderness Bound Llamas	39
Kiowa Creek Llamas	37	Winding Trails Llamas	5, 34
Llama Brothers Trekking Company	41	Yocom-McColl Testing Laboratories	12
Llamarage	5		
Northern Colorado Llamas	40		
Ollie Llamas	17		



Whoa, lots of alpacas, females, pregnant, males and weanlings (or soon to be) available. Yep, a few young llamas too!

Some ours, some on consignment from Three Meadows Ranch and Blohming Alpacas.

(Still have a couple gelded (packing) llamas, too.)

Ron and Marie Hinds
38620 CR 29
Elizabeth, CO 80107-8702
(303)646-2665
(303)646-2654 fax
800-576-1799 sales and emergencies
sdf lama@bewellnet.com
<http://www.serendipityfarm.com>

Want to see all of the kids? go here.



Trout Creek Llamas

Bolivian, Chilean, Canadian
and domestic bloodlines

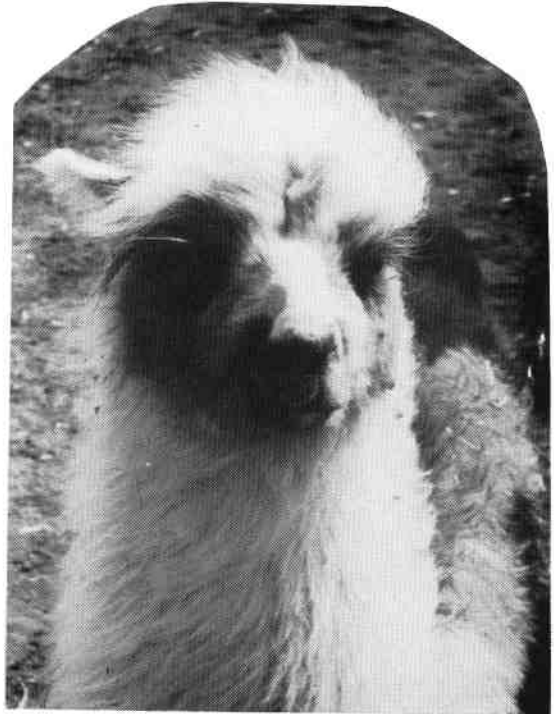
YOUR TYPE OF ANIMAL –
FROM PET TO SHOW QUALITY

GUARD ANIMALS

MANAGEABLE AND GENTLE
dispositions

CORRECT CONFORMATIONS

VISITORS ALWAYS WELCOME!



AM I CUTE OR WHAT?

BOARDING
IN THE
Cool Rockies

COMFORTABLE
ACCOMODATIONS
FOR YOUR
MALES AND FEMALES

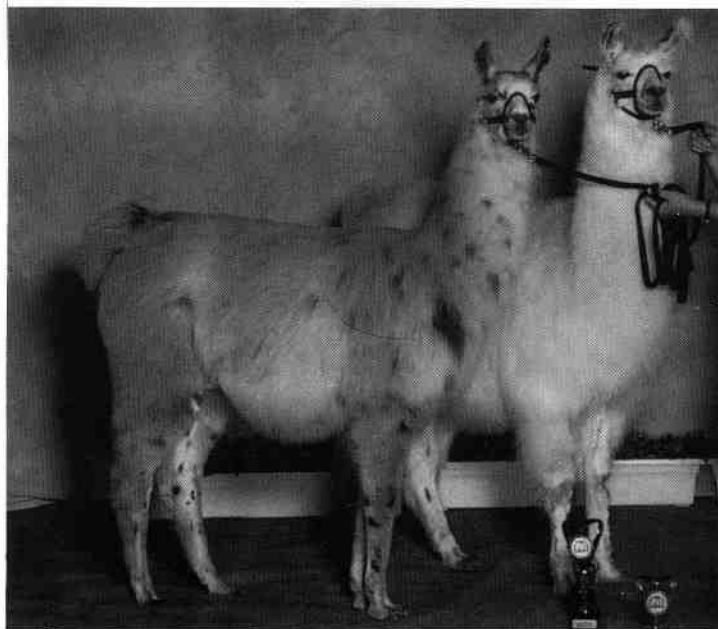


Trout Creek
Llamas

Rick & Jan Cummer (303) 647-2429
P.O. Box 6848 • Woodland Park • CO 80866

Plum Valley Llamas

Sedalia, Colorado



1998 Nebraska State Fair

***Grand Champion Light/Medium Male
PVLR Cumberland Blues***

***Reserve Grand Champion Heavy Female
PVLR Sugar Magnolia***

Sire

***ALSA Grand Champion
Tabernash***

Dam

***ALSA Produce of Dam
Regional Champion
Kobresia***

Sire

***ALSA Halter Champion
Peruvian Bardo***

Dam

***ALSA Halter Champion
PHF Alouette***

*ALSA Championship lines ... We strive to produce llamas that succeed ...
In the show ring ... on the trail ... for fiber production ... for breeding ...*

Lougene, Deidre and Ron Baird

303.688.5445

e-mail: lougene@att.net

RMLA
11818 W. 52nd Ave.
Wheat Ridge, CO 80033-2032

Address Service Requested

U.S. Postage
PAID
Kansas City, MO
Permit No. 6035