

February  
1999

Journal  
OF THE  
RMLA



Rocky Mountain Llama and Alpaca Association



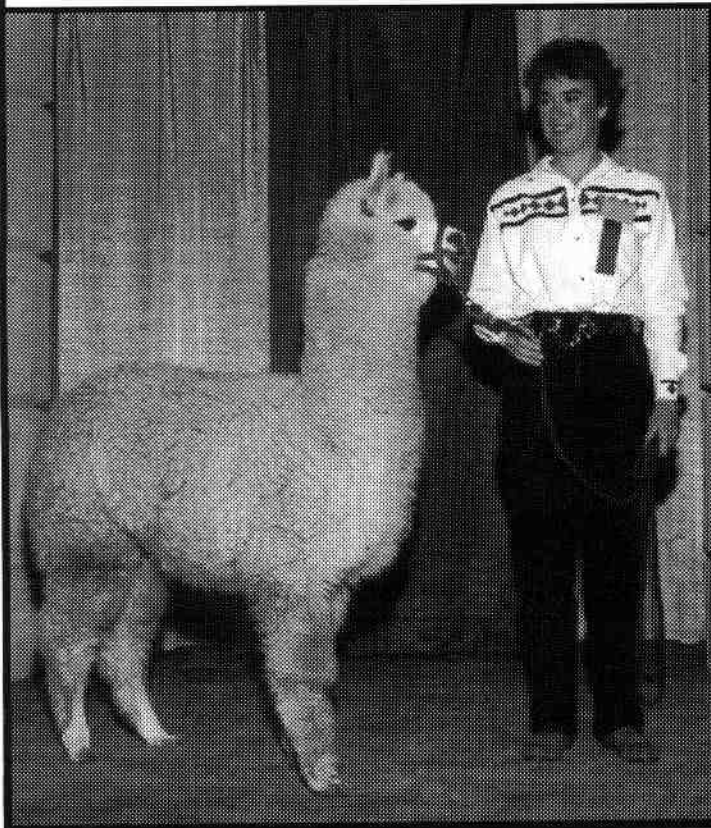
# WHY STEWART'S ROYAL ALPACAS?

- \* CHILEAN, PERUVIAN, BOLIVIAN
- \* Wide choice of colors
- \* Assistance to new breeders
- \* Competitive prices with volume discounts
- \* Young healthy animals
- \* Small farm for personalized support
- \* Boarding for your Alpacas
- \* Superior Quality Crias, Weanlings and Adults for sale

- \* EXCEPTIONAL HERDSIRES
- \* **Technical Assistance with**
  - Nutrition
  - Ranch Layout
    - BARN
    - FENCES
    - WATERERS
  - Camelid Reproduction
  - Marketing your Alpacas and yarn

Easy to Care for  
Profitable  
Family Enjoyment  
Excellent  
Tax Advantage

**Call for appointment  
to visit and have  
a hands on experience.**



# in this issue...

calendar of events...	6	minutes of the annual meeting	8
felting for fun and therapy		12	
leadville 100 - llama lookout aide station		14	
molly - lessons and love		18	
the 1999 national western		llama show results & photos	20
<i>All the pics are here!</i>		<i>WOW! 13 pages!</i>	
	for the love of linus	38	
the ila newsletter & information network		48	
with a word scramble puzzle on page 51			

**ALSO:**



How to Judge a Youth Judging Contest .....	34
Llama Elderhostel again scheduled at Pingree Park .....	35
Research Committee Report .....	36
4-H Corner .....	42
Treasurer's Report .....	43
What's up at the RMLA Bookstore? .....	44
Library Report .....	46
Membership report, address changes and new members .....	52
RMLA Fiber Booth - Record sales in 1998 .....	54
Classified ads .....	55
Caring for Llamas and Alpacas - To Order .....	56
RMLA (mini) Membership form .....	56
Advertising (Media kit) .....	57

# Rocky Mountain Llama and Alpaca Association

## Board of Directors

<i>President</i>	<i>President-Elect</i>	<i>Vice-President</i>	<i>Secretary</i>	<i>Treasurer</i>	<i>Past-President</i>
<b>Bruce Ellis</b> 10725 E. Camelot Dr. Franktown, CO 80116-9471 (303)688-9466 bee@bee.com	<b>Ken Rogers</b> 2068 CR 152 Divide, CO 80814 (719) 687-1155 (719) 686-1686 fax kenr@codenet.net	<b>Jerry Dunn</b> 14550 W. 50th Ave. Golden, CO 80403 (303) 277-1129 (303) 277-1129 fax beartrak@gte.net	<b>Jan Redenbarger</b> P.O. Box 7096 Golden, CO 80403-0100 (303)642-0140 (303)642-1602 fax jredenba@ix.netcom.com	<b>Lougene Baird</b> 2210 Pine Wood Rd. Sedalia, CO 80135 (303) 688-1887 (303) 688-6814 fax lougene@att.net	<b>Bob Riley</b> (non-voting) P.O. Box 1189 Lyons, CO 80540 (303)823-5409 (303)823-0643 fax llama@llama.org

## Other Volunteers

<i>Librarian</i>	<i>Marketing</i>	<i>Bookstore Managers</i>	<i>Membership</i>	<i>4-H and Youth</i>	<i>Journal Editors</i>
<b>Sharon Herbold</b> 15350 Highway 83 Colorado Springs, CO 80921 (719) 495-3092 (719) 495-3092 fax ppwoolies@earthlink.com	<b>Chuck Stewart</b> 2200 Twylby Rd. Larkspur, CO 80118-5700 (719)488-5594 (719)488 5601 fax alpacastew@aol.com	<b>Keith &amp; Katy Wegner</b> 17190 W. 57th Place Golden, CO 80403-1113 (303)273-9445 k2wegne@ibm.net	<b>Bob &amp; Barbara Hance</b> 11818 W. 52nd Ave. Wheat Ridge, CO 80033-2032 (303)422-4681 (303)422-3568 fax hancelama@att.net	<b>Grace C. Gerber</b> 10290 E. Jones Rd. Larkspur, CO 80118 (303) 814-0047 ggerberlff@aol.com	<b>Ron &amp; Marie Hinds</b> 38620 Cnty Rd 29 Elizabeth, CO 80107-8702 (303) 646-2665 (303) 646-2654 fax sdfllama@bewellnet.com

## Committees

<i>Committee</i>	<i>Liasion</i>	<i>Chairperson</i>	<i>Telephone</i>
Finance	Ken Rogers	Ken Rogers	719-687-1155
Continuing Education	Jerry Dunn	Jerry Dunn	303-277-1129
Spring Conference	Baird/Dunn	Judy Sealy	970-241-7921
4-H and Youth	Jan Redenbarger	Grace Gerber	303-814-0047
Marketing	Bruce Ellis	Chuck Stewart	303-488-5594
Nominations/Elections	Bruce Ellis	Craig Dierksen & Rosie DeLullo	303-621-2584
Research	Bruce Ellis	Ron Baird	303-688-5445
By-Laws	Jerry Dunn	Jo Riley	303-823-5409
Fiber	Bruce Ellis	Sharon Beacham	303-666-9437
Membership	Lougene Baird	Bob & Barbara Hance	303-422-4681
Library	Lougene Baird	Sharon Herbold	719-495-3092
Events Committee	Jerry Dunn	Jerry Dunn	303-277-1129
Publishing	Lougene Baird	Newsletter: Mary Mauz Journal: Ron & Marie Hinds	303-277-1129 303-646-2665

## Journal Staff

Editors: Ron and Marie Hinds

Associate Editors: Bob and Barbara Hance, Hance Ranch

Proof Reader: Jan Adamcyk, Kiowa Creek Llamas

### Journal Schedule

<u>Issue</u>	<u>Deadline</u>
February .....	January 1
* May .....	April 1
August .....	July 1
November .....	October 1

\* Promotional Issue

Advertising kit is near the back of every Journal.

© 1999 The Rocky Mountain Llama and Alpaca Association

Reproduction of articles herein is authorized subject to written permission being obtained from the individual authors. "Exchange Newsletters" may reproduce articles as needed so long as the author and the publication are given credit for the original work. Exception: Articles denoted with © or "ALL RIGHTS RESERVED" *must* get approval from the author.

**NOTES:** The information contained in this Journal is not intended to be a substitute for qualified professional advice. Our readers are encouraged to consult with their own veterinarian, accountant or attorney with any questions concerning their animals or business operations. RMLA is not responsible for any losses resulting from reader's failure to heed this caution.

The views expressed by the writers of the articles herein are not necessarily those of the Rocky Mountain Llama and Alpaca Association, its board and/or its members.

# "PATIÑO'S PRIDE"

*For the Focused Breeding Program*



We are thrilled to introduce our statuesque herd sire to the Rocky Mountain Region. Selected from Ron and Maggie Schuler's herd at Bauernheim's Llamas, Patíño's Pride exemplifies a rich tradition of strong pedigree, fine lustrous fiber, with correct conformation and the traditional llama silhouette. Standing 45" at the withers and still growing!

Pride's pedigree reads like a who's/who of strong, genetically proven domestic lines, that generation after generation have improved on the traits we are looking for: Overall balance, eye appeal, presence and style.

## "PATIÑO'S PRIDE"

DOB 3-23-96      ILR #R163250  
Patíño      Bauernheim's Niña  
Sundance x Carma      Aladdin x Naima



Rose Mary Zeschin  
Hillcrest Llama Ranch  
12680 W.C.R. 28  
Platteville, CO 80651  
970-785-2398



Alaine Byers  
Indian Peaks Llamas  
PO BOX 202  
Ward, CO 80481  
303-459-3245

\$800.

INTRODUCTORY BREEDING FEE  
UNTIL MAY '99

# CALENDAR OF EVENTS

---

## JANUARY

- National Western Stock Show Llama Show, January 8-9, **2000** - Contact Jerry Dunn 303-277-1129

## FEBRUARY

- Have a Heart LLama Show, Las Cruces, NM - February 13, 1999
- Valentine's Llama Show-Alpacas, Too! February 14, 1999 - Contact Mary Summers 505-867-3442

## MARCH

- Willamette Valley Llama Foundation Annual Banquet and Stud Service Auction, Wilsonville, OR, March 6th, 1999 - All profits go to llama research. For information, call Susan Walker (503)631-7222 or e-mail: heritagesw@aol.com
- St. Patrick's Day Parade, Denver, Colorado, March 14, 1999 -Contact Jim Haas 303-670-3373
- Four States Agriculture Expo, Montezuma Fairgrounds, Cortez, CO, March 11 - 13, 1999  
Demonstration only, no show. Contact Pete Peterson 970-565-0785
- Llamas/Alpacas and Kids in the Park, Wheat Ridge, CO - March 27,1999 - Contact Jerry Dunn 303-277-1129

## APRIL

- Bear Track Farm Driving Clinic, Golden, CO, April 24-25,1999 - Contact Jerry Dunn at 303-277-1129.
- ALSA Combined Show/Conformation and Beginning Judges Clinic, April 24-26 hosted by ROCK-n-M Llamas in Arkansas City, KS. The instructor will be Ray Howard. For information contact: Patti Morgan, Route 3, Box 177-1, Arkansas City, KS 67005, 316-442-4996, fax 316-442-1590, email:pmmorgan@horizon.hit.net
- RMLA Mini-Conference, Contact Jerry Dunn 303-277-1129

## MAY

- Jelly Bean Classic-Llama Fun Day, Arvada, CO, May 15,1999 - Contact Mary Mauz at 303-526-0092
- Banana Belt Llama Classic, Hotchkiss, CO, May 22, 1999 - Contact Cliff Harding at 970-527-5122
- Western Slope Llama Classic, May 23, 1999 - Contact Cliff Harding 970-527-5122
- New Mexico Spring Fling, Santa Fe, NM, May 1-2, 1999 - Contact Sarah Moody and Kathy Walker.

## JUNE

- Llamas of Central Colorado Springs Llama Show Benefiting The Childrens Hospital Foundation June 5th & 6th, 1999, Colorado Springs, Colorado, Jeff Rucker, Superintendent, 8918 Teller County Road #1 Florissant, Co 80816, e-mail: ssllamas@aol.com. Premium book and entry form on website <http://www.coloradollamas.com>
- Llama Packing Clinic And Optional Overnight Trip, June 13th & 14th, Monte Vista, CO. Hosted by Julie Messick, Lla Mariposa Llamas, and Bob Getz, Trail Skills, Inc. at Lost Trail Ranch. For info, contact Julie at 719-852-4852 or e-mail [jmessick@amigo.net](mailto:jmessick@amigo.net)

- Performance Pack Trials, June 18, 1999 - Contact Bob Riley 303-823-5409.
- Estes Park Wool Market, June 19-20, 1999 Llama and Alpaca ALSA shows, wool barn  
*This is the largest Llama Show in North America and the second largest Alpaca Show in North America* - Contact The City of Estes Park - Linda Hinze - phone 970-586-6104, 970-586-3661 fax or e-mail: lhinze@estes.org (Yes, Linda has e-mail now!!!)
- Walkabout III at Hinterland, Sisters, OR — June 29, Preview & Breeding Seminar — June 30, Auction - Contact Kay or Toni at phone (541)549-1215 or (541)549-5262 fax.
- Red River Rendezvous Llama Show, Contact Mary Summers 505-867-3442

## JULY

- Douglas County Summer Classic Youth Show. Castle Rock, CO - July 11, 1999 - Contact Lougene Baird 303-688-5445
- Fairplay Llama Pack Race, July 24, 1999, Contact Roger Miller 719-749-0119
- The Big Horn Rendezvous, July 30 - August 1, 1999 Sheridan, Wyoming. ALSA Sanctioned. The first and oldest llama show in the country is back this year. Come and enjoy a beautiful weekend in the Big Horn Mountains. Halter classes, outdoor performance classes, cart driving, youth classes, youth judging and pack trials. Premium money will be awarded in all classes. For more information or a premium book contact: Barbara Coffman-Flinn, P.O. Box 541, Story, WY 82842, 307-683-2548, E-mail: cloudpk@wavecom.net or Lori Hink 1651 N. Mountain View Dr., Sheridan, WY 82801, 307-674-9668, E-mail: jlhink@webtv.net

## AUGUST

- Laramie County Llama Show, Cheyenne, WY - August 7th & 8th, Contact Superintendent Dick Beach for more information, Judge is John McCullough
- Boulder County Youth Show, Contact Mary Beth Hartsough 970-785-2463

## SEPTEMBER

- LOCC Summer Classic Llama Show, Colorado Springs, CO - September 11-12, 1999 Contact Mark Wittrup 719-683-2834
- Third Annual Alpaca Fall Festival in Brighton, CO - September 18th 9am to 4pm. Farm booths with alpacas and their breeders, demonstrations, obstacle course, and alpaca garments for sale. Fun for the whole family. Free admission. Sponsored by the Alpaca Breeders of the Rockies - <http://www.alpacabreeders.org> Call 303-988-3080 for more information.



USA Today has come out with a new survey: Apparently three out of four people make up 75 percent of the population." —David Letterman

## On The Cover...

The picture on the front cover took first place at the National Western Llama Show Photography contest... and it is customary to put it on the front of the 'next' Journal (and 2nd and 3rd place inside).

This year's winning photo was submitted by Robert and Jill Knuckle, Tall Tail Ranch, 2970 A 1/2 Road, Grand Junction, CO 81503 (970) 241-4112. 3rd place photo in also inside. 2nd place?, I don't know where it is...

# Minutes of the Annual Meeting of the Rocky Mountain Llama and Alpaca Association

October 24, 1998

The meeting was called to order October 24, 1998 by President Bob Riley at the Ramada Inn Motel and Conference Center in Colorado Springs, CO. There were approximately 90 members present. Minutes from the previous annual meeting were approved.

Results of the Board of Directors election were announced. New officers for the coming year are:

President - Bruce Ellis  
President-Elect - Ken Rogers  
Vice President - Jerry Dunn  
Treasurer - Lougene Baird  
Secretary - Jan Redenbarger.

## Reports

### President's Report by Bruce Ellis:

RMLA has seen growth of ranches from 1995-98. Lots of growth was seen from '97 to '98 of 380 - 440 ranches. By state CO, WY and TX have the most members. RMLA has members in every state but 13 and Italy, Spain, Australia.

Board meeting highlights from the 10/3/98 meeting:

- Created a past-president's position to sit on the board, in a non-voting position for input and continuity.
- Llama Legal Defense Fund is needed because Johne's is surfacing again in Yellowstone and elsewhere.
- Marketing plan; formulated ideas to present to the membership at the annual meeting.

Realigned committees and changed some to become more effective.

Continuing Education: Bob Veuthey, fall '98 conference; Judy Sealy, spring '99 conference.

4-H and Youth: Grace Gerber: Will be putting the 4-H program online so that youth in rural areas can have access. The program books will be put online and what the kids are doing.

Marketing: Chuck Stewart

Nominations/Elections: Craig Dierksen/Rosie DeLullo

Research: Ron Baird

Fiber: Sharon Beacham, chairperson, along with Karen Kinyon: RMLA is the only organization that has an outlet for fiber, more people are consigning to the coop. It is growing every time it travels.

Membership: Bob & Barbara Hance

Library: Sharon Herbold. The last journal had the most up to date list of new entries, they are asterisked. E-mail is the best way to contact the library.

Events: Jerry Dunn

Publishing: Ron & Marie Hinds: The RMLA Journal

Other notes about publishing: CFLA & Youth Manual: Keith & Katy Wegner, distributors, continue to mail 200-350/month.

Close to selling more retail than wholesale. Wholesalers are keeping more copies on hand. Mary Mauz one page newsletter for timely events and announcements to determine if llamas ever carry the disease. Johne's is a disease of filth if the animal areas are cleaned and feed does not come into contact with feces the disease is not a threat.

Marketing: Ken Rogers

The goal of RMLA is to create more public awareness of llamas in the US today. By providing videos to TV stations and news releases to newspapers and radio stations in advance of an ALSA show we can create an awareness of the event. A marketing/new owner kit will have tools for the individual lama owner to use to help sell lamas off of the farm. Promote more use of fiber and develop a niche for lama fiber by promoting the fiber through marketing.

Events: Jerry Dunn

This year over 23 events were held and they were equally split between fun days and shows. Trying to coordinate events this year so that they are not on the same weekends and competing for the same people. RMLA wants to offer a variety of events to chose from. Board decision to cosponsor up to \$200 for advertising of events.

*continued...*



# Stillwater Minerals

Since 1989

**Vitamin & Mineral  
Supplements**



Specifically  
Formulated  
for  
Llamas  
and  
Alpacas

## *Most Accepted Supplement*

Stillwater Minerals is the first widely accepted quality vitamin and mineral supplement based on llama nutritional studies by Dr. LaRue Johnson at Colorado State University.

## *Many Improvements*

We continue to consult with Dr. Johnson on formula adjustments. In the past 5 years, we have added special ingredients to help preserve freshness . . . resist clumping . . . plus, we added more vitamins and minerals to combat stress, aid digestion and encourage wool growth.

## *It Tastes Good Too!*

Most important, we even made it taste better. As Dr. Johnson said, "The best endorsement I can give is that my llamas sure eat more Stillwater Minerals Supplement than they ate of my stuff."

## *The Finest Ingredients*

The ingredients still include Zinpro 100® and Vitamin E, just like the original formula, plus 15 other custom ingredients. These additional ingredients add minerals and vitamins that are not found in any other Llama or Alpaca supplement.

## Four Custom Formulas

*Free delivery for Continental U.S. and packaged in reusable plastic buckets*

### Original Formula Lama-Min 101

Contains Vitamins A, D<sup>3</sup>, E and Minerals Calcium, Phosphorus, Potassium, Iron, Manganese, Cobalt, Iodine, Selenium and Zinc (Zinpro 100). All balanced for llamas and alpacas.

25 lbs: \$39.50 50 lbs: \$67.50

### Stress Formula Lama-Min 102

Same ingredients as 101 plus higher levels of all Vitamins and Selenium. Contains Electrolytes to promote water intake - ideal for summer use or other high stress situations.

10 lbs: \$22.95 25 lbs: \$45.50 50 lbs: \$77.50

### Premium Lama-Min 103

Same as 102 plus DL-Methionine and B-PlexFive for wool quality and growth. This formula has added Copper for feeding programs known to be deficient in Copper.

10 lbs: \$24.95 25 lbs: \$49.50 50 lbs: \$83.50

### Premium Lama-Min 104

Same as 102 but with Calcium and Phosphorus balanced for alfalfa, plus the highest levels of Vitamins D<sup>3</sup>, and E. Contains DL-Methionine and B-PlexFive for wool quality and growth. Ideal for winter use or diet supplemented with grain.

10 lbs: \$24.95 25 lbs: \$49.50 50 lbs: \$83.50

## To Place Your Order or for More Information



Owned by fellow Llama owners, Bob & Jo Riley  
Post Office Box 1189, Lyons, CO 80540

**800•255•0357**

FAX: 800•648•2383 E-Mail: llama@orci.com



For more detailed information or to order on the Web — <http://www.llama.org/minerals>

RMLA Meeting, cont.

<u>Treasurers Report:</u> Lougene Baird	
General operations /corp.	\$9190.
CFLA	\$7000.
Savings: Life	\$4100.
Reserve	\$7170.
CFLA production	\$60.
<u>Assets:</u>	<u>\$23,200.</u>
<u>Total:</u>	<u>\$34,500.</u>

RMLA Volunteer recognition from 1998: Lougene and Jerry

- .Bob Veuthey - chair fall conference
- .Betty Miller-co chair
- .Mary Mauz - Jelly Bean Classic and Lama Newsletter
- .Jim Haas- St. Patrick's Day parade
- .Roger Miller- continued development of Fairplay Pack Llama Race
- .Ron Baird - representing RMLA on the LMRG
- .Ron & Marie Hinds- publishing/editing the RMLA Journal
- .Sharon Herbold- library
- .Bob & Barb Hance-membership
- .Karen Kinyon-fiber coop
- .Sharon Beacham-fiber coop
- .Rosie DeLullo & Craig Dierksen-elections
- .Recognition was given to Jim Osmun for his work with the Leadville 100 Race. (see related article on page 14)
- .The board presented a jacket to Bob for his years of work for RMLA. Thanks Bob!

The results from the conference group exercise on How to Spend Medical Research Dollars

Medical Priorities

1. Heat Stress.
2. If lamas are getting diseases are the medicines approved for lama only use?
3. Interstate blood tests/ what's really necessary?
4. Chronic wasting disease, can it effect lamas?
5. Relationships of antibiotics to specific organisms.
6. Genetic predisposition to birth defects.
7. Castration - timing/results.
8. Eye infections.
9. Fractures.
10. Latest on deworming what's new what works the best.
11. Therapeutic value of lamas.

Marketing

1. Fiber
2. Work applications
3. Public exposure
4. Demographics of buyers/ states/4-H age groups
5. Disney follow through

Fiber:

1. Study on llama fiber: a. warming, b. cooling, c. shrinkage, d. washability, e. To market the llamas for fiber producers

New Business

Dale Pettigrew reminded the conference attendees to rally behind the rescue society. RMLA needs to give regional support to the rescue group.

Barb Harris: Mentor program for the younger youth by the older youth. Three co-chair-persons are: Alissa Veuthey, Brianna Livengood, and Deidre Baird. They will be available through phone calls and Email to answer questions/problems from younger members. Will be denoted in the directory that they can be contacted in the mentor program.

Sue Grimm: FFA will approve llamas for use as project animals

Jerry Dunn: NWSS wants a list of llamas for guard use for the sheep/cattle industry. This service could go national, ranchers have a need for the product.

Motion to Adjourn: Jo Riley  
2nd : Jerry Dunn

Respectfully Submitted,

Jan Redenbarger, Secretary




# RMLA

**Kiowa Creek Llamas**



Jan & Bill Adamcyk      39420 Olson Ct.  
Kiowa, Co. 80117      303-621-2960

**QUALITY LLAMAS FOR PACKING AND PLEASURE**



**SUGAR CREEK LLAMA RANCH**  
PATTI & DICK SANDUSKY  
MAPLE LAKE, MINNESOTA  
(320) 963-3982

# RMLA



This is the 3rd place photo from the National Western Llama Show Photo Contest. It was submitted by Jerry Dunn, Bear Track Farm, 14550 W. 50th Ave., Golden, CO 80403-1707, 303-277-1129 phone/fax, E-mail: [beartrak@gte.com](mailto:beartrak@gte.com). Let's see, the guy on the right is a baseball fan, on the left- is a soccer fan and the one in the middle just appears to be quite comfortable.

I don't know what happened to 2nd place photo. Send it in and I'll print it!

# FELTING FOR FUN AND THERAPY

**S**plish, splash, splat - gottcha! Soap suds were flying everywhere. Sixteen girls and three adults were making white felt Christmas balls and a brown pot holder. Was it fun?- you bet.

New Mexico Girls Ranch school was taking a few hours to do something fun, not related to school work. But it was related to school work, the girls just didn't know it. What is the world's first fabric? Felt. Could just anyone make it? Yes. Was it relaxing to play in the suds and wool? Yup. The knowledge gathered and the therapeutic value of felting were two of the reasons for success.

Listen to the girls: "This is really fun.", "You really want me to be messy?", "It's hard to spread the wool.", "Look at mine.", "Is this ready yet?". Their voices were calm as they chatted among themselves.



**Carolyn and Aisha are completing their first layer.**

Living at Girls Ranch, means each girl is working her own program to learn to make better decisions for her life. School is hard because many of the girls are academically behind when they arrive at the ranch. Catching up on life



**Laying the wool out was more of a struggle for Yadira than for Jessica.**

skills, and school but also facing going home to uncertain situations over Christmas break has made these young ladies more than a little anxious. The felting day provided them all with a new experience, but also gave each of them a space to simply be a kid playing in the water and suds.

Eldon Reyer demonstrated dying wool red and green for decorating the balls. Of course, he used Kool-Aid and Jell-O, products all the girls recognize.

The ranch teachers, Mr. and Mrs. Duseck, were part of the exercise so they got to be kids for a day. Our guest, Clayton Bronchueape, a Teseque tribal member, and Program Coordinator of the National Native American Farmers Association was a guest at the felting session. He has two llamas and wanted experience in fiber use. Ultimately, he and myself will give a program for Native American children at Teseque Pueblo.



Vanessa says, "Soapy hats are in vogue".



Spreading wool takes enormous concentration. L-R: Dee, Jenna, Sara, Vanessa, Jamie, Amanda (standing), Shannon and Jennifer.

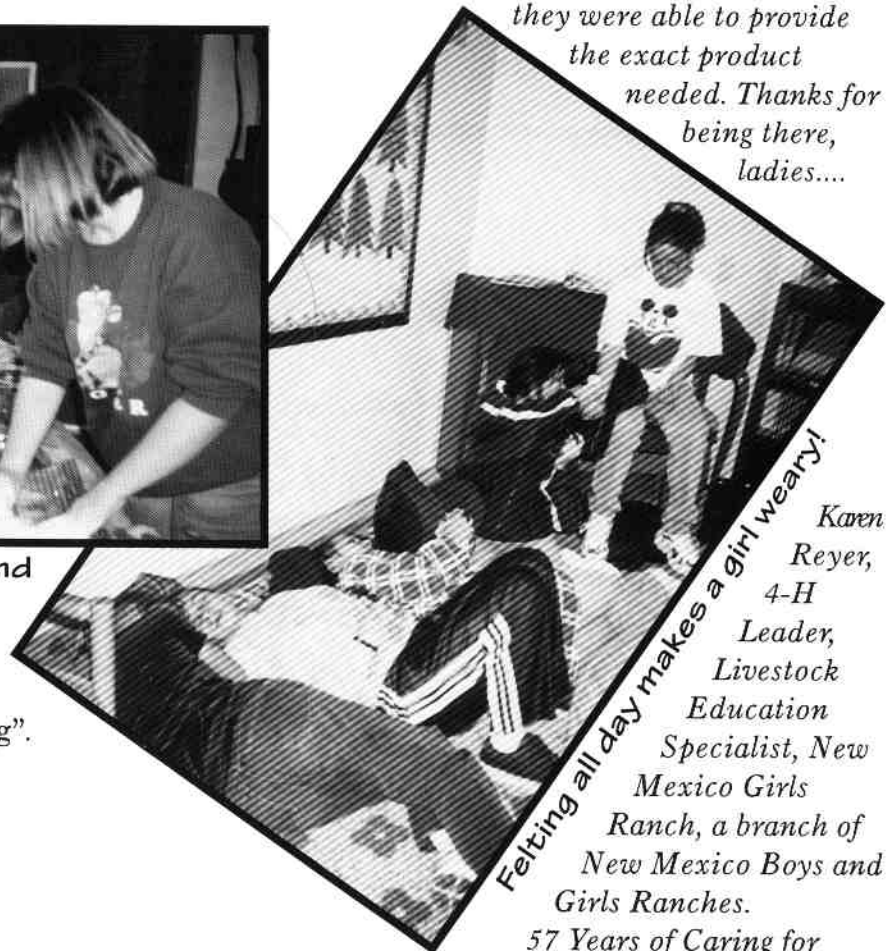
Last but not least the Felting Day gave the girls homemade Christmas presents for family or, each girl has something made by her own hands to remember the "I can do." ethic the ranch espouses.

*The Girls Ranch 4-H Mustangs Club wants to thank the RMLA Fiber Pool, Sharon Beacham and Karen Kinyon, for their assistance. The wool was mailed promptly and they were able to provide the exact product needed. Thanks for being there, ladies....*



Rebeecka, Carolyn, Aisha and Tarissa add soapy water and begin felting.

The 4-H motto is "Learn by Doing". We did.



*Felting all day makes a girl weary!*

*Karen Reyer, 4-H Leader, Livestock Education Specialist, New Mexico Girls Ranch, a branch of New Mexico Boys and Girls Ranches.*

*57 Years of Caring for Children and Uniting Families in New Mexico.*

# LEADVILLE 100 - LLAMA LOOKOUT AIDE STATION

“The Hopeless Crew”

by Pat Militzer • Rolling Rock Llamas • 1190 Marshall Road • Boulder, CO 80303 • 303-494-8219 e-mail: militzerp@ci.boulder.co.us

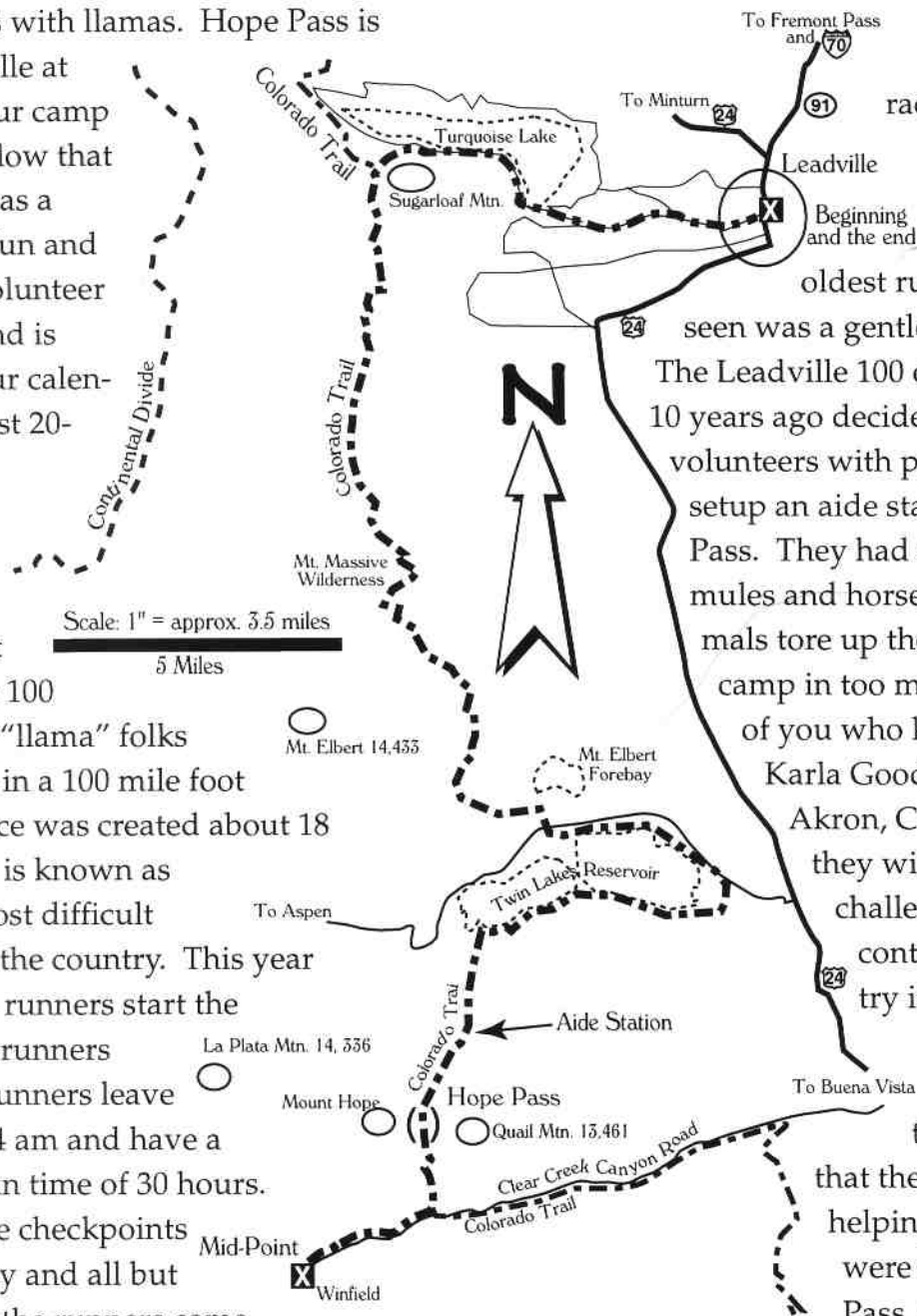
The weekend of August 21-23 my husband and I were fortunate to be part of the crew that setup the Leadville 100 aide station on Hope Pass with llamas. Hope Pass is above Leadville at 12,600' and our camp is just 600' below that summit. It was a memorable, fun and wonderful volunteer experience and is already on our calendar for August 20-22, 1999.

Here is some information about the Leadville 100 and how the “llama” folks got involved in a 100 mile foot race! This race was created about 18 years ago. It is known as one of the most difficult ultra runs in the country. This year they had 391 runners start the race and 209 runners finish. The runners leave Leadville at 4 am and have a maximum run time of 30 hours. There are five checkpoints along the way and all but one of them, the runners come through twice. They run from Leadville, over Sugarloaf Pass (11,000') to Twin Lakes, up and over Hope Pass (12,600') to Winfield which is the 50 mile mark. Then they go back the same

way they just came for the last 50 with a pacer if they so choose. Therefore the aide stations can serve over 600 people in a day! Logistically this is a very difficult race to organize and make safe for all participants. The oldest runner that I have seen was a gentleman of 72.

The Leadville 100 organizers about 10 years ago decided they needed volunteers with pack animals to setup an aide station on Hope Pass. They had already tried mules and horses but the animals tore up the meadow we camp in too much. Well those of you who know Dee and Karla Goodman from Akron, CO know that they will take on a challenge and when contacted, agreed to try it. Ten years later they are still doing it with the volunteers that they can coerce into helping. If volunteers were not at Hope Pass, the runners

would have a 12 mile stretch climbing 2600' and then descending 2000' without assistance in the form of food, water and medical help



Continued on following page



We appreciate the confidence  
you've shown in our  
breeding program



**Indian Peaks Llamas**

THANKS FOR YOUR PURCHASE OF THESE LLAMAS IN 1998:

<u>New Owner</u>	<u>Llama</u>	<u>Sire</u>
<b>Nancy Bradfield &amp; Jess Valentine</b> Erie, Colorado	PHF Marzipan (M) PHF Calamander (M)	Cadfael PHF Solomon's Seal
<b>Mitch &amp; Pam Cogburn</b> Walsh, Colorado	IPL Midnight Cowboy (M)	IPL Camacho Chief
<b>Larry &amp; Deanna Lewellyn</b> Littleton, Colorado	PHF Picacho's Rambutan (M)	Peruvian Picacho
<b>Terry Lynch</b> Longmont, Colorado	IPL Cabella (F)	Gandy Dancer
<b>Allen Suitleck</b> Fort Collins, Colorado	IPL Oreo (M) IPL Storm Warnings (M) IPL Kokomo (M)	IPL Windfall IPL Windfall IPL Windfall
<b>Carol Ann Tallmon</b> Florissant, Colorado	IPL Batik (F)	MGF King Midas

THANKS FOR BRINGING YOUR FEMALES TO BE BRED:

<b>Ron &amp; Lougene Baird</b> Sedalia, Colorado	PVL Shaylyn	Cadfael
<b>Bob &amp; Terry Brenner</b> Idalia, Colorado	Serenity Lane Jinling	PHF Solomon's Seal
<b>Kim &amp; Carolann Evans</b> Berthoud, Colorado	Shadetrees AT Trudy Shadetrees BW Tuity	Cadfael PHF Solomon's Seal
<b>Amy Lockwood</b> Conifer, Colorado	Golden Fleece's Sienna Star	Peruvian Picacho
<b>Jane Sheppard &amp; Jerry Uherek</b> Beasley, Texas	PHF Tsunami PHF Fortune Cookie Overland Trail Red Zinger	Cadfael Cadfael Cadfael
<b>Mark &amp; Cathy Wittrup</b> Falcon, Colorado	Picacho's Implet	Cadfael

Alaine Byers  
INDIAN PEAKS LLAMAS  
P. O. Box 202, Ward, CO 80481  
303-459-3245

"TWO HERDS  
ARE BETTER  
THAN ONE"

John & Sharon Beacham  
PHEASANT HILL FARM  
2380 - 95<sup>th</sup>, Boulder, CO 80301  
303-666-9437 / 800-465-2567

*The Leadville 100, cont...*


and they would have to do it twice. As I understand it Dee and Karla got a few volunteers that first year and they did what they could with what the llamas could carry up. Every year changes because volunteers and their llamas come and go. So you never know until you get there who will be participating in the weekend. But Dee makes sure that all the supplies are provided for the aide station. Sometimes the loads are heavier or lighter depending on the amount of llama power that we end up with.

This year was our fifth year to volunteer. The aide station was once again very successful and fun. We had 40 llamas (Dee brought 15 of his own!), 7 horses and 32 hardworking volunteers from the age of 4 up to the 60's. The llamas and horses carry most of the equipment needed which is about 2000 lbs. worth. The horse folks started joining us 3 years ago after meeting us while packing on the Colorado Trail during a Leadville 100. Many people also carry backpacks to help the llamas and some people have no llamas so they carry their own personal gear. We hike up on Friday 6-7 miles (depending if the river is too high to cross or not) and setup camp which includes personal tents, cook tent, medical tent, food storage tent, pump water, etc. Saturday we prepare the food in the morning before the runners start arriving around 11 am and serve food and water all day until the last runners come through about 10 pm. "Sweepers" usually comes through from Winfield on their way to Twin Lakes to make sure no runners are left on the trails. The runners are kept track of by a ham radio operator and he stays in contact with race officials. Saturday night we relax, have a big

bonfire and collapse in our tents. Sunday we pack up and head back down the mountain which takes only about 2 hours (a lot less than the sometimes 6-8 hours for some people and llamas to make it up on Friday).

Our campsite looks like a little village. We camp just above the lake and from that lake we filter up to 200 gallons of water for the weekend. We use triple filters and a pump run by dry-cell batteries. We provide the runners with a medic tent that sleeps six, and volunteer medics. This year they had 5 runners spend the night in the tent suffering from various ailments but able to walk back down in the morning. The medics provide oxygen, fluids, various other medical items, a warm sleeping bag and good care. The aide station is known for it's hot "chicken ramon soup", which is prepared all day in our large, warm, cook tent. We also serve up cookies, oranges, bananas, brownies, crackers, power-gel, power-aid drink, M&M's, Coke and Sprite. This year we served 9 cases of pop which is a heavy load for the llamas. We also fill water

**LLINN'S LLAMA LAND**  
FOR SALE, FOR FUN  
FOR SHOW



LINN JACKSON  
455 WILDWOOD DR  
GRAND JCT CO  
970-245-3833  
linslamalnd@aol.com



bottles with our fresh, clean water. The kids really enjoy providing this service with their never ending energy!

And what do we get for doing this wild, crazy, hard-work weekend?? Well we get to enjoy a few days with our favorite llamas doing the things that we and the llamas enjoy doing...packing, hiking and seeing the beauty in the "high country". We get to see old friends and meet new friends. We get to volunteer our time to a group of 350+ runners whom we don't even know, but who depend on us to be there to make their task a little easier. And they thank us throughout the day and night for being there. I think most of them vote us as the best aide station in the whole race! We get to enjoy the weather if the sun is shining, the rain is falling or it is snowing! And we get a free t-shirt and enjoy a mexican dinner Sunday before heading back home.

We would like to say 'thank you' to Dee and Karla for organizing this all these years and promoting the use of llamas and their low impact on the trails. And thanks to all the wonderful and crazy volunteers (human and llama) who make it happen. Put it on your calendar for next year about this time and call Dee at 970-345-2927 for more info. Get yourself and your llamas in shape a few weeks before to make it a more enjoyable experience for all. I didn't say it was "easy" did I?

**Happy llama trails to all!**

I have six locks on my door all in a row. When I go out, I lock every other one. I figure no matter how long somebody stands there picking the locks, they are always locking three. —  
*Elayne Boosler*

## SWITZER LAND FARM

alpacos

books

hats

jackets

llamas

scarves

shawls

sweaters

wool

yarn

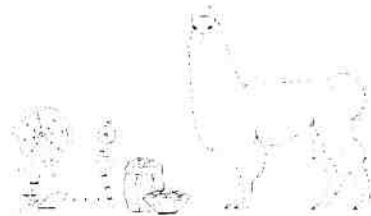
COME VISIT  
THE FARM  
& STUDIO

MAIL  
ORDERS  
WELCOME

Special equipment and tools  
for carding, spinning and weaving

Chris Switzer • Box 3800 • Estes Park, CO 80517  
(970)586-4624 • FAX (970)577-0775

## ROCKY MOUNTAIN LAMA FIBER POOL



We're now collecting llama and alpaca fiber for shipment to the International Textile Center in March.

Please send for our free brochure which describes Fiber Pool services or phone for information.

Sharon Beacham  
2380 - 95<sup>th</sup> Street  
Boulder, CO 80301  
303/ 666-9437

Karen R. Kinyon  
2933 E. Mulberry  
Ft. Collins, CO 80524  
970/ 484-6241

# Molly — Lessons and Love

By Vickie Foster, Ranch Manager - Rocky Mountain Llamas



any of us who have learned to love and listen to llamas have had our lives enriched and our levels of awareness raised through our experiences with our silent friends. This fall, one of the boarding females at Rocky

Mountain Llamas experienced an exacerbation of arthritis that left her lame and immobile. Because the herd at RML has aged significantly over the years, we have learned to recognize and accept that many of our beloved friends must leave us. Bobra Goldsmith, the owner of RML, has always been clear regarding her beliefs—if an animal is in pain or has a negative quality of life with no hope of improvement, then the animal will be euthanized. We say good-bye to our long-time friends with reluctance and often with unbelievable sadness, but also with a firm conviction that it is the right thing to do. In October, Spook (perhaps the most intelligent llama we have known) looked at Bobra and told her that he was ready to move on...he made it easy for us and for Bobra because he clearly communicated his direction...as he has always done... there was no question regarding what Spook wanted. With her usual courage, Bobra said good-bye, yet again, to one of the foundation llamas of her herd. Shortly after Spook's passing, Molly presented us with a different situation and challenge. Molly's owners are Buddhist and have very strong beliefs against "killing" any living being. We were presented with the conflict of wanting to support and acknowledge the beliefs of the owners and the strong desire not to put a llama that we loved through needless pain and suffering.

In all honesty, of all of us who helped care for Molly, I was the least tolerant of her owner's position regarding non-euthanasia. It was clear to me what the eventual course of Molly's health would be and I worried that she might suffer needlessly. We experienced a mild fall and during this time we gave Molly multiple medications hoping to cure or improve her arthritis. We massaged her, we moved her into the standing position

using a block and tackle—we encouraged her and loved her and worked with her as best we could. Throughout the fall, Molly was cheerful, with lots of appetite and always accepting of our many ministrations. Molly's caretakers included Carol Lontine (Carol came into our lives one day when she dropped by to buy a halter and stayed to help—she has taught us much about caring and compassion and just how nice people can be); Lauren Munger began as a volunteer at RML, then started to fill in as needed, bought Cody llama, and has been someone who is always there, whatever...her spiritual awareness and maturity have supported all of us whenever times have been tough; Jose Baron has worked with us two years, primarily working in maintenance and upkeep—yet, when Molly became ill—he was the first to be there with a strong back and caring spirit—keeping her bedding clean and her food available and always providing her with gentle love. Through it all, Bobra kept constant care and evaluation going (often spending several sessions a day working with Molly). Until the very end, Bobra determined that Molly was bright and aware and not in pain. And, she was right. All of us experienced a level of intimacy with Molly llama that was special and rare.

In late December when Molly's decline became of concern, Bobra contacted her nephew Michael (a Buddhist teacher - if you ever think your network can be too large—think again). Michael, whose involvement with Buddhism was much more extensive than that of our absentee owners, sent us a thoughtful and intelligent discussion of the situation as his Buddhist tradition dictated. Among his comments, "The Buddhist tradition says that the way to help an animal develop is through lots of warm, friendly, non-neurotic human contact. I do not see how putting an animal down that is in pain would harm its future rebirth." Regardless of one's formal religion or lack thereof, I believe that those of us who attempt to live our lives in an ethical manner do not ever wish to do harm and hope to do good (or contribute positively). Michael also stated, "with an intelligent mammal I loved? Well, my motives would be

# 1998 was a very good year.



**Pheasant  
Hill Farm**  
Llamas

**John and Sharon  
Beacham**

2380 95th Street

Boulder, Colorado

80301-4937

1-800-465-2567 or

303-666-9437 (Denver area)

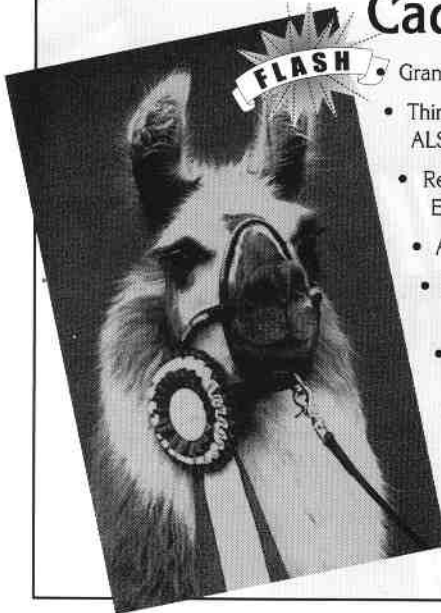
Fax: 303-604-1730

[www.phf-llamas.com](http://www.phf-llamas.com)

Email:

[beachams@phf-llamas.com](mailto:beachams@phf-llamas.com)

## **Cadfael** (\*El Fuerte x \*Cantilena) 3-13-95



- Grand Champion Heavy Wool Male, 1999 NWSS
- Third in a class of 30 Adult Heavy Wool Males  
ALSA Grand National Show
- Reserve Grand Champion Heavy Wool Male  
Estes Park Wool Market and LOCC Fall Classic
- ALSA Recognition of Merit – Halter
- Part of First Place Get of Sire Group:  
NWSS – EPWM – LOCC and Rocky Mountain Regional
- Cadfael's Hallelujah consigned to 1999 Celebrity Sale

***Cadfael can make 1999  
a very good year for you...***

*Available for 6 outside breedings.*

*Several of his 3/4 Peruvian crias for sale.*

*Molly... Cont.*

mixed. Part of me would want to put the animal down- simply because I could not stand his pain, i.e. out of selfish motives. But I imagine my MAIN response would be to terminate his life for HIS BENEFIT. In order to stop the pain and misery in this life. So, with mixed, motives, I would choose what was best for him."

Molly's owners flew from California to see her over Christmas break. They spent time with her and were obviously caring and concerned.... additional natural remedies were tried, without success. Molly's owners eventually read and apparently accepted Michael's discussions and directed Bobra to do what she thought best for Molly. Through a tremendous amount of work and perseverance, the needs of the animal, the owners, and the caretakers were all met. The day after my return from a holiday visit with family, Molly was put down. She waited for all of us to be able to say farewell before she transmitted her readiness to leave this world. When Dr. Tim Thompson examined her, his first comment was that she had given up. Tim helped her go easily and without

pain and we are grateful, as always, that he is here to help and support us.

And so, on this first day of 1999, I am thinking about many things, but mostly about how lucky I have been to have Bobra, Carol, Lauren, Jose, Michael, Tim, MOLLY and SPOOK to help me through this year and to teach me needed lessons. Rocky Mountain Llamas has more aged animals than most farms, but many of you will face decisions regarding euthanizing your llamas in the near future. We are now facing this question with increasing frequency. Be strong and be caring and work, as Bobra did, with the belief that everyone's needs can be met. Michael stated that in Buddhism, "we try to genuinely develop emotions of love and concern and well-wishing." To what more can any of us aspire - with, of course, the help of our llamas, friends, and family.



Rocky Mountain Llamas:

7202 N. 45th St, Longmont, CO 80503 (303)530-5675

<http://www.rockymtllamas.com/>

# THE 1999 NATIONAL WESTERN STOCK SHOW LLAMA SHOW

JANUARY 9TH AND 10TH, 1999

Submitted by: Jerry Dunn • Bear Track Farm • 14550 W. 50th Avenue  
Golden, CO 80403-1707 • 303-217-1129 • e-mail: beartrak@gte.net

---

There were 235 llamas and alpacas with over 300 entries.

The championship trophies were woven table runners created by:  
Mary Hance (Hance Ranch), Marie Hinds (Serendipity Farm), and Karen Kinyon (Double K  
Diamond Llamas) with fiber from the RMLA Fiber Co-op.

The RMLA Fiber Co-op also managed a booth in the llama barn where they sold hand made  
fiber items, spun fiber and demonstrated spinning for the visiting public.

A special thanks to the volunteers and helpers:

Wamsley family (an amazing group of people), Lloyd Wamsley designed the courses for the  
open classes. Louise handled check-in and out, assisted the clerk, and took care of me.

Bob and the boys (Lloyd, Matt and Nick) along with Keith Chamberlain, Bob Kucks, Larry  
Mayo, Ron Baird set up the obstacle courses.

Bart Anderson provided obstacles for the youth.

Ken Gaunt was in charge of the photo contest.

Gate people were Mary Wickman, Ann Bruhn, Bobra Goldsmith, Jim Osmun.

Steve and Kathy London did a little bit of everything.

Heide Kauffman, runner and ribbons.

Sally Rucker, ribbons and clerk's helper.

Dr. Debby Mayo, DVM certified "the boy llamas".

Photographer was Tony Taylor.

Ring stewards, Bob Aue and Diane Solomon.

Jaci Aue, was the additional announcer.

Sharon Beacham made corsages for the judges and ring people.

...and just in case you  
didn't know... Jerry Dunn  
was the Superintendent  
for this event. (Smooth?)  
You bet! Jerry was there!

Judges were:

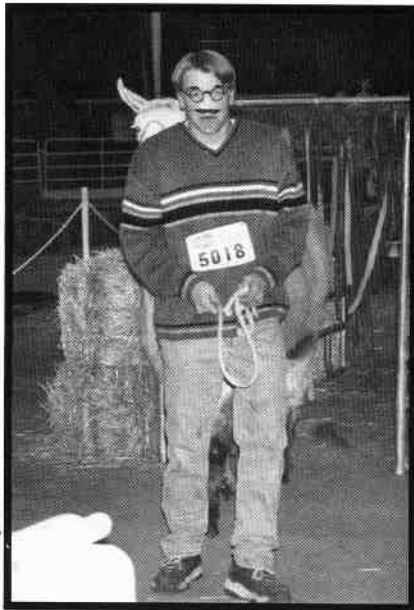
Judy Brock (fiber), Jim Krebs  
(photography), and the arena  
judges were Virginia  
Christensen and Susan Tellez  
with Mark Smith and Jan  
Gordon as apprentices.

The NWSS volunteers helped  
with the courses as well.  
They were every where—  
unloading animals and  
exhibitors, and assisted with  
the overall show cheerfully.  
What a great group!

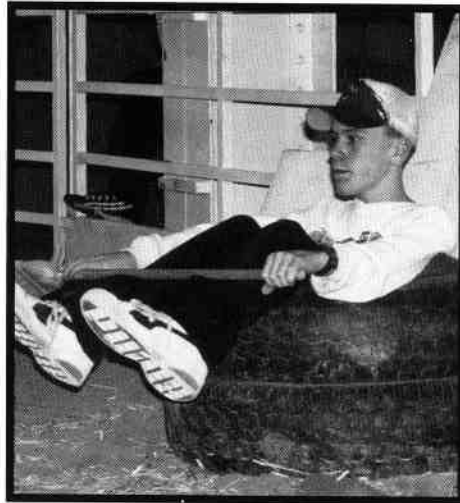


Socializing before dinner on the Friday night.  
L→R; Len Henning, Dale Pettigrew, and the Hartung's.

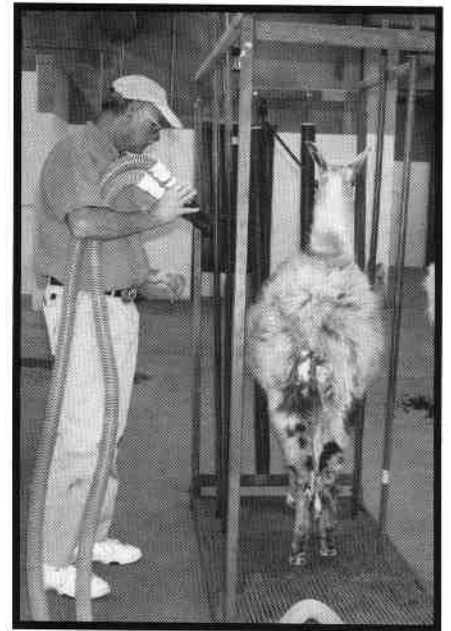
# People and Llamas @ The 1999 NWSS



Ben Riggs on the P.R. Course



Matt Wamsley...  
waiting for the moment.



Ron Baird— Working(?)



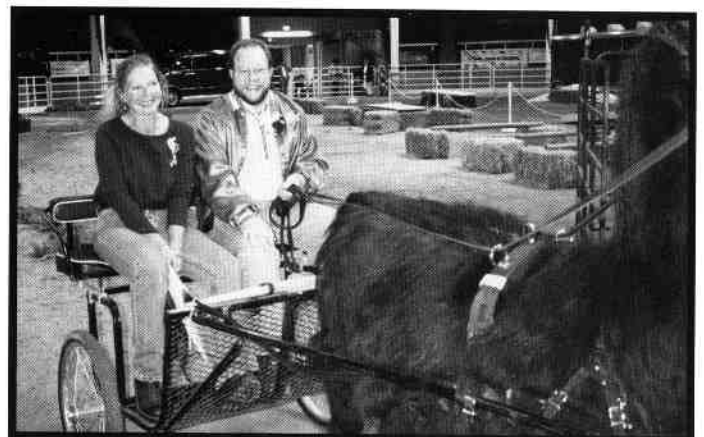
Break time before the show...  
L→R Lanny Coleman, Ben Riggs, Ron Baird, Lorie (?)  
and Lougene Baird.



Judges, Virginia Christensen and Susan Tellez,  
receive a ride into the arena from Batu.



NWSS Volunteers—a great bunch of  
folks.



Judges Judy Brock (Fiber) and Jim Kress (photogra-  
phy) also get a s-m-o-o-t-h ride from Batu.

# The Results of the 1999 NWSS Llama Show

## *Owner/Handler*

## *City/State*

## *Farm/Ranch Name*

### Class L1 - JUNIOR YOUTH OBSTACLE

1st BAIRD, DEIDRE	SEDALIA, CO	PLUM VALLEY LLAMAS
2nd COFFMAN, HALLEY	STORY, WY	CLOUD PEAK LLAMAS
3rd ANDERSON, MATT	PLATTEVILLE, CO	TWIN PEAKS LLAMA FARM
4th LEDALL, CHANDRA	EATON, CO	FIREWEED RANCH
5th SLOTHOWER, JONATHAN	CALHAN, CO	NO MONKEY RANCH
6th BROWN, JENNY	FT COLLINS, CO	MARQUITA RANCH ALPACAS
7th FLAVIN, MICHAEL	CONIFER, CO	SANTA ROSA ALPACAS
8th BOJANOSKI, ELIZABETH	OREELEY, CO	PEACEFUL PRAIRIE ALPACAS
9th KELLER, TORY	FT COLLINS, CO	MARQUITA RANCH ALPACAS
10th ADAMS, KRISTEN	GREELEY, CO	PEACEFUL PRAIRIE ALPACAS

### Class L10 - SHORT STACK (PACK STRING)

1st COFFMAN FLINN, BARBARA	STORY, WY	CLOUD PEAK LLAMAS
2nd REDENBERGER, JAN	GOLDEN, CO	WINDING TRAILS LLAMAS

### Class L11 - PHOTOGRAPHY

1st KNUCKLES, ROBERT	GRAND JUNCTION, CO	TALL TAIL RANCH
2nd DUNN, JERRY	GOLDEN, CO	BEAR TRACK FARM
3rd WALZ, FRED & ANN	LITTLETON CO	WINDRUSH
4th SUMMERS, MARY	PLACITAS, NM	RAINBOW VALLEY LLAMAS
5th WALZ, FRED & ANN	LITTLETON, CO	WINDRUSH
6th MAUZ, WES/MARY	GOLDEN, CO	TIMBERLINE LLAMAS
7th SUMMERS, MARY	PLACITAS, NM	RAINBOW VALLEY LLAMAS
8th KNUCKLES, ROBERT	GRAND JUNCTION, CO	TALL TAIL RANCH
9th BEACHAM, SHARON	BOULDER, CO	HAPPY J RANCH

### CLASS L12 - GRAND AND RESERVE PERFORMANCE CHAMPION (JUNIOR)

1st BAIRD, DEIDRE	SEDALIA, CO	PLUM VALLEY LLAMAS
2nd COFFMAN, HALLEY	STORY, WY	CLOUD PEAK LLAMAS

### CLASS L12 - GRAND AND RESERVE PERFORMANCE CHAMPION (INTERMEDIATE)

1st COFFMAN, TIFFANY	STORY, WY	CLOUD PEAK LLAMAS
2nd GRIMM, HEATHER	GEORGETOWN, CO	GRAND SLAM LLAMAS

### CLASS L12 - GRAND AND RESERVE PERFORMANCE CHAMPION (ADULT)

1st COFFMAN, TIFFANY	STORY, WY	CLOUD PEAK LLAMAS
1st COFFMAN FLINN, BARBARA	STORY, WY	CLOUD PEAK LLAMAS

### CLASS L15 - JUNIOR YOUTH SHOWMANSHIP

1st SCHWARTZ, TARA	SHERIDAN, WY	
2nd BAIRD, DEIDRE	SEDALIA, CO	PLUM VALLEY LLAMAS
3rd VANCE, JACKIE	FLORISSANT, CO	SPLIT ROCK RANCH
4th COFFMAN, HALLEY	STORY, WY	CLOUD PEAK LLAMAS
5th NUCKOLS, ASHLEY	BERTHOUD, CO	
6th FILLMORE, ASHLEY	ELBERT, CO	RED TAIL RIDGE RANCH
7th PETERSON, MICA	FALCON, CO	C&M LLAMAS

CLASS L16 INTERMEDIATE YOUTH SHOWMANSHIP

1st COFFMAN, TIFFANY	STORY, WY	CLOUD PEAK LLAMAS
2nd COLEMAN, LAURA	PEYTON, CO	COLEMAN RANCH
3rd RIGGS, BEN	GOLDEN, CO	
4th BERGENFELD, ADRIENNE	COLORADO SPRINGS, CO	
5th HARTMAN, JENNIFER	BLACKHAWK, CO	ITTY BITTY RANCH
6th SCHWARTZ, CHANDRA	SHERIDAN, WY	WYOMING

CLASS L18 - ADULT NON-BREEDER HALTER

1st KNUCKLES, ROBERT	GRAND JUNCTION, CO	TALL TAIL RANCH
2nd COFFMAN-FLINN, BARBARA	STORY, WY	CLOUD PEAK LLAMAS
3rd LOCKWOOD, SANDRA	CONIFER, CO	LOCKWOOD DREAMST
4th MAUZ, WES/MARY	GOLDEN, CO	TIMBERLINE LLAMAS
5th COLEMAN, LAURA	PEYTON, CO	COLEMAN RANCH
6th HERBOLD, HAROLD/SHARON	COLO SPRINGS, CO	PIKES PEAK WOOLIES

CLASS L19 - GRAND AND RESERVE NON-BREEDER CHAMPION

1st KNUCKLES, JILL	GRAND JUNCTION, CO	TALL TAIL RANCH
2nd COFFMAN FLINN, BARBARA	STORY, WY	CLOUD PEAK LLAMAS

CLASS L2 - INTERMEDIATE YOUTH OBSTACLE

1st COFFMAN, TIFFANY	STORY, WY	CLOUD PEAK LLAMAS
2nd REDENBARGER, TY	GOLDEN, CO	WINDING TRAILS LLAMAS
3rd GRIMM, HEATHER	GEORGETOWN, CO	GRAND SLAM LLAMAS
4th RIGGS, BEN	GOLDEN, CO	
5th HARTMAN, JENNIFER	BLACKHAWK, CO	ITTY BITTY RANCH
6fl KAUFFMAN, DAVID/WILLOW	CASTLE ROCK, CO	DUSTY BRITCHES RANCH
7th BERGENFELD, ADRIENNE	COLORADO SPRINGS, CO	
8th GRIMM, JESSICA	GEORGETOWN, CO	GRAND SLAM LLAMAS
9th SCHWARTZ, CHANDRA	SHERIDAN, WY	WYOMING
10th KAUFFMAN, GRETCHEN	CASTLE ROCK, CO	DUSTY BRITCHES RANCH

CLASS L25 - JUVENILE LIGHT / MEDIUM WOOL HALTER MALES

1st SCHWARTZ, TARA	SHERIDAN, WY	WYOMING
2nd LEE, GERALD	COMMERCE CITY, CO	LLAMA LEE ACRES
3rd KAUFFMAN, DAVID/WILLOW	CASTLE ROCK, CO	DUSTY BRITCHES RANCH
4th VAN ZANDT, M.	BLACK FOREST, CO	TOUCH THE EARTH LLAMAS
5th REYNOLDS, GRETCHEN	GRAND LAKE, CO	MOUNTAIN VALLEY LLAMAS
6th HOLBROOK, ROGER	ELIZABETH, CO	R & D IRON WHEEL RANCH
7th WITTRUP, JACK	FALCON, CO	C & M LLAMAS
8th LEWELLYN, LARRY	LITTLETON, CO	FOOT HILLS LLAMAS
9th O'BRIEN, JONNA	BLACKHAWK, CO	ITTY BITTY RANCH
10th LOCKWOOD, SANDRA	CONIFER, CO	LOCKWOOD DREAM

CLASS L26 - YEARLING LIGHT / MEDIUM WOOL HALTER MALES

1st VANCE, JIM	FLORISSANT, CO	SPLIT ROCK RANCH
2nd BEACHAM, SHARON	BOULDER, CO	HAPPY J RANCH
3rd NUCKOLS, LARRY	BERTHOUD, CO	
4th HERBOLD, HAROLD/SHARON	COLO SPRINGS, CO	PIKES PEAK WOOLIES
5th KAUFFMAN, GRETCHEN	CASTLE ROCK, CO	DUSTY BRITCHES RANCH
6th SODERBERO, CRAIG	BOULDER, CO	
7th LEWELLYN, LARRY	LITTLETON, CO	FOOT HILLS LLAMAS
8fl SCHWARTZ, CHANDRA	SHERIDAN, WY	WYOMING
9th MILLER, ROGER	COLORADO SPRINGS, CO	ESCARPMENT LLAMAS
10th HEGGIE, JULIE	LARAMIE, WY	DOUBLE J LLAMAS

CLASS L27 - 2 YR. OLD LIGHT / MEDIUM WOOL HALTER MALES

1st	SWANSON, TIM	CALHAN, CO	ARROW HEAD LLAMAS
2nd	LEWELLYN, DEANNE	BOULDER, CO	PHEASANT HILL FARM
3rd	SUMMERS, MARY	PLACITAS, NM	RAINBOW VALLEY LLAMAS
4th	HARTUNG, SUZANNE	STEAMBOAT SPGS, CO	RIO ANTE RANCH
5th	TOMPKINS, ROBERT	CHEYENNE, WY	PRAIRIE WIND LLAMAS
6th	LONTINE, CAROL	GOLDEN, CO	D AND C LLAMAS
7th	FLINN, DWAYNE	STORY, WY	CLOUD PEAK LLAMAS
8th	NUCKOLS LARRY	BERTHOUD, CO	

CLASS L28 - ADULT LIGHT / MEDIUM WOOL HALTER MALES

1st	COFFMAN-FLINN, BARBARA	STORY, WY	CLOUD PEAK LLAMAS
2nd	LIVENGOOD, BRIANNA	WESTCLIFFE, CO	LLAMARADO
3rd	O'BRIEN, JONNA	BLACKHAWK, CO	ITTY BITTY RANCH
4th	PRICE, JOAN	FT. MORGAN, CO	J & L LLAMAS
5th	HARDING, CLIFF	HOTCHKISS, CO	HARDING LLAMA RANCH
6th	BAIRD, TERI	ELIZABETH, CO	BROKEN WINDMILL RANCH
7th	GRIMM SUE	GEORGETOWN, CO	GRAND SLAM LLAMAS
8th	MILLER, ROGER	COLORADO SPRINGS, CO	ESCARPMENT LLAMAS

CLASS L29 - GRAND AND RESERVE MALE LIGHT / MEDIUM WOOL CHAMPION

1st	VANCE, JIM	FLORISSANT, CO	SPLIT ROCK RANCH
2nd	COFFMAN-FLINN, BARBARA	STORY, WY	CLOUD PEAK LLAMAS

CLASS L3 - OPEN OBSTACLE

1st	COFFMAN-FLINN, BARBARA	STORY, WY	CLOUD PEAK LLAMAS
2nd	FLINN, DWAYNE	STORY, WY	CLOUD PEAK LLAMAS
3rd	COFFMAN-FLINN, BARBARA	STORY, WY	CLOUD PEAK LLAMAS
4th	ANDERSON, BART	PLATTEVILLE, CO	TWIN PEAKS LLAMA FARM
5th	REDENBARGER, JAN	GOLDEN, CO	WINDING TRAILS LLAMAS
6th	KAUFFMAN, GRETCHEN	CASTLE ROCK, CO	DUSTY BRITCHES RANCH
7th	LEWELLYN, DEANNE	BOULDER, CO	PHEASANT HILL FARM
8th	HERBOLD, HAROLD/SHARON	COLO. SPRINGS, CO	PIKES PEAK WOOLIES
9th	KNUCKLES, JILL	GRAND JUNCTION, CO	TALL TAIL RANCH
10th	HANCE, MARY	WHEAT RIDGE, CO	HANCE RANCH

CLASS L35 - JUVENILE LIGHT / MEDIUM WOOL HALTER FEMALE

1st	WELLER, KATHIE	REDSTONE, CO	RED HAT LLAMA RANCH
2nd	COFFMAN-FLINN, BARBARA	STORY, WY	CLOUD PEAK LLAMAS
3rd	BAIRD, DEIDRE	SEDALIA, CO	PLUM VALLEY LLAMAS
4th	BAIRD, DEIDRE	SEDALIA, CO	PLUM VALLEY LLAMAS
5th	WOODSOM, GAYLE	LARAMIE, WY	DOUBLE J LLAMAS
6th	REDENBARGER, JAN	GOLDEN, CO	WINDING TRAILS LLAMAS
7th	HEGGIE, JULIE	LARAMIE, WY	DOUBLE J LLAMAS
8th	LEE, GERALD	COMMERCE CITY, CO	LLAMA LEE ACRES
9th	HEGGIE, JULIE	LARAMIE, WY	
10th	KNUCKLES, JILL	GRAND JUNCTION CO	TALL TAIL RANCH



CLASS L36 - YEARLING LIGHT / MEDIUM WOOL HALTER FEMALE

1st FAUSSONE, JANINE	LOMA, CO	LOMA LLAMAS
2nd COFFMAN-FLINN, BARBARA	STORY, WY	CLOUD PEAK LLAMAS
3rd WOODSOM, GAYLE	LARAMIE, WY	DOUBLE J LLAMAS
4th WALKER TOMPKINS, DIANE	CHEYENNE, WY	PRAIRIE WIND LLAMAS
5th PFRANGLE, KERBY/LOUIS	WORLAND, WY	PFOUR PFRANGLE LI,A
6th LEE, GERALD	COMMERCE CITY, CO	LLAMA LEE ACRES
7th HEGGIE, JULIE	LARAMIE, WY	DOUBLE J LLAMAS
8th WALZ, FRED & ANN	LITTLETON, CO	WINDRUSH
9th ANDERSON, CATHERINE	CHEYENNE, WY	CACTUS RANCH LLAMAS

CLASS L37 - 2 YEAR OLD LIGHT / MEDIUM WOOL HALTER FEMALE

1st CLOUCH, CHENEY	CRAWFORD, CO	NEEDLE ROCK WOOLS
2nd BAIRD, TERI/PHIL	ELIZABETH, CO	BROKEN WINDMILL RANCH
3rd BAIRD, TERI/PHIL	ELIZABETH, CO	BROKEN WINDMILL RANCH
4th GRIMM, SUE	GEORGETOWN, CO	GRAND SLAM LLAMAS

CLASS L38 - ADULT LIGHT / MEDIUM WOOL HALTER FEMALE

1st CLOUCH, CHENEY	CRAWFORD, CO	NEEDLE ROCK WOOLS
2nd WITTRUP, MARK/CATHY	FALCON, CO	C&M LLAMAS

CLASS L39 GRAND AND RESERVE LIGHT / MEDIUM WOOL FEMALE CHAMPION

1st FAUSSONE, JANINE	LOMA, CO	LOMA LLAMAS
2nd COFFMAN-FLINN, BARBARA	STORY, WY	CLOUD PEAK LLAMAS

CLASS L4 - JUNIOR YOUTH PUBLIC RELATIONS (AGE 8-18)

1st ANDERSON, MATT	PLATTEVILLE, CO	TWIN PEAKS LLAMA FARM
2nd FLAVIN, MICHAEL	CONIFER, CO	SANTA ROSA ALPACAS
3rd BAIRD, DEIDRE	SEDALIA, CO	PLUM VALLEY LLAMAS
4th VANCE, JACKIE	FLORISSANT, CO	SPLIT ROCK RANCH
5th COFFMAN-FLINN, BARBARA	STORY, WY	CLOUD PEAK LLAMAS
6th SCHWARTZ, TARA	SHERIDAN, WY	WYOMING
7th O'BRIEN, HANNA	BLACKHAWK, CO	ITTY BITTY RANCH
8th PETERSON, MICA	FALCON, CO	C&M LLAMAS
9th FILLMORE, ASHLEY	ELBERT, CO	RED TAIL RIDGE RANCH

CLASS L45 - JUVENILE HEAVY WOOL HALTER MALE

1st WILLIAMS, COLLEEN	GRAND ISLAND, NE	DOC'S LLAMAS
2nd MURPHY, KIM	DIVIDE, CO	BITTER CREEK LLAMAS
3rd HARTSOUGH, MARY & JOE	PLATTEVILLE, CO	LLAMARAGE
4th BYERS, ALAINE	LONGMONT, CO	GINGER ROCK FARM
5th SEALY, JUDITH	GRAND JUNCTION, CO	GRAND VALLEY LLAMAS
6th ROGERS, KEN/LUCY	DIVIDE, CO	WORLD CLASS FARMS
7th HARDING, CLIFF	HOTCHKISS, CO	HARDING LLAMA RANCH
8th KAUFFMAN, GRETCHEN	CASTLE ROCK, CO	DUSTY BRITCHES RANCH
9th MAUZ, WES/MARY	GOLDEN, CO	TIMBERLINE LLAMAS
10th WITTRUP, JACK	FALCON, CO	C&M LLAMAS

CLASS L46 - YEARLING HEAVY WOOL HALTER MALE

1st MAUZ, WES/MARY	GOLDEN, CO	TIMBERLINE LLAMAS
2nd MURPHY, KIM	DIVIDE, CO	BITTER CREEK LLAMAS
3rd ROGERS, KEN/LUCY	DIVIDE, CO	WORLD CLASS FARMS
4th REYNOLDS, GRETCHEN	GRAND LAKE, CO	MOUNTAIN VALLEY LLAMAS
5th HARRIS, BARBARA	CANON CITY, CO	WILD CAT LLAMAS
6th KNUCKLES, ROBERT	GRAND JUNCTION, CO	TALL TAIL RANCH
7th HEGGIE, JULIE	LARAMIE, WY	DOUBLE J LLAMAS
8th GRIMM, SUE	GEORGETOWN, CO	GRAND SLAM LLAMA RANCH
9th TSAKOPULOS, TOM	LARKSPUR, CO	EARS TO YOU LLAMA RANCH
10th LEWELLYN, LARRY	LITTLETON, CO	FOOT HILLS LLAMAS

CLASS L47 - 2 YEAR OLD HEAVY WOOL HALTER MALE

1st SWANSON, TIM	CALHAN, CO	ARROW HEAD LLAMAS
2nd MURPHY, KIM	DIVIDE, CO	BITTER CREEK LLAMAS
3rd MURPHY, DICK	DIVIDE, CO	BITTER CREEK LLAMAS
4th CLOUCH, CHENEY	CRAWFORD, CO	NEEDLE ROCK WOOLS
5th REYNOLDS, GRETCHEN	GRAND LAKE, CO	MOUNTAIN VALLEY LLAMA
6th GRIMM, SUE	GEORGETOWN, CO	GRAND SLAM LLAMA RANCH
7th CLOUCH, CHENEY	CRAWFORD, CO	NEEDLE ROCK WOOLS

CLASS L48 - ADULT HEAVY WOOL HALTER MALE

1st BEACHAM, SHARON	BOULDER, CO	PHEASANT HILL FARM
2nd MURPHY, KIM	DIVIDE, CO	BITTER CREEK LLAMAS
3rd WITTRUP, JACK	FALCON, CO	C&M LLAMAS
4th VAN ZANDT	BLACK FOREST, CO	TOUCH THE EARTH LLAMAS

CLASS L49 - GRAND AND RESERVE HEAVY WOOL MALE CHAMPION

1st BEACHAM, SHARON	BOULDER, CO	PHEASANT HILL FARM
2nd MURPHY, DICK & KIM	DIVIDE, CO	BITTER CREEK LLAMAS

CLASS L5 - INTERMEDIATE YOUTH PUBLIC RELATIONS

1st GRIMM, HEATHER	GEORGETOWN, CO	GRAND SLAM LLAMA RANCH
2nd BERGENFELD, ADRIENNE	COLO SPRINGS, CO	
3rd COFFMAN, TIFFANY	STORY, WY	CLOUD PEAK LLAMAS
4th RIGGS, BEN	GOLDEN, CO	
5th REDENBARGER, TY	GOLDEN, CO	WINDING TRAILS LLAMAS
6th HARTMAN, JENNIFER	BLACKHAWK, CO	ITTY BITTY RANCH
7th SCHWARTZ, CHANDRA	SHERIDAN, WY	WYOMING
8th KAUFFMAN, GRETCHEN	CASTLE ROCK, CO	DUSTY BRITCHES RANCH
9th KAUFFMAN, LEVI	CASTLE ROCK, CO	DUSTY BRITCHES RANCH
10th COLEMAN, LAURA	PEYTON, CO	COLEMAN RANCH

CLASS L55 - JUVENILE HEAVY WOOL HALTER FEMALE

1st HARTSOUGH, MARY & JOE	PLATTEVILLE, CO	LLAMARAGE
2nd ROGERS, KEN	DIVIDE, CO	WORLD CLASS FARMS
3rd ROGERS, KEN	DIVIDE, CO	WORLD CLASS FARMS
4th BYERS, ALAINE	GARLAND, NE	RTC LLAMA RANCH
5th REYNOLDS, GRETCHEN	GRAND LAKE, CO	MOUNTAIN VALLEY LLAMAS
6th PETTIGREW, DALE/MIKE	LIVERMORE, CO	OVERLAND TRAIL LLAMAS
7th KNUCKLES, JILL	GRAND JUNCTION, CO	TALL TAIL RANCH
8th HOUSEMAN, BOB	DIVIDE, CO	LLA-MIRAGE LLAMAS
9th HOUSEMAN, BOB	DIVIDE, CO	LLA-MIRAGE LLAMAS
10th HEGGIE, JULIE	LARAMIE, WY	DOUBLE J LLAMAS

CLASS L56 - YEARLING HEAVY WOOL HALTER FEMALE

1st	ROGERS, KEN/LUCY	DIVIDE, CO	WORLD CLASS FARMS
2nd	REDENBARGER, JAN	GOLDEN, CO	WINDING TRAILS LLAMAS
3rd	MURPHY, KIM	DIVIDE, CO	BITTER CREEK LLAMAS
4th	MURPHY, KIM	DIVIDE, CO	BITTER CREEK LLAMAS
5th	MURPHY, KIM	DIVIDE, CO	BITTER CREEK LLAMAS
6th	SNAKENBERG, BARBARA	BROOMFIELD, CO	SHILO RIDGE LLAMAS
7th	REYNOLDS, GRETCHEN	GRAND LAKE, CO	MOUNTAIN VALLEY LLAMAS
8th	HACKBART, DAVE	GRAND ISLAND, NE	DOC'S LLAMAS
9th	MURPHY, DICK	DIVIDE, CO	BITTER CREEK LLAMAS
10th	COFFMAN FLINN, BARBARA	STORY, WY	CLOUD PEAK LLAMAS

CLASS L57 - 2 YEAR OLD HEAVY WOOL HALTER FEMALE

1st	MURPHY, DICK & KIM	DIVIDE, CO	BITTER CREEK LLAMAS
-----	--------------------	------------	---------------------

CLASS L59 - GRAND AND RESERVE HEAVY WOOL HALTER FEMALE

1st	ROGERS, KEN/LUCY	DIVIDE, CO	WORLD CLASS FARMS
2nd	HARTSOUGH, MARY & JOE	PLATTEVILLE, CO	LLAMARAGE

CLASS L6 - OPEN PUBLIC RELATIONS

1st	FLINN, DWAYNE	STORY, WY	CLOUD PEAK LLAMAS
2nd	COFFMAN FLINN, BARBARA	STORY, WY	CLOUD PEAK LLAMAS
3rd	ANDERSON, BART	PLATTEVILLE, CO	TWIN PEAKS LLAMA FARM
4th	COFFMAN, TIFFANY	STORY, WY	CLOUD PEAK LLAMAS
5th	HERBOLD, HAROLD/SHARON	COLORADO SPRINGS, CO	PIKES PEAK WOOLIES
6th	BEACHAM, SHARON	BOULDER, CO	HAPPY J RANCH
7th	LEWELLYN, DEANNA	BOULDER, CO	PHEASANT HILL FARM
8th	HANCE, MARY	WHEAT RIDGE, CO	HANCE RANCH
9th	KNUCKLES, JILL	GRAND JUNCTION, CO	TALL TAIL RANCH
10th	LIVENGOOD, BRIANNA	WESTCLIFFE, CO	LLAMARADO

CLASS L65 - PRODUCE OF DAM

1st	ROGERS, KEN	DIVIDE, CO	WORLD CLASS FARMS
2nd	CLOUCH, CHENEY	CRAWFORD, CO	NEEDLE ROCK WOOLS
3rd	WALKER TOMPKINS, DIANE	CHEYENNE, WY	PRAIRIE WIND LLAMAS
4th	LEWELLYN, LARRY	LITTLETON, CO	FOOT HILLS LLAMAS

CLASS L66 - GET OF SIRE

1st	ROGERS, KEN/LUCY	DIVIDE, CO	WORLD CLASS FARMS
2nd	LYNCH, TERRY	LONGMONT, CO	GINGER ROCK FARM
3rd	CLOUCH, CHENEY	CRAWFORD, CO	NEEDLE ROCK WOOLS
4th	LEE, GERALD	COMMERCE CITY, CO	LLAMA LEE ACRES

CLASS L7 - OPEN PACK LLAMA

1st	COFFMAN, TIFFANY	STORY, WY	CLOUD PEAK LLAMAS
2nd	COFFMAN FLINN, BARBARA	STORY, WY	CLOUD PEAK LLAMAS
3rd	ANDERSON, BART	PLATTEVILLE, CO	TWIN PEAKS LLAMA FARM
4th	REDENBARGER, JAN	GOLDEN, CO	WINDING TRAILS LLAMAS
5th	LEWELLYN, LARRY	LITTLETON, CO	FOOT HILLS LLAMAS
6th	KNUCKLES, JILL	GRAND JUNCTION, CO	TALL TAIL RANCH
7th	MAUZ, WES/MARY	GOLDEN, CO	TIMBERLINE LLAMAS
8th	KEERAN, MATT	BLACKHAWK, CO	ITTY BITTY RANCH

CLASS L75 - LLAMA FIBER

- 1st GRIMM, HEATHER
- 2nd VAN ZANDT
- 3rd SWANSON, TIM
- 4th GRIMM, HEATHER
- 5th HANCE, BOB & BARBARA
- 6th WEGNER, KEITH
- 7th MATTKE, LAURIE
- 8th WEGNER, KEITH
- 9th HINDS, RON & MARIE

- GEORGETOWN, CO
- BLACK FOREST, CO
- CALHAN, CO
- GEORGETOWN, CO
- WHEAT RIDGE, CO
- GOLDEN, CO
- WATKINS, CO
- GOLDEN, CO
- ELIZABETH, CO

- GRAND SLAM LLAMA RANCH
- TOUCH THE EARTH LLAMA
- ARROW HEAD LLAMAS
- GRAND SLAM LLAMA RANCH
- HANCE RANCH
- K2 LLAMAS
- LOST BOYS RANCH LLAMAS
- K2 LLAMAS
- SERENDIPITY FARM

CLASS L8 - INTERMEDIATE YOUTH PACK LLAMA

- 1st COFFMAN, TIFFANY
- 2nd GRIMM, HEATHER
- 3rd BERGENFELD, ADRIENNE
- 4th REDENBARGER, TY
- 5th KEERAN, MATT
- 6th RIGGS, BEN
- 7th SCHWARTZ, CHANDRA
- 8th GRIMM, JESSICA
- 9th KAUFFMAN, GRETCHEN
- 10th KAUFFMAN, LEVI

- STORY, WY
- GEORGETOWN, CO
- COLORADO SPRINGS, CO
- GOLDEN, CO
- BLACKHAWK, CO
- GOLDEN, CO
- SHERIDAN, WY,
- GEORGETOWN, CO
- CASTLE ROCK, CO
- CASTLE ROCK, CO

- CLOUD PEAK LLAMAS
- GRAND SLAM LLAMA RANCH
- WINDING TRAILS LLAMAS
- ITTY BITTY RANCH
- WYOMING
- GRAND SLAM LLAMA RANCH
- DUSTY BRITCHES RANCH
- DUSTY BRITCHES RANCH

CLASS L8J - JUNIOR YOUTH PACK LLAMA

- 1st COFFMAN FLINN, BARBARA
- 2nd BAIRD, DEIDRE
- 3rd VANCE, JACKIE
- 4th O'BRIEN, HANNAH
- 5th ANDERSON, MATT
- 6th PETERSON, MICA

- STORY, WY
- SEDALIA, CO
- FLORISSANT, CO
- BLACKHAWK, CO
- PLATTEVILLE, CO
- FALCON, CO

- CLOUD PEAK LLAMAS
- PLUM VALLEY LLAMAS
- SPLIT ROCK RANCH
- ITTY BITTY RANCH
- TWIN PEAKS LLAMA FARM
- C&M LLAMAS

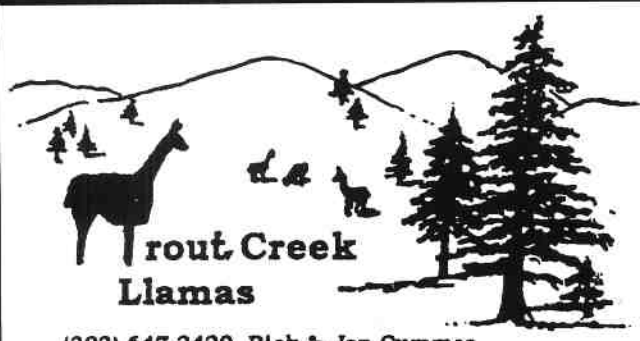
CLASS L9 - YOUNG PACK LLAMA

- 1st FLINN, DWAYNE
- 2nd SUMMERS, MARY
- 3rd BEACHAM, SHARON
- 4th KNUCKLES, ROBERT
- 5th LEWELLYN, LARRY

- STORY, WY
- PLACITAS, NM
- BOULDER, CO
- GRAND JUNCTION, CO
- LITTLETON, CO

- CLOUD PEAK LLAMAS
- RAINBOW VALLEY LLAMAS
- PHEASANT HILL FARM
- TALL TAIL RANCH
- FOOT HILLS LLAMAS

More National Western Show on next page...



**Trout Creek Llamas**  
 (303) 647-2429 Rick & Jan Cummer



**SUNSHINE ACRES**  
 COLORADO TEXAS  
**LLAMAS**  
*Evo Domatti*

143 Ranger Station Road  
 Florissant, Colorado 80816  
 Phone (719) 748-3247  
 Fax (719) 748-0105

29015 Elmwood Drive  
 Spring, Texas 77381  
 Phone: (281) 367-6166  
 Fax: (281) 367-6169

Mark your calendar, next year's National Western will be on January 8th and 9th, 2000.  
 You need a NWSS premium book to enter? Call 303-297-1166.... or visit their web site at, yep you guessed it: <http://www.nationalwestern.com>

# 1999 NATIONAL WESTERN STOCK SHOW LLAMA SHOW CHAMPIONSHIP TROPHY SPONSORS and WINNERS



- Junior Performance—*Sponsored by BEAR TRACK FARM—Jerry Dunn*  
Champion: Deidre Baird                      Reserve: Halley Coffman



- Intermediate Performance —*Sponsored by BEAR TRACK FARM—Jerry Dunn*  
Champion: Tiffany Coffman                      Reserve: Heather Grimm



- Adult Performance—Sponsored by **ROCKY MOUNTAIN LLAMA & ALPACA ASSOCIATION**

Champion: TINY TIM TOO —  
Tiffany Coffman

Reserve:  
CLOUD PEAK'S TOP BANANA—  
Barbara Coffman



- Non-Breeder—Sponsored by **BUCKHORN LLAMA COMPANY**—Stan Ebel

Champion: SOCKS—  
Bob Knuckles—Tall Tail Ranch

Reserve: CLOUD PEAK'S BETA  
CENTAURI—Barbara Coffman



• Light / Medium Wool Male—*Sponsored by P/M LLAMAS—Pat and Maury Cox*  
 Champion: STAGE STOP MIDNIGHT HOUR  
 Jim Vance— Split Rock Ranch

Reserve: CLOUD PEAK'S TOP  
 BANANA- Barbara Coffman



• Light / Medium Wool Female—

*Sponsored by K2 LLAMAS—Keith and Katy Wegner*

Champion: LOMA'S NIKITA -  
 Janine Fausson -Loma Llamas

Reserve: LRL CRYSTAL  
 Barbara Coffman



• Heavy Wool Male—*Sponsored by STILLWATER MINERALS-Bob and Jo Riley*  
 Champion: CADFAEL—  
 Sharon & John Beacham  
 Pheasant Hill Farm

Reserve: DDL KNIGHT FLIGHT—  
 Dick and Kim Murphy  
 Bitter Creek



• Heavy Wool Female—  
*Sponsored by PRICE LLAMA FARM-Terry and Kathy Price*  
 Champion:  
 GULLIVER'S LANDSLIDE—  
 Ken & Lucy Rogers  
 World Class Farms

Reserve:  
 LLAMARAGE'S MOONSHINE—  
 Mary Beth & Jo Hartsough  
 Llamarage





• Produce of Dam — *Sponsored by LAZY B LLAMAS—Bruce and Gay Ellis*

Champion: E. R. OKARINA—  
Ken & Lucy Rogers  
World Class Farms

• Get-of-Sire—  
*Sponsored by BETTY ROBERTSON*

Champion:  
HBL GULIVER—  
Ken & Lucy Rogers  
World Class Farms



• Llama Fiber—

*Sponsored by PIKES PEAK WOOLIES—Sharon and Harold Herbold*

1st—DLLC UNION'S GRANT— Heather Grimm—Grand Slam Llamas

2nd-TOUCH THE EARTH VIEJITO— Marlice Van Zandt — Touch the Earth Llamas

3rd-CHAMP RTC — Tim & Debra Swanson — Arrow Head Llamas

4th-THE GREAT MR. MUTUMBO— Heather Grimm — Grand Slam Llamas

5th-SILKY JOE— Bob & Barbara Hance — Hance Ranch

6th-COLOLAMA'S PEACH FIZZ— Keith & Katy Wegner — K2 Llamas

7th-EBONY CACET— Laurie Mattke — Lost Boys Ranch

8th-LLAMARAGE'S TAILWIND— Keith & Katy Wegner — K2 Llamas

9th-ASHLAN— Ron & Marie Hinds — Serendipity Farm

*The End...  
see you next year!*



# How to Stage a Youth Judging Contest

Ron Baird • Plum Valley Llamas • 2210 Pine Wood Road • Sedalia, CO 80135 • 303-688-5445 • 303-688-6814 fax

The ALSA Youth Judging program was new in 1998. It is designed to give youth experience in evaluating lama conformation, showmanship, and obstacle performance. From a parent's viewpoint, the program helps our youth develop an eye for good llamas, improves their showmanship and performance class skills, and helps them develop skills that can be used today in school and tomorrow in their life endeavors.

Putting on a Youth Judging Contest is simple and easy if you follow a few steps. This activity does not have to be associated with a show - it can be free-standing, done within a 4-H youth group, a county-wide contest, and so forth. The Judge must be a qualified ALSA Judge for the contest to count for ALSA youth participants.

To qualify a participant to compete in ALSA-sanctioned shows, the youth must be a member of ALSA and the ALSA youth Judging program. This costs \$20.00 per year for the two memberships. A Youth Judging Manual is sent the participant the first year and in subsequent years if the manual is changed or updated. The manual closely follows the ALSA judges' program, giving insight into conformation structure and soundness for halter judging, showmanship techniques and patterns, and obstacle course scoring.

The elements of the contest are three to four classes; one or two in halter, one in showmanship, and one obstacle course. Each class needs to have four animals and four handlers. For the halter classes, the animals must be of the same sex, age division, and wool classification. This helps insure that contestants are not misled by the appearance of one animal being larger than another, more woolly, etc.

While the animals and handlers can be the same for the three classes - halter, obstacle, and showmanship - it is more fun for the exhibitors handling the animals and the contestants if different people and animals can be used. In showmanship, it can create more of a challenge if there is a really good showperson, two average showpeople, and one very poor. In this way, the youth contestants can get a better perspective of each handler's capabilities and judge them more correctly. The same applies to the obstacle course.

As youth judges become more adept, it can be interesting to mix up the handlers' assignments. Take a known, very capable and qualified obstacle contestant and have him deliberately do things incorrectly. The same technique in showmanship applies - have a very good showperson do tasks incorrectly. This not only teaches the contestants to rely only on what they are seeing in the ring at that time (and not what they know from past performances by the handlers and animals), but also provides a bit of comic relief in what otherwise can be a tense learning situation.

The official Judge places the classes 1 through 4. The contestants' scores are compared to those of the official Judge. Placements are based upon how closely the contestants' scores compare to the official Judge's.


These youth judging contests are:

- fun
- great learning and teaching experiences and skill sharpeners!

*continued...*



Ron & Marie Hinds  
38620 County Road 29  
Elizabeth, CO 80107-8702  
(303) 646-2665 Voice  
(303) 646-2654 Fax  
800-576-1799 Sales and emergencies  
Internet  
sdflama@bewellnet.com  
<http://serendipityfarm.com>  
Breeding,  
Sales, Fiber &  
Boarding



**Jan Day**  
HC 77, Box 33  
Laguna, N.M. 87026  
505-836-2805



## Llama Elderhostel Again Scheduled at Pingree Park!!

*By Karen R. Kinyon • Double K Diamond Llamas • 2933 E. Mulberry • Ft. Collins, CO  
80524 • 970-484-6241 e-mail: doublekdiamond@juno.com*

---

We are very pleased to announce that the Llama Elderhostel was so successful in '98 that it will again be scheduled at Pingree Park in '99.

This year it will be expanded to two weeks!! July 18-24 will be spent in Spinning and Weaving with Llama and Alpaca. July 25-31 will feature packing with llamas, shearing, new-born care and making llama felt hats. Elderhostels are open to individuals over 50 throughout the world. Pingree Park is located west of Fort Collins on Highway 14 and is part of the Colorado State University program. Volunteers are needed to help during both sessions. If you would like to help with any of the above topics, please contact Karen Kinyon at (970) 484-6241. This is another wonderful opportunity to promote llamas and alpacas and the ways we enjoy them.

To put on a contest, a few simple things are needed. Any person can do one of these events for youth in their area and succeed with only a little thought and effort. It is the preparation beforehand that makes one of these contests work well and with fun for everyone - the organizers, contestants, exhibitors, and Judge.

- 1.) Obtain a Judge.

# Research Committee Report

By Ron Baird • Plum Valley Llamas • 2210 Pine Wood Road • Sedalia, CO 80135-8444 • 303-688-5445  
Reviewed by Bruce Ellis • Lazy B Llamas • 10725 E. Camelot Dr. • Franktown, CO 80116-9471 • 303-688-9466

The RMLA Research Committee has been considering various proposals for funding. Among these is the formation, jointly with another organization, of a lama death record depository. The purpose of this long-term project would be to more accurately determine the cause of death (i.e., old age, rattlesnake bite, trailer accident, heat stress, etc.). This in turn would allow the llama industry to more efficiently allocate its expenditures of research monies toward those studies that have practical benefit to owners and their care providers.

The current status of the llama herd in North America should be a reason for the entire industry to reflect on the efficient expenditure of funds, particularly in the area of medical research. Many owners are experiencing low prices for their animals and some, in fact, are not breeding their herds. As a result, we do not believe studies on improving fertility have merit at this juncture. Similar examples can easily be identified.

On the other hand, the entire herd is getting older. There is a decided lack of information available on the care of geriatric llamas - in particular geldings and females. Some of us are going to extraordinary lengths to care for our older animals - a certain sign of the love and respect we have for them. We believe research into the practical problems facing the industry - an aging loved population of animals, the problems peculiar to gelded males, dealing with the insidious effects of heat stress - these merit the expenditure of research dollars.

It was gratifying to learn the U.S.A.H.A., after prudent consideration of the facts, decided not to include llamas in its study of Johnes Disease in ruminants. We feel this is a significant acknowledgement by this prestigious body that llamas, unlike possibly other ruminant animals, pose little if any likelihood of harboring this disease. This confirms the major effort put forth by the llama industry, led by the Canyonlands Task Force and RMLA, to fight the ban imposed on llamas by Canyonlands National Park. The U.S.A.H.A. action, however, should not be taken as the last word in the matter, particularly as there are still circulating (and in fact being funded) proposals to study the disease in llamas. It is our feeling that any funding of such efforts flies in the face of the diligent work put forth by the Canyonlands Task Force on behalf of the entire industry.

Therefore, RMLA will be carefully picking and choosing the research proposals to which members' funds will be applied. Due to the unique manner in which industry funding is applied to projects, it may be necessary to step outside the pattern followed by RMLA in recent years and directly fund projects of our choosing.



**Owners**  
Robert & Barbara Hance  
11818 W. 52nd Ave.  
Wheat Ridge, CO 80033  
(303) 422-4681

**Manager**  
Mary Hance  
11855 W. 52nd Ave.  
Wheat Ridge, CO 80033  
(303) 422-3568 FAX (303) 467-3261  
hancelama@att.net

ALPACAS

FIBER

LLAMAS



MARK & RACHEL  
HENDRICKSON

*"Huggable Investments in  
Animals, Fleece and Fashion"*

HEARTLAND RANCH, L.L.C  
1-800-4MY-ALPACA

HC 1, Box 374 • ELGIN, ARIZONA 85611-9726  
(520) 455-5701 • FAX (520) 455-9215  
E-MAIL: heartland@dakotacom.net

# Get the Spirit



Remember me? I'm *Andean Spirit*..

★★★ ALSA Supreme Champion

★★ ALSA Grand Champion

★ ALSA Performance Champion

As well as Halter, Get of Sire, Obstacle and PR.

Exquisite fleece— Average 24.66 microns

★★★ I can add champions to your herd.

★★ Taking breeding reservations for 1999.

★ Make your year 2000 one to remember!

---

Live Birth Guarantee • Multiple breeding discount

*My folks can take me to your ranch!*

## Shiloh Ranch

John McCullough, ALSA Judge

P.O. Box 1558

Ruidoso Downs, NM 88346

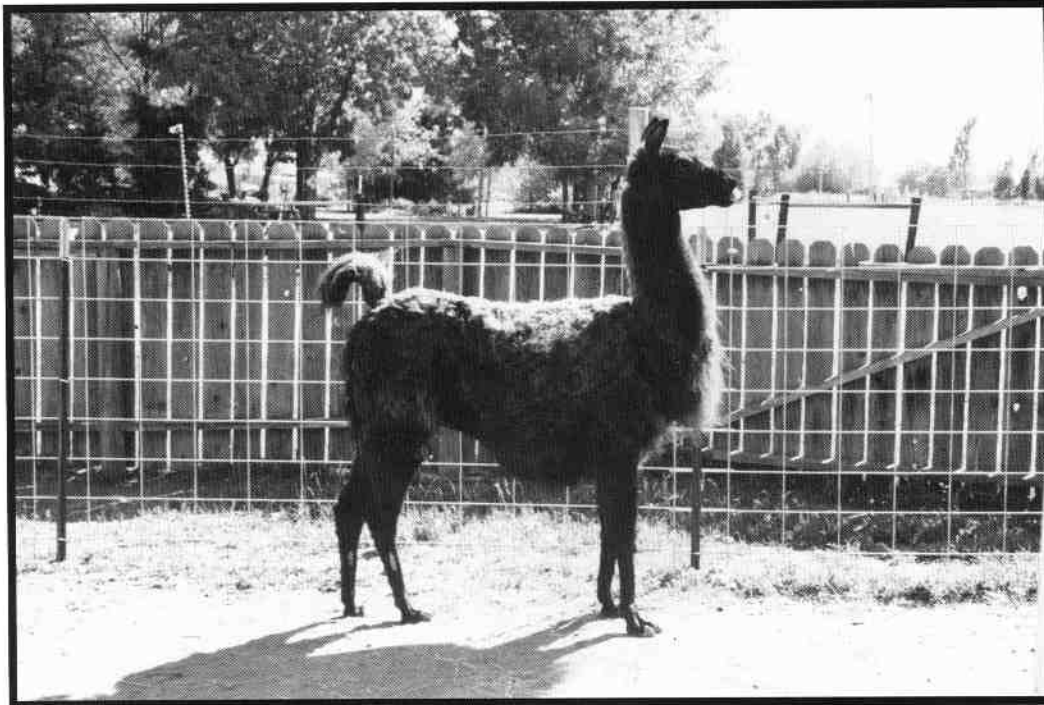
888-733-6468

# FOR THE LOVE OF LINUS

By Lynley A. Nichol, COLORADO LLAMA RESCUE, 12925 Linda Vista Dr. • Longmont, CO 80501 • 303-684-6443

**I**t was a warm, sunny day in September. I patiently waited in the barnyard for the arrival of a gelding of unknown age named Linus. His owner had kept him all alone for the past two years, since his other llama had died of unknown causes. Linus was all alone in the world, wearing a mini horse halter and dragging a 20 foot stake line. He was permitted no hay and no grazing, but instead was fed a pelleted diet not designed for a ruminant's compartmental stomach. His neighbors, Diane and Roger had been trying to get the owner of

introduced to Diane and Roger, I was surprised to find that the owner had come along. I pleasantly shook his hand and showed the proper appreciation for his bringing the llama to me. However, when I opened the trailer door, it took every ounce of my self control not to berate the man, for virtually hog tied inside the trailer was the sweetest, little, underfed black llama! I asked why he was tied up in such a fashion, and the man's reply was "Well, he might get away. I couldn't imagine why he would want to get away except perhaps to save himself from one of



Linus after he was shorn, the day after he arrived at CLR.

the llama to give him to a home where he would have a life. A life which included freedom from a halter and stake line, hay and some llama company. The greedy owner insisted that he had to have money for the llama. When Roger called, I told him to let the owner know that if he donated the llama to Colorado Llama Rescue, he would get a receipt for a tax deductible donation for the market value of the llama. The owner agreed and arrangements were made for Linus to be delivered to CLR by Diane and Roger.

the rottenest llama owners that I had ever had the misfortune to meet! I untied the mess Linus was in, put him in what I affectionately refer to as my "Senior Center" and began to remove his halter with Roger's help. As we were trying to remove the halter, a difficult task since it had been on his head for at least 10 years, the owner said to us "You had better leave that on." While it was on the tip of my tongue to tell the owner exactly what I thought he had better do, I instead focused on the task of getting the poor little fellow freed. When it was removed, Roger whispered to me that he had never seen Linus without both the

When the rig pulled into the barnyard and I was

halter and the stake line. Never have I seen a llama feel so good! He shook his head and dove into the grass hay! It was apparent by the indentation on his nose, that he had virtually grown up in a halter! My heart broke all over again when I found out that Linus was 13 years old.

Linus blended in with my herd of females and geldings. He was sweet and gentle and didn't seem to have an enemy in the bunch. I loved watching him dive into the hay and minerals with such gusto. It always brought a tear to my eye to see his undying gratitude for all of the things that every llama should have all of it's life. He was one of my very favorites. Linus was the type of llama that makes a person fall in love with llamas. He could always be counted on to make a person smile. Solid black with white upper lips, my husband, Jeff and I affectionately referred to him as our little Charlie Chaplin.

In January, five months after Linus's arrival, I received a call from a couple in Parker, Colorado. They were being gifted a barren female and wanted to get some llama company for her. I felt as if they had really done their homework and wanted to do the right thing by their new girl by getting another llama for her.

The adopters (names will be withheld) arrived a week later and chose a geriatric female and Linus. Since they were new to llamas, I felt like these two were a good choice as the llamas were both gentle and easy to handle. I felt the adopters would do right by them and see both Linus and Torres through their sunset years. We arranged to deliver them in a week, the same day that their other female was being delivered.

The day came. As usual, I felt a hole in my heart to be losing these two wonderful creatures. But, I didn't want to be selfish. I wanted these people to have sweet, gentle llamas. So, I choked back the tears and Jeff and I took them to Parker. Basanti (the other female) had already arrived and was very happy to see Linus and Torres exit our trailer. It seemed a very good mix. I had been down to their place the week before to do a home check, something that I

require before I finalize an adoption. Since that time, the gentleman had done all the repairs, etc. that I had suggested. The place looked great, the llamas got along and we had a fun afternoon watching them and having lunch. I left in high spirits and feeling like I had accomplished exactly what I had intended to accomplish when I started my non-profit corporation, Colorado Llama Rescue, in 1996. I had rescued Linus and Torres (not to mention many others), and had placed them in a new and loving home.

The man called often the first week with questions and little stories about what the three llamas were up to. I loved it! Until, two weeks later when he called and said that Linus was sick. He said that Linus had been acting like he had a stomach ache and he had observed him "a few days ago" straining over a manure pile and having no bowel movement. I told him to get the Vet out immediately. I had left my Vet's name and number with him, but he chose to use another, less experienced llama Vet. He called me back later and told me that the Vet felt like Linus was fine, just stressed from the move. She gave him a shot of what I presume was Banamine and also a prescription for Carafate pills to be added to his grain. The man had been told by me to give the llamas just a small handful of grain a couple of times a day, but no more than that as it could make them ill. Instead he had been giving Linus five to six large handfuls each time he was out in the corral. When I asked why he had done it, he said "Because it was so cute the way he would follow me around." I let him know that he could kill a llama that way. The Vet knew about the over graining and yet she still suggested that Linus be put on Carafate and that the Carafate be administered in the grain. When I told my Vet about this, he informed me that Carafate has been experimented with by a Vet in Oregon and has been found to be very ineffective in llamas.

That evening, Linus seemed to be doing very well. I felt as if the Banamine shot had taken hold and was masking both pain and symptoms. I told the man that he still wasn't out of the woods and I began to get suspicious that Linus had much deeper problems than simply having been relocated and fed too much grain. I told the fellow to watch to be sure

*Linus..., continued*

that the llama was both urinating and defecating easily. When I spoke with him the next day, he said that he hadn't had time to monitor this. That is when I began to get scared. If I have a sick animal, my plans

change immediately so that I may monitor that animal and be able to keep my Vet well informed. That evening, the man called again to say that Linus didn't want to eat. I had warned him that if Linus quit eating, he would get sicker and possibly die. Figuring that he wasn't really watching to see if Linus would eat hay, since after all, he was "too busy" to watch for urine and feces, I told him to see if Linus showed any interest in a small piece of carrot (his favorite snack).

The next day, almost three weeks to the day since I had delivered the llamas, he called and said that Linus ate a whole bunch of carrots. Did I say to feed him a whole bunch? The problem, among others, with this man appeared to be an inability to do things in moderation. I told him that his overindulgence and lack of observation could kill this llama. He then told me that Linus was kushed and that his head was shaking. Immediately, Jeff hooked up our trailer and went to fetch Linus and bring him to our Vet, with whom I had been conferring since I first heard about Linus having trouble. It took a total of three hours to retrieve Linus and get him to the Vet. I had sent along a shot of Banamine for Jeff to administer so that we could try to keep his pain level down for the long ride from South Parker to Platteville. I met them at the clinic. A belly tap was performed and the pH level of the fluid tested, and found to be in the normal range. However, the llama had Ketosis and the liver was suspect. We took him home with us with instructions to administer Banamine as needed up to twice per day, Penicillin injections two times a day for five days and oral probiotic paste twice daily. He was housed alone so that I could monitor his urinary and fecal output. He was given free choice grass hay and water.

Linus was so glad to be home. He walked the fence looking out at his girls and seemed so pleased to be home among all of his friends, both human

and llama! I phoned the adopter and told him I thought that while the over feeding of grain certainly didn't help, it probably wasn't the cause of the illness. I told him to plan on Linus being here for at least two weeks. I wanted the llama to have his week of medication, a week to relax and then be reevaluated before he went back to Parker. I was selfishly told that he wanted Linus home and that he missed him. While I understood, I couldn't help but feel that this man was more concerned with his own feelings than with Linus's well being.

We checked on Linus several times that night and he seemed to be doing well. The next morning when I went out for chores, I found Linus down, painful, groaning and with his eyes pouring water as though he were sobbing. I immediately had Jeff give him a Banamine shot to help with the pain and I called the Vet and reported my findings. He suggested that he come out in the morning and draw blood to check his kidneys, etc. I had found some dry feces that morning but absolutely no urine. The adopter had said he would come and see Linus that day, so I waited for him to come and see for himself. As the day went on, Linus's condition deteriorated, I began to think that my hunch had been right and that he probably had liver cancer. The Banamine shot hadn't helped him at all. During chores that evening, Jeff and I agreed that Linus was so miserable and in such agony that if he were the same in the morning when the Vet came, or worse, we would euthanize him and end his suffering. As if in answer to my prayers, the Vet showed up out of the blue to check on Linus. We all talked and decided that the only thing to do was to mercifully end his suffering. Linus was put down in my arms at 5:00 p.m.

When I phoned the adopters, I left a message on their machine to call me as soon as possible. I figured that they were watching the Pro Bowl and would probably call me back at one minute past eight, which is exactly what they did. I kindly and gently explained what had happened and that there was no other choice. I told them that we could have sent Linus off to the clinic, drugged him up on narcotics and kept him alive a bit longer, but that he would have suffered and died alone without llama companionship. I let them know that I had requested a Necropsy and would know more after the procedure

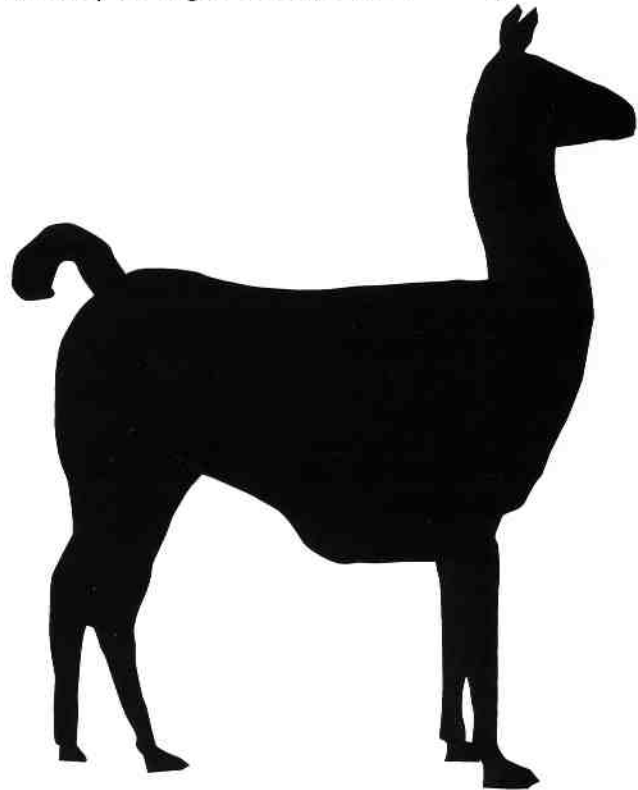


was performed. The adopters blamed me and treated me as though I had murdered their llama for no reason. They seemed to feel as if they were the only ones that had been hurt by this. They never said "thank you" or "you did the best you could." They simply demanded my Vet's phone number. I told them that I would replace the llama and while I couldn't replace Linus, I would like to give them a new friend. I apologized for all that had happened and assured them that had I known there was anything wrong with Linus, I never would have allowed him to be adopted by anyone. They treated me cruelly. My adoption contract comes with a six month probationary period. They don't actually own the animal until three visits at two month intervals have been performed by me and everything is found to be satisfactory.

The Necropsy was performed and Linus was found to have Multi Lymphatic Sarcoma. Cancer was present in liver, duodenum, and lungs. He was terminally ill and had not passed any real feces in at least a week. His lack of urinary output was simply due to the fact that he was dying and his system was shutting down. My Vet was kind enough to inform the adopters of the outcome of the Post Mortem. He had received a call from the man that morning and had been told that both he (the Vet) and I had just "thrown in the towel" and given up on Linus unnecessarily. The Vet explained that we had no choice and that he wouldn't let an animal suffer and that I was from the same school of thought.

I love all animals. I rescue llamas, horses, donkeys, dogs, cats, pigs, goats anything that needs me. There have been times that I have lost friends and almost my marriage over the animals. But, no matter what someone says, I always have room for another poor little creature who needs loving care and a new home. I have seen abuse, neglect and suffering that would make a person's hair stand on end and break their heart, provided of course, they have a heart. I would do anything for any animal, no matter the personal cost to me. But the one thing I will never do, is sit back and watch an animal suffer. I will not eat until my animals are fed. I will not leave the premises when one is ill. I will not get a full night's

rest if an animal needs to be checked on or treated during the night. I have spent late nights in the Vet's clinic, and I have slept on the barn floor. I have gone without certain luxuries so that the animals may have more. I have used my own money for rescue when donations were not forthcoming. There is nothing I wouldn't do for any animal at any time, but I will not let them suffer. It took my father months to die and I could do nothing for him. If I could have euthanized him to end his agony, I would have done it in a second. I am not a murderer. I am a compassionate person. The biggest act of love that you can show an animal is to let them go with dignity and in peace when there are no longer options. I will always remember my little Charlie Chaplin. I will always miss and love Linus. And, I will be forever grateful for the skill, compassion and friendship of the best Veterinarian an animal could ever have, Dr. Tim Thompson of Town and Country Veterinary Clinic in Platteville, Colorado. Tim, you are truly an angel! And, Jeff, you are my hero!



Lynley founded the Colorado Llama Rescue some years ago. CLF is a Colorado non-profit (501)c organization. She and the llamas could use donations of most anything to help in the cause of gathering and caring for unwanted llamas throughout the state. If you love these animals, do something for them. It's tax deductible, and it feels real good, especially to the llamas.



# 4-H CORNER

By Grace Gerber • Larkspur Funny Farm • 10209  
East Jones Road • Larkspur, CO 80118-5105 •  
(303)814-0047 • email: ggerberlff@aol.com

---

**N**ow that the holidays are over and thoughts turn to something other than festive food, long lost relatives and a parade of sports events we can now direct our attentions to those 4 legged friends and our eager 4-Her's. I just completed speaking with folks at the National Western Stock Show about the variety of activities available to youth through our local 4-H program. We all know of the wonderful virtues of loving and showing our animals, but were you aware of all the other projects in which we can use these animals,

First, and I feel most important is the Veterinary Science Projects. These projects are designed by units in which the youth will learn normal animal maintenance, then abnormal health, then how and why an animal interacts with our world, I feel that this project is the best way for a youth 10 understand the complex interaction and dependency we have with these animals. Also, there is great sense of pride and ownership a youth feels when they can help their animal through a difficult time. This project has helped my own sons learn to give shots, routine health checks, bandage minor cuts, and assist in difficult births. It has also made visits from the Vet less stressful for both animal and owner, because we have taken the time to learn at least the basics in order to give the Vet an accurate accounting of the animals health to-date. Since not all of us can get a Vet in a moments notice, this project has also helped us through the times when the wait for help can take up to four hours. This is a program I highly recommend.

Second, are the projects within Heritage Arts This is the newest of the 4-H projects. We now have a way to show all of the wonderful uses for our fiber. These projects include spinning, weaving, knitting, crocheting, rug making, needle arts and quilting with felt. As you can see, these projects highlight all of the different ways in which our fiber can be used and keeps art forms alive that might be lost in this age of high tech. This group of projects holds the most promise for the future of our industry. Youth can do these projects even if they do not own an animal. It also is a great way for youth to express their own sense of style and vision. Heritage Arts may teach our youth a variety of historic textile arts and crafts, but we are adding a new twist by using the exciting exotic fibers of llamas and alpacas.

Last but not least is the exciting and challenging area of youth judging. In 4-H there are groups of youth who learn the project of Livestock Judging. ALSA provides a comprehensive youth judging program to teach interested members the skills and art of judging. While the program has not reached the ears of all our youth, in the next year you will be hearing more about this program. I am also working with our county and state 4-H coordinators to get this program adopted as a "true" 4-H project. I hope to bring you more news about this in future issues.

As you can see, there are a lot of possibilities for our youth to show off their talents and interests. If any of the projects are of interest to you, and are not yet in our county, please contact me and I will send you information on them.

Enjoy the New Year and try something new!



# TREASURER'S REPORT

By Lougene Baird • Plum Valley Llamas • 2210 Pine Wood Road • Sedalia, CO 80135-8444 • 303-688-5445  
e-mail: lougene@att.net

The following is a preliminary report for January 1st through December 31st, 1998. Should you have any questions regarding the following report, please call at your convenience.

Respectfully submitted,  
Lougene Baird, Treasurer

## Income:

Caring For Llamas and Alpacas .....	\$ 28,978
Membership dues .....	19,230
Fiber Co-op sales .....	13,347
Service Directory ads .....	5,340
Conference fees .....	3,222
Journal ads .....	2,402
4H Youth Manual .....	1,344
Events .....	848
Misc. ....	547
Library gifts .....	<u>125</u>
Total Income .....	\$ 75,383

## Expenses:

Fiber Co-op Consignment and operations .....	\$12,026
Caring for Llamas and Alpacas distribution expenses .....	5,734
Royalties - CFL&A .....	5,384
Journal printing and postage .....	9,354
Conferences - Spring and Fall .....	3,242
Membership Directory printing, postage, production .....	2,150
Service Directory printing, postage, production .....	2,092
Events .....	1,116
Membership Committee printing, postage, phone .....	1,204
Office supplies Directors and Committees .....	989
Library - purchases, postage and supplies .....	942
Insurance, liability .....	874
Advertising .....	830
Llama Congress .....	716
Board Meetings .....	584
Annual Meeting .....	489
Misc. ....	355
Bank Fees .....	250
Professional fees - Legal and Tax .....	250
Mini-Newsletter .....	197
Elections .....	192
4H Youth Manual - distribution .....	189
Website (RMLA.com) .....	<u>70</u>
Total Expenses .....	\$49,229

## Cash on Hand as of 12/31/1998

General Operations .....	\$16,328
Life Member Savings .....	4,150
Research Savings .....	7,201
CFL&A Production Savings .....	31
CFL&A Operations .....	9,241
Liquid Asset Account .....	<u>23,473</u>
Total .....	\$ 60,424

**Exotic Fiber Breeds**

- Alpaca
- Llama
- Angora
- Cashmere
- Southdown Sheep
- Icelandic Sheep



**ARKSPUR**  
**UNNY**  
**ARM**

- Fiber
- Sales
- Breeding
- Boarding
- Market Lambs
- Gifts

**Visitors Welcome**  
Grace C. Gerber  
10209 E. Jones Road • Larkspur, CO 80118 • (303)814-0047

*Plum Valley Llamas*


PVL

Lougene and Ron Baird  
Kristin and Deidre

2210 Pine Wood Road      Phone: 303-688-5445  
Sedalia, Colorado 80135      Fax: 303-688-6814

*ALSA Champion lines ... for every need ...  
at reasonable prices*

**BEAR TRACK FARM**  
**LLAMA TRAINING CENTER**



**JERRY DUNN**  
14550 W. 50TH AVENUE  
GOLDEN, COLORADO  
80403-1707  
303-277-1129

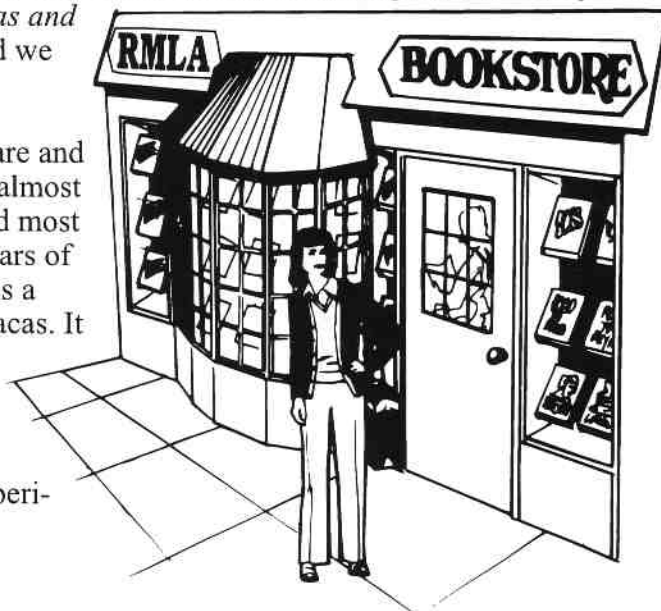
# What's Up At the RMLA Bookstore

By Katy and Keith Wegner • K2 Llamas • 17190 W. 57th Place • Golden, CO 80403-1113 • 303-273-9445 •  
k2wegne@ibm.net

About a year ago, we were offered the opportunity (Thanks, Jerry!) to manage the RMLA bookstore. "Bookstore?" you say. Yes, the Rocky Mountain Llama and Alpaca Association has a bookstore. However, before you rush over for a cappuccino and a nice browse, let me explain. We carry two titles which we distribute by mail: *Caring for Llamas and Alpacas* and *The Llama Youth Project Manual*. ...and we don't have a cappuccino machine.

*Caring for Llamas and Alpacas* (CFLA) is a great care and management guide to llamas and alpacas. It covers almost any situation you can think of. At least it has covered most of the ones Keith and I have experienced in our 2 years of llama ownership. *The Llama Youth Project Manual* is a wonderful guide to basic training for llamas and alpacas. It is intended for 4-H groups who want to do a llama or alpaca project. However, we also recommend it to new owners who are looking for books that help them train their animals.

So, now that we have almost a year of bookstore experience, let us tell you what goes on at the bookstore.



## Where Do We Keep All Those Books?

We took over operating the bookstore just as the Association ordered another printing of CFLA. This printing included our name and address in the book. It also allowed the printer to deliver the books straight to us. We expected to store one-half of the printed books, and the printer would store the other one-half. So Keith arranged to be home and we took delivery of 2,000 CFLA, packed neatly in boxes of 6, 12, or 30 books. Keith cleverly arranged the garage to accommodate the pallets of boxes, and it looked very nice when I arrived home from work that evening.

Keith was a bit surprised, a couple of days later, to receive a phone call from the printer's delivery truck driver, who was in our driveway with the second half of the book printing. Keith hurried home, and managed to squeeze the next 2,000 books, neatly packaged, into our garage. This time, when I arrived home from work, I found it a bit overwhelming. . . but they all fit!

By now, there a lot fewer than 4,000 books in our garage but it is still a tight fit for the two cars between the table saw, tractor with the snow plow, and thousands of CFLA. Nevertheless, the bookstore inventory is stored safely on pallets in a nice dry area that is readily accessible for mailing and processing the many orders that we receive.

## So, Who Buys All Those Books?

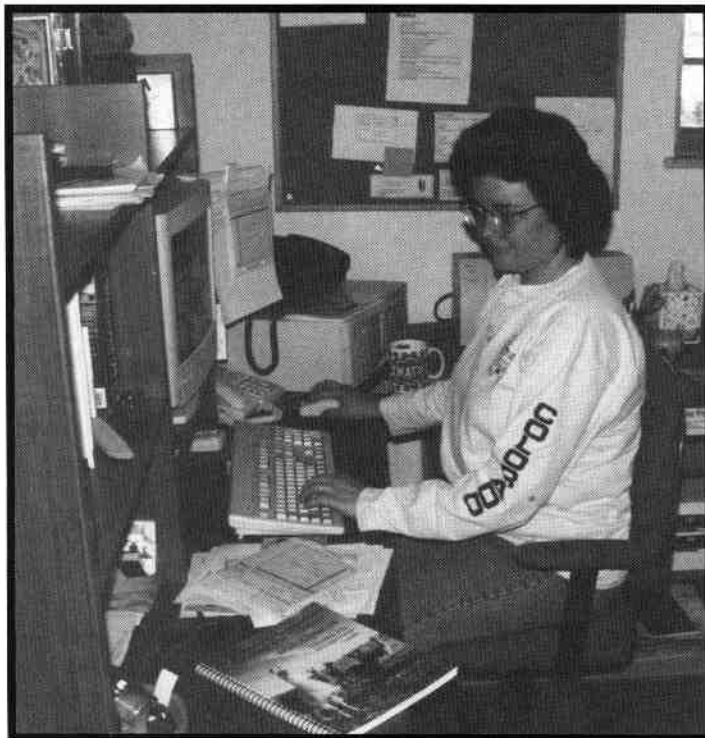
Keith and I work in the bookstore every week, at least two evenings. We receive phone calls, e-mailed and faxed inquiries and orders. Many inquiries are from bookstores—Baker & Taylor, Barnes & Noble, and Borders Books and Music are major customers. We also have a wholesale account with Amazon.com. We are amazed how many CFLA are sold over the Internet to Amazon.com. So many, in fact, that we set up a single account for them so we can process the orders in batches. They are a very good customer for the Association.

We should also mention that some our best customers are USA distributors of llama gear and literature including Dorane Strouse of Useful Llama Items, Neon Llama Supply, Mt. Sopris Llamas, Llama Tique, and the great folks at the RMLA Fiber Co-op. In this group we should also include the many extension

services that purchase the *Youth Manual* for their 4-H projects.

In addition to several overseas bookstores (Heffers in England, for example) we receive many orders from individuals throughout the world. We have received orders for books directly from folks from Canada, England, New Zealand, Australia, Columbia, Peru and Germany. The bookstore is truly an international distributor and marketer for the RMLA. That's a remarkable achievement for the Association and speaks well of the quality of the merchandise we sell.

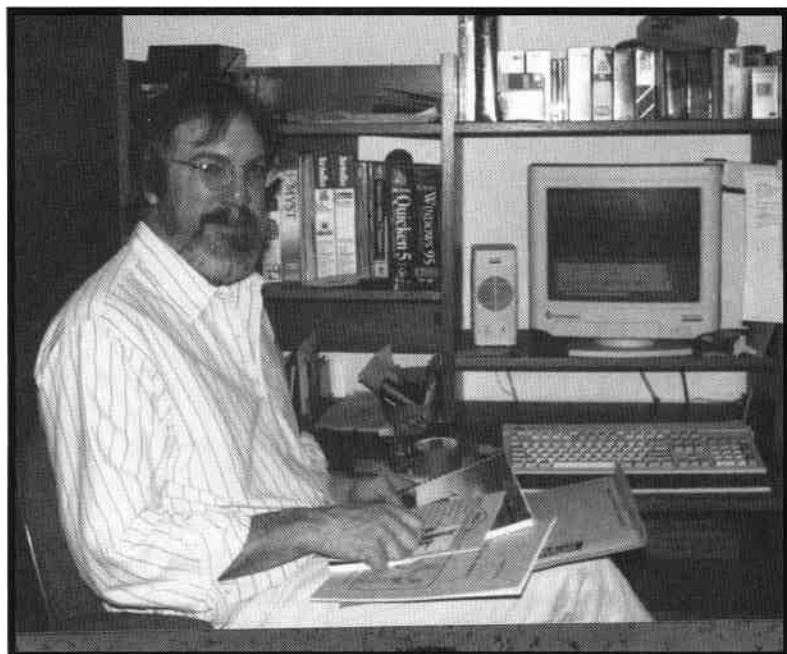
One of the things about operating the bookstore that Keith and I enjoy is talking to new or about-to-be owners of llamas and alpacas. I can especially relate to the excitement and nervousness when new llamas arrive to live in the yard. Some of the stories of other new owners are truly entertaining.



*Katy Wegner*

#### **Number Crunching. . . !**

However, the fun part of working with people and sending books out all over the world isn't the only fun we have. This is a business and we have to make sure that we operate the bookstore in accordance with the requirements of good business and accounting practices as well as complying with the requirements of the taxing authorities and the guidelines established by the RMLA Board of Directors. Working with Lougene Baird (RMLA treasurer and our Board contact) helps keep the fun in running the business. We love her! She helped us quite a bit while we were getting started (as did Jan Redenbarger and Julie Messick). Now we are running like clockwork.



*Keith Wegner*

We started operating the Bookstore in May of 1998 and to give you some idea of what we've been up to, we have sold over 1,230 of the 2nd printing of *Caring for Llamas and Alpacas* and nearly 300 *Youth Manuals*! Although this hasn't made much of a dent in the stockpile of inventory in our garage, the Bookstore has generated income for funding ongoing programs and promoting the Association.

We should close by thanking the authors of the books we sell for developing such good materials. The books are great and

we have received many compliments on them from customers. We ourselves refer to them often when we have a problem or just need to know more about our wonderful animals. Now that you know we're here and what we're doing, give us a call, or an order, and we'll take care of you!

# RMLA LIBRARY REPORT

By Sharon Herbold • Pikes Peak Woolies • 15350 Highway 83 • Colorado Springs, CO 80921 • 719-495-3092  
e-mail: ppwoolies@earthlink.net

The RMLA Library continues to have lots of requests for materials from members. Fiber related items continue to be very popular, especially those that show an end product. Because of this popularity, I have added the following videos to the library:

## FELTMAKING BY HAND, BASIC PROCESS BY ANNE VICKERY

This video introduces the viewer to the basic feltmaking technique. It includes how to choose wool, how to prepare the wool and how to make patterns. Instructions for making a hat and other projects are included. This is an easy craft to teach 4-H groups.

## FELTMAKING-GARMENTS AND SURFACE DESIGN TECHNIQUES BY ANNE VICKERY

This video is for the fiber artist with a basic understanding of feltmaking. It explains some advanced techniques including how to make large seamless projects and inlaying.

## ART OF FIBER DYEING BY SANDY SITZMAN

This video shows three methods of dyeing protein fibers. One method uses union dyes and the other methods use acid dyes. The methods work with both yarn and raw fiber, although the main focus is on fiber.

## FIBER PREPARATION AND MUTICOLOR BLENDING TECHNIQUES BY DEB MENZ

This video presents methods of preparing fiber for spinning. The main focus is on using fibers that have been dyed and then spinning it into multicolored yarn. It shows several blending processes using the drum carder and wide combs.

If you enjoy working with the fiber from your llamas or alpacas, check out one or more of these videos to learn new ways of using this wonderful product. If there are other items you would like to see added to the library please let me hear from you.

I have a new e-mail address (ppwoolies @earthlink.net), for members who find it convenient to correspond with me over the internet.

SOEPI

Library



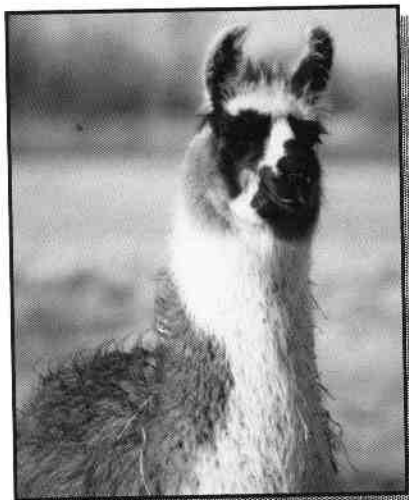
# Llamarage

*Breeders of Champion Show Llamas*

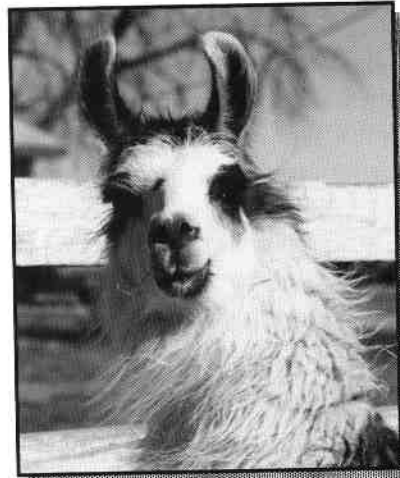


Lllamarage's Santana - Male  
4/19/97; very dense fleece;  
flashy Java son, ready to start  
breeding.  
\$1200

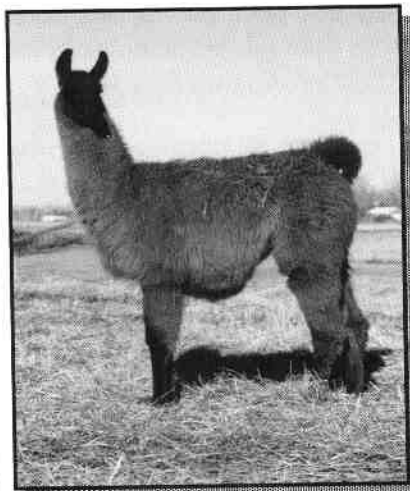
Excellent values on  
quality llamas!



Lllamarage's Caliente - Male  
5/28/98; *Show Prospect!* 1/4  
Bolivian son of Gandy Dancer. full  
brother to Checotah - Res. Champ  
@ RM Reg'l & Res. Champ Yrfg. @  
National;  
\$2,000

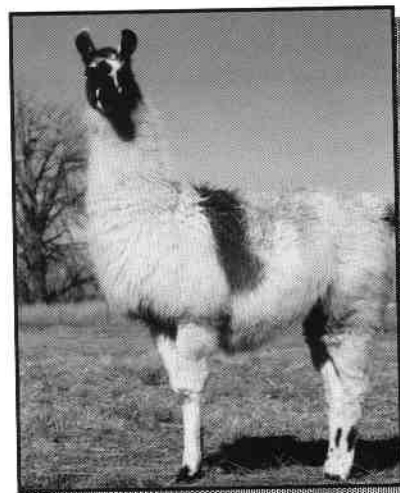


Jessica Rose - bred Female  
5/28/95; LW Kissam  
granddaughter, has had 2  
female babies, bred back to  
Gandy Dancer  
\$1,500



Sybil - Female  
7/18/98; daughter of GLL Java, will  
be a big girl, with dad's  
temperament; nice wool quality;  
\$1000;

If you would like photos  
or a video of these or any  
of our other llamas for  
sale, please don't hesitate  
to call. All of our llamas  
come with health  
guarantees. Breeding  
stock: fertility guaranteed.



Snapdragon - Female  
5/8/98; daughter of GLL Java,  
also nice disposition. Excellent  
maternal line;  
\$900;

Mary Beth & Joe Hartsough  
P.O. Box 574

970/785-2463  
Platteville, Co. 80651

# The ILA Newsletter & Information Network

By Ron Hinds, RMLA Journal

*The ILA Newsletter & Information Network was implemented by the ILA so ILA affiliates could share newsletters and thus valuable information. ILA mailed out labels on a regular basis to members of the Network, based upon when their newsletters were mailed out. The ILA has discontinued that service.... but parts of that service need to continue.*

In late-1998 I called the ILA and requested information about the Newsletter & Information Network, names, history, how it works, and anything else that might be interesting. I thought it would make an interesting article for the RMLA Journal if not the 'network' (and still do). Some months later I sent another request in, this time via e-mail to [ila@internationalllama.org](mailto:ila@internationalllama.org). I got a reply back from Lance Bell. Lance indicated that the Network has not been in operation since May of 1998. That date is when Sandy Chapman left the ILA and the ILA Administrative office was turned over to the management company of Caruso & Associates. Caruso and Associates did not take over that part of the ILA function.

Lance contacted Sandy and with a couple of faxes I received a list of the Network membership (as of May 1998). I e-mailed Sandy and ask her for some history, etc of the list for the article in addition to what she thought about the problem at hand.

I did some fixing and correcting of the faxed list that I got, typed it in to the database and added a few names from Bob & Barbara Hance's Network (RMLA) mailing list. The ILA was on the original list and it was going to Sandy at the Denver office. I changed that to the ILA address in Kalispell. Wasn't sure what is was but I knew the Denver address wouldn't make it there!

The Bottom Line:

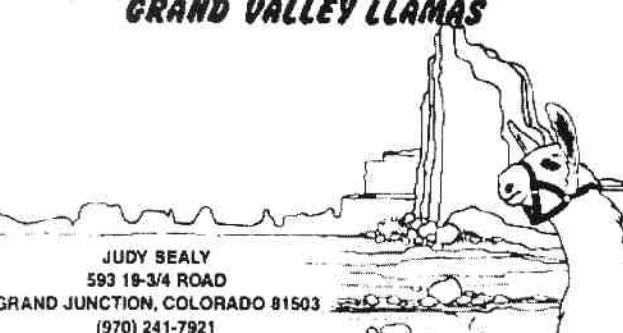
In the past ILA mailed out labels on a regular basis to all Network editors. I don't see anyone mailing out labels anymore, it's too costly and time consuming. It would be handy if one person or organization, was in charge of the list and 'kept' the original list and e-mailed, faxed, or snail mailed out changes as they occurred. Anybody with changes would simply contact this one person rather than all 34 members as it is now. With that, each Network member would simply add these names to their existing mailing list.

I do not want to see the Network fail. I believe it is a very necessary benefit to all of the members of all of the camelid organizations in North America.

The ILA Newsletter & Information Network needs a little help from somebody. I'm sure many of the editors would be willing to take on this operation at the drop-of-a-hat, but I don't feel that any of us should simply take-over the duties that once was the ILAs. The duties need to be turned over to?? I am very grateful to Sandy and Lance for helping me out in this effort... but the Network needs to continue!


Want the list on the next page? DO NOT TYPE THEM IN! ... contact me via e-mail [ [sdflama@bewellnet.com](mailto:sdflama@bewellnet.com) ] and I'll e-mail it to you!

**GRAND VALLEY LLAMAS**



JUDY SEALY  
593 19-3/4 ROAD  
GRAND JUNCTION, COLORADO 81503  
(970) 241-7921

**ROSEBUD LLAMAS UTAH**



Walsh & Weathers, Inc.

**Shirley Weathers  
and Bill Walsh**

P.O. Box 270090  
Fruitland, UT 84027-0090  
[www.ubtanet.com/~wvw/rblu.htm](http://www.ubtanet.com/~wvw/rblu.htm)

Phone (435) 548-2630  
FAX (435) 548-2438  
[wvw@ubtanet.com](mailto:wvw@ubtanet.com)

**PACK TRIPS, DAY HIKES, BOARDING**



## Members of the ILA Newsletter & Information Network (and their editors)

- |  |   |   |   |
|--|---|---|---|
| <p>Alaska Chapter - ILA<br/>Roberts, Claudia<br/>HC 1, Box 6310<br/>Palmer, AK 99645<br/>907-376-7676<br/>907-376-4582<br/>E-mail: groberts@alaska.net</p>                     | <p>Hoosier Llama Association<br/>Bogardus, Lynne<br/>380 S. 300 E<br/>Columbia City, IN 46725<br/>219-244-7936</p>  | <p>Llama Owners of Washington State<br/>Oatman, Allison<br/>2817 81st Ave. N.W.<br/>Olympia, WA 98502-9611</p>  | <p>Rocky Mountain Llama and Alpaca Association<br/>Hinds, Ron &amp; Marie<br/>38620 County Road 29<br/>Elizabeth, CO 80107-8702<br/>(303) 646-2665<br/>(303) 646-2654 fax<br/>E-mail: sdflama@bewellnet.com</p> |
| <p>Alpaca &amp; Llama Show Association<br/>Baird, Ron &amp; Lougene<br/>2210 Pine Wood Rd.<br/>Sedalia, CO 80135-8444<br/>E-mail: lougene@att.net</p>                          | <p>Illinois Llama Association<br/>Hofreiter, Judy<br/>11421 N. CR 1650-E<br/>Havana, IL 62644<br/>309-543-3497<br/>309-543-4398 fax<br/>E-mail: llamama@fgi.net</p>               | <p>Maine Llama Association<br/>Parker, Katie<br/>RR1, Box 186<br/>Milo, ME 04463<br/>207-943-5289</p>   | <p>South Central Llama Association<br/>Conyngnam, Karen<br/>7403 Newhall Lane<br/>Austin, TX 78746-4115<br/>512-328-8715<br/>E-mail:<br/>72040.3361@compuserve.com</p>  |
| <p>AOBA Hummmer<br/>Damm, Annie and Diane Peckham<br/>7434 Layfayette Rd.<br/>Lodi, OH 44254<br/>330-948-4218<br/>330-948-0007<br/>E-mail: tsfpacas@mail.ohio.net</p>          | <p>International Llama Registry<br/>McKinney, Kathi<br/>71 Schafer Meadows Ln N<br/>Montesano, WA 98563<br/>360-249-5627<br/>360-249-5089 fax<br/>E-mail: bobkat@techline.com</p> | <p>Michigan Llama Association<br/>Hockin Frambes, Suzanne<br/>14775 Peckham Rd.<br/>Albion, MI 49224<br/>517-857-3787<br/>517-857-3787 fax</p>                                | <p>Southern States Llama Association<br/>Hutsell, Joan<br/>Rt. 2, Box 6<br/>Rising Fawn, GA 30738<br/>706-462-2218<br/>706-462-2218 fax</p>   |
| <p>CAL - ILA<br/>Stillman, Kriss<br/>P.O. Box 429<br/>Nevada City, CA<br/>95959-0429</p>   | <p>International Llama Association<br/>P.O. Box 1891<br/>Kalispell, MT 59903-1891<br/>(406)257-0282<br/>ila@internationalllama.org</p>  | <p>Missouri Llama Association<br/>Cleaveland, Zelma,<br/>P.O. Box 467, Rt 1<br/>Chillicothe, MO 64601<br/>816-646-5233<br/>E-mail: zkllamas@aol.com</p>                       | <p>Southwest Montana Llama Association<br/>Corbin, Richard<br/>2045 Trailcrest Dr.<br/>Bozeman, MT 59718-7541<br/>406-587-7964</p>  |
| <p>Calpaca<br/>Hoffman, Eric<br/>121 McGivern Way<br/>Santa Cruz, CA 95060</p>   | <p>Kentucky Llama and Alpaca Assn.<br/>Flamm, Tom and Christy<br/>6041 Damar Ct.<br/>Lexington, KY 40515<br/>606-263-2232<br/>606-263-2232</p>                                    | <p>Nebraska Llama Association<br/>Cernohlavek, Eunice<br/>6405 W "O" St.<br/>Lincoln, NE 68528-9129<br/>402-475-8636<br/>402-476-8636 fax</p>                                 | <p>Tennessee Llama Community<br/>Tanner, Darlene<br/>202 Ridge Road<br/>Medina, TN 38355<br/>901-783-3036<br/>901-423-4590 fax</p>  |
| <p>Canadian Llama &amp; Alpaca Assn.<br/>Guyn, Lorraine<br/>Box 47 Site 1, RR 9<br/>Calgary, Canada T2J5G5</p>   | <p>Llama Association of Mid-Atlantic States<br/>Sottosanti, Nancy<br/>678 Mill Creek Rd.<br/>Luray, VA 22835<br/>540-743-4310<br/>E-mail: luralam@shentel.com</p>                 | <p>New York Llama and Alpaca Association<br/>Santorelli, Pam<br/>7300 Ridge Road<br/>Lockport, NY 14094<br/>716-439-0928<br/>E-mail: msantorelli@att.net</p>                  | <p>Utah Llama Association<br/>Miller, Rita<br/>1360 East 3200 South<br/>Francis, UT 84036<br/>435-783-2676</p>  |
| <p>Central Coast Llama Association<br/>Holm, Dottie<br/>13805 El Camino Real<br/>Atascadero, CA 93422<br/>805-466-5959<br/>805-466-5959<br/>E-mail: hummdinger@thegrid.net</p> | <p>Llama Association of North America<br/>Scholfield, Polly<br/>20230 Trovinger Mill Rd.<br/>Hagerstown, MD 21742-5202<br/>301-797-0906<br/>301-797-0956 fax</p>                  | <p>Northern Rockies Llama Assn<br/>Huelsmeyer, Susanna<br/>P.O. Box 1038<br/>Livingston, MT 59047<br/>406-220-2895<br/>406-220-2895 fax<br/>E-mail: thebtwl@aol.com</p>       | <p>Western Idaho Llama Association<br/>Lokken, Scott &amp; Julie<br/>705 W. Rush Ct.<br/>Eagle, ID 83616<br/>208-939-2536<br/>208-396-4732 fax<br/>E-mail: julie_lokken@hp.com</p>                              |
| <p>Central Oregon Llama Association<br/>Halligan, Sherry<br/>9020 S. Hwy 97<br/>Redmond, OR 97756<br/>541-382-5758</p>   | <p>Llama Association of Southern California<br/>Leighton, Pat<br/>P.O. Box 878<br/>Norco, CA 91760<br/>909-734-9829<br/>E-mail: lazylama@aol.com</p>                              | <p>Ohio River Valley Llama Association<br/>DeRhodes, Carole<br/>1075 Mt. Pleasant Rd NW<br/>North Canton, OH 44720<br/>330-499-7983<br/>330-492-6960<br/>330-499-8868 fax</p> | <p>Willamette Valley Llama Association<br/>Thoms, Marilyn<br/>322 La Casa St.<br/>Eugene, OR 97402-6559<br/>541-942-7564<br/>E-mail: viscom@clipper.net</p>   |
| <p>Greater Appalachian Llama Assn.<br/>Dunstan, Jane<br/>RR 1, Box 427<br/>Newcastle, ME 04553<br/>207-586-6800</p>  |   |   |   |





# OPEN HOUSE

During the whole month of June 99'

**Eva Domatti, Owner**

143 Ranger Station Road

Florissant, Colorado 80816



**Come to Colorado in JUNE for a whole month of Open House viewing of Full Chilean, Full Peruvian, and North American, QUALITY llamas for sale. 20+ Years of HandsOn Experience, Excellent Breeding Stock, Showring Winners, and Obstacle Experts!**

**IF you purchase a llama and pay in full – Will Offer FREE Boarding for the summer in Colorado!**

**SUNSHINE ACRES LLAMAS is minutes from historic Cripple Creek, CO and many other summer vacation areas to visit...**

**COME WEST this summer – look forward to seeing you!**

719/748-3247 or (Texas) 281/367-6166

Just for the  
Kids (in all of us).

# THE ILA NEWSLETTER & INFORMATION NETWORK WORD SCRAMBLE

W I L L A M E T T E V A L L E Y T E  
O Y E L L A V R E V I R O I H O A R  
N C U K A W A S H S T A T E O R O L  
A D C D S A H O S R E I S O O H L F  
I K S K K U Z C A L I L A C U A A H  
H U N C A L P A C A U N K N M O U S  
C S I Z C P N L H N U Y R A R E F A  
A W A O H C F I A Q M D A N K N F E  
L M L H A E S F T O I N U Q E I O E  
A O P A P N O U U R D L L A N A D S  
P N N D T T U N U A N L L D T M F S  
P T E I E A T R L X D I S D U I E E  
A A D W R A H P I R S E I K C O R N  
R N L Z I L A U N E B R A S K A N N  
E A O N L C O P W O R U I P Y U L E  
T C G K A K B Q I R U O S S I M L T  
A L S A C A N A D L C A N A D I A N  
E C X E C E N T R A L O R E G O N U  
R S C E L C N Z N A G I H C I M K L  
G S N R P N O T E E P U N E W E C P  
S N X S E D U A R K D A Y O R K C E  
M I D Q E U E Q S A C E C L I F P C  
A T L A N T I C F T L C E P N S P K  
S T A T E S O S T A T E S O D C U O

ALASKA CHAPTER ILA  
ALSA  
AOBA  
CAL ILA  
CALPACA  
CANADIAN  
CENTRAL COAST  
CENTRAL OREGON  
GOLDEN PLAINS

GREATER APPALACHIAN  
HOOSIER  
ILA  
ILLINOIS  
ILR  
KENTUCKY  
LANA  
MAINE  
MICHIGAN

MID ATLANTIC STATES  
MISSOURI  
N ROCKIES  
NEBRASKA  
NEW YORK  
OHIO RIVER VALLEY  
SO CALIF  
SO STATES  
SOUTH CENTRAL

SW MONTANA  
ROCKY MOUNTAIN  
LLAMA AND ALPACA  
TENNESSEE  
UTAH  
W IDAHO  
WASH STATE  
WILLAMETTE VALLEY

*Puzzle by Ron Hinds-RMLA Journal*

# RMLA Membership

—report, changes and new members—

By Bob and Barbara Hance • (RMLA Membership) Hance Ranch • 11818 W. 52nd Ave. • Wheat Ridge, CO 80033-2032  
303-422-4681 • 303-422-3568 fax • e-mail: hancelama@att.net • http://www.home.att.net/~hancelama

The RMLA membership committee sent the Membership list to the publisher on January 15, 1999. The Service Directory advertising orders for the 1999 "Yellow Pages" were sent on January 25, 1999.

We were asked by the BOD to make an effort to get these into publication in a more timely manner. I know there will be a few of you, who delayed and will be disappointed that you will not be included. We feel the December 31 deadline is not unrealistic.

On January 15, 1998 we had a membership of 365, January 15, 1999 we have 422.

Since RMLA has been present in so many locations this year, we have received quite a few New Members; folks who own llamas or alpacas and have been trying, without success to join an organization like RMLA to get information.

In 1998 we had 141 new Members join. We have 15 new members so far this year. Members are located in 25 States and one in Italy.

—Bob and Barbara Hance

## Member Changes

Carol Lontine (new e-mail) [cllontine@cwix.com](mailto:cllontine@cwix.com)

Rick Steadham & Karen Sterling (new address)  
4610 Harmony Grove Rd., Hopkinsville, KY  
42240-8537

Jane Wheeler PhD (new address) 12810 SW 4st  
Pl., Ocala, FL 34481-7901

Rory Schilling (Junior) (new address) P. O. Box  
8005, Kodiak AK 99615-8005

Bret Nye & D.J. Browne (new address) 3854  
Foothills Dr., Loveland CO 80537-3569

## New RMLA Members

Nancy L. Bradfield  
12589 Jay Rd. Erie, CO 80516-6910  
(303) 828-4006  
E-mail: [nancyb@peakpeak.com](mailto:nancyb@peakpeak.com)

Rosemary D. Budelis  
5008 Madison Ave.  
Jacksonville, AR 72076  
(501) 835-0513  
(501) 835-1305 fax  
E-mail: [rosebud.llamas@juno.com](mailto:rosebud.llamas@juno.com)

Halley Coffman (Junior)  
Cloud Peak Llamas  
P. O. Box 541  
Story, WY 82842-0541  
(307) 683-2548  
(307) 683-2548 fax  
E-mail: [cloudpk@wavecom.net](mailto:cloudpk@wavecom.net)

*continued...*



**Harold & Sharon Herbold**  
**Lauren Herbold**  
15350 Hwy 83  
Colorado Springs, CO 80921  
(719) 495-3092  
(800) 484-9739-WOOL (9665)

Llamas  
Breeding Stock, Pets, Sheep Guards  
Reg. Corriedale & Colored Sheep  
Breeding Stock, Handspinning Fleeces, Market Lambs  
Visitors Welcome  
*and alpacas!*

Tiffany Coffman (Junior)  
Cloud Peak Llamas  
P. O. Box 541  
Story, WY 83842-0541  
(307) 683-2548  
(307) 683-2548 fax  
E-mail: cloudpk@wavecom.net

Tori Everhart (Junior)  
Quakey Brake Llamas  
P.O. Box 247  
Cory, CO 81414-0247  
(970)835-8221  
E-mail: qbllamas@aol.com

James Gregory Flatt  
Rocky Mountain Carousel  
P. O. Box 37 - 290  
Tahosa Ranch, South Road  
Allenspark, CO 80510-0037  
(303) 747-2440

Joel and Pat Hayward  
LlamaWalk Colorado  
P.O. Box 41  
Masonville, CO 80541-0041  
(970) 613-0239  
(970) 613-0239 fax  
E-mail: llamawalk@aol.com

Kim Kasinger  
P. O. Box 1236  
Cedaredge, CO 81413-1236  
(970) 856-7654

Diana Lyons  
L. L. Llama Gear  
9020 S. Hwy. 97  
Redmond, OR 97756-9666  
(541) 389-6855  
(541) 389-6855 fax  
E-mail: llama@empnet.com

Connie Mann  
P. O. Box 1123  
Lyons, CO 80540-1123  
(303) 823-6718

Richard A. Martin  
11275 Random Valley Cir.  
Parker, CO 80134-6010  
(303) 840-3600  
(303) 840-8700 fax  
E-mail: ramdam@aol.com

Mike and Patty McLane  
Paradise Ranch  
7416 E. Windlawn Way  
Parker, CO 80134  
(303) 841-8535  
E-mail: mamclan@aol.com

Michael C. McLane  
Paradise Ranch  
7416 E. Windlawn Way  
Parker, CO 80134  
(303) 841-8535  
E-mail: mamclan@aol.com

Wyatt and Dawn Moore  
WILD APPLE LLAMAS  
1446 Wild Apple Lane  
Corvallis, MT 59828-9574  
(406) 961-4940  
(406) 961-4940 fax  
E-mail: wildapplellamas@prodigy.net

Patience Powell  
Prarie Oaks Farm  
4834 Lower West Branch Road SE  
Iowa City, IA 52240-8382  
(319) 358-9036  
E-mail: powellp@noranz.com

Mary Pulte  
80 Rd. 5295  
Farmington, NM 87401-1531  
(505) 632-0323  
E-mail: mpulte@compuserve.com

David B. Rudin and Jennifer A. Mesot  
LLAMA BROTHERS TRECKING CO.  
7589 County Road 102  
Guffey, CO 80820-9607  
(719) 689-0120

Jane T. Sheppard and Jerry Uherek  
HAPPY J. RANCH  
P. O. Box 214  
Beasley, TX 77417-0214  
(409) 387-2521  
(409) 387-3006 fax  
E-mail: hapjfarm@fbtc.net

Fred Snoy  
Rio Grande Llama  
7130 Coors Tr. NW  
Albuquerque, NM 87120-2779  
(505) 898-2948  
(505) 890-1177 fax  
E-mail: snoyfj2@aol.com

WELCOME TO RMLA,  
FOLKS

*New RMLA Members, continued...*

Tanya Swegler  
1092 S. Zeno Wy #201  
Aurora, CO 80017-2621  
(303) 750-9357

D. J. Woehl (Junior)  
High Plains Llamas  
P. O. Box 1132  
Douglas, WY 82633-1132  
(307) 358-3912  
E-mail: deeje\_01@hotmail.com

Emily J. Wright (Junior)  
Dragonfly-Sun Ranch  
490 Quakie Way  
Bailey, CO 80421-1838  
(303) 838-1306  
E-mail: dsunranch@aol.com

Larry and Becky Zierer  
Lazy B Acres Alpacas  
47705 E. County Road 34  
Bennett, CO 80102-8201  
(303) 744-4110  
(303) 290-3884 fax  
E-mail: bpzierer@lucent.com



---

## RMLA FIBER CO-OP BOOTH — Record Sales in 1998

By Sharon Beacham • Pheasant Hill Farm Llamas • 2380 N. 95th Street • Boulder, CO 80301 • 303-666-9437  
E-mail: pheasant\_hill@email.msn.com

---

Thanks to the efforts and support of many RMLA members, the Fiber Co-op Booth finished its third year with a record number of locations and sales. It was set up at 7 different events; sales totaled \$13,347. During 1996, its first year of operation, it went to 3 events and produced \$2,715 in sales.

Handspinner's roving and clothing items continue to be the best sellers, followed by mill-spun yarn and Christmas ornaments. The booth also stocks RMLA's Caring for Llamas and Alpacas, books for children and about lama fiber. Note cards and jewelry with lama designs and household items complete the inventory. Unprocessed lama fiber rarely sells, with the exception of the winners of the llama fleece competition at the Estes Park Wool Market. This year, the booth has already been to the National Western Stock Show. Sales were brisk and totaled over \$2,000.

Here's the schedule for the rest of the year:

- Snake River Fiber Festival, Idaho Falls, Idaho, April 30 – May 2
- Estes Park Wool Market, Estes Park, Colorado, June 19 – 20
- Wyoming State Fair, Douglas, Wyoming, August 14-15
- Taos Wool Festival, Taos, New Mexico, October 2-3
- RMLA Fall Conference, date and place to be announced
- ALSA Grand National Show, Columbia, Missouri, November 12-14

All RMLA members are invited to consign items and help staff the booth. It's a great opportunity to meet potential lama owners and introduce them to our luxury-fiber producers. To receive a consignors' packet or volunteer to help, please contact Karen Kinyon, 970-484-6241, or Sharon Beacham, 303-666-9437.

# CLASSIFIED ADS

**FIBER PROCESSING** – Roamin' Llamas and Woolworks specializes in quality carding of llama and alpaca fiber. Wool cleaning service offered, too. Fast, friendly service. Catch the llama wool wave and market your processed wool for profit. Experiment with blends, colors, and novelty roving for handspinners. **Roamin' Llamas and Woolworks**, 3550 Big Creek Road, New Meadows, Idaho 83654. (208)347-3151 (4/6)

**RANCH AND FARM SUPPLIES** for new/established farms. Halters, leads, grooming, shearing, scales, chutes, wormers, vaccines, probiotics, cria care, signs, weathervanes, packs, carts, harnesses, show items, watering, feeding equipment, spreaders, fly control, watches, clocks, vinyl fencing, etc. **Best Prices Guaranteed Useful Lama Items** - Brochure - 3540 76th - Caledonia, MI 49316 1-800-635-5262 e-mail: sales@useful-items.com (4/4)

**GOOD PACKERS:** 8 geldings, 1 stud, ages 6-up, prices \$500-up, all trail veterans. Stud is a prize. Sopris gear avail w/ llamas. Lovely 3-yr old pregnant female-\$2000. **Rendezvous Llamas**, 503-203-8972 (2/6)

**SPINNING LLAMA AND ALPACA NEW 2nd EDITION** now available - 6 additional pages, including 2 new projects. \$12 plus \$2 shipping & CO Tax 3.65%. **Chris Switzer**, Box 3800, Estes Park, CO 80517. (ufn)

**LLAMAS FOR SALE:** Light to heavy wool-babies to adults - stud service available to Ausome Mate, our 3/4 Chilean heavy woolled son of Aus. Boarding available. **Lost Boys Ranch Llamas**, Laurie Mattke, Watkins, CO (303)739-2910. (4/4)


**LLAMA HERD REDUCTION SALE** Beautiful heavy wool males & females all colors 1/2 to 3/4 Chileans and 1/2 to 3/4 Bolivians, great bloodlines \$650 to \$3,000. Free rebreeding with any female purchase. **Moonstar Llamas** - Guffey, CO - Rodney Bryan (719)689-9760 (1/12)

**HERD DISPERSAL SALE:** 2 adult female llamas, one with Cadfael male cria. 3 males including yearling out of HBL Gulliver, and 2 year old out of GLL Neebish. Also 5 year old black male alpaca. All priced to SELL! Call Dave Ruska - (970) 330-2059.

**LLAMAS FOR SALE:** Herd reduction sale. No reasonable offers refused. Great bloodlines, sweet dispositions, all sizes and colors. **GRAND VALLEY LLAMAS**, Judy Sealy at (970) 241-7921. Located in Grand Junction, Colorado.

**LLAMA COOKIE CUTTERS** \$5.00 Includes S & H, Checks payable to Laurie Mattke, **Lost Boys Ranch Creations**, 1600 S. Quail Run Rd., Watkins, CO 80137 (303)739-2910


**LLAMAS FOR SALE:** "Son of Alumbrado", 2 year old male, 1/2 Chilean apploosa, halter broke, great breeding background or will make a good pack llama. Phone: 435-781-0445 Vernal, UT



**Breeding**  
David & Kathy Geyer  
(918) 343-3802

**Sales**  
Rt. 1, Box 126-A  
Chelsea, OK 74016

NE of Tulsa on Historic Route 66



**INDIAN PEAKS LLAMAS**  
Since 1980

Acquisitions  
Consultations • Evaluations  
Sales

Alaine Byers  
PO Box 202, Ward, CO 80481  
303-459-3245  
ALSA Judge

# Rocky Mountain Llama and Alpaca Association

## Membership form

### Membership Types

- Date: \_\_\_\_\_
- Individual adult \$30.00/year (1 vote, Journal, directory entry)
- Farm/Ranch \$50.00/year. (Couple or 2 individuals with 1 business, 2 votes, Journal, directory entry)
- Junior \$10.00/year (18 or under, must have adult member sponsor, Journal subscription and reduced conf./show fees as encouragement to participate.)
- Life Membership - \$500

Name 1 \_\_\_\_\_ Farm/Ranch \_\_\_\_\_ Age (if Junior) \_\_\_\_\_

Name 2 \_\_\_\_\_ Phone \_\_\_\_\_ Fax \_\_\_\_\_

Address \_\_\_\_\_ City \_\_\_\_\_ State \_\_\_\_\_ Zip+4 \_\_\_\_\_  
Specify Sponsor if Junior membership  
Please include, Zip+4 reduces postage costs

E-Mail address \_\_\_\_\_

Number of Llamas owned: Females \_\_\_\_\_ Intact Males \_\_\_\_\_ Geldings \_\_\_\_\_

Number of Alpacas owned: \_\_\_\_\_

Fill out form and mail with your check to:  
 Bob & Barbara Hance, RMLA Membership  
 11818 W. 52nd Ave.  
 Wheat Ridge, CO 80033-2032

### Expertise /Interest

- Breeding (BR)     Training (TR)     Driving (DR)
- Sales (SL)     Products (PR)     Boarding (BO)
- Fiber (WL)     Research (RE)     Judging (JG)
- Packing (PK)     Leasing (LE)     Brokering (BK)
- Commercial     Other Specify \_\_\_\_\_
- Packing (COM'L PK) \_\_\_\_\_

### Committee Interest

- Finance     Marketing     Fiber
- Continuing Ed.     Nominations/Elect.     Membership
- Packing     Research     Performance
- 4 - H     By-Laws     Library
- Other Specify \_\_\_\_\_

Volunteering in RMLA is very rewarding, you meet some great people and you get to do some hummin' along the way.

# Caring for Llamas and Alpacas

A world reknowned RMLA publication. Orders shipped around the planet... (and elsewhere!)

To Order:

<http://www.Amazon.com>

or

Send your name, address, city, state and zip and

\$23.95 plus \$4.00 S & H

(CO residents add 3% sales tax) to:

Keith & Katy Wegner

RMLA Bookstore

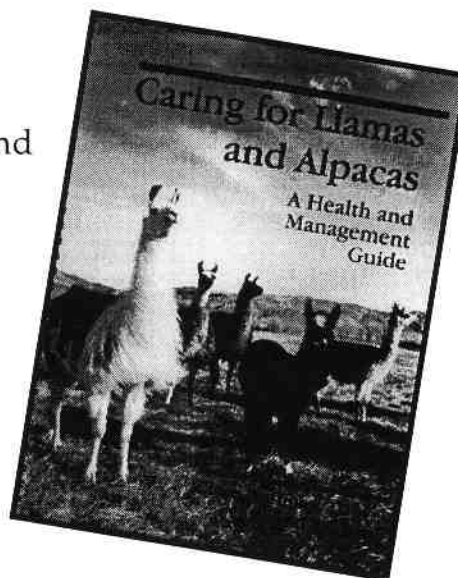
17190 W. 57th Place

Golden, CO 80403-1113

(303)273-9445

e-mail: k2wegne@ibm.net

ISBN:0-9622768-2-0





# List of Advertisers

Bear Track Farm .....	43	Pikes Peak Woolies .....	52
Jay, Dan .....	34	Plum Valley Llamas .....	43
Grand Valley Llamas .....	48	Ring Around the Moon Llamas .....	55
Hance Ranch .....	36	Rocky Mtn Lama Fiber Pool .....	17
Heartland Ranch .....	36	Rosebud Llamas Utah .....	48
Hillcrest Llama Ranch .....	5	Serendipity Farm .....	34,60
Indian Peaks Llamas .....	5,15,55	Shiloh Ranch .....	37
Kiowa Creek Llamas .....	11	Stewart's Royal Alpacas .....	2
Llamapage .....	47	Stillwater Minerals .....	11
Llamas at Last Ranch .....	10	Sugar Creek Llama Ranch .....	11
Larkspur Funny Farm .....	43	Sunshine Acres Llamas .....	28, 50
Linn's Llama Lland .....	16	Switzer-land Farm .....	17
Pheasant Hill Farm .....	15, 19	Trout Creek Llamas .....	28, 59

Tell them, "I saw your ad in the RMLA Journal!". They'll appreciate it.

## Journal of the Rocky Mountain Llama and Alpaca Association Advertising Kit

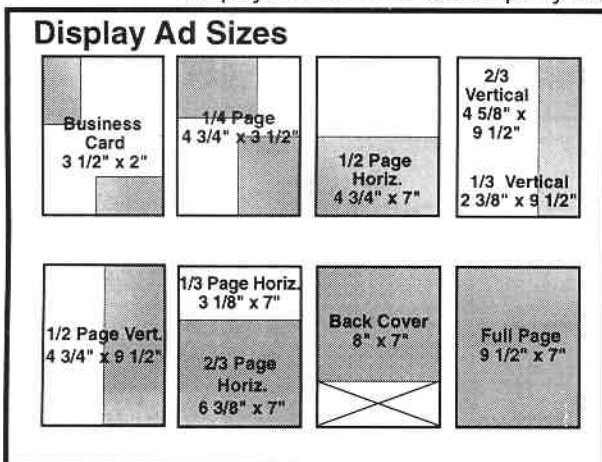
Updated: Jan. 1998

- Photos can be color or black and white, although color is preferred.
- **All layout and design for Journal ads is provided at cost. Pricing is as follows:**  
Business card size-\$5, 1/4 page \$10, 1/3rd - \$15, 1/2 - \$20, 2/3rd-\$25, full page \$30.
- This publication is black and white. Line screen is 115 lines/in.
- Each spring a promotional issue is printed. The center layout and outside cover is printed with a base color. An additional copies are printed for distribution to the public throughout the year.

Mail ads to: RMLA Journal • 38620 CR 29 • Elizabeth, CO 80107-8702.

- One check payable to RMLA, include any design costs – full payment **MUST** accompany ad!

### Display Ad Sizes



### Classified Ads

RMLA Member-	50 words	\$5.00
RMLA non-Member-	50 words	\$10.00
For more than 50 words-		15¢ per word

### Advertising Rates

Ad sizes	1 or 2 issues	Same ad-3 or more issues*
Business Card	\$10	\$10
1/4 Page	\$20	\$18
1/3 Page	\$30	\$27
1/2 Page	\$40	\$36
2/3 Page	\$55	\$49.50
Back Cover	\$50	\$45
Full Page	\$65	\$58.50
inside front cover	\$80	\$72
inside back cover	\$80	\$72
Promotional issue only (with base color)		
Full Page Center layout	\$135/page	
Back Cover	\$115	

\* Multiply amount by number of issues.

# THE (NEARLY) LAST WORD....

**XYZ COMPANY, INC.**  
765 Youngfield Way, Yourtown, KT 79023-1230 471-555-6611

To: YOU!

Date: January 4, 2000

Subject: Vacation Pay

Dear Valued Employee:

Our records indicate that you have not used any vacation time over the past 100 years. As I'm sure you are aware, employees are granted 3 weeks of paid leave per year or pay in lieu of time off. One additional week granted for every 5 years of service.

Please either take 9400 days off work or notify the payroll office and your next pay check will reflect payment of \$8,277,432.22 which will include all vacation pay for the past 1200 months.

Sincerely,  
Automated Payroll Processing.

How's your Y2K problem, now?

*Anybody that can use the above to get a wide grin to a floor rolling laugh, use it!*

# Trout Creek Llamas

BOLIVIAN, CHILEAN, CANADIAN  
AND DOMESTIC BLOODLINES

YOUR TYPE OF ANIMAL –  
FROM PET TO SHOW QUALITY

GUARD ANIMALS

MANAGEABLE AND GENTLE  
DISPOSITIONS

CORRECT CONFORMATIONS

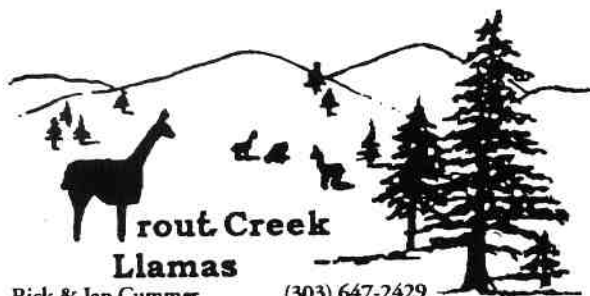
VISITORS ALWAYS WELCOME!



*AM I CUTE OR WHAT?*

BOARDING  
IN THE  
COOL ROCKIES

COMFORTABLE  
ACCOMODATIONS  
FOR YOUR  
MALES AND FEMALES

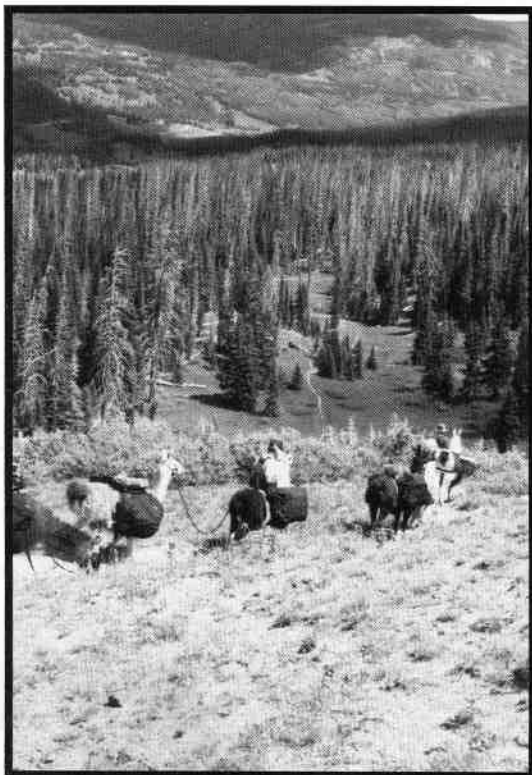


Rick & Jan Cummer (303) 647-2429  
P.O. Box 6848 • Woodland Park • CO 80866

# Trained Pack Llamas

## Only 5 left

*They've been across the hills...*



*up the hills...*



*and down the hills.*

On consignment from Kelly Scott. (Kelly is going in for back surgery and will be out of commission for a couple of years.)

Interested? Call Serendipity Farm at 303-646-2665  
800-576-1799, or e-mail at: [sdflama@bewellnet.com](mailto:sdflama@bewellnet.com)

*Easy to halter, good boys,  
all gelded, 6-11 yrs old.*

RMLA  
11818 W. 52nd Ave.  
Wheat Ridge, CO 80033-2032  
Address Service Requested

U.S. Postage  
PAID  
Kansas City, MO  
Permit No. 6035