

**JOURNAL**  
OF THE

**RMLA**

February  
1997



**ROCKY MOUNTAIN LLAMA AND ALPACA ASSOCIATION**



# SERENITY LANE LLAMAS



Since 1984



## **YOU DON'T HAVE TO PAY TOP DOLLAR FOR TOP QUALITY!**

Looking for something just a cut above the ordinary -- look no further. Your Colorado neighbors at Serenity Lane are raising some outrageous woolies at 9000 feet.

A wide selection of Chilean, Bolivian, Peruvian and select North Americans are available — year round.

A limited number of breedings are available to our gorgeous Chilean, Bolivian and N. American sires.

Located in the shadow of Pikes Peak — just 25 miles Northwest of Colorado Springs.

Let us know when you're coming!

**Bill & Donna Brown**                      **719-687-1224**  
**15293 West Hwy. 24 • Woodland Park, CO 80863**

In this Issue.....

**Calendar of Events 6**

**HOW CAN I DO BETTER IN LLAMA COMPETITION? 15**

**KETSIA 26!**



**RMLA FIBER POOL & FIBER GRADING WORKSHEET 46**

*Fiber!*



**LLAMAPAEDIA 45**



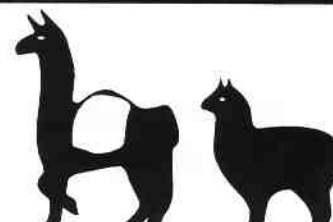
**RMLA IS ON THE NET! 26**

**Internet**

**1997 NATIONAL WESTERN LLAMA SHOW RESULTS! 34** *7 pages*

**GELDED: HAPPY TIMES ARE HERE AGAIN 18**

**ROCKY MOUNTAIN LLAMAS "ADOPTS A ROAD" 52**



**ALSO!**

Wool and the Wool Market – a Value-Packed Shawl of Many Textures .....	10
What about those Conerstone Studs? .....	12
Caring for Llamas and Alpacas update .....	14
Lamas in the News .....	22
Just for Kids! .....	41
Lamas in the News .....	40
RMLA Consolidated Financials .....	43
The 4-H Corner .....	50
Classified Ads .....	57
New Members .....	59
RMLA Membership Form .....	61
RMLA Journal (advertising) Media Kit .....	62

# Rocky Mountain Llama and Alpaca Association

## Board of Directors

<b>President</b> Linda Kyriopoulos 2680 West 5700 South Mt. Sterling, UT 84339 (801) 245-3529	<b>President-Elect</b> Bob Riley P.O. Box 1189 Lyons, CO 80540 (303) 823-5409	<b>Vice-President</b> Jerry Dunn 14550 W. 50th Ave Golden, CO 80403 (303) 277-1129	<b>Secretary</b> Julie Messick 7411 North Road 2 East Monte Vista, CO 81144 (719) 852-4852	<b>Treasurer</b> Lougene Baird 2210 Pine Wood Road Sedalia, CO 80135 (303) 688-1887
---	---	--	--	---

## Other Volunteers

<b>RMLA Library</b> Sharon Herbold 15350 Highway 83 Colorado Springs, CO 80921 (719) 495-3092	<b>Journal Photographer</b> Bob Riley P.O. Box 1189 Lyons, CO 80540 (303) 823-5409	<b>Caring for Llamas &amp; Alpacas and 4-H</b> Julie Messick 7411 North Road 2 East Monte Vista, CO 81144 (719) 852-4852	<b>Membership</b> Judy Sealy 593 19-3/4 Road Grand Junction, CO 81503 (970) 241-7921	<b>Journal Editors</b> Ron & Marie Hinds 9349 Tammy Lane Parker, CO 80134-7511 (303) 841-4889 (303) 841-7635 fax
--	--	--	---	---

## Committees

<b>Committee</b>	<b>Liaison</b>	<b>Chairperson</b>
Finance	Bob Riley	Sandy Hackbarth
Continuing Education	Jerry Dunn	Jan Redenbarger
4-H and Youth	Linda Kyriopoulos	Linda Kyriopoulos
Marketing	Rob Riley	Jim Osmun
Nominations/Elections	Linda Kyriopoulos	Craig Dierksen & Rosie DeLullo
Research	Bob Riley	Ron Baird
By-Laws	Jerry Dunn	Jo Riley
Fiber	Julie Messick	Sharon Beacham
Membership	Jerry Dunn	Judy Sealy
Library	Lougene Baird	Sharon Herbold
Events Committee	Julie Messick	<i>(Chair Open)</i>
Publishing	Lougene Baird	Journal: Ron & Marie Hinds

## Journal Staff Editors: Ron and Marie Hinds

**Associate Editors:** Marilyn Arnold, Sharon Beacham, Bob and Barbara Hance, Stanton Lacher and Gail Segreto, Candy & Tracy Montgomery.

<b>Journal Deadlines</b>	February issue ..... January 1	August issue ..... July 1
	May issue ..... April 1	November 15th issue ..... October 15th
	Big Issue ↗ January issue ..... December 1	



© 1997 The Rocky Mountain Llama and Alpaca Association



Reproduction of articles herein is authorized subject to written permission being obtained from the individual authors.

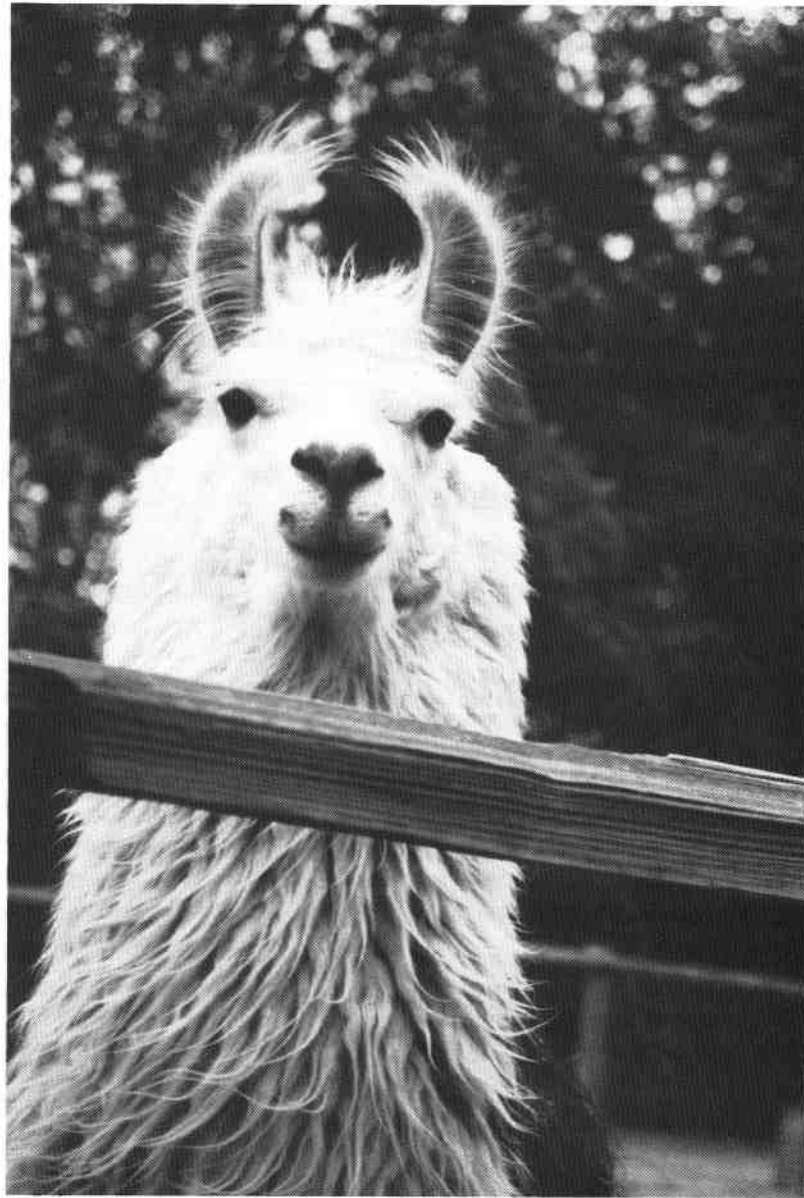
"Exchange Newsletters" may reproduce articles as needed so long as the author and the publication is given credit for the original work. Exception: Articles denoted with "All-Rights-Reserved" must get approval from the author.

**NOTE:** The information contained in this Journal is not intended to be a substitute for qualified professional advice. Our readers are encouraged to consult with their own veterinarian, accountant, or attorney with any questions concerning their animals or business operations. RMLA is not responsible for any losses resulting from reader's failure to heed this caution.



# MCF SNOWY MOUNTAIN MAN

ONE OF CRAZY MOUNTAIN MAN'S FINEST!



## OTHER GOOD REASONS TO VISIT US!

BREEDING SERVICES! RANCH GUARANTEE!  
OFF-SPRING FOR SALE! FREE BREEDING TO  
FEMALES PURCHASED FROM US!  
DISCOUNTS FOR MULTIPLE PURCHASES!

### GRAND VALLEY LLAMAS

Judy & Curt Sealy  
593 19-3/4 Road  
Grand Junction, CO 81503  
Phone/Fax (970)241-7921



# “Calendar of Events”

**LANA Llama Wool Open Judging & Competition - DEADLINE IS May 20th** One ounce of fiber submitted by entrants in four divisions will be judged and spun into a skein of yarn. Entries will be displayed along with judges comments, ribbons and photos of the animals at this years **LANA EXPO '97** in Carson City, NV (See July 17 -20th below). Judge will be Tricia Clair, Newburg, OR. Danish System of judging will be used, awarding Blue, Red and White awards to those who qualify. Additional rosettes will be awarded to the Best in each division and a Best of Show award will go to the entry earning the most points. For an entry form and instructions send a #10 self addressed stamped envelope to LANA WOOL, c/o Watson Farms, 1984 Greenview Dr., Escondido, CA 92026.

**April 12th; Llama Private Treaty Sale & Bazaar with FIBERFEST** Gold County Fairgrounds, Auburn, CA. Llamas and Alpacas for sale, vendors, demos, wool products in conjunction with The Sierra Shepards. Covered facilities available in case of showers. Ranch displays encouraged. Reserve space now! For details call (916)273-2998 or (916)273-2568. Free to the public.

**April 19th - 20th; ALSA Show Clinic, Boise, ID** Contact Dick Sheehan, 60 E. Clear Creek Drive, Meridian, ID, 83642, (208)888-4410 Deadline is April 1st.

**May 3rd - 4th; WILA Jubilee, Western Idaho Fairgrounds** Call Nancy or Wayne Cobler for info at (208)922-4203.

**May 3 -4, 10 - 11, 17 - 18: Learn-to-Shear and Humane Grooming Clinics, Boulder CO** Free. Learn the basics of hand and electric shearing and minimal-stress grooming. Bring your own llama or practice on one of ours. Please call for details and to make your reservations. Pheasant Hill Farm, John and Sharon Beacham, (303)666-9437 (Denver area) or 1-800-465-2567

**May 23, 24, 25, 26; John Mallon Training Clinic, Boulder, CO** Pheasant Hill Farm and Rocky Mountain Llamas are again sponsoring this annual event. Still the only location in the Rocky Mountain area. Levels 1 and 2 will be offered on consecutive days. For detailed information and reservation packet, call Sharon Beacham, (303)666-9437 or Bobra Goldsmith, (303)530-5575

**May 23rd-25th; Intermountain Llama Classic, Farmington, Utah; Davis County Fairgrounds.** Sponsored by the Utah Llama Association and cosponsored by RMLA. 6th annual ALSA show, moved this year to the Davis County Fairgrounds just north of Salt Lake. Easy access from interstate or airport. Near Lagoon Amusement Park. Fun for the entire family! Pre-show clinics, auction, and lots of fun! Western regional qualifier, judged by Ron Baird. Lodging near or camping available at fairgrounds or KOA at Lagoon. Call Linda Kyriopoulos at (801)245-3329 or Daryl Wood at (801) 846-2323.

**May 23rd-25th; Millenia Llama Sale, Monroe, MI, McRoberts Game Farm** Millenia Sales Corp/Twin Lakes Llama Ranch present the 1st annual Millenia Llama Sake featuring the McRoberts Game Farm 1st Annual Production Sale and full South American consignment sale. Ranch displays, vendors, stud row, all weekend. 23rd-Llama Sale Preview all day, Yak, Elk and wild game dinner 5:30 PM, hosted by McRoberts Game Farm. 24th - 11:00 AM Llama auction of 100 llamas featuring Col. Stanley Stout, Auctioneer. 25th - Twin Lakes Llama Ranch Peruvian import open house. More more information contact Mark Brant (313)241-4621 (313) 241-7734 fax

**May 24th; Great Western Roundup Llama Auction; Farmington, UT, Davis County Fairgrounds** A great selection of quality llamas presented for sale during the Intermountain Llama Classic just north of Salt Lake. Easy access from airport or interstate. Come for the entire weekend! Next to Lagoon amusement park, bring the family and have some fun! Call sale organizer, Steve Kyriopoulos for information at (801)245-3529. See page 19.

*Continued on next page*

**June 6th - 8th; 2nd Annual Rocky Mountain Alpaca Roundup at the Estes Park Wool Market, Estes Park, CO - Fairgrounds.**

Sponsored by The Alpaca Breeders of the Rockies, this event features an Alpaca ALSA show, fleece judging, barn demonstrations and educational seminars on Alpacas. Plan to visit Estes Park and get some hands-on with Alpacas. ALSA judge will be Carol Hicks. For more information or registration call Marie Hinds, (303)841-4889 or write "ABR", 9349 Tammy Lane, Parker, CO, 80134-7511.

**June 7th - 8th, 1997: Estes Park Llama Show at the Estes Park Wool Market, Estes Park, CO - Fairgrounds.**

Sponsored by RMLA. Come visit the beautiful Rocky Mountains and participate in the largest Llama show. This long time ALSA show has always been a wonderful event for Llama lovers. For more information contact Jo Riley at (303)823-5409 or Lougene Baird at (303)688-1187.

**June 11th - 15th; Alpaca Owners and Breeders Association Annual Meeting, Pueblo, CO - Colorado State Fair - Fairgrounds.**

Conference Packets will be mailed in early spring to members. For more info contact: Hobert Office Services, 1140 Manford Ave., P.O. Box 1992, Estes Park, CO, 80517-1992, (970) 586-5357, (970)586-6685 fax.

**June 18th - 22th ILA Annual Conference, Bend, OR.** Three days plus of speakers, demonstrations, product display booths and llama exhibits. Pre-conference workshops and activities on June 18 and post-conference activities on June 22. Full registration materials will be sent to all ILA members in March. For more info contact ILA at (303)756-9004

**July 12th - 13th; Northwest Llama Classic Sale and ALSA Show, Monroe, WA - Evergreen Fairgrounds.** For more info contact Marilyn Larson at (360) 428-8098 (702)428-5601 fax or newhorzn@sos.net.

**July 17th - 20th; LANA EXPO '97, Carson City, NV - Fuji Park.** Seminars, show clinic and llama olympics on Thursday and Friday. ALSA sanctioned show will be held Saturday and Sunday, and is open to the public. Camping available, family oriented, BBQ and picnic get-togethers. For more information contact Nelson Leonard at (541)830-LANA or for show details contact Virginia Christensen at (702)265-3177 ----- Contact Debbie Ullrich at (916)832-6362 to volunteer!!! ALSO: LANA Llama Wool Open Judging & Competition - Deadline is May 20th (See first event above.)

**October 18; Llama Private Treaty Sale & Bazaar with Fall Fiberfest, Auburn, CA, Gold Country Fairgrounds** Llamas & Alpacas for sale, vendors, demos, wool products in conjunction with The Sierra Shepards. Under the trees at the beautiful Gold Country Fairgrounds in Auburn. Covered facilities available in case of showers. Ranch displays encouraged. Reserve space now! For details, call (916)273-2998 or (916)273-2568. Free to the public.

**Candy & Tracy  
Montgomery**

1001 Haystack Drive  
Castle Rock, CO 80104

**(303) 688-2422**



**Breeding for the Finest in COLORED Alpacas**



*Santa Rosa Alpacas*

**Jeannie Flavin  
Owner/Breeder  
(303) 838-7513  
Voice or fax**

25788 Richmond Hill Rd • Conifer, Colorado 80433

The nickle and penny aren't of much value nowa-  
days, but the dime makes a good screwdriver.

*anon.*

# THE SPRING ISSUE OF THE RMLA JOURNAL



The Spring/Promotional issue will be included with every retail sale of **Caring for Llamas and Alpacas.**

In addition, the Spring Promotional Issue is handed out at:

Estes Park Wool Market Llama and Alpaca show - June

RMLA Conference - October

National Western Stock (Llama) Show - January

Taos Wool Festival - September

AOBA Conference - June

Everywhere the traveling RMLA Display goes all year, and a lot of other events all across the RM area.

Remember you get by-line advertising when you send in articles.



Get your ads in now.

See page 62 for new ad sizes but same low rates. Deadline for camera ready ads is April 1, 1997. If you need your ad designed (free) send it in by March 15th.

It takes your enemy and your friend, working together, to hurt you: the one to slander you, and the other to bring you the news.

- Mark Twain

## Plum Valley Llamas

Lougene and Ron Baird  
Kristin and Deidre

2210 Pine Wood Road  
Sedalia, Colorado 80135

Phone: 303-688-5445  
Fax: 303-688-6814

*ALSA Champion lines ... for every need ...  
at reasonable prices*

## WANT TO GO PACKING THIS SUMMER?

Get ready now with this complete package that includes everything:

- 2 Sopris pack saddles (leather billet strap cinch).
- 2 Sets of Sopris saddle pads.
- 2 Sets of chest strap and breeching.
- 2 Sets of Deluxe panniers.
- 1 Rain cover for panniers.
- 3 Halters and lead ropes.
- 1 Bungee pack string loop.
- 1 Sopris riding pad (for children to ride llama).
- 1 Load scale.
- 1 2.5 gallon collapsible water bucket.
- 1 Llama trailer (holds 3 to 4 llamas, not a horse trailer, built for llamas).
- 3 Llamas (2 - 2+ years old with some training, 1 - 13 year old trained packer).

Will sell above package for \$3,395 but would also consider a modified package that would better suit your needs.

**Call for details (970) 882-1464**

Will deliver in Colorado or to surrounding area.



# LIMITED BREEDINGS AND SHOW QUALITY OFFSPRING FOR SALE

HBL GULLIVER



Half Chilean

A proven producer and show winner from the great Chilean LeRoy Brown

*Presence • Size • Fiber • Color • Disposition*

Unsurpassed Pedigree

Proven in the Show Ring and Proven Show Winners  
Chilean LeRoy Brown x Baie Fine

MACHO BLANCO



Full Chilean

A proven producer to improve any program  
Tremendous fiber, bone, conformation, etc. He produces it all .....

Call for Breeding Dates in Divide, CO

Years of Proven Pedigree

Macho Camacho x Chi Chi

LW SANTA FE



Full Bolivian

The most outstanding wool we have seen on a Llama. He is from the Llama Woods program. Very Select Breedings for 1997. Call for Details on Breedings.

Pedigree from one of the Top U.S. programs

LW Kissam x LW Sangria

Ken and Lucy Rogers  
Shephard's Choice Llamas  
2068 County Road 512  
Divide, Colorado 80814  
(719)687-1151 or 1155

Bon and Cindy Burgess  
Feathers & Friends Farms  
7120 County Road 73  
Lubbock, Texas 79424  
(806)798-8310

*We welcome your visit to see our Southern Cross Breeding Program  
Backed by Guarantees and Service*

# WOOL AND THE WOOL MARKET a Value-Packed Shawl of Many Textures

By Robbie Guidry  
Alpaca Breeders of the Rockies

---

*The Estes Park Wool Market is being held at the Fair Grounds in Estes Park, CO June 6, 7 and 8, 1997.*

---

**W**hy in the world would someone want to attend a wool market? Because our past, present and future lies there. Other wool growers meet, discuss, compete and learn at such events. They have been about this business for a long time, and understand value adding. By adding innovative processing steps to their raw product, they can broaden their marketplace and increase profits. The pepper growing McIlhenny's in Louisiana knew about this concept when they began pickling their produce in salted oak vats to create Tabasco. North Dakota farmers understood this concept when they kept their best wheat to package their products under the name "Pasta Growers."

We have a shared past with other wool growers who have gone before us. We can benefit from their experience if we could only go beyond our alpaca community. Wool associations, institutes, laboratories, manufacturers and producers hold a wealth of information right at our fingertips. They hold the key to adding value to our wool. They hold the key to our future.

The Estes Park Wool Market is a learning and networking festival. The events brochure is an ideal resource for adding value to all wool products. It features in depth wool workshops on spinning, weaving, felting, dyeing, blending and designing with a wide assortment of natural fibers. There are several spinning events, a sheep to shawl contests, as well as alpaca and sheep fleece competitions. There is a fashion show spot-lighting American hand-crafted woolens. Last but not least, there are livestock competitions with goats (pygora, cashmere and angora), sheep (karakul, colored and white), rabbits as well as llamas and alpacas.

Among the Estes Park Wool Market sponsors is the Alpaca Breeders of the Rockies. We are hosting the alpaca fleece judging and the alpaca ALSA show. We will host a wool products booth in the vendor's barn. The alpaca sale tent will provide on-going wool and farm management demonstrations and a livestock exhibit. We also host a festive banquet at the Aspen Lodge.

Just as a lovely hand-woven shawl emerges from many different textures, techniques and traditions, so does the alpaca community. We are part of a common ancestry of proud wool growers. We invite you to join us and all the other fiber folks in this celebration of learning.

For more information about the Alpaca Breeders of the Rockies at the Estes Park Wool Market call or fax Robbie Guidry (970)482-0350.



## BROKEN "B" RANCH LLAMAS

St. Maries, Idaho 83861  
Route 2, Box 91  
208-245-2490 / 245-3488



STAN EBEL

P.O. Box 64

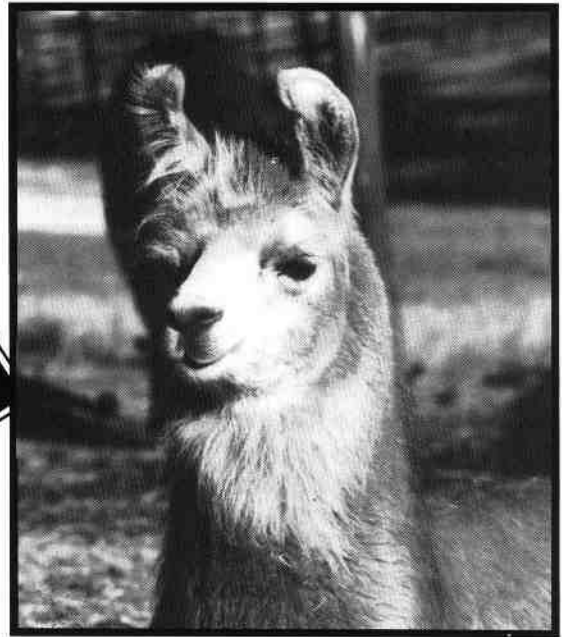
Masonville, CO 80541

303-667-7411

**Little Big Man** is one of our Prize Winning offspring of our champion herd sire, **Five-Star**. Our small size gives our llamas the advantage of more hands-



on care. They are all friendly, well-mannered and manageable. We offer a variety of colors, styles and ages. Visit and see for yourself the special qualities in the llamas we have for sale.



Select your llama with confidence. We offer our support long after you take your llama home.

## Join a Llama Fiber Pool

Get that llama fiber out of your closets or storage lofts and into a fiber pool. Llama pools are in the works all over the country and we are trying to get the word out to YOU that you don't have to store or throw away that fiber. Some pools will buy quality llama outright, others will share in the yarns, and yet others produce finished items, etc.

To find out what your area llama pools are doing, write or call your regional contact person.

### West

Perky Fisher  
Rocking Horse Llama Co.  
9025 Rodden Rd.  
Oakdale, CA 93361  
(209) 847-3474

### Central Mountains

Sharon Beacham  
Pheasant Hill Farm  
2380 95 St.  
Boulder, CO 80301-4937  
(303)666-9437

### Mid-West

Jenny Deters  
Hickory Hollow Llamas  
P.O. Box 624  
Chandler, IN 47610  
(812)925-7801

### East

Elena Stamberg  
Graceful Legend Llamas  
P.O. Box 379  
Barnesville, MD 20838  
(301)349-3149

We are here to help organize llama fiber use all over the country for that national llama co-op. If you have a pool started and you want to be included on our sharing list, please let us know.

The business of government is to keep the government out of business—that is, unless business needs government aid.

-Will Rogers

Cache La Poudre



## MINERALS

Call Now to Order  
or receive a brochure:

800-758-0825

970-493-2335

## Insure Your Lamas' Health for Pennies per Day!

Cache La Poudre Minerals are free choice supplements  
formulated specifically to balance your lamas' diet.

Includes these essential elements:

- ★ **Selenium**—recommended amount for selenium deficient areas
- ★ **Vitamin D3**—necessary for bone growth and tooth structure
- ★ **Zinc**—for immune function and healthy skin and fiber
- ★ **Vitamin E**—for selenium absorption, fights stress and disease

**ECONOMICAL! Costs less to feed per day than other  
free choice minerals or pellets with comparable guaranteed analysis.**

### Supplement #1:

Diet: Late or non-irrigated summer, fall,  
or winter pastures; feeding grass hay.  
Contains a 2:1 calcium/phosphorus ratio  
and additional Vitamin E.

25 lbs, \$29    50 lbs, \$55

### Supplement #2:

Diet: Late or non-irrigated summer, fall,  
or winter pastures; feeding alfalfa or a  
grass hay low in phosphorus. Contains  
additional phosphorus and Vitamin E.

25 lbs, \$29    50 lbs, \$55

### Supplement #3:

Diet: Spring or irrigated pastures; feeding  
alfalfa or a grass hay low in phosphorus.  
Contains additional phosphorus and  
recommended basic level of Vitamin E.

25 lbs, \$24    50 lbs, \$45

**NEW 200 lb. PRICE: #1 or #2: \$198, #3: \$162 • PLUS SHIPPING**

## WHAT ABOUT THOSE CORNERSTONE STUDS?

*Reprinted from the COLA Newsletter • November/December 1996 • Page 17*

Substitute "light to medium fleece" for "cornerstone," and it's a good bet there aren't many GPLA breeders who still have a working "cornerstone," stud in their breeding program. Males without an overabundance of wool, regardless of their quality, are the least expensive llamas in the central plains region. How many times have we heard a breeder say (or said it ourselves), "He doesn't have the wool, but he'll make a nice gelding."

It's rare indeed to see a "cornerstone" male exhibited with pride on stud row, or bring more than a few hundred dollars in the auction ring. Yet many of us have built our foundation herds on the offspring of these studs that have passed on their superior conformation, strong bone and muscle and gentle dispositions.

Far too often we judge a male llama by his wool cover—or lack thereof. We tend to confuse "undesirable" with "light wool." Unfortunately, new llama buyers with an undeveloped eye for stud-quality males can be misled into thinking that "the only great stud is a woolly stud." Seldom are we truly honest enough to geld a super-woolly male with undesirable traits to insure he will not be used for breeding.

Cathy Spalding's (Those Cornerstone Girls) plea to re-define, re-educate and re-market our "cornerstone" girls should also apply to those less than woolly studs that have consistently produced sound, healthy, conformationally correct breeding stock.



3709 W. Cty Rd. 50  
Fort Collins, CO 80521

Michael & Robbie Guidry  
(970) 482-0350

## Cottonwood Farm Alpacas

Sales  
Breeding

Fiber  
Boarding

alpacas@frii.com

## NORTHERN COLORADO LLAMAS

### NORTHERN COLORADO LLAMAS

Darrell Newton

970-482-7697

970-484-7209

996 Deer Meadow Way Livermore, CO 80536

# Gift Certificates for TTEAM Training for Llamas, Alpacas and Humans with Dale Pettigrew

Certificates for a one-day clinic or  
two hours of individual instruction.

\$60.00

**A GREAT GIFT FOR**

- new llama owners
- llama-owners-to-be
- 4-Hers
- your veterinarian
- llama friends who haven't tried TTEAM
- llama friends who have tried TTEAM and want more
- your spouse
- yourself
- your llamas
- your alpacas

TTEAM is fun and effective. Guaranteed to improve your relationship with your llamas. Learn safe, non-forceful, effective techniques to teach your llama to halter, lead, load, pick up feet, pack, be groomed or medicated without restraint.

Give one with every purchase of your animals.

Contact Dale Pettigrew, 970•493•2335

Overland Trail Llamas, 168 Emerald Mtn. Ct., Livermore, CO 80536

## IT'S HERE! THE ONE, THE ONLY PHOTO WORKSHOP FOR LLAMAS by Susan Ley

**A Great Workbook!**

*Written by camelid photographer Susan Ley, this is a MUST for every animal photographer who wants to produce excellence with their camera.*

The workbook is broken down into easy to follow lessons written in clear, concise language and illustrated with over 70 photographs. Susan's step by step approach insures that you understand every aspect needed to take winning photographs of your animals. If advertising shots are what you need, this workbook is for you!

### LEARN:

- What type of light is best for animal photography.
- How to create great composition.
- What film, camera and equipment is the best to use.
- How to find a good background.
- How to understand your meter and get correct color with those hard to capture animal colors.
- How to take a great advertising shot.

The workbook is designed so beginning to advanced "hands on" field students can jump in and participate in exercises for each level of expertise. This means YOU can immediately begin to learn at your present level!

Send name, address with \$29.95 + \$6  
S&H (Ohio Res. add 5.75% Sales Tax) Pay-  
able to Susan Ley Photography) to:  
**Susan Ley Photography**  
8685 Hawick Court N. Dublin, OH  
43017 Phone/Fax (614) 889-0629

# Caring For Llamas and Alpacas Update


by Julie Messick • Lla Mariposa Llamas • 7411 North Road 2 East • Monte Vista, CO 81144 • 719-852-4852

---

What a great year for Caring For Llamas and Alpacas this has been! Our much-anticipated, newly revised edition of Caring For Llamas and Alpacas arrived from the printer on May 1. In the period from May 1 to Dec. 31, we sold 1,852 copies of the new books! Several Veterinary Schools have ordered quantities to use in their course work. It's also encouraging to see how many new owners are ordering our book. An RMLA Service Directory, the white "Llamas" brochure, Special Edition (May '97) RMLA Journal, and RMLA fiber coop brochure goes out with each book to these new owners.

That brings up my next point- it's also discouraging to see how many new owners have to search all over to find information on how to care for their new llamas. They have had little or no support from the sellers. PLEASE.. if you're going to sell an animal, either give them a copy of Caring For Llamas and Alpacas (our Youth Manuals also are informative and inexpensive to hand out) or let them know where they can purchase a copy. We have CFLA flyers and order forms that you can hand out; give me a call and I'd be happy to send you some. Our animals deserve the best care, and owning this book is the place to start.

---



**COLLEGIATE  
P.E.A.K.S  
LLAMAS**

SUSAN & JOE GREINER  
P.O. BOX 1550  
BUENA VISTA, CO 81211  
719-395-2112

**Itty Bitty Ranch**  
Llamas raised with love!!

The Paerschke-O'Brien Family  
Owners, Managers, and Caretakers



Box 377  
Blackhawk, Colorado 80422  
(303)-582-3498  
Fax (303)-466-4544

# HOW CAN I DO BETTER IN LLAMA COMPETITION?

By Adrienne Bergenfeld

As I start my third year of llama competitions, my first year as an intermediate, I would like to share some ideas with you. My first year working with llamas was scary, confusing, and complicated. The second year, I knew more, felt more comfortable, and placed first in showmanship in four contests. However, by not following my own guidance, I did not place in showmanship at regionals. I made my second year better by setting goals, and always going into a competition willing to listen to others' critiques and compliments. By sticking to my goals, I learned from knowledgeable people as well as gaining experience with each competition. In addition, there was the growing love between myself and my llama.

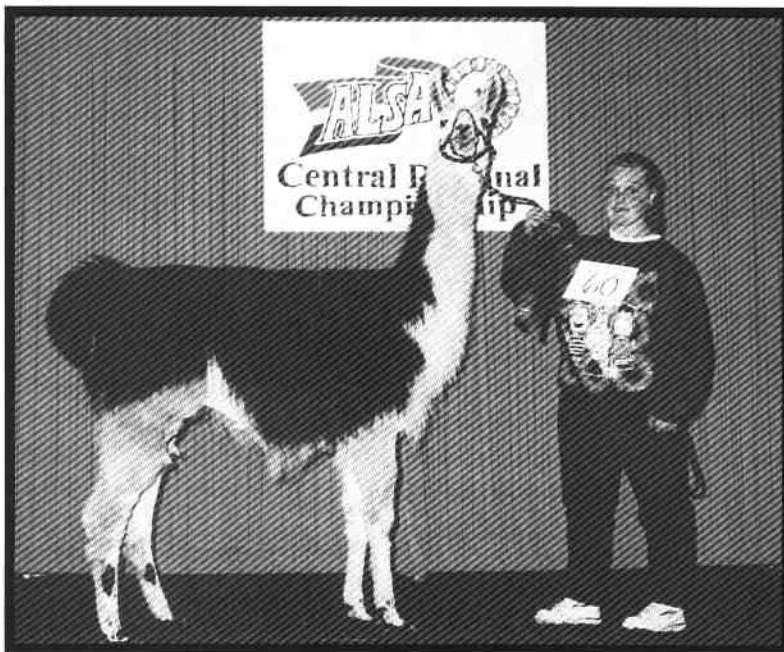
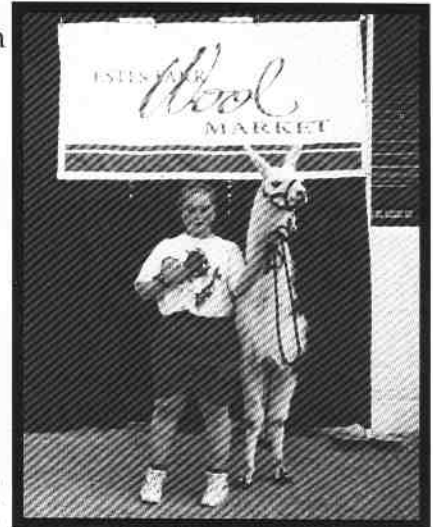
This past year, I had two main goals. First to develop a close bond and trust with the new llama I would be using and second to improve in showmanship; not necessarily to

placed in showmanship because it was new to me, I didn't think it was fun and the llama I was working with felt that. Then, last year, I decided to relax, do my personal best, and not worry about winning. Yes, it sounds like something a parent would say. But when I thought in those terms I did better and enjoyed myself more. When I felt comfortable, I appeared to be more professional and my competition results reflected that. The best

way to learn is from others who are more experienced and knowledgeable than you are. I have met a lot of great people through "critique sessions" after a showmanship class. By listening to and acting on all the critiques, both good and bad, I was able to go into the ring and feel more comfortable about myself and my llama.

Without a llama's complete trust, and confidence in your own and the llama's abilities, you will not do well in performance classes. You and the llama must flow as one. You can't fail to be frustrated when you have to ask to be excused from the performance ring because your animal

won't even leave the waiting area to start the course. I began my second year of competition with a ten month old male that had not been worked with much. PPW Domino was stubborn, timid, and, in his own way a big baby. However, we seemed to bond. Like other large animals he has moods and will



place better, but to feel more comfortable with it. These were not goals that could be done on my own, but needed the assistance of a very special friend, my llama.

In my first year of competition, I seldom



*How can I do Better...., cont.*

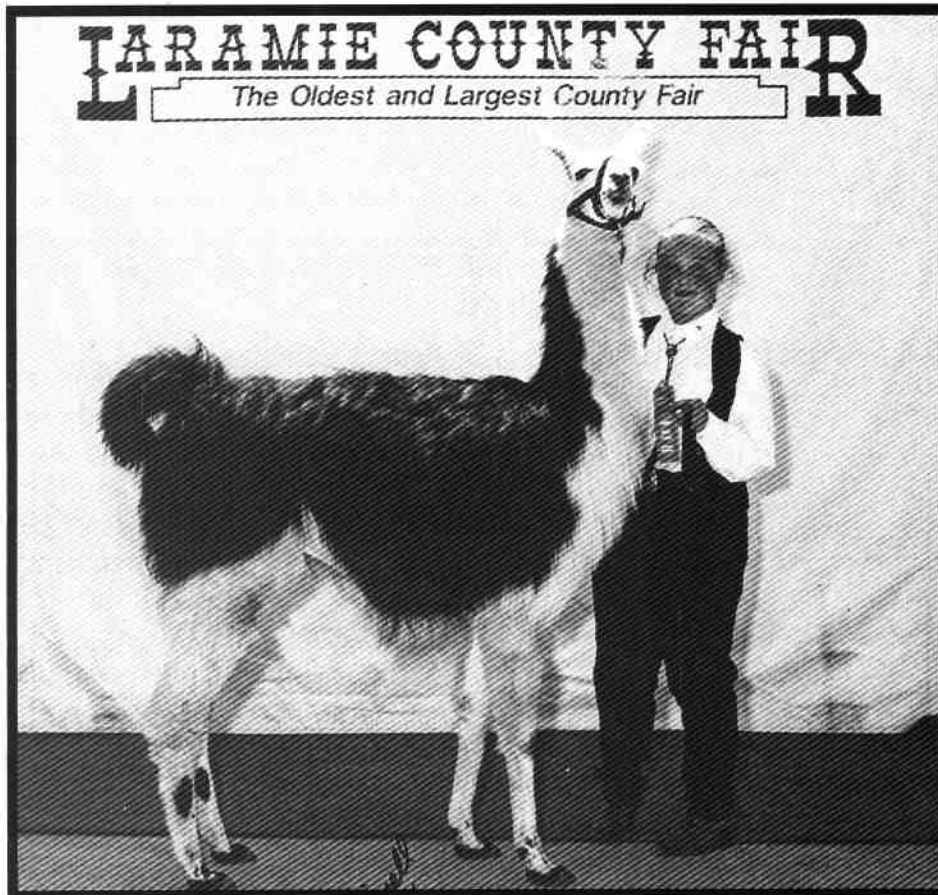
react differently to obstacles he encounters in his life. The more you work with your llama the better he will do because he



knows that you will not intentionally lead him where he will become injured. Gaining trust with the llama doesn't happen over night. It takes time, and there will still be times when the llama will question you.

Some animals have a fear of a certain object. That fear is very difficult to overcome. This takes even more persistence and trust than other objects may. Try it over and over again and don't get frustrated. The best lesson I learned is never give into the llama; you must always be in charge. This may cause you to spend more time with the animal than planned, but when the animal accomplishes that obstacle, you realize why you love these peculiar animals.

I've proved to myself that setting goals improved my self esteem and encouraged me to push for what I wanted. The goals gave me direction and helped me to learn more and gain respect for everything related to llamas.



Adrienne is 14 and lives with her mom and dad, Maureen and Steve at 724 Saddle Mtn. Rd. in Colorado Springs [80919 (719)522-0347]

Adrienne works with Herbold's llamas, Pikes Peak Woolies, just NE of Colorado Springs.

Adrienne is very active in 4-H and is a near straight A student at Academy HS. She also enjoys cooking and raising Guinea Pigs.

**Adrienne's current llama show stats:**

- She is in 6th place in Junior Public Relations in the nation.
- In Junior Showmanship she is 3rd in the nation.
- In Junior Obstacle she is 7th in the nation.

(A picture of Adrienne at the 1997 National Western is on page 34.)



# Pulled off the Internet.....

*The following was pulled off the internet llama chat group. I was alerted to the posting from Wally White (via e-mail) and suggested it be published in the next Journal. ed*

Hi!

In reading through the September issue of the LANA NEWS, I came upon this article by Norman Evans, DVM. Given the previous discussion on this list regarding the vaccination/worming of pregnant females prior to delivery, I thought this would be of interest to share.

Best Regards,  
Cathy

"The following is a letter submitted by Dr. Norman Evans to Llama Wellness Services, Madisonville, Kentucky and reprinted from the Missouri Llama Association Newsletter, March, 1996"

"This letter is to advise you of our current thinking regarding the herd health of your pregnant females. During the past two years, my records indicate that about 7-8% of the females vaccinated or dewormed deliver early (within one to ten days of the herd health procedure). This is most common in females who have been dewormed and/or vaccinated four times or more. This early birthing seems to occur with about equal incidence in females that receive only deworming or vaccination. The incidence does not seem to increase when both deworming and vaccinations are administered at the same time. The incidences seem to be slightly higher (about 2%) in females receiving Covexin 8 as opposed to CD/T.

The incidence seems to be very equal in females receiving Ivomec injections, Panacur oral and Valbazen oral. These early deliveries seem to be most common in females treated four to six weeks prior to birthing. These observations and information have been collected in animals due to birth in March through June. Heat is not thought to be a factor in the early deliveries scheduled March through June.

Many owners feel that they are providing these procedures to their llamas as stress free as possible. I can only assume that these procedures are creating a stress abortion. Animals injected with Scourguard 3KC seem to show about 15% incidence of early delivery. Normal dosages of both vaccines and wormers have been utilized. At this point in time, it does not seem that dosage is a major factor in creating early delivery.

For these reasons, I suggest that you do not vaccinate in the first sixty days or last sixty days of gestation. Many female llamas seem to maintain a nice titer of protection to Clostridium C & D when only vaccinated with a 5cc booster once a year. Some breeders are trying vaccinations only during the 14-19 day period between birthing and breeding. This procedure does not address possible problems created by the administration of Ivomec, Panacur or Valbazen. These observations have not been noticed with females utilizing Strongid C as a parasite control product. This information may be helpful in planning your herd health management."

Cathy Spalding  
Gentle Spirit Llamas  
Olympia, WA  
catspa@cco.net

# GELDED: *Happy Days are Here Again*

By Maggie Merrill Brown • Parker, CO • 80134

Happy days are here again! As we watch our little herd of four males romping playfully in the pasture, we remember that not too long ago we were watching some pretty rough behavior. Let me explain.....

The decision whether to geld our llamas was initially made when we purchased the first two boys, Silver Streak and Whiplash. We took into consideration our purpose for owning llamas—for hiking and packing



Silverstreak and Whiplash - before 'testosterone production'. (Note the fiber on Silver's neck, compare to below.)

rather than breeding—and the matter seemed to be resolved. By reading substantial material about the pros and cons, we learned

that it was important to wait until the llamas were at least two years old to ensure that gelding would not interfere with normal bone development.

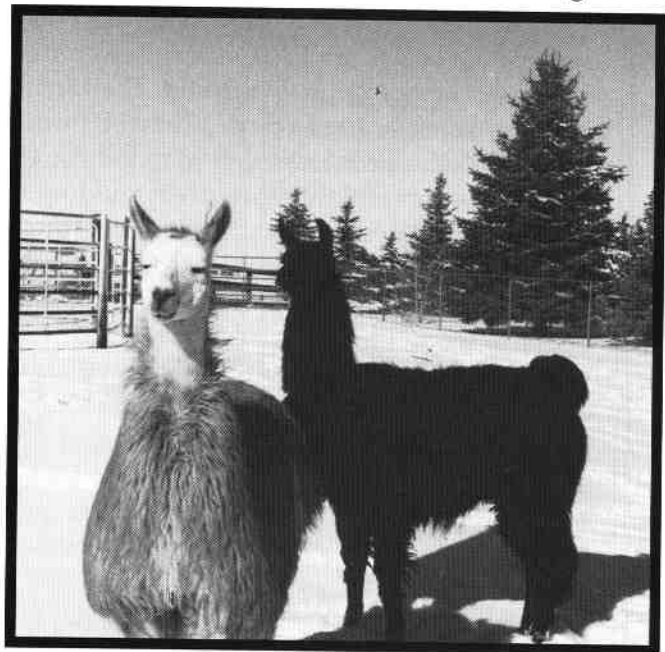
Then we made some new "llama friends" who had three intact males, each about three years old. Marilyn and Hans Arnold use their llamas for hiking and we have gone on a couple of fun outings with them. They planned to leave their boys intact since they had experienced no significant problems with aggressive behavior. We decided to take a "wait and see" attitude about the whole subject.

As the first two llamas neared two years of age, we acquired two more boys, who were almost a year old, from Stan Lacher and Gail Segreto of High Hopes Llamas. After keeping them pastured separately for the first couple of weeks, we put them all together and *most of the time* Coppertop and Lucky

were able to hold their own. They also learned to watch their backs! The big boys seemed to realize that the new kids were no threat to their territory. Occasionally though, one of the older llamas became possessed by his raging hormones and would pin one of the smaller ones. Because it was summer, we found a handy solution to the situation. A quick spray with the garden hose quickly cooled those amorous feelings (cold showers for llamas!).

.....one of the older llamas became possessed by his raging hormones.....

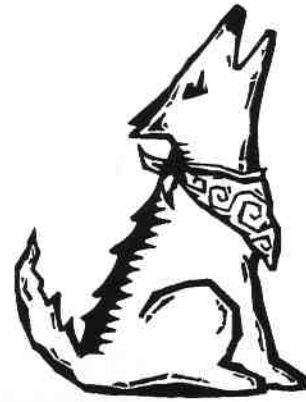
As time went on, we began to see more fighting between Silver Streak and Whiplash. There were routine instances of minor injuries involving split lips, bloodies legs, nipped hind flanks. Their play began to concern us—especially when we observed them nipping at one another's ears and then found numerous small scars. Knowing that



their fighting teeth were erupting, we were uneasy about the possibility of having those beautiful banana ears torn.

*Continued on page 20*

# GREAT WESTERN ROUNDUP



LLAMA AUCTION

SATURDAY, MAY 24, 1997

4:00pm

On Interstate 15 just north of Salt Lake City  
DAVIS COUNTY FAIRGROUNDS  
Farmington, Utah

during the

6th Annual Intermountain Llama Classic

ALSA Sanctioned Show

(Show dates 5/23, 5/24, and 5/25)

Directly west of Lagoon Amusement Park. Camping with hookups and showers available at Lagoon or without the frills at the fairgrounds. Lots of fun for the entire family! Our host motel is the Best Western Cottontree Inn in North Salt Lake about 6 miles from the fairgrounds. Call (800) 662-6686 for reservations. Mention the llama auction.

**FOR INFORMATION, CONTACT:**

Steve Kyriopoulos  
2680 West 5700 South  
Mt. Sterling, Utah 84339  
(801) 245-3529



**COME AND SEE  
UTAH'S BEST  
HOSPITALITY**

*Gelded:..... cont.*

Again, we came back to our basic purpose for owning llamas and reaffirmed that it is for hiking and packing. About the same time, Marilyn Arnold told me that one of their boys was routinely "beating up" on the other two. We both decided that for us, gelding was the best way to deal with the situation.

Never having owned livestock before, we had no idea what the process would be. Did we need to take the boys to a clinic like the cats and dogs? What special preparations should we make?

If you are planning to neuter your males and have no experience, our story may be helpful.

#### **Here's what we did and what we learned.**

In addition to waiting for the llamas to

sterile environment and went to work right in the catch pen. It is important to know how much your animal weighs in order for the right dosage of anesthesia to be given. We assisted by holding the llama steady on his back during the procedure to prevent him from rolling to the side. Did you know that llamas SNORE? Neither did we, but now we do!

As for the actual procedure, it was fairly interesting to watch. There was only one incision made per llama and the testicles were slipped out one at a time. According to our veterinarian, that makes it harder for him but much easier on the llama. Even my husband, Russ, found it rather fascinating!

This is an opportune time to trim nails and/or have the fighting teeth cut. It was our first time to trim nails ourselves, so we had a bit of time to practice without having



**Goin' for a walk:** Silver Streak, Maggie, Coppertop, Lucky and friend, Jan; husband Russ is taking the picture while holding Whiplash.

Coppertop and Lucky could be reversed,  
Maggie says no one except her and Russ can tell them apart.

reach age two, it is important to choose a time when the weather is mild simply because it is less stressful on their bodies. The evening prior to the surgery, we caught the animals in the pen and made sure that all food and water were out of reach. It was our job to provide a bed of fresh, clean straw. The vet came to our house, sedated the first llama (one procedure at a time), created a

an anxious animal on our hands while we "perfected" our technique. It also gave us a chance to check the llamas over thoroughly just for our own information.

The procedure took about 30-40 minutes, not counting "recovery" time. Silver Streak was awake, though not really alert, within 20 minutes of completion. He stood briefly, then kushed until his head cleared. Whip-



lash required a bit more sedative (he started moving around and trying to flex his legs while anesthetized) and it took him quite a while longer to wake up and even longer to become alert. Once he was conscious, he wanted to stand—and did. But he was unstable and did not look totally awake. We decided to stay near him until we were sure he wasn't going to fall into the bars of the catch pen!

After both llamas had been up and around in their pens for a couple of hours, we gave them some fresh hay and water. They were both hungry and thirsty. Our vet suggested we keep them quiet for a day, so we kept them in the pens for 24 hours. We could tell they were a little sore by the way they moved, but there was really nothing for us to do about it other than watch the incision for signs of infection (no signs appeared). Surprisingly, they did not object to being confined.

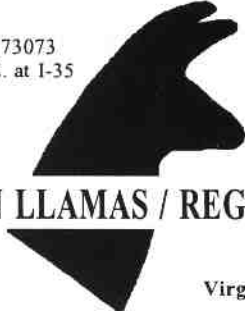
The vet said it might take up to 45 days before we would notice any changes in the llamas' behavior. We actually saw some differences within a couple of weeks—no more rough fighting, no more vying for being first to get their daily grain, and no more chasing the smaller boys except to play. After a few months Silver Streak's dominant behavior did return, but at a much more manageable level. He wants to be the leader—and is a very good one—so we try to make the most of it by letting him be the role model during training. The playfulness has continued in both animals, but without the roughness. We all, including the neighbors, are entertained watching them run about without fearing that injuries are about to occur!

Will we have the two younger llamas gelded? It's a strong possibility, although we will wait and see how they develop and what new behaviors are exhibited. If we make the decision to go ahead with the surgery, we know now what to expect! Yes, this is *just one* of those topics we never would have imagined learning about a few years ago!

Rt. 1 Box 12A  
Orlando, Okla. 73073  
State Hwy. 51 E. at I-35

1-800-654-3691  
405-455-2255

**Breeding  
Boarding  
Sales**



**MORTON LLAMAS / REGER RANCH**

Basil Morton

Virginia Reger Morton


HIGH HOPES LLAMAS



Stan Lacher  
Gail Segreto

P.O. Box 506, Elizabeth, CO 80107 • 303-646-0989

Breeding for the Finest in COLORED Alpacas




Santa Rosa Alpacas

**Jeannie Flavin  
Owner/Breeder**

Home of  
"Kidneybean"

- ◆ Full Service Breeder
- ◆ Ongoing Customer Support
- ◆ Consultations
- ◆ Pen Breeding/Boarding
- ◆ Quality Breeding Stock
- ◆ Genetic Diversity
- ◆ Well Trained Cuddly Pets
- ◆ 4-H Projects

Located 30 minutes SW of Denver  
Complimentary Bed & Breakfast Accommodations



**Member: A.O.B.A., A.L.S.A., R.M.L.A., and  
Alpaca Breeders of the Rockies**

25788 Richmond Hill Rd • Conifer, Colorado 80433  
**(303) 838-7513** Voice or fax

# LAMAS IN THE



The Akron (OH) Beacon Journal had a full page color article on llamas trekking in the Cuyahoga Valley National Recreational area. Very positive and well done, lots of photos. 12/7/96

Jack Hanna was on the Maury Proovich show and he had a nice looking llama with him. 11/22/96

Sprint commercial had runners in the Andes running through a small 'scruffy' herd of llamas. 12/31/96

The show "Fox After Breakfast" had two adorable alpacas on stage. However the information regarding alpacas was inaccurate when they stated, "They can be taught to do tricks like dogs". 12/31/96

Michigan Lama Association along with about 40 llamas and owners was in "America's Thanksgiving Parade". The llamas were in 'costume'. It started at 9:00 AM and was televised nationally. 11/27/96

Fuji Films new Christmas TV commercial features Llamas very heavily. Watch for it, it's very entertaining!! 12/9/96

The December issue of Texas Monthly has a llama pictured with other animals in an article about an attorney who somehow defends animals. 12/9/96

Parker News/Press featured pictures of alpacas (and llamas in the background) in the Parker Christmas parade. Alpacas were being shown by Sharon Loner (Mile High Alpacas) and daughters. 12/9/96

The Denver Post (covering the 91st annual National Western Stock Show) featured 13 year old Christina Bojanowski rubbing noses with Sparky, an Alpaca from Fireweed Ranch.

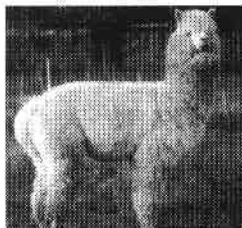
The accompanying article was wongfully titled: "Alpacas Premiere at Show". Alpacas wers first shown at the Stock Show by Phil and Chris Switzer, Switzer-Land Alpacas, quite a few years ago. Alpacas have been at every show in the last 3-4 years mainly through the effort of Bob and Barbara Hance of Hance Ranch. 1/12/97

**Alpaca Scoop:** There is a plan afoot to have an "Alpaca Show" at the 1998 National Western. WOW!

*Many of these items were taken off the llama and alpaca chat groups via the internet.*

*Hey, if your's (or somebody else's) animals make it on the television, in the newspaper, on the radio, etc. send some information about the adventure and it'll be here next issue! Mark the package "LAMAS IN THE NEWS".*

## STEWART'S ROYAL ALPACAS



CHUCK & HELEN STEWART  
Phone/Fax: (719) 275-2701

190 STEINMEIER  
CAÑON CITY, CO 81212



ALPACAS

FIBER

LLAMAS

OWNERS  
ROBERT & BARBARA HANCE  
11818 W. 52ND AVE.  
WHEAT RIDGE, CO 80033  
(303) 422-4681

MANAGER  
MARY HANCE  
11855 W. 52ND AVE.  
WHEAT RIDGE, CO 80033  
(303) 422-3568 FAX  
(303) 467-3261

# Pack Llama Performance Testing

By Jim Osmun • 9966 Logan • Thornton, CO 80229 • Phone/FAX 303 457-2787

A new activity to measure the performance of the pack llama has been designed and tested through the efforts of The Western Idaho Llama Association's Packing Committee. Expectation is that ALSA will have a certification for Pack Llamas this season. Details are available at <http://www.llama.org/alsa/pack/> or from Dick Sheehan, Clear Creek Llamas, 60 E. Clear Creek Drive, Meridian, ID 83642 (208)888-4410.

The course provides owners and potential owners a structure to evaluate pack llamas. Three, five, and eight mile courses containing normal obstacles are set up on existing trails. Basic, Advanced, and Master Performance division certifications are awarded based on points accumulated for performance.

At some meetings last year I handed out detailed information provided by Dick Sheehan. There is enough interest in Colorado to encourage me to schedule some practice trials for education and fun.

March 15/16 & 29/30, April 12/13 & 26/27 are week-ends scheduled for trials. Locations in Boulder Open Space, US Air Force Academy, and Golden Gate State Park are being considered.

For additional information contact me.

*For the past 2 years the Northern Rockies Llama Classic has been offered to the llama community and will again in September, 1997. But due to computer error (me) 2 entire lists were erased. One was for those who wanted the Classic Sales Catalog and the other was for those who wanted to receive consignment information. If you had requested to be on either list please contact us at: NRLC c/o Jonathan Blacher, 5255 Jackson Creek Rd., Bozeman, MT 59715-phone (406) 587-8077 - fax (406) 586-5687 email - jonathan@alpinet.net*

*Jonathan Blacher*

UNITED STATES DISTRICT COURT  
SOUTHERN DISTRICT OF OHIO  
WESTERN DIVISION

STANLEY ILHARDT, et al  
Plaintiffs

-vs-

A.O. SMITH CORPORATION, et al  
Defendants

Civil Action No. C-1-92-635

Judge Herman J. Weber

FILED  
RECEIVED  
96 OCT 29 AM 8:58

Decreted

## NOTICE OF CLASS DECERTIFICATION

THIS NOTICE IS ADDRESSED TO ALL PAST AND PRESENT OWNERS AND LESSEES OF HARVESTORE FEED STORAGE STRUCTURES

On March 25, 1994, the United States Court for the Southern District of Ohio certified a class action (Doc. #24) in favor of all past and present owners or lessees of Harvestore feed storage structures. The class action included claims that the Harvestore structures were defective and caused damages. YOU ARE HEREBY NOTIFIED THAT THE DISTRICT COURT HAS NOW DECERTIFIED THE HARVESTORE CLASS BY ORDER OF AUGUST 16, 1996 (Doc.#120) WHICH MEANS THAT THE CASE WILL NO LONGER PROCEED AS A CLASS ACTION.

The decertification of the class by the District Court means that you are back in the same legal position as to certified claims that you were in when the class action was filed on August 4, 1992. Therefore, if you are interested in pursuing an individual claim against the Defendants, the time left for you to make your claim may be extremely short due to statutes of limitations in your state.

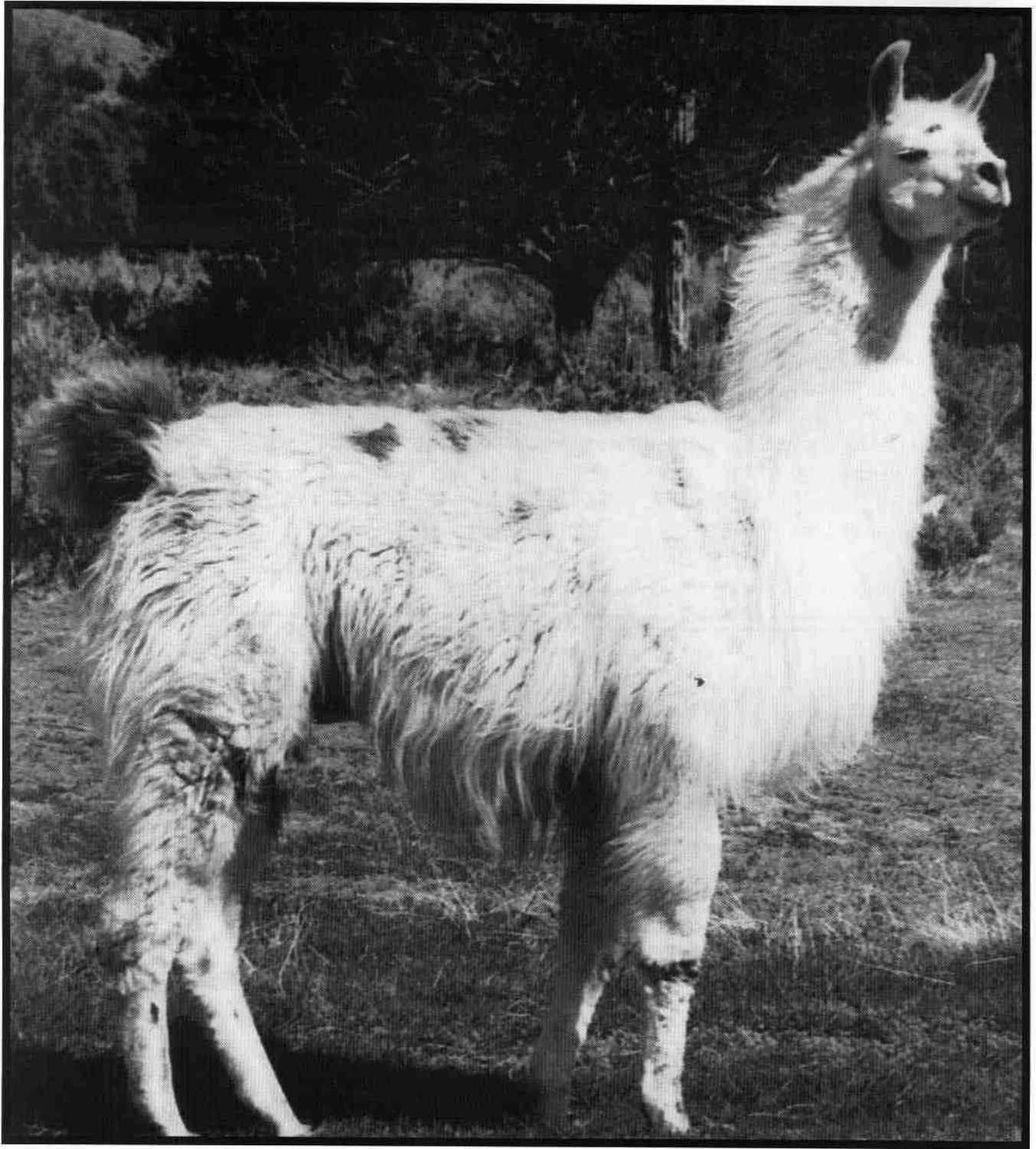
Questions should be directed either to your personal attorney or to one of the former class attorneys:

• Stanley M. Chesley, One West Fourth Street, Suite 1513, Cincinnati, OH 45202  
(toll free 1-800-422-8066)

• David Wade Peck, One West Fourth Street, Suite 1400, Cincinnati, OH 45202  
(1-513-721-1350, leave message at voice mail extension 226)

The Court's Order which decertified the class is available through the office of the Clerk of Courts, U.S. District Court for the Southern District of Ohio, Room 324, U.S. Courthouse, 100 E. Fifth Street, Cincinnati, Ohio 45202.

*Herman J. Weber*  
Herman J. Weber  
U.S. District Judge



**ALSA CHAMPION: FERN'S MICK DUNDEE**

**ALSA Performance  
Champion**

Recognition of Merit Pack  
Recognition of Merit Public Relation

Mick's offspring will be offered for sale at the Great Western Roundup Llama Auction during the Intermountain Llama Classic, Saturday, May 24th, 1997.

**Limberlost Llamas**

60 S. Limberlost Trail  
Oak City, UT 84649-0297  
801-846-2525

Owners: Daryl & Sandra Wood



# CAROUSEL FARMS



## TULL STANSELL ESTATE

Cheryl McCutcheon Owner/General Manager  
P.O. Box 57, Ruidoso Downs, N.M. 88346  
(505)378-4503



## Serenity Lane

LLAMAS & ALPACAS

Sales

Breeding

Boarding

Since 1984 719-687-1224  
Bill & Donna Brown .15293 W. Hwy. 24 Woodland Park, CO 80863



## WOOLIES

Harold & Sharon Herbold  
Lauren Herbold

15350 Hwy 83  
Colorado Springs, CO 80921

(719) 495-3092  
(800) 484-9739-WOOL (9665)

Llamas

Breeding Stock, Pets, Sheep Guards

Reg. Corriedale & Colored Sheep

Breeding Stock, Handspinning Fleeces, Market Lambs

Visitors Welcome



## Hollybrook Farm & Llama Ranch

Llamas to Breed, Pack, Pet & Guard  
Trained & Touchable  
Fleece, Roving & Yarn  
Performance Guaranteed

We specialize in gentle dispositions  
Strong bodies • Fine Fleeces  
Consultation for new owners

Visitors Welcome

Since 1983

Cliff & Pat Skelton, Stuart Skelton  
2302 Legge Rd. Mount Vernon, WA 98273  
(360) 445-5262

## UTAH LLAMA ASSOCIATION SPONSORS LLAMA PACK TRIP

By Daryl Wood • Limberlost Llamas • P.O. Box 297 • Oak City, UT • 84649-0297 • (801)846-2525

The pack trip into the Ruby Mountains in Nevada was fun. The trail was a lot steeper than the one we went on in the Wind River Mountains several years ago. The trail had a lot of switchbacks. We didn't go as far as we had planned because we were tired after we reached the pass. We went down the other side a little ways and set up camp. Russell Stubbs had prepared 10 pounds of spare ribs and other dishes were furnished by the rest of the group. I took a 12'x12' spike tent that I bought from Cabelas. Riddles also had a spike tent. Brauers had a dome tent. Some time during the early night, Rick started laughing and kept everyone awake for some time. Something really got him going. Mick was the lead llama with Flint in the middle and Dutch at the tail end. Poncho was the lead llama for Vickki and Danny Riddle. Captain was the lead llama for Rick and Sandy Brauer. They did a good job of packing all of our gear. The Brauers also brought an exchange student from Japan along with their three children. Danny and Vikkie Riddle took 3 llamas and they did a good job also. Rick and Sandy Brauer brought 3 llamas. Several llamas were in training. A couple of dogs made the trip with us. The scenery was great! When we returned to the ranch, Brauers discovered that their dog was missing so they had to go back to the trail head to get their dog. The dog was waiting for them. ..what luck. I don't know about the rest of the group, but I was sore the next day.

# We Are On The Net!

You will find the following topics on the RMLA Page.



## Conference

## Events

## Shows

## Newsletter

## Caring for Llamas and Alpacas

## Research

## Fund

## Library

## Canyonlands Ban

## RMLA Service Directory

## Breeders

## Packers

## Training

## Vitamins

## Wool

## Equipment

## Leasing

## Publications

## Stud Services

## Gifts

## Boarding

The Rocky Mountain Llama and Alpaca Association is on the Internet with eleven pages of information. The purpose of this web site is to provide information to members and non-members on upcoming conferences, RMLA events, RMLA sponsored llama shows, past articles from our newsletter, and an explanation of how and where our research dollars are being spent. Caring for Llamas and Alpacas has its own home page with an order form and a sample chapter taken from the book. The Library will soon have its own page listing all the books available to members with instructions on how to check out a book. The Llama Legal Defense Fund also has a page explaining in detail the Canyonlands ban on llamas and the progress on lifting the llama ban.

As a special bonus the entire 1996 Service Directory is on the Internet and available to anyone seeking information about RMLA members providing services regarding breeding, packers, training, vitamins, wool, graphic design, equipment, leasing, publications, stud services, gifts, boarding and volunteers. In the future if you wish to have your Service Directory listing put on the Internet it will cost an additional \$5.00 for each listing. All Internet listings will include your name, ranch name, address, phone number, E-mail address, and a brief description of the services you are offering (as described in the service directory). There will be a free link from your Service Directory Internet list to your own home page, if you have one.

*On the Internet, underlined words are linked to other pages.*

If you do not yet have a home page and would like to build your own at the RMLA web site, this too is available. Your URL (address) would be [www.llama.org/rmla/your-name/](http://www.llama.org/rmla/your-name/). To have your site created, send one typed, double-spaced page with all the information you want in your web site, along with your ranch logo to: Bob Riley, P.O. Box 1189, Lyons CO 80540. Be sure to include your E-mail address in all advertising and home pages. We will try to use heading, bold and italic type face and even colored backgrounds and text to try to make your site more personal. The charge for one page of design work and Internet space is \$30.00. If you would like to have color photographs add \$10.00 per picture. All for one year of advertising on the Internet. This fee will help cover all design work, HTML coding, and uploading and storage space for your pages on the Internet. If you have any questions regarding this service, please call Bob Riley at 303-823-5409. Checks should be made payable to Bob Riley.

**Internet Service Providers (ISP)**  
AT&T World Net - (800-967-5363) Great rates if you are an AT&T long distance user. Cost is \$19.95 per month for unlimited usage.

**Rocky Mountain Internet** - (800-900-7640) Covers most of Colorado with a reasonable beginning rate of \$15.00 for seven and a half hours. They will provide you with basic browser software (Microsoft IE) to get you started.

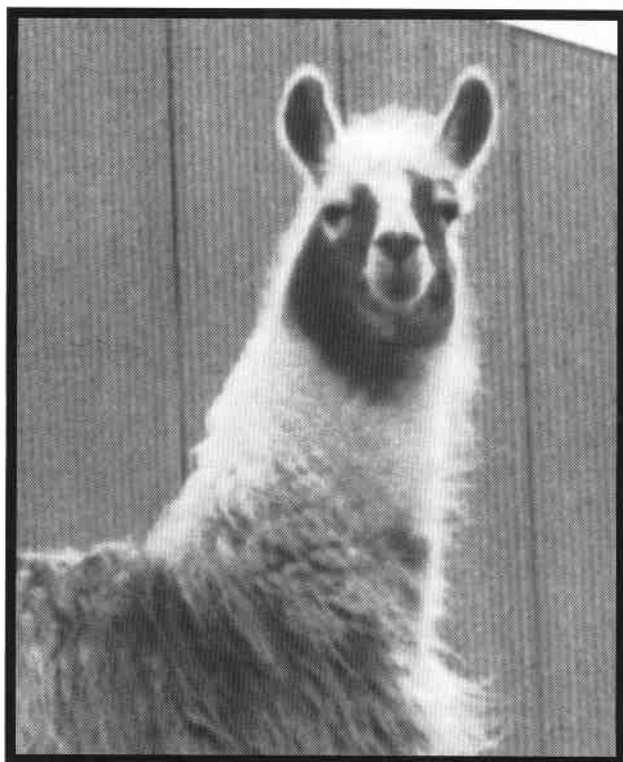
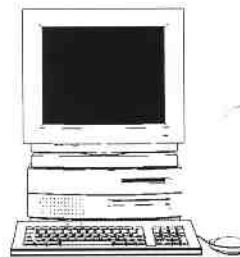
**American Online (AOL)** - Provides free browser software inserted into

many computer magazines. This is the easiest way to get started. AOL 3.0 version has many of the features once only available in Netscape, the current standard of the industry. AOL, Prodigy, and CompuServe are not the net. Think of them as shopping malls with lots of in-house services and a back door to the world wide net. Consequently they tend to be slow when you leave the mall and venture out into the net world.

There are other ISP's. The key is to find one that you can access by a local call. Look in your yellow pages or ask someone at the computer store for the name of a local provider. Soon, even the most remote RMLA member will have access to the Internet and the world of information.

### Need a Computer?

Your best bet is to buy from a reputable local computer dealer that can hold your hand when you run into trouble. If you don't have a local source, then try Gateway 2000. They are the largest manufacturer of mail order computers. They specialize in helping you over the phone and can talk you through most problems. They even have a way of dialing into your computer and fixing configuration and software problems for you. Their number is 888-888-0361.



### For Sale:

- Females; Bred and Open.
- Males; Weanlings to Adult.
- Individuals, pairs and packages can be setup.
- Mostly medium wool llamas.
- Number of different bloodlines.
- Most have been shown and placed in the ribbons.

***LLAMA LEE ACRES***

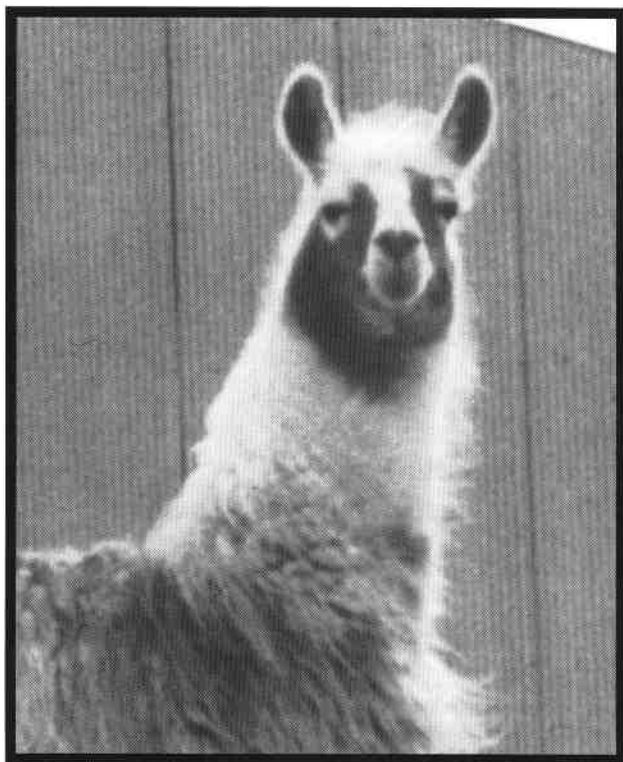
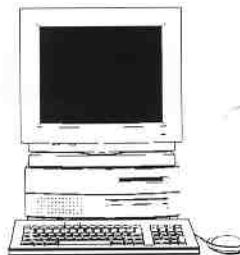
Gerald (Jerry) Lee & Merle Lee •  
Commerce City, CO • (303)659-7662

many computer magazines. This is the easiest way to get started. AOL 3.0 version has many of the features once only available in Netscape, the current standard of the industry. AOL, Prodigy, and CompuServe are not the net. Think of them as shopping malls with lots of in-house services and a back door to the world wide net. Consequently they tend to be slow when you leave the mall and venture out into the net world.

There are other ISP's. The key is to find one that you can access by a local call. Look in your yellow pages or ask someone at the computer store for the name of a local provider. Soon, even the most remote RMLA member will have access to the Internet and the world of information.

### Need a Computer?

Your best bet is to buy from a reputable local computer dealer that can hold your hand when you run into trouble. If you don't have a local source, then try Gateway 2000. They are the largest manufacturer of mail order computers. They specialize in helping you over the phone and can talk you through most problems. They even have a way of dialing into your computer and fixing configuration and software problems for you. Their number is 888-888-0361.



### For Sale:

- Females; Bred and Open.
- Males; Weanlings to Adult.
- Individuals, pairs and packages can be setup.
- Mostly medium wool llamas.
- Number of different bloodlines.
- Most have been shown and placed in the ribbons.

***LLAMA LEE ACRES***

Gerald (Jerry) Lee & Merle Lee •  
Commerce City, CO • (303)659-7662



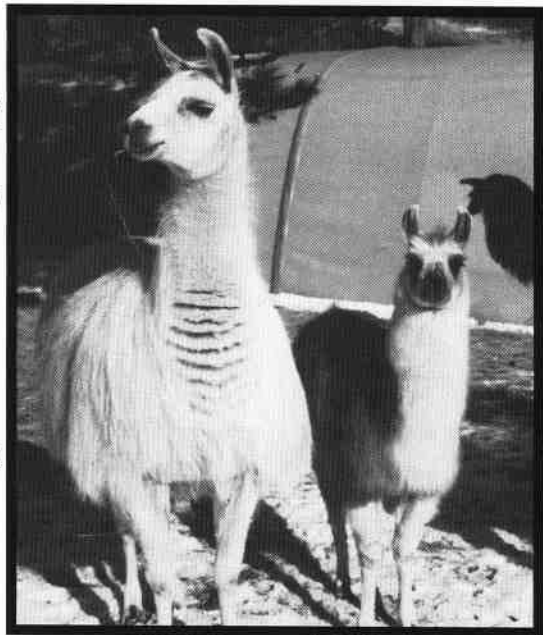
# Ketsia

By Gail Segreto • High Hopes Llamas • P.O. Box 506 • Elizabeth, CO • 80107 • (303)646-0989

You hear stories and read articles, but you never expect the unusual to happen at your place. Maybe that's why it took so long for me to recognize the uncommon gift provided by a sweet llama name Ketsia.

One of our breeding females, Sally, is a large white llama with a few light brown marks on her face. All of her babies have great color, except Ketsia, who looks just like mom. Ketsia is now 2 years old, almost as big as Sally and exceptionally sweet. And she is still a maiden.

Sally has beautiful, healthy babies every year. But often she is a little light on milk and the babies grow slowly until they get on grain and catch up. This year Sally had a gorgeous baby girl with striking colors and markings. Her name is Rifka. In the first few days, Rifka was often confused and would look under Ketsia and try to nurse. Big sister was very patient. I think she liked playing mommy. I would redirect Rifka to her real mom.



Ketsia and Rifka

Rifka and Sally were doing just great. It's always a joy to see the closeness of moms and babies. And Rifka was growing nicely, keeping up with the other kids her age. But Rifka and Ketsia also developed a close bond and sister Ketsia would often oblige and "play" mommy. I stopped interfering and didn't give it much thought until almost three months later.

I was nearby and Rifka was under Ketsia. The sucking noises were quite noticeable and it sure sounded like there was something down there. When Rifka came up for air, I saw a hint of white on her lips and thought - wow, she was sucking so hard she worked up a lather! Now I started to have second thoughts and I just had to check. As I said, Ketsia is very sweet. She let me walk right up to her and reach under. I milked a teat and came out with a milky wet hand. What a surprise! She does not have a milk sack like the other moms. I wonder when Ketsia first came into her milk. I wish I had checked sooner.

Well, now I think even more highly of Ketsia. What a special gift! What a special llama family! I'm sure glad they are part of my family!

Andrew Jackson fought duels before duels were duels, and not just the inconvenience of getting up before sunrise.

-Will Rogers

# Original Design Llama Jewelry

## Straight from the Heart

Designed and created by *Mette (Lee) Hansen Teller*



#165 - Black Onyx and Sterling Silver Necklace with Ear Rings - \$50



#163 - Lapis Lazule and Sterling Silver Necklace with Ear Rings - \$50



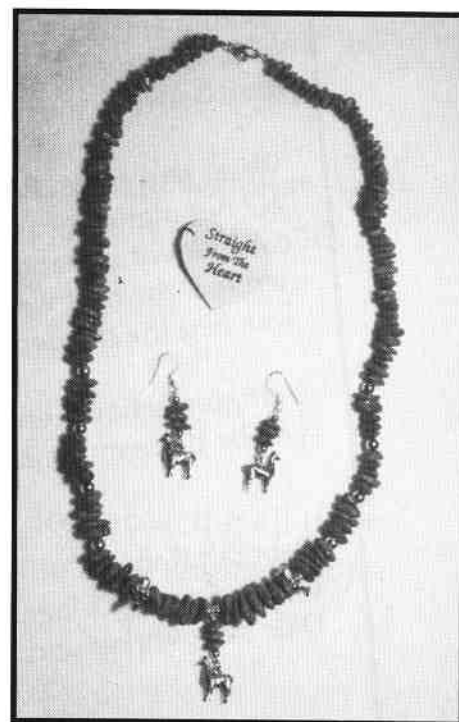
Fresh water pearls / amethyst and Sterling Silver Necklace with Ear Rings - \$50



#164 - Baltic Amber and Sterling Silver Necklace and Ear Rings - \$100



#159 - Round Turquoise and Sterling Silver Necklace with Ear Rings - \$50



#157 - Turquoise and Sterling Silver Necklace with Ear Rings - \$125

*Exquisitely designed and crafted  
"Straight From The Heart" by  
Mette Lee Hansen Teller*

FOR THESE AND OTHER CUSTOM DESIGNED LLAMA JEWELRY, CONTACT:

SERENDIPITY FARM • 9349 TAMMY LANE • PARKER, CO, 80134-7511 (303)841-4889 (800)576-1799

**INTERWEAVE PRESS**  
201 East 4th Street  
Loveland, Colorado 80537

Dear Sharon Beacham:

Thanks for your call and offers of help for the Pettigrews. I trust you'll figure out a way to spread the word to those who are most interested/concerned.

Dale and Mike Pettigrew's house burned to the ground the evening of January 12, 1997. *Dale and Mike and their llamas were not hurt.* However, the house, which they built with their own hands is gone.

Dale and Mike had gotten home from the stock show in the evening, taken care of the animals, unloaded stuff into the house, built the fire, and sat down for a cup of tea. Shortly thereafter, they noticed that the ceiling was on fire near the stovepipe. The chimney had been recently cleaned, so apparently a critical problem had developed at the connection between the metalbestos stovepipe and the roof.

Water and fire extinguishers didn't slow things down; Dale and Mike got out along with Mercy, their older cat Peaches. The other long-time cat resident hid and was not findable. By the time the fire department arrived, the roof was engulfed and the house was beyond saving. They watched the fire complete the destruction.

Pettigrew's have rented a small house just up the hill from the ranch and will be there until reconstruction is complete.

Deborah Robson  
Editor, *Spin-Off* Magazine  
Dale's co-worker and long-time friend.

Interweave Press is acting as a depository for donations to a fund to help the Pettigrews rebuild. The house was insured and the company is providing for immediate essentials. The fund is to help with the difference between the insured and replacement values of their property. Checks, made out to Dale and Mike, can be sent in care of:

Jean Campbell, Interweave Press  
201 East 4th Street,  
Loveland, Colorado 80537

Jean plans to organize a shower of some kind for them when their rebuilding plans are further along. Call her at (970)669-7672 for an update on this subject.

Deb Robson reported that all the Pettigrews' llama photos, ribbons, and records were lost. She suggested that RMLA could get the word out to people who have, purchased llamas from them. Anyone with photos of Pettigrews' llamas, Dale in costume classes, etc., could help replace some of those records.

Anyone who purchased minerals or TTEAM equipment at the National Western Stock Show should make a copy of the sales ticket and send it along with a replacement check to Dale and Mike at their home address:

168 Emerald Mountain Court  
Livermore, Colorado 80536-9402

Sally Rucker has contacted ILR and worked out a plan for replacing all their certificates plus Xerox copies of registration photos. Anyone who wants to contribute to this project can contact Sally at: (719)689-9010.

Pettigrews phone is working. Call them at their regular number: (970)493-2335. Overland Trail Llamas and Cache La Poudre Minerals are open for business!



We appreciate  
the confidence  
you've shown in our  
breeding program.

Thanks for your purchase  
of these llamas in 1996:



Raine Matcham & Troy Cobb  
Fletcher, North Carolina

- 1 PHF Clementine
- 2 *Cria: Bred to PHF Solomon's Seal*
- 3 PHF Picacho's Bonita
- 4 *Cria: Bred to Cadfael*

PHF Bramble x PHF Imogene  
Peruvian Picacho x PHF Imogene

Linda, Tom & Chris Gardner  
Parker, Colorado

- 5 PHF Elmer
- 6 PHF Cassidy

The Candy Man x PHF Velvet  
PHF Solomon's Seal x PHF Imogene

Betty & Terry! Hollman  
Turpin, Oklahoma

- 7 Smokie Cokie Roberts
- 8 *Cria: Bred to Peruvian Picacho*
- 9 PHF Brown Eyed Girl

Canute x Sparkle Plenty  
Camacho Chief x Cokie Roberts

Terry, Steve & Zach Lynch  
Longmont, Colorado

- 10 PHF Picacho's Tercel
- 11 PHF Iroc

Peruvian Picacho x SW Willow  
PHF Solomon's Seal x PHF Sadie

Monica & Ralph McLaughlin  
Catoosa, Oklahoma

- 12 PHF Nambe'

PHF Solomon's Seal x SW Shidoni

Jeanne Stanwood  
Castle Rock, Colorado

- 13 PHF Cymbeline
- 14 PHF Galahad

PHF Solomon's Seal x PHF Sophie  
LE Cimmaron x PHF Delphinium

Jane Sheppard & Jerry Uherek  
Beasley, Texas

- 15 PHF Sophie
- 16 PHF Fortune Cookie

PHF Bramble x PHF Velvet  
WR Rocky Top x PHF Tiger Lily

Cathy & Mark Wittrup  
Falcon, Colorado

- 17 PHF Impreza
- 18 *Cria: Bred to PHF Solomon's Seal*
- 19 PHF Picacho's Implet

Camacho Chief x PHF Sadie  
Peruvian Picacho x PHF Impreza

John and Sharon Beacham

2380 95th Street • Boulder, Colorado 80301-4937

800-465-2567 or 303-666-9437 (Metro Denver) • Fax 303-604-1730

# 1996 Another Great Year!



*Grand Champion*

## Giggles

- ★ 1996 Great Lakes Regional Reserve Champion
- ★ 1996 Great Lakes Regional Reserve Performance Champion
- ★ 5 Time Grand Champion Halter in 1996
- ★ 4 Time Performance Champion in 1996
- ★ 3 Time Reserve Performance Champion in 1996

*Let Giggles Make You Smile*



Giggles  
(\*Que Lindo x Wells Della) • Fee - \$750

Giggles Masquarado  
(Giggles x Lady Hope)



Congratulations Sara and Stacy on receiving the  
Ultimate Youth Achievement Award.



## Giggles Masquarado

- ★ 1996 Great Lakes Regional Reserve Champion

*Bred Females & Stylish Offspring for Sale*



**SASASTA STAR  
LLAMAS**

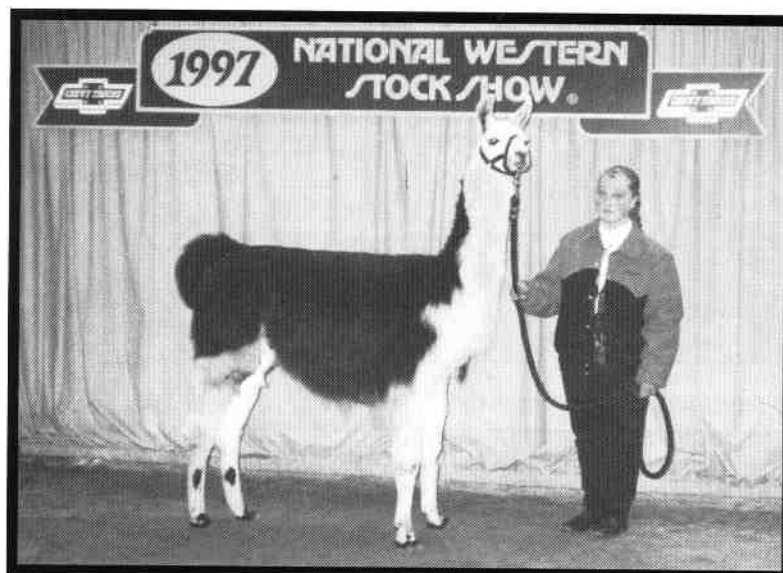
Tony & Sandy Rollins  
G-769 SR 109, RT1  
Hamler, OH 43524  
419-274-5047

# 1997 NATIONAL WESTERN LAMA SHOW RESULTS

January 11th and 12th, 1997 • Denver, Colorado

<u>Animal Name</u>	<u>Birth Date</u>	<u>Owner</u>	<u>City</u>	<u>St</u>	<u>Exhibitor</u>
<b>Ground Driving</b>					
1 Cololama's Silver Bullet	05/31/91	Bear Track Farm	Golden	CO	Ben Riggs
2 Roman Centurion	10/08/91		Golden	CO	Lloyd Wamsley
3 Kaubo	04/09/92	Bear Track Farm	Golden	CO	Gabi Von Roedern
<b>Junior Youth Obstacle</b>					
1 PPW Suzuki	06/22/94	Pikes Peak Woolies	Colo.Springs	CO	Jessie Katz
2 DEB Redrock Tyler	05/22/93	Little Dude Ranch	Eaton	CO	Aaron Price
3 CL Irazu	04/21/93	Winding Trails Llamas	Golden	CO	Ty Redenbarger
4 The Blizzard		J 'n' L Llamas	Ft. Morgan	CO	Roman Schilling
5 Barbarosa	03/30/85	Dusty Britches Ranch	Castle Rock	CO	Levi Kauffman
6 HH Winchester	05/26/96	Pikes Peak Woolies	Colo.Springs	CO	Brian Sciacca
7 The Great Mr Mutombo	04/27/94	Grand Slam Llamas	Georgetown	CO	Heather Grimm
8 Ayri's Lucky Chance	10/16/92		Eaton	CO	Chris Swain
<b>Intermediate Youth Obstacle</b>					
1 Bespeckled	09/24/91	Dusty Britches Ranch	Castle Rock	CO	Kauffman
2 P.P.W. Cosmo	08/24/94	Dancing Pines Ranch	Colo. Springs	CO	Alissa Veuthey
3 DLLC Union's Grant	10/22/94	Grand Slam Llamas	Georgetown	CO	Jessica Grimm
4 Cololama's Silver Bullet	05/31/91	Bear Track Farm	Golden	CO	Ben Riggs
5 Ayri's Matchless	11/26/92		Eaton	CO	Clint Swain
6 Cap'n Crunch	05/12/92	J 'n' L Llamas	Ft. Morgan	CO	Rory Schilling
7 Windom	08/06/95		Falcon	CO	Laura Coleman
8 PPW Domino Spirit	03/28/95	Pikes Peak Woolies	Colo. Springs	CO	Adrienne Bergenfeld
<b>Open Obstacle</b>					
1 Rocky Mountain Bounce	11/02/91	Rocky Mtn. Llamas	Longmont	CO	Bobra Goldsmith
2 DEB Redrock Tyler	05/22/93	Little Dude Ranch	Eaton	CO	Aaron Price
3 PPW Suzuki	06/22/94	Pikes Peak Woolies	Colo. Springs	CO	Harold Herbold
4 Ayri's Matchless	11/26/92		Eaton	CO	Clint Swain
5 T.T.E. Snickerdoodle	08/11/93	Dancing Pines Ranch	Colo. Springs	CO	Robert Veuthey
6 Ayri's Lucky Chance	10/16/92		Eaton	CO	Chris Swain
7 WLF Little Dude	10/18/91	Little Dude Ranch	Eaton	CO	Tiffany Price
8 CL Irazu	04/21/93	Winding Trails Llamas	Golden	CO	Jan Redenbarger

Number of Llamas in show: 220  
Number of Alpacas in show: 7



Adrienne Bergenfeld with PPW Domino Spirit

**Youth Public Relations (Ages 8-18)**

1	Cololama's Silver Bullet	05/31/91		Golden	CO	Ben Riggs
2	Ca p'n Crunch	05/12/92	J 'n' L Llamas	Ft. Morgan	CO	Rory Schilling
3	Windom	08/06/95		Falcon	CO	Laura Coleman
4	DLLC Union's Grant	10/22/94	Grand Slam Llamas	Georgetown	CO	Sue Grimm
5	CL Irazu	04/21/93	Winding Trails Llamas	Golden	CO	Jan Redenbarger
6	Spider Man	09/11/95	Llamarage	Platteville	CO	Mary Beth Hartsough
7	The Blizzard		J 'n' L Llamas	Ft. Morgan	CO	Roman Schilling
8	Ayri's Lucky Chance	10/16/92		Eaton	CO	Chris Swain



Photo by Jerry Dunn

Lougene Baird, singer/entertainer, Timothy Irwin and Jan Redenbarger havin' a great time at the Friday evening dinner.

**Open Public Relations**

1	Fern's Mick Dundee	12/04/88	Limberlost Llamas	Oak City	UT	Daryl Wood
2	Ayri's Matchless	11/26/92		Eaton	CO	Clint Swain
3	Ayri's Lucky Chance	10/16/92		Eaton	CO	Chris Swain
4	Rocky Mountain Bounce	11/02/91	Rocky Mtn. Llamas	Longmont	CO	Bobra Goldsmith
5	CL Irazu	04/21/93	Winding Trails Llamas	Golden	CO	Jan Redenbarger
6	PVLR Holiday Spirit	08/27/95	Plum Valley Llamas	Sedalia	CO	Lougene A. Baird
7	Bespeckled	09/24/91	Dusty Britches Ranch	Castle Rock	CO	David Kauffman
8	WLF Little Dude	10/18/91	Little Dude Ranch	Eaton	CO	Tiffany Price

**Open Pack Llama**

1	Rocky Mountain Bounce	11/02/91	Rocky Mtn. Llamas	Longmont	CO	Bobra Goldsmith
2	Fern's Mick Dundee	12/04/88	Limberlost Llamas	Oak City	UT	Daryl Wood
3	DEB Redrock Tyler	05/22/93	Little Dude Ranch	Eaton	CO	Aaron Price
4	WLF Little Dude	10/18/91	Little Dude Ranch	Eaton	CO	Tiffany Price
5	Bespeckled	09/24/91	Dusty Britches Ranch	Castle Rock	CO	David Kauffman
6	CL Irazu	04/21/93	Winding Trails Llamas	Golden	CO	Jan Redenbarger
7	Ayri's Matchless	11/26/92		Eaton	CO	Clint Swain
8	Ayri's Lucky Chance	10/16/92		Eaton	CO	Chris Swain

**Young Pack Llama**

1	PPW Suzuki	06/22/94	Pikes Peak Woolies	Colo. Springs	CO	Harold Herbold
2	P/M Magic Marker	03/15/95		Eaton	CO	Ryan Swain
3	Silver Sage's Monsieur	07/12/95	Silver Sage Llama's	Casper	WY	Dan Schreiner
4	HH Winchester	05/26/96	Pikes Peak Woolies	Colo. Springs	CO	Harold Herbold
5	PPW Domino Spirit	03/28/95	Pikes Peak Woolies	Colo. Springs	CO	Harold Herbold
6	The Great Mr Mutombo	04/27/94	Grand Slam Llamas	Georgetown	CO	Sue Grimm
7	P.P.W. Cosmo	08/24/94	Dancing Pines Ranch	Colo. Springs	CO	Alissa Veuthey
8	La Raya Peru's Elvis	12/06/94	Grand Slam Llamas	Georgetown	CO	Sue Grimm



1997 National Western Results, cont.

**Performance Grand Champion & Reserve Grand Champion**

1	Rocky Mountain Bounce	11/02/91	Rocky Mtn. Llamas	Longmont	CO	Bobra Goldsmith
	Sire: Rocky Mountain Taos Dam: Rocky Mountain Cherokee					
2	Fern's Mick Dundee	12/04/88	Limberlost Llamas	Oak City	UT	Daryl Wood
	Sire: Hans Royal Flush Dam: Fern					

**Junior Youth Showmanship**

1	Grand Valley Smucha	02/28/96		Westcliffe	CO	Brianna Livengood
2	Strausburg's Showtime	01/18/95	R & R Ranch	Lakewood	CO	Aubrey Eggertsen
3	HH Winchester	05/26/96	Pikes Peak Woolies	Colo. Springs	CO	Erin Sciacca
4	Holiday Spirit		Lougene A. Baird	Sedalia	CO	Deidre Baird
5	Ayri's Lucky Chance	10/16/92		Eaton	CO	Chris Swain
6	P.L. Andean Snow	05/12/95		Colo. Springs	CO	Jessie Katz
7	Gomez's Little Pearl	09/28/95	Grand Slam Llamas	Georgetown	CO	Heather Grimm
8	CL Irazu	04/21/93	Winding Trails Llamas	Golden	CO	Ty Redenbarger

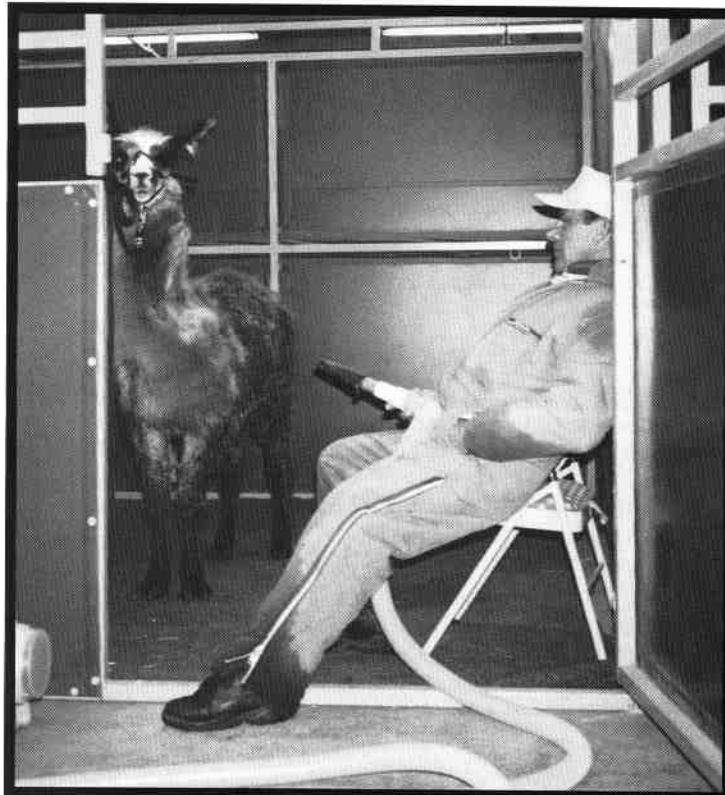


Photo by Jerry Dunn

Cliff Harding getting in some quality 'air' time.

**Intermediate Youth Showmanship**

1	Lamarage's Bandit		Llamarage	Platteville	CO	Jeff Hartsough
2	T.T.E. Snickerdoodle	08/13/93	Dancing Pines Ranch	Colo. Springs	CO	Alissa Veuthey
3	Windom	08/06/95		Falcon	CO	Laura Coleman
4	Holy Moses	08/25/95	Dusty Britches Ranch	Castle Rock	CO	Heidi Kauffman
5	Rebel	05/02/96	Mirage Llamas	Divide	CO	Leanne Houseman
6	DLLC Union's Grant	10/22/94	Grand Slam Llamas	Georgetown	CO	Jessica Grimm
7	WLF Little Dude	10/18/91	Little Dude Ranch	Eaton	CO	Tiffany Price
8	PPW Domino Spirit	03/28/95	Pikes Peak Woolies	Colo. Springs	CO	Adrienne Bergenfeld

**Two-Year-Old Non-Breeder Halter**

1	Tamarack's Rio	03/07/95	Stampede	Sedalia	CO	Kristin Baird
2	TLI Homer Simpson	10/18/94	Tamarack Llamas, Inc	Lynnport	PA	Caroline Kressly

**Adult Non-Breeder Halter**

1	Windom	08/06/95		Falcon	CO	Laura Coleman
2	CL Irazu	04/21/93	Winding Trails Llamas	Golden	CO	Ty Redenbarger

**Non-Breeder Grand Champion and Reserve Grand Champion**

1	Windom	08/06/95		Falcon	CO	Laura Coleman
	Sire: Andean Spirit Dam: Kahuru Uyu Cricket					
2	CL Irazu	04/21/93	Winding Trails Llamas	Golden	CO	Ty Redenbarger
	Sire: LW Subaru Dam: Dulce Victoria					

**Juvenile Light/Medium Wool Halter Males**

1	Shadetree's Kozmik	05/31/96	Shadetree Ranch	Fort Lupton	CO	Jack Goetzinger
2	BML Desarado	04/04/96	Burning Mountain Llamas	Rifle	CO	Len Hennig
3	Wild Cat Black Shadow	03/27/96		Bellevue	CO	Barbara Harris
4	Pisco	07/23/96		Golden	CO	Carol Lontine
5	Ranbow Valley's Salsa	04/15/96	Rainbow Valley Llamas	Placitas	NM	Mary Summers
6	T.O.C. Bryton	05/27/96	T.O.C. Llamas	Elizabeth	CO	David Heide
7	Legend's Avalanche	05/08/96		Colo. Springs	CO	Tom Tsakopoulos
8	TLI Rio's Whirlwind	04/12/96	Tamarack Llamas, Inc	Lynnport	PA	Mark Baker

**Yearling Light/Medium Wool Halter Males**

1	Huckbee	04/26/95	Itty Bitty Ranch	Golden	CO	Jonna O'Brien
2	Bozz Bo	09/08/95	Hillcrest Llama Ranch	Platteville	CO	RoseMary Zeschin
3	Triple Chocolate Treat Su	05/21/95		Colo. Springs	CO	Tom Tsakopoulos
4	BML Nueve	09/28/95	Burning Mountain Llama	Rifle	CO	Len Hennig
5	P/M Cappi	11/23/95	P/M Llamas	LaSalle	CO	Maurice Cox
6	Silver Sage's Monsieur	07/12/95	Silver Sage Llama's	Casper	WY	Dan Schreiner
7	P/M Ace of Spades	10/07/95	P/M Llamas	LaSalle	CO	Maurice F. Cox
8	The Intimidator	07/09/95	Tamarack Llamas, Inc.	Lynnport	PA	Careline Kressly

**Two-Year-Old Light/Medium Wool Halter Males**

1	Rocky Mountain Zenith	09/15/94	Rocky Mtn. Llamas	Longmont	CO	Bobra Goldsmith
2	Denargo	10/26/94		Falcon	CO	Laura Coleman
3	P.P.W. Cosmo	08/24/94	Dancing Pines Ranch	Colo. Springs	CO	Alissa Veuthey
4	GVC's Tchaikovsky	08/25/94	Lazy B Llamas	Franktown	CO	Bruce Ellis

**Adult Light/Medium Wool Halter Males**

1	Black Forest Chiloquin	08/19/93		Colo. Springs	CO	Tom Tsakopoulos
2	Logan's Run	08/10/93	J 'n' L Llamas	Ft. Morgan	CO	Joan Price
3	Bespeckled	09/24/91	Dusty Britches Ranch	Castle Rock	CO	David Kauffman
4	GGL Java	11/28/91	Winding Trails Llamas	Golden	CO	Jan Redenbarger
5	Rocky Mountain Dubloon	09/05/91	Escarpment Llamas	Colo. Springs	CO	Roger Miller
6	Fern's Mick Dundee	12/04/88	Limberlost Llamas	Oak City	UT	Daryl Wood
7	P/M John Paul Too	08/12/93	P/M Llamas	LaSalle	CO	Maurice Cox
8	Juan's Chall-N-Ger	02/12/93	Llama Lee Acres	Commerce City	CO	Gerald Lee

**Light/Medium Wool Male Grand Champion and Reserve Grand Champion**

1	Huckbee	04/26/95	Itty Bitty Ranch	Golden	CO	Jonna O'Brien
	Sire: Classic Ohiya Dam: Classic Haagen Daz Bar					
2	Black Forest Chiloquin	08/19/93		Colo. Springs	CO	Tom Tsakopoulos
	Sire: Monopoly Dam: Lady Lillian					

**Juvenile Light/Medium Wool Halter Females**

1	Wild Cat Cecelia	05/20/96		Bellevue	CO	Barbara Harris
2	Lazy B Peekaboo	03/22/96	Lazy B Llamas	Franktown	CO	Bruce Ellis
3	GGL Iris	05/28/96	Garden Gate Llamas	Nederland	CO	Warren Garythwait
4	Legend's Red Wing	05/08/96		Colo. Springs	CO	Tom Tsakopoulos
5	Decolores Belica	05/30/96	DeColores Llama Ranc	Loveland	CO	Kent Douglas
6	Angel Lakes Phoenix	05/12/96	Angle Lake Llamas	Eaton	CO	Karen Buxton
7	E.L. Samana Cay	06/14/96	Escarpment Llamas	Colo. Springs	CO	Roger Miller
8	Honey's Bunch of Clover	06/07/96	GrandValley Llamas	Grand Junction	CO	Judy Sealy

### Yearling Light/Medium Wool Halter Females

1	PVLR Stirling's Shaylyn		Plum Valley Llamas	Sedalia	CO	Lougene A. Baird
2	Treeyst	01/09/95	Pikes Peak Woolies	Colo. Springs	CO	Harold Herbold
3	TLI Outlaw's Wildflower	05/05/95	Tamarack Llamas, Inc.	Lynnport	PA	Caroline Kressly
4	Zydeco's Amazing Mousse	11/30/95	Heaven View Ranch	Divide	CO	Branda Horst
5	PVLR Holiday Spirit	08/27/95	Plum Valley Llamas	Sedalia	CO	Lougene A. Baird
6	PPW Ms Bolo	07/18/95	Pikes Peak Woolies	Colo. Springs	CO	Harold Herbold
7	Cupcake	07/10/95	Itty Bitty Ranch	Golden	CO	Jonna O'Brien
8	Biffers-Ambers	06/08/95	Llama Lee Acres	Commerce City	CO	

### Two-Year-Old Light/Medium Wool Halter Females

1	Samoa	10/20/94	Itty Bitty Ranch	Golden	CO	Jonna O'Brien
2	Duchess of Josie	09/03/94	Bledsoe Ranch	Hugo	CO	Cathy Bledsoe
3	Rocky Mountain Marimba	05/30/94	Rocky Mountain Llamas	Longmont	CO	Bobra Goldsmith
4	Rainbow Valley's Micka	08/09/94	Rainbow Valley Llamas	Placitas	NM	Mary Summers
5	Serenity Lane Jinling	07/25/94	Golden Fleece Llamas	Pine	CO	Russ Miller
6	Makah	10/11/94	Itty Bitty Ranch	Golden	CO	Jonna O'Brien
7	Timberline's Hermosa	03/31/94	Timberline Llamas, Inc.	Golden	CO	Wes Mauz

### Adult Light/Medium Wool Halter Females

1	Sugar Valley Pepper Ann	03/30/92	Itty Bitty Ranch	Golden	CO	Jonna O'Brien
2	RPL Jamboree	08/07/93	Itty Bitty Ranch	Golden	CO	Jonna O'Brien
3	Angelica	04/14/92		Golden	CO	Carol Lontine

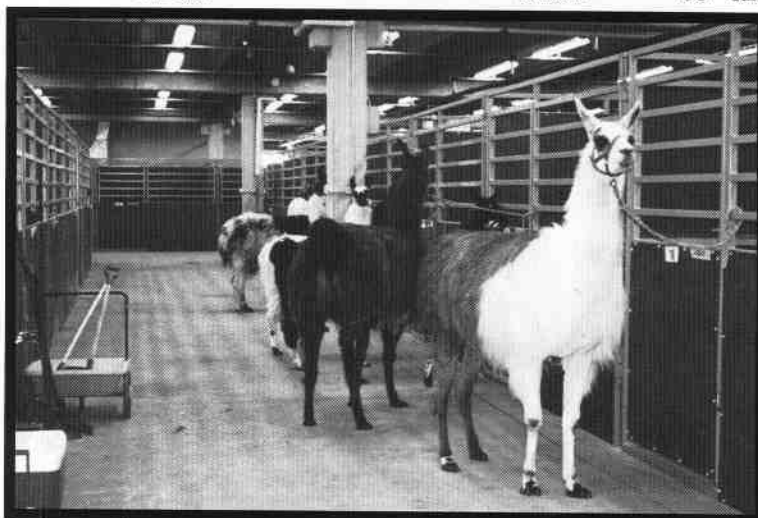


Photo by Jerry Dunn

Mauz's llamas waiting to be checked-in at the NWSS Hotel.

### Light/Medium Wool Female Grand Champion and Reserve Grand Champion

1	Sugar Valley Pepper Ann	03/30/92	Itty Bitty Ranch	Golden	CO	Jonna O'Brien
	Sire: Sugar Valley Victor Gray Dam: Sugar Valley Sugar Ann					
2	PVLR Stirling's Shaylyn		Plum Valley Llamas	Sedalia	CO	Lougene A. Baird
	Sire: Hansen's Sterling Dam: Stirling					

### Juvenile Heavy Wool Halter Males

1	TLI Gimme Back My Bullets	04/08/96	Tamarack Llamas, Inc.	Lynnport	PA	Caroline Kressly
2	Zydeco's Rebel	04/05/96	Heaven View Ranch	Divide	CO	Branda Horst
3	Timberline's Sirocco	05/08/96	Timberline Llamas, Inc.	Golden	CO	Wes Mauz
4	HLR Silver Tip	02/26/96	Harding Llama Ranch	Hotchkiss	CO	Cliff Harding
5	The Music Man	06/17/96	Llamarage	Platteville	CO	Mary Beth Hartsough
6	Conception's Obadiah		Timberline Llamas, Inc.	Golden,	CO	Wes Mauz
7	HLR Don Oko	01/18/96	Harding Llama Ranch	Hotchkiss	CO	Cliff Harding
8	DeColores Gilgamesh	07/01/96	Feathers & Friends Farm	Lubbock	TX	Kent Douglas

**Yearling Heavy Wool Halter Males**

1	Gulliver's Traveler	04/14/95	Lazy B Llamas	Franktown	CO	Bruce Ellis
2	Bardo's Legado	06/18/95	Pikes Peak Woolies	Colo. Springs.	CO	Harold Herbold
3	Bardo's Balladeer	05/23/95	T.O.C. Llamas	Elizabeth	CO	David Heide
4	Cadfael	03/13/95	Pheasant Hill Farm	Boulder	CO	John Beacham
5	Indigo Sky	05/01/95	Mirage Llamas	Divide	CO	Bob Houseman
6	Cat Balew	08/04/95	M G-ma's Llamas	Powell	WY	Norene Foulger
7	BML Widespread Panic	05/24/95	Burning Mountain Llamas	Rifle	CO	Len Hennig
8	PPW Tuffy	09/23/95	Pikes Peak Woolies	Colo. Springs	CO	Harold Herbold

**Two-Year-Old Heavy Wool Halter Males**

1	Kachemak	08/13/94	Escarpmnt Llamas	Colo. Springs.	CO	Roger Miller
2	La Raya Peru's Elvis	12/06/94	Grand Slam Llamas	Georgetown	CO	Sue Grimm

**Adult Heavy Wool Halter Males**

1	Gandy Dancer	08/10/87	Llamarage	Platteville	CO	Mary Beth Hartsough
2	Shilo Sensation	12/27/93		Bayfield	CO	Mike Bradford
3	Cum Laude	10/02/92	Hillcrest Llama Ranch	Platteville	CO	Rose Mary Zeschin
4	HBL Gulliver	06/18/91		Divide	CO	Ken Rogers
5	Silver Nitrate	08/09/93	Escarpmnt Llamas	Colo. Springs.	CO	Roger Miller
6	My Double Trouble	09/22/93	Tamarack Llamas, Inc.	Lynnport	PA	Caroline Kressly
7	Zydeco's Cricket	10/12/93	Mirage Llamas	Divide	CO	Bob Houseman
8	Zia's Golden Eagle	11/13/92	La Boca Ranch	Ignacio	CO	Roy Craig

**Heavy Wool Male Grand Champion and Reserve Grand Champion**

1	Gandy Dancer	08/10/87	Llamarage	Platteville	CO	Mary Beth Hartsough
	Sire: Oak Hill Kit Carson					
	Dam: Huari					
2	Shilo Sensation	12/27/93		Bayfield	CO	Mike Bradford
	Sire: Marshal Sam McCloud					
	Dam: Shia					

**Juvenile Heavy Wool Halter Females**

1	Angel In My Pocket	03/29/96	Mirage Llamas	Divide	CO	Bob Houseman
2	Overland Trail's Stevie Nicks	06/12/96	Overland Trail Llamas	Livermore	CO	Dale Pettigrew
3	N.R.W. Cha-Cha	03/31/96		Crawford	CO	Cheney Clouch
4	TLI Rio's Dolly Llama	06/10/96	Tamarack Llamas, Inc.	Lynnport	PA	Caroline Kressly
5	N.R.W. Nestle	06/12/96		Crawford	CO	Cheney Clouch
6	Overland Trail's Mariah Carey	03/24/96	Overland Trail Llamas	Livermore	CO	Dale Pettigrew
7	PPW Pralines And Cream	07/06/96	Pikes Peak Woolies	Colo. Springs	CO	Harold Herbold
8	Mac-De's Keitha			Fleming	CO	Sara Atkinson

**Yearling Heavy Wool Halter Females**

1	Bradford Cordia	08/31/95		Bayfield	CO	Mike Bradford
2	LW Ferngully	11/04/95	Rancho Linda Vista	Erie	CO	Carlos Mendosa
3	Zydeco's Calico Girl	10/09/95	Heaven View Ranch	Divide	CO	Branda Horst
4	BSL Ferarri	09/02/95	Feathers & Friends Farm	Lubbock	TX	Bon Burgess
5	Indian Peak's Gypsy Woman	05/18/95	Indian Peaks Llamas	Ward	CO	Alaine Byers
6	PHF Picacho's Meringue	05/26/95	Pheasant Hill Farm	Boulder	CO	John Beacham
7	Josafina	07/24/95	Harding Llama Ranch	Hotchkiss	CO	Cliff Harding
8	Gomez's Little Pearl	09/28/95	Grand Slam Llamas	Georgetown	CO	Sue Grimm

**Two-Year-Old Heavy Wool Females**

1	PPW My Girl	07/06/94	Pikes Peak Woolies	Colo. Springs.	CO	Harold Herbold
2	Allyah	06/20/94		Fleming	CO	Sara Atkinson
3	Silk Bouquet	03/06/94	Feathers & Friends Farm	Lubbock	TX	Bon Burgess

**Adult Heavy Wool Halter Females (none shown)**



### Heavy Wool Female Grand Champion and Reserve Grand Champion

1	PPW My Girl	07/06/94	Pikes Peak Woolies	Colo. Springs.	CO	Harold Herbold
	Sire: Bolivian El Nojon Dam: Morris's Truffles Page					
2	Bradford Cordia	08/31/95		Bayfield	CO	Mike Bradford
	Sire: Marshal Sam McCloud Dam: HBL Courtney					

### Produce-of-Dam

1	Marpha	08/11/91	Tamarack Llamas, Inc.	Lynnport	PA	Caroline Kressly
2	Morris's Truffles Page	02/08/91	Pikes Peak Woolies	Colo. Springs.	CO	Harold Herbold
3	R.V. Sharon's Aurora	09/30/90	Rainbow Valley Llamas	Placitas	NM	Mary Summers
4	LGP Butterscotch	10/26/91	Pikes Peak Woolies	Colo. Springs.	CO	Harold Herbold

### Get-of-Sire

1	HBL Gulliver	06/18/91		Divide	CO	Ken Rogers
2	Mt V Bo Wacket	06/05/89	Pikes Peak Woolies	Colo. Springs.	CO	Harold Herbold
3	Gandy Dancer	08/10/87		Crawford	CO	Cheney Clouch
4	Tamarack's Wildflower		Tamarack Llamas, Inc.	Lynnport	PA	Caroline Kressly
5	Okos Jordan	06/03/92	Harding Llama Ranch	Hotchkiss	CO	Cliff Harding
6	Fern's Mick Dundee	12/04/88	Limberlost Llamas	Oak City	UT	Daryl Wood
7	Zydeco	10/26/88	Mirage Llamas	Divide	CO	Bob Houseman
8	Cum Laude	10/02/92	Hillcrest Llama Ranch	Platteville	CO	Rose Mary Zeschin

### Llama Fiber

1	Peach Fizz	10/27/94		Golden	CO	-
2	The Great Mr. Mutombo	04/27/94	Grand Slam Llamas	Georgetown	CO	-
3	PPW My Girl	07/06/94	Pikes Peak Woolies	Colo. Springs.	CO	-
4	HH Winchester	05/26/94	Pikes Peak Woolies	Colo. Springs.	CO	-
5	Knight's White Star Page	05/18/95	Serendipity Farm	Parker	CO	-
6	Querencia	05/19/93	Hance Ranch	Wheat Ridge	CO	-
7	Timberline's Raku	05/02/93	Timberline Llamas, Inc.	Golden	CO	-
8	Bosworth	05/28/91	Shadetree Ranch	Ft. Lupton	CO	-



## Twin Peaks Llama Farm

Bart and Mari Anderson  
17253 Weld County Road 7  
Mead, CO 80651  
(303) 535-4041

\* Sales \* Breeding \* 4-H \* Education \* Assistance



## JACK & UNA'S POOR FARM

165 RIO BLANCO COUNTY ROAD #5  
RIFLE, CO 81650  
970-878-5215

JACK & UNA RALEY



Jan Redenbarger

303.642.0140

Winding Trails Llamas  
P.O. Box 7096  
Crescent Branch  
Golden, CO 80403

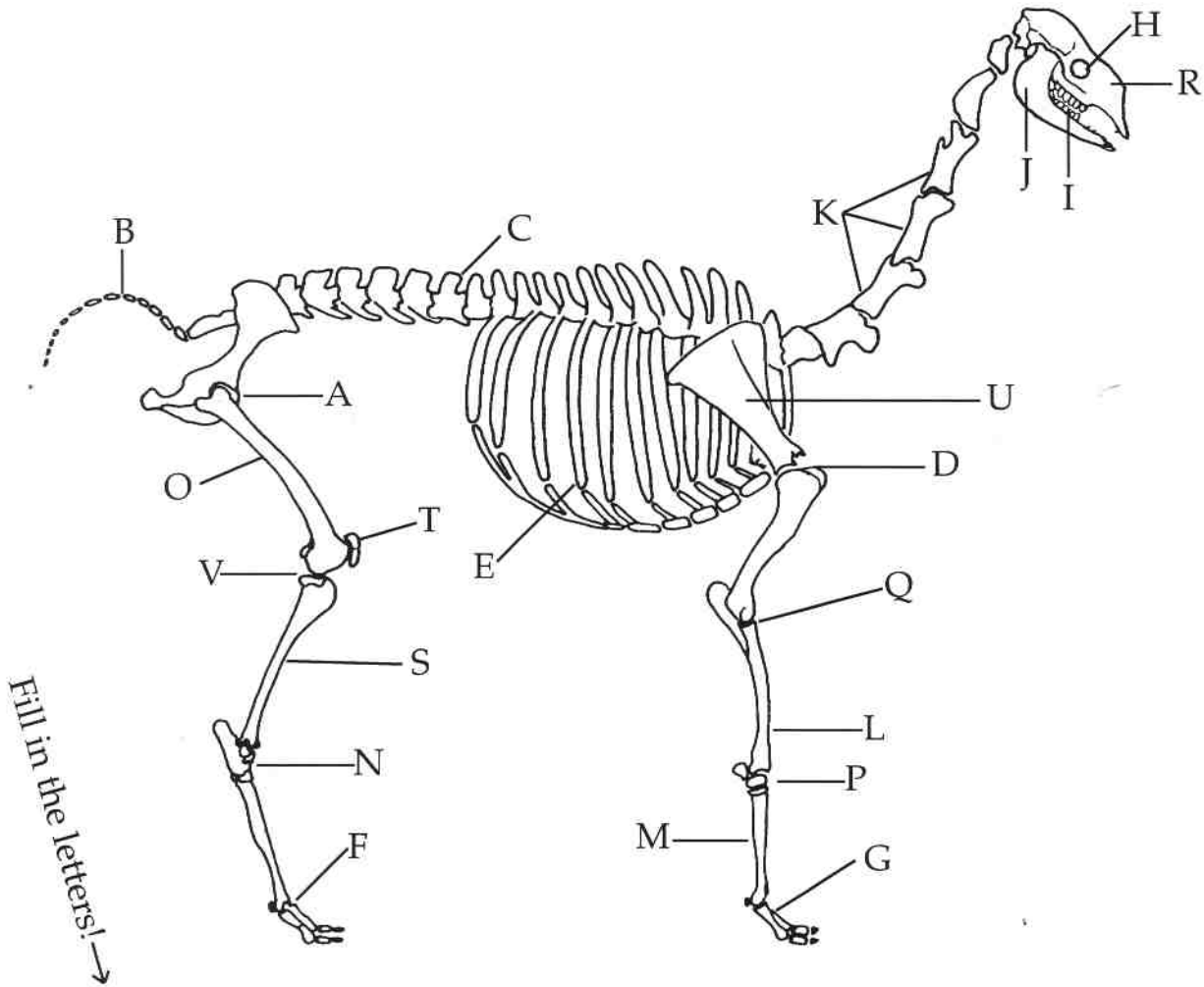


Ron & Marie Hinds  
9349 N. Tammy Lane  
Parker, CO 80134-7511  
(303) 841-4889 Voice  
(303) 841-7635 Fax  
RONLAMA@AOL.COM  
e-mail

Breeding  
Sales  
Fiber

# Just for Kids!

by Ron Hinds • Serendipity Farm • 9349 Tammy Lane • Parker, CO • 80134-7511



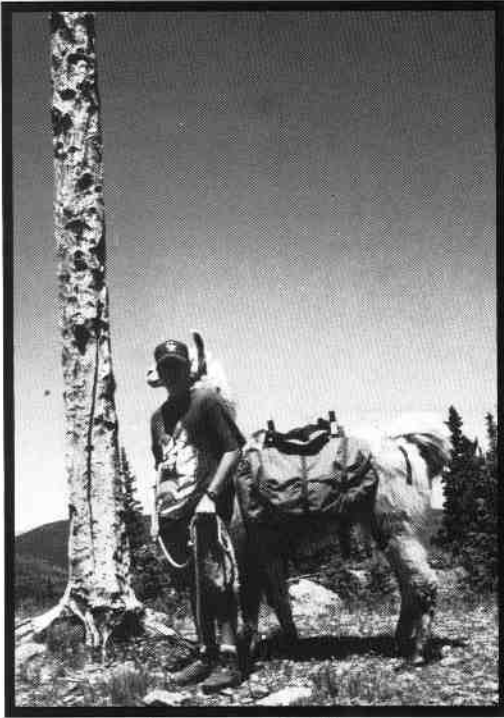
- |                                |                                  |
|--------------------------------|----------------------------------|
| _____ Ankle Joint (Fetlock)    | _____ Lower Jaw (Mandible)       |
| _____ Back                     | _____ Neck (cervical vertebrae)  |
| _____ Cannon bone (metacarpus) | _____ Pastern                    |
| _____ Elbow Joint              | _____ Ribs                       |
| _____ Eye Socket               | _____ Shoulder Blade             |
| _____ Forearm (radius)         | _____ Shoulder Joint             |
| _____ Hip Joint                | _____ Stifle Joint               |
| _____ Hock Joint               | _____ Tail (coccygeal vertebrae) |
| _____ Knee Cap                 | _____ Teeth                      |
| _____ Knee Joint               | _____ Thigh Bone (femur)         |
| _____ Leg bone (tibia)         | _____ Upper Jaw (maxilla)        |

Final quiz: Is the animal above a Llama or an Alpaca? Why?

Answers? You want the answers? OK, see page 58.

# Kids and Llamas -Working Together

By Ben Riggs



Ben and Bullet

I recently took on training a llama for a school project. As I found out training isn't easy but it is very rewarding to oneself. In this article I will tell about the way I went about training my llama.

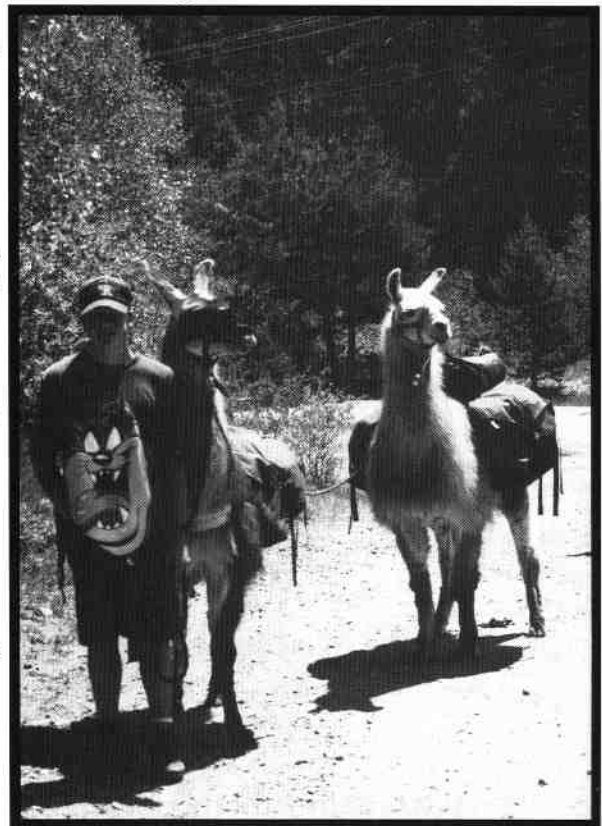
For those of you that might not know me my name is Ben Riggs and I work with Jerry Dunn. I go to an alternative school that doesn't give grades but instead has us do six Passages in areas they feel will make us a productive adult. These Passages are like big projects that mean something to you as an individual.

I have enjoyed working with llamas and hope to own my own llamas someday. I have worked with these animals for about four years. When I first started working with llamas I used one of Jerry's experienced animals named Talavi. As time went on I started helping training the babies to lead. I finally decided that it was time to try my hand at training an animal so the search started. After about six months of looking for an animal to train both on and off the farm, we found a young male llama named Silver Bullet that was living at Bobra Goldsmith's ranch and so the training began.

When I started training Bullet he was all ready halter broken and lead very nicely. He also was still up in Boulder with Bobra because we hadn't bought him yet. The first thing that I did was lead him around so that he could get used to me leading him. Then I started to put on a training pack to see how he would react. That's when Jerry bought him and he came down to Golden. After a few days of training packs on his back we put a Timberline system on him and went for a short walk.

On one of his first walks we learned that he was scared of dogs. He got loose from me and went for a run. So on the next couple of hikes we watched the dogs real carefully. As time went by I started to notice a change for the better on the trail. Bullet didn't get spooked as much and he started to realize his mistakes and would correct them. I feel that the best training comes on the trail and not at home because they realize their mistake and correct it with a little help. After a few hikes with a pack on their back they are pretty good at maneuvering around on the trail. The last real step to training is to have **Fun Fun Fun!**

I am now working on training my llama to pull a cart and that is a lot of fun.



Ben, Talavi and Bullet

# RMLA CONSOLIDATED FINANCIALS

Following is the 1996 Year End Income and Expense Report for your organization.

Two years ago, the Board of Directors instituted as a goal to more accurately track all expenditures so that a clear picture of expenses and income associated with each event or project would be of record. This has become an essential tool in managing your association. The goal of the current Board is to continue implementing sound accounting practices to benefit all members.

Last year, RMLA offered a \$500 Life Membership. These funds are set aside in a special interest bearing account. On January 2nd of each new year, 10% of the current account balance is transferred to General Operations, followed by distribution into the following areas of activity - Member and Public Education, Research and General Operations.

Revised accounting practices for Caring For Llamas were put into effect beginning in January of 1996. With the current edition of Caring For Llamas and Alpacas, the distribution of which began May 1996, all accounting and operations of CFL&A were made independent of General Operations. This allowed better tracking associated with the production and distribution of 4,000 CFL&A books. We are pleased that sales for the past seven months have been strong, with over half of the production run sold. This has allowed the CFL&A account to repay approximately \$16,000 owed to General Operation for production costs, keep current on all royalties, plus set aside \$3,000 toward the next printing. With this goal, the next printing will not be a major financial burden to the RMLA General Operations account, allowing RMLA to more appropriately use its membership funding to fulfill its mission statement to educate members and the general public regarding llamas and alpacas.

Similar practices have been initiated with the production of the 4-H Youth Manual. Efforts are underway to broaden its usage across the United States.

Should you have any questions, I encourage you to write or call!

The following financial information is respectfully submitted.

Lougene Baird, Treasurer

## Income and Expenses (1/1/96 through 1/15/97)

### General Operations

#### Income:

Membership dues split (60%)	\$ 11,131
Life Member dues	4,500
Special Events	
Fairplay '96	\$1,005
NWSS Program	530
CR Fund Raiser	350
Total Spec Ev	\$1,885
Library gifts	155
Membership committee	33
Interest	17
Misc.	10
<b>Total Income</b>	<b>\$17,731</b>

#### Expenses:

Special Events	
Fairplay '96	\$1,058
Misc. Promo	300
CR Fund Raiser	280
NWSS Program	260
Llamathon	100
Kids in Park	57
St. Pat's Parade	51
Pack Festival	22
Ft. Range	17
Kansas RV Show	13
Total Events	\$2,158
Steering Committee	1,677
Membership Committee	1,528
Board of Directors Meetings	1,775
Library	1,083
Liability Insurance	960
Telephone/Fax	541
Membership Directory	530
Postage	446
'96 Llama Assembly	272

Election Committee	195
General Office	177
Bank Fees	49
Misc. Refunds	30
<b>Total Expenses</b>	<b>\$11,421</b>

**General Operations Net Results** \$ 6,310

### Member Education

#### Income:

Conference '96	
Registration	14,488
Auction	3,695
Pre-Conference Clinics	2,370
Commercial/Ranch Displays	1,030
Notebook advertisements	944
Total Conference	\$22,527
Newsletter ads	3,598
Dues Split (15%)	2,728
<b>Total Income</b>	<b>\$28,853</b>

#### Expenses

Conference '96	
Meals	\$ 7,819
Honorarium	2,500
Travel	2,299
PreCon Clinics	1,812
Rooms	1,564
Gifts	1,170
AudioVisual/Computer	915
Printing	891
Postage	240
Refunds	234
Supplies	114
Telephone	83
Visa/MC use charges	50
Total Conference	\$ 19,691

\$19,691



RMLA Financials, cont.

Newsletter	5,135
Total Expenses	<u>\$24,826</u>

Member Education Net Results \$ 4,027

Public Education

<b>Income:</b>	
Dues split (15%)	\$ 2,728
'96 Service Directory	2,420
2nd Print/4H Youth Manual	1,398
Spec Ed. Newsletter	1,034
'97 Service Directory	90
<b>Total Income</b>	<u>\$7,670</u>

<b>Expenses:</b>	
Spec Ed. Newsletter	\$3,999
'96 Service	1,595
Estes Park Wool Market	500
Advertising	245
RMLA Display	224
2nd Print/4H Youth Manual	130
Guard Llama publication	41
RV Show	18
General office	4
<b>Total Expenses</b>	<u>\$6,756</u>
<b>Public Ed Net Profit</b>	\$914

Research

<b>Income:</b>	
Dues split	\$ 2,189
Gifts	840
<b>Total Income</b>	<u>\$ 3,029</u>
<b>Expenses:</b>	
Johnes	\$ 355
Llama Defense Fund	500
Morris Animal	5,000
General office	237
<b>Total Expenses</b>	<u>\$ 6,092</u>
<b>Research Results</b>	(\$3,063)

RMLA Wool Co-op

<b>Income:</b>	
Estes Park	\$ 1,315
Taos	824
Conference '96	296
<b>Total Income</b>	<u>\$ 2,435</u>
<b>Expenses:</b>	
EPWM Consignments	\$1,262
Taos Consignments	1,015
Startup costs	404
Operations	301
Conference '96 Consignments	259
<b>Total Expenses</b>	<u>\$3,241</u>
<b>Wool Coop Results</b>	(\$806)

Caring For Llamas (final distribution 4/96)

<b>Income:</b>	
Retail/Wholesale	\$5,475
<b>Expenses</b>	
Royalties	2,378
Telephone	1,104
Shipping/postage	242
Supplies	197
Promotion	65
<b>Total Expenses</b>	<u>\$ 3,986</u>
<b>Net Results (1/1/96 -4/30/96)</b>	\$1,489

1996 RMLA Summary of Income & Expenses

1996 Total Income	\$65,193
1996 Total Expenses	<u>56,322</u>
<b>Net Results</b>	\$ 8,871

CARING FOR LLAMAS AND ALPACAS (first printing)

<b>Income:</b>	
Sales	\$31,143
Shipping	2,445
<b>Total</b>	<u>\$33,588</u>
Cost of Goods Sold	<u>\$7,500</u>
<b>Gross Profit</b>	\$26,088
<b>Expenses</b>	
Advertising	\$ 158
CFL&A	
Credit Card	\$117
Gen Postage	108
Supplies	427
Telephone	724
<b>Total</b>	<u>1,374</u>
Royalties	5,791
Disc	1,345
Int Exp	2
Misc Exp	7
Off Supplies	77
Shipping	1,411
<b>Total Expenses</b>	<u>\$10,165</u>
<b>Net Results</b>	\$15,923

4H Youth Manual 3rd Printing

<b>Income:</b>	
Sales	2,496
Ship & Hand	7
<b>Total Income</b>	<u>\$2,503</u>
Cost of Goods Sold	<u>(429)</u>
<b>Gross Profit</b>	\$2,074
<b>Expenses</b>	
Disc	\$18
Shipping	183
Credit Card	3
Phone	27
Supplies	154
<b>Total Expenses</b>	<u>\$246</u>
<b>Net Income</b>	\$1,828

1996 Net Worth Summary

<b>Cash on Hand</b>	
General Operations	\$21,535
Caring For Llamas and Alpacas and 4-H Youth Manual	2,873
Life Member Escrow Savings	4,305
Research Savings	4,071
CFL&A Printing Account	3,000
<b>Total Cash on Hand</b>	<u>\$35,784</u>
<b>Receivable:</b>	
CFL&A 30 Day	\$ 1,544
<b>Inventories:</b>	
CFL&A	\$8,306
4H Youth	1,338
<b>Total Inventories</b>	<u>\$9,644</u>
<b>RMLA NET WORTH</b>	\$46,972

Would your group like RMLA Sponsorship? Contact Jerry Dunn, Events Coordinator - (303)277-1129

# Llamapaedia

By Greta Stamberg • Graceful Legend Llamas • P.O. Box 379 • Barnsville, MD • 20838 • 301-349-5149

The internet has quickly become a useful and entertaining information resource for anyone with access to a computer. It has already grown to include 70 to 100 million different web pages which provide endless information, advertise a multitude of businesses, and create electronic communities. Of course, llamas have also become a part of all this electronic growth. There are numerous llama farm websites and a few information/listing websites.

Current llama information/listing websites have some general information on llamas and serve the llama community by providing lists of sources and links to other llama information. These sites include general information, farm pages, lists of organizations and events and fun things for the public. The information on these sites is very general and only useful to the novice llama owner or the general public.

Llamapaedia is one of the most recent of the llama information websites and Llamapaedia is different. It was created by two veterinary students to be a source of researched, objective and practical information about llamas for both novice owners and experienced llama breeders. It is intended to be a source of information, not income. The creators of Llamapaedia will not advertise or put links to farms because other llama websites already fulfill that role. Instead, it will provide clear, detailed information on origin and history, anatomy, feeding and nutrition, facilities, reproduction, crias, the llama industry, uses of llamas, general maintenance, wool/fiber, common problems and medical advice (once the authors get their DVM's).

Llamapaedia always keeps the user in mind. The text is supplemented with diagrams, tables and color photos as well as some audio and video segments. All of these additions are compressed into an efficient format which makes them load faster. The audio and video clips are a recent addition and are very exciting because it is a new frontier for websites. Currently there are only a small percentage of websites with these features. Playing the audio and video clips will require additional software for some users, but the site will direct you to download it.

Visit the site at:

**<http://www.llamapaedia.com/>**  
and judge for yourself!

*Greta Stamberg and Derek Wilson are third-year veterinary students from Virginia-Maryland Regional College of Veterinary Medicine who decided to create Llamapaedia in May of 1996. Greta has the llama experience and Derek has the computer skills. The combination results in an attractive user-friendly website with information useful to all llama enthusiasts.*



## Rancho Linda Vista

Carlos Mendoza, M.D.

7411 Weld County Rd. #7

Erie, CO 80516

303 772-2854

Fax: 303 772-7178

# RMLA FIBER POOL

It's not too early to plan your spring shearing. Take a walk out in your pasture during the next break in the weather and access your herds' fiber. The information that follows will help you decide if your shorn fleeces could be sent to the RMLA fiber pool this summer. If so, you could count on receiving yarn this fall in time for Christmas projects or gifts.

Any llama, or alpaca, with more than 5 inches of undercoat in the barrel and rump area is a candidate for shearing. This is based on 3+ inches for spinning and 1 to 2 inches left on the animal for sunburn protection and preparation for next winter. However, if the shorn fiber length is more than 6 inches, it will need to be cut into 3 to 6 inch pieces before it can be spun.

Fiber that has been on the animal for 2 years or less could be sent to the RMLA fiber pool. Fiber that is more than 2 years old will probably be too matted, dirty, or weathered to be accepted. Shear it off and start over again. Old fiber is still usable for padding, insulation, birds' nests and garden mulch.

Please refer back to your November, 1996 RMLA Journal for pasture and fiber management guidelines for producing quality fleeces. (National Fiber Pool article, page 49)

Next, do a hands-on evaluation of the quality, condition and cleanliness of each animal's fleece. Give a grade of 1 to 5 for each of these criteria on the worksheet on the next page.

Quality refers to the feel of the fiber - how soft, fine and pleasing it is to the touch. Would a garment made from it be comfortable against your skin? Good quality fiber has a natural luster or shine. The quality should be consistent throughout the entire blanket or prime area.

Condition is a measure of fiber health. Is it strong, flexible and alive, or weak, brittle and dead from being left on the animal too long? Mats that can be pulled apart with your fingers will be removed by carding when the fiber is processed. All the fibers should be approximately the same length; none over 6 inches or less than 3.

Cleanliness is of equal importance. Vegetation, dust, and insect eggs can ruin a quality fleece.

After looking at your llama or alpaca's fiber, if you have questions or aren't sure about its acceptability, give us a call or send a sample for evaluation.

Watch for an article on shearing and sending your fleeces to the fiber pool in the May RMLA Journal.

Sharon Beacham, 303-666-9437 or Karen Kinyon 970-484-6241

*Fiber Grading Worksheet on next page.*

**February, 1997 - RMLA**

# FIBER GRADING WORKSHEET

(See accompanying article on previous page.)

## Quality of Fiber:

Score	Description
1	Very coarse, dull, rough to touch, stiff guard hairs
2	Medium coarse, too many guard hairs to remove
3	Medium, removable amount of guard hair
4	Medium to fine, small amount of guard hair easily removed. Some luster
5	Finest fiber. No guard hairs, or so fine that removal not necessary. Soft enough to be worn next to skin, lustrous

## Condition of Fiber:

Score	Description
1	Dry, brittle, completely matted, weathered tips, too long or short fiber lengths
2	Dry, matted, weathered tips, variable fiber lengths
3	Healthy fiber, few mats that can be pulled apart with fingers, minimal weathering, adequate fiber length
4	Healthy fiber, no mats or weathering, may be some coting (web-like tangling - preliminary to matting)
5	Healthy, prime condition fiber. No coting. Uniform fiber length.

## Cleanliness of Fiber:

Score	Description
1	Too dirty to work with, filled with vegetation, dust, smells bad, moldy or insect eggs of any type or amount
2	Dirty, lots of vegetation, but cleanable with lots of time
3	Moderate dust, vegetation, can be cleaned in reasonable amount of time
4	Minimal dust, vegetation and cleaning time
5	Very clean, no dust, little or no vegetation, ready to use

\_\_\_\_\_ Total of the 3 scores

12 - 15	Very fine quality fleece, acceptable for garment quality yarn from the fiber pool.
8 - 11	Average quality fleece, acceptable for craft quality yarn from the fiber pool.
7 or less	Reject. Any fleece scoring a 1 in any area would be rejected from the pool.



# Christmas Llamas

By Gabi von Roedern



Caroling Llamas!

Merry Christmas and a Happy New Year!

Have you ever gone caroling? Have you ever gone with your llamas? Well it's quite an experience, especially when you go with about 25 horses! Bear Track Farm was asked to participate in a neighborhood caroling party, so we grabbed seven of our boys, put packs on them, attached bells and ribbons and started out to meet the group.

We got there a little early, so there weren't

many people or horses there yet. After a while a lot of people started showing up, until there were about 25 horses, two burros and us with our seven llamas. When the horses first arrived, the llamas and the horses were a little timid since everyone was decked out in bells and ribbons and fancy headgear.

We started walking, singing and having a good time. After awhile we started to get separated from the horses, because horses walk faster than the llamas, but we continued with the group and had a very good time.

If you decide to go caroling with your llamas, take several. Do pack strings or drive or just take one and walk around singing carols with friends and family, because it's really a great way to spread holiday cheer.

PS: Don't go during a football game!!



Caroled Llamas - Heading home

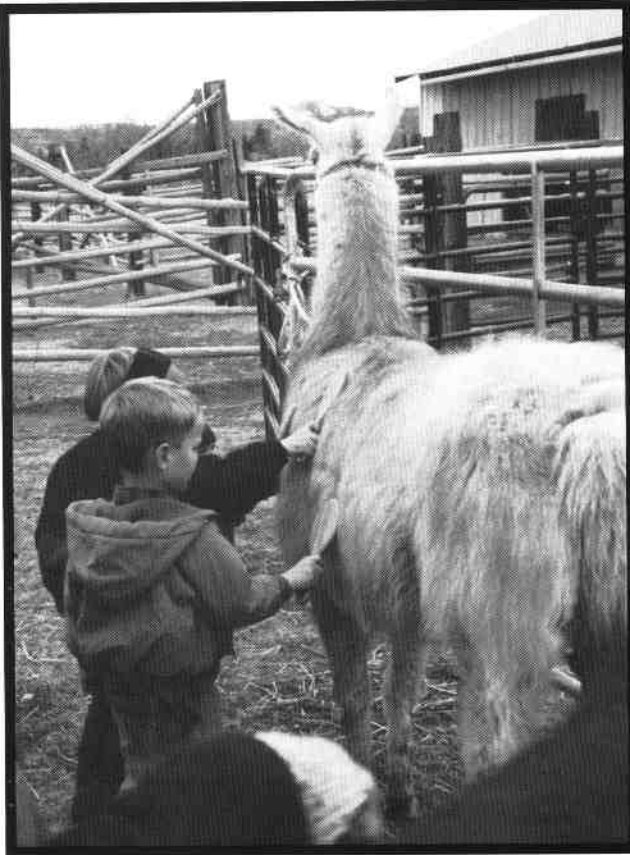
# Fun With The Pre-Schoolers

By Lloyd Wamsley

December 5th, Preschool students from JCOS came to the Bear Track Farm to see the llamas. To start with there were several llamas tied on the fence and the students pet the llamas and asked questions about the animals. This went on for about ten or fifteen minutes.

When the kids started getting a little rowdy, Ben Riggs and myself talked to the students about the llamas. I talked about where they came from and how long they live, what they are able to do. Ben showed how to use the Timberline pack and what it did for the people in the back country.

When the pre-schoolers started to get restless we ran them in a pen with the baby llamas. Then Matt Wamsley and Gabi Von Roedern read the book called "Is Your Mama A Llama?" to them. The baby llamas were not really sure that they liked the little kids and kept looking for their mamas.



Little Brushers

The last thing we did with the little ones was

to let them brush some wool from the llamas so they could try spinning and dyeing at their school. We finally took some photos of the kids all with fingers up for llama ears.



Jefferson County Open Pre-School with the Bear Track kids and llamas.

# THE 4-H CORNER

By Marie Hinds • Serendipity Farm • 9349 Tammy Lane • Parker, CO • 80134-7511 • (303)841-4889

*Editor's Note: We invite each llama 4-H Club within the RMLA universe to contribute stories about what your 4-H Club is doing. We will also be happy to publish your fair results if you report them to us.*

Llofty Llamas 4-H Club in Douglas & Elbert Counties in Colorado are starting its 4th year. We started with 8 members the first year, we had 15 members last year and I think we will have 20 members this year. We have both llamas and alpacas in our club and we have great fun. We walk in the Fair Parade as a Club and also have a lot of fun and bring oohs and aahs from the crowd. We try to go on as many hikes together as we can. The picture is from one of our hikes in late October. It was a cold, snowy day but fun any way. We invite folks who have animals but don't belong to 4-H to join us in some of our activities.

Our club sponsors a Workshop in May for any interested individuals. Ron Baird, volunteers to teach the Workshop and he does a fabulous job. This year it will be on Sunday, May 18th. It is held at the Douglas County Fairgrounds in Castle Rock and is open to only kids who wants to attend. The Workshop lasts all day with the morning being spent on Showmanship and the afternoon focusing on performance classes. Our attendees have done very well at the Estes Park Wool Market as it is a good chance to get your animals out and practice before the Wool Market Show. If any kid out there in the RMLA Universe would like to attend, just call 303-841-4889 for a registration form. The cost is \$5.00 per person. (We use this as one of our fund raisers for the year. Lunch is served for a fee of \$5.00.)



Some of the Llofty Llama (and a few Alpacas) 4-H Club after a short trek on the Cherry Creek Trail.

People, left to right: Gretchen Kauffman, Heide Kauffman, Sarah Thomas, Ron Baird, David Kauffman, Levi Kauffman, Paula Blohm, Anthony Blohm, Marie Hinds, Diedre Baird, Ron Hinds, Felicia Baird, and Lougene Baird.

Another event that our club sponsors is the Douglas County Fair Summer Classic. This is an open Youth Show held during fair week, the first full week in August. It is always hot as can be but we have a great time and try to have as many water obstacles as possible. (We also sell popsicles as a fund raiser for our club.) It will feature a Performance Grand Championship as well as Youth Pack Class this year - new ALSA classes!

We are very excited this year as the llamas are going to compete in the Round Robin for the first time. This gives our kids a chance to compete for some of the major awards at the fair. We are also trying to get a wool project going and will have kids enrolled in the breeding project. We are looking forward to another great year and busy year. We will let you know how our kids and the llamas fared in the Round Robin after the Fair. Talk to you later. Till next time, The Llofty Llamas 4-H Club.

# SERENITY LANE LLAMAS

Offers one of our finest South American sires

For Sale

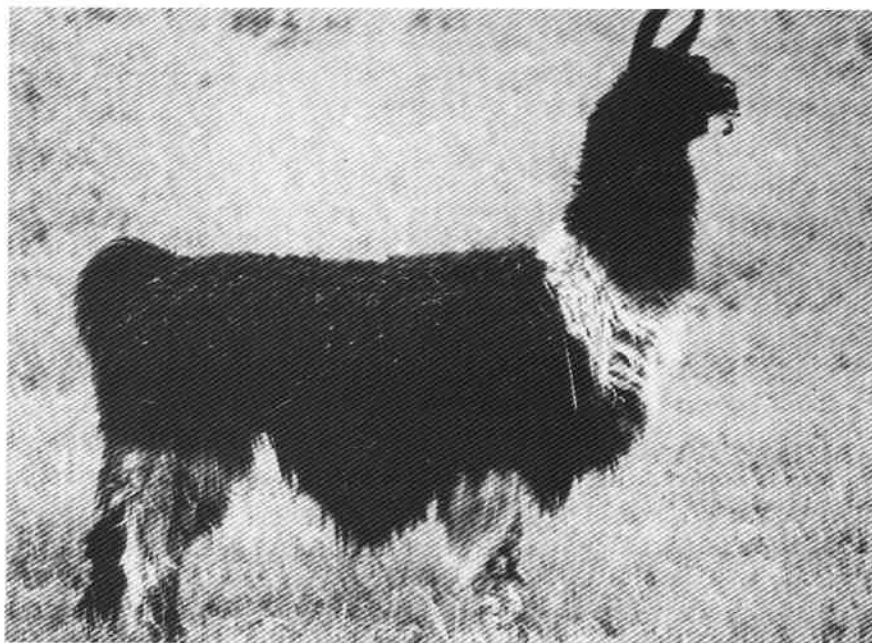
## \* MONOPOLY

Full Chilean - Proven Senior Herdsire

\*Macho Camacho x \*Constance

D.O.B. July 24, 1989

400 lbs. +



Seldom does a magnificent stud such as Monopoly become available for sale off the ranch. Born at Dick Patterson's ~ senior herdsire for Inca Roads and Serenity Lane Llamas ~ he's capable of producing the best for you as he has for others. If you want South American without compromising size ~ this is your boy. Monopoly is one of the largest, gentlest, most correct Chileans we have encountered. His offspring have been right on target in every aspect. Let this majestic male start the New Year off right for you and your program. Available for viewing along with some of his offspring at;

## SERENITY LANE LLAMAS

Bill & Donna Brown

15293 West Hwy. 24

Woodland Park, Colorado 80863 ~ 719/687-1224

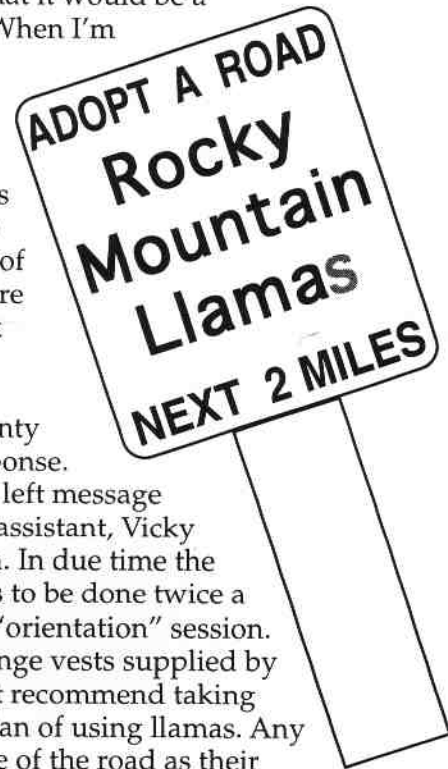


# Rocky Mountain Llamas "Adopts a Road"

By Bobra Goldsmith • Rocky Mountain Llamas • 7202 N. 45th Street • Longmont, CO • 80503 • (303)530-5575

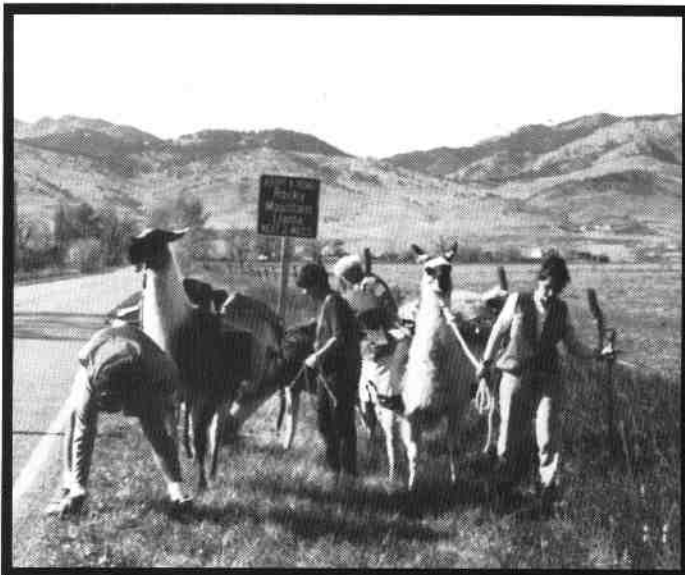
For a couple of years I had a notion in the back of my mind that it would be a good thing to participate in our local "Adopt a Road" program. When I'm driving to and fro on our county roads I always notice the signs announcing that such and such a business or family has "adopted" a section of road for clean-up. I also noticed that our farm seemed to lie near the middle of a section with no one signed up for adoption. To the west of us Joder Arabian ranch has a section leading up to Highway 36 and east of us Allegro Coffee covered a section. Whenever we walk our llamas along the sides of the road we find cans and bottles to pick up. Why not do our share and have our farm name posted on signs? We could use our pack llamas to carry the orange trash bags.

Finally, one day last summer I looked up the appropriate county office and phoned, got answering machine, left message. No response. Some weeks later—phoned again, got answering machine again, left message again. No response. Sometime later I grumbled about this to my assistant, Vicky Foster, who said, "Let me try." She did, she talked to a real person. In due time the necessary forms to be signed came in the mail. Clean-up only has to be done twice a year, and doing it more often is optional. Then Vicky went to an "orientation" session. Everyone working on the clean-up crew must wear the blaze orange vests supplied by the county, which also supplies the orange trash bags. They don't recommend taking pets along on the clean-up, but they made no objections to our plan of using llamas. Any children attending, they advised, should be kept on the same side of the road as their parents and not be crossing back and forth.



It was fall by the time all the formalities were fulfilled and the county had erected signs at either end of our section of road saying, "Adopt a Road/ Rocky Mountain Llama/ Next 2 Miles" (They left the "s" off of Llamas.) We alerted the owners of several of our boarding llamas and other friends that we had joined the program and all offered enthusiastically to participate. We scheduled our first clean-up for a Saturday in mid-October and phoned everyone. But, no go—terrible cold, snowy weather set in. We looked toward the next weekend. Same thing. Then I was gone to the Regional Championship Show in Oklahoma City over the first weekend in November. But finally, on the next Saturday, we had one of those glorious, sunny, warm, windless days that I always associate with fall in Colorado.

Photo by Bobra Goldsmith



Left to Right: Pat Weaver, Jester, Peppe(eating), Fiona Jucker, Claire Jucker, Starbuck and Brooke Monroe.

Around 10 o'clock in the morning our friends assembled and we caught up the llamas we planned to use and put their packs

on. I thought my Jester, who has been retired from showing and other serious work, would enjoy an easy outing. Pat Weaver and Brooke Monroe saddled up their Starbuck. Vicky's experienced Stretch and Cricket were on hand. And our friends Fiona and Claire Jucker, eager to join in this new venture, came in their van, bringing their two males, Peppi and Pino. Peppi was new at carrying his pack, and Pino, who is younger, came along for the walk. With whatever type of pack we used, we found it was quite easy to put the big orange trash bags in the panniers, leaving the flaps of the panniers open. Completing our crew were the Gibbons family—Michael, Cindy, Peter and Chrisy, owners of pack llamas Sterling and Peso. Two other non-llama friends, Kathy Irvine and Leslie Martien also joined us and had their first experience working with llamas.

With the llamas saddled, we all donned our blaze-orange vests and set out. Because our farm lies somewhat near the middle of our adopted section of road, we divided the group in half, one group going west and the other south and then east. The county's instructions were to work facing the traffic, so we worked our way out to the end of our respective sections on one side of the road and came back along the opposite side, the two groups meeting near the sharp turn south of our farm entrance.



Photo by Bobra Goldsmith

Brooke gives Starbuck & Jester a snack of flaked corn.  
Left to right: Starbuck, Pat Weaver, Jester, Brooke Monroe, Peppe, Clair Jucker and Fiona Jucker.

At first, in my group, we didn't seem to find much to pick up other than cigarette butts. However, after turning the corner to the East, beer cans and bottles, some of them half buried, smashed, or broken began turning up with some regularity. And further on we discovered miscellaneous scraps of metal, broken pieces of plywood, paper, cardboard, and other oddments, all of which we were able to load in the packs. Brooke soon discovered that it was useful to carry a long stick to pry up some of the half-buried items. As the amount of trash accumulated, we kept an eye on the balance of the panniers so that they would not be weighted too much to one side.

By the time we met the other half of the group, we all felt that it was a lot more pleasant to have the llamas carrying these bags than it would be to be hauling them along by hand! It was leisurely work for the llamas, with a chance to browse on the long grass that was still growing along the fences.

As we returned home along the road next to the big pasture where the female herd was grazing, a bunch of the females came running over to stare at us. But then suddenly we saw another group of females going in the opposite direction and forming a cluster around one female.—Oh! Oh! A sure sign that one of our expected babies must be on the way. All morning, as we worked our way along the road, I had been glancing periodically toward that pasture to see if there were just such an indication as this of a pending birth. When we reached our front gate, some of the clean-up crew unloaded the orange bags near it and took all the pack llamas back to the corrals. Vicky had already set the OB bag near the gate to the females' pasture. So Peter and Chrisy Gibbons hurried with Vicky and me out to where the concentration of females surrounded the expectant mother. Sure enough there were two dark, wet feet and a head with flopping ears visible. There was barely enough time for us to get out a towel to catch the baby on and dip the umbilicus in the Nolvasan solution. As soon as that was done, we watched and warded off the too curious maiden females. Within two minutes of this little male

*Adopt A Road, cont.*

baby's hitting the ground, he was standing up on his gangly legs, all by himself. In the past I had seen one up in four minutes, but this was even faster.

Very soon this strong youngster was steady enough to begin to think about nursing. With tail turned up in that "I want to nurse, please" position, he started hunting about. But with all the curious females trying to sniff him, he was not at all certain which body he should search under. So we picked him up, being sure that his mom could sniff and see him, and carried him, with mom following to the small pasture right in front of the house. This was a first time mother, so without the distractions of her pasture mates, she had an easier time getting acquainted with this new arrival.

Vicky had arranged a nice buffet lunch for everyone to be eaten on her porch, but with the fascination of a new baby, everybody took lawn chairs or sat on the grass in the maternity pasture, watching and marveling as the baby learned to nurse all by himself. It was an ideal, warm, sunny day, both for our first road clean-up and for a new baby to explore the world.

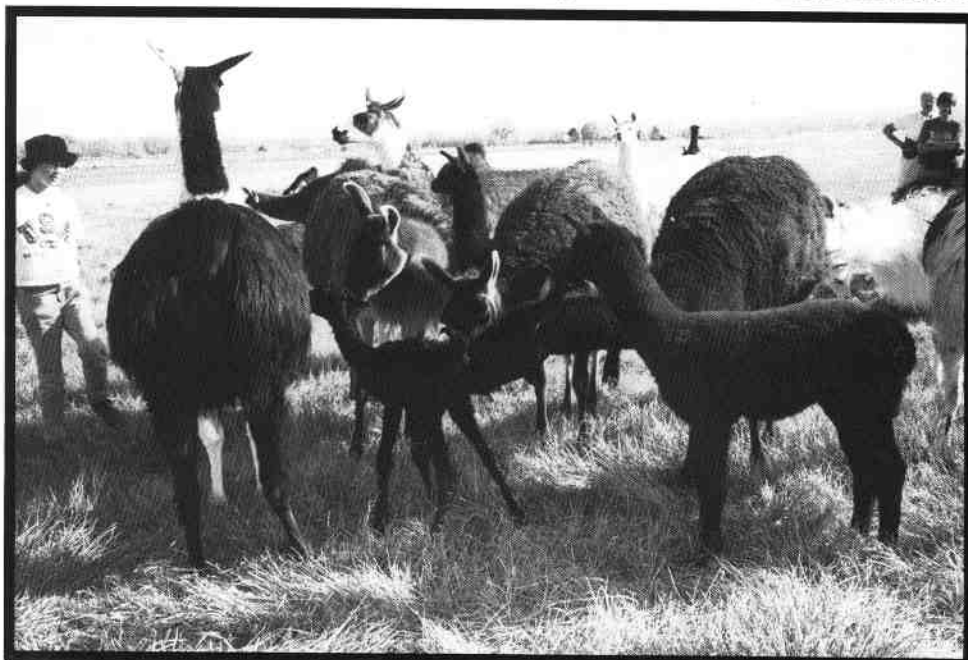
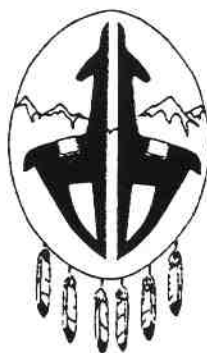


Photo by Kathy Irvine

New baby, "Hey, where do I get some milk?"



*Winter Camp Ranch*  
*Allen and Kathy Wonch*  
Box 82 • Dixon, WY 82323 • (307) 383-6610



**INDIAN PEAKS LLAMAS**  
*Since 1980*

*Herd Development*  
*Marketing Consultation*

Alaine Byers  
45640 Highway 72 • Ward, CO  
(303) 459-3245

**Remember, get your ads in early for the May Journal, promotional, issue. Copies of the Journal will be given to those who purchase Car-ing for Llamas and Alpacas throughout the year!**

**We need articles, too. You get your name and ranch name in the by-line. Send pictures, too. If you need an ad designed (free), send your information two weeks early. Deadline is April 1 for the May, promotional, issue. Nearly 4 times the distribution, same low prices. *Just do it!***



# The Llama Steering Committee (TLSC) Report to the 1997 Llama Assembly

Colorado Springs, Colorado – January 18, 1997.

(This is a summary of that report.)

The Llama industry needs to present a unified front to adequately address national and international issues. At the '94 Llama Assembly the Llama Strategic Planning Group was formed and was asked by the assembly to think about the long-term future of the llama community and to develop a written plan.

The Unified Working Group (UWG) was formed to propose a method to implement this plan.

The issue of autonomy ("...major organizations...should be combined...") was first raised in the UWG Interim Report of March, 1995.

Many llama organizations have polled their memberships regarding this proposal. The results of these surveys indicate the llama industry recognizes the need for unity but is 'comfortable' with its current structure. Because of that, the "window of merger opportunity... (has been) lowered".

The current committee wishes to present a proposal that, when implemented, has the potential to improve or resolve at least those areas of concern. It wishes the proposal to be attainable.. something that will not require further study nor the formation of another committee.

There is an effort to fund a National Trust Fund for certain projects, mainly research and government issues, affecting the llama industry. Five regional board members would be elected by a congress of llama organizations. This along with four additional appointed members from ALSA, AOBA, ILA and ILR would administer the Trust Fund. These nine individuals would be the Board of Directors. Votes would be equal to the number of members there are in each organization.

Funding of the Trust Fund would come from voluntary contributions, from individuals and organizations, in addition ALSA would commit to \$1/llama exhibited at an ALSA sanctioned show, ILR-\$1/llama, AOBA & ILA would donate equal to the ILR donation. Regional and local llama organizations would pledge \$1/farm memberships.

Committees:

Llama Medical Research Group would be appointed by the Board and to function as the current Medical Research Committee.

Llama Government Relations Task Force would screen and direct legal and governmental relation issues.

Other recommendations would include:

- A 'Town Meeting of the Llama Community', i.e. The Llama Assembly. TLSC regards this as a key component for its success with certain rules for equality of those attending.
- Changing the name of the Llama Assembly to Llama Assembly or Llama and Alpaca Assembly.
- Single "L" Llama: Improve the relationship between the Alpaca and Llama communities. This should be done by first changing their names from The YYYY Llama Association to The YYYY Llama and Alpaca Association or The YYYY Llama Association more accurately reflects the intent to serve *all* camelids in their area.
- Information Exchange, through the current Newsletter Exchange program, effected by ILA, needs to include *all* llama-oriented organizations.
- To continue Llama and Alpaca shows as developed by ALSA.
- Exchange membership lists. Such openness will hopefully stimulate information sharing, social opportunities, to initiate cooperation, and participation in local events on the part of all llama and alpaca owners.
- Major llama periodicals: It would be beneficial to all camelid owners if all publishers would consider inclusion of materials relative to all New-World Camelids.
- Fiber: Both llama and alpaca communities could benefit by more actively sharing similar opportunities.
- A Cooperative Conference: Consider a joint conference of multiple organizations.
- Information Exchange: Exchange meeting minutes of the major organizations. Appoint an active liaison to the other.
- An Internet site for Alpaca and Llama organizations.

[www.llama.org](http://www.llama.org) or [www.alpaca-llama.com](http://www.alpaca-llama.com)

For more information on this subject contact a member of The Llama Steering Committee.



## The Llama Steering Committee:

Jack Moore, Chairman Somerset, Ohio 614-743-1092 • Fred Bauer, Governance Petaluma, California 707-763-2823 • Donald Christ Bend, Oregon 503-382-7799 • Allan Dewald, Medical Rapid City, South Dakota 605-348-0559 • Dan Goodyear Robesonia, Pennsylvania 610-488-6666 • Kent Govett Kamloops, BC Canada 604-573-5581 • Linda Kyriopoulos, Govern. Mt. Sterling, Utah 801-245-3529 • Nelson Leonard, Autonomy Eagle Point, Oregon 541-826-6115 • Vern Lillies Aldergrove, BC Canada 604-857-0195 • Kathy McKinney, Finance Montesano, Washington 360-2495627 • Marilyn Milton, Autonomy Medford, Oregon 541-545-3299 • Mary Reed, Finance Chagrin Falls, Ohio 216-338-3509 • Bob Riley, Governance Lyons, Colorado 303-823-5409 • Tony Rollins, Finance Hamler, Ohio 419-274-5047 • Jodi Robinson, Finance Miami, New Mexico 505-483-5083



# Stillwater Minerals

Since 1989

Specifically Formulated for Llamas and Alpacas



## Most Accepted Supplement

Stillwater Minerals is the first widely accepted quality vitamin and mineral supplement based on llama nutritional studies by Dr. LaRue Johnson at Colorado State University.

## Many Improvements

We continue to consult with Dr. Johnson on formula adjustments. In the past 5 years, we have added special ingredients to help preserve freshness . . . resist clumping . . . plus, we added more vitamins and minerals to combat stress, aid digestion and encourage wool growth.

## It Tastes Good Too!

Most important, we even made it taste better. As Dr. Johnson said, "The best endorsement I can give is that my llamas sure eat more Stillwater Minerals Supplement than they ate of my stuff."

## The Finest Ingredients

The ingredients still include Zinpro 100<sup>®</sup> and Vitamin E, just like the original formula, plus 15 other custom ingredients. These additional ingredients add minerals and vitamins that are not found in any other Llama or Alpaca supplement.

## Those in the Know!

You will find Stillwater Minerals being used at CSU Veterinary Teaching Hospital . . . Oregon State University Veterinary Teaching Hospital . . . Dr. Jim Vicker's Select Peruvian herd . . . and, of course, Dr. LaRue Johnson's own llamas.

*A portion of each sale goes to the Llama Legal Defense Fund.*

## Four Custom Formulas in Reusable Plastic Buckets

### Original Formula Llama-Min 101

Balanced Vitamins A, D<sup>3</sup>, & E plus Calcium and Phosphorus.

25 lbs: \$36.50 50 lbs: \$64.50

### Stress Formula Llama-Min 102

Has higher levels of Selenium and vitamins plus Electrolytes. Great for summer use.

10 lbs: \$19.95 25 lbs: \$42.50  
50 lbs: \$74.50

### Premium Llama-Min 103

Has DL-Methionine, Copper, B<sup>12</sup>, and Electrolytes and B-PlexFive. For areas deficient in Copper.

10 lbs: \$20.50 25 lbs: \$45.50  
50 lbs: \$79.50

### Premium Llama-Min 104

Calcium and Phosphorus balanced for alfalfa, plus the highest levels of Vitamins D<sup>3</sup>, E, B<sup>12</sup> and B-PlexFive. Ideal for nursing moms or animals who's diets are being supplemented with grain.

10 lbs: \$20.50 25 lbs: \$45.50  
50 lbs: \$79.50

## To Place Your Order:



- Or you can send us a check after your Stillwater Minerals arrive.
- FAX or E-Mail your order: Be sure to include your name, shipping and billing addresses, phone, credit card number with expiration date to:

FAX: 800•648•2383

E-Mail: llama @ orci.com

- No Charge for shipping and handling.
- For brochure and friendly advice, call Bob, Jo or Brad Riley.

**800•255•0357**

Post Office Box 1189 • Lyons, CO 80540

<http://www.llama.org/minerals/>



## CLASSIFIED ADS



**FOR SALE:** Variety of weanlings. Call **Golden Eagle Farms** at (970)737-2411.

**AFFORDABLE QUALITY STUD SERVICE:**

Large, correct, true black Andean Spirit son with fine crimp fiber. Producing 75% female crias. Call **Golden Eagle Farms** at (970)737-2411. 2/97

**PAINT SALE:** Several young males to choose from, sweet tempered, variety of ages, (other colors also available) sired by GLL Java, starting at \$600. Also several females available, from weanlings to experienced, bred moms (bred to Java, Gandy Dancer, or 1/4 Bolivian, silky-wooled Ragin' Cajun); starting at \$2,000. Visit soon for best selection. **Llamarage**, Joe & Mary Beth Hartsough, (970)785-2463. 5/97

**ADD EXCITEMENT TO YOUR HERD** with a colorful, woolly M C Hammer daughter: Mariah Carey, black with white blaze, scarf; Stevie Nicks, bay with fine silky fleece; Crystal Gayle, white with hint of tan. Or a Hammer-bred female. Or a proven Hammer son, Dire Straits. Stud service included. Delivery available. Call. Come visit. **Overland Trail Llamas**, Livermore, CO. 970-493-2335. (2/97)

**SPINNING LLAMA AND ALPACA**

44 page book by Chris Switzer. Sections on Origin, Fiber ID, Cleaning and Collecting, Shearing, Preparation, Blending, Dyeing, Spinning, Marketing and Selling, Storage of Wool, and Projects. \$10 plus \$1.60 postage and 3% Colorado Tax. **Chris Switzer**, Box 3800, Dept. R., Estes Park, CO 80517. 2/97

**MUST REDUCE OUR LLAMA HERD:** Our loss can be your gain. All ages, types, and colors (appaloosa, paint, bay, black, tuxedos), many females available. All offers considered and animals sell with written guarantees. Come see them in person or contact us for photos. **Dolores, Colorado.** (970) 882-7126


**ALPACAS FOR SALE:** Reasonable priced quality weanling, yearling, and pregnant females - Suri & Huacayas. Bravo Bravo and Rose Gray bloodlines available. Also have bred Llama. Chuck or Helen - **Stewart's Royal Alpacas**, 190 Steinmeier, Cañon City, CO 81212 (719)275-2701.

**INDIAN PEAKS LLAMAS** has produced some of the highest quality breeding and show llamas in Colorado for over 16 years. Always offering the best. The llamas for sale have produced the high selling offspring and show winners over the last few years. Bred females starting at \$4,000 to \$6,000. Bred to/or daughters of IPR Camacho Chief (Macho Camacho). Two outstanding yearling males: a true black Suri-type Chief son, and a super wooley Wind Fall/Gandy Dancer grandson. Other yearling and experienced packers begin at \$500. Package prices available Call **Alaine Byers** at (303)459-3245. Located west of Boulder. 2/97

**MT. SOPRIS LLAMAS UNLTD:** Sopris Pack Equipment, Halters, Hay Feed Bags, Wool Apron, Quick Straps, Cria Warming Shawls. Plus: Books, Videos, Information Articles, Cards, Stillwater Minerals, Grooming, and Llama and Alpaca Care Products. Free Catalog: Females and Trained Packers for Sale. Pack Clinics 1-800-767-7479.

**GIRLS! GIRLS! GIRLS!** Very special llamas at reduced prices to good homes. These are top quality 1 & 2 year olds. All are trained for easy handling. **High Hopes Llamas** (303)646-0989 (2/97)

*Classifieds continued on next page*



**DeColores**  
**LLAMA RANCH**

*Kent Douglass & Meg Cattell, DVM*


7844 N. County Road 27      O-(970) 229-3156  
Loveland, (Masonville), CO 80538      H-(970) 593-1632

**RANCH AND FARM SUPPLIES** Complete line for new/established farms. Halters, leads, grooming, shearing, scales, chutes, wormers, vaccines, probiotics, cria care, birthing needs, signs, weathervanes, packs, carts, harnesses, show items, watering and feeding equipment, manure vacuums, spreaders, fly control, watches, clocks, vinyl fencing, and more. Best prices guaranteed. **Useful Llama Items** - Brochure-3540 76th, Caledonia, MI 49316 1-800-635-5262. usefull@cris.com (11/97)

**ADD CLASS TO YOUR HERD!** We breed big, "user-friendly", medium-wooled, classic llamas with strong bloodlines. We have a small herd, so each llama receives hands on attention. All halter, lead trained, easy to groom and handle. Weanling and adult males \$800-\$1500. **Collegiate Peaks Llamas** (719)395-8895 ~ Website: <http://www.vitnet.com/llama> 2/97

**ARCHITECT DESIGNED CUSTOM SOLAR HOME.** Two-story plus basement; 4bd/3ba, 2,942 sf home with 2 car attached garage. Two fireplaces, formal dining room, solarium with hot tub, main floor utility, pantry, cherrywood cabinets, wet bar, patio, four decks. Magnificent three level 7800+ sf barn includes 12+ stalls, vet/grooming room, workshop, 40 ton hay storage. Ideal for horses, llamas, exotics. All on 33.00 acres. \$325,000. Two adjoining 11.16 and 20.41 parcels also available at additional cost. Call Irene at RE/MAX Performance, Inc., 1-800-677-1109 or (719)687-1109. 2/97

**TRUE FRIENDS LLAMAS**



Terryl & Betty Hollman  
RR 2, Box 33  
Turpin, OK 73950  
(405) 259-6233

**MARCH IN THE ST. PATRICK'S DAY PARADE**

Tie a Shamrock 'round your favorite llama or alpaca's neck, put on a happy smile and march in the Worlds 2nd largest St. Pat's Day Parade in Denver, Colorado! Call Kristin for more information. (303)688-5445 and do plan to bring along a friend. *May the wind be at your back!*

**A BIG Thanks...**

.....goes out to Jerry Dunn of Bear Track Farm, Golden, CO, for an outstanding job of Superintendent of the 1997 National Western Lama Show.

.....to the David Kauffman family for their generous donation to the RMLA Library. Thanks, David, Willow, Gretchen, Heidi and Levi. - Dusty Britches Ranch, Castle Rock, CO.

**Answers to "Just for Kids", page 39**

- A. Hip Joint
- B. Tail (coccygeal vertebrae)
- C. Back
- D. Shoulder Joint
- E. Ribs
- F. Ankle Joint (Fetlock)
- G. Pastern
- H. Eye Socket
- I. Teeth
- J. Lower Jaw (Mandible)
- K. Neck (cervical vertebrae)
- L. Forearm (radius)
- M. Cannon bone (metacarpus)
- N. Hock Joint
- O. Thigh Bone (femur)
- P. Knee Joint
- Q. Elbow Joint
- R. Upper Jaw (maxilla)
- S. Leg bone (tibia)
- T. Knee Cap
- U. Shoulder Blade
- V. Stifle Joint

Final quiz: It's a llama. Why: The position of the tail & straightness of back and others.



# New Members

By Judy Sealy(RMLA Membership) • Grand Valley Llamas • 593 19 3/4 Road • Grand Junction, CO 81503 • (970)241-7921

Brett M. Agenbroad  
FALL RIVER LLAMAS  
P.O. Box 1640  
Flagstaff, AZ 86002-1640  
(520)283-6665

Kevin & Catherine Anderson  
CACTUS RANCH LLAMAS  
6869 Tate Rd.  
Cheyenne, WY 82110-9251  
(307)634-9502

Cameron Baker  
STAMPEDE!® CRITTER FIT-  
TERS  
Box 8  
Lynnport, PA 18066  
(610)298-8701  
JUNIOR MEMBER

Mark Baker  
STAMPEDE!® CRITTER FIT-  
TERS  
Box 8  
Lynnport, PA 18066  
(610)298-8701  
(800)313-0471  
FAX (610)298-3412  
OFFICE: (610)298-3168  
LIFE MEMBER

Adrienne Bergenfeld  
724 Saddle Mountain Rd.  
Colorado Springs, CO 80919  
(719)522-0347  
JUNIOR MEMBER

Debi Dodge  
702 Sedge Way  
Lafayette, CO 80026  
(303)661-9663  
FAX (303)666-0956

Sue Dorman  
BS ACRES  
7496 Holden Rd.  
Stevensville, MI 49127-9706  
(616)422-1469

Ronnie Egnot  
RESAISSANCE LLAMAS  
10957 Converse Road  
Plain City, OH 43064  
(614)873-8703  
JUNIOR MEMBER

Vicky L. Foster  
P.O. Box 83  
Allenspark, CO 80510

Douglas Harding  
11021 N.Cty.Rd.15  
Fort Collins, CO 80524  
(970)568-3617

Meredith A. Harris  
795 S. Colorado  
Englewood, CO 80110  
(303)783-9712

Terryl & Betty Hollman  
TRUE FRIENDS LLAMAS  
Rt. 2 Box 33  
Turpin, OK 73950-9523  
(405)259-6233

Fiona Jucker  
6137 Gale Dr.  
Boulder, CO 80303

Wayne M. Klatt  
WD FARMS  
205 Hightower Rd.  
Wheatland, WY 82201  
(307)322-4800

Don & Karen Lange  
ABC RANCH/ALPACAS OF  
BERTHOUD COLORADO  
316 Bothun Rd.  
Berthoud, CO 80513  
(970)532-9852

Gayle Laurin  
THE RANCH WORKS  
13022 West 75th Place  
Arvada, CO 80005  
Phone/FAX (303)940-7418  
E-Mail: ranchwks@henge.com

Jane Levene  
JEFFERSON FARMS  
8950 W. Jefferson Ave.  
Denver, CO 80235-1702  
(303)988-3080

Wayne Lindimore  
1000 Buttercup Rd.  
Elizabeth, CO 80107  
(303)646-3693

Carol Lontine  
760 Braun St.  
Golden, CO 80401

Carlos Mendoza  
RANCHO LINDA VISTA  
7411 WCR#7  
Erie, CO 80516

*Continued on next page*

## Lander Llama

c o m p a n y



WILDERNESS · PACK · TRIPS

Scott Woodruff

2024 Mortimore Lane  
Lander, Wyoming 82520

swoodruff@wyoming.com  
www.wyoming.com/~LLC  
Phone/Fax (307) 332-5624

# Welcome to RMLA



*New Members, cont.*

Sarah Moody  
Rt. 11 Box 0-3  
Santa Fe, NM 87501

Patty Opperman  
12185 West 13th Ave.  
Golden, CO 80401-4303

David Ruska  
5523 Ute Lane  
Greeley, CO 80634-9301  
(970)330-2059

Vincent J. Strickler  
CLOTHES-PIN "S" RANCH  
P.O. Box 194  
Scott City, KS 67871-0194  
(316)872-3403  
Colleen Turner  
WINDCIRCLE LLAMAS  
7790 Windcircle Rise  
Flagstaff, AZ 86004-1467  
(520)527-1537

Noreen Vaughan  
ARIZONA ALPACAS  
9235 N. Coyote Springs Rd.  
Prescott Valley, AZ 86314-4138  
(520)775-3380

Scott & Therese Woodruff  
LANDER LLAMA COMPANY  
2024 Mortimore Lane  
Lander, WY 82520  
Phone/Fax (307)332-5624  
E-mail:  
swoodruf@wyoming.com  
Home Page:  
www.wyoming.com/~LLC

Mike Zagrzebski  
839 Rapid Creek Road  
Palisade, CO 81526

ADDRESS CHANGES:

Ray J. Karnasiewicz  
PEACEFUL PINES LLAMA  
FARM  
86 Upper Hampden Road  
Monson, MA 01057  
(413)267-3953

Dixie Minear  
850 Garnett Ave.  
Delta, CO 81416  
(970)874-9752

Shirley Weathers  
ROSEBUD LLAMAS UTAH  
HC 63 Box 80C  
Duchesne, UT 84021  
Phone/FAX (801)548-2630  
E-Mail: wrw@uwin.com

Richard J. & Jeanne H. Williams  
LOTH LORIEN  
6120 West 3500 South  
West Valley City, UT 84128-2511  
(801)957-1471

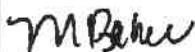
Judy Sealy  
Membership Chair  
593 19 3/4 Road  
Grand Junction, CO 81503

Dear Judy:

Throughout the llama world Rocky Mountain Llama and Alpaca Association is a leader. Your publications, especially the 4H Youth Manual is one of the best publications around for sharing with others information about llamas. It is not only good for 4H kids, but for all people interested in llamas.

Thanks to RMLA for all this organization has contributed, and continues to contribute, to the llama world.

I would like to support your work by becoming a life member. Please find \$500 enclosed. My son, Cameron, is also becoming a Junior member, \$10 enclosed.



Mark Baker  
Stampede!®

# List of Advertisers

Broken "B" Llamas .....	10	Morton Llamas/Reger Ranch .....	21
Buckhorn Llama Co, Inc. ....	10	Northern Colorado Llamas .....	13
Cache La Poudre Minerals .....	12	Pikes Peak Woolies .....	25
Collegiate Peaks Llamas .....	14	Pheasant Hill Farm .....	32
Carousel Farms .....	25	Plum Valley Llamas .....	8
Cottonwood Farm Alpacas .....	13	Prima Llama Ranch .....	7
DeColores Llama Ranch .....	57	Santa Rosa Alpacas .....	7, 21
Feathers & Friends Farms .....	9	Sasasta Star Llamas .....	33
Grand Valley Llamas .....	5	Serendipity Farm .....	40
Great Western Roundup .....	19	Serenity Lane .....	2, 25, 51
Hance Ranch .....	22	Shepherd's Choice Llamas .....	9
High Hopes Llamas .....	11, 21	Stewart's Royal Alpacas .....	22
Hollybrook Farm & Llama Ranch .....	25	Stillwater Minerals .....	56
Indian Peaks Llamas .....	54	Straight From The Heart .....	29
Itty Bitty Ranch .....	14	Susan Ley Photography .....	13
Jack and Una's Poor Farm .....	40	Trout Creek Llamas .....	63
Lander Llama Company .....	59	True Friends Llamas .....	58
Limberlost Llamas .....	24	TTEAM Training, Dale Pettigrew .....	13
Llama Lee Acres .....	27	Twin Peaks Llama Farm .....	40
Llamarage .....	64	Winding Trails Llamas .....	40
Morgan, Michael H. ....	8	Winter Camp Ranch .....	54

**Tell them you saw their ad in the RMLA Journal!**

## Rocky Mountain Llama and Alpaca Association Membership form

### Membership Types

Date: \_\_\_\_\_

- Individual adult \$30.00/year (1 vote, Journal, directory entry)
- Farm/Ranch \$50.00/year. (Couple or 2 individuals with 1 business, 2 votes, Journal, directory entry)
- Junior \$10.00/year (18 or under, must have adult member sponsor, Journal subscription and 75% reduced conf./show fees as encouragement to participate.)
- Life Membership - \$500

Name 1 \_\_\_\_\_ Farm/Ranch \_\_\_\_\_ Age (if Junior) \_\_\_\_\_  
 Name 2 \_\_\_\_\_ Phone \_\_\_\_\_ Fax \_\_\_\_\_  
 Address \_\_\_\_\_ City \_\_\_\_\_ State \_\_\_\_\_ Zip+4 \_\_\_\_\_  
Specify Sponsor if Junior membership

Please include, Zip+4  
reduces postage costs

Number of Llamas owned: Females \_\_\_\_\_ Intact Males \_\_\_\_\_ Geldings \_\_\_\_\_  
 Number of Alpacas owned: \_\_\_\_\_

Fill out form and mail with your check to:

Judy Sealy, RMLA Secretary  
 593 19-3/4 Road  
 Grand Junction CO, 81503

### Expertise /Interest

- |  |  |   |
|--|--|---|
| <input type="checkbox"/> Breeding (BR) | <input type="checkbox"/> Training (TR)       | <input type="checkbox"/> Driving (DR)   |
| <input type="checkbox"/> Sales (SL)    | <input type="checkbox"/> Products (PR)       | <input type="checkbox"/> Boarding (BO)  |
| <input type="checkbox"/> Fiber (WL)    | <input type="checkbox"/> Research (RE)       | <input type="checkbox"/> Judging (JG)   |
| <input type="checkbox"/> Packing (PK)  | <input type="checkbox"/> Leasing (LE)        | <input type="checkbox"/> Brokering (BK) |
| <input type="checkbox"/> Commercial    | <input type="checkbox"/> Other Specify _____ |   |
| Packing (COM'L PK) _____               |  |   |

### Committee Interest

- |  |   |                                      |
|--|---|--------------------------------------|
| <input type="checkbox"/> Finance             | <input type="checkbox"/> Marketing          | <input type="checkbox"/> Fiber       |
| <input type="checkbox"/> Continuing Ed.      | <input type="checkbox"/> Nominations/Elect. | <input type="checkbox"/> Membership  |
| <input type="checkbox"/> Packing             | <input type="checkbox"/> Research           | <input type="checkbox"/> Performance |
| <input type="checkbox"/> 4 - H               | <input type="checkbox"/> By-Laws            | <input type="checkbox"/> Library     |
| <input type="checkbox"/> Other Specify _____ |   |                                      |

Volunteering in RMLA is very rewarding, you meet some great people and you get to do some hummin' along the way.

# Journal of the Rocky Mountain Llama and Alpaca Association Advertising Kit

Last Revised: **Jan. 1997**

- All pictures can be color or black and white, although color is preferred.
- All layout and design for Journal ads is provided at no charge.
- This publication is black and white. Line screen is 115 lines/in.
- A 10% discount is available on three consecutive ads, except business card ads. Ads must remain the same for three consecutive issues to qualify for the 10% discount.
- Each spring a promotional issue is printed. The center layout and outside cover is printed with an outline color. An additional 1,000± are printed for distribution to the public throughout the year.
- 1997 advertising deadlines are: Feb. issue-Jan. 1; May issue-April 1; Aug. issue-July 1; Nov. issue-Oct. 1. Mail ads to: RMLA Journal • 9349 Tammy Lane • Parker, CO • 80134-7511.
- Payment should accompany ads, checks should be payable to RMLA.

## Classified Ads

RMLA Member - 50 words	\$5.00
RMLA non-Member - 50 words	\$10.00
For more than 50 words - 15¢ per word	

## Display Ad Sizes

The diagram illustrates the following ad sizes:

- Business Card:** 3 1/2" x 2"
- 1/4 Page:** 4 3/4" x 3 1/2"
- Half Page Horizontal:** 4 3/4" x 7"
- 1/3 Page Horizontal:** 3 1/8" x 7"
- 2/3 Page Horizontal:** 6 3/8" x 7"
- Back Cover:** 8" x 7"
- 2/3 Vertical:** 4 5/8" x 9 1/2"
- 1/3 Vertical:** 2 3/8" x 9 1/2"
- Half Page Vertical:** 4 3/4" x 9 1/2"
- Full Page:** 9 1/2" x 7"

## Advertising Rates

Ad Size	1 or 2 issues	3 or more issues*
Business Card	\$10	\$10
1/4 Page	\$20	\$18
1/3 Page	\$30	\$27
1/2 Page	\$40	\$36
2/3 Page	\$55	\$49.50
Back Cover	\$50	\$45
Full Page	\$65	\$58.50

\*Multiply amount by number of issues

# Trout Creek Llamas

BOLIVIAN, CHILEAN, CANADIAN  
AND DOMESTIC BLOODLINES

YOUR TYPE OF ANIMAL –  
FROM PET TO SHOW QUALITY

GUARD ANIMALS

MANAGEABLE AND GENTLE  
DISPOSITIONS

CORRECT CONFORMATIONS  
VISITORS ALWAYS WELCOME!



*AM I CUTE OR WHAT?*

BOARDING  
IN THE  
COOL ROCKIES

COMFORTABLE  
ACCOMODATIONS  
FOR YOUR  
MALES AND FEMALES



Rick & Jan Cummer (303) 647-2429  
P.O. Box 6848 • Woodland Park • CO 80866



# Llamarage



## GANDY DANCER

Grand Champion  
Heavy Wool Male

1989 & 1997 National  
Western Stock Shows

Now that's longevity!

Rarely do you find a herd sire that can repeat as champion eight years later. More importantly, Gandy is *still producing* champion offspring. If you'd like to add something to your herd that will really last, call us about our Gandy offspring for sale or inquire about a breeding to Gandy. As always, our stock is guaranteed and breedings are live birth guaranteed.

50% discount for champion females.

Joe and Mary Beth Hartsough P.O. Box 574 Platteville, Co. 80651 970-785-2463

Non Profit  
Organization  
U.S. Postage  
**PAID**  
Kansas City, MO  
Permit No. 6035

Patty Opperman  
12185 West 13th Ave.  
Golden CO 80401-4303

Address Correction Requested

Dated Material

Do Not Delay in Delivery, Please!