

# Journal OF THE **RMLA**

August  
1997



**ROCKY MOUNTAIN LLAMA AND ALPACA ASSOCIATION**

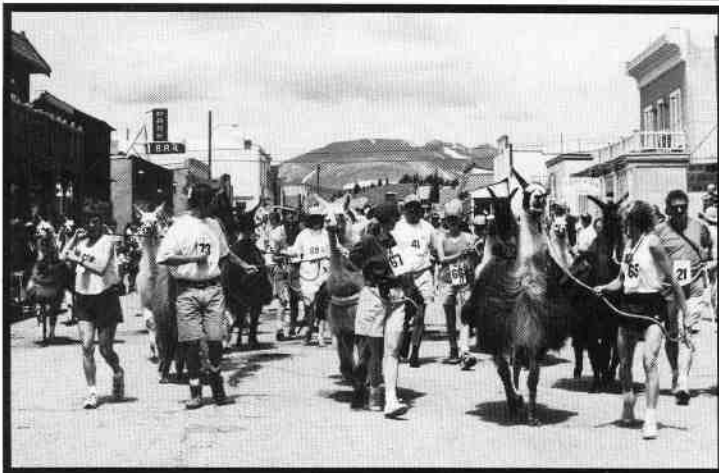


The Fun.....

## **The Fairplay**

The Run.....

## **Llama**



## **Race**

and The Walk.

July 26th, 1997

*Serenity Lane's Blue Belle  
LW Blue Boy x Iman JF*



## **SERENITY LANE LLAMAS**

*"Fine South American Breeding & Show Stock ~ since 1984"*

**Bill & Donna Brown**

**Woodland Park, Colorado**

**719/687~1224 Fax 719/686~1961**

**Email ~ [selnllamas@sprintmail.com](mailto:selnllamas@sprintmail.com)**

In this issue.....

**Calendar of Events 6**

**Bios of RMLA Board Member Nominees 11-12**

**Wound Care**  
*by Clare Hoffman, D.V.M. 13*

**.....Aren't they cute?  36**

**Estes Park Wool Market Llama Show 20**

**Jelly Bean Classic 33**

**1997 RMLA Conference Preliminary Schedule 30**

**National Western Photo Contest 26**

**Douglas County Summer Classic Llama and Alpaca Youth Show 39**

RMLA Booth at FiberFest .....	8
Thumbs up to Pet Therapy - Llamas.....	10
RMLA Library Update .....	18
Fire and Flood Alert.....	28
New RMLA Members .....	42
RMLA Membership form .....	43
RMLA Journal Advertising kit.....	44

# Rocky Mountain Llama and Alpaca Association

## Board of Directors

<i>President</i>	<i>President-Elect</i>	<i>Vice-President</i>	<i>Secretary</i>	<i>Treasurer</i>
<b>Linda Kyriopoulos</b> 2680 West 5700 South Mt. Sterling, UT 84339 (801) 245-3529 (801) 245-3529 fax	<b>Bob Riley</b> P.O. Box 1189 Lyons, CO 80540 (303) 823-5409 (303) 823-0643 fax llama@orci.com	<b>Jerry Dunn</b> 14550 W. 50th Ave. Golden, CO 80403 (303) 277-1129 (303) 277-1129 fax	<b>Julie Messick</b> 7411 North Road 2 East Monte Vista, CO 81144 (719) 852-4852 (719) 85204852 fax jmessick@amigo.net	<b>Lougene Baird</b> 2210 Pine Wood Road Sedalia, CO 80135 (303) 688-1887 (303) 688-6814 fax lbaird@ai.com

## Other Volunteers

<i>Librarian</i>	<i>Photographer</i>	<i>Caring for Llamas &amp; Alpacas and 4-H</i>	<i>Membership</i>	<i>Journal Editors</i>
<b>Sharon Herbold</b> 15350 Highway 83 Colorado Springs, CO 80921 (719) 495-3092 (719) 495-3092 fax	<b>Bob Riley</b> P.O. Box 1189 Lyons, CO 80540 (303) 823-5409 (303) 823-0643 fax llama@orci.com	<b>Julie Messick</b> 7411 North Road 2 East Monte Vista, CO 81144 (719) 852-4852 (719) 85204852 fax	<b>Judy Sealy</b> 593 19-3/4 Road Grand Junction, CO 81503 (970) 241-7921 (970) 241-7921 fax	<b>Ron and Marie Hinds</b> 9349 Tammy Lane Parker, CO 80134 (303) 841-4889 (303) 841-7635 fax sdflama@bewellnet.com

## Committees

<b>Committee</b>	<b>Liaison</b>	<b>Chairperson</b>
Finance	Bob Riley	Ken Rogers
Continuing Education	Jerry Dunn	Jan Redenbarger & Erma Hast
4-H and Youth	Linda Kyriopoulos	Linda Kyriopoulos
Marketing	Bob Riley	Bon and Cindy Burgess
Nominations/Elections	Linda Kyriopoulos	Craig Dierksen & Rosie DeLullo
Research	Bob Riley	Ron Baird
By-Laws	Jerry Dunn	Jo Riley
Fiber	Julie Messick	Sharon Beacham
Membership	Lougene Baird	Judy Sealy
Library	Lougene Baird	Sharon Herbold
Events Committee	Jerry Dunn	Jerry Dunn
Publishing	Lougene Baird	<i>Journal: Ron/Marie Hinds</i>

<http://www.llama.org/rmla>

## Journal Staff

Editors: Ron and Marie Hinds Associate Editors: Bob and Barbara Hance, Marilyn Arnold, Stanton Lacher & Gail Segreto, Candy & Tracy Montgomery

<b>Issue</b>	<b>Deadline</b>
November 1997 .....	October 15
January 1998 .....	December 1
March 1998 .....	February 1
* May 1998 .....	April 1
September 1998 .....	August 1
November 1998 .....	October 15
January 1999 .....	December 1
March 1999 .....	February 1
* May 1999 .....	April 1
July 1999 .....	June 1
September 1999 .....	August 1
November 1999 .....	October 15
January 2000 .....	December 1
* Promotional Issues	

**Journal deadlines**

↑  
6 issues/yr.  
↓

© 1997 The Rocky Mountain Llama and Alpaca Association  
Reproduction of articles herein is authorized subject to written permission being obtained from the individual authors. "Exchange Newsletters" may reproduce articles as needed so long as the author and the publication are given credit for the original work. Exception: Articles denoted with "All Rights Reserved" must get approval from the author.

**NOTE:** The information contained in this Journal is not intended to be a substitute for qualified professional advice. Our readers are encouraged to consult with their own veterinarian, accountant or attorney with any questions concerning their animals or business operations. RMLA is not responsible for any losses resulting from reader's failure to heed this caution.



# WHY STEWART'S ROYAL ALPACAS?

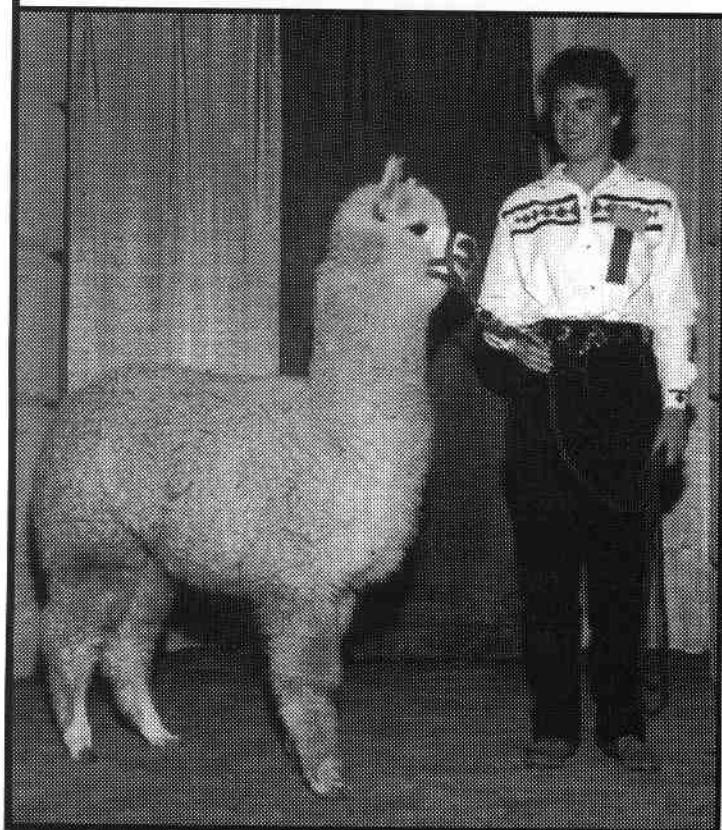
- \* CHILEAN, PERUVIAN, BOLIVIAN
- \* Wide choice of colors
- \* Assistance to new breeders
- \* Competitive prices with volume discounts
- \* Young healthy animals
- \* Small farm for personalized support
- \* Boarding for your Alpacas
- \* Superior Quality Crias, Weanlings and Adults for sale

- \* EXCEPTIONAL HERDSIRES
- \* **Technical Assistance with**
  - Nutrition
  - Ranch Layout
    - BARN
    - FENCES
    - WATERERS
  - Camelid Reproduction
  - Marketing your Alpacas and yarn

Easy to Care for  
Profitable  
Family Enjoyment  
Excellent  
Tax Advantage

**Call for appointment  
to visit and have  
a hands on experience.**

190 STEINMEIER  
CAÑON CITY, CO 81212  
Ph. & Fax (719) 275-2701  
E-mail: [Alpacastew@aol.com](mailto:Alpacastew@aol.com)



# Calendar of Events

**August 22nd & 24th; Nebraska State Fair ALSA Llama Show, Lincoln NE;** For more information contact Superintendent: Eunice Cernohlavek 6405 West "0" St. Lincoln, NE 68528-9129 phone/fax (402)475-8636. ALSA Judge: Mary Beth Hartsough.

**August 23 & 24: TTEAM Training for Llamas, Alpacas, & Humans with Dale Pettigrew.** Rockin' Double D Ranch, Kiowa, CO. Learn how to communicate more effectively with your llamas. Contact Craig Dierksen or Rosie DeLullo, 303-621-2584.

**August 25th - 28th; California State Fair ALSA Show, Sacramento, CA.** Sponsored by CAL-ILA. Redesigned to meet exhibitor requests. Contact: California State Fair, Attn: Livestock Office, Jay Carlson, P.O. Box 15649, Sacramento, CA 95852, (916)263-3010, Or call: Sharon Griffiths (916)878-1040 or Lora Crawford (209)632-6891.

**September 13th-14th; L.O.C.C. Fall Classic Llama Show, Colo. Springs. CO - Penrose Equestrian Center.** ALSA sanctioned & RMLA sponsored Indoor arena, 400 Stalls, Halter and Performance classes, Adult and Youth classes, outdoor races and obstacle course. Had 228 llamas at last year's show. For information contact Mark Wittrup at 719-683-2834.

**October 4th & 5th; Driving Clinic at Bear Track Farm.** Contact Jerry Dunn at 14550 W. 50th Ave., Golden, CO 80403-1707 (303)277-1129.

**October 4th & 5th; Click and Reward Clinic with Jim Logan.** Sponsored by Bobra Goldsmith, Rocky Mountain Llamas, and John & Sharon Beacham, Pheasant Hill Farm. Contact: Bobra Goldsmith, 303-530-5575, e-mail:RkyMtLlama@aol.com

**October 11th & 12th; RMLA Conference '97 Montrose, CO.** The Business Meeting and Dinner will be held at a local conference center. Workshops will be held Saturday and Sunday. The RMLA Fiber Co-op Booth will be there. Registration is \$25.00, and that includes dinner! Take this opportunity to visit the Western Slope of Colorado. Erma Hast is the Chairperson (970)249-3083.


**October 11th; 2nd Annual Alpaca Open House, Parker, CO 12181 Woodland Trail.** This is the second year for this event. It is sponsored by local Alpaca owners and is a great event for folks to get in some quality Alpaca Lovin'. The Alpacas will be there. Stop by and fall in love all over again. For more information contact Sharon Loner (303)840-5250 or Ron Hinds (303)841-4889.

**October 18th; 1st Annual Fall Alpaca Festival. Parker, CO High Prairie Farms Equestrian Center.** This one day event is sponsored by the Alpaca Breeders of the Rockies. Come for some hands-on with alpacas. Lots of breeders will be there as well as Alpaca related vendors. Free to the public held indoors lunch will be available. For more information contact Ron Hinds at (303)841-4889.

NOTE: Looking to transport your animals to an event outside your area or state? You would do well to contact the state veterinarian to determine if any quarantine restrictions are in force for Vesicular Stomatitis in the area your going.

**October 18th; Llama Private Treaty Sale & Bazaar with Fall Fiberfest, Auburn, CA. Gold Country Fairgrounds. Llamas.** Alpacas for sale, vendors, demos, wool products in conjunction with The Sierra Shepards. Under the trees at the beautiful Gold Country Fairgrounds in Auburn. Covered facilities available in case of showers. Ranch displays encouraged. Reserve space now! For details, call (916)273-2998 or (916)273-2568. Free to the public.

**January 10th -11th, 1998; National Western Llama Show, National Western Stock Show, Denver, CO** 130 stalls will be available. Entry deadline for entry is December 1st, 1997. To request a premium booklet contact National Western at (303)297-1166, fax at (303)292-1708 or 4655 Humboldt St. Denver 80216-2818. Included this year is pleasure driving class and a photo contest (see pg 26), and each will have their own display stall. Ken Gaunt will be sending out information.



**HANSEN LLAMA FARMS**  
1040 NORTH 7800 EAST  
HUNTSVILLE, UTAH 84317  
(801) 745-3621

Gus & Jeannie Hansen

**FROM EWE TO YOU**  
*Hand Processed Fibers*  
• Handspun Yarns • Classes  
• Custom Spinning & Knitting



Linda Duli  
303-646-9245  
5128 Cnty. Rd. 142  
Elizabeth, CO 80107

**COME SEE THE DIFFERENCE "MALLONIZING" MAKES**

Our Mallon-trained llamas are completely desensitized,  
calm, polite and friendly

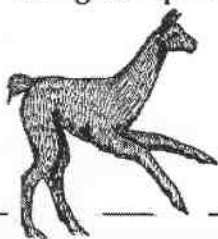
Here's a sample of the 17 llamas currently for sale:

**PHF CYBELE** 12-94 (Peruvian Picacho x PHF Penelopie) Sweet disposition, big. Bred to Peruvian Cadfael. Dark seal bay. Free re-breedings as long as you own her. \$5,000

**PHF DEMOISELLE** 10-96 (PHF Solomon's Seal x Southwest Willow) Full sister to PHF Alouette, ALSA Halter Champion. Dilute appy. Free breedings as long as you own her. \$4,000

**PHF RAMBUTAN** 6-96 (Peruvian Picacho x PHF Delphinium) Well balanced, tall, future herd sire. Medium wool. White and dark brown. \$2,000

**We have gelded and intact males available for packing.** All have basic training and good quality, medium fiber. \$750 to \$1,500 range.



303-666-9437 (Denver area) or 1-800-465-2567  
John and Sharon Beacham, 2380 - 95<sup>th</sup>. Street,  
Boulder, Colorado 80301



**Pheasant Hill Farm**  
Llamas

# RMLA Booth at FiberFest

By Mike Brown • HCR 74 Box 22628 • El Prado, NM • 87529 • (505)776-1137

The RMLA booth at FiberFest held this past June in Ohio was lots of fun. I met many new and interesting people, talked a lot about llama fiber, and learned a great deal. However, Fiberfest was not a financial success for the RMLA.

First, because its original founder had died this past year, Fiberfest was sold. It's new owners decided to move the show to Ohio — about a six hour drive from its old home in Michigan. Because of the large geographic switch and the changing of the guard, Fiberfest has become a new show that, like most new shows, has many bugs to work out before it will be as well attended as the Fiberfest in Michigan was.

Although the facilities at Lake Farmpark in Ohio provided an excellent venue for a show of this type — probably four times the size of Estes Park Wool Market - very few people turned out for it. What should have attracted thousands of people, only brought hundreds. The organizers threw a huge party — a true Fiber Fest — but no one came. And why this occurred is unknown to me. Hopefully, they will figure it out for next year.

The RMLA booth grossed just over \$400 — not a shining financial performance. The lack of sales was due in part to the scarcity of people at the show, but those that did come were there to buy. People walking around the vendor area were holding large bags of roving and raw fleece, and rovings did a brisk business in our booth. A major contributor to the lack of sales in the RMLA booth was that we didn't have enough of the correct inventory — raw fiber. By chatting with people who came to the booth, it was obvious that these people were at the very least handspinners, many of them hard-core. They were not interested in finished goods or yarn except as sources of inspiration for things to make themselves. Yet, the bulk of our inventory was made up of yarn and finished goods. I'm not saying that no finished goods or yarn should be in the booth. They should if for no other reason than to show people what can be made from llama. Thus, my

recommendation is that if RMLA decides to attend Fiberfest in the future, an inventory that targets handspinners — raw fiber and roving — should be stressed. Fiberfest is a new show for the RMLA, and many of our assumptions regarding the market were incorrect. Live and learn!

On the positive side — yes, there was one! — people were very interested in llama fiber, and I spent much of my time educating people about it's uses and versatility. Everyone who came within ten feet of the booth was handed a "Llama Fiber Facts" brochure. Several people — retailers looking for a wholesale source of llama yarn — were also very interested in the national llama fiber co-op. Finally, llama owners from the midwest and east were very pleased to see that we had put together a booth specializing in llama fiber. The booth itself received many compliments. As an advertisement to the fiber world, the RMLA booth was a great success.

Should the RMLA return next year to Fiberfest? I think so. Sure, looking strictly at sales, the booth did not do well. But, I think that Fiberfest has great potential to become what it was, and once this happens the RMLA will be seen as a national asset to the llama fiber movement. The RMLA made a very large statement by just being at Fiberfest. We were the only llama organization that showed we were committed to marketing llama fiber. This is great PR. We have started the ball rolling, but we need to keep it going. We need to be patient and preserver.

I would like to thank Bob and Jo Riley for their encouragement and giving me the opportunity to take the booth to Ohio. Also, thanks go out to Sharon Beacham for her help with the paperwork and organizing the inventory. Of course, a big thanks go to all the folks who helped fill the booth with many beautiful items, which received nothing but compliments. Last, but not least, I want to thank Sally German for her generous help in running the booth over the weekend and with packing up on Sunday. Her energy, enthusiasm, and conversation were greatly appreciated.







***ALSA Halter Champion  
GLL Java***

*Crazy Mountain Man X Lovejoy*

*Grand Champion Medium Wool Male*

*'94 and '96 NWSS*

*'94 and '95 EPWM*

*'95 American Royal Livestock Show*



**Call either ranch  
to reserve your  
breeding now!**



**Winding Trails Llamas**

**Jan and Jim Redenbarger  
303.642.0140, FAX 303.642.1602**

**Hamarage**

**Mary Beth and Joe Hartsough  
970.785.2463**



## TO PET THERAPY-LLAMAS!

By Judy Sealy, RMLA Membership • Grand Valley Llamas • 593 3/4 Road • Grand Junction, CO • 81503 • (970)241-7921

On June 19, 1997, POWER RANGER and I were invited to the annual conference of Professional Activity Directors held at the Grand Junction Hilton. One hundred twenty nursing home activity directors from the entire state of Colorado were in attendance. Because POWER RANGER has been going to nursing homes for the past year and Grand Valley Llamas have been visiting them for over six years, we are well known to the local facilities. The purpose of our invitation was to discuss the advantages of using llamas for "Pet Therapy". We shared the stage with two Delta certified therapy dogs. Thanks to Sally German, I have an understanding of the certification procedure for therapy llamas!

POWER RANGER entered the Hilton well-

side, we discussed "Why llamas are excellent pet therapy animals." We also shared



recollections of special people who's hearts have been touched by llama encounters. The audience was enthusiastic and asked many questions about llamas' use in

therapy. The meeting proceeded under the direction of a local nursing home activity director. POWER RANGER took the opportunity to kush alongside my chair. He chewed, hummed occasionally, stretched out his neck and took a nap on the soft carpet! He awoke as the meeting concluded and people approached him for one last touch.

The entire experience was heart-warming for all who attended. The acceptance of llamas in our local nursing homes has snowballed over the years with new facilities now making plans for their llama visits, too.



groomed and proud of it! We entered through the main door, walked through the lobby, open restaurant area and into the Ball Room. Following the introduction with POWER RANGER standing politely at my

# Bios of RMLA Board Member Nominees

---

## **Bruce E. Ellis - RMLA President Elect**

I have owned llamas since 1993. Like most llama owners, these wonderful creatures have significantly touched my life and my family. I was initially attracted to llamas because of their easy care and because of my love of backpacking in the mountains. I have always loved the mountains and to date have summited 45 of Colorado's 54 fourteeners. I am a member of the Colorado mountain Club. I hope to complete my "grand slam" sometime next summer. Since the beginning I have discovered that I enjoy many other aspects of llamas such as showing.

I am currently engaged in a new business venture, Bee Group Inc. a consulting and training company specializing in high performance work systems and sales management resource for fortune 100 companies. This capitalizes on my 25 plus years of business experience while allowing me the flexibility to enjoy the "llama lifestyle" with my family.

I believe it is important to remember the great strides that were made by the early leaders of RMLA and to continue in that tradition. One of our biggest challenges is to make use of the various new means of distribution available today to reach not only our membership, but the public at large. I look forward to a productive and fun year.

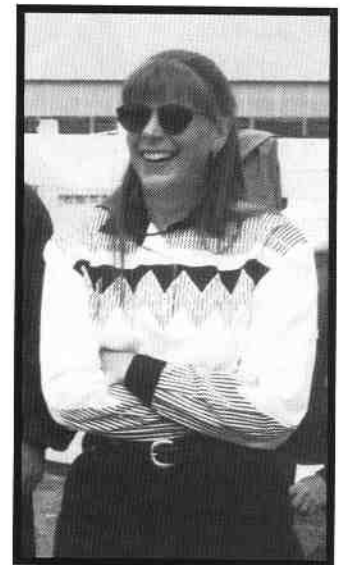
## **Jan Redenbarger - RMLA Secretary**

I became involved with llamas in 1987 when backpacking with a 2 year old became too much to handle. The weight of all the gear and car camping for the next 10 years was not an acceptable option. My son Ty, is now 12 and my daughter, Jill, is 8 and we have been on the trail with our faithful companions ever since. From llama packing we have expanded into llama shows, breeding, llama packing orientation classes and volunteering for our wonderful organization, RMLA.

I feel that continuing member education is very important through seminars, mini-Conferences and workshops. I am also behind RMLA for sponsoring so many events every year.

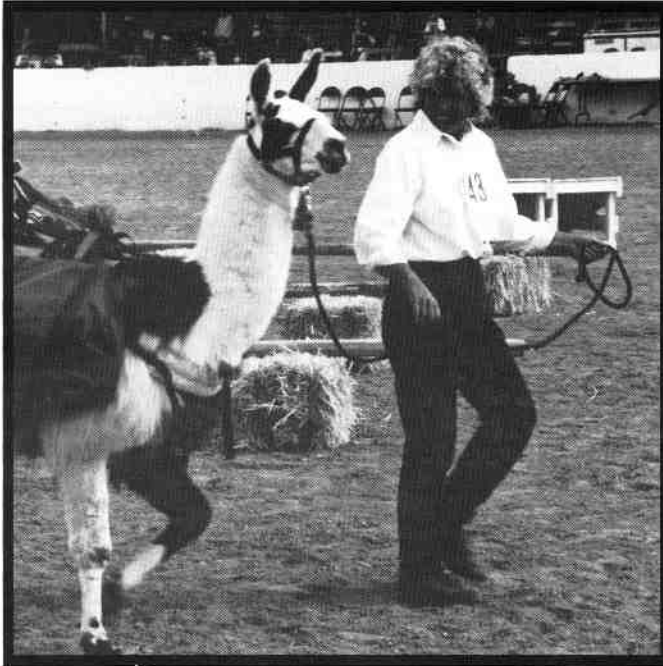
Thank you for your nomination as secretary and I will be honored to work with the Board on behalf of the RMLA members.

Jan Redenbarger, Winding Trails Llamas - Golden, Colorado



*Bios continued on next page.....*

## Jerry Dunn - RMLA Vice-President



I have been a llama owner and trainer for 12 years and enjoy participating in llama shows and other llama activities. I have been a coordinator and committee member involved in the organization of the RMLA conference in Longmont 1994 and 1996, a board member for the Youth Education Fund since its formation in 1989, and superintendent of the Llama Show at the National Western Stock Show for two years. In May, 1995 I retired after 32 years of teaching and coaching in the Jefferson County school system in Colorado. Working with kids and writing about their experiences with llamas has been most rewarding.

I am proud to be a member of RMLA based on the support of the membership to maintain a vision for the industry by demonstrating a strong interest in the promotion of the llama species through education, research, and marketing. I would like to be more closely involved in these activities and help to maintain the camaraderie of the trend setting RMLA.

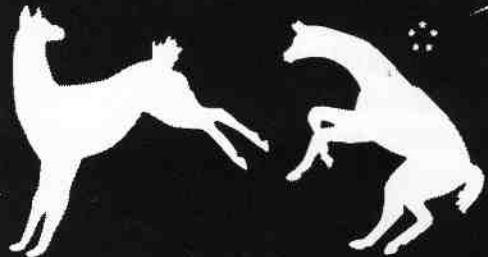
It is with great pride and honor that I accept the nomination for vice-president of RMLA.

Jerry Dunn • Bear Track Farm • Golden, Colorado

Coyote



HIGH HOPES LLAMAS



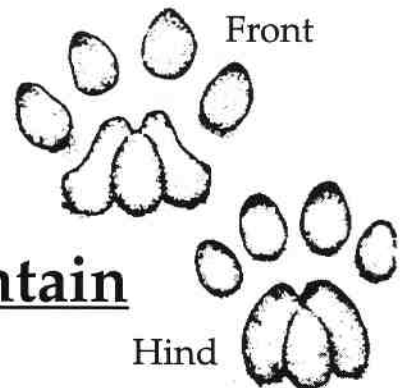
Stan Lacher  
Gail Segreto

P.O. Box 506, Elizabeth, CO 80107 • 303-646-0989



Ron & Marie Hinds  
9349 N. Tammy Lane  
Parker, CO 80134-7511  
(303) 841-4889 Voice  
(303) 841-7635 Fax  
Internet  
sdfllama@bewellnet.com  
<http://www.cria.com/sdf>

Breeding  
Sales  
Fiber



Mountain  
Lion

Hind



# WOUND CARE

by Clare Hoffman, D.V.M.

## INTRODUCTION; KNOW YOUR LIMITS

Raising llamas demands a general knowledge of wound care. When faced with an injured llama, a medical expert may not always be available to treat and/or offer advise on care - as often you are out on the trail or live in a rural area where a veterinarian is not readily available. Knowing and performing proper wound first aid could mean the difference between life and death or determine between a temporary and a permanent disability. You can prepare for such an emergency by reading about wound care, preparing a first aid kit (see Figure 1) and obtaining training from your veterinarian. If you are not adequately knowledgeable or do not feel comfortable in performing wound first aid, you should **not** attempt haphazard first aid treatments. You must assess your knowledge and capability limits. You must know what to do and what not to do, as you could easily cause further injury to the llama if your first aid is not done correctly and carefully.

## CAUSES OF WOUNDS

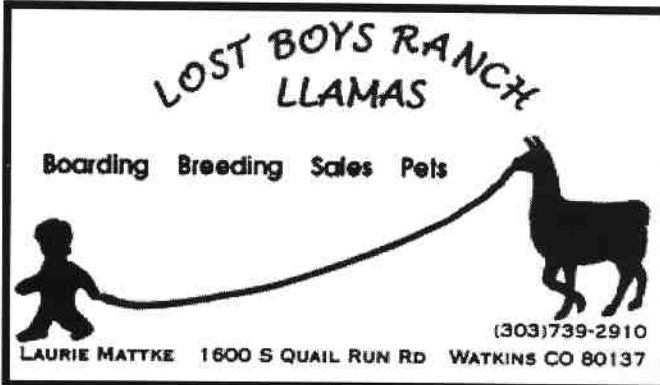
Care should be taken to make sure that the stable, pen, or pasture area is free from potential wound-causing hazards, such as sharp edges on a barn, protruding nails, or trash and debris. However, even with immaculate living areas, llamas may still get hurt. Llamas are intelligent and careful enough that they do not get wounded very often. When they do, most wounds are not serious. However, when llamas are confined, grouped, trailered, or out on the trail, injuries may occur. Causes of wounds vary, but a fence, tree branch, or a nail sticking out of a board could result in a wound. Sometimes, llamas can injure each other, especially when intact males are housed together. Fighting males can inflict serious wounds upon each other if they have sharp fighting teeth. These battles can result in shredded ears and infected/abscessed leg and testicular wounds. Baby llamas are also more prone to wounds, as they do not know where the environmental obstacles, such as fences

and trees, are located and their "brakes" are not yet fine-tuned for quick stops. When playing or being chased, a youngster may tumble over an obstacle or run into a fence resulting in an accidental injury.

Pack-llamas venturing out on a trail meet all sorts of obstacles that usually do not cause any problems, but potentially could cause an accident. For example, when crossing a stream, sharp rocks could cut the llama's foot or leg. Tree branches encountered on the trail are often implicated for wounds. A wild animal may also bite and injure (or unfortunately kill) a llama on the trail or at home in a rural setting. Lastly, even well-meaning people could accidentally cause a wound. For example, when trying to perform procedures such as trimming toenails, a slip of a sharp object could cut the llama. {Although quicked toenails tend to bleed, they are rarely serious} A tight-fitting halter, or a halter left on a llama that gets caught on an object such as a branch or fence post, or a poor fitting pack could result in an injury.

## ABRASIONS AND BRUISES

Wounds are generally classified according to their depth as closed or open wounds. Closed wounds, which are less serious, are wounds that do not penetrate through the entire skin layer. An abrasion or scrape is an example of a closed wound. Abrasions are rarely serious and do not bleed very much. Although abrasions are not emergencies, they may be painful to the llama, causing the llama to be sensitive to touch in the area of the abrasion.



LOST BOYS RANCH  
LLAMAS

Boarding Breeding Sales Pets

(303)739-2910

Laurie Mattke 1600 S Quail Run Rd Watkins CO 80137

In addition, even the most minor abrasion could result in an infection. Normal intact skin is quite a formidable barrier to microorganism entry into the body but any disruption of this barrier offers an entry porthole for the numerous microorganisms on and around the animal. Due to this infection potential, the llama should be checked to make sure it is current on clostridial vaccinations. Also, your veterinarian should be consulted regarding the need for antibiotics.

Since treatment for abrasions involves preventing infection and offering the llama soothing relief, abrasions are fairly simple to care for and heal quickly. Gentle rinsing of the abrasion with warm saline removes dirt and debris. {Saline is a sterile mild salt water solution.} This should be followed by application of an ointment to decrease the likelihood of infection, to keep the skin supple and prevent cracking. Povidone-Iodine or Nitrofurazone ointment works very well on abrasions. The abrasion will then form a solid scab which is nature's own perfect bandage. This protects the newly repaired skin as it heals. When the skin is healed the scab will fall off.

Bruises do not cut through the skin and thus constitute another type of closed wound. These are often caused by a fall, kick, or a poor fitting pack. Although the skin is intact, underlying tissues such as muscle and blood vessels may be crushed or torn. Usually the only signs these bruised llamas exhibit are pain in the area of the bruise, some heat and swelling due to the inflamed tissues. Wound care includes application of cold packs if the bruise is recent (within the first day) to minimize swelling. Subsequent bruise care (after 24 hours) may include application of warm packs to increase circulation which promotes removal of the accumulated fluid out of the area. Consult with your veterinarian if your llama is acting painful for recommendations on pain relief.

Occasionally a bruised area may result in a leaking blood vessel causing a pocket of blood accumulation called a hematoma. A seroma can also occur which is a pocket of serum, the liquid portion of the blood without the red blood cells. These look and feel like water balloons underneath the

skin. First aid would include initial cold packs and subsequent warm packs as described above. This treatment usually remedies small fluid accumulations. However, if the seroma or hematoma continues to enlarge or is large to start with, a veterinarian usually needs to surgically drain it. If left untreated, a large pocket of blood or serum can result in a blemish and offer a great environment for microorganisms to flourish.

## LACERATIONS

Lacerations or cuts are classified as open wounds and are more serious. These injuries penetrate the entire skin layer to expose the tissue below. They are often painful, can tear large blood vessels and may damage underlying tissues. Lacerations also provide a large opening for microorganism entry, thus increasing the chance of infection complications.

The initial first aid for lacerations is to stop excessive bleeding. Most of the time when you notice a laceration on your llama, it has already ceased bleeding. Luckily, most wounds do not bleed very much and those that do, ooze blood slowly. However, occasionally it is possible for a large blood vessel to be cut or torn and result in significant bleeding. With severe bleeding (steady drip or more), first aid should be used to stop the bleeding. Application of direct pressure to the bleeding area is the best way to stop bleeding. This can be done by firmly holding a wound dressing such as gauze, cotton, or a cloth with your hand directly over the bleeding area. Cold pressure, such as a cold wash cloth, would work even better, as the cold helps to shrink the blood vessels. As blood clots form within the cloth, do not remove the cloths or the bleeding will resume. Instead, if blood soaks through the entire dressing, add additional layers of dressing and continue direct hand pressure. On the legs, a bandage can be used to hold on the layers of dressing. Do not remove the bandage until a veterinarian arrives, or else it will restart bleeding. Although the bandage should apply some pressure to stop the bleeding, it is not a tourniquet and should not be so tight so as to cut off all blood supply to the leg! A tourniquet is rarely needed, is quite dangerous, and should only be used for severe and life-threatening bleeding that cannot be controlled by

any other means. If the decision is made to use a tourniquet, you risk losing the limb in order to save the animal's life.

In llamas as well as humans, shock can occur with many different medical problems but it frequently is a serious sequel to rapid loss of large amounts of blood. When in this critical state, shock is a means of trying to live by shutting down non-essential bodily functions thus attempting to maintain and preserve important organs such as the heart and brain. During shock blood flow decreases to skin, mucous membranes and muscle. Therefore the llama's skin (especially over legs, face and ears) and mucous membranes (such as gums, tongue, inner lining of eyelid, and vagina) are pale to blue in color and feel cool to the touch due to the decreased warm blood flow. Another sign of shock indicating circulation failure is a prolonged capillary refill time of more than 2 seconds. This can be checked by blanching the tiny blood vessels or capillaries under the gums with finger or thumb pressure. When removing the pressure, the area will be blanched, but pink color should normally return in less than 2 seconds. If it takes longer, it is a sign of poor blood circulation to the area and shock. Additional signs of shock are weakness, a rapid and weak pulse which may be felt on the side of the face or inner thigh, and irregular breathing patterns.

Shock is an emergency situation and must be treated by a veterinarian, but until a veterinarian is available, life saving first aid will help.

1. Stop bleeding as described above.
2. Assist respiration if it isn't adequate. If the llama is down, it is easier for the llama to breathe if lying on its chest rather than its side. You can help prop the llama by putting a hay bale along its side for support.
3. Don't unnecessarily move, restrain or stress the llama. Excessive stress can be fatal. The llama should be kept comfortable and warm.
4. Don't give the llama any tranquilizers or sedatives to "make it feel better", as many medications are very harmful if given to an animal in shock.

5. Fluid replacement will be the mainstay of the veterinarian's treatment of shock for your llama, as so much blood may have been lost. The fluid given by your veterinarian may be blood or other sterile electrolyte solutions which are injected directly into the veins. If the shock is not severe, the fluids may be given via other routes. Fluids are not absorbed very well from the stomach if given orally during shock. However, if your veterinarian isn't available and your llama is in dire straits, this may be the only life saving alternative of fluid replacement that you are qualified to administer. In this situation, slowly give small amounts of warm water or warm water with electrolytes (Power Burst®, Gatorade®, Lifeguard®) frequently (e.g. 1/2 cup every 15 minutes to the adult llama). Only give oral fluids if the llama is conscious, does not have trouble swallowing the fluids and is not regurgitating.

#### **OPEN WOUNDS THAT REQUIRE SUTURING**

Depending on the location, amount of tissue damage and degree of contamination, fresh wounds that penetrate through the entire skin layer can be sutured. Wound care until the veterinarian can arrive to suture the wound should be aimed at minimizing further contamination. The majority of traumatic wounds are contaminated and overzealous first aid often causes further contamination resulting in a wound that cannot be sutured, heals slowly or becomes infected. Many antiseptic powders and wound ointments can actually increase wound contamination and cause further tissue irritation. The best first aid for the wound until it can be seen by your veterinarian is simply protection by applying a large clean dressing (gauze, cotton, cloth, diaper) to cover the area. It can be held, taped or bandaged in place. This cover will prevent further contamination with feed material, bedding, dirt and hair. If your veterinarian determines that the wound does require suturing, it can be cleaned easily and won't be covered in sticky ointments and abrasive powders. Your veterinarian will advise you of specific wound care following examination and/or suturing of the wound.



## OPEN WOUNDS NOT AMENABLE TO SUTURING

If a wound is an older wound, has a significant amount of contamination, or has a lot of dead tissue, it cannot be sutured initially. Depending on the wound, it should heal as an open wound or may be amenable to closure with sutures at some later date. Even if these wounds appear to be small and minor, it is important that you have a veterinarian examine them. Some wounds, such as puncture wounds, look innocuous from the surface and yet have a great deal of damage under the skin and are extremely prone to infection. In addition, wounds caused by foreign bodies, such as wood, glass, porcupine quills, may still have part or all of the foreign body present in the wound. Wounds that are close to or penetrate certain areas of the body such as the eye, joints, or genitals are often more serious than they appear. Wounds may also have devitalized (dead) tissue that needs to be debrided or removed by your veterinarian to allow appropriate healing. The necessity of antibiotic usage and vaccination boosters can be discussed with your veterinarian at the time of the examination.

Until an older wound can be seen by your veterinarian for treatment and advise, some basic wound care would be in order. Before beginning your first aid of the wound, make sure that the llama is properly restrained, as you don't want a struggle to result in another wound to your llama or one to you. Once it's restrained, the wound should be cleaned in such a manner that you do not cause further contamination. The surrounding hairs that are long enough to dangle into the wound should be clipped. Protect and cover the wound as you are cutting the hairs, as you don't want them to fall into the wound. A saline-moistened gauze or a water soluble substance such as K-Y Jelly® covering the wound works well for protection. After clipping, the surrounding area can be cleaned and examined.

Next, you should clean the actual wound, as bacteria, soil, and other debris directly irritate the wound, increase the likelihood of infection, and thus delay wound healing. You must clean these

wounds **very** gently or else you could cause further damage and irritation to the tissues. Do not apply any substance directly to a wound that you wouldn't be willing to put into your own eyeball! Do not use any caustic substances. {Beware, as many of these caustic substances are commonly sold as "miracle" wound care products.} Sterile saline is mild and excellent for cleaning wounds. If saline is not available, tap water will suffice. The saline can be applied to a clean gauze pad and then the wound is cleaned from the center to the periphery, so as not to carry contaminants back into the wound. Once a pad is used on the peripheral regions, do not reuse that pad. Use a fresh one with each washing. In dirty wounds where this method would prove to be very slow, lavage or wound irrigation is an excellent way to clean debris thoroughly and quickly from the wound. Lavage should be done with saline or water if saline is not available. A large syringe or a spray bottle will work to irrigate the wound, but thorough lavage is achieved by using a Water Pik® at its lower setting and spray the wound until it's clean. When the wound appears "water-logged" or slightly grayish in color, you have lavaged the wound sufficiently.

Antiseptic products are commonly used to clean wounds. They should be mild enough so as not to damage tissue and yet strong enough to aid in decreasing bacteria numbers. Chlorhexidine Diacetate Solution (Nolvasan®) at about .05% or less dilution or Povidone-Iodine Solution (Betadine®) at .1-.2% seems to work well at killing bacteria with minimal tissue damage. Antiseptics can be mixed with saline or water and used along with lavage or gauze cleaning pads.

Soaps are generally too harsh for wounds. However, occasionally surgical scrubs such as Povidone-Iodine Scrub (Betadine® Scrub) are used even though they are mildly toxic to wounds because of their antiseptic abilities and the soapy/foaming action which eases contaminant removal from very dirty wounds. If soaps or scrubs are used, make sure to follow the scrub with a very thorough rinse.

Although hydrogen peroxide is commonly used because of its foaming action, it is not a very effective antiseptic and can be toxic and damaging to



the tissue and therefore is not recommended. Likewise, other harsh chemicals such as alcohol should not be used on wounds. Consult with your veterinarian if you choose to use other antiseptics not mentioned in this article regarding their safety and effectiveness.

After the wound has been cleaned it may be amenable to further protection with a bandage. Obviously only some areas of the llama can be bandaged. Leg wounds are often bandaged which provides some immobilization of the wound, as movement delays healing by physically disrupting newly formed tissues. In addition, bandages help to decrease further contamination and swelling. Bandages also hasten wound healing by slightly increasing the temperature of the wound and surrounding tissues. Initially an adherent dressing such as gauze is useful to absorb drainage and dead tissue from the wound. If after an examination by your veterinarian, it is decided to continue bandaging the wound, you would likely switch to a nonadherent dressing such as Telfa® pads. The bandage is then changed whenever it feels damp or becomes malodorous. After removing the old bandage, wash the wound as described above and apply a new bandage. Initially this care may be needed daily and subsequently, as healing progresses, it may be every 4-5 days.

If an area is not amenable to a bandage, and you continue to provide wound care after consultation with your veterinarian, the wound must be cleaned regularly. Any drainage from the wound should be cleaned from surrounding tissue, as the drainage is irritating to normal skin. This drainage clean-up is easier if you apply jelly such as Vaseline® around the wound so that the discharge does not stick to the skin. The llama should be kept in a reasonably clean area, as bedding, dirt and insects can complicate healing. If the insects are particularly bad, you can apply repellent around the wound, but if you put repellent directly on a wound, it will delay wound healing.

Finally, to help achieve quick and thorough wound healing, the llama must be in good overall health. The llama will use extra nutrients to heal damaged tissue and must have an adequate diet.

Malnourished and parasite-laden llamas will have poor wound healing capabilities. Older, weak or ill llamas, as well as llamas receiving some long-term medications such as corticosteroids will have less than ideal healing. Keep the llama well fed, healthy, in a clean environment, and the healing will be maximal. Report any bad odors, discolorations, flaps of loose tissue, swelling, or discharges from wounds to your veterinarian. With your vigilant care and advise from your veterinarian, even the worst looking wound can heal with good results.

## FIGURE 1

### FIRST AID KIT FOR WOUNDS

- Gauze sponges - 100 2"x2" or 3"x3" or 4"x4".
- Gauze rolls - 6 3-4" rolls.
- Cotton - 2 rolls.
- Tape - 2 rolls (Elastikon® or ExpAndover® and white tape).
- Vetrap® - 2 rolls.
- Sterile Telfa® pads - 15 3"x4" or 4"x4".
- Bandage Scissors - 1.
- Sterile Saline Solution - 2 liters.
- Water-Pik® with accessories or spray bottle or 60cc syringe.
- Povidone-Iodine Solution (Betadine® Solution) - 1 quart.
- Povidone-Iodine Scrub (Betadine® Scrub) - 1 quart.
- Povidone-Iodine Ointment (Betadine®) - 1 jar.
- Vaseline® - 1 jar.



**STERLING SPRINGS RANCH**  
*"Performance Bred Llamas"*

Steve & Linda Kyriopoulos  
(801) 245-3529

2680 West 5700 South  
Mt. Sterling, Utah 84339

# RMLA Library Update

By Sharon Herbold, RMLA Librarian • Pikes Peak Woolies • 15350 Hwy 83 • Colorado Springs, CO • (719)495-3092

---

These are new items in the library:

## BOOKS:

*A Guide to Raising Llamas - Care, Showing, Breeding, Packing, Profiting* by Gale Birutta, 1997

*Tricks of the Trail, A Guide to Modern Backpacking* by R. J. Santora

*The Waldo Chronicles - A Training Log* by Gwen Ingram

*Evaluating a Llama Pack* by Gwen Ingram

## CHILDREN'S BOOKS:

*How Llama Saved the Day (A Story From Peru)* retold by Janet Palazzo-Craig

*The library is being used steadily by new RMLA members. Please remember to get your items back on time. Please contact me if you see any items you feel are appropriate for adding to the library.*

*Many thanks to Laurie Mattke and Stanton Lacher for their generous donations to the library.*



Sharon Herbold with a good friend.

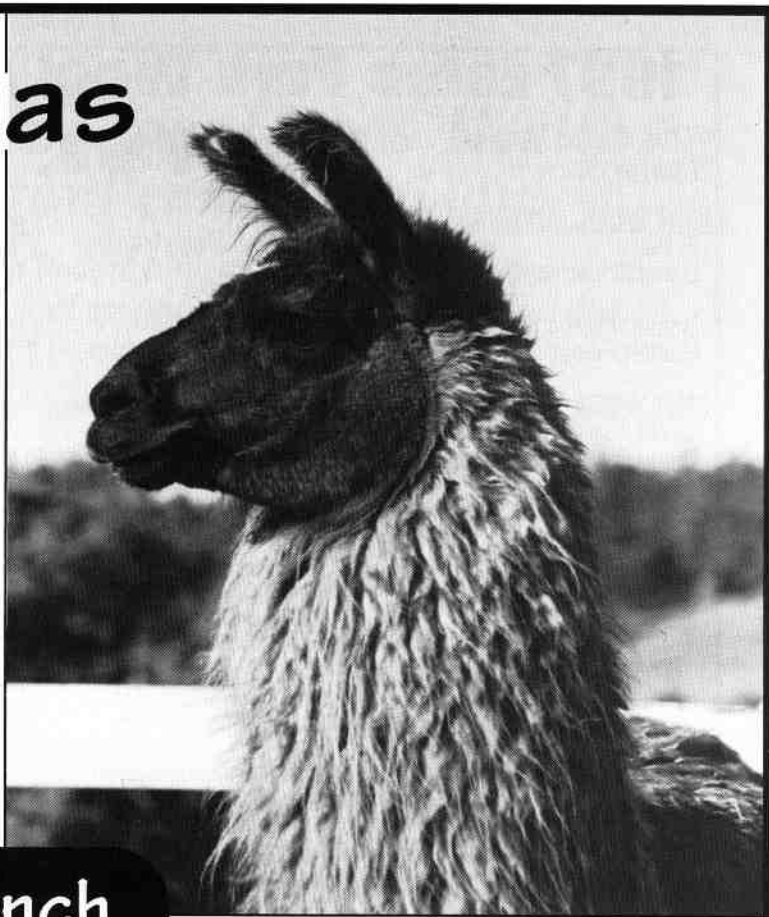
# We Llamas

Proven females bred to Peruvian Picacho.

**\$1,900**

Some will be sold with babies at their side. This is a 3 in 1 package.

We purchased Peruvian Picacho in the fall of 1993. Picacho is a large, heavy boned stud with heavy wool. He has a gentle and kind disposition. His offspring are all an improvement over their domestic dams and have his heavy bone and top conformation.



## Boulder Ridge Ranch

4-H and Pet Quality Male



## Special Offer \$300

Young males suitable for 4-H or pets. Recently we acquired a small herd of pet quality young males. We would like to share the joys of owning llamas with folks that are only interested in the companionship of llamas.

Call Bob or Jo Riley for ranch brochure and pictures of your next llama.

**800•255•0357**

Post Office Box 1189 • Lyons, CO 80540

[www.llama.org/riley](http://www.llama.org/riley)

# 1997 Estes Park Wool Market Llama Show

## Estes Park, Colorado

*This is the largest  
Llama Show!!*

### LIGHT WOOL JUVENILE MALES (2)

- |  |  |
|--|--|
| 1 El Pisco<br>D and C Llamas LLC               | Carol Lontine & Doug Harding<br>Golden, CO |
| 2 Golden Fleece Bandit<br>Golden Fleece Llamas | Russ & Shelly Miller<br>Pine, CO           |

### LIGHT WOOL YEARLING MALES (5)

- |   |                                    |
|---|------------------------------------|
| 1 Cloud Peak's Top Banana<br>Cloud Peak Llamas      | Barbara Coffman-Flinn<br>Story, WY |
| 2 PVLR Tabernash's Pisco Moon<br>Plum Valley Llamas | Lougene Baird<br>Sedalia, CO       |
| 3 Rainbow Valley's Salsa<br>Rainbow Valley Llamas   | Reid Langerman<br>Placitas, MM     |

### LIGHT WOOL TWO YEAR OLD MALES (5)

- |  |  |
|--|--|
| 1. PFW Domino Sprit<br>Pikes Peak Woolies          | Harold & Sharon Herbold<br>Colo. Springs, CO |
| 2 Rainbow's Llyon King<br>Dickman's Rainbow Llamas | Monte & Leslie Dickman<br>Thedford, NE       |
| 3 PPW Cappuccino<br>Pikes Peak Woolies             | Harold & Sharon Herbold<br>Colo. Springs, CO |

### LIGHT WOOL ADULT MALES (10)

- |   |                                       |
|---|---------------------------------------|
| 1 Mignon Hondo<br>Salida del Sol Llamas     | Jerry & Sharon Mitchell<br>Tuttle, OK |
| 2 Tiny Tim Too<br>Cloud Peak Llamas         | Barbara Coffman-Flinn<br>Story, WY    |
| 3 PVLR Tabernash's Denargo<br>Coleman Ranch | Laura Coleman<br>Peyton, CO           |

**Grand Champion**  
Mignon Hondo

**Reserve Champion**  
Tiny TimToo

### LIGHT WOOL JUVENILE FEMALES (7)

- |  |  |
|--|--|
| 1 PVLR Tabernash's Lollapalooza<br>Plum Valley Llamas    | Lougene Baird<br>Sedalia, CO           |
| 2 Polar's Absolute Magnitude<br>Dickman's Rainbow Llamas | Monte & Leslie Dickman<br>Thedford, NE |
| 3 HLR Capucino<br>Harding Llama Ranch                    | Cliff Harding<br>Hotchkiss, CO         |

### LIGHT WOOL YEARLING FEMALES (4)

- |   |                                    |
|---|------------------------------------|
| 1 Cloud Peak Cecilia<br>Cloud Peak Llamas           | Barbara Coffman-Flinn<br>Story, WY |
| 2 Golden Fleece Sienna Star<br>Golden Fleece Llamas | Russ & Shelly Miller<br>Pine, CO   |
| 3 Twin Peak's Sarabi<br>Twin Peak's Llama Farm      | Bart Anderson<br>Platteville, CO   |

### LIGHT WOOL TWO YEAR OLD FEMALES (1)

- |   |  |
|---|--|
| 1 Bardo's Maya Angelou<br>Diamond Oaks Llamas | Donley & Dolores Gardner<br>Daingerfield, TX |
|---|--|

### LIGHT WOOL ADULT FEMALES (1)

- |   |                                   |
|---|-----------------------------------|
| 1 Kahura Uyu Besseya<br>Bitter Creek Llamas | Kim & Dick Murphy<br>Muenster, TX |
|---|-----------------------------------|

**Grand Champion**  
Cloud Peaks Cecilia

**Reserve Champion**  
PVLR Tabernash's Lollapalooza

### MEDIUM WOOL JUVENILE MALES (9)

- |   |                                    |
|---|------------------------------------|
| 1 FFF Happy<br>Feathers & Friends Farm      | Bon & Cindy Burgess<br>Lubbock, TX |
| 2 Solomon's Legend<br>Lincoln's Llama Lland | Don Lincoln<br>Ruidoso, NM         |
| 3 Indian Paint<br>Wildflower Ridge Llamas   | Gregg Romens<br>Colo. Springs, CO  |

### MEDIUM WOOL YEARLING MALES (19)

- |  |  |
|--|--|
| 1 Kodiak's Confetti<br>Kiowa Creek Llamas  | Shenv & Bill Adamcyk<br>Kiowa, CO          |
| 2 DeColores Levi<br>DeColores Llama Ranch  | Kent Douglas & Meg Cattell<br>Loveland, CO |
| 3 DLR Krimson Kodiak<br>Diamond Link Ranch | John & Jane Stout<br>Glade Park, CO        |

### MEDIUM WOOL TWO YEAR OLD MALES (11)

- |   |  |
|---|--|
| 1 Andean Skye<br>Gentle Day Farm                            | Marla & Jim Miles<br>Franktown, CO           |
| 2 Paloalto<br>Pikes Peak Woolies                            | Harold & Sharon Herbold<br>Colo. Springs, CO |
| 3 Triple Chocolate Treat Sundae<br>Ears to You! Llama Ranch | Tom & Faye Tsakopoulos<br>Colo. Springs, CO  |

### MEDIUM WOOL ADULT MALES (16)

- |  |   |
|--|---|
| 1 Showbiz<br>Escarpment Llamas               | Roger & Betty Miller<br>Colo. Springs, CO |
| 2 John Paul Too<br>P/M Llamas                | Maury & Pat Cox<br>LaSalle, CO            |
| 3 Serenity Lane Amigo<br>Dusty Plains Llamas | Diane & Rick Jarvis<br>Phillipsbug, KS    |

**Grand Champion**  
Andean Skye

**Reserve Champion**  
Showbiz



# Cache La Poudre



## Insure Your Lamas' Health for Pennies per Day!

Cache La Poudre Minerals are free choice supplements formulated specifically to balance your llamas' diet. Includes these essential elements:

### MINERALS

Call Now to Order  
or receive a brochure:

**800-758-0825**  
970-493-2335

- ★ **Selenium**—recommended amount for selenium deficient areas
- ★ **Vitamin D3**—necessary for bone growth and tooth structure
- ★ **Zinc**—for immune function and healthy skin and fiber
- ★ **Vitamin E**—for selenium absorption, fights stress and disease

**ECONOMICAL! Costs less to feed per day than other free choice minerals *or pellets* with comparable guaranteed analysis.**

#### Supplement #1:

Diet: Late or non-irrigated summer, fall, or winter pastures; feeding grass hay. Contains a 2:1 calcium/phosphorus ratio and additional Vitamin E.

25 lbs, \$29    50 lbs, \$55

#### Supplement #2:

Diet: Late or non-irrigated summer, fall, or winter pastures; feeding alfalfa or a grass hay low in phosphorus. Contains additional phosphorus and Vitamin E.

25 lbs, \$29    50 lbs, \$55

#### Supplement #3:

Diet: Spring or irrigated pastures; feeding alfalfa or a grass hay low in phosphorus. Contains additional phosphorus and recommended basic level of Vitamin E.

25 lbs, \$24    50 lbs, \$45

**NEW 200 lb. PRICE: #1 or #2: \$198, #3: \$162 • PLUS SHIPPING**

*Estes Park Wool Market Llama Show, Cont.*

#### MEDIUM WOOL JUVENILE FEMALES (23)

- |  |                                  |
|--|----------------------------------|
| 1 SSLR Jemima Brown<br>Shining Star Ranch  | Rick Steadham<br>Las Vegas, NM   |
| 2 FFF PC's Kiss<br>Feathers & Friends Farm | Bon&Cindy Burgess<br>Lubbock, TX |
| 3 Bardo's Choice<br>Flying "U" Ranch       | Brenda Foster<br>Clearmont, WY   |

#### MEDIUM WOOL YEARLING FEMALES (24)

- |   |                                |
|---|--------------------------------|
| 1 Ms Sock Hop<br>Winding Trails Llamas            | Jan Redenbarger<br>Golden, CO  |
| 2 PVLH Holiday Spirit<br>Plum Valley Llamas       | Lougene Baird<br>Sedalia, CO   |
| 3 Bardo's Leslie Marmon Sitko<br>Flying "U" Ranch | Brenda Foster<br>Clearmont, WY |

#### MEDIUM WOOL TWO YEAR OLD FEMALES (8)

- |                                 |  |
|---------------------------------|--|
| 1 NRW Rana<br>Needle Rock Wools | Terry Mowbray<br>Crawford, CO                |
| 2 Treeyst<br>Pikes Peak Woolies | Harold & Sharon Herbold<br>Colo. Springs, CO |
| 3 Mustang Sally<br>Llamarage    | MaryBeth & Joe Hartsough<br>Platteville, CO  |

#### MEDIUM WOOL ADULT FEMALES (3)

- |   |                                      |
|---|--------------------------------------|
| 1 Rocky Mountain Marimba<br>Rocky Mountain Llamas | Bobra Goldsmith<br>Longmont, CO      |
| 2 Wind River's Sally Ride<br>Bucking Fish Farm    | Bret Nye & DJ Browne<br>Bellvue, CO  |
| 3 Annobon<br>Dusty Llamas                         | Kathy & Steve London<br>Longmont, CO |

**Grand Champion**  
NRW Rana

**Reserve Champion**  
Ms Sock Hop

#### HEAVY WOOL JUVENILE MALES (30)

- |  |  |
|--|--|
| 1 Sharp's Enchanter<br>Sharp Llamas      | Doug & Jamie Sharp<br>Pagosa Springs, CO     |
| 2 Coup d'Etat<br>Llamarage               | Mary Beth & Joe Hartsough<br>Platteville, CO |
| 3 Cat Burglar<br>Feathers & Friends Farm | Bon & Cindy Burgess<br>Lubbock, TX           |

#### HEAVY WOOL YEARLING MALES (32)

- |                                       |                                    |
|---------------------------------------|------------------------------------|
| 1 DDL Mr. Sweets<br>Lla-mirage Llamas | Bob & Monte Houseman<br>Divide, CO |
|---------------------------------------|------------------------------------|

# Gift Certificates for TTEAM Training for Llamas, Alpacas and Humans with Dale Pettigrew

Certificates for a one-day clinic or two hours of individual instruction.

\$60.00

*A GREAT GIFT FOR* new lama owners · lama-owners-to-be · 4-Hers · your veterinarian · lama friends who haven't tried TTEAM · lama friends who have tried TTEAM and want more · your spouse · yourself · your llamas · your alpacas

TTEAM is fun and effective. Guaranteed to improve your relationship with your llamas. Learn safe, non-forceful, effective techniques to teach your lama to halter, lead, load, pick up feet, pack, be groomed or medicated without restraint.

**Give one with every purchase of your animals.**

Contact Dale Pettigrew, 970•493•2335  
Overland Trail Llamas, 168 Emerald Mtn. Ct., Livermore, CO 80536

*Estes Park Wool Market Llama Show, Cont.*

- |  |  |
|--|--|
| 2 SSLR Black Storm<br>Shining Star Ranch | Rick Steadham<br>Las Vegas, NM           |
| 3 Sharp's Super Star<br>Sharp Llamas     | Doug & Jamie Sharp<br>Pagosa Springs, CO |

## HEAVY WOOL TWO YEAR OLD MALES (10)

- |   |                                      |
|---|--------------------------------------|
| 1 Dixie's Wild Rebel<br>Puesta del Sol Llamas | Gary & Shawn Norman<br>Tuttle, OK    |
| 2 Cadfael<br>Pheasant Hill Farm               | John & Sharon Beacham<br>Boulder, CO |
| 3 PLR Jazzmatazz<br>Price Llama Ranch         | Terry & Kathy Price<br>Durango, CO   |

## HEAVY WOOL ADULT MALES (17)

- |  |                                       |
|--|---------------------------------------|
| 1 FHL The Standard<br>C & M Llamas         | Cathy Wittrup<br>Falcon, CO           |
| 2 East Fork Narcissus<br>Stage Stop Llamas | Sally German-Rucker<br>Florissant, CO |
| 3 HBL Gulliver<br>Shepherd's Choice Llamas | Ken & Lucy Rogers<br>Divide, CO       |

**Grand Champion**  
DOL Mr. Sweets

**Reserve Champion**  
Dixie's Wild Rebel

## HEAVY WOOL JUVENILE FEMALES (30)

- |  |   |
|--|---|
| 1 Bardo's Summer Splendor<br>Bitter Creek Llamas | Kim & Dick Murphy<br>Muenster, TX           |
| 2 Cricket's Tinkerbelle<br>Lia-mirage Llamas     | Kim & Dick Murphy<br>Divide, CO             |
| 3 Llamarage's Charlotte<br>Llamarage             | Mary Beth & Joe Hartsough<br>Platteville CO |

## HEAVY WOOL YEARLING FEMALES (25)

- |   |  |
|---|--|
| 1 Hip Hop<br>Shining Star Ranch                           | Rick Steadham<br>Las Vegas, NM                 |
| 2 Zydeco's Angel in My Pocket<br>Heaven View Ranch        | Mark & Brenda Horst<br>Divide, CO              |
| 3 Touch the Earth Rosie Marlice<br>Touch the Earth Llamas | Van Zandt & Michael Shealy<br>Black Forest, CO |

## HEAVY WOOL TWO YEAR OLD FEMALES (8)

- |  |  |
|--|--|
| 1 Miss Lemon<br>Zia Llama Co                   | Sarah Moody & Kathy Walker<br>Santa Fe, NM |
| 2 PHF Picacho's Meringue<br>Pheasant Hill Farm | John & Sharon Beacham<br>Boulder, CO       |
| 3 Kinobi WCF<br>Shepherd's Choice Llamas       | Ken & Lucy Rogers<br>Divide, CO            |

## HEAVY WOOL ADULT FEMALES (4)

- |  |  |
|--|--|
| 1 Wind River's Narcissa<br>Bo-Jac Llamas | Bob & Jaci Aue<br>Mitchell, NE           |
| 2 GNLC Kinsey Milhorne<br>Sharp Llamas   | Doug & Jamie Sharp<br>Pagosa Springs, CO |
| 3 FHL Alabama!<br>Carollama Farms        | Carol Ann Tallmon<br>Florissant, CO      |

**Grand Champion**  
Hip Hop

**Reserve Champion**  
Bardo's Summer Splendor

## ADVANCED OBSTACLE (11)

- |  |                                    |
|--|------------------------------------|
| 1 Senior Bandalero<br>Cloud Peak Llamas          | Barbara Coffman-Flinn<br>Story, WY |
| 2 Rocky Mountain Bounce<br>Rocky Mountain Llamas | Bobra Goldsmith<br>Longmont, CO    |
| 3 Nicolo<br>Shining Star Ranch                   | Rick Steadham<br>Las Vegas, NM     |

## NOVICE OBSTACLE (44)

- |  |                               |
|--|-------------------------------|
| 1 The Great Mr. Mutombo<br>Grand Slam Llamas | Sue Grimm<br>Georgetown, CO   |
| 2 CL Irazu<br>Winding Trails Llamas          | Jan Redenbarger<br>Golden, CO |
| 3 CR Smokey Joe                              | Dixie Minear<br>Hotchkiss, CO |

**INTERMEDIATE YOUTH OBSTACLE (19)**

- |  |                               |
|--|-------------------------------|
| 1 Shadrack's Fiero<br>Rocky Canyon Ranch | Spring Lillie<br>Lyons, CO    |
| 2 Tiny Tim Too<br>Cloud Peak Llamas      | Tiffany Colman<br>Story, WY   |
| 3 Mister Sampson<br>Dusty Plains Llamas  | Matt Jarvis<br>Philliburg, KS |

**JUNIOR YOUTH OBSTACLE (29)**

- |  |                                  |
|--|----------------------------------|
| 1 CL Irazu<br>Winding Trails Llamas      | Ty Redenbarger<br>Golden, CO     |
| 2 Shadrack's Fiero<br>Rocky Canyon Ranch | Brittany Lillie<br>Lyons, CO     |
| 3 Barbarosa<br>Dusty Britches Ranch      | Levi Kauffman<br>Castle Rock, CO |

**SUB-JUNIOR YOUTH OBSTACLE (8)**

- |  |                                |
|--|--------------------------------|
| 1 CL Irazu<br>Winding Trails Llamas                | Jill Redenbarger<br>Golden, CO |
| 2 Ivory Pond's Black Jack<br>Stage Stop Llamas     | Robert Owen<br>Florissant, CO  |
| 3 Rainbow Butterscotch<br>Dickman's Rainbow Llamas | Kelcee Dickman<br>Thedford, NE |

**ADVANCED PUBLIC RELATIONS (7)**

- |  |  |
|--|--|
| 1 Rocky Mountain Bounce<br>Rocky Mountain Llamas | Bobra Goldsmith<br>Longmont, CO              |
| 2 Kahura Uyu Rhamnus<br>Diamond Oaks Llamas      | Donley & Dolores Gardner<br>Daingerfield, TX |
| 3 Nicolo<br>Shining Star Ranch                   | Rick Steadham<br>Las Vegas, NM               |

**NOVICE PUBLIC RELATIONS (21)**

- |   |                                     |
|---|-------------------------------------|
| 1 Sunset Cadet<br>Twin Peaks Llama Farm         | Bart Anderson<br>Platteville, CO    |
| 2 GLL Java<br>Llamarage & Winding Trails Llamas | Hartsough/Redenbarger<br>Golden, CO |
| 3 Cloud Peak's Top Banana<br>Cloud Peak Llamas  | Barbara Coffman-Flinn<br>Story, WY  |

**INTERMEDIATE YOUTH PUBLIC RELATIONS (13)**

- |   |  |
|---|--|
| 1 PPW Domino Spirit<br>Pikes Peak Woolies | Adrienne Bergenfeld<br>Colo. Springs, CO |
| 2 PPW Cosmo<br>Dancing Pines Ranch        | Alissa Veuthey<br>Colo. Springs, CO      |
| 3 Mister Sampson<br>Dusty Plains Llamas   | Matt Jarvis<br>Phillipsburg, KS          |

**JUNIOR YOUTH PUBLIC RELATIONS (19)**

- |                                     |                                  |
|-------------------------------------|----------------------------------|
| 1 Barbarosa<br>Dusty Britches Ranch | Levi Kauffman<br>Castle Rock, CO |
| 2 CL Irazu<br>Winding Trails Llamas | Ty Redenbarger<br>Golden, CO     |

- |                                       |                             |
|---------------------------------------|-----------------------------|
| 3 Bardo's Dante<br>Plum Valley Llamas | Deidre Baird<br>Sedalia, CO |
|---------------------------------------|-----------------------------|

**TWO YEAR OLD NON-BREEDER (2)**

- |                               |  |
|-------------------------------|--|
| 1 Tobasco Red<br>Sharp Llamas | Doug & Jamie Sharp<br>Pagosa Springs, CO     |
| 2 Sock<br>Tall Tail Ranch     | Robert & Jill Knuckles<br>Grand Junction, CO |

**ADULT NON-BREEDIER (7)**

- |   |                                 |
|---|---------------------------------|
| 1 Red Feather                           | Debby Rothwell<br>Denver, CO    |
| 2 Mister Sampson<br>Dusty Plains Llamas | Matt Jarvis<br>Phillipsburg, KS |
| 3 Cochise<br>Debby Rothwell             | Debby Rothwell<br>Denver, CO    |

**Grand Champion**  
Red Feather

**Reserve Champion**  
Tobasco Red

**PRODUCE OF DAM (9)**

- |  |  |
|--|--|
| 1 Andian Star<br>Sharp Llamas                    | Doug & Jamie Sharp<br>Pagosa Springs, CO |
| 2 East Fork Pacifica<br>Shepherd's Choice Llamas | Ken & Lucy Rogers<br>Divide, CO          |
| 3 Sharp's Enchante<br>Sharp Llamas               | Doug & Jamie Sharp<br>Pagosa Springs, CO |

**GET OF SIRE (10)**

- |  |  |
|--|--|
| 1 HBL Gulliver<br>Shepherd's Choice Llamas     | Ken & Lucy Rogers<br>Divide, CO              |
| 2 Juan's Majestic Array<br>Bo-Jac LI "Aue" mas | Bob & Jaci Aue<br>Mitchell, NE               |
| 3 GLL Java<br>Llamarage                        | Mary Beth & Joe Hartsough<br>Platteville, CO |

**SUB-JUNIOR YOUTH SHOWMANSHIP (8)**

- |  |                                |
|--|--------------------------------|
| 1 Ivory's Pond's Black Jack<br>Stage Stop Llamas   | Robert Owen<br>Florissant, CO  |
| 2 Rainbow Butterscotch<br>Dickman's Rainbow Llamas | Kelcee Dickman<br>Thedford, NE |
| 3 Choco Caliente<br>Red Tail Ridge Ranch           | Ashley Fillmore<br>Elbert, CO  |

**JUNIOR YOUTH SHOWMANSHIP (27)**

- |  |                                    |
|--|------------------------------------|
| 1 Brianna's Bandito<br>Llamarado                       | Brianna Livengood<br>Westcliff, CO |
| 2 PVL R Tabernash's Lollapalcoza<br>Plum Valley Llamas | Deidre Baird<br>Sedalia, CO        |
| 3 SSLR Black Storm<br>Shining Star Ranch               | Kimberly Steadham<br>Las Vegas, NM |

*Estes Park Wool Market Llama Show, Cont.*

**INTERMEDIATE YOUTH SHOWMANSHIP (13)**

- |  |                                |
|--|--------------------------------|
| 1 Sun Beam's Thunder<br>Stage Stop Llamas  | Cynthia Owen<br>Florissant, CO |
| 2 Kahura Uyu Windom<br>Coleman Ranch       | Laura Colenaan<br>Peyton, CO   |
| 3 East Fork Narcissus<br>Stage Stop Llamas | Katie German<br>Florissant, CO |

**ADVANCED PACK (5)**

- |  |                                     |
|--|-------------------------------------|
| 1 Nicolo<br>Shining Star Ranch                   | Rick Steadham<br>Las Vegas, NM      |
| 2 Rocky Mountain Bounce<br>Rocky Mountain Llamas | Bobra Goldsmith<br>Longmont, CO     |
| 3 TTE Snickerdoodle<br>Dancing Pines Ranch       | Robert Veuthey<br>Colo. Springs, CO |

**NOVICE PACK (12)**

- |   |  |
|---|--|
| 1 Sunset Cadet<br>Twin Peaks Llama Farm     | Bart Anderson<br>Platteville, CO           |
| 2 Rocky Mountain's Niwot<br>Bear Track Farm | Jerry Dunn<br>Golden, CO                   |
| 3 Qualizza's Bisbe                          | Herman & Ellie Polich<br>Colo. Springs, CO |

**YOUNG PACK (9)**

- |   |  |
|---|--|
| 1 PVLR Holiday Spirit<br>Plum Valley Llamas   | Lougene Baird<br>Sedalia, CO                 |
| 2 Paloalto<br>Pikes Peak Woolies              | Harold & Sharon Herbold<br>Colo. Springs, CO |
| 3 Bardo's Omar Khayyam -<br>Cloud Peak Llamas | Barbara Coffman-Flinn<br>Story, WY           |

**INTERMEDIATE YOUTH PACK (9)**

- |                                       |                                   |
|---------------------------------------|-----------------------------------|
| 1 Tiny Tim Too<br>Cloud Peak Llamas   | Tiffany Coffman<br>Story, WY      |
| 2 Blanco Bart<br>Dusty Britches Ranch | Heidi Kauffman<br>Castle Rock, CO |
| 3 Dr. Hobbes<br>Bear Track Farm       | Gabi vonRoedern<br>Golden, CO     |

**JUNIOR YOUTH PACK (7)**

- |  |                                     |
|--|-------------------------------------|
| 1 Barbarosa<br>Dusty Britches Ranch        | Levi Kauffman<br>Castle Rock, CO    |
| 2 Cloud Peak's Cecila<br>Cloud Peak Llamas | Halley Coffman<br>Story, WY         |
| 3 Sunset Cadet<br>Twin Peaks Llama Farm    | Matthew Anderson<br>Platteville, CO |

**PACK STRING (4)**

- |   |                                    |
|---|------------------------------------|
| 1 Senior Bandalero<br>Cloud Peak Llamas | Barbara Coffman-Flinn<br>Story, WY |
| 2 Rocky Llamas<br>Wind's Teeth          | Melanie Rojko<br>Fairplay, CO      |

- |   |                          |
|---|--------------------------|
| 3 Rocky Mountain's Niwot<br>Bear Track Farm | Jerry Dunn<br>Golden, CO |
|---|--------------------------|

**Junior Youth Grand Champion Performance**  
Levi Kauffman

**Junior Youth Reserve Grand Champion Performance**  
Halley Coffman

**Intermediate Youth Grand Champion Performance**  
Tiffany Coffman

**Intermediate Youth Reserve Grand Champion Performance**  
Matt Jarvis

**Grand Champion Performance**  
Rocky Mountain Bounce: Bobra Goldsmith

**Reserve Grand Champion Performance**  
Nicolo: Rick Steadham

**Grand Champion Novice Performance**  
Sunset Cadet: Bart Anderson

**Reserve Grand Champion Novice Performance**  
Qualizza's Bisbe: Herman & Ellie Polich





# Llama & Alpaca Fleece Processing Workshop

**FIBER FOLKS  
CHECK THIS OUT!**

In conjunction with the Taos Wool Festival, held in Taos, New Mexico, Mike Brown will conduct a **FREE WORKSHOP** held at the Taos Valley Wool Mill covering all aspects of llama and alpaca fleece processing from the handspinning level up to the industrial level. The workshop will begin at 10AM on Sunday, September, 28th, and it will last about two hours.

The workshop is a must for ranchers interested in knowing what a handspinner wants (and doesn't want) in a fleece Mike will take folks step-by-step through the handspinning process from raw fleece to yarn. Because the workshop will be at the mill, Mike will fire up all the big machines and show you what happens in a big wool mill to turn your raw fleece into roving or yarn. Fun! You will learn what a mill can and cannot do, and you will know what questions to ask when shopping for a mill to process your raw fiber.

If you are a handspinner, then you will want to attend to learn some nifty tricks for handspinning llama and alpaca if you've ever wondered what magic happens inside a wool mill, then come on along!

We will gather at the Taos Valley Wool Mill booth at Kit Carson Park in Taos, New Mexico, at 9:30AM sharp to set up a car pool. Because of the nature of the mill, we ask that small children not be brought along.

For further information contact Mike at (505)758-9631.

**BE THERE!**

3709 W. Cty Rd. 50  
Fort Collins, CO 80521

Michael & Robbie Guidry  
(970) 482-0350

**Cottonwood Farm Alpacas**

Sales  
Breeding

Fiber  
Boarding

alpacas@frii.com

Mountain Lions are commonly known as cougars, panther or pumas. Their population is estimated to be 1,500 to 3,000 in Colorado. Their tracks are generally in the form of an unhurried walk. Lions place their hind paw directly behind their front paw when walking. Their claws marks are usually not visible because they are retracted. Generally they are solitary animals. Adult males always travel alone. When there are two or more lions traveling together, it is usually a mother with her kittens.

Coyote tracks are very similar to dog tracks. Front tracks are larger than the rear. Front tracks are 2-3 inches long and 2 inches wide. Rear tracks are 2 inches long and 1 1/2 inches wide.

The coyote's howl, backs and yips are used to bring individuals together or to let other coyotes know their location.

In Colorado, coyotes are classified as a game species and may be taken year-around with either small game or furbearer license. Land-owners may kill coyotes, without a license on their land if they threaten their property or livestock.

**SL** **Serenity Lane**  
**LLAMAS & ALPACAS**  
Sales Breeding  
Boarding

Since 1984

719-687-1224

Bill & Donna Brown .15293 W. Hwy. 24 Woodland Park, CO 80863

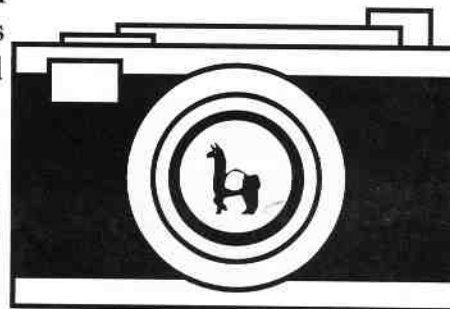
# **LLAMA PHOTO CONTEST**

at the 1998 National Western Stock Show

By Ken Gaunt • 3187 S. Ulster St. • Denver, CO 80231 • (303)337-5332

A Photo Contest of Llama pictures to run during the Llama Show of the Llama Division of the National Western Stock Show. The entries will be received by the Llama Photo Contest Director and will be displayed in the area of the Llama stalls. Ribbons of the National Western Stock Show to be awarded by a jury of three judges selected by the Photo Director. Cash prizes will be awarded to the first three places only. Cash award will be \$30, \$20, and \$10.

If the first year is at all successful an attempt may be made to define different classes of photos, such as: Taken by youngsters, animals, activities, alpacas, etc.



1. Contest is open to all amateur photographers, they do not have to own the animal pictured. Each photo must include a llama or llamas. Entries are limited to three entries per person.
2. Entries must be received by noon the first day of llama show. Entries should be mailed to Director of Llama Photo Contest. (Ken Gaunt, 3187 S. Ulster St., Denver, CO 80231 (303)337-5332)
3. We will accept mounted or framed prints only (no slides) in sizes 5 x 7 and larger. All prints must be labeled with name, and address on the back. Entries may be titled, and mounted or framed as the photographer desires. Suggested mounting is photo corners or fastened to suitable size poster board.
4. By entering this contest, you represent that your photos are original. The first year we will accept photos taken at any time prior to the show. In subsequent shows the entry will be required to have been taken during the calendar year prior to the show.
5. The photographer should have, or be able to obtain all necessary rights, including any model (people) releases. The Llama Contest WILL NOT sell any prints or rights to a publisher, but will refer any prospective buyer to the photographer.
6. The prize winning pictures will remain on display through-out the Stock Show.
7. Each individual may enter three prints, mounted or framed.
8. Contest Director will make every effort to protect your photos, from vandalism or theft, but assumes no responsibility for any entry.
9. There will be a ballot for viewers to mark for public's choice.

## We were hooked!

By Judie Chitwood and Julie Heggis • Double J Llamas • P.O. Box 612 • Laramie, WY • 82070 • (307)721-2919

About a year ago we noticed three llamas and one alpaca in a field we drive by regularly here in Laramie. Julie knew the woman who owns them, Lynn Shuler, so naturally we stopped and talked to her about them, fed them some 'rabbit' food and we were hooked. We made a few phone calls and a trip to Ft. Collins, Colorado to question owner Carol Ballew. We went with the intention of buying two males, but came home with our first two females. After successfully haltering one, but not the other, we introduced ourselves to Dale Pettigrew, TTEAM practitioner. We attended a TTEAM clinic with Marty McGee in September and by October, bought six llamas from Dale to make our own herd!

We joined RMLA to get as much information as we could find about our new found friends, everything from feeding to caring for newborn crias. I found some information on the Internet, but a lot of it contradicted what I'd already read or been told! So, having a library and network of other new and veteran owners available was very appealing and we look forward to attending workshops, conferences and shows in the future.

Julie has a funeral home and is the county coroner and I'm a probation/parole officer, so as you can imagine, our lives seem to be sometimes out of control. The llamas have brought about a sense of serenity and sanity in an otherwise chaotic world.

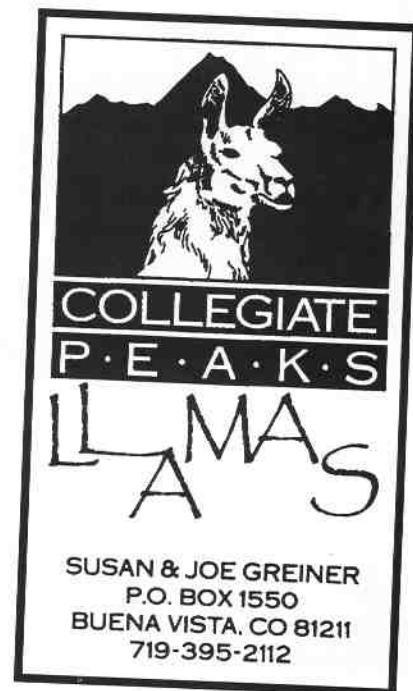
I've become interested in spinning and weaving, have a wheel and a loom, but have a long way to go to becoming proficient at either! We'll shear in early June, so I'll have plenty of wool to practice with next winter.

We're planning on beginning pack lessons this spring (if it ever gets here!) with two of our young males. We have mountains at our back door for hikes.

Two crias have arrived within the last month, another is due the end of May and we're excited about increasing our herd and learning more about these wonderful creatures. They never cease to amaze us and amuse us and the llama people we've met have all been very helpful. We'd like to thank them all for their advise, for their coming to the rescue in crisis, large and small, and for their expertise. Thank you.

Judie Chitwood  
Julie Heggie  
Owners - Double J Llamas

Barbara Hance (Journal staff) wrote letters to new members and invited them to 'tell their story' as to how and why they joined RMLA. This letter is another response to that invitation.



Let us resolve to be the masters, not the victims, of our history, controlling our own destiny without giving way to blind suspicion and emotion.

*John F. Kennedy at University of Maine, Oct. 19, 1963*

# FIRE AND FLOOD ALERT!

By Jerry Dunn and Fran Etzkorn - retired assistant fire chief for the High Country volunteer fire department, based in Gilpin County.

---

This summer, in Colorado, the front range fire danger was at the extreme level for nearly two months, and now most recently, the threat of floods. Do you have a plan to evacuate you and your animals? Is the plan written down? Have you written down those people to help you in an emergency?

Included in this notice are suggested guidelines to help you get organized for just such an event. Modify it for your situation. Let me know if you have additional suggestions or need help getting organized.

## IN THE BEGINNING:

- 1- Always park your vehicle facing out in your driveway or in front of your trailer ready to hitch up.
- 2- Teach all of your animals to load into trailers and to lead if possible.
- 3- Practice hitching your trailer to your vehicle.
- 4- Practice backing your trailer into the proposed loading area.
- 5- Provide barnyard lighting with a back up in case there is no electricity.
- 6- Determine a safe staging area for evacuation with extra stall panels.
- 7- Have on hand several orange construction cones to mark off driving lanes for your rescuers.
- 8- Surveyors tape to mark your driveway or pickup point.
- 9- Get to know your volunteer fire department - show up at work parties and introduce them to llamas. Give the fire chief a copy of your evacuation plan. Ask for suggestions.
- 10- Orange hunters' vests with Llama Rescue printed on them with magic marker.
- 11- Decide which animals are to be evacuated first. You may only get one chance! Remember the family house pets.
- 12- Household pets need I.D. collars and leashes and travel crates. They need to be transported in crates to avoid injury. Practice crating them.
- 13- What is your plan for your animals if it is too late to transport them to a safe area?
- 14- Document your herd with photographs.

## YOUR PLAN:

- 1- Involve another reliable person, neighbor or close friend in your plan. With one phone call that person can set your plan into action.
- 2- Organize your herd into groups that need to be together, WHO SHOULD GO FIRST. Familiarize your helper with these groups.
- 3- Develop a phone tree of people who hopefully will not be involved in their own rescue. Become familiar with available people in your corridor. Keep it simple so that they can arrive quickly and safely.
- 4- Make a list of how many animals can they transport and safely board.
- 5- Print copies of your phone tree with names, trailer capacity, which llama group (geldings, studs, moms and babies) and give each person in your rescue group a copy.
- 6- Include your vet's phone number with each phone tree member in case of injury or trauma.
- 7- Send the people on your phone tree a copy of your plan with a highlighted map to your place.
- 8- Keep the information on a clip board with extra pens, paper, tape, orange vests and a flashlight in a place that is easy for your helper to find. This list will document "who went where". You might not be home!
- 9- Carefully review your plan with all of the helpers.

## RESCUE PEOPLE:

Be clear about your responsibilities. Practice backing your vehicle and trailer. Have a special back pack in your vehicle which includes the following:

- 1- Drinking water
- 2- Emergency food and snacks



- 3- Flashlights and/or head lamps
- 4- Sturdy footwear (no tennis shoes)
- 5- Hat, leather gloves, warm coat, rain gear, large bandanna
- 6- Shovel
- 7- Extra lead ropes, stake lines, halters
- 8- Surveyors tape

When should you evacuate? Before It's too late! That sounds cynical, but some evacuations have happened when the flames were visible on the next ridge at midnight and another when the smoke was so thick rescuers could only see a few hundred feet. In both situations it was difficult for the rescuers and animals to stay calm. It is better to evacuate early for your safety and for those who are helping. No need to be a hero!

Use these guidelines to best fit your situation, **BUT MAKE A PLAN!** The people in California are just now making their plans!

CALL ME IF YOU NEED HELP.  
 Jerry Dunn (303)277-1129

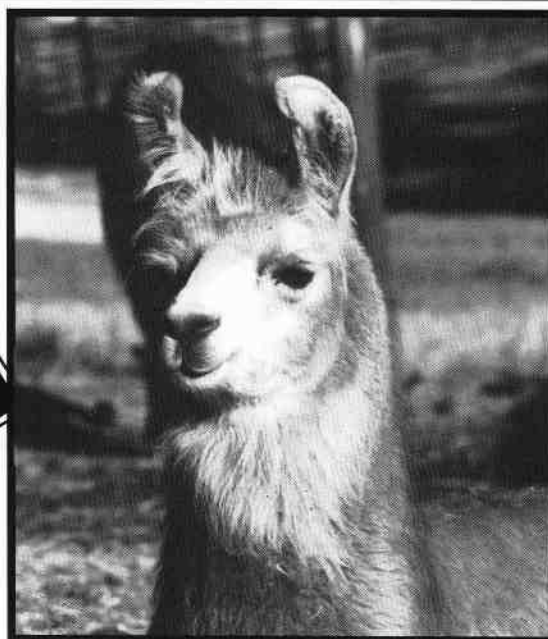
"New means should be found for promoting the free expression and trade of ideas, through travel and communication, and through increased exchanges of people and books and broadcasts. For as the world renounces the competition of weapons, competition in ideas must flourish, and that competition must be as full and as fair as possible."

*John F. Kennedy - United Nations address, September 20, 1963*

**Little Big Man** is one of our Prize Winning offspring of our champion herd sire, **Five-Star**. Our small size gives our llamas the advantage of more hands-



on care. They are all friendly, well-mannered and manageable. We offer a variety of colors, styles and ages. Visit and see for yourself the special qualities in the llamas we have for sale.



Select your llama with confidence. We offer our support long after you take your llama home.

# 1997 RMLA Conference

October 11 & 12, 1997  
Montrose, Colorado

- Activities will begin at 1:00 PM on Saturday, at the Best Western Red Arrow Motor Inn Conference Room.
- Annual Meeting and Dinner will start at 6:30 p.m.
- Sunday Activities will take place at Shor Eisle's Ranch from 9:00 to Noon.

## Topics to Include:

- Care: How do you take care of your Llama or Alpaca? Topics covered will include: hands-on training, nail trimming, grooming, injections, and removing fighting teeth.
- Packing: Basic Packing to Advanced Packing methods by Charlie Hackbarth and Bob Riley. Everything you need to know from picking the right Llama, training, and choosing the equipment.
- Internet: How the RMLA Web pages can help you market your animals. This will be part of the annual report from the Board with a question and answer session after the meeting.
- Fiber: You wanted long wool... now what? Demo of shearing a Llama. See the RMLA Fiber Co-op booth. How can you use this valuable RMLA resource.
- Showing: How to Show Your Llama and Put your best foot forward in the Show Ring. Learn what Judges are looking for from ALSA Judges.

## Preliminary Schedule

**Saturday:** — Motel conference room

- 11:00AM Registration  
1:00 - 3:15 Caring for Llamas and Alpacas  
3:15 - 3:30 — Break  
3:30 - 5:30 Fiber - Getting quality and where is the market now. How do I convert all that fiber I have been breeding for to money?  
6:00 Appetizers and Cocktails (BYOB)  
6:30 — Dinner  
7:30 Annual Meeting with report on the RMLA presence on the Internet  
Following the meeting, there will be a discussion on why RMLA has created a presence for you on the Net and how you may take advantage.

**Sunday:** — Shor Eisle's Ranch from 9:00 to Noon.

- 9:00 - Noon Hands-on Pack Class - Basic to Advanced  
9:00 - 10:30 Shearing a Llama  
10:30- Noon How to Show Your Llama

Cost: Only \$25.00, for Conference: (\$35.00 at the door, registrations received after 9/25/97 or Non-members). Includes Saturday Night Dinner, Seminars, Snacks and Annual Meeting. This is a very low cost event so everyone who attends any part is required to pay the registration fee. Youth 18 or younger accompanied by an adult at full fee will be admitted for \$15.00. Registration deadline: Must be received by September 25, 1997 for lowest cost.

Hotels: Host- Best Western Red Arrow Motor Inn, 1702 E. Main Street (US Hwy 50)

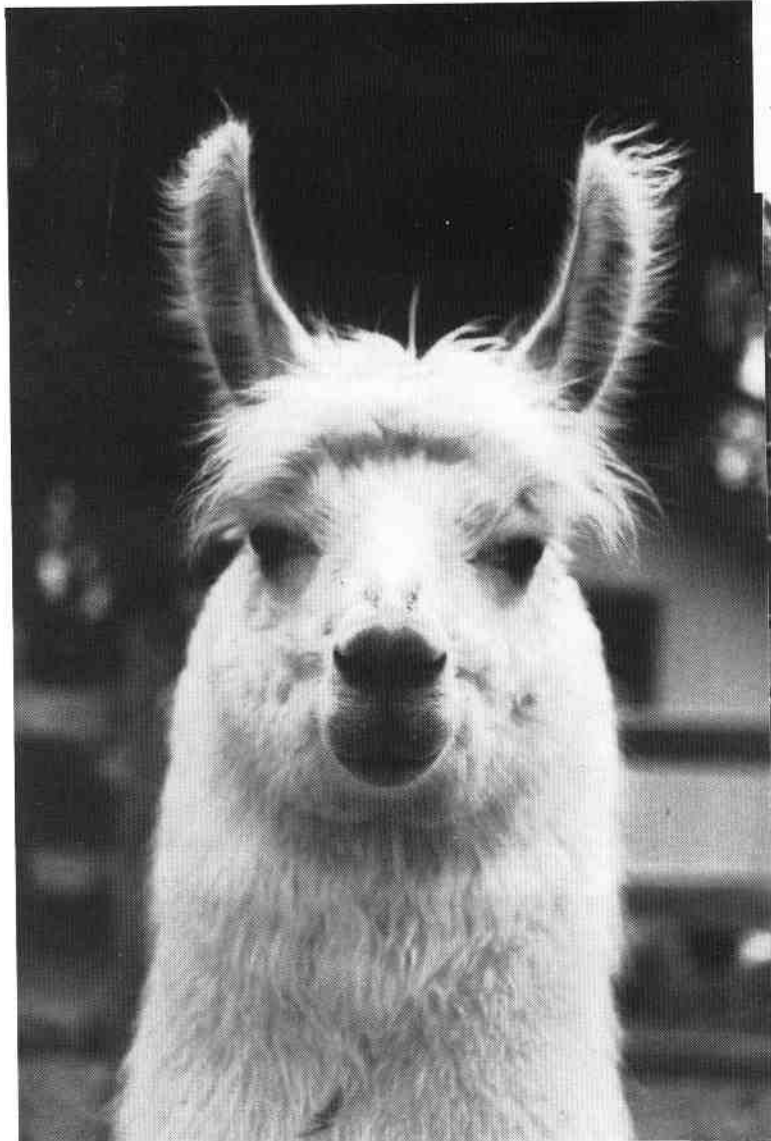
Montrose, Colorado 81402-0236 (800) 468-9323 Room rates for RMLA attendees \$82.00 (AARP \$73.00)

Super 8, 1705 E. Main (across the street from host motel), (970)249-9294 1 person \$34.88, 2 people \$46.88.

Day's Inn, 1665 E. Main, (970)249-3411 1- \$36.88, 2- \$42.88.

**Registration packets will be mailed on September 1st.**

**MCF SNOWY MOUNTAIN MAN  
(CRAZY MOUNTAIN MAN x ROULETTA)  
KIDS!**

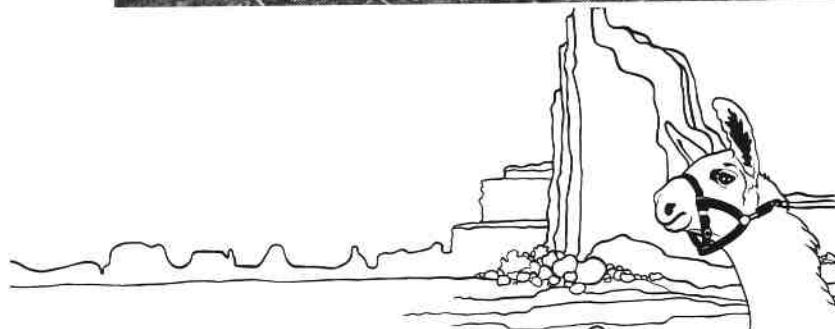


**ZERKEL (Above)  
FOR SALE!  
(Male - 10/25/96)  
1st in class  
Intermountain Llama Classic**

**GRAND VALLEY LLAMAS**  
Judy & Curt Sealy  
593 19-3/4 Road  
Grand Junction, CO 81503  
Phone/Fax (970)241-7921

**YOSEMITE (Below)  
SOLD!**

**THANK YOU & BEST WISHES  
to GRETCHEN KAUFFMAN**



# JELLY BEAN CLASSIC

May 17, 1997 • 10 am to whenever • Arvada Equestrian Center

BRING YOUR LLAMA, A POTLUCK DISH AND PARTICIPATE IN A NEW EVENT.

NO ENTRY FEE

NO JUDGE

NO RIBBONS

NO HALTER CLASS

ONLY PASTURE GROOMED LLAMAS ACCEPTED

RECEIVE A JELLYBEAN FOR EACH OBSTACLE SUCCESSFULLY COMPLETED.

COURSE WILL CONSIST OF 30 OBSTACLES IN THE SKILL AREAS OF OPEN OBSTACLE, PUBLIC RELATIONS, PACKING, AND DRIVING.

TAILGATE POTLUCK TO FOLLOW EVENT

FOR MORE INFORMATION ABOUT THIS FUN TIME, SIGN UP AT REGISTRATION TABLE.

ORGANIZED BY: Jerry Dunn and Mary Mauz RMLA FUN EVENT

By Jerry Dunn • Bear Track Farm • 14550 W. 50th Ave. Golden, CO • 80403-1707 (303)277-1129



Weeks later we sat around Mary's dining room table and discussed our goals for having fun and safety issues. We made a list of all the obstacles we had between us and came up with over 30 and organized them into a beginning open obstacle, public relations, and a pack course. Each obstacle completed by the llama and their handler they would pick up a jelly bean out of a cup. Plans were made for the photo backdrop and where to find enough jelly beans for all if the participants.

We agreed to find a location and a date and advertise this quiet get together for a few people and llamas located a ten acre equestrian open space with plenty of parking owned by the city of Arvada and made a reservation. The use of the facility would be free plus they would

**M**ary and I were talking on the phone in early December lamenting the pressures of llama shows and the exclusion of many llama owners due to the intensity of the competition. Both of us had talked with several people that were looking for an opportunity to play with their llamas in a fun and relaxed event without the hoopla of big shows.



*Jelly Bean Classic, Cont.*

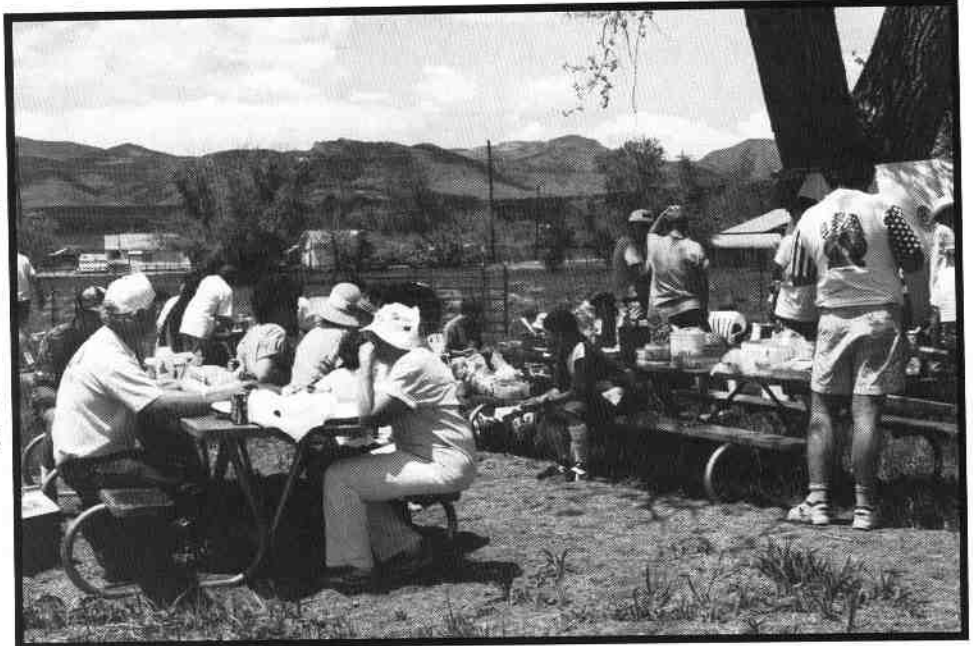
advertise our event out on their billboard along the highway. RMLA agreed to sponsor our event and we were able to get mailing labels for all members along the front range which numbered over 100. It was growing!

Mary found jelly bean paper and we mailed out our flyer in April asking for a RSVP. People called to say they would be there and would bring food for the pot luck lunch. Many who were planning to come were new llama owners and had never attended a show. Some of the old timers were going to bring inexperienced animals for their first outing with other llamas. They were bringing their llamas and children to play.

Burt Gregg, the manager of the equestrian space, was terrific. He stretched 300' of field fence for a barrier between the field and the highway for safety and put out 4 12' picnic tables under the big cottonwood tree. The pump was turned on for fresh water for the llamas and the road was graded. Portable potties were placed in the

trailer lot. He offered their public address system but we decided that would not be necessary.

Before we knew it, close to 90 people responded to the invitation. Maps were drawn and mailed out. I found more jelly bean paper



and Gabi Von Roedern printed up participation certificates for people to fill out when they finished the courses. Mary Mauz donated a llama hand spun lead rope for a drawing. There was a jelly bean jar to guess the number of beans. King Soopers donated the plastic cups for the jelly beans.



The day of the event we loaded up the obstacles and headed for the event five miles up the road. When we arrived the Bear Track Farm kids staked out our llamas and started putting up the courses then every one joined in and helped. It was wonderful. Llamas and kids were everywhere.

We started with a brief welcome, instructions for fun and safety and it was time to play. At times there would be 10 llamas on a

course negotiating the obstacles or sometimes just a bunch of people and llamas standing in the middle of a course chatting. Several adults and kids did the obstacles more than once. I'm not sure whether they repeated the obstacles for the practice or the jelly beans.

A couple of llamas got away from their handlers but with everyone's help the llamas



were returned quickly and all was well.

Our expenses totaled about \$200 which was used for stamps, paper, copies, straw bales, and four big bags of jelly beans.

**This was an easy event to organize with the following points in mind:**

**keep it fun.  
keep it simple and  
keep it small.  
Try it for your self  
in your area.**

There  
were  
Alpacas  
there too!



----- food for thought -----

## How to Kill an Organization

- Don't participate beyond paying your dues - let "them" handle things....  
*Then complain that members have no voice.*
- Decline all officer and committee appointments - you're too busy....  
*Then offer vociferous advice on how "they" should do things.*
- If appointed to a committee, don't work - it's a courtesy appointment.  
*Then complain because the organization has stagnated.*
- If you don't attend regular meetings and committee meeting - don't introduce new ideas to those who do....  
*Then you can play "Devil's Advocate" to those ideas submitted by others.*
- Don't rush to pay your dues - they're too high anyway...  
*Then complain about poor financial management.*
- Don't join membership drives and encourage others to become members - that's time consuming....  
*Then complain that the membership is not growing.*
- Don't read newsletters and other information sent you - it's not that important.  
*Then complain that you're not kept informed.*
- Don't volunteer your talents, that's ego fulfillment...  
*Then complain that your never asked to participate and everything is run by the "click".*
- And if by chance, the organization grows and prospers in spite of your contribution...  
*Grasp every opportunity to tell everyone how tough it was; how hard you worked through the years to bring the organization to it's present level of success.*

# Stillwater Minerals

Since 1989

**Vitamin & Mineral  
Supplements**



Specifically  
Formulated  
for  
Llamas  
and  
Alpacas

## *Most Accepted Supplement*

Stillwater Minerals is the first widely accepted quality vitamin and mineral supplement based on llama nutritional studies by Dr. LaRue Johnson at Colorado State University.

## *Many Improvements*

We continue to consult with Dr. Johnson on formula adjustments. In the past 5 years, we have added special ingredients to help preserve freshness . . . resist clumping . . . plus, we added more vitamins and minerals to combat stress, aid digestion and encourage wool growth.

## *It Tastes Good Too!*

Most important, we even made it taste better. As Dr. Johnson said, "The best endorsement I can give is that my llamas sure eat more Stillwater Minerals Supplement than they ate of my stuff."

## *The Finest Ingredients*

The ingredients still include Zinpro 100® and Vitamin E, just like the original formula, plus 15 other custom ingredients. These additional ingredients add minerals and vitamins that are not found in any other Llama or Alpaca supplement.

## **Four Custom Formulas**

*Free delivery for Continental U.S. and packaged in reusable plastic buckets*

### Original Formula Lama-Min 101

Contains Vitamins A, D<sup>3</sup>, E and Minerals Calcium, Phosphorus, Potassium, Iron, Manganese, Cobalt, Iodine, Selenium and Zinc (Zinpro 100). All balanced for llamas and alpacas.  
25 lbs: \$39.50 50 lbs: \$67.50

### Stress Formula Lama-Min 102

Same ingredients as 101 plus higher levels of all Vitamins and Selenium. Contains Electrolytes to promote water intake - ideal for summer use or other high stress situations.  
10 lbs: \$22.95 25 lbs: \$45.50 50 lbs: \$77.50

### Premium Lama-Min 103

Same as 102 plus DL-Methionine and B-PlexFive for wool quality and growth. This formula has added Copper for feeding programs known to be deficient in Copper.  
10 lbs: \$24.95 25 lbs: \$49.50 50 lbs: \$83.50

### Premium Lama-Min 104

Same as 102 but with Calcium and Phosphorus balanced for alfalfa, plus the highest levels of Vitamins D<sup>3</sup>, and E. Contains DL-Methionine and B-PlexFive for wool quality and growth. Ideal for winter use or diet supplemented with grain.  
10 lbs: \$24.95 25 lbs: \$49.50 50 lbs: \$83.50

## To Place Your Order or for More Information



Owned by fellow llama owners, Bob & Jo Riley  
Post Office Box 1189, Lyons, CO 80540

**800•255•0357**

FAX: 800•648•2383 E-Mail: llama@orci.com



For more detailed information or to order on the Web — <http://www.llama.org/minerals>



# .....aren't they cute?

by Don and Karen Lange • Alpacas of Berthoud Colorado • 316 Bothun Road • Berthoud, CO • 80513 • (970) 532-9852

Upon our arrival in Colorado, after living in or near Chicago, Illinois all of our lives, my wife Karen, and I decided that we would try to find a house with small acreage where we could get a couple of horses and goats for our two daughters, Lisa age 7 and Jessica age 6, to raise and possibly get involved with 4-H.

After spending a few months looking at several places, we bought our place in Berthoud and started watching ads for those horses and goats. To say the least we were already looking at a big life-style change over what we had back in the Chicago area. Little did we know how our plans were about to change again.

Being new to the area, we kept an eye out for new and different things that we could do, one of which happened to be going to the Wool Market in Estes Park. After watching sheep dogs work and sheep shearing demonstrations, we went into the barns and proceeded to look at the goats, sheep and llamas. Then we entered the Alpaca barn.

My wife's first words were, "Oh Don aren't they cute." Little did I know that the horses and goats had just been put on hold until sometime in the future only to be replaced by these animals that none of us had ever seen

before or knew much about.

We spent most of our time in that barn talking to different owners and breeders and looking at all the different animals. Finally, we ended up talking to Chuck Stewart from Stewart's Royal Alpacas in Cañon City, who told us that he had a pet quality male for sale. We told him we would think about it and would let him know.

Within a week we called Chuck and asked if we could come down and see the animal named "Beethoven." We made arrangements to get together with him that coming weekend.

After we got there we checked out Beethoven and had a good long talk with Chuck about how to care for Alpacas. He also provided us with booklets and magazines for us to look at to help us decide if we really wanted to buy this young animal. We thanked him and left for home, promising to call back after we had an opportunity to evaluate what he had told us and to look at all the information he had provided us.

Within a couple of days we called him back and made arrangements to pick up Beethoven, (His mother had arrived from South America already pregnant, father unknown.) While there we talked with Chuck again about the benefits of owning alpacas and



L to R; Monique, Tonto, Beethoven & Tinaja

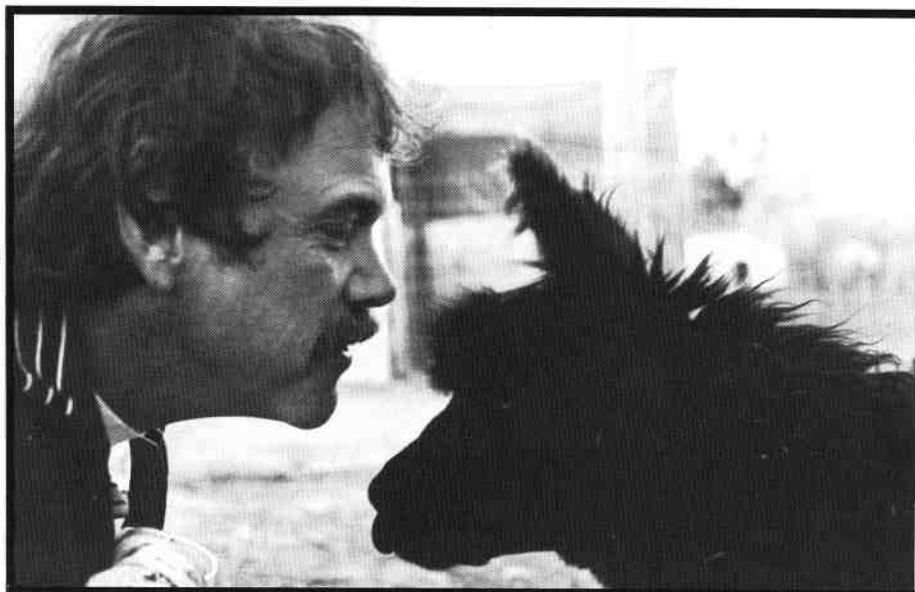


L to R: Lisa & Tonto, Jessica & Beethoven



possibly starting a breeding and fiber business. He explained how he was in the process of acquiring a new herd sire from the Acero Markas line and how this made the sale of what was going to be his future herdsire, a beautiful Chilean named "Tonto", a possibility. We checked out Tonto and then left for home with Beethoven, promising to reply to Chuck's offer during the coming week.

We decided to purchase Tonto as the start of what would become a herd of our own sometime in the future. The



Don and Monique

future arrived within the next month with the purchase of two young females, Monique and Tinaja, again from Chuck, and that is how we started the ABC Ranch [Alpacas of Berthoud, Colorado.]

So now we have started our own business in which the whole family can take an active part in caring for and training these wonderful animals. It has been a real pleasure having them around and we are looking forward with great anticipation to the expansion of our small herd. Our first cria is due to come from Tinaja toward the end of October, 1997 and Monique is due to be bred around the end of April, 1997.

So what started as a pet purchase has expanded into a budding breeding and fiber business which prompted us to join organizations like the RMLA, AOBA and ALSA so that we could take advantage of the vast libraries of video and published materials to help us know and understand our animals as much as we can. These organizations have also helped to put us into contact with other owners and breeders whose knowledge has been a great help to us through conversations with these people, and the events and seminars sponsored by these organizations have aided us greatly in acquiring knowl-



---

## Do you want a preview of the Journal before anybody else reads it?

The editor needs a proof reader for the Journal.....

### Needs include:

Not long distance telephone call from Parker, Colorado. (It's less expensive for everyone.)

Need a fax machine. Helpful for you if it is not at your place of work. It could tie up your fax for a while.

Need not be a member of RMLA.

Usually a draft copy of the Journal just before it's sent out for printing is faxed to the proofer. Proofer reads it and then calls back with changes while the editor marks up the faxed copy. Changes are made and mailed to printer. If you like to proof, call the editor.

# Hoorah, Hoorah, we're going on a hike!

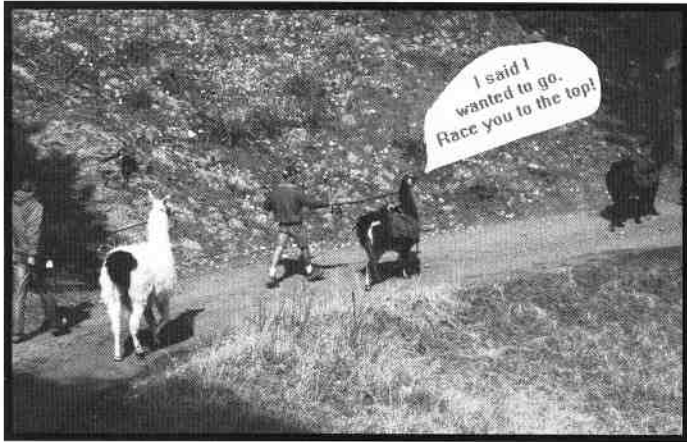
1.



2.



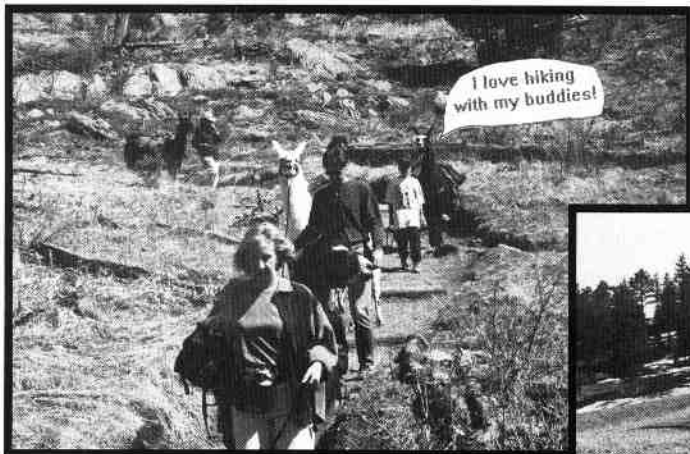
3.



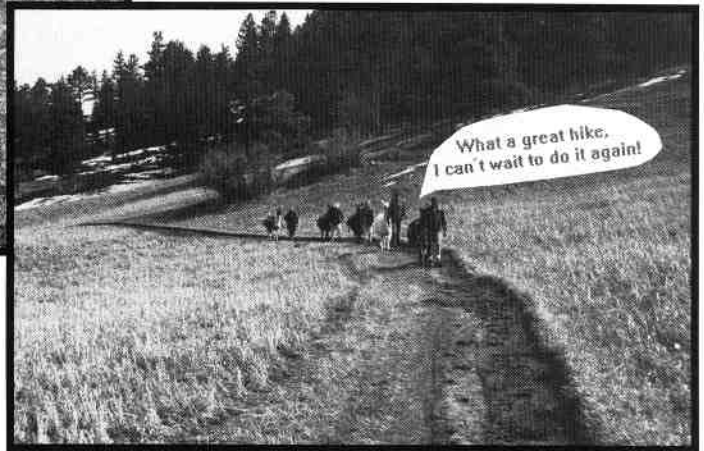
By Gabi von Roedern



4.



5.



"Just For Kids" will return in the next issue.

# Douglas County, Colorado Llama & Alpaca Summer Classic Youth Show

---

The D.C. Summer Classic Youth Show was held August 5, 1997 at the Douglas County Fairgrounds in Castle Rock, Colorado. Youth from as far away as Storey, Wyoming came to participate in this 3rd annual classic event. Altogether, there were 94 entries, despite weather that produced hurricane style rain for the Obstacle courses. In fact, the torrential rains provided an excuse for great camaraderie when those courses were moved inside and run down bam aisles!

A great aspect of this show is renewing the obvious friendships exhibited by the participants, most of whom live so far apart in the region that shows are their only person-to-person contacts. As exhibitors gather for the show, warm "hi's" and "hello's" are exchanged and conversations take up where they left off at the end of the last show. All day, the kids are engaged in interaction while awaiting their tum at the complex courses.

This year's courses were designed by youth, with the concept that the Summer Classic is designed and run by youth. The course designers were: Lloyd Wamsley for Pack, Alissa Veuthey for Public Relations, and Gretchen Kauffman for Obstacle. The courses had many new obstacles and were very challenging for each age level.

Other youth involvement saw Tiffany Coffman as Ring Steward for the Junior Showmanship and Deidre Baird as Ring Steward for Intermediate Showmanship. Most of the youth got involved in moving obstacles, taking turns being gatekeepers, and on-course volunteers, handing out ribbons, and assisting the clerks. The superintendents feel these are great ways for youth to acquire the training they need for eventually managing Open Shows of their own!

The show is unique in its corporate sponsorships, which cover the nearly \$1,000 cost of premiums, trophies, and ribbons. This year's corporate sponsors included FirstBank of Douglas County, Intermountain Rural Electric Association, and Colorado Casualty Insurance Company. Entry fees, with corporate sponsorship, are among the lowest anywhere in the country, which helps make the show affordable and accessible to many youth who otherwise could not attend.

The show is sponsored by Llofty Llamas, the Douglas County 4-H llama club, largest in the state of Colorado. Superintendents are Marie Hinds of Parker and Lougene Baird of Sedalia.

## The Results.....

### Showmanship Division

#### **Sub-Junior**

1st Ashley Fillmore

#### **Junior**

1st Halley Coffman

2nd Deidre Baird

3rd Anna Funke

4th Levi Kauffman

5th Carly Loner

6th Keri McManus

#### **Intermediate**

1st TiffanyCoffman

2nd Adrienne Bergenfeld

3rd Alissa Veuthey

4th Laura Coleman

5th Gretchen Kauffman

6th Heidi Kauffman

### Performance Division

#### **Pack Class**

#### **Junior**

1st Levi Kauffman

2nd Halley Coffman

3rd Heather Grimm

4th Matt Wamsley

5th Deidre Baird

6th Keri McMannis

**Performance Division - Pack**

**Class, continued.**

**Intermediate**

- 1st TiffanyCoffman
- 2nd Ben Riggs
- 3rd Adrienne Bergenfeld
- 4th Gretchen Kauffman
- 5th Sarah Funke
- 6th Alissa Veuthey

**Public Relations Class**

**Sub-Junior**

- 1st Ashley Fillmore

**Junior**

- 1st Halley Coffman
- 2nd Levi Coffman
- 3rd Heather Grimm
- 4th Christa Funke
- 5th Deidre Baird
- 6th Anna Funke

**Intermediate**

- 1 st Ben Riggs
- 2nd Tiffany Coffman
- 3rd Laura Coleman
- 4th Sarah Funke
- 5th Alissa Veuthey
- 6th Lloyd Wamsley

**Obstacle Class**

**Sub-Junior**

- 1st Ashley Fillmore

**Junior**

- 1st Levi Kauffman
- 2nd Deidre Baird
- 3rd Halley Coffman
- 4th Carly Loner
- 5th Anna Funke
- 6th Keri McManus

**Intermediate**

- 1st Tiffany Coffman
- 2nd Sarah Funke
- 3rd Gretchen Coffman
- 4rd Gabi von Roedern
- 5th Ben Riggs
- 6th Heidi Kauffman

**Performance Champions**

**Junior Grand -**

Levi Kauffman

**Junior Reserve -**

Halley Coffman

**Intermediate Grand -**

Tiffany Coffman

**Intermediate Reserve -**

Ben Riggs

*Alpaca Breeders of the Rockies*

**ANNOUNCING!!!**

**THE FIRST ANNUAL FALL FESTIVAL**

Plan to attend this one day event and get some hands-on with these wonderful creatures.

- It's free to the public. • Held indoors. • Vendors with **Alpaca** Jewelry, South American Music, sweaters, and much more.
- Lunch will be available. • Door prizes. • And a lot of Alpacas and folks to answer questions about Alpacas.

••• When: October 18th, 1997 9:00AM - 4:00PM

••• Where: High Prairie Farm Equestrian Center

South of Parker, CO on Hwy 83 at Bayou Gulch Road.

Take I-25 south of Denver to exit 193 (Lincoln Ave.), east to Parker Road, south to Bayou Gulch Road. It's on the left just east of the High School.

This event paid for in-part by:



**See you there for an event you will remember for a lifetime.**

If you need more information contact ABR: Rob or Sue Leonard (303)648-3630 or Ron or Marie Hinds (303)841-4889





**Diana Bryer**  
**"Angela's Alpacas"**  
 oil painting on linen. 20" x 28"

© Diana Bryer

Posters & Limited Edition prints available.

Diana Bryer's imagery is based on the celebration of life and our relationship to each other, the animal kingdom, the changing seasons, and our Mother Earth. Each of her paintings is a prayer for peace for the environment and for balance within the heart of male and female. Diana has lived with her family on a small farm in northern New Mexico since 1977. Her original paintings are in many public and private collections.

This painting was commissioned by the:

*Alpaca Breeders of the Rockies*

©Diana Bryer  
 Rumpelstiltskin Design  
 P.O. Box 458 • Santa Cruz, NM 87567

(To order prints see information to the right.)

||| All prints are in glorious  
 Southwestern color! |||

Number	Item	Total
_____	<u>Artist Proofs (Color):</u> \$300 each - Limited to 50	_____
_____	<u>Color Lithographs:</u> \$175 each - Registered and Numbered - Limited to 250	_____
_____	<u>Color Posters:</u> \$25 each (\$12.50 each for 12 or more)	_____
_____	<u>Color Notecards 12 packs:</u> \$12.00/ea for 12 cards and envelopes. (above image is full size notecard)	_____
<b>Postage and Packaging :</b>		
<u>Prints:</u> (APs, Lithos or Posters) Add \$6.00 total for 1 to 6 prints ordered, 7-12/\$12.00, etc.		
<u>Notecards:</u> Add \$6.00 for 1 to 6 packages of 12 cards & envelopes.		
<div style="border: 1px solid black; padding: 2px;">           Make checks payable to ABR and mail to:            ABR • P.O. Box 600 • Kiowa, CO • 80117         </div>		Total _____

# OUR NEWEST RMLA MEMBERS

Glen Amstutz  
260 Bear Wallow Way  
Silverthorne, CO 80498  
(970)468-5172  
E-Mail: iraglenn@colorado.net or  
71552.20@compuserve.com

Betty Birnbaum  
Rt.2, Box 2011  
Quitman, TX 75783  
(972)524-2436  
E-Mail: poo@peoplescom.net  
Home Page: [http://members.tripod.com/  
~POO/](http://members.tripod.com/~POO/)

William & Denise Hummer  
9632 Indian Wells Drive  
LoneTree, CO 80124  
(303)706-0269  
FAX (303)768-0448  
E-Mail: WK\_Hummer@msn.com

Marilou Johnstone  
HC81 Box77B  
Hobson, MI 59452  
Phone/FAX: (406)423-5554  
E-Mail: 7wirefox@3rivers.net

Lawrence R. & Linda Klope  
FRUIT FULL ACRES  
4166 Co. 416 20th Rd.  
Gladstone, MI 49837  
(906)786-3899  
E-Mail: lklope@up.net

Keith & Dottie LaRue  
NORTHERN OAK LLAMAS  
4246 N44 Lane, P.O. Box 1502  
Paonia, CO 81428  
(970)527-3181

Ken & Jean Lauderdale  
LLAMADALE FARM  
HC62 Box 3117  
Thoreau, NM 87323-9507  
(505)862-9166

Susanna H. Locher  
LUCKY 13 RANCH  
Box 2567  
Glenwood Springs, CO 81602  
(970)625-3620  
FAX (970)625-3621

Pat & Bobby Lowe  
HIGH MOUNTAIN LLAMA RANCH  
P.O. Box 272  
Cedaredge, CO 81413  
(970)856-3777

Rita & Craig Miller  
RITA'S ROCKIN R  
1360 E. 3200 S.  
Francis, UT 84036  
(801)363-0090  
FAX (801)783-2676  
E-Mail: Rita@travelres.com

Anna Morelli  
11330 S. Holmes Road  
Colorado Springs, CO 80908-3937

Ellen Ogg  
5266 Diehl Road  
Metamora, MI 48455  
(810)797-2016  
(Work) (248)745-7024

Rex & Dalene Reinecker  
WHEATFIELD LLAMAS  
Rt.1, Box 43A  
Quinter, KS 67752-9705  
(913)754-3996

Anne Sheridan  
8010 Hwy 115  
Penrose, CO 81240  
(719)372-0353

Peter & Doris Wagner  
EVERGREEN LLAMAS  
2525 Evergreen Road  
Colorado Springs, CO 80921  
(719)262-9922  
FAX (719)481-8067

Laura Tuttle & Jacque Walton  
RIO CASA  
P.O. Box 67  
Sinclair, WY 82334  
(307)324-2996

## ADDRESS CHANGE:

Kristi Schulze  
4550 Southern Oak Lane  
San Angelo, TX 76904

If one of these  
folks is your  
neighbor, call  
or write and  
welcome them  
to the Lama  
family.

**Welcome to RMLA!**

# RMLA MEMBERSHIP FORM

MEMBERSHIP YEAR RUNS FROM JANUARY 1ST THROUGH DECEMBER 31ST

**Life Ranch Membership: \$500** (Up to 2 people per membership; 2 votes; 1 Journal; special recognition in Directory; 25% discount on '96 Conference fees; onetime free 1/4 page Journal ad in issue specified by life member. If there are any future special assessments, life members will pay those the same as annual members would.)

**Ranch Membership: \$50.00** per year (Up to 2 people per membership; 2 votes; 1 Journal; 1 Directory; entry onetime free business card ad in Journal, in issue at Editor's discretion; ranch entry in bold letters in Directory) This is for members who are actively marketing and selling animals.

**Adult Individual Membership: \$30.00** per year (One person per membership; 1 vote; 1 Journal; 1 Directory entry) This is ideal for members who own a few llamas for their own enjoyment, or for those who are interested, but don't yet own llamas.

**Junior Membership: \$10.00** per year (Must be 18 or under and have an adult member sponsor: Not entitled to vote, but would receive Journal and reduction in Conference fees as encouragement to participate.)

Life Ranch                      Amount Paid \$ \_\_\_\_\_  
 Ranch                                Amount Paid \$ \_\_\_\_\_  
 Individual                        Amount Paid \$ \_\_\_\_\_  
 Junior                                Amount Paid \$ \_\_\_\_\_      Sponsor \_\_\_\_\_

Name (1) \_\_\_\_\_

Farm/Ranch Name \_\_\_\_\_

Name (2) \_\_\_\_\_

Phone Number \_\_\_\_\_

Address \_\_\_\_\_

City \_\_\_\_\_

State \_\_\_\_\_ ZIP+4 (please) \_\_\_\_\_ - \_\_\_\_\_

Number of llamas owned: Females \_\_\_\_\_ Intact Males \_\_\_\_\_ Geldings \_\_\_\_\_

Number of alpacas owned: Females \_\_\_\_\_ Intact Males \_\_\_\_\_ Geldings \_\_\_\_\_

What do you do with your animals:

<input type="checkbox"/> Breeding (BR)	<input type="checkbox"/> Training (TR)	<input type="checkbox"/> Driving (DR)
<input type="checkbox"/> Sales (S)	<input type="checkbox"/> Products (PR)	<input type="checkbox"/> Boarding (BD)
<input type="checkbox"/> Wool (WL)	<input type="checkbox"/> Research (RE)	<input type="checkbox"/> Judging (JG)
<input type="checkbox"/> Packing (PK)	<input type="checkbox"/> Leasing (LE)	<input type="checkbox"/> Brokering (BK)
<input type="checkbox"/> Commercial Packing (COM'L PK)	<input type="checkbox"/> Other (Specify) _____	

Check if interested in working on these committees:

<input type="checkbox"/> Finance	<input type="checkbox"/> Marketing	<input type="checkbox"/> Fiber
<input type="checkbox"/> Continuing Education	<input type="checkbox"/> Nominations/Election	<input type="checkbox"/> Membership
<input type="checkbox"/> Events	<input type="checkbox"/> Research	<input type="checkbox"/> Publishing
<input type="checkbox"/> 4-H & Youth	<input type="checkbox"/> By-laws	<input type="checkbox"/> Library

Mail this form (or copy) with your check (payable to RMLA) to:

**Judy Sealy, Membership Chairperson • 593 19-3/4 Road • Grand Junction, CO 81503**

You may join online at: <http://www.llama.org/rmla>

- Photos can be color or black and white, although color is preferred.
- All layout and design for Journal ads is provided at cost, contact the editor for pricing.
- This publication is black and white. Line screen is 115 lines/in.
- Each spring a promotional issue is printed. The center layout and outside cover is printed with a base color. An additional copies are printed for distribution to the public throughout the year.
- 1997-1999 advertising deadlines are: Oct. 15, '97, Dec. 1, Feb. 1 '98, April 1, Aug. 1, Oct. 15, Dec. 1, Feb. 1 '99, April 1, June 1, Aug. 1, Oct. 15, Dec. 1.
- Mail ads to: RMLA Journal • 9349 Tammy Lane • Parker, CO • 80134-7511.
- Check made to RMLA and full payment MUST accompany ad – no credit given.

## Classified Ads

RMLA Member - 50 words \$5.00  
RMLA non-Member - 50 words \$10.00

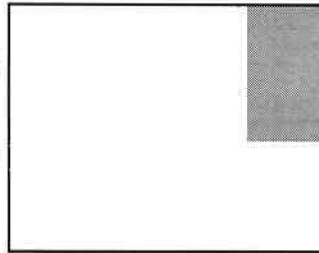
For more than 50 words - 15¢ per word

## Advertising Rates

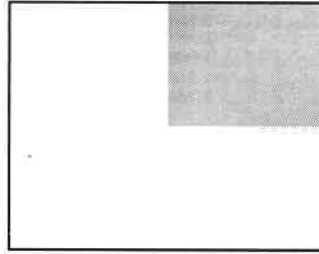
Ad sizes	1 or 2 issues	Same ad 3 or more Issues*
Business Card	\$10	\$10
1/4 Page	\$20	\$18
1/3 Page	\$30	\$27
1/2 Page	\$40	\$36
2/3 Page	\$55	\$49.50
Back Cover	\$50	\$45
Full Page	\$65	\$58.50
Inside front cover	\$80	\$72
Inside back cover	\$80	\$72
Promotional issue only (with base color)		
Full Page Center layout		\$135/page
Back Cover		\$115

\*Multiply amount by number of issues

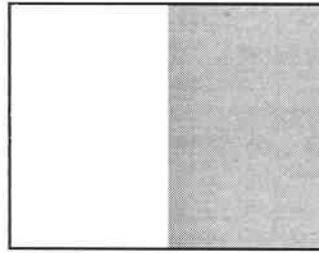
## Display Ad Sizes



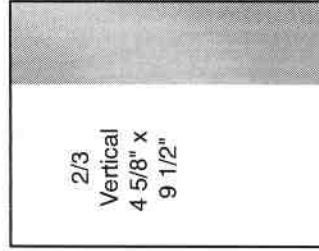
Business Card  
3 1/2" x 2"



1/4 Page 4 3/4" x 3 1/2"

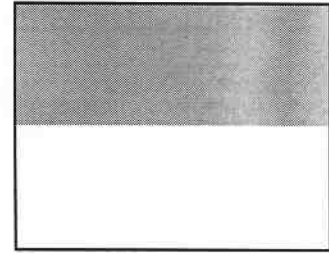


Half Page Horizontal  
4 3/4" x 7"

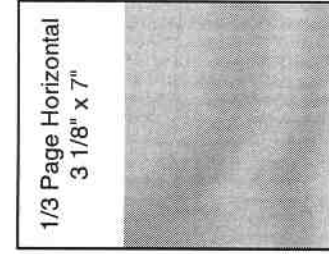


2/3  
Vertical  
4 5/8" x  
9 1/2"

1/3 Vertical  
2 3/8" x 9 1/2"

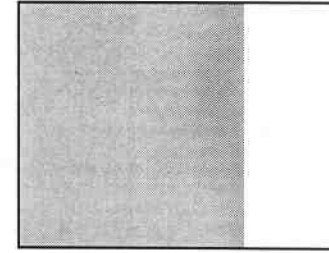


Half Page Vertical  
4 3/4" x 9 1/2"

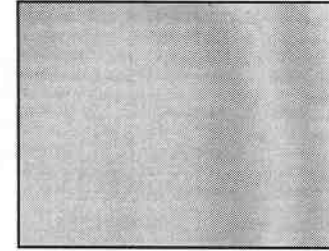


1/3 Page Horizontal  
3 1/8" x 7"

2/3 Page Horizontal  
6 3/8" x 7"



Back Cover 8" x 7"



Full Page 9 1/2" x 7"



# Classified Ads

**GOOD PACKERS:** 11 geldings, 1 stud, ages 6-up, experience 3-up, prices \$1350-up. Stud is a prize. Sopris gear avail w/ llamas. Also lovely females-i proven, 1 yearling. **Rendezvous Llamas**, 307-739-1639. (11/97)

**RANCH AND FARM SUPPLIES** Complete line for new/established farms. Halters, leads, grooming, shearing, scales, chutes, wormers, vaccines, probiotics, cria care, birthing needs, signs, weathervanes, packs, carts, harnesses, show items, watering and feeding equipment, manure vacuums, spreaders, fly control, watches, clocks, vinyl fencing, and more. Best prices guaranteed. **Useful Llama Items** - Brochure-3540 76th, Caledonia, MI 49316 1-800-635-5262. usefulll@cris.com (11/97)

**GREAT ALPACA STARTER HERD.** Three black and one coffee color females. All are bred, registered, micro-chipped and blood typed. Proven herd sire is free with this package. **High Plains Llamas & Alpacas.** 307-537-5292 (8/97)

**FREE BREEDING TO MC HAMMER:**—8X Grand Champion—with purchase of outstanding Hammer daughters: Stevie Nicks, 6/96, stunning silky-wooled bay, or Mariah Carey, 3/96, beautiful silky-wooled black, bred to Ulysses, a true black Andean Spirit son. Also available: Hammer-bred females, producers of champions, starting at \$2,000. Plus proven Hammer son, Dire Straits, long, silky-wooled bay, \$2,500. **Overland Trail Llamas**, Livermore, CO. 970-493-2335. Come Visit! (8/97)

**TTEAM TRAINING CLINICS WITH DALE PETTIGREW:** August 9-10, Crawford, CO or August 23-24, Kiowa, CO. Learn effective, gentle methods for teaching your lama to think and cooperate; change problem behaviors; communicate clearly. Crawford Clinic, contact Cheney Clouch, 970-921-3040. Kiowa Clinic, contact Craig Dierksen, 303-621-2584. (8/97)


**FEMALES AVAILABLE SIRED BY G.L.L.** Midnight Express and Rocky Mountain Niwot with light to medium wool. Nice tall agile girls that are potential foundation stock for packing, one to two years old. Breedings available for these girls, some are already bred. **Bear Track Farm** (303)277-1129 (8/97)

**TWO LLAMAS FOR SALE:** Marcel, 2 1/2 years, big boy, white, son of Candyman (well known among breeders), Jasper, 3 years, brown. Both easy to halter and respond well on hikes. Neither has had extensive training. \$1200/pair. \$500 for 7 corral panels inc. gate. **Louis Krupnick** 651-5149, Longmont area. (8/97)

**PAINT SALE:** Several young males to choose from, sweet tempered, variety of ages, (other colors also available) sired by GLL Java, starting at \$600. Also several females available, from weanlings to experienced, bred moms (bred to Java, Gandy Dancer, or 1/4 Bolivian, silky-wooled Ragin' Cajun); starting at \$2000. Visit soon for best selection. **Llamarage**, Joe & Mary Beth Hartsough, 970/785-2463. (8/97)

**LLAMA LOOKING FOR NEW HOME:** Chip is an extremely handsome, friendly, chocolate male, d.o.b. 7/14/95. Great 4H/PR potential. He was shown at '96 L.O.C.C. by my 7 year old daughter. \$350. Also, his dad, T.J.'s Blackhawk is available for the '97 breeding season. **Cria Creek Ranch** (303) 526-1425. (8/97)

**LOOKING TO FIND INTACT COPY OF FEBRUARY 1996** issue of the RMLA Newsletter. If you have copy you no longer want, please send price/info - **Elizabeth Martin**, P.O. Box 669, Marysville, Washington, 98270, (360)658-0568 or 6ejmart@gte.net. (11/97)

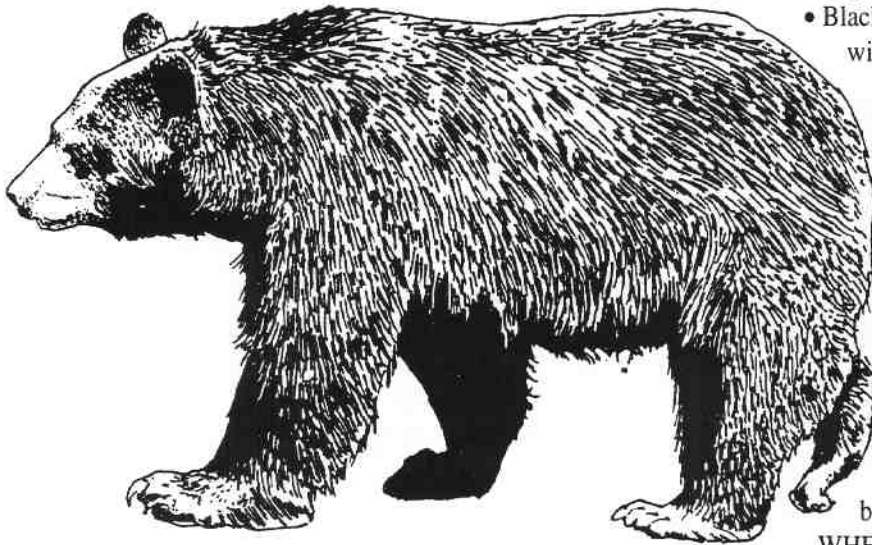
*Classified Ads continued on the next page.* 

**GIRLS! GIRLS! GIRLS!** Very special llamas at reduced prices to good homes. These are top quality 1 & 2 year olds. All are trained for easy handling. **High Hopes Llamas** (303)646-0989. (8/97)

**WANTED: LLAMA DRIVING CART.** Please call Judy Sealy, **Grand Valley Llamas**, (970) 241-7921 in Grand Junction, Colorado. (8/97)

**SPINNING LLAMA AND ALPACA:** 44 page book by Chris Switzer. Sections on Origin, Fiber ID, Cleaning and Collecting, Shearing, Preparation, Blending, Dyeing, Spinning, Marketing and Selling, Storage of Wool, and Projects. \$10 plus \$1.60 postage and 3% Colorado Tax. **Chris Switzer**, Box 3800, Dept. R., Estes Park, CO 80517. (???)

## BEARS!



### PHYSICAL APPEARANCE

*Ursus americanus*, meaning "American black bear" is the bear's scientific name. Despite the common name, black bear, they aren't always black. They may be honey-colored, blond, brown or black. They may have a tan muzzle or a white spot on their chest. Most Colorado black bears are some shade of brown, and the sometimes appear cinnamon-colored, leading some people to mistake them for grizzly bears.

- A black bear's body appears heavy and is supported by short, powerful legs. The highest, point of a black bear is the middle of its back. There is no prominent shoulder hump as there is on the larger grizzly bear.

- Black bears vary in size and weight, with males generally being larger than females. Adult males average 275 pounds while the adult female may average 175 pounds.

Depending on the season, food supply and gender, they may weigh anywhere from 125 to 450 pounds. Black bears measure about 3 feet high when on all four feet or about 5 feet tall standing upright.

### SIGNS AND SOUNDS

- Black bear tracks are very distinctive - the hind footprint resembles that of a human. All bears have 5 toes, with the front foot short and about 4-5 inches wide. The hind foot is long and narrow, measuring about 7 inches. Claw marks may or may not be visible.

- Bears use trails just as people do since it's easier to travel on a trail than through underbrush. Being aware of tracks, droppings and other bear signs (claw marks on trees, rotten logs ripped apart and hair on tree bark from rubbing), will allow you to determine better the presence of bears.

- It's easy to recognize a black bear's sizable droppings of plant leaves, partly digested berries, seeds or animal hair.

- Black bears are solitary. They don't associate with other bears except sows with cubs or during breeding. Bears may gather at a place with abundant food — for feeding.
- Bears are intelligent and curious. They can see colors, form and movement. Although their vision is good, they generally rely on their acute senses of smell and hearing to locate food and warn them of danger.

- Adult black bears make a variety of sounds. However, the most commonly heard sounds are woofing and jaw-popping. The young ones whimper or bawl.

### WHEN BLACK BEARS MEET PEOPLE

Where bears and people share habitat, following these simple precautions will reduce your risk of conflicts. Learn as much as you can about bears and their habitat. When you are in bear country, know what areas a bear may use -during the different seasons. Watch for bear sign (tracks and droppings). Be aware of your surroundings and try to determine if bears may be present. This information is made available from the Colorado Division of Wildlife for your information and to keep the llamas and alpacas safe.



## WINDING TRAILS LLAMAS SALES LIST

RNL DON ELADIO 5.31.94

CL CHEWBACCA X DULCE VICTORIA

Don Eladio is a 3/8 Chilean, heavy wooled tri-color. He is ready to be your herd sire. He placed in the ribbons at the 1996 LOCC Llama Show. He possesses an exceptional ring panache. \$1500.

RNL SPATSY CLINE 7.10.94

STAGE STOP RASPUTIN X GDL HALCYON

This strong North American will be an asset to any breeding program. She is bred to ALSA Halter Champion GLL Java for a fall '97 cria. Spatsy has great size, 324#, and comes from a line of easy breeders and heavy milkers. \$2000.

RNL ESTRELLITA 8.5.93

COCA-COLA X TICTIC

Estrellita is bred to ALSA Halter Champion GLL Java for an October '97 cria. She has good size, 300#, and a long production life ahead of her. \$1800.

WINDING TRAILS DON RICO 9.4.96

KAHURA URU TABERNASH X RNL ESTRELLITA

Don Rico will make an excellent performance and showmanship llama for your young showperson! \$900.



RNL DON ELADIO  
CL CHEWBACCA X  
DULCE VICTORIA

WINDING TRAILS LLAMAS. JAN REDENBARGER. GOLDEN, CO. 303.642.0140

## *THIS SPACE FOR RENT*

*PLEASE SEND YOUR CAMERA READY AD TO THE EDITOR.  
COST FOR THIS AD IS \$50/ISSUE*

*THANK YOU!*

RMLA  
595 19 3/4 Road  
Grand Junction, CO 81503

Patty Opperman  
12185 West 13th Ave.  
Golden CO 80401-4303

Non-Profit  
Organization  
U.S. Postage  
**PAID**  
Kansas City, MO  
Permit No. 6035

Address Correction Requested