

# JOURNAL

O F T H E

# RMLA

August  
1996



ROCKY MOUNTAIN LLAMA AND ALPACA ASSOCIATION

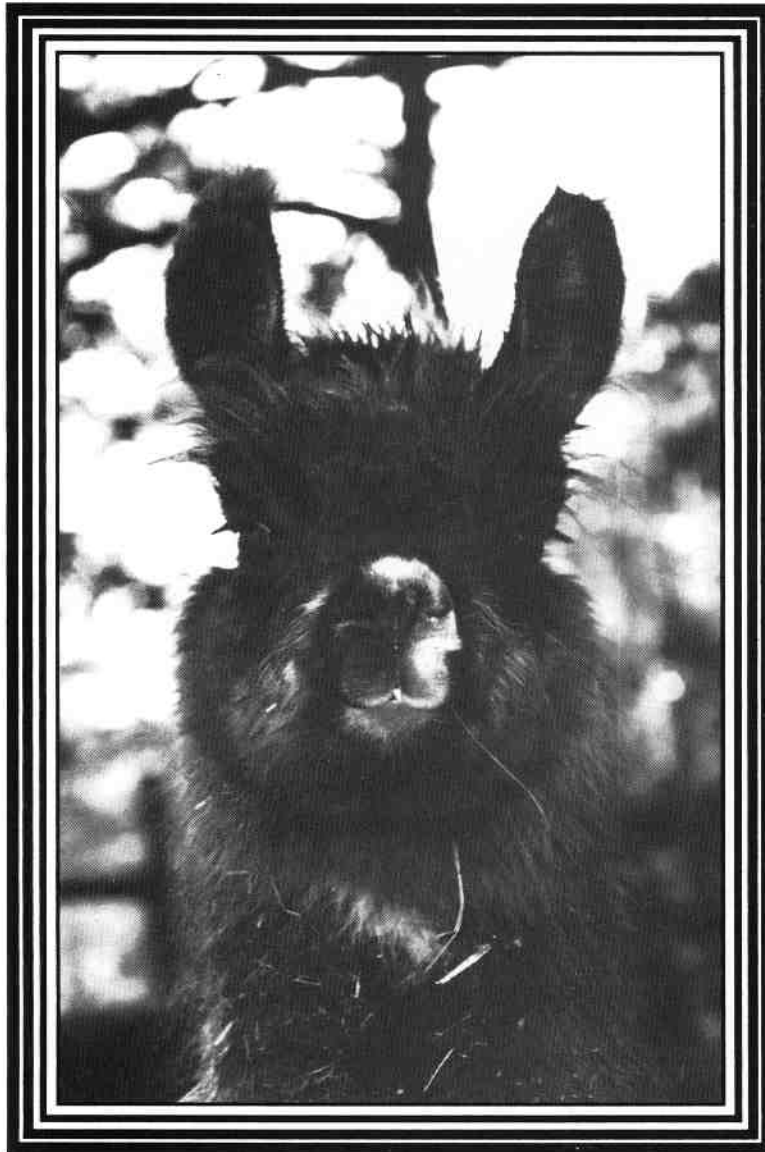


**FALL CONFERENCE PREVIEW**  
**INSIDE.**



# Serenity Lane

LLAMAS & ALPACAS

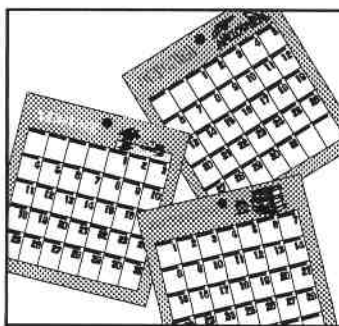


Top quality animals at affordable prices    Breeding services available  
No risk contracts                      Customer satisfaction is our primary goal



Bill & Donna Brown  
15293 W. Hwy. 24 Woodland Park, CO 80863  
Phone or Fax 719-687-1224

# In This Issue.....



**Calendar of Events** 6



**You Be The TTEAM Trainer;** 15  
**Part II**

**Kids and Llamas in the Park** 27

**Do You Have A Lavender Llama?** 29

**BIOS of RMLA Board Member Nominees**  
See Page 36

**Electronic Sources of Information on Llamas and Alpacas**  
World Wide Web INTERNET E-Mail 24

**Preview of the 1996 RMLA FALL CONFERENCE**

*The Best Conference ever... plan to attend* 30

**CAMELID NEONATAL SEMINAR** 32  
by Dr. LaRue Johnson, DVM

**Show Results:**  
Estes Park Wool Market Llama Show, <sup>Starts on</sup> 40  
ALPACA SHOW  
**INTERMOUNTAIN LLAMA CLASSIC** and *The New Mexico Spring Fling.* 11 pages!

**ALSO**

U.S. Department of the Interior - John's Disease Letter .....	5
RMLA Board of Directors Minutes .....	8
Soil Erosion Impact Study .....	12
The Unification Effort... Where it Stands at This Point in Time .....	18
Nellie Newcomer .....	23
<b>Advertising in the RMLA Conference Notebook</b> .....	33
Lama Research Projects Approved by Morris Animal Foundation - 1995 .....	34
Just for Kids .....	38
Lamas in the News .....	39
<b>FIBER</b> National Camelid Fiber Co-op .....	52
Update-RMLA Fiber Co-op at Estes Park Wool Market .....	53
Classified Ads .....	54
New Members .....	56
RMLA Membership Form .....	58

# Rocky Mountain Llama and Alpaca Association

## Board of Directors

<i>President</i>	<i>President-Elect</i>	<i>Vice-President</i>	<i>Secretary</i>	<i>Treasurer</i>
<b>Cheryl McCutcheon</b> Post Office Box 57 Ruidoso Downs, NM 88346 (505)378-4503	<b>Linda Kyriopoulos</b> 2680 West 5700 South Mt. Sterling, UT 84339 (801) 245-3529	<b>Bob Riley</b> P.O. Box 1189 Lyons, CO 80540 (303) 823-5409	<b>Julie Messick</b> 7411 North Road 2 East Monte Vista, CO 81144 (719) 852-4852	<b>Lougene Baird</b> 2210 Pine Wood Road Sedalia, CO 80135 (303) 688-1887

## Other Volunteers

<i>RMLA Library</i>	<i>Journal Photographer</i>	<i>Caring for Llamas &amp; Alpacas and 4-H</i>	<i>Journal Editors</i>
<b>Sharon Herbold</b> 15350 Highway 83 Colorado Springs, CO 80921 (719) 495-3092	<b>Bob Riley</b> P.O. Box 1189 Lyons, CO 80540 (303) 823-5409	<b>Julie Messick</b> 7411 North Road 2 East Monte Vista, CO 81144 (719) 852-4852	<b>Ron &amp; Marie Hinds</b> 9349 Tammy Lane Parker, CO 80134-7511 (303) 841-4889 (303) 841-7635 fax

## Committees

<i>Committee</i>	<i>Liaison</i>	<i>Chairperson</i>
Finance	Bob Riley	Sandy Hackbarth
Continuing Education	Cheryl McCutcheon	Jan Redenbarger
4-H and Youth	Linda Kyriopoulos	Linda Kyriopoulos
Marketing	Rob Riley	Jim Osmun
Nominations/Elections	Linda Kyriopoulos	Craig Dierksen & Rosie DeLullo
Research	Bob Riley	Ron Baird
By-Laws	Cheryl McCutcheon	Jo Riley
Fiber	Julie Messick	Sharon Beacham
Membership	Cheryl McCutcheon	Judy Sealy
Library	Lougene Baird	Sharon Herbold
Events Committee	Julie Messick	<i>(Chair Open)</i>
Publishing	Lougene Baird	Journal: Ron & Marie Hinds

## Journal Staff

**Editors:** Ron and Marie Hinds

**Associate Editors:** Marilyn Arnold, Sharon Beacham, Bob and Barbara Hance, Stanton Lacher and Gail Segreto, Maggie Merrill, Candy Montgomery

**Journal Deadlines** February issue ..... December 25th August issue ..... June 25th  
May issue ..... March 25th November issue ..... September 25th



© 1996 The Rocky Mountain Llama and Alpaca Association



Reproduction of articles herein is authorized subject to written permission being obtained from the individual authors. "Exchange Newsletters" may reproduce articles as needed so long as the author and the publication is given credit for the original work. Exception: Articles denoted with "All-Rights-Reserved" must get approval from the author.

**NOTE:** The information contained in this Journal is not intended to be a substitute for qualified professional advice. Our readers are encouraged to consult with their own veterinarian, accountant, or attorney with any questions concerning their animals or business operations. RMLA is not responsible for any losses resulting from reader's failure to heed this caution.

August, 1996 - RMLA



# United States Department of the Interior

BUREAU OF LAND MANAGEMENT  
National Applied Resource Sciences Center  
Denver Federal Center, Building 50  
P.O. Box 25047  
Denver, Colorado 80225-0047

IN REPLY  
REFER TO:

6100 (RS-130)

July 1, 1996

To all interested parties:

Enclosed are the edited proceedings from the Johne's Disease workshop held at Colorado State University on March 12, 1996.

The reason for the long delay is that we decided that each participant should have a chance to review what was taken from the tapes of his/her presentation. Some of the presenters did not change or edit their presentations. None of the editorial changes affected any of the data presented or the conclusions drawn.

While not stated as a consensus of the group, most of the attendees would agree that Johne's Disease is a disease of filth and crowding. The most common mode of transmission is fecal/oral, and the primary source of infection is feces from chronically infected animals. The consensus of the veterinarians at the meeting was that animals must have prolonged exposure to the organism in order to become infected. In addition, an animal must also receive massive numbers of the bacteria (in the order of  $10^8$  per gram of fecal material) in order to become infected.

These infection requirements can hardly be met in free-ranging animal populations. This is not to say that there is no possibility of free-ranging wildlife or domestic species getting Johne's disease from llamas or any other species, but the chances are so remote that only cursory monitoring of our free-ranging wildlife populations is needed.

Therefore, it is our conclusion that it is unnecessary for the Bureau to consider banning llamas from the public lands based on the current understanding of this particular disease.

If you have any further questions or would like additional copies of the proceedings, please contact Ray Boyd, RS-130, at extension 6-6310.

Thank you for your interest in this important public land management issue.

1 Enclosure

1 - The Edited Proceedings from the Johne's Disease (95 pp)

Transcripts of the (unedited) March 12th meeting are available(204 pgs): For copy send name, address and check for \$15 to cover P & H to: Llama Legal Defense Fund • P.O. Box 1189 • Lyons, CO • 80540.

Check out the latest on the WWW at: <http://www.llama.org/personal/llama/johnes/> or <http://www.vetmed.wisc.edu/pbs/johnes/>

# “Calendar of Events”

## **August 6, 1996: Douglas County ALSA Youth Llama Show; Castle Rock, CO**

Cool, covered open sided barns and lots of space to make a great farm display is available. The show welcomes all youth to come for a wonderful time. Show starts at 8:30 A.M., barns available the afternoon before the show. Mary Beth Hartsough has accepted our invitation to be your ALSA Judge. Contact Lougene Baird, 303-688-5445 or Marie Hinds, 303-841-4889 or e-mail at RONLAMAGAOL.COM for information. Qualifier for the ALSA Central Regional Championship Show.

## **August 9-11, 1996: Great Lakes Alpaca Expo / FIBERFEST; Kalamazoo, MI**

The Expo will be held in conjunction with FIBERFEST '96. The forum, FIBERFEST's education arm, will be held just prior to the Festival on August 7, 8 & 9. For information on classes, exhibiting, or showing, contact Jayne Wick at 414-377-8420.

## **August 11, 1996: Laramie County Fair Llama Show; Laramie, WY**

ALSA sanctioned youth show; halter class, packing, open obstacle, PR and more. Contact Dick Beach at 307-634-3638.

## **August 12th & 13th, 1996: Second Edition of South Dakota's First Llama Show, Aberdeen, SD.**

Held in conjunction with the Brown County Fair. Cash prizes and trophies. For more information and entry contact: Kathy Maddox • Two Bridges Llamas • RR2 Box 110 • Redfield, SD • 57469-9308 • Phone/fax at (605) 472-1548.

## **August 16-18, 1996: Colorado State Fair ALSA Llama Show; Pueblo, CO**

ALSA sanctioned and RLMA sponsored event. Youth Classic show; public relations, obstacle and more. Plan to attend. Contact Chris Brown at 719-784-3220.

## **September 6 - 8, 1996: MLA Llamafest; Kalamazoo, MI (fairgrounds)**

Llamafest is moving! The same great show and sale is moving to a new date. Sponsored by the Michigan Llama Association, Llamafest will include an ALSA show, llama sale, Miss Llamafest, workshops, Pet-A-Llama and more. For information contact Terry Wortz, 616-623-3366 or Sue Frambes at 517-857-3787.

## **September 7, 1996: New Mexico State Fair - Youth Llama and Alpaca Show; Albuquerque, NM**

A first time event! Both 4-H and Open Youth will compete in same classes. Age divisions from 9 to 19. There will be 21 classes. Classes will be \$7.00 with payback to 6th place. For entry forms and fair book call Edwina Barela, 505-265-1791. For class descriptions, contact Superintendent Karen Reyer, NM Girls Ranch, General Delivery, Lamy, NM 87540 or (home) 505-466-6280 before 8AM; (Office) 505-466-7459 8-12 1-5 M-F; 505-466-1409 fax. Wally White will be the judge. (See September 21st and 22nd below for continued NM State Fair Llama events).

## **September 13 & 14, 1996: The Northern Rockies Llama Classic; Bozeman, MT (Gallatin Co. Fairgrounds)**

Beginning at 1:00 p.m. Saturday, 90 select llamas and alpacas will be offered for sale. Other events include: John Mallon Clinic, packing clinic, Exhibit Booths for buyers and browsers, wool demonstrations, Social, and complimentary Barbecue. For more information, contact Jonathan Blacher, 406-587-8077, Fax 406-586-5687 or e-mail JONATHAN@ALPINET.NET

## **September 14 & 15, 1996: LOCC Fall Classic ALSA Llama Show; Colorado Springs, CO**

ALSA Sanctioned and RMLA Sponsored. Indoor arena, 400 stalls, held at Penrose Equestrian Center, Halter and Performance classes, adult and youth classes, outdoor races and obstacle course. For information, contact Mark Wittrup, 719-683-2834. Don't miss this new event. This is a qualifier for the Second ALSA Central Regional Championship Show in 1997.

## **September 15, 1996: John Mallon Clinic, Bozeman, MT**

Held in conjunction with the Northern Rockies Llama Classic at the Gallatin County Fairgrounds. Your host is Morgan Saint Ives, 2575 Outlaw Drive, Belgrade, MT 59714, (406) 388-4803. Call for B & B discount offer. Other accommodations are also available, call Morgan A.S.A.P.!

## **September 20 & 21, 1996: RENO EDITION '96; Reno, NV (Reno Livestock Events Center)**

1st Annual Reno Invitational Llama Sale, 2nd Annual "Best of the West" ALSA Llama Show. For more information, contact Dick or Pat Wickum, Firecracker, Inc., 21325 Finn Road, Sheridan, OR 97378. 503-843-2765 505-843-3030 fax, Firecracker office: 1-800-876-8816. See page 35.

## **September 21 & 22, 1996: New Mexico State Fair ALSA Llama & Alpaca Show; Albuquerque, NM**

This is a qualifier for the Second ALSA Central Regional Championship Show in 1997. Premiums will be awarded. Separate halter class for Alpacas. Contact Edwina Barela at 505-265-1791 or NM State Fair, P.O. Box 8546, Albuquerque, NM 87198.

## **September 28 & 29, 1996: Taos Wool Festival; Taos, NM**

A wonderful place to learn about fiber. RMLA will have a booth for consignment of fiber. Come to Taos for a great time! See related fiber article on page 53. Martinez Hacienda will host an Alpaca Show during the Festival. See article on page 14.

*Calendar of Events, cont.*

**October 2nd, 1996: Camelid Neonatal Seminar by Dr. LaRue Johnson, DVM**

Held preceding the RMLA Conference. Clinic will be held at Great Divide Llamas in Masonville, just outside Loveland. Contact LaRue by e-mail, fax or mail. See page 32 for times, cost, email, fax, address and other information.

**October 3rd - 5th, 1996: RMLA Conference '96; Longmont, CO**



Mark your calendar and plan to attend. Return to Longmont, Colorado. Enjoy a beautiful autumn weekend at the foot of the Colorado Rockies and the best RMLA Conference ever! The emphasis will be on marketing and fiber. Pre-Conference Clinics will include an ALSA Show Clinic, a full-day Packing Clinic with a short hike in the National Forest, and a Photography Workshop. Registration Packets will be mailed in August! See the center layout, pages 30 and 31, for more information.

**October 4th - 6th, 1996: Fall Celebrity Sale, Columbus, OH**

Contact Tim Vincent at (541) 389-7114, (514)388-8241 fax or Tom Simmons at (209)748-2230, (209) 748-5625 fax.

**October 12th - 19th, 1996: Northern International Livestock Exposition; Billings, MT**

For more information call 406-256-2495.

**October 26 & 27th, 1996: Driving Clinic with Jerry Dunn; Golden, CO.**

So you want to learn how to drive! Llamas, that is. Well here is your chance. Contact Jerry at 303-277-1129 • 14550 W. 50th Ave. • Golden, CO • 80403

**November 9th - 11th, 1996: North American Llama & Alpaca Show & Silent Auction; Louisville, KY.**

Sponsored by the KY Llama and Alpaca Association. Welcome to the Grand Finale of the Show season!! Indoor facility. Fiber classes, new obstacles, trophies and premiums, youth discounts, silent auction, vet clinic on the 10th and more. Contact Linda Ison (502) 222-9504.

**1997**

**January 11th & 12th, 1997: The 1997 National Western Llama Show; Denver, CO**

Mark your calendars and plan to attend with or without llamas or alpacas!. Superintendent is Jerry Dunn. Had 200 llamas and alpacas in 1996.

**May 24, 1997: Great Western Roundup Llama Auction; Logan, UT, Cache County Fairgrounds.**

Held during the Intermountain Llama Classic. No consignment fees, 10% sale commission, \$50/llama to enter sale. Contact Steve Kyriopoulos • 2680 W. 5700 South • Mt. Sterling • UT • 84339 • (801)245-3529. See page 19.

An extraordinary photo graces the cover of this issue. A local newspaper in Logan, Utah took the photo to promote the 1996 Intermountain Llama Classic. It is Linda Kyriopoulos and Hawkins. Linda will be installed as the new President of RMLA at the October Conference.

***Blue Line Design***

**Business Stationery  
Advertising Art  
Brochures  
Logos**



Maggie Merrill  
303-840-4797  
noramm@aol.com



**Hollybrook Farm  
& Llama Ranch**

*Llamas to Breed, Pack, Pet & Guard  
Trained & Touchable  
Fleece, Roving & Yarn  
Performance Guaranteed*

*We specialize in gentle dispositions  
Strong bodies • Fine Fleeces  
Consultation for new owners*

Visitors Welcome

Since 1983

Cliff & Pat Skelton, Stuart Skelton  
2302 Legge Rd. Mount Vernon, WA 98273  
(360) 445-5262

# MINUTES OF THE RMLA BOARD OF DIRECTORS' MEETING

Julie Messick, RMLA Secretary, 7411 North Road 2 east, Monte Vista, CO • 81144 • (719)852-4852

## March 13, 1996 Teleconference

The teleconference meeting was called to order at 7:30 PM. by President Cheryl McCutcheon. Board Members present were Cheryl McCutcheon, Linda Kyriopoulos, Bob Riley, Lougene Baird, and Julie Messick. Guests present for a portion of the call were Ron & Marie Hinds, and Ron Baird.

1) Minutes of the previous meeting were approved.

2) Financial Report

a) RMLA— Lougene reported that there is approx. \$35,500. Reserves are/were designated as such:

Caring For Llamas and Alpacas Production costs	\$16,000
Research Reserve	\$8,000
Life Member Escrow	\$3,600
General Operations	\$7,384

All bills and accounts paid.

Motion by Lougene, Second by Bob, passed unanimously:

RESOLVED: Each year the Treasurer will take out 10% of the remaining life escrow and put into the General Fund at the beginning of each operating year.

b) RMLA d.b.a. Llama Legal Defense Fund — Bob reported that the response to requests for funds has been good; the fund has gotten lots of small, individual checks. Individuals have contributed more than organizations.

3) Membership

Our membership is where we were a year ago, but down approx. 150 from the end of last year. 1996 membership closed as of March 15, so the membership list could be published. Another postcard reminder mailing was sent out.

4) Insurance

Lougene reported that RMLA's Insurance Company, Goetz Co., had gotten a new carrier for our policy. The new policy is approx. \$80 less, for the same coverage. We need to list all our assets for them. Lougene & Julie will work on this.

5) Publications

a) Newsletter- Ron & Marie Hinds, the new Newsletter editors, addressed the Board, with their vision for the newsletter..

1. They would like 1 Board member to write an article for each issue about Board issues and what we're doing.
2. They want to promote sponsored events; who's in charge, how members can participate — who to contact, etc.
3. Timing of newsletter - mailed in time for date sensitive material.

The Hinds' said they have an enthusiastic committee of 9 people gathering articles, and they are forming an advertising committee. They want to expand the advertising base to include llama feed suppliers, etc. Another goal is to work back up to 6 issues per year.

Motion by Bob, Second by Linda, passed unanimously:

RESOLVED: The Board wholeheartedly endorses the editorship of Ron & Marie Hinds.

b) Special Edition Newsletter

It was decided to keep the same advertising rates as in the past, and print 2000 copies of the Special Edition newsletter this year.

c) Service Directory

The ads have been forwarded to Jo Riley for typesetting. Lougene will send a Thank You note to Erma Hast for her help collecting the ads.

d) Youth Manual

Lougene got a bid from a Castle Rock printer for reprints of the youth manual. The quote was \$1.30 per book, and he can print from the existing work. Lougene will check with a printing company in TX for another quote.

Cheryl brought up the point of the original intent of getting the youth manual turned over to the National 4-H Office. She suggested contacting Larry Fuller in Berino, NM, 505-882-7055 to see who to contact in the National office.

Linda & Lougene agreed to work on this.

The board agreed RMLA should keep the copyright on the manual (to control the information in it) and the ability to reprint a few of our own, if desired.

e) Fiber Manual

The Board discussed the progress of writing a Companion Fiber Fun Manual. Linda will ask Daryl Wood if LANA has a fiber manual, so we don't duplicate efforts.

Lougene suggested we write a letter to Sharon Beacham, Fiber Chair, saying the Board is still interested in working on this project, pending what we find out from the National Office.

f) Caring For Llamas & Alpacas book

Julie reported that, from Jan. 1 to date, \$2,772 has been collected from outstanding invoices (this includes both CFL and Youth Manuals).

Lougene made a motion, seconded by Bob, passed unanimously (with Julie abstaining):

RESOLVED: The RMLA Board thanks Julie for collecting this money owed to the Association.

Julie and Lougene have been working closely on revising the *Caring For Llamas* accounting and procedures. There is going to be a period of time when we are out of books, before the new ones come back from the printer.



The new edition went to press Monday, March 11. The authors have put a lot of work into revisions. The publications committee & Julie will work up policies according to industry standards regarding shipping policies, etc. to present to the Board for approval

Ron Baird, Research Chair, addressed the Board with a suggestion for money for advertising the new issue of CFL&A. Since the profits after expenses have gone to research, he suggested research should help pay for some advertising on a nation-wide basis. He proposed asking the approx. 30-40 other newsletter editors to run an ad for free, or in exchange for a CFL&A book for their libraries, auctions, or whatever, since it ultimately benefits llamas & research.

The Board agreed it's important that once money goes into research, it should stay there; don't pull it out for advertising. The proper way is to take money & put towards advertising first, before splitting it off to Research.

MOTION by Cheryl, seconded by Linda, passed unanimously:

RESOLVED: We will start with an advertising budget for the new edition of CFLA of \$1,000. If more than this is needed, the Board will review it again.

6) Credit Cards

Bob reported on his research into credit cards. First Bank of Douglas County had the most favorable terms, since RMLA has our other accounts there.

Motion by Cheryl, seconded by Linda, passed unanimously:

RESOLVED: RMLA will try accepting credit cards for 1 year, for all our functions (books, conference fees, membership, etc), through First Bank of Douglas County.

Bob will contact First Bank and do the application. The Board agreed it would probably be best if the credit card transactions went through a separate account, rather than doing automatic transactions into the RMLA General Fund.

7) John's Disease

Ron Baird summarized the 3/12/96 conference on John's, held in Ft. Collins:

The attorneys representing the Llama Legal Defense Fund were there, and several "experts" testified that the ban is unjustified. Harvey Moon, the recent head of USDA Experiment Station, reasoned out why llamas pose no threat. The National Park Service showed the only opposition to the information presented; they walked out early.

Everyone emphasized that John's occurs in filthy conditions, and the experience with the 4 llamas who have had the disease is that they die fast; they don't live long enough to shed massive amounts of the pathogen to spread it. Additionally, an animal with the disease would be too sick to be out packing.

The experts reported the Mt. Evans and Ganella Pass bighorn sheep herds have had John's for years, and the herd is still thriving.

Ron suggested we transcribe Harvey Moon's summation and send to RMLA members, and the other newsletters.

Ron reported that LaRue Johnson is going to the Reno, NV State Veterinarians gathering to summarize the Ft. Collins meeting for the vets.

8) RMLA Display

Bob stated that the display needs more, and bigger photographs (like 18" X 24") to draw attention to it. He suggested the photos be laminated, rather than mounting them on foam board. Laminating & updating the display will cost money. Bob will discuss the display with Jim Osmun.

9) Special Events

a) '96 Stock Show trophy sponsorship

Julie thanked the Board for sponsoring the trophy for Performance Grand Champion—she happened to be the recipient of the award!

b) Denver RV Show

Bob reported on the RV Show. He suggested in the future we ask the show management to keep our booth and the packing demo's together in the same area. He also suggested we have RMLA members who are commercial packers, with a real market interest, man the booth. We could try this next year, then the following year try to get free booth space since the llamas are such an attraction at the RV Show. Bob will discuss these and other ideas with the RV Show management

c) '97 Stock Show

Lougene stated that Jerry Dunn is going to apply to the NWSS Board for RMLA to sponsor next year's show.

d) St. Patrick's Day parade

There are 20-25 people committed to participate in the parade this year.

e) Intermountain Llama Classic- Logan, UT

Several Board members are planning to attend, so it will be announced that if any RMLA members have questions or concerns, they can talk to the officers present.

f) Estes Park

The entries are almost full already. The Superintendent plans on putting a ceiling on entries, so it will not be larger than last year.

g) CO State Fair

Lougene stated that the State Fair expects RMLA to pick up a lot of expenses for this show.

h) Taos Wool Festival

Lougene will pay the \$15 membership fee to the Mountain & Valley Wool Assn, and send the application to Sharon Beacham (fiber chair) to fill out.

i) Fairplay

Since Dee Goodman had said he & Karla were stepping back from chairing events & committees, the Board discussed several possibilities for chairperson. Julie & Lougene will continue to work on this.

Bob brought up the question, "why do we sponsor a show?" In the case of the Estes Park Wool Market it was originally to help get it started. Estes is self-supporting now.

The Board referred back to 1988 information- all events should break even, plus 10% to cover the ones that don't break even.

10) 1996 RMLA Conference

Lougene gave a report on conference committee activities. They have set the registration fee at \$160. Lougene said other association conferences make money, through the advertising in their conference notebooks.

The Board agreed we should ask the Conference Committee to add an advertising sub-committee, and add another person to the committee to handle notebook advertising.

Bob suggested we give the committee the 1988 guidelines and ask them to update the guidelines & re-submit them to the Board.

11) Library Policies

The Board discussed setting policies for overseas book shipments from the library. Since library use could be a benefit to overseas members, the Board doesn't want to prohibit them from using the library, out of fear the items will get lost. Therefore, the Board unanimously adopted the policy:

RESOLVED: The library will require a deposit for more than the value of the book on overseas check-outs.

Bob will ask the bank about foreign country credit card use.

12) Fiber Committee

Julie said Sharon Beacham and Karen Kinyon have moved the workday to process the CSU donated fleeces to March 30. The committee is working on putting together a booth and establishing guidelines for the RMLA fiber coop booth, which will debut at the Estes Park Wool Market.

13) Internet

Bob will put together a page of different options and mail to the Board.

14) RMLA Akron Phone Line Forward

The Board agreed to keep the silent forward to Julie's number going for another quarter.

15) Membership Survey

The membership survey showed a shift of interest to fiber and youth activities. Bob stressed the need for RMLA to keep activities up of interest to members.

16) Nominations

Lougene reminded the Board we need to get an article in the next newsletter about nominations for the upcoming RMLA election, Linda volunteered to submit an article.

17) Misc. Business

a) Bob reported that RMLA member Jonathan Blacher of Bozeman, MT wants to form an association, and wants to be a "chapter" of RMLA. He wanted to see the RMLA bylaws, so Bob forwarded them to him.

The Board agreed RMLA needs to support local marketing efforts.

b) Julie will mail Get Well/ Thinking Of You cards to RMLA members Jerry Lee, and Wilson & Lori West.

There being no further business, on motion by Cheryl, the meeting adjourned at 10:45 PM.



## RMLA Nominations

On pages 36 and 37 four people are outlined that have been nominated to serve this organization as a Board member. Its takes dedication, understanding, a little time, and your experience with lamas. It can be a rewarding adventure. Volunteer!

Yea, I know it's past the time for nominations, but.....

Two year term for Treasurer; one year term for Vice President; and President-Elect, a one year term followed by one year as President. Terms begin Oct. 15th.

Contact Craig Dierksen/Rosie DeLullo • P.O. Box 514 • Kiowa, CO • 80117-0514



# PRODUCTION SALE OVERLAND TRAIL LLAMAS

QUALITY BREEDING, PERFORMANCE, SHOW STOCK.  
BREEDING STOCK GUARANTEED. STUD SERVICE INCLUDED WITH FEMALES.  
MULTIPLE PURCHASE DISCOUNTS. TRANSPORT AVAILABLE.

## PRICED TO SELL



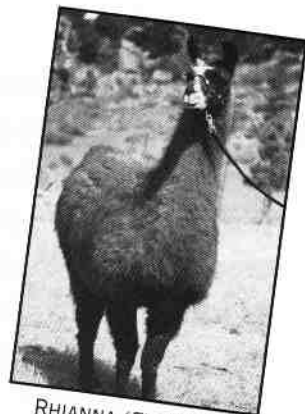
DIRE STRAITS (M, PROVEN)  
2/26/94  
MC HAMMER X OUIJA



BUFFALO SPRINGFIELD (M)  
3/9/95  
MC HAMMER X NECESSITY



PALOMA (F) 10/3/94  
PICANTE X PARFAIT



RHIANNA (F) 7/15/94  
ULYSSES X ROSEBUD



BONNIE RAIT (F) 3/25/95  
MC HAMMER X VENUS



NIRVANA (F) 4/1/95  
MC HAMMER X OUIJA



MADONNA (F) 12/24/94  
MC HAMMER X AMBROSIA



METALLICA (F) 9/5/95  
MC HAMMER X PEPPER

AND MORE, INCLUDING BRED FEMALES  
**COME VISIT! CALL 970-493-2335.**

MIKE & DALE PETTIGREW, 168 EMERALD MOUNTAIN COURT  
LIVERMORE, CO 80536 (35 MILES NW OF FORT COLLINS)

RMLA expended \$5,000 in research money during 1995 funding a soil erosion study conducted under the auspices of the University of Montana. RMLA was one of the largest single funding sources for this study, done in conjunction with the U.S Forest Service through its Aldo Leopold Wilderness Research Institute.

The study, entitled "*Influence of Llama, Horse, and Foot Traffic on Soil Erosion From Established Recreation Trails in Western Montana*", was designed to assess the relative physical impacts of llamas used as pack animals on trails. A burning question that all llama lovers face, when using their animals to better enjoy the backcountry and wilderness areas, is actual restriction or the threat of restriction by land managers, who unknowingly tend to apply the same restrictions to llamas as they do horses, mules, and burros. The study showed with a high degree of certainty that llamas had impacts similar to hikers and significantly less than horses. Its concluding sentence was:

*"Trail Managers may want to consider managing llamas used as packstock independently of restrictions placed on horses.*

The basis of the study was to take an established trail, divide it into segments, then measure the impact of horses, people, and llamas on those segments in dry and wet conditions. A trail that had previously had an extensive variety of use was se-

lected. It averaged a 6% slope over its length and was basically exposed to the elements, not having any tree canopy above it. This was considered a fairly typical trail for controlling the conditions of the study.

Once selected, the trail was divided into 8 blocks, 4 of which were "wet" and 4 of which were "dry". All were on a consistent slope and soil type, with all treatments randomly distributed within the blocks. Each block was then subjected to seven different user conditions: 1,000 and 250 horse passes; 1,000 and 250 llama passes; 1,000 and 250 hiker passes; and a control with no traffic. Once a traffic study began, traffic was applied continuously until the specified number of passes was accumulated. Equal numbers of uphill and downhill passes were made on each plot.

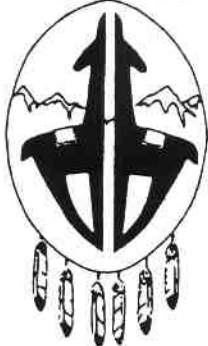
Measurements before and after use were made to determine the impact of the particular user type - person, llama, or horse - on the trail in terms of the soil erosion caused by the individual use. In general, dry trail use caused more erosion than did wet trail traffic. This may reflect the fact that a wet soil does not tend to migrate (erode) as much as the same soil when it is dry and easily scuffed or kicked.

Statistical analysis of the user impact, in terms of sediment yield, resulted in a conclusion that "Horse traffic plots produced significantly more sediment than either llama, hiker, or no traffic plots with (a) 95 percent confidence. Llama traffic

plots produced sediment yields similar to hiker plots and significantly lower than horse plots. Hiker and llama traffic plots produced greater sediment yield.... compared to the no traffic plots, but these differences were not significant....”

Under wet or dry conditions, horse traffic seemed to have the greatest impact on soil erosion potential. Trail roughness was enhanced by the horse use and reduced by hiker and llama use. Visual observations during the field work suggested that llamas do not disturb as wide an area of trails as do horses.


The study surmised that trail head management – access to trails in the first place – is an important method for wilderness recreational managers to influence the management of the much larger areas made accessible by those trails. It concluded that “While it is possible to say that llamas do not have greater erosion potential on established trails than hikers, these results should be considered together with the social implications of llama use on trails... and ;.. with future studies of llama impacts on campsites.”



**INDIAN PEAKS LLAMAS**  
*Since 1980*

*Herd Development*  
*Marketing Consultation*

Alaine Byers  
45640 Highway 72 • Ward, CO  
(303) 459-3245

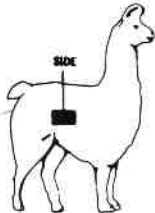


## Laserscan Technology

Provides Performance Data At the Right Price from Yocom-McColl Testing Laboratories

For Individual Animal Fiber Diameter Measurement:

- Select a 2" square sample from the side
- Prepare identification information with: Name or lot number, breed, sex, age and sample location.
- Place identified sample in plastic bag for shipping.
- Include date of sampling.



Costs:	Single animal test (\$5.00 prepaid)	
Volume rates:	<u>Number Of Tests</u>	<u>Price Per Test</u>
	1-25	\$5.00
	26-50	\$4.75
	50+	\$4.50
Services:	Faxing	(\$1.00 per test)

**Yocom-McColl Testing Laboratories, Inc.**  
540 West Elk Place - Denver, CO 80216-1823 - USA  
Phone 303-294-0582 • Fax 303-295-6944  
<http://www.ymccoll.com/>



CRIA CREEK RANCH  
303/526-1425



BOARDING  
BREEDING  
PACKING  
PETS

PAT HUGHES • 256 S. LOOKOUT MTN. RD. • GOLDEN, CO 80401

## ONE CALL DOES IT ALL

### STUD SERVICE:

#### PHF SOLOMON'S SEAL (aka BURRITO)

Sire of '95 NWSS Grand Champion Medium Wool Male  
and 1<sup>st</sup> and 2<sup>nd</sup> place Llama Fiber Class entries

Sire of '96 NWSS Grand Champion Medium Wool Female and  
'96 EPWM Reserve Grand Champion Heavy Wool Female

#### PERUVIAN PICACHO

'95 EPWM Reserve Champion Heavy Wool Male  
Sire of '96 NWSS Reserve Champion Heavy Wool Female  
Sire of three class winners at '96 EPWM

#### CADFAEL (\*El Fuerte x \*Cantilena)

First Place, '96 EPWM Heavy Wool Yearling Male

Reserve a breeding -- at a low introductory fee -- to our new Junior Peruvian Herdsire

**SHEARING:** Free Learn-to-Shear Clinics this summer. Please call for dates.

**TRAINING:** John Mallon clinics every Memorial Day weekend.

**SALES:** Mallon-trained youngsters sired by Burrito or Picacho. We also have several bred females, packers and sheep guards available.

303-666-9437 (Denver area) or 1-800-465-2567

John and Sharon Beacham, 2380 - 95<sup>th</sup> St., Boulder, Colorado 80301



**Pheasant Hill Farm**

Llamas  
for fiber,  
packing,  
and show

## TAOS FALL FESTIVAL AND TRADE FAIR

The Trade fair at the Martinez Hacienda features crafters, vendors, mountain men music, and food. It depicts life in Taos' early days. The Martinez Hacienda Museum is working with Alpaca Breeders of the Rockies and the New Mexico Alpaca Breeders Association to bring Alpacas to the event Sept. 28th and 29th. There will be an obstacle course and exhibition halter class event. It is happening in conjunction with the Taos Wool Festival at Kit Carson Park. The museum is working with the town of Taos to coordinate transportation between the two events. If you are interested in bringing Alpacas to Taos during this exciting fall holiday season, please contact Robbie Guidry (970) 482-0350.

Robbie Guidry



Blue Ribbon Alpacas & Llamas for Sale.  
The babies are here!

**Come see our newest fawn  
colored Suri addition.**

Ron & Marie Hinds  
9349 Tammy Lane  
Parker, CO - 80134-7511  
303-841-4889  
303-841-7635 fax  
RONLAMA@AOL.COM e-mail

Located just  
SE of Denver

**ALPACAS AND LLAMAS**

Support before, during and long after your purchase.

**Breeding \* Sales \* Fiber**

Visitors always welcome!

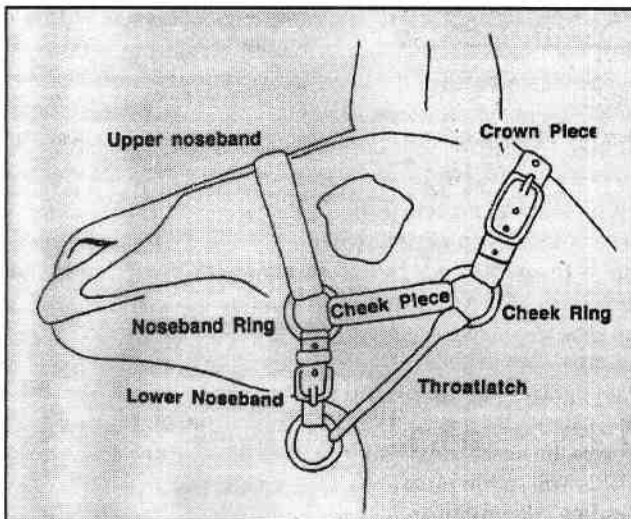
# You Be The TTEAM Trainer: An Exercise in Deduction (Part II)

By Marty McGee • 500 N. Guadalupe C366 • Santa Fe, NM • 87501 • 505•983•0775

(Part I was in the May issue.)

## Halter Fitting

The way a halter fits directly impacts on how well signals are transmitted to the llama. TTEAM techniques take a bit of a nontraditional twist on leading. We use a halter that features rings on the nose band and we attach a lightweight lead rope directly to the side ring of the noseband. This leading technique often produces a dramatic improvement in performance. The signals are more directly indicative of what they actually mean and we find that the typical llama foot plant is often short circuited. A lead rope hooked to the ring underneath the chin sometimes encourages resistant behavior based on the signal and the direction of pull. In order to use TTEAM leading techniques (covered more fully in the next column) you must first pay close attention to the way your halter fits. A properly fitted halter is essential to TTEAM leading techniques. In addition to being an important tool for communication a properly fitting halter may save your



llama's life. If there is anything worse than the death of a llama it is a death that might have been prevented. I received this letter from Peter Illyn who offered his tragic experience in the hope that it might save the lives of other llamas.

Dear Marty,

Jesse, one of my oldest and best llamas, died recently. He was an eight year old, skinny, ornery, spitting experienced packer. Jesse died in my unfenced back field where I staked him out after a week long pack trip. When I went out to check Jesse, I noticed he was laying down in an awkward position. The stake-out

line had wrapped around his back legs, tripping him and hog tying him down on the ground. As he struggled to get free, his halter pulled down over his nose and suffocated him to death.

Jesse was no ordinary llama. He was one of two llamas I used when I hiked a 1,000 miles along the Pacific Crest Trail a few years back. Jesse had been on the end of a stake-out line over 114 nights in a row. He had been tangled in stake-out ropes many times. I've even seen him walk around a tree until his head was pressed up against the trunk, chewing his cud, waiting patiently to be rescued.

But this time Jesse died and I'm to blame. I had him in a loose fitting halter, ignoring the proper halter fitting message that I've heard through your seminars. The halter pulled over his nose as he struggled to free his back legs. After setting the record for llama packing, Jesse died on a level field in his own backyard, 100 feet from the house. I feel like the parent who ignored the car-seat laws and suddenly has a dead child.

Jesse was a good friend and I loved him greatly. We hiked many a mile together and shared many a sunset. If there was any way I could change what happened, I would. Jesse's death was a tragedy, because it didn't have to happen. I honestly believe that with a properly fitting halter all Jesse would have suffered was a little indignation. I've enclosed the halter for you to look at. Keep up your fight for proper fitting halters.

Sincerely,

Peter Illyn

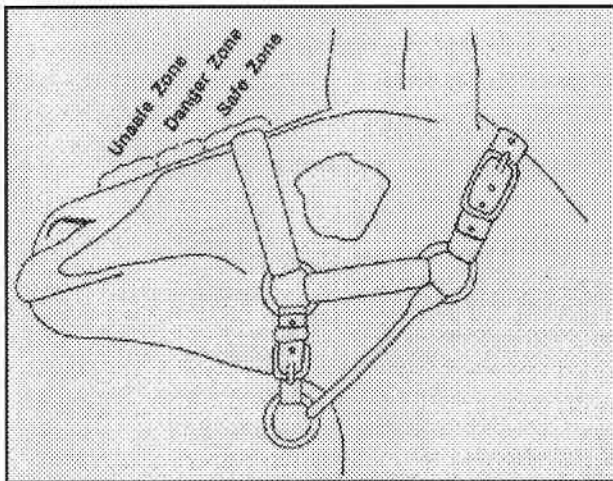
The halter that Peter showed me was a common style of llama halter and was not itself the problem. The issue is not what type of halter you select but how it fits. Many llama owners take the halter for granted and often don't analyze how a halter works or how it fits. Many owners believe that if it goes on the llama's head- it fits. When the llama phenomenon first began it was frustrating to find a halter, any halter, that would remotely fit. Many people had their own halters made or used modified sheep, or foal, halters. Now the reverse is true. It is equally frustrating to try to pick and choose from all the types of halters out there. When you are halter shopping the three main criteria for assessing halters in order of importance should be safety, comfort and effectiveness for communicating signals to the head.

In my travels teaching clinics I see a whole lot of halters that either don't fit or fit marginally. A properly

proportioned llama halter will allow the handler to give precise signals to the head and, at the same, time allow the llama to ruminate and even yawn without interference. Very often llama halters are put on as in sliding a ring on a cone. The halter is put on the nose until it stops and won't go up any further, then the crown piece is buckled. This does not allow for normal movement of the jaw or mouth and results in a halter that fits too far down on the nose bone. No matter how carefully you introduce your llama to the concept of being haltered, if the halter feels like a pair of pants that are too short in the rise, your llama will begin to avoid the halter.

**The Danger Zone:** A llama's nose bone does not extend very far down the nose and drops off very sharply toward the end of the nose. A llama's head is much smaller than a horse's and, therefore, a llama halter must be adjusted much more precisely than that of a horse. It is very important to adjust a halter carefully to avoid pressure on the cartilage or soft tissue. Such pressure could cut off the llama's ability to breath through his nose- exactly what happened to Jesse.

I believe that from the llama's perspective there are three regions on his nose: the safe zone (green zone), the unsafe zone (red zone), and the danger zone (yellow zone). Many times handlers adjust a halter so that it is resting on the part of the nose I call the danger zone. When the noseband of the halter is placed here, the



llama constantly feels that the halter is about to slip off the bone and cut off his airway-and in fact it can especially when the llama is staked out. In addition to being dangerous, a halter that fits this way can lead to behavioral problems that on first blush do not seem to have anything to do with the halter. Difficulty leading, lying down, spitting and bolting, are a few of the behaviors I think are connected to improperly fitted halters.

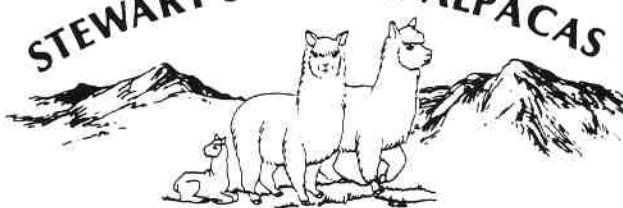
The nose band on many halters does not include enough adjustability to allow them to be worn close enough to the eye to be in the safe zone. On many larger halters, when the nose band is large enough the cheek piece is so long that the crown piece slips down the neck and interferes with the effectiveness of the halter as a means of communication. If you tighten this type of halter so that the crown piece will be up behind the ears where it is supposed to be, the stiff, and too long, cheek piece forces the nose band down into the danger or unsafe zone.

A well-fitted halter will stay in place once it is adjusted under all but the most adverse leading circumstances. The nose band should have enough adjustability to be worn in the safe zone with two fingers of slack. Two fingers of slack means that two fingers can be placed next to each other inside the nose band when it is properly adjusted. The crown piece should ride behind the poll, just at the base of the ears with one finger of slack and stay there even if the llama has no neck wool. A fleece lining inside the nose band is no substitute for proper fit. Fleece lining on a nose band that is already tight only makes it tighter.

My preference in halters are those that have a wide range of adjustability in the nose band coupled with a short cheek piece and one in which the throatlatch and the nose band travel through the same ring under the chin. The most common adjustment I make on a halter I feel is improperly fitted is to loosen the nose band a hole or two and tighten the crown piece to take up the slack. The net effect of these adjustments is to cause the nose band to slide further up toward the nose on firmer bone. From a safety standpoint I would rather err on the side of adjusting the halter too close to the eye and a tad snug in the crown piece than to allow the nose band to slide too far down the nose especially if you intend to stake your llama out. Next time using TTEAM leading techniques for more effective refined leading.



**STEWART'S ROYAL ALPACAS**



CHUCK & HELEN STEWART  
(719) 275-2701190 STEINMEIER  
CANON CITY, CO 81212



# VILLAZON

Macho Macho (Macho Camacho) X Villa D'Este

BONE



PRESENCE



FIBER

EARS

Villazon will be available for service in Woodland Park Through September. A 1996 booking insures an introductory fee of \$500 for future bookings as long as Villazon stands at our ranch. He's already been matched with a Texas, grand champ! Take a look-at him or other young males and females from various quality bloodlines. Call now for directions!!!



## HICKORY HOLLOW RANCH HICKORY HOLLOW FIBERWORKS



Bill and Patti Moore      Route 1, Box 8,      Bastrop, TX      78602      Tel 512-303-6909

DISCOUNT PRICES ON WHEELS AND LOOMS!! LOUET MINI COMBS (\$44, \$65), 5 PITCH COMBS (\$125) for cleaning, blending & dehairing llama wool. Gaywool dyes. Loet, Schacht, Timbertop, Indigo Hound.

## Stillwater Minerals

Vitamins & Minerals Specifically  
Formulated for Llamas and Alpacas

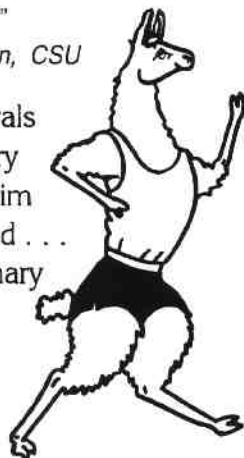
**Standard of the Industry since 1989**

Look What Others Say:

"They sure like Llama-Min  
better than my stuff."

*Dr. LaRue Johnson, CSU*

You will find Stillwater Minerals  
being used at CSU Veterinary  
Teaching Hospital . . . Dr. Jim  
Vicker's Select Peruvian Herd . . .  
Iowa State University Veterinary  
Hospital and, of course, Dr.  
Johnson's own llamas.



Post Office Box 1189 • Lyons, Colorado 80540

### Llama-Min 101: Original Formula

Balanced **Vitamins A, D<sup>3</sup>, & E** plus **Calcium, Phosphorus** and **Zinpro 100**. This is the original formula based on llama nutritional research at CSU.

### Llama-Min 102: Stress Formula

Has higher levels of **Selenium** and **Vitamins** plus **Electrolytes** for heat stress. Ideal for the working llama or llamas in hot or humid climates.

### Llama-Min 103: Super Wool Formula

Has **DL-Methioine, Copper, B<sup>12</sup>**, and **Electrolytes** for fiber quality. Recommended for alpacas and llamas looking for higher wool production.

### Llama-Min 104: Balanced for Alfalfa

**Calcium** and **Phosphorus** balanced for alfalfa, with the highest levels of **Vitamins A, D<sup>3</sup>, & E** and **Selenium, Zinpro 100**, plus **B-Plex 5** (a proprietary ingredient similar to Brewer's Yeast). Use during the winter or when your feeding program includes alfalfa. Also use when conformational problems arise due to high **Calcium** levels or rickets due to **Vitamin D** deficiency.

Prices start at \$19.95 and we pay all UPS charges. Send us a check after your Minerals arrive. To order, or if you have any questions as to which Llama-Min will work best for you, please call Bob, Jo or Brad Riley

**800•255•0357**

# The Unification Effort.. *Where it stands at this point in time.*

The Lama Steering Committee – Jack Moore, Chair

**A**t the January 1996: *Llama Assembly*, the Unification Working Group (UWG) gave its considered report including recommendations for subsequent action. The UWG asked that a Steering Committee be appointed whose charge would be to organize a Congress that would focus on the creation of a new, unified organization based upon the merger of the ILA, the ILR and ALSA as outlined in their (the UWG) *Final Report*.

Their recommendation that such a Steering Committee be comprised of officers of ILA, ILR and ALSA was expanded by consensus of the membership of *Llama Assembly '96* to include representatives from LANA, RMLA, AOBA and CLA as equal participants. This expansion changed the projected Steering Committee from a three-member base: two of who had already expressed support for merger to a seven-vote committee. Each organization opted to have an alternate member, except AOBA, comprising a 13 member committee. Of the four additional member organizations, three had yet to commit to the proposed merger. The CLA had stated their stance as pro-merger.

In February of 1996, the Unification Steering Committee had one telephone conference call. The decision was made to meet face-to-face at a date when each of the seven member organizations could be represented by at least one person - no easy task! It was also determined that an operating fund would be established with each member-group contributing \$300.00.

The Committee met in Reno the last weekend in March with six of the seven-member organizations represented (CLA was unable to attend at the last moment). Present were ALSA - Tony Rollins, AOBA - Allan Dewald, ILR - Kathi McKinney, ILA - Jack Moore, LANA - Nelson Leonard and Marilyn Milton, and RMLA - Linda Kyriopoulos and Bob Riley. Each organization represented could express one vote regardless of representation.

To avoid being confused with the Unification Working Group, the Committee elected to

refer to itself as "The Lama Steering Committee" (TLSC).

To provide direction, the Committee adopted the following as its interpretation of its mission: "The Committee agrees that there is a need to continue, enhance and expand ongoing cooperation within the lama community.

Following extended dialogue, the Committee came to the conclusion that if the UWG's Final Report statement, "Without the cooperation of the ILR there will be no unification", was accepted at face value a negative TLSC vote on the merger of ILR, ILA and ALSA would effectively terminate the current pursuit of unification and this group could adjourn.

The consensus of the Committee was that industry unification based upon the premise of merger of the three major organizations was not possible at this time.

TLSC felt there were many factors leading to such a conclusion, preeminent among which were widespread distrust hostility, and printed and widely-circulated charges and countercharges that seriously and negatively affected what was proposed as "unity". It is difficult to recall any other issue that has divided this community as has, ironically, Unification"!

The Committee did feel, however, that it was critical that continued efforts at closer industry cooperation be pursued leading to a positive and attainable format that, while perhaps not as revolutionary as "merger", could place the components of the industry closer to the goal of unity sought by most.

*If not "merger", then what?*

With the "window of merger opportunity" lowered, discussion centered on clarifying "needs" or problem areas facing the lama community, relying heavily on groundwork provided by the Strategic Planning Group

*Continued on page following.....*

# GREAT WESTERN ROUNDUP



LLAMA AUCTION

SATURDAY, MAY 24, 1997

5:00 PM

Cache County Fairgrounds

Logan, Utah

during the  
Intermountain Llama Classic

***NO CONSIGNMENT FEES!***

Only 10% commission

Limited space available. \$50 non-refundable fee per llama reserves your place in the sale; that \$50 will be deducted from our 10% commission upon sale of your llama. No sale? All we keep is your \$50, no other commission.

**YOU SHOULD PROFIT THE MOST FROM THE SALE OF YOUR LLAMA,  
NOT THE SALE ORGANIZER!**

***FOR CONSIGNMENT INFORMATION, CONTACT:***



Steve Kyriopoulos  
2680 West 5700 South  
Mt. Sterling, Utah 84339  
(801) 245-3529

*Unification, cont.*

and the Unification Working Group Concentration now focused on problems negatively impacting the lama and its owner problems that had a fighting chance of resolution. Could these needs or problems be best served by, cooperative and unified efforts of organizations on local, regional, national and special-interest levels?

The perennial problem of consistent and renewable funding of (1) contesting governmental issues directly affecting the lama and its owner, and (2) research necessary for the health and welfare of the lama was the number one problem identified by TLSC. In the early years, funding of such universal endeavors was assumed to be the responsibility of the ILA, with support in varying degrees from other organizations and individuals.

In retrospect, "a bake sale" approach to the funding problem was regularly employed, with varying degrees of success, on a reactive basis ... in response to erupting crises. This is NOT to be interpreted as sarcasm in reference to the heroic efforts of individuals and groups who fought the brush fires and battles of the lama world over the years.

The Canyonlands issue reflects this historical approach to crises funding. We were very fortunate that "Canyonlands" erupted proximate to LLAMA ASSEMBLY '96, which provided a platform for presentation with a responsive audience representing concerned organizations and individuals. That if the Canyonlands issue (the llama as an alleged disease carrier) had to be presented to the entire community by mail or newsletter? Instant support generated at the ASSEMBLY enabled the appointed Task Force to move quickly and effectively with necessary financial backing and direction.

At this point in the Reno discussion, one member proposed that a national "Lama Trust Fund" be established. A Trust Fund with all organized entities within the community sharing in consistent and renewable funding which would be made available for the two identified major areas of need ... response to pertinent governmental issues and aggressive pursuit of necessary research. Brilliant idea! Where would we be now if such

Trust Fund had been established and successfully administered ten or fifteen years ago? Some say it has been tried and it didn't work. If this is true: then let us profit from history, find out why there were problems what worked and what didn't, then make certain the attempt is assiduously made to not repeat errors and to pursue successes.

Committee members representing ALSA, ILR, ILA, LANA and RMLA agreed to address the concept of developing a workable national Lama Trust Fund. All the members further agreed that all Lama organizations would contribute to the Trust Fund on a fair and equitable basis. The actual formula to determine the level of contribution that would be fair and equitable is one of the many tasks to be addressed in the coming months. This was a major and very positive step forward confirming the underlying willingness of all lama organizations to work together!

In addition, three other Committee members will focus on the governance of such a fund. How best can the individual owner/breeder be represented? Shall assets be invested? How can such a Fund be administered without creating "just another" level of organization?

In addition to the development of a national Lama Trust Fund and its governance this Committee is addressing other issues that will be a part of the proposal to be presented at the '97 LLAMA ASSEMBLY. These issues are: lama research, governmental issues, expanded concept of LLAMA ASSEMBLY, autonomy of local, regional, national and special-interest groups, and the relationship between the alpaca and llama communities.

It is TLSC's goal that the proposal be in the hands of all known organizations and other lama-related entities by the end of November. Representatives from such groups will be asked to attend LLAMA ASSEMBLY next January, prepared to speak to the proposal reflecting the desires of their membership.

While this proposal will not include the merger of the three major associations sought by the UWG, it will be a serious attempt to strengthen and increase the level and spirit

Unification, cont.

of cooperation within our community. This Committee wishes to present a proposal that, when implemented, has the potential to improve or resolve at least those areas of concern addressed. It wishes this proposal to be attainable..... something that will not require further study nor the formation of another committee. Something that can be accomplished.....NOW!

The Lama Steering Committee wishes to be a part of the evolution of a united lama community. It feels that this considered approach can be a major step towards that goal. It will require nothing that anyone may not care to give. The proposal will not demand conformity nor require blind obedience. What it will require is a willingness to work together and

a spirit that is both positive and support of one another.

By now, the reader has possibly developed one of three reactions to the preceding: (1) this is a positive step forward, (2) this will never work and is a waste of time, or (3) I think I'll wait and see what is presented in January before I make up my mind.

The Committee trusts that the lama community adopt an open frame of mind towards its efforts and withholds final judgment until presentation of the proposal next January. In the meantime, if you have comments or suggestions, call any of the members of this Committee.

Thank you

---

### **The Lama Steering Committee:**

<i>Name</i>	<i>Address</i>	<i>Fax</i>
Fred Bauer	7765 Valley Ford Road Petaluma, CA 94952	707-763-5690
Allan Dewald	6790 Nameless Cave Road Rapid City SD 57702-9448	605-348-1809
Dan Goodyear	214 Station Road Robesonia, PA 19551	610-488-6666
Kent Govett	Site 2A, Comp 16, RR 2 Kamloops, BC Canada V2C 2J3	604-573-5581
Linda Kyriopoulos	2680 West 5700 South Mt. Sterling, UT 84339	801-245-3529 (call first)
Nelson Leonard	Post Office Box 708 Eagle Point, OR 97524	541-826-6115 (call first)
Vern Lillies	25455 32nd Avenue Aldergrove, BC Canada V4W 2A2	604-857-0199
Kathi McKinney	71 Schafer Meadows Lane North Montesano, WA 98563	360-249-5089
Marilyn Milton	4480 Pioneer Road Medford, OR 97501	541-535-6931
Jack Moore	5308 Stagecoach Road Somerset, OH 43783	614 -743-1092 (call first)
Bob Riley	Post Office Box 1189 Lyons, CO 80540	303-823-0643
Tony Rollins	G-769 SR 109, Route 1 Hamler, OH 43524	419-267-5298
Jodi Sleeper	Post Office Box 13 Miami, NM 87729	505-483-5083 (call first)

# Cache La Poudre



## MINERALS

Call Now to Order  
or receive a brochure:

800-758-0825

970-493-2335

## Insure Your Lamas' Health for Pennies per Day!

Cache La Poudre Minerals are free choice supplements  
formulated specifically to balance your lamas' diet.

Includes these essential elements:

- ★ **Selenium**—recommended amount for selenium deficient areas
- ★ **Vitamin D3**—necessary for bone growth and tooth structure
- ★ **Zinc**—for immune function and healthy skin and fiber
- ★ **Vitamin E**—for selenium absorption, fights stress and disease

**ECONOMICAL!** Costs less to feed per day than other  
free choice minerals or pellets with comparable guaranteed analysis.

### Supplement #1:

Diet: Late or non-irrigated summer, fall,  
or winter pastures; feeding grass hay.  
Contains a 2:1 calcium/phosphorus ratio  
and additional Vitamin E.

25 lbs, \$29    50 lbs, \$55

### Supplement #2:

Diet: Late or non-irrigated summer, fall,  
or winter pastures; feeding alfalfa or a  
grass hay low in phosphorus. Contains  
additional phosphorus and Vitamin E.

25 lbs, \$29    50 lbs, \$55

### Supplement #3:

Diet: Spring or irrigated pastures; feeding  
alfalfa or a grass hay low in phosphorus.  
Contains additional phosphorus and  
recommended basic level of Vitamin E.

25 lbs, \$24    50 lbs, \$45

**NEW 200 lb. PRICE: #1 or #2: \$198, #3: \$162 • PLUS SHIPPING**

## LLAMAS FOR SALE



*Providing Treatment and Education Services to Children and Families*

ESTABLISHED 1927

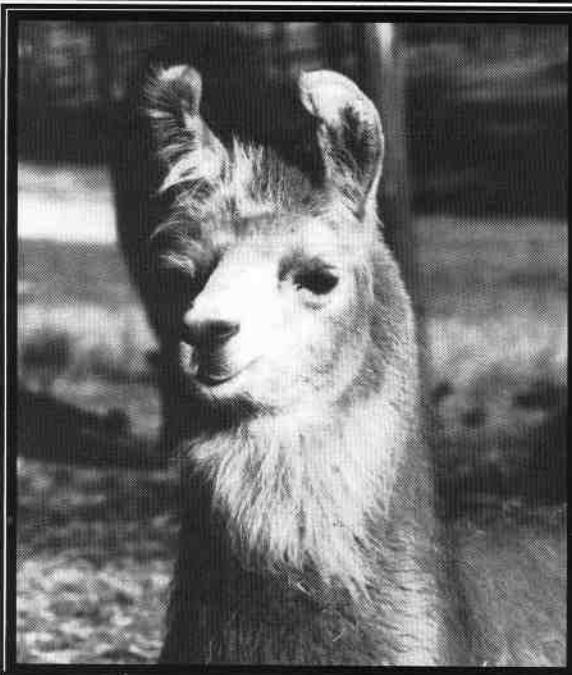
2 - 6 YEAR OLDS, REGISTERED, PACKERS, GOOD 4-H PROJECTS, WELL MANNERED, "RUSTY" &  
"SOUPIE" \$1,000 EACH OR \$1,800 FOR THE PAIR.

1 - 7 YEAR OLD, REGISTERED, GENTLE, EXCELLENT 4-H PROJECT, LIGHT PACKING - "ALLADIN" \$500

1 - 8 YEAR OLD, BLACK, REGISTERED, MALE, SMALL AND STURDY. \$700

1 - 6 YEAR OLD, BIG BUILD, HANDSOME FELLA, NO PEDIGREE, \$800

LOCATED AT LARKSPUR, CO • DAYTIME (303) 681-2400 • EVENINGS (719) 481-4516



Select your llama with confidence. We offer our support long after you take your llama home.

**Little Big Man** is one of the Prize Winning offspring of our champion herd sire, **Five-Star**. Our small size gives our llamas the advantage of more hands-on care. They are all friendly, well-mannered and manageable. We offer a variety of colors, styles and ages. Visit and see for yourself the special qualities in the llamas we have for sale.



## Nellie Newcomer asks: "Can you put Llamas and Alpacas together?"

By Ron Hinds • Serendipity Farm • Parker, CO • (303)841-4889

Generally, you can place llama and alpaca females in the same fenced area. Adult males on the other hand, should not be put together. Adult Alpaca males can be injured by their larger cousin. Before they are weaned, male llamas and alpacas can run together.

Female llamas and alpacas in the same field stay in different parts of the field when grazing. Typically, you'll find all the llamas together in one part of the field and all of the alpacas in another part.

Crias are not affected either. Llamas and alpacas are curious by nature, and each will occasionally walk up and sniff each other's cria. Llama and alpaca females are generally very gentle and will not intentionally hurt another llama or alpaca. You may get one to spit at another's cria. After all, the

crias are curious too.

There have been individuals who indicate the disposition of the alpaca is better if not in with llama females, but I believe this is relative to the disposition of the female llamas.

*There have been recent reports about llamas that have died due to a blow on the head because of them bolting while inside a trailer (or exiting a trailer).*

*It is a good practice not to work with llamas (or alpacas) in an enclosed trailer. Carry portable panels and use them. Build a restraint chute in the Caring for Llamas book (new or old edition). Get some old carpet and wrap it (a couple of times) around all the cross members.*

*Accidents will happen, be very careful loading & unloading!*

# Electronic Sources of Information on Llamas and Alpacas

Karen Conyngham • Barton Creek Llamas • Austin, TX • Corporate Librarian • Motorola, Inc.  
72040.3361@compuserve.com

There's a vast amount of information on all topics "out there" on the Internet which most people access via the World Wide Web. Nearly all Internet Service Providers (ISPs) include a Web browser (Mosaic, Netscape, Webcrawler, etc.) as part of their subscriber package. All you need to get connected to the Internet is a PC (486 or higher) or Macintosh with a modem (14.4 baud or higher is nice) and an ISP who gives you a local dial-up or 1-800 number for access.

Camelids have had a presence on the 'Net for well over a year and new sites are being added daily. These range from comprehensive sites such as LlamaWeb to people who just put a photo of their pet llamas or alpacas on their homepage. You can find llama sites by using the "search" function of your browser or use one of the commercial search engines; my favorite is AltaVista (<http://altavista.digital.com/>) or enter the Universal Resource Locator (URL) of the site you would like to visit. Here is a list of the major sources of camelid information on the Internet as of April 1996:

## Alpaca-Llama Listserv

This electronic discussion list covers all aspects of camelid care, training and general chat. Over 200 people are subscribed to the list and they range from experienced breeders to folks who are still dreaming of owning a llama or alpaca. To join the list, send an email message to [majordomo@maine.com](mailto:majordomo@maine.com). The Subject line should read "Subscribe" and in the body of the message put: Subscribe alpaca-llama <your name> (you do not need to type the brackets). You will receive an email telling you that you are subscribed to the list and giving the rules for posting messages. Expect at least 25+ messages per day! For more information, send email to [ctalpacas@maine.com](mailto:ctalpacas@maine.com) (Cindy & Tim Lavan, Chase Tavern Farm Alpacas). You do NOT need a Web browser to join this list, just an email address.

## Alpaca Net

<http://www.alpacanet.com/>

This web site includes files about alpacas, their fiber, investment potential, directories of products and ranches, etc.

## LlamaWeb

<http://www.webcom.com/~degraham/>

LlamaWeb contains many llama information files: llama related services, association listings, events and conferences, a list of llama books in print, medical references from MedLine, ads for llama farms with lovely color photos, links to related Web sites and much more.

## LlamaLedge

<http://members.aol.com/LamaLedge/LLF1/llf.999.html>

Sharon DaDalt, owner of Llama L'edge Farm in Auburn, NH has established this Web site that has a unique Medical Index of citations to articles from popular lama publications such as Llamas Magazine, Llama Banner, Llama Life, the GALA Newsletter, etc. Over 100 topics of interest on lama health and medicine, as well as herd management, are included. These journals are not indexed by any other database. This site is updated regularly.

There are many more than these; spend an hour or so and visit llama and alpaca sites around the world!

I remember seeing a recent search someone did that said there were 27,000+ entries on the internet that listed llamas or alpacas.

Hook up to Yocum/McColl's web site. In addition to a great deal of fiber testing information, they have some wonderful links to "Fyberspace". <http://www.ymccoll.com/> ed.



Breeding for Quality  
Peruvian and Chilean Stock

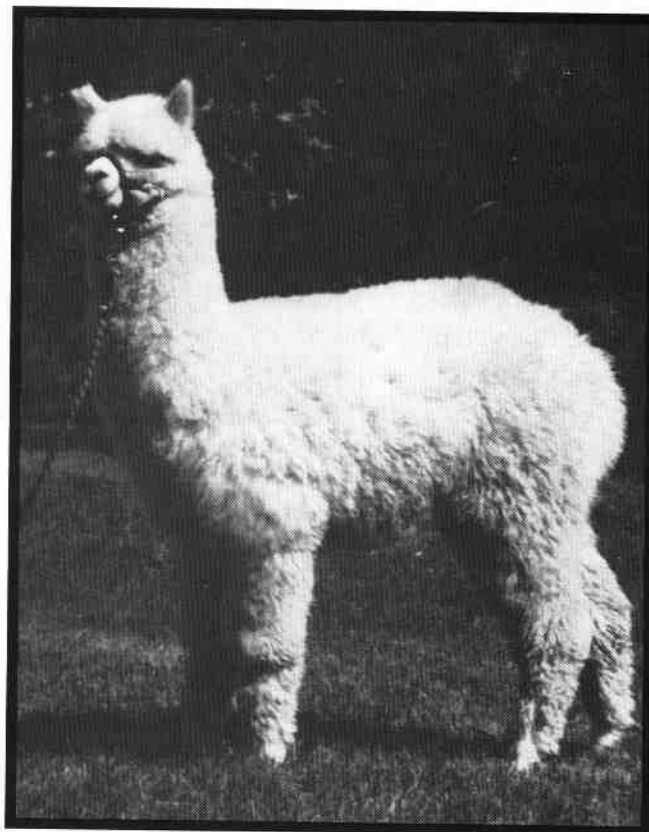


**Mile High  
Alpacas**  
"ALPACAS R US"\*

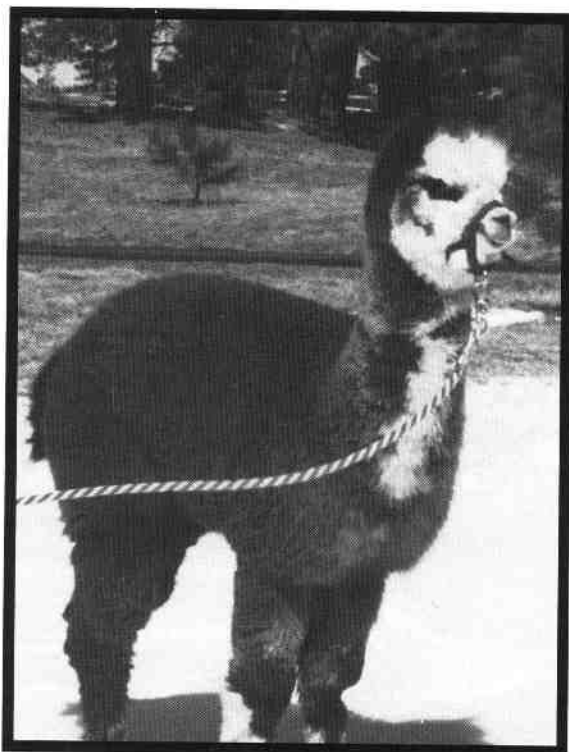
Frank and Sharon Loner  
12818 Woodland Trail  
Parker, CO 80134  
(303) 840-5250



Peruvian Maruja



Peruvian Sir Titus



Bonnie Brae

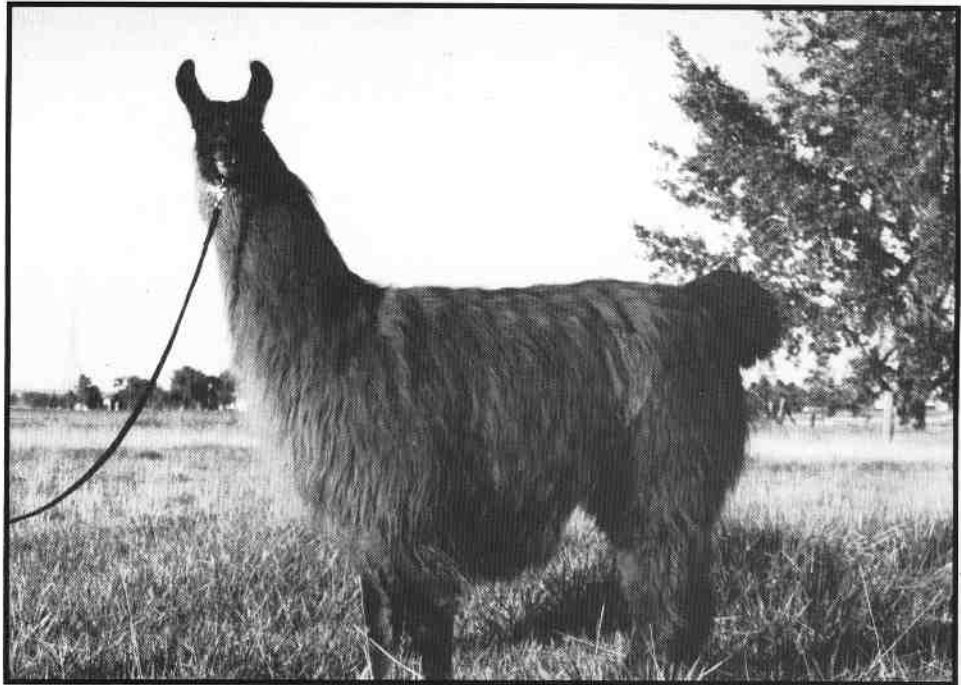
\* **"WE HAVE ALPACAS  
FOR YOU TOO!"**

Come see our beautiful herd of full Peruvians and Chileans, pregnant females and weanlings. Expecting this September..... full and cross Peruvians sired by Peruvian Antonio, Peruvian Drambuie and Peruvian Oro.

The Hartsoughs and Redenbargers have a cup of **JAVA** for you!

## GLL JAVA

'96 Grand Champion  
National Western  
Stock Show  
and  
sire of '96 Grand  
Champion Female  
National Western  
Stock Show



Call either ranch to reserve your breeding now!



Jan & Jim Redenbarger  
303•642•0140

*Llamarage*

Mary Beth & Joe Hartsough  
970•785•2463

GOLDEN  
RIDGE



LLAMAS

Mark & Sandy Fisher  
Golden Ridge Ranch  
29228 Sunset Trail  
Pine, CO 80470-9415

303 838 9702



Ron & Marie Hinds  
9349 N. Tammy Lane  
Parker, CO 80134-7511  
(303) 841-4889 Voice  
(303) 841-7635 Fax  
RONLAMA@AOL.COM  
e-mail

Breeding  
Sales  
Fiber

One of the most feared expressions  
in modern times is "The computer  
is down."

*Norman Augustine*

# Kids and Llamas in the Park

By Jerry Dunn • Bear Track Farm • Llama Training Center • Golden, CO • 80403-1707 • (303)277-1129

**A** long about March the winter begins to wear on my creative abilities to keep the Bear Track Farm Kids and their llamas busy and challenged. Frequently I come up with ideas that cause the kids to roll their eyes and accuse me of being a bit “touched” in the head. This time I decided to invite 65 kids and their animals for a lunch hike in the Wheat Ridge green belt on a Sunday morning in April. Maps of the area and a list of personal needs were mailed and I waited for responses.

We decided that there could be at least three different levels of skill and experience for the handlers and the animals. We spent a couple of days exploring and deciding on appropriate trail loops. The kids laughed about some of their first experiences in the park and based their decisions for the trails on what they had learned first hand. The trail loops were designed to parallel each other so that we were in shouting distance of one another. Bridges, mud and water crossings, low

branches, jumps, creative obstacles (play grounds, bicycles, dogs, ducks and geese, and families with kids) were included in each loop with varying degrees of difficulty. Safety was a big consideration because we had no idea who would be coming on the hike. We wanted everyone to have fun and experience success during the day.

Sunday morning, April 21 arrived and 30 animals (llamas and alpacas) and 50 people arrived in the parking lot at the green belt. My kids looked at me with a confirmed “you are touched”! Releases were signed and a discussion was held with the group of the day’s itinerary and safety procedures. We divided up into three groups of beginner, intermediate and advanced. The Bear Track Farm Kids led the intermediate and advanced groups and I led the beginners.

The groups moved along smoothly with the usual delays for poop stops! The animals and humans seem to be having a fun time. My group



Photo by Debby Rothwell

August, 1996 - RMLA

had stopped for a major poop stop when we heard uncontrollable laughter and screams coming from an area in the trees that had to be a water/mud crossing. A young lady, who's name I promised not to mention in this article, slipped into the mud as her llama vaulted across the stream to the opposite bank, towing her into the black goo where she lost her shoe! While her group fished through the slime looking for her shoe, one of the adults ran back to her van to get



**Lunch..... (real) cold sandwiches.**

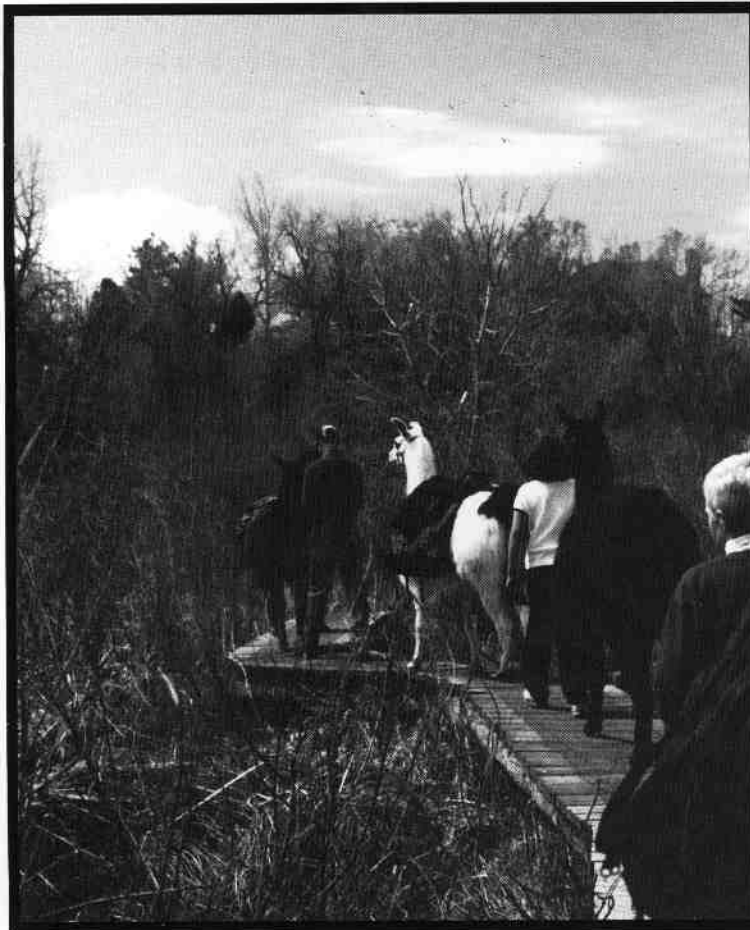


Photo by Debby Rothwell

another pair of tennies. The shoe was retrieved and dropped into a plastic bag!

Lunch was out on a too cool, windy point where we all nearly froze to death. The animals were staked out or held closely for warmth. We all huddled together sharing our lunches and shared in warm conversation. We soon collected ourselves and headed out on the return loops.

Back at the trailers we all agreed to do it again next year.

**DID YOU KNOW .....**

The first get-together of llama owners in the Rocky Mountain area was called by Bobra Goldsmith and Howard Kerstetter and held in Aurora, Colorado, on April 17, 1982. There were 41 people in attendance. Howard Kerstetter was elected President, Bobra Goldsmith Vice-President, and Erma Hast Secretary-Treasurer. By-Laws were drawn up.

# DO YOU HAVE A LAVENDER LLAMA?

By Sharon Beacham • Pheasant Hill Farm • 2380 - 95th St. • Boulder, CO • 80301-4937 • (303)666-9437

Lavender, rose, coral, green. Picture your light colored llama or alpaca's fiber transformed into a rainbow of colors. It's quick and easy to do using Kool Aid. Raw fiber and roving can be dyed with this method. Here's how:

Use a wide-mouth glass jar, any size from a quart to a gallon. Pack clean, damp fiber to within two inches of the top of the jar. Put three different colors (flavors) of unsweetened Kool Aid, equally spaced, on top of the fiber. Use 1/4 teaspoon of each color for a quart jar, 1/2 teaspoon each for a gallon size. (You can also use 3/4 to 1 1/2 teaspoons of one color.) Do not mix the colors with the fiber. Pour warm water down the side of the jar, without disturbing the Kool Aid, until it covers the fiber. Screw lid on loosely.

Place jar, on rack, in a canning kettle and fill with water half way up side of jar. Bring water to a simmer and maintain for half an hour. Pour dyed fiber into sink. Rinse, without agitation, in several changes of warm water. Spread on rack or towel to dry. If there's no color left in the water,

you used the right amount of Kool Aid. If the colors are uneven, you may have packed the fiber too tightly in the jar. Ginger Ferris, who supplied these directions, has found this dye to be quite color-fast. For insurance, you could add 1/2 cup white vinegar to each quart of water used for the dye bath.

Food coloring can also be used to dye fiber, as well as natural substances like onion skins or marigold petals. These procedures are all safe because no toxic chemical mordants are used to bond the color to the fiber. Commercial dyes, like Gaywool or Procion, are available from spinning supply shops and are relatively easy to use. Follow their directions and safety precautions to the letter.

**Check out these publications from the RMLA Library if you'd like to learn more:**

*Spinning Llama & Alpaca*, by Chris Switzer. (Basic information / procedures for dyeing llama fiber.)

*Hands On Dyeing*, by Betsy Blumenthal and Kathryn Kreider

*Colors from Nature: Growing, Collecting & Using Natural Dyes*, by Bobbi McRae

"Solar Dyeing" articles, from *Spin Off Magazine*, Summer, 1993

"Dyeing Llama Wool" by Rebecca Abbott (article)

## TEAM TRAINING

*with Dale Pettigrew*

Cooperative, well-trained llamas and alpacas are a pleasure to live with and care for, and **are easy to sell!**

LEARN **safe**, non-forceful, effective techniques to teach your llama/alpaca to halter, lead, load, pick up feet, pack, be groomed or medicated without restraint.

I specialize in changing problem behaviors.

Private instruction for owners and/or llamas at your ranch or mine.

Host a one- or two-day Clinic (6-10 participants). You get the instruction for free, and you get folks to your ranch to see your breeding program.

Lectures, demonstrations, seminars available for your local/regional llama gathering or conference.

Call Dale Pettigrew, 970/493-2335  
Overland Trail Llamas, Livermore, CO





# RMLA

# FALL CONFERENCE

# LONGMOUNTAIN

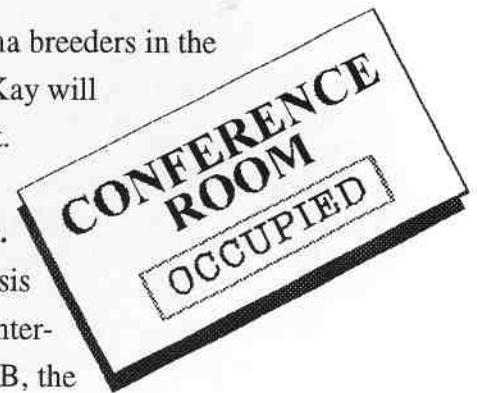


## CONFERENCE TOPICS AND SPEAKERS

- **Llamas 101:** with **Kay Patterson-Sharpnack** one of the founding llama breeders in the US and an instrumental person in the inception of the llama registry. Kay will also present a slide show at the Friday night Substantial grazing buffet.

- **Genetic Diversity and Surfing The Llama Internet** with **Dale Graham.**

With a Ph.D. in Biomedical Studies, Dale's research has become the basis for what is currently known about color inheritance in llamas. Dale's interest in computers and the Internet has led her to open the LLAMAWEB, the first Llama Internet site.



- **Heat Stress** with **Dr. Norman Evans, DVM.** Dr. Evans runs the Llama Wellness Service in Madisonville, Kentucky. He has been published in many llama magazines, including Llama Life, and brings a wealth of experience to our conference.



- **Ask Me Anything** with **Dr. Tim Thompson, DVM,** local veterinarian extraordinaire.

- **Marketing:** We have an exciting line up of high powered speakers to address marketing and the future of our llama industry. Starting with our key note speaker, **Terry Price** who has been involved long term with the llama community and was owner and editor of Llama Life. **Peter Illyn**, a marketing executive from Washington State, who has also walked 1,000 miles on the Pacific Crest Trail. **Susan Ley**, Marketing with Photography; **Darlene Vaughan**, Marketing Llamas Through Shows; and a Fiber Marketing Panel with **Maggie Johnson**, owner of Shear Delight Fiber; **Susie Smithers**, a starting member of the ORVLA wool committee and **Sandy Mubarak** who has developed workshops on "Innovative Marketing and Uses of Fiber" and "Setting Up A Fiber Cottage Industry"



# CONFERENCE - OCTOBER 3, 4 & 5 MONT, COLORADO

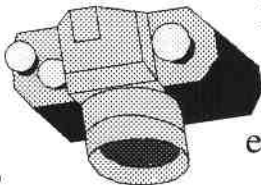
Registration Packets Will Be Mailed In August  
VISA/MC Accepted  
(Deadline is September 15th)

- **Fiber:** The conference will have a full schedule of fiber topics from Shearing to Processing to grading to Marketing, plus a Round Robin demonstration of spinning, locker hooking, weaving and dyeing, felting, knitting, hand and machine knitting. Expert speakers included in the fiber seminars are: **Maggie Johnson, Sandy Mubarak and Susie Smithers**. Also, participating are many local fiber enthusiasts including **Sharon Beacham, Chaney Clouch, Karla Goodman, Barbara Hance, Karen Kinyon and Sally Rucker**.
- Meet the authors of: **Caring for Llamas and Alpacas, Claire Hoffman, DVM and Ingrid Asmus.**



## WORKSHOPS

- **Photography with Susan Ley:** Creating the Perfect Llama Photo with nationally known llama photographer **Susan Ley**. As an expert in animal photography, she brings a wealth of information to her audience, but it is her enthusiasm and sense of fun that makes her presentations so enjoyable.



- **ALSA Show/Showmanship:** Learn from the best a combined 19 years of experience Class III ALSA Judges **Darlene Vaughan and Judie Hyder**.



- **A Packing We Will Go:** Participate with the Experts, **Charlie Hackbarth, Wes & Mary Mauz, Pat Militzer and Bob Riley**. We'll pack up and take a hike in the National Forest and set up a base camp. You can demo first hand many pack systems and camp gear from the folks that use them.



### ALSO:

- **Commercial Booths:** 8' x 10" space available: \$50.00 RMLA Member, \$100 non-member.
- **Ranch display:** 4' of Table space available \$20.00 per ranch.
- **Silent auction:** Funds raised will benefit the Youth Foundation Gifts and Donated items are needed. Look for applications in the Conference Registration Packet.

CONFERENCE CHAIRPERSON - JAN REDENBARGER (303) 642-0140

# **CAMELID NEONATAL SEMINAR**

**BY DR. LARUE JOHNSON, DVM**

This is a repeat of the very popular seminar that Dr. LaRue Johnson has done over 40 times during the past 14 years. The information is applicable to both Alpaca and Llama breeders. The seminar content includes detailed discussion of reproductive anatomy, physiology, breeding procedure recommendations, care of the pregnant dam, normal birthing, obstetrical procedures, a wet lab with hands-on opportunities for becoming proficient in making good decisions as regards normal delivery or complicated situations necessitating cooperation with your veterinarian. Following the lab, additional time will be spent discussing the normal as well as the high risk neonate. **NOTE: All profits after expenses will go to support camelid teaching and research - Colorado State University.**

**DATE:** Wednesday, October 2, 1996 (preceeding RMLA conference in Longmont)

**TIME:** 8:00 AM-5:00PM

**LOCATION:** Great Divide Llamas in Masonville, Colorado

**FEE:** \$200/registrant, with couples @ \$350 (owner + manager - couple) - includes breakfast refreshments and lunch.

**REGISTRATION:** Limited to the first 24 respondents.

Contact Dr. LaRue Johnson by FAX, USPS or E-mail  
CSU Veterinary Teaching Hospital

300 W. Drake • Fort Collins, CO • 80523

FAX (970) 491-1275

llama@vagus.vth.colostate.edu

(Note: a \$50 check will secure your registration.)

3709 W. Cty Rd. 50  
Fort Collins, CO 80521

Michael & Robbie Guidry  
(970) 482-0350



**Cottonwood Farm Alpacas**

Sales  
Breeding

Fiber  
Boarding



**Serenity Lane**  
LLAMAS & ALPACAS

Sales

Breeding

Boarding

Since 1984

Bill & Donna Brown .15293 W. Hwy. 24 Woodland Park, CO 80863

719-687-1224



**RMLA**

# ADVERTISING FOR THE CONFERENCE NOTEBOOK

Deadline is Sept. 1, 1996

**RMLA** is offering advertising space in the Conference Notebook. There are two categories of advertising. The Section Tabs will have ads printed on each side. If you want a photo in your ad, this is the place to advertise. The other pages in the notebook will be xeroxed and will not be the same quality as the printed pages.

This is not only a great way to advertise your ranch but to also show your support of RMLA and a great Conference.

## REGULAR PAGES:

FULL PAGE .....	\$65.00
HALF PAGE .....	\$40.00
QUARTER PAGE .....	\$20.00
BUSINESS CARD .....	\$10.00

## LEFT SECTION TABS:

FULL PAGE .....	\$100.00
HALF PAGE .....	\$60.00

## RIGHT SECTION TABS:

FULL PAGE .....	\$90.00
HALF PAGE .....	\$50.00

Please send your camera-ready ads and check payable to RMLA to:  
Jo Riley • P.O. Box 1189 • 1612 Spring Gulch Drive • Lyons, CO • 80540

## Caring for Llamas and Alpacas

A Health and Management Guide

This all new 1996 edition of this popular book is now available. It contains 167 pages and over 60 illustrations. It is a must for new owners but should be on everybody's Llama and Alpaca book shelf. A great gift idea for the new owner!

Send your name, address, city, state and zip and \$23.95 plus \$4.00 Shipping and Handling. (Colorado Residents add 3% sales tax) to:

RMLA Bookstore  
ATTN: Julie Messick  
7411 North Road 2 East  
Monte Vista, CO 81144  
(Make checks payable to RMLA)

An RMLA Publication.

Get your copies at the  
RMLA Conference and  
save S & H!

# LAMA RESEARCH PROJECTS APPROVED BY MORRIS ANIMAL FOUNDATION 1995

**1. Vitamin D Deficiency Induced Hypophosphatemic Rickets In Camelids**  
Drs. Van Saun and B. Smith at Oregon State University. One year \$18,508.

Metabolic bone disease with resultant angular limb deformities is a significant clinical problem in the young rapidly growing llama and alpaca. The hypothesis being tested is: South American camelids are incapable of synthesizing sufficient vitamin D. to meet daily requirements for maintenance and growth during the winter months, resulting in a vitamin D- responsive hypophosphatemic rickets syndrome in neonatal animals. A preliminary study has demonstrated significantly lower serum concentrations of vitamin D and phosphorus in clinical rickets-affected animals compared to nonclinical herd mates and a strong association between low serum vitamin D and phosphorus concentrations. Significant effects of month of birth on serum vitamin D concentrations suggested a seasonal susceptibility phenomenon. Given the suggestion of a seasonal incidence with this syndrome, a relationship between light availability (seasonal influences) and serum Vitamin D, calcium, and phosphorus Concentrations is currently in progress. The final aspect of the investigation will determine the relationship between exogenous vitamin D administration and changes in serum calcium and phosphorus concentrations as the first step in the development of therapeutic and preventive strategies.

**2. Development and use of Monoclonal Antibodies to Characterize the immune System In Lamas** Dr. Wm. Davis and associates at Washington State U. One year \$19,200.

White blood cells (leukocytes) are an important part of resistance to many diseases. Very little is known about them and their function in lamas. This study will use laboratory methods established in other animal species and humans to identify the various leukocyte types and characterize the immune system in lamas. This basic knowledge will provide information necessary to understanding how the lama

fights infection, develops immune deficiencies, responds to immunization, and may lead to more specific tests for diseases such as tuberculosis. It may also provide a more rational basis for vaccinations.

**3. Choanal Atresia in the Llama: Heritability and Identification of Carriers** Dr. B. Smith and associates at Oregon State U., and Drs. Adams and Templeton of Texas A & M University. Three years \$39,999 Yr. 1; \$22,530, Yr. 2; \$7,725, Yr. 3 ; \$9,744.

Choanal atresia is the most common significant developmental defect encountered in the North American camelid population. This study will test the hypothesis that choanal atresia is a genetically based disorder than can be identified in clinically normal llamas using DNA analysis techniques. Successful Conclusion of this study will permit identification of carrier animals and facilitate their removal from the gene pool. This project is a continuation of a currently funded 3 year MAF study and will expand the use of techniques developed and refined during the initial 3 year period.

For additional information contact the  
Lama Medical Research Group:  
Ron Baird, Allan Dewald, Lavona Fercho,  
Hank Kauffman, Dick Wickum or Art Kennel,  
Chr.



**Harold & Sharon Herbold  
Lauren Herbold**  
15350 Hwy 83  
Colorado Springs, CO 80921  
(719) 495-3092  
(800) 484-9739-WOOL (9665)

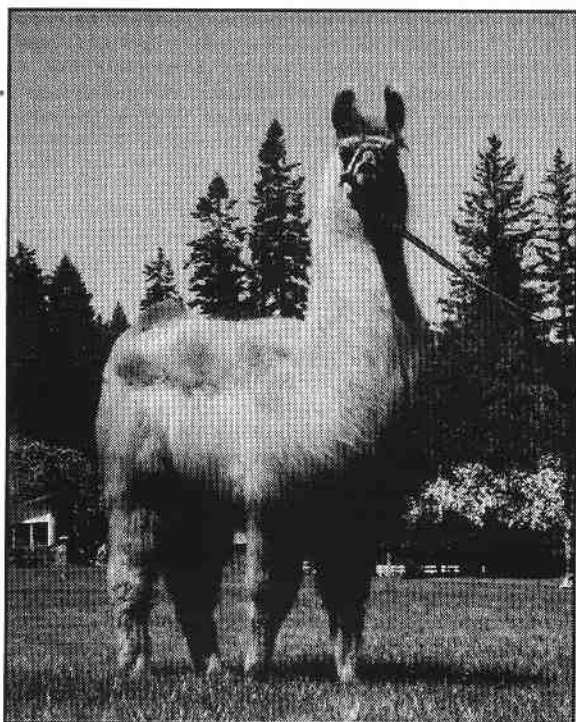
Llamas  
Breeding Stock, Pets, Sheep Guards  
Reg. Corriedale & Colored Sheep  
Breeding Stock, Handspinning Fleeces, Market Lambs  
Visitors Welcome

Aaeeyaaayaaayaaayaa.....

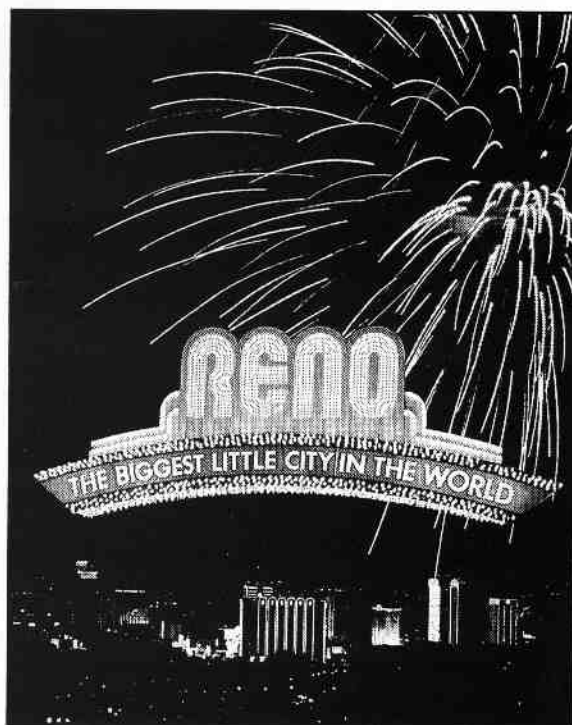
Johnny Weissmuller



**RENO LIVESTOCK EVENTS CENTER ★ SEPTEMBER 20-21, 1996**



A great opportunity to add an exceptional llama to your breeding program.



And enjoy a Reno Getaway Weekend...  
Make plans today to join us.

**ACCOMMODATIONS**

**Circus Circus ■ 1-800-648-5010**

**Holiday Inn Downtown ■ 1-800-648-4877**  
Firecracker blocks at above hotels

Reno is very busy this time of year.  
Please reserve at earliest convenience.

**RENO INVITATIONAL  
LLAMA SALE**

and

**"Best of the West II"  
ALSA Llama Show**

Call for show premium list and sale information.  
Color sale catalog will be available for this sale.

Presented by FIRECRACKER, INC.

Dick & Pat Wickum ■ 21325 Finn Road ■ Sheridan, OR 97378 ■ (503) 843-2765 ■ Fax (503) 843-3030

**FIRECRACKER OFFICE ■ 1-800-876-8816**

# Bios of RMLA Board Member Nominees

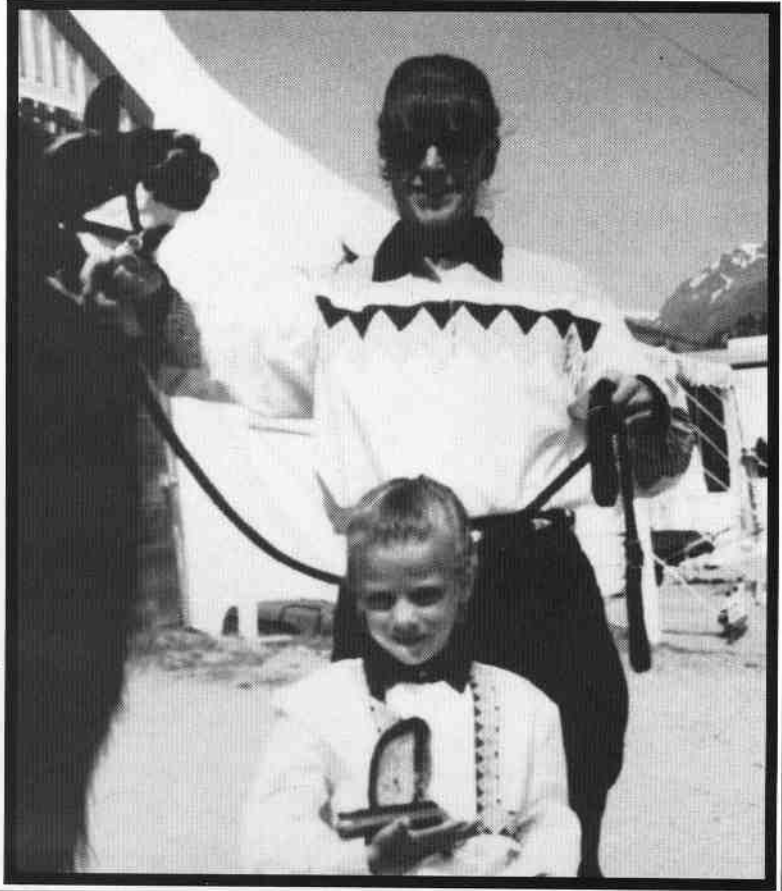
## Jan Redenbarger - RMLA Vice-President

Jan grew up in rural Indiana and attended Purdue University where she received a BS degree in Wildlife Biology. After graduating, she and her husband Jim joined the US Peace Corps and served in Nepal. Upon returning they moved to Colorado and have lived here for 19 years. They have two children, a son Tyson, 11, and a daughter Jillian, 7.

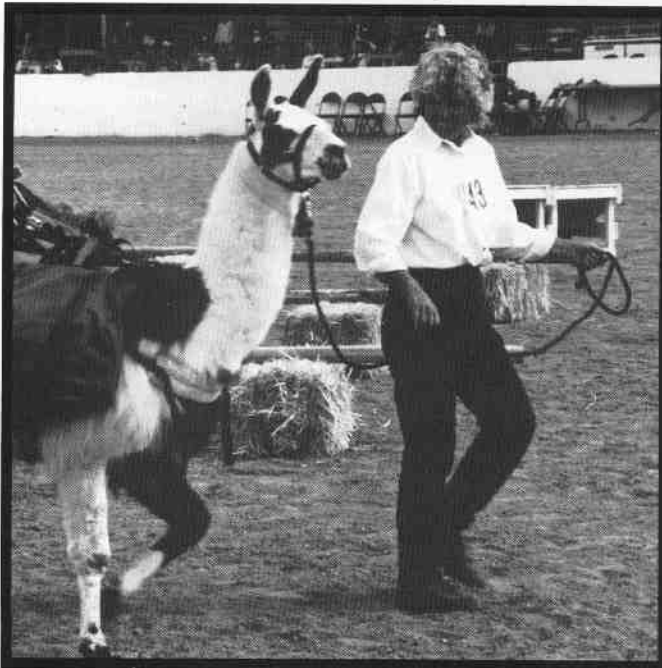
Jan worked for 15 years in Environmental Chemistry as a chemist and as a Quality Assurance professional. She currently handles the administrative and financial responsibilities for Winding Trails, Inc., Jan and Jim's consulting and llama businesses.

Jan became a llama lover/owner when backpacking with a young son became too much to handle with the weight of all the gear and car camping for the next 10 years was not a preferable option. They have since acquired a herd of 10.5 llamas with the 0.5 llama being a partnership with Llamarage and ALSA Champion GLL Java.

An RMLA member since 1987 she feels that continuing member education is very important through seminars, mini-conferences and workshops. Having enjoyed working on several RMLA sponsored committees she is presently chairperson for the Continuing Education committee which this year is preparing for the RMLA Conference in Longmont, CO in October '96. Hope to see you there!



## Jerry Dunn - RMLA Vice-President



I have been a llama owner and trainer for 12 years and enjoy participating in llama shows and other llama activities. I have been a coordinator and committee member involved in the organization of the RMLA conference in Longmont 1994 and 1996, a board member for the Youth Education Fund since its formation in 1989, and superintendent of the Llama Show at the National Western Stock Show for two years. In May, 1995 I retired after 32 years of teaching and coaching in the Jefferson County school system in Colorado. Working with kids and writing about their experiences with llamas has been most rewarding.

I am proud to be a member of RMLA based on the support of the membership to maintain a vision for the industry by demonstrating a strong interest in the promotion of the llama species through education, research, and marketing. I would like to be more closely involved in these activities and help to maintain the camaraderie of the trend setting RMLA.

It is with great pride and honor that I accept the nomination for vice-president of RMLA.

Jerry Dunn • Bear Track Farm • Golden, Colorado

## Lougene Baird - RMLA Treasurer

Llamas came to our pasture in 1992 when I realized that 50 pounds on my back began to dampen my enthusiasm to get into the remote corners of the Rockies! Llamas and packing-as wonderful as they were-were just a doorway to an entire new world. Crias followed, the herd grew and so did the expanding



circle of very talented folks that we met across the nation... folks who also shared the mutual love and respect for llamas.

It soon became apparent, after reviewing the mission of several "lama" organizations, that RMLA best suited our needs for membership. Over the past several years I have served as Election Chair, written for the newsletter, and served on the Conference '94 Committee as Registrar. I have been the CoSuperintendent of the Estes Park Wool Market Llama Show and the Douglas County Fair Summer Classic Youth Show. The most rewarding of all has been serving as your Treasurer since October 1994.

I have become acutely aware of the many talented folks in our membership and am committed to working with you as we take our organization smartly into the 21st century. We all have work to do for the betterment of the industry and for the benefit of the wonderful animals that have brought us all together.

Thank you for your nomination to serve again as Treasurer of this long standing llama organization. I will continue to keep accurate accounting records in a timely fashion. As an Executive Board member, I hold important the idea of a strong future for RMLA and as well as the needs of each individual member.

## Bob Riley - RMLA President Elect

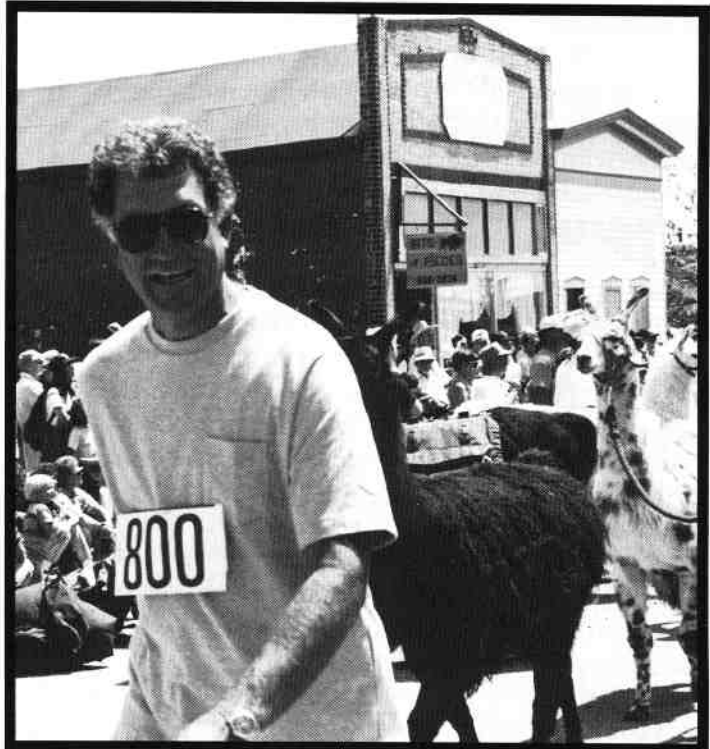
Llamas have forever changed our lives. My wife, Jo, and I have been members of RMLA since 1990. Jo is the past newsletter editor and I have contributed articles and photos on a regular basis. I have served on the finance committee and am currently serving as Vice President of RMLA. In addition, Linda Kyriopoulos and I are co-representing RMLA on the Lama Steering Committee dealing with forming an alliance of llama organizations to deal with llama issues of national scope. As the chairperson for the RMLA Llama Legal Defense Fund, I have raised over \$17,000 for the Canyonland Task Force, dealing with the misguided banning of llamas on the basis of John's Disease at the Canyonlands National Park. I am one of the three members appointed by Llama Assembly 96 to head that task force.

My hobby and life's passion is hiking with llamas. I have completed the Colorado Trail and started hiking the Continental Divide Trail last summer. The past three years I have hiked over 1,000 miles with my speechless companions, llamas. This summer I will continue hiking the divide in Montana.

The issues facing RMLA today are familiar to any volunteer organization, namely apathy. The course that I would like to set for RMLA is one of getting it's membership more involved! There is a saying, and it may be true for RMLA as well, 20% of the people do 80% of the work. My goal is to encourage more of our members to get involved.

We have a history of being a dynamic organization and a leader within the llama community. The elected officials of your llama and alpaca organization need your input, involvement and guidance. Do not assume we will get along without you. Volunteer to sponsor a 4-H group, organize a camp

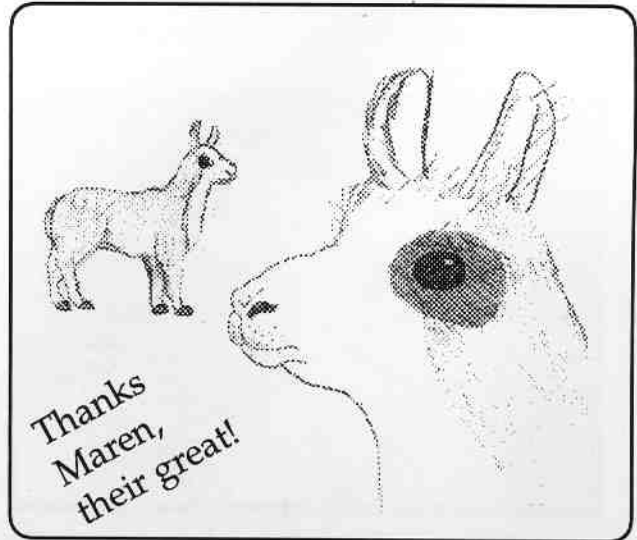
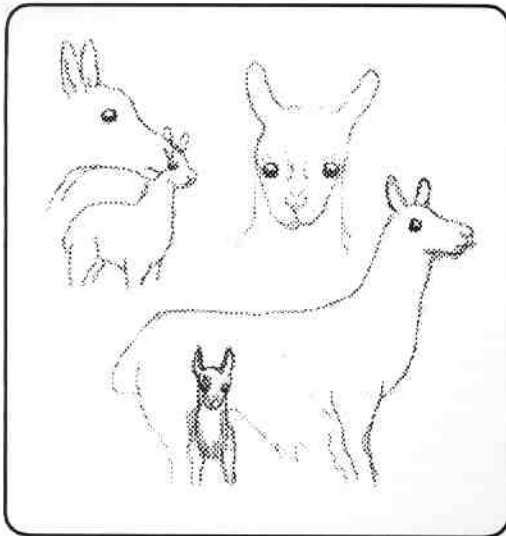
jamboree, put on a show, get involved in this fall's conference in Longmont and contribute to the newsletter. Whether you are a chairperson for a major event or help with the obstacles at Estes Park Wool Market, your involvement will be appreciated.



# Just for Kids!

by Linda Kyriopoulos • Sterling Springs Ranch • Mt. Sterling, UT • (801) 254-3529

Drawings are by 11 year old Maren Bergeson from Millville, UT  
Her parents are Lars and Janet Bergeson, Radford Farms.



## Costume Class, A Favorite

By Levi Kauffman

Costume class is one of the funniest classes to be in. It is also one of the funniest classes to watch.

I show and work with a llama named Barbarosa, but when I show him in costume class he becomes Barbara. He is an 11 year old brown gelding who was one of the first llamas we ever had. We surprised our dad with him and another llama for his fortieth birthday, because he had always wanted to have llamas. We have started to get more llamas.

Last year after watching a costume class at a llama show, our family decided to try it. Every one helped come up with the idea of making me the groom and Barbarosa the bride. We cut two holes for ears out of an old Easter hat, and sewed a veil to go over his eyes. We made a "JUST MARRIED" sign and tied cans to it and hung it behind him so that the cans made a loud noise when he walked. We hung a wreath around his neck and put a garter on his front leg.

Barbarosa is a very tolerant llama, but it was still a challenge to get his hat and veil on. At first, it took our whole family to hold him while my mom slipped his ears through the holes in the hat and tied the strap under his chin. After we put it on a couple of times, he let us put it on easily.

When you show in a costume class, they have you write a story for the announcer to read while you walk around the ring. The story that we had to go with it was a letter to my parents, saying that I had taken a bride. When it got to the part where it talked about me taking off "Barbara's" garter, I reached down, lifted Barbarosa's leg, and took it off. Then I threw it over my shoulder.

A judge judges a costume class by seeing how many things a llama has to tolerate. Most llamas do not like their head, legs, or face touched. The more things that a llama has to have on those places, the better you place. Barbarosa had things on his head, legs, over his face, and cans making noise behind him. The judges also liked that I lifted his leg.

When I first used this costume in a show, I got a second place. Then I showed it in another show, and I took a third. The third and last time I used it was at the regional llama championship in Oklahoma. I took a fourth out of four! One of the llamas in that class had bells, hula hoops, clothes, hats, sunglasses, and a dog. Another one danced with his llama, and the other one rode her llama. I was very surprised! I have decided to make up a new costume if I do this class in another show.

*(See picture on next page)*

Levi, his parents, Dave and Willow, sisters, Gretchen and Heidi, live near Castle Rock, CO at their Dusty Britches Ranch.



**Levi Kauffman with Barbarosa.**

Picture taken at the 1996 National Western Stock (Llama) Show.

# LAMAS IN THE NEWS

Sienna Graham, 2 1/2 year old daughter of Bill and Nola, Castle Hill Farm of Spokane, WA is shown 'in-tow' of an Alpaca at the AOBA show in Currigan. The 7" x 10" picture and about 200 words appeared in the Rocky Mountain News on June 14th, 1996.

Alpacas advertisement was found in the July, '96 issue of Sunset Magazine, pg 133. Readers are encouraged to call a toll free number to an organization known as Western Alpaca Associates.

In a recent article in the July 16th issue of Capper's newspaper, the Extension Service of Iowa State University interviewed 145 llama-owning sheep ranchers. 85% said they would recommend llamas as guards.

Kathy Faber's two guards, Norman and Spice, guard her flock of 34 sheep on her 80 acre ranch very well, she says.

She Got the Gold Mine, I Got the Shaft.

*Jerry Reed song title*

## SDF Graphics

(.....Serendipity Farm)

Satisfaction  
Guaranteed

<b>Business Cards</b>	<b>Brochures</b>	<b>Labels</b>
<b>Maps to you!</b>	<b>Forms</b>	<b>Special Graphics</b>
<b>Logos</b>	<b>Ad layout</b>	<b>Drawings</b>
<b>Stationary</b>	<b>Stickers</b>	<b>Newsletters</b>
<b>Envelopes</b>	<b>Camelid Clipart</b>	<b>and more.</b>

Ron Hinds	(303) 841-4889 Voice
9349 N. Tammy Lane	(303) 841-7635 Fax
Parker, CO 80134-7511	RONLAMA@AOL.COM e-mail

Member: AOBA, RMLA, ABR, ILA, ARI

**Stevens Llama Tique and Suri Alpacas**



FOR SALE: • Corral Panels & Gates  
• Kiwi Gate Latches • Circuiteer II  
Blowers and Booms • Halters and Leads  
• Grooming Equip. • Driving Harnesses  
• Nail & Wool Shears • Packs • Unique Hay  
Bags • Vented Soft Rubber Stall/Trailer Mats  
• Balance Beam Scales • Fiber Optic Speculum  
• Restraint/Grooming Chutes • New Specialty  
Llama Trailers  
• **Free Catalog**

☎ **1-800-4MY-LAMA (469-5262)**  
(507) 376-4230 • Fax (507) 376-4242  
Rt. 4, Box 39 • Worthington, MN 56187

• Visitors & Inquiries Welcome

• Wool • Sales • Leasing • Transportation  
• Breeding Services • Live Birth Guarantee

Quality Breeding  
Males and Females  
Available

Loren  
and  
Judy  
Stevens  
★ Worthington, MN

# 1996 ESTES PARK WOOL MARKET LLAMA SHOW

This year's ALSA Show at The Estes Park Wool Market was again a very large show -and could end up being the largest ALSA show in North America for the second year. Combined llama and alpaca totaled 425 animals entered in over 70+ classes. The show was judged by Howard Kerstetter, Bozeman, Mt., and Maggie Krieger, Canada. Superintendents Jo Riley and Lougene Baird thank the 70+ volunteers who worked many hours before the show and all through the weekend. Without you there would be no show.

Show check-in and re-assignments of classes and committee - **Jan Redenbarger**  
 Stall sign stapler - **Vikki Everhart**  
 Arena decorations and construction of the wonderful new wooden aisle markers - **John & Sharon Beacham**  
 Saturday Night Hoedown Bar-B-Q - **Jim & Jan Redenbarger - Mary Beth & Jo Hartsough**  
 Hospitality Tent - **Donna Brown**  
 Obstacle Course Coordination - **Gwen Smith, Sharon Herbold, D. Stoddard, Judy Cox-Sample, Sandy Lockwood, Mary Mauz, Bart Anderson, Kristy and David Heide, Bruce and Gay Ellis, Angie Rhodebecker, Udo, Jonna and Hanna O'Brien.**

Gate Keeper - **Steve & Kathy London, Also; Scott Everhart, Dixie Minier, Fran Kramer, Margaret Neis, Charlie Nak, Russ Logan, Willow Kauffman, John Stout, Mary Summers, Mark and Sandy Fischer and Barbara Harris.**

Ring Stewards - **John McCullough and Kevin McCullough**

Announcer - **Bill Lilly**

Clerks - **Marilyn Arnold and Janie Stout**

Award Presenters - **Jaci and Bob Aue**

Arena Rediness - **Tracy Montgomery and the Llofty Llama 4-H Club: Levi, Gretchen and Heidi Kauffman, Carly Loner, Ed, Gloria, Isaac and Sara Bans, Sarah Thomas, Andrea Kroeckel and Deidre Baird.**

RMLA display - **Jim Osmun**

Check out - **Gail Segreto**

Show Breakdown and storage of obstacles - **Cliff Harding & Rosi Zeschin - Jack and Betty Goetzinger.**

Production of Exhibitor Show Book - **Julie Messick**

Trophy Sales - **Elizabeth Simpson**

Lots of greenery for the arena - **Phil Switzer & Ron Hinds**

Congratulations to all of you for being a part of this wonderful show. We appreciate your positive feedback and suggestions for helping to make next year's show even better.

And speaking of next year..work has already begun. A list of judges has been submitted to the fairgrounds manager for judge selection. Several wonderful folks have already volunteered for key positions. Three new challenging obstacles have been submitted and are under consideration.

Lougene Baird

## SHOW RESULTS

### LIGHT WOOL YEARLING MALES

1 Rainbow's Lyon King Leslie Dickman Dickman's Rainbow Llamas Thedford, NE  
 2 PRLM Bradley Baird Tracy Montgomery Prima Llama Ranch Castle Rock, CO

### LIGHT WOOL TWO-YEAR-OLD MALES

1 T.T.E. Snickerdoodle Robert Veuthey Dancing Pines Ranch Colo. Spgs, CO

### LIGHT WOOL ADULT MALES

1 Rocky Mountain Bounce Diane Solomon Rocky Mountain Llamas Longmont, CO  
 2 McGillicuddy Spring Lillie Rocky Canyon Ranch Lyons, CO  
 3 Serenity Lane Conquistador Tracy Montgomery Prima Llama Ranch Castle Rock, CO

### MALE LIGHT WOOL GRAND CHAMPION

Rocky Mountain Bounce Bobra Goldsmith Rocky Mountain Llamas Longmont, CO

### MALE LIGHT WOOL RESERVE GRAND CHAMPION

T.T.E. Snickerdoodle Robert Veuthey Dancing Pines Ranch Colo. Spgs, CO

### LIGHT WOOL JUVENILE FEMALES

1 Tall Tail's Sierra Robert Knuckles Tall Tail Ranch Grand Junction, CO  
 2 Twin Peaks Sarabi Bart Anderson Twin Peaks Llama Farm Platteville, CO

### LIGHT WOOL YEARLING FEMALES

1 Backcountry Cherokee Fran Cranor Backcountry Llamas Paonia, CO

### LIGHT WOOL TWO YEAR OLD FEMALES

1 Dolly Melvia Huddleston H & H Alternative Livestock Boone, CO

### LIGHT WOOL ADULT FEMALES

1 Rocky Mountain Spoo Bobra Goldsmith Rocky Mountain Llamas Longmont, CO  
 2 Lockwood's Magic Dawn Sandra Lockwood Lockwood Llamas Conifer, CO  
 3 Cotton Candy Girl Laura Leigh Fowlkes Southwind Llamas Pueblo, CO  
 4 Rocky Mountain Butternut Bobra Goldsmith Rocky Mountain Llamas Longmont, CO

### FEMALE LIGHT WOOL GRAND CHAMPION

Backcountry Cherokee Fran Cranor Backcountry Llamas Paonia, CO

### FEMALE LIGHT WOOL RESERVE GRAND CHAMPION

Tall Tail's Sierra Robert Knuckles Tall Tail Ranch Grand Junction, CO

### MEDIUM WOOL JUVENILE MALES

1 Bozz Bo Rose Mary Zeschin Hillcrest Llama Ranch Platteville, CO  
 2 P/M Ace of Spades Pat & Maury Cox P/M Llamas LaSalle, CO  
 3 Night Dancer Mary Beth Hartsough Llamarage Platteville, CO  
 4 PLR Dude Hilary Price Price Llama Ranch Durango, CO  
 5 P/M Cappi Pat & Maury Cox P/M Llamas LaSalle, CO  
 6 Timberline's Ak-chin Mary Mauz Timberline Llamas Golden, CO

### MEDIUM WOOL YEARLING MALES

1 Homer Simpson Caroline Kressly Tamarack Llamas Inc. Lynnport, PA  
 2 Charlie Champagne Rose Mary Zeschin Hillcrest Llama Ranch Platteville, CO  
 3 CVCIS Tchaikovsky Bruce Ellis Lazy B Llamas Franktown, CO  
 4 PRLM Andean Snow Candy Montgomery Prima Llama Ranch Castle Rock, CO  
 5 Kahura Uyu Tarryall Denise Hankins Lucy H Ranch Colorado Springs, CO  
 6 Huckbee Udo Paerschke O'Brien Itty Bitty Ranch Golden, CO



Love is where my Llama is.



**MEDIUM WOOL TWO-YEAR-OLD MALES**

1 P/M John Paul Too	Maury Cox	P/M Llamas	LaSalle, CO
2 Logan's Run	Leslie Logan	J 'n' L Llamas	Ft. Morgan, CO
3 Llamarage's Calvin	Mary Beth Hartsough	Llamarage	Platteville, CO
4 DLR Winsome Winchester	John Stout	Diamond Link Ranch	Glade Park, CO
5 RF Double Nickel	Marty Johnson	Roman Farms	Bend, OR
6 Batu	Jerry Dunn	Bear Track Farm	Golden, CO

**MEDIUM WOOL ADULT MALES**

1 Polar Plus	Leslie Dickman	Dickman's Rainbow Llamas	Thedford, NE
2 Rocky Mountain Dubloon	Roger Miller	Escarpment Llamas	Colorado Springs, CO
3 Bespeckled	Gretchen Kauffman	Dusty Britches Ranch	Castle Rock, CO
4 Rocky Mountain's Niwot	Jerry Dunn	Bear Track Farm	Golden, CO
5 G.L.L. Midnight Express	Jerry Dunn	Bear Track Farm	Golden, CO
6 Rocky Mountain Sultan	Diane Solomon	Rocky Mountain Llamas	Longmont, CO

**MALE MEDIUM WOOL GRAND CHAMPION**

Bozz Bo	Rose Mary Zeschin	Hillcrest Llama Ranch	Platteville, CO
---------	-------------------	-----------------------	-----------------

**MALE MEDIUM WOOL RESERVE GRAND CHAMPION**

Polar Plus	Leslie Dickman	Dickman's Rainbow Llamas	Thedford, NE
------------	----------------	--------------------------	--------------

**MEDIUM WOOL JUVENILE FEMALES**

1 PPW Amigo	Harold Herbold	Pikes Peaks Woolies	Colorado Springs, CO
2 Shadtree's Majin That	Betty Goetzinger	Shadtree Ranch	Ft. Lupton, CO
3 PPW Miss Bolo	Lauren Herbold Webb	Pikes Peaks Woolies	Colorado Springs, CO
4 Bobbi's Calamity Jane	Leslie Logan	J 'n' L Llamas	Ft. Morgan, CO
5 RPL Pocahantas	Sue Grimm	Grand Slam Llamas	Georgetown, CO
6 PVLH Holiday Spirit	Ron Baird	Plum Valley Llamas	Sedalia, CO

**MEDIUM WOOL YEARLING FEMALES**

1 Picacho's Mahalo	Bob Riley	Boulder Ridge Ranch	Lyons, CO
2 Miss Nala	Warren Garthwaite	Garden Gate Llamas	Nederland, CO
3 Jewel's Sassy	Leslie Logan	J 'n' L Llamas	Ft. Morgan, CO
4 Glorioso	Steve London	Dusty Llamas	Longmont, CO
5 Rainbow Valley Micka	Reid Langerman	Rainbow Valley Llamas	Placita, NM
6 Wind River's Amelia Earhart	Rachel Tanner	Bucking Fish Farm	Bellvue, CO

**MEDIUM WOOL TWO-YEAR-OLD FEMALES**

1 Quinita	Sara Atkinson	Misara Llama Ranch	Fleming, CO
2 Magic Mesa Delite	Margaret Mies	Magic Mesa Farm	Hotchkiss, CO
3 Rocky Mountain Marimba	Bobra Goldsmith	Rocky Mountain Llamas	Longmont, CO
4 Cololama's Cochee	Luanne Williams	Cololama Ranch	Conifer, CO
5 Midnight	Jane Haggard	H & H Alternative Livestock	Boone, CO

**MEDIUM WOOL ADULT FEMALES**

1 Rocky Mountain Impression	Bobra Goldsmith	Rocky Mountain Llamas	Longmont, CO
2 Chilean Tarapaca	Susan Miller	County Line Llamas	Sheridan Lake, CO
3 Kuhura Uyu Kobresia	Ron Baird	Plum Valley Llamas	Sedalia, CO
4 Angelica	Russ Miller		Pine, CO
5 Foolish Pleasure	Robert Pauly		Boulder, WY

**FEMALE MEDIUM WOOL GRAND CHAMPION**

PPW Amigo	Harold Herbold	Pikes Peaks Woolies	Colorado Springs, CO
-----------	----------------	---------------------	----------------------

**FEMALE MEDIUM WOOL RESERVE GRAND CHAMPION**

Picacho's Mahalo	Bob Riley	Boulder Ridge Ranch	Lyons, CO
------------------	-----------	---------------------	-----------

**HEAVY WOOL JUVENILE MALES**

1 Picacho's Espresso	Bob Riley	Boulder Ridge Ranch	Lyons, CO
2 Hakuna Matata	Vicki Everhart	Quakey Brake Llamas	Cory, CO
3 Captain Brio	Jack Goetzinger	Shadetree Ranch	Ft. Lupton, CO
4 Bitter Creek Winchester Spec.	Kim Murphy	Bitter Creek Llamas	Muenster, TX
5 Silver Sage's Challenger	Ellen Schreiner	Silver Sage Llamas	Casper, WY
6 Intimidator	Anne Heath	Lazy H Llamas	Keller, TX

**HEAVY WOOL YEARLING MALES**

1 Cadfael	John & Sharon Beacham	Pheasant Hill Farm	Boulder, CO
2 Lextan	Ken Rogers	World Class Farms	Hereford, TX
3 PIR Jazzmatazz	Terry Price	Price Llama Ranch	Durango, CO
4 Kachemak	Betty Miller	Escarpment Llamas	Colorado Springs, CO
5 Zydeco's Phantom	Dirk & Deann Pierce	Victorian Place Llamas	El Reno, OK
6 Grand Valley Bentley	Kathie Weller	Red Hat Llama Ranch	Longmont, CO

**HEAVY WOOL TWO-YEAR-OLD MALES**

1 Shazam	Leslie Dickman	Dickman's Rainbow Llamas	Thedford, NE
2 Krakatoa	Marlice VanZandt	Touch The Earth Llamas	Black Forest, CO
3 Wind River's Independence	Wes Mazu	Timberline Llamas	Golden, CO
4 Silver Nitrate	Roger Miller	Escarpment Llamas	Colorado Springs, CO
5 HHL Winchester	Harold Herbold	Pikes Peaks Woolies	Colorado Springs, CO
6 HLR Dominator	Cliff Harding	Harding Llama Ranch	Hotchkiss, CO

**HEAVY WOOL ADULT MALES**

1 Gulliver	Ken Rogers	World Class Farms	Hereford, TX
2 Peruvian Picacho	Bob Riley	Boulder Ridge Ranch	Lyons, CO
3 Cameo's Nitro	Marty Johnson	Roman Farms	Bend, OR
4 Cum Laude	Vicki Everhart	Quakey Brake Llamas	Cory, CO
5 Bolivian Bean	Bret Nye	Bucking Fish Farm	Bellvue, CO
6 Rah	Melanie Rojko	Wind's Teeth Llamas	Fairplay, CO

**MALE HEAVY WOOL GRAND CHAMPION**

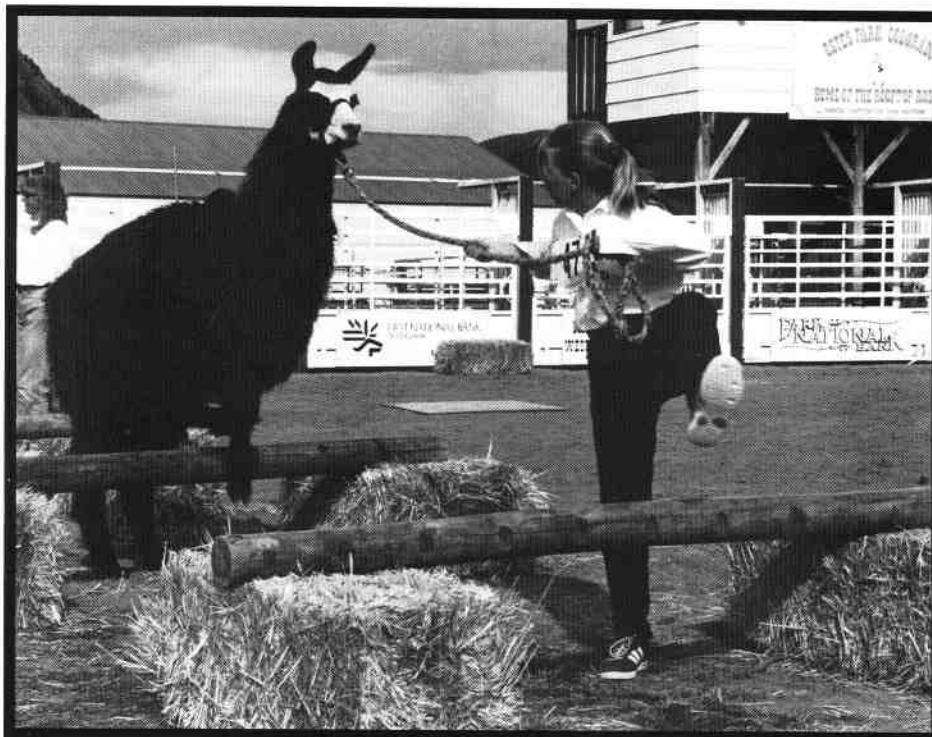
Gulliver	Ken Rogers	World Class Farms	Hereford, TX
----------	------------	-------------------	--------------

**MALE HEAVY WOOL RESERVE CHAMPION**

Shazam	Leslie Dickman	Dickman's Rainbow Llamas	Thedford, NE
--------	----------------	--------------------------	--------------

**HEAVY WOOL JUVENILE FEMALES**

1 PVLH Stirlings' Shaylyn	Ron Baird	Plum Valley Llamas	Sedalia, CO
2 Bitter Creek Calamity Jane	Kim Murphy	Bitter Creek Llamas	Muenster, TX
3 Shantilly Lace	Susan Miller	Country Line Llamas	Sheridan Lake, CO
4 Gomez's Little Pearl	Dirk Pierce	Victorian Place Llamas	El Reno, OK
5 GVC's Tosca	David Heide	The Outback Connection	Elizabeth, CO
6 Rainbow's Cassiopeia	Leslie Dickman	Dickman's Rainbow Llamas	Thedford, NE



Like This.....

**RMLA VOLUNTEERS**



**Marilyn, Jane and Lougene (with the tape measure).**

**HEAVY WOOL YEARLING FEMALES**

1 3D	Carlos Mendoza	Rancho Linda Vista	Erie, CO
2 PPW My Girl	Lauren Herbold Webb	Pikes Peaks Woolies	Colo. Springs, CO
3 Painted Skys Dominique	Linda May	Lindale Llamas	McEwen, IN
4 Picacho's Mercedes	Bob Riley	Boulder Ridge Ranch	Lyons, CO
5 Miss Molly By Golly	Holly Fleming	Whispering Woods Ranch	Oregon City, OR
6 Gulliver's Sandstorm	Ken Rogers	World Class Farms	Hereford, TX

**HEAVY WOOL TWO-YEAR-OLD FEMALES**

1 PHF Alouette	Ron Baird	Plum Valley Llamas	Sedalia, CO
2 PPLP Ticaboo	Cindy Burgess	Feathers & Friends Farm	Lubbock, TX
3 Sweetheart's Margarita	Jerry Knutson	Sweetheart Llama Ranch	Loveland, CO
4 PBL Black Eye Susan	Cindy Burgess	Feathers & Friends Farm	Lubbock, TX

**HEAVY WOOL ADULT FEMALES**

1 Sol Impact's Southern Mist	Laura Leigh Fowlkes	Southwind Llamas	Pueblo, CO
2 Bolivian Daffaduster	Donna Browne	The Peacock Farm	Ft. Lupton, CO
3 HLR Marcella	D. Stoddard	Roy-Dee's	Mesa, CO
4 Chilean Parinacota	Susan Miller	County Line Llamas	Sheridan Lake, CO

**FEMALE HEAVY WOOL GRAND CHAMPION**

3D	Carlos Mendoza	Rancho Linda Vista	Erie, CO
----	----------------	--------------------	----------

**FEMALE HEAVY WOOL RESERVE GRAND CHAMPION**

PHF Alouette	Ron Baird	Plum Valley Llamas	Sedalia, CO
--------------	-----------	--------------------	-------------

**NON-BREEDER TWO-YEAR-OLD**

1 Mandy Paloma	Rick Cummer	Trout Creek Llamas	Woodland Park, CO
2 Tintero	Gabi Von Roedern	Bear Track Farm	Golden, CO

**NON-BREEDER ADULT**

1 Cameron's Big Country	Cameron Baker	Tamarack Llamas, Inc.	Lynnport, PA
2 Red Feather	Debby Rothwell		Denver, CO
3 Rocky Mountain Bolder	Heather Messick	Lla Mariposa Llamas	Monte Vista, CO
4 Backcountry Boone	Heather Messick	Lla Mariposa Llamas	Monte Vista, CO
5 Bizet	Milt Chenoweth	Jones Creek Llamas	Pine, CO
6 New Shoes	Holly Fleming	Whispering Woods Ranch	Oregon City, OR

**NON-BREEDER GRAND CHAMPION**

Cameron's Big Country	Cameron Baker	Tamarack Llamas, Inc.	Lynnport, PA
-----------------------	---------------	-----------------------	--------------

**NON-BREEDER RESERVE GRAND CHAMPION**

Red Feather	Debby Rothwell		Denver, CO
-------------	----------------	--	------------

**ADVANCED OBSTACLE**

1 Cameo's Nitro	Marty Johnson	Roman Farms	Bend, OR
2 Rocky Mountain Bounce	Bobra Goldsmith	Rocky Mountain Llamas	Longmont, CO
3 WWW Eggnog	Becky Raber	Renaissance Llamas	Plain City, OH
4 MVF's Vageuro Bandito	Holly Fleming	Whispering Woods Ranch	Oregon City, OR
5 Rocky Mountain's Taos	Julie Messick	Lla Mariposa Llamas	Monte Vista, CO
6 RF Double Nickel	Marty Johnson	Roman Farms	Bend, OR

**NOVICE OBSTACLE**

1 Bespeckled	Gretchen Kauffman	Dusty Britches Ranch	Castle Rock, CO
2 Juan Platano	Marty Johnson	Roman Farms	Bend, OR
3 PVL R Holiday Spirit	Ron Baird	Plum Valley Llamas	Sedalia, CO
4 PPW Tuffy	Laruen Herbold Webb	Pikes Peaks Woolies	Colo. Springs, CO
5 Smokey Joe	Dixie Minear		Cheyenne, WY
6 PPW Domino	Adrienne Bergenfeld	Pikes Peaks Woolies	Colo. Springs, CO

**YOUTH INTERMEDIATE OBSTACLE**

1 WWW Eggnog	Ronnie Egnot	Renaissance Llamas	Plain City, OH
2 Bespeckled	Gretchen Kauffman	Dusty Britches Ranch	Castle Rock, CO
3 Cameo Nitro's	Marty Johnson	Roman Farms	Bend, OR
4 McGillucudy	Spring Lillie	Rocky Canyon Ranch	Lyons, CO
5 Mr. Black Cat	Sara Atkinson	Misara Llama Ranch	Fleming, CO
6 MTSL Vanguard	Sarah Funke	Touch The Earth Llamas	Black Forest, CO

**YOUTH JUNIOR OBSTACLE**

1 PPW Domino	Adrienne Bergenfeld	Pikes Peaks Woolies	Colo. Springs, CO
2 Batu	Nick Decicco	Bear Track Farm	Golden, CO
3 Suki's Lapis	Heather Colby	Boulder Ridge Ranch	Lyons, CO
4 Black Jack	Christiana Hoover	Stage Stop Llamas	Florissant, CO
5 E. L. Essence	Nicholas Slothower	Escarpment Llamas	Colo. Springs, CO
6 Kahura Uyu Tarryall	Denise Hankins	Lucy H Ranch	Colo. Springs, CO

**YOUTH SUB-JUNIOR OBSTACLE**

1 CL Irazu	Jill Redenbarger	Winding Trails Llamas	Golden, CO
2 Backcountry Boone	Chris Messick	Lla Mariposa Llamas	Monte Vista, CO
3 Rocky Mtn Happy	Heidi Anderson	Twin Peaks Llama Farm	Platteville, CO
4 Rainbow's Lyon King	Kelcee Dickman	Dickman's Rainbow Llamas	Thedford, NE
5 Serenity Lane Jin Ling	Sean Miller		Pine, CO
6 Cee Cee	Hanna Paerschke Obrien	Itty Bitty Ranch	Golden, CO

**COSTUME**

1 PPW Domino	Adrienne Bergenfeld	Pikes Peaks Woolies	Colo. Springs, CO
2 P.P.W. Cosmo	Alissa Veuthey	Dancing Pines Ranch	Colo. Springs, CO
3 Pucchini	Nathan Paerschke Obrien	Itty Bitty Ranch	Golden, CO
4 Black Jack	J. Charles Huddleston	H & H Alternative Livestock	Boone, CO
5 Hi Tech	Matthew Keeran	Itty Bitty Ranch	Golden, CO

**PACK STRING**

1 Julie Messick	Lla Mariposa Llamas	Monte Vista, CO
2 Jerry Dunn	Bear Track Farm	Golden, CO
3 Melanie Rojko	Wind's Teeth Llamas	Fairplay, CO
4 Debby Rothwell		Denver, CO



### Obstacle - Fast Pace

#### PRODUCE OF DAM

- 1 Morris's Truffles Page
- 2 Chirripo
- 3 Four Seasons Veronica
- 4 Ke-Lu's Millie Dee
- 5 Timberline's Kinteel
- 6 Frosty Octavian

- |                  |                         |                   |
|------------------|-------------------------|-------------------|
| Harold Herbold   | Pikes Peaks Woolies     | Colo. Springs, CO |
| Marlice VanZandt | Touch The Earth Llamas  | Black Forest, CO  |
| John Stout       | Diamond Link Ranch      | Glade Park, CO    |
| John Stout       | Diamond Link Ranch      | Glade Park, CO    |
| Mary Mauz        | Timberline Llamas, Inc. | Golden, CO        |
| Cathy Witttrup   | C & M Llamas            | Falcon, CO        |

#### GET OF SIRE

- 1 Gulliver
- 2 PLR Jazzmatazz
- 3 Peruvian Picacho
- 4 Wind River's Independence
- 5 Master Jay

- |                   |                             |              |
|-------------------|-----------------------------|--------------|
| Ken Rogers        | World Class Farms           | Hereford, TX |
| Terry Price       | Price Llama Ranch           | Durango, CO  |
| Bob Riley         | Boulder Ridge Ranch         | Lyons, CO    |
| Mary Mauz         | Timberline Llamas           | Golden, CO   |
| Melvia Huddleston | H & H Alternative Livestock | Boone, CO    |

#### ROCKY MOUNTAIN RACE

- 1 T.T.E. Snickerdoodle
- 2 PLR Dude
- 3 RF Double Nickel
- 4 Tabernash
- 5 Blitzen De La Valle
- 6 Mr. Black Cat

- |                  |                     |                   |
|------------------|---------------------|-------------------|
| Robert Veuthey   | Dancing Pines Ranch | Colo. Springs, CO |
| Terry Price      | Price Llama Ranch   | Durango, CO       |
| Marty Johnson    | Roman Farms         | Bend, OR          |
| Lougene Baird    | Plum Valley Llamas  | Sedalia, CO       |
| Michele Alderton | Lla Mariposa Llamas | Monte Vista, CO   |
| Sara Atkinson    | Misara Llama Ranch  | Fleming, CO       |

#### ADVANCED PACK LLAMA

- 1 Cameo's Nitro
- 2 Rocky Mountains Taos
- 3 Backcountry Boone
- 4 Rocky Mountain Bounce
- 5 Talavi

- |                 |                       |                 |
|-----------------|-----------------------|-----------------|
| Marty Johnson   | Roman Farms           | Bend, OR        |
| Julie Messick   | Lla Mariposa Llamas   | Monte Vista, CO |
| Julie Messick   | Lla Mariposa Llamas   | Monte Vista, CO |
| Bobra Goldsmith | Rocky Mountain Llamas | Longmont, CO    |
| Jerry Dunn      | Bear Track Farm       | Golden, CO      |

#### NOVICE PACK LLAMA

- 1 Rah
- 2 Nin Muneca's El Guapo
- 3 Colorama's Silver Bullet
- 4 Kahura UYU Lighthawk
- 5 Bespeckled
- 6 Max

- |                   |                          |                   |
|-------------------|--------------------------|-------------------|
| Melanie Rojko     | Windis Teeth Llamas      | Fairplay, CO      |
| Julie Messick     | Lla Mariposa Llamas      | Monte Vista, CO   |
| Ben Riggs         | Bear Track Farm          | Golden, CO        |
| Gregg Romens      | Wild Flower Ridge Llamas | Colo. Springs, CO |
| Gretchen Kauffman | Dusty Britches Ranch     | Castle Rock, CO   |
| Bruce Ellis       | Lazy B Llamas            | Franktown, CO     |

#### YOUNG PACK LLAMA

- 1 RF Double Nickel
- 2 DLR Winsome Winchester
- 3 Touch the Earth Mandela
- 4 Tintero
- 5 Logan's Run
- 6 Batu

- |                  |                        |                  |
|------------------|------------------------|------------------|
| Marty Johnson    | Roman Farms            | Bend, OR         |
| John Stout       | Diamond Link Ranch     | Glade Park, CO   |
| Mike Shealy      | Touch the Earth Llamas | Black Forest, CO |
| Gabi Von Roedern | Bear Track Farm        | Golden, CO       |
| Leslie Logan     | J 'n' L Llamas         | Ft. Morgan, CO   |
| Nick Decicco     | Bear Track Farm        | Golden, CO       |



**YOUTH SUB-JUNIOR SHOWMANSHIP**

- |                         |                          |                          |                 |
|-------------------------|--------------------------|--------------------------|-----------------|
| 1 Rocky Mountain Bolder | Chris Messick            | Lla Mariposa Llamas      | Monte Vista, CO |
| 2 Cl. Irzuz             | Jill Redenbarger         | Winding Trails Llama     | Golden, CO      |
| 3 Rainbow's Lyon King   | Kelcee Dickman           | Dickman's Rainbow Llamas | Thedford, NE    |
| 4 Cee Cee               | Hanna Paerschke O'Brien  | Itty Bitty Ranch         | Golden, CO      |
| 5 Puchini               | Nathan Paerschke O'Brien | Itty Bitty Ranch         | Golden, CO      |
| 6 Keat 3                | Justin Chenoweth         | Jones Creek Llamas       | Pine, CO        |

**YOUTH JUNIOR SHOWMANSHIP**

- |                           |                  |                        |                      |
|---------------------------|------------------|------------------------|----------------------|
| 1 Kodiak                  | David Hoover     | Stage Stop Llamas      | Florissant, CO       |
| 2 Tamarack Wild One       | Cameron Baker    | Tamarack Llamas, Inc.  | Lynnport, PA         |
| 3 P.P.W. Cosmo            | Alissa Veuthey   | Dancing Pines Ranch    | Colorado Springs, CO |
| 4 Tintero                 | Gabi Von Roedern | Bear Track Farm        | Golden, CO           |
| 5 Touch The Earth Mandela | Eirik Pyhtila    | Touch The Earth Llamas | Black Forest, CO     |
| 6 Cum Laude               | Tori Everhart    | Quakey Brake Llamas    | Cory, CO             |

**YOUTH INTERMEDIATE SHOWMANSHIP**

- |                 |                  |                        |                 |
|-----------------|------------------|------------------------|-----------------|
| 1 Cameo's Nitro | Marty Johnson    | Roman Farms            | Bend, OR        |
| 2 New Shoes     | Holly Fleming    | Whispering Woods Ranch | Oregon City, OR |
| 3 WWW Egnog     | Ronnie Egnot     | Renaissance Llamas     | Plain City, OH  |
| 4 Holy Moses    | Heidi Kauffman   | Dusty Britches Ranch   | Castle Rock, CO |
| 5 Barbarosa     | Jeanne McGonegal | Dusty Britches Ranch   | Castle Rock, CO |
| 6 Bandy         | Summer Lillie    | Rocky Canyon Ranch     | Lyons, CO       |

**ADVANCED PUBLIC RELATIONS**

- |                          |                 |                        |                 |
|--------------------------|-----------------|------------------------|-----------------|
| 1 Cameo's Nitro          | Marty Johnson   | Roman Farms            | Bend, OR        |
| 2 Rocky Mountain Bounce  | Bobra Goldsmith | Rocky Mountain Llamas  | Longmont, CO    |
| 3 RF Double Nickel       | Marty Johnson   | Roman Farms            | Bend, OR        |
| 4 DLR Winsome Winchester | John Stout      | Diamond Link Ranch     | Glade Park, CO  |
| 5 Sunset Cadet           | Bart Anderson   | Twin Peaks Llama Farm  | Platteville, CO |
| 6 GL Master Jeremy Stone | Deann Pierce    | Victorian Place Llamas | El Reno, OK     |

**NOVICE PUBLIC RELATIONS**

- |                       |                   |                       |                      |
|-----------------------|-------------------|-----------------------|----------------------|
| 1 PPW Tuffy           | Harold Herbold    | Pikes Peaks Woolies   | Colorado Springs, CO |
| 2 PHF Nambe           | Sharon Beacham    | Pheasant Hill Farm    | Boulder, CO          |
| 3 PVLH Holiday Spirit | Ron Baird         | Plum Valley Llamas    | Sedalia, CO          |
| 4 PPW Domino          | Harold Herbold    | Pikes Peaks Woolies   | Colorado Springs, CO |
| 5 Bespeckled          | Gretchen Kauffman | Dusty Britches Llamas | Castle Rock, CO      |
| 6 Juan Platano        | Marty Johnson     | Roman Farms           | Bend, OR             |

**YOUTH INTERMEDIATE PUBLIC RELATIONS**

- |                    |                   |                        |                  |
|--------------------|-------------------|------------------------|------------------|
| 1 RF Double Nickel | Marty Johnson     | Roman Farms            | Bend, OR         |
| 2 Talavi           | Ben Riggs         | Bear Track Farm        | Golden, CO       |
| 3 Roman Centurion  | Lloyd Wamsley     |                        | Golden, CO       |
| 4 Mr. Black Cat    | Sara Atkinson     | Misara Llama Ranch     | Fleming, CO      |
| 5 Bespeckled       | Gretchen Kauffman | Dusty Britches Ranch   | Castle Rock, CO  |
| 6 MTSL Vanguard    | Sarah Funke       | Touch The Earth Llamas | Black Forest, CO |

**YOUTH JUNIOR PUBLIC RELATIONS**

- |                |                     |                      |                      |
|----------------|---------------------|----------------------|----------------------|
| 1 P.P.W. Cosmo | Alissa Veuthey      | Dancing Pines Ranch  | Colorado Springs, CO |
| 2 Barbarosa    | Levi Kauffman       | Dusty Britches Ranch | Castle Rock, CO      |
| 3 PPW Domino   | Adrienne Bergenfeld | Pikes Peak Woolies   | Colorado Springs, CO |
| 4 Tintero      | Gabi Von Roedern    | Bear Track Farm      | Golden, CO           |
| 5 PPW Amigo    | Jessie Katz         | Pikes Peaks Woolies  | Colorado Springs, CO |
| 6 PPW Tuffy    | Erin Sciacca        | Pikes Peaks Woolies  | Colorado Springs, CO |

**PERFORMANCE GRAND CHAMPION**

- |               |               |             |          |
|---------------|---------------|-------------|----------|
| Cameo's Nitro | Marty Johnson | Roman Farms | Bend, OR |
|---------------|---------------|-------------|----------|

**PERFORMANCE RESERVE CHAMPION**

- |                       |                 |                       |              |
|-----------------------|-----------------|-----------------------|--------------|
| Rocky Mountain Bounce | Bobra Goldsmith | Rocky Mountain Llamas | Longmont, CO |
|-----------------------|-----------------|-----------------------|--------------|

**NOVICE PERFORMANCE GRAND CHAMPION**

- |            |                   |                      |                 |
|------------|-------------------|----------------------|-----------------|
| Bespeckled | Gretchen Kauffman | Dusty Britches Ranch | Castle Rock, CO |
|------------|-------------------|----------------------|-----------------|

**NOVICE PERFORMANCE RESERVE CHAMPION**

- |                          |           |                 |            |
|--------------------------|-----------|-----------------|------------|
| Colorama's Silver Bullet | Ben Riggs | Bear Track Farm | Golden, CO |
|--------------------------|-----------|-----------------|------------|

**FIBER CONTEST**

- |                     |                       |                   |                      |
|---------------------|-----------------------|-------------------|----------------------|
| 1 Silver Nitrate    | Roger Miller          | Escarpment Llamas | Colorado Springs, CO |
| 2 Lady Sweet Dreams | Roger Miller          | Escarpment Llamas | Colorado Springs, CO |
| 3 The American      | Stever & Kathy London | Dusty Llamas      | Longmont, CO         |

**SPINNER'S CHOICE**

- |               |                |                     |               |
|---------------|----------------|---------------------|---------------|
| 1 Marco Polo  | Melanie Rojko  | Wind's Teeth Llamas | Fairplay, CO  |
| 2 Aussie Gold | Maggie Schuler | Bauernheim Llamas   | Eastsound, WA |
| 3 KFC         | Maggie Schuler | Bauernheim Llamas   | Eastsound, WA |



**Food !**



# Blue Magic of Tunitas

\*Macho Camacho

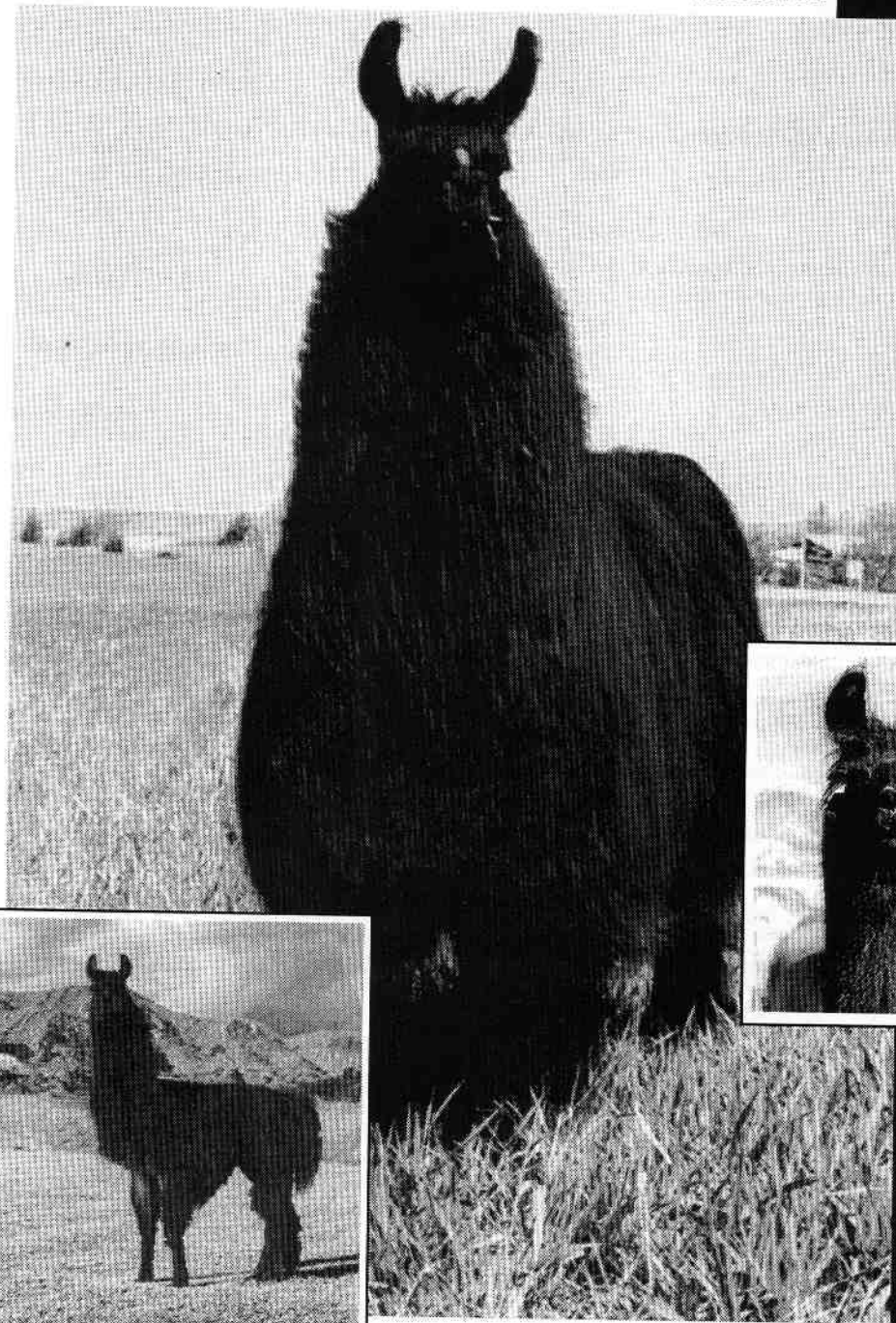
Bobbie Sue

HUFF RANCH MAGIC MACHO X BLUE BELL PL

Eclipse PL

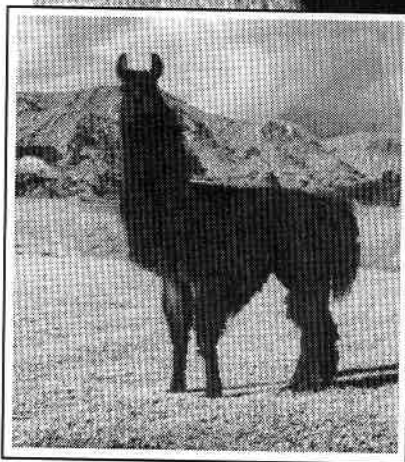
Anna Bell PL

It makes sense that when we breed llamas we breed with the intention of achieving optimum quality offspring. Blue Magic does just that by passing on his silky quality fleece, large bone, superb presence and his proven bloodlines give added assurance to your investment. When choosing a sire for your special female, ensure the quality that you desire. Blue Magic, just doing what a great sire should do.



**BML KIMINI**

*Blue Magic & Sheika*



Blue Magic shorn - Spring 1995

- Excellent Clean Facilities
- Precise Documentation of Each Breeding and Behavior
- Choice Hay and Pasture Offered
- Competitive Service Fee
- Live Birth Guarantee

**BURNING MOUNTAIN LLAMAS**  
LEN HENNIG

0187 ROAD 251 • RIFLE, COLORADO 81650 • PHONE (970) 625-3611

# 1996 Estes Park Wool Market ALPACA SHOW

## Judge: Maggie Kreiger • Announcer: Barbara Hance

### Agility Donations:

Doug and Judy Brown	Marquita Ranch Alpacas
Allan and Leah Dewald	Alpacas of Canyon Ridge
Bob and Barbara Hance	Hance Ranch
Mike Safley	Northwest Alpacas
Donald and Julie Otis Skinner	Snowmass Alpacas

### Trophies by:

Chris and Phil Switzer	SwitzerLand Alpacas
------------------------	---------------------

### Male

1 Antonio	Northwest Alpacas	
2 Peruvian Glacier	Snowmass Alpacas	
3 Peruvian Cuzco	Pacific Crest Alpacas	Greg Mecklem
4 NWA, Ltd. Baltazar	Northwest Alpacas	
5 S. Peruvian Snowmaster	Snowmass Alpacas	
6 Peruvian Pichu	Snowmass Alpacas	
7 Peruvian Paqocha	Snowmass Alpacas	
8 Pperuvian El Patrone	Peruvian Alpacas of Colorado	Mary Goodman
9 Sir Titus	Mile High Alpacas	
10 Wolf Den Lobo	Wolf Den Ranch Alpacas	
11 Peruvian Odo	Pacific Crest Alpacas	Karl Mecklem

### White

### Sponsored by Northwest Alpacas

### HUACAYA

### JUVENILE

### HALTER

### Female Black, Dark Brown, Light Brown Sponsored by Hance Ranch

1 NWA, Ltd. Brownie	Northwest Alpacas	
2 NWA, Ltd. Hanna	Northwest Alpacas	
3 Snowmass Golden Glow	Snowmass Alpacas	
4 Snowmass Shachiko	Snowmass Alpacas	
5 Tinaia	Stewart's Royal Alpacas	Helen Stewart

### Female White Sponsored by Northwest Alpacas

1 NWA, Ltd. Marcie	Northwest Alpacas	
2 S. Peruvian Lace	Snowmass Alpacas	
3 Hattie	Northwest Alpacas	
4 Peruvian Fidelity	Snowmass Alpacas	
5 Volvolina	Pacific Crest Alpacas	Greg Mecklem
6 S. Peruvian Esparanza	Snowmass Alpacas	
7 MSA Sorpresa	Morning Sun Alpacas	
8 Peruvian Andean Song	Snowmass Alpacas	
9 Peruvian Christmist	Snowmass Alpacas	
10 Miss Sasha	Marquita Ranch Alpacas	Darlene Brown
11 Kabuki	Fireweed Ranch	Pamela Ray
12 Bravo's Ghost	Stewart's Royal Alpacas	Helen Stewart

### Female Dark Fawn

1 NWA, Ltd. Jean	Northwest Alpacas	
2 Bonnie Brae	Mile High Alpacas	Caryl Loner
3 MSA Leonnais	Morning Sun Alpacas	

### Male Black, Dark Brown Sponsored by Switzer-Land Alpacas

1 Mon Capitaine	Serendipity Farm	Marie Hinds
2 Sargent Major	Cottonwood Farm Alpacas	Michael Guidry
3 Finae	Shear Delight Fiber	Gary Johnson
4 Bandit	Shear Delight Fiber	

### Male Light Brown Sponsored by Hance Ranch

1 Canela	Alpacas of Colorado	Sue Scott
2 NWA, Ltd. Luminosa	Northwest Alpacas	
3 Marathon	Pacific Crest Alpacas	Greg Mecklem
4 MRA Little Bear	Marquita Ranch Alpacas	Judy Brown
5 S. Peruvian Aztec	Snowmass Alpacas	
6 NWA, Ltd. Hector	Northwest Alpacas	

### Light Fawn

### Sponsored by Snowmass Alpacas

1 S. Peruvian Olympus	Snowmass Alpacas	
2 Killimanjaro	Alpacas of Colorado	Sue Scott
3 Valentino	Pacific Crest Alpacas	Greg Mecklem
4 Boris	Hance Ranch	Mary Hance
5 Andres Gallaraga	Fireweed Ranch	Pamela Ray
6 Peruvian Sundance	Snowmass Alpacas	
7 Peruvian Cimmaron	Snowmass Alpacas	

### Male Dark Fawn

### Sponsored by Switzer-Land Alpacas

1 S. Peruvian Cuzcoro	Snowmass Alpacas	
2 Snowmass Del Sol	Snowmass Alpacas	
3 Bayswater Dakota	Aussie Acres	Diana Timmerman
4 Johnny Rocket	Mile High Alpacas	Jaclyn Loner

### Male Fancy, Gray

1 NWA, Ltd. Reno	Northwest Alpacas	
2 Jeff's Congo	Aussie Acres	Diana Timmerman

### HUACAYA

### YEARLING

### Female Dark fawn, Light Fawn (Demonstration)

1 NWA Valentine	Northwest Alpacas	Mike Safley
2 Peruvian Solomon's Pride	Enchantment Farm Alpacas	Ann Evans

### Male

### Light Brown, Dark Brown

1 Peruvian Valour	Snowmass Alpacas	
2 Kodiak	Aussie Acres	Diana Timmerman
3 Koyemsi	Kopavi Ranch	Tony Simon

### Male

### White, Light Fawn, Dark Fawn

1 Peruvian Sensation	Enchantment Farm Alpacas	Ann Evans
2 Reebok	Pacific Crest Alpacas	Greg Mecklem
3 Gold Crown	Enchantment Farm Alpacas	Ron Hinds
4 Sweet's Brown Sugar	Hance Ranch	Mary Hance

### HUACAYA

### Female

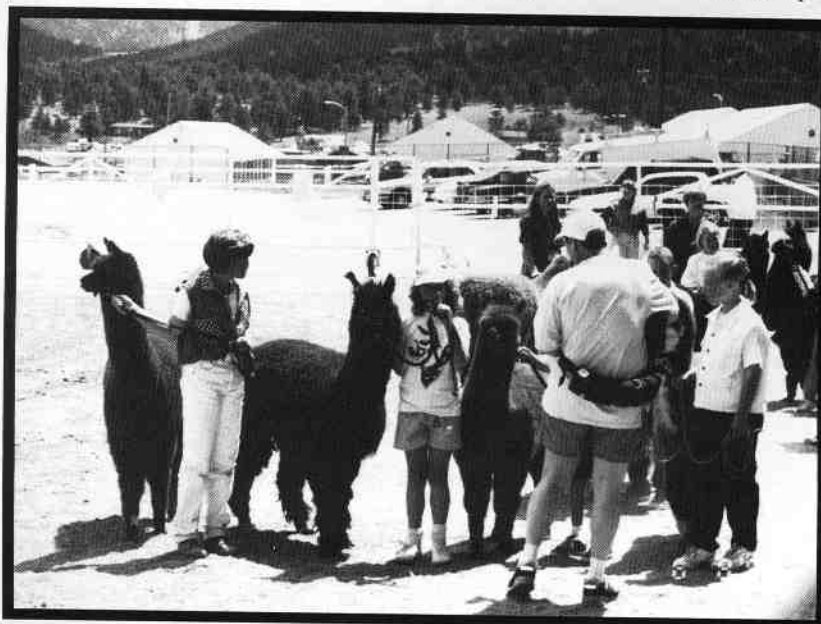
### White

### TWO YEAR OLD

### (Demonstration)

Mini Pearl	Snowmass Alpacas	
------------	------------------	--

### HALTER



**Alpacas and Kids.....**

**EPWM ALPACA SHOW, cont**

<b>HUACAYA</b>	<b>TWO YEAR OLD</b>	<b>HALTER, cont</b>
<b>Male</b>	<b>Black (Demonstration)</b>	
Shadow Grande	Serendipity Farm	Marie Hinds
<b>HUACAYA</b>	<b>ADULT</b>	<b>HALTER</b>
<b>Male</b>	<b>White, Light Fawn</b>	
1 Peruvian Drambuie	Snowmass Alpacas	
2 Peruvian Don Julio	Snowmass Alpacas	
3 Pperuvian Auzengaté	Pacific Crest Alpacas	Greg Mecklem
<b>Male</b>	<b>Dark Brown (Demonstration)</b>	
Dr. Pat	Serendipity Farm	Marie Hinds
<b>HUACAYA</b>	<b>SENIOR ADULT HALTER</b>	
<b>Male</b>	<b>White (Demonstratio)</b>	
1 Pperuvian Antonio	Cottonwood Farm Alpacas	Michael Guidry
2 Pperuvian ABAD	Belfry Alpacas	Linda Batt
<b>SURI</b>	<b>JUVENILE HALTER</b>	
<b>Female</b>	<b>White, Light Fawn</b>	
1 Suri Alpaca (Pending)	Wilkins Livestock LLC	Craig Wilkins
2 Maddie	Alpaca Jack's Suri Farm	Miriam Donaldson
<b>Male</b>	<b>White, Light Fawn</b>	
1 Suri Alpaca (Pending)	Wilkins Livestock LLC	Craig Wilkins
2 Repete	Alpaca Jack's Suri Farm	Jack Donaldson
3 Pete	Alpaca Jack's Suri Farm	
4 Rob Roy	Alpaca Jack's Suri Farm	
5 Cesario	Alpaca Jack's Suri Farm	Miriam Donaldson
<b>SURI</b>	<b>YEARLING HALTER</b>	
<b>Female</b>	<b>White (Demonstration)</b>	
Miss Moonbeam	Stewart's Royal Alpacas	Helen Stewart
<b>SURI</b>	<b>TWO YEAR OLD</b>	<b>HALTER</b>
<b>Male</b>	<b>White (Demonstration)</b>	
Premio	Hance Ranch	Mary Hance


<b>SURI</b>	<b>ADULT HALTER</b>
<b>Male</b>	<b>White (Demonstration)</b>
Pperuvian Juan	Alpaca Jack's Suri Farm
<b>AGILITY</b>	<b>SUB-JUNIOR</b>
1 JC's Delight	Marquita Ranch Alpacas
2 Jeff's Congo	Aussie Acres
3 Johnny Rocket	Mile High Alpacas
4 Athena	Marquita Ranch Alpacas
<b>AGILITY</b>	<b>JUNIOR</b>
1 Dr. Pat	Serendipity Farm
2 Indy Independence	Aussie Acres
3 Canella	
4 Bonnie Brae	Mile High Alpacas
5 Maxell	Santa Rosa Alpacas
6 Bayswater Dakota	Aussie Acres
7 Tia's Dark Star	Cottonwood Farm Alpacas
8 Cavallero	Santa Rosa Alpacas
<b>AGILITY</b>	<b>ADULT</b>
1 Peruvian Solomon's Pride	Enchantment Farm Alpacas
2 SRA Tonto	Stewart's Royal Alpacas
3 Sokratees	Hance Ranch
4 LGLA Bambi	Roy-Dee's
5 Gold Crown	Enchantment Farm Alpacas
6 Peruvian Odo	Pacific Crest Alpacas
7 Sir Titus	Mile High Alpacas
8 Pperuvian Solomon's Pride	Peruvian Alpacas of Colorado
<b>COSTUME</b>	
1 Johnny Rocket	Mile High Alpacas
2 Bonnie Brae	Mile High Alpacas
3 Sokratees	Hance Ranch
	Ann Evans
	Helen Stewart
	Mary Hance
	D. Stoddard
	Diana Mecklem
	Sharon Loner
	Mary Goodman
	Jenny Brown
	Kate Armstrong
	Jaclyn Loner
	Kevin Flavi
	Sarah Thomas
	Hollie Ulrich
	Brianna Scott
	Carly Loner
	Michael Flavin
	Jill Ulrich
	Simone Guidry
	Meghan Flavin



**ALPACA BREEDERS OF THE ROCKIES DEBUT AT THE ESTES PARK WOOL MARKET**

By Robbie Guidry


Alpaca Breeders of the Rockies is proud to become a part of the Estes Park Wool Market tradition. Among those who helped make it possible were Barb Hance who coordinated our alpaca seminars. Sue Scott, Susie Leonard and Ron Hinds promoted and advertised the alpaca portion of the event. Judy Brown supervised the alpaca tent demonstrations along with Leah Dewald. Phil Switzer and Ron Hinds managed the alpaca tent and the ALSA Show. Maggie Johnson coordinated a host of volunteers to oversee the vendor's booth. Bev Anderson coordinated the fleece judging event. We wish to show our appreciation to our speakers Dr. LaRue Johnson, Mike Safley and Chris Switzer. We also wish to thank Maggie Kreiger who served as the ALSA alpaca judge and RoseAnn Knoblock who served as the alpaca fleece judge (and Robbie who coordinated the committees, *ed.*). ABR wants to especially thank Linda Hinze, the Estes Park Wool Market Coordinator. This is a great event sponsored by two wonderful organizations. Congratulations to all the llama and alpaca winners. We are happy to be sponsors of the Estes Park Wool Market and plan to be there next year, with bells on!



**log hill llamas & alpacas**

- Llamas
- Alpacas
- Fiber

Tom & Anne Harper      3868 Ouray Co. Rd. 22-A  
 Montrose, CO 81401  
 970/249-2516



**HANCE RANCH**

**ALPACAS**  
**FIBER**  
**LLAMAS**

**OWNERS**  
**ROBERT & BARBARA HANCE**  
 11818 W. 52ND AVE.  
 WHEAT RIDGE, CO 80033  
 (303) 422-4681

**MANAGER**  
**MARY HANCE**  
 11855 W. 52ND AVE.  
 WHEAT RIDGE, CO 80033  
 (303) 467-3261

# 1996 Intermountain Llama Classic, May 24, 25, and 26, 1996, Logan, UT

Show Superintendents: Linda Kyriopoulos and Daryl Wood; Judge: Ron Baird

## MALES LIGHT/MEDIUM WOOL

### JUVENILE

- |    |                       |              |
|----|-----------------------|--------------|
| 1. | Power Ranger          | Judy Sealy   |
| 2. | Wind River's McMurphy | Anne Johnson |
| 3. | Einstein              | Stan Sjol    |

### YEARLING

- |    |                  |               |
|----|------------------|---------------|
| 1. | Pedro de Tom-Tom | Stan Sjol     |
| 2. | Thunder Boy      | Wes Holmquist |
| 3. | Thunder Buck     | Wes Holmquist |

### TWO-YEAR OLDS

### CHAMPION

Nitro Marty Johnson

### RESERVE CHAMPION

HLR Padparadschaw Cliff Harding

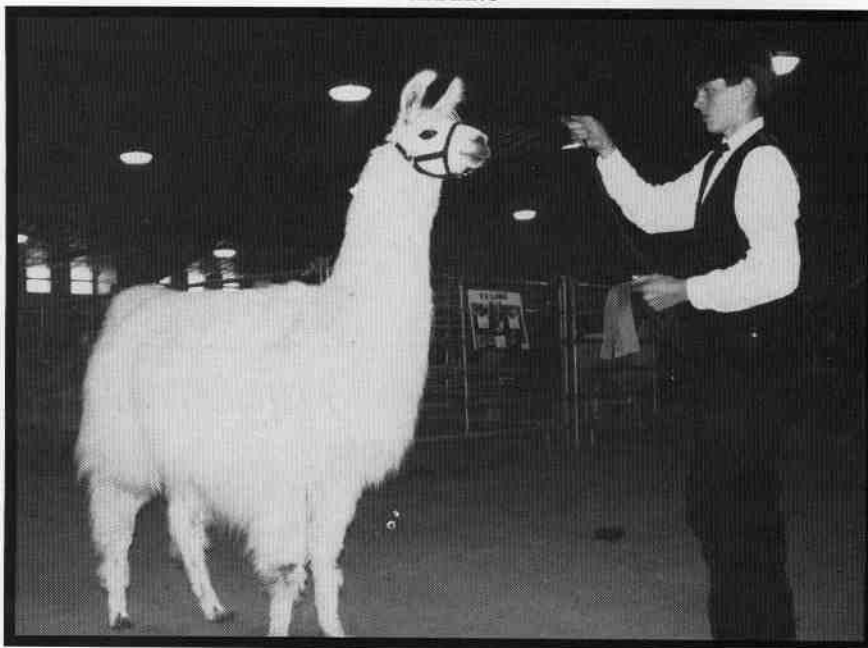
## FEMALES LIGHT/MEDIUM WOOL

### JUVENILE

- |    |                          |                             |
|----|--------------------------|-----------------------------|
| 1. | Sterling Springs Athena  | Andrea Kyriopoulos          |
| 2. | Limberlost's Serendipity | Daryl Wood                  |
| 3. | Snow Leopard             | Steve and Linda Kyriopoulos |

### YEARLING

Photo by Jim Osmun



**Marty Johnson and Nitro**

- |    |                        |                     |
|----|------------------------|---------------------|
| 1. | DLR Winsome Winchester | John Stout          |
| 2. | Double Nickel          | Marty Johnson       |
| 3. | Cyrs                   | Dick and Jo Sheehan |

### ADULT

- |    |                           |                             |
|----|---------------------------|-----------------------------|
| 1. | Fern's Mick Dundee        | Daryl Wood                  |
| 2. | GNLC Luck of the Draw     | Stephen and Christy Long    |
| 3. | Wind River of Squaw Creek | Steve and Linda Kyriopoulos |

### CHAMPION

Power Ranger Judy Sealy

### RESERVE CHAMPION

DLR Winsome Winchester John Stout

## MALES HEAVY WOOL

### JUVENILE

- |    |                         |                |
|----|-------------------------|----------------|
| 1. | Hakuna Matata           | Vikki Everhart |
| 2. | Austin Houston          | Vikki Everhart |
| 3. | Melinka's Cinnamon Bear | Jason Chabot   |

### YEARLING

- |    |                     |                     |
|----|---------------------|---------------------|
| 1. | HLR Padparadschaw   | Cliff Harding       |
| 2. | Bodacious de Manana | Mike and Deb McKeon |
| 3. | WinDragon           | Maren Bergeson      |

### TWO-YEAR OLDS

- |    |                 |                          |
|----|-----------------|--------------------------|
| 1. | HLF Silver King | Gale and Marge Armstrong |
|----|-----------------|--------------------------|

### ADULT

- |    |           |                                     |
|----|-----------|-------------------------------------|
| 1. | Nitro     | Marty Johnson                       |
| 2. | Cum Laude | Vikki Everhart and RoseMary Zeschin |
| 3. | Albatar   | Mark Tanner                         |

- |    |                        |                |
|----|------------------------|----------------|
| 1. | Rainbow Valley's Micka | Reid Langernia |
| 2. | Limberlost's Mareze    | Daryl Wood     |
| 3. | Tulane                 | Darlene Rankin |

### TWO-YEAR OLDS

- |    |                       |                    |
|----|-----------------------|--------------------|
| 1. | Teton Stardust        | Kari Archibald     |
| 2. | Sterling Springs Aura | Andrea Kyriopoulos |

### CHAMPION

Rainbow Valley's Micka Reid Langerman

### RESERVE CHAMPION

Teton Stardust Kari Archibald

## FEMALES HEAVY WOOL

### JUVENILE

- |    |               |                  |
|----|---------------|------------------|
| 1. | Lady Jordette | RoseMary Zeschin |
| 2. | Kilee         | D. Stoddard      |
| 3. | Josafina      | Cliff Harding    |

### YEARLING

- |    |                         |                          |
|----|-------------------------|--------------------------|
| 1. | Betty Boop              | Gale and Marge Armstrong |
| 2. | DLR Twinkle Tiffany     | Jane Stout               |
| 3. | Meri Marquesa de Manana | Mike and Deb McKeon      |

### ADULT

- |    |                |                          |
|----|----------------|--------------------------|
| 1. | Hammer's Belle | Gale and Marge Armstrong |
| 2. | HRL Marcella   | D. Stoddard              |

### CHAMPION

Betty Boop Gale and Marge Armstrong



1996 Intermountain Llama Classic, cont.

**RESERVE CHAMPION**

Hammer's Belle

Gale and Marge Armstrong

**SHOWMANSHIP CLASSES**

**YOUTH**

1. Llasa's Kris Be Kritter
2. GNLC Luck of the Draw
3. Paco

Rebecca Walker  
Robert Long  
Katelyn Black

**INTERMEDIATE**

1. Nitro
2. Double Nickel
3. Fern's Mick Dundee

Marty Johnson  
Jason Chabot  
Marissa Wood

**NON-BREEDER GRAND CHAMPION**

Wind River's Whitman

Anne Johnson

**NON-BREEDER RESERVE CHAMPION**

Tuxedo's Flint

Daryl Wood

**GET-OF-SIRE**

Fern's Mick Dundee

Daryl Wood

**OPEN OBSTACLE**

1. Nitro
2. Double Nickel
3. DLR Winsome Winchester

Marty Johnson  
Marty Johnson  
John Stout

**OPEN PACK LLAMA**

1. Fern's Mick Dundee
2. Nitro
3. Tuxedo's Flint

Daryl Wood  
Marty Johnson  
Daryl Wood

**YOUNG PACK LLAMA**

1. Double Nickel
2. DLR Winsome Winchester
3. Cyrs

Marty Johnson  
John Stout  
Dick and Jo Sheehan

**OPEN PUBLIC RELATIONS LLAMA**

1. Double Nickel
2. DLR Winsome Winchester
3. Tulane

Marty Johnson  
John Stout  
Darlene Rankin

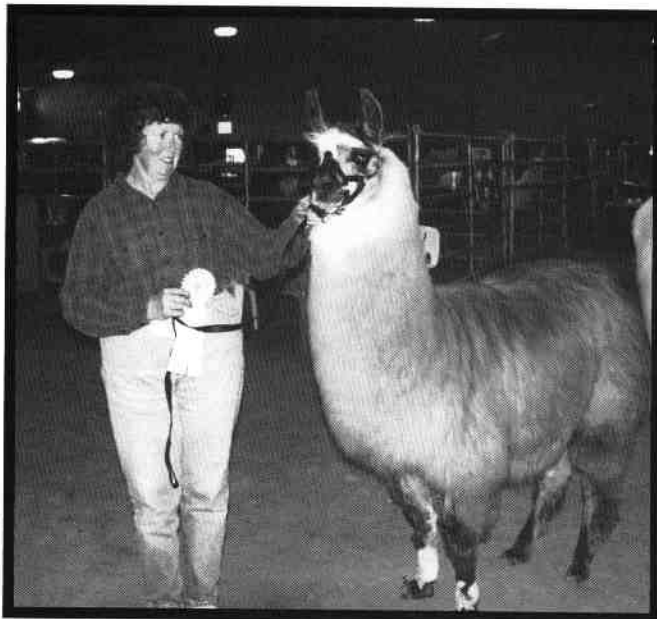
**YOUTH OBSTACLE**

1. Nitro
2. Melinka's Cinnamon Bear
3. Paco

Marty Johnson  
Jason Chabot  
Katelyn Black



Photo by Jim Osmun



**Judy Sealy and Power Ranger**



**ROLLING ROCK LLAMAS**

Pat & John Miltzer  
1190 Marshall Road  
Boulder, CO 80303  
(303) 494-8219

*Ready-Made & Sewing Kit  
Pack Systems*

**HIGH HOPES LLAMAS**

Stan Lacher  
Gail Segreto

P.O. Box 506, Elizabeth, CO 80107 • 303-646-0989

# New Mexico Spring Fling

by Lougene Baird and Rick Steadham

The first annual New Mexico Spring Fling ALSA Show, judged by Linda Hayes, was held on the Pederson ranch outside Las Vegas, New Mexico. The first weekend in May offered up warm spring weather and a wonderful way to start the summer show season in the Rocky Mountain Region. What started out to be a Class I show with 40 exhibitors doubled in the last few days. Superintendents were Rick Steadham and Karen Sterling with lots of help from their kids. The obstacle courses were typically challenging for the region.

Rick and Karen treated all exhibitors to a wonderful Bar-B-Q at their ranch on Saturday night. Conversations went on into the night under the New Mexico starlight at Shining Star Ranch.

Rick and Karen presented the show proceeds of \$550 to RMLA Research Committee. Thanks to all who volunteered to make this a successful show.

## SHOW RESULTS

### Light/Medium Wool Juvenile Male:

- |                |                |
|----------------|----------------|
| 1. Syenite     | Joyce Johnston |
| 2. Dakota Gold | Pam Fannon     |

### Light/Medium Wool Yearling Male:

- |             |                |
|-------------|----------------|
| 1. Broily   | Leona Pchelkin |
| 2. Ricochet | Pam Fannon     |

### Light/Medium Wool Two-Year Old Male:

- |                  |                |
|------------------|----------------|
| 1. Pablo Picasso | Donley Gardner |
| 2. Macho's Jake  | Carol Marthens |

### Light/Medium Wool Adult Male:

- |              |                  |
|--------------|------------------|
| 1. Malcolm X | Kevin McCullough |
| 2. Darnion   | Bill Bacus       |

### Grand Champion Light/Medium Wool Male:

- |           |                  |
|-----------|------------------|
| Malcolm X | Kevin McCullough |
|-----------|------------------|

### Reserve Champion Light/Medium Wool Male:

- |         |                |
|---------|----------------|
| Syenite | Joyce Johnston |
|---------|----------------|

### Light/Medium Wool Juvenile Female:

- |                     |                |
|---------------------|----------------|
| 1. Chrysololla      | Donley Gardner |
| 2. Mystika's Stormy | Mystika Scott  |

### Light/Medium Wool Yearling Female:

- |                 |                |
|-----------------|----------------|
| 1. PHF Alouette | Lougene Baird  |
| 2. Pale Moon    | Carol Marthens |

### Light/Medium Wool Two-Year Old Female:

- |                   |                |
|-------------------|----------------|
| 1. Mariposa       | Joyce Johnston |
| 2. Tip Toe Bandit | Ruth Jordan    |

### Light/Medium Wool Adult Female:

- |          |             |
|----------|-------------|
| 1. Misty | Jody Fuller |
|----------|-------------|

### Grand Champion Light/Medium Wool Female:

- |              |               |
|--------------|---------------|
| PHF Alouette | Lougene Baird |
|--------------|---------------|

### Reserve Champion Light/Medium Wool Female:

- |                 |                |
|-----------------|----------------|
| DOL Chrysololla | Donley Gardner |
|-----------------|----------------|

### Heavy Wool Juvenile Male:

- |                       |                 |
|-----------------------|-----------------|
| 1. JLL Kassinova      | Cindy Burgess   |
| 2. Gulliver's Travels | John McCullough |

### Heavy Wool Yearling Male:

- |                     |              |
|---------------------|--------------|
| 1. Zydeco's Phantom | Deann Pierce |
| 2. DDL Sugar Muffin | Jan Day      |

### Heavy Wool Two-Year Old Male:

- |                |                |
|----------------|----------------|
| 1. HH Fenwick  | Joyce Johnston |
| 2. Moody Blues | Sue Rivard     |

### Heavy Wool Adult Male:

- |                   |                 |
|-------------------|-----------------|
| 1. Andean Spirit  | John McCullough |
| 2. Peruvian Fuego | John McCullough |

### Grand Champion Heavy Wool Male:

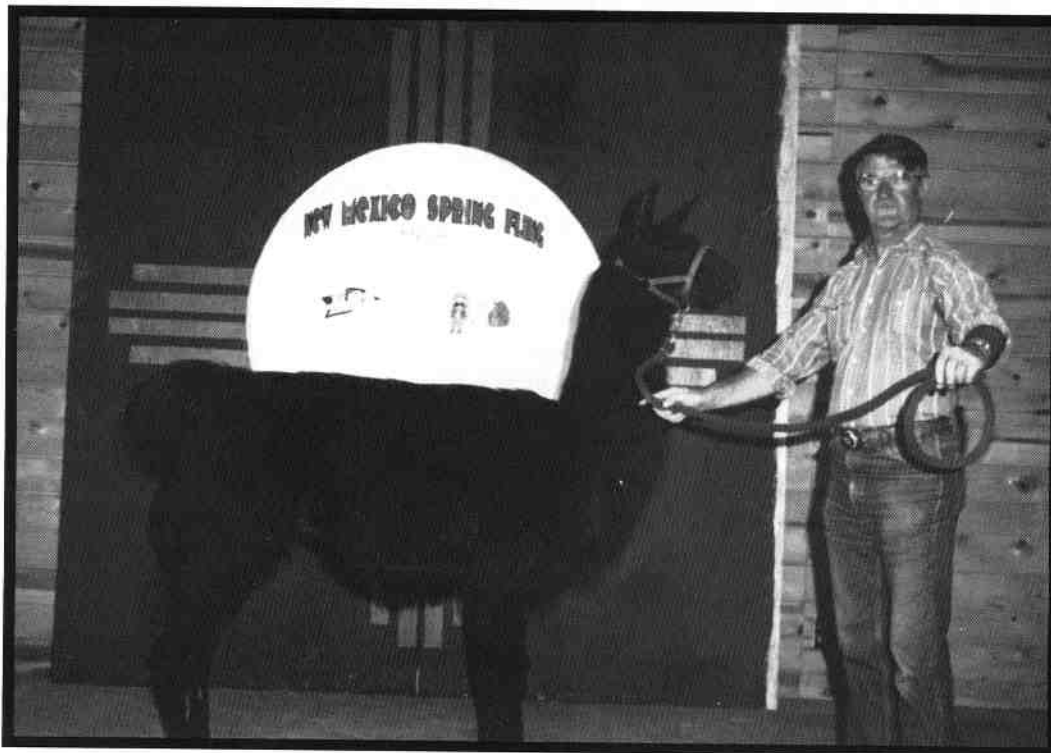
- |               |                 |
|---------------|-----------------|
| Andean Spirit | John McCullough |
|---------------|-----------------|

### Reserve Champion Heavy Wool Male:

- |            |                |
|------------|----------------|
| HH Fenwick | Joyce Johnston |
|------------|----------------|



Ivy Potaracre with Prince Othello & Pepe



**Bill Bacus with Damion**

**Heavy Wool Juvenile Female:**

1. Holiday Lady
2. Calico Gal

**Heavy Wool Yearling Female:**

1. PPLP Ticaboo
2. Chocolate Bliss

**Heavy Wool Two-Year old Female:**

1. Black Eyed Susan
2. DbL Magdalena

**Grand Champion Heavy Wool Female:**

PPLP Ticaboo

**Reserve Champion Heavy Wool Female:**

Black Eyed Susan

**Best of Show at Halter**

Andean Spirit

**Adult Non-Breeder Halter:**

1. Old Spice
2. Michael

**Advanced Obstacle:**

1. Damion
2. Tabernash

**Novice Obstacle:**

1. HH Finwick
2. Syenite

**Advanced Public Relations:**

1. Andean Spirit
2. Damion

**Novice Public Relations:**

1. Jordan's Stormy
2. Michael

**Open Pack Obstacle:**

1. Damion
2. Old Spice

Lougene Baird  
Bob Houseman

Cindy Burgess  
Bob Houseman

Cindy Burgess  
Linda Contos

Cindy Burgess

Cindy Burgess

John McCullough

Kevin McCullough  
Troy Fuller

Bill Bacus  
Ron Baird

Bob Johnston  
Bob Johnston

John McCullough  
Bill Bacus

Ruth Jordan  
Troy Fuller

Bill Bacus  
Kevin McCullough

**Young Pack Obstacle**

1. Ghostdancer
2. Chilean Prime Time

**Grand Champion - Performance:**

Damion

**Reserve Champion Performance:**

Andean Spirit

**Junior Showmanship:**

1. Jordan's Stormy
2. Pale Moon

**Intermediate Showmanship:**

1. Chocolate Bliss
2. Old Spice

**Junior Obstacle:**

1. Jordan's Stormy
2. DDL Sugar Man

**Intermediate Obstacle:**

1. Old Spice
2. Macho's Jake

**Junior Public Relations:**

1. SSLR Twister
2. Jeromy Stone

**Intermediate Public Relations:**

1. Old Spice
2. Macho's Jake

**Grand Champion - Youth Exhibitor:**

Kevin McCullough

**Reserve Champion - Youth Exhibitor**

Shawn Strickland

John Stout  
Harvey Brock

Bill Bacus

John McCullough

Shaun Strickland  
Kimberly Steadham

LeaAnne Houseman  
Kevin McCullough

Shaun Strickland  
Cody Jacob

Kevin McCullough  
Georgia Moody

Beth Steadham  
Grant Brewer

Kevin McCullough  
Georgia Moody



**A BIG thanks to Rick Steadham and Karen Sterling, the superintendents, for a great fun show - and the show's \$550 generosity for medical research!**

# RMLA Wants to Recognize the Contributions of These Other Llama Organizations!

Recently, a new, completely revised, and expanded to include alpacas "Caring for Llamas and Alpacas" was published by RMLA. This is the 7th Edition of this very well received health care book by Ingrid Asmus and Claire Hoffman, DVM. The RMLA Medical Research Committee decided to ask other llama organizations for their help in announcing the new volume and bringing it to the attention of owners. It was felt this benefits the entire industry, as profits from the books' sales go toward medical research.

The response of the llama community was fantastic, showing the spirit of cooperation between regional organizations that can be solicited when and where our animals are concerned.

To date, the following llama groups have donated space in their publications - a full page or inserts - to Caring for Llamas and Alpacas. RMLA wants to give a big **THANKS** to them!

Alaska Llama & Alpaca Club	Michigan Llama Association
ALSA	Northern Rockies Llama Association
CAL-ILA	Ohio River Valley Llama Association (ORVLA)
Central Oregon Llama Association (COLA)	Pennsylvania Llama & Alpaca Association
Golden Plains Llama Association	South Central Llama Association (SCLA)
Hoosier Llama Association	Southern States Llama Association (SSLA)
LANA	Utah Llama Association (ULA)
Llama Association of Southern California	Willamette Valley Llama Association
Llama Association of Mid-Atlantic States (LAMAS)	
Llama Owners of Washington State (LOWS)	
Maine Llama Association	

Sales of the new edition are going great - so monies for medical research are increasing as a result. Thanks everybody - our speechless brothers (and sisters) appreciate it!

## NATIONAL CAMELID FIBER CO-OP

Two RMLA members, Sharon Beacham and Karen Kinyon, are involved in plans to start a National Fiber Co-op. They're setting up one of the regional collection points for shorn llama fiber. Each contributor will pay for their share of the processing and receive a percentage of the finished yarn. See the article, "Two Fiber Mavens", in the Spring '96 issue of *Llama Life* for details of how this project works. The goal is to eventually have a national collection point and yarn distributor.

All RMLA members are encouraged to participate in this new project, in addition to RMLA'S own Fiber Co-op. More information and guidelines for contributing llama fiber are available from:

Sharon Beacham: 2380-95th Street, Boulder, CO 80301 303•666•9437 or Karen Kinyon: 2933 East Mulberry, Fort Collins, CO 80524 970•484•6241



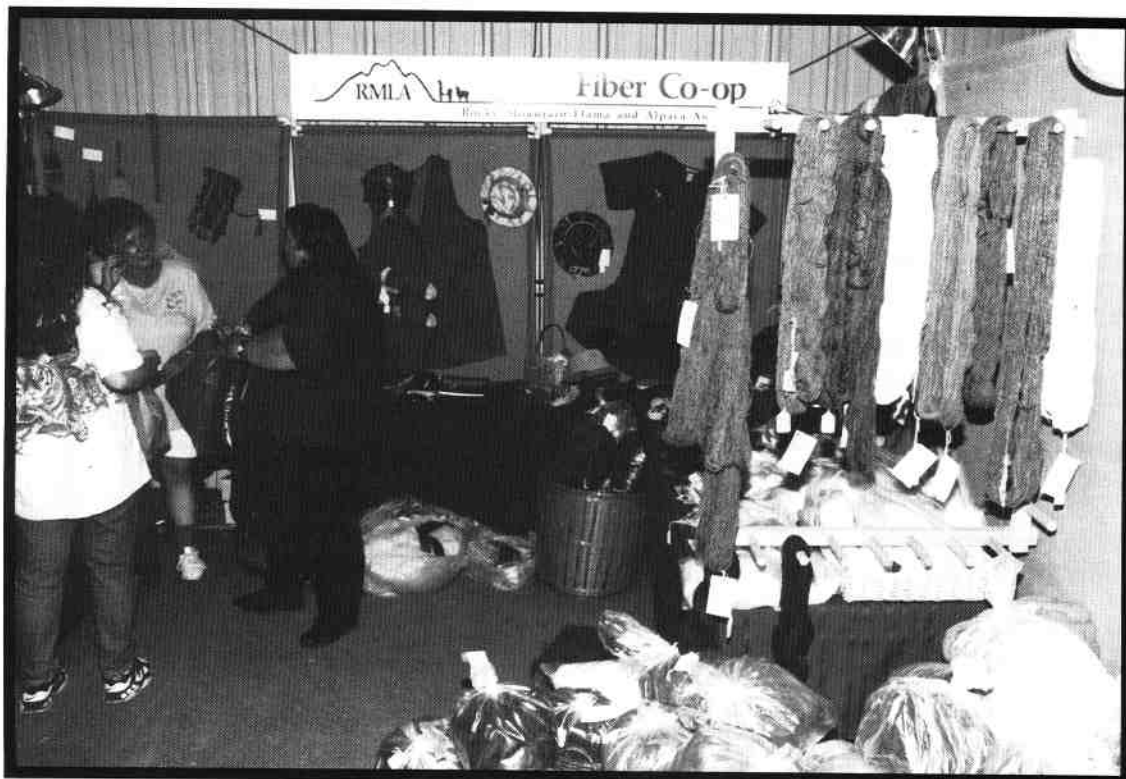
## UPDATE-RMLA FIBER CO-OP AT ESTES PARK WOOL MARKET

By KAREN KINYON • DOUBLE-K-DIAMOND RANCH • 2933 E. MULBERRY • FT. COLLINS, CO • 80524 • (970)484-6241

The RMLA Fiber Co-op Booth at the Estes Park Wool Market was very successful. We were pleased to have 11 consignors and we sold over \$ 1,500.00 in llama and alpaca fiber items. Consignors were: C.S.U. Llama Research Foundation, Judy Cox-Sample, Karla Goodman, Janel Greiner, Diane Jarvis, Karen Kinyon, Mary Mauz, Tom Van Velson, and RMLA (Caring For Llamas and Alpacas Books), Sally German, and Mike Brown. Many thanks go to Gay Robbins, Diane Jarvis, Judy Cox-Sample, Karla Goodman, Mercedes Petty, Janel and Grant Greiner, Tom Van Velson, and Sharon Beacham for helping in the booth during the two-day sale. Without their help and support it would not have been nearly the success that it was. We were pleased to have demonstrations Australian Locker Hooking, Drum Carding, Blending and Spinning during the sale.

We have been accepted at the Taos Wool Festival on September 28-29, 1996 so we are again asking everyone who is involved in RMLA and using Llama and Alpaca fiber to join in and consign to the RMLA Fiber Co-op. We will have our booth set up and everyone is welcome to participate. The more, the merrier!! After seeing what sold at Estes Park, we would like to have more finished items, and more color. We have lots of natural colors of Llama and Alpaca raw fleece, washed and carded roving and handspun yarn. Now we need dyed or blended colors, washed and carded roving, hand spun yarn and finished goods made from the dyed or blended fibers. Remember, they need to be at least 60% Llama or Alpaca and only natural fibers are allowed in the other 40%. Also, if you are shearing this summer, get that fiber processed and send it with us to Taos!! This is an excellent way to use that great fiber that we have all been saving forever! There is a list of fiber processors available from Sharon Beacham.

We are pleased with our first effort and look forward to another successful venture in Taos in September. If you would like to know more about becoming a consignor, please call Karen Kinyon at (970)484-6241 or Sharon Beacham at 1-800-465-2567. They are the new RMLA Fiber Mavens!!





# CLASSIFIED ADS



**HERD LIQUIDATION:** DOME ROCK LLAMAS has 5 females, 1 stud quality male and 1 gelded male. Excellent bloodlines, correct conformation. Priced separately or as a package. All offers considered. Also for sale, 5 x 10 x 6 insulated trailer \$2,500. 719•689•2382.

**SPINNING LLAMA AND ALPACA:** 44 page book by Chris Switzer. Sections on Origin, Fiber ID, Cleaning and Collecting, Shearing, Preparation, Blending, Dyeing, Spinning, Marketing and Selling, Storage of Wool, and Projects. \$10 plus \$1.60 postage and 3% Colorado Tax. Chris Switzer, Box 3800, Dept. R., Estes Park, CO 80517. 1/97

**FOR SALE:** Female llamas, yearlings and bred three year olds. One all white with gorgeous wool. Her daddy was MC Hammer! Show quality, wonderful wool, good dispositions. Reasonable prices. Please come see for yourself. Free 6-months of boarding with purchase. Call Pat in Boulder, CO for more information 303•494•8219. 8/96

**BANANA EARS REPUBLIC:** Thinking about Llamas? Beautiful bred females for sale. Also a MUST SEE cinnamon colored female weanling, destined to be a star. STUD SERVICE to RASPUTIN a great bargain at \$350.00. All Llamas and services with ranch guarantee. Give us a call at 303•838•5619. 8/96

**SERENITY LANE LLAMAS** - is offering the following excellent value llamas;  
 Ausome - DOB 6/95 (3/4 Chilean male). He's destined to be known. Son of \*Aus x Magnolia. Sire imported from New Zealand. Heavy golden & brown wool. \$2,500.  
 Augustien - DOB 8/95 (1/2 Peruvian female). Breeding age fall '96. \*Peruvian Bardo x Libertien. White w/ brown tail & facial markings, very correct and large boned. \$3,000.  
 Verona - DOB 9/93. Bred to full Chilean Monopoly. He's gorgeous, heavy wool & bone and an unbelievable presence. Due 8/10/96. \$4,500 before delivery of cria. Many other fine animals available. Package pricing on multiples.  
 Bill & Donna Brown - Phone & Fax 719/687-1224 8/96

**UNBELIEVABLE OPPORTUNITY:** How about a trade? Quality herd of llamas. Females bred to CAMEO's NAUTILUS; LIVORNO offspring: Packing age males; Young girls. Includes "Nauti" and an

outstanding 2 year old herd-sire prospect out of SAROS (multi-long wool champion). I will trade for mountain/foothills property, alpacas, equipment such as a pasture vac, scales, nice trailer. Other ideas? Give me a call. Will also consider sale of all or part of herd. Financing and delivery available. Contact Carol at CASTLE LLAMAS 970•484•3537.

**MALE & FEMALE LLAMAS FOR SALE** from the following lines: Range Rover (full Chilean). Richochet (full Chilean), Pliades (1/2 Chilean, 1/4 Bolivian), Macho's Ace, Aladdin, and Strawberry Fields (full Bolivian). Jerry McRoberts, Nebraska, 308•884•2371 8/96

**FOR SALE; PROOVEN APPALOOSA HERD SIRE** PHF Nambé (10-29-92). Grand Champion MW male '95 NWSS, Reserve Grand Champion MW male '95 EPWM. First place fiber '95 NWSS. Always places in obstacle courses. Please call for photos, etc. John & Sharon Beacham, Pheasant Hill Farm, Boulder, CO. 1•800•465•2567, or Denver area 303•666•9437

**USEFUL LLAMA ITEMS:** Halters, Leads, Grooming Supplies, Blowers, Shearing Equipment, Scales, Chutes, Laboratory Services, Veterinary Supplies, Llama Thermometers, Weather vanes, Farm Supplies, Manure Spreaders, Signs, Carts, Harnesses, Cria Kits, Fly Control, Minerals, Llama Watches, Check lower Midwestern prices and shipping costs. Rapid service, Brochure: 3540 - 76th., Caledonia, MI 49316, 1•800•635•5262. 8/96

**LOOKING FOR A GREAT SUMMER/FALL '97 CRIA?** T.J.'s Blackhawk (great wool, perfect conformation, fantastic presence) is willing to make your dream come true. He has sired many great looking kids. Call now to book a breeding. A BIG THANKS to Betty Robertson for sharing such a wonderful llama with us. If you can't wait a year for your own female's offspring, consider an extremely handsome, intelligent, curious Blackhawk son born 7.14.95. Give us a call. Cria Creek Ranch, 303•526•1425. 8/96

**SERENITY LANE LLAMAS** - conveniently located at 9000' just 25 miles northwest of Colorado Springs. Raising, breeding and selling llamas for showing and breeding since 1984. Very nice selection of Chilean, Bolivian, Peruvian and select North American woolies available at competitive prices. Call for details - you'll be glad you did.  
 Bill & Donna Brown - Woodland Park, Co. - Phone & Fax 719/687-1224 8/96

*Classifieds continued on next page !*

**MUST REDUCE OUR LLAMA HERD:** Our loss can be your gain. All ages, types, and colors (appaloosa, paint, bay, black, tuxedos), many females available. All offers considered and animals sell with written guarantees. Come see them in person or contact us for photos. Dolores, Colorado. (970) 882-7126 11/96

**MT. SOPRIS LLAMAS UNLTD:** Sopris Pack Equipment, Halters, Hay Feed Bags, Wool Apron, Quick Straps, Cria Warming Shawls. Plus: Books, Videos, Information Articles, Cards, Stillwater Minerals, Grooming, and Llama and Alpaca Care Products. Free Catalog: Females and Trained Packers for Sale. Pack Clinics 1•800•767•7479. 8/96

**PAINT SALE:** several young males to choose from, sweet tempered, variety of ages, (other colors also available) sired by GLL Java, starting at \$600. Also several females available, from weanlings to experienced, bred moms (bred to Java, Gandy Dancer, or 1/4 Bolivian, silky-wooled Ragin' Cajun); starting at \$2,000. Visit soon for best selection. Llamarage, Joe & Mary Beth Hartsough, 970•785•2463.

**ALPACAS FOR SALE:** Reasonable priced quality weanling, yearling, and pregnant females - Suri & Huacayas. Bravo Bravo and Rose Gray bloodlines available. Also have bred Llama. Chuck or Helen - Stewart's Royal Alpacas, 190 Steinmeier, Cañon City, CO 81212 719•275•2701. 8/96

**FOR SALE - Custom made grooming chute.** Light weight but very sturdy. Has wheel - easy to take to shows or handy to have for home grooming. Good for juvenile through adult animals. Folds down for easy transport or storage. Sturdy welded steel construction.. Used but in great condition. \$200 - call Lougene or Ron 303-688-5445. Can be shipped to you.

**QUITTING BUSINESS SALE.** Due to personal illness, selling ranch in beautiful southwestern Colorado and animals. ALPACAS, bred females with cria by side starting at \$10,000. Males, your choice, starting at \$1,500. LLAMAS, herd sires with outstanding blood lines \$1,000. PACKAGE DEALS. Log Hill Llamas & Alpacas 970•249•2516 email: aharper@gunnison.com

**The boys of SERENITY LANE** are available to you for limited outside breedings.

\***Monopoly** - (Chilean), Macho Camacho x Constance.

Formerly owned by Patterson Llamas & Inca Roads of Oregon. Full brother of Chalula, high selling female - Spring '95 Celebration. Heavy marbled gray, black & white wool. 400 Lbs. Excellent production. Many champions.

\***Calbert Cheaney** - (Bolivian), Mr. Kosciusko x L.W.

Serena - both imported. Hvy. jet black wool. 320 lbs. June '96 -2 1/2 years old. First cria due Fall '96.

\***Neebish** - (1/4 Bolivian), Crazy Mtn. Man x Bandola -

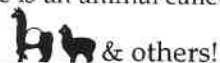
300 lbs. of extremely heavy golden & gray wool. 78% female production.

Call for details. Breedings & offspring available. Bill & Donna Brown 719/687-1224 8/96

**WANTED: USED LLAMA EQUIPMENT.** We buy and sell quality used equipment. Please contact Bart Anderson, Twin Peaks Llama Farm at (970) 535-4041, FAX (970) 535-4007 or email TwnPksLama@AOL.com We are located in Platteville, Colorado. 8/96

**Just for Your Information.....**

Remember Jerry McRobert's ad selling 5.10 yaks, 5.10 elk, etc in the last few issues? Well Sharon Beacham called Jerry. These numbers are what zoos use to designate numbers of males and females (in that order) of the species. Also, there is an animal called a 'wisent'.



## From the Editor(s):

Hi folks:

- There is a standing offer for articles on Llama Packing Systems, *still*. Limit to 400 words and you can include pictures and drawings but no photos, please.
- There is a section called Letters to the Editor(s). Use it!
- I know people have something to say. I listen to the alpaca-llama chat group on the Internet, if this group is any indication, I know everybody has a story to tell about our speechless friends. Put it down on paper and send it in. I'm sure the other members of this great organization would like to read about it. Send pictures, lots of pictures.
- The staff is still planning to increase the issues per year. More on this later.....
- **And finally.....** Calling this publication a newsletter is like referring to the National Geographic Magazine as a *brochure*.....so.....

Stay well and have a good summer and we'll see you at the Conference this fall.

*Thanks, Ron and Marie Hinds*

# New Members

By Judy Sealy, RMLA Membership

Sally Bacus  
LLAMA LLOVE  
902 Quail Creek Ct.  
Southlake, TX 76092  
(817)488-5078

Chris Bynum  
732 Camino de Lucia  
Corrales, NM 87048  
(505)897-8796

Karin Conrad  
P.O. Box 3120  
Winter Park, CO 80482-3120  
(970)726-4338

Jeanne Guttry  
7334 S. Knolls Way  
Littleton, CO 80122

Barbara Fillmore  
181 50 N. Elbert Rd.  
Elbert, CO 80106  
(303)648-9972  
FAX (303)648-9897

Tom Jones  
P.O. Box 131  
Dillon, CO 80435  
(970)468-5687

Angus & Margaret McColl  
YOCOM-McCOLL TESTING LABS, INC.  
540 W. Elk Place  
Denver, CO 80216-1823  
(303)294-0582

Patty Preheim  
P.O. Box 806  
Capatan, NM 88316-0806

Peter W. Rodgers, D.V.M.  
LONE TREE LLAMAS  
621 Lone Tree Lane  
Lyons, CO 80540  
(303)823-0143

Melinda Scott  
3981 Logsdan Road  
Siletz, OR 97380  
(541)444-7133

Dave Smith  
HC48 Box 1027  
Roberts, MI 59070

Rex Strait  
2030 190th St.  
Inwood, IA 51240  
(712)753-4960

Marty Wilson  
13850 Crosby Circle  
Sedalia, CO 80135  
(303)647-9974

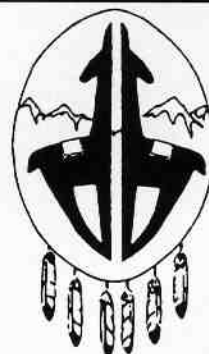
## ADDRESS CHANGES:

David Lee-Johnson  
MAGICAL MENAGERIE  
16020 Robinwood Lane  
Los Gatos, CA 95030

Richard J. & Jeanne Williams  
LOTHLORIEN  
HC13 Box 360  
Fairview, UT 84629-9608  
(801)427-3563



*Welcome to RMLA*



## INDIAN PEAKS LLAMAS

*Since 1980*

*Herd Development  
Marketing Consultation*

*Alaine Byers  
45640 Highway 72 • Ward, CO  
(303) 459-3245*



## List of Advertisers

Blue Line Design .....	7		Log Hill Llamas and Alpacas .....	47
Boulder Ridge Llamas .....	60		Mile High Alpacas .....	25
Burning Mountain Llamas .....	45		Overland Trail Llamas .....	11
Cache La Poudre Minerals .....	22		Pheasant Hill Farm .....	14
Cottonwood Farm Alpacas .....	32		Pikes Peak Woolies .....	34
Cria Creek Ranch .....	13, 29		Rolling Rock Llamas .....	49
Emily Griffith Center .....	22	“	SDF Graphics .....	39
Firecracker - Reno Edition .....	35	”	Serendipity Farm Llamas and Alpacas..	14, 26
Golden Ridge Llamas .....	26	”	Serenity Lane Llamas and Alpacas .....	2, 32
Great Western Roundup .....	19		Stevens Llama Tique and Suri Alpacas.	39
Hance Ranch .....	47		Stewart's Royal Alpacas .....	16
Hickory Hollow Ranch .....	17	“	Stillwater Minerals .....	17
High Hopes Llamas .....	23, 49	”	Trout Creek Llamas .....	59
Hollybrook Farm & Llama Ranch .....	7	”	TTEAM Training; Dale Pettigrew .....	29
Indian Peaks Llamas .....	13, 56		Winding Trails Llamas .....	26
Llamarage .....	26		Yocum-McColl Fiber Testing Lab .....	13

**Tell them you saw their ad in the RMLA newsletter!**



**RMLA** 

**LET'S  
DO IT!**

**MARK YOUR  
CALENDARS!**

**FALL CONFERENCE  
OCTOBER 3, 4 & 5  
LONGMONT, COLORADO**

**SEE THE CENTER LAYOUT IN THIS ISSUE FOR MORE INFORMATION**

# Journal Advertising Prices and Ad Sizes

## Display Ads:

Full Page: 9-1/2" x 7" .....	\$65.00
Full Page Inside Cover .....	\$80.00
Back Cover .....	\$50.00
1/2 Page: 4-3/4" x 7" .....	\$40.00
1/2 Page Back Cover (Two Color) .....	\$115.00
1/4 Page: 4-3/4" x 3-1/2" .....	\$20.00
<b>10% Discount for 3 consecutive issues for above SAME Display Ads</b>	
Business Card: 2" x 3-1/2" .....	\$10.00

**NOTE: ALL DISPLAY ADS MUST BE CAMERA-READY AND THE CORRECT SIZE**

A Journal media kit is being prepared for advertising sizes and current rates. It will be available before the Oct. Conference.

## Classified Ads:

RMLA Member Classified: (50 words) .....	\$5.00
Non-Member Classified (50 words): .....	\$10.00
<i>(For more than 50 words - 15¢ per word)</i>	

**Mail all Camera Ready Ads to:**  
**RMLA Journal**  
**9349 Tammy Lane**  
**Parker, CO 80134-7511**  
 (Faxes are not usable for ads.)

**For all other communications you may use:**

**Fax 303-841-7635**

(Double space and enlarged font sent by fax)

**e-mail**

**RONLAMA@AOL.COM**

**Ron and Marie Hinds, Editors**  
**Phone - 303-841-4889**

- Please make checks payable to RMLA.
- B&W or color photos may be used, color is preferred
- Graphic design and typeset for ads is available.

# Rocky Mountain Llama and Alpaca Association

## Membership form

### Membership Types

Date: \_\_\_\_\_

- Individual adult \$30.00/year (1 vote, Journal, directory entry)
- Farm/Ranch \$50.00/year. (Couple or 2 individuals with 1 business, 2 votes, Journal, directory entry)
- Junior \$10.00/year (18 or under, must have adult member sponsor, Journal subscription and 75% reduced)
- Life Membership - \$500 (conf./show fees as encouragement to participate.)

Name 1 \_\_\_\_\_ Farm/Ranch \_\_\_\_\_ Age (if Junior) \_\_\_\_\_

Name 2 \_\_\_\_\_ Phone \_\_\_\_\_ Fax \_\_\_\_\_

Address \_\_\_\_\_  
Specify Sponsor if Junior membership City \_\_\_\_\_ State \_\_\_\_\_ Zip+4 \_\_\_\_\_

Please include, Zip+4 reduces postage costs

	Females	Intact Males	Geldings
Number of Llamas owned:	_____	_____	_____
Number of Alpacas owned:	_____	_____	_____

Fill out form and mail with your check to:  
 Judy Sealy, RMLA Secretary  
 593 19-3/4 Road  
 Grand Junction CO, 81503

### Expertise /Interest

- |  |  |   |
|--|--|---|
| <input type="checkbox"/> Breeding (BR) | <input type="checkbox"/> Training (TR)       | <input type="checkbox"/> Driving (DR)   |
| <input type="checkbox"/> Sales (SL)    | <input type="checkbox"/> Products (PR)       | <input type="checkbox"/> Boarding (BO)  |
| <input type="checkbox"/> Fiber (WL)    | <input type="checkbox"/> Research (RE)       | <input type="checkbox"/> Judging (JG)   |
| <input type="checkbox"/> Packing (PK)  | <input type="checkbox"/> Leasing (LE)        | <input type="checkbox"/> Brokering (BK) |
| <input type="checkbox"/> Commercial    | <input type="checkbox"/> Other Specify _____ |   |
| Packing (COM'L PK) _____               |  |   |

### Committee Interest

- |  |   |                                      |
|--|---|--------------------------------------|
| <input type="checkbox"/> Finance             | <input type="checkbox"/> Marketing          | <input type="checkbox"/> Fiber       |
| <input type="checkbox"/> Continuing Ed.      | <input type="checkbox"/> Nominations/Elect. | <input type="checkbox"/> Membership  |
| <input type="checkbox"/> Packing             | <input type="checkbox"/> Research           | <input type="checkbox"/> Performance |
| <input type="checkbox"/> 4 - H               | <input type="checkbox"/> By-Laws            | <input type="checkbox"/> Library     |
| <input type="checkbox"/> Other Specify _____ |   |                                      |

Volunteering in RMLA is very rewarding, you meet some great people and you get to do some hummin' along the way.



# RED CHIEF

**BREEDINGS TO PROVEN BLOODLINES**

**LIVE BIRTH GUARANTEE**



**BOARDING MALES & FEMALES  
IN THE ROCKY MOUNTAINS**



**Trout Creek  
Llamas**

**RICK & JAN CUMMER  
P.O. BOX 6848  
WOODLAND PARK, CO 80866  
303-647-2429**

# National Western Stock Show Heavy Wool Female Reserve Grand Champion



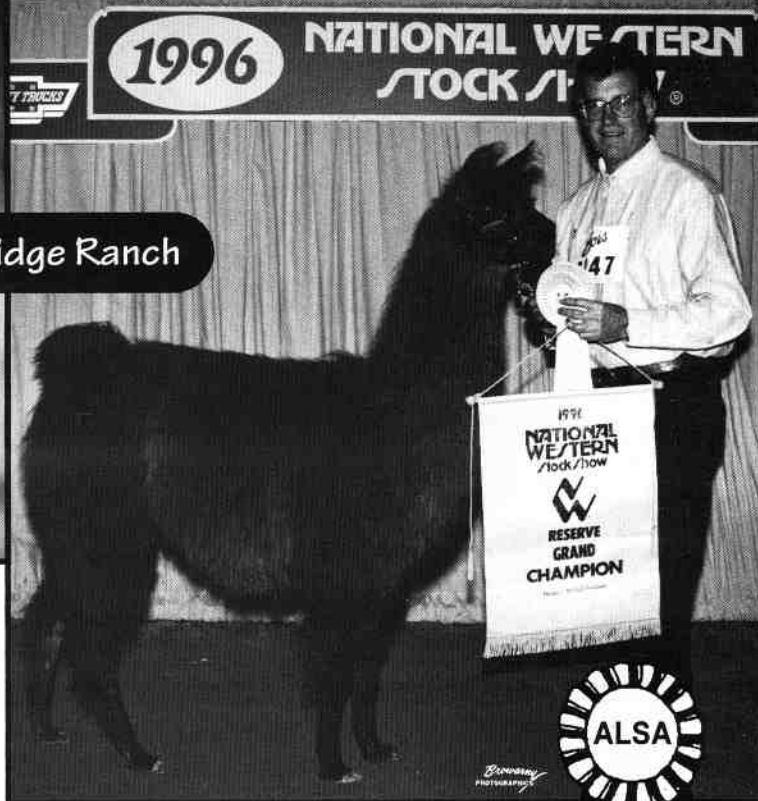
Boulder Ridge Ranch

**PERUVIAN  
PICACHO**

Peruvian Picacho's first offspring is the 1996 National Western Stock Show Heavy Wool Female Reserve Grand Champion. Picacho is a true outcross to the domestic llama. This means that his genes add a vigor and quality to his crias that surpasses either parent. Picacho came in second in the Get of Sire Class behind another Peruvian. The genes make the difference ... isn't it time you put some Peruvian genes to work in your herd?

Picacho will be available this spring for a limited number of outside breedings. We guarantee you'll be satisfied or we will refund your stud fee.

Call for details and reserve your breeding now.



Picacho's Mercedes 11•18•94

We ♥ Llamas

Bob & Jo Riley  
Post Office Box 1189  
Lyons, Colorado 80540  
303•823•5409



RMLA  
593 19-3/4 Road  
Grand Junction, CO 81503

Non Profit  
Organization  
U.S. Postage  
**PAID**  
Kansas City, MO  
Permit No. 6035

Jim Opperman  
12185 West 13th Ave.  
Golden CO 80401-4303

Address Correction Requested

Dated Material  
Do Not Delay in Delivery, Please!