

1994

RMLA



September

Rocky Mountain Llama and Alpaca Association

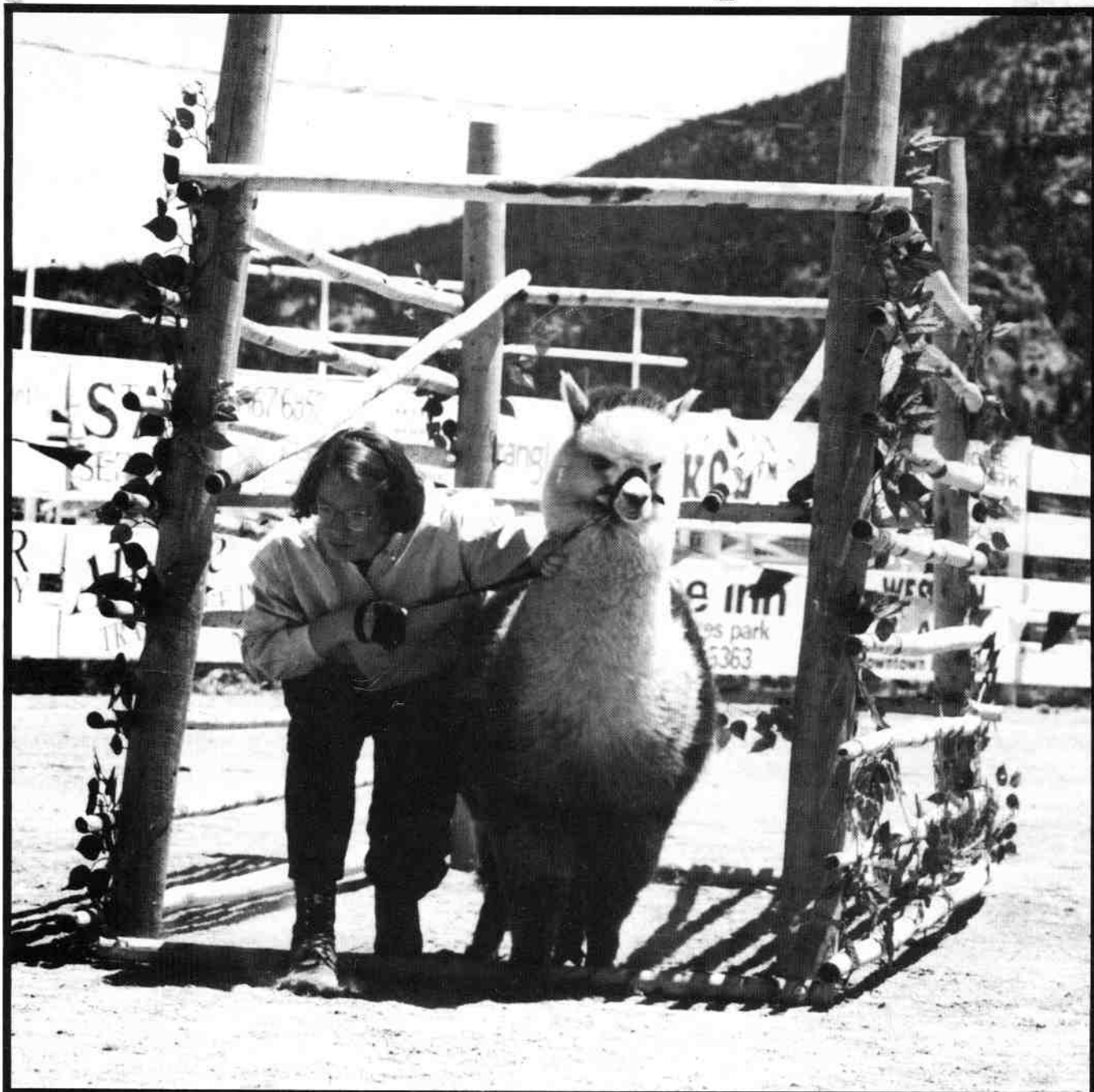
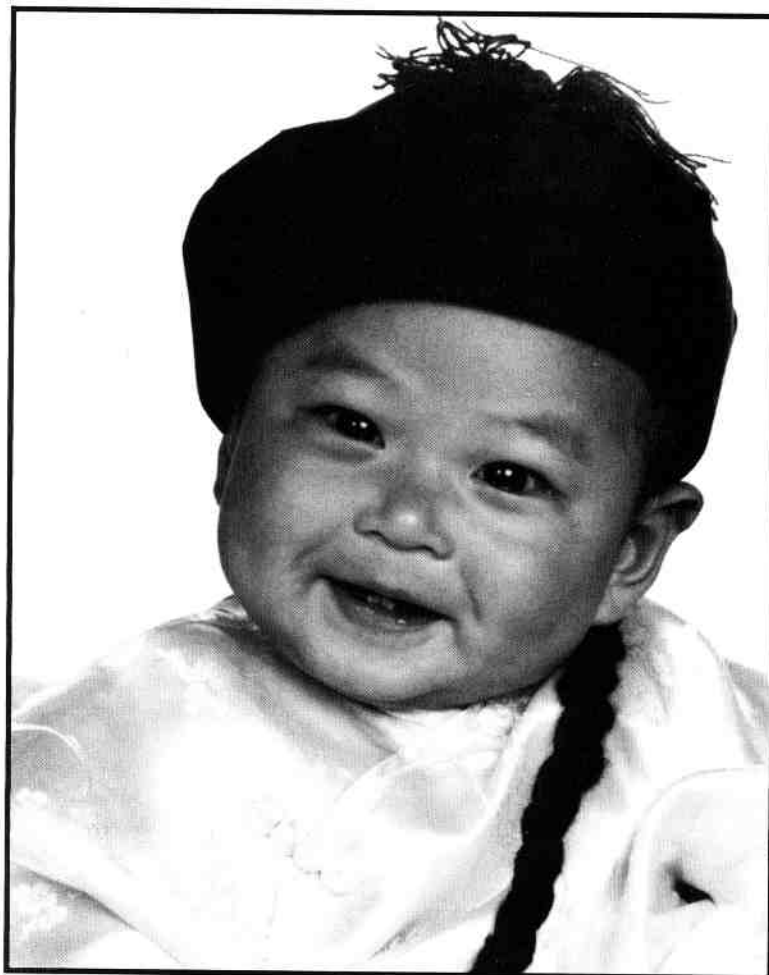


Photo by Susan Ley

**WHO SAYS OBSTACLES ARE  
ONLY FOR LLAMAS!**

Imported from People's Republic of China

*Alia Morgan Lee Brown*



*Sweet  
Disposition*

*Total  
Outcross*

*Almond  
Eyes*

*Well  
Mannered*

Has Dad Eating Out Of Her Hand!

*Come meet Alia and see our four-legged babies, too.*



**Serenity Lane Llamas & Alpacas**

Bill & Donna Brown

15293 West Highway 24 Woodland Park, CO 80863

719-687-1224

*By Appointment Please*

# ROCKY MOUNTAIN LLAMA & ALPACA ASSOCIATION

## BOARD OF DIRECTORS

President	President-Elect	Vice President	Secretary	Treasurer
Stan Lacher Post Office Box 506 Elizabeth, CO 80107 303-646-0989	Reid Langerman Star Route, Box 303 Placitas, NM 87043 505-867-3442	Kirby Pfrangle 527 Sunset Worland, WY 82401 307-347-2533	Judy Sealy 593 19-3/4 Road Grand Junction, CO 81503 303-241-7921	Sharon Beacham 2380 N. 95th Street Boulder, CO 80301 303-666-9437

### Other Wonderful Volunteers You Might Need:

<b>Newsletter Editor</b> Jo Stewart Riley Post Office Box 1189 Lyons, Colorado 80540 303-823-5409	<b>Newsletter Photographer</b> Bob Riley Post Office Box 1189 Lyons, Colorado 80540 303-823-5409	<b>RMLA Library</b> Chris Switzer Box 3800 Estes Park, CO 80517 303-586-4624	<b>Caring for Llamas &amp; 4-H</b> Dee Goodman 41930 CR AA Akron, CO 80720 303-345-2927
---	--	--	---

## DEADLINES FOR THE NEWSLETTER!

January Issue ..... December 1st	July Issue ..... June 1st
March Issue ..... February 1st	September Issue ..... August 1st
May Issue ..... April 1st	November Issue ..... October 1st

## MEMBERSHIP INFORMATION

Membership year runs from January 1 through December 31

**Adult Individual Membership:** \$30.00 (One vote, newsletter, directory entry)

**Farm or Ranch Membership:** \$50.00 (Couple or two individuals associated with one business; two votes, newsletter, directory entry)

**Junior Membership:** \$10.00 (18 or under; no vote, receives newsletter and 75% reduction in conference/show fees; must have adult member sponsor.)

**RMLA also provides an extensive lending library of books and videos to members.**

For further information please contact Judy Sealy

### INSIDE THIS ISSUE:

SHEARING ALPACAS ..... 5	VISIT TO PERU ..... 12	FOUR CORNERS ..... 30
SILENT AUCTION ..... 6	ESTES PARK RESULTS .... 18	BYLAW CHANGE ..... 33
500TH MEMBER ..... 9	RMLA HISTORY ..... 27	FAIRPLAY RESULTS ..... 34
FIBER...NOW WHAT .... 10	LIBRARY NOTES ..... 27	NEW MEMBERS ..... 36

*The information contained in this Newsletter is not intended to be a substitute for qualified professional advice. Our readers are encouraged to consult with their own veterinarian, accountant, or attorney with any questions concerning their animals or business operations. RMLA is not responsible for any losses resulting from a reader's failure to heed this caution.*

# CALENDAR OF EVENTS

## September 23-25: Heartland Alpaca Festival; Iowa City, Iowa

Free seminars on management, health, fiber, and investment potential. Large selection of alpacas for sale. Contact: Irene Wherritt, 319-683-2722.

## September 29-October 2: RMLA Conference; Longmont, CO

Our wonderful Biennial Conference is planned to be the best! For information, call Dee Goodman, 303-345-6632. It is not too late to register. If you need another registration form, call Dee. As of the printing of this Newsletter the Pre-Conference Clinics are not full. Don't miss this opportunity to gain all the knowledge that is being presented.

## October 8: Llamathon; west of Fort Collins, Colorado

Join us for a challenging 16 mile run through the Roosevelt National Forest or you can choose an 8 or 4 mile jaunt. For more information, call Dr. LaRue Johnson, 303-484-8550.

## October 14-15: Central States Conference; Iowa City, Iowa

The Iowa Llama Assoc. is the sponsor. Seminars, animal displays and sale, fiber demos, commercial booths. For information, contact Steve and Kathy Bright, 319-351-4429.

## October 28-30: Firecracker Fall Edition; Reno, Nevada

Reno Livestock Events Center. Featuring the Harvest Classic Production Sale and the Fall Open Sale. For information, call Dick or Pat Wickum, 800-876-8816. See ad on page 11.

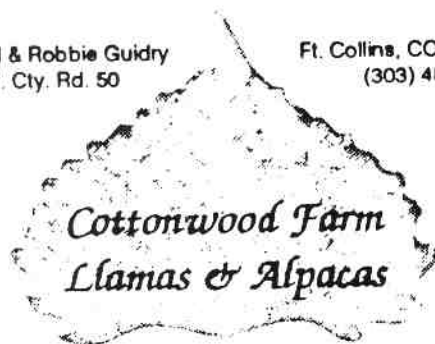
## January 21-22: 10th Annual National Western Stock Show; Denver, CO

The 1995 Stock Show is changing the dates of the Llama events to the last weekend of the Show. The Performance Classes, including Open Obstacle, Open Pack, Open PR, Performance Champion, Pack String and Youth Obstacle, will start at 6:00 p.m. on Saturday night. Halter Classes, including Altered Llama and Youth Costume, will start at 9:00 a.m. on Sunday morning. To receive the Premium List (list of classes) and Entry Form, just contact NWSS at 4655 Humboldt St, Denver, CO 80216 or call 800-336-NWSS (9677). The deadline for entries is December 1st. Don't delay. The Stock Show is restricting exhibitors to 3 animals because of space limitations . . . so start picking your favorite ones today.

**FIBRE CLASS:** Send 1 oz. fibre entries to Judy Brock, 10028 South Turkey Creek, Morrison, CO 80465; llamas need not be present for Fibre class. Contact Steve Gaunt for information for the NWSS Llama Show program (\$20.00 business card size) at 8089 Highway 93, Golden, CO 80403, 303-279-4896. If you have any Show questions, just call Grace Shaddeau, 303-279-4896.

Michael & Robbie Guidry  
3709 W. Cty. Rd. 50

Ft. Collins, CO 80521  
(303) 482-0350



**ALPACAS**  
and  
**LLAMAS**

Phil & Chris Switzer  
(303) 586-4624

P.O. Box 3800  
Estes Park, CO 80517

# SHEARING ALPACAS: SOME HELPFUL HINTS

by Phil & Chris Switzer

With alpacas we do NOT brush or groom until just before shearing, unless we are taking them to an event. Alpacas cannot be brushed to gather their wool - it is very thick and dense and must be clipped or shorn. For the most part, the density of alpaca wool keeps the debris on or near the surface. Avoid brushing often, since the fibers will open up and more vegetable matter and dust will go down into the fleece.

Brush and remove all the debris from the alpaca prior to shearing. Using a low powered blower may get the dust out without tangling the ends. (Don't stand too close.) ***A clean fleece is worth a lot more than a dirty one.***

**The right equipment** - For just a few alpacas, use hand shears - 5 or 6-inch "rigged" blocking shears are quieter, easier to sharpen, and will be kinder to your hands. To sharpen, use a fine oil stone. For a large herd, electric shears may be cost effective. If you decide to buy them, we recommend an Oster 72157 motor with a Oster EW310C (3-inch head for 4-point cutters), Oster P2311 wide diamond cutter (buy at least 2 or more), and Oster 2OTBC 3-inch 20 tooth blocking comb (buy at least 2 or more). To sharpen, you need to hollow grind the comb and cutter. For a smaller herd, buy several sets of combs and cutters and send them to your equipment supplier - for a fee they will sharpen them. With a large herd, buy the necessary grinding equipment.

**Safety** for you and your animal is the prime concern. Don't use standard electric sheep shears. With the comb openings on a standard 10 tooth comb being about 1/4 inch, you can lose your little finger, a tail, or cut a tendon. The anatomy of a camelid is much different than a sheep. The 20 tooth comb mentioned above has an opening of 1/8 inch which is much safer. If you use hand shears or blunt end scissors, try to keep the blades parallel to the part of the body you are working on - this will prevent you from stabbing the animal if they jerk.

The **helper** you choose is very important. You want someone who is relaxed with animals and is easy going. They must be somewhat

strong and be willing to talk to the alpaca and convey calmness.

**Leave 1 to 1-1/2 inches** of wool on the alpaca. A conduit strap can be put on the head of the electric shears as a gauge. Keep the shears cool by dipping them in a can of automatic transmission oil and wipe them off so the oil doesn't get into the fleece.

Locate a **shearing area** in a dry, flat place next to a sturdy fence or wall that you can tie the lead rope to. Using the back side of a big piece of carpet on the ground may help. A garage floor also works well. Tie the lead rope about 2 feet off the ground with 1 foot of slack to the fence - so the alpaca can stand, kush or be rolled on a side. A chute with sides that open also works well.

**Skirting** is simply removing the worst fiber that is weathered, dirty, and/or coarse. Remove lower leg wool, belly area, around the tail, and at the base of the neck where hay can collect. **Throw away all excessively dirty wool and skirted areas.** Trim the tail with a blunt end scissors, leaving about 3 inches on it.

**Neck wool** will be shorter, so put it in a brown paper grocery bag. It can be blended with other fibers. Trim topknot and upper neck with a blunt end scissors - discard this since it is too short to spin. A pair of pillow cases works well for the blanket area - one for each side. This is the "prime wool" from the alpaca.

Most of the time it is easier to lean over the animal while working on the opposite side from where you are standing or kneeling. When using electric shears with the conduit gauge, use your left hand continually to pick up the fiber you are about to cut. This will help keep the fibers at an even length from the body when they are cut and give you an even result.

The fiber that you get when you re-cut the wool to trim and smooth is called "**second cuts**" and must be thrown away as it can't be spun. (It's too short.) Trim any stragglers with a blunt end scissors.

Continued on page 6

## SHEARING ALPACAS: SOME HELPFUL HINTS (CON'T)

The **amount of wool** collected depends on the size of the alpaca plus the density of the wool. Also, how often shearing is done annually, every 2 years, etc. We average 4-6 pounds with shearing every 2 years - the prime wool from the blanket area.

Average **time** for shearing is 1 hour but this does not include cleaning and brushing time beforehand. If the alpaca will stand calmly during the entire shearing, the process may only take 30 minutes.

The "shorn look" grows on you and you are able to evaluate the conformation of your animals. It's also easier to tell when they are about to have a cria (baby) and easier to see the cria nurse.

When you let your newly shorn alpaca back in with the herd, there will be a lot of snorting, sniffing, and humming while the herd checks out this "new" camelid. They may pretend they don't know him - which is a game camelids sometimes play. When you see your normally lethargic alpaca playing with the babies because he's so cool - you will know it was worth it.

©1994 All rights reserved. No part may be reproduced without permissions of the authors.

The complete shearing article is included in the new book, *SPINNING LLAMA & ALPACA* by Chris Switzer, 44 pages with 12 sections, available by mail order, \$10.00 plus \$1.60 postage. Mail to Box 3800, Estes Park, CO 80517.



## A SILENT AUCTION FOR THE CONFERENCE

Dan and Ellen Schreiner have donated a great male yearling to the Conference to be sold in an auction to raise money for research at CSU. The young male is a Catman son who's mother carries Redwood's Clancy's bloodline. This is an alert young yearling llama with good conformation and personality.

Polecat II is brown-grey in color with a nice head, straight legs and a moderate wool coat. His temperament is fine and the Schreiners have exposed him to library and school groups. He will make someone a nice young stud and carries hard to get bloodlines.

The dam is the female that Sally and Paul Taylor donated to the Schreiners after their fire.

This is a great chance to help CSU continue research and improve the quality of your herd with a new sire.

The silent auction will be held during the conference. All bids will be sealed and deposited in a Bid Box. During the

Saturday night dinner, the Bid Box will be opened and the highest bid will be awarded Polecat II.

We just wanted you to be prepared to acquire a new stud . . . Don't forget your checkbook!

**Additional contributions to the Silent Auction are welcome. Please contact:**

**Mary Beth Hartsough, 303-785-2463.**



Polecat II

# Stillwater Minerals

Since 1989

## **Most Accepted Supplement**

Stillwater Minerals is the first widely accepted quality vitamin and mineral supplement based on llama nutritional studies by Dr. LaRue Johnson at Colorado State University.

## **Many Improvements**

We continue to consult with Dr. Johnson on formula adjustments. In the past 5 years we have added special ingredients to help preserve freshness . . . resist clumping . . . plus we added more vitamins and minerals to combat stress, aid digestion and encourage wool growth.

## **It Tastes Good Too!**

Most important, we even made it taste better. As Dr. Johnson said, "The best endorsement I can give is that my llamas sure eat more Stillwater Minerals Supplement than they ate of my stuff."

## **Stillwater Minerals Contain**

The ingredients still include steamed bone meal, dried molasses, Zinpro 100<sup>®</sup> and Vitamin E, just like the original formula, plus 15 other custom ingredients. These additional ingredients add minerals and vitamins that are not found in any other Llama or Alpaca supplement.



## **Four Custom Formulas**

### **Llama-Min 101**

Balanced Vitamins A, D<sup>3</sup>, & E plus Calcium and Phosphorus.

### **Llama-Min 102**

For stress: has higher levels of Selenium and vitamins plus Electrolytes. Great for summer use.

### **Llama-Min 103**

For wool growth has DL-Methionine, Copper, B<sup>12</sup>, and Electrolytes. Designed for fiber quality.

### **Llama-Min 104**

**New**

Calcium and Phosphorus balanced for alfalfa, plus the highest levels of Vitamin D<sup>3</sup>, E, B<sup>1</sup> and B<sup>12</sup>. Ideal for winter feeding program.

## **Those in the Know!**

You will find Stillwater Minerals being used at CSU Veterinary Teaching Hospital . . . Dr. David Pugh's Llama research program at Auburn University . . . Dr. Jim Vicker's Select Peruvian herd . . . and, of course, Dr. Johnson's own llamas.

### **To Place your Order:**

- You can send us a check after your Stillwater Minerals arrive.
- We pay all shipping and handling.

Call Bob or Jo Riley for a brochure or to order.

**800.255.0357**

Post Office Box 1189 • Lyons, CO 80540  
FAX: 800.648.2383

**JUST ENOUGH RANCH  
HELOTES, TEXAS**

**Our Sincere Thanks to  
Indian Peaks Ranch &  
CAMACHO CHIEF for the  
best crias produced on our  
ranch:**

**JUST ENOUGH CAMACHO SUN/12-10-93/Male/Ft.Worth  
Sale 95'**

**JUST ENOUGH SUNBURST/12-18-93/Male/Ft.Worth Sale  
95'**

**SWEET SUCCESS/1-6-94/Female**

**POPULAR DEMAND/3-5-94/Female/Ft. Worth Sale 95'**

**We are proud to show off our  
breeding program with these  
consignments. I urge you to seek  
CAMACHO CHIEF to add a star to  
your herd.**

**JOHN & EMILY KLAUSS  
210/510-4443**



# THE 500TH RMLA MEMBER

by Julie Boomer

Thank you for the honor of being Number 500! This is our first adventure into the world of large animals, and it is a welcome feeling to be included in the RMLA Newsletter.

My husband, Steve, and I are avid animal lovers, and since we've married have become avid animal collectors and advocates for animal rights. Our goal, when we bought our 35 acres in Divide, Colorado, was to have a safe haven for the wildlife, and freedom for ourselves from the draining suburbia of Chicagoland, Illinois. Steve is a struggling writer, warehouse person by trade and at present all-around-barn-builder, painter, framer, fencer and whatever else the land requires. I am a Customer Service rep by choice, and hope to return to it as we find the happy medium between career and country-living.

We wanted to get involved in the raising of animals for income that was cruelty-free. We have 6 dogs, 2 cats and presently a visiting 7th guest-dog. Of the 6 dogs, four are purebreds we bought out of love and with the intention of breeding. After learning TOO much about the cruelties associated with labs, and overpopulating, and puppy-mills, we are not breeding any of our purebreds. All have been altered with the exception of the most fragile who remain safely protected from breeding.

Our interest in llamas began when we first returned to Colorado. We visited several llama ranches and became associated with Donna and Bill Brown of Serenity Lane Llamas. They were in need of a ranch foreman (fore-person?), and I was in need of a job. I worked for Serenity Lane for a couple of months and truly enjoyed the peaceful labor of caring for these sweet animals. My husband had no interest in a llama until he came to help me with my work, and was taken by the gentle temperament of these large critters.

We had wanted to start a ranch and hopefully be able to allow the land to work for us, in time. I love horses and still intend to get some pleasure and work horses to help us pull the firewood we have abundance of. But for income that does not require damaging the land or hurting any living creatures, we chose the llama. The decision came when my time had ended at Serenity Lane, and we had chosen a young stud and a favorite female. Unfortunately, they could not be used as a pair, as they had related ancestry and we would need to choose another llama for half of our pair. We knew we wanted to get a

breeding pair, and would have to search further to find another favorite male or female. We decided to take a ride to Morris's Llamas and found a girl that just struck us. We had been so impressed by Neebish of Serenity Lane, and Morris's Calico had the same striking eyebrows and beautiful stature we had been looking for. To begin our herd, it would likely have been wiser to have bought a bred female, but Calico was the ONE, and there was no going back. We signed the contract that day.

Calico will be reedy to be returned to Morris's for her breeding to Peruvian Hombre this September. When she returns to us, she will return with Ian, who is yet too young to stud, but is a beautiful half-Bolivian who will be her future mate.

We hope to slowly build a herd and continue the tradition of breeding quality llamas as we have witnessed in our association with our fellow llama ranchers. We are only just beginning and have a great deal to learn, but thanks to the Browns and the Morris's, we have a fine beginning. Without the love and support given by our family and friends, our entire country adventure may not have unfolded, so to them too we have to give a giant thanks! Our land and house have now become our ranch and home, and there is no better place to be.



Boomer's Calico Mist

# FIBER . . . NOW WHAT?

By Sharon Beacham

Here are some ideas to help you get started processing the fiber that you sheared off your llamas this summer. Begin by spreading the fiber out on a piece of hardware cloth. Loose debris will fall through the openings as you sort and remove sections. An old sheet can also be used.

1. Pull away any matted parts or those too dirty to be practical to clean. Use this fiber for mulch in the garden. Cut large chunks into smaller pieces so water can get between them. The birds will help themselves to it next spring. Remove any large or rough pieces of debris and this fiber can also be used to insulate coats for crias or elderly llamas.
2. To remove the guard hairs, hold a handful of fiber firmly by the cut end. Pull out the longer, coarser fibers until only the shorter undercoat is left. Save the guard hairs in a separate pile. Wipe your hands on a sheet of clothes dryer fabric softener if static is a problem.
3. Gather up all the second cuts and other pieces less than three inches long. If you don't know how to make them into felt, watch for a Christmas project in the November newsletter.
4. The undercoat fibers are now ready to pick clean, card or comb and spin into yarn for knitting and weaving.

## What can you do with guard hair?

Because it's medulated (hollow), guard hair is perfect for tying fishing flies. Package small amounts in zip lock bags to sell to fishing supply shops. Small tufts of undercoat fiber are also useful and could be included in the bags.

Check out the book *Andean Sling Braiding* from the RMLA Library. It gives directions for braiding coarse fiber yarn into rope.

Guard hair makes great doll hair. Craft persons and doll hospitals are potential customers if you have more than you can use. The hair can be styled with a curling iron.

Make a wig to go with a Halloween costume, or for Santa Claus. The following directions can also be adapted to make a beard. This is just for

fun; it can't be combed or washed like a real wig. If you already have a stack of guard hair it can be made in about two hours.

## Supplies needed to make a wig:

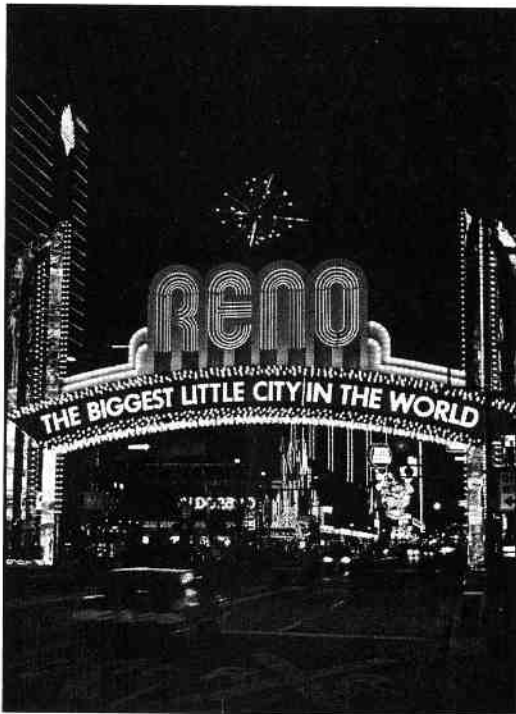
- \* 2-3 oz. of guard hair about 8 inches long
  - \* Hand carders, optional but recommended
  - \* Six sheets of tissue paper, 12" x 30"
  - \* 90 inches (7 1/2 feet) of 1/4 inch wide elastic. Narrow bias or twill tape can be used, but the elastic texture seems to hold the fibers better.
  - \* Sewing pins and masking tape
  - \* Sobo® or other glue suitable for use on fabric
  - \* A baseball cap made of nylon mesh. OK if the front part is solid fabric. Cut off the bill as close as possible. Any color cap will do.
  - \* A 30" x 12" piece of corrugated cardboard or foam board on an 8 foot long work surface.
  - \* Sewing machine with zig zag stitch.
1. Card the fibers to make them parallel and open up the tips. This is optional if you're making a Halloween wig.
  2. Put a piece of tissue paper on top of the cardboard, matching the edges. Pin one end of the elastic to the center of a 12" edge of the paper and cardboard. Use more pins to hold the elastic down the center, parallel to the long side. Don't stretch the elastic.
  3. Squeeze a narrow line of glue down the center of the elastic, enough to help hold the fiber but not get on the paper.
  4. Compress the *width* of a carded section of fiber down to about 5 inches. Place it on the elastic with 2 inches of fiber *length* on one side and the remainder on the other. It works best to use the wispy ends, that you pulled to remove the fiber from the carder, for the long side. If you are using uncarded fiber, the cut ends go on the short side. Press lightly into the glue. Only the bottom layer of fiber will stick; this is ok. Apply more fiber until the elastic is covered to within an inch of the end of the paper. Remove pins.
  5. Slide the paper off the cardboard. Tape a

Continued on page 30



**FIRECRACKER**  
**LLAMA SALES**

**RENO LIVESTOCK EVENTS CENTER ★ OCTOBER 28-30, 1994**



***Inaugural Fall Firecracker Sale in Reno, Nevada  
Make plans now to join the fun!***

*Call for more  
information*



*Presented by  
FIRECRACKER, INC.*

**Dick & Pat Wickum ■ 21325 Finn Road ■ Sheridan, OR 97378 ■ (503) 843-2765 ■ Fax (503) 843-3030  
Firecracker Office ■ 800-876-8816**

**HOLIDAY INN 1-800-648-4877 ■ ELDORADO HOTEL 1-800-648-5966 ■ DAYS INN 1-800-448-4555**  
Identify yourself with the Firecracker Sale when making reservations.

# A SERENDIPITOUS VISIT TO PERU: PART IV

---

by *Bobra Goldsmith*

Wednesday morning, December 1st. Having finally met and started initial work with the two llamas who were to be trained for cart pulling, I was really eager to continue and see what kind of progress they would make. Tony Anderberg and I had agreed to meet for breakfast at 7:30. It was another sunny-misty morning with the two giant volcanos, Misti and Chicaneay, just barely visible in the brilliant morning sun. Outside on the terrace little Angelica llama was fulfilling her morning routine, frolicking after the gardener as he tended to his watering, browsing here and there, and generally ignoring the three dogs who were the only other resident animals. The peasant woman with her band of sheep descended to the riverbed, crossed and slowly made their way to a distant terraced pasture. Through the garden gate I saw a man ride by on a mule with either water or milk cans hung on the saddle and a woman on a donkey carrying a small load of fresh cut alfalfa.

At 8:40 Mauricio picked me up in his car and drove me to his house. Just before we arrived there, he stopped and pointed out a narrow dirt lane lined with tall eucalyptus trees, which led off the main road to the right. He said that might be a place to do some of the training. Then, about half a block (so to speak) before we arrived at his door, he turned left onto a broad dirt road which made a slight ascent before leveling off. It led around behind the houses on his street, giving a view of the back gardens, and other small terraced fields. Then with a somewhat steep descent the dirt road circled back down to the main road where we soon came to Mauricio's house. This dirt road, I thought, would be just right for our training sessions.

Once at Mauricio's house, he explained that he had to return to the Expo right away, as still more llamas were arriving to be checked in, and still more pens had to be built. He said that following the training session, Patricia, his wife would drive me back to the hotel. But I insisted that I could easily walk, as it was only a short distance away. Felipe was here to learn and help me. I enquired about Roger, who initially was to

learn about cart pulling also. He had arrived late to our training session the previous day and did not see some of the harness fitting and lead training. Mauricio replied that unfortunately he needed Roger to work with him at the Expo. In the afternoon Marco was to bring me to the Expo and then we would go to a bike manufacturer to see what could be done about a cart.

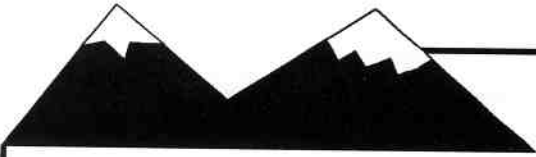
With that Mauricio left and I went to the back lawn and deposited my rucksack on a chair under the patio umbrella. I saw the two llamas grazing on the back part of the lawn but no Felipe. A servant girl came out of the kitchen area, heading towards the opposite side of the garden where the bedrooms and bath were. "Por favor," I ventured, "Donde Felipe?" The girl responded with something I didn't understand but altered her course abruptly, going to the far back garden gate. I was acutely aware that I was on my own with my lame Spanish, no translator, and a young Quechua Indian who knew no English at all. I did, of course, have my dictionary with me in case I really got stuck.

Felipe appeared promptly, smiling shyly, and led me into a garden storage room where all the llama equipment was covered neatly by an old canvas tarp. He carried out the two harness bags, and I brought the halters, lead ropes and brushes. The llamas easily went into their shed area, where I noticed with satisfaction that they had a whole manger full of hay. They would not be hungry, although the grass on the lawn was very short. I caught each llama, again demonstrating the slow-motion haltering technique. Both llamas accepted their halters very calmly but with some surprise, perhaps because they were not eared in the process.

The llamas had their second leading lesson as we moved them from the back lawn to the lower one where our equipment was. I took the Appaloosa, and Felipe watched as I got the male to move several steps and then praised and stroked him. He began to move more consistently responding to the gentle pull followed by instant release when he moved forward. This llama was

---

*Continued on page 14*



# Alpaca Breeders of Colorado

1. **Chester and Beverly Anderson**  
LAPLATA ALPACAS  
2886 County Road 308  
Durango, CO 81301  
(303) 247-1720

2. **Ron and Linda Batt**  
BELFRY ALPACAS  
P.O. Box 9  
Coaldale, CO 81222  
(719) 942-4697

3. **Bill and Donna Brown**  
SERENITY LANE LLAMAS & ALPACAS  
15293 W. Highway 24  
Woodland Park, CO 80863  
(719) 687-1224

4. **Doug and Judy Brown**  
MARQUITA RANCH ALPACAS  
5028 East County Road 40  
Fort Collins, CO 80525  
(303) 221-5421

5. **Neil and Anita Eckstrom**  
THREE HAWK RANCH ALPACAS  
2720 Stove Prairie Road  
Bellvue, CO 80512  
(303) 498-0729  
(800) 221-9798

6. **Michael and Robbie Guidry**  
COTTONWOOD FARM  
LLAMAS & ALPACAS  
3709 West County Road 50  
Fort Collins, CO 80521  
(303) 482-0350

7. **Bob and Barbara Hance**  
HANCE RANCH  
11818 W. 52nd Avenue  
Wheat Ridge, CO 80033-2032  
(303) 422-4681

8. **Walter and Helga Hantscho**  
Contact: Bobra Goldsmith  
ROCKY MOUNTAIN LLAMAS  
7202 N. 45th Street  
Longmont, CO 80503  
(303) 530-5575

9. **Tom and Anne Harper**  
LOG HILL LLAMAS & ALPACAS  
3868 Ouray County Road 22-A  
Montrose, CO 81401  
(303) 249-2516

10. **Ronald and Marie Hinds**  
SERENDIPITY FARM  
LLAMAS & ALPACAS  
9349 N. Tammy Lane  
Parker, CO 80134-7511  
(303) 841-4889

11. **Gary and Maggie Johnson**  
SHEAR DELIGHT FIBER  
1500 Washington  
Rocky Ford, CO 81067  
(719) 254-4358

\* **At the Lazy-O Ranch:**  
1907 Snowmass Creek Road  
Snowmass, CO 81654  
(303) 927-3818

\*12. **Mary Goodman**  
MOUNTAIN SITE ALPACAS  
(303) 927-2484  
(305) 576-4709

\*13. **Julie Otis**  
SNOWMASS ALPACAS  
(303) 927-3199

\*14. **Mike and Don Skinner**  
NORTH AMERICAN ALPACAS  
(303) 927-2591

15. **Robert and Susan Leonard**  
LIONHEART ALPACAS  
P.O. Box 600  
Kiowa, CO 80117  
(303) 648-3630

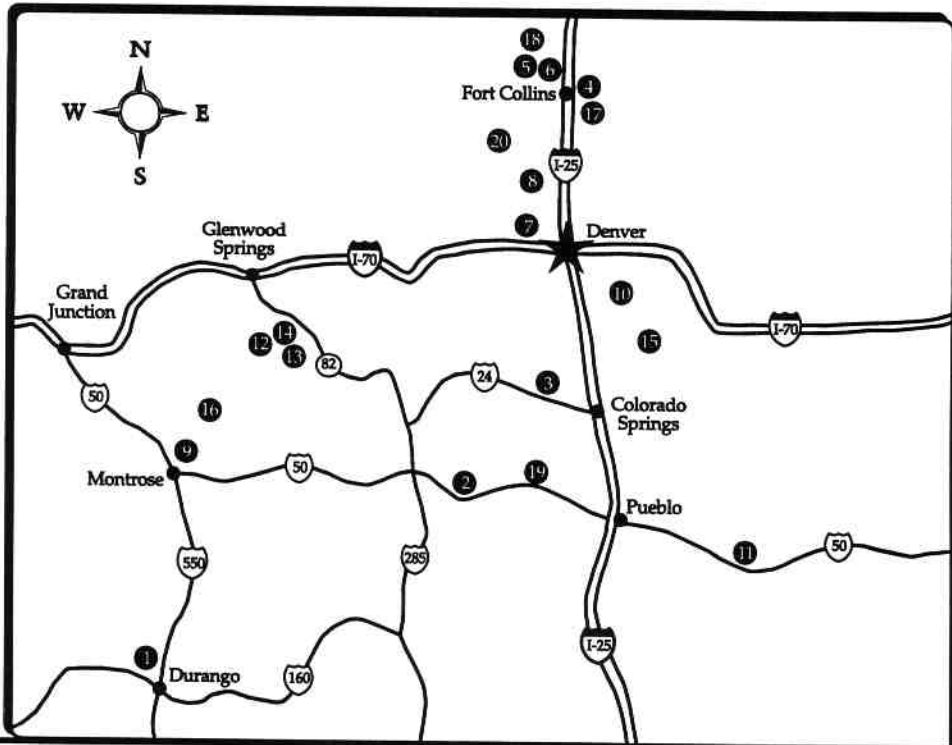
16. **Linda Lindsey and Steve Wolcott**  
INCA TREASURE ALPACAS, LTD.  
P.O. Box 6  
Paonia, CO 81428  
(303) 527-4586

17. **Teri Phipps & David Schieferstein**  
FIREWEED RANCH  
35005 Weld County Road 41  
Eaton, CO 80615  
(303) 454-3142

18. **Scott S. and Susan L. Scott**  
ALPACAS OF COLORADO  
6011 Alpaca Trail  
Bellvue, CO 80512  
(303) 493-5732

19. **Charles and Helen Stewart**  
STEWART ROYAL ALPACAS  
190 Steinmeier  
Canon City, CO 81212  
(719) 275-2701

20. **Phil and Chris Switzer**  
SWITZER-LAND ALPACAS  
P.O. Box 3800  
Estes Park, CO 80517  
(303) 586-4624



## A SERENDIPETOUS VISIT TO PERU: (CON'T)

learning fast. Felipe repeated the procedure with the white gelding.

Once in the lower garden I tied the appy to a tree and Felipe tied the white one to the wrought iron fence that divided the two parts of the back yard. I observed with pleasure that Felipe automatically tied the llama properly with a quick release knot. I took up a brush and began to groom the appy, while Felipe did likewise with the white. Again I was impressed by how matter-of-factly these two llamas accepted the grooming.

Next I indicated to Felipe that he should put on the appy's harness, which was already adjusted to him. It was evident that Felipe had taken in fully everything I had demonstrated and explained yesterday. He did it all correctly and in the right order--the placement of the girth, setting the crupper, putting the neck strap carefully over the llama's head, attaching it to the hook, and crossing the traces over the back. He did it naturally and easily. I was impressed, "My!" I thought, "This guy learns as fast as llamas." He was obviously at home with the llamas. The appy stood for this wonderfully quietly. Next we put the second harness on the white llama, and Felipe did an excellent job of making the necessary adjustments for a proper fit. During this process I began to realize that very little speaking was necessary between Felipe and me at this point, although I injected a word or two when I could, "Muy bueno."

However, I felt that these llamas had to have names, in order for me to work with them and talk to them as I normally do. I had asked Mauricio yesterday if they had names and was not surprised that they did not. I remembered well the public lecture given at the University of Colorado by the visiting Peruvian anthropologist, Jorge Flores, on the herding societies of Peru. He had told us that the Indians have a word for every color of llama as well as for all the different color patterns. Thus a herder can specify to his neighbors that a llama of X color in Y pattern is missing. "Como se dice este color?" I asked Felipe, indicating the Appaloosa llama, who was actually a kind of greyish-red reverse appy. "Tigre," answered

Felipe after a moment's thought. 'Tiger,' a bit strange I thought, since he certainly doesn't have stripes, but it would certainly do for a name. "Alors, llamaremos esta llama 'Tigre,'" I said, "et l'otro 'Blanco.'" The white one was easy at least. Felipe seemed to understand me, in spite of the intrusion of a couple of French words.

After the break for brushing and harnessing, we continued the leading lesson. They both responded so well, it seemed like a new day. It was time to take them out of the yard. We coaxed them through the dark garage area and out through the front door into the street. We had a short distance to go to the turn-off onto the dirt road Mauricio had shown me, but the llamas did not react at all to any of the light traffic. Like any llamas, they were just interested to see some new sights.

On the other side of the street a woman passed by, herding a large cow, two goats and a donkey. All of them plodded along seemingly oblivious to the cars and trucks. This was becoming a familiar sight, people driving their animals from their home corrals to the fields where the animals would be staked out for the day and then be driven home again at the end of the day. Most of the cows had horns and carried their stake-out chains wrapped around the horns. Calves who had no horns were tied out by a leg.

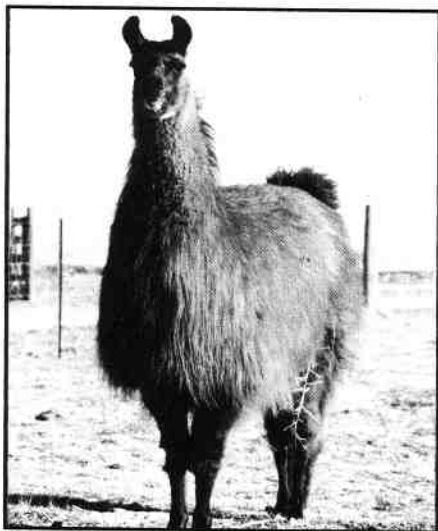
Once we were on the dirt road, I began to encourage Tigre to walk faster and to learn and obey the word commands for "walk" and "stop." This was a totally new notion for Felipe, too, as he naturally wanted to encourage Tigre from behind with a light hissing sound. Praising and stroking the llama on the neck when we stopped and talking to him was also new to Felipe, but he began to see the effect my doing so was having on Tigre and tentatively started doing the same to Blanco.

The last part of our circle loop back to the main road was quite steep and passed between a few houses where people were coming and going. We were definitely a curious sight, leading llamas with that odd equipment on them. Apparently horses being driven to a cart is not some-

*Continued on page 15*

# Llamarage

Breeders of Champion Show Llamas



GLL Java

'94 Champion Med. Wool Male  
Estes Park Wool Market

Breeding for quality makes sense! The quality of our breeding program has been proven in the showing. Let us help in creating your next champion.

50% discount for  
champion females.



Gandy Dancer

'93 Res. Champion Heavy Wool Male  
Estes Park Wool Market

*Joe and Mary Beth Hartsough Post Office Box 574 Platteville, CO 80651 303-785-2463*

## A SERENDIPETOUS VISIT TO PERU: (CON'T)

thing one sees in Peru. Early on in discussions with Jose about possible sources for carts, I had asked if one didn't drive horses and ponies down there. He had replied no, they didn't.

Once back at Mauricio's front door, we had to open the large doors, rather than just the inset, "people" door, because it was dark inside and the llamas were reluctant to go from the brilliant sunny street into what must have looked like a dark cavern to them. When they were brought here from Mauricio's farm they were probably driven in and unloaded inside. But once they were inside and moved on toward the back lawn they felt right at home.

Since we would have to have a cart made, I thought I had better go prepared with some proper measurements. I did have a small measuring tape with me, but it only read in inches, and I knew metric dimensions would be more useful. Somehow, I conveyed to Felipe what we needed

to do. In the storage room we found a wooden pole. That would do to hold alongside Tigre to get a length for the shafts. Our shafts at home are 60 inches, but both Tigre and Blanco were smaller than most of the llamas we drive. I asked Felipe if he could find a metric measuring tape or stick. He disappeared into various parts of the house, but all he could find was a broken piece of a metric "yard" stick. Never mind, that would do.

Felipe held the wooden pole along Tigre's side while I measured the distance from the front end, by the point of his shoulder, to an appropriate distance behind him. I marked the pole and we carefully measured the length in centimeters with the short piece of metric stick. Then I stretched my measuring tape to a suitable width between the shafts. We converted that also by using the little metric stick. Not being any kind of a mathematician, and especially with no cal-

*Continued on page 16*

## A SERENDIPETOUS VISIT TO PERU: (CON'T)

culator at hand, I was not about to trust myself to convert inches to centimeters mathematically. Lastly with the tugs on Tigre's harness set at the highest position I measured from the ground to that point.

That done, we took off the llamas' harnesses, brushed them lightly and turned them loose. The lesson had gone well. Patricia appeared with a Coke for refreshment and offered to drive me back to the hotel. But I assured her I could easily walk. And now I was particularly pleased with my convertible backpack-briefcase.

It only took ten or twelve minutes to reach the hotel and the last bit was a little climb. I arrived back at the hotel about 11:20 and sat down at one of the patio tables in the shade to rest and make some notes. Ten minutes later I saw Marco's microbus pull in through the garden gate. Suddenly it was like old home week. There were Phil and Chris Switzer, Bob and Barbara Hance (through whom I had learned of this group's tour), and Carol Ballew--all from Colorado. Then there were Bob Dalporto of Llamas Magazine, Steve Berger from Iowa and Steve Knoblock, President of AOBA. Finally I met Carlos Velaochaga, the Peruvian professor of anthropology who had shepherded numerous groups of llama owners on their trips to Peru over the past years. Even though he had been at the ILA meeting in Snowmass, somehow I had just never met him.

There was a lot of hustle and bustle as the group's luggage was unloaded and carried down to their rooms by Rolondo and Marco while Ursula oversaw their checking in. There was an air of excitement as we all sat down to lunch in the dining room. After lunch members of the group either napped and settled in or went on a tour of Arequipa with Marco and Ursula. As planned, Mauricio picked me up upon his return to the Expo. I never tired of this trip from hotel to Expo. It allowed more and more observation of details of life, both city and country. This time I was struck by the number of dogs peering over the edges of the walls surrounding what must be flat roofs. They are said to be guard dogs for the house. I wondered if they led their whole lives up there. Would there be a dog house for them?

While Mauricio tended to his Expo business, I just hung around the alpaca and llama pens, looking over the new arrivals. The pens seemed more crowded than ever. Since the alpaca show was to start Thursday afternoon, a vet check of all the animals was in progress. Checking teeth seemed most important, as show numbers were not to be distributed to any animals with defective mouths. Once the animal had passed inspection its show number was hung around its neck on a string.

About 3:00 o'clock Mauricio collected me and we set out for a bicycle factory. I had thought we might stop at one of the very small workshops I had seen driving to and from the fair. But no, we went to a very large, modern factory with a modern office building and several large industrial buildings, outside of which were stacks of boxed bicycles of various sizes waiting for shipment. We were ushered into the office of some CEO or vice-president, as Mauricio had already called and explained our problem. I had our catalog with pictures of our carts and also our postcard of Jester driving, along with some sketches I had made. One of the problems, as I now learned, was that we were to demonstrate the first ever llama cart pulling in Peru at the big closing ceremony of the Expo on Sunday afternoon. And here it was Wednesday afternoon.

After a brief perusal of my pictures and drawings, the CEO, who spoke very good English, led us directly down to the building where the construction of new designs took place. It was most interesting to see that one of these new designs was a tricycle trash collection unit--something sorely needed. There were many parts of bicycle-related items sitting around. My eye fell immediately on what was clearly a seat with a footboard below and a flat platform sticking out behind the seat. It looked very much like a cart seat and basket. In fact, it was part of a tricycle taxi. "Look!" I exclaimed to Mauricio, "There we have it, almost, at least the main body of it."

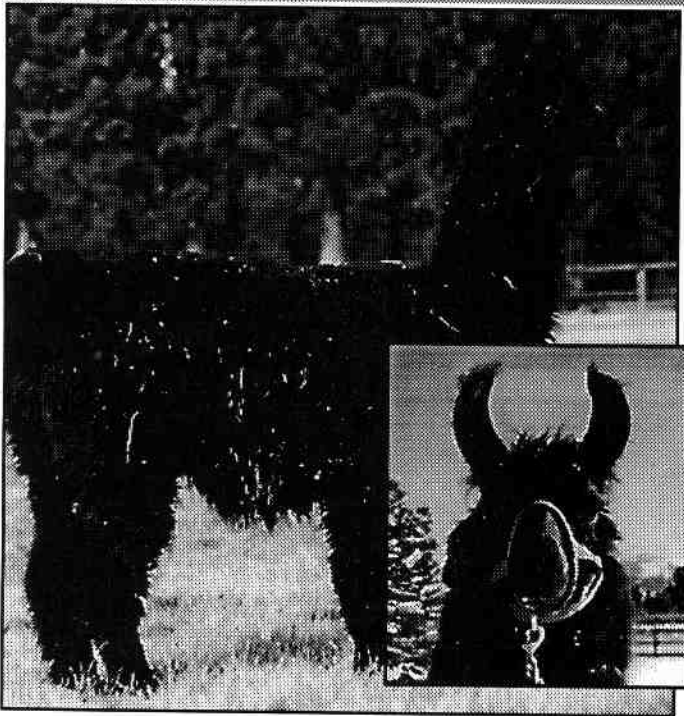
The three of us plus a couple of the workmen gathered around the item. There were various sizes of wheels and other materials stacked about. I pointed out one size of wheel I thought

*Continued on page 28*



# GOING OUT OF BUSINESS SALE

Any Reasonable Offer Accepted!



## "OBSESSION" DOB 10/93

- Female, Doolittle/Sitting Bull granddaughter, breeding to Macho Camacho son!
- Heavy, Kinky Red & Silver Wool with exceptionally large bone and size. Expected to be 350+ pounds! **\$8,000**

## DOOLITTLE DAUGHTER

### "SNOWBIRD"

- Medium wool, 375 lbs. Breeding to Macho Camacho son! We expect another wonderfully, wooly llama!
- Wooly daughter is pictured above! **\$4,900**

## SOPRIS LLAMA PACK

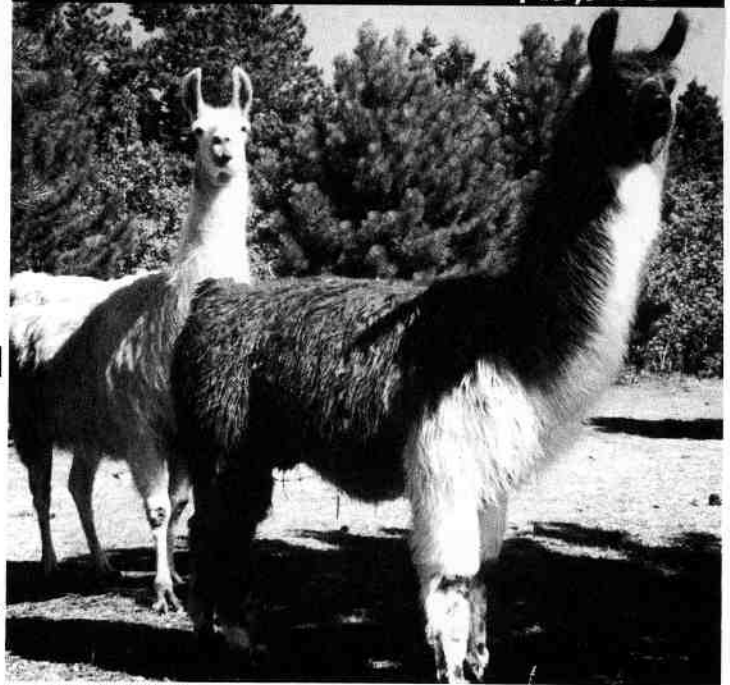
- Never used, purchased 7/94. Deluxe setup w/wood frame, red panniers & therma-rest pads, cinches, rain cover... Paid \$525, **\$475**

## MACHO CAMACHO SON

"INGRACHO" DOB 7/92

### An Incredible Herdsire!

- Winner at Estes Park-Heavy Wool Halter Class, 3 pts. First time shown, incredible show potential!
- Jackpot/Fortunato on dam's side. A wonderful outcross!
- A solid black, Patterson breeding with 5 generations of solid brown/black wool behind him!
- Excellent in conformation, he will add bone and heavy, dark wool to your herd! **\$13,500**



**SAVE 15%**

**WHEN YOU PURCHASE ALL 3 LLAMAS!!**

(instead of \$26,400 you'll pay \$22,440 for 3 possible llamas) **WHERE CAN YOU GET LLAMAS AT \$4488 AND GET THIS MUCH HERD POTENTIAL AND FUTURE STUD FEES?**

**ACT FAST BECAUSE THIS WON'T LAST LONG!!**

Call or write for an appointment or information:

**CHRIS & CATHY NOWAK, 2966 CEDAR MOUNTAIN RD, DIVIDE, COLORADO, (719) 687-2631**

# ESTES PARK WOOL MARKET LLAMA SHOW

## YOUTH SHOWMANSHIP: Sub-Junior (under 8)

1 Bandy	Brittany Lillie	Rocky Canyon Ranch	Lyons, CO
2 Ayri's Matchless	Ryan Swain	Grubstake Llamas	Eaton, CO
3 Tarr	Tyler Simpson	Echo Hawk Ranch	Boulder, CO
4 East Fork Narcissis	Leslie Rogers	Dome Rock Llamas	Florissant, CO
5 Blythe	Kelcee Dickman	Dickman's Rainbow Llamas	Theford, NE
6 RPL Cinnamon Candy	Page Williamson	Rancho Poco Llamas	Idaho Springs, CO

## YOUTH SHOWMANSHIP: Junior (8 -12)

1 Little Dude	Tiffany Price	Little Dude Ranch	Eaton, CO
2 Ayri's Lucky Chance	Christopher Swain	Grubstake Llamas	Eaton, CO
3 Ayri's Matchless	Clint Swain	Grubstake Llamas	Eaton, CO
4 Cum-Laude	Tori Everhart	Quakey Brake Llamas	Woodland Park, CO
5 Stage Stop Zig Zag	Cynthia Owen	Stage Stop Llamas	Florissant, CO
6 Stage Stop Larry	Lew German	Stage Stop Llamas	Florissant, CO
7 RPL Jamboree	Tamsin Williamson	Rancho Poco Llamas	Idaho Springs, CO
8 G.L.L. Kodiak	James Owen	Stage Stop Llamas	Florissant, CO

## YOUTH SHOWMANSHIP: Intermediate (13 - 18)

1 Blythe	Jennifer Harper	Dickman's Rainbow Llamas	Theford, NE
2 Joseph	Bonnie L. Kutscher	Snowcrest Llamas	Ward, CO
3 Baloo	Leslie Padilla		Gill, CO
4 Indian Peaks Cree	Niki Summers	Catalpa Llamas	Avondale, CO
5 Rocky Mtn. High Spirits	Tiffany Lester		Littleton, CO

## HEAVY WOOL HALTER - FEMALES: Juvenile

1 Milindi	Dr. LaRue Johnson	Shamba Sheep & Llamas	Windsor, CO
2 Chantilly Ace	Ellen Schreiner	Silver Sage Llamas	Casper, WY
3 Silver Belle	Cliff Harding	Harding Llama Ranch	Hotchkiss, CO
4 Overland Trl Sterling Rose	Mike Pettigrew	Overland Trail Llamas	Livermore, CO
5 IPR Free As The Wind	Alaine Byers	Indian Peaks Ranch	Ward, CO

## HEAVY WOOL HALTER - FEMALES: Yearling

1 Andean Starlight	Howard Kerstetter	Kahura Uyu Llamas	Bozeman, MT
2 Dances Smartly	Mary Beth Hartsough	Llamarage	Platteville, CO
3 Wind River's Narcissa	Bob Aue	L'Aue"Mas	Mitchell, NE
4 Twilight	Karen Sterling	Shining Star Ranch	Las Vegas, NM
5 Blythe	Leslie Dickman	Dickman's Rainbow Llamas	Theford, NE

## HEAVY WOOL HALTER - FEMALES: Two Year Old

1 Andean Autumn	Howard Kerstetter	Kahura Uyu Llamas	Bozeman, MT
2 PSL Kiva	Terry Mowbray	Needle Rock Wools	Longmont, CO
3 Free Spirit	Bob Aue	L'Aue"mas	Mitchell, NE

### *Grand Champion Heavy Wool Female*

Andean Starlight	Howard Kerstetter	Kahura Uyu Llamas	Bozeman, MT
------------------	-------------------	-------------------	-------------

### *Reserve Grand Champion Heavy Wool Female*

Dances Smartly	Mary Beth Hartsough	Llamarage	Platteville, CO
----------------	---------------------	-----------	-----------------

## HEAVY WOOL HALTER - MALES: Juvenile

1 Golden Seal	Howard Kerstetter	Kahura Uyu Llamas	Bozeman, MT
2 Shady B's Easy Rider	Sarah Blacher	Shady B Farms	Bozeman, MT
3 PSL Iryan Kara	Patti Howe	Painted Sky Llamas	Gillette, WY
4 Burrell	Tori Everhart	Quakey Brake Llamas	Woodland Park, CO
5 Lasher	Shelia Woodley	Wind Dancer Llamas	Hayden, CO

## HEAVY WOOL HALTER - MALES: Yearling

1 Cum Laude	Rose Mary Zeschin	Hillcrest Llama Ranch	Platteville, CO
2 Lotus Gingko	Bobra Goldsmith	Lotus Llamas	Longmont, CO
3 Ingracho	Catherine Nowak	Wildwood Llama Ranch	Divide, CO
4 Jewel's Sebastian	Cass Price	J 'n' L Llamas	Ft. Morgan, CO
5 PHF Nambe'	Sharon Beacham	Pheasant Hill Farm	Boulder, CO

Continued on page 19

# ESTES PARK WOOL MARKET LLAMA SHOW (CON'T)

## HEAVY WOOL HALTER - MALES: Two Year Old

1 Bardo	Howard Kerstetter	Kahura Uyu Llamas	Bozeman, MT
2 Rah	Melanie Rojko	Wind's Teeth Llamas	Breckenridge, CO
3 Stonehenge Ragamuffin	Donna Browne	The Peacock Farm	Ft. Lupton, CO
4 Polar Plus	Leslie Dickman	Dickman's Rainbow Llamas	Theford, NE
5 Macho Columbo	Suzanne Hartung	Rio Ante Ranch	Steamboat Springs, CO

## HEAVY WOOL HALTER - MALES: Adult

1 Andean Spirit	Howard Kerstetter	Kahura Uyu Llamas	Bozeman, MT
2 East Fork Narcissus	Cathy Nowak	Stage Stop Llamas	Florissant, CO
3 Gandy Dancer	Mary Beth Hartsough	Llamarage	Platteville, CO
4 Juan's Majestic Array	Bob Aue and Gene Kupke	Ll'Aue'mas & Lazy K. Llamas	Mitchell, NE
5 IPR Camacho Chief	Alaine Byers	Indian Peaks Ranch	Ward, CO

### *Grand Champion Heavy Wool Male*

Andean Spirit	Howard Kerstetter	Kahura Uyu Llamas	Bozeman, MT
---------------	-------------------	-------------------	-------------

### *Reserve Grand Champion Heavy Wool Male*

Bardo	Howard Kerstetter	Kahura Uyu Llamas	Bozeman, MT
-------	-------------------	-------------------	-------------

## OPEN PUBLIC RELATIONS

1 Nicolo	Rick Steadham	Shining Star Ranch	Las Vegas, NM
2 Andean Spirit	Howard Kerstetter	Kahura Uyu Llamas	Bozeman, MT
3 Fern's Mick Dundee	Daryl Wood	Limberlost Llamas	Oak City, UT
4 The Blizzard	Leslie Logan	J 'n' L Llamas	Ft. Morgan, CO
5 Targhee	Jerry Dunn	Bear Track Farm	Golden, CO

## NOVICE PUBLIC RELATIONS

1 Little Dude	Tiffany Price	Little Dude Ranch	Eaton, CO
2 M C Hammer	Dale Pettigrew	Overland Trail Llamas	Livermore, CO
3 G.L.L. Java	Mary Beth Hartsough	Llamarage	Platteville, CO
4 Rocky Mtn. Bounce	Bobra Goldsmith	Rocky Mountain Llamas	Longmont, CO
5 RM Taos	Julie Messick	Lla Mariposa Llamas	Monte Vista, CO

## YOUTH PUBLIC RELATIONS: Junior (8 -12)

1 Cheyenne Prince	Tiffany Price	Little Dude Ranch	Eaton, CO
2 Tabernash	Deidre Baird	Plum Valley Llamas	Sedalia, CO
3 December's Frosty	Rory Schilling	J 'n' L Llamas	Ft. Morgan, CO
4 RM Bolder	Cory Messick	Lla Mariposa Llamas	Monte Vista, CO
5 East Fork Narcissus	Lew German	Stage Stop Llamas	Florissant, CO
6 Ivory	Colleen Carley		Divide, CO
7 IPR Peru	Lauren Byers	Indian Peaks Ranch	Ward, CO
8 Kaubo	Gabi VonRoedern	Bear Track Farm	Golden, CO

## YOUTH PUBLIC RELATIONS: Intermediate (13 -18)

1 Talavi	Ben Riggs	Bear Track Farm	Golden, CO
2 Roman Centurion	Lloyd Wamsley		Golden, CO
3 Poohka	Sarah Lobser	Bear Track Farm	Golden, CO

## LIGHT WOOL HALTER - FEMALES: Juvenile

1 Leyenda	Kay Wilson	Sharlee Llamas	Peyton, CO
2 PSL Tia	Patti Howe	Painted Sky Llamas	Gillette, WY
3 Fitzgerald Crom Casey	Maxine Fitzgerald	Fitzgerald Crom	Hotchkiss, CO
4 Rainbow Jasmine	Leslie Dickman	Dickman's Rainbow Llamas	Theford, NE
5 Rivers Divide Miss Steelie	Tammy Zornes	Sharlee Llamas	Peyton, CO

## LIGHT WOOL HALTER - FEMALES: Yearling

1 Rocky Mtn. Tashi	Bobra Goldsmith	Rocky Mountain Llamas	Longmont, CO
--------------------	-----------------	-----------------------	--------------

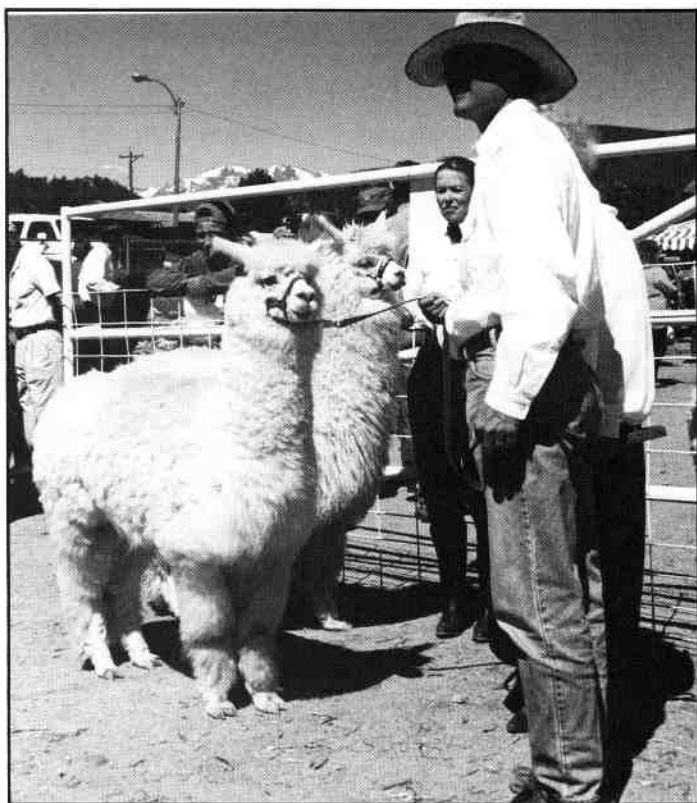
### *Grand Champion Light Wool Female*

Rocky Mtn. Tashi	Bobra Goldsmith	Rocky Mountain Llamas	Longmont, CO
------------------	-----------------	-----------------------	--------------

### *Reserve Grand Champion Light Wool Female*

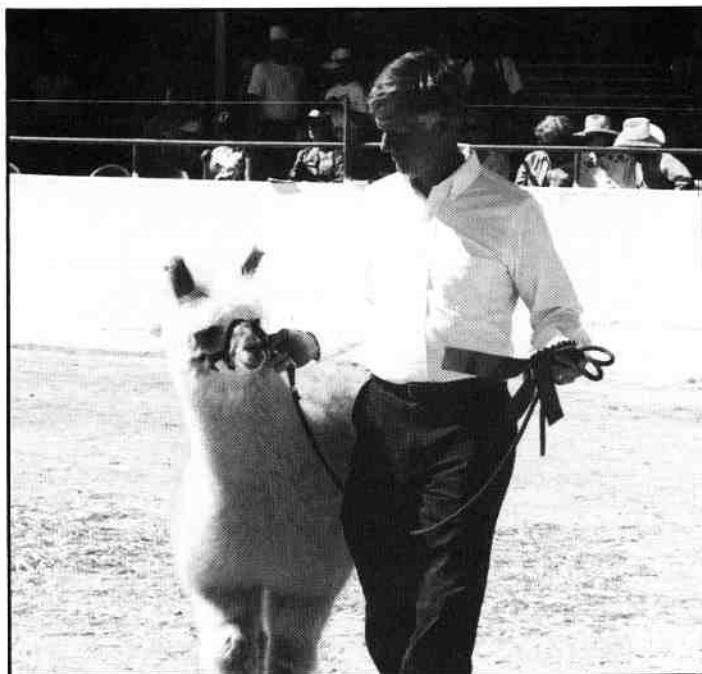
Leyenda	Kay Wilson	Sharlee Llamas	Peyton, CO
---------	------------	----------------	------------

Continued on page 22

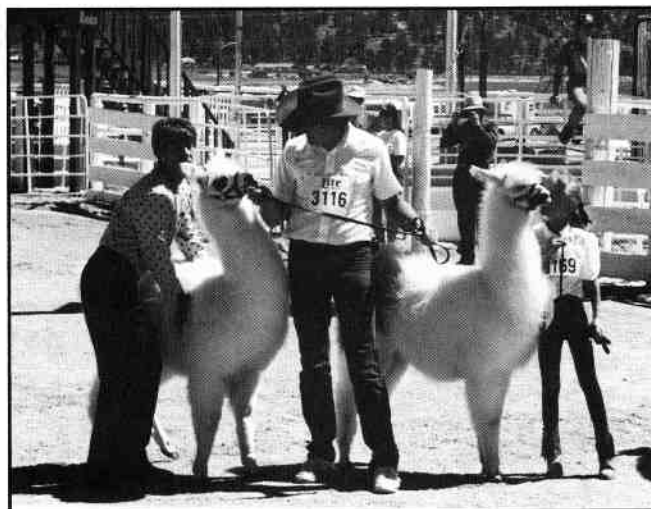


Mary Reed and Anthony Stachowski showing their alpacas.

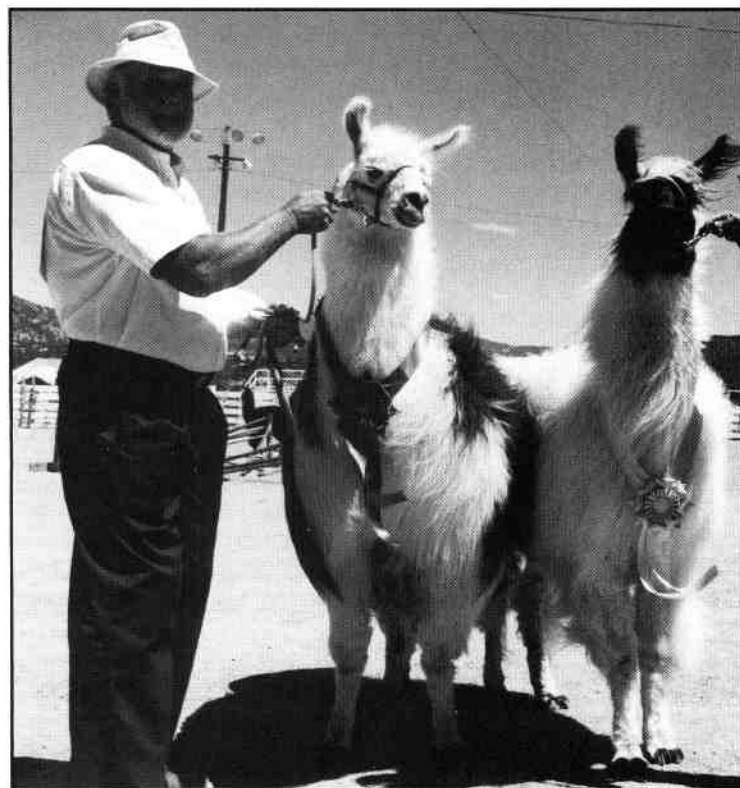
## Estes Park Wool Market Llama & Alpaca Shows



An alpaca in the Showing



Jodi Sleeper, Judge, studying conformation.



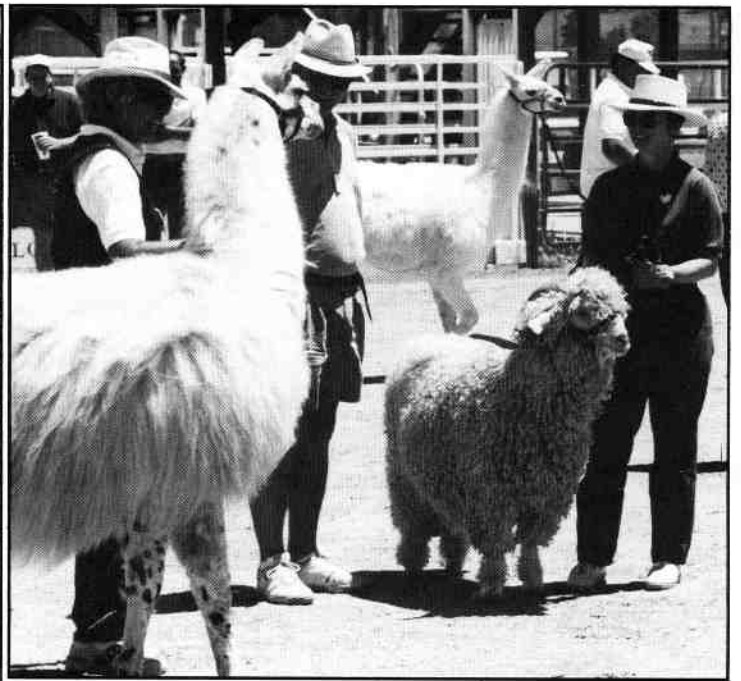
Howard Kerstetter with Andian Spirit and Peruvian Bardo: Grand Champion and Reserve Champion Heavy Wool Males



Alison Gould and Tori Everhart having a great time.



**Sally German and Narcissus on the Public Relations Course.**



**Jerry Dunn and her llama meeting a goat in the Public Relations Course.**



**Steve Knoblock and his alpaca**



**Tyler Simpson and the obstacle course.**

**We want to thank Susan Ley,  
Kay Meyer and Bob Riley for the  
use of their photographs.**

# ESTES PARK WOOL MARKET LLAMA SHOW (CON'T)

<b>LIGHT WOOL HALTER - MALES: Juvenile</b>			
1 Catalpa's Drizzle	Niki Summers	Catalpa Llamas	Avondale, CO
2 Sushi's Autum	Susan Leiphart	Leiphart Lamarama	Boulder, CO
<b>LIGHT WOOL HALTER - MALES: Yearling</b>			
1 Patches of Light	Teri Price	Little Dude Ranch	Eaton, CO
2 BOJ	Roger Miller	High Line Llamas	Colorado Springs, CO
3 Highsmine	Karen Sterling	Shining Star Ranch	Las Vegas, NM
<b>LIGHT WOOL HALTER - MALES: Two Year Old</b>			
1 Rocky Mtn. Bounce	Bobra Goldsmith	Rocky Mountain Llamas	Longmont, CO
2 Bandy	Spring Lillie	Rocky Canyon Ranch	Lyons, Co
<b>LIGHT WOOL HALTER - MALES: Adult</b>			
1 Mr. "Bo" Jangles	Randy Zornes	Rivers Divide Llamas	Peyton, CO
2 RM Taos	Julie Messick	Lla Mariposa Llamas	Monte Vista, CO
3 The Blizzard	Leslie Logan	J 'n' L Llamas	Ft Morgan, CO
<b>Grand Champion Light Wool Male</b>			
Rocky Mountain Bounce	Bobra Goldsmith	Rocky Mountain Llamas	Longmont, CO
<b>Reserve Grand Champion Light Wool Male</b>			
Mr. "Bo" Jangles	Randy Zornes	Rivers Divide Llamas	Peyton, CO
<b>ALTERED LLAMA HALTER: Two Year Old</b>			
1 Red Feather	Debby Rothwell		Denver, CO
2 Cochise	Debby Rothwell		Denver, CO
3 Eagle	Debby Rothwell		Denver, CO
4 Nina Muneca's El Guapo	Julie Messick	Lla Mariposa Llamas	Monte Vista, CO
<b>ALTERED LLAMA HALTER: Adult</b>			
1 RM Bolder	Heather Messick	Lla Mariposa Llamas	Monte Vista, CO
2 Primo Capuccino	Cory Messick	Lla Mariposa Llamas	Monte Vista, CO
3 Raven	Spring Lillie	Boulder Ridge Ranch	Lyons, CO
4 Chinook	Kyle Shelby	Indian Peaks Ranch	Ward, CO
<b>Grand Champion Altered Llama</b>			
Red Feather	Debby Rothwell		Denver, CO
<b>Reserve Grand Champion Altered Llama</b>			
Cochise	Debby Rothwell		Denver, CO
<b>YOUNG PACK LLAMA</b>			
1 Spirit	Pat Militzer	Rolling Rock Llamas	Boulder, CO
2 Timberline's Kaibab	Mary Mauz	Timberline Llamas	Golden, CO
3 Kaubo	Gabi VonRoedern	Bear Track Farm	Golden, CO
4 El Monte	Susanne Hartung	Rio Ante Ranch	Steamboat Springs, CO
5 Masquerade/Shadow Ridge	Steve Gaunt	Shadow Ridge Ranch	Golden, CO
<b>PACK STRING CLASS</b>			
1 RM Taos, Bolder, El Guapo	Julie Messick	Lla Mariposa Llamas	Monte Vista, CO
2 Targhee, Basalt, Midnight	Jerry Dunn	Bear Track Farm	Golden, CO
3 Talavi, Niwot, Romeo	Lloyd Wamsley	Bear Track Farm	Golden, CO
4 Flannigan, No Ears, Ruedi	Dee Goodman	X <sub>1</sub> Llamas	Akron, CO
5 Cochise, Eagle, Red Feather	Debby Rothwell		Denver, CO

Continued on page 24

**National Western Stock Show  
is January 21st and 22nd.**

**PLEASE READ**

**!!IMPORTANT ANNOUNCEMENT!!**

In response to input from our many loyal friends and, being sensitive to the needs of both our consignors and buyers, Living Art, Inc. regretfully announces that the **GOLD RUSH '94 FALL SALE**, scheduled for September 9th and 10th, 1994 in Brighton, Colorado, has been **CANCELLED**. Living Art, Inc. **WILL RETURN IN 1995**, however, with a **NEW FALL SALE** in a great *new* location!

The **GOLD RUSH '95 SPRING SALE**, set for April 21st-22nd, 1995 at the Utah State Fairpark in Salt Lake City, Utah, is proceeding **RIGHT ON SCHEDULE**, and Living Art, Inc. is **NOW ACCEPTING CONSIGNMENTS** for the Spring Sale. Please **CALL 1-800-484-9756 (CODE 8759) IMMEDIATELY** to reserve your sale positions.

We sincerely hope that this change in schedule does not cause inconvenience. **WATCH OUR ADS** for future information on the **NEW 1995 FALL SALE!**

Very best wishes,

*Frank and Eleanor Palmisano* - Living Art, Inc./Gold Rush Sales

# ESTES PARK WOOL MARKET LLAMA SHOW (CONT)

## COSTUME

1 Chasin' Rainbows	Dustin Dickman	Dickman's Rainbow Llamas	Thedford, NE
2 Blythe	Kelcee Dickman	Dickman's Rainbow Llamas	Thedford, NE
3 Mariah's Tess	Tori Everhart	Quakey Brake Llamas	Woodland Park, CO
4 East Fork Narcissus	Colleen Carley	Stage Stop Llamas	Florissant, CO
5 Shadababe/Caleb	Jaci Aue & Linda Batt	Bo-Jack LI "Aue" Mas	Mitchell, NE

### MEDIUM WOOL HALTER - FEMALES: Juvenile

1 Shadababe	Jaci Aue	LI "Aue" mas	Mitchell, NE
2 Rocky Mountain Jigsaw	Bobra Goldsmith	Rocky Mountain Llamas	Longmont, CO
3 Balada de Solomon	Susie Frye	Frye Llamas	Winter Park, CO
4 RNL Estrellita	Jan Redenbarger	Rednak Llamas	Golden, CO
5 RPL Jamboree	Rita Williamson	Rancho Poco Llamas	Idaho Springs, CO

### MEDIUM WOOL HALTER - FEMALES: Yearling

1 RPL Cinnamon Candy	Rita Williamson	Rancho Poco Llamas	Idaho Springs, CO
2 PSL Mandala	Sandy Mueller	Painted Sky Llamas	Gillette, WY
3 Rocky Mountain Impression	Bobra Goldsmith	Rocky Mountain Llamas	Longmont, CO
4 Nina De Saros	Jack Goetzinger	Shade Tree Ranch	Fort Lupton, CO
5 RNL Angelita	Jan Redenbarger	Rednak Llamas	Golden, CO

### MEDIUM WOOL HALTER - FEMALES: Two Year Old

1 Llamarage's Sashay	Mary Beth Hartsough	Llamarage	Platteville, CO
2 Rocky Mtn. Puzzle	Bobra Goldsmith	Rocky Mountain Llamas	Longmont, CO

### MEDIUM WOOL HALTER - FEMALES: Adult

1 Gee Wiz	Jim Haas	Soda Creek Llamas	Evergreen, CO
-----------	----------	-------------------	---------------

#### *Grand Champion Medium Wool Female*

Llamarage's Sashay	Mary Beth Hartsough	Llamarage	Platteville, CO
--------------------	---------------------	-----------	-----------------

#### *Reserve Grand Champion Medium Wool Female*

Shadababe	Jaci Aue	LI "Aue" mas	Mitchell, NE
-----------	----------	--------------	--------------

### MEDIUM WOOL HALTER - MALES: Juvenile

1 PSL Reno	Sandy Mueller	Painted Sky Llamas	Gillette, WY
2 Ghost Buster	Mary Beth Hartsough	Llamarage	Platteville, CO
3 Beaujolais	Mike Pettigrew	Mercedes Pens	Aurora, CO
4 John Paul Too	Maury Cox	P/M Llamas	LaSalle, CO
5 Rev. George	Lee Kemper	Kemper Ranch	Estes Park, CO

### MEDIUM WOOL HALTER - MALES: Yearling

1 Moab	Ben Riggs	Bear Track Farm	Golden, CO
2 Mr. Mancha	Ellen Schreiner	Silver Sage Llamas	Casper, WY
3 Redrock Tyler	Aaron Price	Little Dude Ranch	Eaton, CO
4 El Monte	Suzanne Hartung	Rio Ante Ranch	Steamboat Springs, CO
5 Flint	Judy Gerzetch	Wildwind	Cheyenne, WY

### MEDIUM WOOL HALTER - MALES: Two Year Old

1 GLL Java	Mary Beth Hartsough	Llamarage	Platteville, CO
2 El Serrano	Susie Frye	Frye Llamas	Winter Park, CO
3 The Bushwacker	Leslie Logan	J 'n' L Llamas	Ft. Morgan, CO
4 Spirit	Pat Militzer	Rolling Rock Llamas	Boulder, CO
5 RM Dubloon	Betty Miller	Mountain Meadow Llamas	Colorado Springs, CO

### MEDIUM WOOL HALTER - MALES: Adult

1 Tabernash	Ron Baird	Plum Valley Llamas	Sedalia, CO
2 CCL Hot Fudge Sundae	Faye Tsakopulos	Ears To You Llama Ranch	Monument, CO
3 Nimbus	Suzi Gardner	Prestwick Knoll Llama Ranch	Arvada, CO
4 Dusty Surprize	Susan Miller	County Line Llamas	Sheridan Lake, CO
5 Five-Star	Gail Segreto	High Hopes Llamas	Elizabeth, CO



# ESTES PARK WOOL MARKET LLAMA SHOW (CON'T)

## *Grand Champion Medium Wool Male*

GLL Java Mary Beth Hartsough Llamarage Platteville, CO

## *Reserve Grand Champion Medium Wool Male*

Moab Ben Riggs Bear Track Farm Golden, CO

### PRODUCE OF DAM

1 Aida Howard Kerstetter Kahura Uyu Llamas Bozeman, MT  
2 Rocky Mtn. Chippewa Bobra Goldsmith Rocky Mountain Llamas Longmont, CO

### GET OF SIRE

1 Andean Spirit Howard Kerstetter Kahura Uyu Llamas Bozeman, MT  
2 M C Hammer Dale Pettigrew Overland Trail Llamas Livermore, CO  
3 Mr. Bo Jangles Tammy Zornes Rivers Divide Llamas Peyton, CO  
4 PHF Solomon's Seal John Beacham Pheasant Hill Farm Boulder, CO  
5 Sargent York Brian Leiphart Leiphart Lamarama Boulder, CO

### OPEN PACK LLAMA

1 Fern's Mick Dundee Daryl Wood Limberlost Llamas Oak City, UT  
2 Tabernash Ron Baird Plum Valley Llamas Sedalia, CO  
3 The Blizzard Leslie Logan J 'n' L Llamas Ft. Morgan, CO  
4 Nicolo Rick Steadham Shining Star Ranch Las Vegas, NM  
5 Targhee Jerry Dunn Bear Track Farm Golden, CO

### NOVICE PACK LLAMA

1 Andean Spirit Howard Kerstetter Kahura Uyu Llamas Bozeman, MT  
2 RM Taos Julie Messick Lla Mariposa Llamas Monte Vista, CO  
3 Rocky Mountain Bounce Bobra Goldsmith Rocky Mtn. Llamas Longmont, CO  
4 Flannigan Dee Goodman X, Llamas Akron, CO  
5 M C Hammer Dale Pettigrew Overland Trail Llamas Livermore, CO

### OPEN OBSTACLE

1 Fern's Mick Dundee Daryl Wood Limberlost Llamas Oak City, UT  
2 Andean Spirit Howard Kerstetter Kahura Uyu Llamas Bozeman, MT  
3 Targhee Jerry Dunn Bear Track Farm Golden, CO  
4 Magi Rick Steadham Shining Star Ranch Las Vegas, NM  
5 Nicolo Rick Steadham Shining Star Ranch Las Vegas, NM

### NOVICE OBSTACLE

1 Rocky Mountain Bounce Bobra Goldsmith Rocky Mountain Llamas Longmont, CO  
2 RM Taos Julie Messick Lla Mariposa Llamas Monte Vista, CO  
3 Midnight Express Jerry Dunn Bear Track Farm Golden, CO  
4 Niwot Jerry Dunn Bear Track Farm Golden, CO  
5 Kahlua 'n' Kreme Luanne Albert J 'n' L Llamas Ft. Morgan, CO

### YOUTH OBSTACLE: Sub-Junior (Under 8 years)

1 No Ears David Goodman X, Llamas Akron, CO  
2 Jazz Man Tyler Simpson Echo Hawk Ranch Boulder, CO  
3 Ayri's Matchless Ryan Swain Grubstake Llamas Eaton, CO  
4 Nina Muneca's El Guapo Heather Messick Lla Mariposa Llamas Monte Vista, CO  
5 Bandy Brittany Lillie Rocky Canyon Ranch Lyons, CO  
6 Overland Trail's Mt. Shadow Leslie Rogers Dome Rock Llamas Florissant, CO  
7 Flannigan David Goodman Flannigan Akron, CO

### YOUTH OBSTACLE: Junior (8 -12)

1 No Ears Jacob A. Kirby X, Llamas Akron, CO  
2 Flannigan Amber N. Kirby X, Llamas Akron, CO  
3 Cheyenne Prince Tiffany Price Little Dude Ranch Eaton, CO  
4 IPR Peru Lauren Byers Indian Peaks Ranch Ward, CO  
5 Ayri's Matchless Clint Swain Grubstake Llamas Eaton, CO  
6 Redrock Tyler Aaron Price Little Dude Ranch Eaton, CO  
7 Ruedi Melissa A. Kirby X, Llamas Akron, CO  
8 Patches Of Light Aaron Price Little Dude Ranch Eaton, CO

Continued on page 26

# ESTES PARK WOOL MARKET LLAMA SHOW (CON'T)

## YOUTH OBSTACLE: Intermediate (13 - 18 Years)

1 Rocky Mtn. High Spirits	Tiffany Lester	Littleton, CO
2 McGillicutty	Spring Lillie	Lyons, CO
3 Llamarage's Bandit	Jeff Hartsough	Platteville, CO
4 Rufus	Brady Kutscher	Ward, CO
5 Baloo	Leslie Padilla	Gill, CO
6 Iryie Mon	Emily Plummer	Estes Park, CO
7 Snowdean Top Notch	Brandie Miller	Sheridan Lake, CO
8 Kahlua 'n' Kreme	Cass Price	Ft. Morgan, CO

### Open Performance Champion

Fern's Mick Dundee	Daryl Wood	Limberlost Llamas	Oak City, Utah
--------------------	------------	-------------------	----------------

### Open Performance Reserve Champion

Nicolo	Rick Steadham	Shining Star Ranch	Las Vegas, New Mexico
--------	---------------	--------------------	-----------------------

### Novice Performance Champion

Rocky Mountain Bounce	Bobra Goldsmith	Rocky Mountain Llamas	Longmont, Colorado
-----------------------	-----------------	-----------------------	--------------------

### Novice Performance Reserve Champion


RM Taos	Julie Messick	Lla Mariposa Llamas	Monte Vista, Colorado
---------	---------------	---------------------	-----------------------

## ROCKY MOUNTAIN RACE

1 The Bushwacker	Brien Logan	J 'n' Llamas	Ft. Morgan, CO
2 Nicolo	Rick Steadham	Shining Star Ranch	Las Vegas, NM
3 Fern's Mick Dundee	Daryl Wood	Limberlost Llamas	Oak City, UT
4 Rufus	Brady Kutscher	Snowcrest Llamas	Ward, CO
5 No Ears	Dee Goodman	X Llamas	Akron, CO




**GRAND VALLEY LLAMAS**



JUDY & CURT SEALY  
593 19-3/4 ROAD  
GRAND JUNCTION, COLORADO 81503  
(303) 241-7921


**Cololama Ranch**



"The Home of Quality Llamas"

Luanne "Lu" Williams 13546 Wamblee Trail  
303-838-5389 Conifer, CO 80433


**JUST ENOUGH RANCH LLAMAS**



**John & Emily Klauss**

210/510-4443 • P.O. Box 609 • Helotes, Texas 78023


**LONE STAR AGENCY**



601 N. Main Street  
P.O. Box 1998  
Hereford, Texas 79045  
1-800-322-7290  
Phone 806-364-0555  
FAX 806-364-7602

**KEN ROGERS**  
President

**WORLD CLASS F.A.R.M.S.**



**PROFESSIONAL SERVICES IN:**  
RATITE INSURANCE • LLAMA INSURANCE  
ALL LINES OF PROPERTY & CASUALTY INSURANCE  
INVESTMENT GRADE OSTRICH, EMU, LLAMA & FALLOW DEER

# NOTES FROM RMLA NEWSLETTERS IN THE PAST:

---

by Erma Hast

## For The Year of 1986

**January:** RMLA members participated in the first llama show held at the National Western Stock Show in Denver, CO.

**February:** A paper titled "Pregnancy Diagnosis in llamas - A Dilemma?" by Dr. LaRue Johnson was included in the February Newsletter.

RMLA members were notified that the Joint Governance Committee scored a breakthrough and merging of all registry data was to begin at once establishing the International Llama Registry. The merger included data from CIS, LTR, and Patterson's into one database.

**June:** RMLA Conference and Expo was held in Casper, WY, with Dan and Ellen Schreiner as Co-Chairmen.

Membership fees were increased to \$30.00 per year for individuals and \$50.00 per year for ranches starting July, 1986.

Officers elected: President - Wally White; Vice President - Anne Johnson; Secretary - Erma Hast; Treasurer - Sandy Hackbarth.

**July:** The 2nd Annual Chama Llama Race was held on the 12th at Chama, New Mexico with 20 llamas and handlers.

The 4th Annual Fairplay Pack Llama Race was held on the 26th. Last year there were 42 llamas.

**August:** The 2nd Annual Wind River Llama Rendezvous was held in Lander, Wyoming.

**September:** A Llama Show was held at New Mexico State Fair in Albuquerque, New Mexico.

RMLA Library was organized by Chris Switzer.

RMLA's Executive Board approved motion specifying 17% of RMLA annual budget for research.



## LIBRARY NOTES

---

By Chris Switzer

I wanted to share with everyone the comments that come back with some library items:

"You might be interested in learning that one of our Llama's took 3rd place in the Short Wool Halter Class division of the county fair. We feel that the things we learned from the video and the book helped us to accomplish this."

Also, just recently, a person called and asked for books for preschoolers for a library program. In the past, a video has been requested to show a group who were going to visit a farm. 4H children have been shown a video too.

Just be sure to give me some notice if you want to do this sort of thing. I'd suggest previewing the library item first.

I started the library in 1986 and it has grown in size and popularity over the years. New members check-out the majority of items and videos are the most popular. Many times requests

come for a particular subject - packing, newborns, wool, or training. I always suggest books along with videos.

My policy on videos is to send 2 and put you on the waiting list for others. With a 2 week check-out on videos, they go out and come back in pretty quickly. Books have a 1 month check-out.

RMLA has a budget for the library - for new items plus office supplies and to cover shipping. RMLA pays the shipping to you and you pay it back. I have never charged overdue fines, but some people have made donations in that regard. I do sometimes send "reminder" postcards when something is late coming back.

Many thanks to those of you who have made monetary donations to the library and also for books and articles that you've sent. Suggestions and ideas are always welcome.



## CARD, COMB, SPIN, KNIT, FELT, LEARN, PRACTICE and SHARE IDEAS

COME ENJOY THE COMPANY OF OTHER LLAMA AND ALPACA OWNERS WHO ARE OVERWHELMED BY AN ACCUMULATION OF FIBER, OR DON'T KNOW WHAT TO DO NEXT!

Gather it all up, along with any equipment you have and a sack lunch. Spend a few hours or the entire day uninterrupted by phone or family. Count on homemade soup, snacks and drinks.

EVERY THURSDAY IN OCTOBER

*No charge, of course; just let me know you're coming.*

Sharon Beacham, 2380 North 95th Street, Boulder, Colorado 80301 303-666-9437



## A SERENDIPETOUS VISIT TO PERU: (CON'T)

would be about right. Then I explained to the CEO about the dimensions of the shafts and the height they should be on the llama. A workman fetched two pieces of curved pipe and put the end of one under the footboard of the basket, indicating how it could be attached and hold the weight from underneath. They could, of course bend the pipe any way necessary. I suggested that they cut off the platform from behind the seat and explained that while there should be some light weight on the front of the shafts, the passengers' weight should be quite evenly balanced over the wheels so that no heavy weight would be thrown forward onto the shafts being supported by the llama. An axle and a pair of wheels were brought. The body of the cart was lifted above the axle. It almost looked like a cart already.

My drawings and dimensions for the shafts

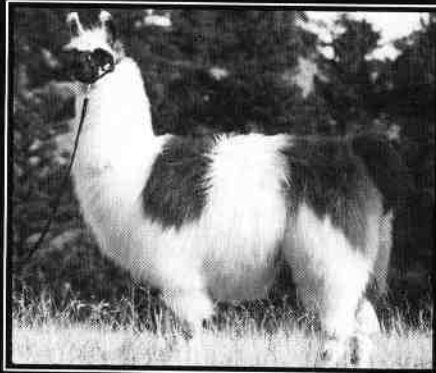
were left with the foreman. Mauricio dropped me at the hotel on his way home. It had been a busy day. I found Carol Ballew down in our room unpacking after the city tour. I stretched out on my comfortable bed while she reported on the group's flight down and their one-night stay in Lima. Dinner at 7:30 that night was a festive "Welcome Banquet" for the group, who were all introduced to Tony Anderberg and Mauricio de Romano. After dinner the group's program for the next few days was outlined. Thursday morning was to be a lecture by Dr. Julio Sumar on judging alpacas, followed by attendance at the alpaca show in the afternoon. I very much hoped that I could attend this lecture and still get in the necessary training session with Tigre and Blanco. Mauricio said that would be fine and he would arrange my transport.



*This article will be continued in November.*

# MC Hammer = Star Maker

★ ★ ★ ★ ★ ★ ★ ★ ★ ★ ★ ★ ★ ★



**MC HAMMER**  
(LW The Ambassador X T.Y. Button)  
**8X Grand Champion**



**FANCY PANTS**  
(MC Hammer X Pedraza)  
**Grand Champion Heavy Wool Female**  
NWSS '94  
Bred by Mike & Dale Pettigrew  
Owned by David & Susan Tvrdy



**SHAMBA MILINDI**  
(MC Hammer X Makonde)  
**Champion Juvenile Heavy Wool Female**  
Estes Park Wool Market '94  
Bred by Dr. LaRue & Mary Johnson  
Owned by Bruce & Gay Ellis



**DANCES SMARTLY**  
(MC Hammer X Belle E. Dancer)  
**Reserve Grand Champion**  
**Heavy Wool Female**  
Estes Park Wool Market '94  
Bred by Joe & Mary Beth Hartsough

## Breed Your Own Star!

Fee: \$1000 Multibreeding discount  
Female or Stud-Quality Male Guaranteed

★ Purchase a Hammer Cria or Hammer-bred Female ★



**EASTWARD**  
L•L•A•M•A•S  
**INN EDEN**

Gale & Marge Armstrong  
5643 E. 2300 N.  
Eden, Utah 84310-0013  
801/745-2297

Call us Today

**Overland Trail**  
llamas

Mike & Dale Pettigrew  
168 Emerald Mountain Court  
Livermore, CO 80536 • 303/493-2335  
35 miles NW of Fort Collins

## FIBER . . . NOW WHAT? (CON'T)

- second sheet of tissue paper to the short edge of the first. Line the second sheet up with the cardboard and continue pinning the elastic down the center. Add glue and fiber as before. Repeat with a third piece of paper.
6. Tape the remaining 3 tissue papers together to match the ones under the fiber. Place on top. Use enough pins to hold the layers together. Turn the whole thing over, so you can see the elastic through the paper. After it is turned, roll it up from one end to the other, jellyroll style.
  7. Set the zig zag stitch on the sewing machine the same width as the elastic and fairly close together. Unroll and remove pins as you stitch the elastic to the fiber, through both layers of paper, without stretching. Tear the tissue paper away.
  8. Lay the fiber out flat, elastic side down. Apply a generous line of glue on top of the stitching. Allow to dry. You now have a long strip of "hair" ready to sew to the baseball cap base. Adjust the cap size before proceeding.
  9. Pin one end of the elastic, with the long side of the fiber hanging down, to the outside edge of the cap. Start where the edge of the bill was attached. Without stretching, continue pinning the elastic around the sides and back to where the opposite edge of the bill was. Go across the size adjustment strap without stretching the elastic. It's not necessary to attach the elastic to it. Cut the elastic to the right length and whipstitch the top edge to the cap, from the inside, by hand. Stitch the ends of the elastic securely.
  10. Smooth the short ends of the fiber up against the cap. Pin and stitch the second row of fiber about 1 1/2 inches above the first row, covering the short ends and holding them in place. Start and stop even with the first row.
  11. Circle the third row completely around the cap, forming bangs over the center front. Repeat for the fourth row. Continue the fourth row in a spiral, or cut another section to finish covering the cap.
  12. Style the wig by shaking and patting. Use a curling iron on it if you want. Hold with hairspray. It will shed some, but that's part of the fun. Be prepared with your camera when others try it on; a creation like this seems to bring out the clown in everyone.

If you want something really weird, try large, matted pieces of fiber that contain long guard hair. Sew them by hand directly to the cap. Create a style as you work.

There will be a wig on display in the wool room at the RMLA Conference. Stop by and try it on!

## SEE YOU AT THE CONFERENCE!

### FOUR CORNERS LLAMA AND ALPACA BAZAAR

*By Ted Earley*

The Four Corners Llama/Alpaca Bazaar was held at the Montezuma Fairgrounds in Cortez, Colorado on July 16 & 17. It was the first event of this nature and certainly a challenge for the group. Most everyone pitched in with enthusiasm and positive attitudes to make it happen.

It's estimated between five and six hundred people attended during the two-day event. There were activities scheduled throughout the two days with lots of spectator interest and participa-

tion. There were between 40 to 50 animals brought by the ranch participants. They were shown in a "mini" parade and many of them participated in the events.

Although it was obviously a success in educating interested people about llamas and alpacas, it will take some time to assess the effectiveness of the event as a marketing tool.

# Are you concerned about your llamas' /alpacas' nutrition?

Are they getting the phosphorus, selenium, and zinc they need?  
Do they have access to vitamin E to combat stress and resist disease?  
Are you providing them with the trace minerals and vitamins necessary to promote health, growth, and reproduction?

**Cache La Poudre Minerals offers balanced mineral and vitamin supplements to meet all these needs. In different formulas to complement different feeding situations.**

*Based on llama research at Colorado State University Veterinary Teaching Hospital.*



## MINERALS

Compare our analysis and our prices.

Call now to order or receive a brochure:

**Mike Pettigrew 800-758-0825 • 303-493-2335**

168 Emerald Mountain Court • Livermore, Colorado 80536

### Supplement #1

For late or non-irrigated summer, fall or winter pastures; feeding grass hay.

25 lbs. .... \$29.00  
50 lbs. .... \$55.00

### Supplement #2

For late or non-irrigated summer, fall or winter pastures; feeding alfalfa or a grass hay that is low in phosphorus.

25 lbs. .... \$29.00  
50 lbs. .... \$55.00

### Supplement #3

For spring or irrigated pastures; feeding alfalfa hay, or a grass hay that is low in phosphorus.

25 lbs. .... \$24.00  
50 lbs. .... \$45.00

*Prices do not include shipping.*

# ALPACA SHOW RESULTS AT THE WOOL MARKET

## Male Juvenile

### *Dark & Light Brown*

Longos Catfish Charley  
Rocky Rococo  
Shadow Grande  
DA Tuco

Apple Valley Alpacas  
American Pride Alpacas  
Serendipity Farm  
Diamond Alpacas

Ron Hinds  
David Diamond

### *White*

Alpine Express  
Peruvian Snowstorm

Castle Hill Farm  
Aviana Farms

Nola Graham  
Ken Madl

### *Light Fawn*

Western Gold  
Dusty of Log Hill  
Armondo  
Cochise  
NWA, Ltd Snapple

Alpacas of Colorado  
Log Hill Alpacas  
Northwest Alpacas  
Rocky Mt. Alpaca Farm  
Northwest Alpacas

Susan Scott  
Tom Harper  
Janice Hansen

### *Gray*

So Lovely's Nimbus  
Kahlua's Cirrus

Hidden Valley Alpacas  
Hidden Valley Alpacas

Diana Moberley  
Diana Moberley

### *Pinto-Fancy:*

Paco of Log Hill  
Sokratees

Log Hill Alpacas  
Hance Ranch

Tom Harper  
Mary Hance

## Male Yearling:

### *Dark Brown*

Canadian Express  
Sul Tan Von HR  
KPR Victory  
Monsieur Wookier  
Zuni

Castle Hill Farm  
Mystic Woods Ranch  
Knoblock's Ranch  
Mountain Sight Alpacas  
Mountain Sight Alpacas

Nola Graham  
Rita Hamel  
Leslie Clancy  
Mary Forte-Goodman

### *White-Light Fawn-Dark Fawn*

Fabio  
Klein

Fantasy Farm  
Three Hawks Ranch

Barbara Laird  
Mary Reed

### *Gray*

Silver Medal  
Da El Nino  
KPL Legacy  
Mathew Quigley

Chagrin Valley Alpacas  
Diamond Alpacas  
Knoblock's Prairie Ranch  
Cow Creek Llama

Mary Reed  
Rita Hamel  
Steve Knoblock  
Therese Pantazakoos

## Adult Males

### *Black-Light Brown*

Rudolph  
Nat King Cole  
Faiks Novio

Chualar Canyon Ranch  
Mary Ann Burns  
Faiks Alaskalpacos

Armanda Griffiths  
Rita Hamel  
Janet Faiks

### *White*

Peruvian Don Julio  
King Solomon  
Snowmass Prince Caspian

Northwest Alpacas  
Fantasy Farm  
Shear Delight

Barbara Laird  
Gary Johnson

### *Light Fawn*

Seeds of Gold  
Sir Winston of Melbourne

Alpacas by Applegate  
Aviana Farms

Robert Applegate  
Ken Madl

### *Gray*

Wiki Wiki  
Quicksilver Codi  
General Schwartzkopf

Chualar Canyon Ranch  
Hance Ranch  
Northwest Alpacas

Mary Hance

Continued on page 33



# ALPACA SHOW RESULTS (CON'T)

<i>Fancy</i>	Snowmass Coronado	Pacific Crest Alpacas	Greg Mecklem
	Magnum	Cow Creek Llamas	Lori Hockey
<b>Female Juvenile</b>			
<i>Black</i>			
	Amazing Gracey	Chualar Canyon Ranch	Armanda Griffiths
	NWA, Ltd Marge	Northwest Alpacas	
	Miss Amelia	Castle Hill Farm	Nola Graham
<i>Light Fawn</i>			
	PC Michell	Hance Ranch	Mary Hance
	Darling Taffy	Northwest Alpacas	
<i>Dark Fawn</i>			
	Rossanne	Northwest Alpacas	
	NWA, Ltd Geraldine	Northwest Alpacas	
<i>Gray-Pinto</i>			
	Peppermint Pattie	Log Hill Alpacas	Tom Harper
	Tullulah	Chualar Canyon Ranch	Armanda Griffiths
<b>Female Yearling</b>			
<i>Dark Brown-Light Brown</i>			
	Lanark's Jezabell	Lanark Llamas & Alpacas	Terry Bailes
	Elizabeth Arden Aloa	Pacific Crest Alpacas	Greg Meklein
<b>Female Adult</b>			
<i>Gray</i>			
	Mehling's Honey	Fireweed Ranch	Pamela Ray
<b>Male Yearling Suris</b>			
<i>White</i>			
	Gio	Hickory Lake Farm	Rita Hamel
	Hercules	Hickory Lake Farm	
	Lorenzo	Bolivian Suri Alpacas	Andy Tillman
<b>Male Adult Suris</b>			
<i>White</i>			
	Ciro	Hickory Lake Farm	Rita Hamel
<b>Open Obstacle</b>			
	KPR Legacy	Knoblock's Prairie Ranch	Tasha Knoblock



## PROPOSED BYLAW CHANGE

*by Dee Goodman and Sally German-Rucker*

The following Bylaw revision shall be voted on by the Rocky Mountain Llama and Alpaca Association Membership at the Annual Meeting in Longmont, Colorado, at the RMLA Conference.

### **Section 4.2 (Old Version)**

Term of Office. The President, Vice-President, Secretary and Treasurer shall hold office until the installation of new officers at the next annual meeting. The President-Elect Shall hold office for one year and the following year assume the office of President. One person cannot hold two offices simultaneously.

### **Section 4.2 (New Version)**

Term of Office. The President, Vice-President, Secretary and Treasurer shall hold office until the installation of new officers. The President-Elect Shall hold office for one year and the following year assume the office of President. The officers shall assume office on October 15th following their election. One person cannot hold two offices simultaneously.

If you have any questions, just call Dee Goodman, 303-345-6632 or Sally German-Rucker, 719-689-3063



# 12TH ANNUAL FAIRPLAY LLAMA PACK RACE

## Pro Division

<i>Runner and Nickname</i>	<i>Llama</i>	<i>Owner</i>
<b>Men</b>		
1st Mark Pommier- <i>Walk on the Wild Side</i>	Clancy	Bill Redwood
2nd Mike Dotseth- <i>Dewey</i>	Kip	High Line Llamas
3rd Tim Figge- <i>Fig</i>	Homer	High Line Llamas
<b>Women</b>		
1st Brita Kraabel- <i>Burrito</i>	Indy	CSU Vet School
2nd Diane Ridgway- <i>Daring Dee</i>	Heime	David Clark

## Amateur Division

### Men's Overall Winner

Scott Rojko-*Stevie Ray* Duncan Rocky Llama Outfitter

### Women's Overall Winner

Sandy Metzger-*Llama Mama* George Rill Redwood

1st Eric Benson-*E-Dang*  
 2nd Chris Sutter-*God*  
 3rd Ryan Fothergill-*T-Bone*

### Men 15-24

Walter Jack Lundt  
 John Jack Lundt  
 Mitchu Jack Lundt

### Men 25-34

1st Scott Rojko-*Stevie Ray* Duncan Rocky Llama Outfitter  
 2nd Jeff Johnson-*Jiffy* Jomo Shamba Sheep & Llamas  
 3rd Douglas Miller-*Llama Master* Luis Quintero Sally Rucker

### Men 35-44

1st Jack Lundt-*Hi Mountain Man* Bonanza Jack Lundt  
 2nd Art Unrein-*Team Art* Bill Redwood  
 3rd Bill Redwood-*Wild Bill* Cochica Bill Redwood

### Men 45-54

1st Stan Ebel-*Slug* Hershey Buckhorn Llamas, Inc.  
 2nd Ron Robinson-*Rocken Ron* Cumi Ron Robinson  
 3rd George Usinowicz-*Gorgeous George* Zulu Chief Terry Price

### Men 55+

1st LaRue Johnson-*Dangerous Lash LaRue* Mtoto Shamba Sheep & Llamas  
 2nd Jim Osmun M.J.-*Numeo* Fraser Jim Osmun

### Women 15-24

1st Laura Evans-*Lickety-Split Laura* Pair-A-Dice Boulder Ridge Ranch  
 2nd Jennifer MacDonald-*Old MacDonald* Toni Llama Granite Mountain Outfitters

### Women 25-34

1st Sandy Metzger-*Llama Mama* George Bill Redwood  
 2nd Kathy Gardiner-*Killer Kathy* Mandela Rob Ferris

### Women 35-44

1st Lisa Forthcrisy Christopher Peter Nichols  
 2nd Susan Glittenberg-*Glitz* Monty Granite Mountain Outfitters  
 3rd Jan Redwood-*Janitor* Alligence Bill Redwood

### Women 45-54

1st Ann Howard-*Nuckin*

### Women 55+

1st Jean Willard-*Ma* Sally Rucker

Continued on page 35

# 3RD ANNUAL FAIRPLAY KIDS LLAMA LUNACY

## 7 and under

- 1st Natalie Read (From Victory, England)  
 2nd Bobby Pockocke  
 3rd Erin Brenengen  
 4th Ira McMahan

## 8-11

- 1st Tori Everhart  
 2nd Shannon Smith  
 3rd Laura Coit  
 4th James Owen  
 5th David Hoover  
 6th LuLu MT. Loquidis

## 12-17

- 1st Samantha Mullins  
 2nd Hilary Price  
 3rd Cynthia Owen  
 4th Sara Anderson  
 5th Pamela Monteverde  
 6th Joshua Reed

### Other Participants in the Kid's Division

- |                   |                  |
|-------------------|------------------|
| Robbin Reed       | Mike Pockocke    |
| Valerie Quante    | Amber Kirby      |
| Melissa Kirby     | Jacob Kirby      |
| John Stout        | Tawnee M. Garcia |
| Emily A. Loquidis | Christina Owen   |
| Travis Roth       | Denise Unrein    |
| Kayln Carpenter   | Bonnie Whitmore  |
| Steven Read       | David Goodman    |
| Bon Benson        | Michael Jenks    |

## FAIRPLAY'S BIG THANK YOU LIST

- |                       |              |
|-----------------------|--------------|
| Brad Riley            | Les Logan    |
| Karla Goodman         | Rus Logan    |
| Michele Abbott        | Wes Logan    |
| Sally German-Rucker   | Judy Sealy   |
| Sharon Beacham        | Bill Adamcyk |
| Jim Osmun             | Jan Adamcyk  |
| Scott Everhart        | Ed Avery     |
| Vikki Everhart        | Bill Redwood |
| Dewain (Woody) Wood   | Jo Riley     |
| Carolyn Herriott-Wood | Lila West    |

## OTHER PARTICIPANTS IN THE AMATEUR DIVISION

- Frank Combes-*Patch*  
 Gail Marshall-*Whorebella*  
 Bob Riley-*The Colorado Trail Man*  
 Wes Logan-*Ace*  
 Jack White-*Butthead*  
 Terry Price-*Stud Muffin*  
 Brian Long-*Confused*  
 Shane Haynes-*Dazed*  
 Mary Jo Robinson-*Mrs. Robinson*  
 Jason Brenkert-*Nuke*  
 Roberta Kerns-*Bobin Along*  
 Chris Briggs-*Gropy*  
 Lisa Fotherby  
 Mark Stockton

## THE WALKING DIVISION

- Debbi Hopson-*Toothfairy*  
 Sherry Adamcyk-*Taz*  
 Jodey Anderson-*Jojo*  
 Sara Anderson-*Llunar Llama*  
 Roger Miller-*Mighting Miller*  
 Daryl Wood  
 Marissa Wood-*Lost & Found*  
 Jeff Jones-*Speedy*  
 Rick Taylor-*Sauntering Slick*  
 Charles Hopson-*Hate to be Late*  
 Pat Militzer-*Rollin Pat*  
 Marilyn Arnold-*Movin Marilyn*  
 John Stout-*Mad Medic*  
 Rus Logan-*Sian Rus*  
 Jerry Dunn-*Bear Track Devil*  
 Lloyd Wamsly-*Cool Guy*  
 Ben Riggs-*Nice Kid*  
 Sarah Lobser-*Cool Girl*  
 David Clark-*Mac*  
 Marcia McMahan-*Fish*  
 Hans W. Arnold-*Hi Flyer*  
 Fran Burke-*Sleezy*  
 Brian Smith-*Doc*  
 Roger Briggs-*Stinky*  
 Tom Land-*Rocky Mountain Tom*

## PARTICIPANTS IN THE PRO DIVISION

- Edward Avery-*Dough Boy*  
 Ken Chlouber-*I thought this was a Burro Race?*  
 Kenny Johnson-*Mr. Lightning*



# NEW MEMBERS

by Judy Sealy

**Kathie S. Weller**

805 Poplar Ave.  
Boulder, CO 80304  
303-449-6579

**Franklin D. Blazek**

**Dottie Blazek**  
21034 South River Road  
Joilet, IL 60436-7638  
815-725-3243

**Carol Schumaker**

8360 Freeman Drive  
Colorado Springs, CO 80908  
719-495-3413

**Rick Taylor**

580 Golden Bell Lane  
Divide, CO 80814-9798  
719-687-5797

**Kent Douglass**

DeCOLORES  
P. O. Box 430  
Windsor, CO 80550-0430  
303-686-0430

**Robert Mallonee**

WESTERN GEOPHYSICAL CO.  
10001 Richmond Avenue  
Houston, TX 77042-4299  
713-789-9600  
FAX 713-963-2646

**Julie & Steve Boomer**

P. O. Box 471  
Divide, CO 80814-0471  
719-687-7614

**Maryann P. Scott**

P. O. Box 703  
Kiowa, CO 80117  
303-621-2586

**Jacqueline Erickson**

P. O. Box 542  
Ojai, CA 93024  
805-640-8780

**Lisa E. Barlow, DVM**

1075 Hartford Dr.  
Boulder, CO 80303

303-494-6603

**Sara Anderson**

P. O. Box 244  
608 Scott Street  
Troy, ID 83871-0244  
*JUNIOR MEMBER*

**Bart Anderson**

TWIN PEAKS LLAMA FARM  
17253 CR 7  
Platteville, CO 80651  
303-535-4041

**Theresa Gallegos, DVM**

**Bert Edmonds**  
ELBERT COUNTY  
VETERINARY  
350 W. Kiowa Ave.  
P. O. Box 1448  
Elizabeth, CO 80107  
303-646-0450

**Robin Morin**

P. O. Box 1057  
Elgin, TX 78621



**Rocky Mountain Llamas**

Breeding - Training - Boarding - Equipment  
Bobra B. Goldsmith  
7202 N. 45th Street, Longmont, CO 80503  
(303) 530-5575

CHUCK & SHIRLEY HAST

**H**

**HAST**  
**LLAMAS**

HERD DISPERSAL  
4 FEMALES - 2 MALES

16330 6250 ROAD  
MONTROSE, CO.  
81401-7819  
303-249-4559

**Snow Cap Ranch**

Llamas & Emus too!

Bob & Linda Van Doozer  
(303) 241-1420

685 25 Road  
Grand Jct., CO 81505

**Stevens Llama Tique**

SINCE 1979  
Rt. 4, Box 39  
Worthington, MN 56187  
(507) 376-4230

Quality Breeding Males and Females Available  
Breeding Services • Live Birth Guarantee • New Specialty Llama Trailers

Visitors and Inquiries Welcome

FOR SALE:

- Corral Panels & Gates
- Kiwi Gate Latches
- Circulteer II Blowers and Booms
- Halters and Leads
- Grooming Equip.
- Driving Harnesses
- Nail & Wool Shears
- Packs
- Unique Hay Bags
- Vented Soft Rubber Stall/Trailer Mats
- Balance Beam Scales
- Fiber Optic Speculum
- Restraint/Grooming Chutes
- Wool • Sales • Leasing • Transportation

Loren and Judy Stevens  
★ Worthington

# Lumpy Ridge Llamas

## 1994 ANNUAL PRODUCTION SALE

An Incredible Variety of Ages, Wool Types, Bloodlines and Prices  
Select from Highest Quality Breeding Stock to Reasonably Priced Pets

- Females start at \$3,000 - choose from Wearlings, Yearlings and Bred Females
- Breeding Quality Males start at \$500

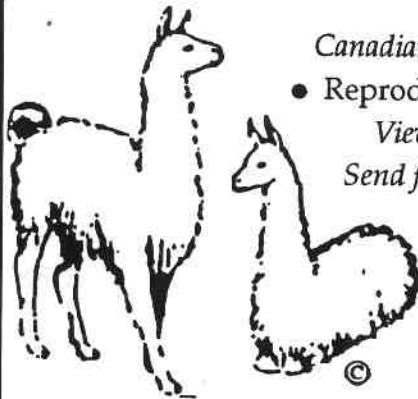
*Reference Sires include:*

*Canadian, Bolivian, Chilean and North American Stock*

- Reproductive Guarantees • Starter Herd Discount •

*Viewing and Selection has never been so easy!*

*Send for our Video & Color Reference Portfolio*



Ellen Sloan  
Llumpy Ridge Llamas  
P. O. Box 933  
Estes Park, Co 80517  
303-586-8252

Contact:  
-or-

Alaine Byers  
Peaks Promotions  
45640 Highway 72  
Ward, CO 80481  
303-459-3245

## WHAT'S THE VALUE OF ONE MEMBER?

**Ten** little members standing in a line  
**One** disliked the president, then there were nine.  
**Nine** little members offered to work late.  
One forgot her promise, then there were eight.  
**Eight** creative members had ideas good as heaven.  
One lost enthusiasm, there there were seven.  
**Seven** loyal members got into a fix.  
They quarreled over programs, then there were six.  
**Six** members remained with spirit and drive.  
One moved away, then there were five.  
**Five** steadfast members wished there were more.  
One became indifferent, then there were four.  
**Four** cheerful members who never disagree  
'til one complained of meetings, then there were three.  
**Three** eager members! What do they do?  
One got discouraged, then there were two.  
**Two** earnest members, each enrolled one more,  
Doubling their number, and then there were four.  
**Four** determined members just couldn't wait  
'til each won another, and then there were eight!  
**Eight** excited members signed up sixteen more.  
In another six verses, there'll be a thousand twenty-four!  
*Reprinted Southwest Regional Spinners Newsletter-March 1994*

COLORADO  
ALPACAS

Teri Phipps  
David Schieferstein

(303) 454-3142

35005 Weld County Road 41  
Eaton, Colorado 80615



# FOR SALE

**SERENITY LANE LLAMAS** is offering a nice selection of quality bloodline male and female llamas for sale at very reasonable prices. Whether you're a first time buyer or looking to upgrade your existing herd - we have animals for your needs. Stud quality males from Rasputin & Andean Spirit. Females bred to Rasputin as well as offspring from many excellent bloodlines. Lots of babies due Spring, Summer and Fall. We look forward to your visit. Call for additional information. Bill & Donna Brown, Woodland Park, CO 719-687-1224.

**TALL, STRONG AND BEAUTIFUL - PACK LLAMAS FOR SALE.** Males and females, reasonably priced and well trained. These llamas are ready - to carry your load on the trail or to breed and build your own herd. Table Mountain Farm, 4655 Eldridge Street, Golden, Colorado, 80403, 303-279-6687.

**STEVENS LLAMA TIQUE** is now offering several bred females and males of breeding, show and performance quality. Breeding service to several high-quality, out-cross males. Free brochure listing all the equipment we use in our llama business. Specialty llama trailers. Possible terms and transportation. Loren & Judy Stevens, Rt. 4, Box 39, Worthington, MN 56187, 507-376-4230.

**REDNAK LLAMAS HAS 2 YEARLING FEMALES READY TO BREED.** Excellent conformation, bone and presence. 2 Bred adult females, great moms, abundant milk and big babies (33-35 pounds). One 16-month Junior Herdsire available-Chilean & Bolivian lineage, sweetheart disposition. Call or come visit. Located in Coal Creek Canyon, Golden, Colorado. Call for photos and details. Jan Redenbarger, Box 7096, Golden, Colorado, 303-642-0140.

**COLOLAMA RANCH IS OFFERING EXCELLENT QUALITY** "coats of many colors" worn by both boys and girls of all ages. The models are top quality and registered. Whether you are a first time buyer or want to upgrade your collection, we have styles to fit your needs. Can be matched with other well known "labels." Boy's styles - \$600 and up. Girl's styles - \$3,500 and up. For more information, contact Lu Williams, 13546 Wamblee Trail, Conifer, Colorado 80433, 303-838-5389.

**BRED FEMALE, LARGE** - Short wool, black & brown, due March, 95. \$3,900. Lazy B Llamas, 303-688-9466.

**SNOW CAP RANCH HAS LLAMAS FOR SALE** 2 young females, good conformation & bone, starting at \$2,000. Several bred females from \$2,800 with breeding back to our Camacho Chief son or Gandy Dancer son. 4-year-old male with heavy bone and nice disposition. Some pack training. For information call 303-241-1420 CO.

**HAMMER CRIA DUE OCT. 28!** Fantastic opportunity to purchase Cinco de Mayo daughter bred to MC Hammer: Piedras Preciosas, DOB 7/92, rust/charcoal appy. Dense, fine wool. Additional bred females and Hammer crias available, starting at \$3,000. Stud Service, TTEAM training included with purchase. Transportation available. Call for information packet: 303-493-2335, Overland Trail Llamas, Livermore, CO. COME VISIT!

## HERDSIRES

**SINCE 1991, RASPUTIN HAS BEEN THE SENIOR HERDSIRE AT SERENITY LANE.** He's now second man to Neebish, our Crazy Mountain Man son, and needs to move on to more fertile pastures. Very heavy bone, abundant silky black wool, excellent disposition and proud carriage. Born May, 1989, has sired close to 40 offspring with 73% female. Affordably priced to upgrade your herd. Serious inquiries only, please. Bill & Donna Brown, 719-687-1224.

**SHADY B FARMS - BREEDING BOYS OF BOZEMAN** - "Stud Muffin" and "After Hours". Stud Muffin (Scarlett O' Llama x Macho Mann, 8/91) dense wool, height, size & bone. Happy owners report that "first babies are Muffin clones" - fee \$850. After Hours (Ebony x Federico, 9/92) large, flashy black with white tuxedo, silky fine wool - fee \$750. These two fine Gentlemen welcome your Lovely Ladies to a Liason in the beautiful Rocky Mountains. Discount for multiple breedings. Live birth guarantees. For added information, photos or videos, please contact Naomi & Jonathan Blacher, 5255 Jackson Creek Rd, Bozeman, MT 59715, 406-587-8077.

ALPACAS

LLAMAS

HANCE  
RANCHA

OWNERS

ROBERT & BARBARA HANCE  
11818 W. 52<sup>ND</sup> AVE.  
WHEAT RIDGE CO. 80033  
(303) 422-4681

MANAGER

MARY HANCE  
11855 W. 52<sup>ND</sup> AVE.  
WHEAT RIDGE CO. 80033  
(303) 467-3261



Serenity Lane  
LLAMAS & ALPACAS

Sales

Breeding

Boarding

Since 1984

Bill & Donna Brown 15293 W. Hwy. 24 Woodland Park, CO 80863

719-687-1224

# CLASSIFIED ADS

**POPULAR SOPRIS DESIGNS:** Packs, Halters, Hay Feed Bags, Wool Aprons, Quick Straps, Shawls - including our Cria Warming Shawl. Plus: The Great Divide Llama Chute, Books, Videos, Information Articles, Cards, Still-water Minerals, Grooming, Llama Care Products. Females and trained packers for sale. Free Catalog: Mt. Sopris Llamas Unltd., 303-963-3604.

**USEFUL LLAMA ITEMS:** featuring over 50 items particularly useful for llama farms: halters, scales, chutes, grooming supplies, shears (hand and electric), fly control, laboratory services, carts, weathervanes, blowers, clippers, harnesses, record forms, fencing, health items, etc. Free brochure - Useful Llama Items, 3540 76th Street, Caledonia, MI 49316, 800-63-llama (800-635-5262).

**LIMITED EDITION BRONZES** - We are cleaning house and have 2 outstanding limited edition Dale Woods bronzes for sale. One was designed especially for ILA and is a bust of a llama and Peruvian herdsman. The other is of two llamas and a herdsman. Both good size. Please call for photos. Naomi & Jonathan Blacher, 5255 Jackson Creek Rd, Bozeman, Mt 59715, 406-587-8077; Fax, 406-586-5687.

**QUALITY LLAMA PRODUCTS:** Free catalog of supplies for the alternate livestock industry. Halters, packs, show blankets, farm banners, grooming supplies, books and videos, gifts and much more. Free brochures on choosing a pack and on raising alternate livestock. Quality Llama Products, 6615 S. W. McVey, Redmond, OR 97756, 800-638-4689.

**TEACHING SPINNING LLAMA & ALPACA BY CHRIS SWITZER.** Saturday, October 22, 10:00 a.m. to 2:30 p.m.. Skyloom Fibers Shop. 1705 South Pearl, Denver, CO. Call 303-777-2331 to sign-up.

**ROLLING ROCK LLAMAS-PACK SYSTEMS.** Kit and ready-made internal frame packs starting at \$150. Lead ropes, cria coats, leather halters and more. Also llama boarding available in the foothills next to miles of Open Space trails. 4-1/2 acres of pasture, barn and shelter. Pat and John Militzer, 303-494-8219, 1190 Marshall Road, Boulder, CO 80303. Free catalog!

**LAMAHERD™ SOFTWARE** for efficient management of llamas/alpacas/donkeys/horses/goats/reindeer. Detailed animal, breeding, health, show, outings, owner, accounting information. Pedigree, progeny charts. Many reports: Herd Inventory, Breeding/Health Treatment Calendars, Accounting by animal/category, many more. \$200-\$450, Visa/MC Welcome. SWCS, 65711 Twin Bridges, Bend, OR 97701, 503-389-1913.

**TRAINING FOR YOU AND YOUR LLAMAS/ALPACAS** with TTEAM Techniques. Learn effective, no-forceful methods to teach your llamas: easy haltering; no stress grooming and shearing; leading; loading; picking up feet; packing; changing problem behaviors. Your place or ours, small groups or individual instruction. Also, TTEAM books, videos, equipment for sale. Write for price list or call: Dale Pettigrew, Overland Trail Llamas, 168 Emerald Mountain Court, Livermore, CO 80536 303-493-2335.

## SIZES AND PRICES FOR ADVERTISING

### DISPLAY ADS:

Full Page: 9-1/2" X 7" .....	\$65.00
Full Page Inside Cover .....	\$80.00
1/2 Page: 4-3/4" X 7" .....	\$40.00
1/2 Page: (Back cover with two color)	\$115.00
1/4 Page: 4-3/4" X 3-1/2" .....	\$20.00

10% Discount for 3 Consecutive Issues with Same Display Ad!

Business Card: 2" X 3-1/2" .....

All Display Ads must be camera-ready.

### CLASSIFIED ADS:

Member Classified (50 words): .....	\$5.00
(For more than 50 words-15¢ per word)	
Non-member Classified: .....	\$10.00
(For more than 50 words-15¢ per word)	

**All classified ads and articles must be typed double-spaced!**

**Deadline for next issue is October 1st**

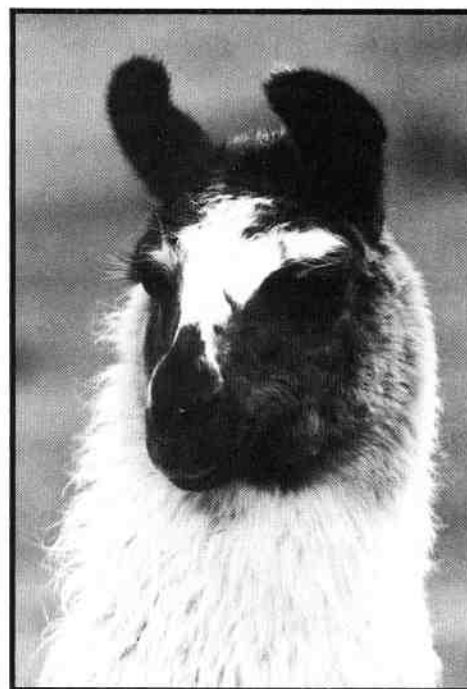
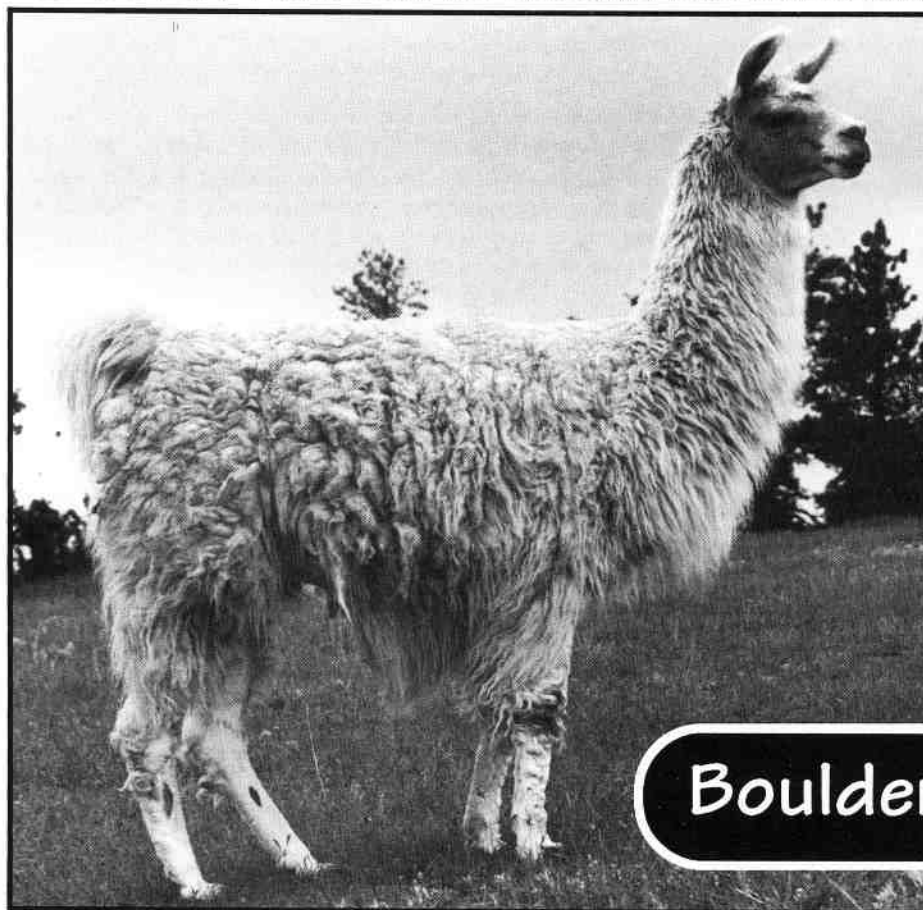
**Please mail all ads  
and typed articles to:**  
*(Please do not send a FAX.)*

**Jo Riley  
Post Office Box 1189  
1612 Spring Gulch Dr.  
Lyons, CO 80540  
303-823-5409**

*Send the ads in as early as possible! I place them in the Newsletter in the order that I receive them.*

*Please make checks payable to RMLA.*

# CHÉ: FULL CHILEAN OUTCROSS AVAILABLE TO BECOME YOUR HERDSIRE



**SAMSON**  
AN EXAMPLE OF THE  
QUALITY OFFSPRING OF CHÉ.

## Boulder Ridge Ranch

CHÉ WAS IN THE 1989 CHILEAN IMPORTATION. HE IS UNIQUELY CARMELLA COLORED. CHÉ HAS GIVEN US MANY QUALITY OFFSPRING TYPIFIED BY HIS SON, SAMSON.

FOR THE PRICE OF A COUPLE OF BREEDINGS, CHÉ CAN BE YOURS FOR ONLY \$4,900 WITH FULL RANCH GUARANTEE.

POST OFFICE BOX 1189 • LYONS, COLORADO 80540 • 800.255.0357

Home of

**PERUVIAN  
PICACHO**

CALL FOR DETAILS

### Rocky Mountain Llama and Alpaca Association

593 19-3/4 Road  
Grand Junction, Colorado 81503

*Address Correction Requested*



Bob & Barbara Hance  
HANCE RANCH  
11818 W. 52nd Ave  
Wheat Ridge, CO 80033-2032