

RMLA



MARCH, 1993

Barry _____
Bob _____
Maey _____
Ken _____

ROCKY MOUNTAIN LLAMA AND ALPACA ASSOCIATION



A visitor to the ranch checking out the llamas!

**The Estes Park Wool Market
Announces Changes For The Llama Show:
Light Wool will have its own class!**

Information on the Estes Park Wool Market Llama Show is on pages 21-24.



INDIAN PEAKS RANCH

Established in 1980

1993 Sale Selection

A rare opportunity to leap years ahead in your breeding program.

Females

Name	DOB	Sire	Dam	Breeding Status
Sweetgrass	1/13/87	Wind River Rocky Top	Dahlas Rhone	Bred to IP Yukon Due 6/93
IP Indian Summer	6/4/87	Peter Ustinov	IP Sierra Madre	Bred to IP Windfall Due 5/93
Shawnee	7/1/88	Aramis	Salt Water Taffy	Bred to IP Windfall Due 7/88
IP Sweet Essence	6/24/92	Camacho Chief	Sweetgrass	
IP Kachina	8/19/92	Camacho Chief	Shawnee	
IP Moondance	5/3/92	Yukon	Aspen	

Males

IP Cree	5/9/91	Camacho Chief	Indian Summer
IP Red Feather	9/3/91	Camacho Chief	IP Red Willow
IP Nevada	5/12/92	Camacho Chief	Indian Summer

Prices start at \$5,000 for females • \$2,500 for breeding quality males.
Reproductive guarantees • Females sold with complimentary rebreedings.

Call for video and color sale package.

Visitors Always Welcome

Alaine and Tim Redfern
45640 "Peak to Peak" Highway 72
Ward, Colorado 80481
303-459-3245



ROCKY MOUNTAIN LLAMA & ALPACA ASSOCIATION BOARD OF DIRECTORS

PRESIDENT

Dee Goodman
41930 County Road AA
Akron, CO 80720
303-345-2927

PRESIDENT-ELECT

Stan Lacher
Post Office Box 506
Elizabeth, CO 80107
303-646-0989

VICE PRESIDENT

John Fitzgerald
3567 L. 25 Drive
Hotchkiss, CO 81419
303-872-3440

TREASURER

Sharon Beacham
2380 North 95th Street
Boulder, CO 80301
303-666-9437

SECRETARY-MEMBERSHIP

Judy Sealy
593 19-3/4 Road
Grand Junction, CO 81503
303-241-7921

Other Important People You Might Need:

Newsletter Editor

Jo Stewart Riley
Post Office Box 1189
Lyons, Colorado 80540
303-823-5409

Newsletter Typist

Anne Kirby
1130 South Third Street
Montrose, CO 81401
303-249-5011

RMLA Library

Chris Switzer
Box 3800
Estes Park, CO 80517
303-586-4624

MEMBERSHIP INFORMATION

Membership year runs from January 1 through December 31

Adult Individual Membership: \$30.00 (One vote, newsletter, directory entry)

Farm or Ranch Membership: \$50.00 (Couple or two individuals associated with one business; two votes, newsletter, directory entry)

Junior Membership: \$10.00 (18 or under; no vote, receives newsletter and 75% reduction in conference/show fees, must have adult member sponsor.)

RMLA also provides an extensive lending library of books and videos to members.

For further information please contact Judy Sealy

Deadlines for 1993 and Some of 1994:

May Issue April 9th

November Issue October 8

July Issue June 11

January Issue December 10

September Issue August 13

March Issue February 11

The information contained in this Newsletter is not intended to be a substitute for qualified professional advice. Our readers are encouraged to consult with their own veterinarian, accountant, or attorney with any questions concerning their animals or business operations. RMLA is not responsible for any losses resulting from a reader's failure to heed this caution.

PRESIDENT'S MESSAGE

By Dee Goodman

Recently there has been quite a lot of discussion about the future of Lama Associations, mainly on the possible merging of associations. At the same time, it seems like there's a new lama association starting every week. It makes me think that we as a lama association aren't dealing with our member's needs. This thought has concerned me a great deal. But recently when one of our members suffered a major tragedy, it made me realize what RMLA means and that its members do care! I think about what Dan and Ellen Schreiner have done for this association. And now we as an association can possibly help them during their loss. A big THANK YOU to everyone that has helped! Plus, I look at the Wes Mauz Jr. Fund and Scott Welles Fund. In memory of two special members, we raise funds to help our future ... our youth! We all should be proud of RMLA and what you as members have done!

On the thought of the future of lama associations, I feel we as a North American lama association need to get back to where we started with good communication with other lama associations. On January 23rd and 24th this communication was started with 24 representatives from 24 associations (including RMLA, represented by Sally German, Stan Lacher and myself) meeting at the first Llama Assembly, hosted by the ILA in Denver. The first thought by most people in the first hour was, "What was ILA up to." But soon we realized we were there for one thing: the well being of llamas and their owners. Many ideas were discussed including llama health, government relations, importation, marketing, insurance, and youth. On llama health concerns, the

main topics were tuberculosis, brucellosis, and the testing concerns of both, plus meningeal worm and the research needed for all. The suggestion was to form a 5 member advisory Medical Research Group to recommend to the lama community research projects and help coordinate these projects. Judith Lawson has agreed to be on this committee. On government relations, the concern was the interstate transportation of lamas. Again there will be a 5 member lama working group to work on this. The history of importation was discussed with concern that not enough is being done on safe importation. Hopefully this will improve. Another thing discussed was the joint project with all lama associations to work on and publish ONE Youth Project Manual (4-H book) for all of North America. RMLA is heading up this project with the current RMLA book as the "core" of the project. Karla Goodman has agreed to head the project. (*But she probably won't talk to me for awhile!*) If you have questions about the Llama Assembly, please call me.

A big thank you to all of you who sent in the survey forms for the insurance, Education Seminar, and herdsire. On the seminar, make plans now to come to Northeast Colorado the end of September. Registration information will be in the May Newsletter. The town and county are excited about you coming and they are working to help keep cost low. The fairground usage will be free except the stalls and the RV parking. They're going to charge 50 cents a stall (this is a 100-stall new barn) plus \$5 a day for RV parking (includes electrical, water, and sewer). Lodging costs are around \$30 per couple, either motel or bed and breakfast. We also

PRESIDENT'S MESSAGE (Con't)

a three day kids camp plus classes planned (camp cooking, llama training, etc.). And for you women, a free trailer-backing class (no men allowed)! More on this in two months.

Along Other Lines

Another year at the National Western Stock Show has past. Even though there were some problems, I hope everyone who came enjoyed the show. I even managed not to lose a pack off of a llama during the pack string class. Of course, the course wasn't the same after I went through, so to speak. Thank you to everyone who helped with the show.

Nominations are now open for the RMLA offices of President-Elect, Vice President and Secretary. PLEASE send in your nomination(s) even if it is for yourself. And, if you are nominated, PLEASE RUN for office. Let's be truthful, it takes a lot of

work to be on the RMLA Board of Directors, but it is worth it! (most of the time!) The number of members volunteering this year has been great. RMLA is known for its volunteers, so let's keep it up! Run for office!

The Last Thought

During the Llama Assembly, there was a discussion on some of the possible research projects. One was a possible urine pregnancy test on llamas. Sounded like a good idea at the time. But later as I was thinking about this, my thought was, how do you get a llama to "pee" in a cup on demand? Think about it. Keep on smiling and humming down the llama trail.

Always,

Dee

THE BIG THANK YOU LIST

Dale Morris, Stan Lacher, Don Riley, and "John Deere": *Cleaning stalls, NWSS*

Shelia Woodley: *NWSS booth Coordinator*

Stan Lacher: *Trophies, NWSS*

Joan Price: *Corrals, NWSS booth*

Grace Shaddeau: *NWSS Superintendent*

Wes and Mary Mauz: *NWSS obstacle course*

Front Range Llama Breeders: *Sportsman Show*

Jim Osmun: *RV show booth Coordinator, NWSS booth setup*

Chris Switzer: *RMLA library*

Jo Riley: *Newsletter*

Mike Pettigrew: *Caring for Llamas Distributor*

Everyone *who manned the RMLA booth*

Barb Peterson: *South Dakota Stock Show booth*

Sally German: *Llama Assembly*

Erma Hast: *Service Directory*

Jerry Boudreaux: *RMLA Special Funds*

Committee Chairs and members

John Fitzgerald: *Herdsire*

Sharon Beacham: *Treasurer*

Judy Sealy: *Secretary, Membership, and keeping the President in line*

GOLD RUSH '93

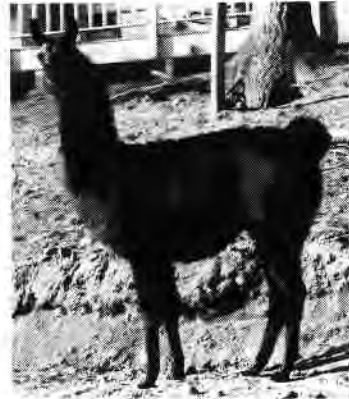
The Spring Classic Rocky Mountain Llama Sale
Utah State Fairpark · Salt Lake City, UT · April 23-24, 1993

** A QUALITY Llama Sale**

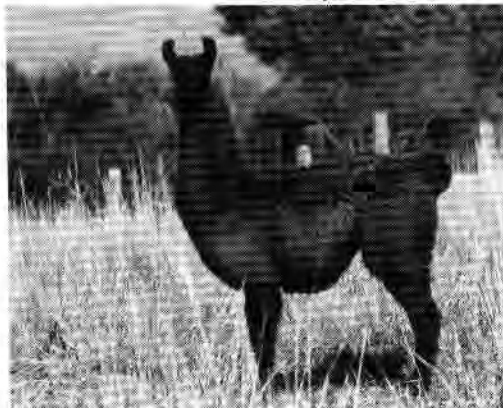
** Only Spring Sale West
Of The
Rockies! **



TJ'S MONEYMAKER
Female 6-27-92
Viscount X Pukka
Triple J Farms - Remond, WA



TJ'S APRIL SHADOW
Female 4-2-92
T.J.'s Moonshadow X Pumpernickel A188
Triple J Farms - Redmond, WA



SHARP'S ARICA
Female 5-10-92
3/4 Chilean
Julius Caesar X Chilean Jet Set
Sharp Llamas - Petaluma, CA



JLL JACK BERRY
Male 6-24-87
Apple Jack X Doo Berry
Juniper Lane Llamas - Redmond, OR



LIVING ART, INC.
Frank and Eleanor Palmisano
2309 J Road - Grand Junction, CO 81505
Toll Free 1-800-484-9756 (code 8759)
FAX 303-242-8759



GOLD RUSH '93

The Spring Classic Rocky Mountain Llama Sale
Utah State Fairpark · Salt Lake City, UT · April 23-24, 1993



BUFFERINA
Bred female 11-11-78
Great Gildersleeve X Buffy PL
Triple J Farms - Redmond, WA



SHARP'S BRILLA
Female 5-23-92
Julius Caesar X Lady Alana
1/2 Chilean
Sharp Llamas - Petaluma, CA



MIDNIGHT OIL
Male 10-15-91
Huckleberry Finn X Petula Clark
Big Trees Llama Farm - Valley Ford, CA



FLYIN' BC CHOCOLATE MYERS
Male 7-16-92
LW The Ambassador X Flyin' BC Dazy
The Flyin' BC Ranch - Alpine, WY



LIVING ART, INC.
Frank and Eleanor Palmisano
2309 J Road - Grand Junction, CO 81505
Toll Free 1-800-484-9756 (code 8759)
FAX 303-242-8759



CALENDAR OF EVENTS

March 20-21: Maricopa County Fair, Phoenix, AZ

Second Annual Llama Show. For information, call Diane Walker, 602-252-0717.

April 23-24: Gold Rush Spring Llama Sale, Salt Lake City, UT

This will be held at the Utah State Fairpark Coliseum. For more information, call Frank or Eleanor Palmisano, 303-242-8759. See ad on pages 6 and 7.

May 28-31: Advanced Team Clinic, Livermore, Colorado

Beginning and advanced work with Marty McGee. For information, contact Dale Pettigrew, Overland Trail Llamas, 303-493-2335.

May 28-30: Intermountain Llama Classic, Logan, Utah

Fun, friendly competition, private treaty sale. Sponsored by the Utah Llama Association. For information, contact Steve or Linda Kyriopoulos, 801-245-3529.

May 29-30: Llama and Alpaca Bazaar, Stamford, VT

Participation is the rule of the day. Call for details, 802-694-1417.

June 3-6: Llama Pack Festival

A fun-filled weekend getting to know what your llamas can do for you. For beginners and seasoned packers. See article on page 18.

June 10-13: Estes Park Wool Market, Estes Park, Colorado

Llama Halter and Performance Classes on June 12 and 13. Other events include Spinning/Weaving Workshops, Contests, and Vendors. Articles on pages 21 to 24.

June 10-14: Alpaca Owners and Breeders Assoc., Estes Park, CO

Biggest Alpaca Sale and Show of '93. "The Sky's the Limit" See article on page 32.

June 19: RMLA Business Meeting, 7:00 a.m. to 8:30 a.m.

At the ILA conference in Snowmass, CO. Come for Breakfast.

June 26: 3rd Annual Red Light Run, Cripple Creek, CO

A 3-mile Pack Llama Race through historic Cripple Creek plus a parade and youth/adult obstacle course. Contact Sally German, 719-689-3063.

July 1-3: Firecracker West Coast Llama Sale, Salem, OR

Futurity Show and Sale July 1, Open Show & Sale July 2 & 3. For information, call Dick or Pat Wickum, 800-876-8816. See ad on page 32.

July 6 - September 7: 1993 Colorado Trail

Cindy Ross and Todd Gladfelter hike on the Trail. To help, call Dee Goodman.

July 24-25: Fairplay Pack Llama Race, Fairplay, Colorado

A 3-mile cross-country Llama Pack Race around Fairplay. More in next Newsletter.

August 6-9: Llamafest at Fiberfest, Kalamazoo, Michigan

3rd Fest includes forums, demos, show and sale. Call Leah Bird, 616-657-6379.

September 16-18: Gold Rush '93, Brighton, CO

Alpaca Sale on September 17 and Llama Sale on September 18. For more information, call Frank or Eleanor Palmisano, 303-242-8759.

September 24-26: RMLA Educational Seminar, Akron, CO

A 3-day Hands-On-Seminar covering everything you need to know. More later!

PRESIDENT-ELECT'S MESSAGE

Dear Friends,

Gail and I joined RMLA before the Estes Park conference, got our membership directory and went visiting llama ranches. It was at least two years before we got our first llamas. We have now grown to four females and three males.

We owe a large debt of gratitude to all of you for what we have learned about raising llamas since then. The strength of this organization has always been its members; our collective intelligence and the way we want the best for our animals.

Elections for new officers are just around the corner, volunteers are needed to take an active role in shaping the future of RMLA.

For those of you who don't know, I got this position because no one else wanted the job. I turned it down twice because I felt there are other members who were better qualified and have more time to devote to RMLA. I reconsidered only after no one else chose to run. This must change.

At our last Board meeting, we discussed the possible necessity of having to hire a general manager. Although there are merits to this idea, I would prefer to revitalize our

organization; to encourage members to take a more active role, to gain more widespread participation in accomplishing the tasks of the future.

I have been told that a lack of volunteers and eventual burnout of the few who do volunteer is typical of associations like ours. I am open to suggestions as to ways to change this.

In the meantime, please consider running for office or nominating qualified and interested people to serve.

For those of you that know me, I have a lot of enthusiasm but I will need organized persons to serve on the board with me, to help focus that energy into something positive.

Speaking of the positive, I would like to thank Dale Morris & Dee Goodman for their help in getting the stalls cleaned prior to the arrival of the llamas at this year's National Western Stock Show. A veritable mountain of dung was removed. Thank you.

Stanton

Editor's Note: Photo on the Cover

My dear husband, Bob, has always felt that the Newsletter needs photos to make it more interesting. As usual, there is rarely any left-over room. This issue is 44 pages long without the Morris Report, which will have to wait to the May issue, and is too long for photos. Hence, I put a photo on the cover! If you would like one of your photos on the cover, please send me a good quality print and we will choose one each month. To be truthful, your chances of being chosen will improve if you have submitted your Vet for the Network. The one qualification is that the photo can not have any commercial content!

The final choice is the Editor's!

MORRIS LLAMAS

Dale and Vicki Morris
P.O. Box 848 • Florissant, CO 80816
(719) 748-3590

Banana Belt Ranch



Quality Begets Quality

Quality llamas for sale - Stud Service.
Domestic & Imported Bloodlines.
All our llamas are registered,
4-way tested, TTEAM trained
and guaranteed.
Reasonable prices & delivery.
Visitors Welcome.



COLD WEATHER NUTRITION FOR CAMELIDS

Dr. LaRue Johnson, Colorado State University

Since we are now optimistically facing spring here in the Rockies, we would like to think the cold weather is over. But, tradition would tend to suggest otherwise. Is there a need to give nutritional consideration of cold weather for our furry friends? Perhaps the first thing to define is cold weather. As our always reliable weatherpersons point out, the temperature often plunges below freezing which, just by the term, suggests cold to us two-leggeds. However, what is cold to us may well be only a stimulus to our buddies to feel frisky and llama dance more than just in the twilight. I'm not sure we can put an absolute formula definition on cold weather, however factors that must be considered are of course the thermometer reading, the wind chill, dampness or relative humidity, body condition, wool covering, shelter, bedding, and nutrition quantity as well as quality.

In reality, any time the mercury dips below 40°F, the other factors may begin to have an influence on determining the effect, with obviously greater potential influence as it gets progressively lower. High relative humidity as well as either rain or snow provides greater thermal penetration. Combining the reduced environmental temperature with the influence of Wyoming winds may well send the wind chill factor to produce a considerable thermal effect. That effect may well be nicely tolerated however if the combination of resistance factors are adequate to the challenge. What allows the various sea mammals (notably polar bears, whales, and the various cetaceans) to endure swimming in icy waters that could quickly be the demise of most other mammals? The answer lies in a considerable layer of body covering fat, as well as in some, a furry coat with variable thickness as well

as unique thermal protecting properties. The same fat llama that was predisposed to heat stress back in July-September is now better able to tolerate the other extreme, whereas a truly thin Llama (rare breed), will likely need some cold weather consideration.

Camelids that have been extensively groomed or shorn in the previous summer will also have lost some of their natural thermal protection. Also, naturally short woolled animals will need some consideration over heavily woolled ones. Environmental options available to your animals may well circumvent the need for additional nutritional considerations in spite of being properly body conditioned and short woolled. Wind breaks with deep bedding should be the minimum available; ideally, a roof is provided in addition. NOTE: If you have a herd of Llamas, and plan to construct a protective shed/barn, be sure to provide the opening to the south/southeast and consider that approximately one-third of the floor space will be occupied by an all too predictable dunging area.

Upon close inspection of your llama's wool coat, you will observe that all body parts are not covered equally. The same thermal window that allowed for heat loss in the summertime is now unprotected from the cold while the animal is standing. Consequently, if dry, deep bedding is made available the thermal window of the abdomen is protected and the tail (if wooly) will fully cover the genital region. Feeding your llamas on the ground during extremely cold weather allows them to lie down on uneaten hay (protecting the thermal window), although this admittedly compromises our usual recommendations for prevention of parasitism.

COLD WEATHER NUTRITION FOR CAMELIDS (con't)

Having considered the foregoing counter measures to cold effects on our llamas, most will actually need no additional nutritional considerations. However, if residual concerns persist, some nutritional alterations may be implemented. We can in some cases increase the total intake of forage. However, if animals have already essentially been offered free choice forage, they will not increase their intake just because we offer them more. Research has shown that they will not consume more than 1.8-2.0% of their body weight (BW) in dry matter (DM), no matter how much or of what quality they are offered. As such, only if they have been limit fed prior to the onset of cold weather will the offering of more of the same feed be of benefit. Therefore, the only other option is to increase the caloric density of the total DM consumed. This effort in itself is a paradoxical compromise in that by substituting for some of the forage in the diet, with a more calorically dense and generally more readily digested food, a reduction of heat increment occurs. What, pray tell, is *heat increment*? Essentially it is wasted calories that do not get truly into the body's metabolism, but instead cause internal heat to be generated in the course of being digested. For our cold weather situation under consideration, a feed with high heat increment is of course desirable, whereas during hot weather quite the opposite is concluded. Forages (hay and pasture) have high heat increment, whereas concentrates (grains and many pelleted supplements) have a lower heat increment. Consequently, in replacing part of the diet with grain, we are increasing the digestible nutrients available for body metabolism, but in the process not generating as much heat. One can conclude however that a proper balance of forage to grain supplement will be maintained as

long as the grain doesn't exceed 20% of the total DM intake. Example: 300 pound llama eating 2% of BW in DM = 6 lbs x 20% = 1.2 lbs of grain and 4.8 lbs of forage. Now, have I just said that all 300 pound llamas should receive 1.2 pounds of grain/day? NO! Only if they are thin, short woolled, and not provided adequate shelter in cold weather. In addition, independent of the previous conditions, consideration to offer grain is influenced by late pregnancy, heavy lactation, heavy exercise (the pacing stud), and young animals in growth spurts.

What concentrate/grain should we feed? While the options are many, constraints of price and availability compromise many. As such, the KISS* principle should prevail. Yellow corn either whole, flaked, or cracked is my choice in that it is readily available, reasonably priced, readily consumed, and is calorically dense. Combinations of grains (e.g. COB--corn/oats/barley with sprinkling of molasses) do offer a desirable higher fiber intake but are more expensive.

In summary, there are circumstances where nutritional changes can be used to advantage to counter the effects of cold weather. However, before nutritional measures are implemented I would encourage you to assess body condition, wool covering and unique nutritional demands. Remember, just because some of your animals may need more groceries doesn't mean the whole herd does--even in cold weather! NOTE: If this article prompts you to ask some questions, please submit them to the RMLA Newsletter and they will be addressed in the next issue.

* Keep It Simple Stupid

Editor's Note: This article cannot be reproduced without the written permission of Dr. LaRue Johnson.

AGRICULTURAL LAND CLASSIFICATION

by Mary Ewing, Esq. of Bucholtz, Bull & Ewing

Colorado gives special tax consideration in levying property taxes to land that is classified as *agricultural land*. Land may be zoned agricultural but classified residential or vacant land.

When property is classified as agricultural land, the land is valued solely by consideration of its *earning or productive capacity* in agricultural use and is generally assigned very low actual values as a result. To qualify as *agricultural land*, the strict technical requirements of the property tax statute must be met. If the land does qualify, this will likely result in a substantial savings in tax dollars paid for property taxes.

DEFINITION OF AGRICULTURAL LAND

To be classified as *agricultural land*, the following requirements must be met:

1. For the 2 years preceding the assessment date, the land must either be:

a. used to produce agricultural products that originate from the land's productivity for the primary purpose of obtaining a monetary profit; or

b. in the process of being restored through conservation practices.

2. During the current year the land must either be:

a. used to produce agricultural products that originate from the land's productivity for the primary purpose of obtaining a monetary profit, or

b. in the process of being restored through conservation practices.

3. During the 10 years preceding the assessment date, the land must either have been:

a. classified as "agricultural land"
or

b. eligible for classification as "agricultural land" consistent with the foregoing requirements.

4. The land must "continue to have actual agricultural use."

In contrast, vacant land is treated as any other type of real property not accorded special tax consideration.

CATEGORIES OF AGRICULTURAL LAND

FARM

The law defines a *farm* as a parcel of land which is used to produce agricultural products that originate from the land's productivity for the primary purpose of obtaining a monetary profit or be in the process of being restored through conservation practices.

The statute does not define what is an agricultural product. It does, however, define *agricultural and livestock products* as plant or animal products in a raw or unprocessed state which are derived from the science and art of agriculture. The statute defines *agriculture* as farming, ranching, animal husbandry, and horticulture.

RANCH

The law defines a *ranch* as a parcel of land that is used for grazing livestock for profit. It defines *livestock* as all animals.

Some trial courts have stated that to be considered grazing land, the land itself must be the primary source of productivity. In other words, the land itself must be able to produce enough forage to support an animal unit or units. However, no appellate court has interpreted this statute in a manner such that to be considered grazing land, the land must be the main source of forage. (A trial court is not bound to follow the holdings of other trial courts,

AGRICULTURAL LAND CLASSIFICATION (con't)

but a trial court is required to follow the holdings of appellate courts).

FOREST LAND

The law defines *forest land* as a parcel of land consisting of at least forty acres of which at least ten percent is stocked by forest trees of any size, and includes land that formerly had such tree cover and will be naturally or artificially regenerated. To qualify as forest land, the land must be used to produce tangible wood products that originate from the productivity of the land, for the primary purpose of obtaining a monetary profit, and is subject to a forest management plan.

MONETARY PROFIT

The statutory definitions of *farms* and *ranches* require that the qualifying activity be engaged in for monetary profit. The statute fails to define when an activity is engaged in for profit. Presumably, a fact finder would look at the same objective facts as set forth by the IRS as determinative,

- The manner in which the taxpayer carries on the activity.
- The expertise of the taxpayer or his advisors.
- The time and effort expended by the taxpayer in carrying on the activity.
- The expectation that the assets used in the activity may appreciate in value.
- The success of the taxpayer in carrying on other similar or dissimilar activity.
- The taxpayer's history of income or losses with respect to the activity.
- The amount of occasional profits, if any, which are earned.
- The financial status of the taxpayer.
- The elements of personal pleasure of recreation.

However, while the above are factors

which the IRS uses to determine whether the activity is one conducted for a monetary profit, in evaluating the appropriateness of a particular property's classification, Colorado courts have found the following to be irrelevant:

- The fact that the value of the land far exceeds the value at which farming could be considered to produce a reasonable return of investment.
- The fact that only a minimal profit is earned from the agricultural endeavor.
- Whether the land is located in an incorporated or unincorporated area.
- The use for which the land is zoned.
- The fact that the residential improvement on the land bears no relationship to the agricultural use.
- The intent of the owner of the land to make a profit when the land has been leased out. (The statute only focuses on the intent of the user. Thus, if the land is leased to another person or entity, that person's or entity's intent to produce a monetary profit will be determinative, not the owner's).

HOW DO I KNOW HOW MY PROPERTY IS CLASSIFIED AND HOW DO I GO ABOUT CHANGING THE CLASSIFICATION?

Colorado law requires property to be reassessed for property taxes annually. Each property owner receives a document entitled "Notice of Valuation" from the county assessor's office in the county where the property is located. The document will reflect the classification of the property and will provide the deadline for lodging a protest of the classification. In order to preserve the right to protest the classification, that deadline must be met.

The protest should be accompanied by documents reflecting the basis for the

(This article is continued on page 42)

FRONT RANGE LLAMA BREEDERS

O F C O L O R A D O

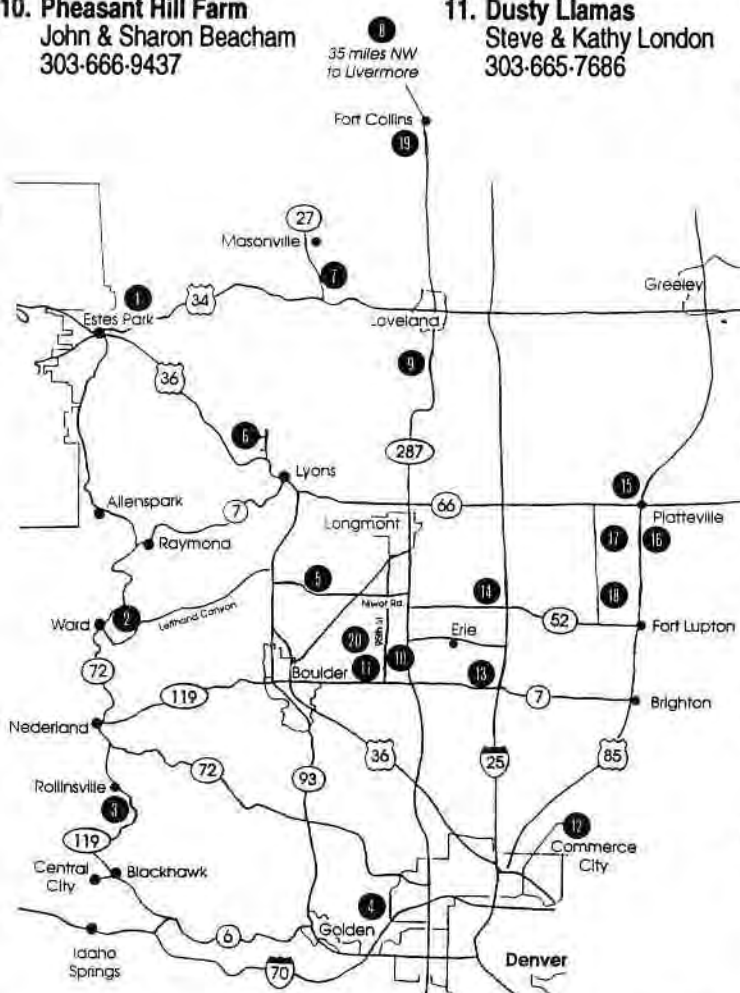
You are invited to participate in the Estes Park Wool Market Llama Show on June 10-13, the weekend prior to the ILA Conference in Snowmass on June 17-20. A Private Treaty Sale sponsored by FRLB will be held featuring select breeding stock, trained packers and lovable pets. The public is invited to a Hands-On Preview of all sale animals.

1. **Lumpy Ridge Llamas**
Ellen Sloan
303-586-2684
2. **Indian Peaks Ranch**
Alaine & Tim Redfern
303-459-3245
3. **Garden Gate Llamas**
Warren & Lorie Garthwaite
303-258-7517
4. **Bear Track Farm**
Jerry Dunn
303-277-1129
5. **Rocky Mountain Llamas**
Bobra Goldsmith
303-530-5575
6. **Boulder Ridge Ranch**
Bob & Jo Riley
800-255-0357
7. **Great Divide Llamas**
Stan & Dianne Ebel
303-667-7411
8. **Overland Trail Llamas**
Mike & Dale Pettigrew
303-493-2335
9. **Sunset Ridge Farm**
Dorene Leonard
303-667-2356

10. **Pheasant Hill Farm**
John & Sharon Beacham
303-666-9437

11. **Dusty Llamas**
Steve & Kathy London
303-665-7686

12. **Llama Lee Acres**
Gerry Lee
303-659-7662
13. **West View Llamas**
Lila West
303-665-3172
14. **P & R Llamas**
Paul & Rose Hansen
303-449-4159
15. **Harding Llama Ranch**
Cliff Harding
303-785-6065
16. **Hillcrest Llama Ranch**
Rose Mary Zeschin
303-785-2398
17. **Llamarage**
Joe & Mary Beth Hartsough
303-785-2463
18. **Shadetree Ranch**
Jack & Betty Goetzinger
303-833-4867
19. **Castle Llamas**
Monte & Carol Ballew
303-484-3537
20. **L'Ecole Llamas**
Dan Gould & Kay Meyer
303-665-5273



For FRLB Ranch Tour Map and boarding facilities available call or write:
Front Range Llama Breeders • Post Office Box 1189 • Lyons, CO 80540 • 303-823-5409

MODEL FOR "LLAMA-TIZE, NOT TRAUMATIZE YOUR HORSE" PRESENTATION

The ILA packing Committee has developed guidelines that may be used to sponsor an educational presentation.

Purpose: The purpose of this presentation is to provide an opportunity to work with riders and packers of horses and mules to promote safe and friendly back country encounters.

Horses that have never seen a llama may initially react from a place of fear. Given a chance to become familiar with a

llama's appearance and smell, this fear is commonly eliminated. Many horse and mule owners have never had a chance to meet a llama "up close and personal" and this meeting can provide a forum for understanding, education and cooperation between the two user groups.

Guidelines:

1. Get together with other llama owners to plan and put on the event.
2. Locate a site for the event. Choose a neutral, secure area such as a fairgrounds or arena. Do not have the event at a llama owner's ranch. Make sure there is easy access and plenty of space for horse trailers and enough room for the animals to keep a safe distance initially. Investigate the availability or need to purchase limited liability insurance for the event.
3. Identify and contact the horse group(s) in your area and extend an invitation. Work out a time and get an idea of how many people will participate. Remember that many trail riders may not belong to an organized group. Look at the possibility of advertising the event and opening it up to the general horse public.
4. Select llamas that are used to horses and to the type of environment where the event will take place. Have at least two llamas and watch to be sure they're not getting overwhelmed by the experience. A nervous llama will not help you accomplish your goals.
5. Plan a short presentation on llamas and why they make good pack animals. Include basic information on where they come from, their vital statistics, their other uses, and then state why you like packing with them. Avoid comparisons and overstating their virtues. Be respectful of other people's choices and experiences. Don't get trapped into arguing the merits of one animal over the other. A good analogy is different sized pickups for different types of work. Allow time for questions.
6. Have handouts available: the ILA one page "Pack Llamas" flyer is easily duplicated and will provide some basic information for the participants to take home.
7. Have sponsors gather some wool from their llamas and put an ounce or so into a ziploc bag. Make these bags available for horse owners to take home and use to "de-scent-sitize" their animals.
8. Have refreshments available. Creating a friendly atmosphere with time to get to know people will go a long way to promote goodwill.

(This article is continued on page 42)

LANA EXPANDS YOUTH PROGRAM

By Betty Barkman

- (1) In a joint project with RMLA and ILA, LANA is participating in the development of a Llama handbook that will be acceptable to the National 4-H for use by any 4-H member interested in working with Llamas. According to Dan Milton, LANA's President, "All of us at LANA appreciate this opportunity to work together with ILA and RMLA on a problem of national scope. To be able to speak with one voice on problems that impact the entire llama community is a very positive move. Hopefully, this effort will show how we can work together on other problems that affect all of us."
- (2) The LANA youth membership has decided to take charge of their own agenda at the LANA EXPO '93, to be held on July 22-25 in Grass Valley, California. They are hot on the trail of putting on our most dynamic youth program yet. Rumor has it that the adults were envious of some of the youth programs going on at last year's

EXPO, and this year's promises to be even more exciting. The LANA Board applauds the youth for taking the responsibility to direct their portion of the EXPO.

- (3) LANA is looking for youth writers or would-be writers for the new LANA News Youth Column. Anyone under 18 may submit articles to Betty Barkman at 34190 Lodge Road, Tollhouse, CA 93667. Articles should be about your involvement with llamas. The writers of any articles that are published in the LANA News will receive a free youth membership in LANA. The youth in LANA want to hear from other youth and what they are doing.

LANA, founded in 1981, is a North American association with a strong focus on youth education and involvement.

LANA has also negotiated Group Discounts with providers of goods and services. For membership information, contact Virginia Christensen, 702-265-3177.



Switzer Land
ALPACAS
and
LLAMAS

Phil & Chris Switzer
(303) 586-4624

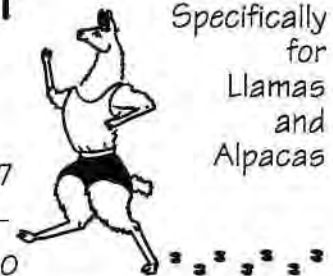
P.O. Box 3800
Estes Park, CO 80517

Stillwater
Minerals
Since 1989

Bob & Jo Riley

Phone: 800-255-0357
FAX: 800-648-2383

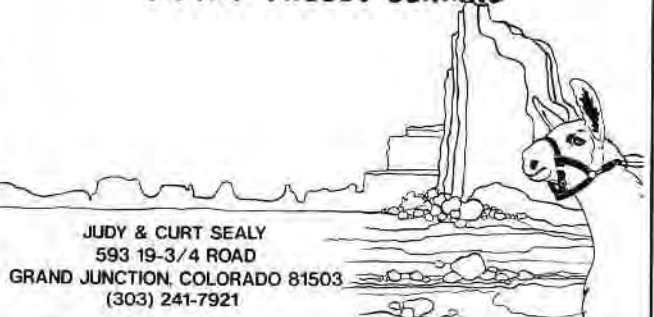
Post Office Box 1189
Lyons, Colorado 80540



Rocky Mountain Llamas



GRAND VALLEY LLAMAS



Add a ★STAR★ to Your Program with **MC Hammer**



LW The Ambassador x T. Y. Button

★ **Eight-time Grand Champion**
including 1993 National Western Stock Show

- ★ Stud Service \$1000
- Live Birth Guarantee, Multi-breeding Discount
- ★ Bred Females & Crias Available



EASTWARD
L•L•A•M•A•S
INN EDEN

Gale & Marge Armstrong
5643 E. 2300 N.
Eden, Utah 84310-0013
801/745-2297

Overland Trail
llamas

Mike & Dale Pettigrew
168 Emerald Mountain Court
Livermore, CO 80536 • 303/493-2335
35 miles NW of Fort Collins

LLAMA PACK FESTIVAL

The Festival will be held June 3-6 this year. Yes, it's that time of the year again; start getting those llamas in shape. The Festival will be held in the White River National Forest, near Sunlight Ski Area. We will meet in Glenwood Springs on Thursday, June 3, and proceed to the trail-head from there. The fun begins with a group hike into camp. The trail will be well-marked for anyone arriving late.

The weekend will be filled with games for young and old, as well as plenty of time for relaxing and enjoying the beautiful surroundings. The highlight of the Festival is the camp cook contest. Everyone has a chance to share their favorite camp treats.

The Festival is for RMLA members only, and will be limited to 50 people and their

llamas. Registration deadline is May 1. To receive a registration form, call or write Jack White, 303-879-1358, 22900 CR 56, Steamboat Springs, CO 80487.

LETTER TO THE EDITOR;

This is a brief note of thanks to the members of The Rocky Mountain Llama Association who were involved in the cleaning of the stalls at the National Western Stock Show. It was wonderful to come into the barn to set up and not have to look forward to cleaning the stalls. I know that it was a lot of work for a few, but I want those involved to know it was very much appreciated. Thank you all !!! Steve & Sandi Gilland of MYSTICAL CRITTERS, Casper, Wyoming.

ROCKY MOUNTAIN LLAMA & ALPACA ASSOCIATION

General Fund Activity 1-1-93 to 2-10-93

Beginning balance 1/1/93		\$1,370.28
Income:		
60% of membership renewals	4,044.00	
(Approx. 69% of '92 membership)		
60% of interest income	23.85	
Directory listings	80.00	
Law signs	47.08	
Newsletter ads	20.00	
Miscellaneous	1.31	
Total income:		\$4,216.24
Expense:		
Bank fees	12.80	
Board of Directors (mileage, January meeting)	82.50	
Insurance (annual premium)	1,000.00	
Law signs ('92 Colorado sales tax)	12.42	
Newsletter (January printing)	642.30	
Office (Xerox & supplies)	158.33	
Phone	57.82	
Postage (newsletter, stamped post card, two 1st. class mailings to membership)	490.27	
Total expense:		(\$2,456.44)
Balance 2-10-93		<u>\$3,130.08</u>

If you have questions about any RMLA fund,
please call the Treasurer, Sharon Beacham, 303-666-9437

THE MARK OF A GREAT CHAMPION IS CONSISTENT REPEAT PERFORMANCE

ANDEAN SPIRIT

ILR - Lacamas Andean Spirit # 59544 DOB. 5-7-88 Blood Type # LL490-2

Are you aware of any other herd sire who has these credentials:

CHARACTERISTICS

BEAUTIFULLY BALANCED AND CONFORMED
LARGE BONED - 389 LBS.
EXQUISITE FLEECE AVG. 24.6 MICRONS
TO DATE 58% FEMALE PRODUCTION
GENTLE PERSONALITY- PROUD BEARING

ALL SHOW GRAND CHAMPION

DENVER NATIONAL WESTERN 1990
OHIO STATE FAIR 1990
GEORGIA NATIONAL 1991

GRAND CHAMPION LONG WOOL DIVISION

DENVER NATIONAL WESTERN 1990
OHIO STATE FAIR 1990
NEW MEXICO STATE FAIR 1990
DENVER NATIONAL WESTERN 1991
FORT WORTH EXPOSITION 1991
HOUSTON STOCK SHOW 1991
ESTES PARK WOOL MARKET 1991
GEORGIA NATIONAL 1991

GRAND CHAMPION GET OF SIRE

FORT WORTH EXPOSITION 1992
DENVER NATIONAL WESTERN 1993
FORT WORTH EXPOSITION 1993

The progeny of ANDEAN SPIRIT have won the following:

THREE GRAND CHAMPION GET OF SIRE
TWO GRAND CHAMPIONS
THREE RESERVE GRAND CHAMPIONS
NINE FIRST PLACE CLASS WINNERS
THREE SECOND PLACE CLASS WINNERS

All of the above has been accomplished as of 2-5-93 in Major ALSA Sponsored Shows with more than 75 llamas competing.

Call NOW and reserve your 1993 ANDEAN SPIRIT breeding for only \$1500.

***ANDY Travels - Live Birth Guarantee - Multiple Breeding Discount
\$250 non-refundable down - remainder when female proven pregnant.***

KAHURA UYU LLAMAS, Howard Kerstetter, 2050 Ward Road, Bozeman, Montana, 59715 (406) 586-3191.

MARKETING

By Linda Kyriopoulos

As of December 1, 1992, RMLA finally has a marketing committee! Our hopes are to be able to keep abreast of events which would be advantageous to participate in with our llamas, from a marketing standpoint as well as for fun! We are looking into new marketing and advertising avenues, and we hope to provide RMLA members with creative ideas for marketing their own animals, and the llama industry as a whole.

Several key events have already come and gone this year. If you didn't participate this year, plan for next year! Sheila Woodley coordinated the RMLA booth at the National Western Stock Show in Denver in January. Barbara Peterson had the RMLA booth at the South Dakota Stock Show in February. These types of events are great promotional opportunities for our llamas. Get involved with these local and regional events, they can be demanding but yet extremely rewarding. Local parades are another great way to get our llamas in the limelight. Be prepared to "hang around" and "talk llamas." Some upcoming events that the

RMLA committee members are aware of are:

National Western Conference Boat & Travel Show in Denver, March 3-7. If interested contact, Jim Osmun, 303-457-2787.

St. Patrick's Day Parade in Denver: Eleanor Palmisano has gathered all the info. Dee Goodman has organized the parade with the Front Range Llama Breeders attending. If you miss it this year, set your sights on next year as this is one of the biggest parades in the country. Call Eleanor at 303-242-8759 for more information.

Cheyenne Frontier Days in Cheyenne July 23-August 1, contact Carreen Kresal for information, 307-265-5909.

Of course, there are a lot of llama events coming up which do draw the general public, and its always fun to get together with other llama owners. Please feel free to contact me or another member of the committee if you are aware of other opportunities.

Linda Kyriopoulos (chairman)	801-245-3529
Frank & Eleanor Palmisano	303-242-8759
Carreen Kresal.....	307-265-5909
Sheila Woodley	303-276-3440
Jim Osmun	303-457-2787
Jean Angell	303-753-5531
Steve Komadina	505-269-4348
Barbara Peterson.....	605-787-4149

A LETTER OF THANKS ...

To Dee Goodman, Stan Lacher, Dale Morris, Don Riley, Silas Yocum:

We would just like to send you a great big THANK YOU for your heroic efforts in making the National Western Stock Show a more pleasant experience for us as exhibitors. Mike and I have been partici-

pating in the Stock Show since 1986, so we really appreciate how great it was to show up to clean stalls. You did an incredible job. Our hats are off to you!

Dale and Mike Pettigrew
Overland Trail Llamas

HALTER CLASSES:

Light Wool Halter - Females

Juvenile
Yearling

Light Wool Halter - Males

Juvenile
Yearling
Two Year Olds
Adult

Grand & Reserve Champion

Light Wool Female

Grand & Reserve Champion

Light Wool Male

Medium Wool Halter - Females

Juvenile
Special Jackpot Class
Yearling

Medium Wool Halter - Males

Juvenile
Yearling
Two Year Olds
Adult

Grand & Reserve Champion

Medium Wool Female

Grand & Reserve Champion

Medium Wool Male

Heavy Wool Halter - Females

Juvenile
Yearling

Heavy Wool Halter - Males

Juvenile
Yearling
Two Year Olds
Adult

Grand & Reserve Champion

Heavy Wool Female

Grand & Reserve Champion

Heavy Wool Male

Gelding Halter

Under 2 years (5-24 months)
Over 2 years (25 months & over)

Get of Sire (Description on page 24.)

Produce of Dam (Description on p. 24.)



PERFORMANCE CLASSES:

Pleasure Driving

Obstacle Driving

Costume

Open Pack Llama (Must carry 40 lbs. and must be 30 months of age)

Youth Showmanship:

12 years and younger

13 to 18 years old (inclusive)

Open Young Pack Llama (18 months and not more than 29 months and carry not more than 25 lb. pack)

Youth Obstacle:

12 years and younger

13 to 18 years old (inclusive)

Open Public Relations Llama

Open Obstacle

Performance Champion

A change from the Premium Book:

The **Youth Showmanship** has been moved to follow Open Pack. **Youth Showmanship** and **Youth Obstacle** will be divided into 2 age groups to make it more fair for the younger participants and easier on the moms.

A correction from the Premium Book:

The description for **Get of Sire** and **Produce of Dam** are not correct in the Premium Book. The correct descriptions are on page 24. Sorry for the confusion.



Come to the Estes Park Wool Show which changes to the Halter Class held in Estes Park on July 10 to make this the Premier

1 Light Wooled Llama Halter Classes

Light Wooled Llamas will be judged in the halter classes in their own category. Yes, this is a reality . . . Light Wooled Llamas will **not** be judged against Medium Wooled llamas (Medium and Heavy will also be judged separately!). Let's all bring our Light Wooled Llamas and show how important it is to have Light Wooled Llamas judged on their own merits. If you are unsure of the Halter Class your llama belongs in, come to the Gazebo in front of the entrance to the Grandstand between 10:00 a.m. and 10:30 a.m. on Saturday and have an ALSA judge make the decision.

2 Llama Wool Spinners Choice Contest

Entries will be carded and spun by the judge, Linda McNamara. Entry Fee: \$5.00 per entry . . . Due no later than May 1st. Entries should contain at least 2 oz. of brushings and picked clean (ready for spinning). The Llama Wool will be judged on the following: 1. Initial impression, 2. Luster, 3. Softness, 4. Cleanliness, 5. Carding - ease of processing, 6. Ease of spinning, 7. Texture, 8. Lack of guard hairs, 9. Impression of wool after spinning, and 10. Color. *Mail or deliver entries to: Estes Park Fairgrounds, P.O. Box 1967, Estes Park, CO 80517. If you want the entry returned by mail, include return postage.*

3 Trophies will be awarded to Grand & Reserve Champions including all Youth Obstacles!

Premiums will be awarded to 1st, 2nd and 3rd Place in all classes. In addition, Performance Class winners will receive engraved medallions.

Sponsors are needed for the Grand, Reserve Champions and the classes. The cost is \$75.00 for Grand and Reserve Champions and Youth Performance Classes and \$25.00 for the classes. The Class Sponsors will be listed in the Show Book and there are ads for the \$75.00 donations. Contact Alaine and Tim Redfern for information, 303-459-3245.

ol Market Llama Show. There are some wonderful
es and completely different Obstacle Courses to be
12th and 13th. The committee has been working
lama Event for the industry.

4 This will be the "Friendly Llama Show"

We are going to make this Llama Show as "User Friendly" as possible. Stall Signs listing llama, owner, ranch and the classes entered and name tags for all participants will be used. A Show Book listing all the classes and registrations, diagrams for all Performance Courses, list of the Private Treaty Sale llamas plus the sponsors will be handed out in the Registration Packet. *You must register by May 20 to be guaranteed to be included in the registration packet.*

5 Halter Classes: 12:30 p.m. on Saturday

Performance Classes: 10:00 a.m. on Sunday

This year to make the Performance Classes different from past years, all the courses will include all new obstacles which will be more fun and more challenging. They will not only be fun to take your llamas through but will more fun for the public. Come and have a great time. To make the shows run as smoothly as possible, a Holding Area will be used for the incoming class to the ring. *When you check in, study the Registration Packet for all information. Everything you need to know will be there!*

6 Private Treaty Llama Sale

A Private Treaty Llama Sale is being organized by Front Range Llama Breeders of Colorado. Participation is open to all llama owners. Sale registration fee (Sale Fee is additional to the Stall Fee) includes special eye-catching stall signs, listing in sale catalog, participation in Hands-On Review, and use of designated Sale Llama Display Area.

All sale llamas are required to have health certificates and be stalled at the Fairgrounds Friday through Sunday. Sale llamas are encouraged to show in the Llama Show. *For full information and sale registration forms, contact Dale Pettigrew, 168 Emerald Mountain Court, Livermore, CO 80536, 303-493-2335, evenings.*



Come to the Estes Park Wool Show which changes to the Halter Classes held in Estes Park on June 10-11 to make this the Premier

1 Light Wooled Llama Halter Classes

Light Wooled Llamas will be judged in the halter classes in their own category. Yes, this is a reality . . . Light Wooled Llamas will **not** be judged against Medium Wooled llamas (Medium and Heavy will also be judged separately!). Let's all bring our Light Wooled Llamas and show how important it is to have Light Wooled Llamas judged on their own merits. If you are unsure of the Halter Class your llama belongs in, come to the Gazebo in front of the entrance to the Grandstand between 10:00 a.m. and 10:30 a.m. on Saturday and have an ALSA judge make the decision.

2 Llama Wool Spinners Choice Contest

Entries will be carded and spun by the judge, Linda McNamara. Entry Fee: \$5.00 per entry . . . Due no later than May 1st. Entries should contain at least 2 oz. of brushings and picked clean (ready for spinning). The Llama Wool will be judged on the following: 1. Initial impression, 2. Luster, 3. Softness, 4. Cleanliness, 5. Carding - ease of processing, 6. Ease of spinning, 7. Texture, 8. Lack of guard hairs, 9. Impression of wool after spinning, and 10. Color. *Mail or deliver entries to: Estes Park Fairgrounds, P.O. Box 1967, Estes Park, CO 80517. If you want the entry returned by mail, include return postage.*

3 Trophies will be awarded to Grand & Reserve Champions including all Youth Obstacles!

Premiums will be awarded to 1st, 2nd and 3rd Place in all classes. In addition, Performance Class winners will receive engraved medallions.

Sponsors are needed for the Grand, Reserve Champions and the classes. The cost is \$75.00 for Grand and Reserve Champions and Youth Performance Classes and \$25.00 for the classes. The Class Sponsors will be listed in the Show Book and there are ads for the \$75.00 donations. Contact Elaine and Tim Redfern for information, 303-459-3245.

CLASS DESCRIPTIONS:

Light Wool: Minimal body wool, short neck wool with smooth head, ears and legs.

Medium Wool: Moderate body wool, smooth to minimal head, ears and leg wool.

Heavy Wool: Abundant body and neck wool with either minimal to abundant head, ear or lower leg wool.

Juvenile: 5 to 12 months

Yearling: 13 to 24 months

Two Year Olds: 25 to 36 months

Adult: 37 month & over

Get of Sire: Three offspring of either sex by the same sire. All get must also be shown in their appropriate age halter class. The sire will not be shown in the class. Points won will go to the sire.



Produce of Dam: Two offspring of either sex from the same Dam. All produce must also be shown in their appropriate age halter class. The dam will not be shown in the class. Points won will go to the dam.

Performance Champion: Must be entered in at least three classes including Open Obstacle.

How about having your llamas outside?

We have arranged for Stevens Llama Tique to bring lightweight panels for you to buy to display your animals outside to enjoy the sunshine and great weather.

The panels cost \$40.00 each, weigh 35 pounds are 9 feet long, 5 feet high.

If you are interested, contact:

Stevens Llama Tique · Rt. 4, Box 39
Worthington, MN 56187 · 507-376-4230

Are you a newcomer to the llama industry?

If you need help organizing your llamas for the Show or need to know what to do first, just call the Redferns or the Rileys.

It is easier to do than you think and everyone had a first time! This will be a fun experience for everyone.

Do you need boarding for your llamas between the Wool Market and ILA?

The Front Range Llama Breeders will provide boarding for your llamas. Just give one of them a call and make the

arrangements before the Wool Market. The names and phone numbers are listed in the ad on page 14.

Have you received your Premium Book?

If you haven't received your Premium Book by March 15, contact The Estes Park Fairgrounds, Post Office Box 1967, Estes

Park, CO 80517, 303-586-6104 and one will be sent to you immediately. We want everyone to come and have fun!

Do you have any questions?

If you have any questions about the Halter classes, please contact Alaine &

Tim Redfern, 303-459-3245; for Performance Classes call Jo & Bob Riley, 303-823-5409.

Llamas for Sale



For Sale:

Breeding and Show Quality Animals

- Bred females, some with babies at their side
- Weanling females and males born in the summer of 1992
- Experienced pack male
- Prices start at \$4000 for the females

Stud Service Available:

- **Wind River's Wizz**
Champion long wool male, National Western Stock Show
Offspring won Get-of-Sire Class, National Western Stock Show
- **Rojo's Premiado**
Senor Rojo son (Chilean) out of full Bolivian female
Exceptionally large South American

All llamas registered with ILA, stud males are blood typed.

Wind River Llamas 2752 Sinks Canyon Road Lander, WY 82520

Anne Johnson 307/332-9007 • Darlene Vaughan 307/332-7261

VETERINARIAN NETWORK

By Jo Riley

In the November Newsletter and again in the January Newsletter, I suggested a Veterinarian Network where all of our Vets could communicate with each other and have a data base set up with information about each vet and what experiences they have had with llamas and alpacas.

I am sorry to report that only 8 Veterinarians have been sent to me plus our own for a grand total of 9. This is not very many for a Network. The following are the Veterinarians and the owners who sent me their names and the Veterinarians who self-submitted:

Dr. Michelle Behrendt: Byers, Colorado by Harold Strasburg

Peggy Ford: Yuma, Colorado by Dee Goodman

Terry Jantzen: Las Vegas, NM by Rick Steadham and Karen Sterling

Dr. James McNutt: West Branch, Iowa by Kathy Bright

Kit Schmidt: Cortez, Colorado by Judi Lawson

Drs. Tim and Paula Thomson: Platteville, Colorado by Jo and Bob Riley

Veterinarians who submitted their own names!

Butch A. Connally: Eaton Rapids, Michigan

LaRue Johnson: Colorado State University, Fort Collins, Colorado

Jill M. Starcevich: Westminster, Colorado

I am hoping that the rest of the membership will send me the names of their Vets so this can become a reality. This can be a Win-Win situation but I can't make it happen without your help. By the next Newsletter, let's have lots of names. I will print the names of all Veterinarians next time so please send me your Vet's name.

NOMINATIONS ARE NOW OPEN FOR MEMBERS OF RMLA'S BOARD OF DIRECTORS.

This includes:

President-Elect (2 year term)

Vice President (1 year term)

Secretary (2 year term)

Send your nomination(s) to:

Lougene Baird

Plum Valley Llamas

2210 Pinewood Rd.

Sedalia, CO. 80135-8444

303-688-5445

Deadline: April 1st

NO RENDEZVOUS IN 1993

The crew at Wind River Llamas in Lander, Wyoming want you to put the first weekend in August, 1994, on your calendar RIGHT NOW. That will be the date of the biggest and best "Wind River Llama Rendezvous" ever.

1993 is bringing the ILA conference to our area and we are putting a great deal of effort into making it unforgettable for our llama friends around the country. Therefore, we decided not to tackle a show in the same summer. We'll be back in 1994.

BLACK HILLS STOCK SHOW SUMMARY

by Warren Young

Over 250,000 people attended the Black Hills Stock Show, which ran from January 30 through February 7. The show is now the third largest stock show in the country and still growing. At this point, llamas are not an official part of the show and have been confined to an upstairs room in the Rapid City Civic Center with the baby pigs, dogs, calves, goats, and one huge Belgian draft horse and her foal.

The S.D. Llama Association attempted to increase the llama awareness of local ranchers and interested city slickers by showing llamas all nine days. Area owners took turns showing their llamas and answering the eternal questions: "They spit, don't they?" and "What good are they, anyway?" By the end of each day, llamas and owners were ready to go home after confronting several thousand onlookers and would be touchers. It was encouraging to find many city folk and cattle ranchers becoming more aware of the value of llamas and asking questions about guard llamas, wool, packing, care and health costs. The RMLA booth was of great help in answering questions and generating interest. The S.D. Llama Association appreciated the booth greatly.

The highlight of the show was Saturday's seminar given by Dr. LaRue Johnson emphasizing llama herd health, llama nutrition, and llama prenatal and postnatal care. Dr. Johnson demonstrated some nifty llama dental work, foot trimming, micro-chipping, a slick method of using pour-on parasite control, general body evaluation, and blood drawing techniques. It should be noted that the seminar was part of a three

day program sponsored by National College's veterinary program, and many local vets and vet students were on hand.

Dr. Johnson enjoyed the local llama owners and the hospitality of the Dewald's so very much, that he ordered airplane mechanical difficulties and decided to stay the evening! He then joined the Llama owners for a night on the town and dinner at a local supper club. We would like to give Dr. Johnson a special thanks for his patience and endurance while answering questions from llama owners who were more hungry for his knowledge than their own meals!

We are attempting to get llamas as an official part of the Black Hills Stock Show, but have been meeting local resistance. Officials are pressed for room and want us to have a sale. It would cost approximately two thousand dollars, and we need solutions to llama housing problems as cattle and horses have first priority. If anyone has ideas and/or think they would like to attend a llama show in Rapid City, South Dakota during the above time period, please contact Barb Petersen at 605-787-4149. Your support would give encouragement and endurance to our local efforts.

COLORADO TRAIL SCHEDULE

This is the tentative schedule for Cindy Ross and Todd Gladfelter. To send mail, please address as follows:

Cindy Ross/Todd Gladfelter/Sierra & Bryce

General Delivery

Town State Zip

Please hold for hikers!

ARRIVAL DATE	MILE	TOWN AND ZIP
July 6	0.0	Denver
July 15-17	89.9	Breckenridge (80424)
July 21-24	140.1	Leadville (80461)
August 1-7	239.2	Salida (81201)
August 11-19	326.6	Creede (81130)
August 19-28	394.1	Silverton (81433)
Aug. 27-Sept. 7	465.5	Durango (81301)

Editor's Note: One of the children is in diapers!

THE COLORADO TRAIL AND CINDY ROSS

Our town stops are listed with information on where we could use help the most. All towns offer lodging, so that is not a dire need, but we would welcome a floor to sleep on or a backyard to camp in. Our biggest concern is shuttling into town since hitch-hiking with kids and llamas could be difficult.

Our needs when we are in town do not require that we stay in that particular town, except to stop at the post office to pick up mail. We will need to shower, do laundry, and stop at a grocery store.

Also, if there is more interest to meet us in towns other than our scheduled ones, we'll gladly schedule them in as long as two top priorities are met . . . keeping the kids happy, and getting to Durango.

We can keep the people updated who are helping us with shuttling by phoning them in the town before and telling them what day we plan on arriving. This does not guarantee that we'll be able to meet at a pre-determined time and place since we could easily get a day behind or ahead. Probably the best way for us to rendezvous would be for Todd to hitchhike into town at the road crossing, or the nearest town, while Cindy stays with the kids and the llamas. We can call our helper and arrange for Cindy, the kids, and the llamas to be picked-up.

DENVER

We plan on coming out a week early to meet some of the people who will be helping us, work with the llamas, and get acclimated. We'll do some day hikes and camping in the Rocky Mountain National Park. We have a friend in Denver but we'll still need to work out details with llama shuttling and a place to leave our truck. A lot will depend on where the llamas are coming from. Once all of that is taken care of and we get on the trail, we were thinking it may be helpful to have someone with llama experience come along with us the first few days.

DENVER to BRECKENRIDGE

We should not need any help here. The only problem we can foresee is if the haul of 9-11 days is too much of a load for the llamas to get broken in with. The options of resupplying in the town of Jefferson three days earlier would only save a few pounds of food weight, but our main concern is dirty diapers- 20 lbs. dry, 40 lbs. wet! It may be good to set up another pick-up just in case we need it.

BRECKENRIDGE

We won't be needing any shuttling since we'll walk in on an alternate route to avoid any hassle. Our only concern is to have a place to keep the llamas while we are in town.

LEADVILLE

We will need shuttling to and from the trail and a place to keep the llamas while in town.

LEADVILLE TO SALIDA

This is another long haul - 10-13 days. We should know by this point in the trip if this length is feasible or if we'll need to get out earlier. Two towns are an option for an early re-supply: Twin Lakes or Buena Vista. We should set up an alternative resupply at one of these towns to be safe.

* On August 7th, Cindy must speak in North Carolina and needs to catch a flight in Colorado Springs on the 6th. Todd and the kids will base out of a campground or a motel or wherever for these few days.

CREEDE

We will need shuttling to and from the trail and a place to keep the llamas while in town.

SILVERTON

We will need shuttling to and from the trail and a place to keep the llamas while in town.

DURANGO

No shuttling will be needed. Just a place to keep the llamas until we can get them back to the owner and pick up our truck.

We are planning on trying to make the Fairplay Pack Llama Race on July 24th. We should be around or in Leadville at the time, if it's possible to find a ride.

(Their schedule is on page 27.)

DEAR RMLA MEMBERS,

By Dale Pettigrew

I'd just like you to know that after being a member of this organization for ten years, I think that it continues to be an incredibly enthusiastic and dedicated group of folks. RMLA is known for undertaking projects that make substantial and meaningful contributions to the llama community, and the 1993 National Western Stock Show is a current case in point. I just want to be sure that some proper recognition is given here for a substantial effort.

One of the problems in participating in the NWSS the past few years is that llamas are stalled in the horse barn. Typically when llama exhibitors arrive, their stalls have one to two feet of wood shavings and horse manure in them, and sometimes even a horse. So, the first thing the exhibitor must do is clean her stalls, which means finding a shovel, if she didn't bring one, and a cart (of which there seems to be only one, already in use when you're looking for it) to load the bedding in. Meanwhile the loading area attendants are pressuring you to get your animals and tack unloaded so you can move your vehicle so the next exhibitor can pull up. It's enough to make a body not want to participate ever again.

But our Board of Directors realized that in spite of the conditions, the NWSS is a huge opportunity to promote llamas. So, a plan was made to do something concrete to make the situation better. Dee Goodman brought a skid loader from home (2 hours from Denver) and Stan Lacher, Dale Morris, and Don Riley met him at the horse barn Sunday night, before the llamas were to arrive Monday morning. All night they shoveled out the stalls and begged/cajoled horse owners to move their horses out as much as possible. The

result was that the majority of the 130 stalls were clean and ready for llamas to move into Monday morning. Stan Lacher and Silas Yocum continued to help clean stalls Monday morning as they were vacated. Some stalls didn't get cleaned because there were horses still in them as long as the manpower and equipment were available; if you were one of those exhibitors, I hope you'll be forgiving.

It was not RMLA's responsibility to do this as RMLA is not officially involved in putting on the llama show. And the Stock Show administrators didn't lend any support to the effort. As a matter of fact, the lack of communication among themselves made it even more difficult to get the job done. But that didn't stop these RMLA members who saw a job that needed doing.

The ramifications of this effort are very important. This was probably the largest number of llamas and exhibitors ever at the NWSS. I met lots of new llama owners who were participating in their first llama show. It couldn't have been better timing to start them out with a positive experience. And hopefully we demonstrated to NWSS administrators that RMLA is serious and willing to make the llama show a successful event for llama exhibitors and the public.

So, once again, thank you, Dee, Stan, Dale, Don, and Silas. Thank you for doing such a dirty job, and thank you for carrying on the RMLA tradition of jumping right in and getting the job done.

(Note: Don Riley and Silas Yocum aren't even RMLA members.)

Do You Feel Lost in the Crowd? LANA Can Help You Stand Out

LANA stands for **Llama Association of North America**. However big and over encompassing that may sound, LANA is about **you and your llamas and alpacas**. LANA is about the individual, the family, the rancher, the people who know llamas and alpacas first hand. The people who make this industry something more than just business. LANA is personal.

LANA's annual conference is focused on the new comer — to meet and feel he (or she) has made a new friend in getting to know some of us who have been in llamas or alpacas for a while. The conference is for sharing, learning, and most of all, absolutely most of all, to have fun with our animal partners.

For those of us who sell llamas and alpacas, LANA helps promote them. To help those who do not yet own llamas or alpacas and learn what makes our animal friends the special creatures they are.

LANA's Newsletter helps to share information among members and others in the llama community. It helps all its members communicate ideas and brings us all in our distant places, closer together.

LANA's Board of Directors and other dedicated volunteers strive to improve and update the benefits that LANA provides its members — take notice of the consistent low cost of being a LANA member. And, to help ease the burden of even that, the newest benefit through LANA membership, is the group discounts negotiated with providers of goods and services. With these discounts, you can save many times the cost of LANA's annual membership fee (call for details).

So, if you haven't joined LANA yet, if you haven't renewed yet, or if you know of new people interested in the industry, consider LANA — **the organization that is about you and your llamas and alpacas**.

If you haven't attended a LANA Conference recently (or even if you have) set aside July 22, 23, 24 and 25 of 1993, for in Grass Valley, California, we will be having our best conference yet! We are extending the amount of time set aside for the popular **ROUND ROBINS** (as per the membership's request). There will be a well rounded collection of speakers and demonstrations. The youth membership has decided to take charge of their own agenda and they are hot on the trail of putting on our most dynamic youth program yet. Rumor has it that the adults were envious of some of the youth programs going on at the last conference, and this year's promises to be even more exciting. The llama and alpaca show will be streamlined and set for fun for us as well as entertainment for the public. So, come — and bring a friend. If you have ever attended a conference and felt small or forgotten, join LANA and become part of the organization that is personal, that is about you and your llamas and alpacas.

Call Virginia Christensen at **(702)265-3177** for a membership application or write LANA, PO Box 1882, Minden, NV 89423. Don't delay. Avail yourself of the benefits starting today.

NEW PET PARTNER TEAM WILL PROVIDE ANIMAL CONTACT AT LOCAL FACILITY

Sally German and her llamas, Larry and Narcissus, recently completed training through a nationwide program which registered them as a person-animal volunteer team qualified to provide animal-assisted activities (AAA) to patients/residents of Hilltop Nursing Home in Cripple Creek, and other facilities which contact them wanting visitation.

Sally German, Larry and Narcissus were registered by the nationwide Pet Partners Program, which established guidelines for member people-animal teams to qualify them to enter hospitals, nursing homes and other facilities. The Program registers teams that successfully complete health and temperament screening and volunteer training. Larry and Narcissus are the first llamas to successfully complete the certification process.

Sally German and other Pet Partners volunteer with an animal-assisted activities (AAA) or animal-assisted therapy (AAT) program. AAA volunteers provide informal animal contact opportunities to hospital patients, nursing home residents and people in other facilities. In AAT programs, volunteers and animals become formally involved in patient treatment regimens.

The Pet Partners Program was created

by the DELTA SOCIETY, a nonprofit organization based near Seattle, WA, that works to improve health and well-being by promoting beneficial contacts among people, animals and nature.

Sally takes her animals to nursing homes because she feels that their exotic appearance, curious nature and gentle behavior make them ideally suited for therapeutic visits. She has seen them break through the barriers set up by many withdrawn and depressed people. They also provide excitement for everyone with whom they come in contact.

To become a certified Delta Pet, Narcissus and Larry passed a health examination administered by Kevin Conrad, and temperament tests administered at a Delta Society workshop in Ft. Collins at CSU. Sally attended the workshop to develop the proper communication skills needed in Animal Assisted Activities.



John & Emily
Klauss

• November through April •
210/535-4443 • P.O. Box 609 • Helotes, Texas 78023

• May through October •
719/748-8115 • P.O. Box 788 • Florissant, Colorado 80816



Pfour Pfrangles
Llama Pfarm

Kerby, Louie, Aileen
& Clay Pfrangle

(307) 347-2533

527 Sunset
Worland, WY 82401



JULIE & DOUG MESSICK
7411 NORTH ROAD 2 EAST
MONTE VISTA, CO 81144

719/852-4852



OREGON STATE FAIRGROUNDS ★ SALEM, OREGON ★ JULY 1-3, 1993

Featuring...

**THE FIRECRACKER FUTURITY
THE FIRECRACKER OPEN SALE
THE FIRECRACKER CHALLENGE**



*Join us for the best selection of breeding stock in the West
Add to your herd, enjoy the festivities, see llamas in action
Call or write for more information*

Presented by FIRECRACKER, INC. • Dick & Pat Wickum • 21325 Finn Road, Sheridan, OR 97378
(503) 843-2765 • (800) 876-8816 • FAX (503) 843-3030

ESTES PARK WOOL MARKET ALPACA FLEECE SHOW

Chairperson: RoseAnn Knoblock, 913-284-2589 • **Entry Fee:** \$5.00 per entry
Fleeces: Entries accepted Friday, June 11, 5 p.m. to 6 p.m. at the Fairgrounds Office Committee Room or can be shipped pre-paid between May 15 and June 5 to: 1209 Manford Avenue, Estes Park, CO 80517. Fleeces will be returned UPS COD after the show. (Entry tags available upon request.)

SHOW RULES:

Show is sanctioned by ALSA and all rules and guidelines for this show will be in accordance with ALSA. Alpaca fleeces must arrive clean and free of vegetable matter. The show fleeces will be judged on fiber fineness, character, crimp, softness, luster, staple length, uniformity throughout the lock and fleece and amount of guard hair. Fleeces with more than 30

months growth shall be disallowed. Each fleece shown shall: 1. consist of the prime fiber only and be displayed full and intact, 2. have no tying, 3. be shown in a clear plastic bag provided by exhibitor. Fleece weight will be noted. **For more information, please consult the Wool Market Brochure on page 21. All the information is contained there.**

AOBA CONFERENCE JUNE 10-14 ESTES PARK, CO PRIVATE TREATY SALE IN THE ALPACA TENT

For more information or registration packets contact:
Hobert Office Service, Ltd., P. O. Box 1992, Estes Park, CO 80517
Phone: 303-586-9519 FAX: 303-586-6685
More information in May Issue.



Cameos Nautilus
Cameos Carbierre X Nutralite

Castle Llamas presents to the Rocky Mountain Region a herdsire of distinction. Consider adding his silky red fleece and regal carriage to your spring breeding program. To arrange a rendezvous, contact:



MONTE & CAROL BALLEW
13075 Rist Canyon Rd.
Bellvue, CO 80512
303/484-3537

TOM VAN VELSON
12743 Rist Canyon Rd.
Bellvue, CO 80512
303/484-1306

WOMAN'S SOLO LLAMA TREK PLANNED

By Jean Angell

This May I will be beginning a five month solo llama trek in five states. I want to inform RMLA members about the objectives and logistics of the trip, my background and goals, and also to ask for input and assistance from the membership.

There are multiple purposes for this trip. First, I hope to demonstrate the important and healing effects that being in the wilderness have upon people's well-being and to show how easily that earth connection can be re-established through backcountry travel with llamas. Currently, I am completing a Master's Degree Program from Lesley College in which I have trained as a wilderness psycho-spiritual guide and educator. This trek is part of my final project which will be the basis of my thesis writings. Portions of the trip are a practicum experience for transformational treks, which I am developing through my Master's program. (These trek/workshops will offer personal growth experiences in increased nature awareness and are designed to demonstrate the therapeutic benefits of being with llamas). I see this trek as an excellent opportunity to assist in showcasing the wonder and value of llamas and their low environmental impact, and to explore and quantify the effects of long-term travel on llamas.

Over the past years in my work within the llama community, many RMLA members have heard me talking of this trip and these workshops; now the time is finally here to actually DO this. I have a background of twenty years experience in earth-based living and backcountry wilderness travel through hiking, backpacking, some horsepacking, a season of llama packing, and three years of living in a tipi. I have studied with Native American teach-

ers from various tribal backgrounds, for several years with Tom Brown (tracker and acclaimed outdoorsman), and with outdoor leadership trainers across the country. Currently, an article that I am writing on women's solo adventure travel and empowerment is contracted to be published in a therapeutic journal. Finally, I am a member of the RMLA Marketing committee driven to show the general public how terrific llamas are!

Here is how I see this trek unfolding. I intend to begin the trek in May in the Tonto and Coconino National Forests, Arizona; spend most of June in the Gila, Santa Fe, and Carson National Forests, New Mexico; arrive in Colorado in July to do portions of the Continental Divide Trail; travel to the Bitter Root Range, Montana/Idaho in August; and end up in the Uinta and Manti La Sal National Forests, Utah in September. The New Mexico, Colorado and Montana/Idaho portions of the trip will begin with one week practicum workshops where "mock clients" join me for a week of trekking activities. Then they will get picked up and I will continue to trek for several more weeks after which, llamas and I would then rest for several days before trailering to the next location. Thus, out of five months of travel time, three weeks would be with other folks and the rest will be solo time - just me and the llamas.

Here is how RMLA members can help:

- 1) furnish information (from members who are local to the areas I've mentioned) on trails with continuous running creeks, on good grazing areas and trailhead dropoff points;
- 2) make general suggestions on trip logistics as I've described them;
- 3) offer advice regarding llama nutrition for

WOMAN'S SOLO LLAMA TREK PLANNED (con't)

working animals; 4) provide the use of three experienced geldings and their pack gear for each state's section of the trip or three who could do the whole trip; 5) assist with trailering from one trailhead to another. 6) I am also looking for people who would like to bring their own llamas and join me as mock clients during those week-long portions of the trip I've described. Each one week transformational trek will be geared for either women, or couples, or mothers and sons/daughters.

My long-term goal is to work as a facilitator with commercial outfitters in various states who are interested in offering personal growth oriented treks. My major hope is that from this work will

come a means to teach people how to become ecologists out of their love for the earth, and also to demonstrate to others a healthy and vibrant way of harmonious living on the planet (enhanced by association with llamas!).

Thus I invite you to assist me, participate with me, and offer logistical commentary as soon as is possibly convenient for you. If you can help with llamas, equipment, trailers/transport vehicles, trail information, or want to come during a workshop portion of the trek, please contact me or Dee Goodman as soon as possible. I can be reached by phone at 303-753-5531 or 651-2470 and by mail at 501 Emery Street, Longmont, Colorado 80501.

**Please sign-up your VET for the Veterinary Network!
It is for the betterment of all llamas and the industry.**

Packing with Llamas

If this is your interest,
then you need
to be reading

The Backcountry Llama
bi-monthly newsletter.

Sample Copy \$2.00

The Backcountry Llama
2857 Rose Valley Loop
Kelso, WA 98626

Rates: \$10 for a year
\$18.00 for 2 years
Canadian: \$12 for a year

Betty Barkman
Cindy Rodriguez
are offering

Hands-On Clinics.

We teach everything from Basic Training, Herd Management Training Needs, Showmanship, Obstacle, and so much more.

We have clinics scheduled March to July in Oregon & California. Call or write for a list of dates, themes, and locations.

If you are interested in hosting one of our clinics in your area, call or write:

Betty Barkman 209/855-6227
34190 Lodge Road, Tollhouse, CA 93667
Cindy Rodriguez 209/838-1385
17644 S. Carrolton Rd., Escalon, CA 95320

FOR SALE

BREEDING AND WEANLING LLAMAS FOR SALE. Stud service available to Macho's Ace and several other proven studs for sale: Stud quality males and four females bred to Macho's Ace. Also Yak, Rocky Mountain Goats, Elk, and Miniature Donkeys. Jerry McRoberts, Gurley, NE 69141, 308-884-2371.

BEAUTIFUL STUD, Sandstone-coloring, excellent conformation, 5 yrs old, medium length wool. Great buy at \$900. Also, 2 young males (almost 2 yrs), lovable dispositions, mostly white, trained, \$500 each. Contact Jerry Thorson-Boudreaux, Walkabout Llama Ranch, Estes Park, CO. Phone 303-586-9460.

YOUNG FEMALES FROM 10 MONTHS TO 12 MONTHS OLD. Also bred females. All guaranteed. One five-year-old gelding. Call 800-654-3691. Reger Ranch, Morton Llamas, Woodward, OK.

REGISTERED STUD QUALITY MALE FOR SALE OR TRADE. Two year old, dark brown and black with medium length wool sired by Sir Lawrence Olivier, \$1000 OBO. Dave and Sue Whittlesey, Steamboat Springs, CO. 303-879-3987.

OUTSTANDING OPPORTUNITY TO PURCHASE TOP QUALITY FEMALES. Proven mothers bred to multi-Champion GANDY DANCER and beautiful daughters of Gandy (some bred). 15 to choose from, various styles, sizes & colors. Starting at \$5500. Health, reproductive guarantee. Llamarage, P.O. Box 574, Platteville, CO 80651; 303-785-2463.

THREE IN ONE PACKAGE, six-year-old pregnant female with a five month female cria. \$12,500.00. Earley's Llamas 303-327-4511.

M CHAMMER BABIES NOW ARRIVING! Colorful, Fuzzy, Correct, Star Quality. Come for a visit. Also available: weanlings, yearlings, bred females, \$4000-\$8000. Guaranteed. Stud Service included. Home of M C Hammer. TTEAM trained. Can deliver. Overland Trail Llamas, 303-493-2335 CO.

STARTER PACKAGE Two young pregnant females one due late April other late August and a stud quality 4-year-old male. Females both have Mexican bloodlines. Stud has Poncho Via & Gildersleeve bloodlines. Price for package \$11,500 or can be purchased separately; females \$6,000 each, stud \$1,500, Video available, MYSTICAL CRITTERS 6095 Raderville Rte, Box 3, Casper WY 82604, 307-473-1625.

GRAND VALLEY LLAMAS offer bred females and polite, well-trained youngsters for sale. One free breeding with any female purchase with a choice of our full-Chilean, half-Bolivian or domestic herdsires. Please call Judy Sealy for more information, 303-241-7921 in Grand Junction, CO.

FEMALE LLAMAS AND GELDED ALPACAS. Two young bred females due May and October and one 6-month-old. All sound athletic type. Very reasonable prices. Also half Chilean 14-month-old Señor Rojo daughter with quality roan fleece. For you spinners, young affordable gelded alpacas. Call Jodi Sleeper, 505-666-2492.

YOUNG MALE WITH A FUTURE, finished in-the-money at NWSS (sixth in a class of twenty). DOB 4/18/92. Colorful black and white. Symmetrical black markings. Super conformation, bone, and muscle. Great head. Sire: Rocky Mountain Handsome. Dam: Sitting Bull granddaughter. \$1300. Steve and Kathy London, Dusty Llamas, 1650 Park Lake, Boulder, CO 80301, 303-665-7686.

HERD REDUCTION SALE. Large Boned Quality Breeding Stock. Weanlings, Yearlings, Bred Females, Studs. All Young. No Culls. Championship Bloodlines. Canadian, Domestic, and South American Outcrosses. Medium to Super Woolly. Males from 500. Bred Females from 5,000. Write or call Nancy, Valley View Ranch, 13333 County Road 1, Ridgway, CO, 81432, 303-626-5700.

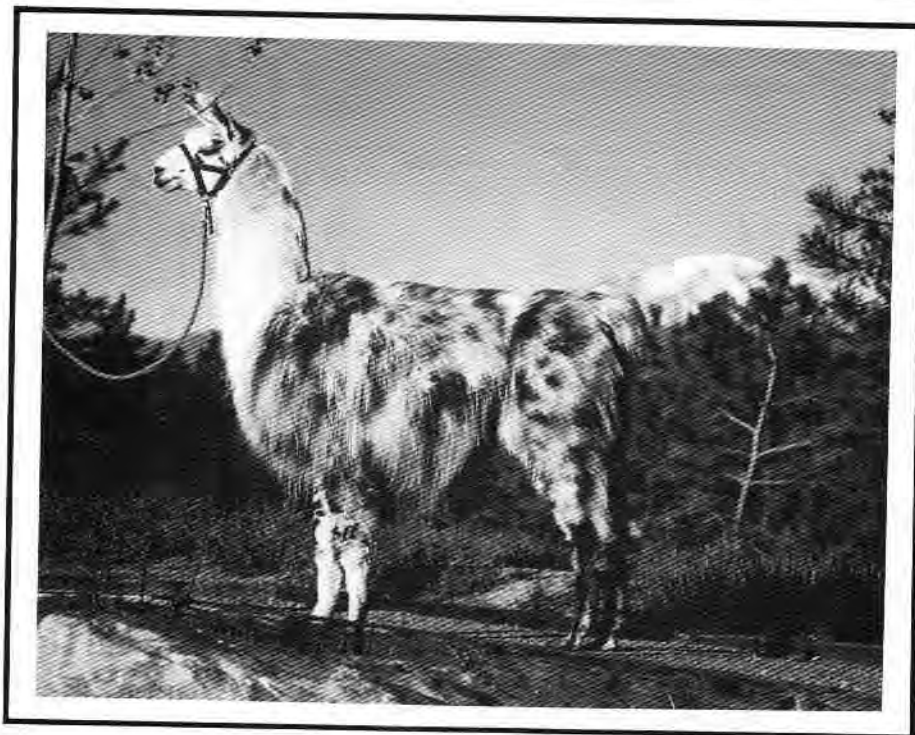
HERDSIRE ADS

AVAILABLE FOR STUD SERVICE JOE DANDY. We have just acquired this **NWSS Champion** that has sired some high dollar, premium woolled llamas. He has been out of service for a couple of years but is now ready to service your ladies and bring this potential to your breeding program. Fee \$750.00 includes up to 90 days boarding. Guaranteed live birth. Video available. Call **MYSTICAL CRITTERS** 307-473-1625.

BREEDING FOR QUALITY makes \$ense! Multi-Champion GANDY DANCER (Oak Hill Kit Carson x Huari), sire of Champions (9 Champions, 5 Res. Champions in 1-1/2 years). Invest in one of your own! Limited time only - \$1000, live birth. Llamarage, P.O.Box 574, Platteville, CO 80651; 303-785-2463.

INDIAN PEAKS RANCH offers quality, full time breeding services and care for your females. Indian Peaks Yukon - A "Big" Colorado favorite; Indian Peaks Camacho Chief - Big, black and beautiful; Prospectus' Windfall - The up and coming tuxedo beauty with killer legs. Live Cria Guarantees; All standing at IPR @ \$1,500. Call now for reservations for '93 season. Limited. Alaine or Tim at 303-459-3245.

INDIAN PEAKS CAMACHO CHIEF will be returning from Texas in April! We will be accepting only 10 reservations for the 1993 breeding season. \$1500. L.C.G. Chief's offspring are outrageous! And 80% female! Call Indian Peaks Ranch, Alaine or Tim for breeding portfolio and reservations at 303-459-3245 or pay us a visit!



TABERNASH

*Is now in the heart of Plum Creek Valley
Sedalia, Colorado*

Plum Valley Llamas is pleased **Champion Kahura Uyu Tabernash** is its herd sire. When you come to Colorado for the Snowmass I.L.A. Conference or need spring breedings, Tabernash will be waiting to service your llamas' breeding needs. This great llama has outstanding performance records. Including...

Grand Champion Get of Sire
National Western Stock Show in 1990.
60 Championship points in just 4 shows

"Tab's" intelligence, gentle disposition, strength, conformation, and awesome size will be welcomed in your herd. Present records show **Tab** has sired 70% females.

Stud fee -- \$1,000, with discounts on multiple breedings.

Additional information and photographs of Tabernash available upon request:
2210 Pine Wood Road Sedalia, CO 80135
303-688-5445 or 303-688-9122
Fax: 303-688-6814

RASPUTIN

Commander Cody x Sun Valley Roxanne



Let this Montezuma progeny add a touch of class to your herd

Live birth guarantee

Breeding Fee \$1000 / Multiple Breeding Discounts

Call for a breeding appointment

Serenity Lane Llamas

Bill & Donna Brown
15293 West Highway 24
Woodland Park, CO 80863

Since 1985

(719) 687-1224

NEW MEMBERS AND ADDRESS CHANGES

Sarah Lobser
6875 West David Ave.
Littleton, CO 80123
303-973-1028
JUNIOR MEMBER

Ken R. Rogers
LONE STAR AGENCY, INC.
601 N. Main
Hereford, TX 79045
806-364-0555

Adryan Ritter
P.O. Box 483
Steamboat Springs, CO 80477
303-879-4730
JUNIOR MEMBER

Debby Rothwell
4320 Utica St.
Denver, CO 80212-2435
303-477-2109

Jan Adamcyk
2642 S. Sable Way
Aurora, CO 80014-2404
303-751-1634

Kathi McKinney
BOBKAT LLAMAS
71 Schafer Meadows Ln. No.
Montesano, WA 98563
201-249-5627/5017

Harold & Sharon Herbold
PIKES PEAK WOOLIES
15350 Hwy 83
Colorado Springs, CO 80921
719-495-3092

Tammy & Randy Zornes
RIVERS DIVIDE RANCH
17850 Fremont Fort Road
Peyton, CO 80831
719-749-2228

Jeff & Violeta Polk
GLOCCA MORRA
25074 No. Turkey Creek Rd.
Evergreen, CO 80439
303-674-6753

Marti J. Kalko
RR #1, Box 915
Honesdale, PA 18431

Cheryl Easter
P.O. Box 930
Flora Vista, NM 87415
505-334-3095

Pat Skelton
HOLLY-BROOK FARM & LLAMA RANCH
2302 Legge Road
Mt. Vernon, WA 98273
206-445-5262

Lee & Lyn Kirkpatrick
P.O. Box 1204
Aztec, NM 87410
505-334-3790
JUNIOR MEMBERS

Doris Beck
TWO TOES RANCH
P.O. Box 1600
Cortez, CO 81321-1600
303-565-6057

Sue Kemp
GRIFFITH CENTER
P.O. Box 95
Larkspur, CO 80118

MARKETING CORRECTION:

Frank & Eleanor Palmisano, Gold Rush Sale organizers, have designated 1% of their Spring, 1993 sales to RMLA marketing. It should have read: 1% of their Fall, 1993 sales to RMLA marketing.

NO BOARD MINUTES IN THIS NEWSLETTER

Minutes from the "brief" board meeting at the NWSS will not be printed due to the shortness of the meeting and the fact that no new business was brought up.

GUARD LLAMA STUDY REPORT

Dr. Bill Franklin's Final Report: Dr. Franklin has promised a final report on the Guard Llama study the middle of June in time for the ILA conference.

Timberline Llamas, Inc.

* pack trips * breeding * sales *

Wes and Mary Mauz
30361 Rainbow Hills Rd.
Golden, CO 80401
(303) 526-0092

PAINTED SKY LLAMAS

Bert & Holly Vicars
Diana Vicars

4437 Hwy. 23
Ridgway, CO 81432
303-626-5896



LIBRARY NOTES

by Chris Switzer

The library list has been updated and will be mailed out with the directory. Please keep it for reference and add new titles when I write about them. Please put your **last name** on the return envelope . . . that's how I file, rather than by title. Thanks ahead of time.

There are 158 different items in our library - not counting 2nd copies. Here's the breakdown: Articles-29, Books-44, children's books-26, videos-25, wool-28, and miscellaneous-6.

Several new items: Video by AOBA, World's Greatest Livestock Investment, (Alpacas) 1992. For children, a Zoo book called *Camels*. And wool articles: "A Closer Look at Alpacas and how they differ from their llama cousins" by Elayne Zorn and Juan Cutipa Colque plus "Alpaca in the Raw" by Ann Asman. Both are from Spin'off maga-

zine, June 1985. (All 3 are on your new list.)

I've never charged for overdue items but sometimes a donation comes back that way or else to help with postage. There is a budget from the Board for the library. This past year it was about \$1,000 plus donations. (I started 1992 with a little over \$500). Items mailed within Colorado have been sent library rate, which has saved a lot. There have been no complaints. Out-of-state goes 1st class, many times priority, due to weight. 2 weeks check-out for videos and 1 month for books and articles. Thanks to Gail Segreto and Stan Lacher for their donation.

Your ideas and suggestions are most welcome. Donations of items, old as well as new, really help. I look forward to hearing from you.

The Llamathon will be held this year in Fort Collins, Colorado on October 2 and 3. Look for all the details in the next newsletter!

Driving Clinic: April 17th and 18th with Jerry Dunn. Come join us and work ground driving to rollin' down the road. We will provide the llamas. Make your reservations now! Bear Track Farm 303-277-1129.

CLASSIFIED ADS AND TRADES

WANT TO ENJOY YOUR LLAMAS EVEN MORE?!! Learn effective, nonforceful ways to communicate through TTEAM training techniques: Haltering, leading, loading, picking up feet, grooming. For weanlings or adults, two-legged and four-legged. Your place or ours. Dale Pettigrew, Overland Trail Llamas, Livermore, CO 303-493-2335.

TTEAM EQUIPMENT: Gentle grooming brush, \$12. Halters, \$19.50. Book: *Llama Handling and Training: The TTEAM Approach* by Marty McGee, \$26.75. Video: "Basic TTEAM with Llamas" by Marty McGee, \$67.50. Prices include shipping. Overland Trail Llamas, 168 Emerald Mtn. Ct., Livermore, CO 80536. 303-493-2335.

LAMASHERD(tm) SOFTWARE for efficient management of llamas/donkeys/horses/goats. Detailed animal, breeding, health, show, owner, accounting information. Pedigree, progeny charts. Many reports: Herd Inventory, Breeding/Health Treatment Calendars, Breeding/Health/Show History, Accounting by animal/category, more. Fast, efficient data entry. \$200-\$410. SWCS, 65711 TwinBridges, Bend, OR 97701, 503-389-1913.

WANT TO TRADE: Looking for a four or five year old WELL PROVEN medium to long wool heard sire with good bloodlines. Have to trade a three and a half year old proven medium wool male and a weanling female. Earley's Llamas 303-327-4511.

THE STORY AND NEEDS OF EARTHWATCH

By Jo Riley

The mission of Earthwatch is to improve human understanding of the planet, the diversity of its inhabitants, and the processes that affect the quality of life on Earth. We are an international company of citizens and scientists working to sustain the world's environment, monitor global change, conserve endangered habitats and species, explore the vast heritage of our peoples, and foster world health and international cooperation.

Earthwatch was founded in 1971 as a tax-exempt institution. The organization sponsors scientists, artists, teachers, and students to document a changing world. Members of our EarthCorps have supported 1,523 projects in 111 countries, providing scientists with 35,000 volunteers and \$22 million in funds and equipment to solve problems on the frontiers of knowledge. Earthwatch has offices in Boston and Los Angeles, U.S.A.; Melbourne, Australia; Oxford, England; and Tokyo, Japan. You're asking, "What does this have to do with llamas and alpacas?"

Glad you asked! Earthwatch has a research proposal and they need volunteers to assist them and have contacted RMLA for help.

Project Title: The Evolution of High Andean Puna Ecosystems: Past and Present Changes in the Vegetation under the Impact of Native Andean Pastoralism, Bolivia and Chile.

Principal Investigator: Dr. Carlos Baied

Affiliation: Department of Geography, University of Montana

Research Sites: Sajama National Park, Bolivia (Teams I-IV) Lauca Biosphere Reserve, Chile (Teams III and IV)

Team Dates in Field:

Team I: July 4-17, 1993
Team II: July 18-July 31
Team III: August 1-14
Team IV: August 15-28

Team Size: Minimum 6 Maximum 8

Staging Area: La Paz, Bolivia

Project Cost: \$51,040

Your Share: \$1,595

Purpose of Project:

This project is designed to increase our understanding of the past and present impact of native pastoralism upon puna ecosystems of the high Andes. The puna records of environmental change over the last 6,000 years provide a tantalizing set of possibilities which can only be investigated and interpreted by conducting further interdisciplinary work on present and past vegetational changes.

On the Andean High plateau known as the altiplano, the Aymara people and their predecessors have herded llamas and alpacas for at least 6,000 years. What impact has such long-term domestication had on the puna, the high-altitude grasslands where these handsome camelids graze among the clouds? Dr. Baied and colleagues will lead EarthCorps crews to 4,000 meters in these adjoining reserves to find out. Data will be plugged into past climate models and given to local policymakers eager to preserve this complex ecosystem.

Field Conditions:

Volunteers who speak Spanish (not required) will interview Aymara pastoralists for information on forage, land use, and management practices. All team members will set up experimental plots, collect and record plant specimens, map the region, and study both present-day and ancient pollen. Teams I and II work in Sajama; Teams III and IV in Lauca. In La Paz, volunteers stay in a hotel; in the field, they'll share tents and cooking.

The bottom line is that they are desperate for volunteers for the llama scientists. If you are interested and need more information, either contact Jo Riley or Earthwatch, 680 Mount Auburn Street, Box 403, Watertown, MA 02272, Telephone: 617-926-8200, FAX: 617-926-8532.

AGRICULTURAL LAND CLASS. (con't from page 13)

contest. The county assessor's office will consider the protest and file either a Notice of Adjustment or a Notice of Denial. If the assessor's office submits a Notice of Denial, the taxpayer has the right to appeal to the County Board of Equalization for further consideration. In order to preserve the right to appeal to the County Board of Equalization, the appeal must be made within the deadline established by law and as printed on the Notice of Denial.

The Board of Equalization will schedule a hearing in which the taxpayer has a right to be represented by an attorney. The taxpayer is given the right to testify and call witnesses and to present evidence in support of the contested classification. Likewise, the County Assessor's office has the same rights. The hearing

will be presided over by a hearing officer who will make findings and recommendations to the Board of County Commissioners. The Board of County Commissioners will issue a ruling.

If that ruling is adverse to the taxpayer, the taxpayer has a right to pursue further judicial remedies. The taxpayer can file a formal lawsuit against the Board of County Commissioners contesting the classification or can elect to have the dispute decided by binding arbitration. If arbitration is selected, no other appeal is allowed. If a formal litigation is pursued, the case is set for trial to a judge. The judge's ruling can be further appealed in accordance with Colorado law to appellate courts.

***NOTE:** This report was paid for by RMLA. An example of your dues working for you.*

MODEL FOR "LLAMA-TIZE, NOT TRAUMATIZE YOUR HORSE" PRESENTATION (con't from page 15.)

9. Leave plenty of time to allow the horses to become familiar with llamas. It's a good idea to have the llamas wearing a loaded pack so they look like they would in a back country encounter. Have someone with the llamas at all time. You may want to have the initial meeting across a fence. Keep the horses apart to avoid a chain reaction, should one decide to spook. As the horse calms, you may want to stand with your llama and allow riders to approach. Be sure all encounters take place within a secure, fenced area. Make sure you have lots of space to accommodate the animals' needs.
10. Take this opportunity to get to know the horse people. Identify their concerns and see where you have common ground. Perhaps you may learn

- more about area trails and campsites. Find out if you have any common issues relating to back country use in your National Forest or Park and don't overlook an opportunity to work together to solve problems.
11. If you're confident that you can sponsor a successful event, you may want to invite the media. Don't overlook an opportunity for good public relations and promoting llamas!
12. Individual llama owners may want to consider offering one of their herd as a "loaner llama" to keep close to horses for a weekend. The presentation would offer a good opportunity for llama and horse people to get to know each other and talk about loaner llama possibilities.

Keeping Current

Ideas for Successful Marketing to the Llama and Alpaca Industries

Those llama/alpaca breeders receiving *Keeping Current* are very special people who want to be informed — and want to be fully in control in this increasingly complex marketplace. As a subscriber you will have, right at your fingertips, a wealth of inside information that can make you shrewder, happier ... and richer too. Here are what readers are saying about *Keeping Current*:

"Easy to read ... content is good ... useful ideas"

— Peter Illyn, ILA Public Relations & Marketing Manger

"Excellent ... great ... very informative reading for anyone involved with llamas"

— Tom Simmons, Celebrity & Celebration Llama Sales

To keep current with the trends in today's competitive marketplace and what people are doing to market their llamas/alpacas in different parts of the country, subscribe to *Keeping Current*. The annual subscription fee of \$24.00 includes four issues of the newsletter (one each quarter) plus two special reports, one of which will be the annual *State of the Market* report. The subscription offer comes with a **full money-back guarantee**.

Write HL Press at 4480 Pioneer Road, Medford, Oregon 97501 or call Dan or Marilyn Milton at (503)535-3299 to begin receiving *Keeping Current*. Send no money — you will be billed with the first issue.

NEW RATES FOR ADVERTISING

DISPLAY ADS:

Full Page: 9" X 6-1/2"	\$65.00
Full Page inside Cover	\$80.00
1/2 Page: 4-1/2" X 6-1/2"	\$40.00
1/2 Page Back Cover	\$50.00
1/2 Page: (Back cover with two color)	\$115.00
1/4 Page: 4-1/2" X 3-1/4"	\$20.00

10% Discount for 3 Consecutive Issues for Same Display Ad!

Business Card: 2" X 3-1/2"	\$10.00
----------------------------------	---------

All Display Ads must be camera-ready.

CLASSIFIED ADS:

Member Classified (50 words):	\$5.00
(For more than 50 words-15¢ per word)	
Non-member Classified:	\$10.00
(For more than 50 words-15¢ per word)	

All classified ads and articles must be typed double-spaced!

**Please mail all ads
and typed articles to:**

(Please do not send a FAX.)

**Jo Riley
Post Office Box 1189
1612 Spring Gulch Dr.
Lyons, CO 80540
303-823-5409**

*Send articles that
need to be typed to
Anne Kirby*

**Please make checks
payable to RMLA.**

Deadline for next issue is April 9th.

We ♥ llamas and you can too!

One of Colorado's largest llama breeders has the llama for you. Come and look over 50 quality llamas. We are located on 57 beautiful acres next to the National Forest between Boulder and Estes Park.

- | | |
|--|---|
| <input checked="" type="checkbox"/> Conformation | <input checked="" type="checkbox"/> Banana Ears |
| <input checked="" type="checkbox"/> Large Bone | <input checked="" type="checkbox"/> Wooly Faces |
| <input checked="" type="checkbox"/> Ranch Guarantees | <input checked="" type="checkbox"/> Trainer Packers |

Buy one of our girls and use the stud of your choice at no charge with **guaranteed female birth.**

Call Bob or Jo Riley for free pamphlet or directions.
Cappuccino is always ready!

Boulder Ridge Ranch

303.823.5409

1612 Spring Gulch Drive • Post Office Box 1189
Lyons, Colorado 80540



**DEADLINES FOR NEWSLETTER:
APRIL 9, JUNE 11, AND AUGUST 13**

Rocky Mountain Llama and Alpaca Association

593 19-3/4 Road
Grand Junction, Colorado 81503

Address Correction Requested



Bob & Barbara Hance
HANCE RANCH
11818 W. 52nd Ave
Wheat Ridge, CO 80033-2032

Dated Material
Do Not Delay In Delivery, Please!