

ROCKY MOUNTAIN LLAMA AND ALPACA ASSOCIATION

CALENDAR OF EVENTS

September 17-19: Gold Rush '92, just north of Denver

The first Annual Rocky Mountain Alpaca Sale and Llama Sale, Adams County Regional Park Complex. Call Eleanor Palmisano, 303-242-8759. Ad on pg. 7.

September 23 in the Morning: RMLA Board Meeting, Denver area

The next meeting of the Board of Directors will be held in the Denver area. All members are encouraged to attend. If you would like more details, please call Dee Goodman, our new President. His number is 303-345-2927.

October 8-11: Canadian Llama Association 5th Annual Conference

The Conference to be held at the Pacific Inn, White Rock, British Columbia. Featuring Dr. Murray Fowler, Dr. William Franklin, Kay Patterson, Marty McGee, Betty Barkman, Tom Chamlee and Gretchen Quigg and others. Clinics. For information and registration package contact Pat Hilton, 604-533-2328. See article on page 13.

October 16-17: Georgia National Fair, Perry, Georgia

All llama owners are requested to participate again this year. Halter Classes, Performance Classes - ribbons and cash prizes to be awarded. Bar-B-Que for all participants. Tracy and Jack Pearson, 706-276-3658.

October 17-18: New Mexico Llama Show, Corrales, NM

ALSA sanctioned Halter and Performance show. For more information, please call Lisa Coward, 505-471-1731.

January 18-20: National Western Llama Show, Denver, Colorado

Halter and Performance Classes. For more information and details, call Grace Shaddeau, 303-279-4896. See article and schedule on pages 14 & 15.

INSIDE THIS ISSUE:

- | | |
|-----------------------------|---------------------------|
| ■ Tax Law, p. 4 | ■ Library Notes, p. 9 |
| ■ President's Message, p. 3 | ■ Camp Quality, p. 13 |
| ■ Fairplay Race, pp. 8-10 | ■ National Western, p. 14 |

▷ 18



TMX ▷ 19

CAMACHO CHIEF 59828

TMX ▷ 14



INDIAN PEAKS RANCH
 45640 Hwy. 72, Ward, CO 80481
Breedings and Offspring Available
For Video or Portfolio:
 303-459-3245



TMX ▷ 20

CAMACHO CHIEF 59828

TMX ▷ 15



TMX ▷ 21

CAMACHO C

TMX ▷ 16



PRESIDENT'S MESSAGE

By Dee Goodman

Greetings from your new President (sounds like a draft notice, doesn't it). As I start my term as your President, I realize I have a tough act to follow looking back at all the GREAT Presidents RMLA has had. As I look forward, I also realize we have a lot of work to do and some tough decisions to make like the "93" Conference. Some of the projects for the year:

1. To continue to market RMLA and show how great this Association is. To continue educating our member and the public on llamas especially through our events, our library and also through the newsletter.
2. Help our youth get started with llamas either through 4-H or by whatever means it takes. The youth are our future!
3. To get the search and rescue llama cart done. (The prototype was shown in Sheridan at the Conference.) This cart will be used to help search and rescue groups use llamas to carry in emergency equipment for back country rescues and help carry out victims.
4. To address our member's insurance needs not only from RMLA events but also for RMLA members on their personal needs like health, life, farm and other insurance concerns at group rates. We hope to have this in place by November.
5. Help other states pass llama liability laws like Colorado.

1993 CONFERENCE

One of our toughest decisions for the year is when and where the "93" Conference will be held. Please either call me or send a card with your opinion. We need

to hear from everyone. The 3 choices are:

1. ILA will be having their Conference in Snowmass, Colorado on June 16-19, 1993. ILA has invited RMLA to join them at their Conference. RMLA would have a complimentary booth space and space for the library. RMLA also could hold our business meeting during the Conference. Cost would be around \$225 for ILA members or \$275 for nonmembers (This includes most meals).
2. Have our own Conference in September.
3. Just have a Business Meeting somewhere as required by the bylaws.

Please contact me (303-345-2927 or send a card, address is on back of newsletter) and let me know what you want to do (I do have an answering machine!):

Please vote for: 1 or 2 or 3!

RMLA MEMBERS WILL DECIDE THIS!

VOLUNTEER

My last comment (thank goodness) is about you volunteering your time for RMLA. I know its getting tougher to come up with that "I" word but please try. Volunteer for a committee, or an event, or write an article for the newsletter. If you have a idea for RMLA, please call a board member about it. If you have a problem or complaint, CALL ME!

This ends my first letter (I bet you're happy). So keep smiling and humming down that llama trail!

Always,

Dee

TAKING ADVANTAGE OF THE NEW LIABILITY LIMITATIONS FOR LLAMA ACTIVITIES

by Mary Ewing, Bucholtz, Bull & Ewing, P.C.

Thanks to a new law, C.R.S. S 13-21--119 (as amended 1992), amending the Equine Liability Act to include llamas, there are now available significant limitations upon the potential liability until now associated with llama activities. These limits are available not only to any "llama activity sponsor" or "llama professional" as defined in the law, but also other persons involved with llamas.

COVERED PARTIES

- A "llama activity sponsor" includes "an individual, group, club, partnership or corporation," whether it operates for profit or not, "which sponsors, organizes, or provides the facilities for, a llama activity. ..."
- A "llama professional" is "a person engaged for compensation . . . in instructing a participant or renting to a participant a llama for the purpose of riding, driving, or being a passenger upon the llama; or ... [i]n renting equipment or tack to a participant."
- A "llama" is defined as a South American camelid of the genus llama and includes llamas, alpacas, guanacos, and vicunas.
- In addition to the immunity granted to llama professionals and llama activity sponsors, the law extends its protection to "any other person."

SIGNAGE REQUIREMENTS

In order to take advantage of the protection provided by the statute, a llama professional must post and maintain a specified warning sign in a clearly visible location on or near stables, corrals, pens, or arenas where llama activity is conducted, if the stables, corrals, pens, or arenas are owned, managed or controlled by the llama profes-

sional. The law specifies that the sign shall contain the following notice in clearly readable black letters a minimum of one-inch in height:

WARNING

Under Colorado Law, a llama professional is not liable for an injury to or the death of a participant in llama activities resulting from the inherent risks of llama activities, pursuant to section S 13-21-119, Colorado Revised Statutes.

CONTRACT REQUIREMENTS

In addition to the signage requirements, if written contracts are used by a llama professional for the providing of professional services, instruction or the rental of equipment or tack or a llama to a participant, the contracts are also required to contain the above warning language.

LIABILITY LIMITATIONS

Subject to certain exclusions, the law provides that "a llama activity sponsor or llama professional, or any other person, which shall include a corporation or partnership", shall not be liable for injury to or the death of a participant resulting from the inherent risks of llama activities. "Inherent risks of llama activities" means those dangers or conditions which are an integral part of llama activities and includes:

- The propensity of the animal to behave in ways that may result in injury, harm, or death to persons on or around them;
- The unpredictability of the animal's reaction to such things as sounds, sudden movement, and unfamiliar objects, persons, or other animals;
- Certain hazards such as surface and subsurface conditions;

TAKING ADVANTAGE OF THE NEW LIABILITY (CONT')

- collisions with (other animal or objects; and
- The potential of a participant to act in a negligent manner that may contribute to injury to the participant or others, such as failing to maintain control over the animal or not acting within his or her ability.

EXCLUSIONS.

The protections offered by the law do not apply to persons who:

- Provide equipment or tack and knew or should have known that the equipment or tack was faulty, and such equipment or tack was faulty to the extent that it did cause the injury;
- Provide the animal and fail to make reasonable and prudent efforts to determine the ability of the participant to engage safely in the llama activity, and determine the ability of the participant to safely manage the particular animal based on the participant's representations of his ability;
- Own or control land or facilities upon which a participant was injured because of a dangerous latent condition which was known [to the party] and for which warning signs have not been conspicuously posted;
- Commit an act or omission that constitutes willful or wanton disregard for the safety of the participant, and that act or omission caused the injury; or,
- Intentionally injure the participant.

LLAMA ACTIVITY

The definition of "llama activity" is quite broad. It includes llama shows, fairs, competitions, performances, or parades that involve all breeds of llamas. It includes using llamas to pull carts, to carry packs, to pull travois-type carriers for rescue or

emergency situations, llama training or teaching activities, taking llamas to nursing homes and other public relations trips, commercial packing trips, boarding llamas, riding, evaluating or inspecting a llama, using llamas for wool inspection, any type of activity using a llama for an activity sponsored by a llama activity sponsor, and trimming the nails of a llama.

"Engages in a llama activity" means "riding, training, assisting in medical treatment of, driving, or being a passenger upon a llama, whether mounted or unmounted or any person assisting a participant or show management." It does not include "being a spectator at a llama activity, except in cases where the spectator places himself in an unauthorized area and in immediate proximity to the llama activity.

STRICT COMPLIANCE NECESSARY

Because this law is contrary to established common law, its protection may be available only if the requirements of the statute are complied with strictly. The signage and contract language provisions of the law are addressed specifically to llama professionals; accordingly, there seems to be an ambiguity as to whether others engaged in llama activities are required to comply with the warning requirements. The law excludes from immunity those persons who own or control land which does not have conspicuously posted warning signs if a participant is injured because of a known dangerous, latent condition. Because of that provision in the law, it is recommended that ALL persons involved with llamas post warning signs. Warning signs should be posted in sufficient locations so that one cannot come into contact with a llama without having first seen a posted warning sign. Following the same reasoning, contracts should be modified to contain the warning language.

TAKING ADVANTAGE OF THE NEW LIABILITY (CONT)

GAPS IN THE LAW

The law does not specifically address the situation in which complying warning signs are not posted or the situation in which a contract fails to contain warning language. One interpretation of the law is that the immunity fails absent the warnings. Another interpretation is that a separate cause of action may be created for "failure to warn." Most worrisome is the fear that the Supreme Court of Colorado will deem the law vague and ambiguous and therefore unconstitutional and unenforceable.

The law also fails to address the situation in which the participant makes a frank representation of a lack of knowledge and experience with llamas. Nevertheless, the person providing the llama provides a dangerous animal and the participant is injured. Is the llama provider legally responsible for the participant's injuries or does the immunity of the law cover this situation? Until the Court of Appeals or Supreme Court addresses this question, the answer will not be known.

The protection of the law does not apply to persons providing "faulty" tack or equipment that causes injury. The law does not define what constitutes "faulty." Presumably, one could be held legally responsible for an injury resulting not only from a rotten or broken girth or other piece of equipment, but also for tack which is ill-fitting or poorly adjusted and, therefore, "faulty."

The law excludes from immunity intentional acts and acts constituting a willful and wanton disregard for safety. Generally, if an injured person claims the wrongful act was "willful and wanton," a trial court may ask a jury to determine whether the allegedly wrongful act was simply a negligent act or a willful and wanton or intentional act. An even more worrisome problem arises when an act is claimed to be willful and wanton or intentional; most insurance policies exclude from coverage claims arising as a result of such acts.

This article contains only a general description of the requirements of the law. Each person involved in llama activities is strongly encouraged to consult with legal counsel regarding the full scope and detailed requirements of the law and to have all operations and contracts reviewed by legal counsel.

Liability Signs for Sale

The Colorado Llama Law signs are \$12.36 for members and \$14.42 for non-members (tax and shipping included). Send check (payable to RMLA) with name, address, and phone to: Dee Goodman, 41930 County Road AA, Akron, CO 80720, 303-345-2927. A lovely blue order blank was in the middle of the July Newsletter.



"The Home of Quality Llamas"

Luanne "Lu" Williams
303-838-5389

13546 Wamblee Trail
Conifer, CO 80433

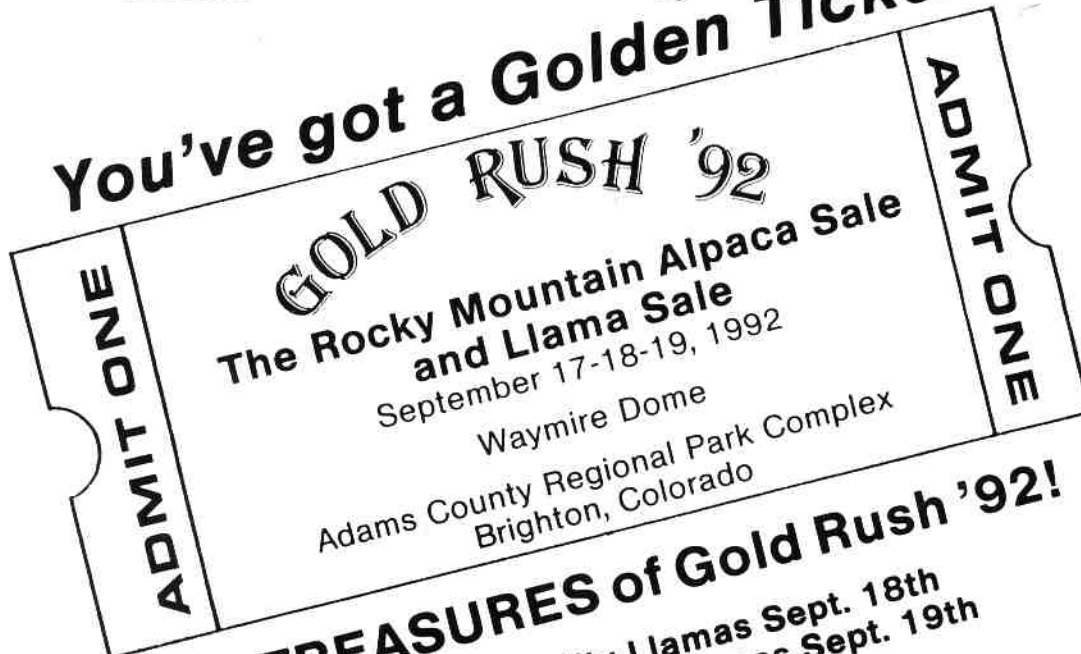
Timberline Llamas, Inc.

* pack trips * breeding * sales *

Wes and Mary Mauz
30361 Rainbow Hills Rd.
Golden, CO 80401
(303) 526-0092



You've got a Golden Ticket...



To The TREASURES of Gold Rush '92!

- Selling up to 100 quality Llamas Sept. 18th
- Selling up to 50 excellent Alpacas Sept. 19th
- Beautiful Facilities
- Llama/Alpaca items for sale
- Exciting Entertainment
- Superb food by Culinary Artistry and the Sheraton
- Ideal location - minutes from Downtown Denver!

HOST HOTEL: Sheraton Graystone Castle
(Special Gold Rush '92 rates - 303/451-1002)

For information call Frank & Eleanor Palmisano - 303/242-8759
Living Art, Inc. - 2309 J Road - Grand Junction, CO 81505

A FAMILY'S TALE OF THE FAIRPLAY RACE

by Jo Riley

It's the end of July so our family heads to Fairplay, Colorado to participate in the Fairplay Llama Pack Race. This is our 3rd year for at least one of us to enter.

Unfortunately, it was raining when we arrived in Fairplay so my plans of shopping were changed. We headed straight up to the Llama Camp so we could settle in for the night. It was a long road which ended in a most beautiful setting. Bob is looking forward to returning and enjoy the setting again for a weekend.

There were about 10 groups and room for many more. We feel people should consider making the Llama Camp part of the outing for the race. There were all types of campers from tents to motor-homes. If you know Bob, you know we were in the motor home. He isn't worth anything without his hot shower in the morning! If I had been concerned about the physical health of my runners, I would have fixed pasta like I did for years when Bob ran regular types of races. I considered this a campout instead so we char-coaled steaks! Next year, I might reconsider that decision.

Some of the campers arrived after dark. Dee Goodman and his family were among them. He had been working hard in Fairplay setting up the race course. In the morning, the Goodmans were the first to leave.

Instead of cooking a healthy breakfast, we went into Fairplay and ate at the hotel. After the steaks the night before, I figured a little grease couldn't hurt.

The rain continued to threatened but held off until after the race was complete.

Before the race Dr. LaRue Johnson and his team of cohorts took vital information

on the llamas. They repeated this procedure after the race. I will have to admit, our llamas were not happy to see them return.

There were several changes this year. Sally German, our Past President, was the race announcer. She introduced all racers individually as they walked to the far end of the street to begin the race. She used their nicknames as part of the introductions. This caused problems as she referred to one of my sons as "Stud." My other son, who has always considered himself as the "ladies man", was most put out. Life has not been easy with three good looking boys in the family.

Dee Goodman was in charge of setting up the course. He decided to make it very challenging this year. Taking a llama through the water in the past was always one of the trickier times in the race. This year Dee must have followed a trout when setting up the course because the course crossed the water 11 times! To make matters worse, Fairplay had received lots of rain so the water was higher than usual.

The Fairplay race is fun because all types of runners can enter and enjoy the race. There are the types of runners who spend lots of time training the llamas for the run. Some ranches even talk a track star into the race. Some of the runners fall into the categories of my son, Brad. He has won his age group the past 2 years. He knew the competition would be stiffer this year and should have trained his llama. (In the past, he had used one of Sally German's llamas.) With kids knowing and doing are sometimes two different things. Basically he was too lazy to train. He ran with my favorite spoiled llama who did not cooperate very well. Brad came in

A FAMILY'S TALE OF THE FAIRPLAY RACE (Con't)

second! Bob, my husband, is the typical runner who just want to participate and doesn't care about the finishing time. He, too, should have trained his llama. For the past two years, he has literally pulled a llama around the course! My son, Scott, basically was like Bob. His main goal was to survive! It is called a race but to some people it is a walk.

Next year Dee Goodman is considering having different divisions for different types of runners. We will keep you informed off all changes for the coming year. As you can tell, I have not mentioned my participation in the race. As much as I wanted to run, someone had to take pictures. I gave up my shot of stardom for the sake of history!

RMLA LIBRARY NOTES

by Chris Switzer

The library was on full display at the conference. It's been 5 years since it was started and now there are 150 different items! There are 2nd copies of many videos plus a number of books (articles-25; children's-25; books-38; videos-22; wool-26 and miscellaneous-13).

Write or call with your request. Checkouts are through the mail-except for hand carried from the conference. I will mail to you and you mail back. Checkouts are for 1 month except for videos whcih are 2

weeks. Budget comes from RMLA plus donations.

NEW:

Video- "Llamas are Fun"

"Camelid Kids" ILA Newsletter-Spring '92 for children

Image of a Well Trained Llama (revised edition) by Paul and Betty Barkman

"Archaeology Makes Edible Impact" (Article form Christian Science Monitor, Ocotber 1991.

GOLDEN
RIDGE



LLAMAS

Mark Fisher

Golden Ridge Llamas, Inc.
15 Pinecrest Circle
Bailey, Colorado 80421
(303) 838-9702

VOLUNTEERS

RMLA needs volunteers for
the following committees:

**Finance • Wool
Herdsire • Education
4-H Youth • Marketing
Membership
Sponsored Events**

*If you would like to work on one
of the committees, please call or
write Dee Goodman, 41930
County Road AA, Akron, CO
80420, 303-345-2927.*

MORRIS LLAMAS

Dale and Vicki Morris
P.O. Box 848 • Florissant, CO 80816
(719) 748-3590

Banana Belt Ranch



Quality Breeds Quality

Quality llamas for sale - Stud Service
Domestic & Imported Bloodlines.
All our llamas are registered,
4-way tested, TTEAM trained
and guaranteed.
Reasonable prices & delivery.
Visitors Welcome.

10TH ANNUAL FAIRPLAY PACK LLAMA RACE

Name	Age	Llama	Owner	Time
------	-----	-------	-------	------

MENS RACE

OVERALL WINNER

Tim Figge	29	Homer	High Line Llamas	25:28
-----------	----	-------	------------------	-------

MENS 15-24

1st Shanne Haynes	17	Say Doh	Stage Stop Llamas	35:45
2nd Brad Riley	20	Pair of Dice	Boulder Ridge Llamas	36:06
3rd Andrew Lightner	21	Ourray	Bill Redwood	38:17

MENS 25-34

1st Tim Figge	29	Homer	High Line Llamas	25:28
2nd Mark Pommier	29	Clancey	Bill Redwood	25:44
3rd Mike Dotseth	29	Kip	High Line Llamas	26:07

MENS 35-44

1st Richard Kimball	43	George	Bill Redwood	28:49
2nd Stan Ebel	43	Capt. Pollerd	Buckhorn Llamas	29:10
3rd Bruce Wollens	37	Totavi Mt.	Liza Cowards	33:28

MENS 45-55

1st Charlie Nak	45	Coca Cola	Red Nak Llamas	32:01
2nd Ken Chlouber	53	Flannigan	XI Llamas	37:55
3rd Rob Ferris	49	Chuz	Tumble Creek Ranch	55:26

MENS 55+

1st LaRue Johnson	56	Nutella	Chamba Sheep/Llamas	44:58
-------------------	----	---------	---------------------	-------

WOMENS RACE

OVERALL WINNER

Brita Kraabel	25	Indy	CSU	35:56
---------------	----	------	-----	-------

WOMENS 15-24

1st Tara Robinson	16	Cunis	Robinson of Divide	36:13
2nd Jamie Graz	15	Mandella	Tumble Creek Llamas	55:27

WOMENS 25-34

1st Brita Kraabel	25	Indy	CSU	35:56
2nd Johanna Anderson	29	Al	Red Nak Llamas	44:41

WOMENS 35-44

1st Connie Crotty	39	Rt. Mt. High Bron	Red Nak Llamas	44:38
2nd Mary Jo Robinson	40	Banbi	Robinsons of Divide	50:36
3rd Lori White	36		Stage Stop Llamas	59:26

WOMENS 45-54

1st Vicki Cole	45	ElDorado	Boulder Ridge Llamas	46:11
2nd Pat Chlouber	53	Ruedi	XI Llamas	57:27

LETTER FROM THE AMERICAN SOCIETY

Dear Dee and Karla;

Where do I begin? What a fantastic job you did organizing and conducting the race. We had a fantastic time, truly beyond words. We can't wait for next year.

On behalf of the Colorado Division of the American Cancer Society, I am writing to express our thanks to you and to the Rocky Mountain Llama and Alpaca Association for all you do for cancer patients and their families. Having had a child who died of liver cancer I can say first hand what it means not only to the child but to the families to have a group like yours give so much to brighten a day in their lives. We are very grateful.

I have written letters of thanks to all the participants, please count this as yours, and as soon as I receive all the sponsor/pledge money I will let you know the final income. (*Dee thinks it will be \$1,000.00*)

There was an article in the Denver Post about the race. It had a picture of Russ Logan's son. I sent them a copy. I was thrilled to see that they used that photo.

Now, about next year! I do hope that RMLA will include the American Cancer Society again next year. Now that I have been there and experienced it first hand I will be able to promote it with enthusiasm to match yours! As a team RMLA and the A.C.S. will be able to make the 11th Annual Fairplay Llama Pack Race even bigger and better (if better is possible)!

Again, thank you for all you did to make this event so successful. It was the most fun we have had in a very long time. Please pass on our thanks and appreciation to the members of RMLA.

Sincerely,

Jeanne

(This was edited for space considerations.)

NEW NEWSLETTER ADVERTISING INFORMATION

DISPLAY ADS:

Full Page: 9" X 6-1/2"	\$65.00
Full Page inside Cover	\$80.00
1/2 Page: 4-1/2" X 6-1/2"	\$40.00
1/4 Page: 4-1/2" X 3-1/4"	\$20.00

NEW . . . 10% Discount for 3 Consecutive Issues on Display Ads!

Business

Card: 2" X 3-1/2"	\$10.00
<i>(Anything larger qualifies as a Display Ad above.)</i>	

Call for ad information sheet.

All Display Ads must be camera-ready.

Member Classified: Free
(Limit of 2 can be listed each issue)

Non-member Classified: \$5.00

(All classified ads are limited to 50 words)

*All classified ads and articles must be typed double-spaced and
classified ads are limited to 50 words!*

**Please mail all ads
and typed articles to:**

*(A good ribbon makes all
the difference!)*

**Jo Riley
Post Office Box 1189
Lyons, CO 80540
303-823-5409**

***Send articles that
need to be typed to***

Anne Kirby

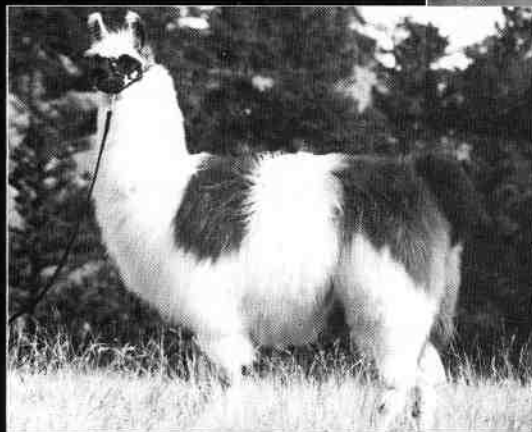
*Please make checks
payable to RMLA.*

Deadline for next issue is October 9th.

★ MC Hammer

Too Legit To Quit!

★ Seven-time
GRAND
CHAMPION including
1992 National Western
Stock Show, 1992 Fort
Worth Stock Show, and
1992 Estes Park Wool
Market.



The Ambassador x T. Y. Button



U Can Touch This!

- ★ Breeding Fee: \$1000
- ★ Multiple Breeding Discount
- ★ Live Birth Guarantee



EASTWARD
L•L•A•M•A•S
IN EDEN

GALE & MARGE ARMSTRONG
5643 E. 2300 N.
EDEN, UTAH 84310
801/745-2297

Overland Trail
llamas

MIKE & DALE PETTIGREW
168 EMERALD MOUNTAIN COURT
LIVERMORE, COLORADO
303/493-2335

CAMP QUALITY

by Judy Sealy

A llama "play-day" was spent at Big Spruce Campground in Cedaredge, Colorado on the Grand Mesa on June 17, 1992, as we once again shared our llamas with kids with cancer and their brothers and sisters. Camp Quality provides a week away from the hospital and therapy for children with the disease. The program was started in Australia ten years ago and has since grown to a world-wide, non-profit, volunteer organization providing a camping experience and a year around support system of caring for children with cancer and their families.

Camp Quality gives the families of these children a much needed rest, knowing that the finest program has been selected to keep their child happy, and, most importantly, assures them that adequate medical supervision is an integral part of every camp plan.

Camp Quality provides the opportunity for children with cancer to be children

again--to have fun, participate in exciting activities and make new friends who identify with their situation. The activities vary according to the camp location, and range from horse-back riding, canoeing, fishing, archery, pottery, swimming and now exclusively in Western Colorado--llama day! A very special thank you to Fred Anders, Fay Earley, Erma & Bernie Hast, Sally German, Rhonda Perich and girls, Leiah Struble and Jim & Dee Daugherty who gave of their time and talents to make "Llama Day" special for "special kids".

Camp Quality now spans six countries and eight states in the U.S. If you would like to help support the Camp Quality Program or are interested in providing a "llama day" on the Front Range of Colorado, there is a special need for you! Please call me for more information and I will be delighted to put you in touch with the Directors of Camp Quality.

CATCH THE SPIRIT

The Spirit of the Llama - the Fifth Annual Canadian Llama Association Conference will be held at the Best Western Pacific Inn, White Rock, British Columbia, Canada, just south of Vancouver, on October 8, 9, 10 and 11, 1992. The Conference will commence on the Thursday evening with a "Spirit Warmer."

An impressive list of speakers are scheduled and include Dr. Murray Fowler, Dr. William Franklin, Kay Patterson, Marty McGee, Betty Barkman, Ellen Leach, Gretchen Quigg and Tom Chamlee and others. Pre- and Post-Conference clinics by Betty Barkman, Marty McGee and Dr. William Franklin will be held on the Thursday, October 8, and Sunday, October 11.

If you are unable to attend the Conference, you may be interested in the Saturday afternoon demonstrations of packing, the fibre room and the marketplace which will be open to the public. Or, you may wish to attend one of the Pre- or Post-Conference clinics on training and animal behavior.

With a fun Photo Contest, Ranch displays, a busy schedule in the Fibre room, animals on display in the Pavilion and unusual vendors in the Marketplace this promises to be an excellent Conference with something for everyone.

For any information or Conference registration forms please contact Pat Hilton at Phone/Fax 604-533-2328 or Jane Pinkerton, 604-856-3196.

NATIONAL WESTERN LLAMA SHOW

ENTRIES CLOSE DECEMBER 1, 1992

- BEGIN ARRIVAL:** Monday, January 18, 1993, 6:00 a.m.
IN PLACE: Monday, January 18, 1993, 12:00 Noon
SHOW: Monday, January 18, 1993, 6:00 p.m.
Wednesday, January 20, 1993, 6:00 p.m.
BEGIN RELEASE: Tuesday, January 19, 1993, 6:00 a.m. of Performance
Llamas
ALL OUT: Thursday, January 21, 1993, 12 Noon

TENTATIVE LLAMA SHOW SCHEDULE

Monday, January 18, 1993

12 Noon All llamas in place - Lower Hall of Education

Monday, January 18, 1993 Stadium Arena

6:00 p.m. Costume
Jr. Obstacle (12 years and under)
Jr. Showmanship (18 years and under)
Llama Fiber
Open Showmanship
Open Obedience
Adult Pack String
Open Pack/Trail

Tuesday, January 19, 1993

6:00 a.m. Begin release of performance llamas

Wednesday, January 20, 1993 Stadium Arena

6:00 p.m. Pleasure Driving
Halter Classes (Heavy Wool, then Light/Medium Wool)
Get-of-Sire

Thursday, January 21, 1993

12 Noon ALL llamas must be out of the stalling area

Entry Fees: All fees must accompany entries, no exceptions.

\$11.00 per animal per class (includes \$1.00 A.L.S.A. fee)

\$8.00 per animal per class for Juniors

(Juniors - 18 years old and under as of 1-1-92).

We need volunteers for the show! Anyone interested in being gate attendants, ribbon presenters, obstacle help, sponsoring a class and donating trophies, or general gofer or

if you need more detailed information, please contact:

Grace Shaddeau, Superintendent

Steve Gaunt, Co-Superintendent

Shadow Ridge Llama Ranch, 8089 Hwy 93, Golden, CO 80403, 303-279-4896

NATIONAL WESTERN LLAMA SHOW (Con't)

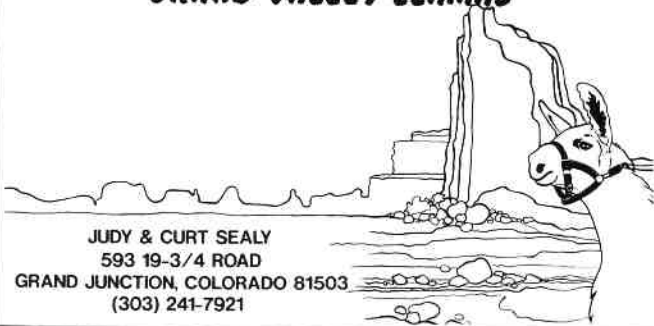
1993 CHANGES

- The **Llama Obedience Class** is a new class and will be an interesting experience for both llamas and handlers. It will be held in a controlled area (30' X 30') in the Stadium Arena. Llamas will be asked to obey simple commands, such as: stop, stand, stay, come, and follow off-lead for a short distance (possibly over a log). There will be a 2-minute 'free' period, where the llama can perform any special accomplishment.

The purpose of this class is to promote closer interaction between handler and llama, increase marketability, show ease of handling, and challenge the llama's superior intelligence. If this class is successful, it should increase our llama sales to the general public significantly.

- There will be no Mother/Baby or My Llama Project Classes this year.
- If you want your business card printed in the Llama Show Program, send your business card with \$20.00 to Shadow Ridge Llama Ranch, 8089 Hwy 93, Golden, CO 80403 by January 1, 1993. *DO NOT SEND CARD OR MONEY TO NWSS.*

GRAND VALLEY LLAMAS



JUDY & CURT SEALY
593 19-3/4 ROAD
GRAND JUNCTION, COLORADO 81503
(303) 241-7921



Castle Llamas

MONTE & CAROL BALLEW

13075 Rist Canyon Rd.
Bellvue, CO
80512

303 / 484-3537

MEMBERSHIP INFORMATION

Why not give a membership with each llama you sell and start off the family right!

Membership year runs from January 1 through December 31

Adult Individual Membership: \$30.00 (One vote, newsletter, directory entry)

Farm or Ranch Membership: \$50.00 (Couple or two individuals associated with one business; two votes, newsletter, directory entry)

Junior Membership: \$10.00 (18 or under; no vote, receives newsletter and 75% reduction in conference/show fees, must have adult member sponsor.)

RMLA also provides an extensive lending library of books and videos to members.

For further information please contact:
Judy Sealy, Secretary · 593 19-3/4 Road
Grand Junction, CO 81503 · 303-241-7921

CLASSIFIED ADS

LAMASHERD(tm)SOFTWARE System for efficient management of llama/alpaca herds, detailed animal, breeding, health, show, owner information. Pedigree, progeny charts. Many reports: Herd Inventory, Breeding/Health Treatment Calendars, Breeding/Health/Show History, more. Fast, efficient data entry. Requires IBM/DOS compatible computer. \$200-\$350. SWCS, 65711 Twin Bridges, Bend, OR 97701, 503-389-1913.

INTERESTED IN BUYING, SELLING, TRAINING, OR JUST PLAIN ENJOYING LLAMAS? Our books and videotapes have been helping people to do all this and more since 1984. Juniper Ridge Press, Box 338-R, Ashland, Oregon 97520. Call us at 800-869-7342 for a FREE catalog.

USEFUL LLAMA ITEMS: Offering items particularly useful on the llama farm/home. Kiwi gate latches, halters, lead ropes, nail clippers, packs, scales, tie straps, carts, record forms, fly control, etc. Llamas of Michigan, 3540 76th Street, Caledonia, Michigan 49316, 800-63L-LAMA.

RANCH & STALL BANNERS, Custom made. My design or yours. Various fabrics & textures. Flat or quilted (heavy or light) \$5-\$20 per sq.ft. plus material. No job too big or too small. Plan now for this fall and next spring's shows. Limited number made per season. Call or write Nancy, Valley View Ranch, 13333 County Road #1, Ridgway, Colorado 81432, 303-626-5700.

HAVE YOU READ STANLYNN DAUGHERTY'S PACKING WITH LLAMAS? It's crammed with information on all aspects of packing: how to select a pack llama, training, care and feeding, training, hitting the trail, in camp, backcountry recipes, and more. \$13.95 postpaid from Juniper Ridge Press, Box 338-R, Ashland, OR 97520 or 800-869-7342.

LLAMA HANDLING AND TRAINING: the TTeam Approach by Marty McGee. Detailed explanations and illustrations of methods for working with your llamas without force. \$26.75 ppd. Gentle grooming brush, \$12. ppd. Video: "Basic TTEAM with Llamas" by Marty McGee, \$67.50 ppd. Halters. Pettigrew, 168 Emerald Mtn. Court, Livermore, CO 80536, 303-493-2335.

KEEP YOUR LLAMA COOL with LaLlama mister. Fine spray mist of water (1 gal/Hr/Mister) cools your llamas without soaking them or creating mud. Solar powered and thermostat controlled. Set temperature dial and unit turns itself on and off. Easy installation only requires garden hose. Llamas will love it. \$149.00 Rancho Cria Llamas, 714-728-0686.

GOT A LLAMA THAT'S HARD TO HALTER? Can't pick up its feet? Hates to be groomed? Won't load easily? or you're behind in training your weanlings? Training for your llamas and you with TTEAM techniques at your place or ours. Contact Dale Pettigrew, Overland Trail Llamas, Livermore, CO 303-493-2335.

HERDSIRE ADS

UNCLE SAM, SON OF *LW WILLIE K, our half-Bolivian herdsire is taking appointments! Introductory fees will be offered through fall with a live birth guarantee. His first crias are girls! Please call for videos and/or photographs. Judy Sealy, GRAND VALLEY LLAMAS, 303-241-7921.

INDIAN PEAKS RANCH offers Championship long wool, medium wool, and performance Stud Services to Camacho Chief, Yukon or Windfall. Tiered pricing, discounts and guarantees (starting at \$1,000). Brochures, portfolios, videos on request. Also on all-aluminum Llama Trailers and accurate External Ultrasound units. Call Alaine or Tim at 303-459-3245.

STUD FOR SALE: Experienced and proven stud. Gentle disposition (a real ladies man). He has thrown good bone and confirmation, and good silky wool. You can buy the gentleman for \$1,500. Call Bob or Jo at 800-255-0357. Boulder Ridge Ranch, Lyons, Colorado.

CHAMPION KAHURA UYU TABERNASH has been purchased by Plum Valley Llamas. He will serve the needs of your female herd, your place or ours. His intelligence, strength, conformation and gentle disposition will be well-received. He will appreciate the employment opportunity. "Tab" can be reached at 303-688-5445; 9122 or FAX 688-6814.

FOR SALE

ONE BEAUTIFUL REGISTERED BLACK AND WHITE MALE. A proven breeder 7 years old. He is a son of Cyclone. Earl Bosley, Post Office Box 596, Dighton, KS 67839, 316-397-5944.

HAY, HAY, HAY! Sometimes you get what you pay for, sometimes you get more. We have first cutting grass-alfalfa, and alfalfa 16x18 inch bales that average 70 lbs., barn stored, analyzed for protein, calcium, phosphorus, selenium and carotene. Second cutting just finished. Available for \$75/ton in Silt or \$4.00/bale delivered. Call Wes Mauz at 303-526-0092.

GRAND VALLEY LLAMAS have female weanlings and bred females for sale. Breedings to Alumbardo, our full Chilean, Uncle Sam, our half-Bolivian or Crackerjack included. Call Judy Sealy for more information, 303-241-7921.

LEN HENNIG SELLS NICE LLAMAS. Pecos(M) 13 mos (Grand Sire-Conception), very colorful Appaloosa. Night Train (M) 15 mos (Errol Flynn line), solid, straight Seal Bay. Tina Turner(F) 3 mos (Errol Flynn line), Seal Bay, white face markings and, yes, Fabulous Legs!, available Oct-Nov 92. Burning Mountain Llamas 303-625-3611. Rifle, CO.

SOLD OUR RANCH! MUST LIQUIDATE OUR LLAMA HERD! 14 Females from \$3000; 8 Packers @ \$500.00 each; 2 trained geldings with 4 wheel wagon and harnesses \$2500.00; 3 herd Sires - Picaro, son of Gandy Dancer, Hiram, NWSS blue ribbon champion; and Abraham. All registered and microchipped. DeColores Llama Ranch, 303-484-5087.

FEMALES FROM OUR 10 YEAR OLD HERD: bred ladies with plenty of experience starting at \$6,000, weanlings from \$4,000. All from excellent healthy dams and sires, domestic blood lines, various colors, registered. Will consider trading for other females. Frye Llamas, 303-726-5346.

RED, SEAL-POINT MALE trained to halter, light pack, obstacle and tether line. 2 year old, gentle disposition suitable for 4-H and PR. Beautiful fleece with guard hair is easy to clean. Doolittle and R.M. Handsome pedigree. \$1,000. Frye Llamas, 303-726-5346.

LIKE TO BARTER? Yearning for a life with llamas but lack of cash makes the dream seem impossible? Perhaps you have marketable goods or services and would like to do some "llama trading." Our llamas are known for conformation, looks and manageability. Reasonable pricing, financing and barter system can make your dream come true. Castle Llamas, 303-484-3537.

CHOICES GALORE! Weanling, yearlings or bred females only \$6500- \$8500. Will finance. Sired by Cinco de Mayo, Gandy Dancer, GLD Bogata, Sgt. Alfredo. All colors. Guaranteed. Stud service included, (home of MC Hammer). TTEAM trained. Delivery available. Overland Trail Llamas. Livermore, CO, 303-493-2335.

INDIAN PEAKS RANCH continues to be at the leading edge of the Colorado llama industry by offering sound, large framed and densely fleeced males, females and bred females from a twelve year old breeding program. Come and "Take a Peak" at what you've been missing. Call Alaine at 303-459-3245. 30 minutes from Boulder.

PHANTOM OF THE OPERA (M) 8 mos (Macho Camacho/Doolittle lines) Mostly white, dilute paint with tri-color cheeks and distinctive half mask, great ears and straight as they come! Will be TEAM trained. Burning Mountain Llamas. 303-625-3611. Rifle, CO.

TIMBERLINE LLAMAS has weanling, yearling and pregnant females for sale as well as a few young males. All are well conformed, registered and micro-chip implanted. Female prices start at \$5,000 and males at \$600. Stop in when you are in the area or call 303-526-0092.

YOUNG FEMALES

Young females for sale starting at \$3,900. Good backgrounds, interesting colors, sweet dispositions from an old line quality breeder. Price includes delivery and stud fee. Boulder Ridge Ranch, Bob Riley, 303-823-5409.

BURNING MOUNTAIN LLAMAS



Len Hennig
(303) 625-3611

0187 Road 251
Rifle, CO 81650

NEW MEMBERS AND RENEWALS

Jean Lauderdale
 HC 62, Box 3117
 Thoreau, NM 87323-9504
 505-862-7116

Susie Buchanan
 60 Via Oreada
 Corrales, NM 87048
 505-898-8131

Jim Valentine
 20358 Granite Circle
 Morrison, CO 80465
 303-697-1720

Rita McClain
 15180 W. Coachman
 Colorado Springs, CO
 80908-2202
 719-495-3553

Matt Tarpy (JR. MEMBER)
 2115 Meyers Ave.
 Colorado Springs, CO 80909
 719-578-0774

Cathy Irwin
 11405 Billings Ave.
 Lafayette, CO 80026
 303-828-3875

Lougene Baird, 303-688-5445
 Radene Showalter, 303-688-9122
 PLUM VALLEY LLAMAS
 2210 Pinewood Rd.
 Sedalia, CO 80135-8444

John Stout
 P.O. Box 64
 Glade Park, CO 81523
 303-245-1162

Jeri Sweet, DVM · 13581 S. Glen Drive
 Pine, CO 80470 · 303-838-8715

RENEWALS

Corrie Cooperman
 Rte. 10, Box 77
 Santa Fe, NM 87501
 505-983-3090

Earl Bosley
 JAYHAWK LLAMAS
 P.O. Box 596
 Dighton, KS 67839
 316-397-5944

ADDRESS CHANGES

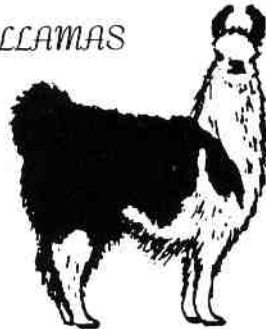
Patricia Wegner
 LLAMA LINES
 1800 Maple St.
 Northfield, MN 55057

Henry & Janet Rivera
 FRONT RANGE LLAMA
 TREK INC.
 18380 Countdown Dr.
 Peyton, CO 80831-8618

PAINTED SKY LLAMAS

Bert & Holly Vicars
 Diana Vicars

4437 Hwy. 23
 Ridgway, CO 81432
 303-626-5896



Stillwater Minerals

Since 1989

Bob & Jo Riley

Phone: 800-255-0357
 FAX: 800-648-2383

Post Office Box 1189
 Lyons, Colorado 80540

Formulated
 Specifically
 for
 Llamas
 and
 Alpacas



(303) 726-5346

P.O. Box 41 Winter Park, Colorado 80482

Jerry L. Frye

Susan R. Frye

Breeding for soundness,
 strength of character,
 variety of color,
 quality of fleece
 since 1982.



1989

Switzer Land
 ALPACAS
 and
 LLAMAS

Phil & Chris Switzer
 (303) 586-4624

P.O. Box 3800
 Estes Park, CO 80517

LETTER TO THE EDITOR:

At the Wool Market at Estes Park this past month I felt we had an excellent representation of our llamas from all over. It was great to see the increase of entries from last year.

I do have one objection and a suggestion to make. I feel that our classic short haired llamas and their owners are being overlooked as far as halter class is concerned. A short haired llama doesn't even get looked at by a judge when he's put in a class with medium wool llamas, therefore, the owners of short haired llamas don't even bother to enter them in this class and I feel that is a grave error. I think we should all encourage these owners to bring their llamas and participate, and the

only way we can do that is to have a separate halter class for them. You don't put your medium wool llamas up against the long wool animals and there is a bigger difference between the short and medium than in the medium and long where there is only a fine line in some instances.

I'd like to see comments from other short haired llama owners on this subject and a definite change in categories for shows. There should be three definite categories.

Hoping to read other reactions.

Joan Price · J & L Llamas
Ft. Morgan, CO

Please Vote on the '93 Conference!

HOPELESS CREW

By Dee Goodman

On August 14th, 4 EMTs, 1 Ham Radio operator and his 6 year old son, 5 llama owners, and 15 llamas left Twin Lakes, Colorado on a hike up the Colorado Trail to the foot of 12,600' Hope Pass. This group known as the "Hopeless Crew" was hauling over a half of ton of supplies for the Hope Pass Aid Station for the Leadville Trail 100.

What is the LT100? Its a 100 mile cross-country, foot race run mainly along the Colorado Trail south of Leadville, Colorado to Winfield (50 miles out) and back to Leadville. All ran in 30 hours . . . or less! This year 289 runners started with 139 finishing. This year's winner ran it in 19:52, 2 hours short of the record time of 17:55.

For the 3rd year, llamas have hauled all the equipment for the Hope Pass Aid Station. This station is at the 45 mile and

55 mile point of the race and also the highest point of the race at 12,000'. We hauled food, medical supplies including oxygen, a large 6 man dome tent used for medical, personal gear for the crew, and a portable kitchen. For water, we pumped it from a lake a 1/0 of a mile from the camp then haul it up with the llamas to the camp. This year we used 140 gallons for both drinking and soup.

Of all the 6 aid stations, the "Hopeless Crew" Station is the favorite of the runners for they know what it takes to get to Hope. And they all enjoyed the llamas, some even taking the time to go pet the boys or to take their picture.

All the people with the Leadville Trail 100 would like to thank the llamas and their owners for the help including Wes Mauz, Rob Ferris, Doug and Kelly Scott.

ROCKY MOUNTAIN LLAMA & ALPACA ASSOCIATION BOARD OF DIRECTORS

PRESIDENT

Dee Goodman
41930 County Road AA
Akron, CO 80720
303-345-2927

PRESIDENT-ELECT

Stan Lacher
Post Office Box 506
Elizabeth, CO 80107
303-646-0989

VICE PRESIDENT

John Fitzgerald
567 L. 25 Drive
Hotchkiss, CO 81419
303-872-3440

TREASURER

Sharon Beacham
2380 North 95th Street
Boulder, CO 80301
303-666-9437

SECRETARY

Judy Sealy
593 19-3/4 Road
Grand Junction, CO 81503
303-241-7921

Newsletter Editor: Jo Stewart Riley
Post Office Box 1189
1612 Spring Gulch Drive
Lyons, Colorado 80540
303-823-5409

Copy Typist: Anne Kirby
1130 South Third Street
Montrose, CO 81401
303-249-5011
(Send her articles to be typed!)

**DEADLINES FOR NEWSLETTER:
OCTOBER 9, DECEMBER 11, AND FEBRUARY 12**

Rocky Mountain Llama and Alpaca Association

593 19-3/4 Road
Grand Junction, Colorado 81503



Address Correction Requested

Bob & Barbara Hance
HANCE RANCH
11818 W. 52nd Ave
Wheat Ridge, CO 80033-2032

**Dated Material
Do Not Delay In Delivery, Please!**