

## ROCKY MOUNTAIN LLAMA AND ALPACA ASSOCIATION

### CALENDAR OF EVENTS

#### **November 12: RMLA Board Meeting**

The next meeting of the RMLA Board will meet in Glenwood Springs, Colorado at the Holiday Inn at 10:00 a.m. All members are encouraged to attend. If you would like more information, please call a Board Member.

#### **November 15: Front Range Llama Breeders**

The next meeting will be held at Sharon Beacham's House at 1:00 p.m. See article on page .

#### **December 31: Membership Renewals and Service Directories**

The deadline is December 31st for both the Membership renewals and to be included in the Service Directory. The forms are in the middle of the Newsletter.

#### **January 18-20: National Western Llama Show, Denver, Colorado**

Halter and Performance Classes. For more information and details, call Grace Shaddeau, 303-279-4896.

#### **June 10-13: Estes Park Wool Market**

Come to the Rockies and enjoy a fun filled and educational experience at the Estes Park Wool Market. Events include Spinning/Weaving Workshops, Contests, Demonstrations, and Vendors. For more information contact: Estes Park Wool Market, Fairgrounds, Post Office Box 1967, Estes Park, CO 80517, 303-586-6104.

### INSIDE THIS ISSUE:

- President's Message, p. 4
- RMLA Finances, p. 12
- Veterinarian Network, p. 9
- What is ALSA, p. 16
- Alpaca Illness, p. 10
- Library Notes, p. 19


▷ 18



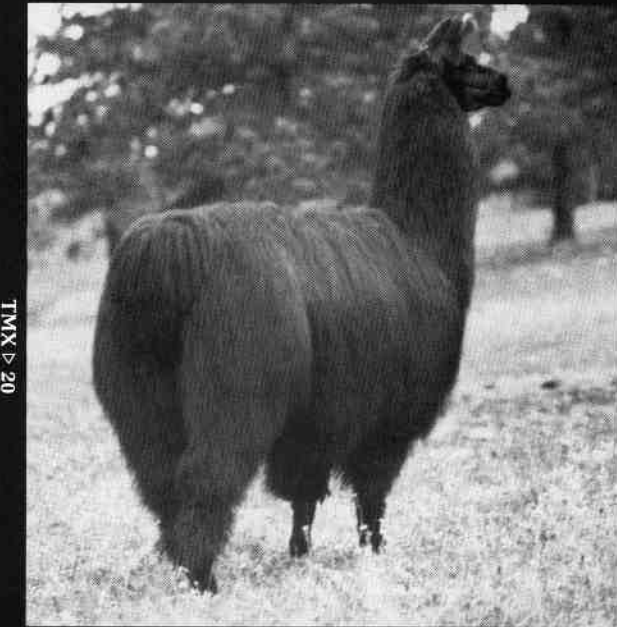
TMX ▷ 19

CAMACHO CHIEF 59828

TMX ▷ 14



**INDIAN PEAKS RANCH**  
 45640 Hwy. 72, Ward, CO 80481  
*Breedings and Offspring Available*  
**For Video or Portfolio:**  
**303-459-3245**



TMX ▷ 20

CAMACHO CHIEF 59828

TMX ▷ 15



TMX ▷ 21

CAMACHO C

TMX ▷ 16



276-3440

# ROCKY MOUNTAIN LLAMA & ALPACA ASSOCIATION BOARD OF DIRECTORS

## **PRESIDENT**

Dee Goodman  
41930 County Road AA  
Akron, CO 80720  
303-345-2927

## **PRESIDENT-ELECT**

Stan Lacher  
Post Office Box 506  
Elizabeth, CO 80107  
303-646-0989

## **VICE PRESIDENT**

John Fitzgerald  
567 L. 25 Drive  
Hotchkiss, CO 81419  
303-872-3440

## **TREASURER**

Sharon Beacham  
2380 North 95th Street  
Boulder, CO 80301  
303-666-9437

## **SECRETARY-MEMBERSHIP**

Judy Sealy  
593 19-3/4 Road  
Grand Junction, CO 81503  
303-241-7921

### **Other Important People You Might Need:**

#### **Newsletter Editor**

Jo Stewart Riley  
Post Office Box 1189  
Lyons, Colorado 80540  
303-823-5409

#### **Newsletter Typist**

Anne Kirby  
1130 South Third Street  
Montrose, CO 81401  
303-249-5011

#### **RMLA Library**

Chris Switzer  
Box 3800  
Estes Park, CO 80517  
303-586-4624

## **MEMBERSHIP INFORMATION**

Membership year runs from January 1 through December 31

**Adult Individual Membership:** \$30.00 (One vote, newsletter, directory entry)

**Farm or Ranch Membership:** \$50.00 (Couple or two individuals associated with one business; two votes, newsletter, directory entry)

**Junior Membership:** \$10.00 (18 or under; no vote, receives newsletter and 75% reduction in conference/show fees, must have adult member sponsor.)

**RMLA also provides an extensive lending library  
of books and videos to members.**

For further information please contact Judy Sealy

### **Deadlines for 1993:**

**January Issue** .... December 11

**July Issue** .... June 11

**March Issue** .... February 12

**September Issue** .... August 13

**May Issue** .... April 9th

**November Issue** .... October 8

*The information contained in this Newsletter is not intended to be a substitute for qualified professional advice. Our readers are encouraged to consult with their own veterinarian, accountant, or attorney with any questions concerning their animals or business operations. RMLA is not responsible for any losses resulting from a reader's failure to heed this caution.*



# PRESIDENT'S MESSAGE

*By Dee Goodman*

Greetings from a strange 5th dimension known as the Twilight Zone also known as my life. The first month as your President, shall we say, has been very interesting. Within a week and a half after the new Board took office, we had a major decision to make. We were asked by a member of RMLA to endorse Colorado Amendment 8, the "Go Colorado" Amendment. This has been one of the hardest issues that I have faced in the last year being on the board. Many hours of thought and discussion were involved with this issue (just ask Karla), The first thought to mind is this something that will affect RMLA? The answer was yes. The second concern was should RMLA get involved with politics. Being involved with farming and knowing now how much the government has regulated farming in the past 10 years, this worried me. My answer was YES . . . we do need a voice in government. We as llama owners and especially associations representing llama owners need to control our own destiny. We do not need regulations put on us by people who do not know about the llama business. We need a strong voice NOW and not after it is too late. Case in point, did you know that the Federal Government is now trying to pass a law that states that if you have at least one farm employee you may be inspected by OSHA at anytime?

This has already occurred in Oregon where ranchers have paid thousands of dollars in fines for such things as the rungs on a ladder being too far apart. Think about your ranch.

Point 2. Is the "GO Colorado" Issue just for Colorado again? Yes it is, but at the same time it also involves the rest of the states. Case in point. Colorado was the

first state to get Tork Reform for llamas. We can now help other states and their laws by offering Colorado's law and our experience in passing this law. Any member from any state can call any board member about the above issues and how these issues affect their state. If we can help, we will help. After many hours of thinking and many phone calls, the board decided to poll the Colorado members to get their thoughts and reactions on Amendment 8. At present members favor the endorsement of Amendment 8 three to one. Thanks to everyone who responded to this survey.

## **Along other lines**

Jo Riley met with the board to discuss the newsletter. First of all, all Board minutes will be published. Second, as of JANUARY 1, 1993, there will be a change in the ad rates for classified ads (Members-\$5, Non-members-\$10.00 for the first 50 words, \$.15 each word after). This will hopefully make the newsletter more self-supporting. Third, plans are on the way for an "ASK THE VET" column. Fourth, there will be 3 certificates in the center of the newsletter for new llama owners to get a free copy of the RMLA Newsletter. Fifth, but certainly not last, is, THIS IS YOUR NEWSLETTER, so please use it. Write an article about your thoughts and experiences with llamas/ PROs and CONS.

## **Along more lines**

It appears, from the most recent polling of the membership, that the RMLA "1993 Conference" will occur at the ILA Conference in Snowmass, CO on June 17-20, 1993. At this conference RMLA will have its annual business meeting, booth, and library, Also RMLA is thinking of

## PRESIDENT'S MESSAGE (Con't)

having a "Hands on" Educational Seminar at the end of September or the beginning of Oct, 1993. This seminar could possibly include the following kinds of clinics: Training, Driving, Packing, Judging, Llamas 101-505, kids workshops, Ultrasounds, etc. it would be designed so that your own animal(s) could be brought and at a low cost. More on this later.

Our committees are now being formed for the year. Please volunteer for a committee(s) of your choice. The following board members are the liaisons for the listed committees: Judy Sealy, Membership, Therapy, and Library. Stan Lacher, 1994 Conference, and the National Western Stock Show. John Fitzgerald, Herdsire, Research, and Education. Sharon Beacham, Finance, Wool, and Youth Funds. And myself, Marketing, 4-H/Youth, Elections, and Events. We do need volunteer help right away for the National Western Stock Show this upcoming year (1993), so please call Stan Lacher if you can help.

Notice that there is a membership form included in this newsletter. The board has decided that all new and renewed membership dues received after the last sponsored RMLA event for the year will be good for the following year to December 31. In this way new members can join and then not have to pay their dues again after a short period of time. Also at the same time, it may be easier for some members to pay before Christmas, instead of after the Christmas Crunch and before taxes.

RMLA member group insurance (farm, health, life, etc.) has been delayed a month. Hopefully it will be ready around December, 1992 - more about this later as a mailer will be sent out to all members about this program.

If you have an event that you would like RMLA to sponsor, then please call or Fax this request to me at anytime. We would like to see other states with RMLA sponsored events. RMLA would take care of the insurance issue and help with the event. Remember, this is your organization so use it. Again, if you have any questions or concerns, please let a board member know. All Board Meetings are open to the membership and everyone is invited to attend. The next meeting listed on the front cover.

### The last line

I was reading an article the other day that really hit home. It was about this woman and the "other" ladies involved with this woman's husband. It talked about the "scent" these other ladies left on him when he would come home from work and how he would know more about them than his own wife. How he always remembered the other ladies birthdays but forget his wife's and the same with the anniversaries. When the other ladies became pregnant he never once called them "FAT", but within 5 months of his wife's pregnancy he thought that she was gaining a little too much weight. When people would ask him when the baby was due, he would ask, "which one?" This story was about a farmer and his cows, but change the story to llamas instead of cows, and it hits pretty close to home. By the time you read this, Karla and I will have had our second future 4-H member and llama owner, and I am really trying to remember our anniversary for 1993. Keep smiling and humming down the llama trail.

Always,

*Dee*

# MINUTES OF THE EXECUTIVE BOARD MEETING

## THE ROCKY MOUNTAIN LLAMA & ALPACA ASSOCIATION

September 23, 1992

Meeting held at the Holiday Inn, Denver at 9:00 A.M. Board members in attendance: Dee Goodman, Stan Lacher, John Fitzgerald, Sharon Beacham and Judy Sealy. Guests attending were Jo Riley, Vic Breeden and Bob Hembrode.

- The meeting was opened with Jo Riley's thoughts on consideration of policy changes with the RMLA newsletter. POLICY change to be made states: "Classified advertisements in the newsletter will be charged at the rate of \$5.00 (members) and \$10.00 (non-members) minimum for 50 words plus \$.15 for each word over 50 words." This will go into effect January 1, 1993. Also suggested is a coupon in the newsletter which each member can fill out and give to new buyers so they can send it to the secretary for a complimentary copy of the newsletter and a membership form. This would provide a database of new llama owners for RMLA records.
- Membership dues paid at this time would apply to 1993 since RMLA events have concluded for the year 1992.
- "Ask the Vet" column encouraged for the newsletter. It would be similar to "Dear Abby". Veterinarians would be asked to respond to our questions.
- **Research grants.** A contract is needed for research dollars. A project contract should also require up-dates on how the monies are being spent.
- **Committees.** Fourteen committees for 1993 were divided among the board members to select chairpersons to represent each committee. The board member will work as liaison to the committee chairperson to keep the Executive Committee and membership informed through the newsletter. The minutes of the Executive Committee meetings and Treasurer's report will be printed in the newsletter.
- Bob Hembrode spoke to the Board regarding an amendment to be placed on the November ballot in the State of Colorado. **GREAT OUTDOORS COLORADO** is a citizens' initiative to preserve, protect, enhance and manage Colorado's outdoor heritage which first came about through the Colorado lottery. Both sides of the issue were presented. It was voted to mail the amendment information to the Colorado RMLA members for their opinion of whether RMLA should take a stand to support this initiative by endorsement.
- **Parade Banner.** We had been looking into the possibility of an RMLA banner to use on the sides of a llama during parades or events. It was agreed to drop the issue.
- **Rescue Cart.** Bobra Goldsmith demonstrated the accident victim litter developed for search and rescue missions at the RMLA conference in Sheridan. We offer continued support on this endeavor.
- **RMLA'S brochure.** An additional 5,000 copies of the brochure will be printed the end of this year. Several changes will be made at the time of printing including the name change from "Rocky Mountain Llama Association" to "Rocky Mountain Llama and Alpaca Association". Free classified advertising will be changed to "low cost classified advertising". RMLA is now supporting "research projects in the industry" in addition to Colorado State University. Special events will read the "Annual Rendezvous" instead of the "Wind River Rendezvous". We now have members in 27 states and "foreign countries."
- **Equine Law/Llama Law.** RMLA will reasonably support other states to offset costs to obtain the llama law in their state as passed in Colorado.
- **RMLA/ILA Conference.** Dee Goodman is waiting for response from the membership on participating with ILA in a joint conference in Snowmass June 16-19, 1993. Response has been poor. The hand vote held at the Sheridan conference will be used if no more responses are made.



## MINUTES OF THE EXECUTIVE BOARD MEETING (Con't)

- **Policy Manual.** During 1993 a policy manual will be assembled by the Board of Directors and Committee Chairpersons. This will include policy decisions. The manual will also aid new board members and committee members on the function of each committee.
- **Education Seminar.** Dee Goodman suggested considering an "education seminar" to be held as a "hands-on" seminar. A three-day event would include everything from Llama 101 to 105, ultrasound demonstration, TTEAM training, neonatal clinic, driving clinic, youth events, etc. An education seminar would off-set the con-

ference/classroom time which represents our annual conference.

- **RMLA Display Booth.** POLICY was voted to pay shipping on the display booth to large events (for example, state fairs and RMLA events) but pay only one-way on small events (for example, county fairs.) New photographs are needed for the display booth.
- **The next RMLA Board meeting** will be November 12, 1992 at the Holiday Inn, Glenwood Springs at 10:00 A.M. The meeting was adjourned at 2:00 P.M. Respectfully submitted, Judy Sealy

## MEMBERSHIP FEES!

We are approaching the end of 1992 and are now accepting membership dues for 1993. Please fill out the membership form, remove it from the center of your newsletter and return it to Judy Sealy with your membership fee. Please be sure to let us know on which committees you would be interested in serving. Your information will be passed along to the committee chairperson.

The Service Directory form is also included in the centerfold. Please return it with the appropriate fees to Erma Hast. Remember, this directory is sent along with the RMLA brochure to every inquiry we receive and included with the RMLA display booth at many events. We look forward to hearing from you early so preparation can begin on the 1993 directories.

## CHANGES IN THE NEWSLETTER

I keep wishing I could get the Newsletter right the first time, but no such luck. I have put out some calls to several Vets around the country in an attempt to get some technical articles. If you have any contacts, call me. Keeping the membership abreast of the latest developments in the industry is my main goal.

My second goal is to make the Newsletter self-supporting and allow people more flexibility in classified ads. I feel it has stifled some people to limit their ads to 50 words so we have changed the rates. There is a basic rate for 50 words (members-\$5.00 and non-members-\$10.00) plus

if that is not long enough, additional words can be added for 15¢ a word.

If you are interested in promoting your llamas, the best way is to do some swell thing with your llamas, take pictures and write an article. Send them to me and I will put it into the newsletter. It is fun to see what other ranches are doing. *NOTE: The pictures have to be black or white or clear color. A dark color with small figures will not reproduce very well.* All of this doesn't cost you anything!

**A final plea.** Please get involved in the Veterinarian Network. See page 9. It will benefit us all so much.

# ★ MC Hammer

## Too Legit To Quit!

★ Seven-time  
GRAND  
CHAMPION including  
1992 National Western  
Stock Show, 1992 Fort  
Worth Stock Show, and  
1992 Estes Park Wool  
Market.



The Ambassador x T. Y. Button



### U Can Touch This!

- ★ Breeding Fee: \$1000
- ★ Multiple Breeding Discount
- ★ Live Birth Guarantee



**EASTWARD**  
L•L•A•M•A•S  
**INN EDEN**

GALE & MARGE ARMSTRONG  
5643 E. 2300 N.  
EDEN, UTAH 84310  
801/745-2297

**Overland Trail**  
*llamas*

MIKE & DALE PETTIGREW  
168 EMERALD MOUNTAIN COURT  
LIVERMORE, COLORADO  
303/493-2335



## ASK A VET ... VETERINARIAN NETWORK

by Jo Riley

So many times a good idea can rise to the surface and with several people discussing it, the good idea can turn into a **GREAT IDEA!**

The Newsletter will run an article "Ask a Vet." This is the good idea. After wondering how do we find Vets that can and are willing to answer the questions, we came up with the **GREAT IDEA!**

I am asking all members to please contact their veterinarian and ask him or her if they would be willing to be part of a database system of Llama and Alpaca Veterinarians and occasionally write an answer to a question.

The steps for completing the **GREAT IDEA** is as follows:

1. Ask your Vet if he will become part of our network.
2. Send the Vet's name, address and phone # to: Jo Riley  
P. O. Box 1189  
Lyons, CO 80540  
303-823-5409
3. I will send him a form to complete listing the necessary information plus areas of knowledge in the llama and Alpaca kingdom they feel comfortable answering questions. (To be honest, I have not defined all the areas but I will have a large "Other" section for the specific areas I overlook.) In areas of knowledge, I am imaging that different vets have had to solve different problems.
4. I will enter all the vets and their information into a database. When questions are sent to the Newsletter, I will forward them a Veterinarian for him to answer. If there are more questions than space available, the Editor reserves the right to edit the questions with the approval of the President.
5. **Now the important part . . . Networking!** I will sort the information by the area and list the Veterinarians for each area. I will print out a list and mail it to all the Veterinarians involved. Hopefully, this type of network will help us care for our animals more efficiently. If there is a veterinarian who has experience in a specific area, sharing his knowledge will not only save time but maybe an animal's life.
6. **The Bottom line.** This network will only work if everyone recruits his Vet to share knowledge. The form will allow for limitations for Vets who are shy about sharing their knowledge. If you have any suggestions, please call me. Please let's all contribute and make this the best network for llamas and alpacas information in the industry.
7. If you are shy to ask your Vet maybe a good time to ask permission is when you are paying your bill! I see this as a Win-Win situation. If your Vet has questions about the Network, please have him call me or Dee Goodman.

**With your help, this will be a great success!**

## ALPACA ILLNESS

by Barbara Hance

Sunday September 20, 1992 was a sad and weepy day at the Hance Ranch. We had to give permission to Dr. Chris Cebra at the Colorado State University Veterinary Hospital to euthanize Mascara. She was two years and one month old, a beautiful, friendly alpaca; three months pregnant with her first cria. Her death was probably ordained some time before, but our first indication was rear leg paralysis on the morning of September 10, a Thursday and our usual vet's day off, so we called Golden Animal Hospital who sent Dr. Gary Pallaoro. Was it trauma? We didn't know. He treated her with Dexamethasone and Banamine in case, and warned us that she might abort. Her vital signs were normal.

Early the next morning Dr. John Pallaoro repeated the Dexamethasone and also gave her Thiamine. We called Dr. LaRue Johnson at CSU and they discussed the problem and the treatment so far. Dr. Johnson's first thought was meningeal worms and recommended five times the usual dose of Ivomec (5cc), which we gave. The only other idea was ticks for which she was checked by three people. Dr. Pallaoro did a rectal exam and took a fecal sample, which showed nothing.

September 12, Dr. J. Pallaoro gave her Vitamin B Complex, Thiamine and Selenium + Vitamin E. We told him of her breed check to our male on September 8, which we had forgotten before. Her vulva and anal area had very little muscle control this morning. Her appetite was good, drinking plenty, temperature normal and very alert since the onset of her paralysis. Treatment was geared toward trauma. Dr. Pallaoro suggested a hoist so we could exercise and massage the legs to keep the

muscle tone. We "jerry-rigged" a system from a child's swing set, two sets of rope block and tackle, and two cinches borrowed from neighbors.

On the 12th and 13th, she was able to put weight on the rear legs but could not get up alone. The vet did not come on the 13th but we gave her the Thiamine he left.

On the 14th Dr. J. Pallaoro gave her Calcium/Phosphorus, Thiamine, and Probiocin. She could not or would not stand on the rear legs.

September 15, the vet treated with Calcium, Thiamine and a large dose of Vitamin B Complex paste. The anus and vulva seemed more controlled, otherwise there was no change.

The 16th, the vet did not visit. She had a slight temperature (103), and during the afternoon she developed a rattle in the throat. We gave the prescribed Vitamin B Complex paste. The next morning Dr. J. Pallaoro gave her Thiamine and Gentocin. As she was showing no improvement, he suggested we talk to Dr. Johnson at CSU, who said they better see her. We gave another shot of Gentocin at 6:00 p.m. During the night she drank less and ate little. Her bowels were very loose.

Friday a.m. She was still alert and not showing stress after the one hour ride to CSU. Dr. Ellen Belknap was puzzled at the small amount of spinal fluid when she made the tap. "Camelids usually have more pressure than other animals." The lab found nothing unusual. The neck catheter was placed and the blood drawn by Dr. Chris Cebra showed low protein and red and white count consistent with an infection. The heart and lung check was good and the rattle was in the throat, not the lungs. The X-ray of the spinal area

## ALPACA ILLNESS (Con't)

detected nothing. The neuro exam showed more reflex and pain response on the left than on the right. Her ability to raise, lower and swish her tail seemed puzzling to all the vets. Blood-gas test results were normal. Dr. LaRue Johnson did an exterior ultra-sound, which showed a very active fetus Approximately three months old. Using the probe internally to check the spinal area he detected a mass. He found a student with small hands to do an internal exam, she was able to feel the mass and she used the probe so we were all able to view it. It was two to two and a half inches across and about three inches right of the spine.

By this time it was too late on Friday to do a myelogram and/or a biopsy so it was decided to treat her with medication and feed and water to get her in the best shape for anesthetizing on Monday. She appeared to be very happy to have food and water and no more probing.

September 19, she looked the same to us. We helped stand her up for a bit of exercise. Her charts showed temperature normal and protein coming up. She was not eating well so we found some fresh alfalfa as a treat.

9:00 a.m. Sunday, Dr. Cebra called. She had crashed at 1 a.m., and he thought she was stable at 3 a.m. and went home. At 5

a.m. she "crashed again and now was very distressed with difficult breathing, shaking and high temp. He asked our permission to euthanize her. We cried a lot.

Monday we drove to CSU to get the necropsy results and were surprised to learn she had lymphosarcoma since the vets had indicated they did not expect to find cancer in such a young animal. Dr. Johnson showed us some of the cancers on her heart and liver; possibly the one we saw with the ultra-sound on a section of the abdominal wall, and one inside the spinal column which had caused the paralysis. There were numerous others. Dr. Johnson said they could expect to find this in a 15-year-old and they have seen it in llamas but this is the first alpaca he knows of with lymphosarcoma.

The veterinarians at Golden Animal Hospital were most interested since they see this occasionally in cattle, and Mascara did not have swollen glands or other clinical signs of this cancer. They hope to see a scientific paper written on this case.

Thanks to the vets, the future vets and all the others who cared, sympathized and encouraged us.

Bob and Barbara Hance, owners  
Mary Hance, manager  
Hance Ranch, Wheat Ridge Colo.

## FRONT RANGE LLAMA BREEDERS

A loosely organized group of llama breeders on the Front Range have met to plan joint promotions of their animals.

The next meeting is on Sunday, November 15 at 1:00 at Sharon Beacham's house, 2380 North 95th Street, Boulder.

The boundaries for this group are I-70 on the south, Highway 85 on the east, the

Continental Divide on the west and the Wyoming Border on the north.

They are in the process of developing a brochure with a map of the area and ranch listings. If you are interested, please call Mary Beth Hartsough, 303-785-2463 or Alaine Byers, 303-459-3245 quickly as this group is on the move!



# RMLA STATEMENT OF ASSETS, LIABILITIES, AND FUND BALANCES

September 30, 1992

## ASSETS

Cash - Park National Bank.....	20,859.86
Cash - UBFC .....	658.30
Accounts Receivables .....	0.00
<b>TOTAL ASSETS .....</b>	<b>21,518.16</b>

## LIABILITIES

Accounts Payable-Authors' royalty .....	793.35
Sales Tax Accumulated .....	20.95

## Fund Balances

General Operations Fund .....	1,592.02
Public Educations Fund .....	440.83
Membership Education Fund.....	3,007.62
Research Fund .....	3,055.95
Contingency Fund .....	3,000.00
Special Events Fund .....	(5,295.67)
RMLA Book Fund .....	7,660.11
Scott Welles Fund .....	7,243.00
<b>Total Funds .....</b>	<b>20,703.86</b>
<b>TOTAL LIABILITIES .....</b>	<b>21,518.16</b>

## WOOL COMMITTEE

*by Ginger Ferris*

Thanks to everyone who contributed items and time for the wool room display at Conference. We had an enthusiastic turnout for our demonstrations, spinning, carding, locker hooking and the round table discussion of llama wool use.

There seems to be some interest in selling wool at events through the RMLA wool committee. To do this there are many questions to be addressed. Everyone's ideas and suggestions will be much appreciated. We should have a standard for cleanliness of the wool and all wool should be packaged in equal amounts with labels, business cards, and the same pricing per ounce. No attempt will be

made in the beginning to grade the wool for fineness. If anyone is interested in this effort, please drop me a card with your ideas and comments. The two events we are considering at this time are The Western Stock Show and the Estes Park Wool Festival. As always, volunteers will be needed to man a booth and give demonstrations. If you haven't been a member of the Wool Committee in the past and would like to join us, please send me your name, address, and phone number.

Ginger Ferris  
Post Office Box 292  
Buena Vista, CO 81211

**ROCKY MOUNTAIN LLAMA AND ALPACA ASSOCIATION  
INCOME & EXPENSE REPORT CONSOLIDATED FOR ALL FUNDS**

JANUARY 1, 1992 - SEPTEMBER 30, 1992

**INCOME**

4-H Book Sales .....		1,286.69
Caring For Llamas: Book Sales .....	11,156.68	
Shipping .....	726.66	
Total CFL Income .....		11,883.34
Conference .....		6,089.00
Fairplay Llama Race .....		1,157.40
Interest .....		496.85
Law Signs .....		729.31
Library .....		45.00
Member Dues 1992: Adult Individual .....	4,610.00	
Farm/Ranch .....	5,130.00	
Junior .....	80.00	
Member Dues 1993: Adult Individual .....	30.00	
Total Member Dues .....		9,850.00
Miscellaneous Events .....		288.00
Miscellaneous .....		120.40
Newsletter ads .....		1,881.00
Rendezvous .....		1,138.36
Scott Welles fund .....		7,243.00
Service Directory ads .....		1,400.00
<b>TOTAL INCOME</b> .....		<b>43,608.35</b>

**EXPENSES**

4-H Book .....		282.98
Advertising .....		302.60
Bank Fees .....		126.70
Board of Directors .....		963.31
Caring For Llamas: Phone .....	3.67	
Postage .....	114.30	
Production Costs .....	5,387.25	
Promotion .....	26.75	
UPS Shipping .....	832.57	
Total CFL Expense .....		6,364.54
Conference .....		12,652.65
Corporation Fee .....		16.00
Directory: Owners/Breeders .....	797.21	
Service .....	451.23	
Total Directory Expense .....		1,248.44
Display Unit .....		939.55
Equipment .....		481.93
Fairplay Llama Race .....		856.93
Grant (Kate Booth-Doyle) .....		100.00
Insurance .....		1,000.00
Judges Book .....		308.30
Law Signs .....		1,861.75
Legal Fee .....		200.00
Library .....		530.00
Llamathon .....		1,000.00
Memorials .....		50.00
Miscellaneous Events .....		522.50
Newsletter .....		2,546.50
National Western Stock Show .....		764.07
Office: Copying .....	195.37	
Supplies .....	131.16	
Total Office Expense .....		326.53
Postage .....		1,079.85
Printing .....		132.81
Rendezvous .....		1,000.00
Research Project .....		2,500.00
Telephone .....		1,600.43
<b>TOTAL EXPENSES</b> .....		<b>39,758.37</b>
<b>TOTAL INCOME LESS EXPENSE</b> .....		<b>3,849.98</b>

## GOLD RUSH '92

by Eleanor Palmisano

An excited crowd gathered in perfect fall weather September 18th to preview the llamas of Gold Rush '92, Frank and Eleanor Palmisano's inaugural sale. There was standing room only as over seventy beautiful llamas were paraded one by one before the potential buyers.

The fun had begun the evening before with the party for Consignors and their guests at the Great Room of the Sheraton Graystone Castle.

The Llama sale began promptly at 2 p.m. on Friday. A communication system kept persons in the barn area informed of prices.

The sale's top-selling female was Geisha's Catmandu at \$9,400, a consignment of Patricia Mulcahy and Mathew Spafford of Northwoods Llamas, Rhinelander, Wisconsin. The proud new owners are Jack and Margie Scott, Scott Llama Ranch, Memphis, Texas. High Selling Male was the beautiful Cameos Nautilus, consigned by Lou Nelson of Nellis Llamas, Warden, Washington. His new home is with Monte and Carol Ballew, Castle Llamas, Bellvue, Colorado. Inquire with Monte and Carol about availability for outside breedings. The High Volume Buyers of the Gold Rush '92 Llama Sale were Harold and Sharon Herbold of Pikes Peak Woolies, Colorado Springs, Colorado.

Saturday's weather was also beautiful and was an ideal time to enjoy a game of tennis, horseshoes, or golf before the alpaca sale preview at 2 p.m. It was also a great opportunity to simply picnic or walk, and some happy new llama owners could be seen hiking down the many lovely park paths or strolling by the lakes with their animals.

The eagerly awaited Gold Rush '92 Alpaca Sale began right on time at 6 p.m. This was the first open-consignment sale exclusively for alpacas, and those participating were well aware of the importance of the event and their place in the history of the industry. The distinction of winning the first female sold, Megan's Canadian Nutmeg, consigned by John and Nicole Bervas of Duncan, British Columbia, went to Bill and Joan Martin of Far West Llamas, Elma, Washington. Martha Lange of Skyline Ranch, Guffey, Colorado, made her entry into alpacas in a big way by purchasing the High Selling Female (\*PLA's Janice Joplin, consigned by John and Nicole Bervas), the High Selling Male (Black Jack Davy from Eileen Newcomb, Llama Lan, Allegany, Oregon), and by being the High Volume Buyer. Her final bid for Janice Joplin was \$18,000 and for Black Jack Davy, \$7,500. Averages for both males and females were extremely strong.

By popular demand, a llamas only Gold Rush '93 Spring Sale is planned for Salt Lake City (dates to be announced very soon) and the Gold Rush '93 Fall Sale will again be at the Waymire Dome in Brighton, Colorado with the Alpaca Sale on Friday evening, September 17th and the Llama Sale at noon on Saturday, September 18th.

This year they donated 1% of the Gross Sale Proceeds of Gold Rush '92 to the ILA Marketing Research Program. For 1993, they are pleased to announce that 1% of the gross proceeds of the Fall Sale (both alpaca and llama) will go to the Rocky Mountain Llama and Alpaca Association. They will also auction items donated to the Spring Sale with proceeds to go to RMLA. Call Frank or Eleanor Palmisano at 303-242-8759 for more information.





*Frank, Eleanor, Frank Stephen, and Auburn Palmisano  
wish to thank everyone who helped make Gold Rush '92  
a special event! We look forward to seeing you all at  
GOLD RUSH '93!*

Consignments now being accepted . . .

Living Art, Inc. • 2309 J Road • Grand Junction, CO 81505 • (303) 242-8759

# WHAT IS ALSA?

*By Bobra Goldsmith*

ALSA, the Alpaca & Llama Show Association, is a non-profit organization whose purpose is to promote llama and alpaca shows throughout America. It is the primary show organization for llamas and alpacas. Shows enhance the visibility of the animals, providing a showcase where their usefulness and versatility can be demonstrated before the public.

As the major show arm of the llama industry, ALSA is dedicated to the improvement of shows. It establishes guidelines which shows must meet, it trains judges, and offers show clinics for llama and alpaca owners to help them improve their skills in showing their animals. In addition, ALSA awards show points to winning animals and gives recognition to those who gain champion status.

This is the overview of ALSA's mission. But how does ALSA work, and what are the benefits for llama and alpaca owners?

## SHOW GUIDELINES

ALSA has developed and is continually refining show criteria so that shows will be well organized and judged consistently and fairly wherever they are held. From Canada to Miami ALSA-approved shows follow the same guidelines and rules, making showing easier for llama owners everywhere. ALSA publishes its rules and guidelines in its Handbook for shows. When show management, exhibitors, and judges alike are governed by the rules, exhibitors know better what to expect when they attend an ALSA sanctioned show.

ALSA is equally dedicated to the overall well-being of our llamas and alpacas, not only in terms of how they are treated and handled at shows, but in the longer view of their soundness, health, and usefulness as developing species. To this end animals in halter classes are judged primarily on soundness and conformation, and in the

case of alpacas, the quality of their fleece. In performance classes the animals are judged on how well they respond to the challenges offered by the class, showing their training, agility, willingness, and cooperation with the handler.

## TRAINING OF JUDGES

To further its goal of having shows judged consistently and fairly, ALSA has a training program for judges which has become more and more rigorous. Through beginning and advanced judging clinics and a program of apprenticeship under experienced judges, those interested in becoming approved ALSA judges learn to evaluate llamas in halter and performance classes. They must learn proper ring procedures, how to judge showmanship classes. They study ring etiquette, ethics, and how to evaluate the safety of obstacle courses, for they are ultimately responsible for the conduct of the show ring. Those who want to become alpaca judges attend additional clinics specializing in alpaca conformation and judging of their fiber.

For halter classes judges must be able to recognize the conformation faults and strengths of all the animals in a class and balance the desirable and undesirable traits in their judgments. In addition, they learn to give oral reasons for their placings of the animals. For performance classes they learn to use a point system so that each llama will be judged by the same criteria on each obstacle.

## WHAT ELSE DOES ALSA DO? EDUCATION

ALSA's Education Committee arranges clinics for people interested in preparing their animals for the show ring. Experienced exhibitors teach classes which cover every facet of showing, from pre-show grooming and show ring procedures, to how to best

## WHAT IS ALSA? (Con't)

present one's animal before the judge. This fall the Education Committee's new videotape, "The Competitive Edge" will make this kind of information available to more people. Some helpful showing hints are published in the ALSA Handbook.

Other clinics include the detailed study of llama or alpaca conformation--the faults and strengths that any individual animal may exhibit. These clinics are useful for breeders, even if they do not want to show their animals. Breeders must constantly judge their animals' conformation in order to make good decisions in selecting pairs for mating, which determines the progress of their breeding program. These hands-on courses offer even the least experienced person the fundamental background necessary to get a positive start in the industry.

A course in Show Management or "How to Put on an ALSA Show" takes interested persons through all the ins and outs of organizing and putting on a show. Good show management lies at the heart of a successful show, and ALSA promotes better shows through this program.

ALSA is also committed to shows and activities for youth. ALSA shows offer classes for young exhibitors and supports youth programs across America.

### NEW PUBLICATIONS

To keep its members abreast of scheduled shows, clinics and other new developments, ALSA publishes its members' quarterly newsletter. The JUDGES' FORUM addresses issues of particular concern to all approved judges, show stewards, and apprentice judges.

### ALSA HAS DEVELOPED THE GUIDELINES, BUT "WHO" IS ALSA?

ALSA is made up of llama and alpaca owners and breeders from across the US and Canada. A Board of Directors elected

by the membership works diligently to fulfill ALSA's goals. Without the dedication and input of its membership, ALSA would have accomplished nothing. These breeders, owners, and exhibitors make ALSA what it is today--an active, integral part of the llama industry. The number of ALSA sanctioned shows has been growing steadily the past few years, as the value of stability and consistency in shows has been recognized.

### NEW MEMBERS NEEDED

There is no question that showing of alpaca and llamas influences the llama industry, both as to breeding goals and uses of the animals. High-quality shows benefit all of us by making our animals more visible and demonstrating their usefulness. Every llama and alpaca owner and exhibitor has reason to belong to ALSA. Owners and breeders need to be aware and be able to evaluate their animals' structure and soundness. Exhibitors need to keep abreast of show procedures and requirements.

As ALSA grows it needs more members and more input from those members in order to respond to the showing needs of the industry. Showing animals is a complex business. As the ALSA Board is made aware of questions and problems encountered by exhibitors, show management, and judges, it strives to address these problems.

Should ALSA develop a system of regional shows followed by a National Championship show? How would this system benefit the industry as a whole? As an ALSA member YOU could help decide the direction showing of alpacas and llamas will take.

### SPECIAL MEMBERSHIP DRIVE

ALSA is conducting a fall membership drive which offers specific benefits to those joining before December 31st. New members joining during the last quarter of 1992 will receive full membership through 1993, the current handbook and the 1993 revised handbook. A 10% discount on their



## WHAT IS ALSA? (Con't)

membership is offered to renewing members paying by December 31, 1992. Members receive a \$20 discount on fees for show clinics and a discount on the forthcoming ALSA video, "The Competitive Edge." The membership fee is \$35 for adults, \$25 for youths. Life memberships are \$200.

To join now, send your name, address, phone number, and check for your membership made out to ALSA, 5505 Dutch Lane, Johnstown, OH 43031 or phone ALSA at 614-967-6636. It's that simple and very beneficial!

## 4-H INFORMATION

The El Paso County Extension Office is soliciting an interest count among all the counties in Colorado to have "llama care and showing" declared a valid state 4-H project by CSU. El Paso and Teller Counties have had 4-H'ers participate with llamas as pilot projects, and the interest within these counties seems to be growing rapidly. For 1993, the llama project in El Paso County is aiming for fair participation in three classes: Performance, Showmanship and Halter.

Several 4-H Llama owners throughout both Counties would like to see a conformation show in which the animal itself is judged as to correct conformation and behavior. If there is much interest in this class, we may press for approval, but at this point do not intend to pursue this. If the first three classes are approved, conformation class will come with time.

To help 4-H'ers get started, many llama breeders are willing to board the animals

for a nominal fee. Most of the participants in El Paso County live in Colorado Springs and borrow llamas from outlying farms.

With your input we hope to establish state-wide guidelines for the llama projects. Without interest shown from more Counties statewide, it will take much longer for this to transpire. This is a very viable method to educate and guide the public about llamas. The llama industry survival depends upon future breeders. What better arena to expand into than 4-H?

In order to plan next year's 4-H projects and the fairs we need your interest count now! For more information or discussion, please call or write Charlie Lambert, El Paso County Llama Superintendent at 719-495-0877, 10535 Raygor Road, Colo. Springs, CO 80909, the El Paso County agents, 719-520-6450 El Paso County Extension Office, 108 North Pine, 4th floor, Colo. Springs, CO 80905 or your own Extension Office in your County soon.



*Switzer Land*

**ALPACAS  
and  
LLAMAS**

Phil & Chris Switzer  
(303) 586-4624

P.O. Box 3800  
Estes Park, CO 80517

**Stillwater  
Minerals**  
Since 1989

**Bob & Jo Riley**

Phone: 800-255-0357  
FAX: 800-648-2383

Post Office Box 1189  
Lyons, Colorado 80540



Formulated  
Specifically  
for  
Llamas  
and  
Alpacas

## RANCH IDEAS

*Editor's Note: Several months ago I asked for ideas for use around the ranch. Matt Soper was the only one who responded so finally I have room to run his creative idea.*

We have three llamas. Because of this our water needs are very small. We have a large plastic bucket, about 12 gallons. In the summer we clean it with baking soda every week and place it in the shade because it is black and heats up too much.

In the winter we sandwich two buckets together (kind of like a double pane window) because for most of the winter it is very cold causing a freezing problem. To

avoid the \$60-80 electric bill jump, we heat large rocks on our wood stove and place them in the water. This does a good job of keeping the water open.

The colder it is out, the more we burn wood to heat rocks so it works out well. Some folks think we're king of goofy. We think we're practical. What do you think?

Riverview Llama, 7090 Riverview Road  
Riverton, WY 82501

## RMLA LIBRARY NOTES

*by Chris Switzer*

Business as usual - check outs, returns and working on the waiting list. The Library is a very active part of our organization. 25-30 packages go out each month. Very little of the Library is at my house . . . mostly it is "out."

Recently 2 people requested a basic video to show at a school to a 4-H group. Isn't that a great idea! I need a month's notice for this kind of thing to be sure you get your request at the appropriate time.

Again, please put your last name on the items you return. The card file is organized by your name and not the title. Thanks ahead of time.

The new video "Fun with Llamas" has 14 llamas tied in a string going through obstacles and on a hike. Quite impressive.

Please let me know your ideas and do send articles of interest.

This is our Library so please use it.



John & Emily Klauss

- November through April -  
512/535-4443  
P.O. Box 609  
Helotes, Texas 78023

- May through October -  
719/748-8115  
P.O. Box 788  
Florissant, Colorado 80816

## VOLUNTEERS

RMLA needs volunteers for  
the following committees:

**Finance • Wool  
Herdsire • Education  
4-H Youth • Marketing  
Membership  
Sponsored Events**

*If you would like to work on one  
of the committees, please call one  
of the Board Members listed in  
the President's letter on pages 4-5.*

### MORRIS LLAMAS

Dale and Vicki Morris  
P.O. Box 848 • Florissant, CO 80816  
(719) 748-3590

Banana Belt Ranch



*Quality Begets Quality*

Quality llamas for sale - Stud Service  
Domestic & Imported Bloodlines  
All our llamas are registered,  
4-way tested, TTEAM trained  
and guaranteed  
Reasonable prices & delivery.  
Visitors Welcome.

# THE COLORADO STATE FAIR

by Sally German

The Colorado State Fair has been an excellent showcase for our llamas for the past two years. Thousands of people attend the State Fair and we have been located by the front gate. This year they organized a llama parade for Saturday and Sunday led by a high school drum core. It had a Pied Piper effect which led spectators back to the arena where we did packing, spinning and general llama demonstrations for two hours. Dee Goodman was our MC and our "happy camper." He demonstrated in a light-hearted and fun way the difference between hiking and camping, carrying a pack and all of the gear and having a llama carry it. After the demonstration, all of the participants and llamas remained in

the ring and allowed members of the public to ask questions and handle the llamas. This is a very effective sales tool. As soon as llamas are officially declared as a state 4-H project, we hope to expand our State Fair Activities to include a youth show. The fair would like to see us develop a full fledged ALSA show in the future. If you would be interested in helping with next year's program or developing a show, please contact Cheryl Lambert at 719-495-0877. I highly recommend this showcase as a way to attract and meet new buyers. Let's take advantage of the cooperation and enthusiasm of the State Fair Administrators and continue to improve our presence at this prestigious event.

## NEW RATES FOR ADVERTISING

### DISPLAY ADS:

Full Page: 9" X 6-1/2" .....	\$65.00
Full Page inside Cover .....	\$80.00
1/2 Page: 4-1/2" X 6-1/2" .....	\$40.00
1/2 Page Back Cover .....	\$50.00
1/2 Page: (Back cover with two color)....	\$115.00
1/4 Page: 4-1/2" X 3-1/4" .....	\$20.00

**10% Discount for 3 Consecutive Issues  
on Same Display Ad!**

Business Card: 2" X 3-1/2" .....	\$10.00
----------------------------------	---------

**All Display Ads must be camera-ready.**

### CLASSIFIED ADS:

Member Classified (50 words): .....	\$5.00
(For more than 50 words-15¢ per word)	
Non-member Classified: .....	\$10.00
(For more than 50 words-15¢ per word)	

**Please mail all ads  
and typed articles to:**  
*(A good ribbon makes all  
the difference!)*

**Jo Riley  
Post Office Box 1189  
1612 Spring Gulch Dr.  
Lyons, CO 80540  
303-823-5409**

*Send articles that  
need to be typed to  
Anne Kirby*

**Please make checks  
payable to RMLA.**

***All classified ads and articles must be typed double-spaced!***

**Deadline for next issue is December 11th.**



# NEW MEMBERS AND RENEWALS

Guyron Crooks  
**CAMAS-ROSE LLAMAS**  
 17136 Hwy. 42  
 Camas Valley, OR 97416  
 503-445-2316

Kevin Higgins  
 7 Red Maple Place  
 Kitchener, ONT N2N 1P9  
 Canada  
 519-579-0404

Pamina Haddock  
 1016 S. Wayne Street #408  
 Arlington, VA 22204-4435  
 202-708-1389 (daytime)  
 703-553-0051 (evenings)

Lauren Herbold (Jr. Member)  
**PIKES PEAK WOOLIES**  
 15350 Hwy 83  
 Colorado Springs, CO 80921  
 719-495-3092

Cathryn R. Clark  
 7424 Tanglewood  
 Wichita, KS 67206  
 316-687-5755

Ellen L. Pfister  
 Don C. Golder  
**DUNN MOUNTAIN RANCH**  
 926 Yale  
 Billings, MT 59302  
 406-947-5931

DeAnn Snyder  
**PORTER SPRINGS LLAMAS**  
 780 West 2250 South  
 Perry, UT 84302


Richard & Carolyn Bracht  
 R.D. 1, Box 700  
 New Hampton, NY 10958  
 914-374-7891

Roger W. Akers  
 Sandy Henning  
**DORSEY MANSION RANCH**  
 2020 Broadway #A  
 Santa Monica, CA 90404  
 310-395-0260

Darrell E. Newton · 612 Sunrise Lane · Fort Collins, CO 80521 · 303-221-3744


Camas-Rose Llamas is selling whole or parts of our one-of-a-kind, twelve llama, show, work, or play, nationally known, performance trained, "Llamas are fun", pack string. Prices include packs and tack. Free 25-minute video of string in action to serious inquiries and free delivery nationwide to buyer of entire string. Call Guyron Crooks, 503-445-2316, Camas Valley, Oregon. Prices: (including twins) "Sonny 1" & "Sonny 11". Solo animals: \$1500.00 each, multiple animals \$1350.00 each, entire string \$1200.00 each.

Breeding for soundness,  
 strength of character,  
 variety of color,  
 quality of fleece  
 since 1982.



(303) 726-5346 P.O. Box 41 Winter Park, Colorado 80482

Jerry L. Frye Susan R. Frye

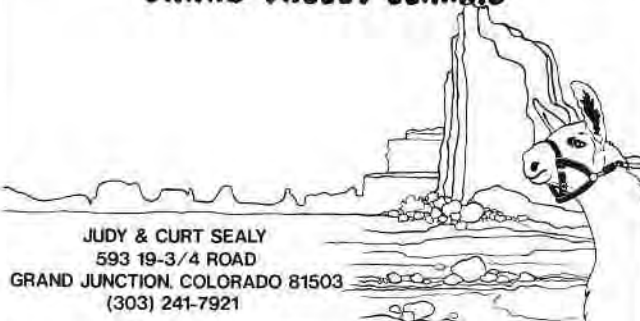


**Llamarage**

LLAMAS FOR BREEDING, PACKING & PETS  
 AT REASONABLE PRICES


Joe & Mary Beth Hartsough P. O. Box 574  
 Platteville, CO 80651 303-785-2463

**GRAND VALLEY LLAMAS**



JUDY & CURT SEALY  
 593 19-3/4 ROAD  
 GRAND JUNCTION, COLORADO 81503  
 (303) 241-7921

**Rocky Mountain Llamas**



Breeding - Training - Boarding - Equipment  
 Bobra B. Goldsmith  
 7202 N. 45th Street, Longmont, CO 80503  
 (303) 530-5575

## COMPLIMENTARY COPIES OF OUR NEWSLETTER

In the center of the Newsletter are three order forms for you to duplicate and give to people who buy llamas from your ranch. We will send them a copy of the

Newsletter and membership information. This is a nice way for you to help our new buyers and it will also give us names for a database of new llama owners.

## FOR SALE

**FEMALES FROM OUR 10 YEAR OLD HERD:** bred ladies with plenty of experience starting at \$6,000, weanlings from \$4,000. All from excellent healthy dams and sires, domestic blood lines, various colors, registered. Might trade for other females. Frye Llamas, 303-726-5346.

**PROTEGE IS FOR SALE!** Too many studs force us to sell this beautiful male. Extreme wool length, conformation and presence. A rare opportunity is in store for the discriminate breeder. Flint Hills Llamas, Leisa and Jerry Bailey, 913-537-4644.

**RED, SEAL-POINT MALE** trained to halter, light pack, obstacle and tether line. 2 year old, gentle disposition suitable for 4-H and PR. Beautiful fleece with guard hair is easy to clean. Doolittle and R.M. Handsome pedigree. \$1,000. Frye Llamas, 303-726-5346.

**OUTSTANDING OPPORTUNITY TO PURCHASE TOP QUALITY FEMALES.** Proven mothers bred to multi-Champion GANDY DANCER and beautiful daughters of Gandy (some bred). 15 to choose from, various styles, sizes & colors. Starting at \$5500. Health, reproductive guarantee. Llamarage, P.O. Box 574, Platteville, CO 80651; 303-785-2463 - party line, keep trying.

**MAGIC MACHO SON.** 2-1/2 years old. Beautiful banana ears with excellent wool from head to toe. He is gray and white with good conformation. Price \$6,000. Photos available Porter Springs Llamas, 801-723-5368 (Utah).

**FOR SALE OR TRADE:** Two 1/2 Bolivian Stud quality males. 18 months and 15 months. Medium brown Labamba-Chico ancestry, and white Lambamba-Sitting Bull Great-Grandson with long silky body and leg wool.

**LLAMA HERD AVAILABLE** by the animal or buy the herd! Big, healthy animals with good confirmation. 12 females (9 adult) \$3,000-\$8,000; 4 full males (3 breeding sired, one weanling) \$1,000-\$4,000. Log Hill Llama Alpacas, Montrose, Colorado, 303-249-2516.

**CHOICES GALORE!** Weanling, yearlings or bred females only \$6500 - \$8500. Will finance. Sired by Cinco de Mayo, Gandy Dancer, GLD Bogata, Sgt. Alfredo. All colors. Guaranteed. Stud service included, (home of MC Hammer). TTEAM trained. Delivery available. Overland Trail Llamas. Livermore, CO, 303-493-2335.

**INDIAN PEAKS RANCH** continues to be at the leading edge of the Colorado llama industry by offering sound, large framed and densely fleeced males, females and bred females from a twelve year old breeding program. Come and "Take a Peak" at what you've been missing. Call Alaine at 303-459-3245. 30 minutes from Boulder.

**TWO GELDINGS, ONE BAY, BEAUTIFUL AND COOPERATIVE.** DOB 4-4-91-\$1000. Other is grayish brown-shy and curious clown. DOB 9-30-89. \$500. Female 7-19-92 white with black rump and other black markings. Pixie face and friendly! All registered. Sunrise Llamas, 7800 Salt Creek #43, Casper, WY 82601 303-265-5909.

**STAGE STOP LLAMAS** is a one stop shopping experience if you are looking for llamas. I have bred and weanling females for sale and a large number of stud quality males for pet prices. I am located 9 miles from Cripple Creek so plan a mini-vacation. Call Sally German, 719-689-3063.

**REGISTERED MALES** ages 8 months to 2 years. Beautiful dark colors with exceptional wool and conformation. For more information or photos contact DeAnn - Porter Springs Llamas, 801-723-5368 (Utah).

**FEMALES FROM OUR ESTABLISHED HERD.** Weanlings starting \$4,000 and bred females from \$6,000, one with male baby of Canadian bloodstock at side. Will include breeding to our Clark Kent son. These are not culls but quality breeders. Frye Llamas, 303-726-5346.

**STRIKING BLACK & WHITE GELDED 3 YEAR OLD MALE** available \$1,000. Trail experienced and trained to trailer and tether. Here's your packer! Frye Llamas, 303-726-5346.

## CLASSIFIED ADS

### **INTERESTED IN BUYING, SELLING, TRAINING, OR JUST PLAIN ENJOYING LLAMAS?**

Our books and videotapes have been helping people to do all this and more since 1984. Juniper Ridge Press, Box 338-R, Ashland, Oregon 97520. Call us at 800-869-7342 for a FREE catalog.

**RANCH & STALL BANNERS**, Custom made. My design or yours. Various fabrics and textures. Flat or quilted (heavy or light) \$5-\$20 per sq.ft. plus material. No job is too big or too small. Plan now for this fall and next spring's shows. Limited number made per season. Call or write Nancy, Valley View Ranch, 13333 County Road #1, Ridgway, Colorado 81432, 303-626-5700.

**HAVE YOU READ STANLYNN DAUGHERTY'S PACKING WITH LLAMAS?** It's crammed with information on all aspects of packing: how to select a pack llama, training, care and feeding, training, hitting the trail, in camp, backcountry recipes, and more. \$13.95 postpaid from Juniper Ridge Press, Box 338-R, Ashland, OR 97520 or 800-869-7342.

### **GOT A LLAMA THAT'S HARD TO HALTER?**

Can't pick up its feet? Hates to be groomed? Won't load easily? or you're behind in training your weanlings? Training for your llamas and you with TTEAM techniques at your place or ours. Contact Dale Pettigrew, Overland Trail Llamas, Livermore, CO 303-493-2335.

**HOLIDAY SPECIAL!** LAMAHERD(tm) SOFTWARE 25% OFF thru December. ACCOUNTING Module now available! For llamas, alpacas, miniature donkeys. Detailed animal, breeding, health, show, owner information. Pedigree, progeny charts. Many reports: inventories, calendars, histories, more. \$200-\$410 minus 25% thru December. SWCS, 65711 TwinBridges, Bend, OR 97701. 503-389-1913.

**LLAMA HANDLING AND TRAINING:** The TTeam approach by Marty McGee. Detailed explanations and illustrations of methods for working with your llamas without force. \$26.75 ppd. Gentle grooming brush, \$12. ppd. Video: "Basic TTEAM with Llamas" by Marty McGee, \$67.50 ppd. Halters. Pettigrew, 168 Emerald Mtn. Court, Livermore, CO 80536, 303-493-2335.

## HERDSIRE ADS

**INDIAN PEAKS RANCH** offers Championship long wool, medium wool, and performance Stud Services to Camacho Chief, Yukon or Windfall. Tiered pricing, discounts and guarantees (starting at \$1,000). Brochures, portfolios, videos on request. Also on all-aluminum Llama Trailers and accurate External Ultra-sound units. Call Alaine or Tim at 303-459-3245.

**STUD SERVICE:** Ten studs representing most of the best domestic bloodlines. Prices range from \$500 to \$1500. If you buy a female from me you may rebreed her to any of my studs for as long as you own her or as long as I am in the business. Sally German, Stage Stop Llamas, 719-689-3063.

**BREEDINGS AVAILABLE TO BERETTA** (Essexson). Wonderful wool. Great disposition with excellent bone. He is dark red with black markings \$1,000. Contact Porter Springs Llamas, 801-723-5368.

**AT LAST! AFFORDABLE BREEDING FEES!** We offer two black 1/2 Chilians to choose from. Abundant body and leg wool. Heavy bone and perfectly hooked ears. One is a Macho Camacho Son. \$250. and \$500. Also, need to prove medium brown 1/2 Bolivian-Chico Cross 18 months, \$150. Call Nancy, Valley View Ranch, 303-626-5700.

**BLUE MAGIC OF TUNITAS** - Located in the heart of the Midwest. Long, black, silky wool, large bone, correct conformation. Unbeatable bloodlines. Magic Macho [Macho Camacho] X Blue Bell PL [Eclipse]. Fee \$1000 for remaining 1992 year. Flint Hills Llamas, Leisa and Jerry Bailey, 913-537-4644.

**BREEDING FOR QUALITY** makes \$ense! Multi-Champion GANDY DANCER (Oak Hill Kit Carson x Huari), sire of Champions (9 Champions, 5 Res. Champions in 1-1/2 years). Invest in one of your own! Limited time only -- \$1000, live birth. Llamarage, P.O.Box 574, Platteville, CO 80651; 303-785-2463.

**STUD FOR SALE:** Experienced and proven stud. Gentle disposition (a real ladies man). He has thrown good bone and confirmation, and good silky wool. You can buy the gentleman at a reduced \$9,000. Call Bob Riley at 800-255-0357. Boulder Ridge Ranch, Lyons, CO.





## Rocky Mountain Llamas

Cold Weather Coming and Babies are Due?

*No-nonsense Baby Warm Coats & Raincoats*

*Thoroughly tested in cold, wet weather*

**Warm Coats good for cold, snowy weather**

Lightweight, rip-stop nylon  
lofty polyester fiberfill  
Easy velcro fastenings  
#746 \$45. + shipping

**Raincoats for rainy weather**

Ultrex breathable cover  
Nylon lined  
#748 \$50. + shipping

**Raincoats for cold weather**

Same at #748 but with  
medium interlining  
for warmth  
#749 \$50 + shipping

**Two Sizes:**

SM 20-30 lb. babies  
LG 30+ babies



Bobra B. Goldsmith ~ 7202 North 45th Street ~ Longmont, Colorado 80503 ~ 303-530-5575

**DEADLINES FOR NEWSLETTER:  
DECEMBER 11, FEBRUARY 12 AND APRIL 9**

### Rocky Mountain Llama and Alpaca Association

593 19-3/4 Road

Grand Junction, Colorado 81503



Address Correction Requested

**1993 Membership Renewal and  
Service Directory Forms Enclosed  
Deadline: December 31, 1992**

Bob & Barbara Hance  
HANCE RANCH  
11818 W. 52nd Ave  
Wheat Ridge, CO 80033-2032

Dated Material  
Do Not Delay In Delivery, Please!